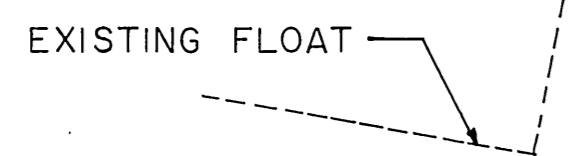
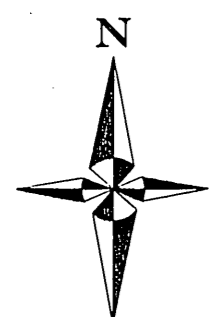


LAYOUT CONTROL



EXISTING FLOAT

WW-3  
#

ESTIMATE OF QUANTITIES			
ITEM NO.	ITEM	UNIT	QUANTITY
110	Mobilization & Demobilization	L.S.	ALL REQ'D.
121 (1)	DBE Incentive	C.S.	ALL REQ'D.
306	Construct Timber Approach	L.S.	ALL REQ'D.
312	Gangway Relocation	L.S.	ALL REQ'D.
ADDITIVE ALTERNATE NO. 1			
311 (1)	Construct 10' x 25' Timber Float Addition	L.S.	ALL REQ'D.
ADDITIVE ALTERNATE NO. 2			
311 (2)	Pile Collar Replacement	L.S.	ALL REQ'D.

**GENERAL NOTES**

MEAN LOWER LOW WATER (MLLW) = 0.00'  
 WW-1 AND WW-3 ARE PK NAILS IN BEDROCK.  
 APPROACH PILES: APPROACH PILES SHALL BE 32" MINIMUM TIP CIRCUMFERENCE, TREATED TIMBER PILES. BEARING VALUE: 10 TONS. ESTIMATED PENETRATION: 15'.

**HORIZONTAL CONTROL**

THE BASIS OF HORIZONTAL CONTROL FOR THIS PROJECT IS THE RECORD INVERSED BEARING OF S.11°35'07"W. BETWEEN THE U.S. & G.S. MONUMENT "INGOT" & W.C.M.C.-1, LOT 4 U.S.S. 3558 AS DETERMINED FROM THE OFFICIAL PLAT OF U.S.S. 3558. THE LOCAL BASIS OF BEARING FOR THIS PROJECT IS THE BEARING OF S.48°00'E. ALONG THE CENTERLINE OF THE EXISTING 10' x 75' FLOAT.

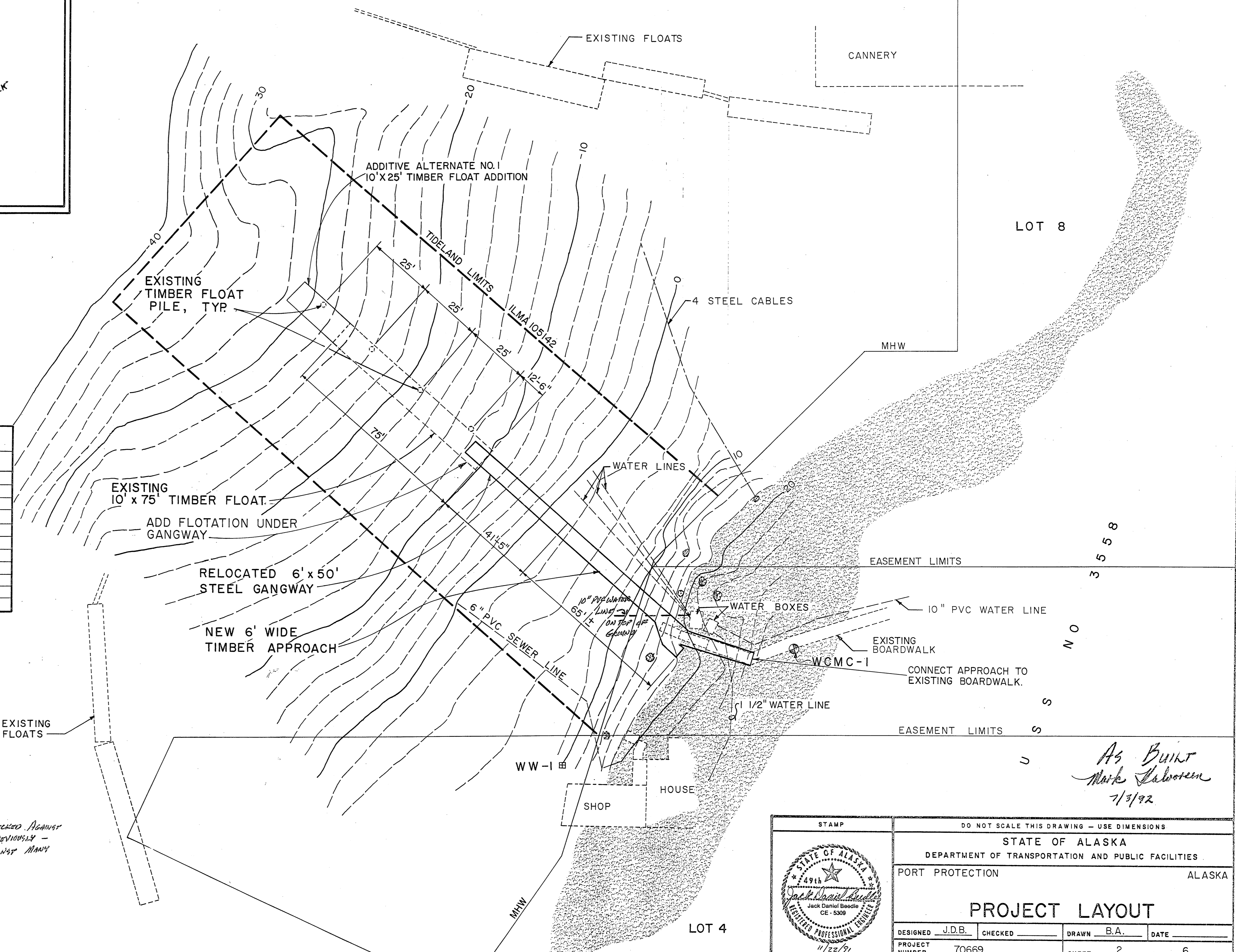
**VERTICAL CONTROL**

THE BASIS OF VERTICAL CONTROL FOR THIS PROJECT IS THE CONTROL POINT WW-1 WITH AN ACCEPTED ELEVATION OF 9.75' ABOVE M.L.L.W.

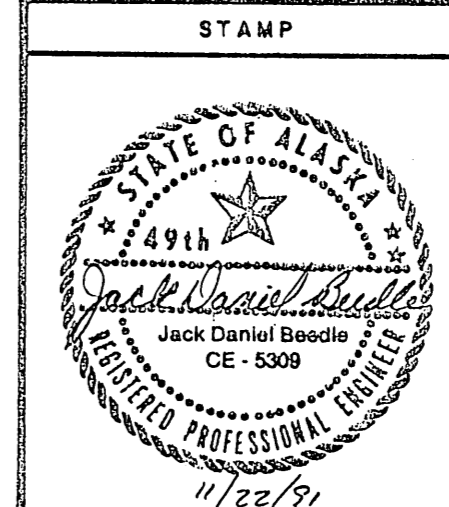
**TIDAL DATA**

MHHW	12.4
MHW	11.5
MTL	6.4
MLLW	0.0
ELW	-4.0

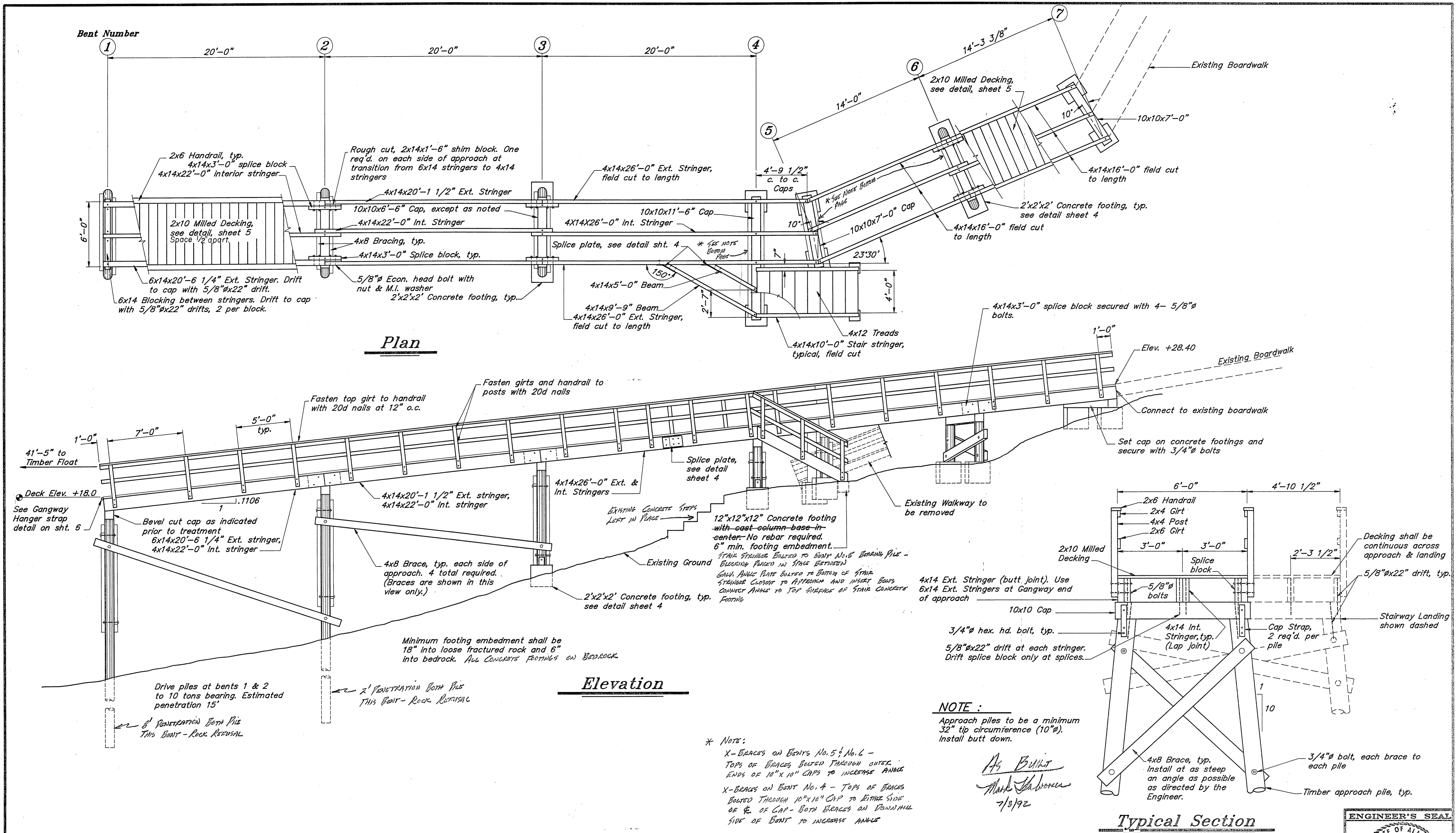
*ORIGINAL PLANNED ELEVATION OF 9.75' CHECKED AGAINST ELEVATION OF BOAT GRID CONSTRUCTED PREVIOUSLY - GRID ELEVATION CONTROL CHECKED AGAINST MANY MORE TIDES THAN PLANNED ONE*



*As Built  
Mark Salvoen  
7/3/92*



DO NOT SCALE THIS DRAWING - USE DIMENSIONS			
STATE OF ALASKA			
DEPARTMENT OF TRANSPORTATION AND PUBLIC FACILITIES			
PORT PROTECTION		ALASKA	
<b>PROJECT LAYOUT</b>			
DESIGNED	J.D.B.	CHECKED	
PROJECT NUMBER	70669	DRAWN	B.A.
		DATE	
		SHEET	2 OF 6



BY:	DATE:	DESCRIPTION OF CHANGE:

**RECORD OF REVISIONS**

STATE OF ALASKA  
 DEPARTMENT OF TRANSPORTATION  
 AND PUBLIC FACILITIES  
 SOUTHEAST REGION DESIGN & CONSTRUCTION

Port Protection

Alaska

DESIGNED BY: J.D. Beedle

DRAWN BY: AutoCAD / BWB

CHECKED BY: J.D. Beedle

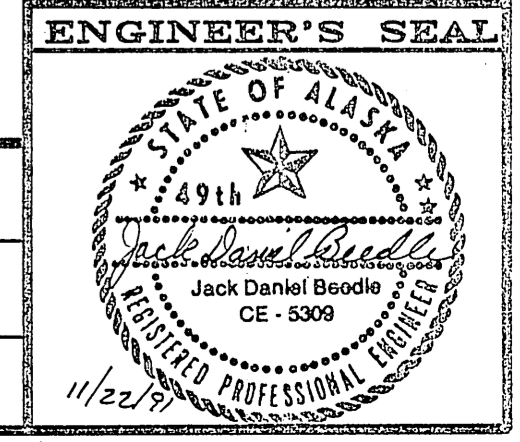
PROJECT No. 70669

DATE:

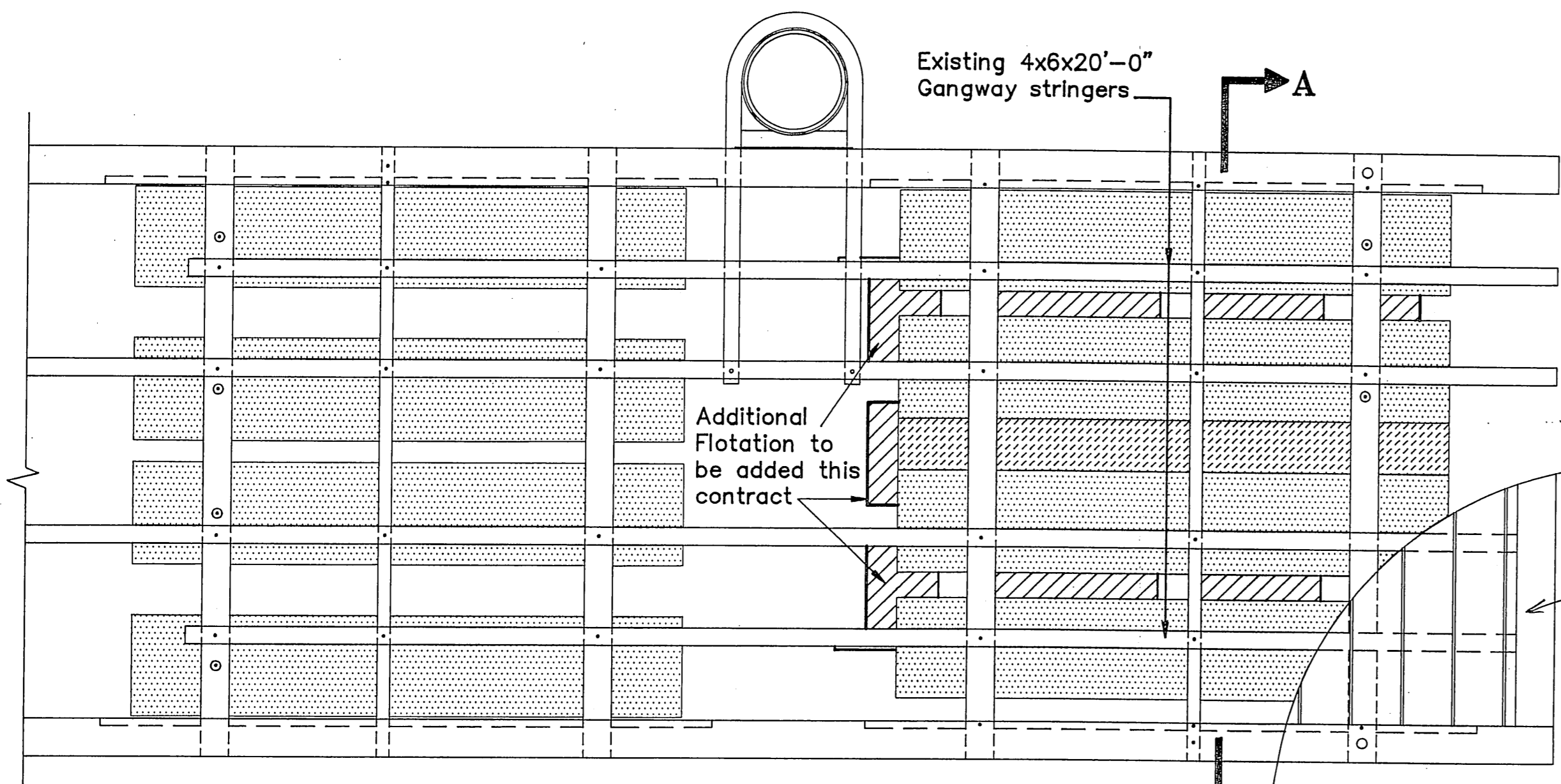
SHEET 3 OF 6

11/22/91

1-48

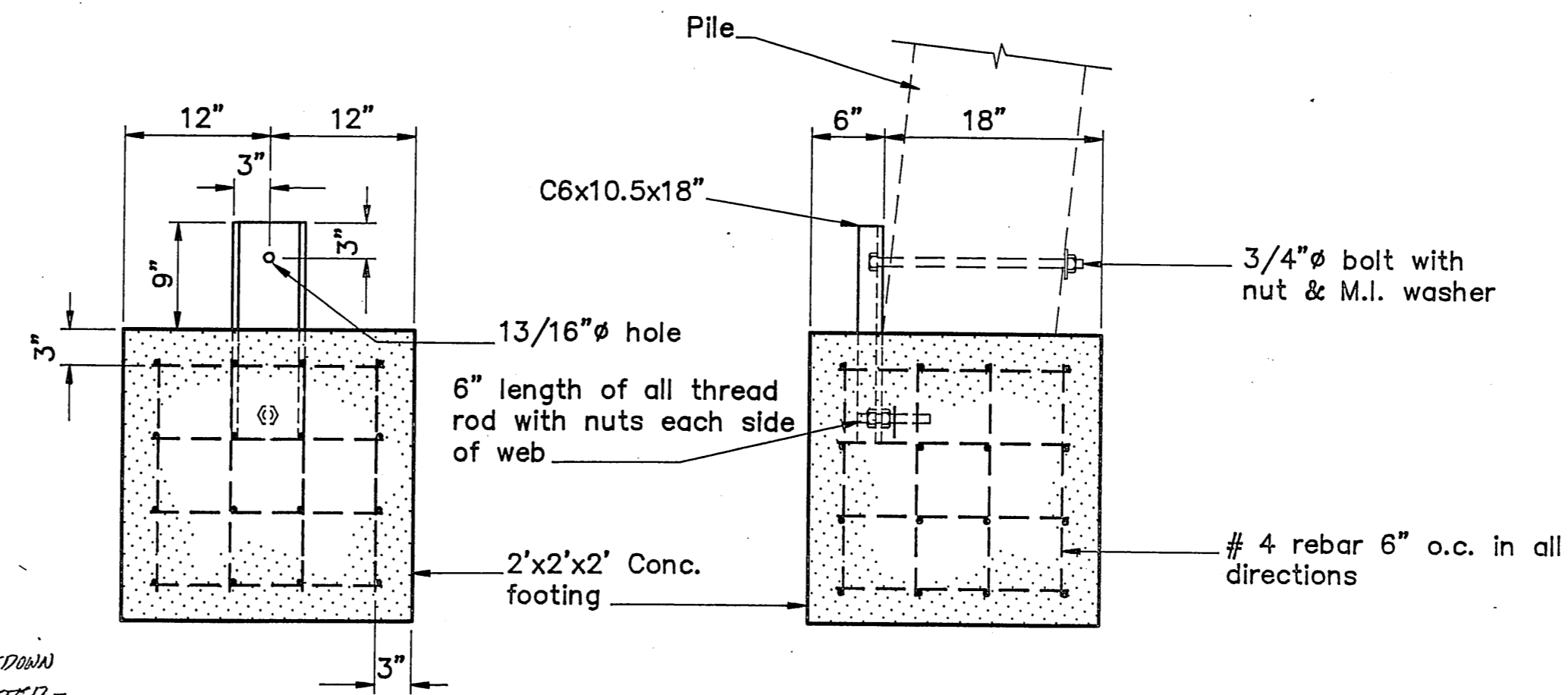


**Approach Details**



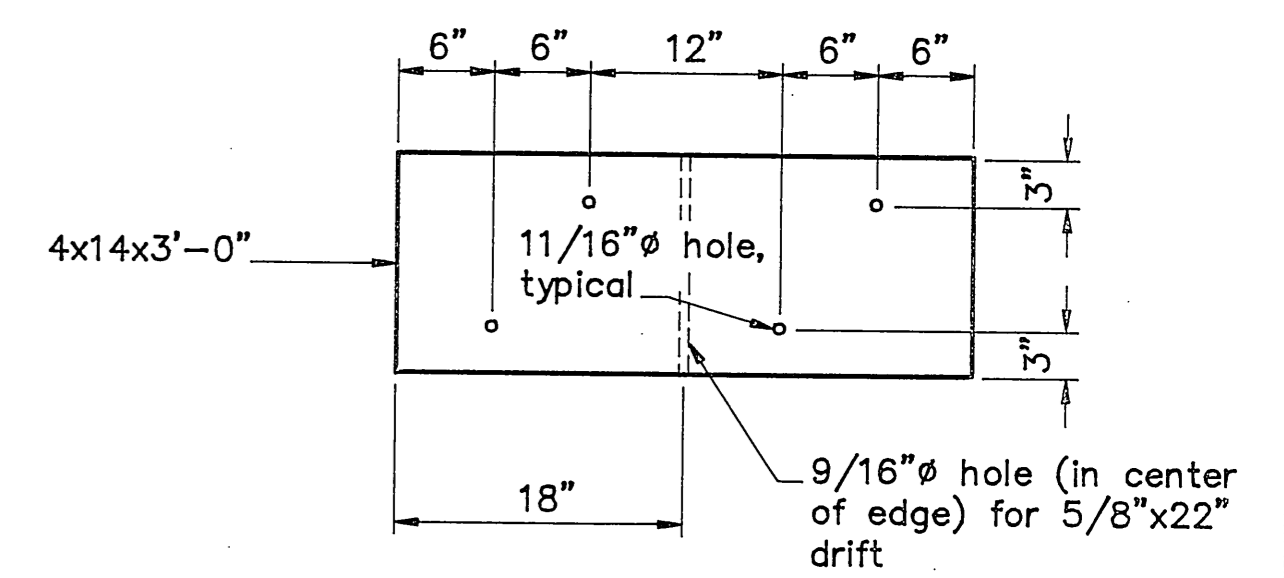
**Plan**

8"x8" TIE DOWN  
PILE DETAIL -  
GANGWAY WOULD SIT  
ON IT DURING HIGH  
TIDES



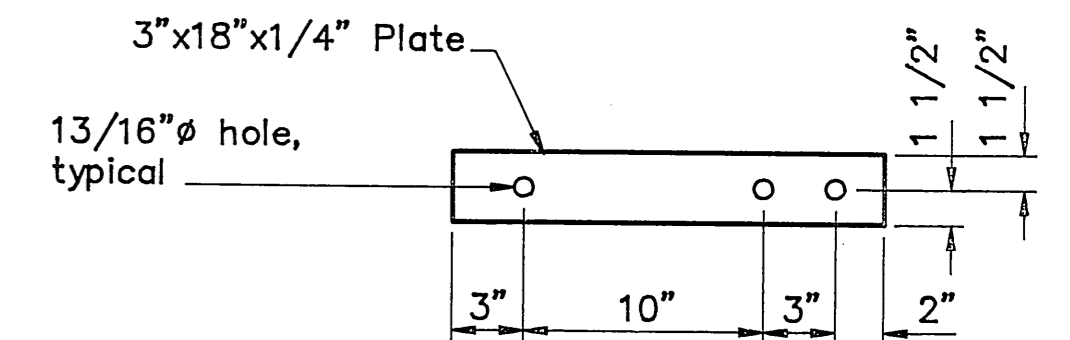
**Concrete Footing Details**

(Cast-in-place)



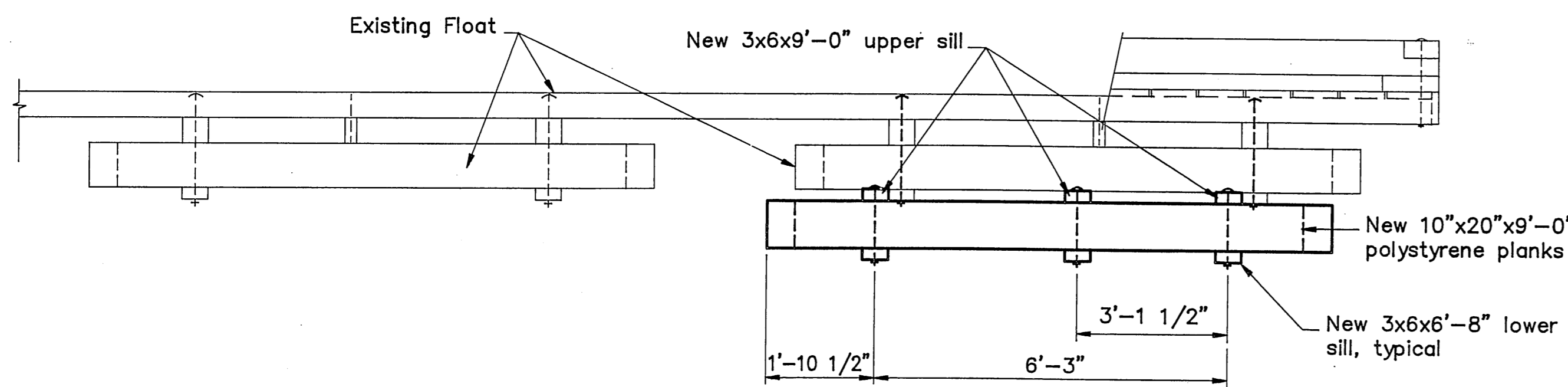
**Splice Block**

6 required

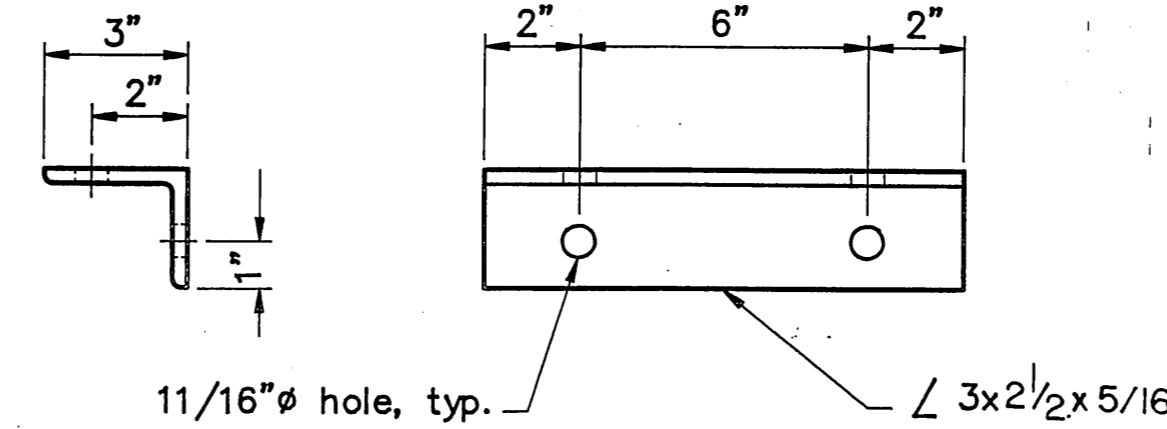


**Cap Strap**

24 required

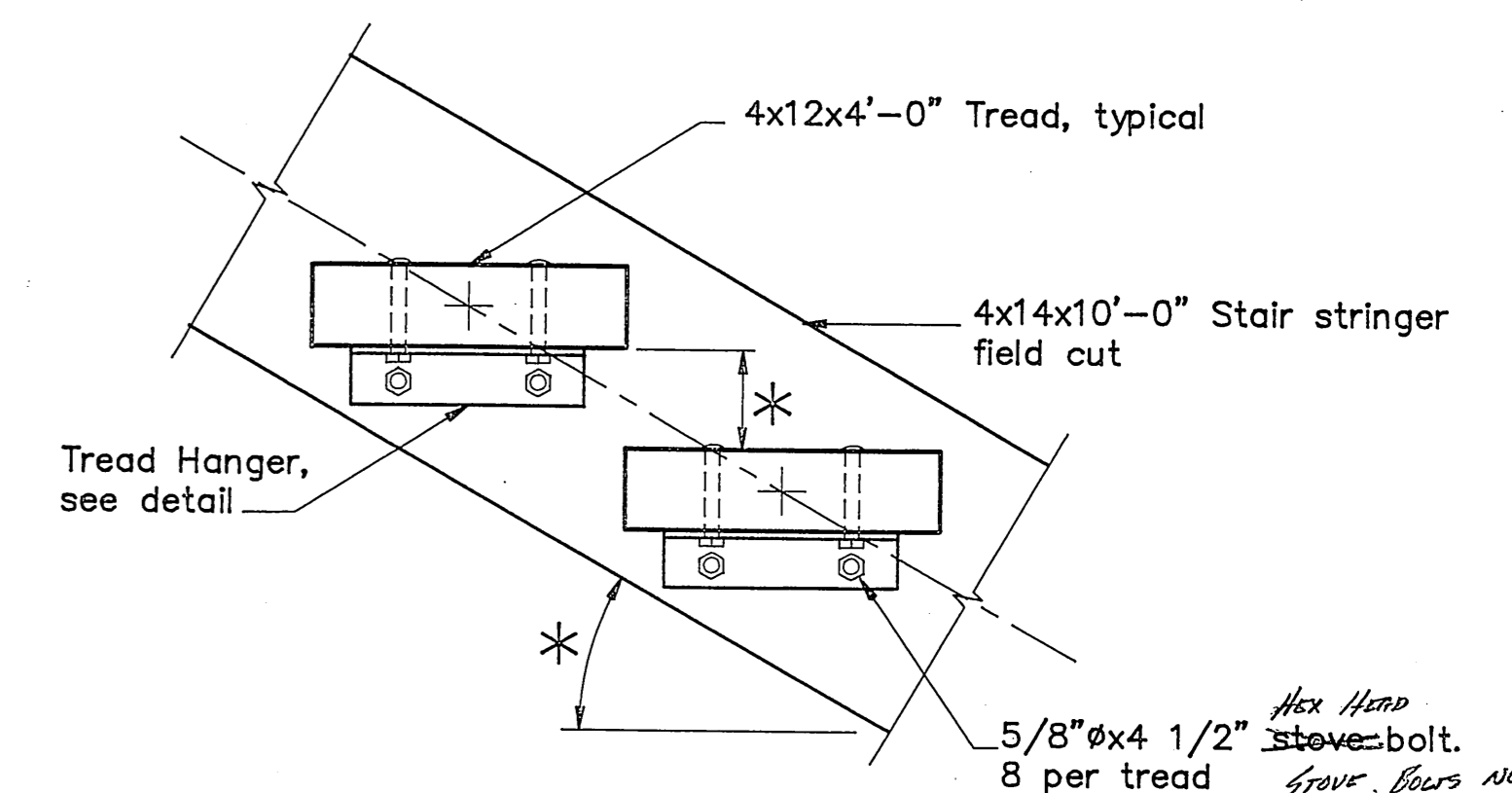


**Elevation**



**Tread Hanger**

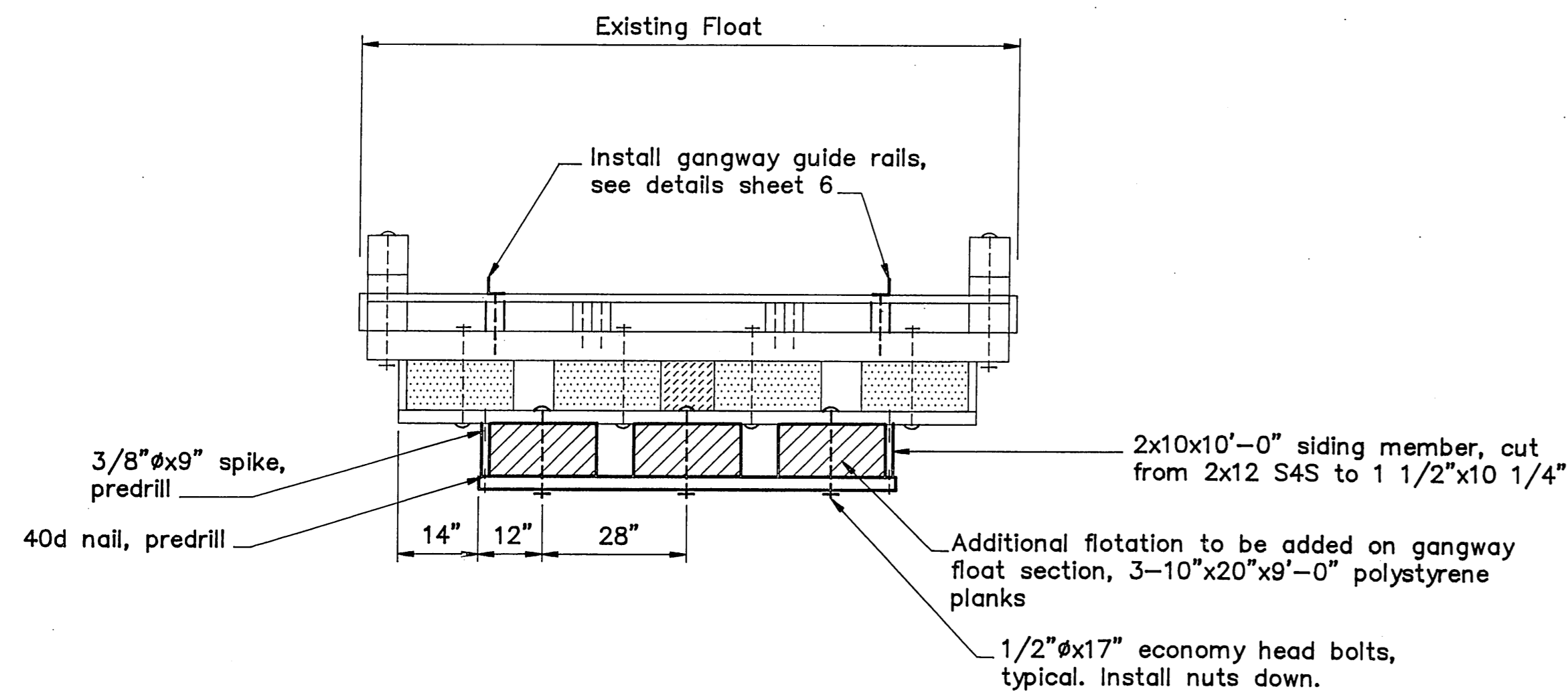
16 required



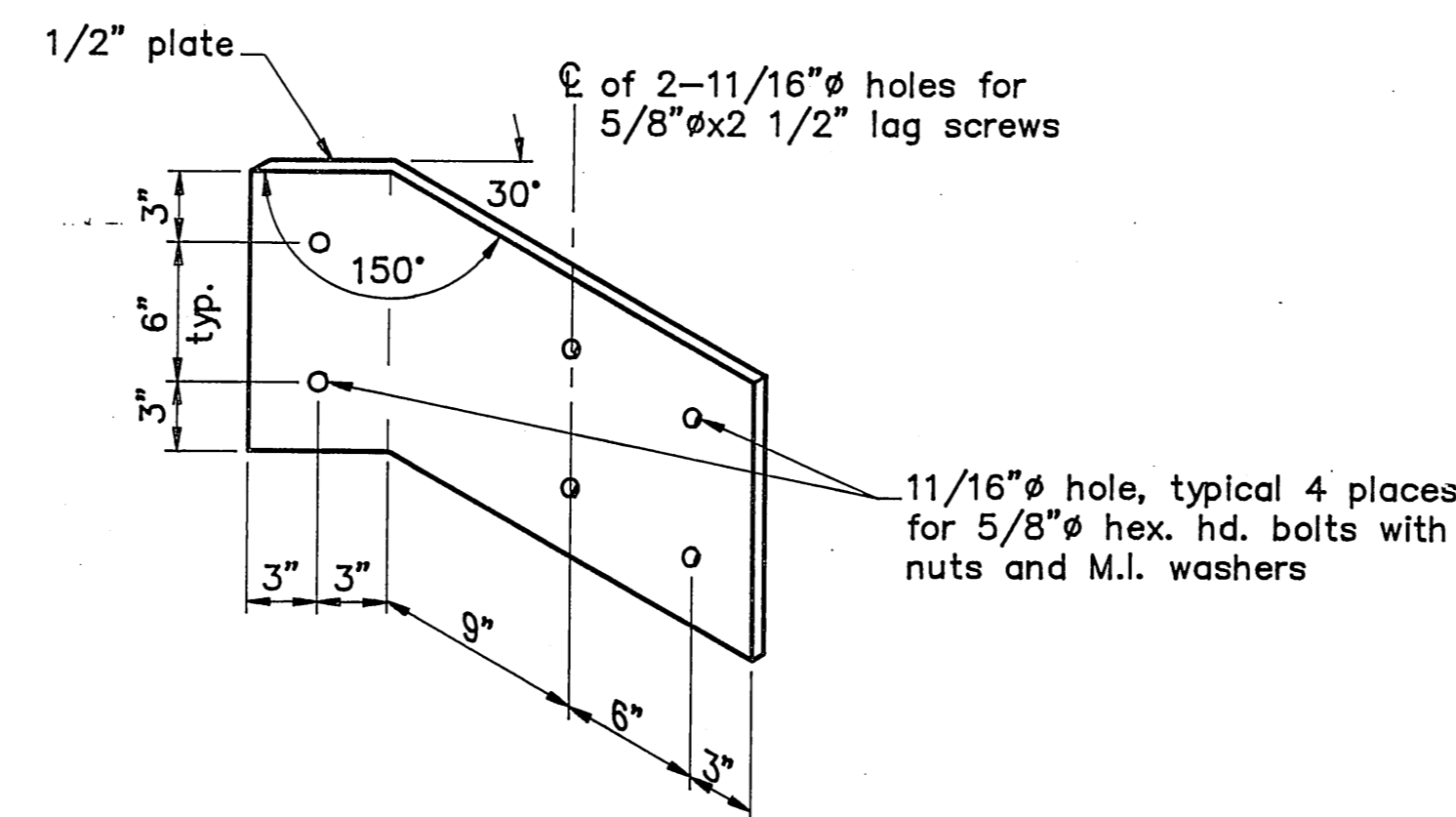
**Stair Tread Detail**

\* To be determined in the field and meet OSHA standards.

Hex Head  
Stove-bolt.  
8 per tread  
NOTE: DOES NOT  
AVAILABLE ON SITE  
SUBSTITUTED BY  
SUPPLIER - WASHERS  
INSTALLED UNDER HANDS;  
MALLEABLE ON STAIR  
STRINGERS, FLAT ON SPIRES



**Section A**



**Splice Plate**

2 required

As Built  
Mark Johnson  
7/3/92

BY:	DATE:	DESCRIPTION OF CHANGE:

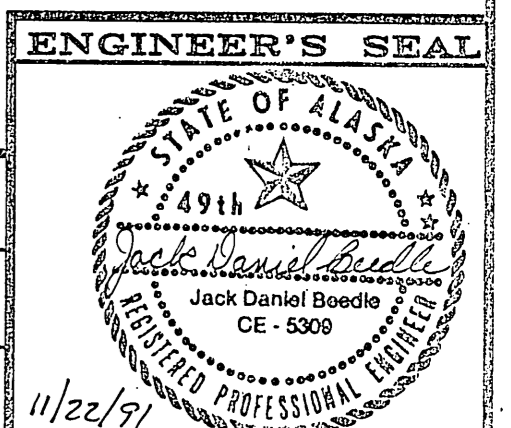
STATE OF ALASKA  
DEPARTMENT OF TRANSPORTATION  
AND PUBLIC FACILITIES  
SOUTHEAST REGION DESIGN & CONSTRUCTION

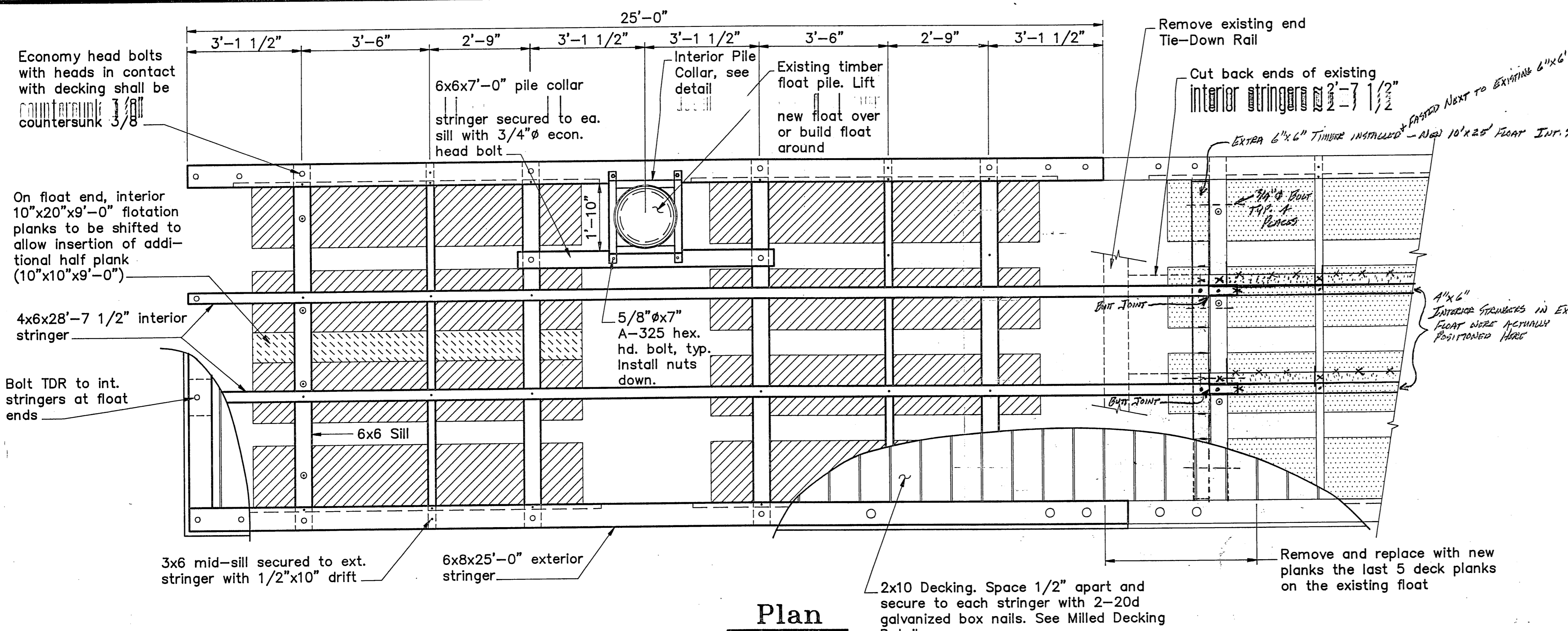
Port Protection

**Approach Details and Float Modifications**

Alaska  
DESIGNED BY: J.D. Beedle  
DRAWN BY: AutoCAD / BWB  
CHECKED BY: J.D. Beedle

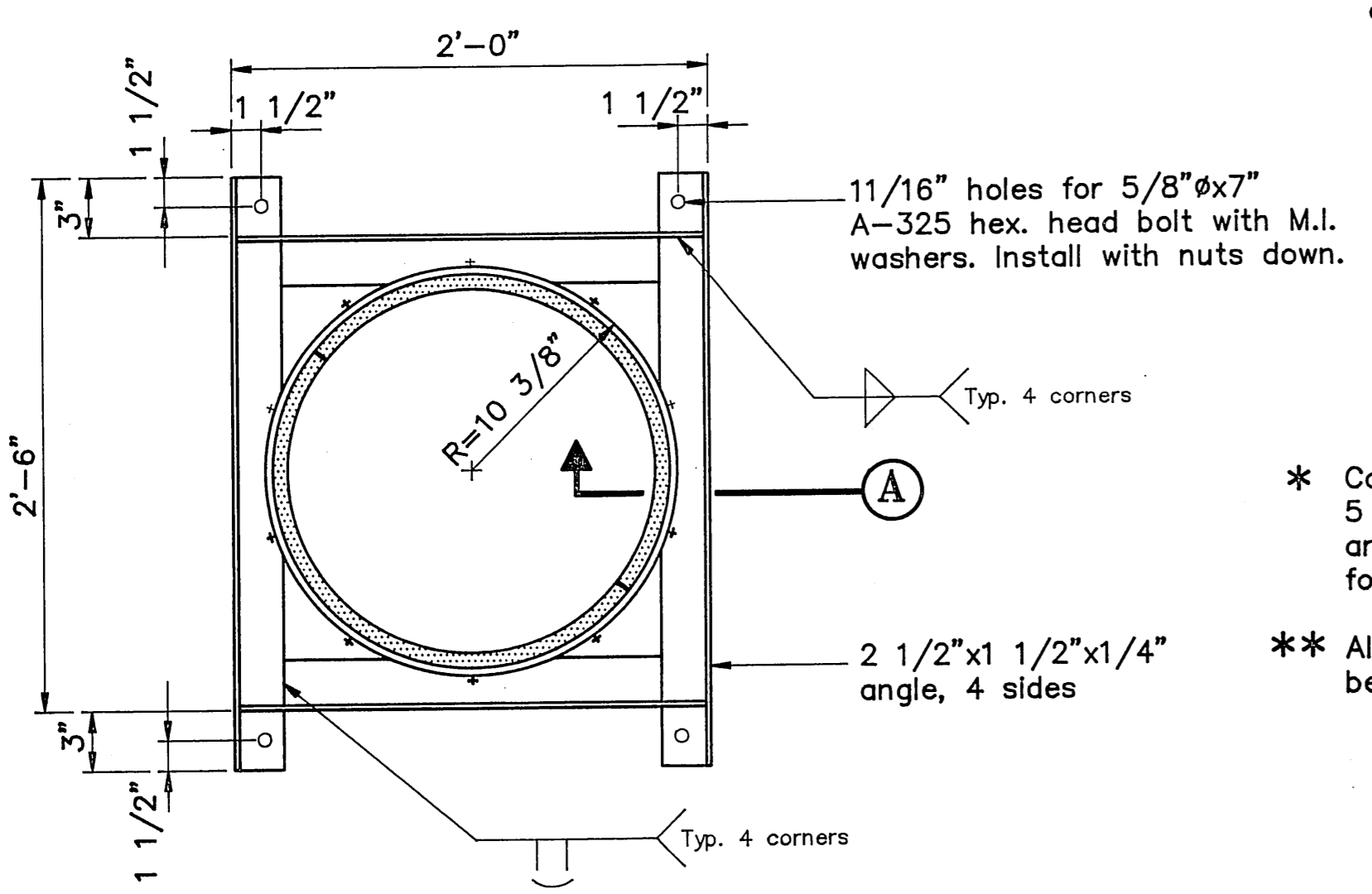
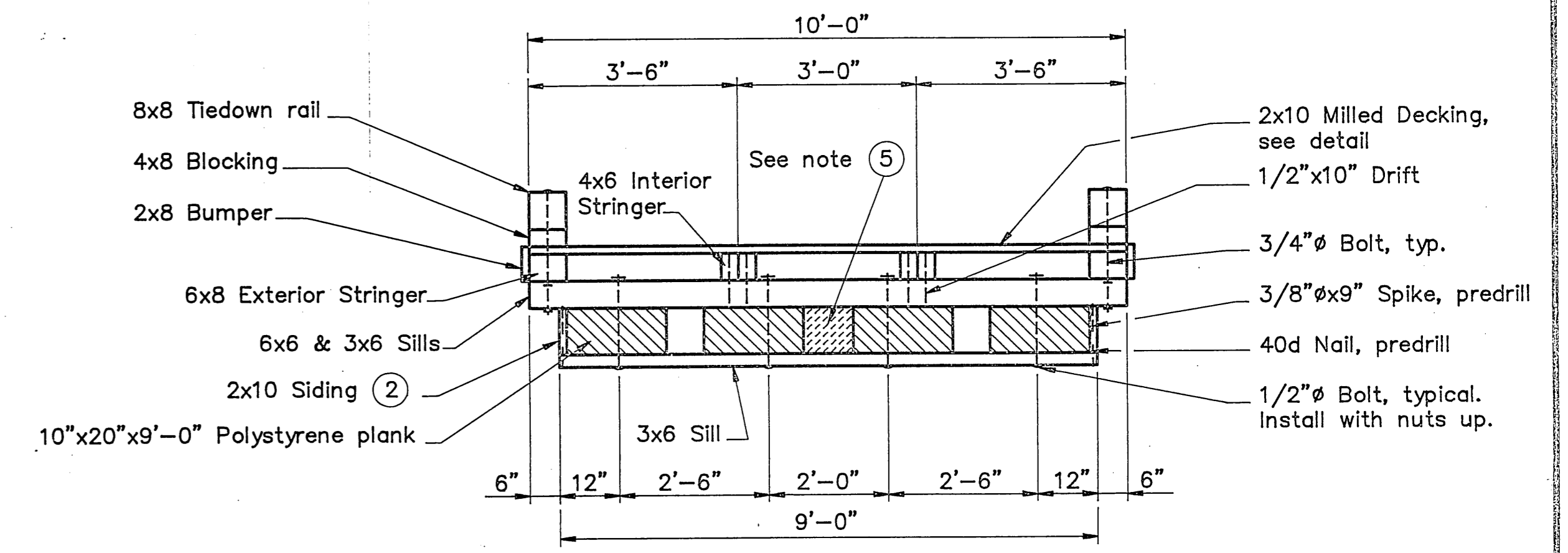
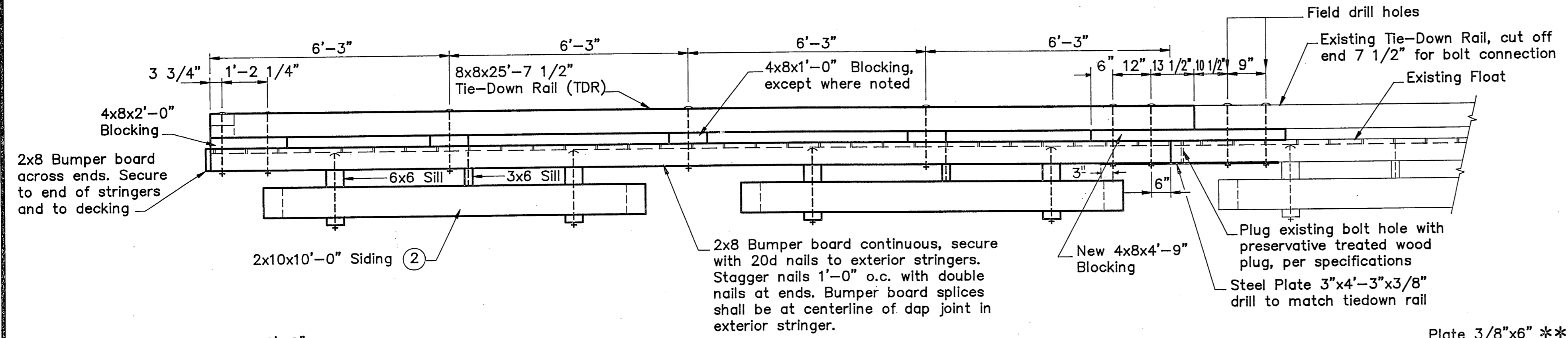
PROJECT No. 70669  
DATE: 9/17/91  
SHEET 4 OF 6



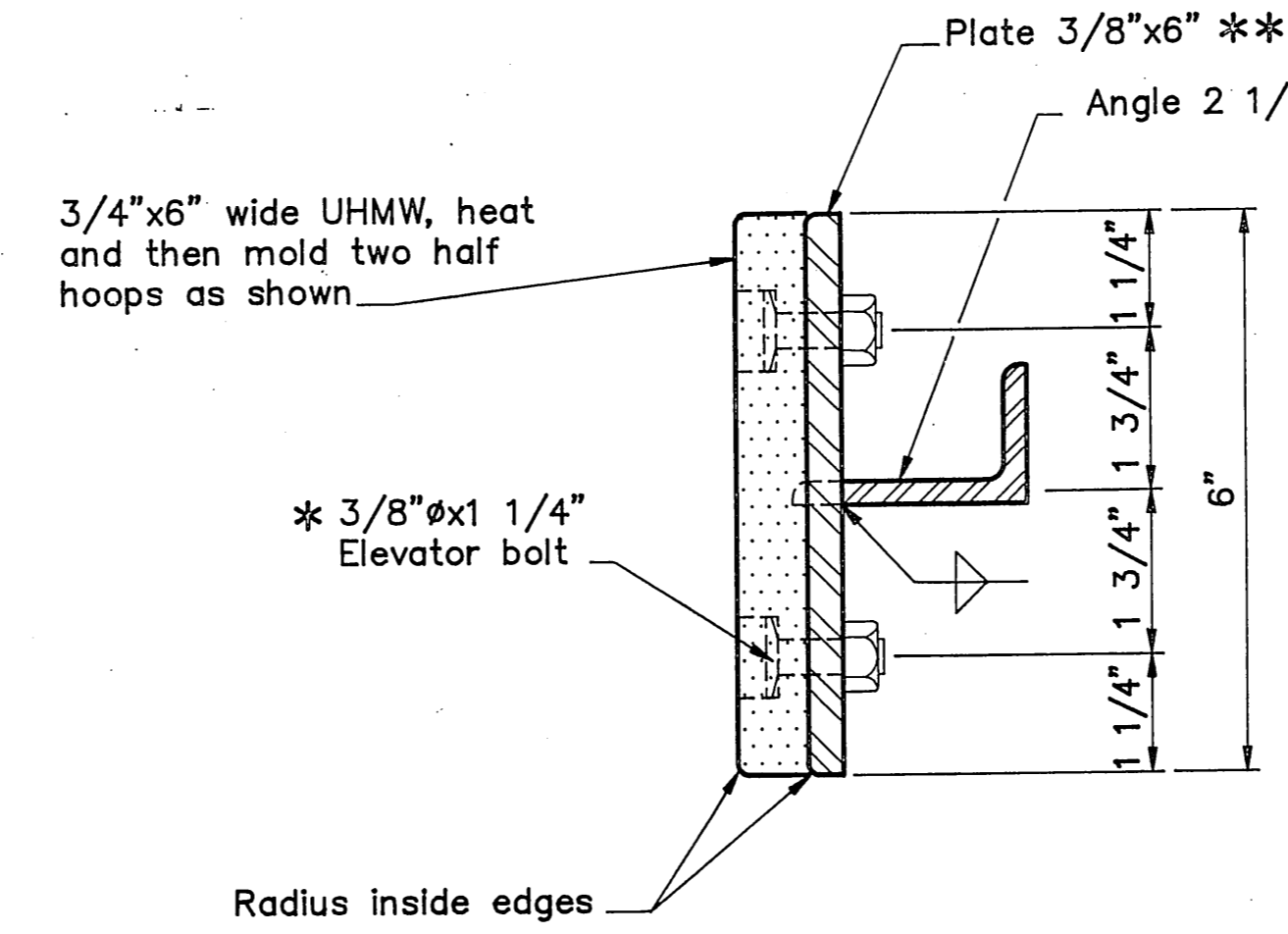


**Notes :**

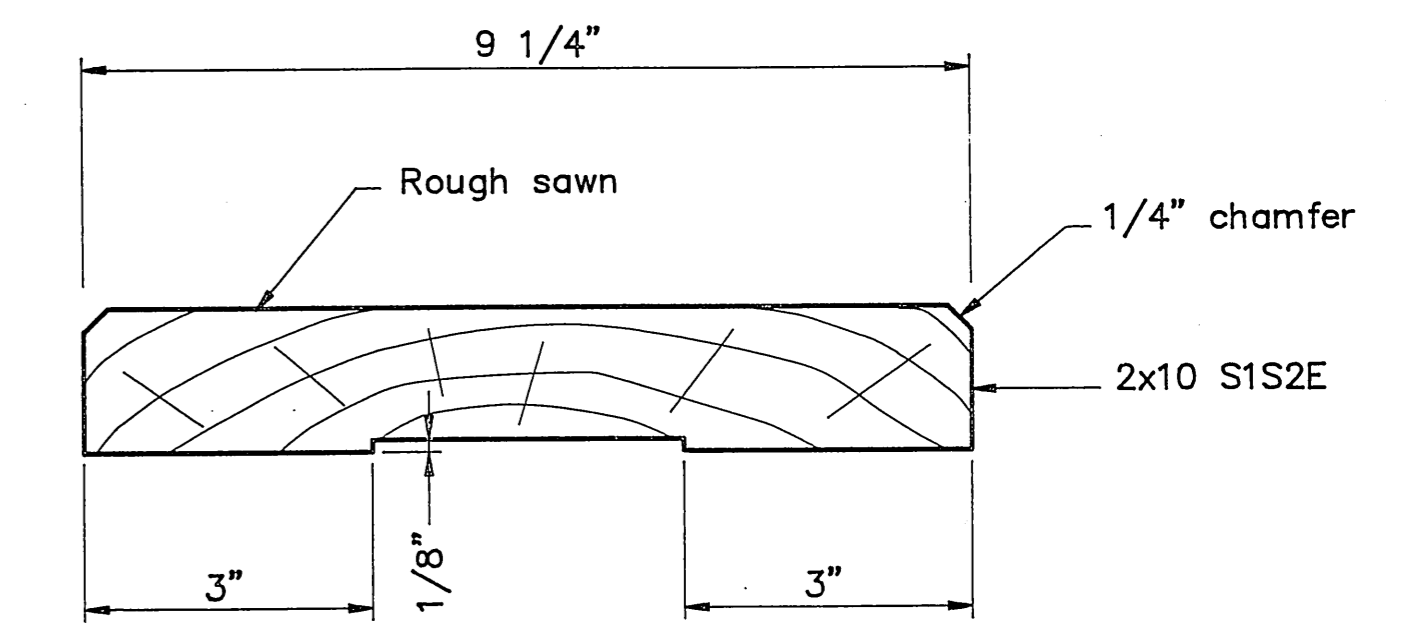
- ① Countersink all bolt heads facing decking 3/8".
- ② 2x10 Siding is a 2x12 (S4S) cut to 1 1/2"x10 1/4".
- ③ All timber to be S4S except decking (milled S1S2E) and 2x10 siding.
- ④ All bolts are 3/4" economy head type with lugs unless noted otherwise.
- ⑤ On float end interior 10"x20"x9'-0" flotation planks to be shifted to allow insertion of additional half planks 10"x10"x9'-0".



- \* Countersink elevator bolts 3/8", space 5 bolts per half collar alternately high and low. Space bolts evenly to allow for rotating the UHMW liner.
- \*\* All welds on inside of steel ring shall be ground smooth.



*As BUILT*  
Mark Salvo  
7/3/92



Milled side shall be towards the inside of tree.

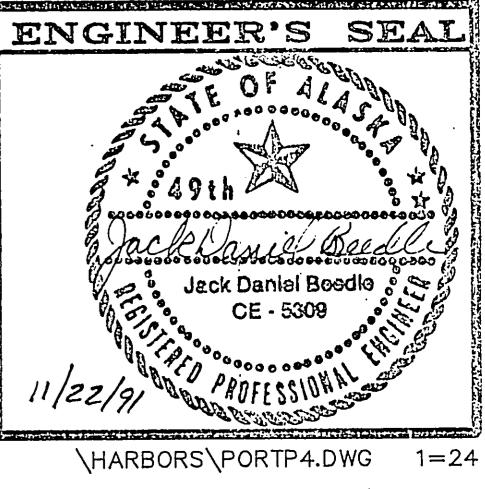
BY:	DATE:	DESCRIPTION OF CHANGE:

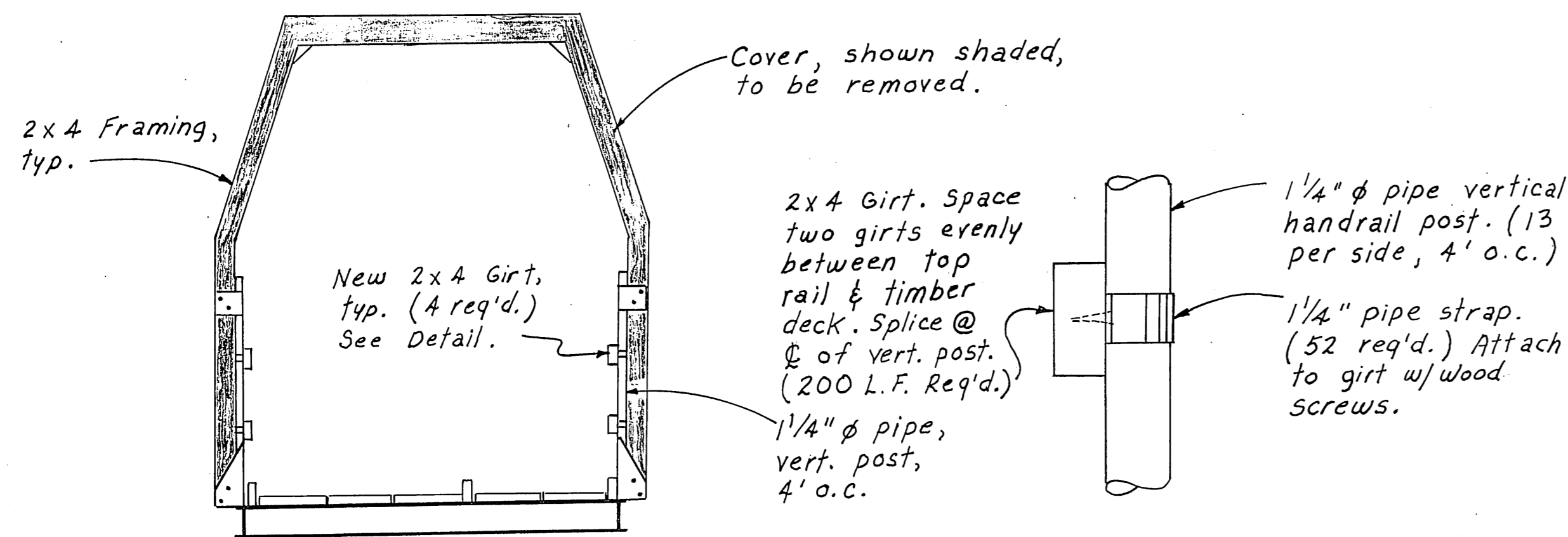
**RECORD OF REVISIONS**

STATE OF ALASKA  
DEPARTMENT OF TRANSPORTATION  
AND PUBLIC FACILITIES  
SOUTHEAST REGION DESIGN & CONSTRUCTION

Port Protection  
Alaska  
**10' Wide Timber Float & Details**

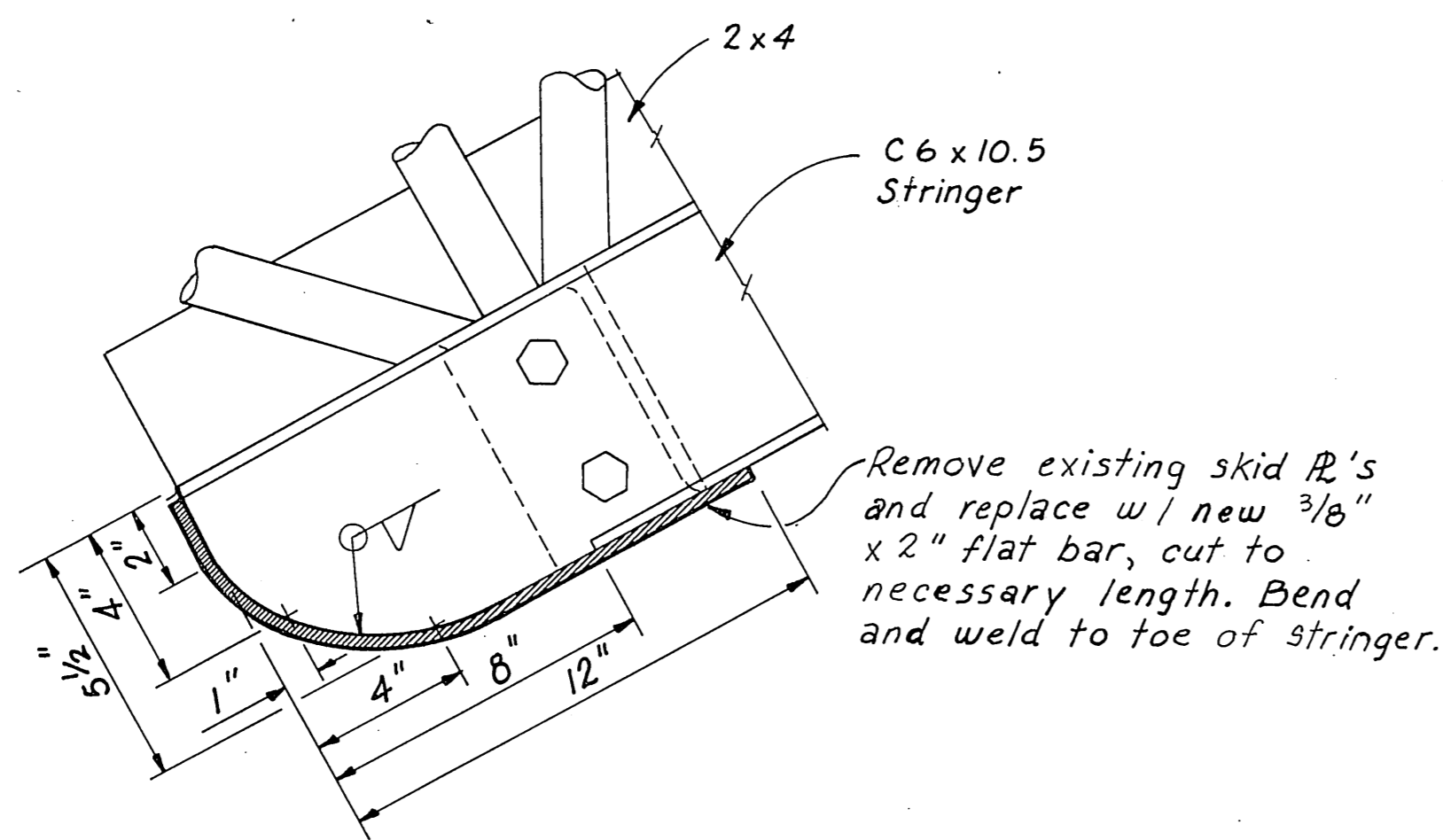
DESIGNED BY: J.D. Beedle	PROJECT No. 70669
DRAWN BY: AutoCAD / BWB	DATE:
CHECKED BY: J.D. Beedle	SHEET 5 OF 6



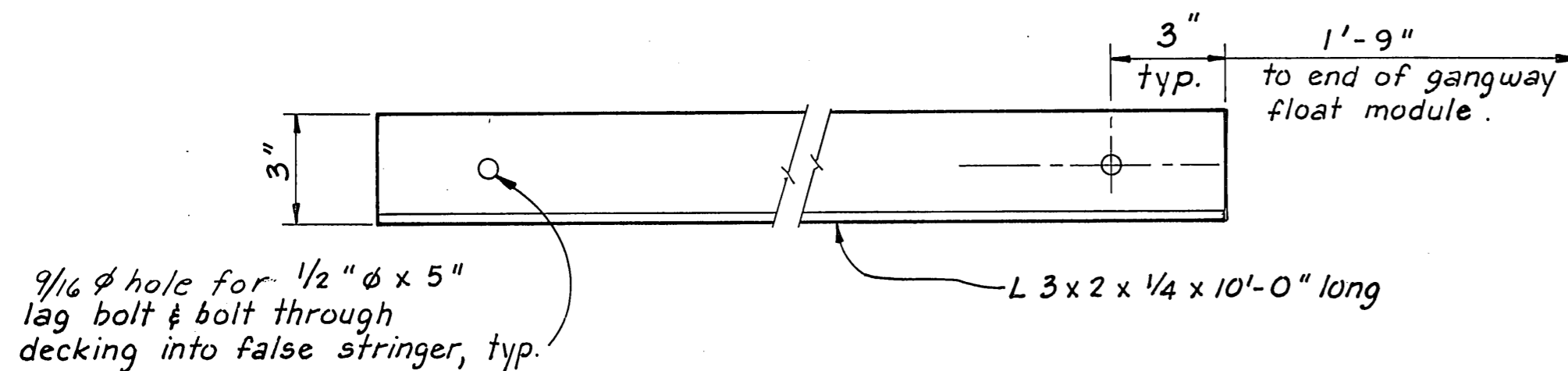


**GIRT DETAIL**

**GANGWAY TYP. SECTION**



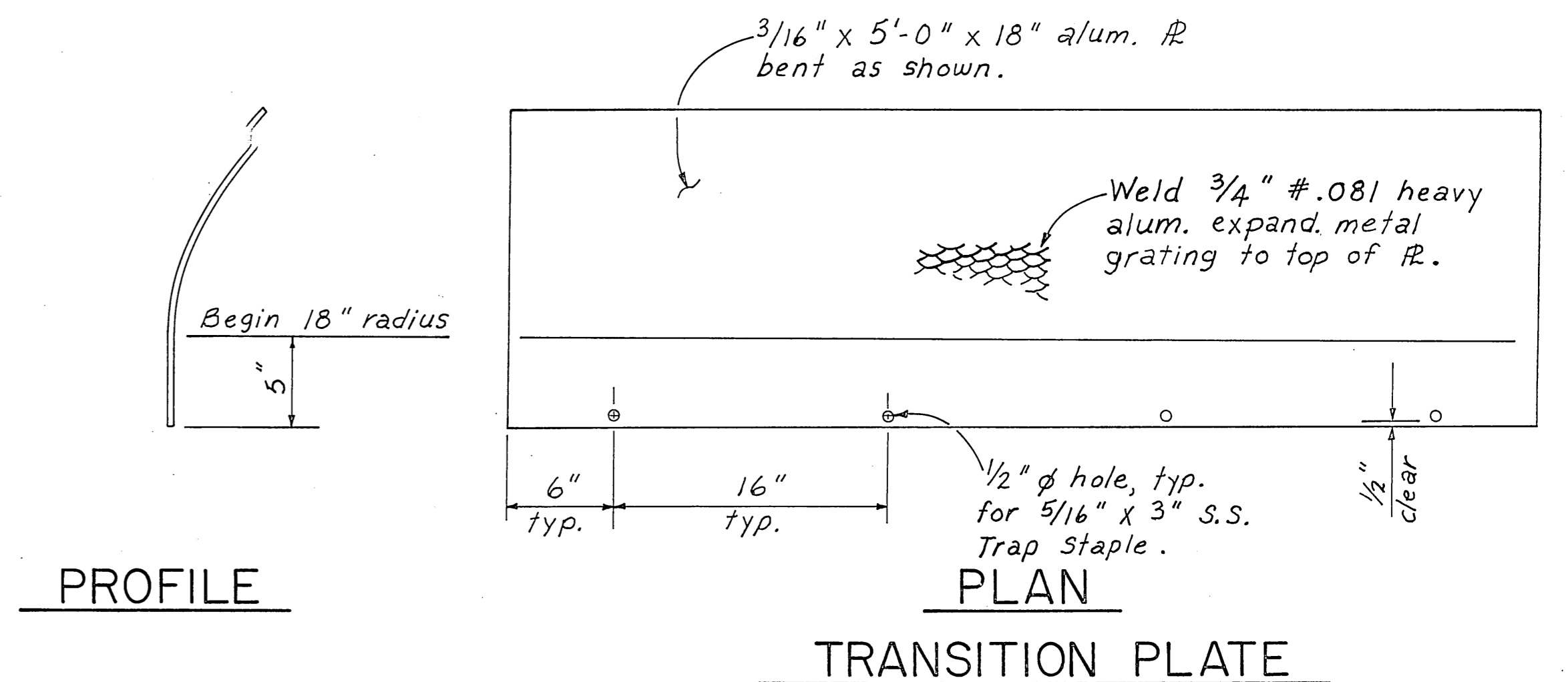
**GANGWAY SKID PLATE**  
2 Req'd.



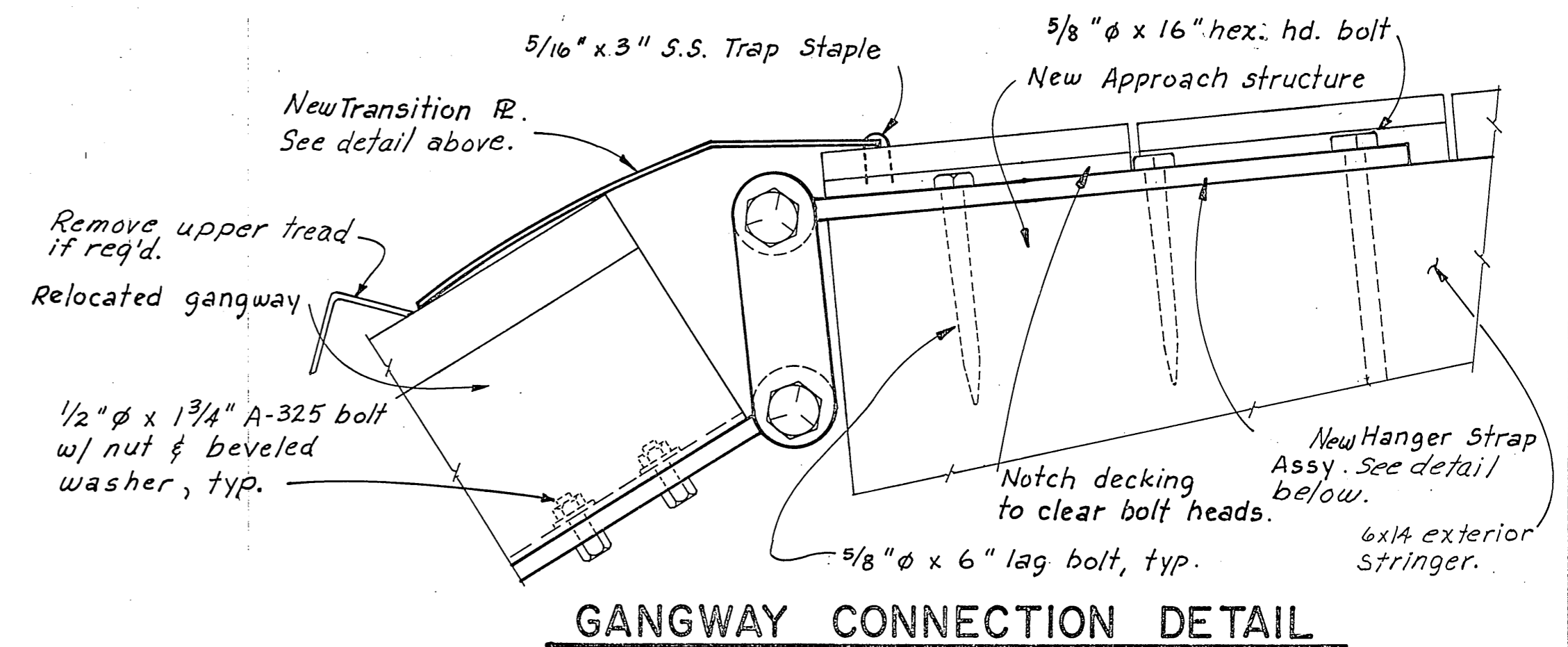
**GUIDE RAIL DETAIL**  
2 Req'd.

**ITEMS OF WORK TO MODIFY GANGWAY**

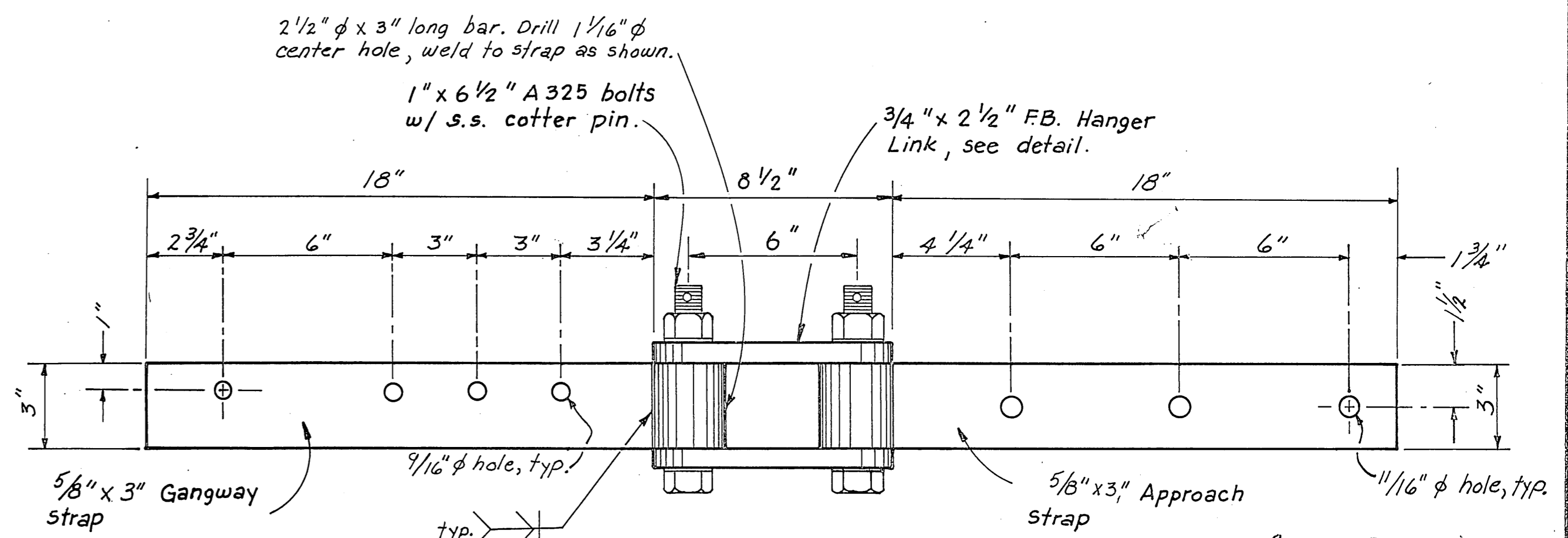
1. Remove existing cover from gangway.
2. Remove existing skid R's and replace w/ new.
3. Fabricate two new guide rails & provide bolts, etc. req'd. for its mounting.
4. Fabricate new transition R & provide staples req'd. for its mounting.
5. Fabricate two new hanger assy's. and provide all assoc. nuts, bolts, cotter pins, etc.
6. Remove expanded metal grating from gangway timber decking.
7. Install 200 L.F. of 2x4 girt w/ pipe straps.



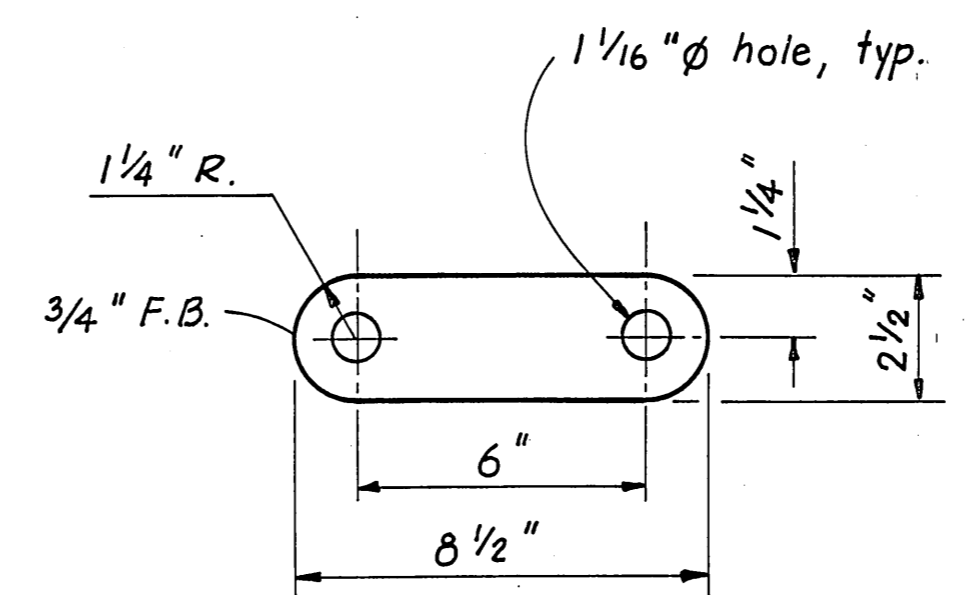
**PROFILE**  
**PLAN**  
**TRANSITION PLATE**



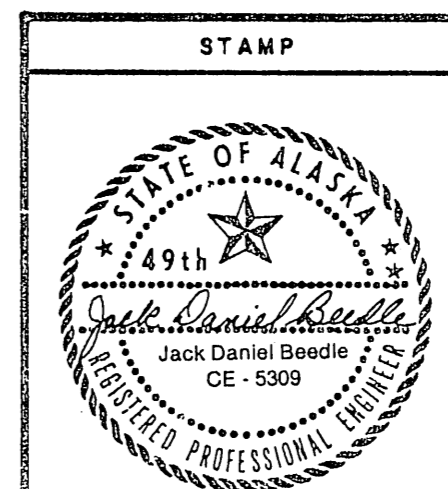
**GANGWAY CONNECTION DETAIL**



**HANGER STRAP ASSY.**  
2 Req'd.



**HANGER LINK**



DO NOT SCALE THIS DRAWING - USE DIMENSIONS			
STATE OF ALASKA			
DEPARTMENT OF TRANSPORTATION AND PUBLIC FACILITIES			
PORT PROTECTION		ALASKA	
<b>GANGWAY MODIFICATION DETAILS</b>			
DESIGNED TS	CHECKED JDB	DRAWN TS	DATE
PROJECT			

*As BUILT*  
Mark Johnson  
7/3/92