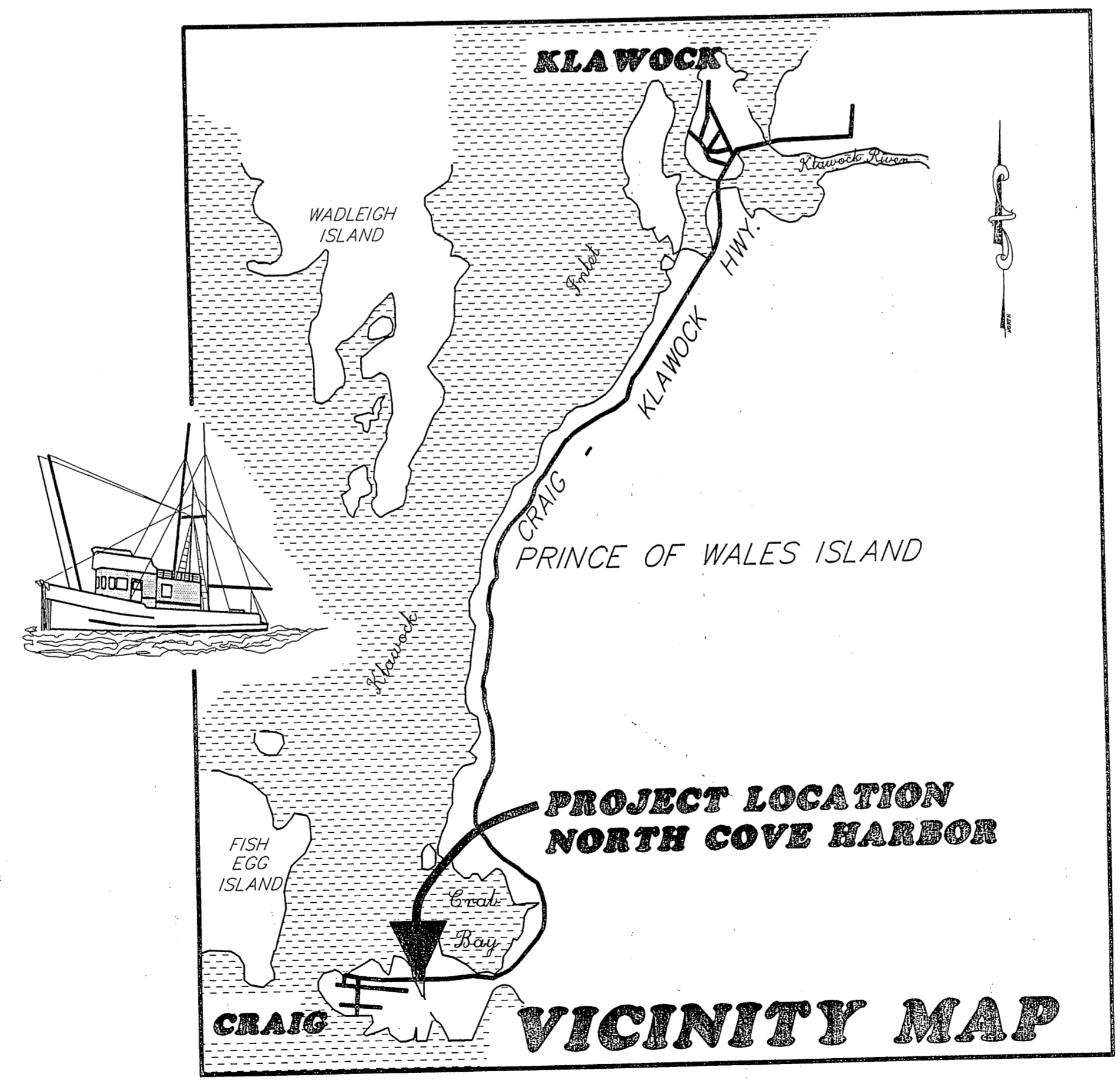


CRAIG NORTH COVE HARBOR ELECTRICAL PROJECT NO. 70649B

INDEX OF SHEETS	
SHEET NO.	DESCRIPTION
1	TITLE SHEET
2 & 3	LINE DRAWINGS
4 - 7	DETAILS



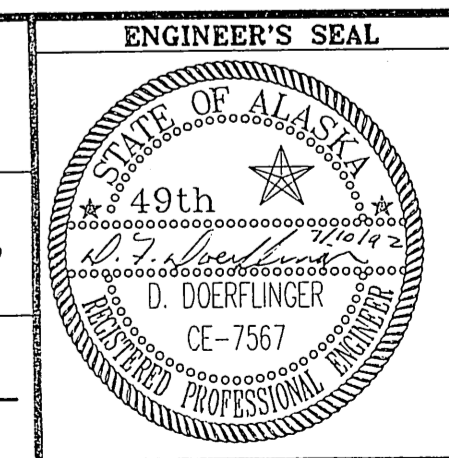
STATE OF ALASKA
DEPARTMENT OF TRANSPORTATION
AND PUBLIC FACILITIES

B.C. HAIGHT
CONSULTING ENGINEERS

PROJECT NUMBER:
70649B

DATE:
JULY 10, 1992

SHEET **1** OF **7**

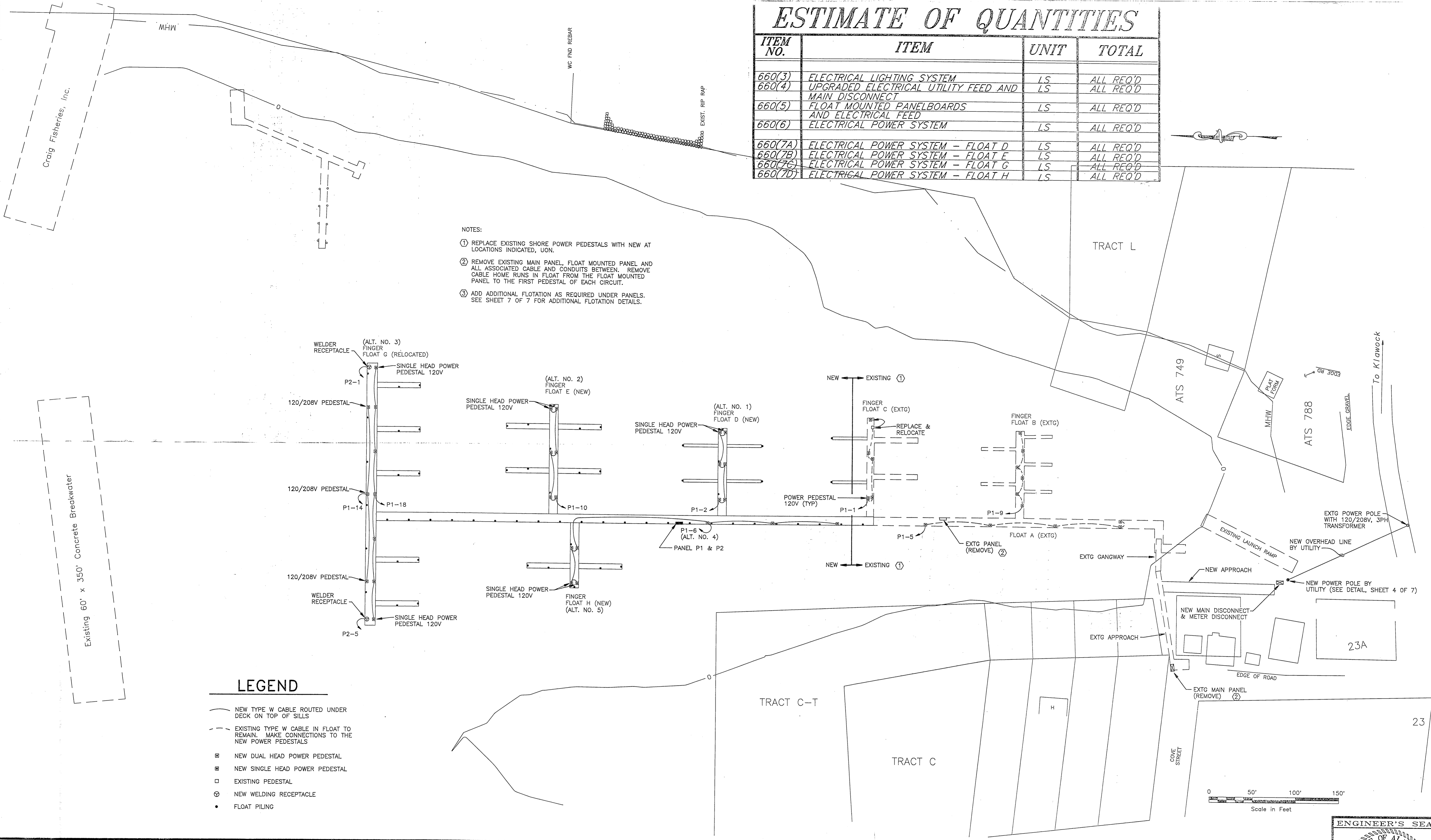


ESTIMATE OF QUANTITIES

ITEM NO.	ITEM	UNIT	TOTAL
660(3)	ELECTRICAL LIGHTING SYSTEM	LS	ALL REQ'D
660(4)	UPGRADED ELECTRICAL UTILITY FEED AND MAIN DISCONNECT	LS	ALL REQ'D
660(5)	FLOAT MOUNTED PANELBOARDS AND ELECTRICAL FEED	LS	ALL REQ'D
660(6)	ELECTRICAL POWER SYSTEM	LS	ALL REQ'D
660(7A)	ELECTRICAL POWER SYSTEM - FLOAT D	LS	ALL REQ'D
660(7B)	ELECTRICAL POWER SYSTEM - FLOAT E	LS	ALL REQ'D
660(7C)	ELECTRICAL POWER SYSTEM - FLOAT G	LS	ALL REQ'D
660(7D)	ELECTRICAL POWER SYSTEM - FLOAT H	LS	ALL REQ'D

NOTES:

- ① REPLACE EXISTING SHORE POWER PEDESTALS WITH NEW AT LOCATIONS INDICATED, UON.
- ② REMOVE EXISTING MAIN PANEL, FLOAT MOUNTED PANEL AND ALL ASSOCIATED CABLE AND CONDUITS BETWEEN. REMOVE CABLE HOME RUNS IN FLOAT FROM THE FLOAT MOUNTED PANEL TO THE FIRST PEDESTAL OF EACH CIRCUIT.
- ③ ADD ADDITIONAL FLOTATION AS REQUIRED UNDER PANELS. SEE SHEET 7 OF 7 FOR ADDITIONAL FLOTATION DETAILS.



LEGEND

- NEW TYPE W CABLE ROUTED UNDER DECK ON TOP OF SILLS
- - - EXISTING TYPE W CABLE IN FLOAT TO REMAIN. MAKE CONNECTIONS TO THE NEW POWER PEDESTALS
- ▣ NEW DUAL HEAD POWER PEDESTAL
- ▣ NEW SINGLE HEAD POWER PEDESTAL
- EXISTING PEDESTAL
- ⊙ NEW WELDING RECEPTACLE
- FLOAT PILING

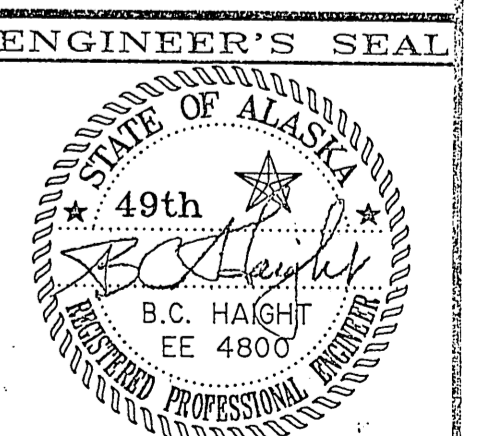
BY:	DATE:	DESCRIPTION OF CHANGE:

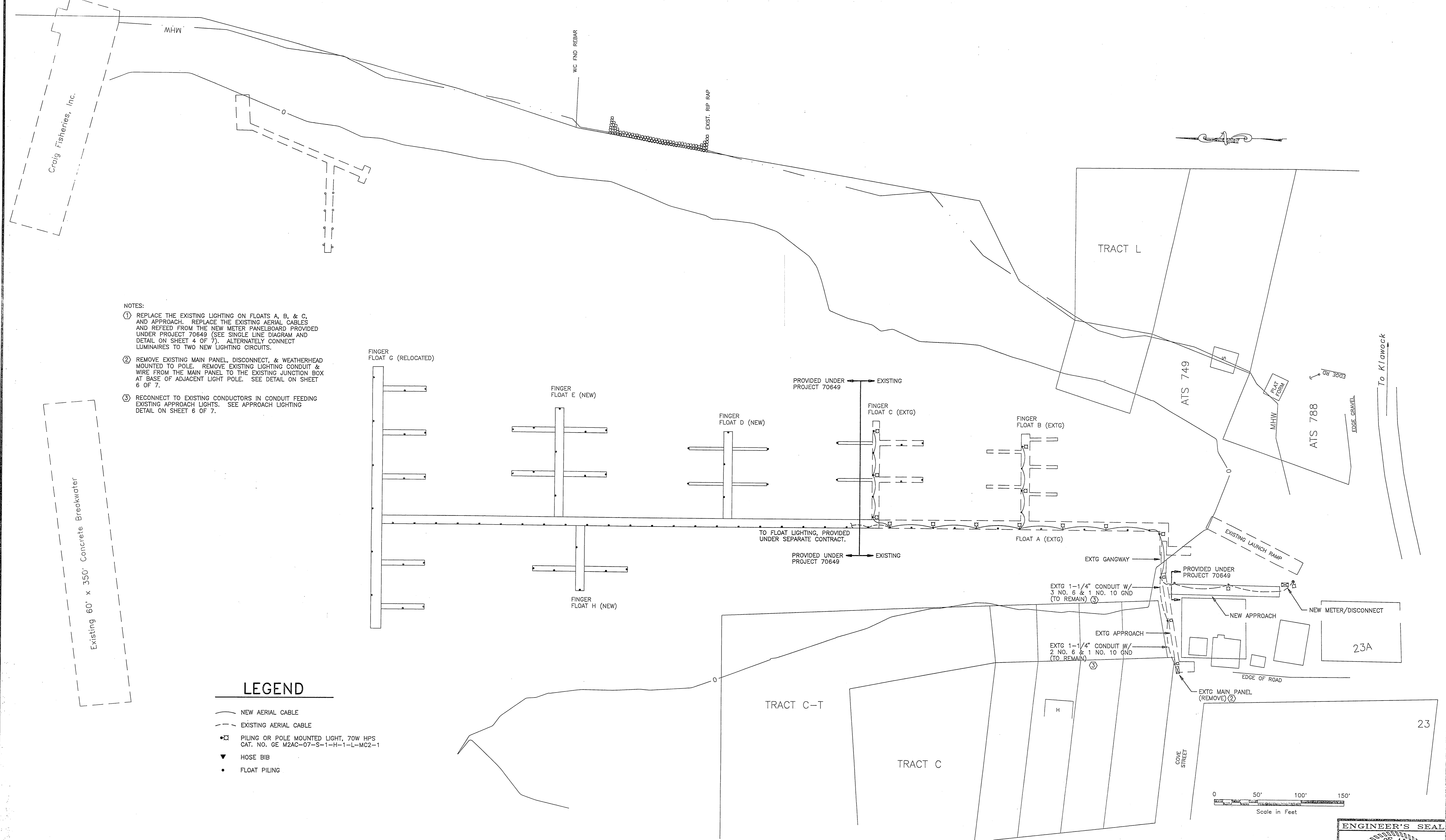
STATE OF ALASKA
 DEPARTMENT OF TRANSPORTATION
 AND PUBLIC FACILITIES
 SOUTHEAST REGION DESIGN & CONSTRUCTION

CRAIG

ELECTRICAL - POWER & LIGHTING

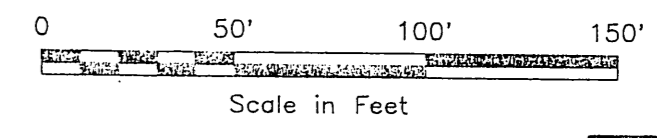
ALASKA	DESIGNED BY: TSM	PROJECT No. 70649B
	DRAWN BY: PEL	DATE: JULY 10, 1992
	CHECKED BY: BCH	SHEET 2 OF 7





- NOTES:
- ① REPLACE THE EXISTING LIGHTING ON FLOATS A, B, & C, AND APPROACH. REPLACE THE EXISTING AERIAL CABLES AND REFEED FROM THE NEW METER PANELBOARD PROVIDED UNDER PROJECT 70649 (SEE SINGLE LINE DIAGRAM AND DETAIL ON SHEET 4 OF 7). ALTERNATELY CONNECT LUMINAIRES TO TWO NEW LIGHTING CIRCUITS.
 - ② REMOVE EXISTING MAIN PANEL, DISCONNECT, & WEATHERHEAD MOUNTED TO POLE. REMOVE EXISTING LIGHTING CONDUIT & WIRE FROM THE MAIN PANEL TO THE EXISTING JUNCTION BOX AT BASE OF ADJACENT LIGHT POLE. SEE DETAIL ON SHEET 6 OF 7.
 - ③ RECONNECT TO EXISTING CONDUCTORS IN CONDUIT FEEDING EXISTING APPROACH LIGHTS. SEE APPROACH LIGHTING DETAIL ON SHEET 6 OF 7.

- LEGEND**
- NEW AERIAL CABLE
 - - - EXISTING AERIAL CABLE
 - ⊠ PILING OR POLE MOUNTED LIGHT, 70W HPS CAT. NO. GE M2AC-07-S-1-H-1-L-MC2-1
 - ▼ HOSE BIB
 - FLOAT PILING



BY:	DATE:	DESCRIPTION OF CHANGE:

RECORD OF REVISIONS

STATE OF ALASKA
 DEPARTMENT OF TRANSPORTATION
 AND PUBLIC FACILITIES
 SOUTHEAST REGION DESIGN & CONSTRUCTION

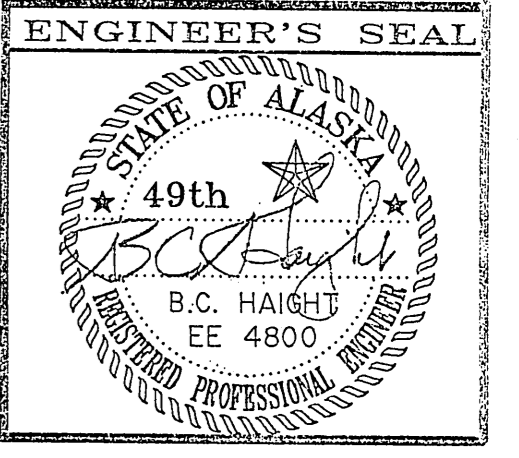
CRAIG

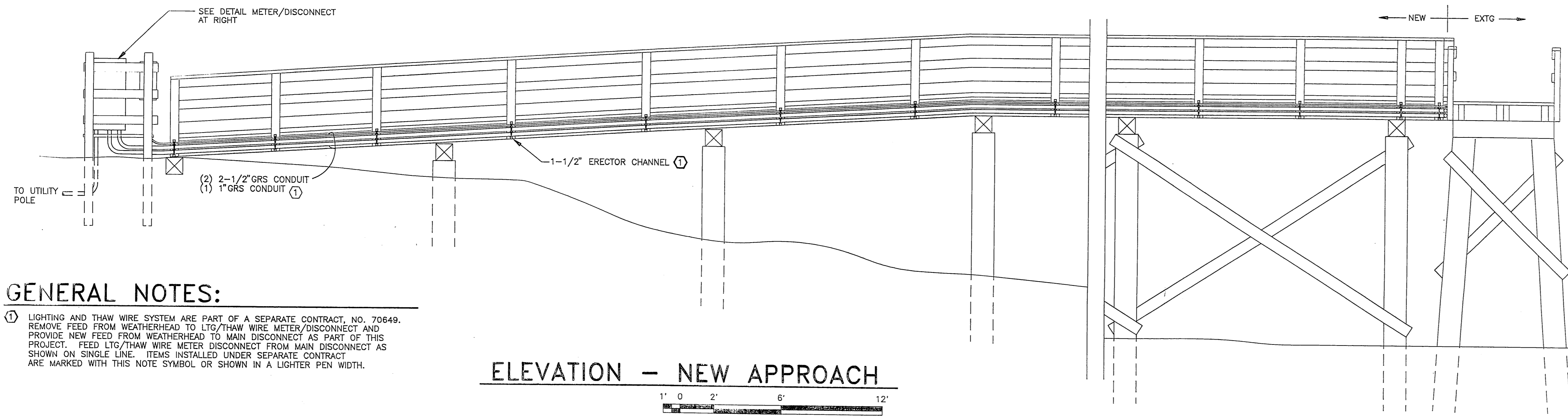
ELECTRICAL - POWER & LIGHTING

ALASKA

DESIGNED BY: TSM
 DRAWN BY: PEL
 CHECKED BY: BCH

PROJECT No. 70649B
 DATE: JULY 10, 1992
 SHEET 3 OF 7

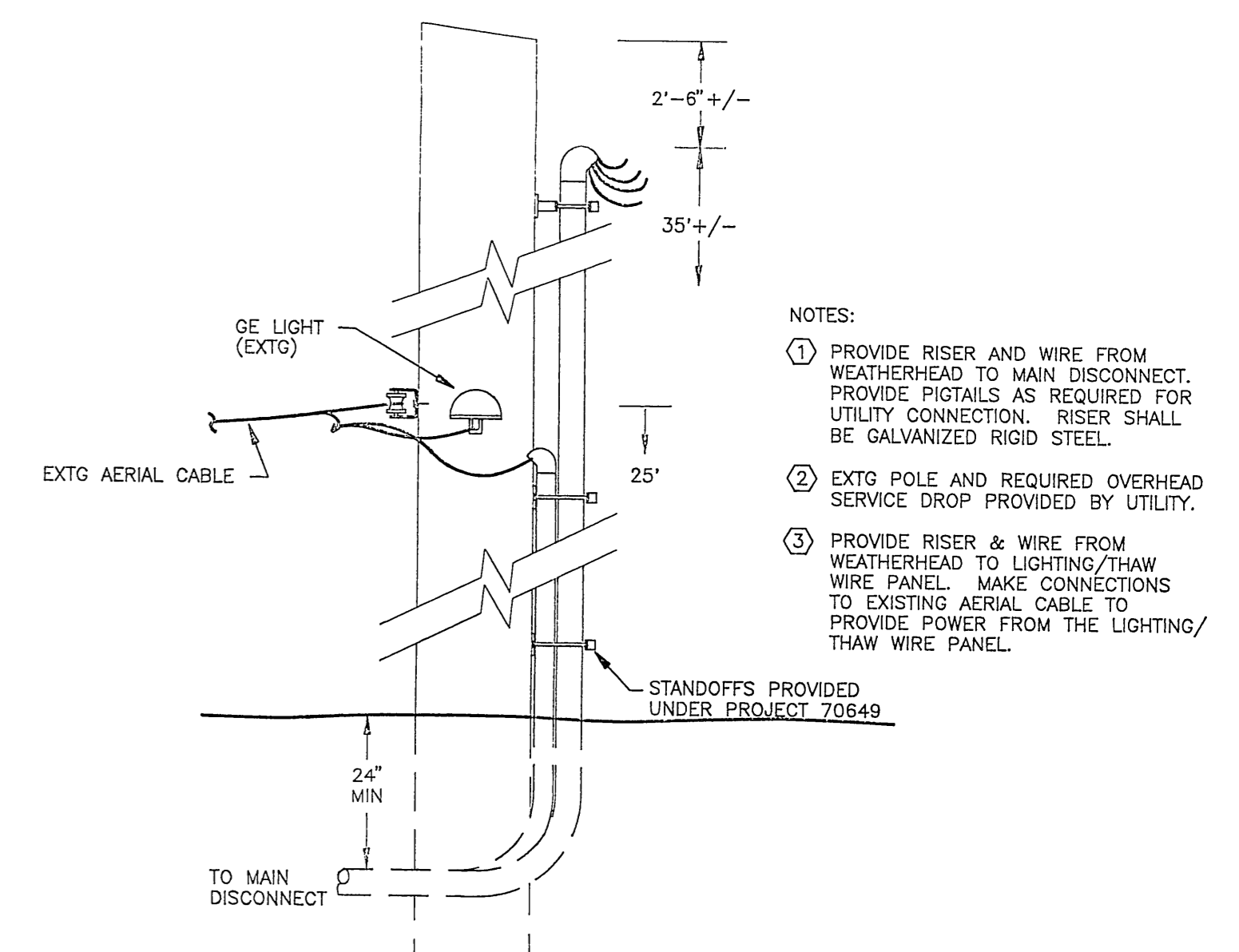
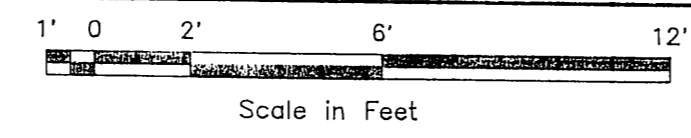




GENERAL NOTES:

① LIGHTING AND THAW WIRE SYSTEM ARE PART OF A SEPARATE CONTRACT, NO. 70649. REMOVE FEED FROM WEATHERHEAD TO LIGHTING THAW WIRE METER/DISCONNECT AND PROVIDE NEW FEED FROM WEATHERHEAD TO MAIN DISCONNECT AS PART OF THIS PROJECT. FEED LIGHTING THAW WIRE METER/DISCONNECT FROM MAIN DISCONNECT AS SHOWN ON SINGLE LINE. ITEMS INSTALLED UNDER SEPARATE CONTRACT ARE MARKED WITH THIS NOTE SYMBOL OR SHOWN IN A LIGHTER PEN WIDTH.

ELEVATION - NEW APPROACH



NOTES:

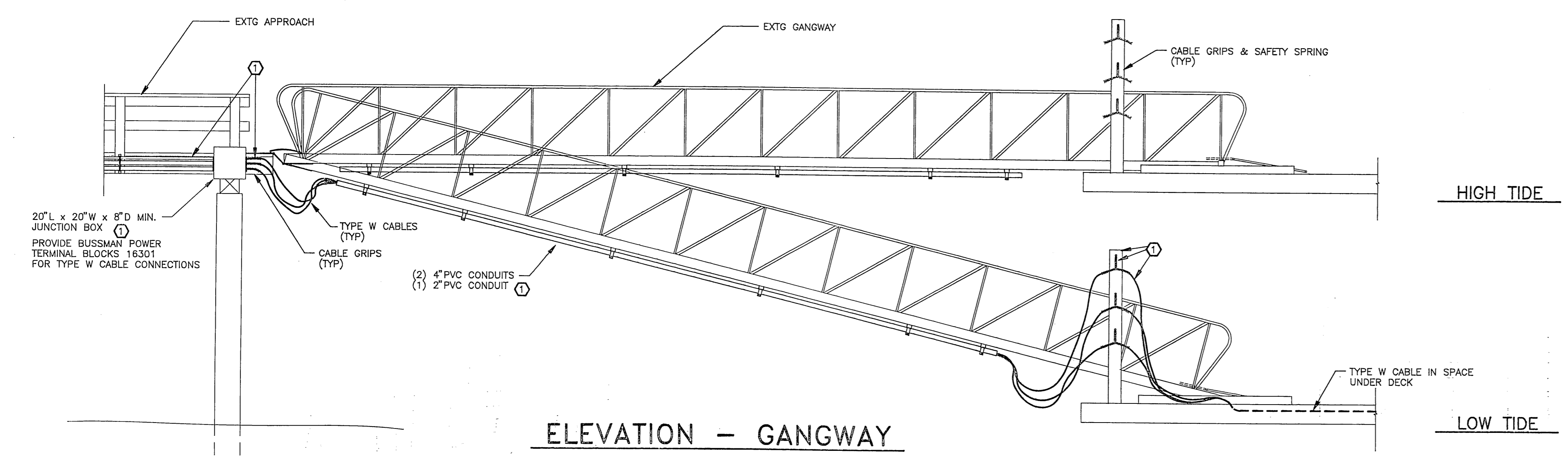
① PROVIDE RISER AND WIRE FROM WEATHERHEAD TO MAIN DISCONNECT. PROVIDE PIGTAILS AS REQUIRED FOR UTILITY CONNECTION. RISER SHALL BE GALVANIZED RIGID STEEL.

② EXTG POLE AND REQUIRED OVERHEAD SERVICE DROP PROVIDED BY UTILITY.

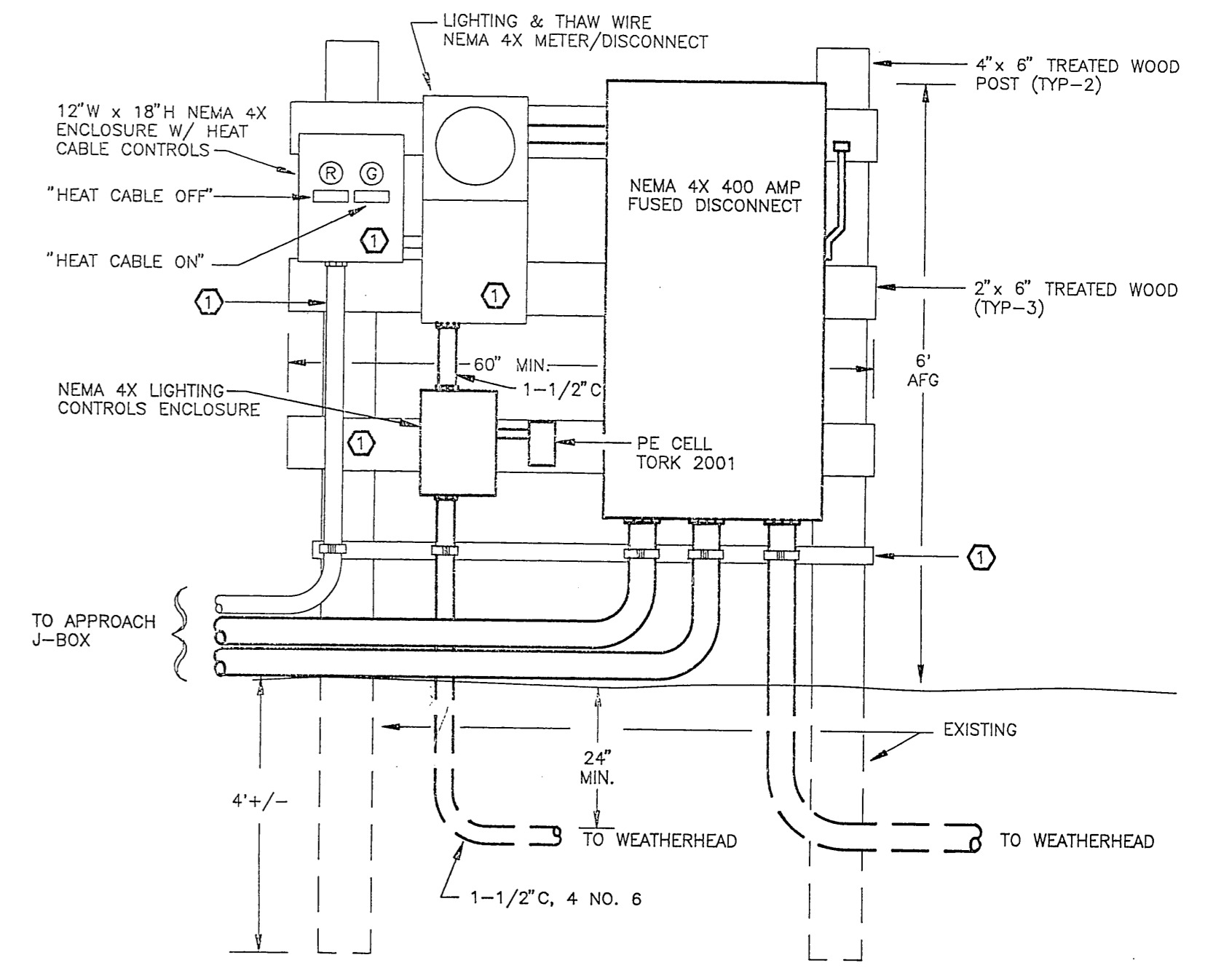
③ PROVIDE RISER & WIRE FROM WEATHERHEAD TO LIGHTING/THAW WIRE PANEL. MAKE CONNECTIONS TO EXISTING AERIAL CABLE TO PROVIDE POWER FROM THE LIGHTING/THAW WIRE PANEL.

DETAIL - OVERHEAD SERVICE DROP

NO SCALE

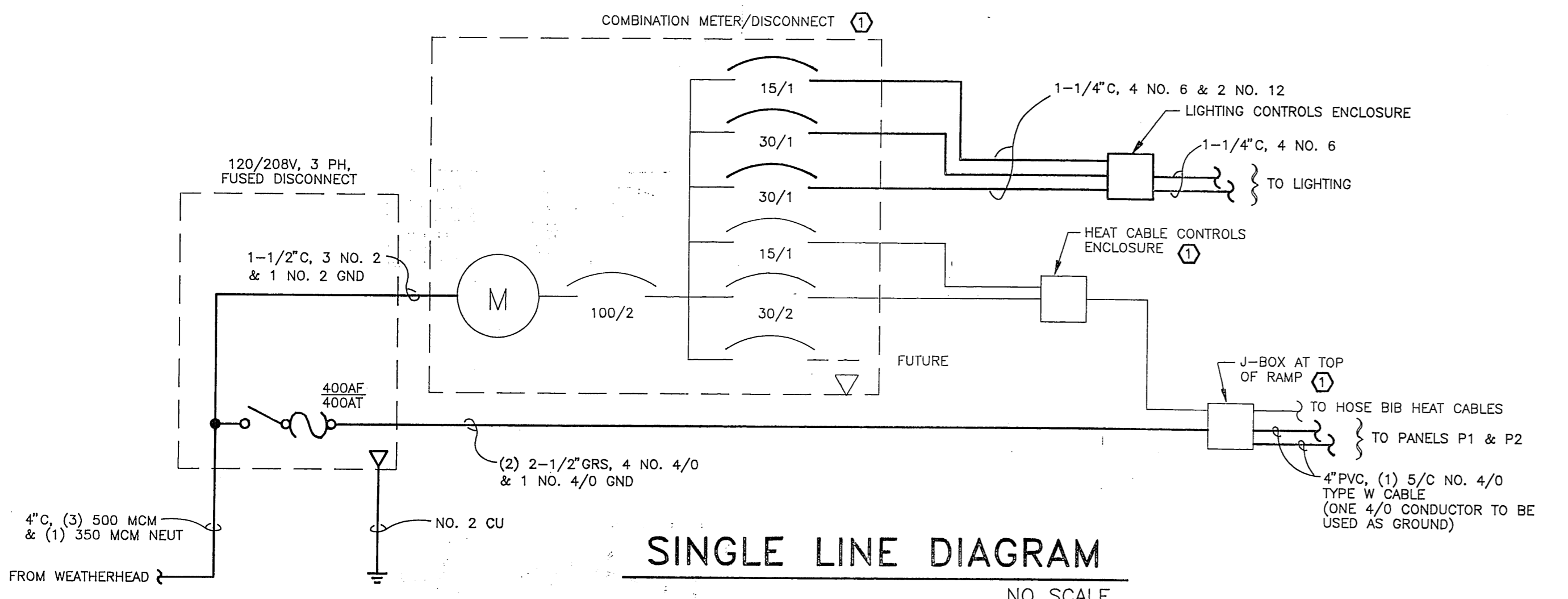


ELEVATION - GANGWAY



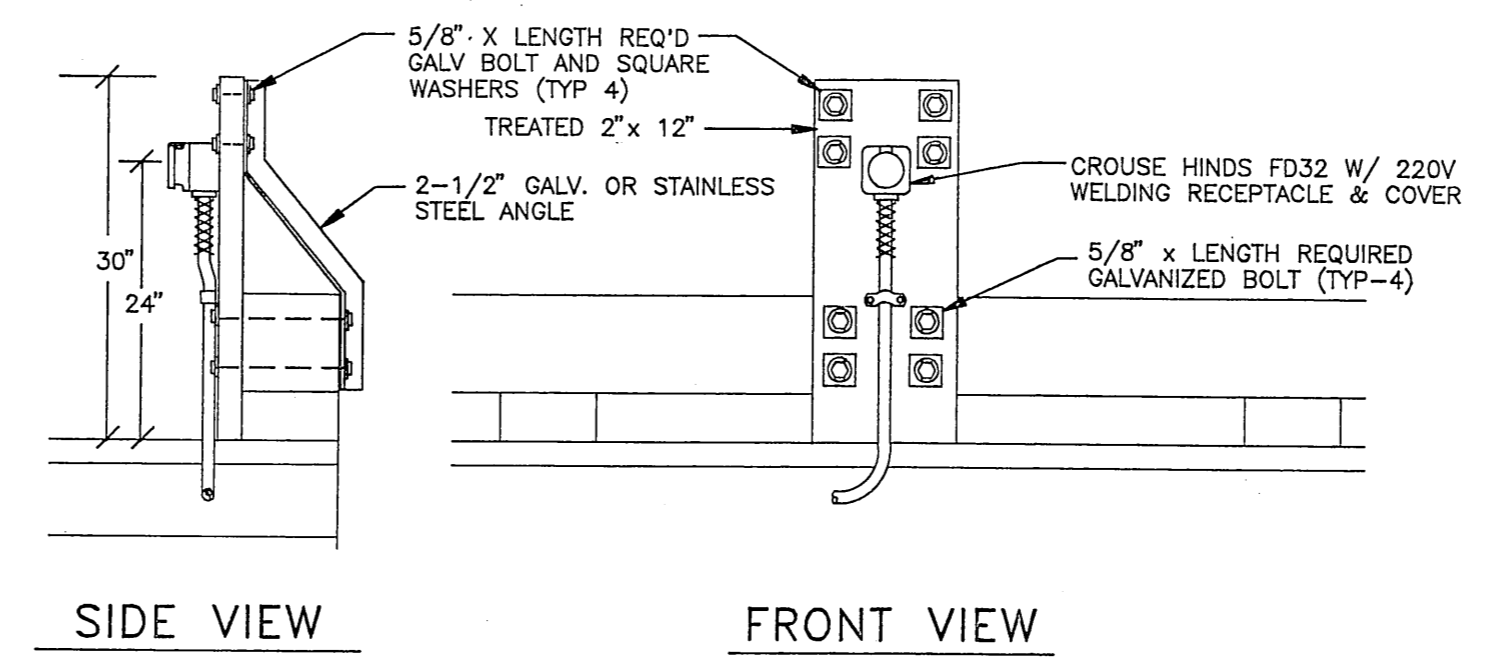
DETAIL - METER/DISCONNECT

NO SCALE



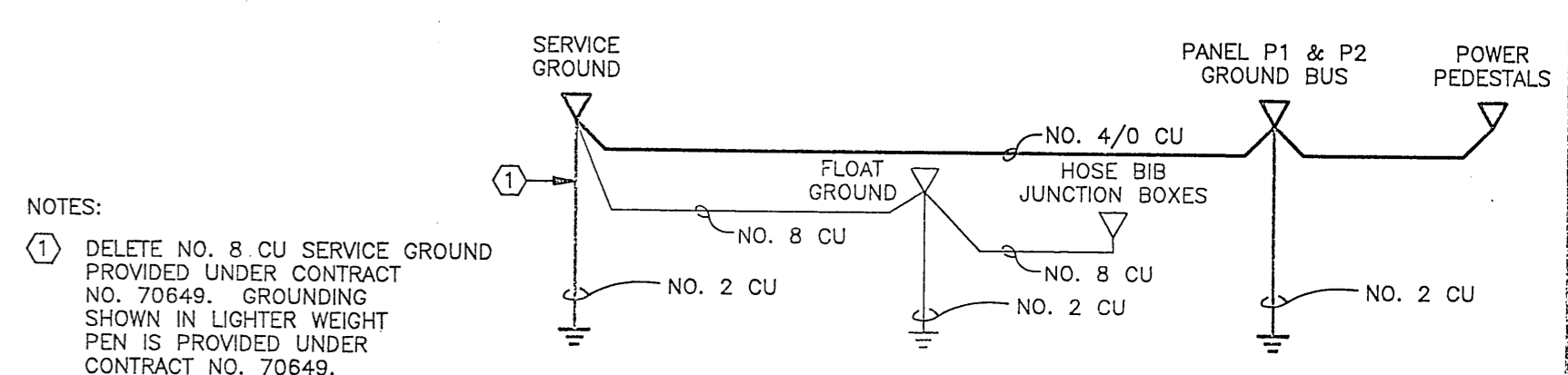
SINGLE LINE DIAGRAM

NO SCALE



ELEVATION - WELDER RECEPTACLE

NO SCALE



GROUNDING SCHEMATIC

NO SCALE

NOTES:

① DELETE NO. 8 CU SERVICE GROUND PROVIDED UNDER CONTRACT NO. 70649. GROUNDING SHOWN IN LIGHTER WEIGHT PEN IS PROVIDED UNDER CONTRACT NO. 70649.

BY:	DATE:	DESCRIPTION OF CHANGE:

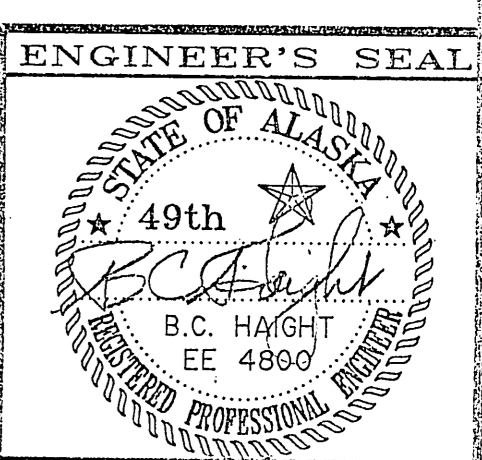
STATE OF ALASKA
DEPARTMENT OF TRANSPORTATION
AND PUBLIC FACILITIES
SOUTHEAST REGION DESIGN & CONSTRUCTION

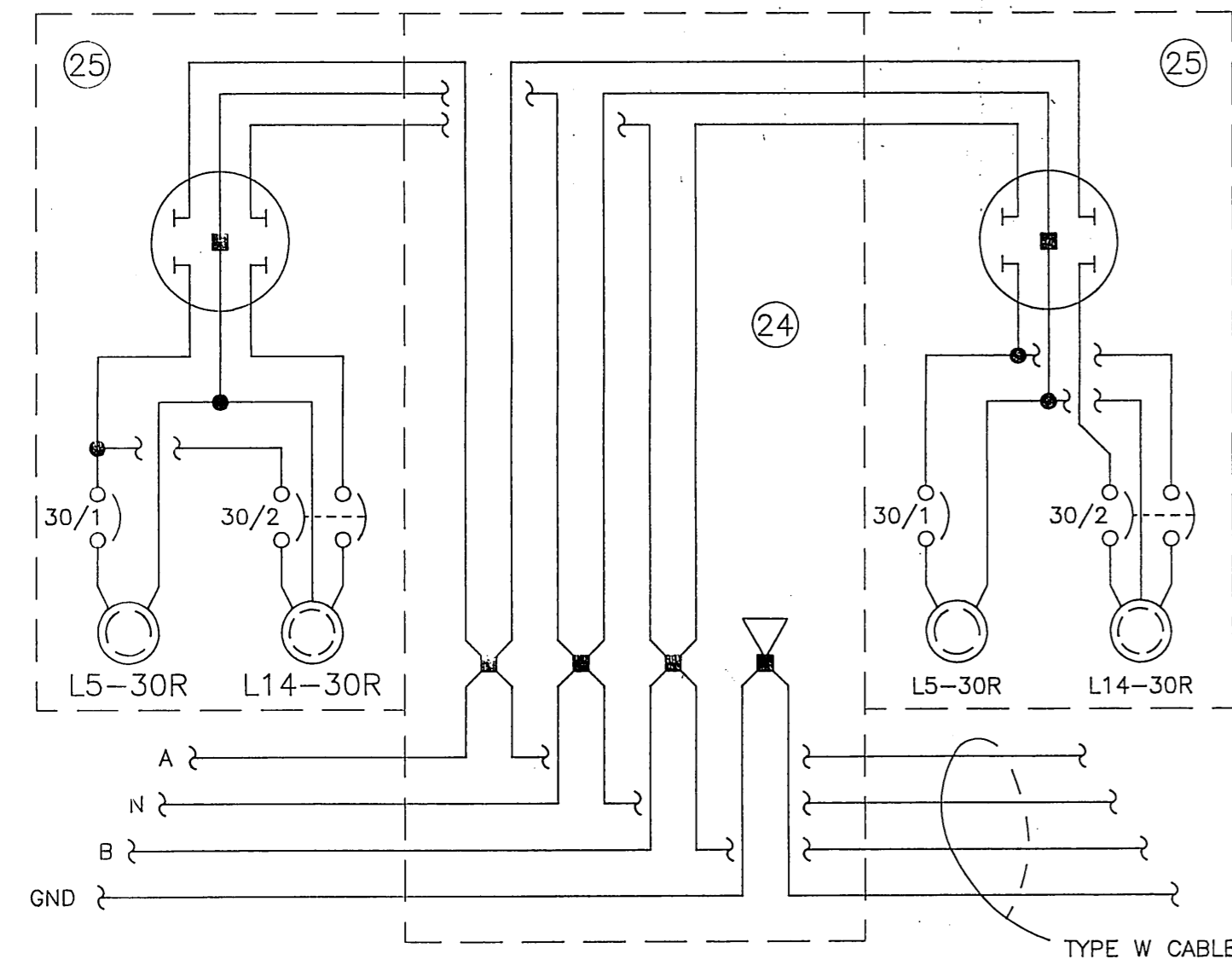
CRAIG

ELECTRICAL - POWER & LIGHTING

ALASKA

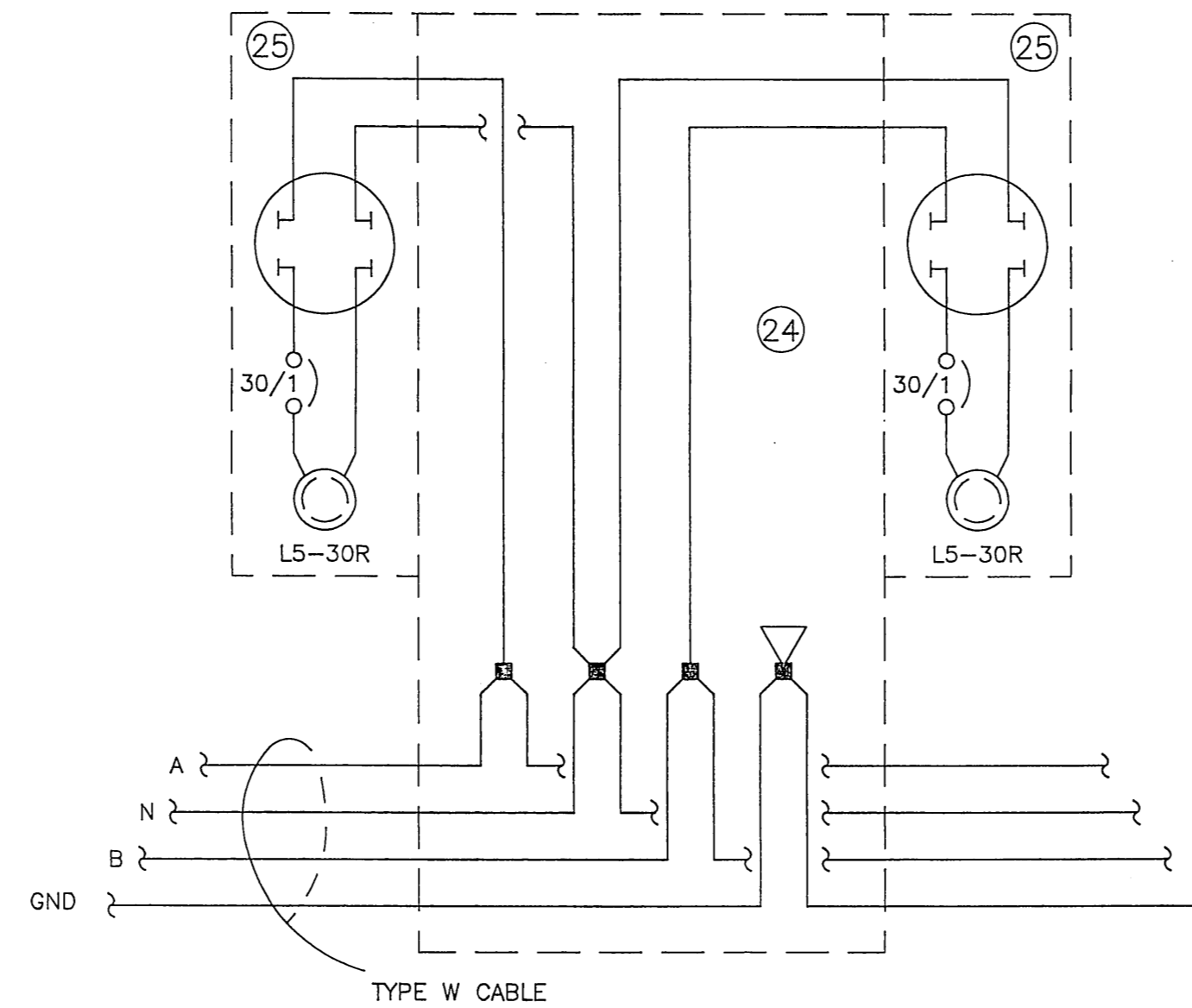
DESIGNED BY:	TSM	PROJECT No.	70649B
DRAWN BY:	PEL	DATE:	JULY 10, 1992
CHECKED BY:	BCH	SHEET	4 OF 7





RISER DIAGRAM - 120/208 VOLT PEDESTAL

NO SCALE



RISER DIAGRAM - 120 VOLT PEDESTAL

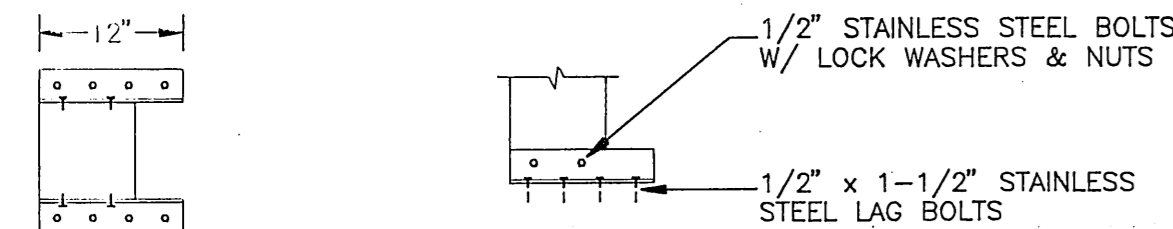
NO SCALE

NOTE: PROVIDE A SPARE SET OF LUGS FOR A FUTURE FEEDER CONDUCTOR.

C K T NO	WIRE NO/ SIZE	DESCRIPTION	SIZE		VOLTS/PHASE			BREAKER AMP/ POLE	DESCRIPTION	WIRE NO/ SIZE	C K T NO
			400 AMPS	120/208V, 3 PH	LUGS ONLY						
1	4/4	FLOAT C SHORETIES (EXTG)	60/2	5.0	10.0	BØ	5.0	60/2	FLOAT D SHORETIES	4/4	2
3				5.0	10.0		5.0				4
5	4/2	FLOAT A SHORETIES (EXTG)	60/2	4.2	11.7		7.5	100/2	MAIN & H FLOAT SHORETIES	4/1/0	6
7				4.2	11.7		7.5				8
9	4/2	FLOAT B SHORETIES (EXTG)	60/2	6.0	12.3		6.3	80/2	FLOAT E SHORETIES	4/2	10
11				6.0			6.3				12
13					3.8		3.8	60/2	FLOAT G NORTH SHORETIES	4/2	14
15	4/4	PANEL P2 (VIA METER)	100/2	7.2	11.0		3.8				16
17				6.6		14.1	7.5	100/2	FLOAT G SOUTH SHORETIES	4/1/0	18
19					7.5		7.5				20
21											22
23											24
25											26
27											28
29											30
31											32
33											34
35											36
37											38
39											40
41											42
TOTAL CONNECTED LOAD = 104.4 KVA / 290 AMPS											

C K T NO	WIRE NO/ SIZE	DESCRIPTION	SIZE		VOLTS/PHASE			BREAKER AMP/ POLE	DESCRIPTION	WIRE NO/ SIZE	C K T NO
			100 AMPS	120/208V, 1 PH	LUGS ONLY						
1	4/4	WELDER RECEPTACLE	50/2	3.3	3.9		0.6	20/1*	UTILITY RECEPTACLE	2/12	2
3				3.3	3.3						4
5	4/4	WELDER RECEPTACLE	50/2	3.3	3.3						6
7				3.3	3.3						8
9											10
11											12
13											14
15											16
17											18
19											20
21											22
23											24
TOTAL CONNECTED LOAD = 13.8 KVA / 38 AMPS											

* GFI

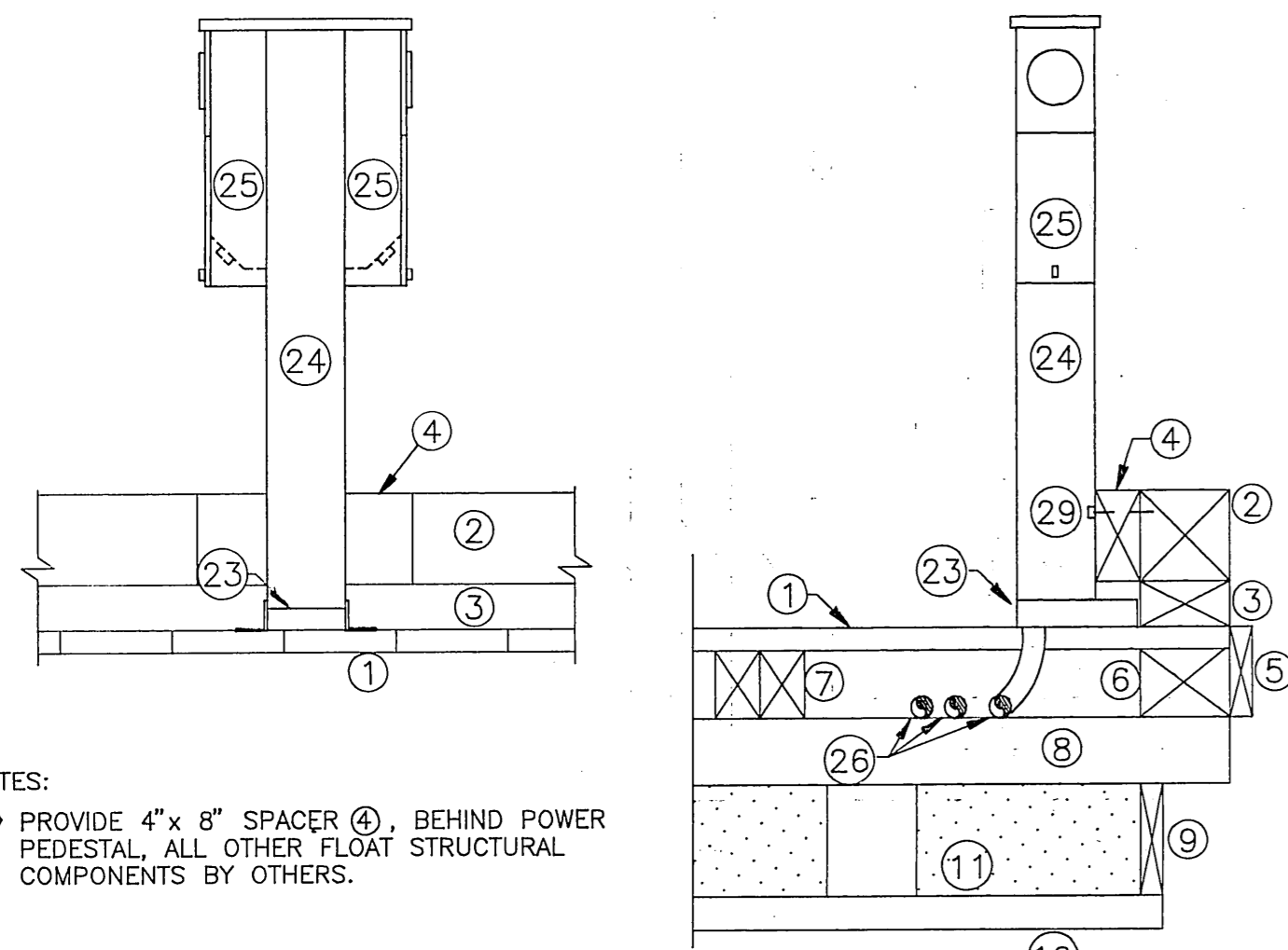


TOP VIEW

SIDE VIEW

DETAIL - PEDESTAL BASE

Scale in Feet

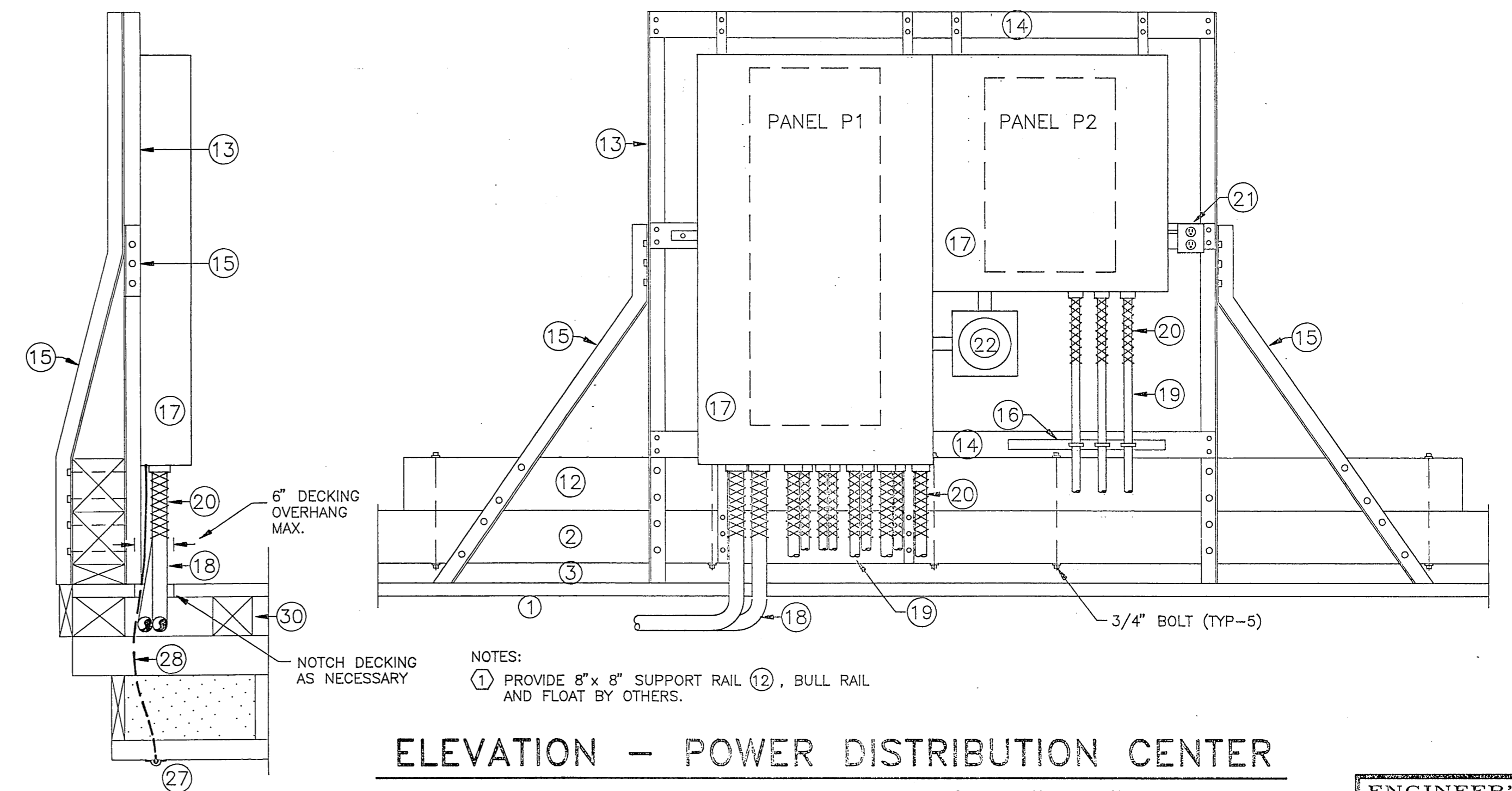


ELEVATION - POWER PEDESTAL

Scale in Feet

EQUIPMENT SCHEDULE:

- ① 2"x10" DECKING
- ② 8"x8" BULLRAIL
- ③ 4"x8" BLOCKING
- ④ 4"x8"x20" SPACER (NEW)
- ⑤ 2"x8" BUMPER BOARD
- ⑥ 6"x8" STRINGER
- ⑦ 4"x6" STRINGER
- ⑧ 6"x6" & 3"x6" SILLS
- ⑨ 2"x10" SIDING
- ⑩ 3"x6" SILL
- ⑪ 10"x20"x9" FLOTATION PLANKS
- ⑫ 8"x8" SUPPORT (NEW)
- ⑬ 2-1/2"x2-1/2"x1/4" ANGLE IRON STAND
- ⑭ 4"x1/4" FLAT STEEL PLATE
- ⑮ 2-1/2"x2-1/2"x1/4" ANGLE IRON BRACE
- ⑯ 1-1/2"x1-1/2"x1/4" ERECTOR CHANNEL
- ⑰ HOFFMAN FIBERGLASS NEMA 4X ENCLOSURE W/ CHROMALOX 1-1/2" x 6-1/2" 150W STRIP HEATER & THERMOSTAT (ALLEN BRADLEY BULLETIN 837)
- ⑱ TYPE W SERVICE CABLE
- ⑲ TYPE W FEEDER CABLE
- ⑳ CABLE GRIPS
- ㉑ UTILITY RECEPTACLE W/ WEATHERPROOF LOCKABLE COVER
- ㉒ METER BASE - 5 JAW
- ㉓ PEDESTAL BASE - 2-1/2"H x 4"W x 12", 1/4" STAINLESS STEEL ANGLE IRON (SEE DETAIL)
- ㉔ 8x10 PEDESTAL - 14 GA. STAINLESS STEEL (316)
- ㉕ POWER HEAD W/ METER BASE, CIRCUIT BREAKER, & RECEPTACLE & LOCKABLE COVER - 16 GA. STAINLESS STEEL (316)
- ㉖ TYPE W CABLES (TYP)
- ㉗ 3/4" x 8" GROUND ROD FASTENED TO BASE OF FLOAT W/ COPPER STRAPS, CONNECT TO SYSTEM GROUND
- ㉘ NO. 2 COPPER GROUND
- ㉙ 1/2" x 6" STAINLESS STEEL LAG BOLT
- ㉚ NEW 6"x6" TIMBER DECKING SUPPORT, SPANNING AT LEAST TWO SILLS AND SECURED TO SILLS W/ ONE 1/2" x 10" HOT-DIPPED GALVANIZED STEEL DRIFT PER SILL. DECKING TO BE SECURED TO SUPPORT W/ 2-20d BOX NAILS PER PLANK. THE SUPPORT SHALL BE TREATED TO 0.6 PCF RETENTION BY ASSAY PER A.W.P.A. C-18 (LATEST EDITION).



ELEVATION - POWER DISTRIBUTION CENTER

Scale in Feet

BY:	DATE:	DESCRIPTION OF CHANGE:

STATE OF ALASKA
DEPARTMENT OF TRANSPORTATION
AND PUBLIC FACILITIES
SOUTHEAST REGION DESIGN & CONSTRUCTION

CRAIG

ELECTRICAL - POWER & LIGHTING

ALASKA

DESIGNED BY:

TSM

DRAWN BY:

PEL

CHECKED BY:

BCH

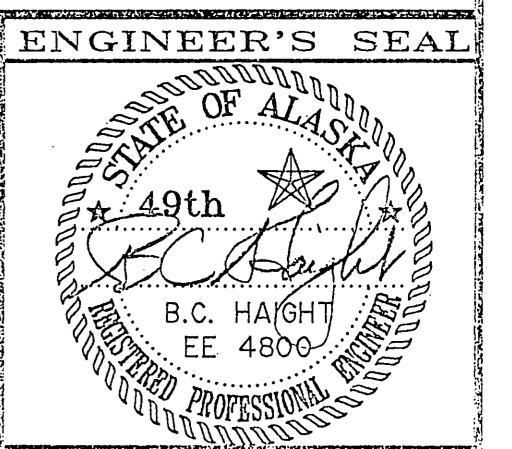
PROJECT No.

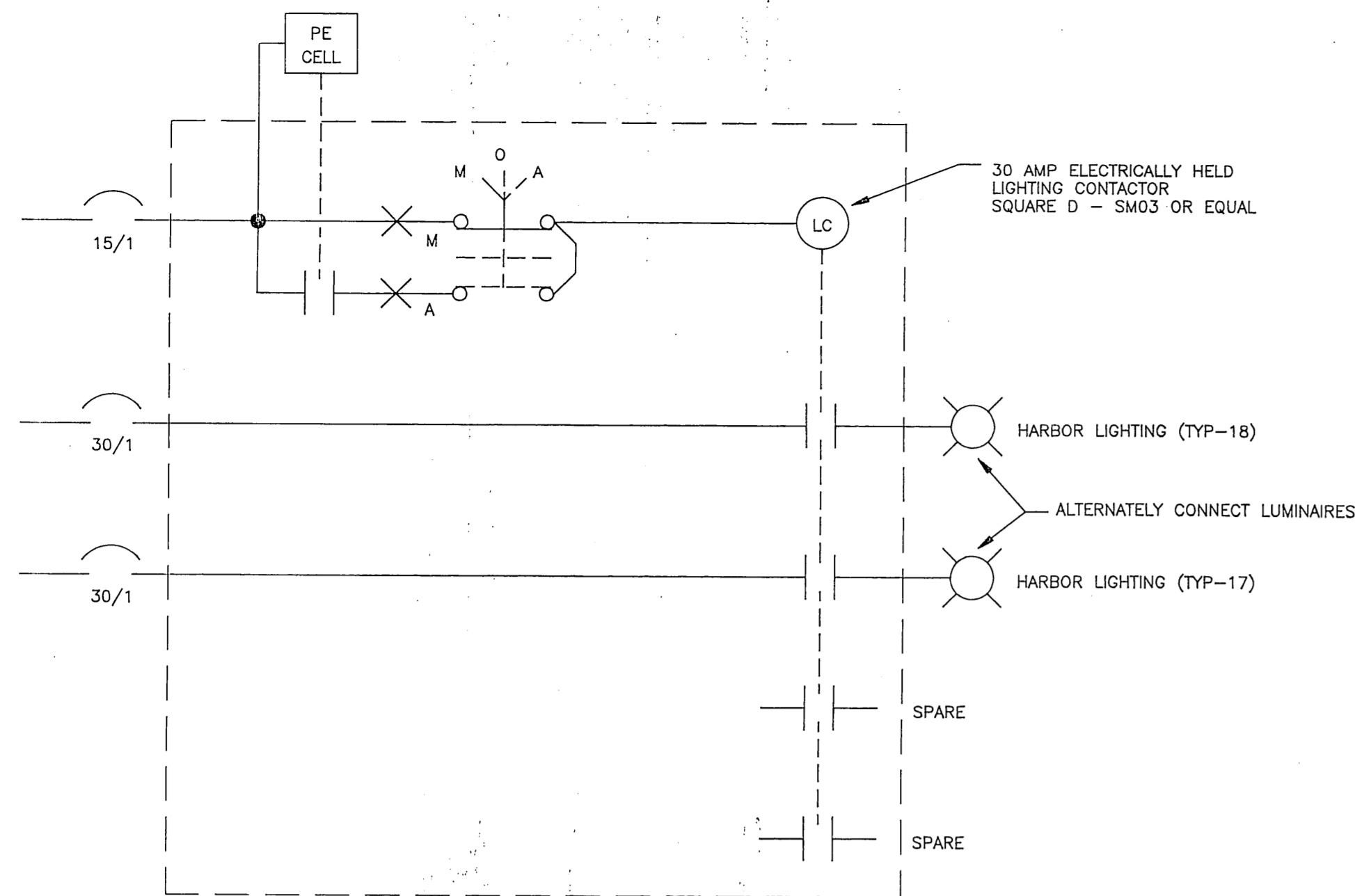
70649B

DATE:

JULY 10, 1992

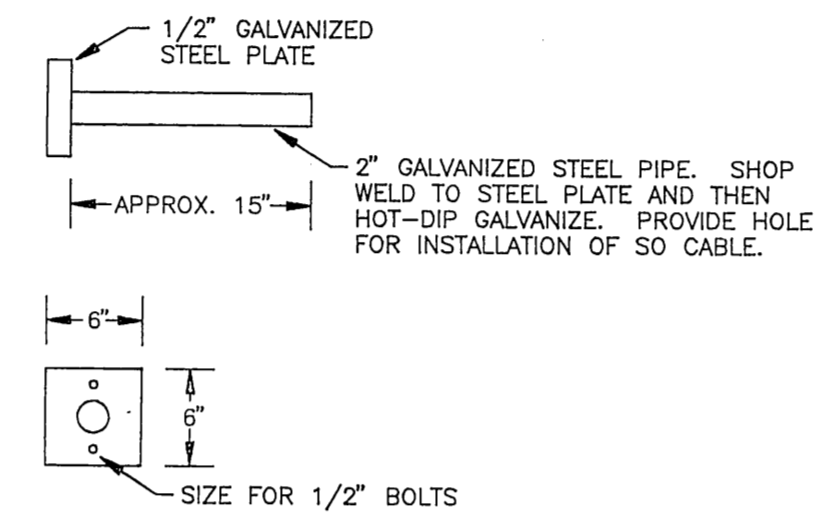
SHEET 5 OF 7





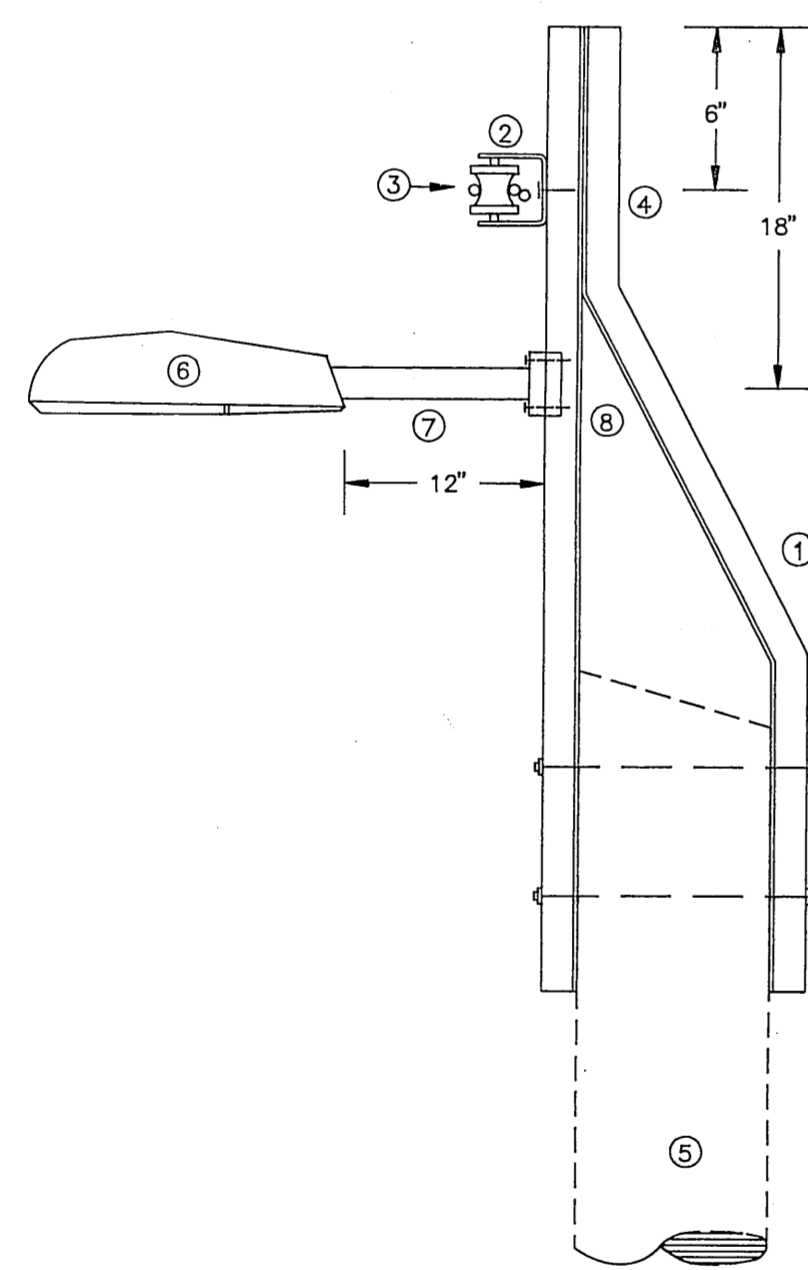
SCHEMATIC - LIGHTING CONTROLS

NO SCALE



DETAIL - POLE BRACKET

NO SCALE

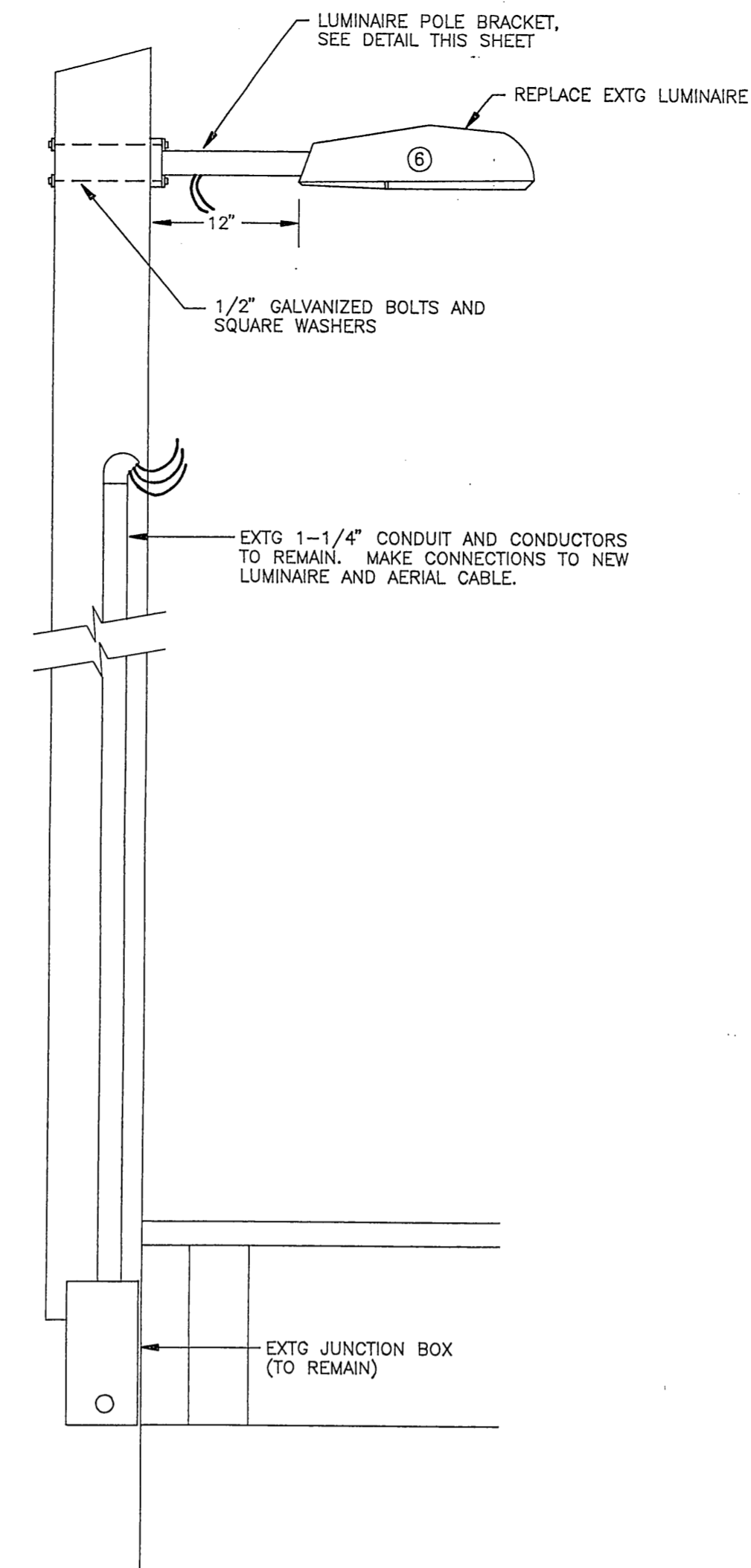


DETAIL - EXISTING PILING MOUNTED LUMINAIRE

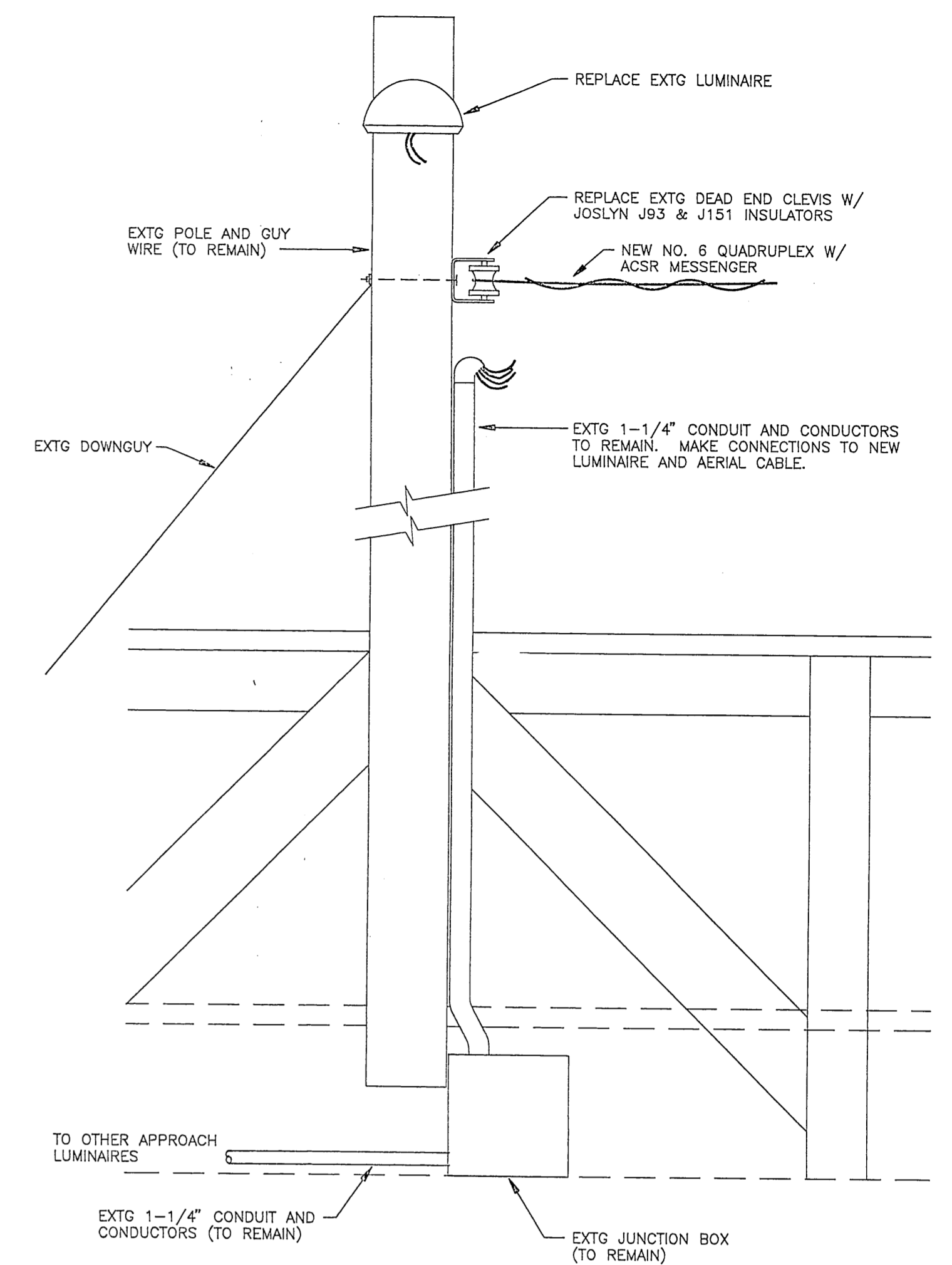
NO SCALE

EQUIPMENT / NOTES:

- ① EXTG HENDRIX BRACKET (TO REMAIN).
- ② CLEVIS & INSULATOR: JOSLYN J93 & J151. (REPLACE EXTG)
- ③ AERIAL CABLE: #6 QUADRUPLX CU WITH ACSR MESSENGER. (NEW)
- ④ 5/8" GALVANIZED BOLT. (NEW)
- ⑤ EXTG WOOD PILING
- ⑥ LUMINAIRE: GE M2AC-07-S-1-H-1-L-MC2-1, 70 WATT HIGH PRESSURE SODIUM. (REPLACE EXTG)
- ⑦ LUMINAIRE POLE BRACKET, SEE DETAIL THIS SHEET.
- ⑧ 1/2" GALVANIZED BOLTS. (NEW)
- ⑨ MAKE CONNECTION FROM AERIAL CABLE TO LUMINAIRE WITH 10/3 SO CABLE (BLACK). UTILIZE MECHANICAL TYPE CABLE TAPS, THOMAS & BETTS CT2 OR EQUAL W/ INSULATING BOOT CT2C. TAPE OVER BOOT W/ TWO LAYERS OF ELECTRICIANS TAPE. TY-RAP TO MESSENGER.
- ⑩ REPLACE EXTG LUMINAIRE, INSULATOR AND AERIAL CABLE. RECONFIGURE AS SHOWN.



APPROACH LIGHTING POLE (TYP-2)



TOP OF GANGWAY LIGHTING POLE (TYP-1)

DETAIL - APPROACH LIGHTING

BY:	DATE:	DESCRIPTION OF CHANGE:

STATE OF ALASKA
DEPARTMENT OF TRANSPORTATION
AND PUBLIC FACILITIES
SOUTHEAST REGION DESIGN & CONSTRUCTION

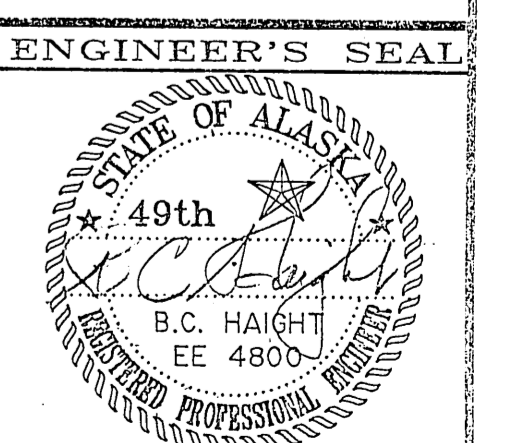
CRAIG

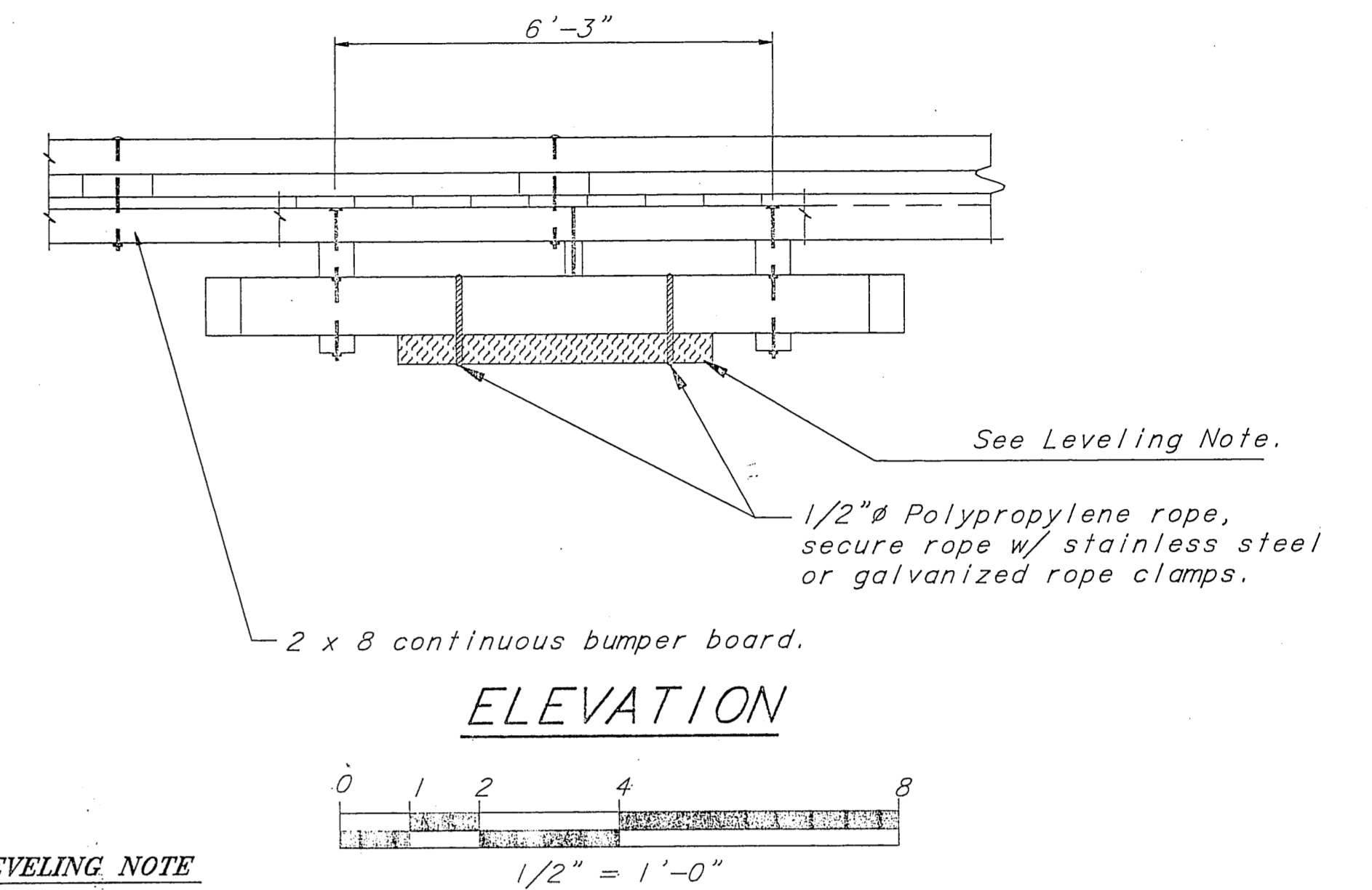
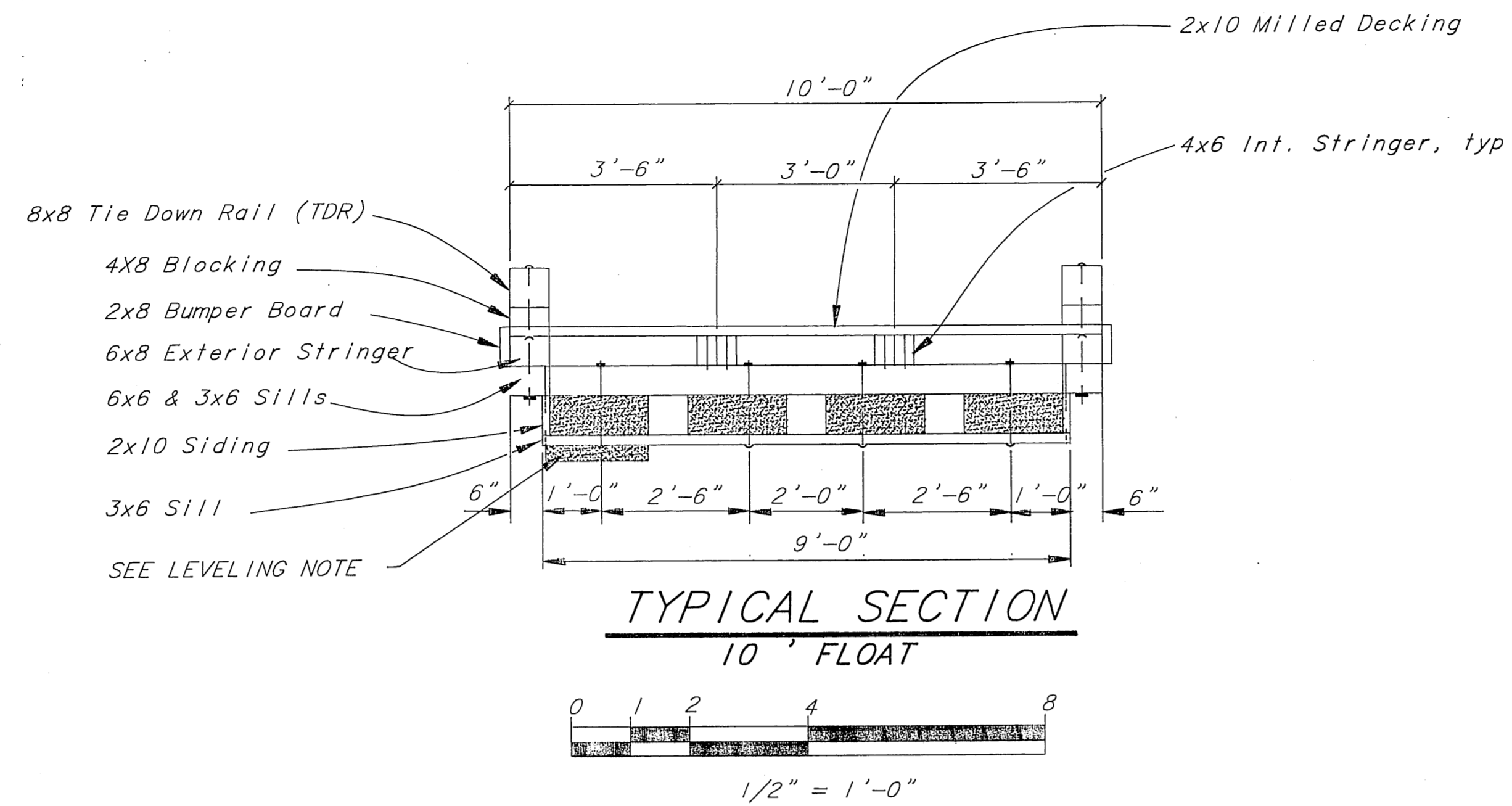
ELECTRICAL - POWER & LIGHTING

ALASKA

DESIGNED BY:	TSM
DRAWN BY:	PEL
CHECKED BY:	BCH

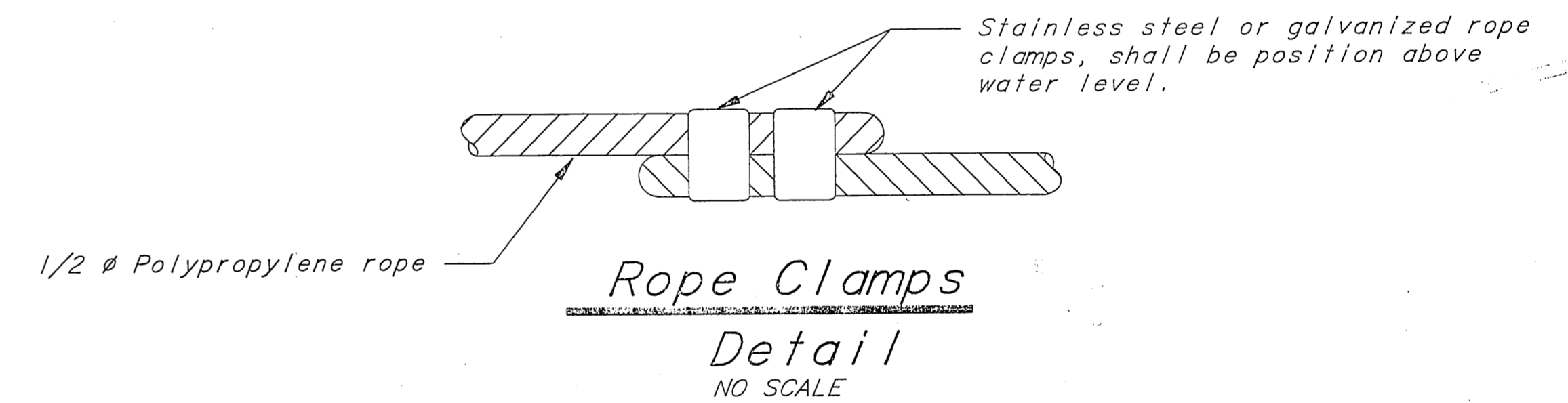
PROJECT No.	70649B
DATE:	JULY 10, 1992
SHEET	6 OF 7





LEVELING NOTE

For leveling, provide two 5" x 20" x 4'-6" coated polystyrene planks. Place one leveling plank between lower sill members on each side of the power distribution center. Secure each leveling plank with two 1/2" polypropylene ropes. (See Rope Clamp Detail this sheet.)



BY:	DATE:	DESCRIPTION OF CHANGE:

STATE OF ALASKA
 DEPARTMENT OF TRANSPORTATION
 AND PUBLIC FACILITIES
 SOUTHEAST REGION DESIGN & CONSTRUCTION

CRAIG

ADDITIONAL FLOTATION DETAILS

ALASKA	DESIGNED BY: D. DOERFLINGER	PROJECT No. 70649B
	DRAWN BY: AutoCAD/CSA	DATE: JULY 10, 1992
	CHECKED BY: D. DOERFLINGER	SHEET 7 OF 7

