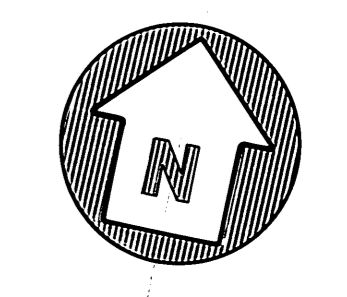
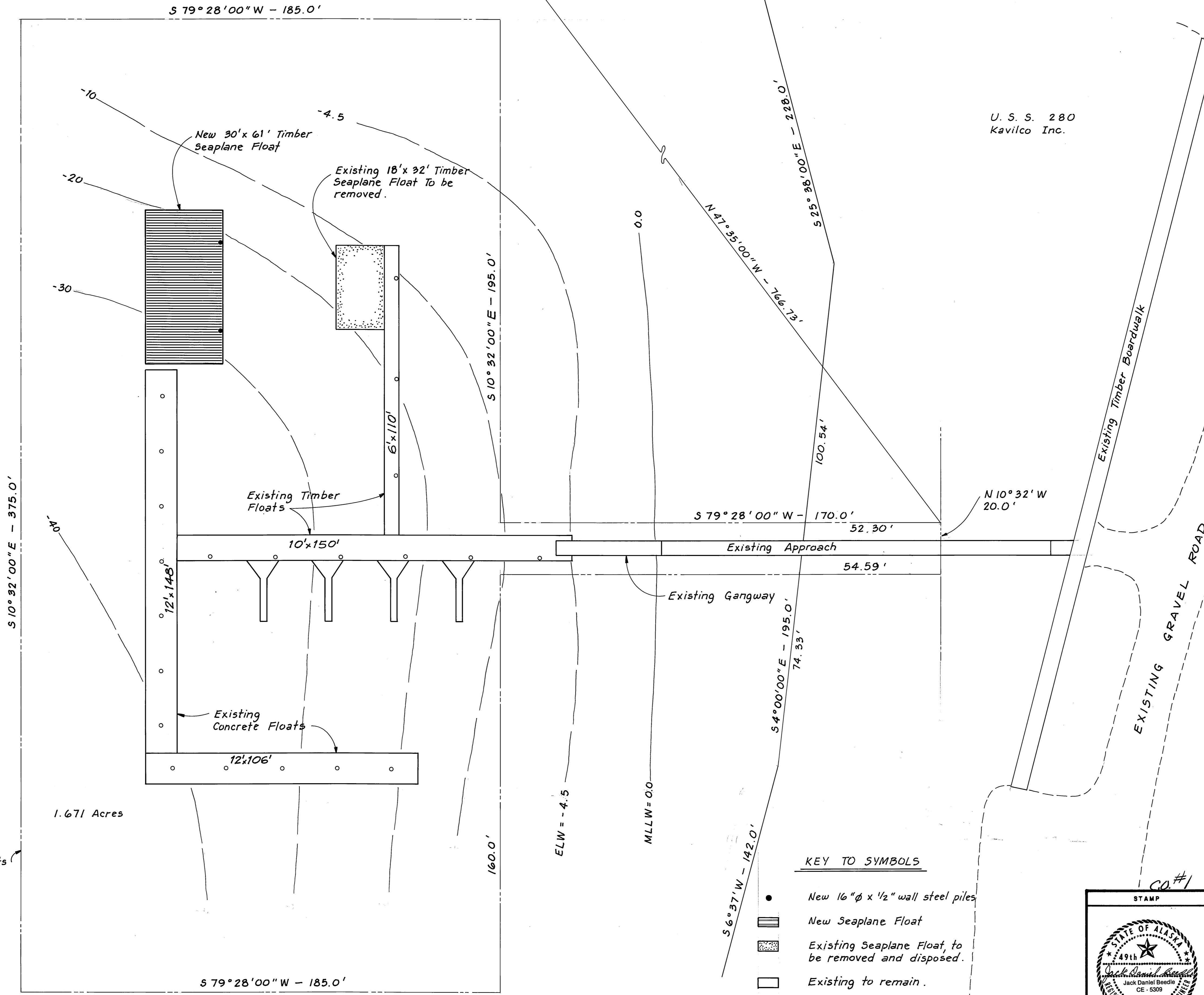


A. T. S. 106
Kavilco Inc.

A.T.S. 106
W.C.M.C. 1, 1961

U. S. S. 280
Kavilco Inc.



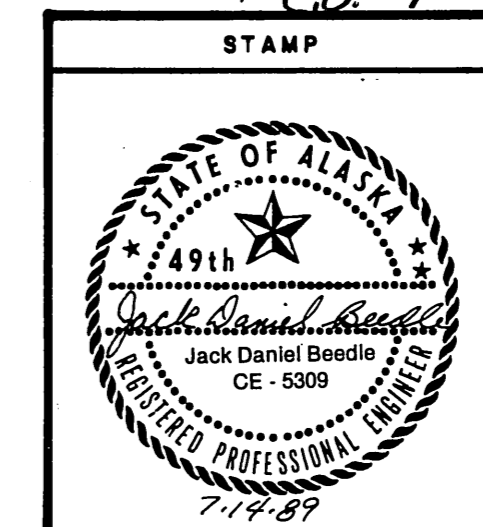
HORIZONTAL CONTROL
New seaplane float shall align with the existing concrete float per sheet 4.

VERTICAL CONTROL
Seaplane float pile cutoff elevation shall match the existing float pile cutoff elevation of $+28^{\circ}$ MLLW.

ESTIMATE OF QUANTITIES			
ITEM NO.	ITEM	UNIT	QUANTITY
110	Mobilization and Demobilization	L.S.	All Req'd.
120(1)	DBE Adjustment	C.S.	All Req'd.
201	Removal of Structures and Obstructions	L.S.	All Req'd.
301(1)	16" ϕ x 1/2" wall Structural Steel Piles, Furnished	L.F.	146
301(2)	16" ϕ x 1/2" wall Structural Steel Piles, Driven	Ea.	2
301(3)	Drilled Pile Sockets Deleted	Ea.	2
311	Construct Timber Seaplane Float	L.S.	All Req'd.
301(3A)	Steel Pile Seating	L.S.	" "

KEY TO SYMBOLS

- New 16" ϕ x 1/2" wall steel piles
- ▨ New Seaplane Float
- ▤ Existing Seaplane Float, to be removed and disposed.
- Existing to remain.



STAMP DO NOT SCALE THIS DRAWING - USE DIMENSIONS

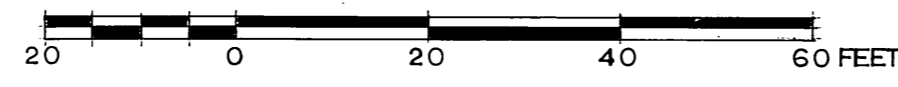
STATE OF ALASKA
DEPARTMENT OF TRANSPORTATION AND PUBLIC FACILITIES

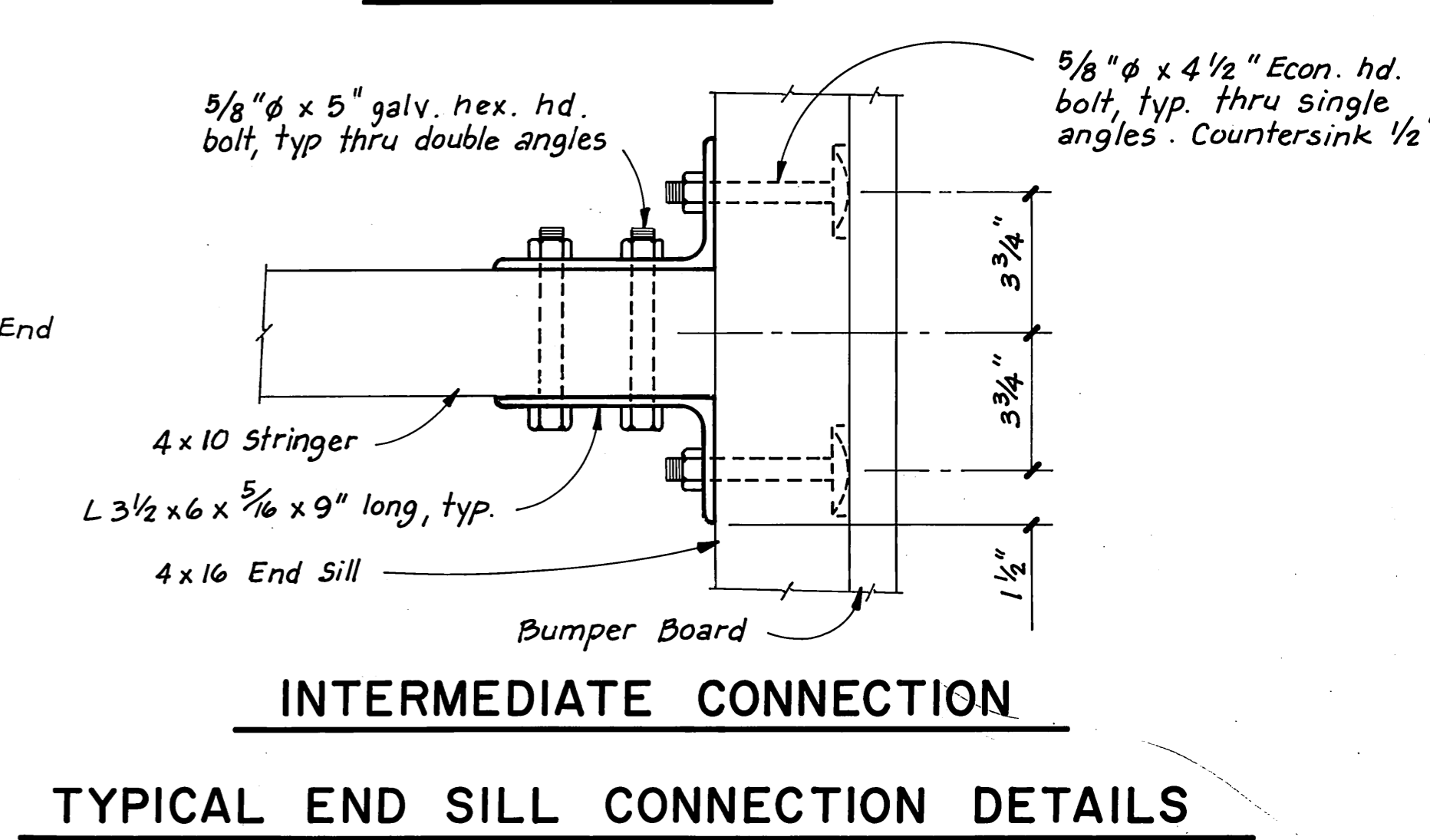
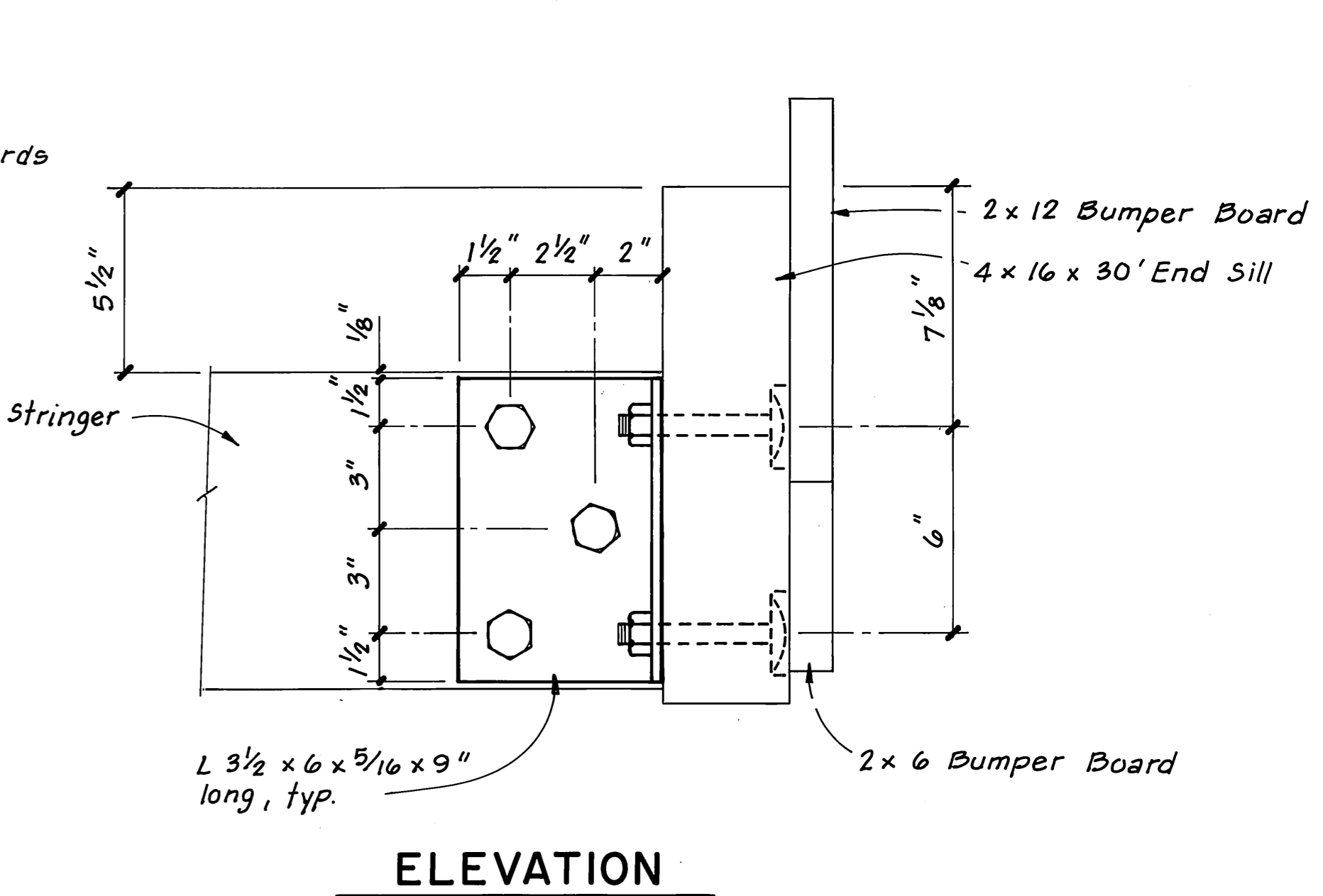
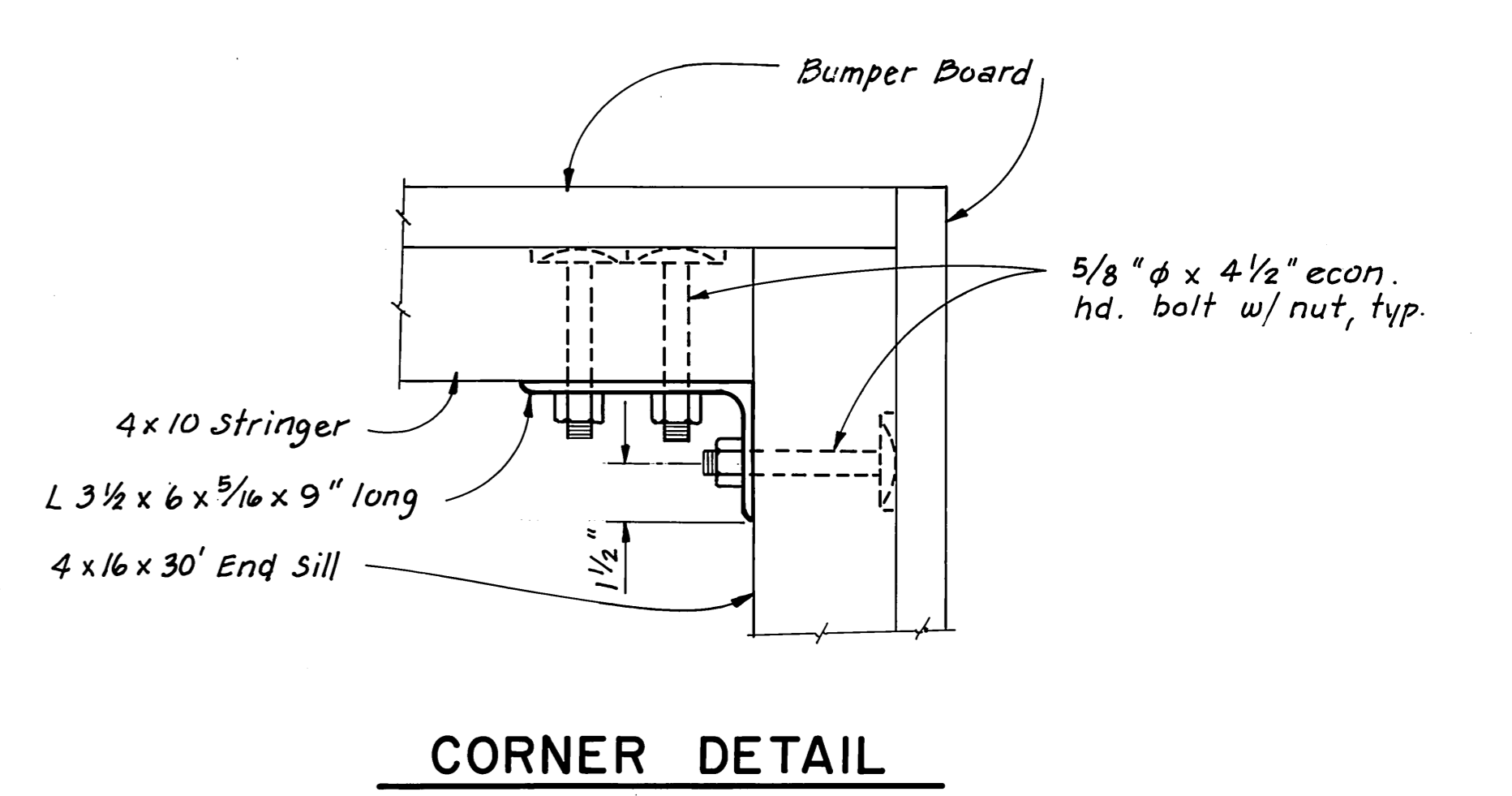
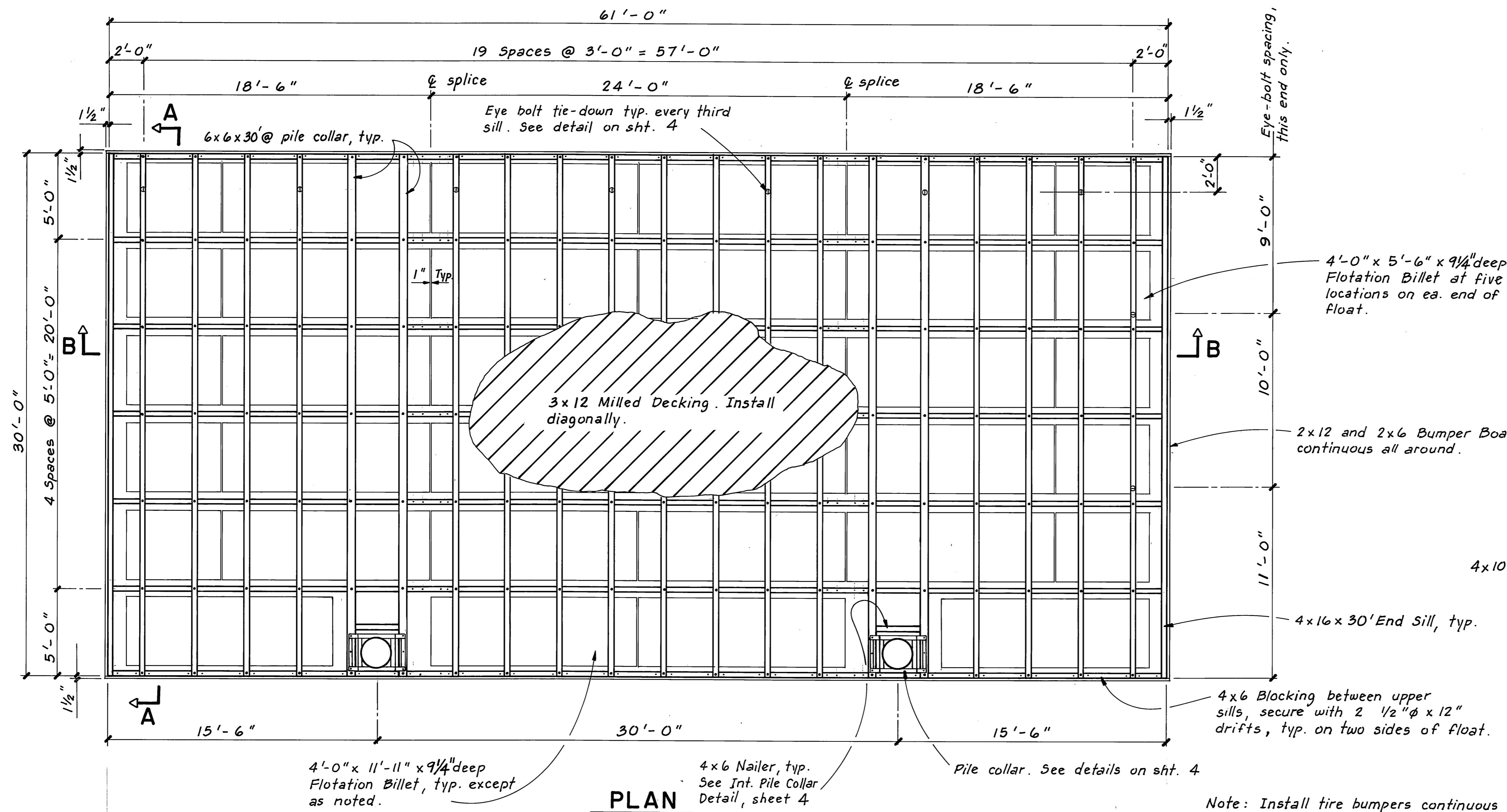
Kasgan Alaska

PROJECT LAYOUT

DESIGNED TS CHECKED JDB DRAWN TS DATE June 1989

PROJECT NUMBER 69968 SHEET 2 OF 5



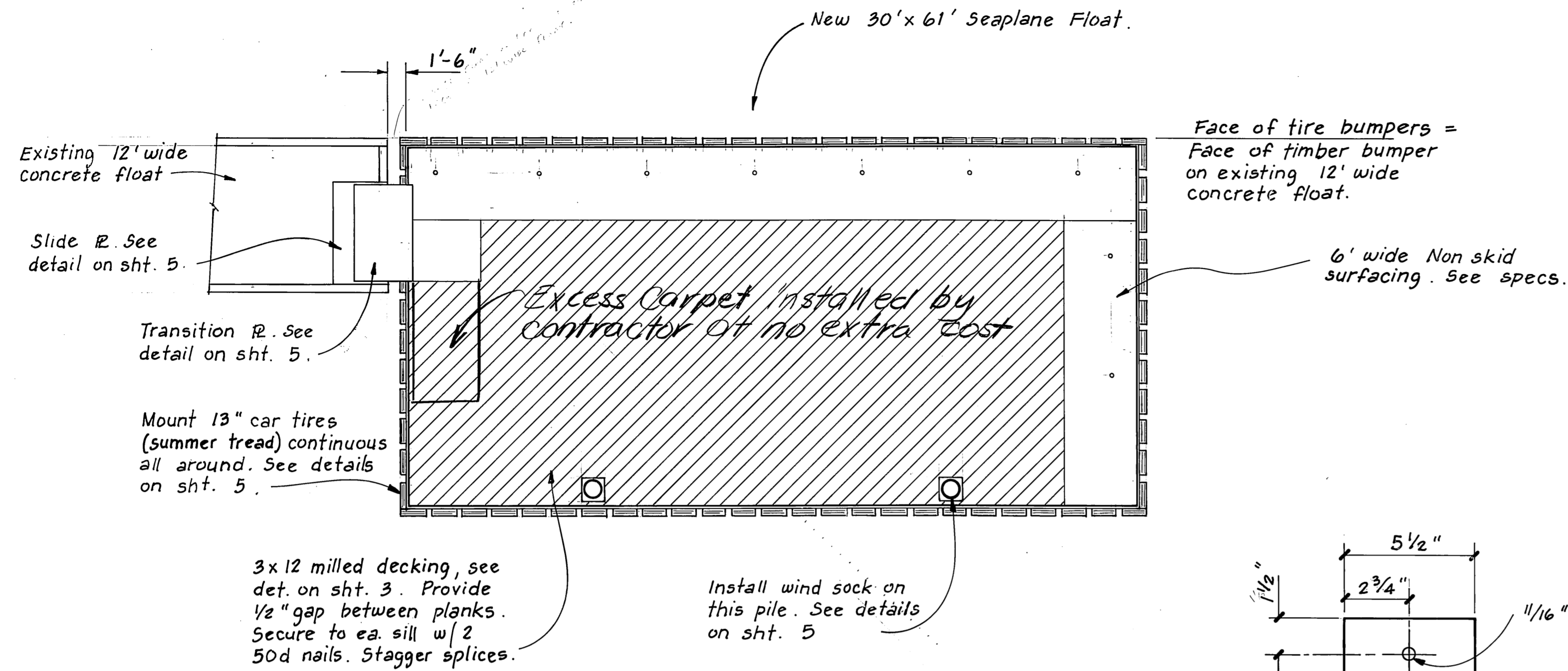


MILLED DECKING

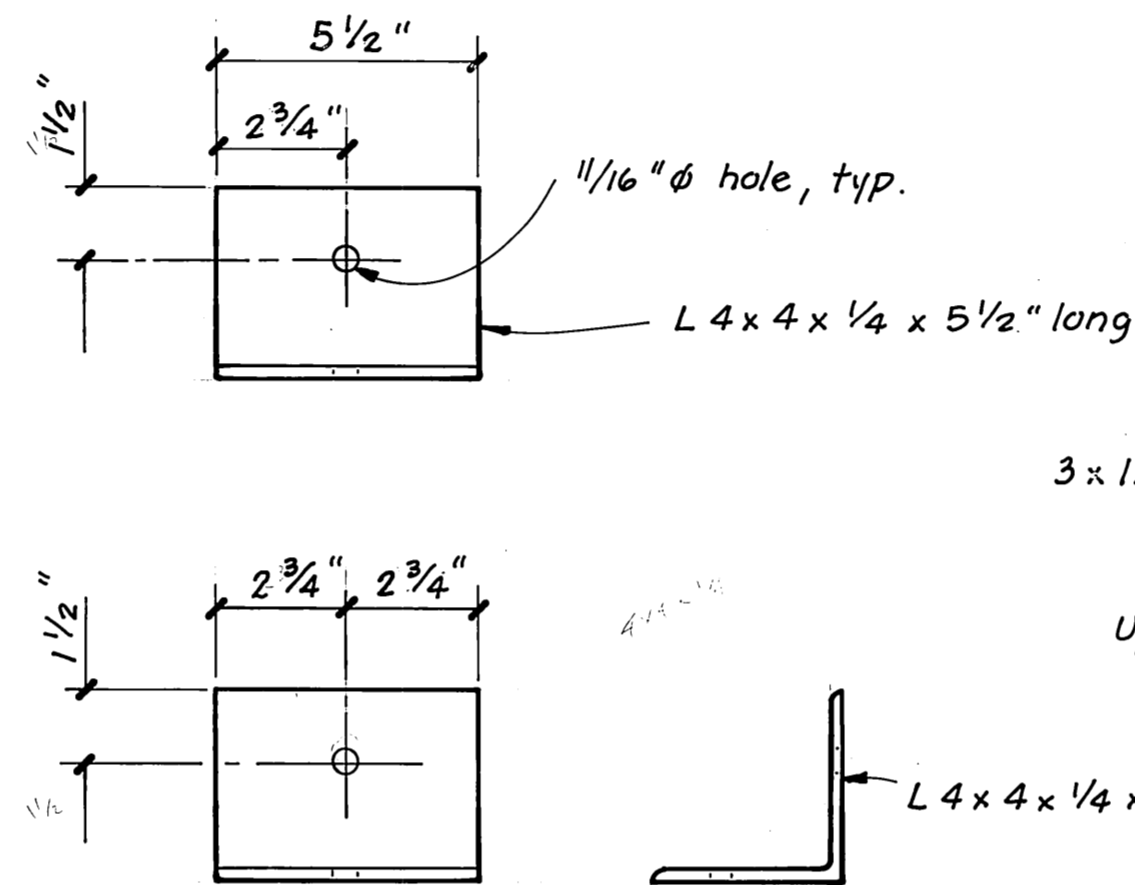
- DECKING NOTES:**
- 3x12 SIS2E Milled decking, space approximately 1/2" apart.
 - Secure w/ 2 50d hot dip galvanized nails at each sill.
 - Pre-drill all ends to prevent splitting.
 - Milled side shall be toward the inside of the tree.

Note:
Min. bumper length = 10'-0".
Secure bumpers with 20d galv. nails. Stagger nails @ 1'-0" o.c. and 2 nails @ ends.

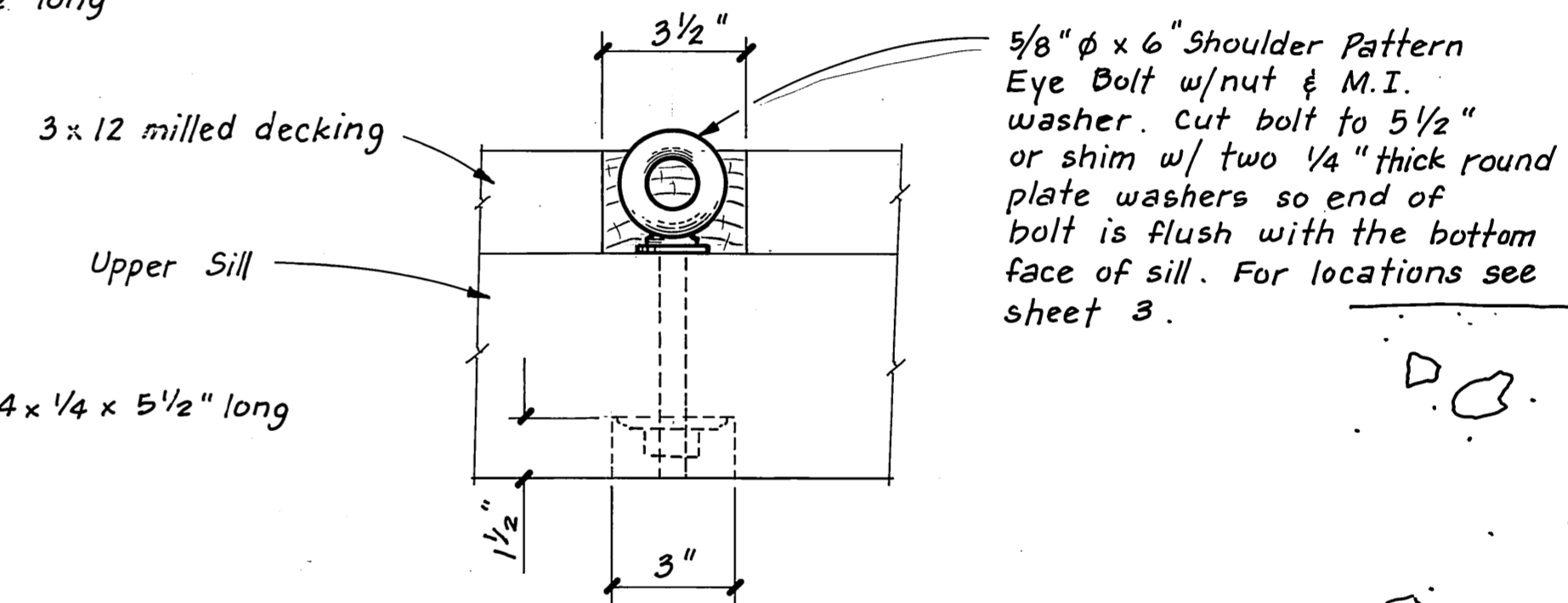
STAMP		DO NOT SCALE THIS DRAWING - USE DIMENSIONS	
STATE OF ALASKA DEPARTMENT OF TRANSPORTATION AND PUBLIC FACILITIES			
Kasaan		Alaska	
30' x 61' TIMBER SEAPLANE FLOAT			
DESIGNED <u>TS</u>	CHECKED <u>JDB</u>	DRAWN <u>TS</u>	DATE <u>June 1989</u>
PROJECT NUMBER <u>69968</u>		SHEET <u>3</u> OF <u>5</u>	



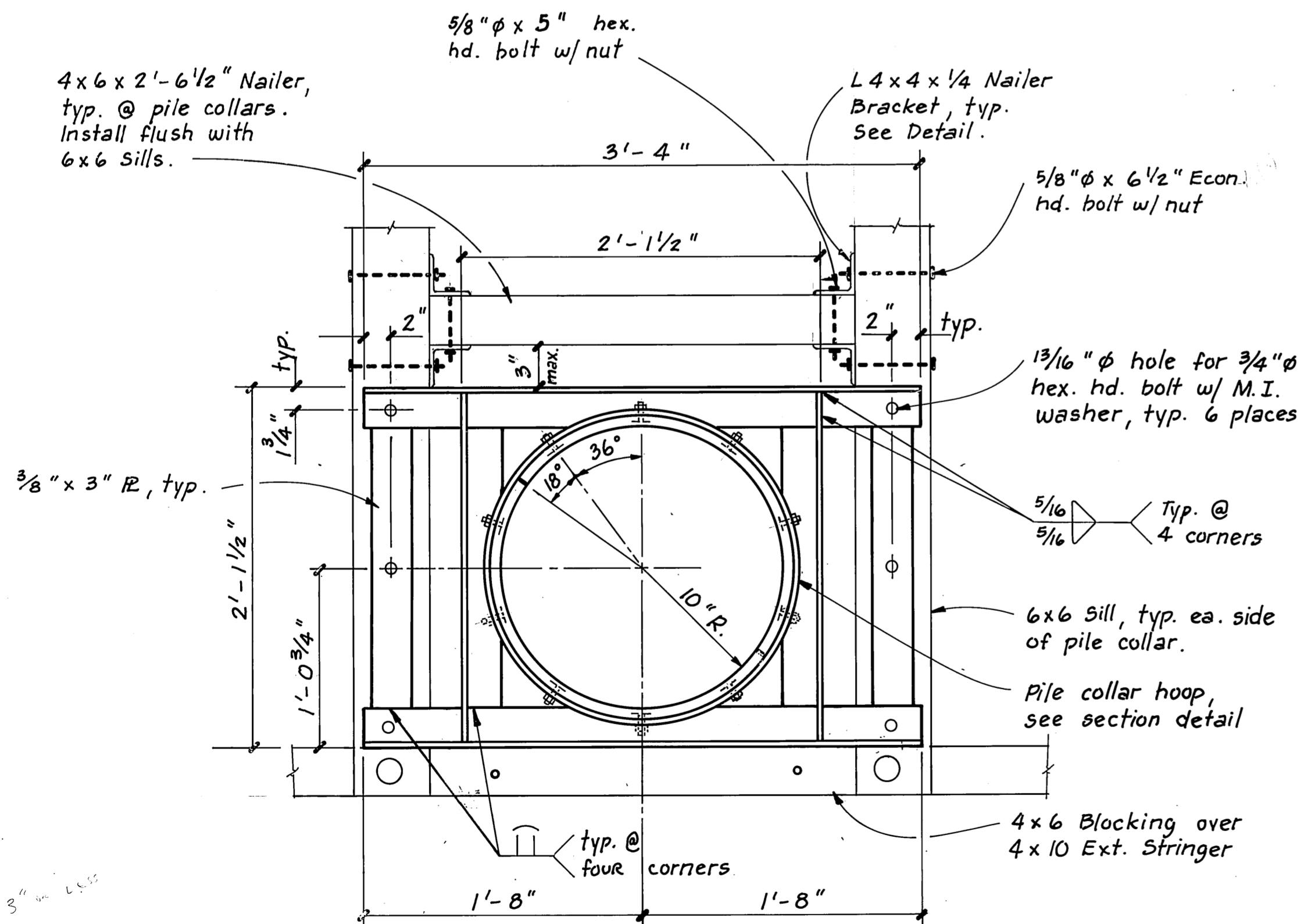
FLOAT ALIGNMENT DETAIL



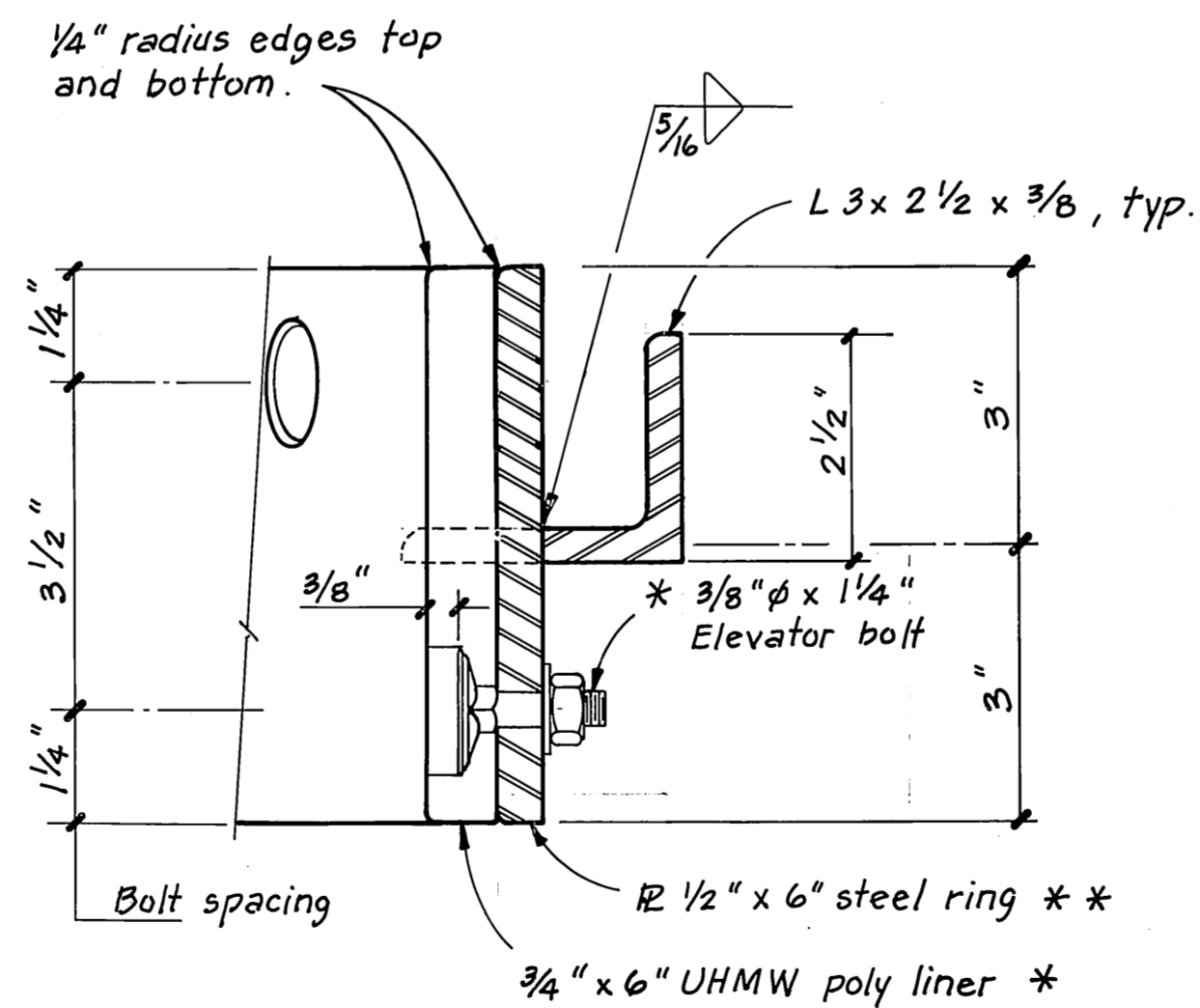
NAILER BRACKET



EYE BOLT TIE-DOWN DETAIL



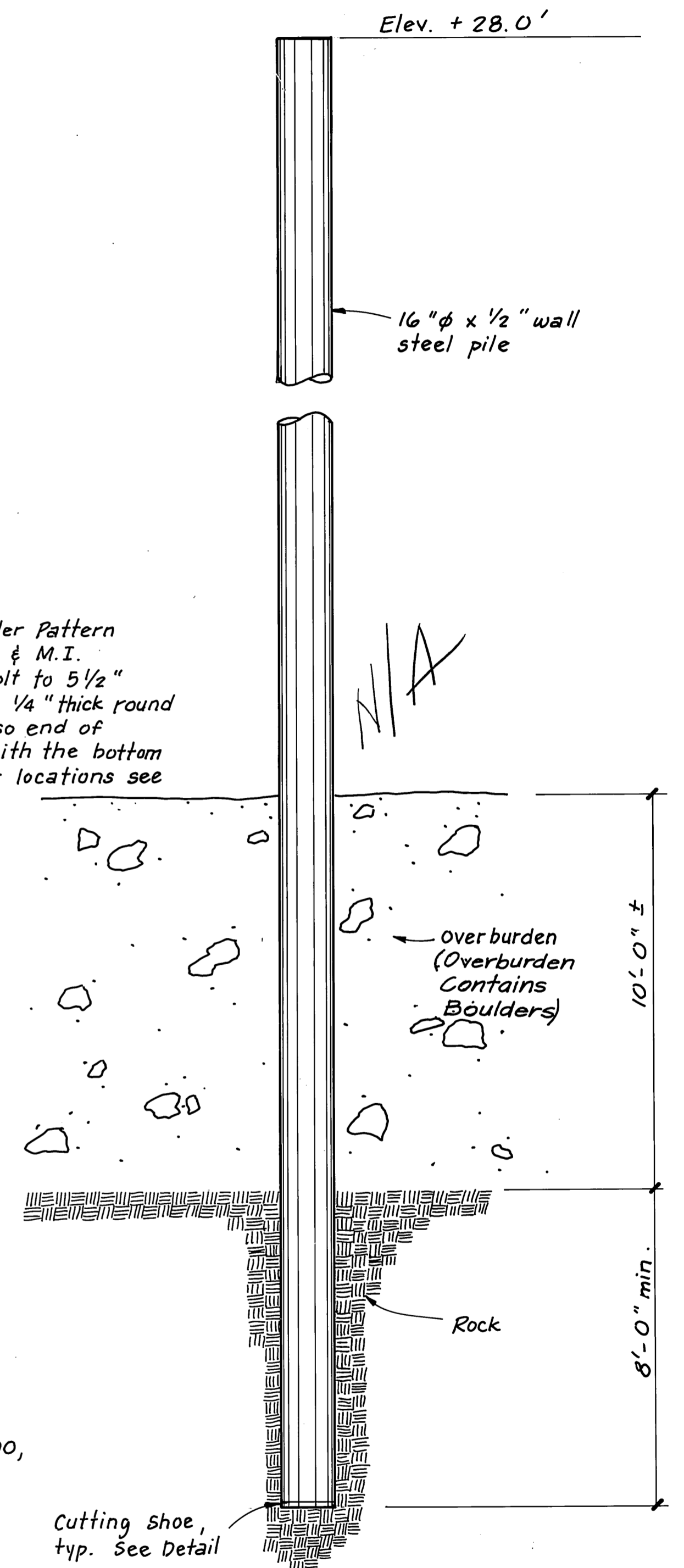
INTERIOR PILE COLLAR



SECTION THRU PILE COLLAR HOOP

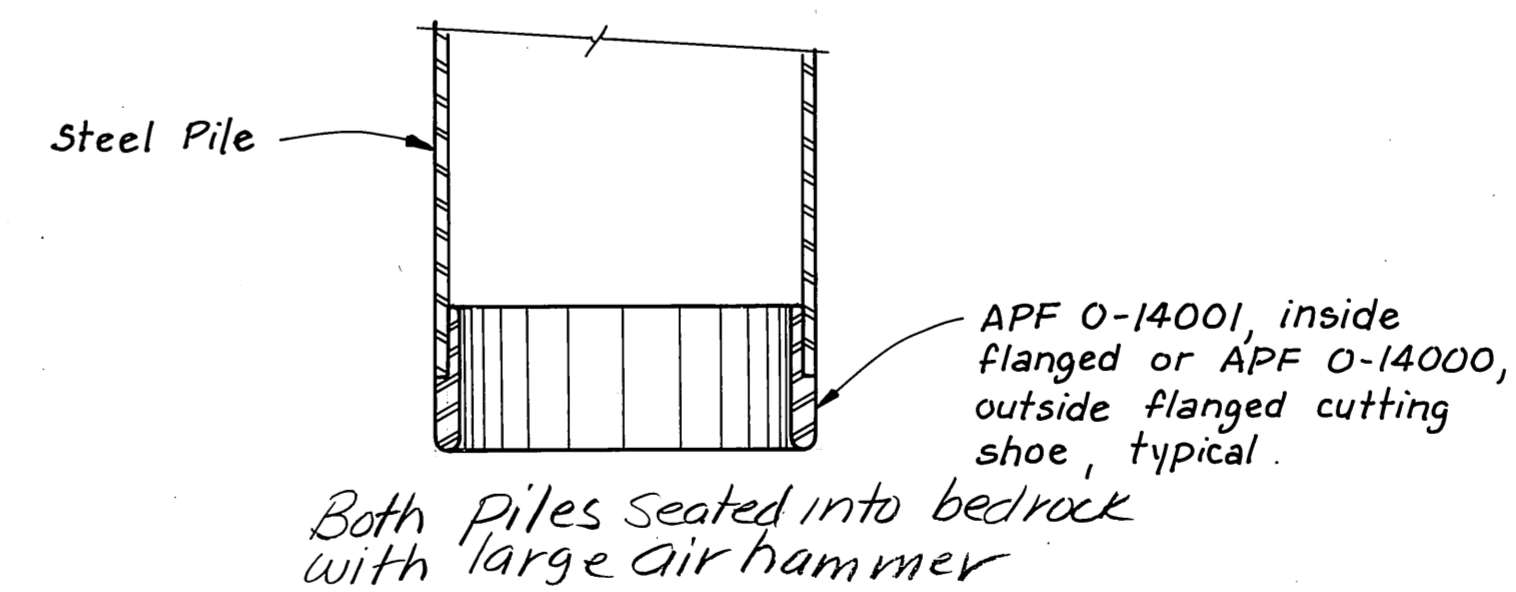
* Heat and then mold two half hoops. Countersink Elevator Bolts 3/8". Space 5 bolts per half collar alternately high & low. Space bolts evenly to allow for rotating the UHMW liner.

** All welds on the inside of the steel hoop shall be ground smooth.



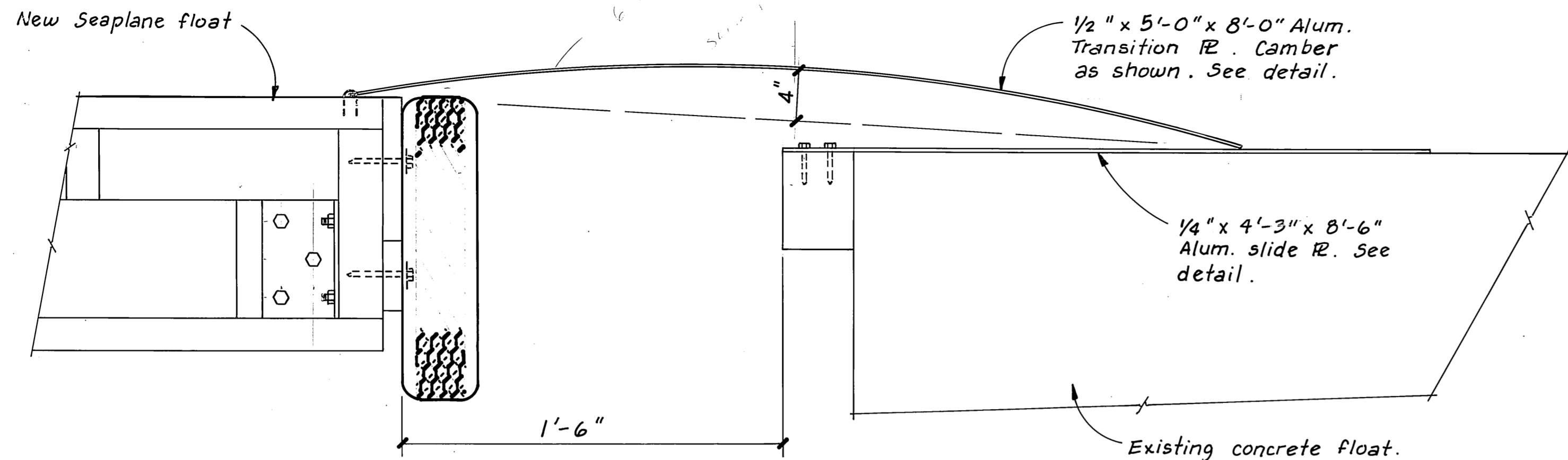
STEEL PILE SOCKET DETAIL

Deleted

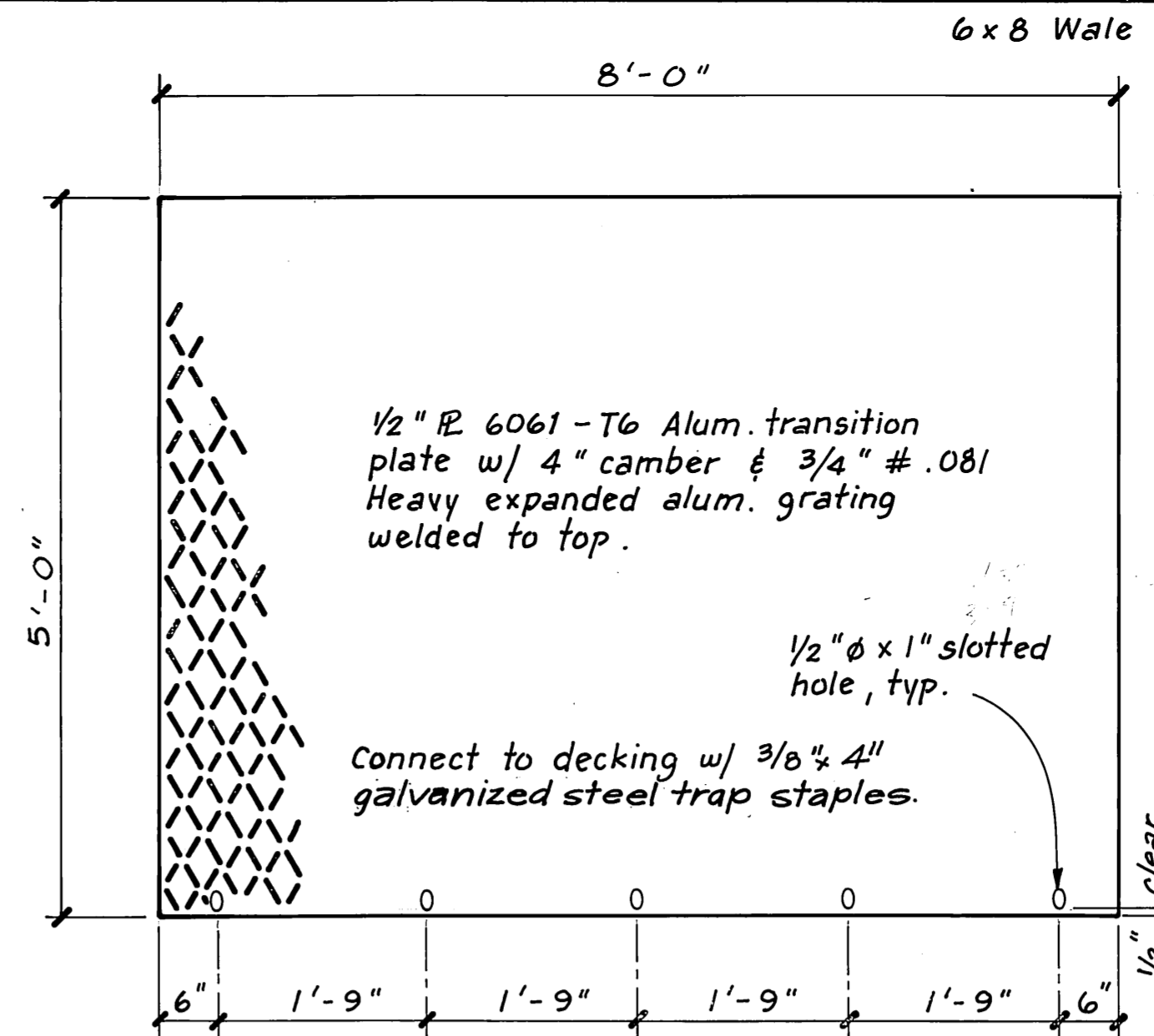


SECTION OF PILE AT CUTTING SHOE

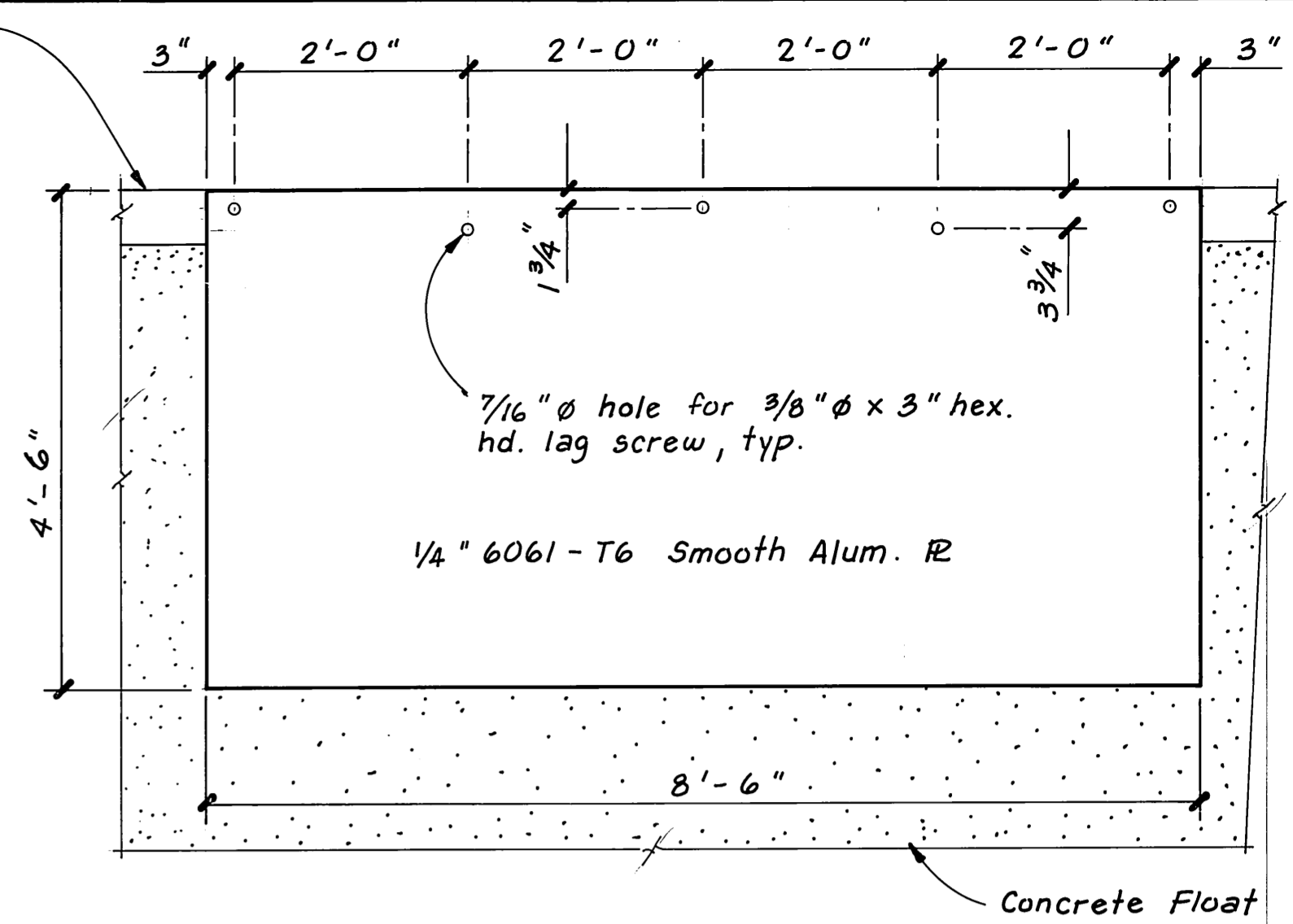
STAMP		DO NOT SCALE THIS DRAWING - USE DIMENSIONS	
		STATE OF ALASKA	
		DEPARTMENT OF TRANSPORTATION AND PUBLIC FACILITIES	
PROJECT NUMBER 69960		Alaska	
MISC. DETAILS			
DESIGNED TS	CHECKED JDB	DRAWN TS	DATE June 1989
PROJECT NUMBER 69960		SHEET 4 OF 5	



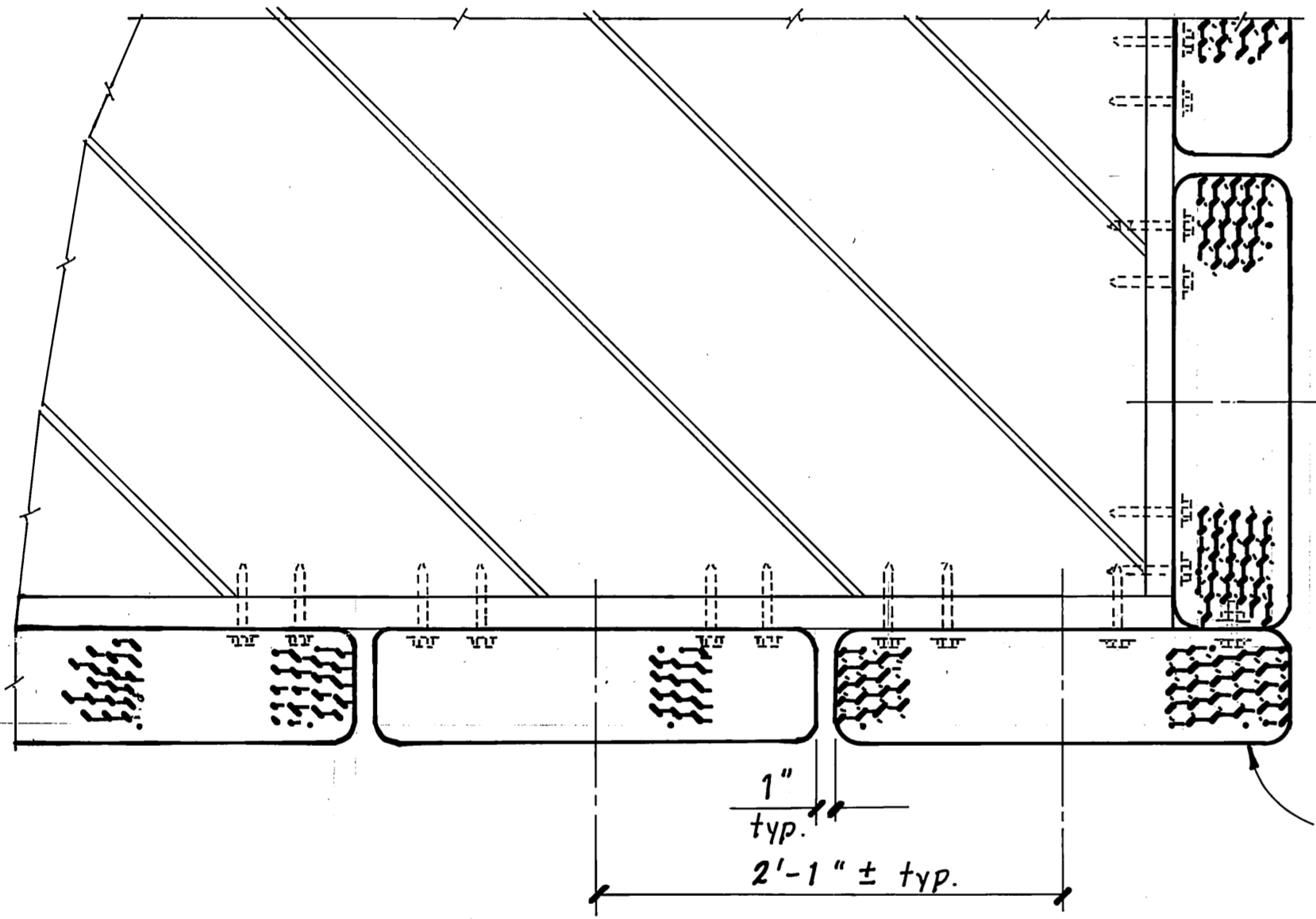
TRANSITION BETWEEN FLOATS



TRANSITION PLATE



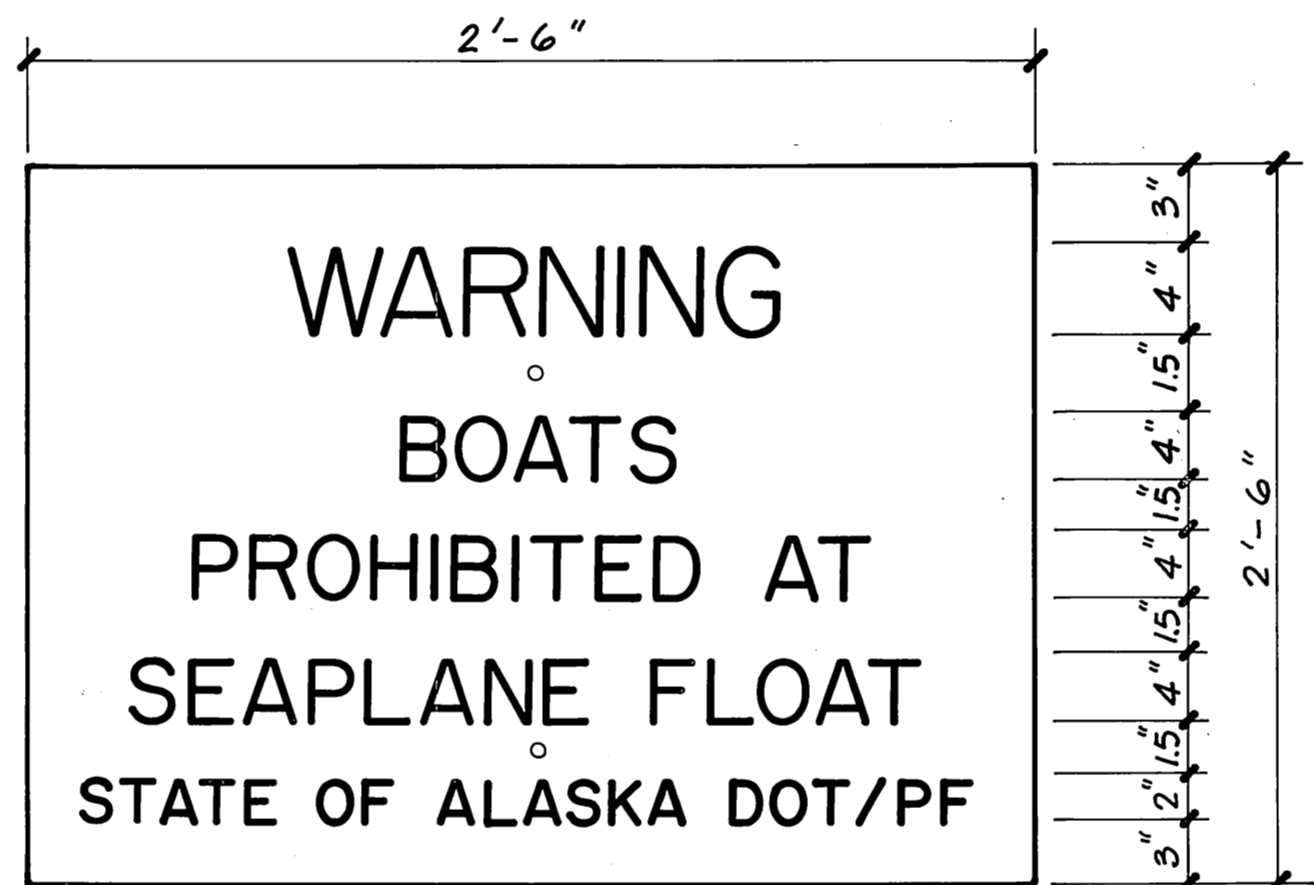
SLIDE PLATE



PLAN

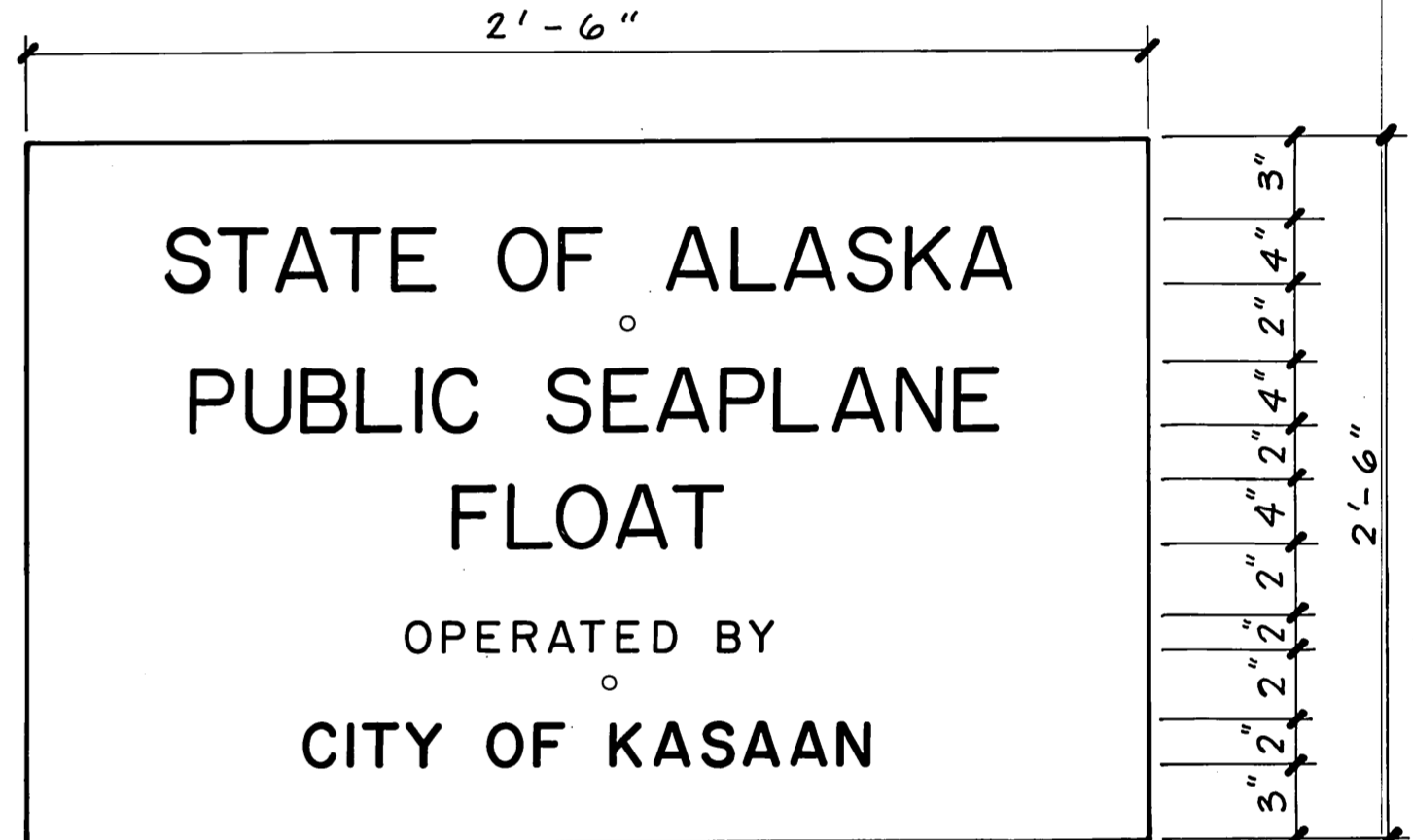
Note:
Non-skid Surfacing
not shown.

Corner bumpers,
See Elev. for attachment
locations.



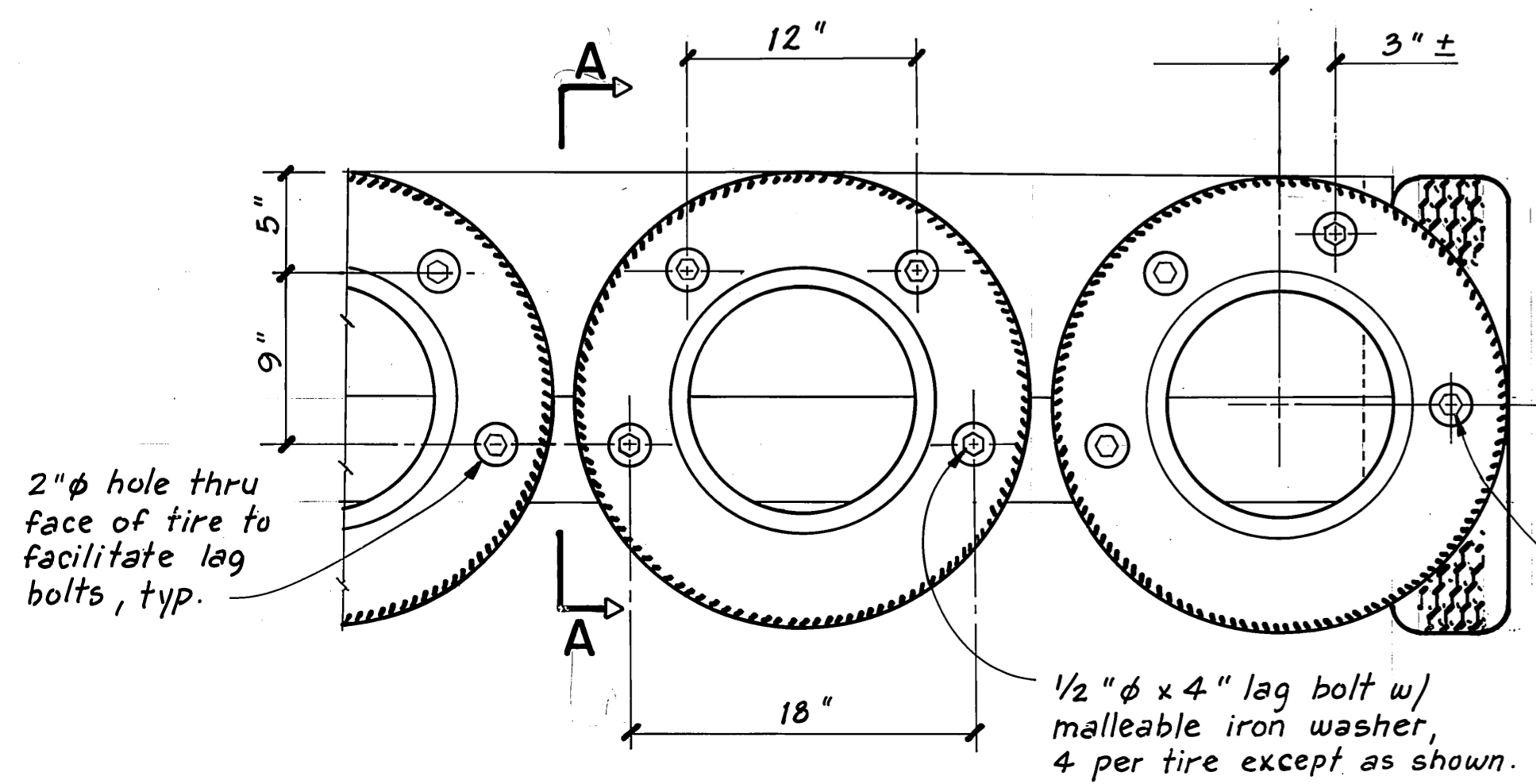
PLAN

Standard slip on
Wind Cone ring
assembly

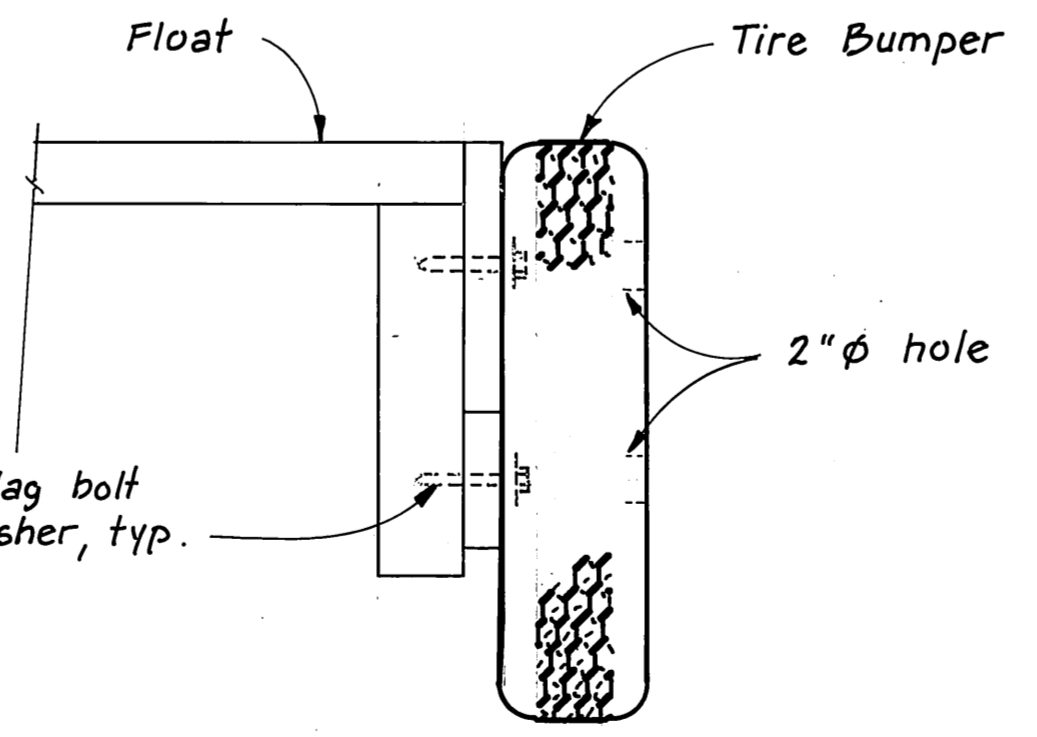


Note: Secure signs near the top of seaplane float piles by drilling and tapping the piles for 1/2\"/>

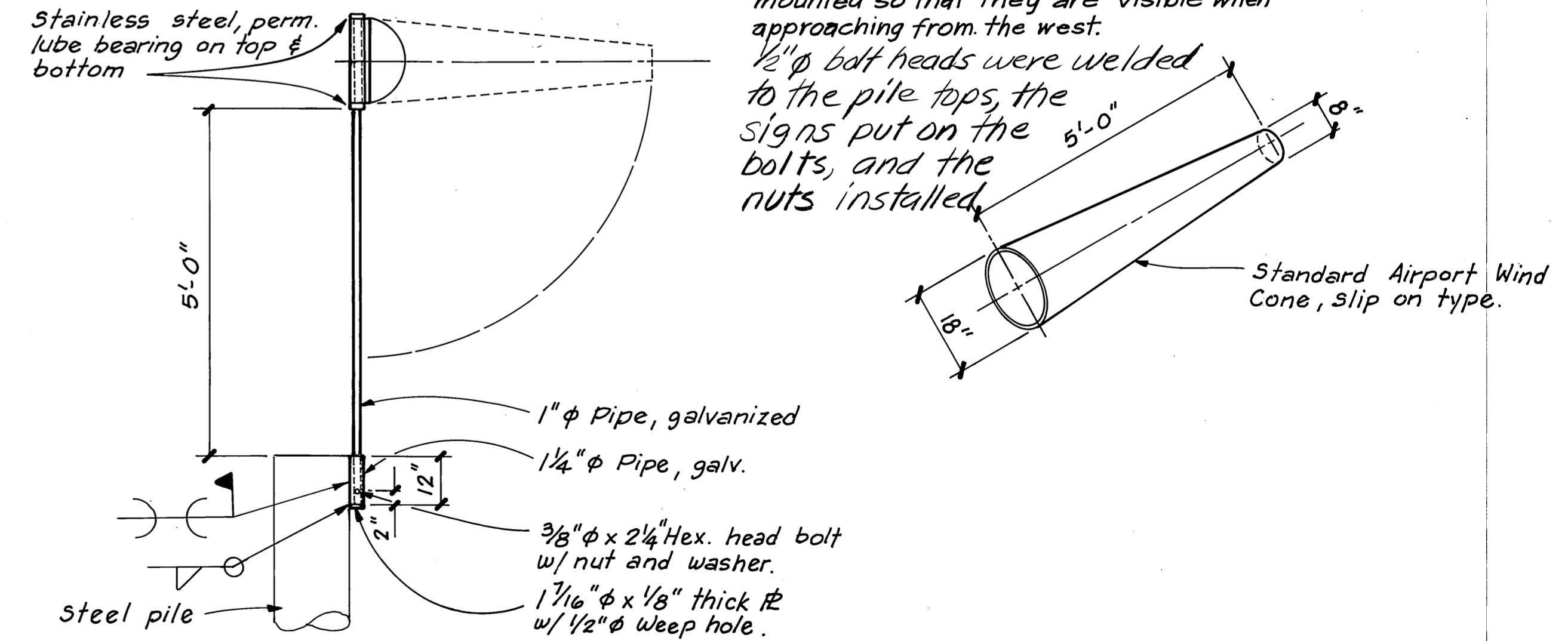
- NOTES:**
- Tires shall be 13" with a min. 1/8" deep summer tread.
 - All of the tires shall be of the same width with a maximum allowable variation of 1/2".



ELEVATION TIRE BUMPER DETAILS



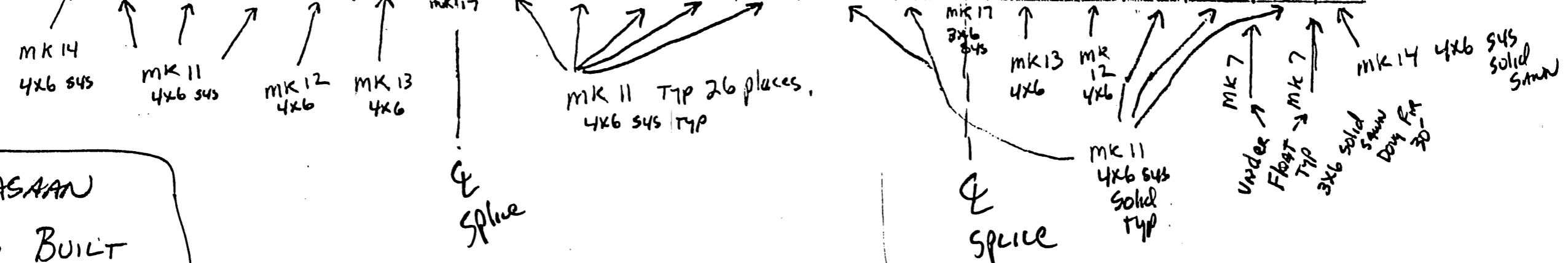
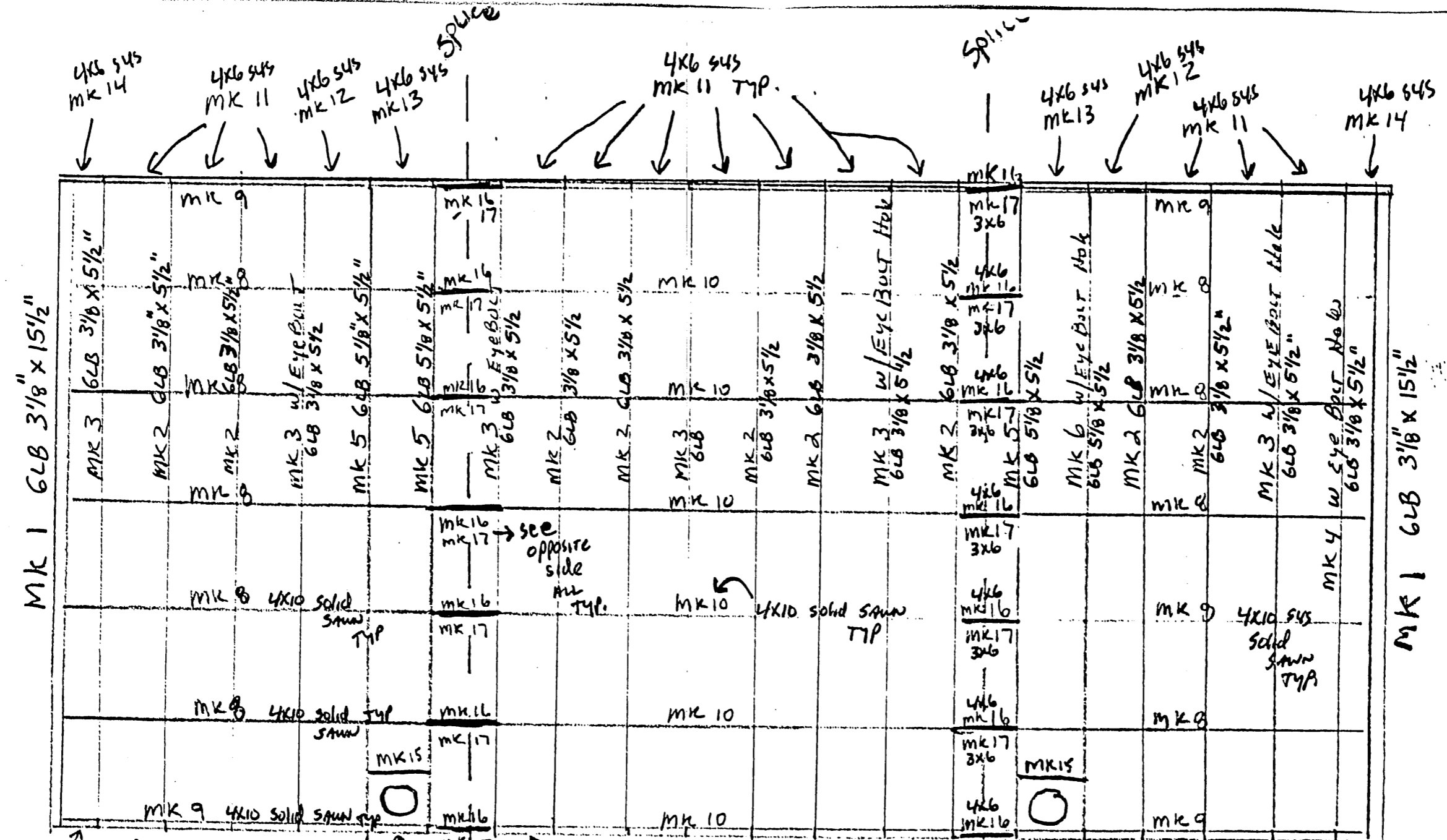
SECTION A-A



ELEVATION SLIP-ON WIND CONE

STAMP		DO NOT SCALE THIS DRAWING - USE DIMENSIONS	
		STATE OF ALASKA	
		DEPARTMENT OF TRANSPORTATION AND PUBLIC FACILITIES	
Kasaan		Alaska	
MISC. DETAILS			
DESIGNED <u>TS</u>	CHECKED <u>JDB</u>	DRAWN <u>TS</u>	DATE <u>June 1989</u>
PROJECT NUMBER <u>69968</u>		SHEET <u>5</u> OF <u>5</u>	

MATHEUS LUMBER COMPANY, INC.



KASAAN AS BUILT

KASAAN LAYOUT Per MK #'S

FABRY CONST.

7-15-90 Forward to MARK HALVORSON @ STATE DOT/PR per request

#69968
KASAAN Seaplane Float