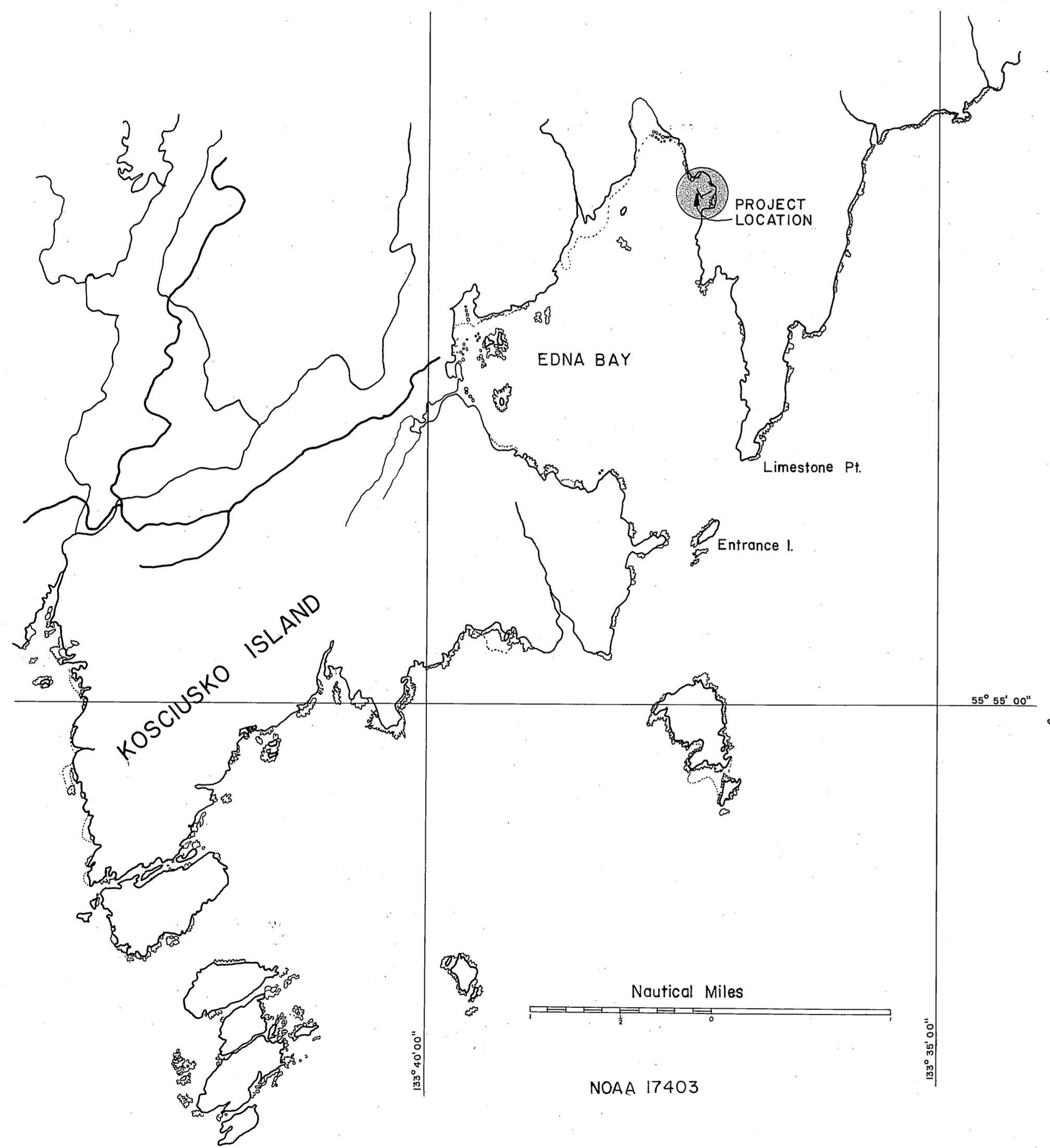


EDNA BAY DOCK FACILITY

STAGE II

PROJECT NO. 68857 (K31042)



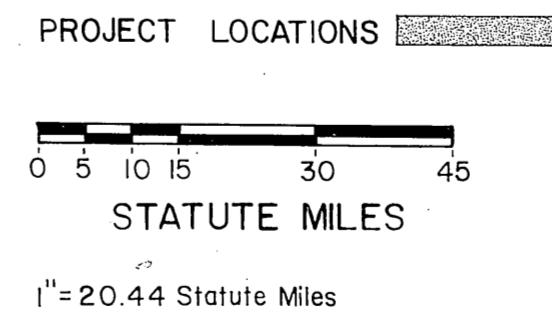
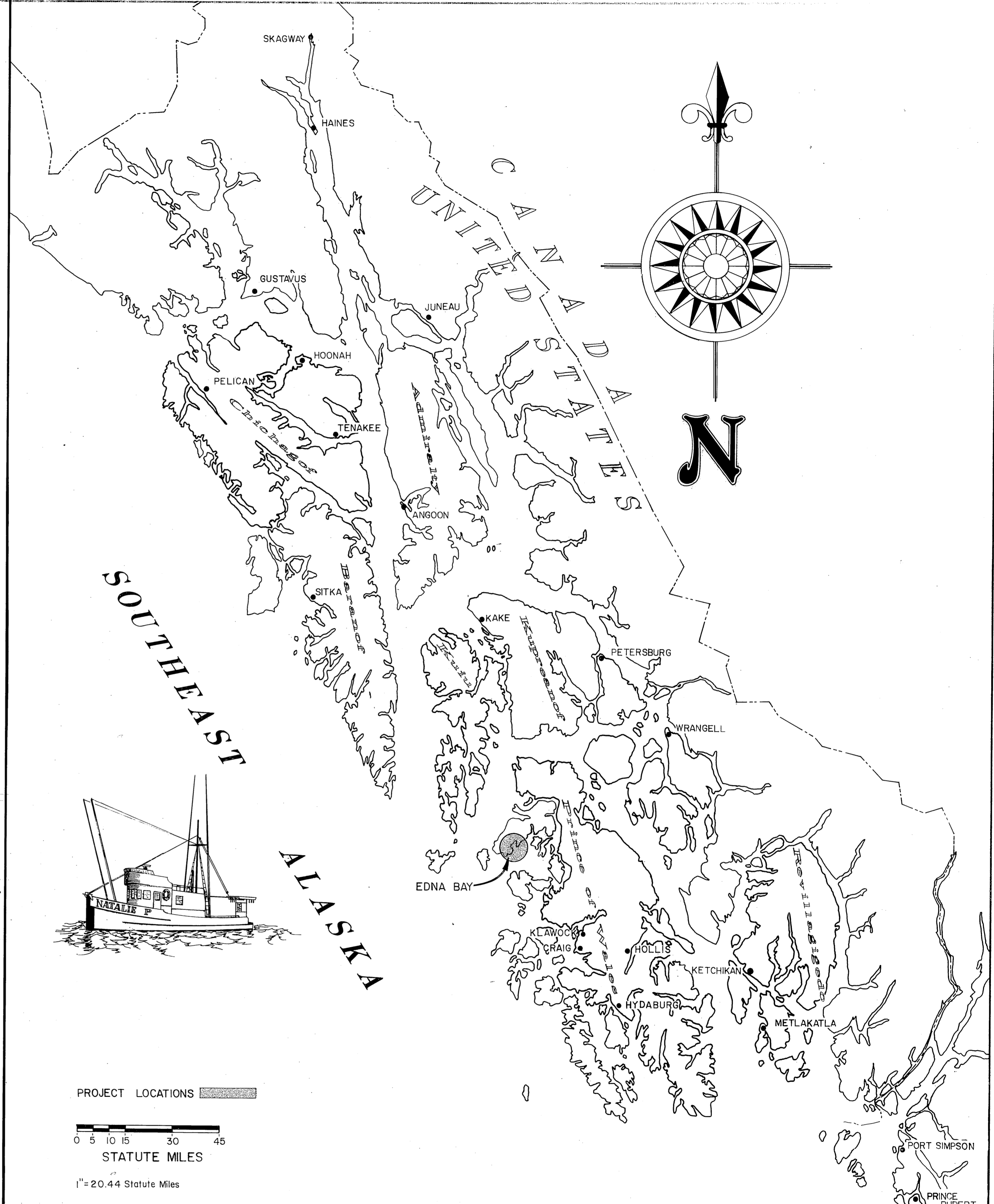
WORK SUMMARY

This work consists of furnishing and installing a 12' x 137.5' log reinforced float with 6 piles. An additional 12' x 12.5' section of log reinforced float shall be bid as a supplemental item.

AS BUILT

Start: June 2, 1986
 Stop: June 27, 1986
 Contractor: Bradley Construction Co.
 Inspector: Mark Halvorsen
 Date: July 28, 1986

Mark Halvorsen
7/28/86



**STATE
OF
ALASKA**

DEPARTMENT OF TRANSPORTATION
& PUBLIC FACILITIES
S.E. REGION DESIGN & CONSTRUCTION

APPROVED

W. Dickmeyer 11-21-85
Director S.E. D&C. Date

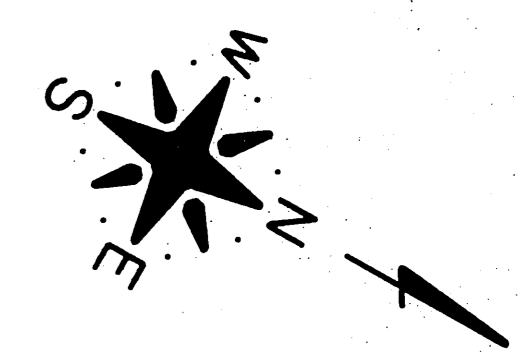
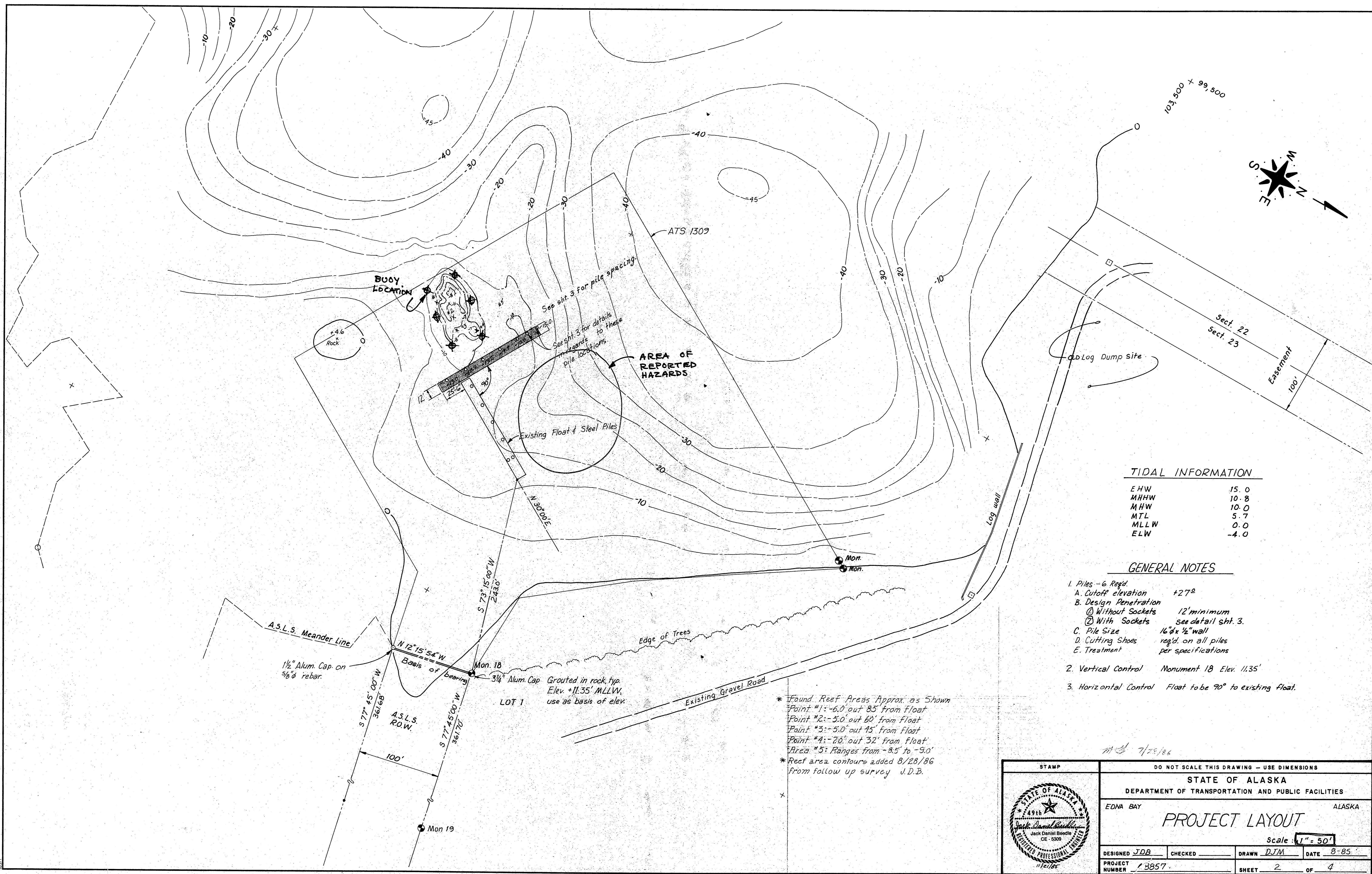
Recommend
for Approval
Steven O. Bradley 11-21-85
Group Design Chief Date

SHEET 1 of 4

INDEX TO SHEETS

1. Title & Location				
2. Project Layout				
3. Sill, Stringer & Log Layout & Pile Socket Detail				
4. 12' Log Reinforced Float				

**PROJECT &
FILE NO.**



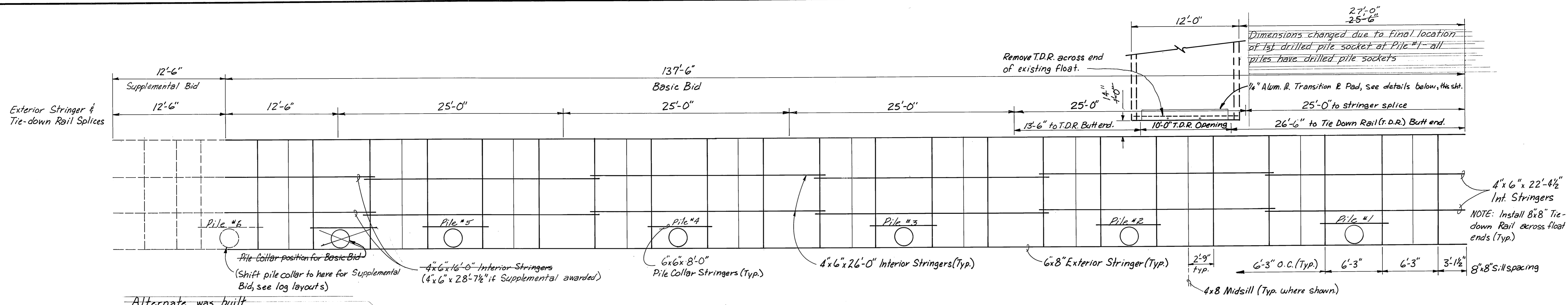
TIDAL INFORMATION

EHW	15.0
MHHW	10.8
MHW	10.0
MTL	5.7
MLLW	0.0
ELW	-4.0

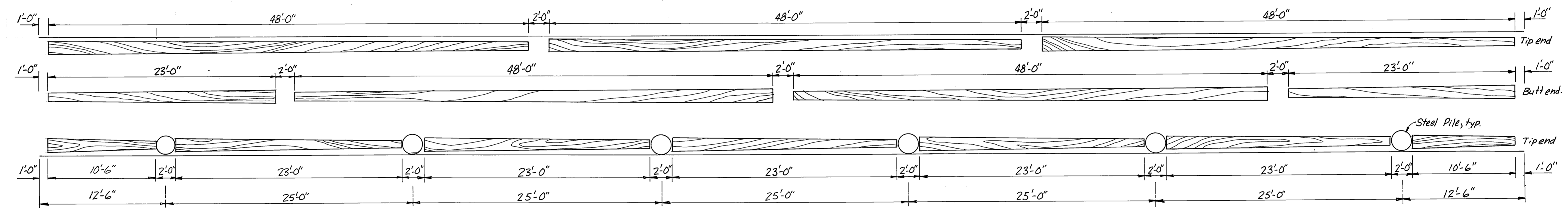
- GENERAL NOTES**
- Piles - 6 Reg'd.
 - A. Cutoff elevation +27[±]
 - B. Design Penetration
 - ⊙ Without Sockets 12' minimum
 - ⊙ With Sockets see detail sht. 3.
 - C. Pile Size 16" ⌀ x 1/2" wall
 - D. Cutting Shoes reg'd. on all piles
 - E. Treatment per specifications
 - Vertical Control Monument 18 Elev. 11.35'
 - Horizontal Control Float to be 90° to existing float.

* Found Reef Areas Approx. as Shown
 Point #1: -6.0' out 85' from float
 Point #2: -5.0' out 60' from float
 Point #3: -5.0' out 45' from float
 Point #4: -2.0' out 32' from float
 Area #5: Ranges from -8.5' to -9.0'
 * Reef area contours added 8/28/86 from follow up survey J.D.B.

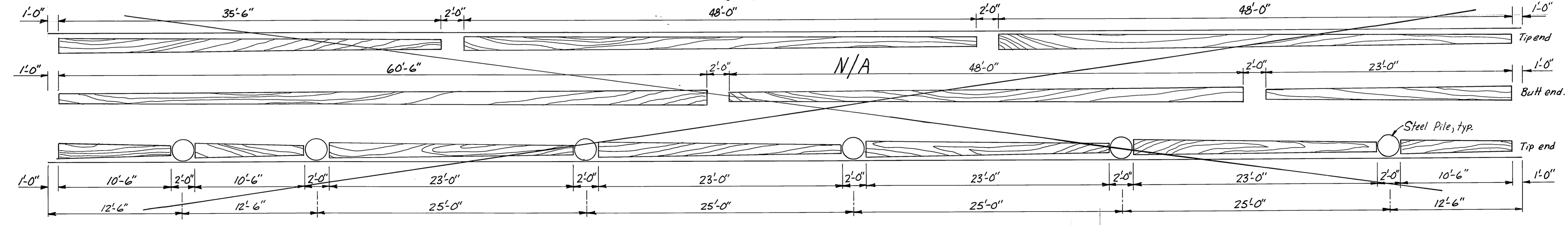
	DO NOT SCALE THIS DRAWING - USE DIMENSIONS			
	STATE OF ALASKA			
	DEPARTMENT OF TRANSPORTATION AND PUBLIC FACILITIES			
	EDNA BAY		ALASKA	
PROJECT LAYOUT				
Scale: 1" = 50'				
DESIGNED <u>JDB</u>	CHECKED _____	DRAWN <u>DJM</u>	DATE <u>8-85</u>	
PROJECT NUMBER <u>13857</u>	SHEET <u>2</u> OF <u>4</u>			



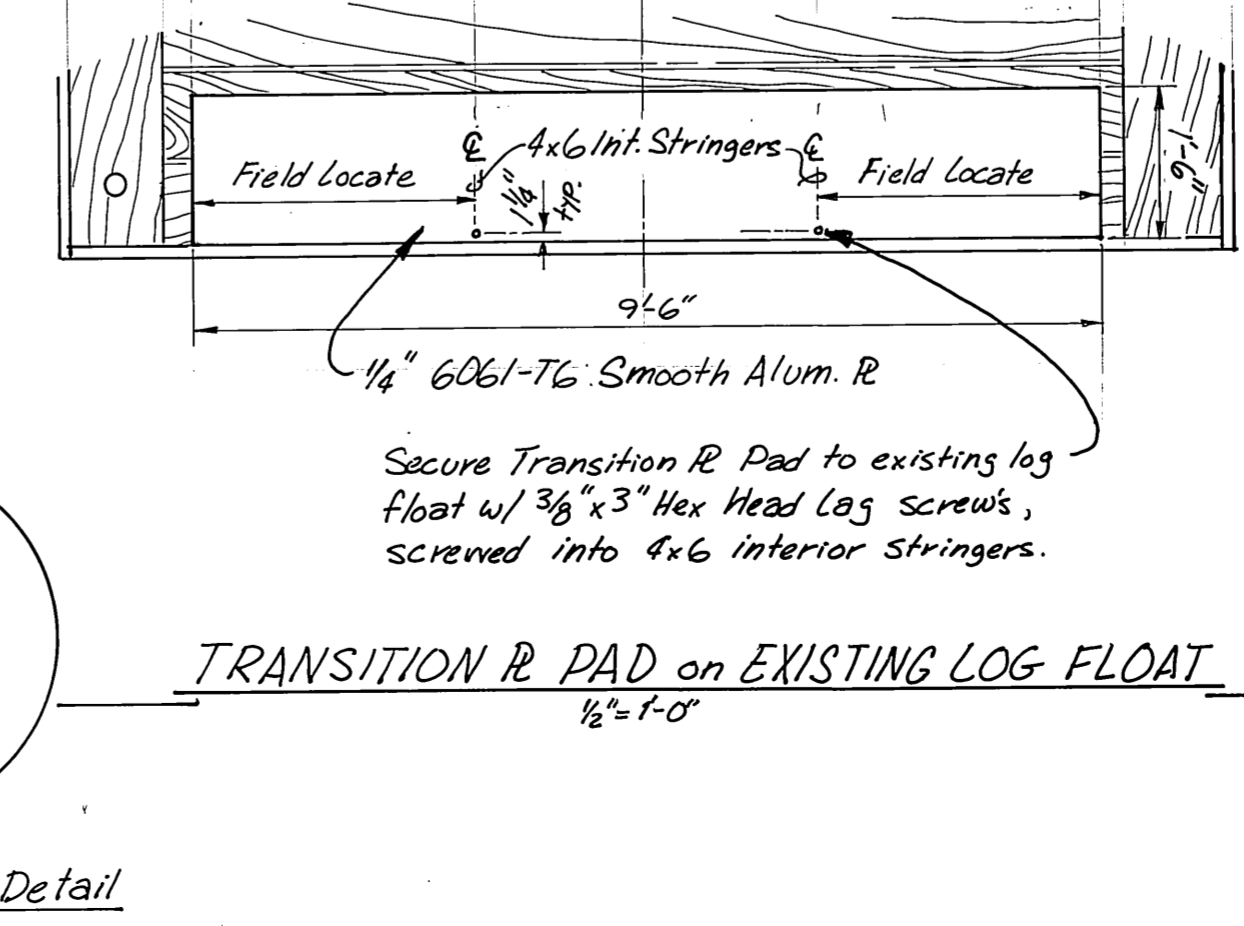
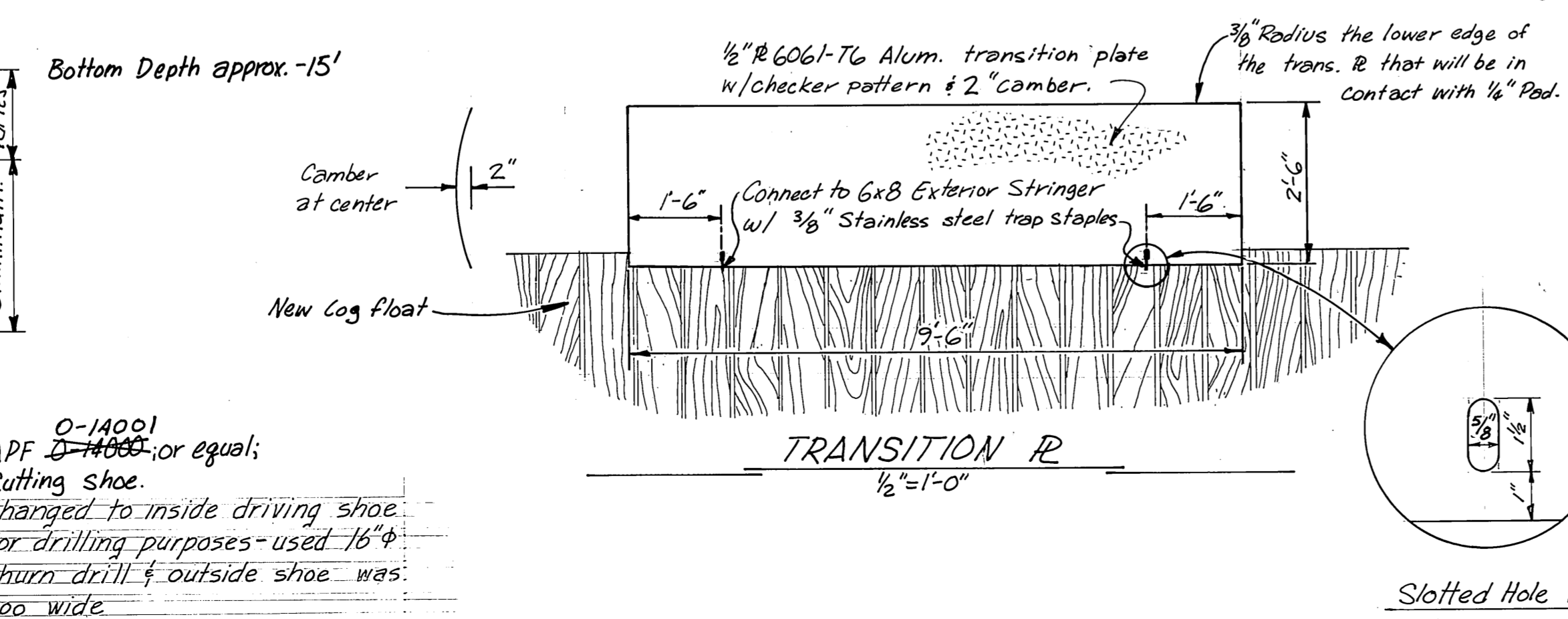
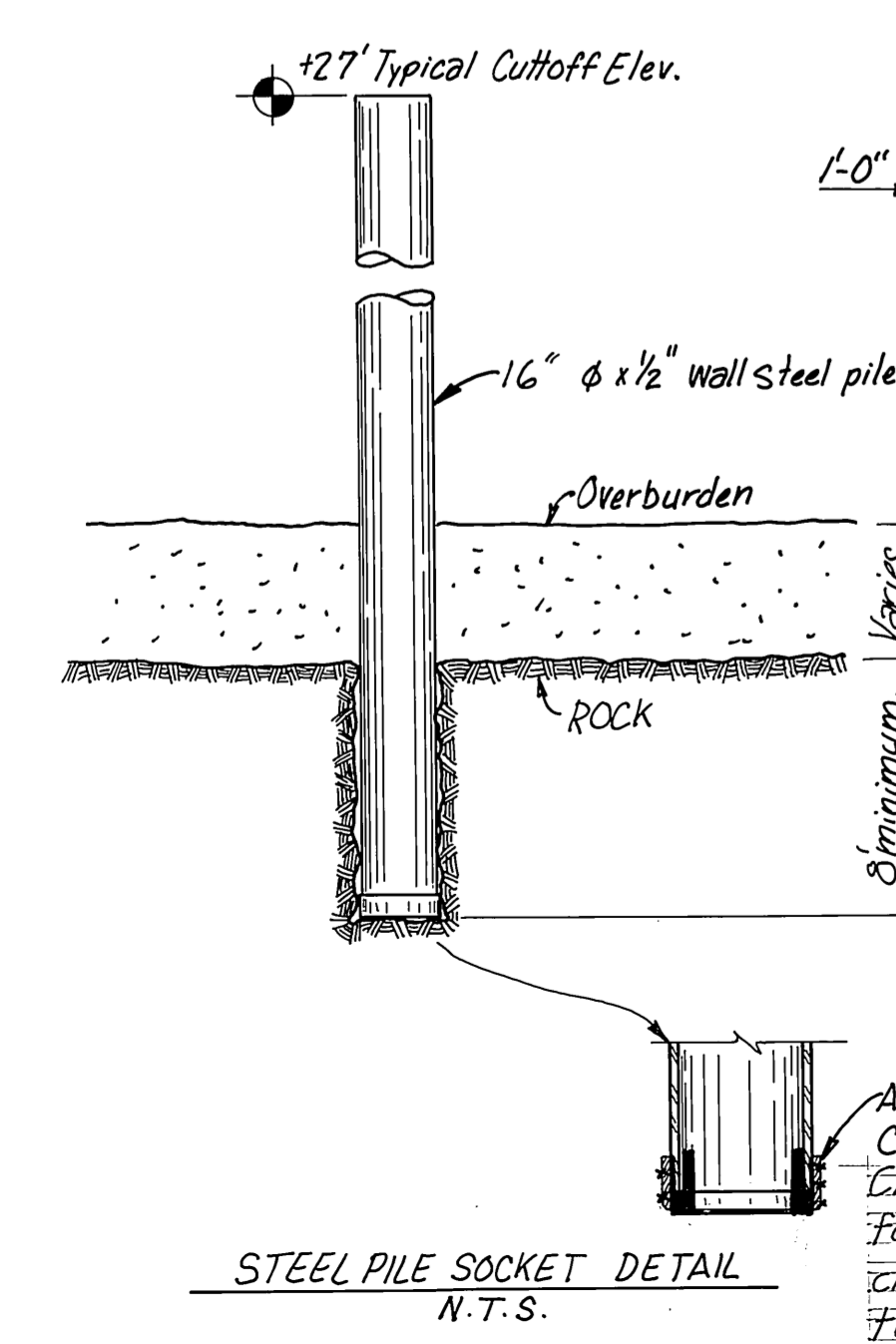
SILL & STRINGER LAYOUT
3/16" = 1'-0"



SUPPLEMENTAL BID LOG LAYOUT
3/16" = 1'-0"



BASIC BID LOG LAYOUT
3/16" = 1'-0"



NOTE: Float Logs Shall Have a Min. Tip Circumference of 31 1/2" (10" Dia.) & a Max. Butt Circumference of 50" (16" Dia.)

7/29/86

STAMP		DO NOT SCALE THIS DRAWING - USE DIMENSIONS			
		STATE OF ALASKA			
		DEPARTMENT OF TRANSPORTATION AND PUBLIC FACILITIES			
Edna Bay		Alaska			
SILL, STRINGER & LOG LAYOUT & PILE SOCKET DETAIL					
DESIGNED JDB	CHECKED	DRAWN DJM	DATE	8-85	
PROJECT NUMBER 68857	SHEET 3		OF 4		

