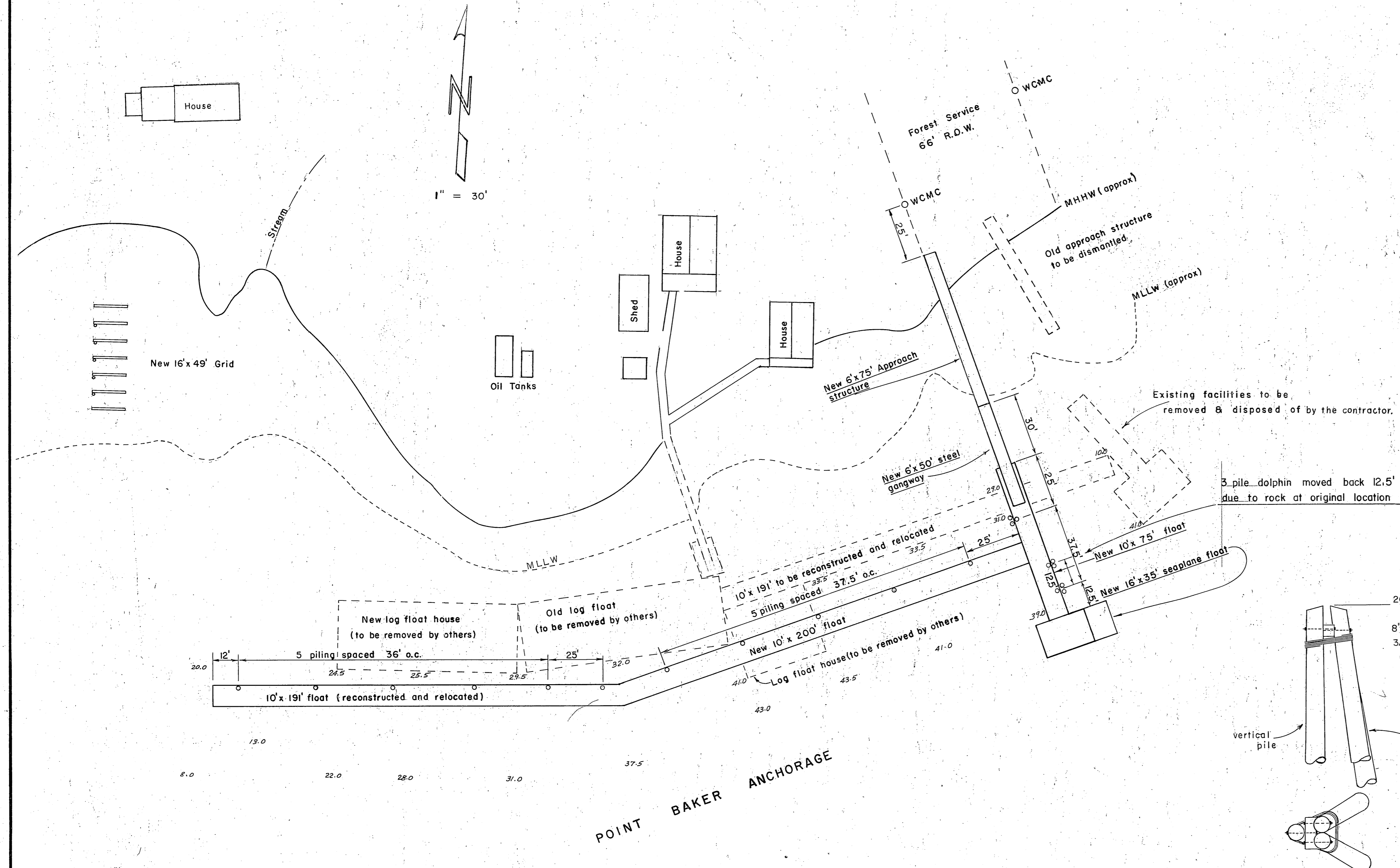
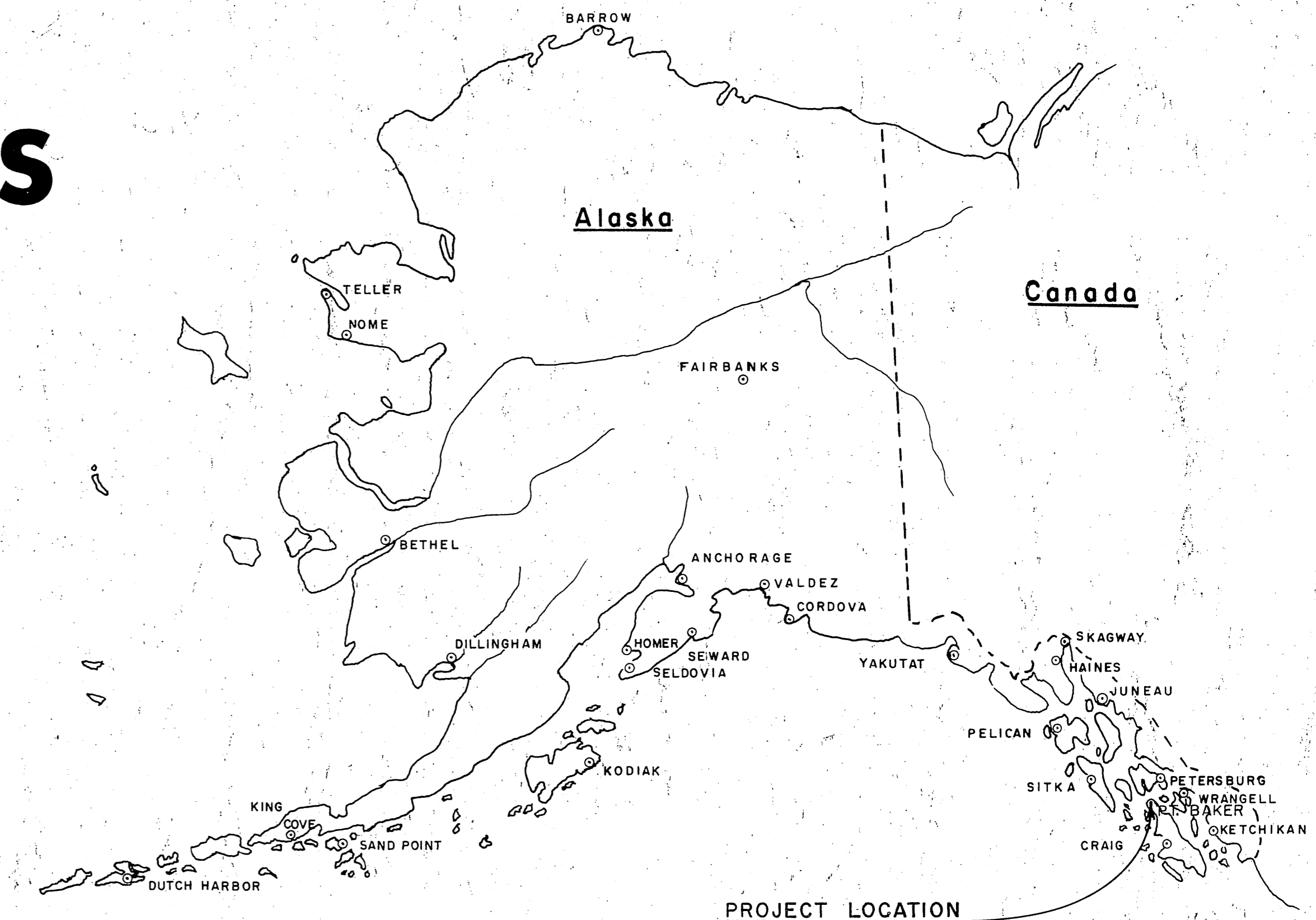


STATE OF ALASKA
DEPARTMENT OF PUBLIC WORKS
DIVISION OF WATER & HARBORS

PT. BAKER FLOAT FACILITIES
PROJECT NO. 3-68121

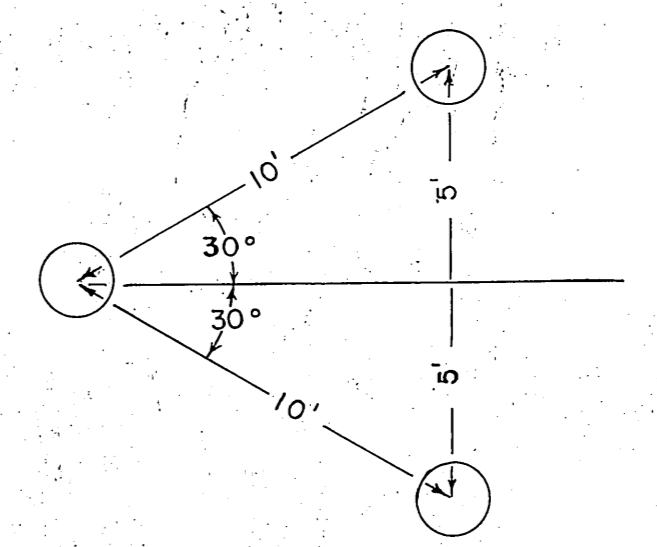
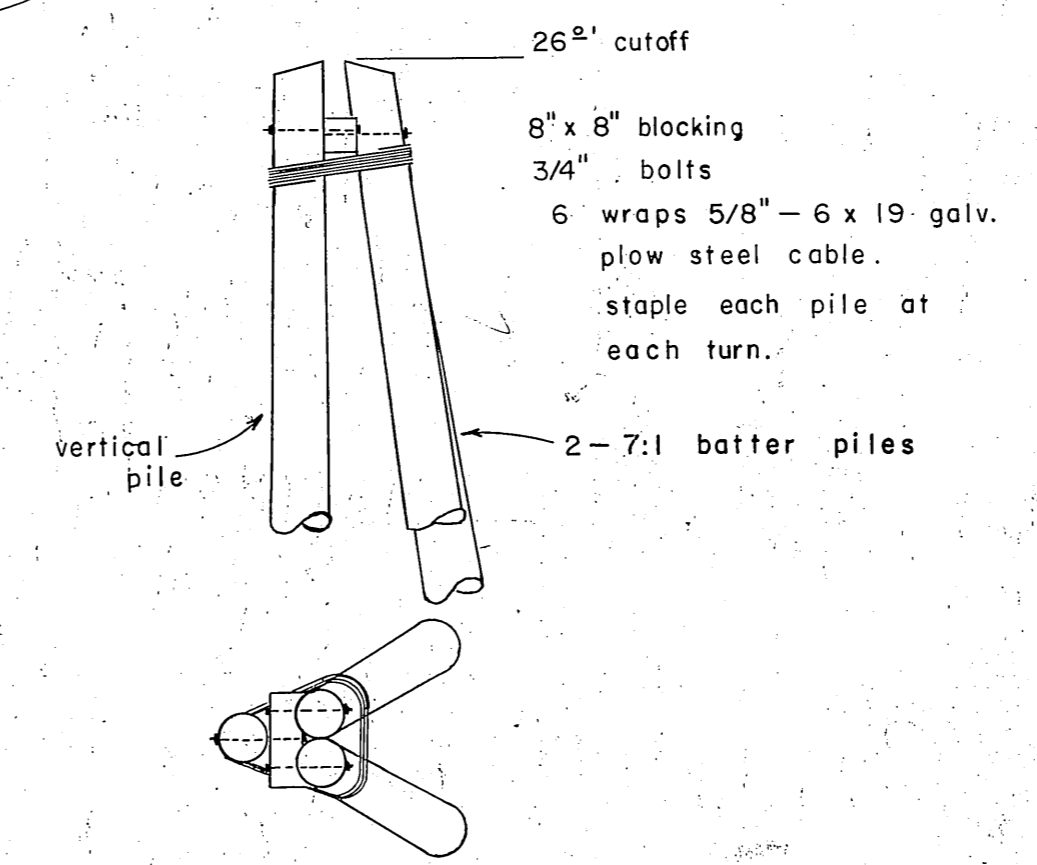


WORK SUMMARY

Major units of this project include the removal & disposal of the existing log float facilities, dismantling the 6' x 60' approach structure, relocation & rehabilitation of the existing 10' x 191' polystyrene float, construction and installation of 2750 S.F. of new floats, 456 S.F. of approach structure, a 16' x 35' Seaplane float (560 S.F.), a 16' x 49' grid-iron and furnishing & driving 17 float piling (1230 Lineal Feet).

INDEX TO SHEETS

TITLE & LOCATION	SHEET
GRID, APPROACH, MISC.	2
TYPICAL FLOATS	3
TYPICAL 16'x35' SEAPLANE FLOAT	4
TYPICAL STEEL GANGWAY	5
TYPICAL CONNECTIONS	6

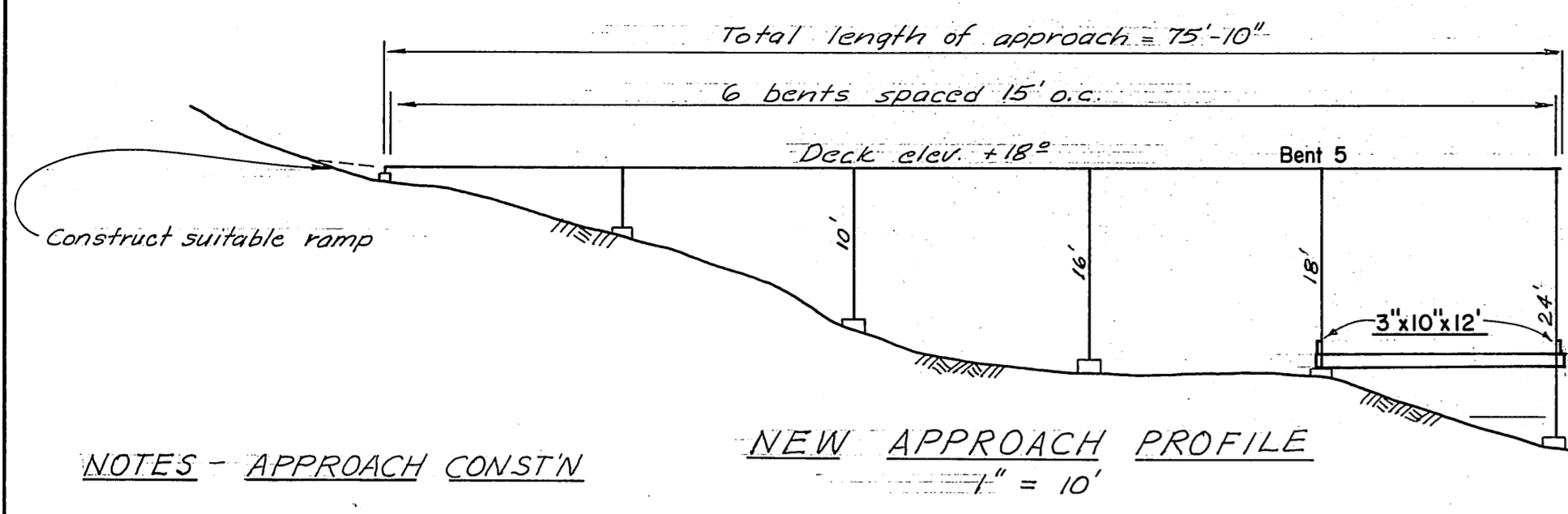


Float Dolphin Pile Spread Elev - 40 ft.
No Scale

3 Pile Float Dolphin Details
Scale 1/4" = 1'-0"

AS BUILT

DATE 5/12/67	APPROVED <i>Irvin D. Haller</i> Acting COMMISSIONER
--------------	--



NOTES - APPROACH CONSTN

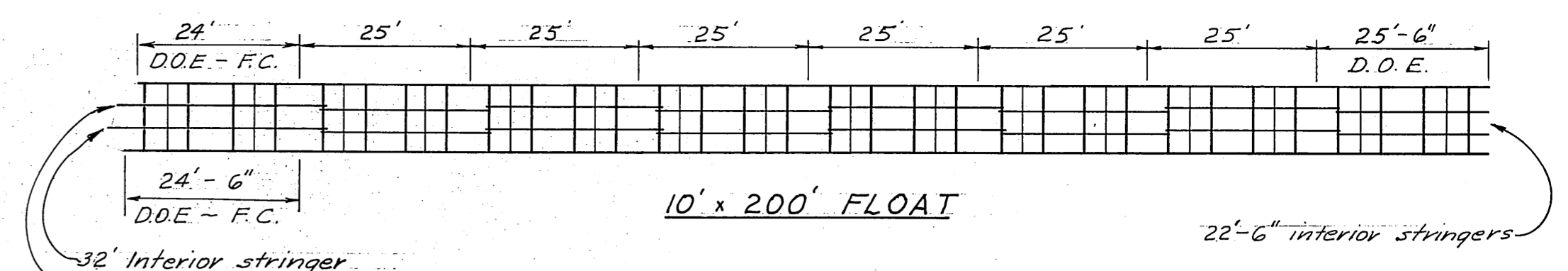
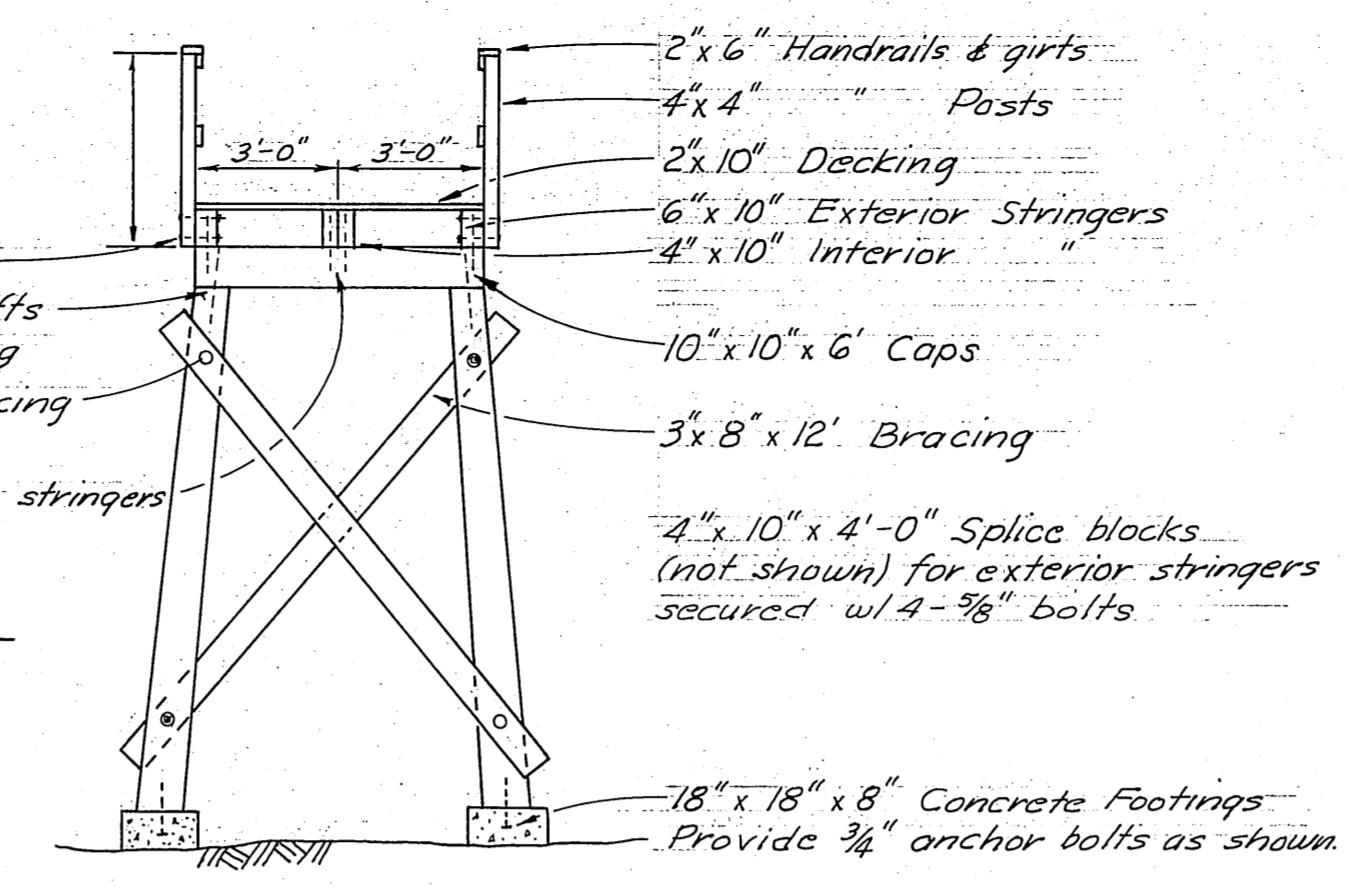
The existing 6" x 6" (4-15' spans) approach structure shall be dismantled and the piling, bracing & stringers salvaged for incorporation in the new structure. All additional materials req'd shall be new. Salvaged piling to be cutoff beyond drift pin penetration and ends treated as specified in para. 5.01(c) of the specs. Contractor will be req'd to furnish new piling for bents #5 & #6. Handrail posts to be placed on 8' centers.

NEW APPROACH PROFILE
1" = 10'

NOTES - GRID CONSTRUCTION

1. Grid bearing piling shall be driven tip down to 15' penetration or refusal as may be determined by the Engr.
2. Bearing piling shall be cutoff on the specified bevel using a chain saw with a fine tooth chain or a Wright saw.
3. Fender piling shall be driven butt down to 15' penetration or refusal as may be determined by the Engr.

TYPICAL APPROACH SECTION
(New & Existing Constn)
scale 1" = 4'



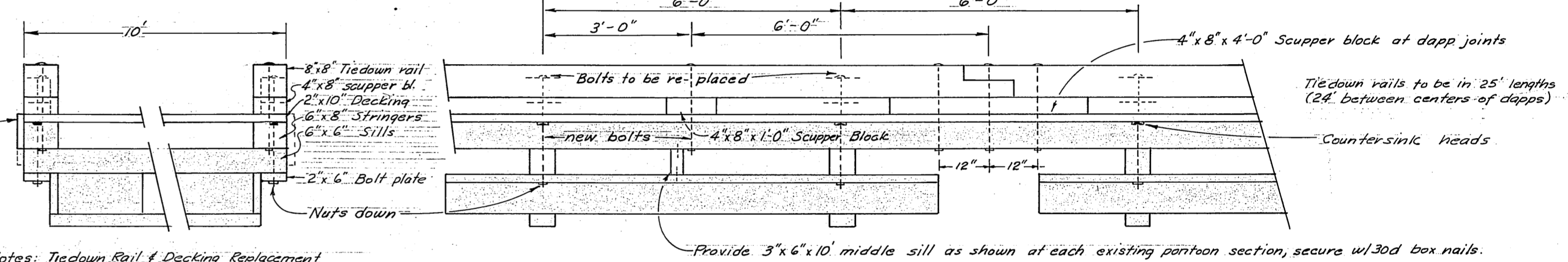
STRINGER DIAGRAMS

1" = 20'

Notes

1. All exterior stringers and T.D.R. to be spliced at the locations indicated. Distances given indicate lengths between centers of dapps.
2. All interior stringers to be in 26' lengths except where noted.
3. Omit T.D.R. at finger float connections, scaplane float end & under gangway.
4. Dimensions will be typical for both sides of float unless both sides are given.

T.D.R. = Tiedown Rail
D.O.E. = Dapp one end
F.C. = Field Cut



TIE DOWN RAIL & DECKING REPLACEMENT DETAILS

1" = 2'

Notes: Tiedown Rail & Decking Replacement
Existing 6" x 6" tiedown rails, 3" scupper blocks, 2" decking and 2' x 12" bumpers to be removed and replaced with 8" x 8" S4S tiedown rails, 4" x 8" S4S scupper blocks, 2' x 10" S1S2E decking and 2' x 8" S4S bumpers. Existing tiedown rail thru sill bolts to be replaced with shorter bolts securing sill stringer & bolt plate. New tiedown rail to be secured with 3/4" bolts as shown. All bolts to be 3/4" economy head type with malleable iron washers. All replacement lumber to be construction grade, Douglas Fir, 8" creosote retention - empty cell process. Six pile collars shall be incorporated into the reconstructed 10' x 19' float. Construction det's shall conform to the inside collars on Sheet #3.

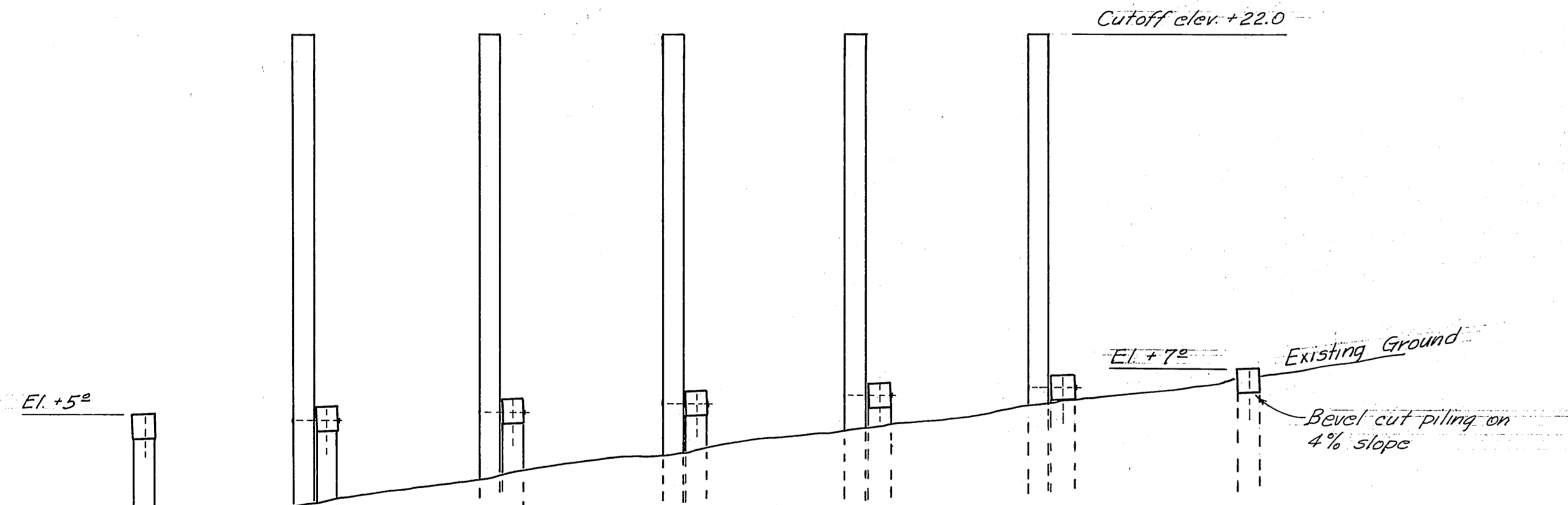
GRID - APPROACH

ITEM	MATERIALS	
	DRESSING	TREATMENT
Piling	Class A	12" creosote
Caps - Bracing	Rough	" " "
Stringers	S 4 S	8" " "
Decking	S 1 S 2 E	" " "
Handrail Posts	S 4 S	" " "
Handrails-Girts	S 4 S	" " "

All timber material to be Construction grade Doug. Fir
All 12" creosote treatment to be Full Cell
All 8" " " Empty Cell

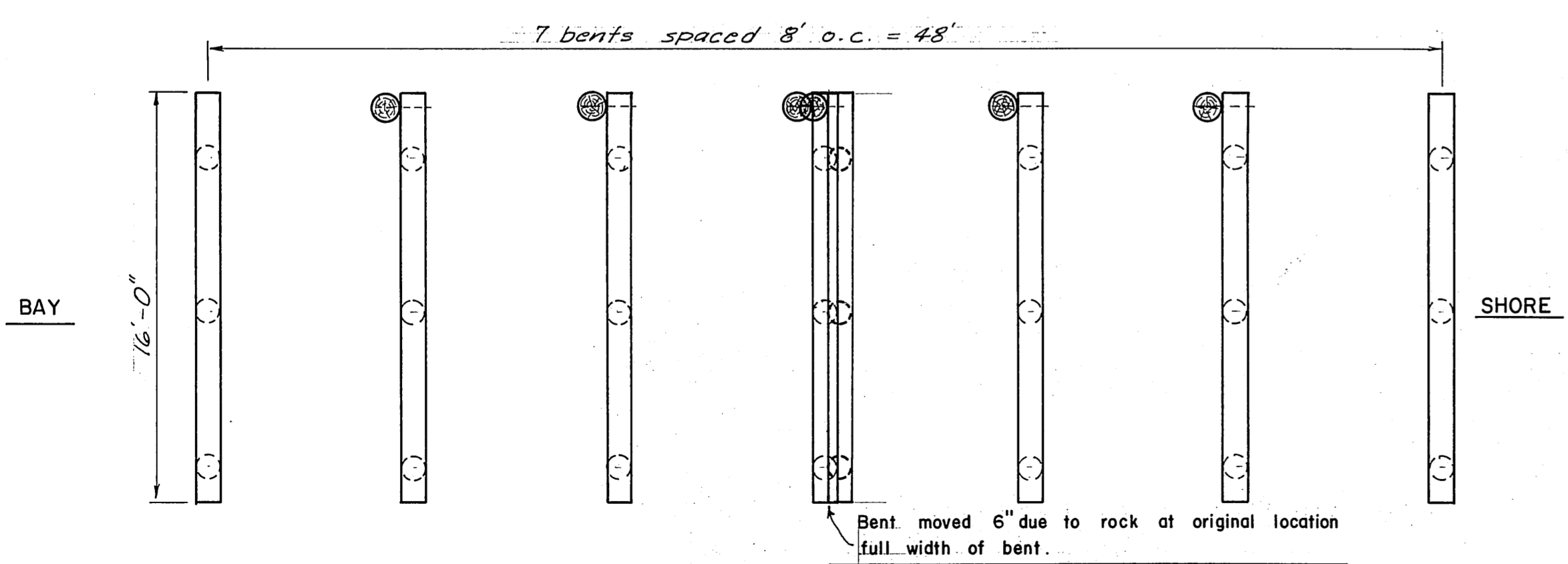
GENERAL NOTES

All hardware to be hot dipped galvanized. A malleable iron washer shall be placed between all nut & wood surfaces. All bolts to be of the economy head type. Bolt holes to be drilled true size. Drift holes to be drilled 1/8" undersize. All field drilled holes shall be treated with hot creosote oil. Pressure treated creosote material shall be cut to size prior to treatment. Field drill drift bolt holes.



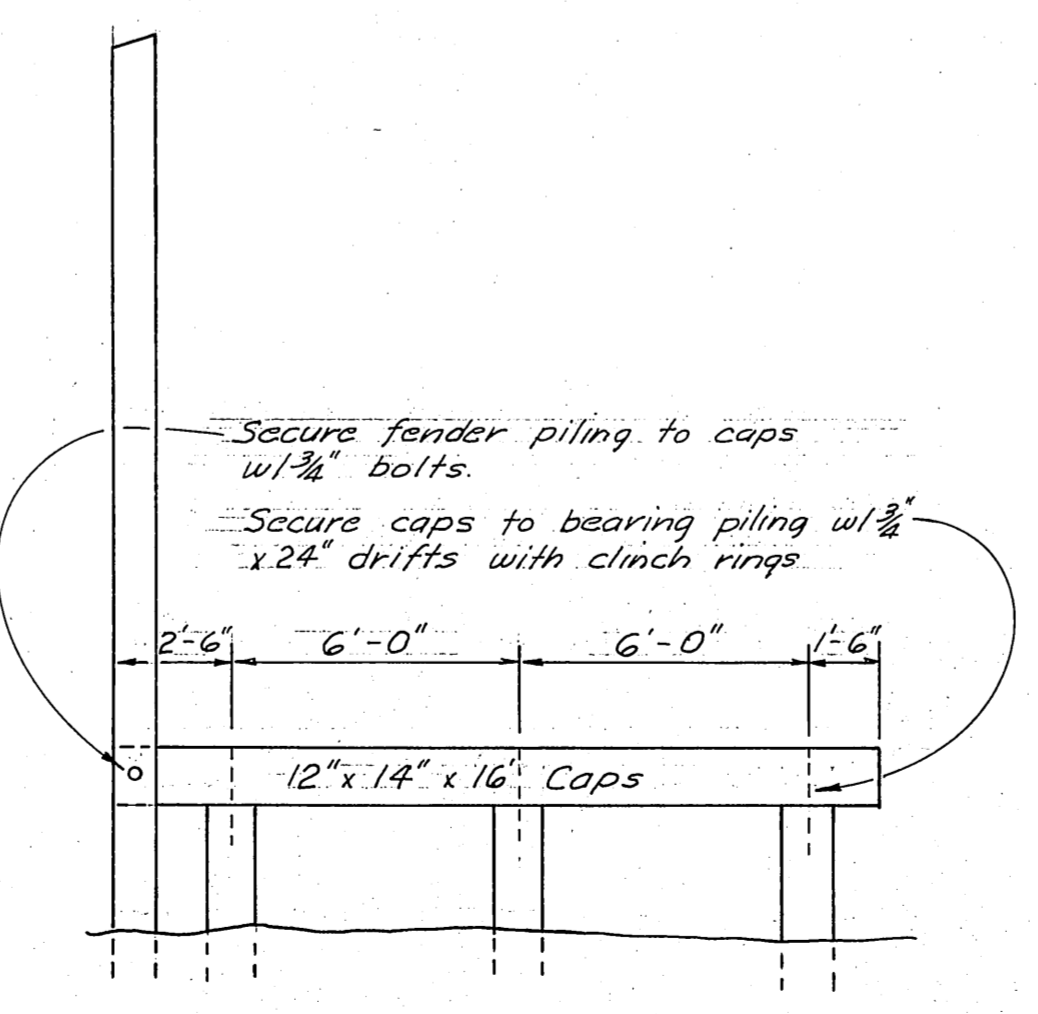
GRID PROFILE

1" = 5'



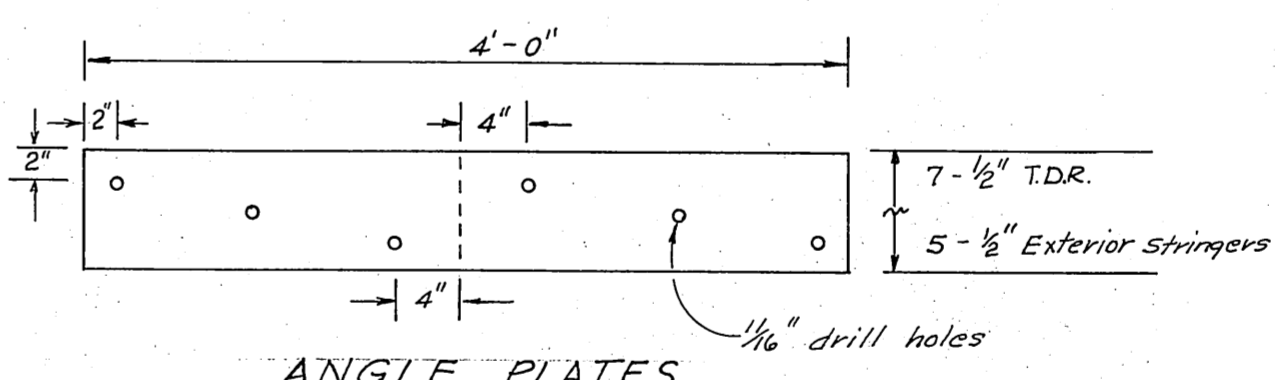
GRID PILE & CAP LAYOUT

1" = 5'



GRID SECTION

scale 1" = 4'

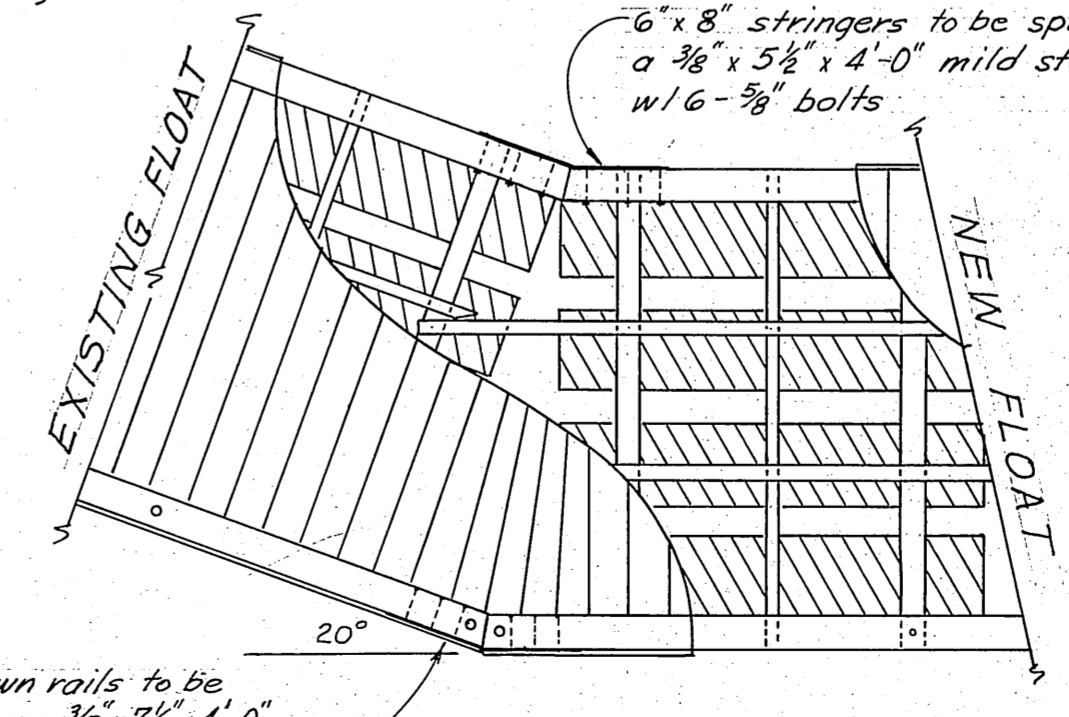


ANGLE PLATES

Decking at float angle to be wedge cut to provide smooth transition about angle

Cut back stringers on existing float & extend stringers (interior) from new float as shown.

6" x 8" stringers to be spliced using a 3/8" x 3 1/2" x 4'-0" mild steel IP secured w/6-3/8" bolts

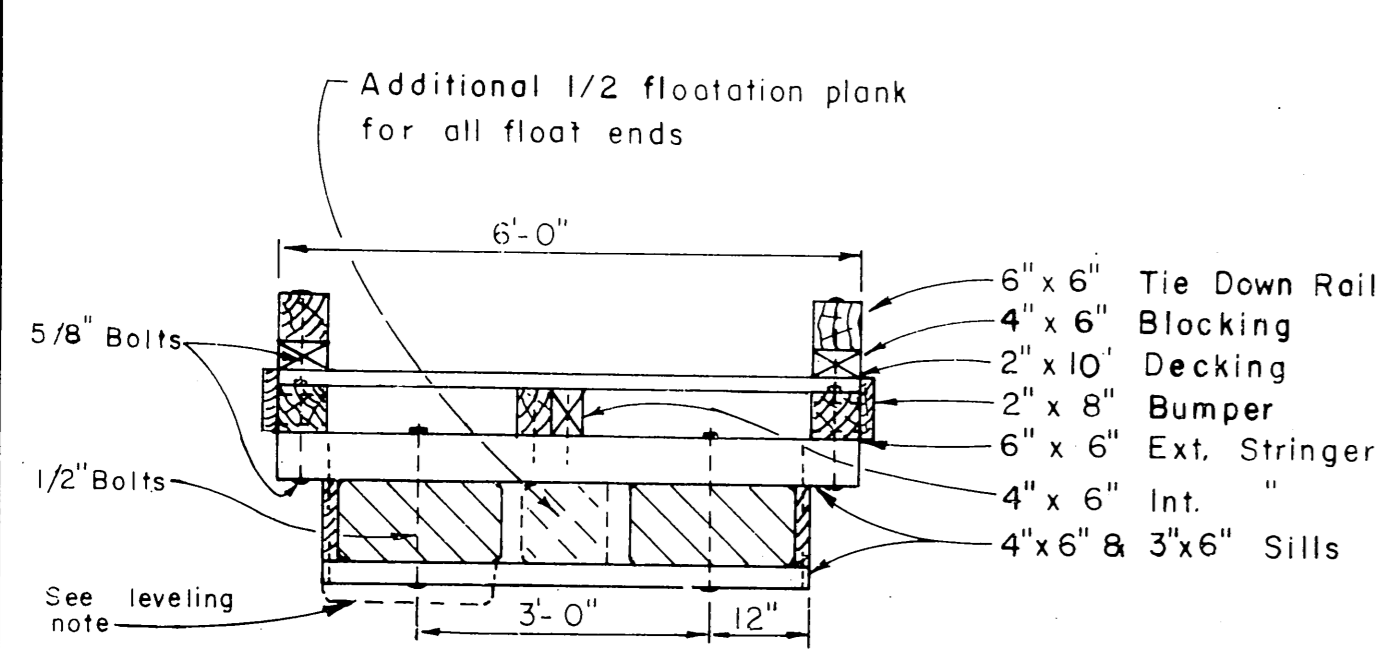


ANGLE DETAIL

scale 1" = 4'

APPROACH-GRID-MISC. DETAILS

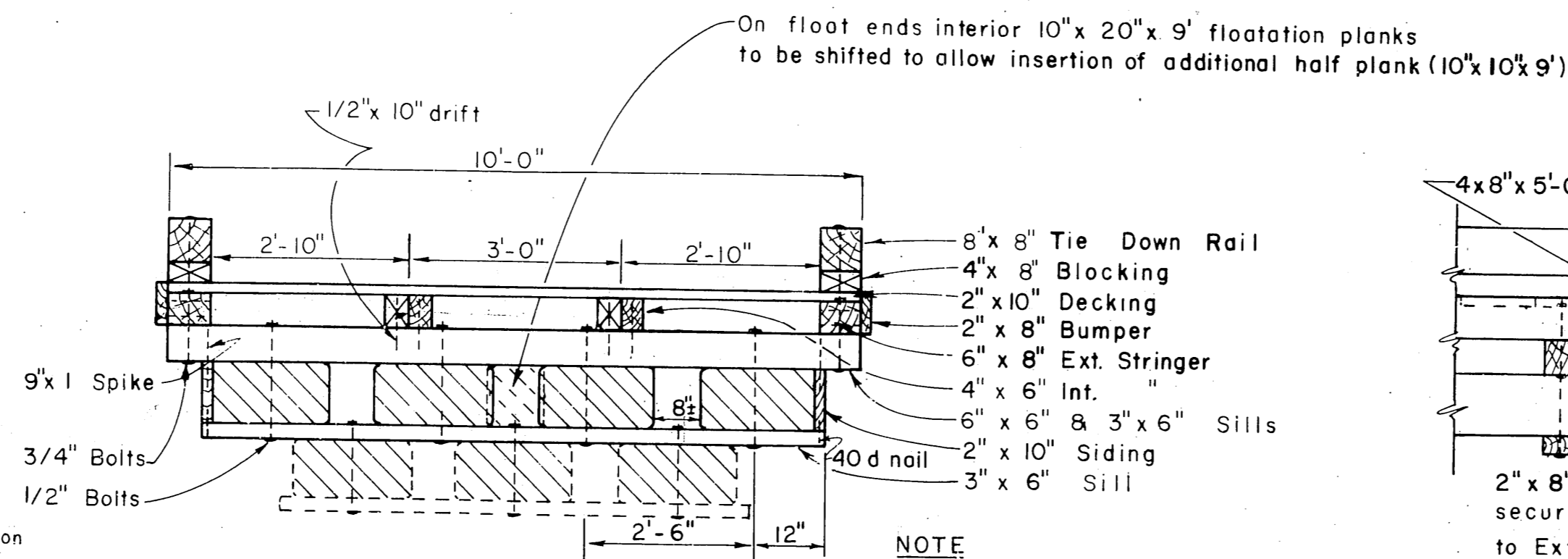
SCALE As shown
DATE 5/15/67
PROJ. NO. 3-68/21
APPROVED DON STATTER DIRECTOR
R8-DW
CHECKED BY D.S.



6' FLOAT SECTION
1/2" = 1'-0"

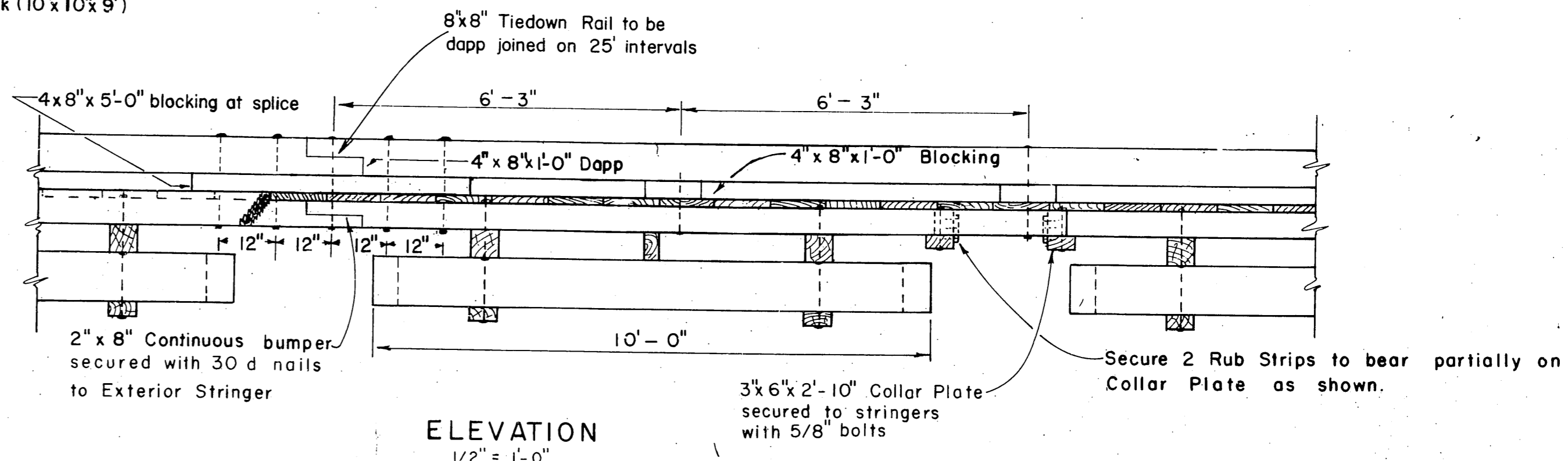
NOTE
6' float construction shall conform to 10' float constr. except as noted.

Leveling note
5' x 20" x 4' to 5' leveling floatation shall be installed as directed by the Engr. (required on approx. 20% of the stall floats including 6' stall floats) Place floatation between lower sill members with the outer edge bearing on siding members (cut side up) Pin floatation together with 1/2" x 14" dowel stock every 12".

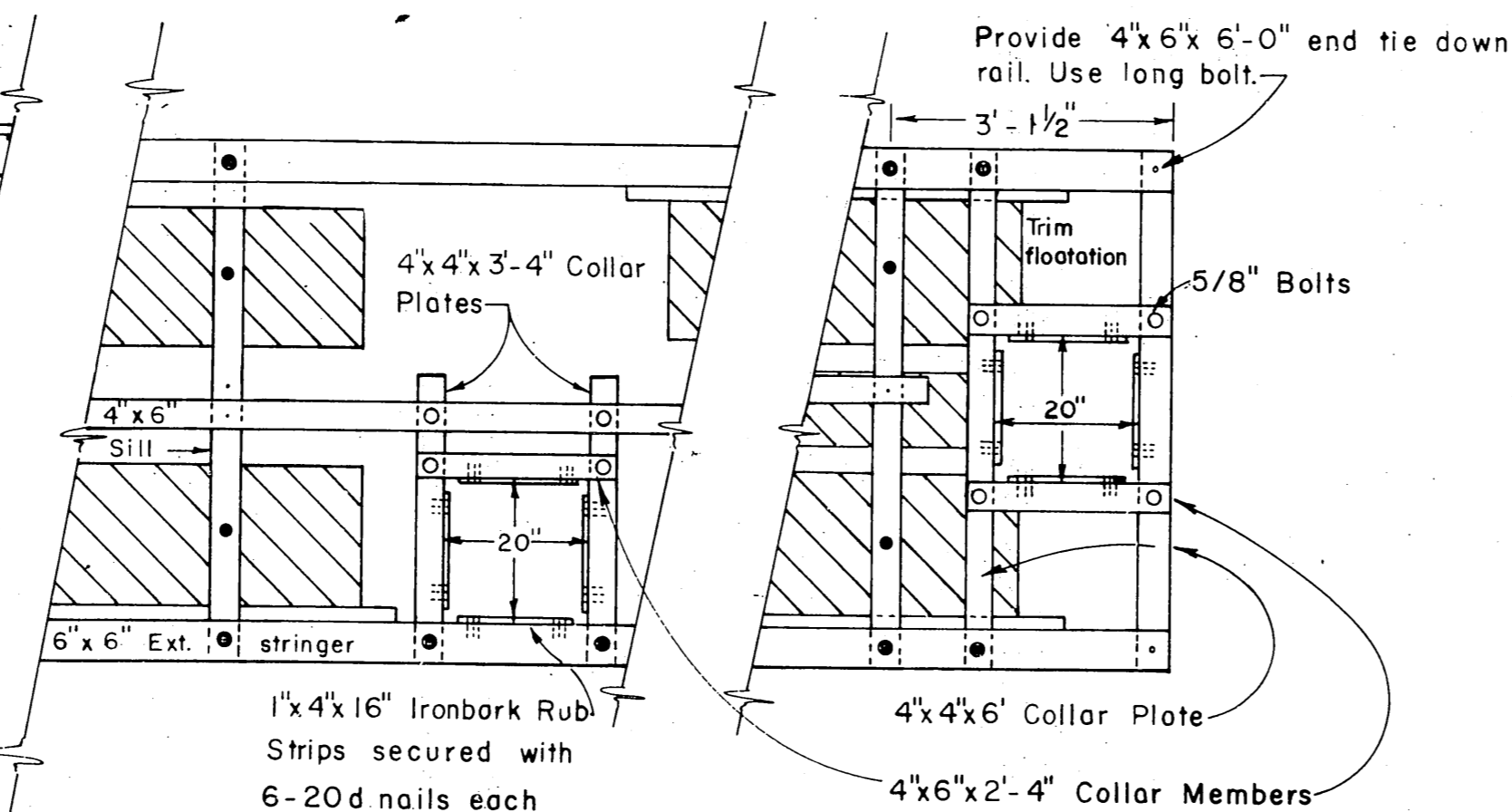
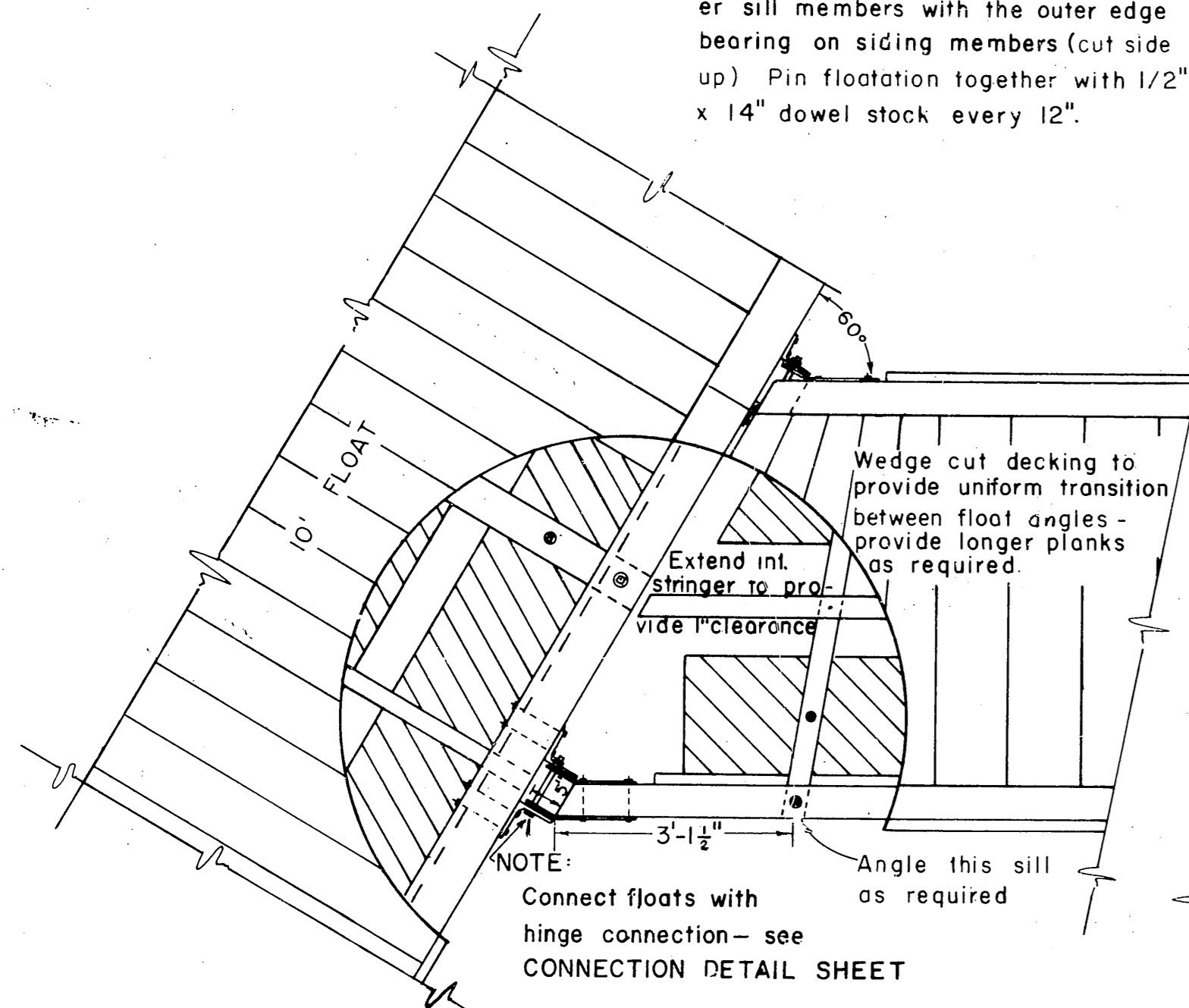


10' FLOAT SECTION
1/2" = 1'-0"

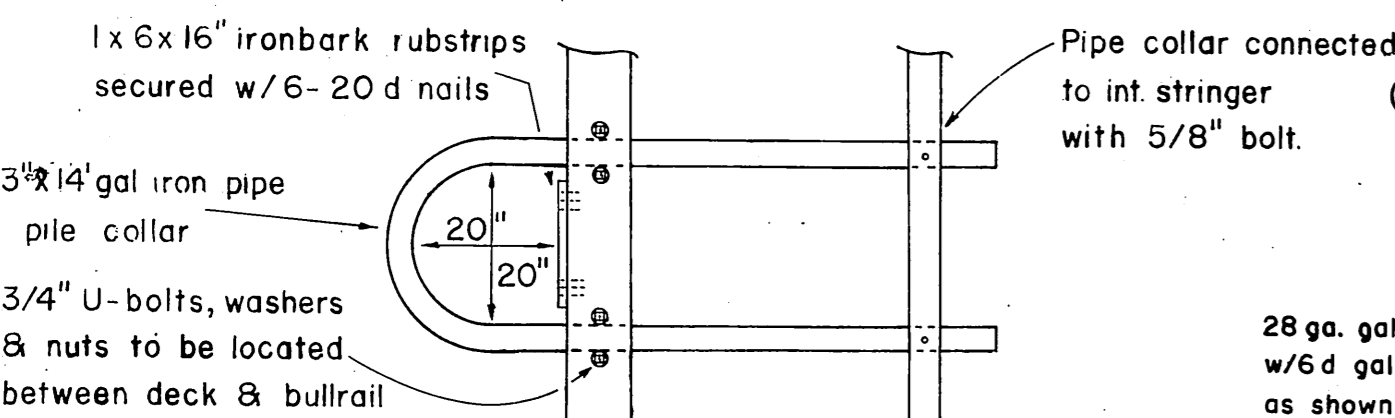
NOTE
Additional floatation to be added on gangway float section - 3 billets as shown timber gangway - 2 for steel gangway.



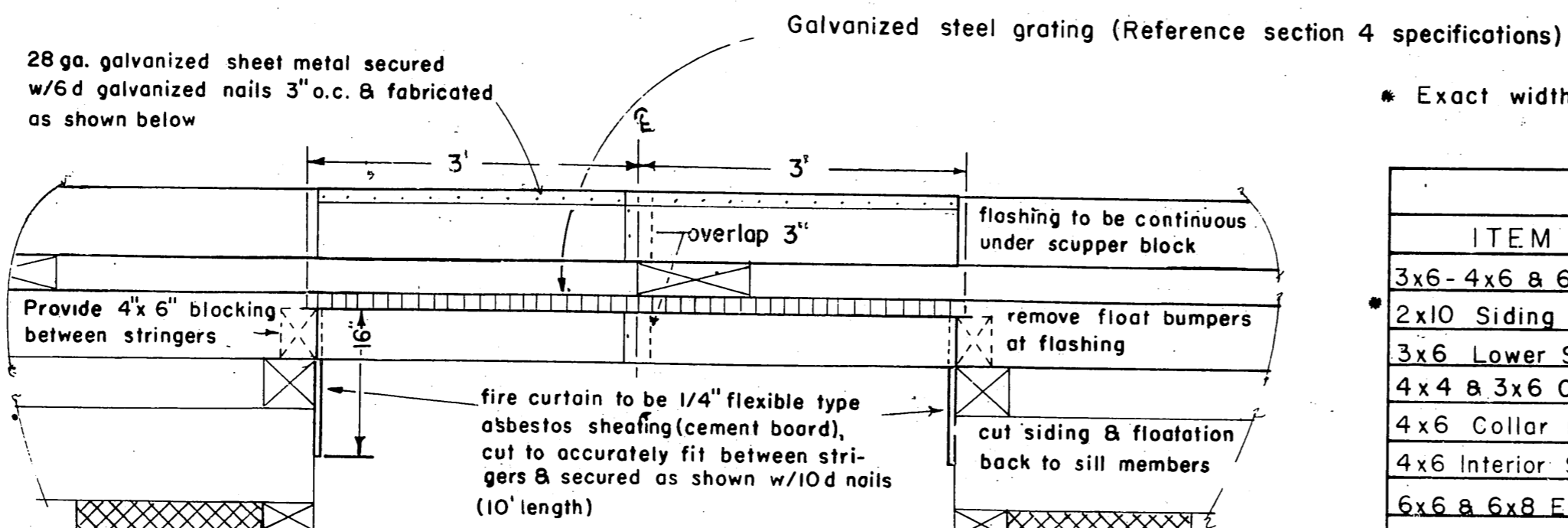
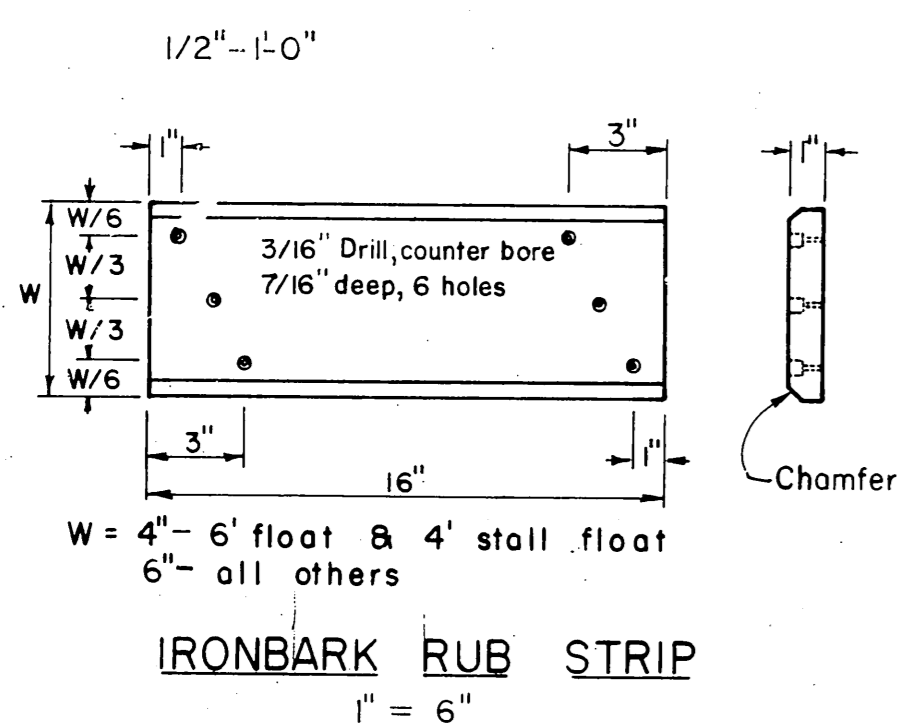
ELEVATION
1/2" = 1'-0"



CONNECTION & COLLAR DETAIL
6' STALL FLOAT
1/2" = 1'-0"

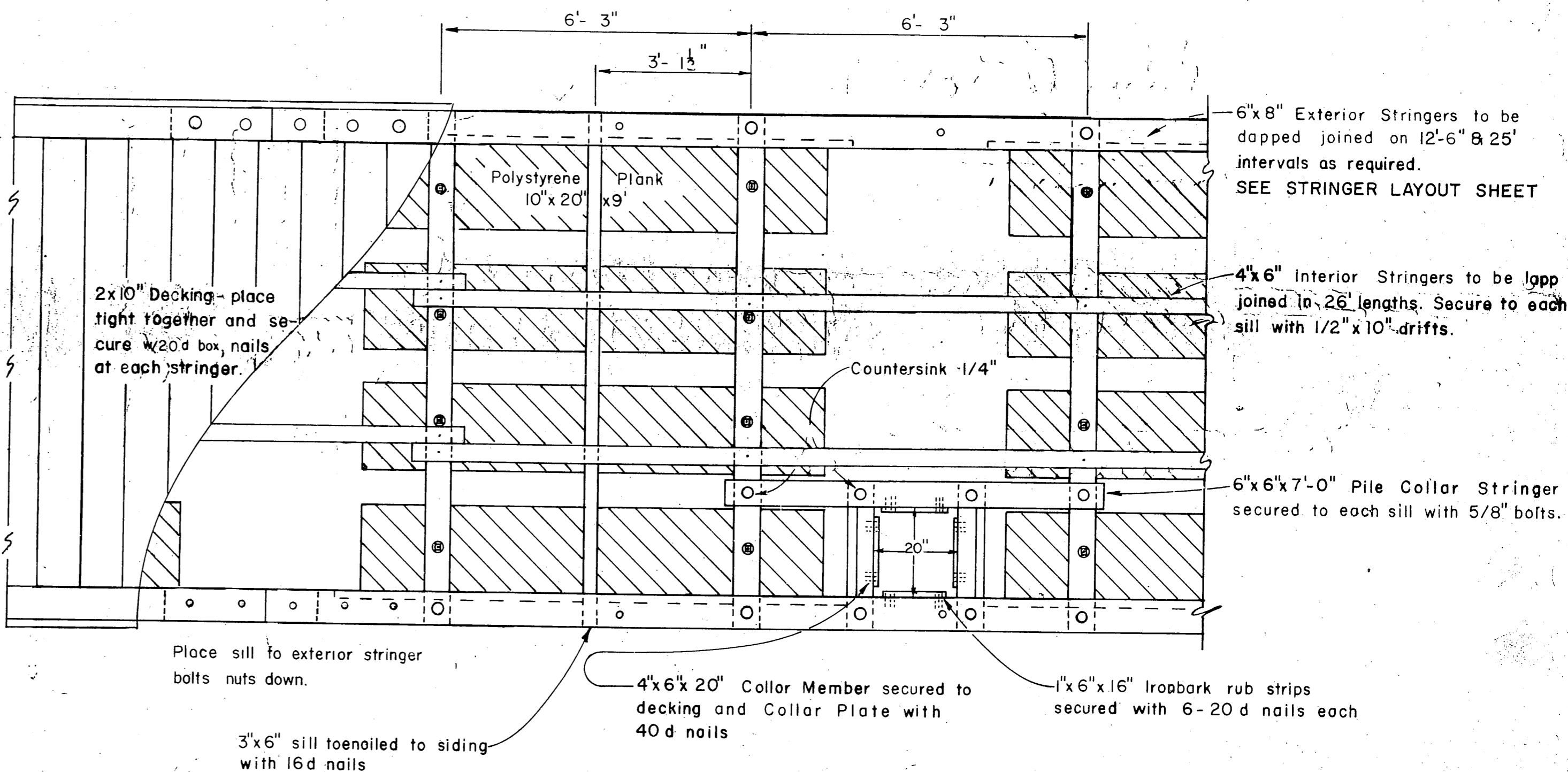


PIPE PILE COLLAR DETAIL
1/2" = 1'-0"



FIRE STOP DETAILS
Scale 3/4" to 1'-0"

NOTES
Secure grating to stringers with saddle clips & 1/4" lag bolts - 5 at each stringer per 6' width



PLAN VIEW 10' FLOAT
1/2" = 1'-0"

NOTES

All hardware to be hot-dipped galvanized. A malleable iron washer shall be placed between all nut and wood surfaces. All bolts to be of the economy headed type. Bolt holes to be drilled true size except sill bolt holes for floatation planks 1/8" oversize. Drift holes to be drilled 1/16" undersize. All field drill holes shall be treated with hot creosote oil. All pressure treated creosote material shall be cut to size prior to treatment. Tie down rails shall extend across all float ends except under gangway. All bolt heads facing decking shall be countersunk 1/4" inch previous to treatment. Field drill all drift bolt holes. A barrier of 6 mil black polyethylene shall be placed between the contact surfaces of all creosote timber and floatation material (except float siding members)

REVISIONS JUNE 1966

1. Change deck to 2 x 10 placed tight together. AUG. 1966
1. Change stringer & rail splice locations - delete splice block

* Exact width to conform to width of floatation material

ITEM	DRESSING	TREATMENT
3x6-4x6 & 6x6 upper sill	S-1-E 1/8" off	12 lbs. ret.
2x10 Siding	2 x 10 1/2	" "
3x6 Lower Sill	Rough	" "
4x4 & 3x6 Collar Plates	Rough	8 lbs. ret.
4x6 Collar Members	S-2-E	" "
4x6 Interior Stringers	" "	" "
6x6 & 6x8 Ext Stringers	S-4-S	" "
6x6 Collar Stringers	" "	" "
2x10 Decking	S-1-S-2-E	" "
4x6 & 4x8 Blocking	S-4-S	" "
6x6 & 8x8 Rail	" "	" "
2x8 Bumper	" "	" "

All material to be construction grade Douglas Fir
All piling will be Class A creosoted to 12 lbs. retention
All 12 lb. ret. creosoted treatment to be Full Cell
All 8 " " " Empty Cell

PRE-DRILLED BOLT HOLES

COLLAR MEMBERS - all holes
SILLS - holes for floatation plank bolts
STRINGERS - 1. holes for stringer to sill bolts

TIE DOWN RAIL - all holes

PILE COLLAR STRINGER - 10' FLOAT - all holes

FIELD DRILLED BOLT HOLES

SILLS - 1. holes for stringer to sill bolts
2. pile collar stringer to sill

PILE COLLAR INT. STRINGER - 6' FLOAT - all holes

RAIL BLOCKING - all holes

COLLAR PLATES - all holes

EXT. STRINGER - 1. holes for tie down rail bolts
2. " " pile collar plate bolts

REVISIONS MARCH 1965

1. Omit end plates.
2. Clarified pre-drilling note.
3. Change decking gap from 1/2" to 3/4"
4. Change 2" x 10" rough siding members to 2" x 10 1/2 " actual size.
5. Change 3" x 6", 4" x 6" and 6" x 6" upper sills from rough to S-1-E 1/8" off.
6. Revised hinge connection and 6' float pile collar.
7. Change sill spacing from 6'-0" to 6'-3".

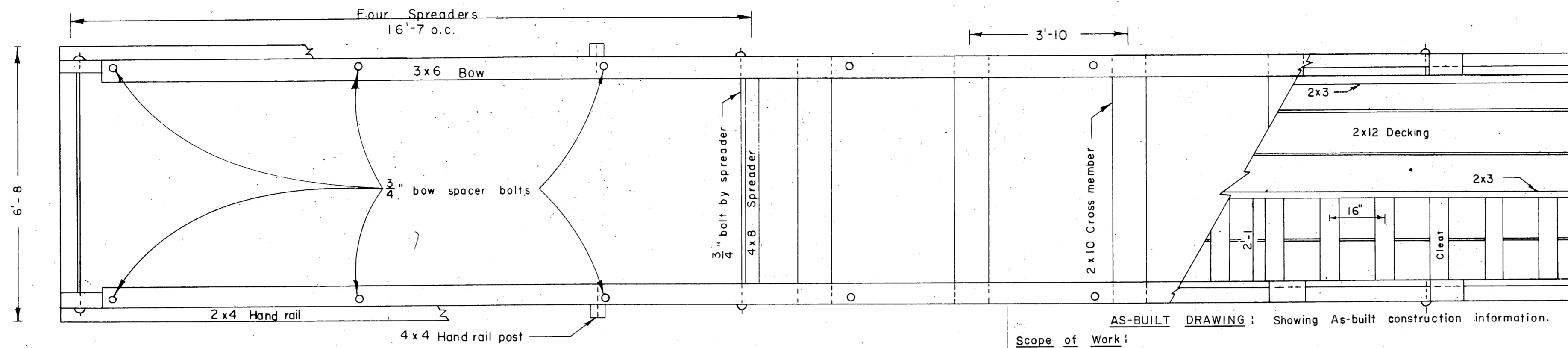
REVISIONS JAN 1966

1. Add polyethylene barrier note
2. Delete reference to extruded polystyrene billets

STATE OF ALASKA
DEPARTMENT OF PUBLIC WORKS
DIVISION OF WATER AND HARBORS

TYPICAL FLOATS

SCALE AS SHOWN	APPROVED DON STATTER
DATE March 1965	DIRECTOR
PROJ. NO.:	
DESIGNED BY RPH-DS	DRAWN BY D W
	CHECKED BY DS



PLAN

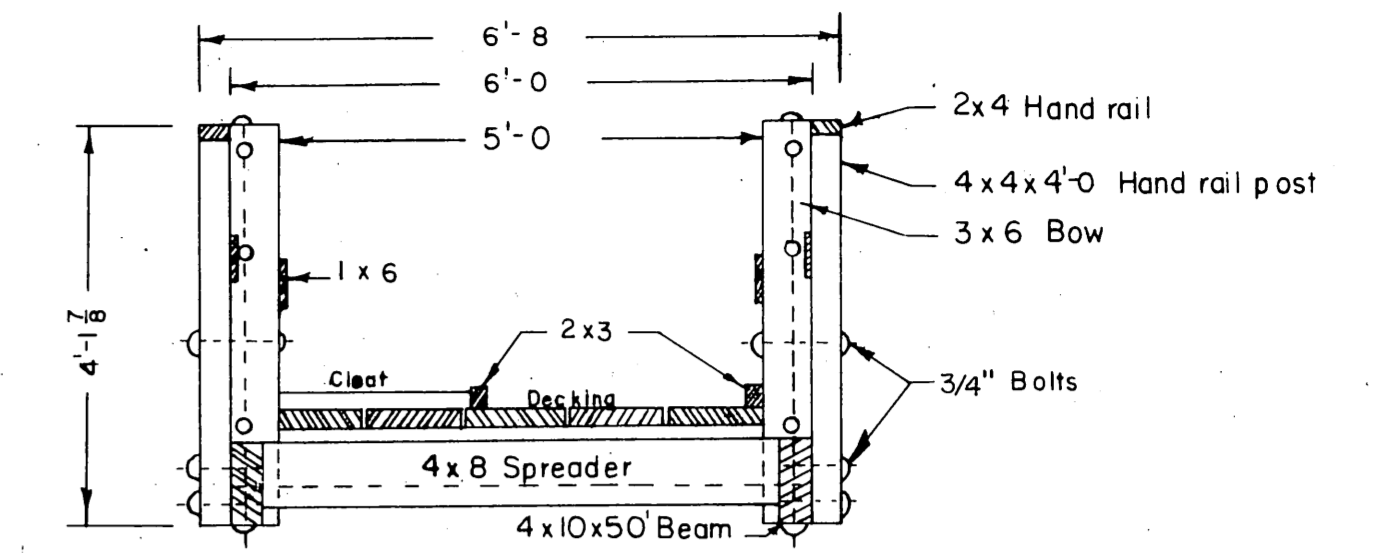
1/2" = 1'

AS-BUILT DRAWING: Showing As-built construction information.

Scope of Work:

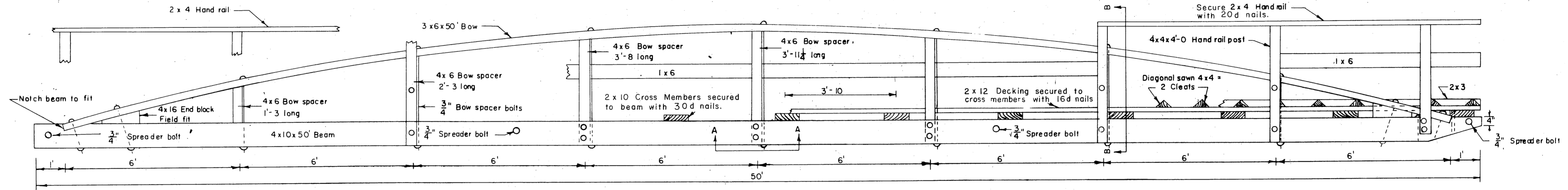
Rehabilitate gangway; replace existing non preservative treated Sitka Spruce (2" x 10" cross members, 2" x 12" decking, 4" x 4" cleats, 2" x 3" runners, 2" x 4" handrail and 1" x 6" girts only) with 8# creosote treated (empty cell process) Douglas Fir material, graded as dressed as shown on Material Bill. Field treat the remainder of the timber materials with a thorough brush coat of hot creosote oil applied during warm dry weather. Replacement of materials to follow those construction details as shown on this As-built drawing as closely as practicable.

All bow spacers, spreaders & handrails posts new creosote material #8 also.



SECTION B-B

1/2" = 1'

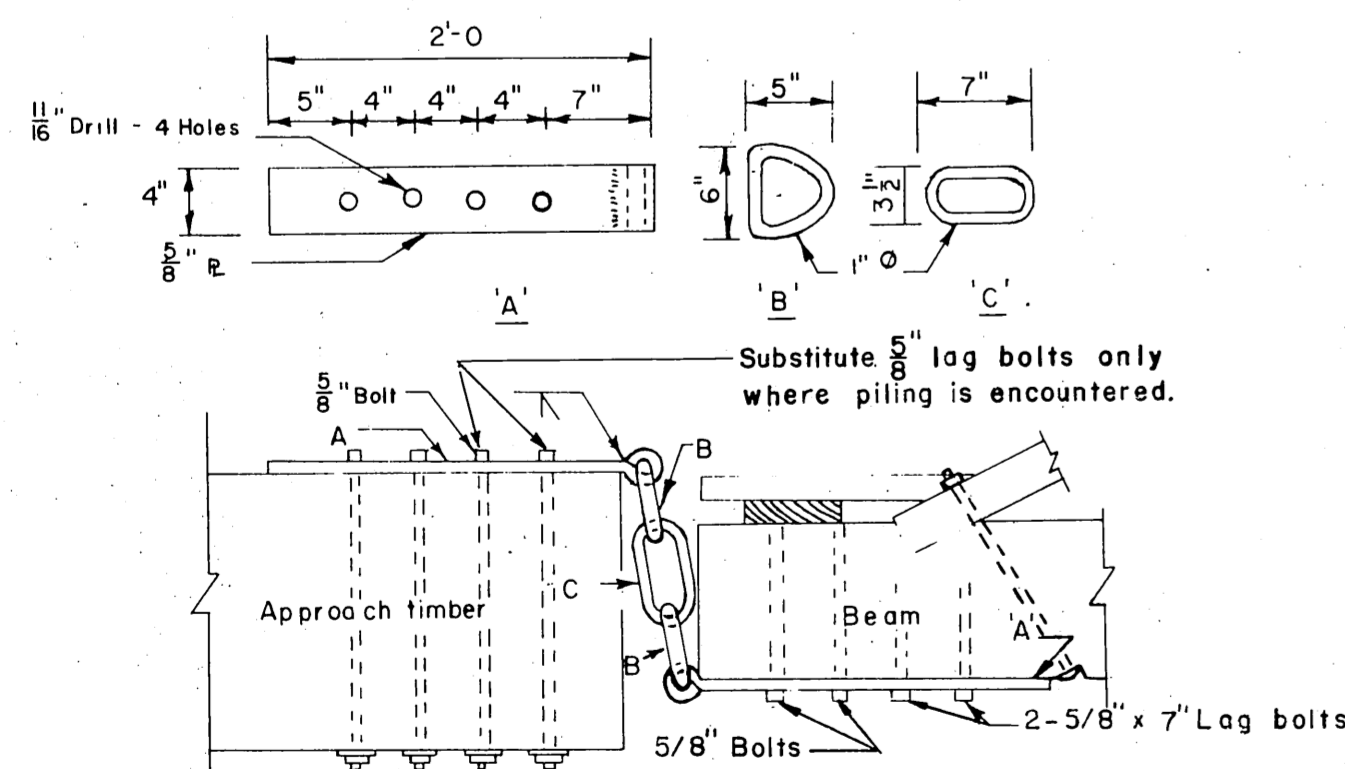


SIDE ELEVATION

1/2" = 1'

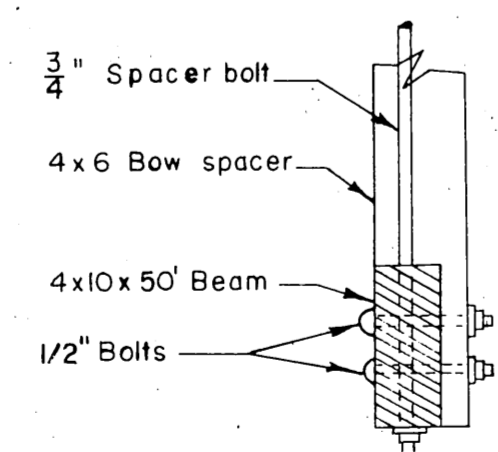
NOTE

Section A-A applies only to the 3 center Bow Spacers. Remaining 4 Bow Spacers are flush with top of beam. Bow Spacer heights are centerline measurement.



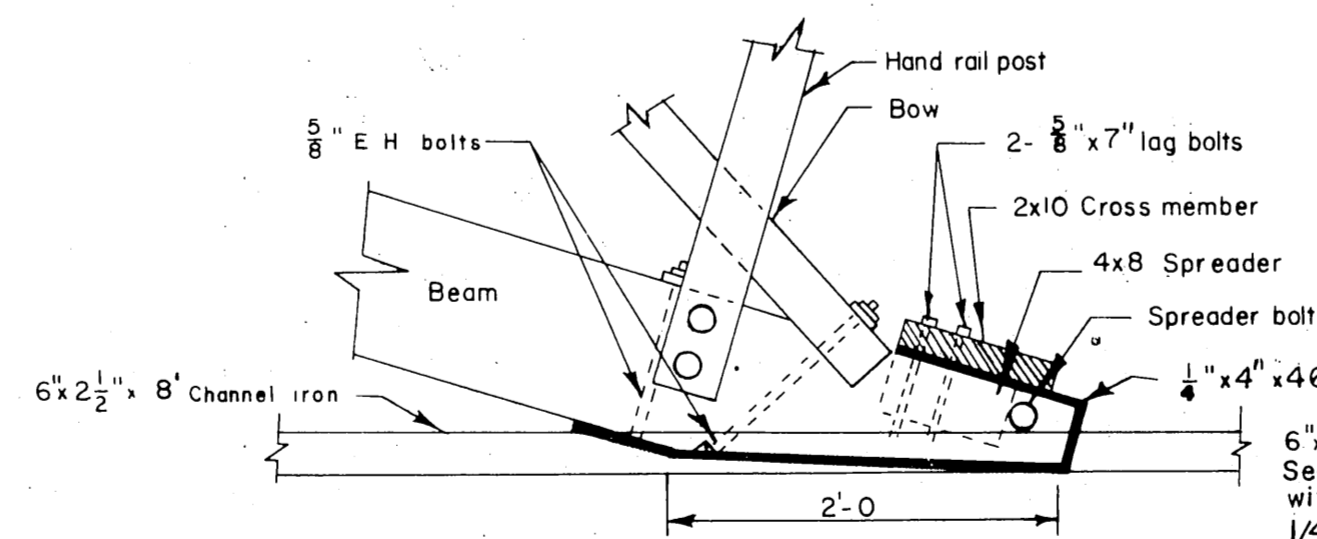
HANGER DETAIL

1" = 1'

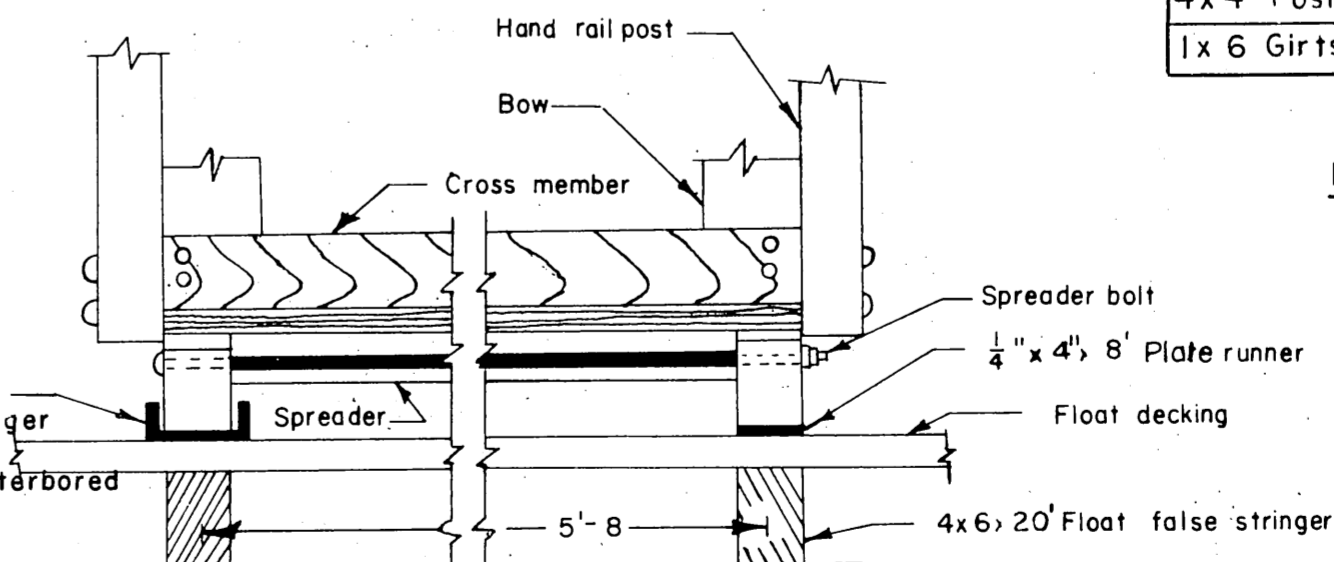


BOW SPACER-BEAM CONNECTION

1" = 1'



SIDE VIEW



END VIEW

GANGWAY - FLOAT CONNECTION

1" = 1'

MATERIALS				
ITEM	GRADE	DRESSING	TREATMENT	MATERIALS
4x10 Beams	Select Struct.	S 2 E	Creo. 10 # ret.	Douglas Fir
3x6 Bow	"	S 4 S	" " "	" " "
4x6 "Spacer	Construction	S 2 E	None	Sitka Spruce
2x10 Cross Member	"	S 1 S	"	" " "
4x8 Spreader	"	Rough	"	" " "
2x12 Decking	"	S 1 S	"	" " "
4x4 Cleats	"	Rough	"	" " "
2x3 Runners	"	"	"	" " "
2x4 Handrail	"	S 4 S	"	" " "
4x4 Posts	"	"	"	" " "
1x6 Girts	"	"	"	" " "

NOTES

All material shall be cut to size prior to treatment. All hardware to be hot dipped galvanized. All bolts to be of the mushroom headed type. A malleable iron washer to be placed between nut & wood surfaces. Lag bolts to be gimlet pointed. All cuts & notches shall be treated with asphaltic roofing compound.

NO	DATE	REVISION	BY

ALASKA DEPARTMENT OF PUBLIC WORKS

POINT BAKER
GANGWAY REPAIRS
(AS-BUILT DRAWING)

SCALE As Shown
DATE July 21, 1960
FILE NO 3-68142

APPROVED DON STATTER
Director

SURVEYED BY
DRAWN BY MGR CHECKED BY RPH



$S 66^{\circ} 00' E$
750.00'

