

STATE OF ALASKA DEPARTMENT OF HIGHWAYS

PLAN AND PROFILE PROPOSED HIGHWAY PROJECT

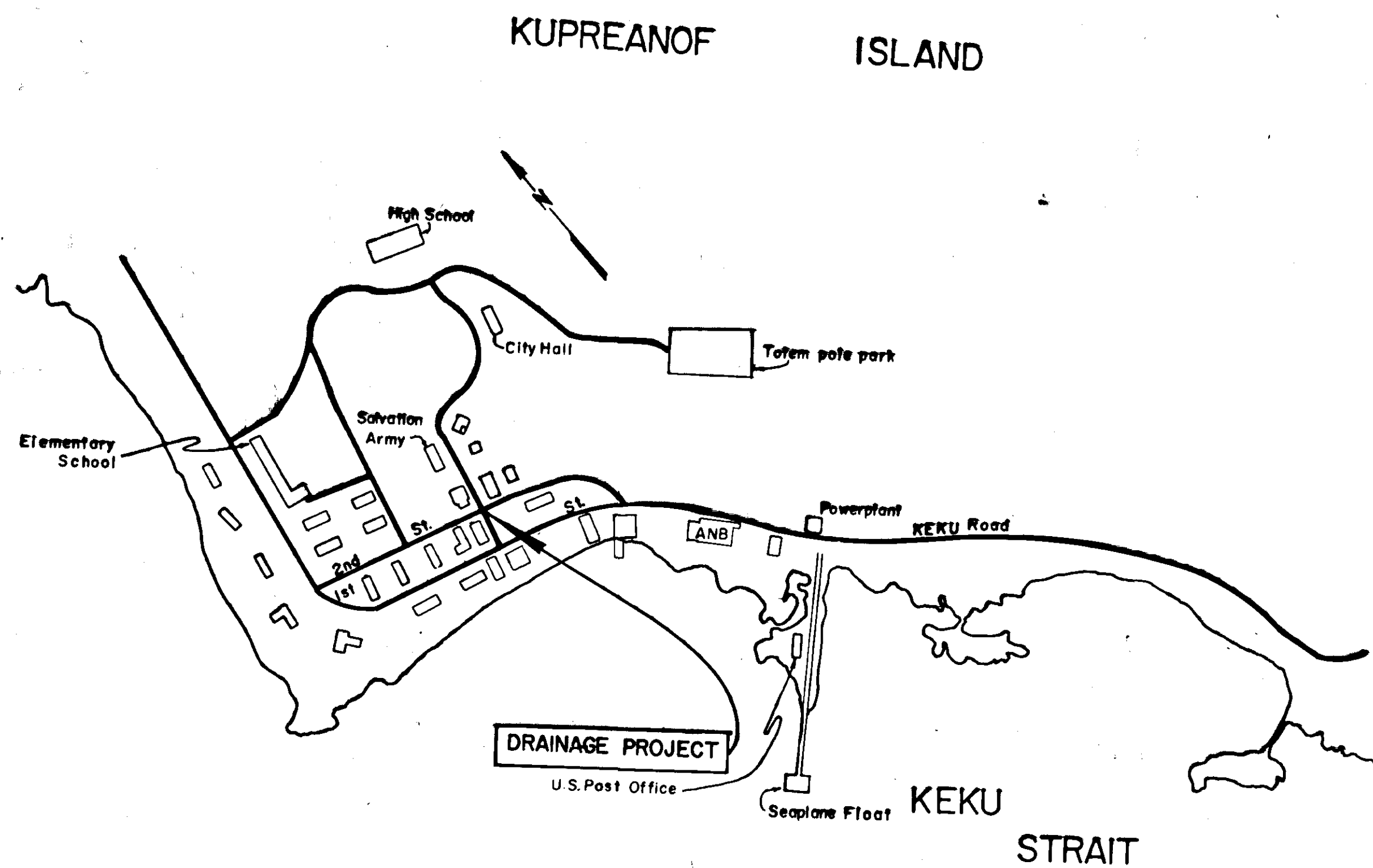
KAKE DRAINAGE G - 30319

STATE	PROJECT	SHEET NO.	TOTAL SHEETS
ALASKA	G-30319	1	3

INDEX OF SHEETS

SHEET NO.	DESCRIPTION
1	TITLE
2	PLAN & PROFILE
3	DETAILS & Estimate of Quantities

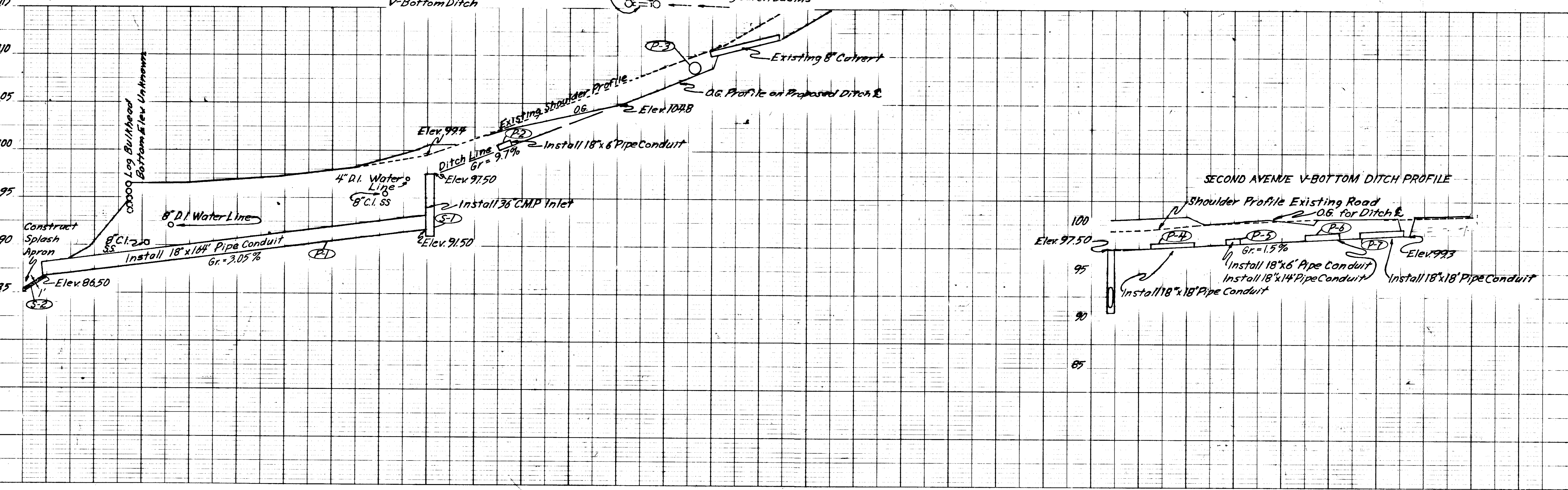
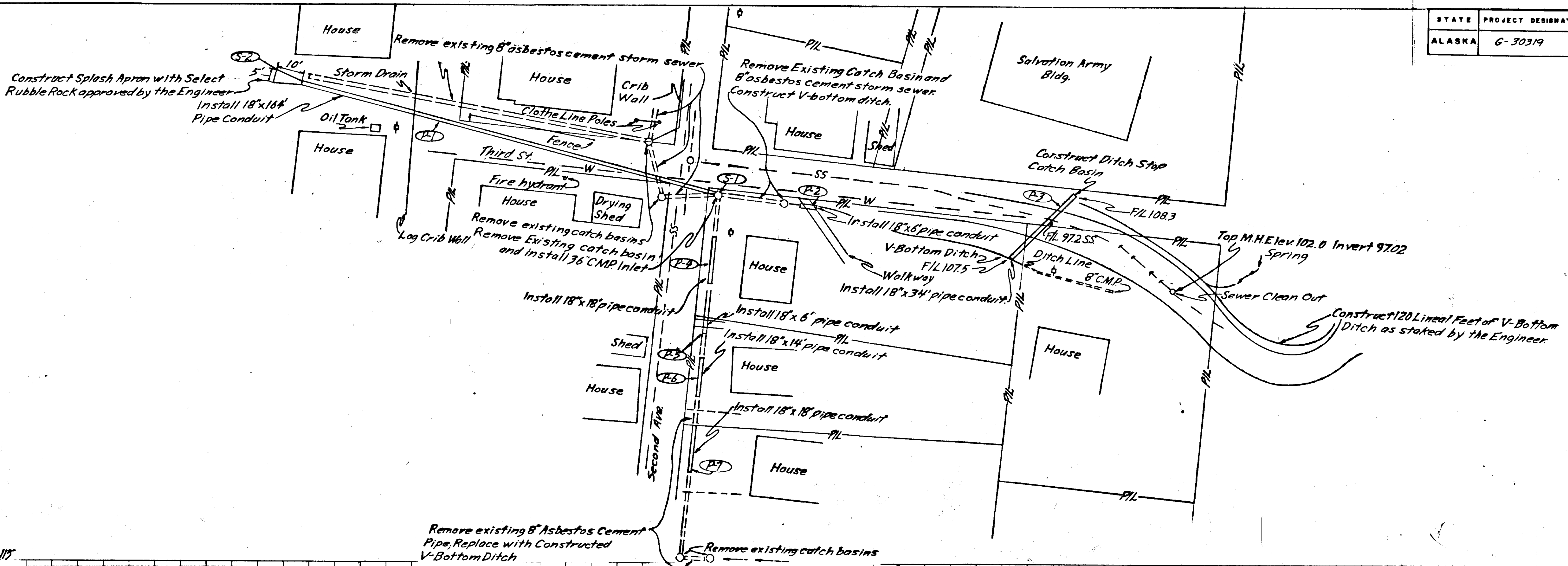
Stand. Dwg. D-02.01



APPROVED
Marion S. Mill
SOUTHEAST DISTRICT ENGINEER

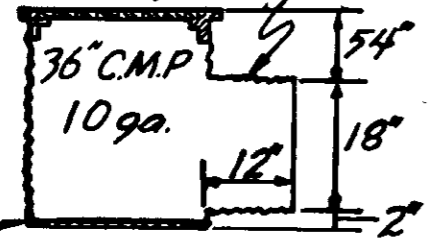
APPROVED
A. C. Hall
COMMISSIONER OF HIGHWAYS Date 4/30/74

STATE	PROJECT DESIGNATION	YEAR	SHEET NO.	TOTAL SHEETS
ALASKA	G-30319	1973	2	3



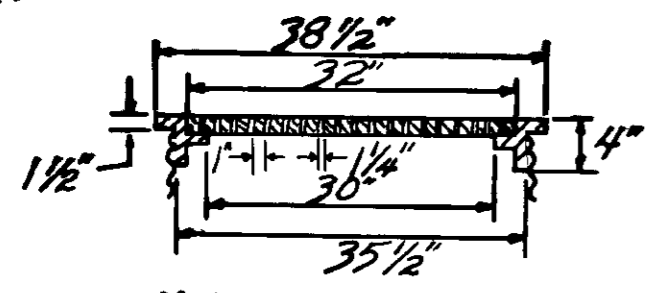
ALASKA	PROJECT DESIGNATION	YEAR	SHEET NO.	TOTAL SHEETS
	G-30319	1973	3	3

36" C.M.P. INLET
 Factory welded 1' min. length stub

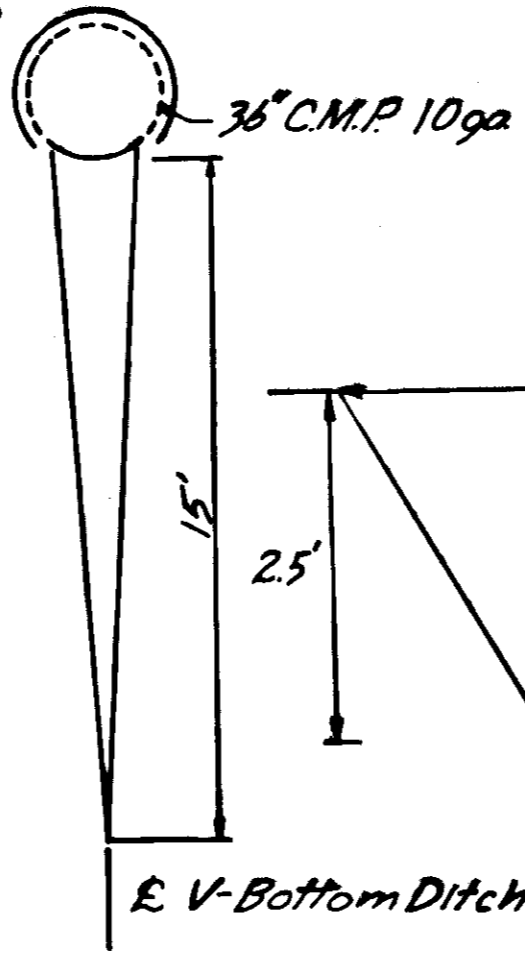


1/4" Galvanized Steel Plate, Factory welded

GRATE DETAIL

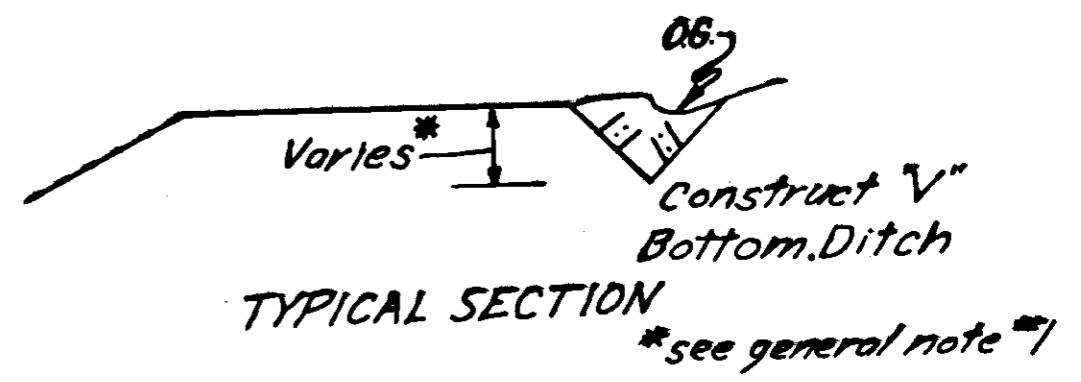


Note: Grate and Frame shall weigh a minimum of 160 lbs.



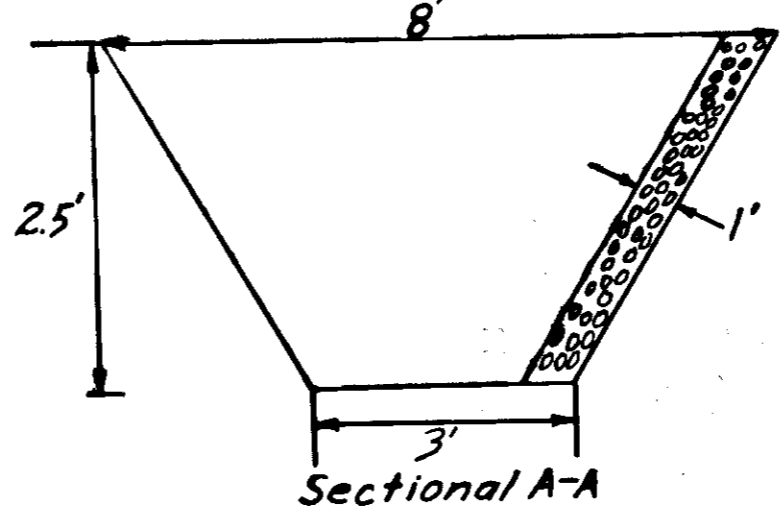
36" C.M.P. 10ga

Transition from V-Bottom Ditch to Flat Bottom Ditch



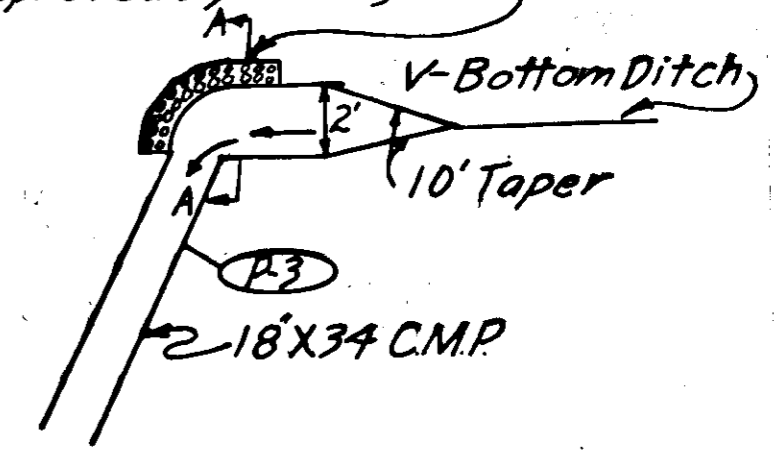
TYPICAL SECTION

Use Select Rubble Rock Approved by the Engineer



Sectional A-A

DITCH STOP CATCH BASIN DETAIL



ITEM	UNIT	QUANTITY
Mobilization	L. S.	All Req'd
Ditch Construction	L. F.	320
18" Pipe Conduit	L. F.	260
36" C.M.P. Inlet	L. S.	1
Rubble Rock	C. Y.	2
Removal of Structures and Obstructions	L. S.	All Req'd

General Note
 1. Construct V-Bottom Ditch to the lines and Grade shown on the plans