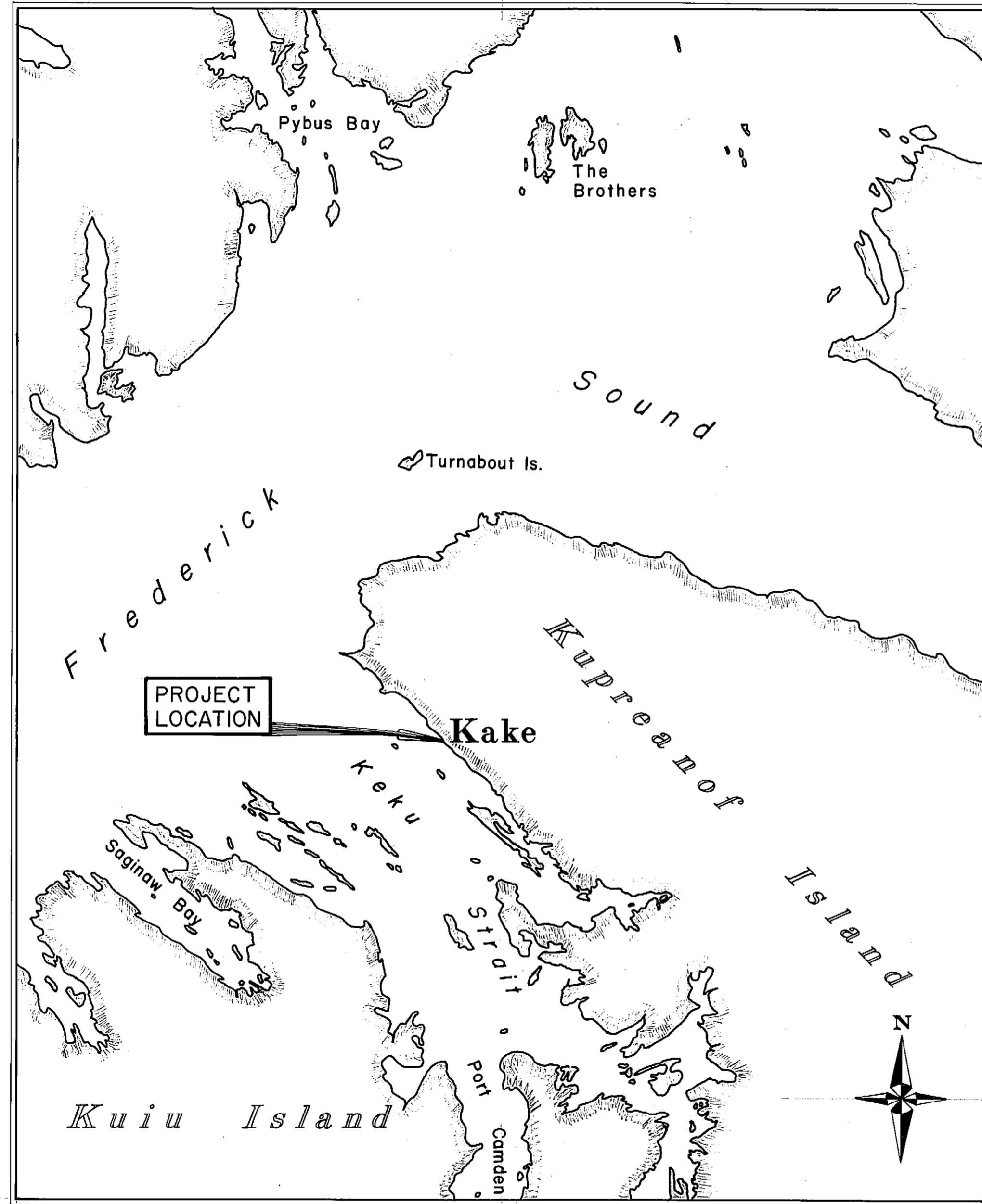
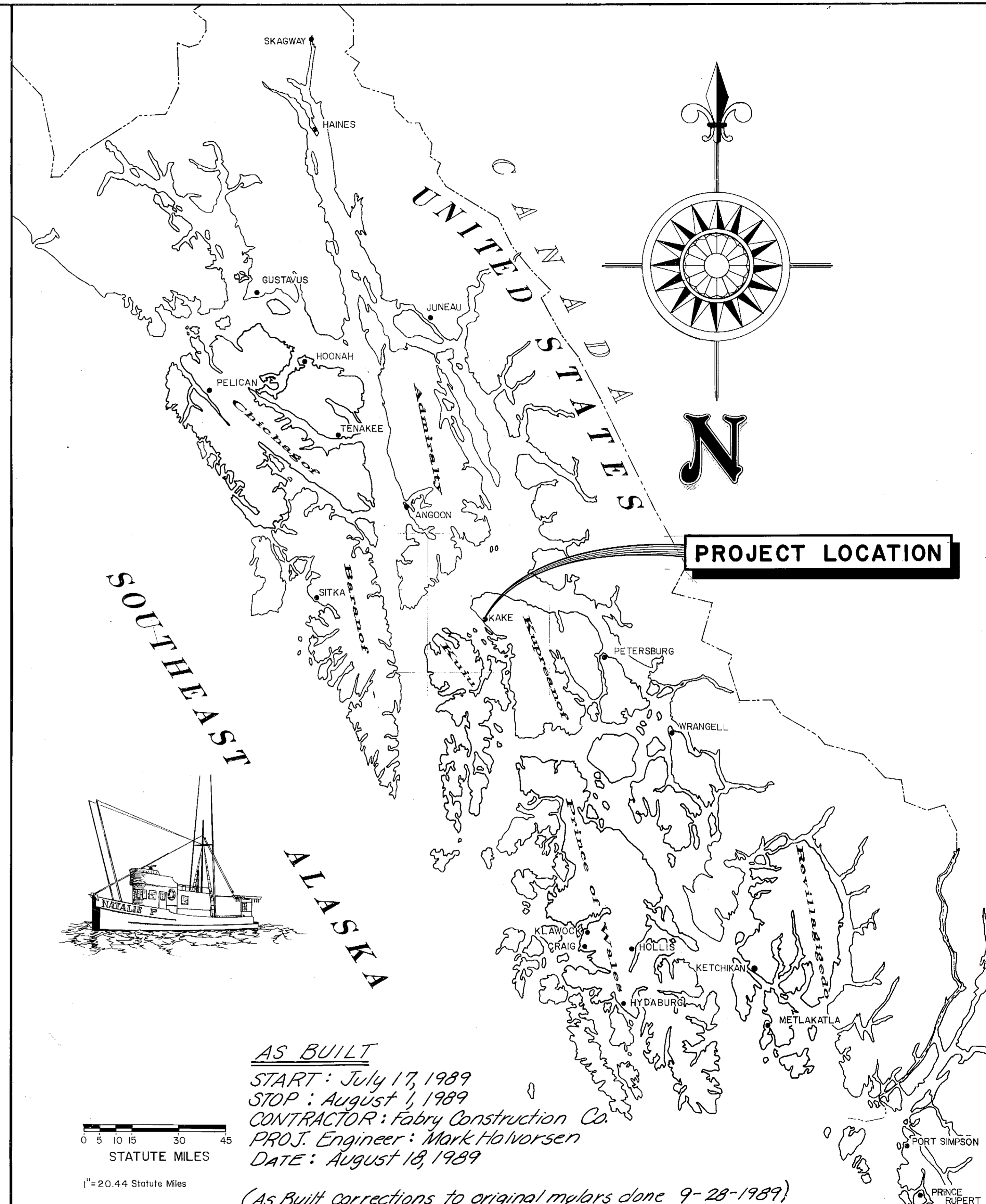


KAKE SEAPLANE FLOAT RECONSTRUCTION / RELOCATION PROJECT No. 69713



VICINITY MAP



**STATE
OF
ALASKA**

**DEPARTMENT OF TRANSPORTATION
& PUBLIC FACILITIES
S.E. REGION DESIGN & CONSTRUCTION**

APPROVED

D. D. Dickmeyer 12-29-88
 Director S.E. D.&C. Date

Recommend
for Approval

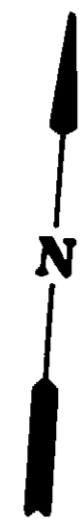
J. Merrill 12-29-88
 Design Chief Date

SHEET 1 of 6

INDEX TO SHEETS

No.	Description	Date	By
1.	TITLE SHEET		
2.	PROJECT LAYOUT		
3.	FLOAT MODIFICATIONS		
4.	6' x 65' STEEL GANGWAY DETAILS		
5.	GANGWAY DETAILS		
6.	GRID DETAILS		

**PROJECT &
FILE NO.**



Store existing Gangway (if Supplemental A is awarded)
Gangway was taken to Ketchikan by Contractor for storage

MLLW = 0

Existing Grid To Be Repaired. See details on sheet 6.

Relocate wind sock to this pile. Reuse existing hardware.

Relocated 10'x 25' Timber Float

Relocated 24'x 36' Timber Seaplane Float

State Furnished New 10'x 50' Timber Float

Existing 10'x 87'-6" Timber Float

New 6'x 65' Steel Gangway (Supplemental A) New installed
or Existing 6'x 50' Steel Gangway

Existing Timber Dock

KEY TO PILE SYMBOLS

- Existing timber pile
- New timber pile
- ⊕ New steel pile - 12 3/4" ϕ x 1/2" wall

PROJECT LAYOUT

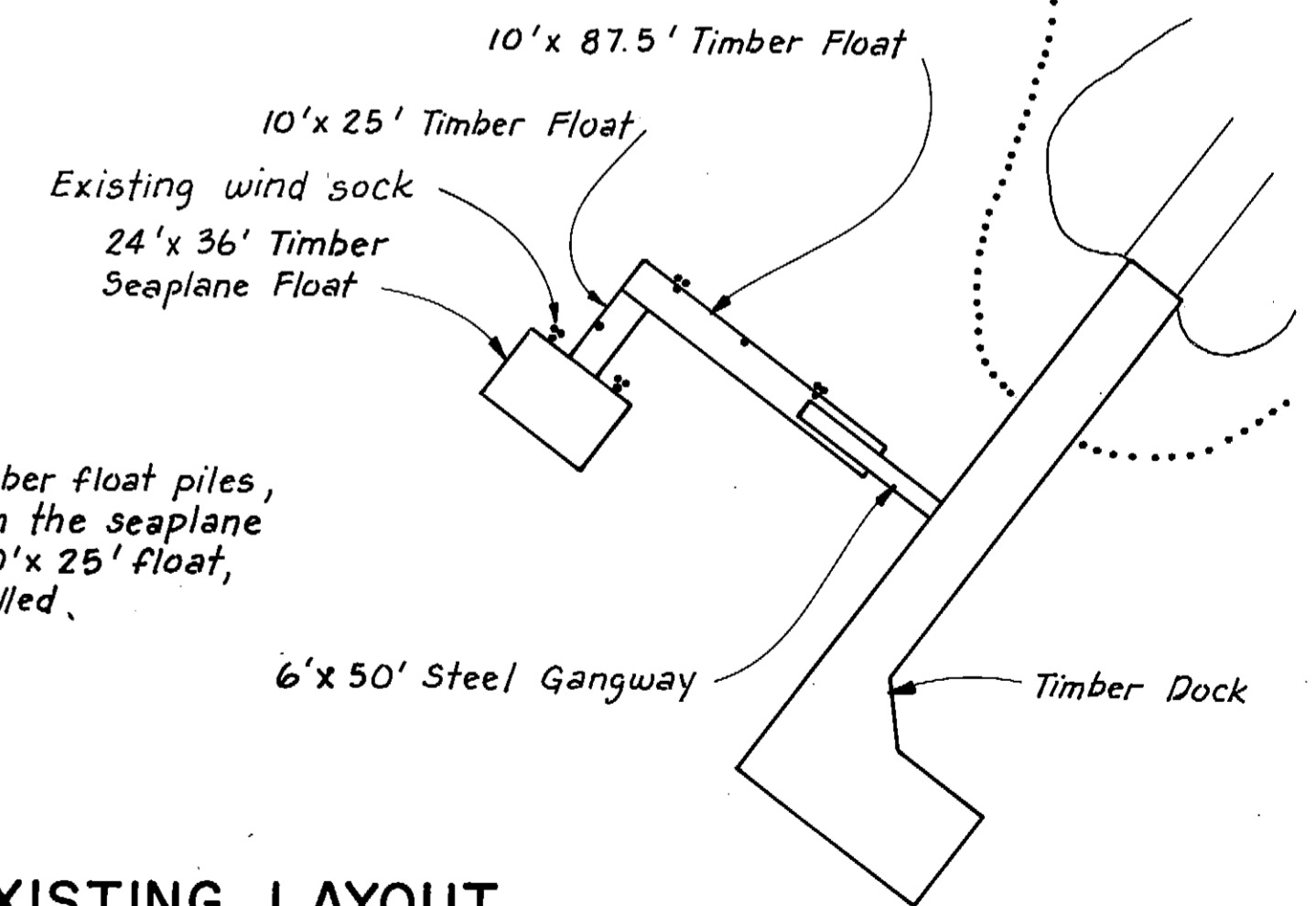
GENERAL NOTES

1. PILES
 - A. Cutoff Elevation - + 27.0' * Steel piles + 22.0' (drove deeper to get additional support laterally & match existing) to get additional support laterally & more bearing)
 - B. DESIGN PENETRATION
 - a. Timber Piles - 15'
 - b. Steel Piles - 20' Timber piles 1/4" windsack + 30' (Left higher to accommodate windsack & signs)
 - c. Cutting Shoes - higher to accommodate windsack & signs) Steel piles to be furnished with APF 0-14000 open end cutting shoe or equal
 - C. PILE SIZE
 - a. Timber piles to be 26" min. tip circumference.
 - b. Steel piles to be 12 3/4" ϕ x 1/2" wall.
2. HORIZONTAL CONTROL is to be established along ϕ of the existing 87'-6" float with all intersections at 90°.
3. VERTICAL CONTROL - All pile cutoffs shall match existing pile cutoff height. See Note 1.A.

*Due to low cutoff, steel cross bar was welded inside top of Pipe Pile opening for safety.

ESTIMATE OF QUANTITIES

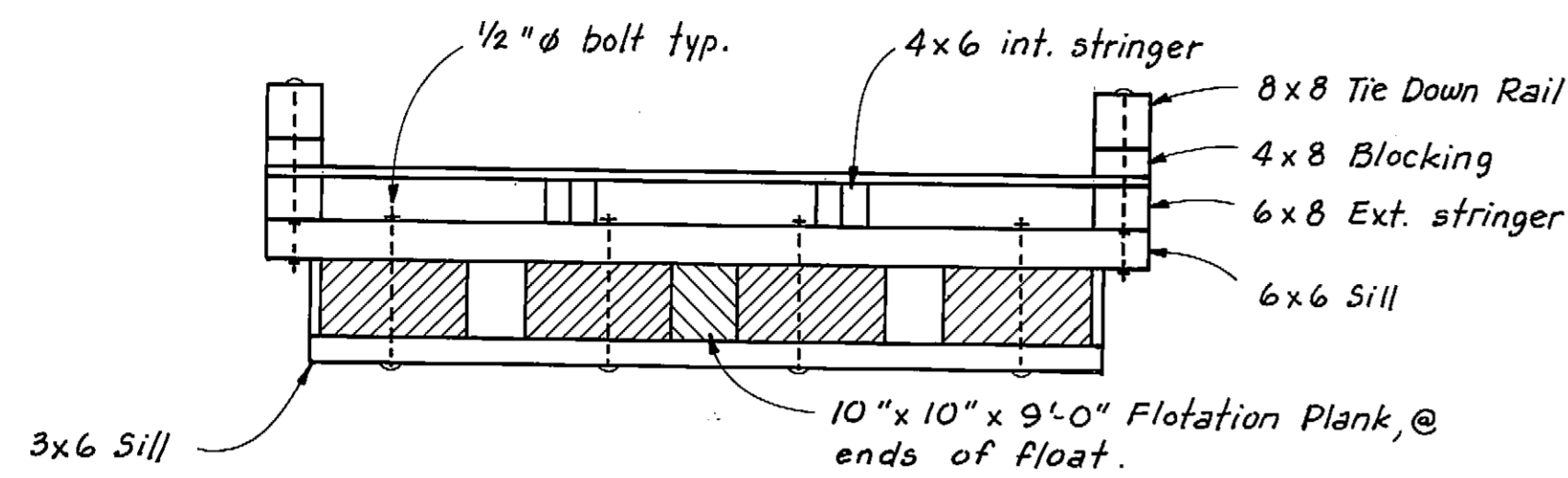
ITEM NO.	ITEM	UNIT	QUANTITY
109	DBE and WBE Adjustments	C.S.	All Req'd.
110	Mobilization and Demobilization	L.S.	All Req'd.
301(1)	Treated Timber Piles, Furnished	L.F.	165'
301(2)	Treated Timber Piles, Driven	Each	3
301(3)	Structural Steel Piles, Furnished	L.F.	120'
301(4)	Structural Steel Piles, Driven	Each	2
306	Grid Repairs	L.S.	All Req'd.
311	Float Relocation	L.S.	All Req'd.
SUPPLEMENTAL A			
302	Structural Steel Gangway, Furnished, Fabricated, and Erected.	L.S.	All Req'd.



NOTE:
Existing timber float piles, (7 total) on the seaplane float and 10'x 25' float, shall be pulled.

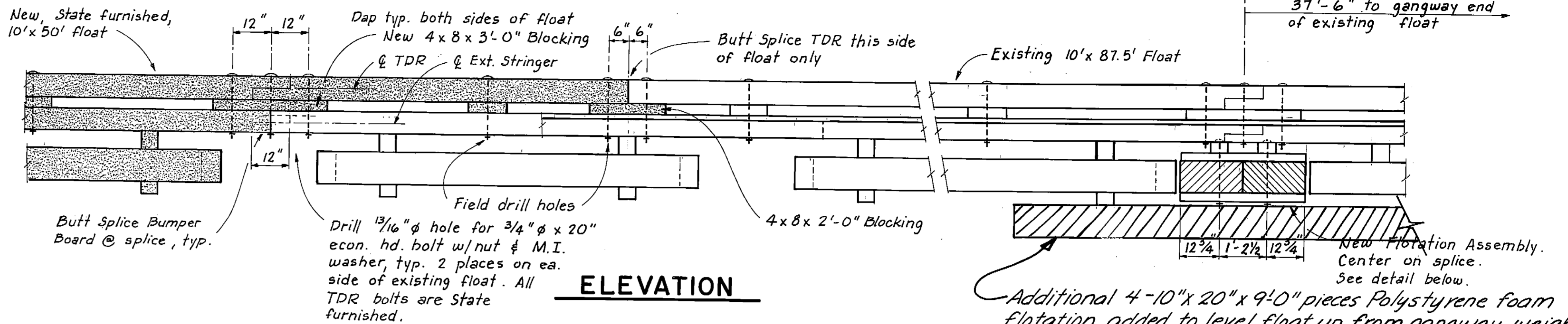
EXISTING LAYOUT

STAMP		DO NOT SCALE THIS DRAWING - USE DIMENSIONS	
		STATE OF ALASKA	
		DEPARTMENT OF TRANSPORTATION AND PUBLIC FACILITIES	
Kake		Alaska	
PROJECT LAYOUT			
DESIGNED JDB	CHECKED TS	DRAWN TS	DATE Sept. 1988
PROJECT NUMBER 69713	SHEET 2 OF 6		



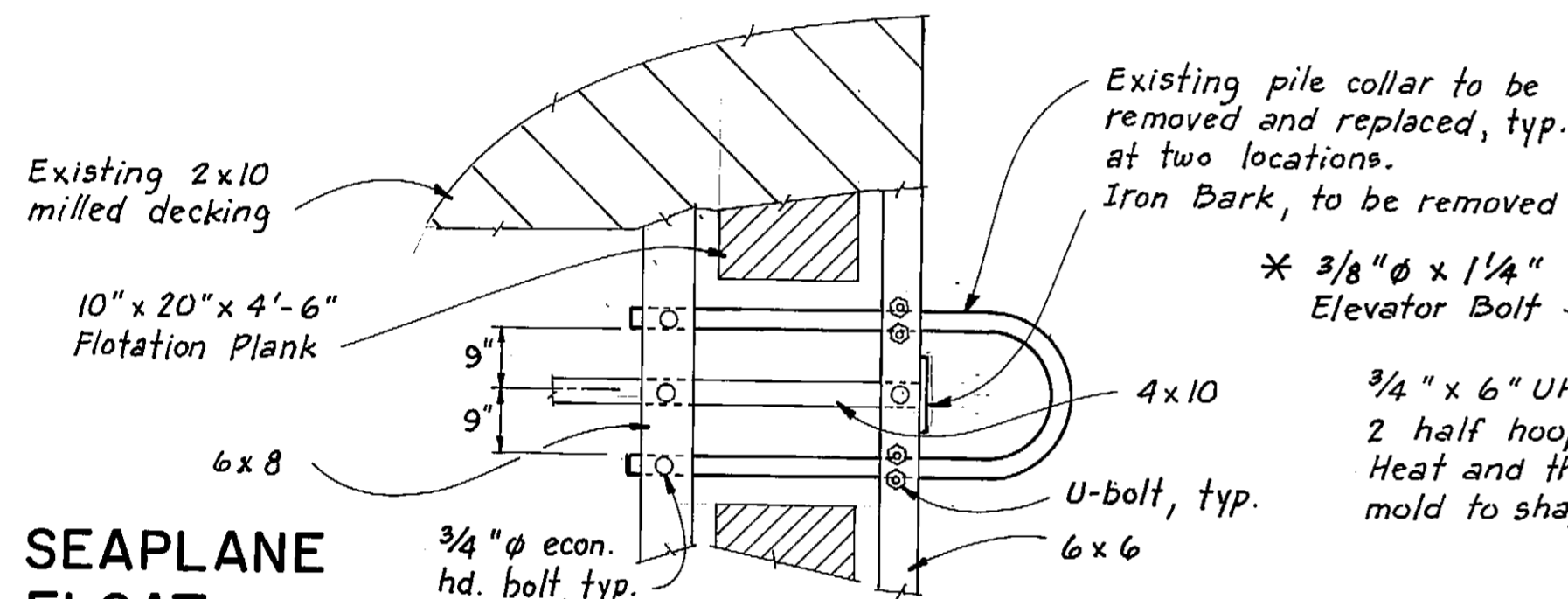
SECTION

NOTE: State furnished float, TDR, and blocking shown shaded.
 NOTE: Dap existing Tie Down Rail and exterior stringers and splice to new (state furnished) float.
 All TDR bolts are State furnished.



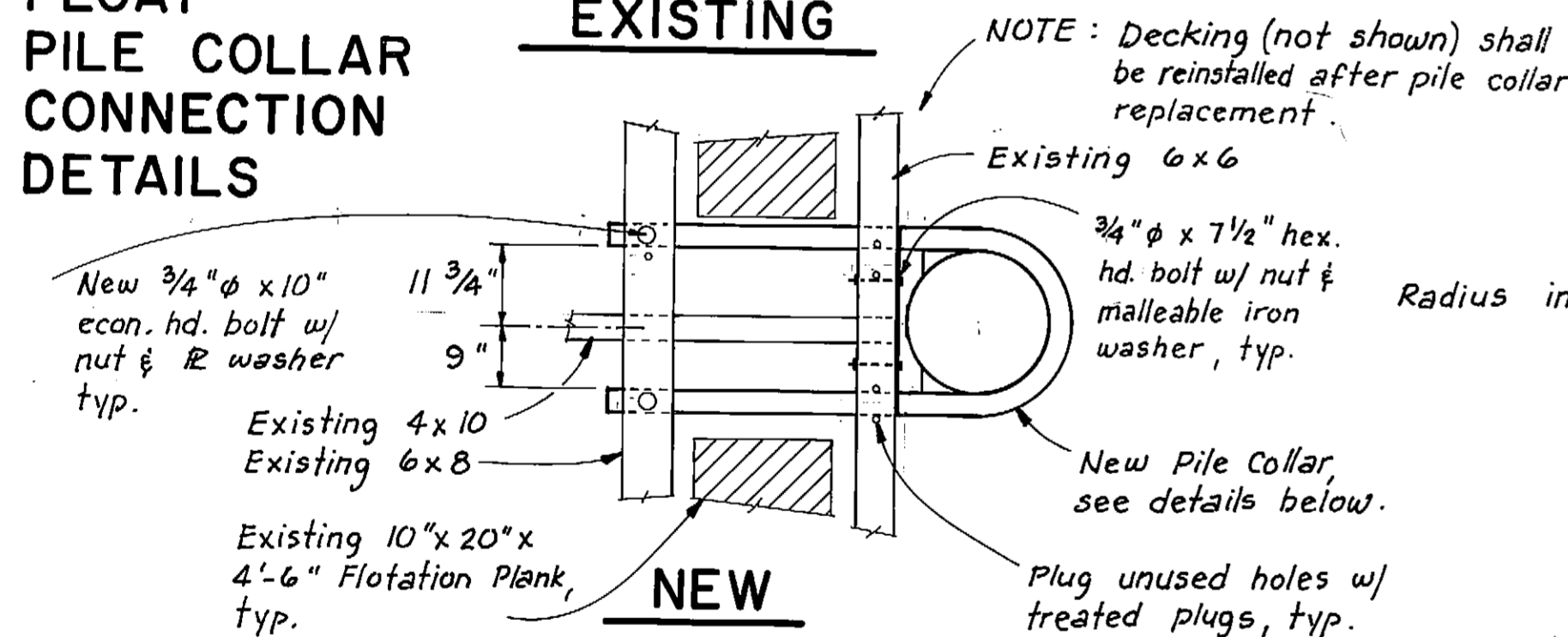
ELEVATION

EXISTING 10' WIDE TIMBER FLOAT



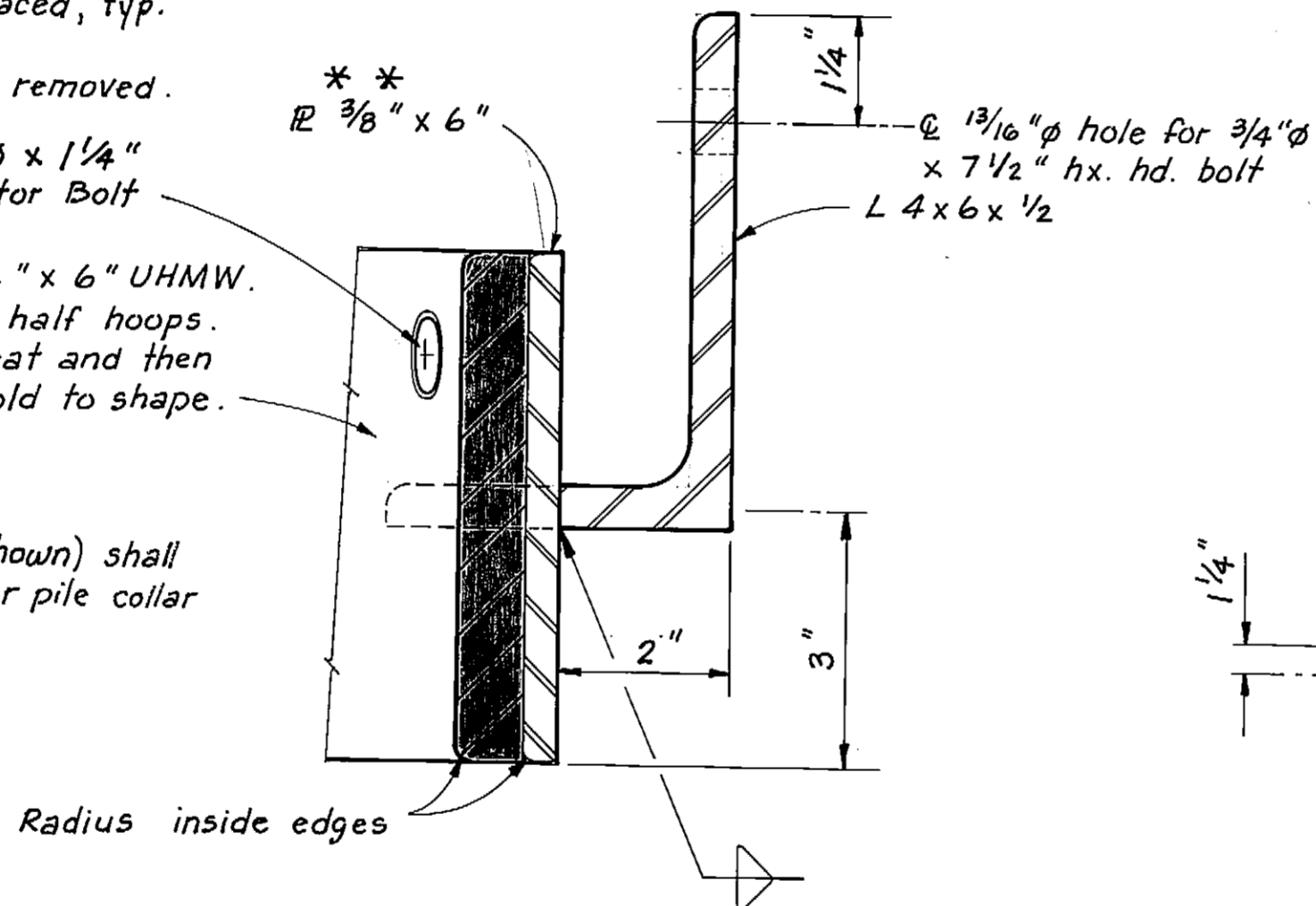
SEAPLANE FLOAT PILE COLLAR CONNECTION DETAILS

EXISTING

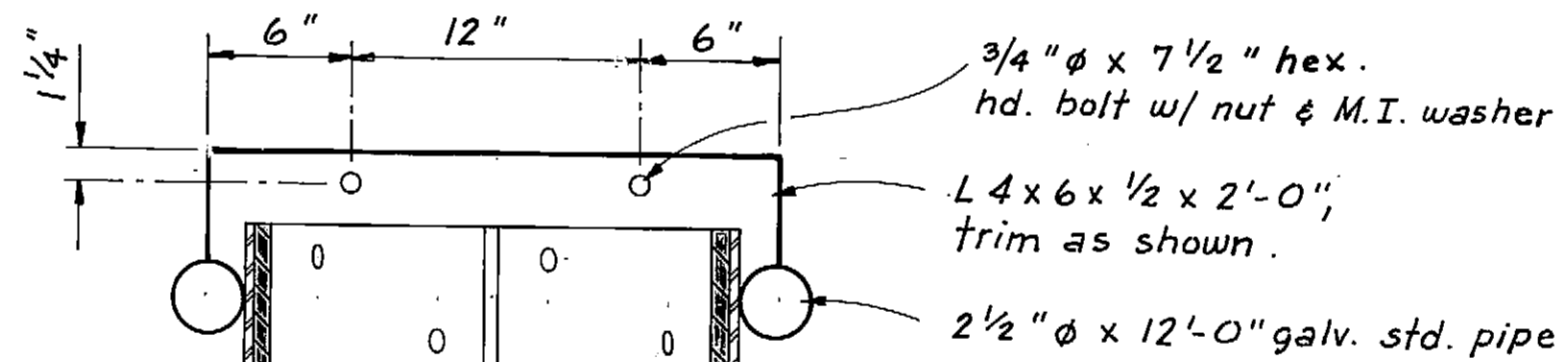


NEW

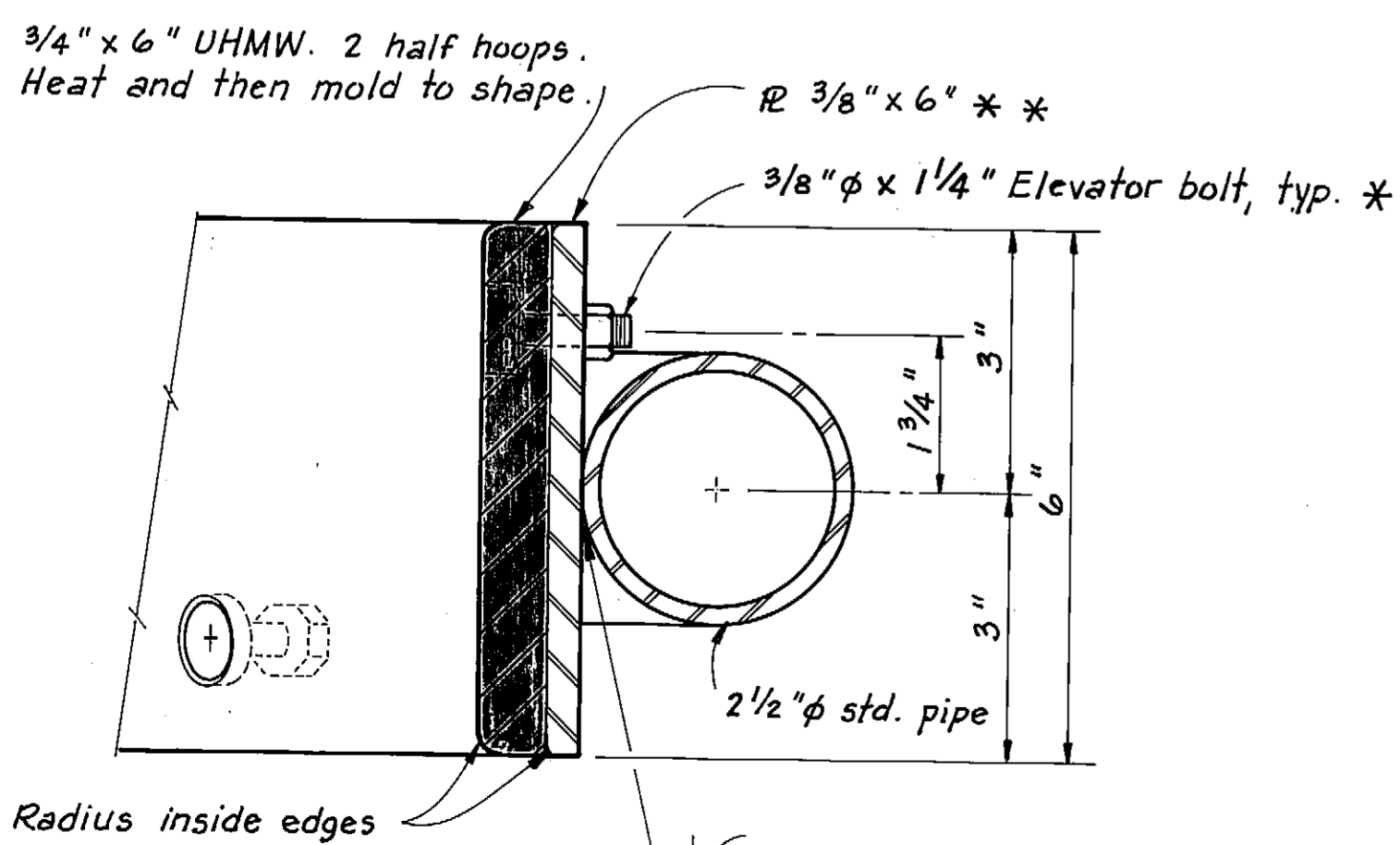
NOTE: Decking (not shown) shall be reinstalled after pile collar replacement.



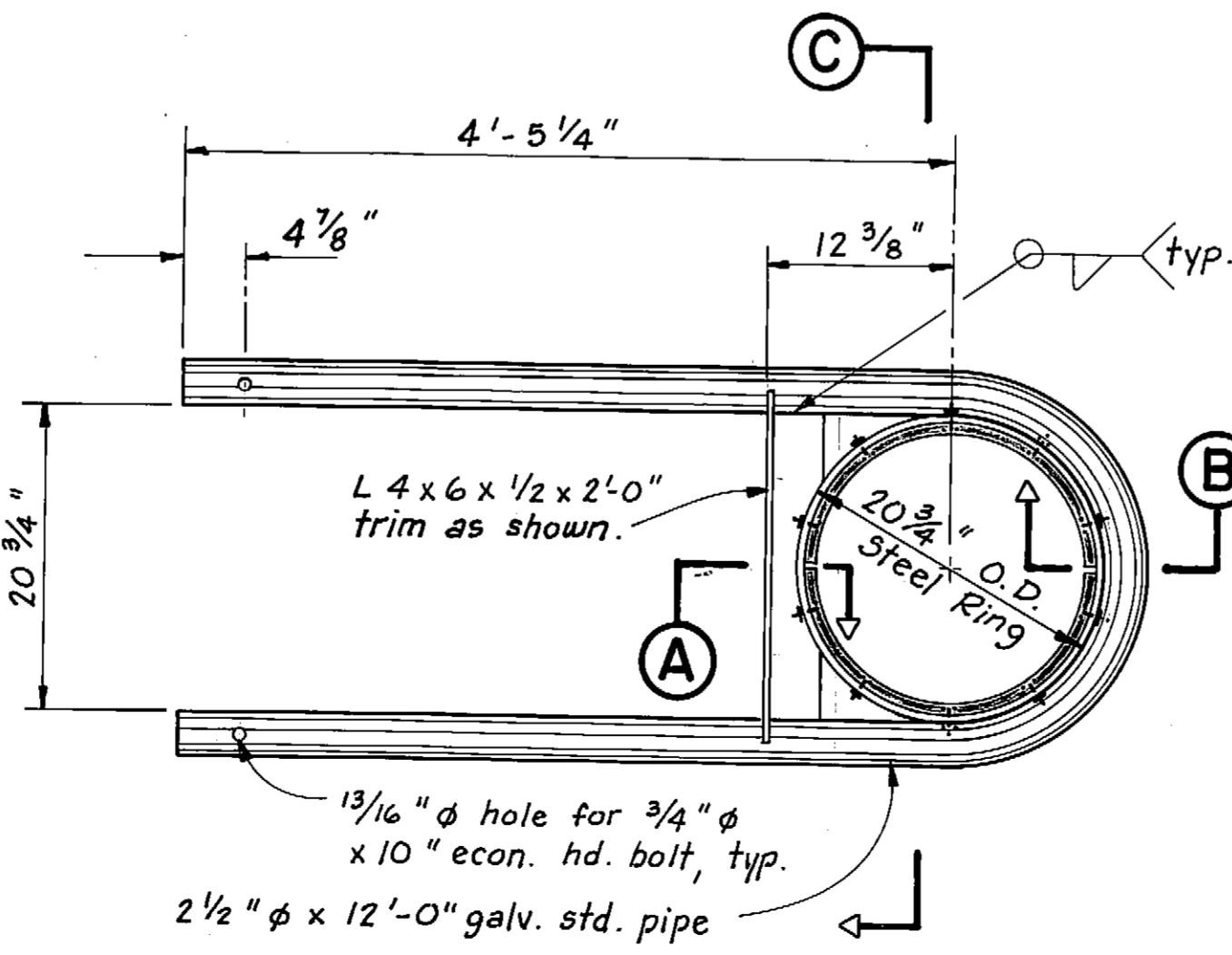
SECTION A



SECTION C

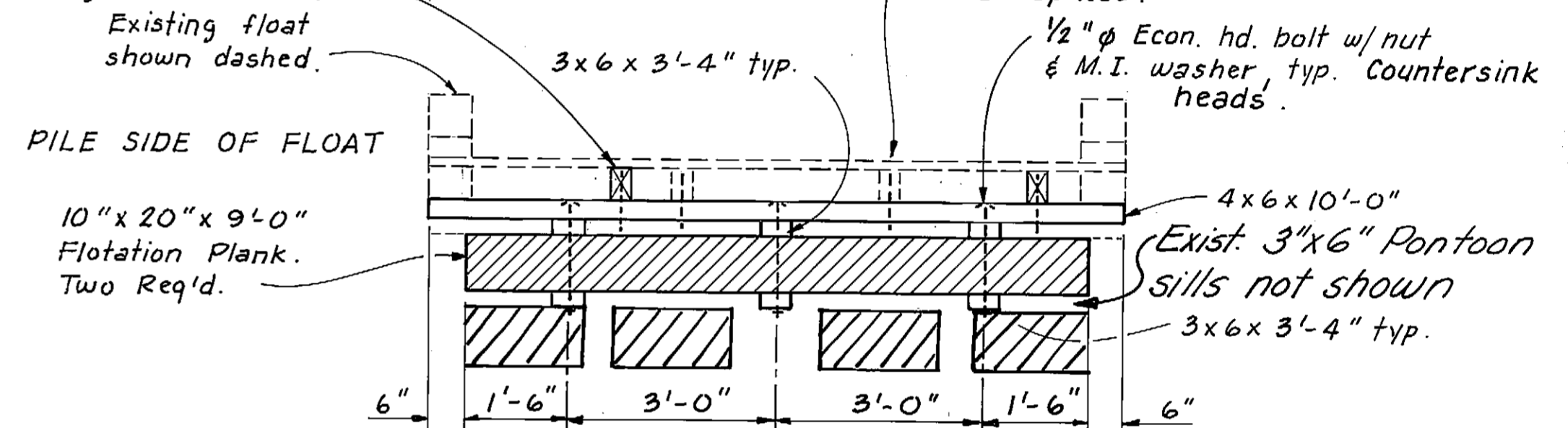


SECTION B



PILE COLLAR DETAIL
(2 Req'd.)

New 4x6x20'-0" Gangway Stringers (2 req'd.) secure to 6x6 Sills w/ 1/2" phi x 10" drifts. Remove and re nail existing decking as necessary.



PILE SIDE OF FLOAT

FLOTATION ASSEMBLY DETAIL

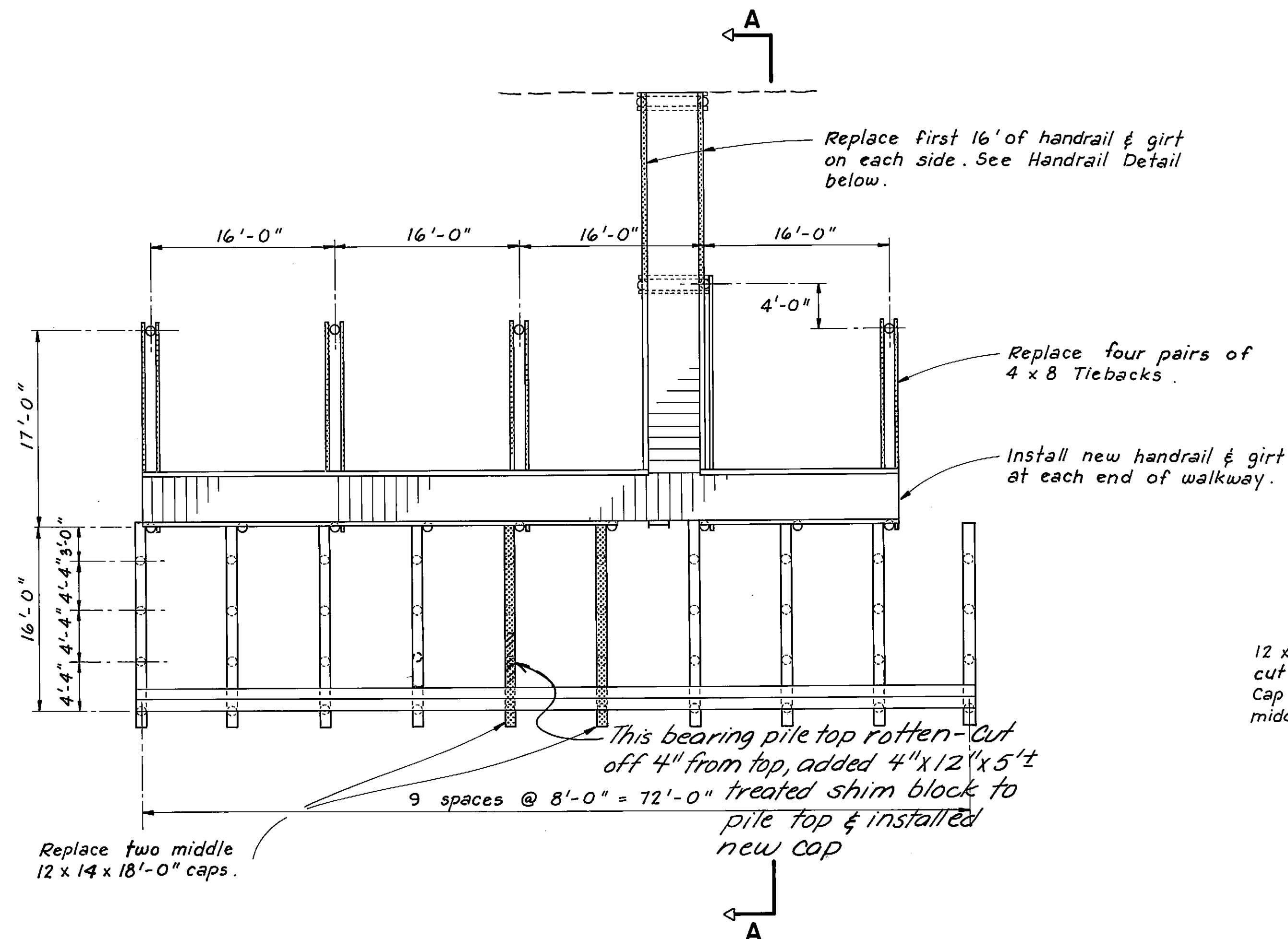
Note: The flotation assembly and gangway stringers are included in Supplemental A. This work is only required if the new 6' x 65' gangway is installed.
New Gangway Installed

Note: New gangway connected to approach at same location as old one removed. Due to new gangway having to miss pile in inside Pile Collar in gangway float, it was necessary to angle the gangway on the float enough to miss it as the new gangway is longer than the one replaced by 15 feet. The gangway guiderails on the float are angled to fit the gangway.

* Countersink Elevator bolt 3/8". Space 5 bolts per half collar alternately high and low. Space bolts evenly to allow for rotating the UHMW liner.
 ** All welds on inside of steel ring shall be ground smooth.

NOTE: Pile collars to be shipped with UHMW liners attached.

STAMP		DO NOT SCALE THIS DRAWING - USE DIMENSIONS			
		STATE OF ALASKA			
		DEPARTMENT OF TRANSPORTATION AND PUBLIC FACILITIES			
Kake		Alaska			
FLOAT MODIFICATIONS					
DESIGNED	TS	CHECKED	JDB	DRAWN	TS
PROJECT NUMBER	69713	SHEET		3	OF 6



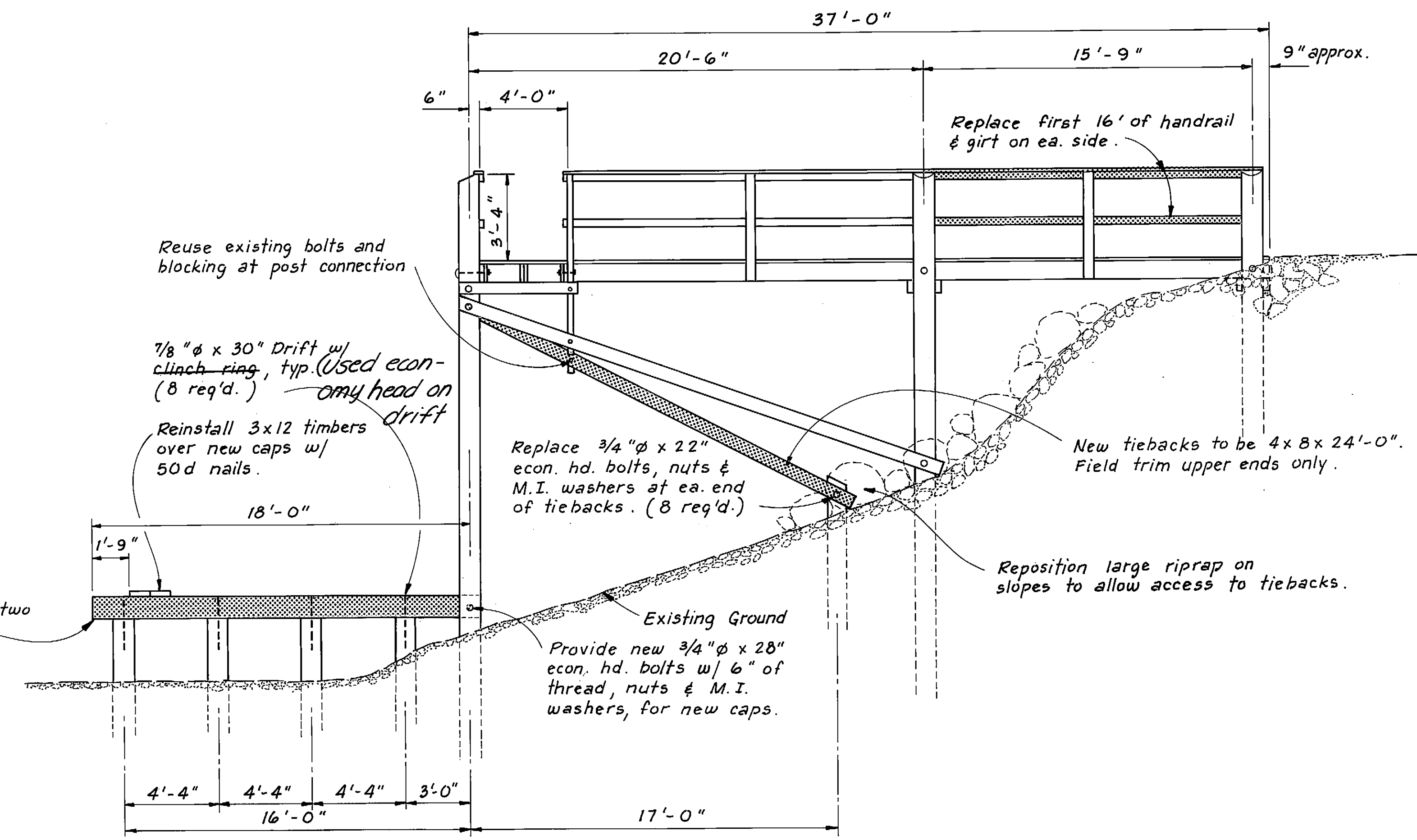
PLAN

SCALE



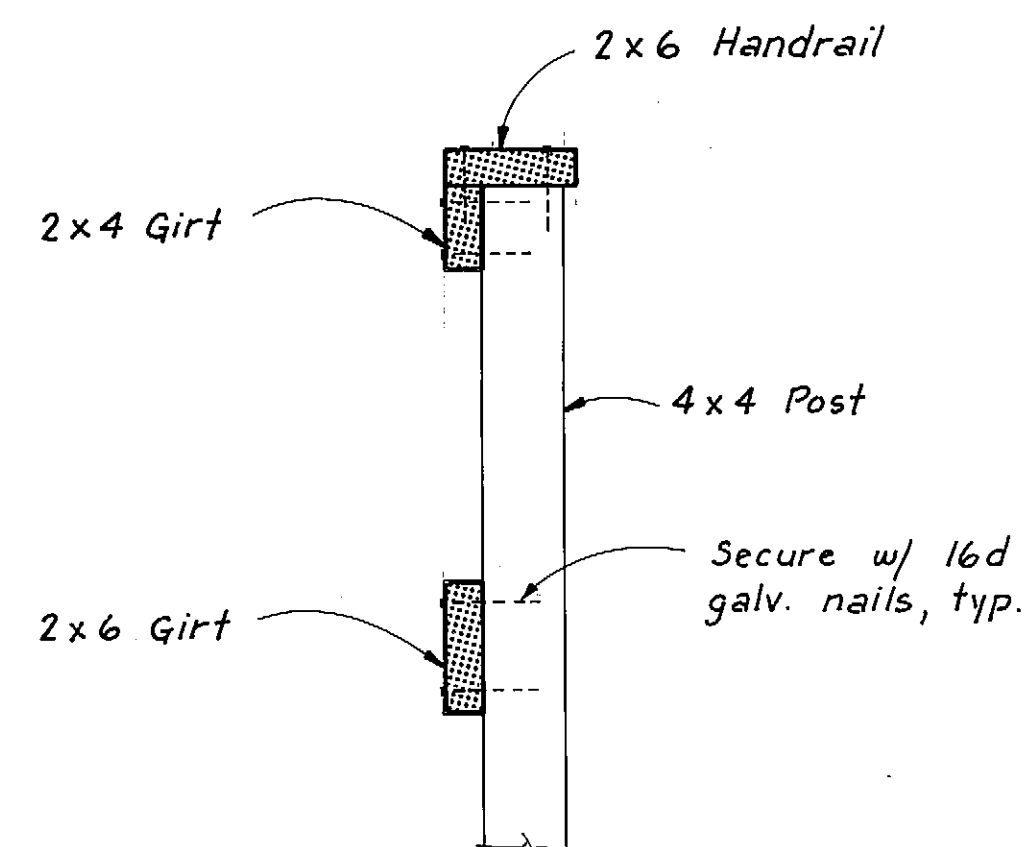
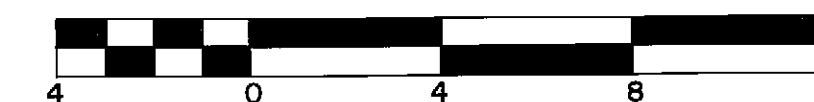
GRID DETAILS

NOTE: Shaded items to be replaced.



SECTION A-A

SCALE

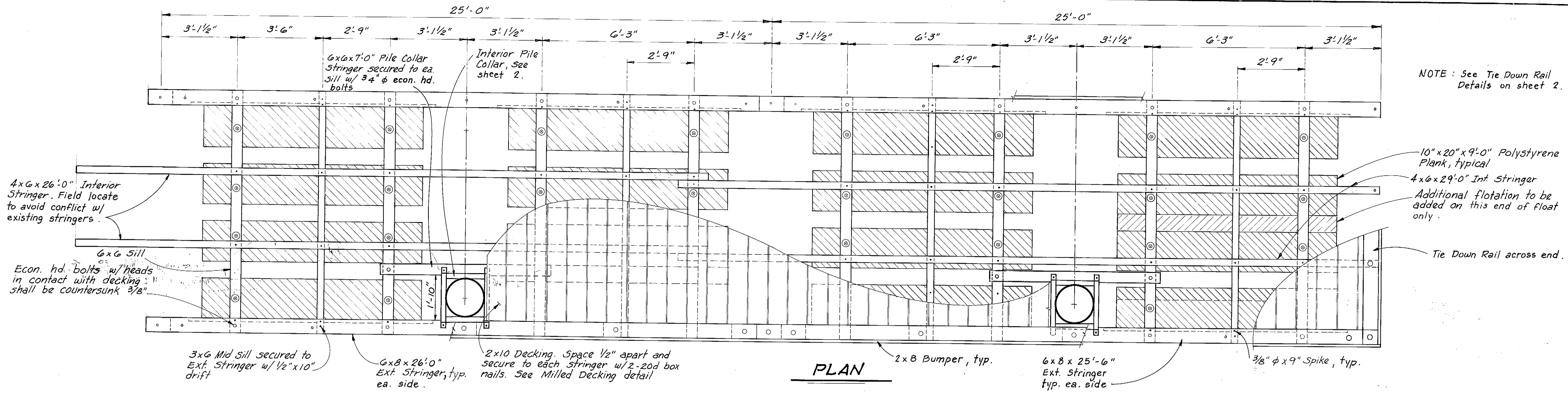


HANDRAIL DETAIL

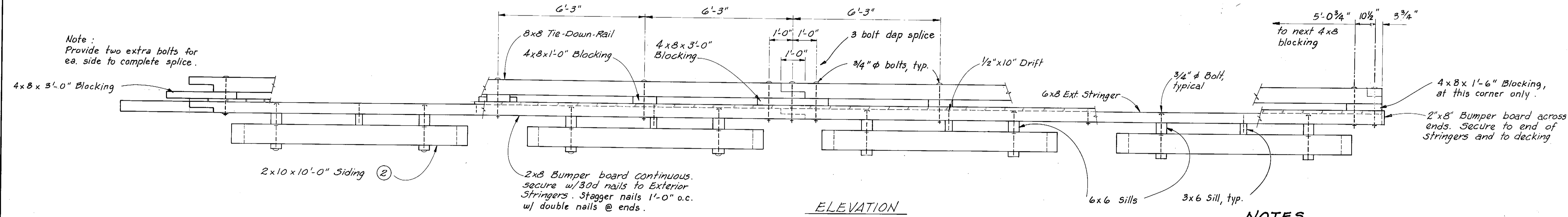
N.T.S.

NOTE: Equipment operation below MHW is limited to unvegetated areas unless equipment is timber pad supported. This is to comply with Corps of Engineers Best Management Practices.

	DO NOT SCALE THIS DRAWING - USE DIMENSIONS			
	STATE OF ALASKA DEPARTMENT OF TRANSPORTATION AND PUBLIC FACILITIES			
Kake		Alaska		
GRID DETAILS				
DESIGNED JDB	CHECKED TS	DRAWN TS	DATE	
PROJECT NUMBER 69713	SHEET 6 OF 6			

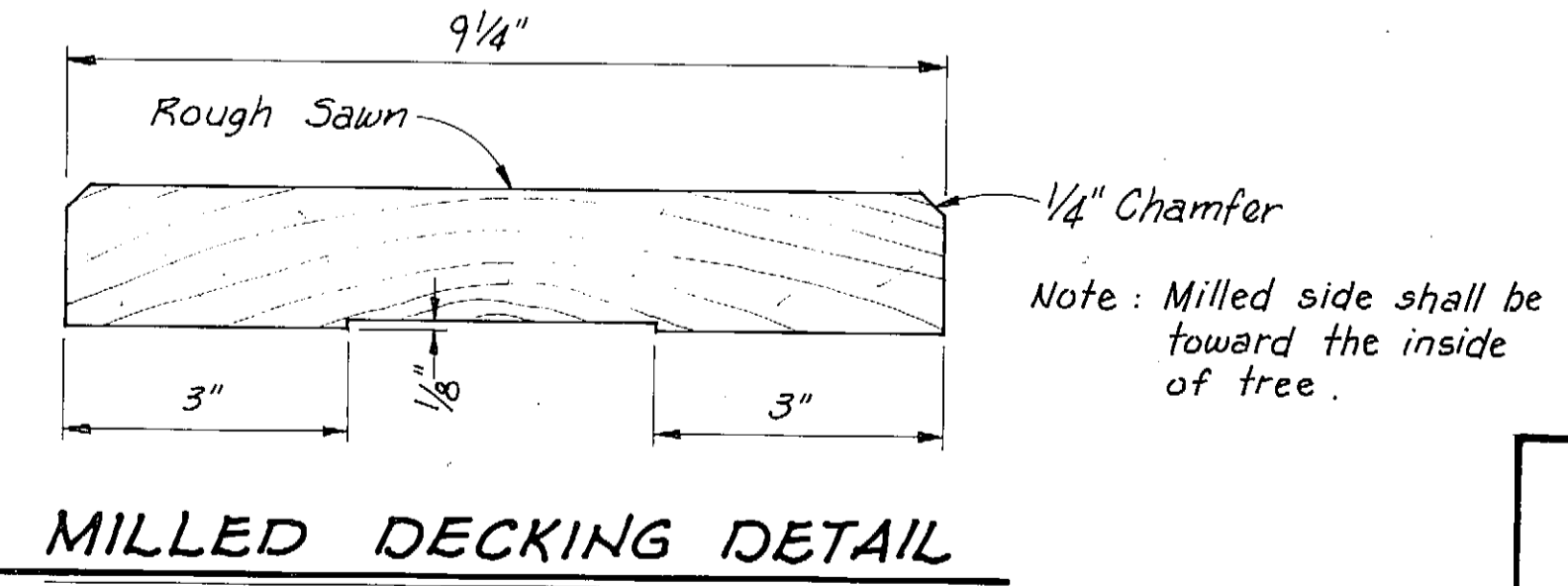
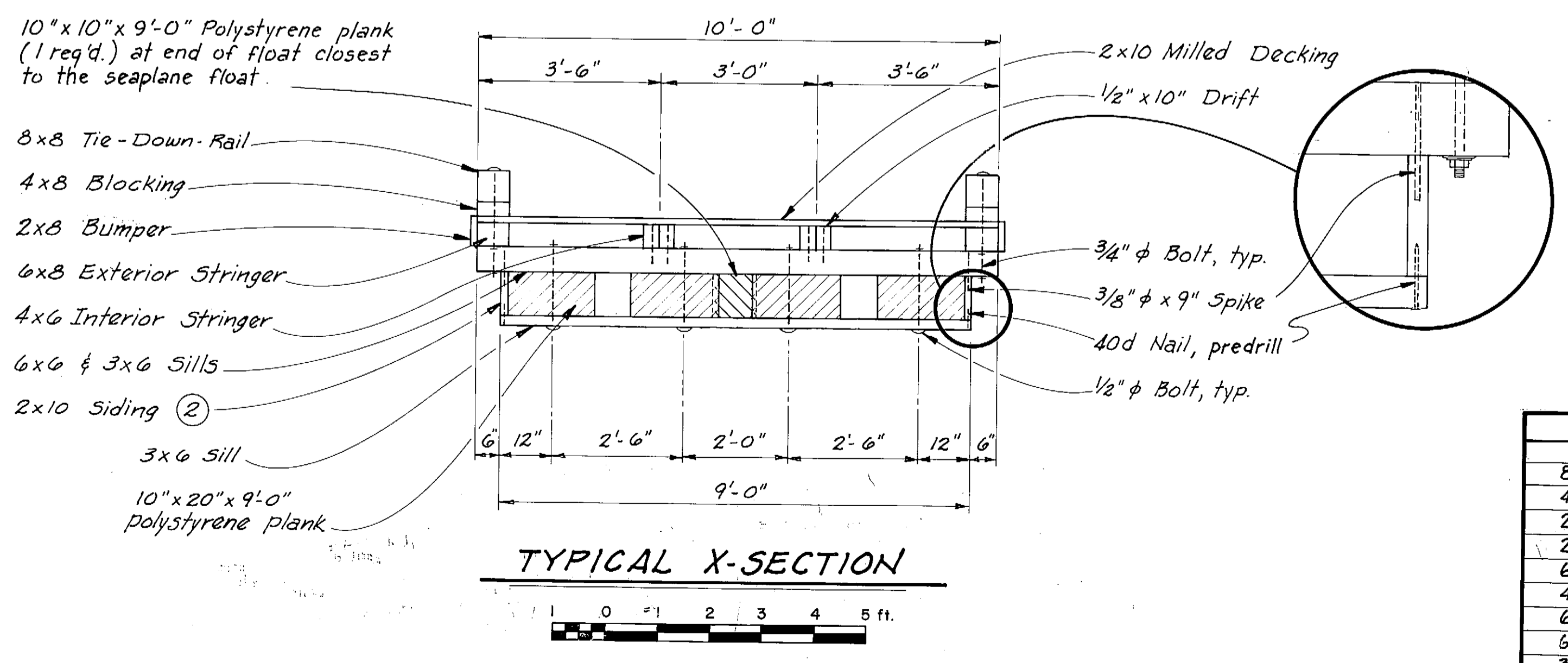


NOTE: See Tie Down Rail Details on sheet 2.



NOTES

- ① Countersink all bolt heads facing decking 3/8".
- ② 2x10 Siding is a 2x12 (545) cut to 1 1/2"x10 1/4".
- ③ All timber to be 5-4-5 except decking (Milled 5152E) and 2x10 siding.
- ④ All bolts are 3/4" φ economy head type w/ lugs unless noted otherwise.
- ⑤ Provide five (5) additional 2x10 milled decking timbers.



DRILLING SCHEDULE	
8x8 Tie-Down-Rails	Shop drill all holes.
4x8 Blocking	Shop drill all holes.
2x10 Decking	Field drill ends if req'd.
2x8 Bumpers	Field drill ends if req'd.
6x8 Exterior Stringers	Shop drill all holes
4x6 Interior Stringers	Shop drill all holes
6x6 Collar Stringers	Field drill for 5/8" φ holes
6x6 & 3x6 Sills	Shop drill all holes *
3x6 Lower Sills	Shop drill all holes

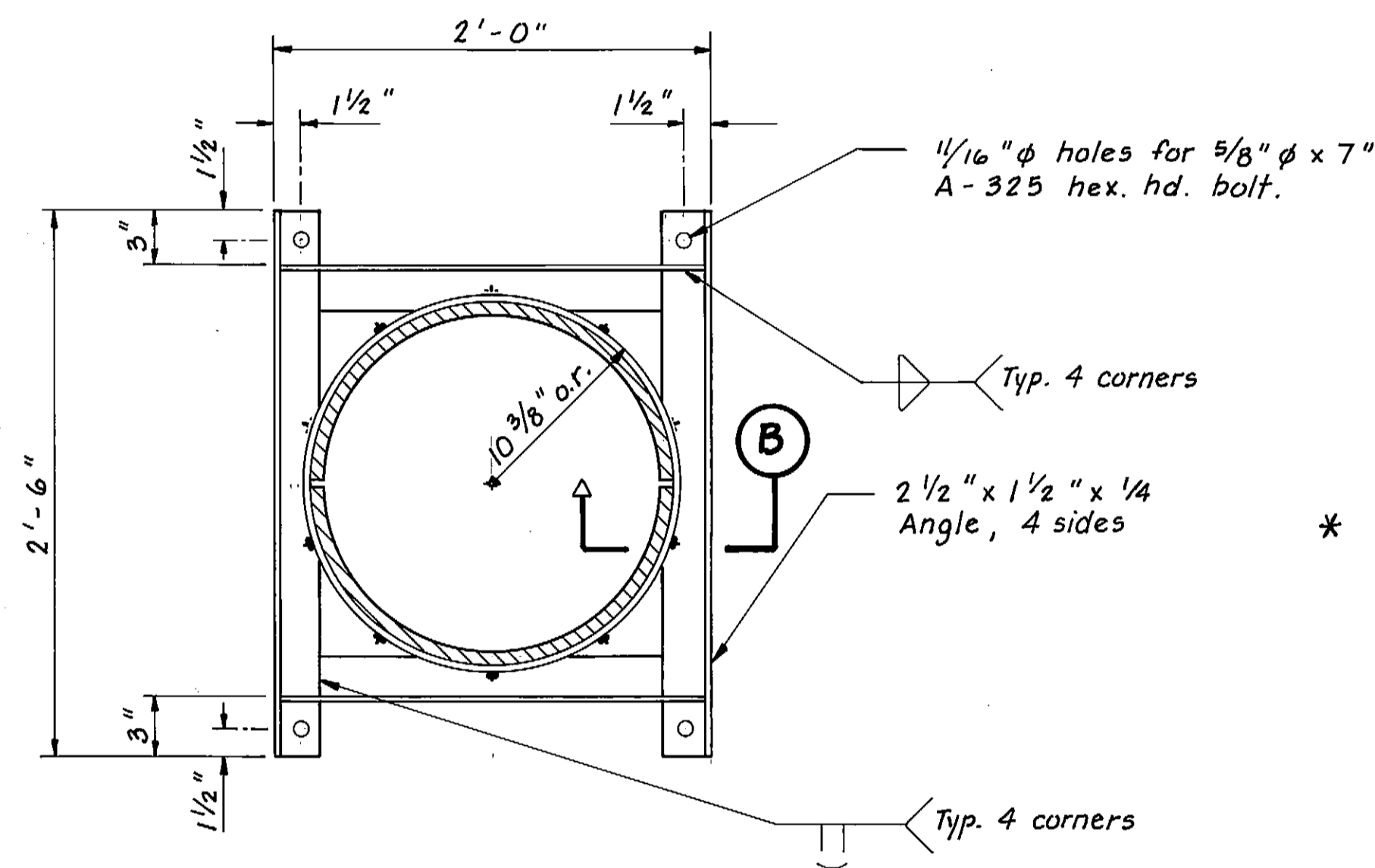
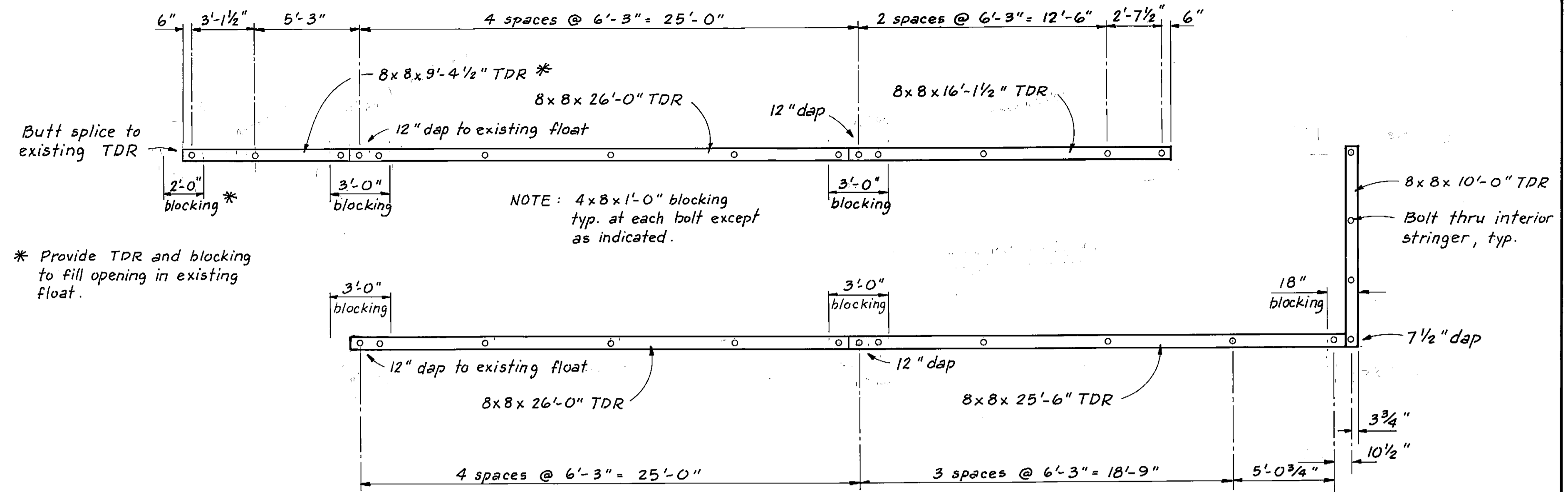
* Except holes for int. Stringers.

KAKE

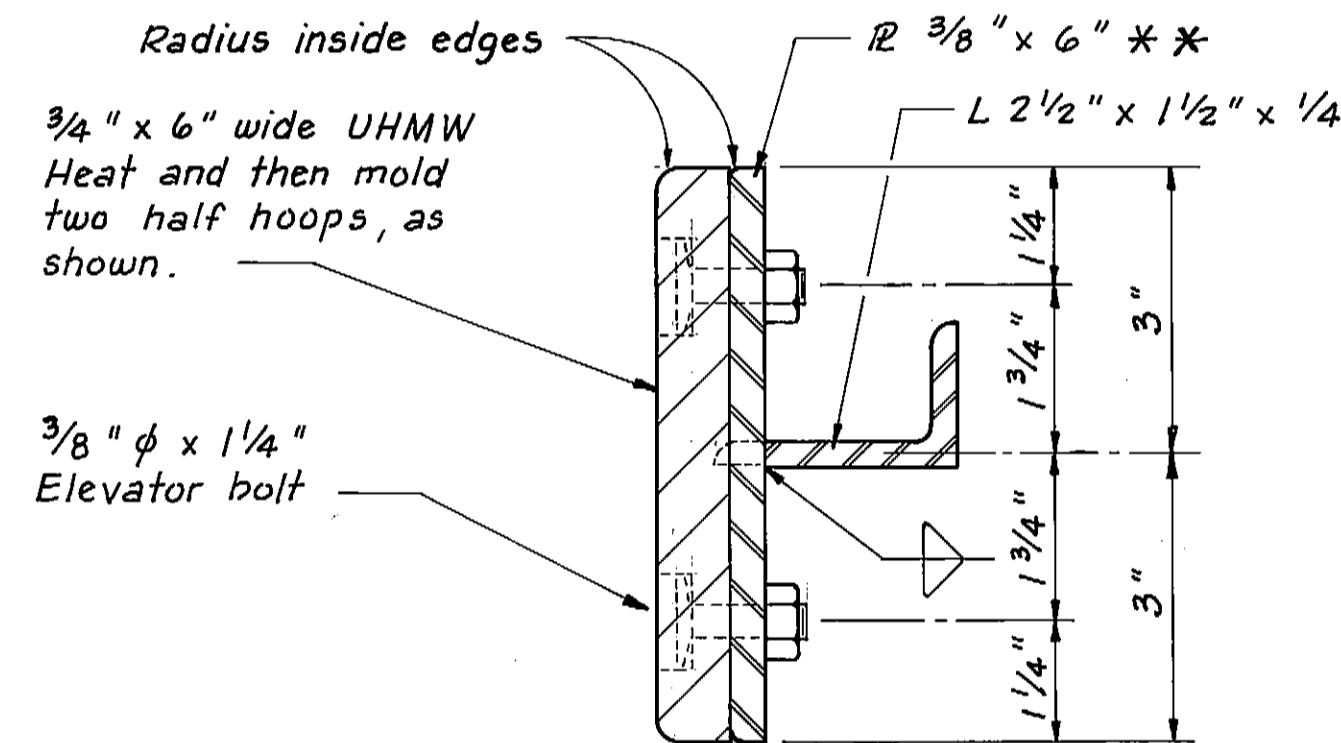
SEAPLANE FLOAT RECONSTRUCTION

PROJECT NO. 69713

DO NOT SCALE THIS DRAWING - USE DIMENSIONS	
STATE OF ALASKA DEPARTMENT OF TRANSPORTATION AND PUBLIC FACILITIES	
KAKE	ALASKA
10' x 50' TIMBER FLOAT	
DESIGNED <u>JDB</u>	CHECKED _____
PROJECT NUMBER <u>69713</u>	SHEET <u>1</u> OF <u>2</u>
DATE <u>SEPT. 1988</u>	

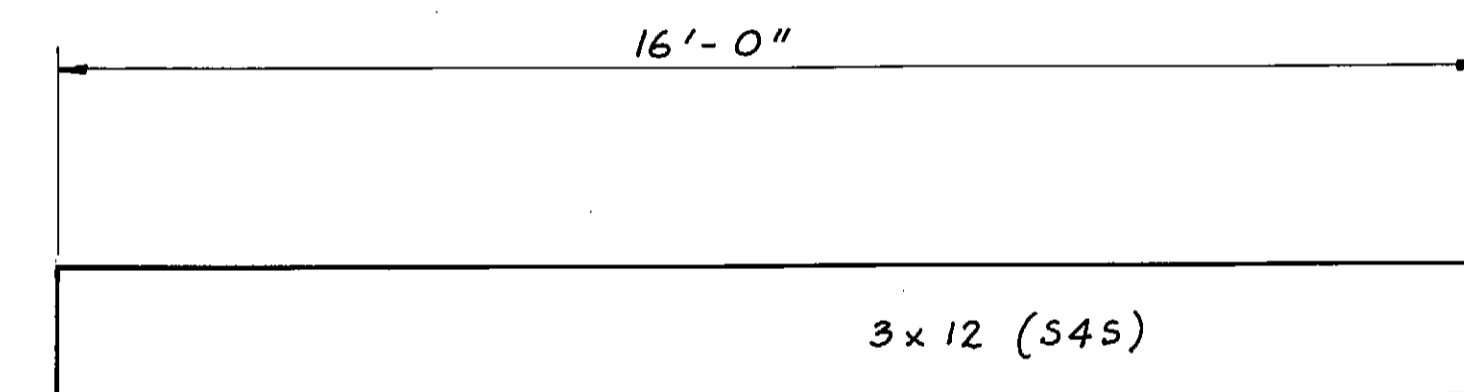


INTERIOR PILE COLLAR
(two Req'd.)



SECTION B

TIE DOWN RAIL DETAILS

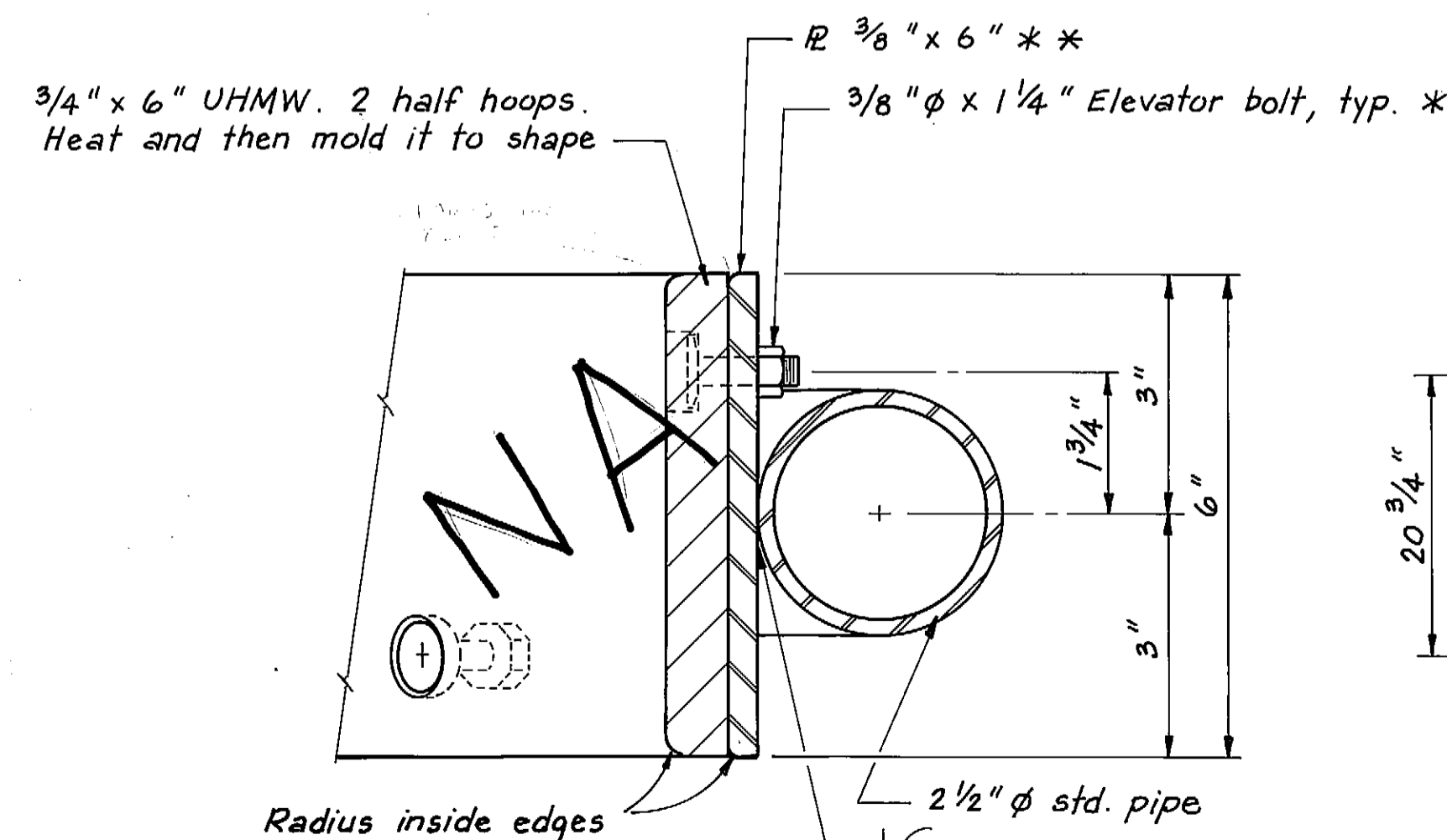


GRID WALKWAY PLANKS
N.T.S.
(10 Req'd.)

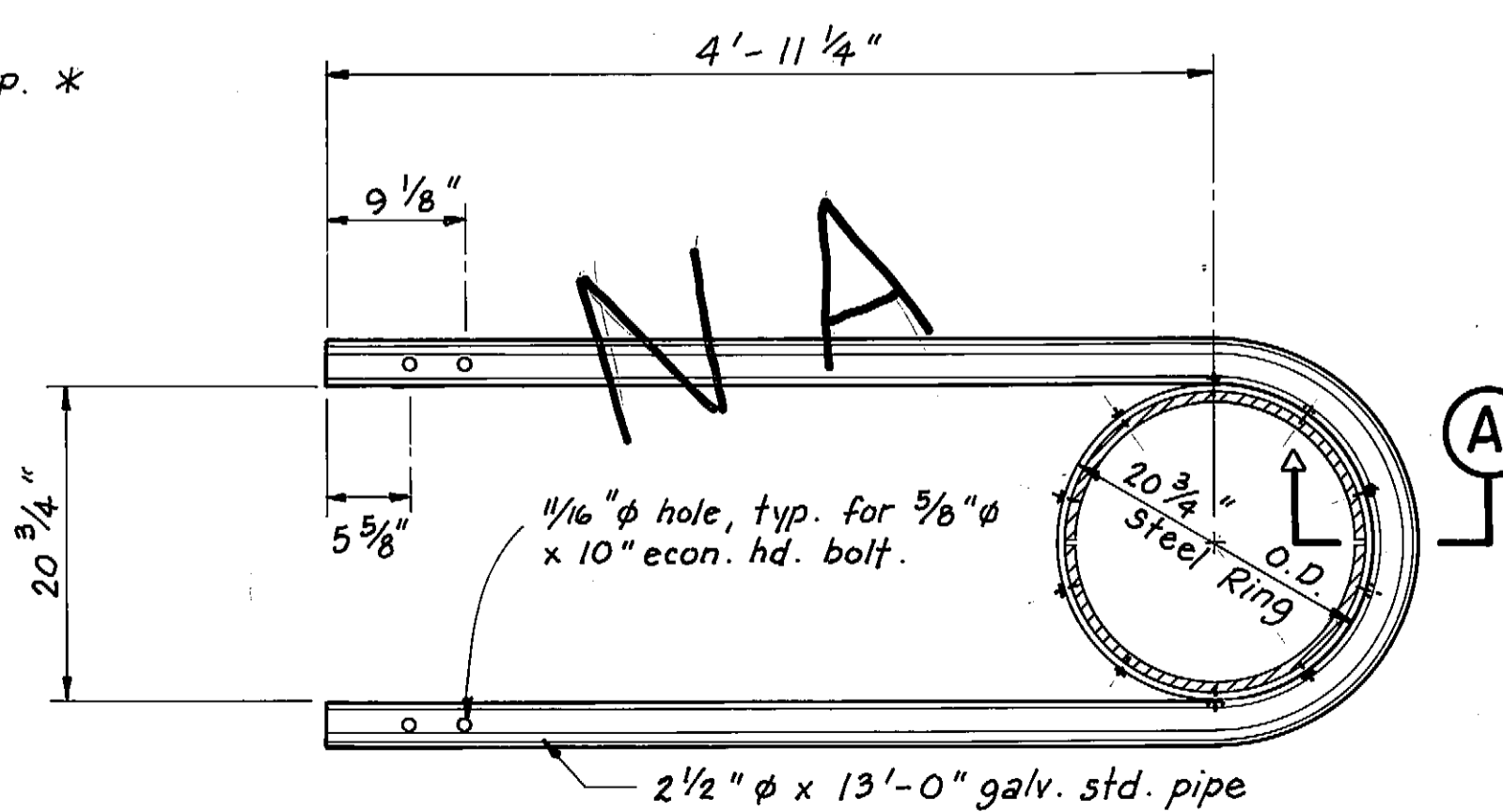
* Countersink Elevator Bolt 3/8".
Space 5 bolts per half collar
alternately high and low. Space
bolts evenly to allow for rotating
the UHMW liner.

**
All welds on inside of steel
ring shall be ground smooth.

NOTE: Pile collars to be shipped
with UHMW liners attached.



SECTION A



STEEL PIPE PILE COLLAR
(Zero Req'd.)

	DO NOT SCALE THIS DRAWING - USE DIMENSIONS			
	STATE OF ALASKA DEPARTMENT OF TRANSPORTATION AND PUBLIC FACILITIES			
KAKE		ALASKA		
MISC. DETAILS				
DESIGNED TS	CHECKED JDB	DRAWN TS	DATE SEPT. 1988	
PROJECT NUMBER 69713	SHEET 2 OF 2			