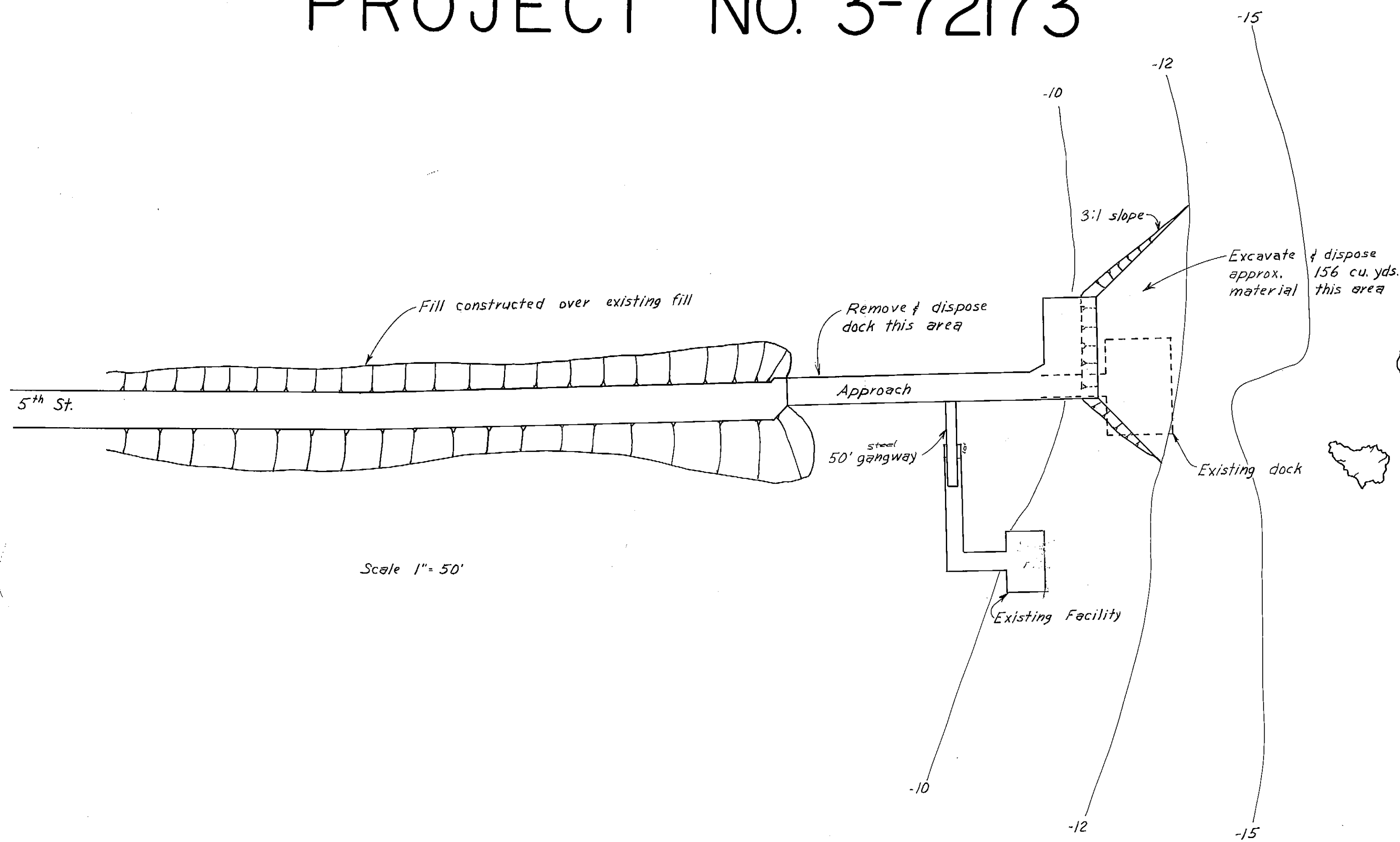
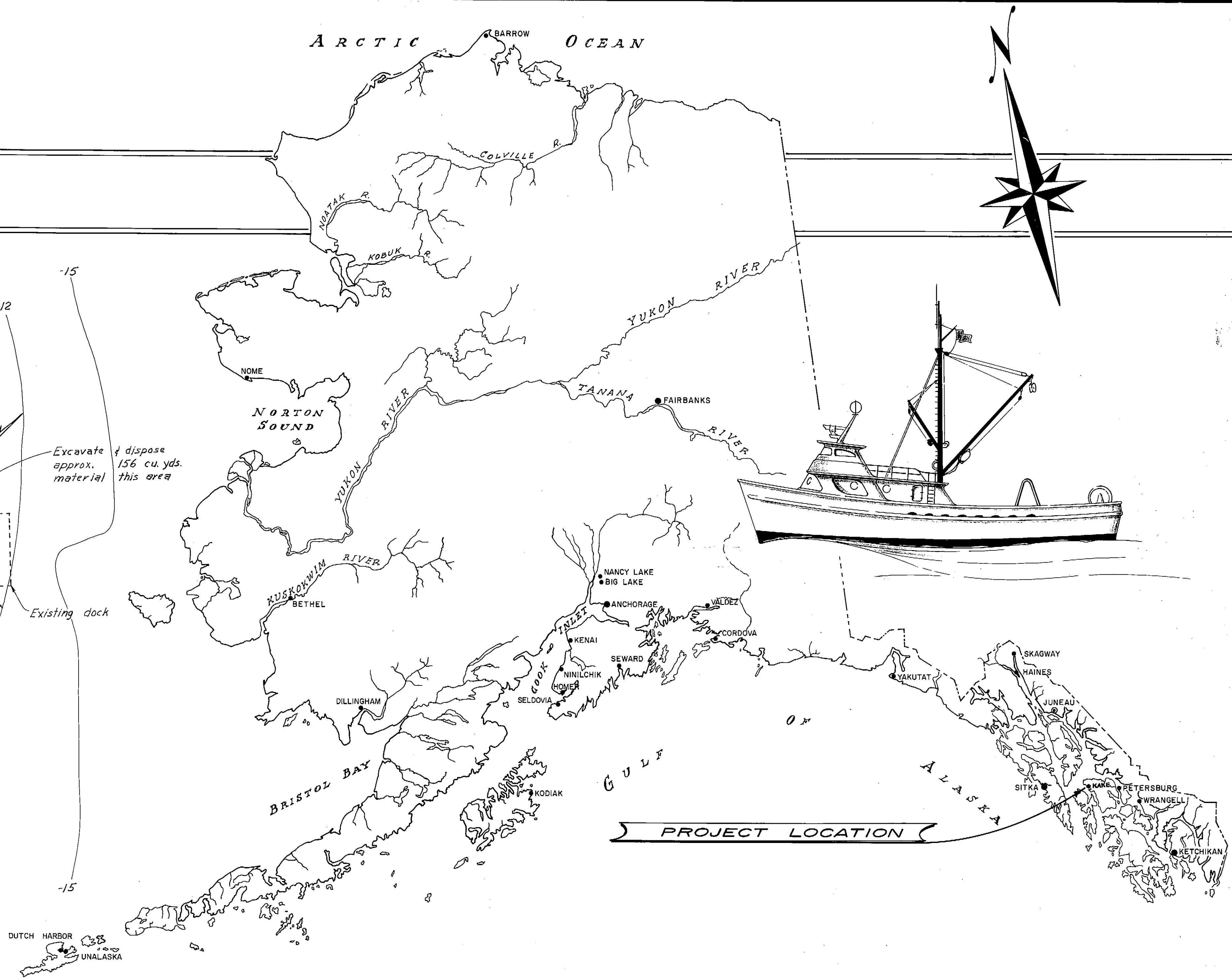


KAKE APPROACH & DOCK PROJECT NO. 3-72173



Scale 1" = 50'



WORK SUMMARY

This project shall consist of the removal & disposal of approx. 10,000 S.F. of existing approach & dock, the construction of 405 L.F. of 22' wide roadway and 4592 S.F. of approach & dock structure, the excavation & disposal of approx. 156 cu. yds. of material.

AS BUILT JAN 72

STATE OF ALASKA DEPARTMENT OF PUBLIC WORKS
DIVISION OF WATER & HARBORS

INDEX TO SHEETS

1	TITLE & LOCATION	
2	ROADWAY CONSTR. DET'LS	
3	APPROACH " "	
4	DOCK " "	

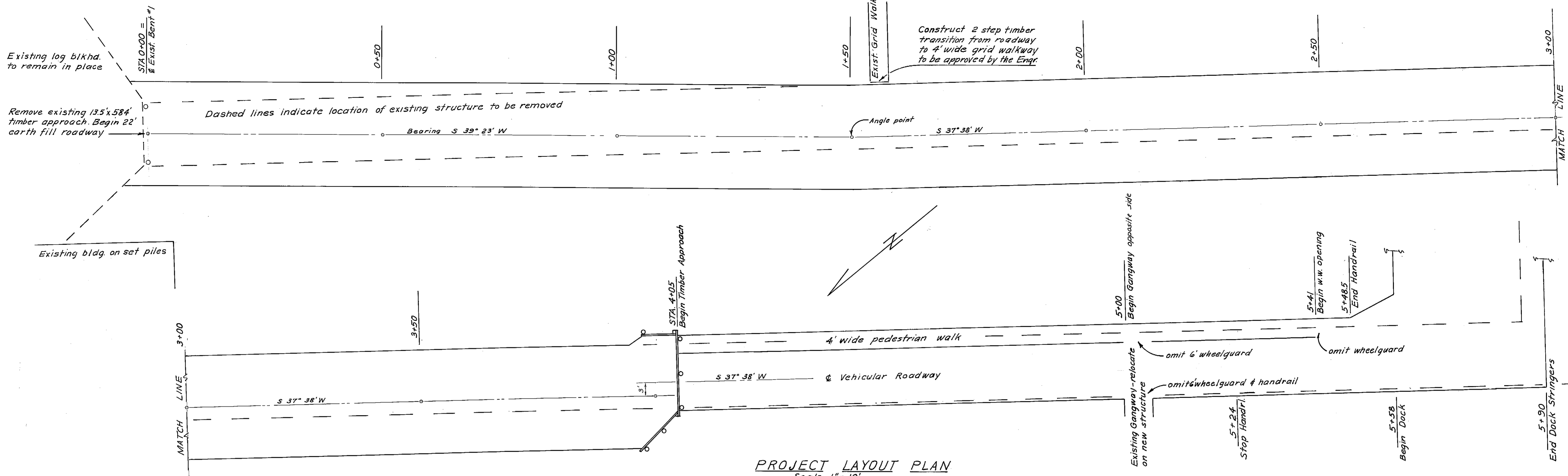
APPROVED

[Signature]

COMMISSIONER

DATE *May 27, 1971*

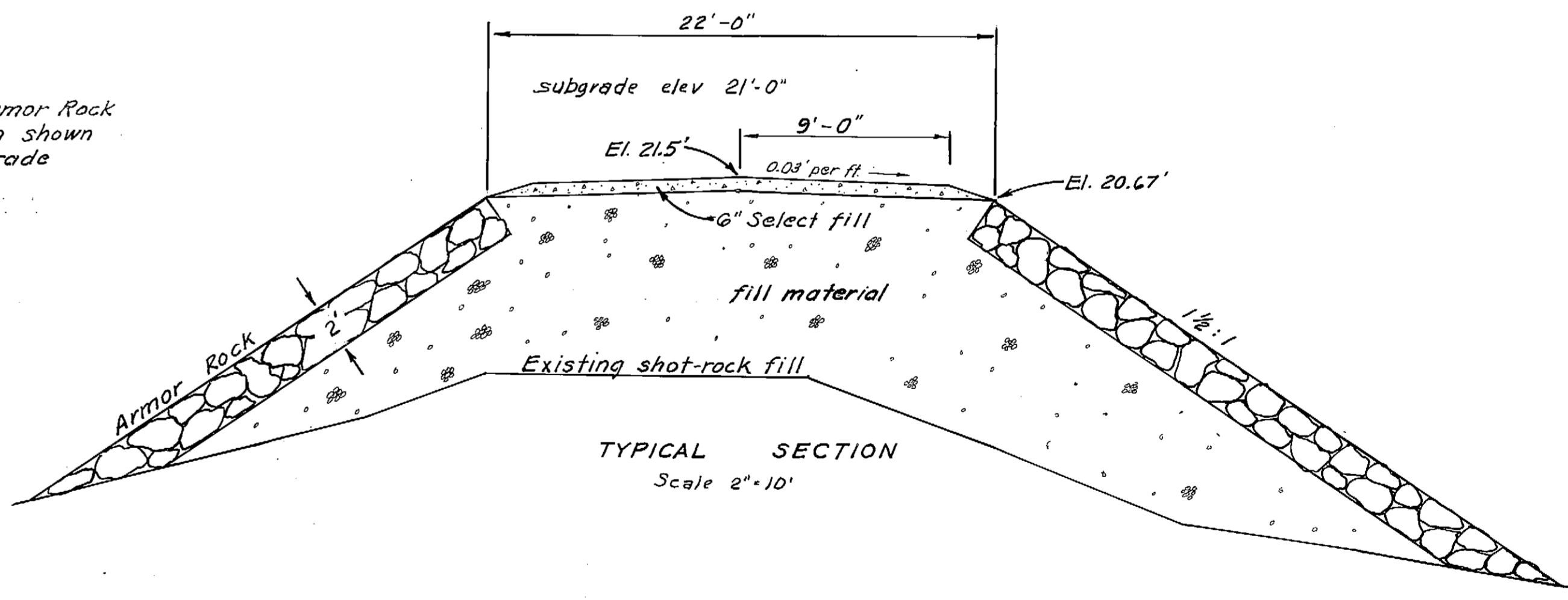
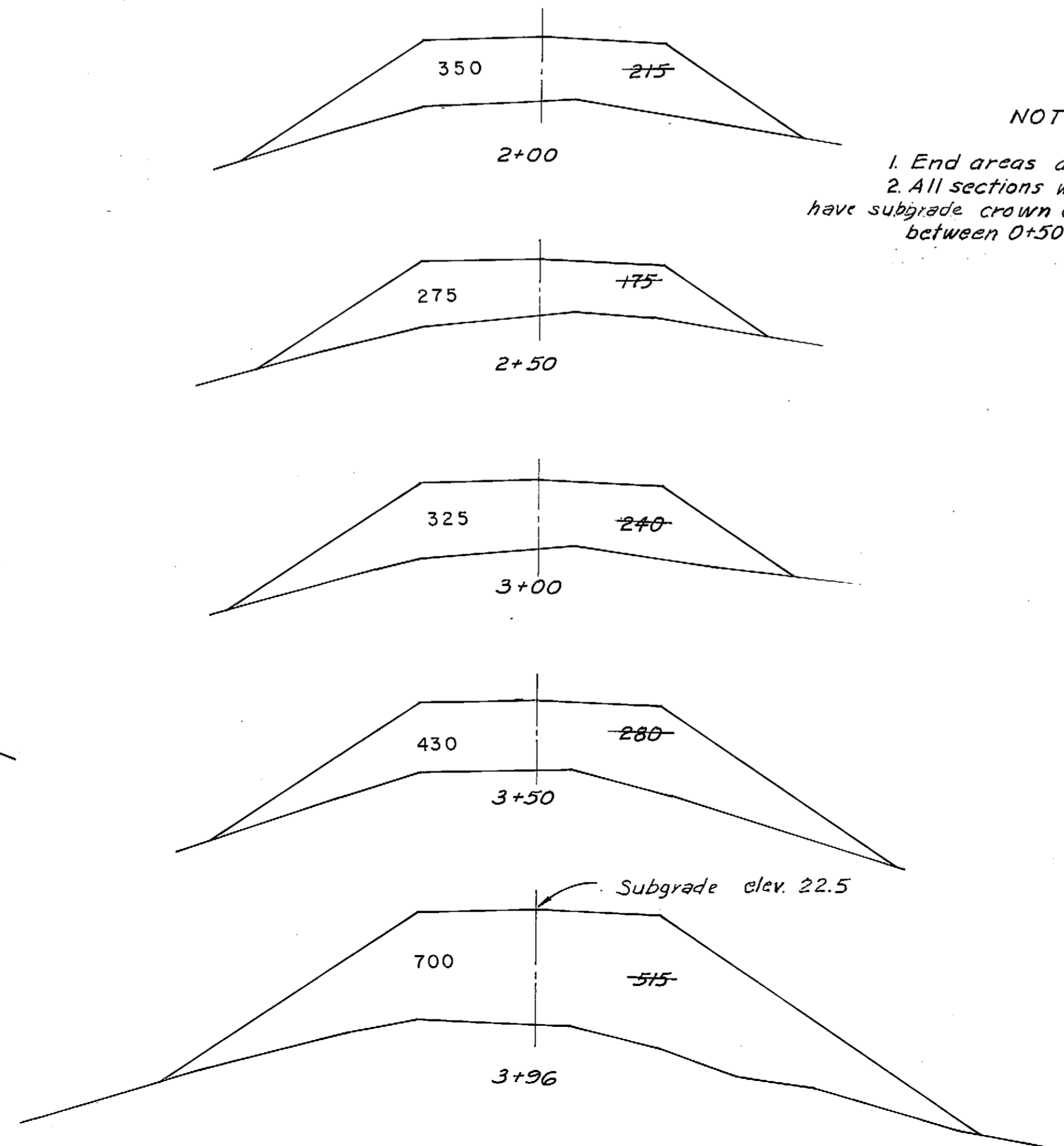
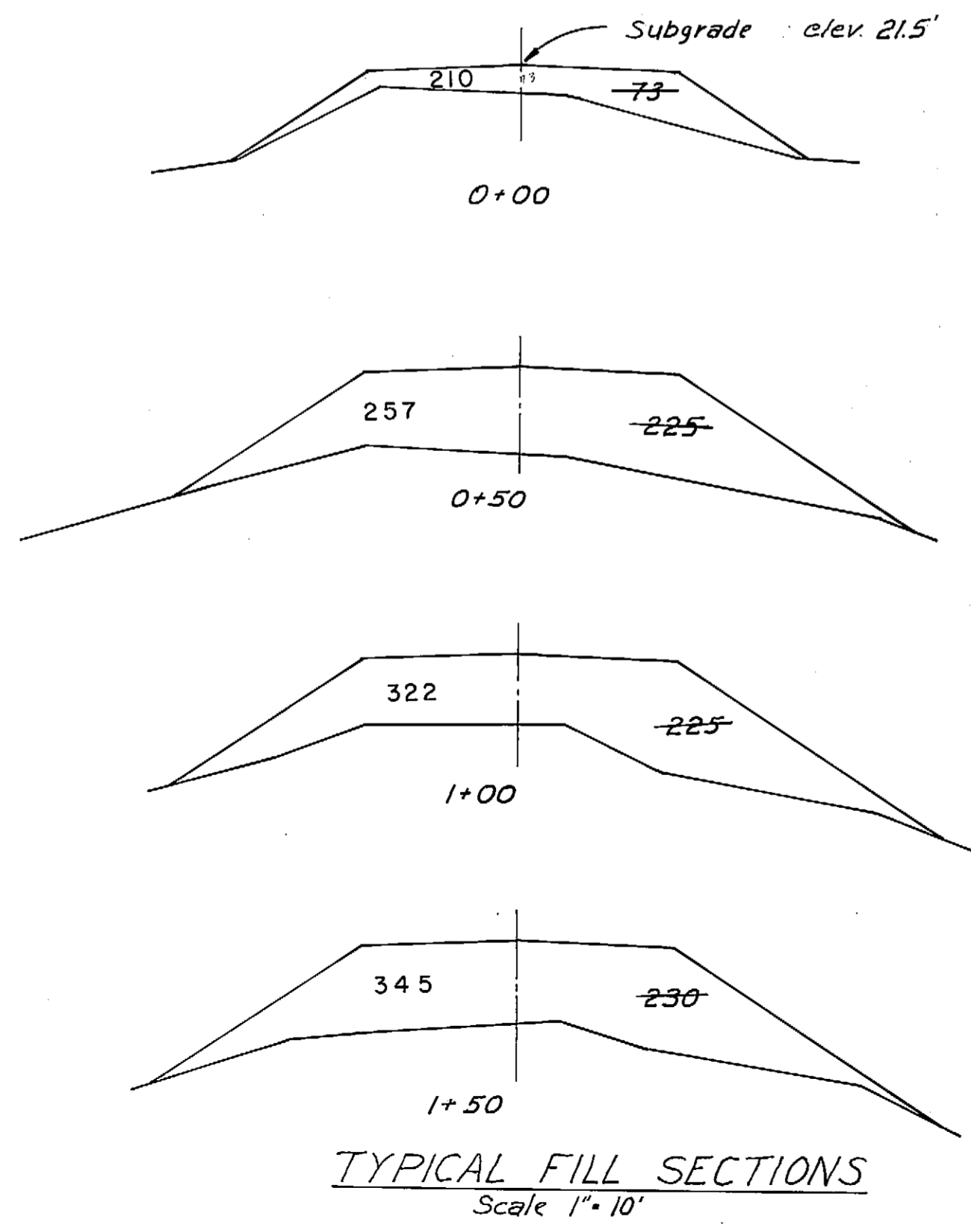
SHEET 1 OF 4



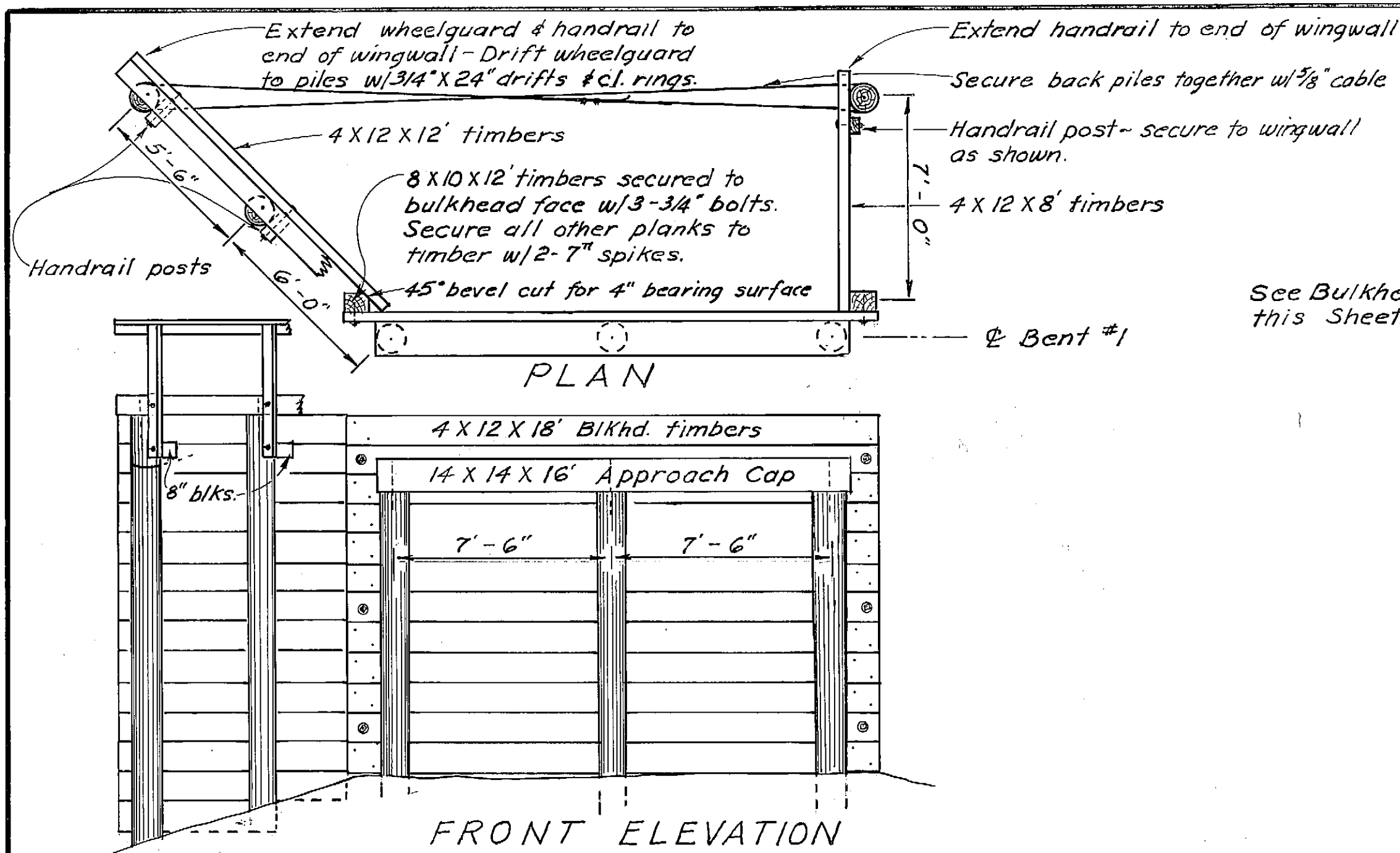
PROJECT LAYOUT PLAN
Scale 1" = 10'

NOTES - SECTIONS

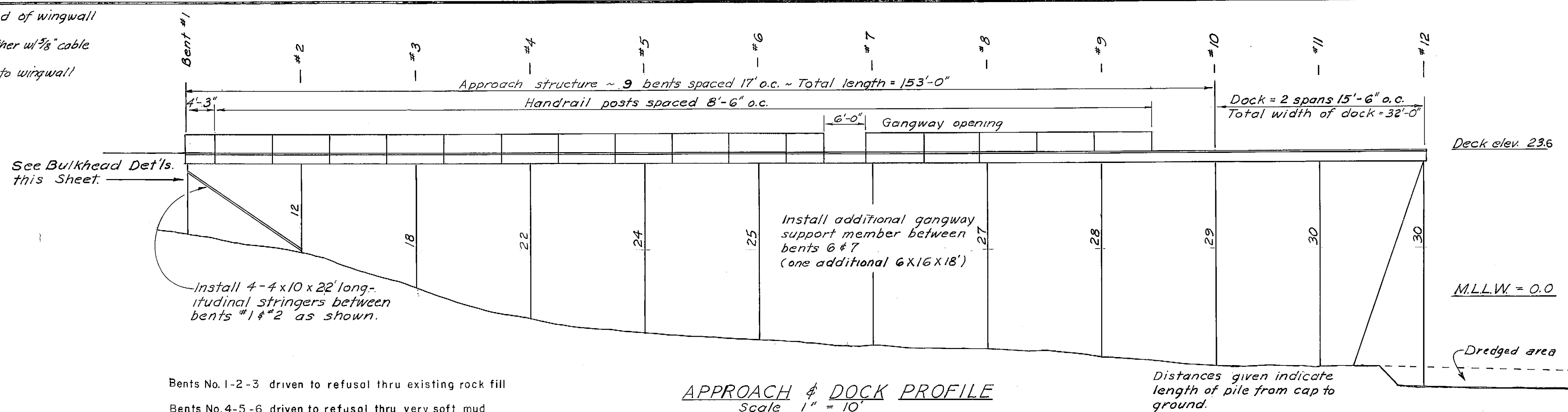
1. End areas as shown include Armor Rock
2. All sections without top elevation shown have subgrade crown elevation of 21.0' (grade between 0+50 & 3+50 is 0.0)



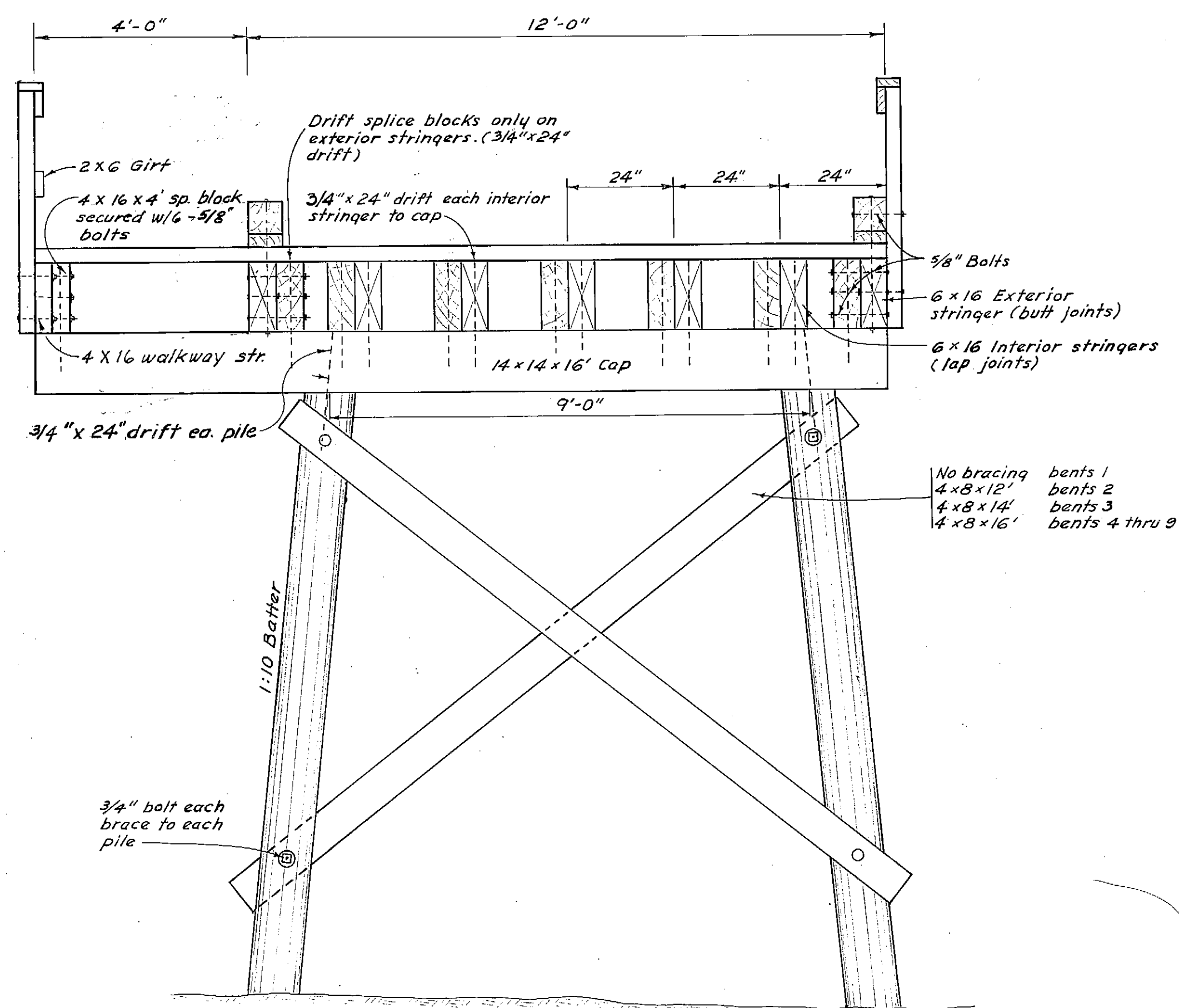
DO NOT SCALE THIS DRAWING - USE DIMENSIONS		
STATE OF ALASKA DEPARTMENT OF PUBLIC WORKS DIVISION OF WATER AND HARBORS		
KAKE APPROACH & DOCK ROADWAY CONSTRUCTION DETAILS		
SCALE <i>As Shown</i>	SURVEYED <i>DCW</i>	APPROVED
DESIGNED <i>DCW</i>	DRAWN <i>DCW</i>	DON STATTER
CHECKED	DATE <i>3-2-77</i>	DIRECTOR
PROJECT NUMBER <i>3-72173</i>	SHEET <i>2</i> OF <i>4</i>	



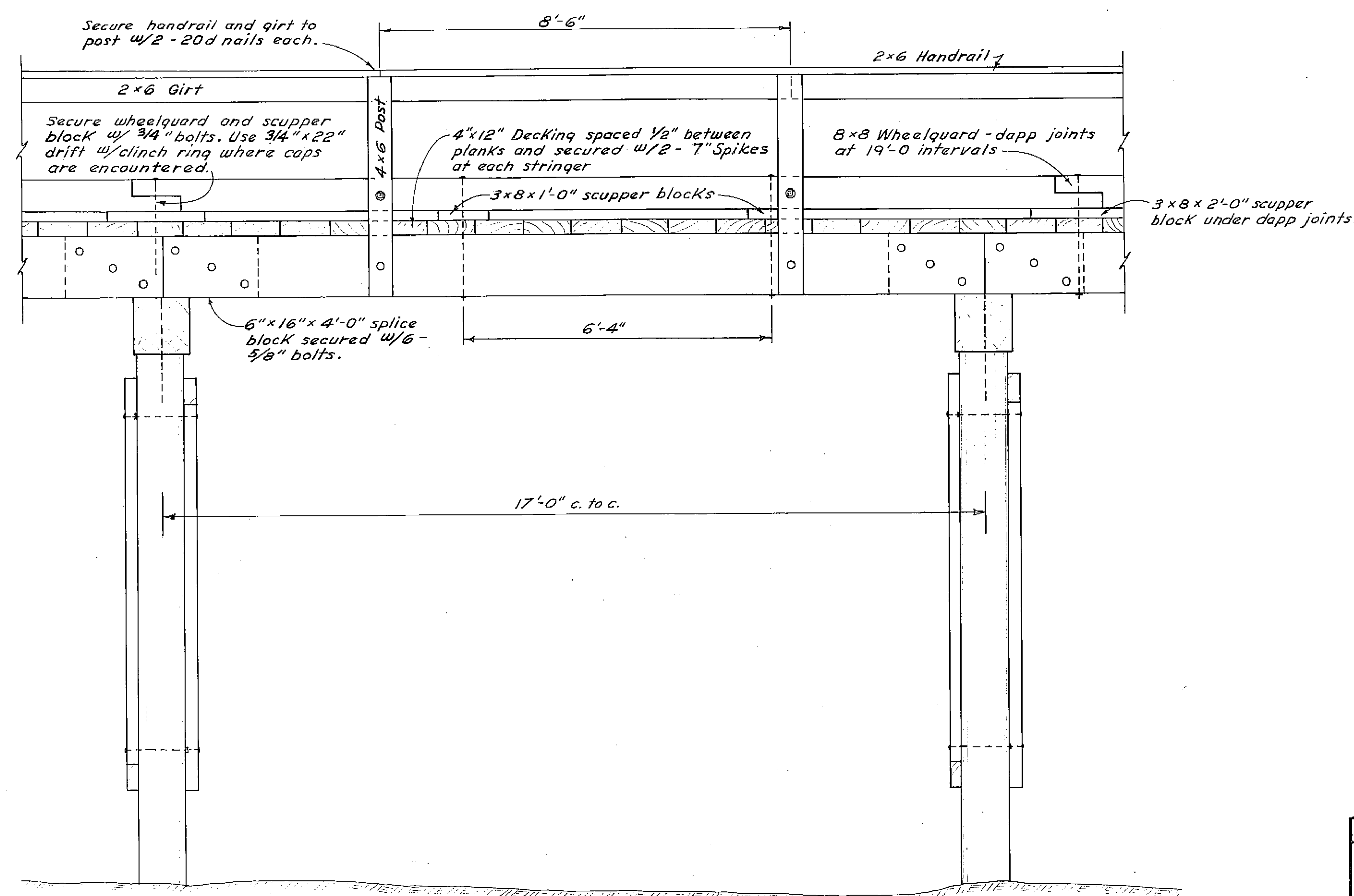
APPROACH BULKHEAD DETAILS
 Scale 1/4" = 1'-0"



Bents No. 1-2-3 driven to refusal thru existing rock fill
 Bents No. 4-5-6 driven to refusal thru very soft mud
 Bents No. 7 thru 12 driven to a minimum depth of 20' thru soft mud



TYPICAL APPROACH SECTION
 Scale 1/2" = 1'-0"



TYPICAL APPROACH ELEVATION
 Scale 1/2" = 1'-0"

- NOTES:**
- All hardware to be hot dip galvanized. A malleable iron washer shall be placed between all nut & wood surfaces.
 - All bolts to be of the economy headed type. Bolt holes to be drilled 1/16" oversize.
 - Drift holes to be 1/16" undersize.
 - All pressure treated creosote materials shall be cut to size prior to treatment.
 - Drift holes in stringers & splice blocks, and bolt holes in exterior stringers and wheelguards shall be drilled prior to treatment, including handrail post bolt holes.
 - All field drilled holes shall be treated with hot creosote oil.
 - All bearing piling to be driven tip down to 15' penetration or refusal as directed by the Engineer. Fender piling shall be driven tip down to 10' penetration.

MATERIALS		
ITEM	DRESSING	TREATMENT
Piling	Class A	12" Creo. Ret.
Bracing & Bulkhd.	Rough	"
Caps	S4S	8" Creo. Ret.
Ext. Stringers	S4S	"
Splice blocks	S2E	"
Int. Stringers	S2E	"
Decking	S1S-S2E	"
Scupper Blocks	S4S	"
Wheelguard	S4S	"
Handrail Post	S4S	"
Chocking	Rough	"
Girt	S4S	0.5" W.R. Penta
Handrail	S4S	0.5" W.R. Penta

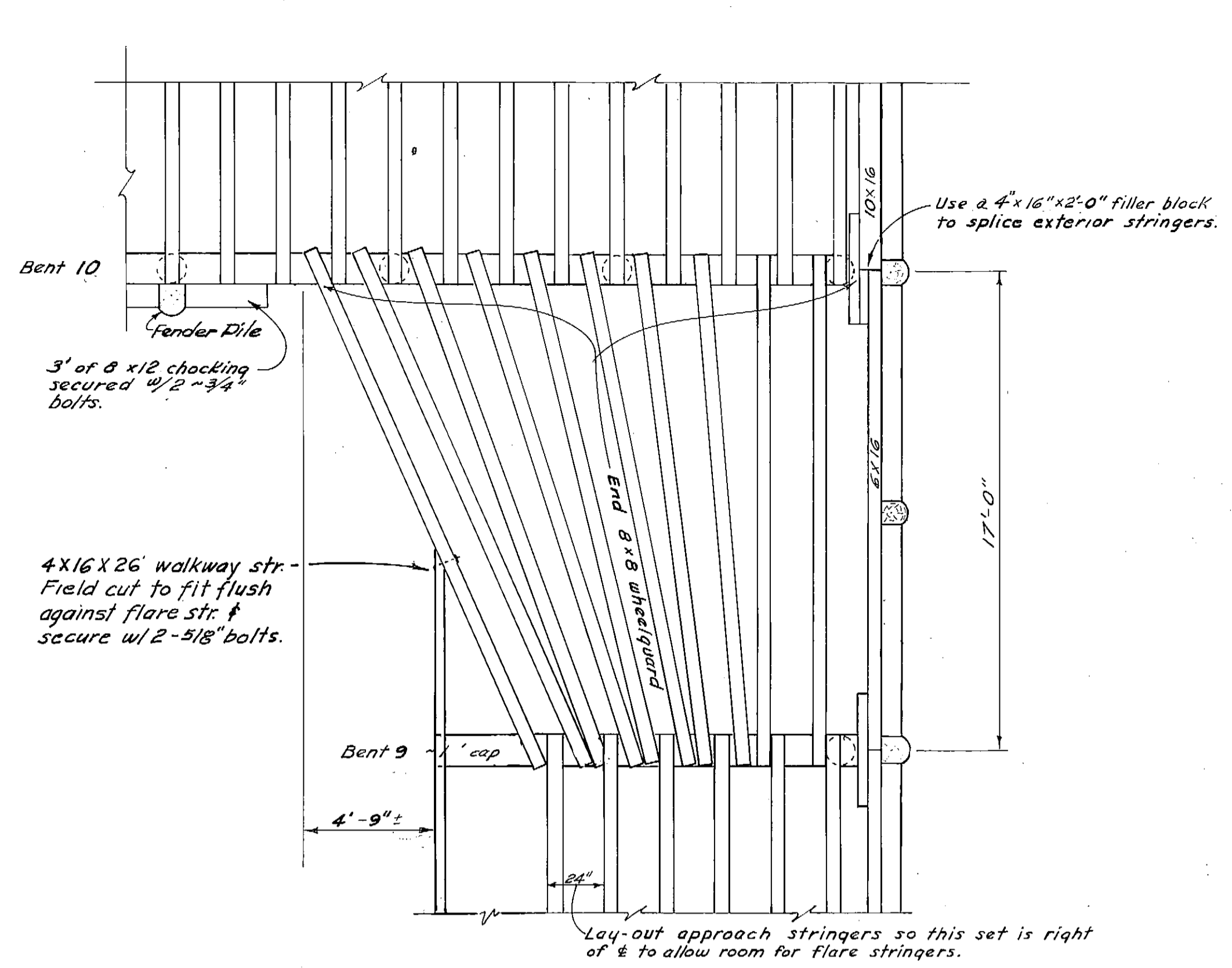
All 12 lb. creo. treatment to be Full Cell.
 All 8 lb. creo. treatment to be Empty Cell.
 All material to be construction grade Douglas Fir.

DO NOT SCALE THIS DRAWING - USE DIMENSIONS

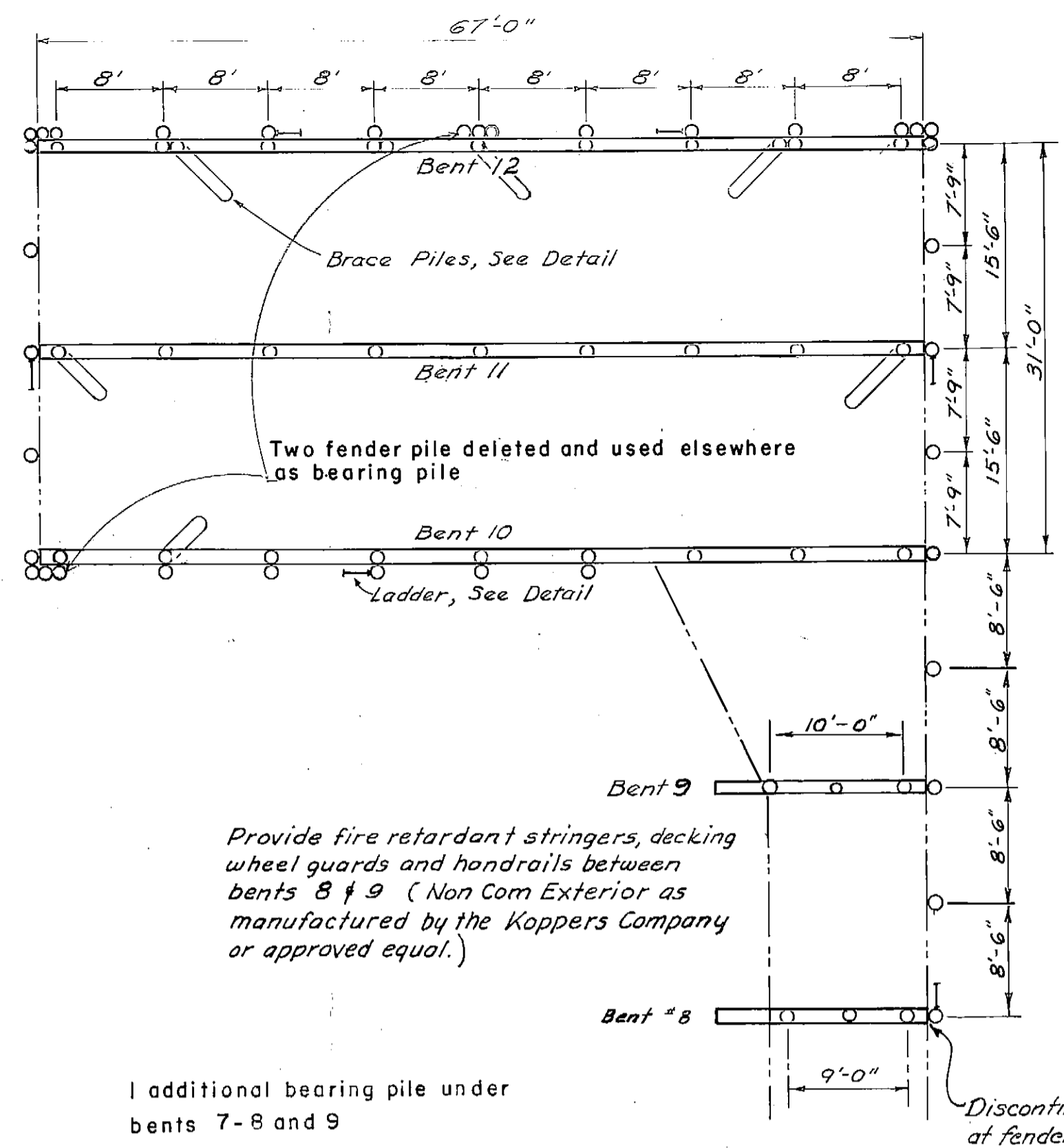
STATE OF ALASKA
 DEPARTMENT OF PUBLIC WORKS
 DIVISION OF WATER AND HARBORS

KAKE APPROACH & DOCK
 APPROACH CONSTRUCTION DETAILS

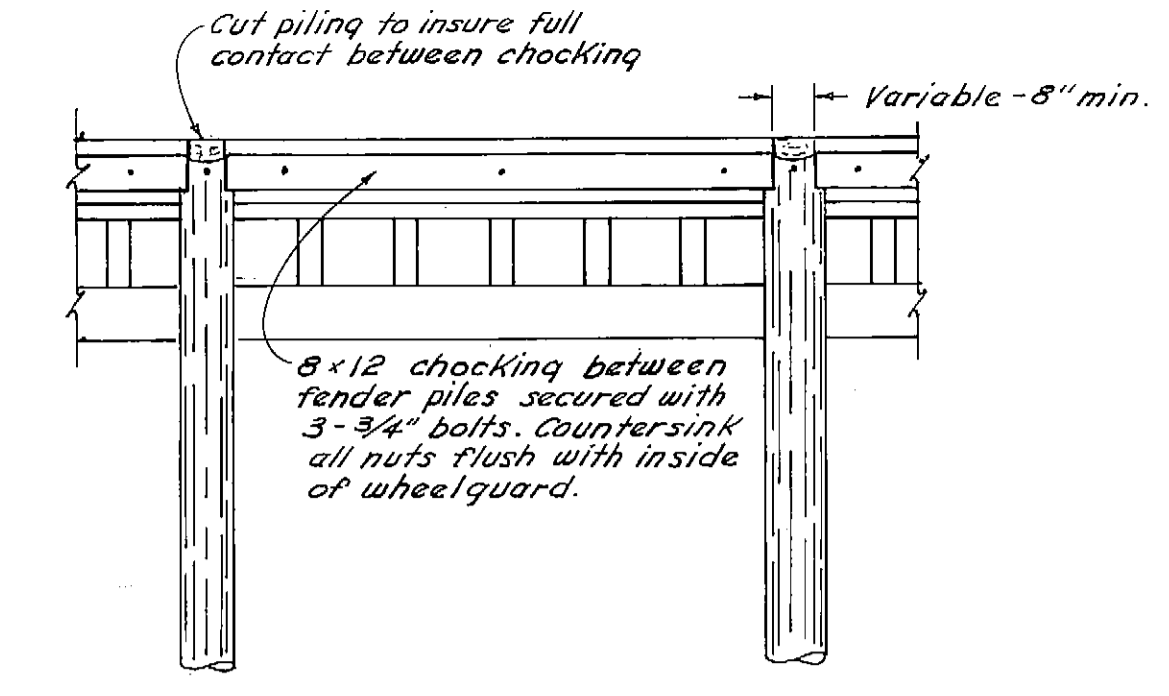
SCALE As Shown	SURVEYED DS#DW	APPROVED
DESIGNED	DRAWN DCW	DON STATTER
CHECKED	DATE 2-25-71	DIRECTOR
PROJECT NUMBER 3-72173	SHEET 3 OF 4	



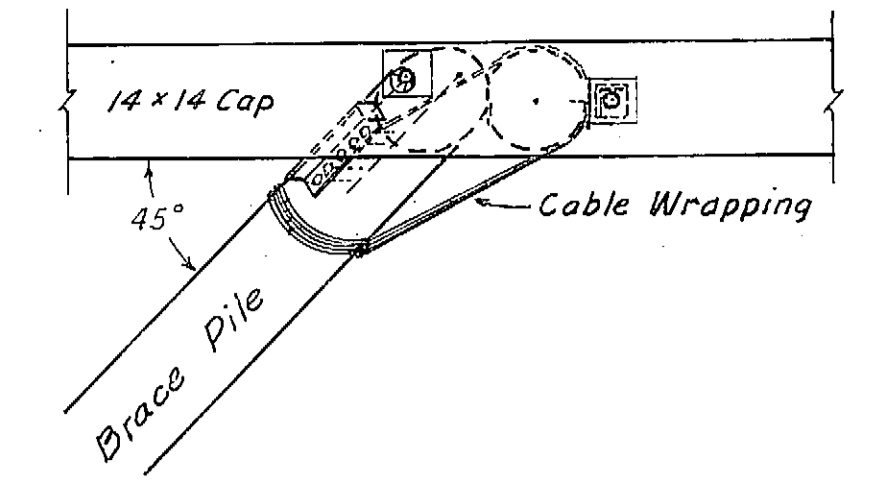
APPROACH FLARE DETAIL
Stringer Layout
scale: 1/4" = 1'-0"



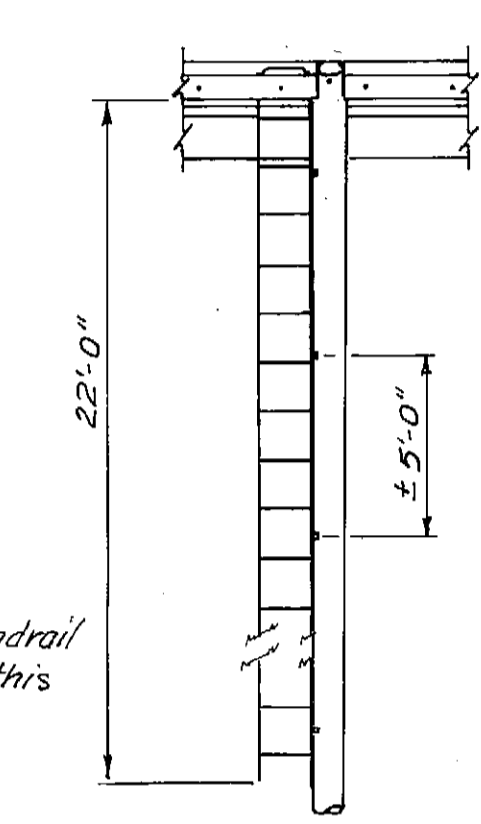
DOCK PILING & CAP LAYOUT
scale: 1" = 10'-0"



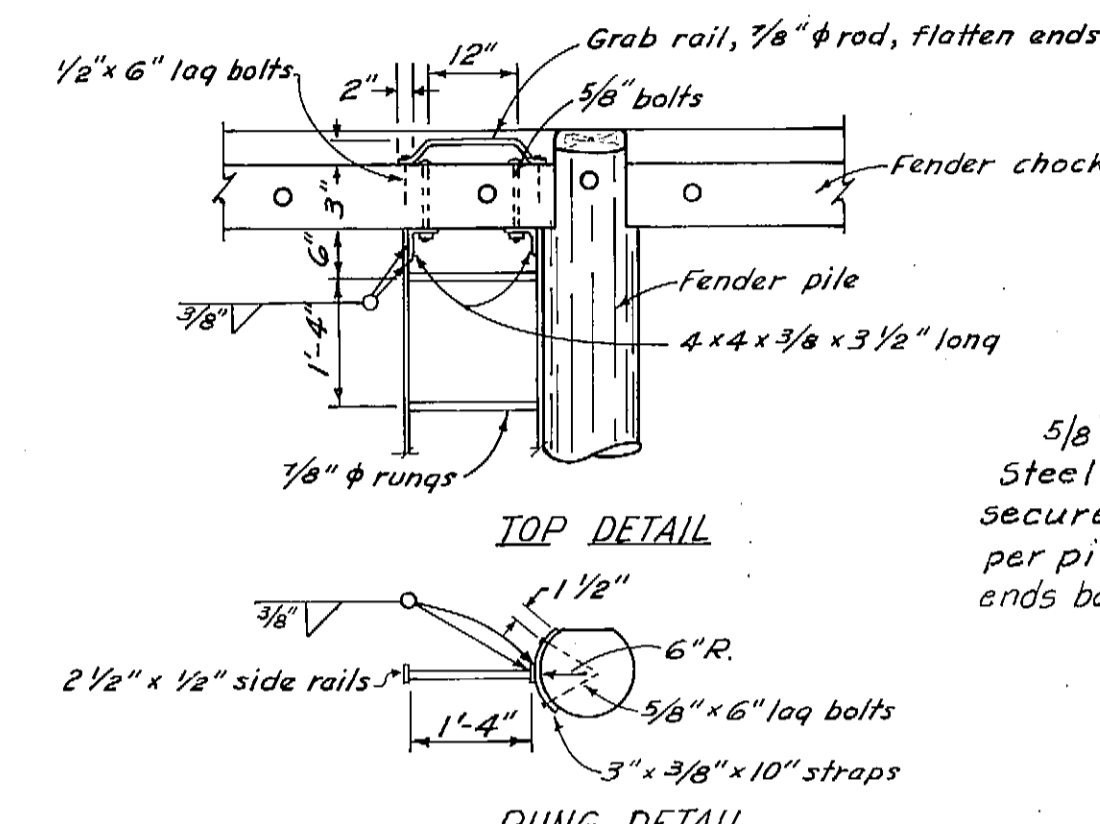
FENDER PILE DETAIL
scale: 1/4" = 1'-0"



PLAN

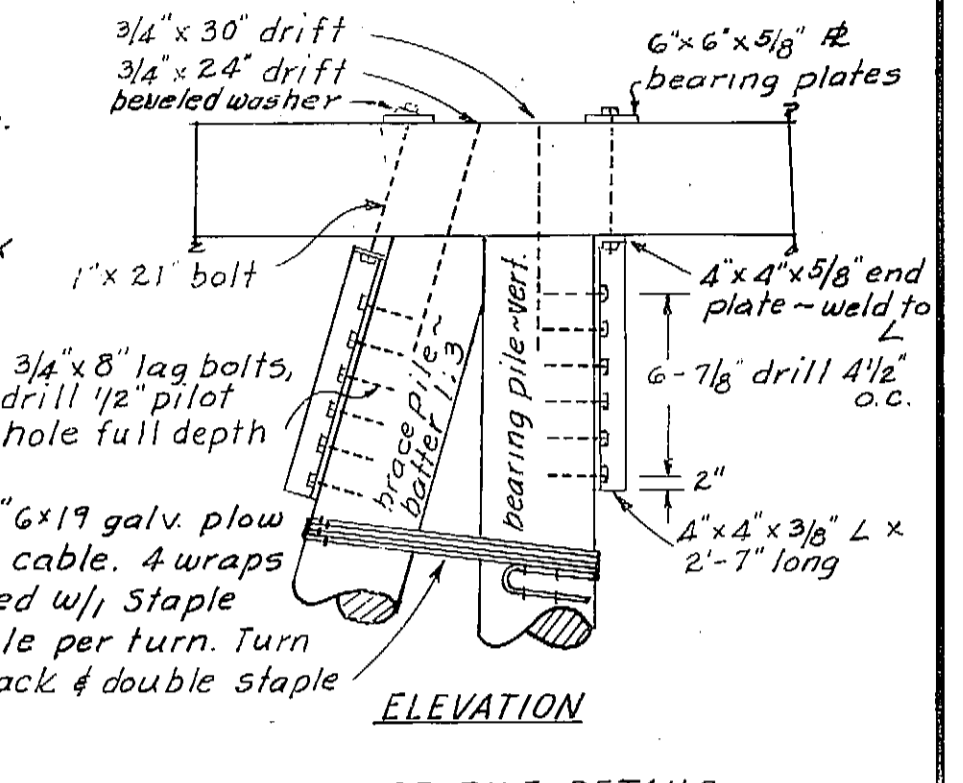


ELEVATION
scale: 3/16" = 1'-0"

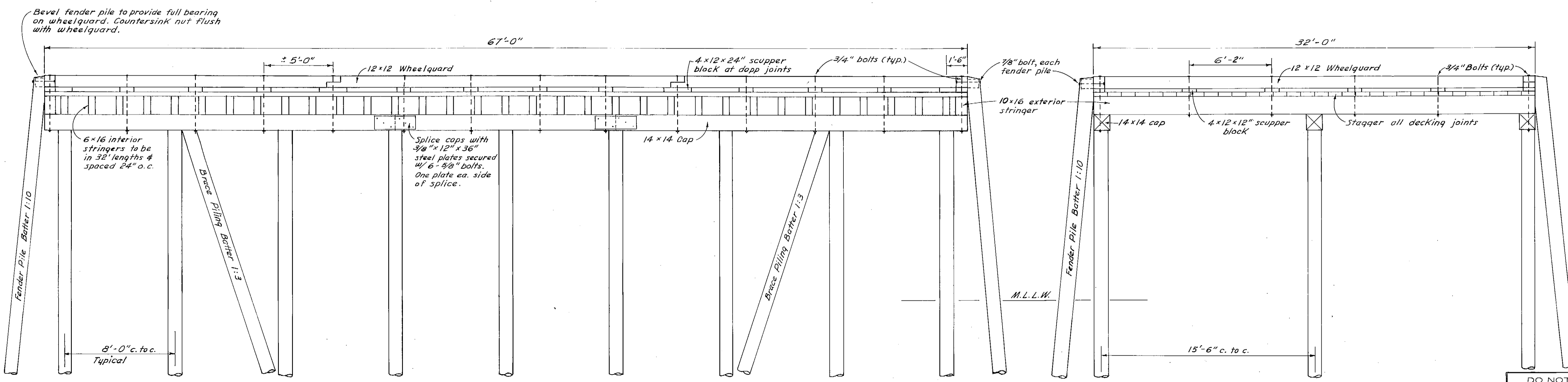


RUNG DETAIL
scale: 1/2" = 1'-0"

LADDER DETAILS
(6 req'd - see Dock Piling & Cap Layout for locations)



BRACE PILE DETAILS
scale: 1/2" = 1'-0"



ELEVATION - DOCK FACE
Fender Piling Not Shown
scale: 1/4" = 1'-0"

DOCK END VIEW
Fender Piling Not Shown
scale: 1/4" = 1'-0"

NOTE: All fastenings materials & dimensions shall conform to Typical approach construction except as shown.

DO NOT SCALE THIS DRAWING - USE DIMENSIONS		
STATE OF ALASKA DEPARTMENT OF PUBLIC WORKS DIVISION OF WATER AND HARBORS		
KAKE DOCK		
DOCK CONSTRUCTION DETAILS		
SCALE As Shown	SURVEYED D.S.-DW	APPROVED
DESIGNED D.S.M.	DRAWN DCW	DON STATTER
CHECKED D.S.M. P.E.	DATE 2-20-71	DIRECTOR
PROJECT NUMBER 3-72173	SHEET 4 OF 4	