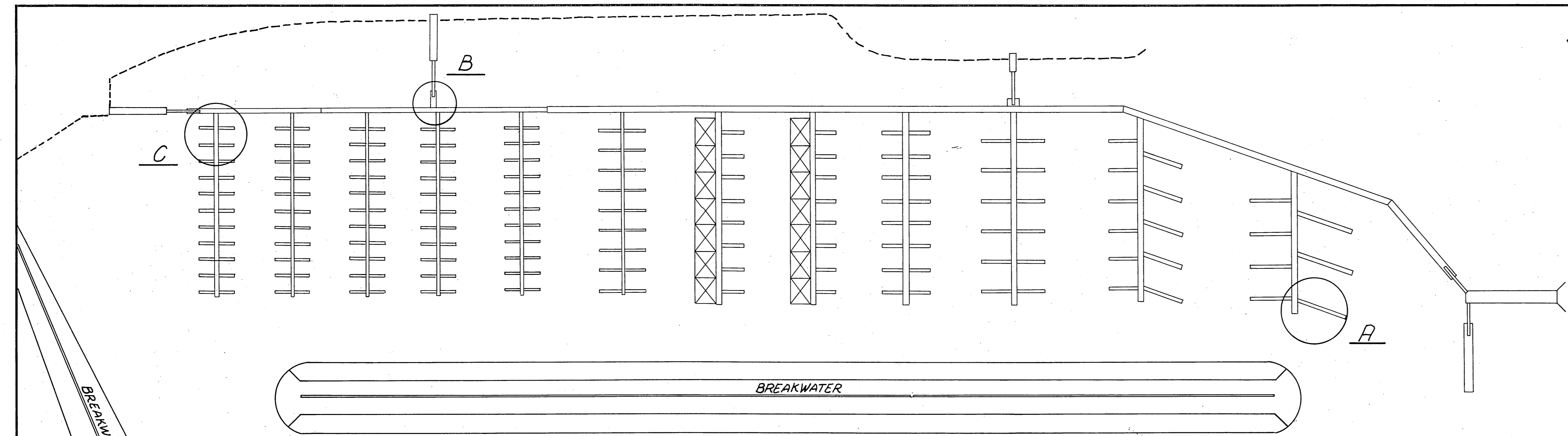


# JUNEAU STORM DAMAGE REPAIRS PROJECT NO. X-30211

INDEX TO SHEETS	
1	PROJECT LAYOUT - WORK ITEM LOCATION
2	PILE DOLPHIN & GANGWAY FLOAT CONNECTION
3	FLOAT REPLACEMENT PLAN & DETAILS
4	STANDARD FLOAT UNITS 6'x8' & 3'x12'

**WORK SUMMARY:**

- 1) Replace damaged 8'x6' & 6'x8' standard concrete float units.
- 2) Replace two (2) damaged 3"x8"x18' timber wales, one (1) 3"x8"x20' wale, and 30'-2"x8" bumper board.
- 3) Replace damaged 3'x12' standard concrete float unit with float brace, filler slab, 3"x8"x24' glu-lam wale, & 2"x8"x30' bumper board.
- 4) Replace existing 3"x8" wales with 7"x3"x 5/16" structural tubing at gangway float.



**AURORA HARBOR SITE PLAN**  
1"=100'

*Estimate*

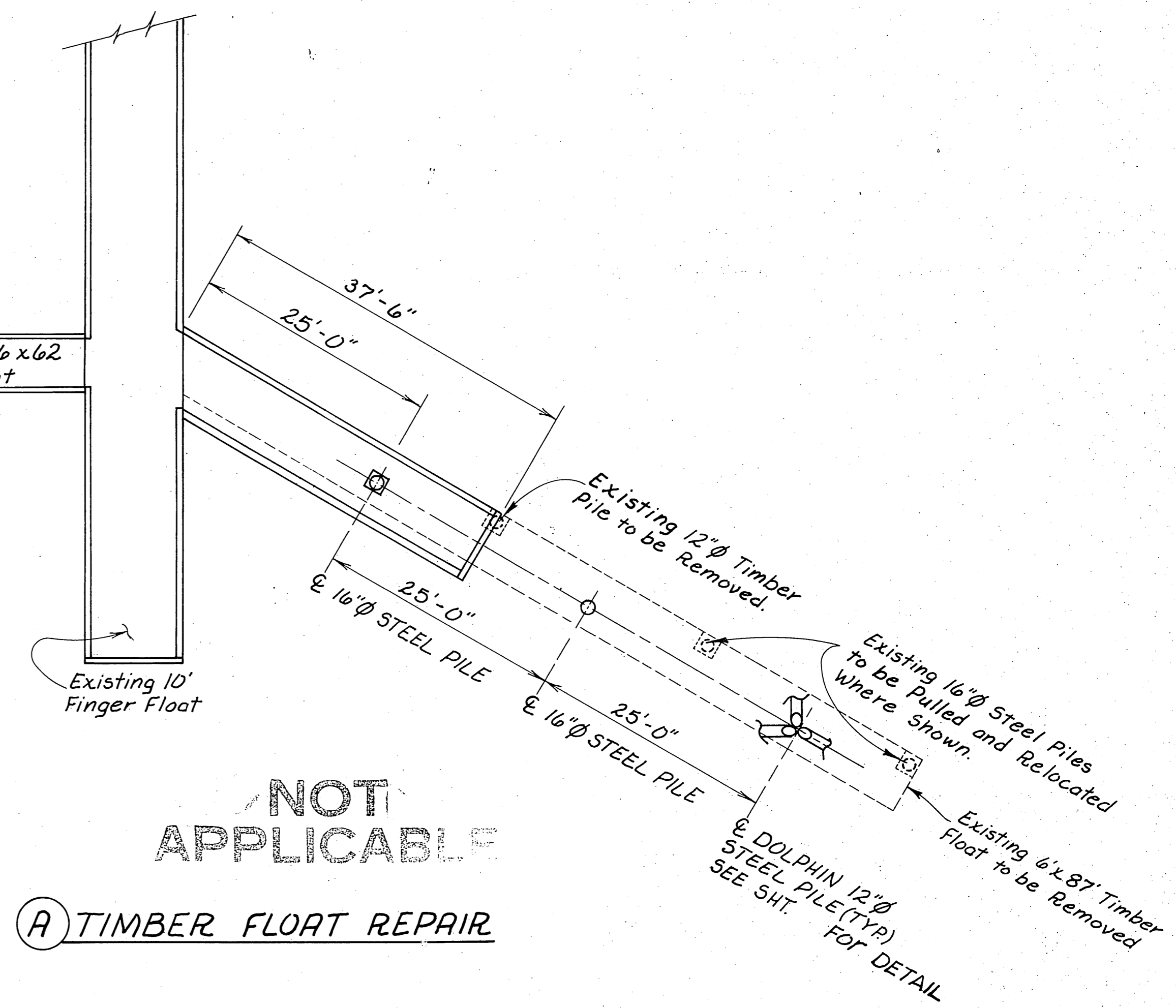
41) Float Replace Pull 2-76" @ 500 1600- Drive 2 16" @ 1000 2000- Construct 8x37 1/2 @ 35 10500- Drive 3 12" @ 64 6720- 3-64x 192 @ 35 3000- 3-1000 500- 1490 - hours	42) Gangway Float Repair L.S. @ 500 x 1.35 = \$ 6,750  43) Float Replace 1 8x6 1 6x8 1 3x12 = 132 @ 90/4' 11,900 x 1.35 = \$ 16,065
24,320 x 1.35 = \$ 32,830  41) 32,830 42) 6,750 43) 16,065 \$ 55,645	

New 8'x6' Standard Float Unit, & Replace 2-3"x8"x18'-0" Wales, 1-3"x8"x20'-0" Wale 30'-2"x8" bumper board. See det. sht. 3.

New 3'x12' Standard Float Unit, Float Angle Brace, Concrete Filler Slab, 3"x8"x24'-0" Glu-Lam Wale & 30'-2"x8" Bumper Board. See sht. 4 for det.

New 6'x8' Standard Float Unit-Only. Reassemble. See sht. 4 for det.

Replace Existing 3"x8" Wales (inside only) with 7"x3"x 5/16" Structural tubing. See sht. 2 for det.



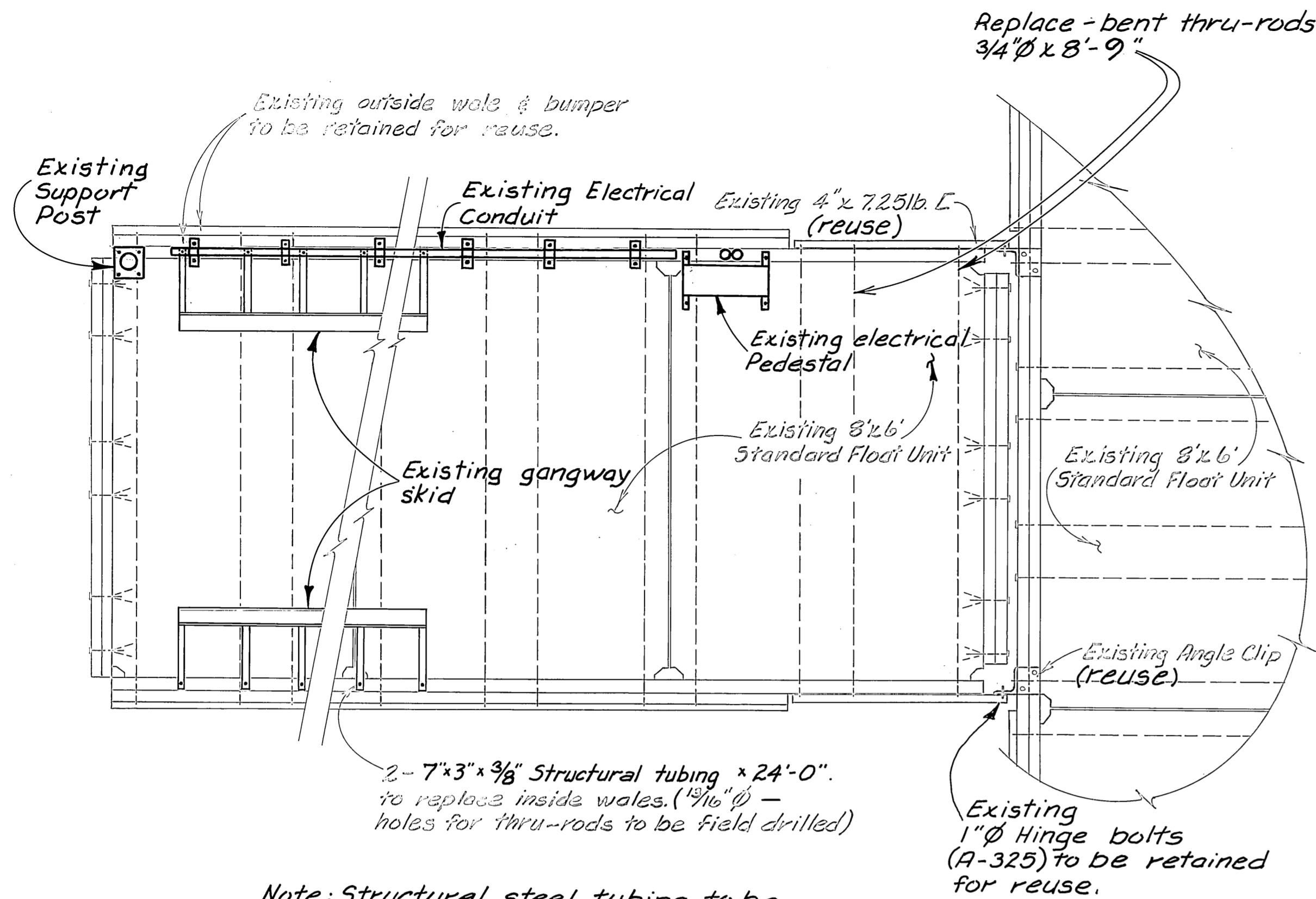
**NOT APPLICABLE**

(A) TIMBER FLOAT REPAIR

(C) CONCRETE FLOAT REPLACEMENT

(B) GANGWAY FLOAT HINGE REPAIR

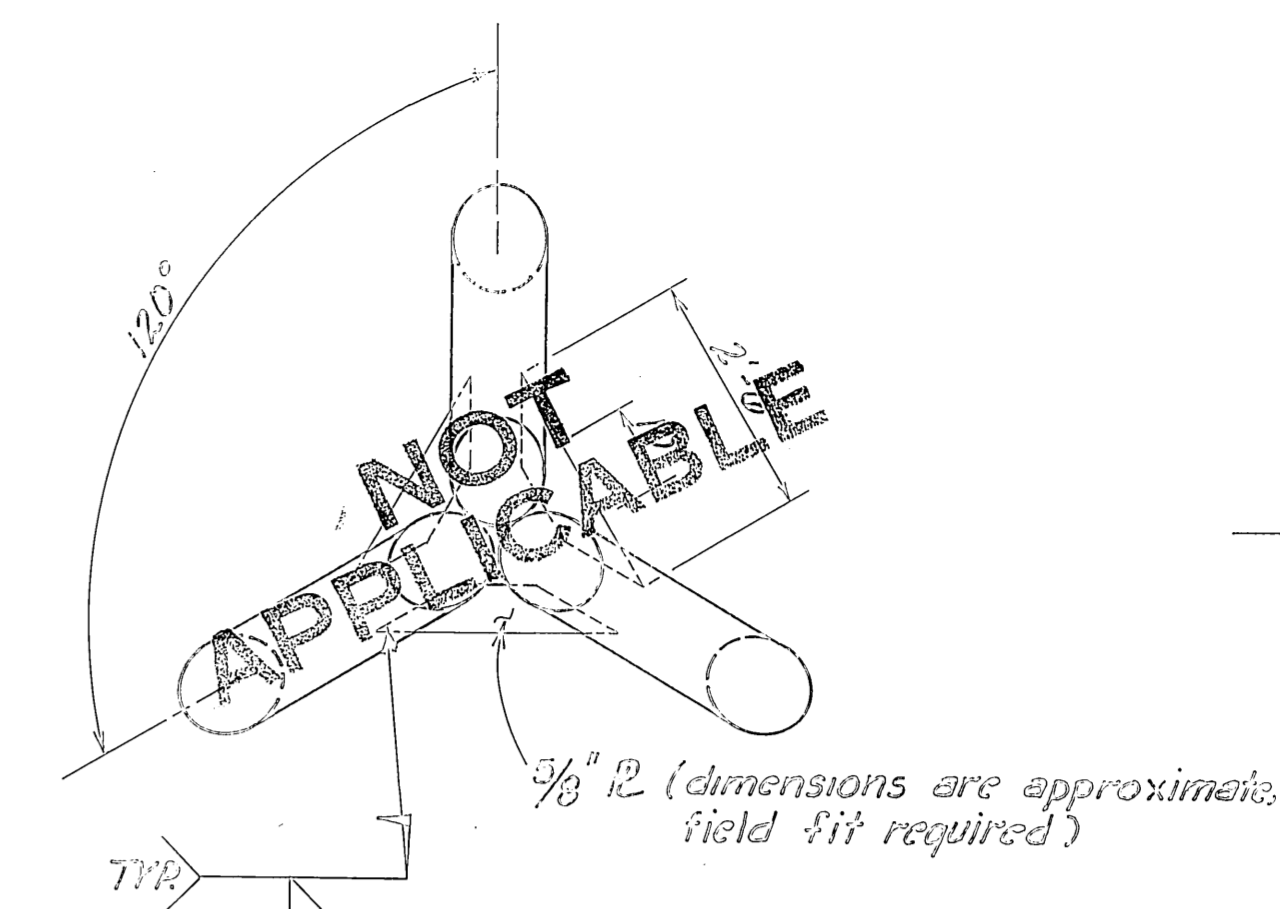
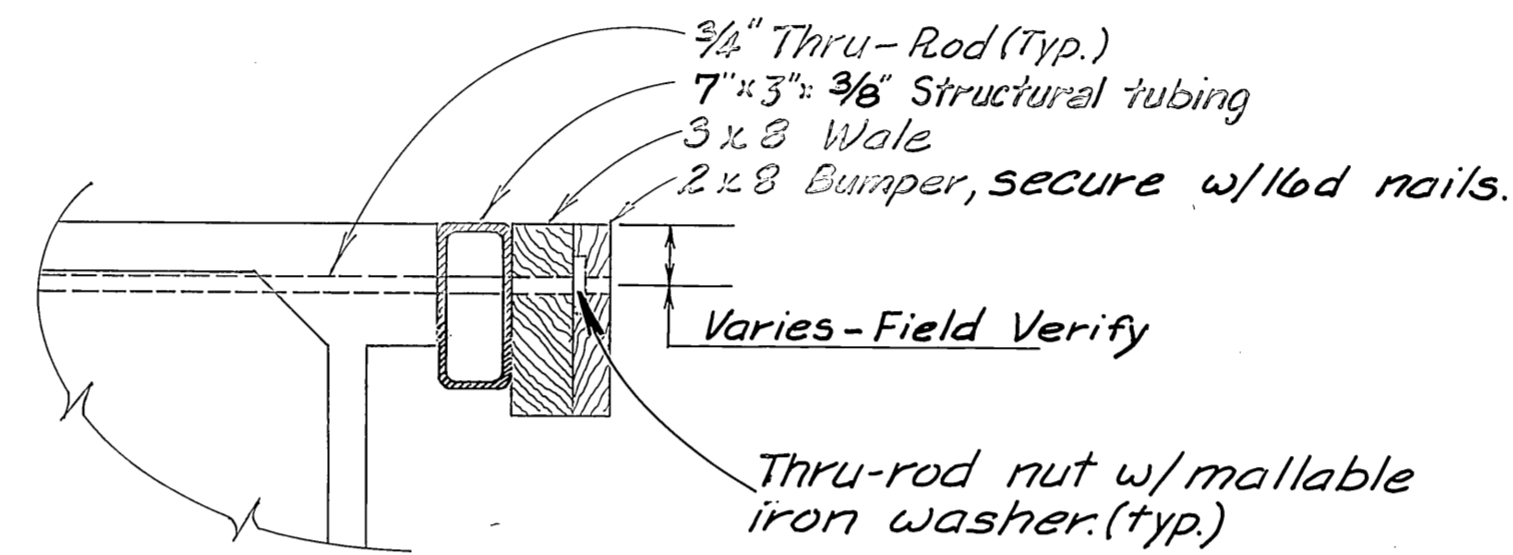
STAMP	DO NOT SCALE THIS DRAWING - USE DIMENSIONS		
	STATE OF ALASKA DEPARTMENT OF TRANSPORTATION AND PUBLIC FACILITIES		
	Juneau Storm Damage Repairs <b>PROJECT LAYOUT</b>		
	<b>WORK ITEM LOCATION</b>		
DESIGNED <u>RB</u>	CHECKED <u>RB</u>	DRAWN <u>MC</u>	DATE <u>MARCH '85</u>
PROJECT NUMBER <u>X-30211</u>	SHEET <u>1</u> OF <u>4</u>		



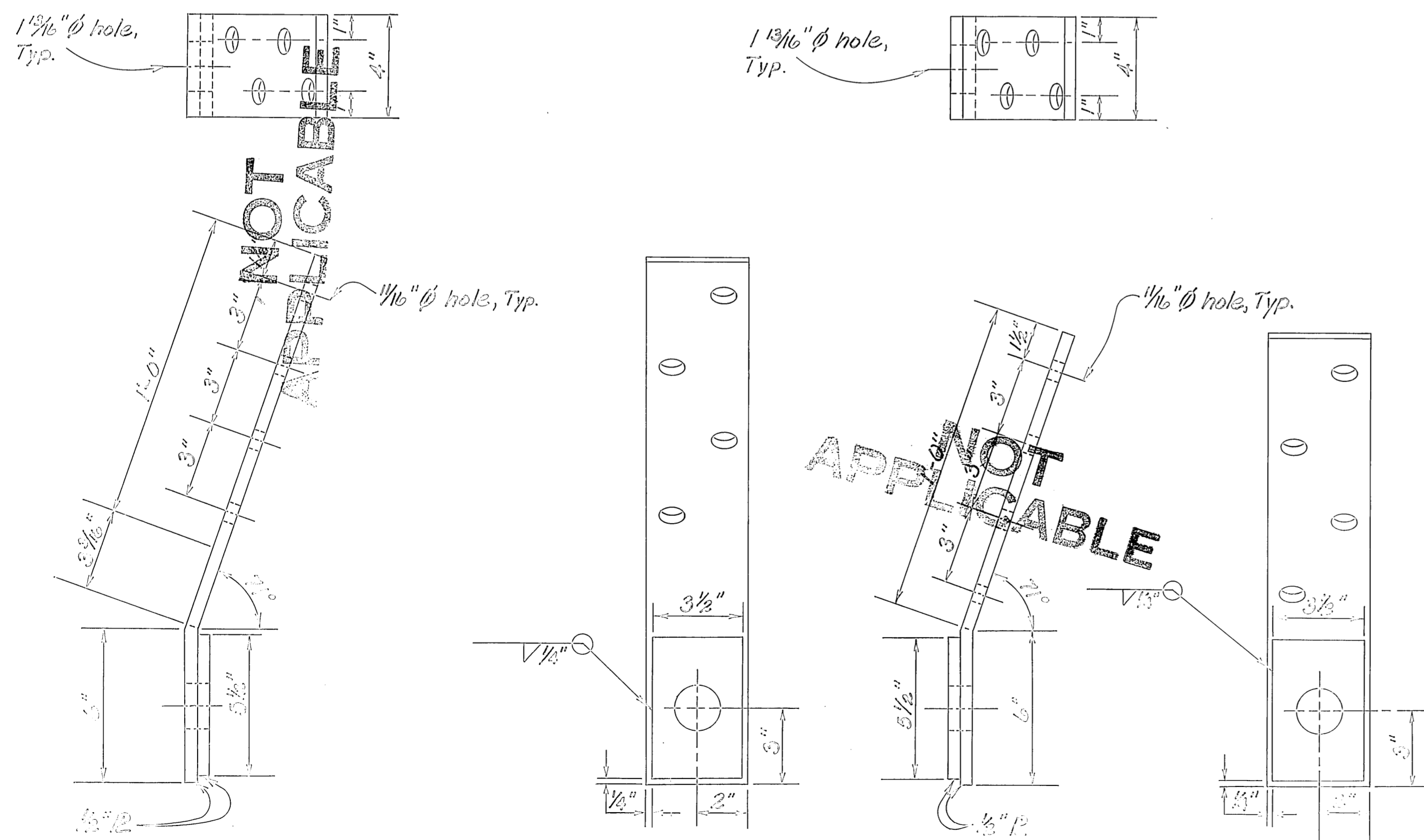
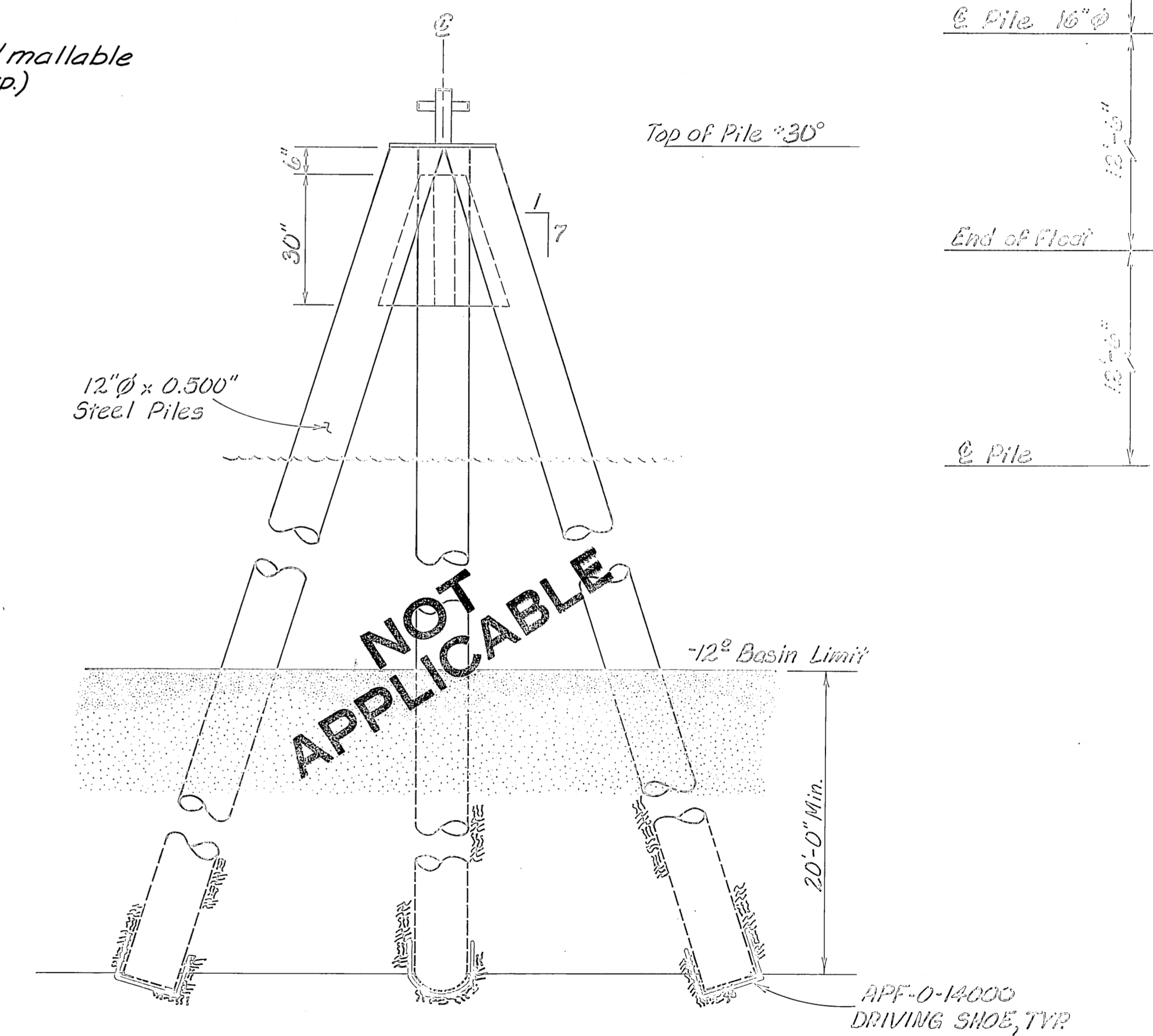
Note: Structural steel tubing to be hot dip galvanized. - All field drilled holes to be field treated with zinc rich cold galvanizing. All drilling chips to be removed from tubing interior.

NOTE: Subject to the Project Engineer's approval. The Existing gangway skids, electrical pedestal, conduit, & support post shall be resecured to gangway float after repairs are completed.

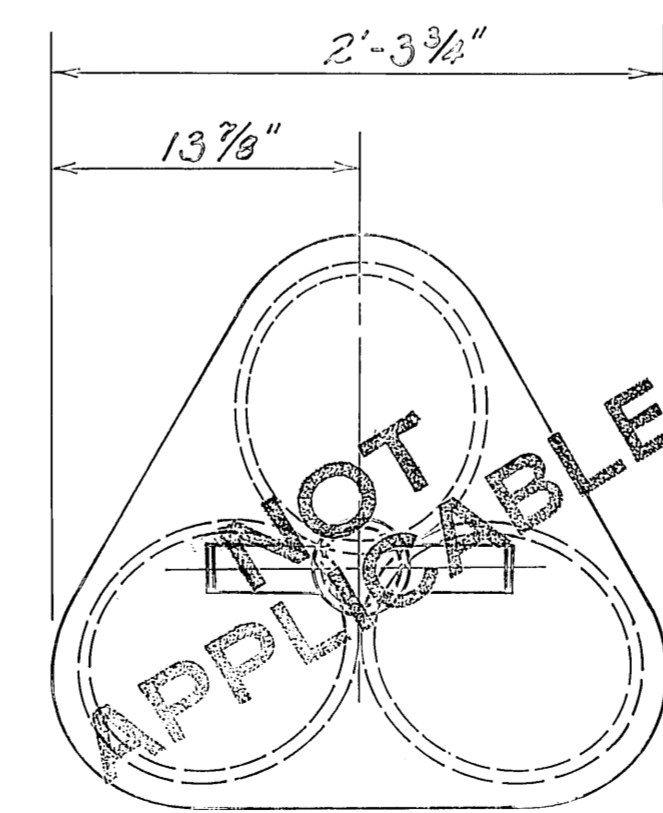
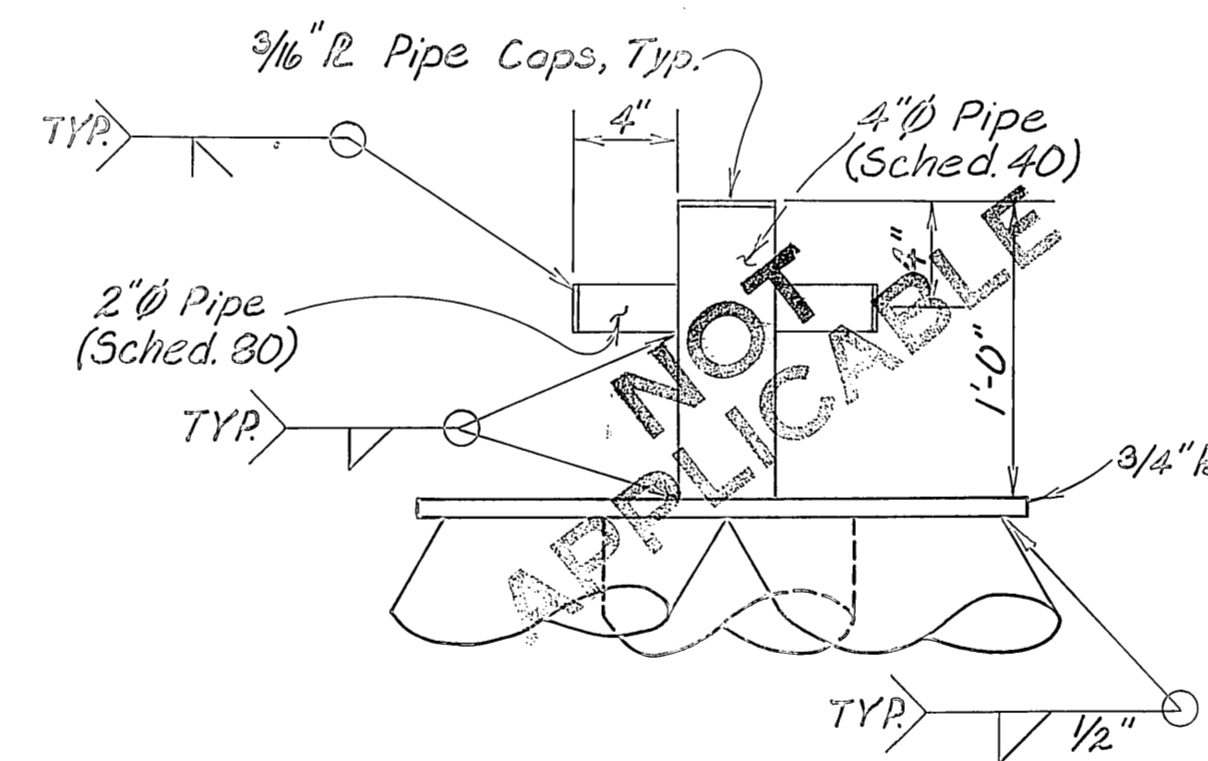
NOTE: Cap & Ballard are not shown.



GANGWAY FLOAT CONNECTION



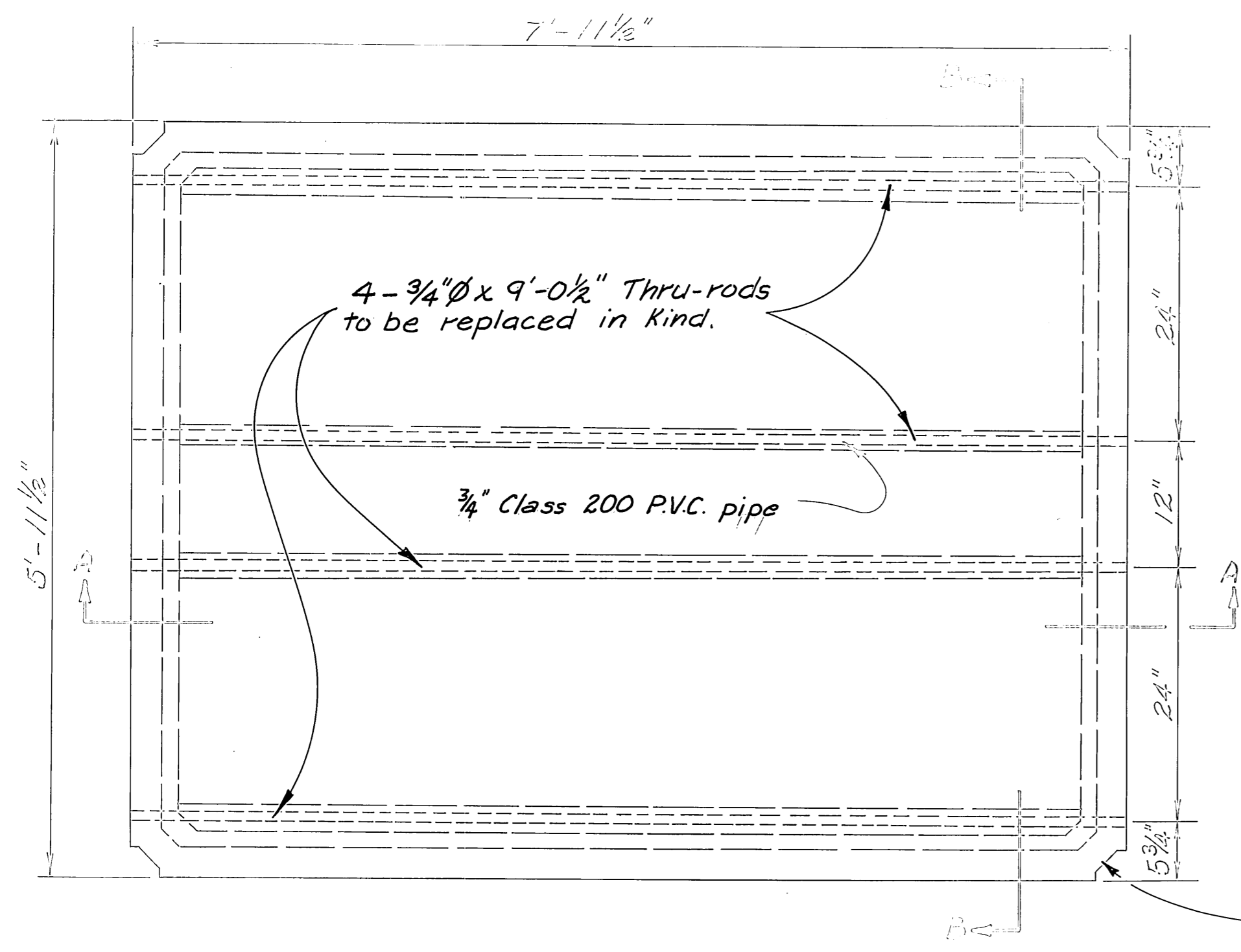
HINGE PLATE DETAIL  
3" = 1'-0"



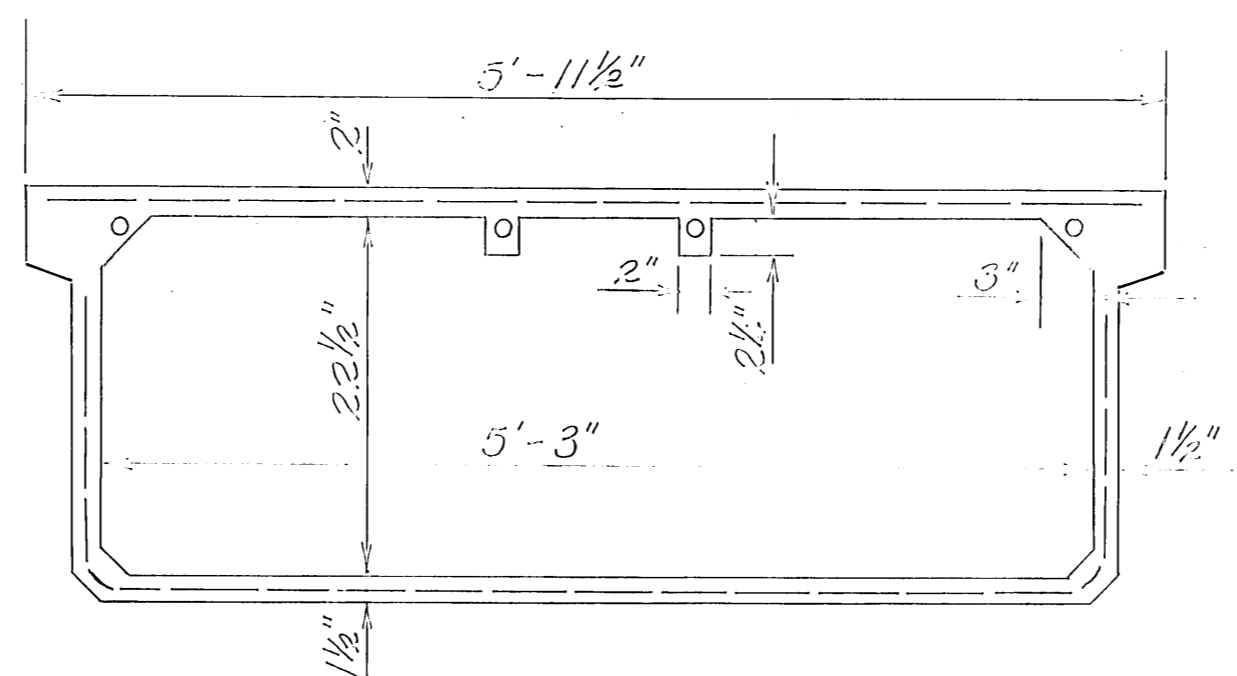
CAP & BALLARD DETAIL  
1 1/2" = 1'-0"

THREE PILE DOLPHIN ELEVATION  
1/2" = 1'-0"

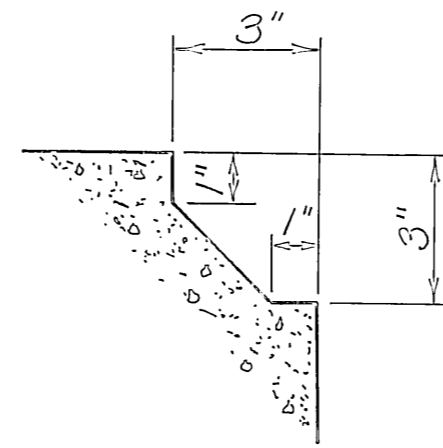
	DO NOT SCALE THIS DRAWING - USE DIMENSIONS			
	STATE OF ALASKA DEPARTMENT OF TRANSPORTATION AND PUBLIC SAFETY			
PILE DOLPHIN & GANGWAY FLOAT CONNECTION				
DESIGNED RD	CHECKED RB	DRAWN NG	DATE ISSUED TYP	
PROJECT NUMBER 1-50211	SHEET 2	OF 4		



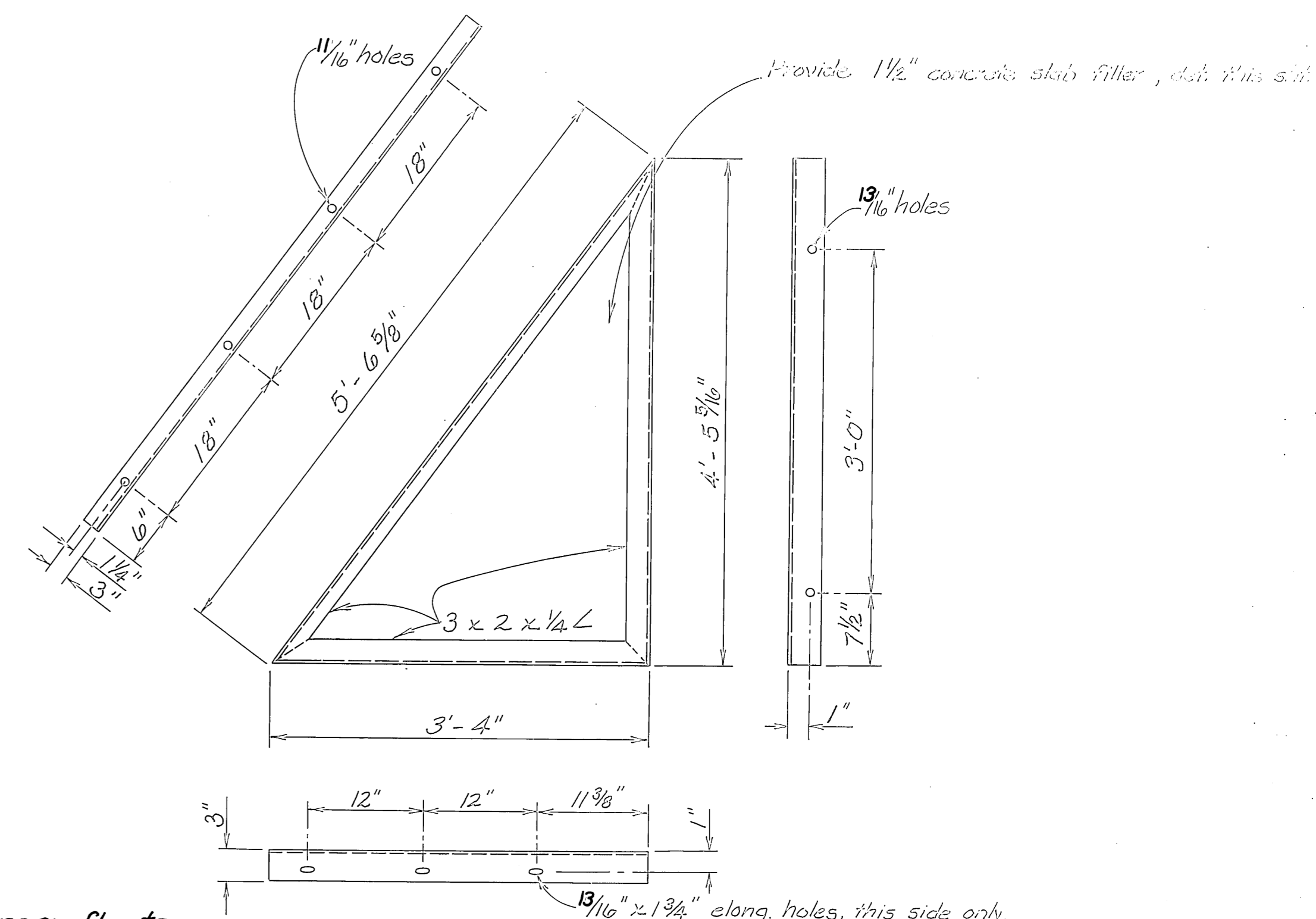
PLAN



SECTION B-B

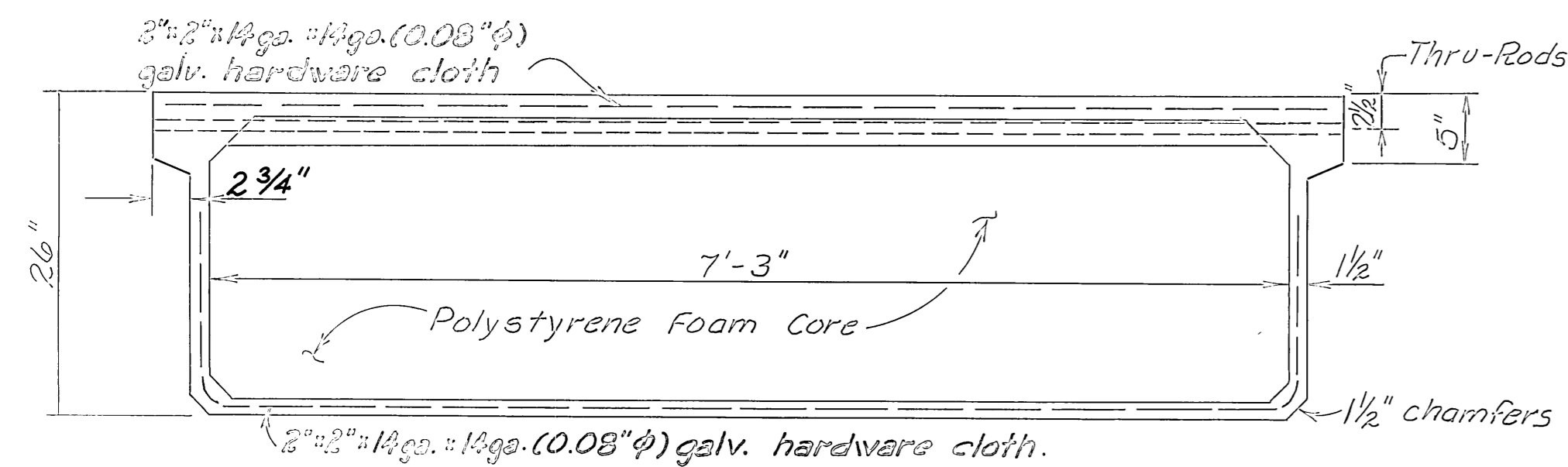


BLOCKOUT DETAIL



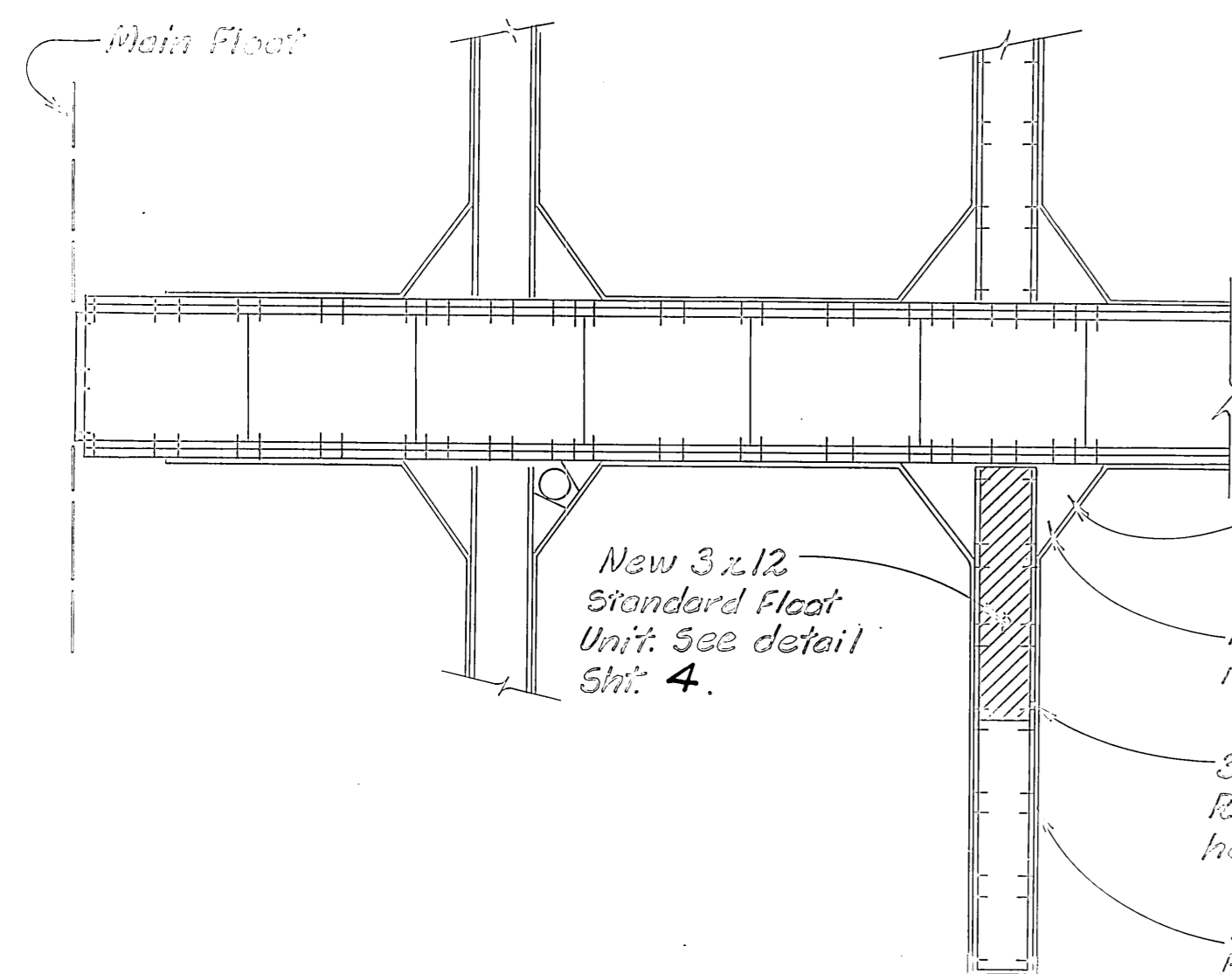
Float Angle Brace Detail

**NOTE:** Existing main and finger floats have electrical wiring in place. The Contractor shall reinstall existing wiring on repaired/replaced float sections. Electrical service is not to be interrupted except with the advance written permission of the project engineer. In no instance will electrical service be interrupted for more than 4 hours in any 24 hour period.

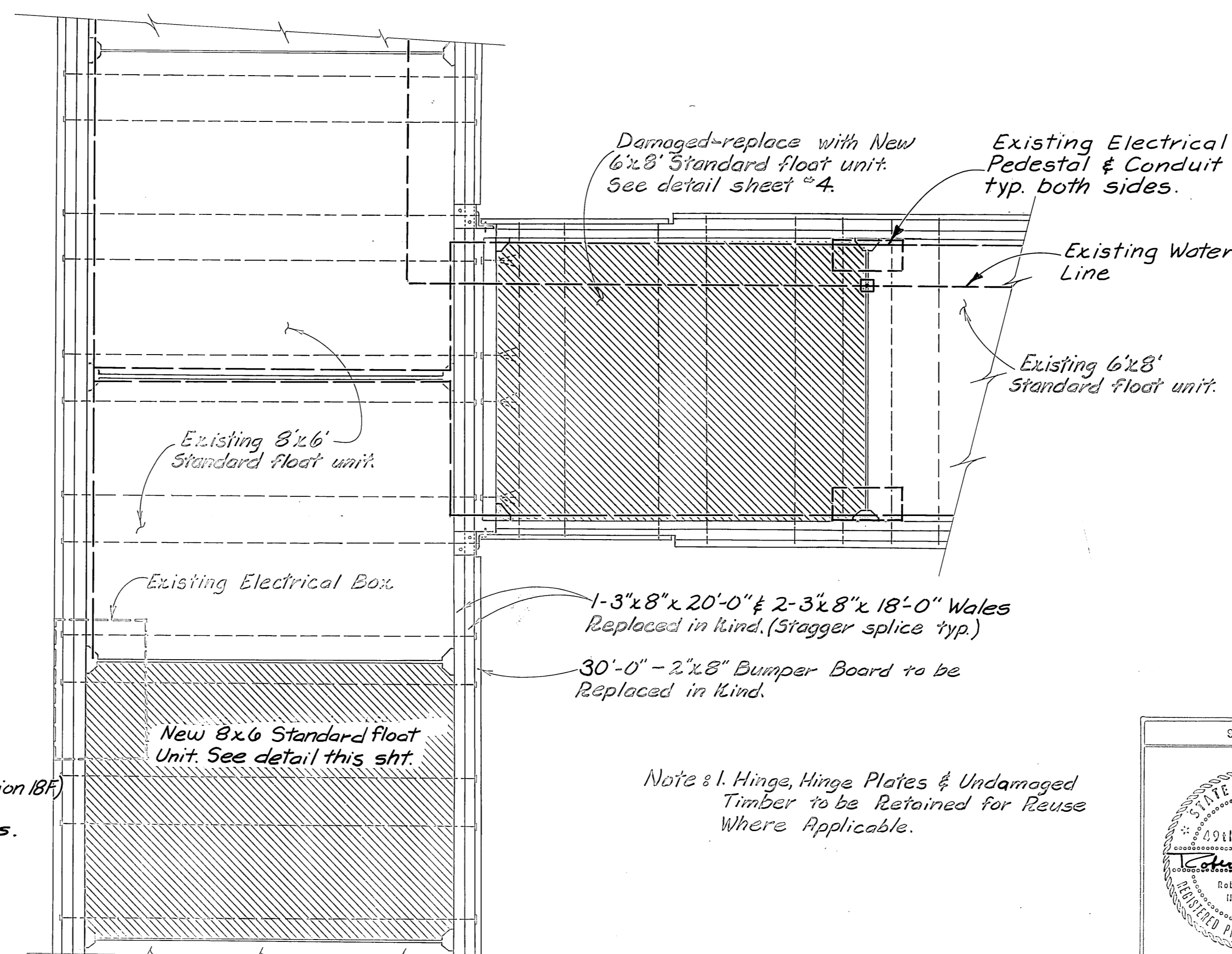


SECTION A-A

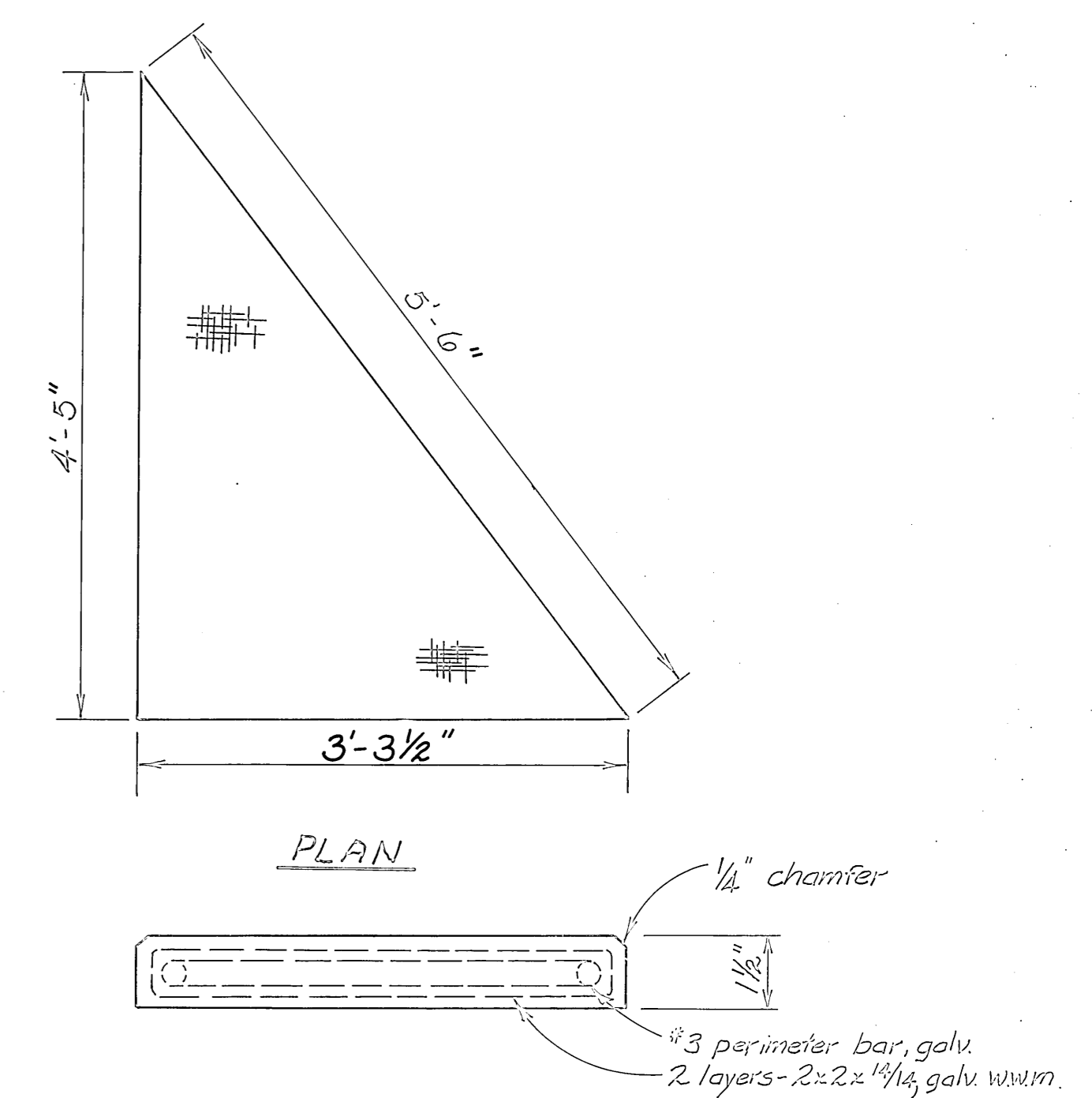
8x6 STANDARD FLOAT



Replace float angle brace in kind. See detail this sht.  
 Replace Concrete Filler Slab in kind. See detail this sht.  
 3"x8"x24'-0" Glu-Lam Wale (Combination IBF) Replaced in kind. (Field drill thru-rod holes.) Resecure existing cleats.  
 Approx. 20'-0" of 2"x8" Bumper Board to be replaced in kind. Secure w/6d Box Nails



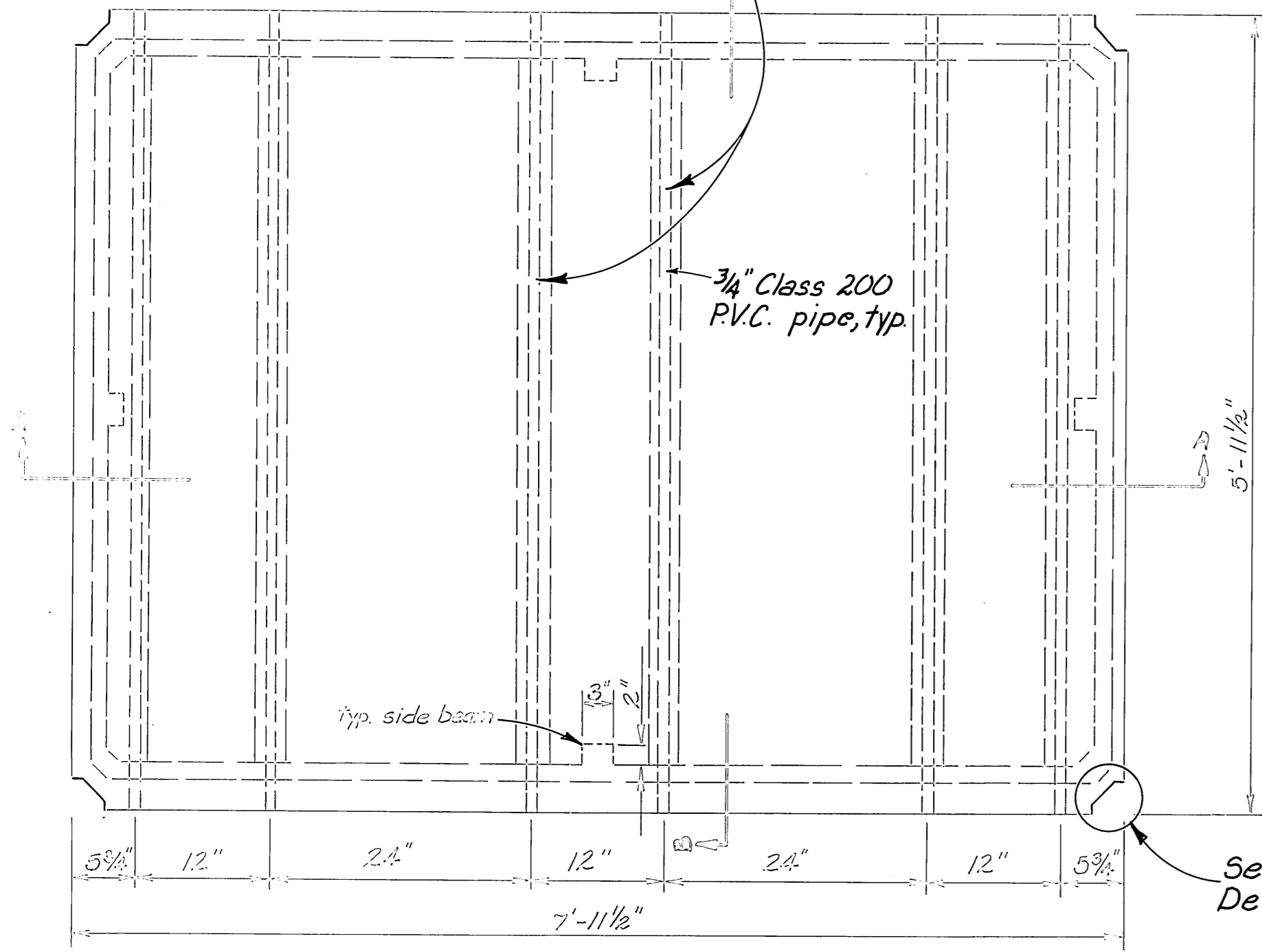
Note: 1. Hinge, Hinge Plates & Undamaged Timber to be Retained for Reuse Where Applicable.



Concrete Filler Slab Detail

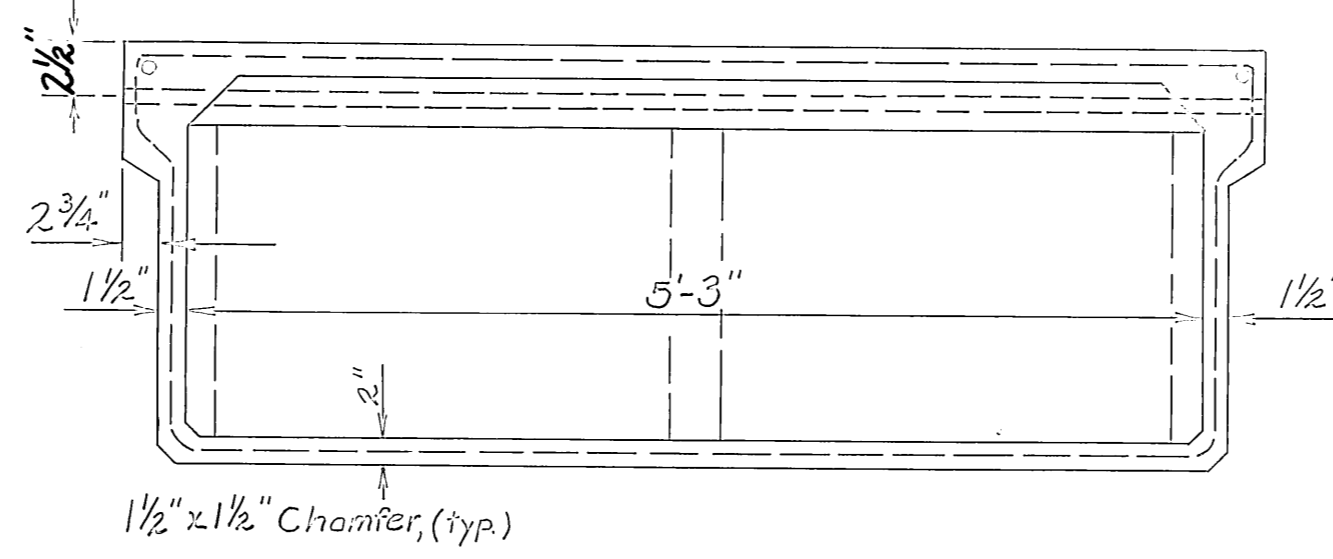
STAMP		DO NOT SCALE THIS DRAWING - USE DIMENSIONS	
STATE OF ALASKA DEPARTMENT OF TRANSPORTATION AND PUBLIC FACILITIES			
FLOAT REPLACEMENT PLAN & DETAILS			
DESIGNED RB	CHECKED RB	DRAWN MC	DATE MAR 1984
PROJECT NUMBER X-30211	SHEET 3		OF 4

Replace  $\frac{3}{4}$ "  $\phi$  x 7'-0 $\frac{1}{2}$ " Thru-rods  
Salvage and reuse remaining  
thru-rods where possible.



Plan

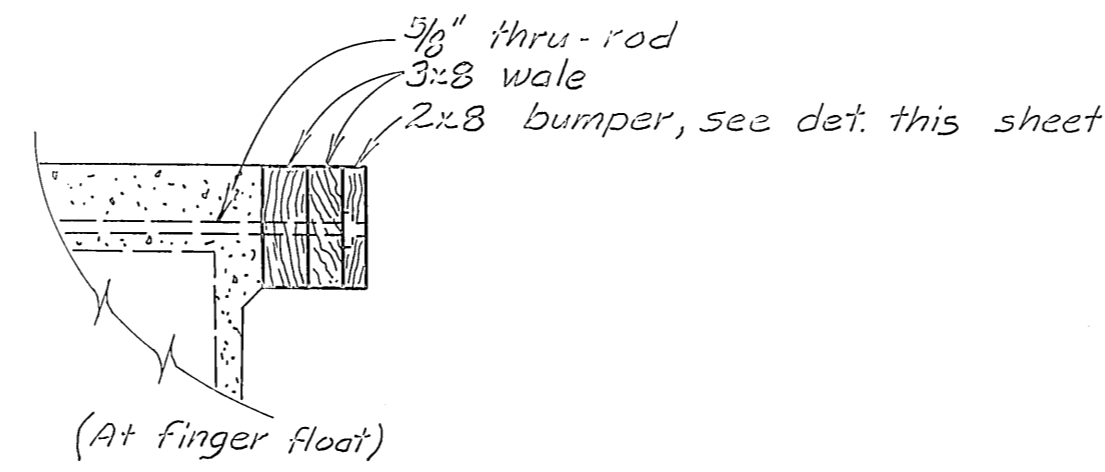
See Block out  
Det. Sht. 3.



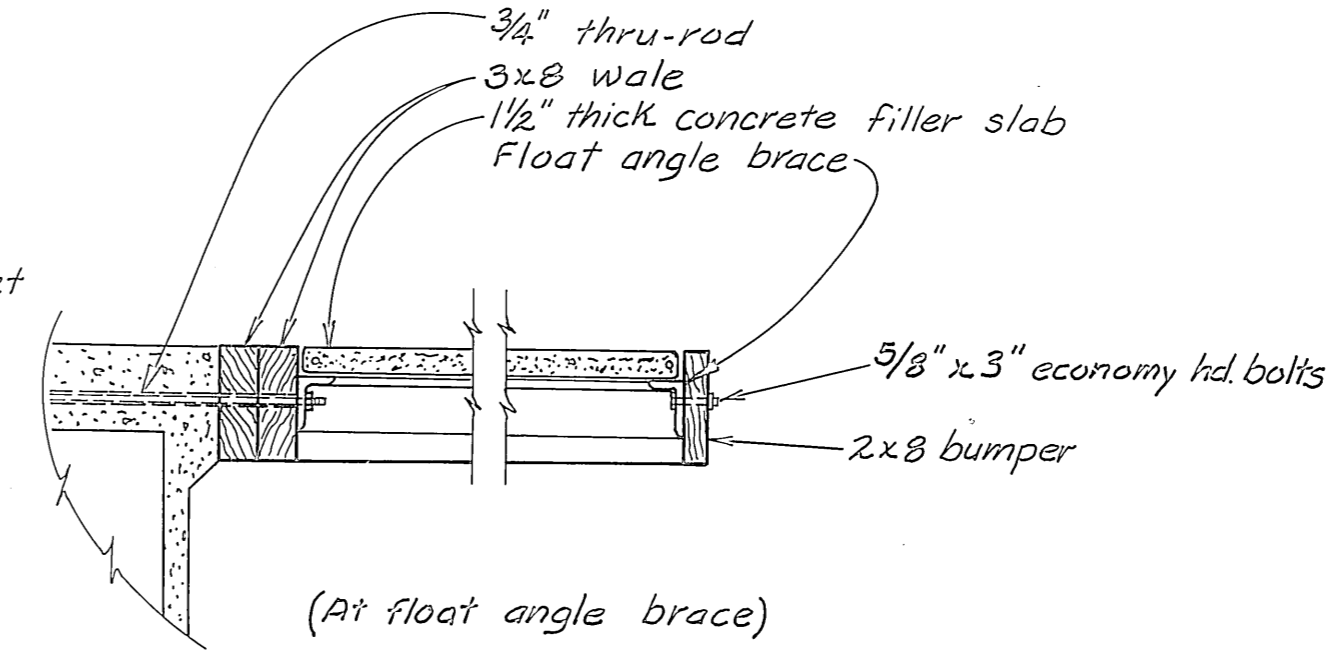
Section B-B

1 $\frac{3}{4}$ " drill & 3 $\frac{1}{4}$ " x  $\frac{1}{2}$ " deep  
counter bore

TYPICAL BUMPER BOARD

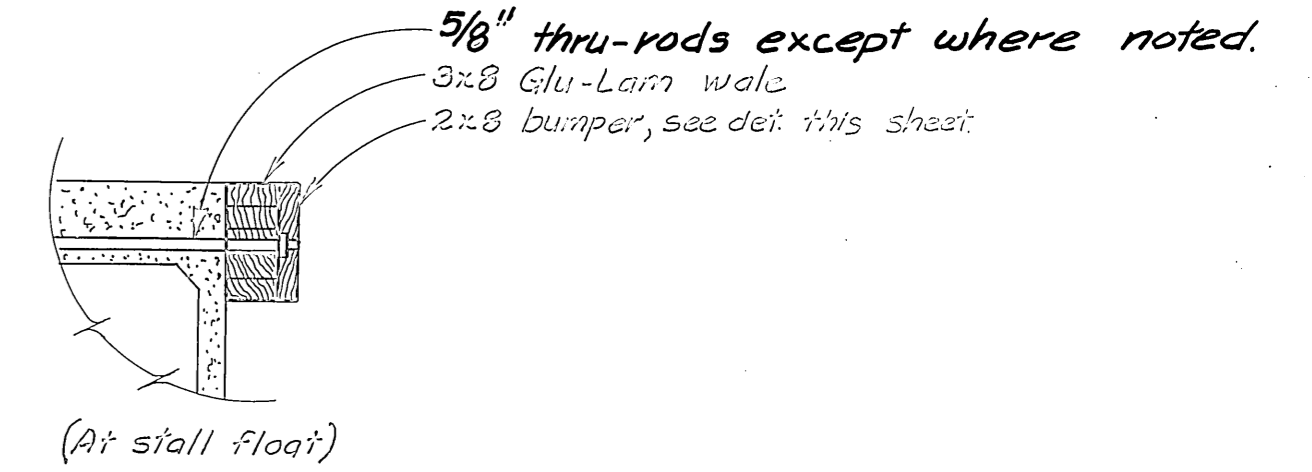


(At finger float)



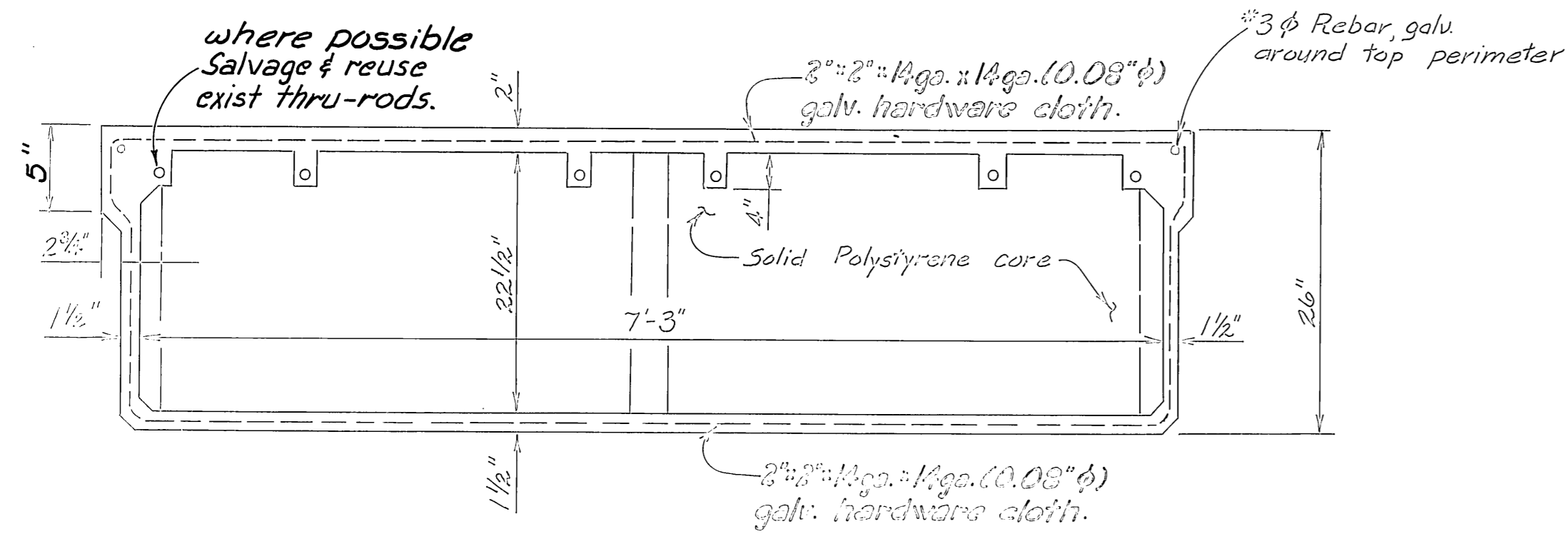
(At float angle brace)

TYPICAL WALE ASSEMBLY



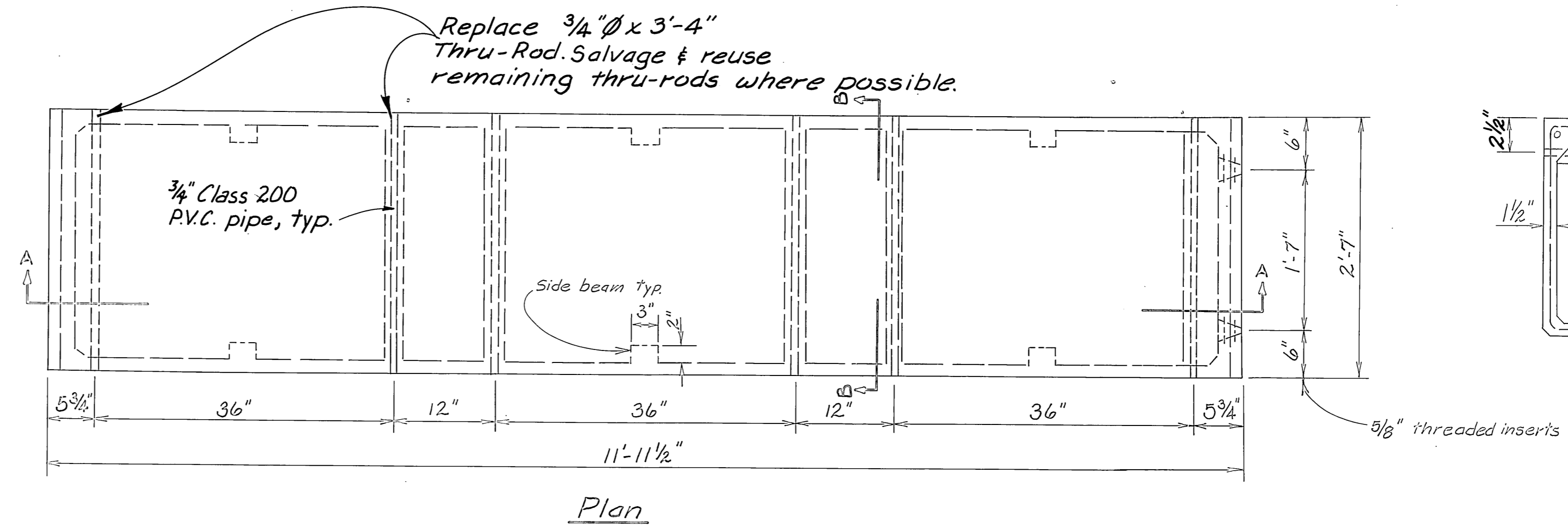
(At stall float)

TYPICAL GLU-LAM ASSEMBLY

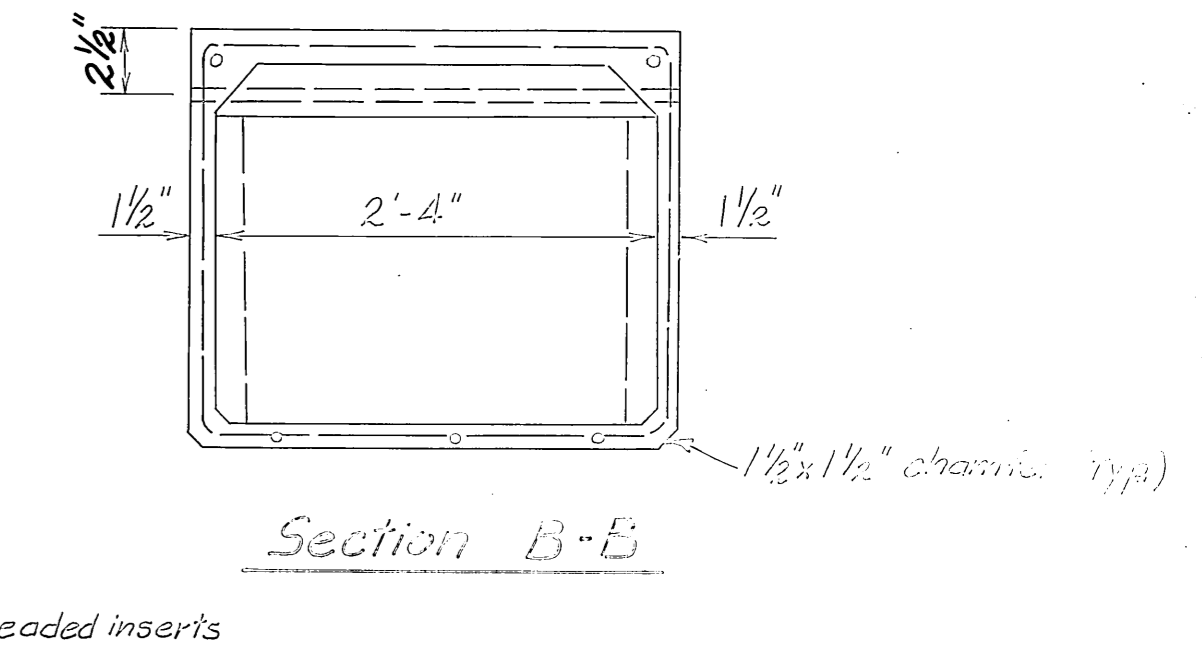


Section A-A

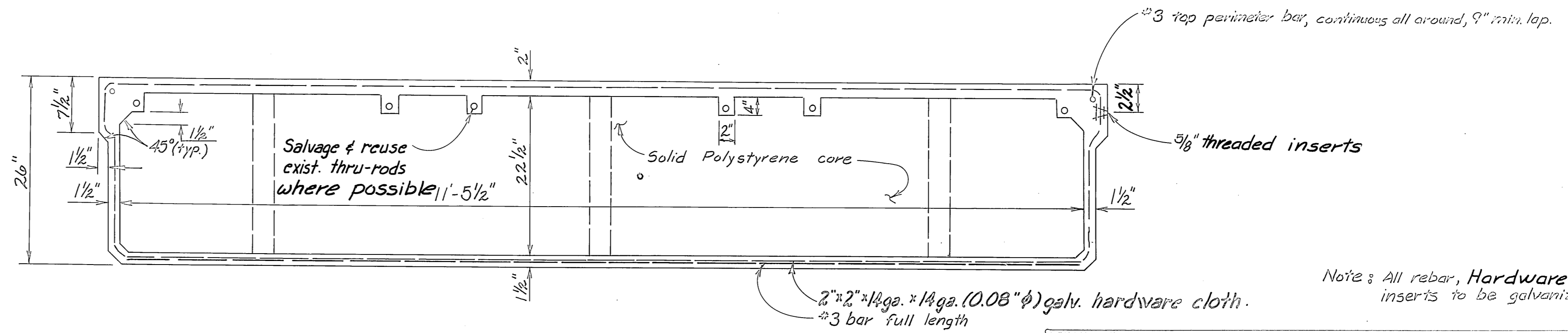
6x8 STANDARD FLOAT



Plan



Section B-B



Section A-A

3x12 STANDARD STALL FLOAT

Note: All rebar, Hardware cloth & threaded  
inserts to be galvanized. (hot dipped)

	DO NOT SCALE THIS DRAWING - USE DIMENSIONS			
	STATE OF ALASKA DEPARTMENT OF TRANSPORTATION AND PUBLIC FACILITIES			
	6'x8' & 3'x12' STANDARD FLOAT UNITS			
	DESIGNED RB	CHECKED RB	DRAWN MC	DATE MARCH 1984
PROJECT NUMBER X-30211		SHEET 4 OF 4		