

**STATE OF ALASKA**  
**DEPARTMENT OF TRANSPORTATION**  
**&**  
**PUBLIC FACILITIES**

---

**PLAN AND PROFILE**  
**PROPOSED HIGHWAY PROJECT**  
**SOS-3(006)**  
**FLOYD DRYDEN ENTRANCE ROAD**  
**JUNEAU**  
**GRADING, DRAINAGE AND**  
**PAVEMENT**  
*AS BUILT PLANS*

Contractor: Red Samm Const. Co.  
 Bids Opened: June 15, 1978  
 Beginning Date: July 25, 1978  
 Accepted for Traffic & Maint: Aug. 22, 1978

STATE	PROJECT	SHEET NO.	TOTAL SHEETS
ALASKA	SOS-3(006)	1	3

INDEX OF SHEETS	
SHEET NO.	DESCRIPTION
1	TITLE SHEET
2	TYPICAL SECTION & ESTIMATE OF QUANTITIES
3	PLAN & PROFILE

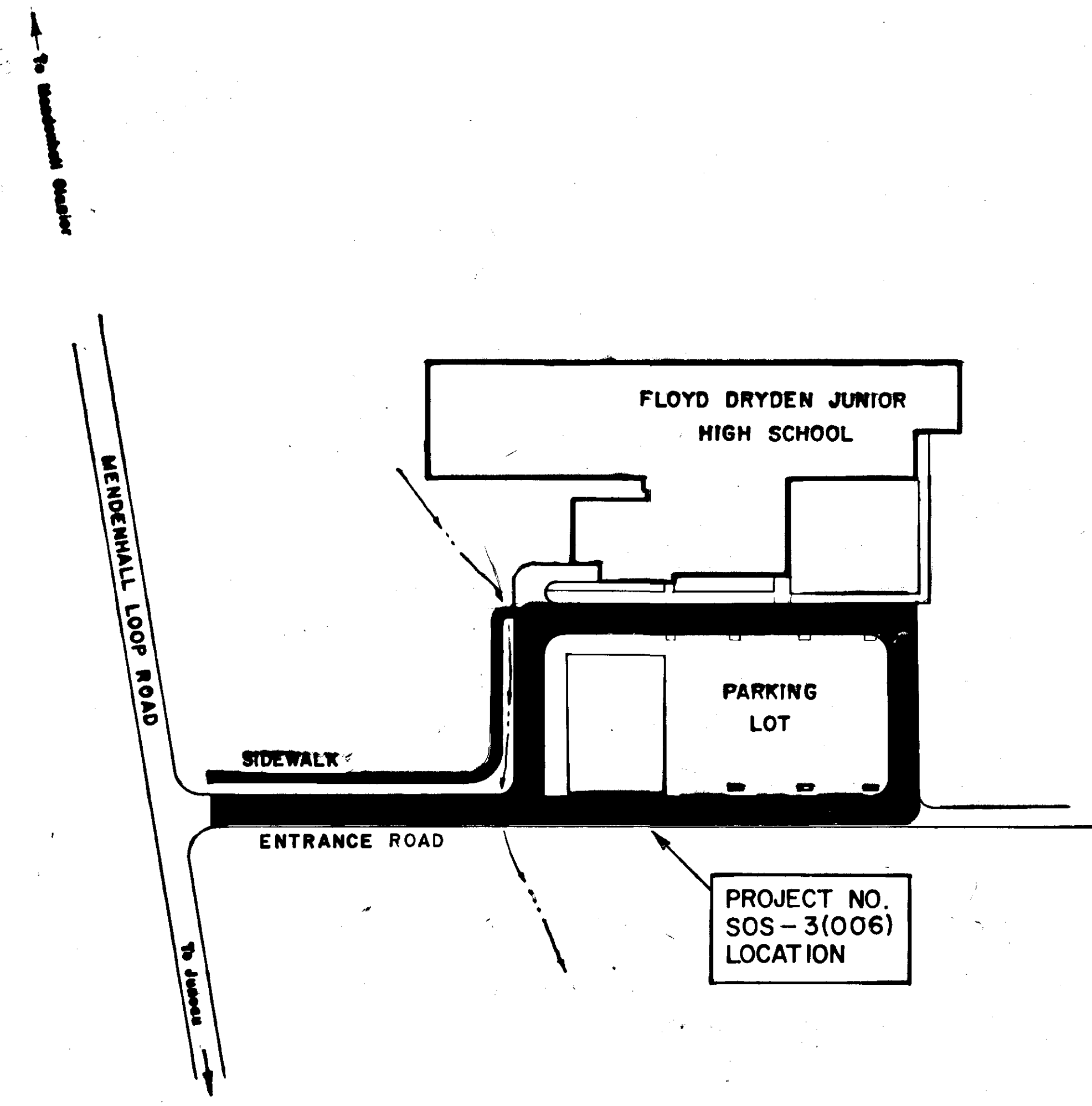
The following Standard Drawings apply to this project:  
 A-1, C-10.02, C-11.02, D-02.02

**PROJECT SUMMARY**

WIDTH OF SURFACING = 30 Ft.  
 LENGTH OF GRADING = 1430 Ft. = 0.27 Miles  
 LENGTH OF PAVING = 1430 Ft. = 0.27 Miles  
 LENGTH OF PROJECT = 1430 Ft. = 0.27 Miles

**DESIGN DESIGNATION**

ADT 1978 = 553  
 ADT 1998 = 822  
 DHV 16% = 132  
 D = 60-40  
 T = 10%  
 T.I. = 6



STATE OF ALASKA  
 DEPARTMENT OF TRANSPORTATION  
 &  
 PUBLIC FACILITIES

APPROVED  
 [Signature]  
 SOUTHEASTERN REGION  
 DESIGN / CONSTRUCTION ENGINEER

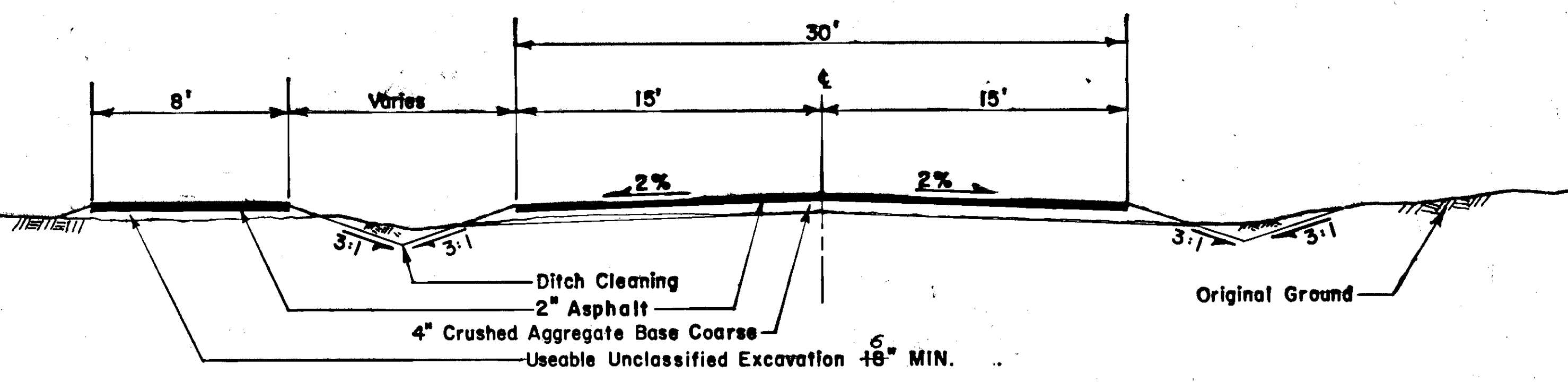
Date 5/1/78

STATE OF ALASKA  
 DEPARTMENT OF TRANSPORTATION  
 &  
 PUBLIC FACILITIES

APPROVED  
 [Signature]  
 DIRECTOR-HIGHWAY DESIGN & CONSTRUCTION

Date 5/1/78

**TYPICAL SECTION**



Sta. 50 + 50 to Sta. 53 + 36

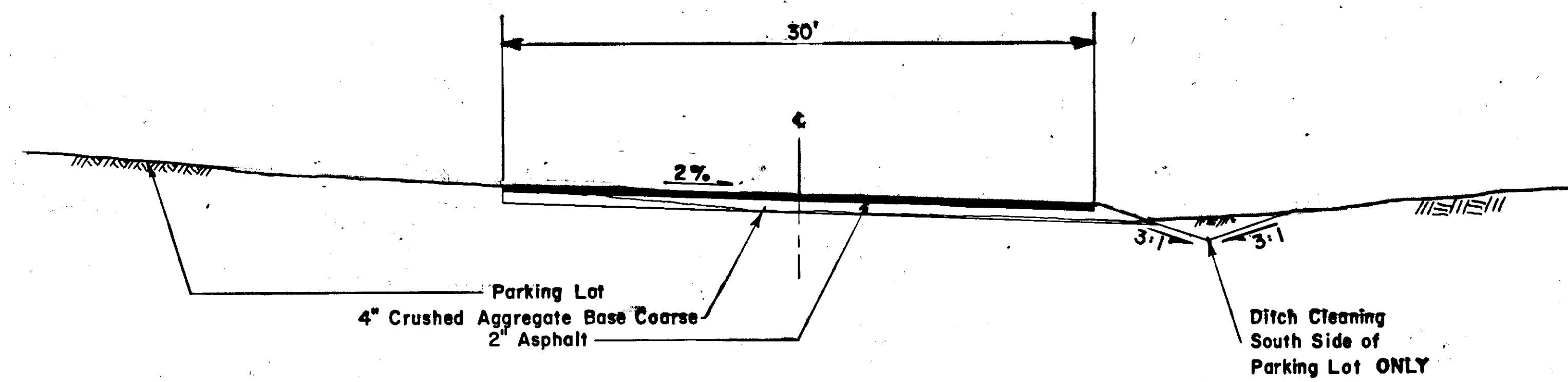
ESTIMATE OF QUANTITIES			
Item No.	Item	Unit	Quantity
110(1)	Mobilization	L.S.	All Req'd
111(1)	Temp., Erosion & Pollution	C.S.	All Req'd
114(1)	Construction Engineering by the Contractor	L.S.	All Req'd
201(1)	Unclassified Excavation	Cu. Yd.	1,150
301(1)	Crushed Aggregate Base Course	Ton	1,100
401(1)	Hot Asphalt Pavement Class I	Ton	525
401(2)	AC-5 Asphalt Cement	Ton	32
603(22G)	24" Pipe Conduit	L.F.	28
608(1C)	Concrete Sidewalk 6" Depth	L.S.	All Req'd

BASIS OF ESTIMATE	
Item No.	Estimating Factor
301(1)	1.96 Tons/Cu. Yd.
401(1)	112 Lbs./Sq. Yd./In. Depth
401(2)	6% of 401(1)

CULVERT SUMMARY		
Station	24"	Remarks
(See Note)	28 Ft.	Sidewalk

Note: Station as directed by Engineer

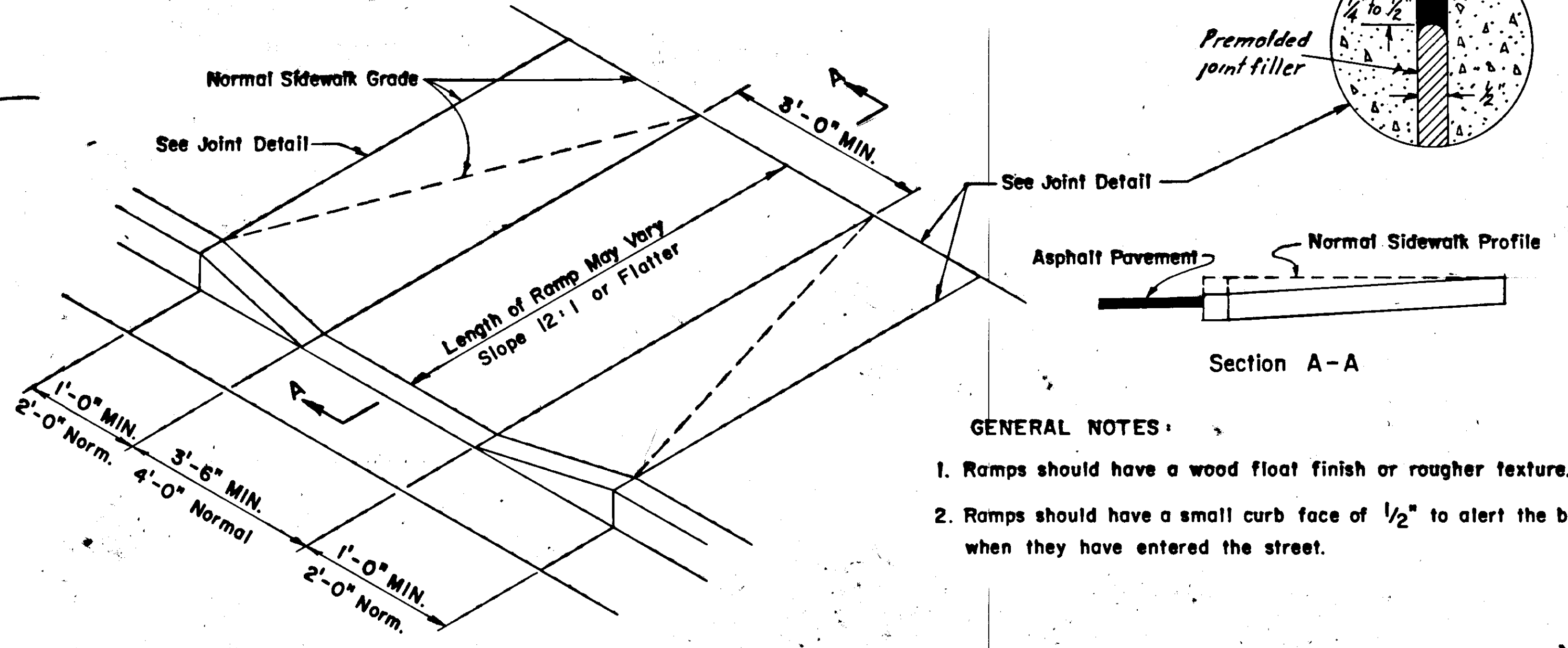
**TYPICAL SECTION**



Sta. 53+36 to Sta. 57+12 and Parking Lot Loop

NOTE: Useable Unclassified to come from Roadway and Ditch Grading  
 Unclassified Excavation in excess of the amount required for the sidewalk will be wasted at locations of the contractor's choice with approval of the Engineer.

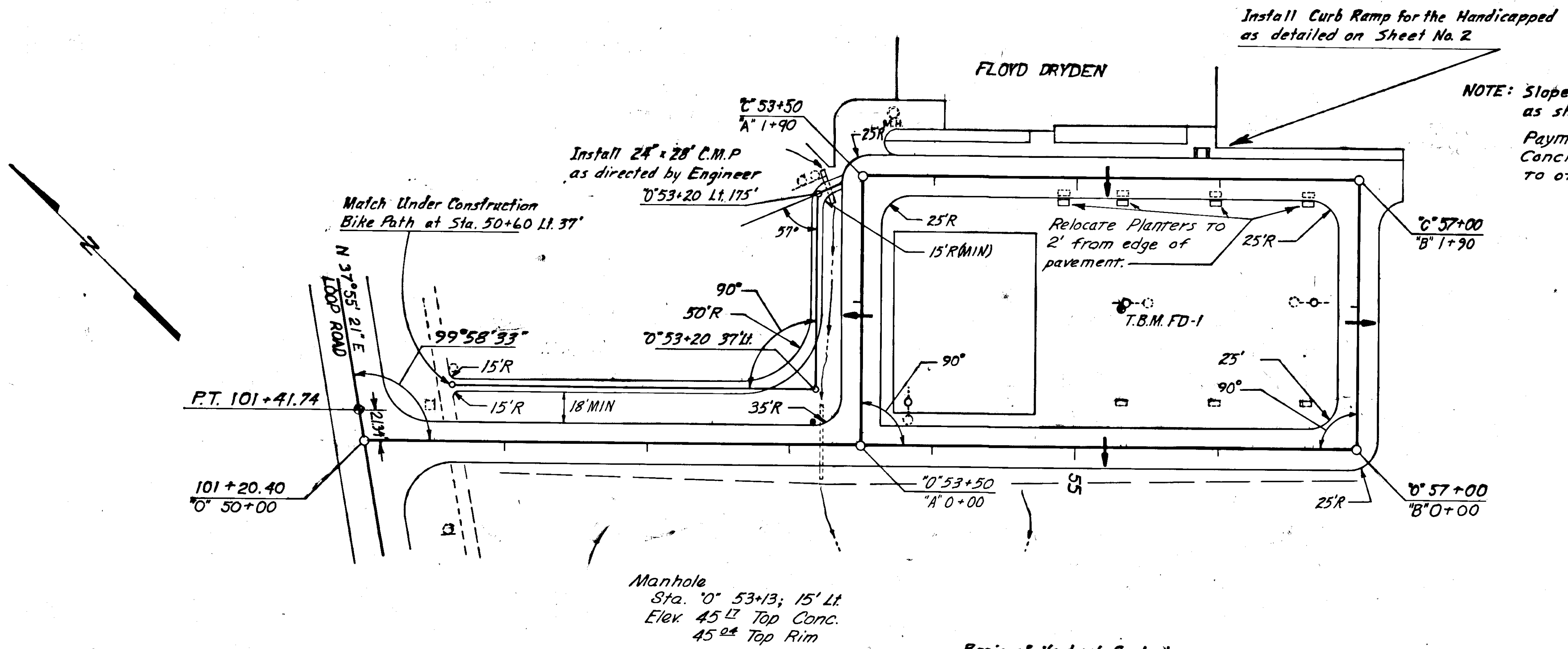
**CURB RAMP FOR THE HANDICAPPED**



**GENERAL NOTES:**

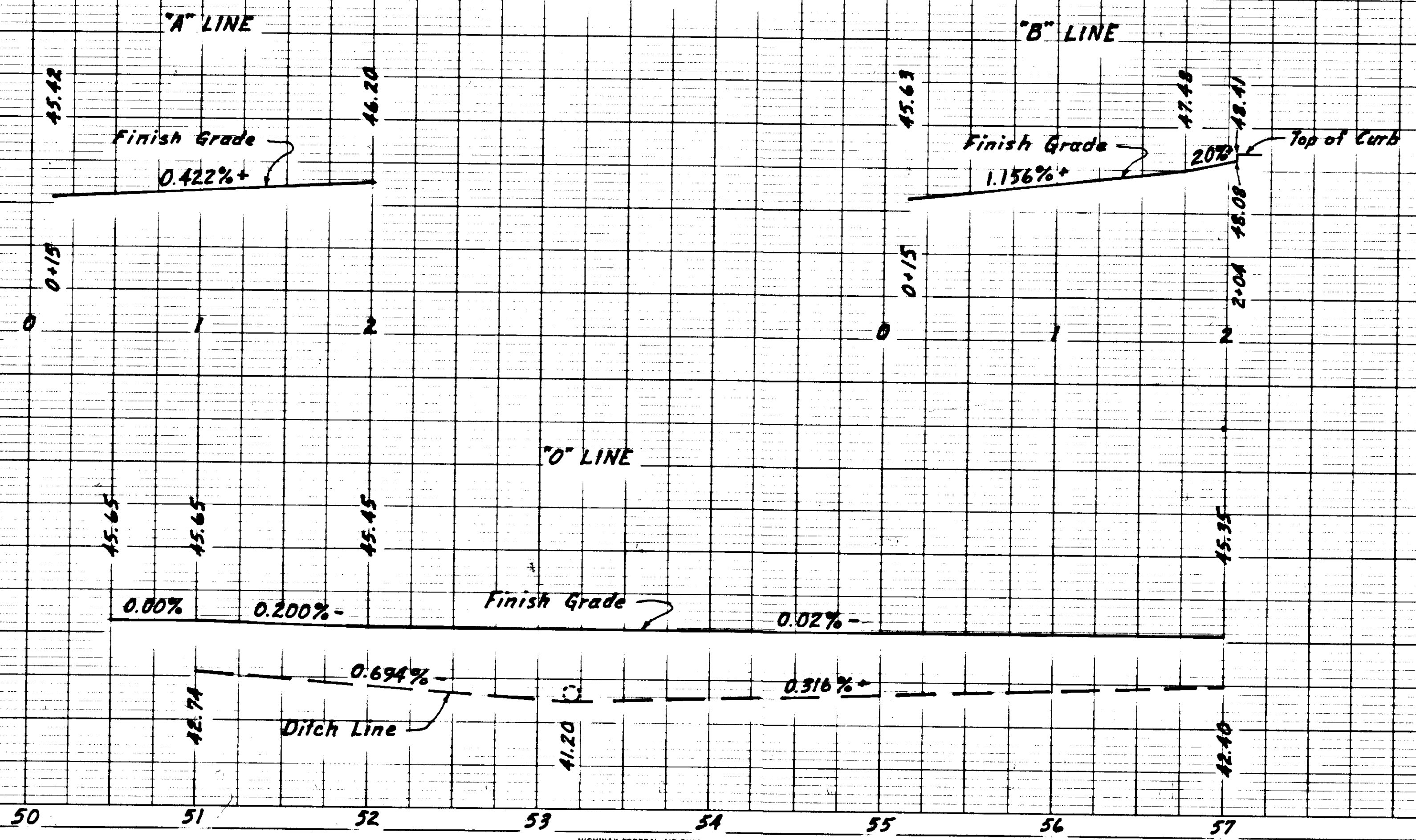
- Ramps should have a wood float finish or rougher texture.
- Ramps should have a small curb face of 1/2" to alert the blind when they have entered the street.

STATE	PROJECT	SHEET NO.	TOTAL SHEETS
ALASKA	SOS-3(006)	3	3



Basis of Vertical Control:  
T.B.M. FD-1 Located at Southwest Corner of Concrete Base  
of Light Pole. 101' Lt. of E at Sta 55+36 Elevation 48.20'

NOTE: MATCH EXISTING CURB LINE IN FRONT OF SCHOOL  
4" Below Top of Curb



SCALE:  
VERT. = 1" = 5'  
HORIZ. = 1" = 50'