

MICROFILMED

STATE	PROJECT DESIGNATION	YEAR	SHEET NO.	TOTAL SHEETS
ALASKA	S-0959 (1)	1965	1	29

TYPE OF IMPROVEMENT 6201

BY *[Signature]* DATE 7-8-66

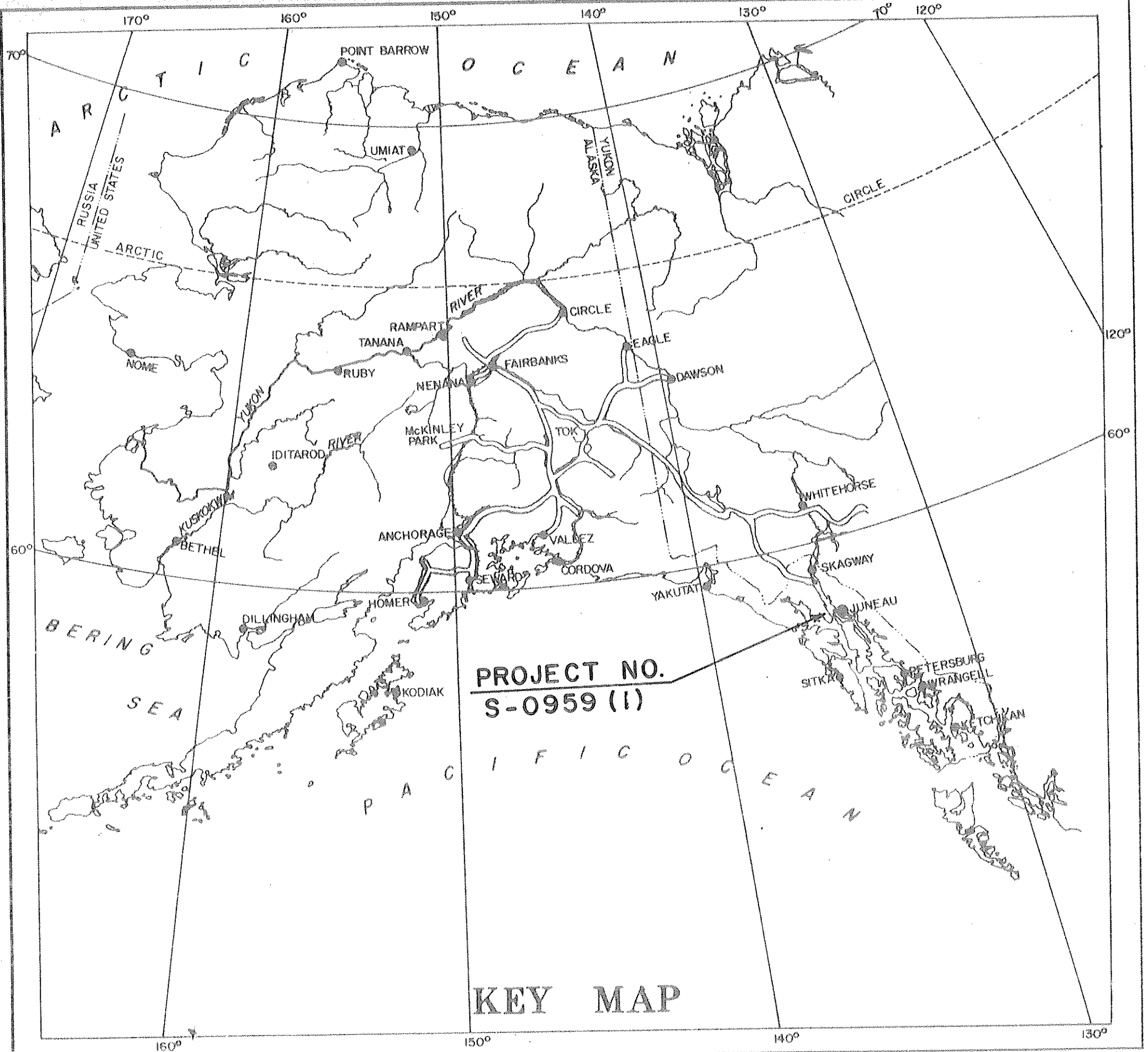
STATE OF ALASKA
DEPARTMENT OF HIGHWAYS

PLAN AND PROFILE
PROPOSED HIGHWAY PROJECT

S-0959(1)

NORTH DOUGLAS HIGHWAY
COWEE CREEK 3.5 MILES NORTH
GRADING, DRAINAGE, & PAVING

"As-Built" Plans

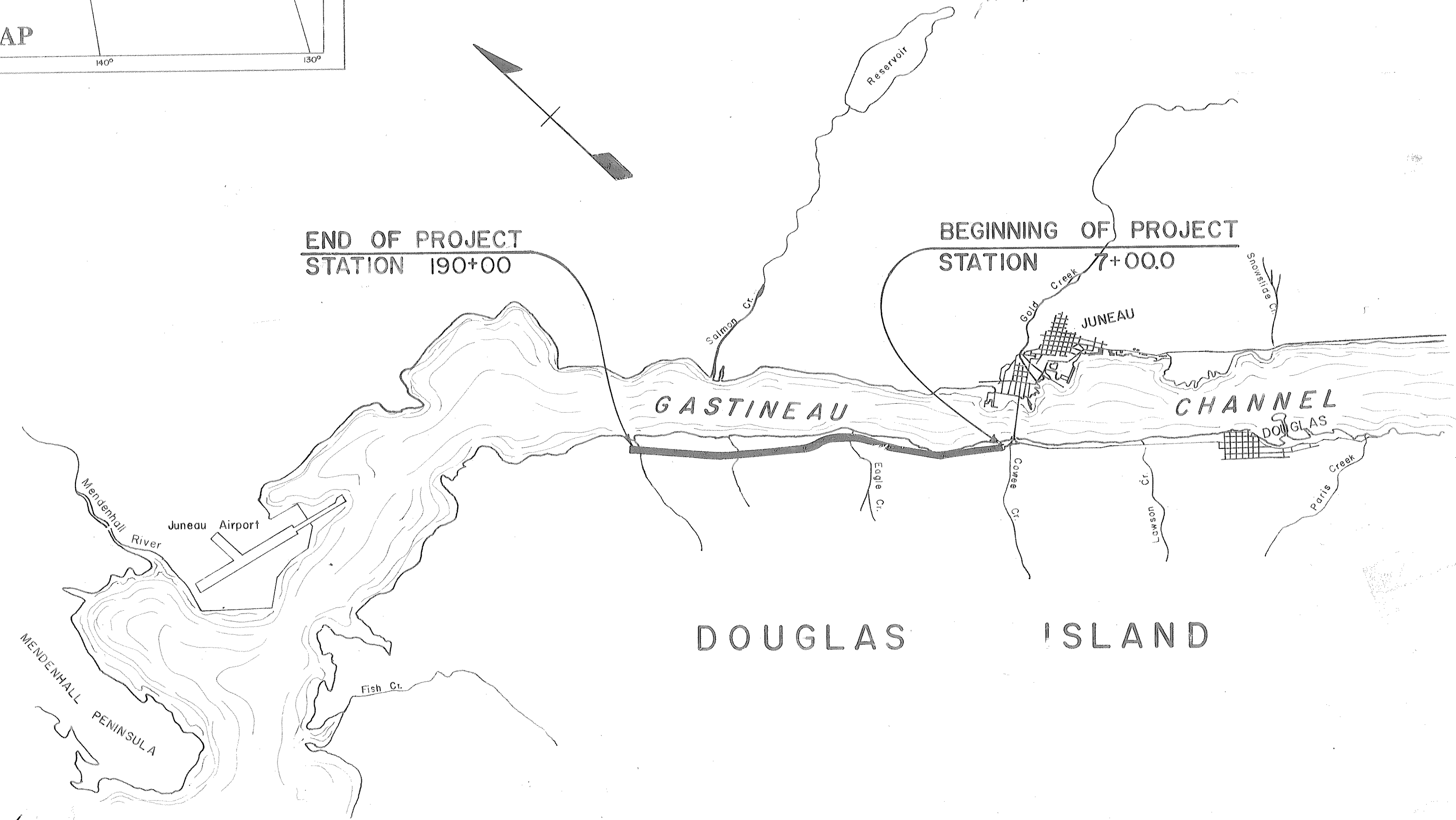


INDEX OF SHEETS

SHEET NO.	DESCRIPTION
1	TITLE SHEET
2	TYPICAL SECTIONS & EST. OF QUANTITIES
3-10	PLAN AND PROFILE SHEETS
11-22	CULVERTS AND MISCELLANEOUS WORK
23	SUMMARY OF BRASS CAP MONUMENTS
24	SUMMARY OF STANDARD SIGNS
S-1	STANDARD CULVERTS
S-3	STANDARD APPROACHES
S-6	STANDARD PROJECT IDENTIFICATION SIGN
S-8	STANDARD GUARDRAIL
S-11-A	STANDARD HEADWALLS

DESIGN DESIGNATION

	F.A.P. 95 to Eagle Creek	Eagle Creek to End of Project
ADT (1962) =	925	540
ADT (1982) =	2,775	1,890
DHV =	12 %	12 %
D =	60 %	60 %
T =	5 %	5 %
V =	50 m.p.h.	50 m.p.h.



- CONVENTIONAL SIGNS
- PROPOSED CONSTRUCTION CENTERLINE
 - PRELIMINARY SURVEY LINE
 - TOWNSHIP LINE
 - SECTION LINE
 - PROPERTY LINE
 - RIGHT-OF-WAY LINE
 - EASEMENT LINE
 - CORPORATED OR CITY LIMITS
 - POWER LINE
 - TELEPHONE OR TELEGRAPH LINE
 - POLE ANCHOR
 - LIGHT POLE
 - WATER LINE
 - SEWER LINE
 - VALVE BOX
 - CATCH BASIN
 - DROP INLET
 - MANHOLE
 - CULVERT PROPOSED
 - CULVERT EXISTING
 - FIRE HYDRANT
 - TRAVELED WAY
 - SWAMP
 - FENCE
 - CURB CUT
 - LAND MONUMENT
 - RIGHT-OF-WAY MONUMENT
 - SIGNS

PROJECT SUMMARY

WIDTH OF SUBGRADE	34'
WIDTH OF PAVING	18,315.74' = 3.469 Mi
LENGTH OF GRADING	18,316.96' = 3.469 Mi
LENGTH OF PAVING	18,316.96' = 3.469 Mi
LENGTH OF PROJECT	18,316.96' = 3.469 Mi
TEMPORARY CONNECTION	Sta. 5+47.2 to 7+00 = 152.8 Ft.
	Sta. 190+00 to Sta. 191+27.90 = 127.9 Ft.
	189+98.34 to 191+50 = 150 FT

STATE OF ALASKA DEPARTMENT OF HIGHWAYS

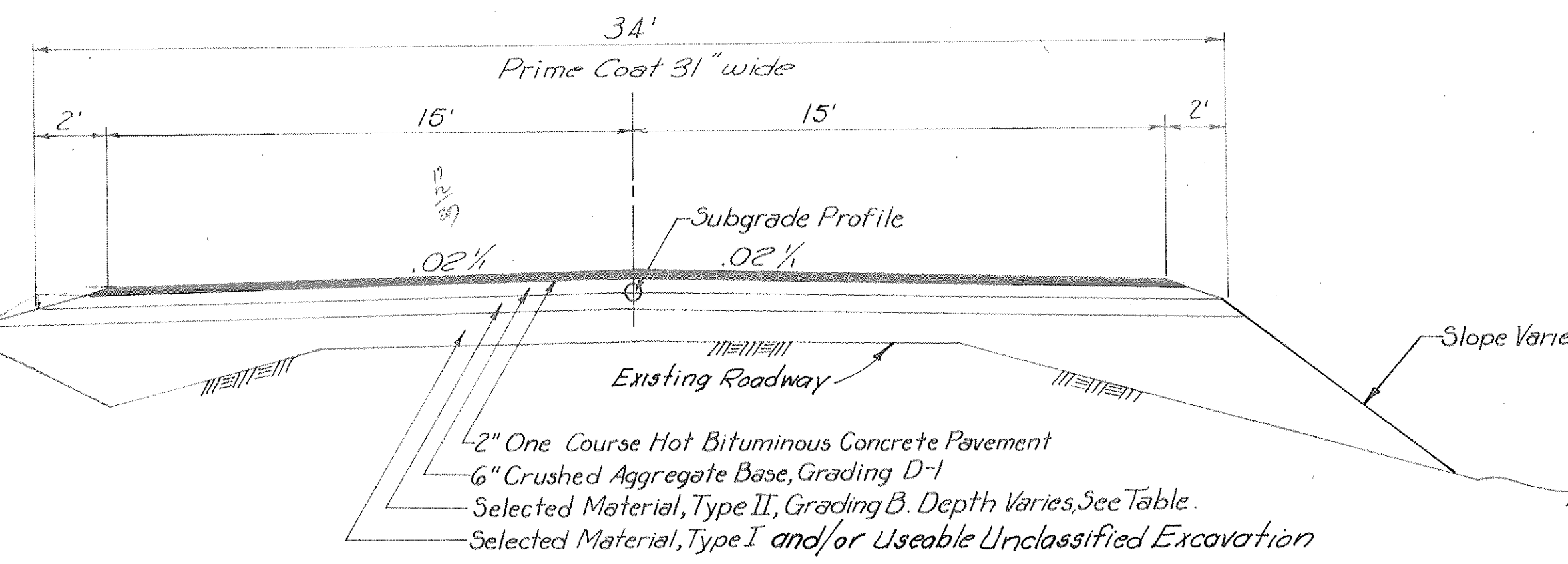
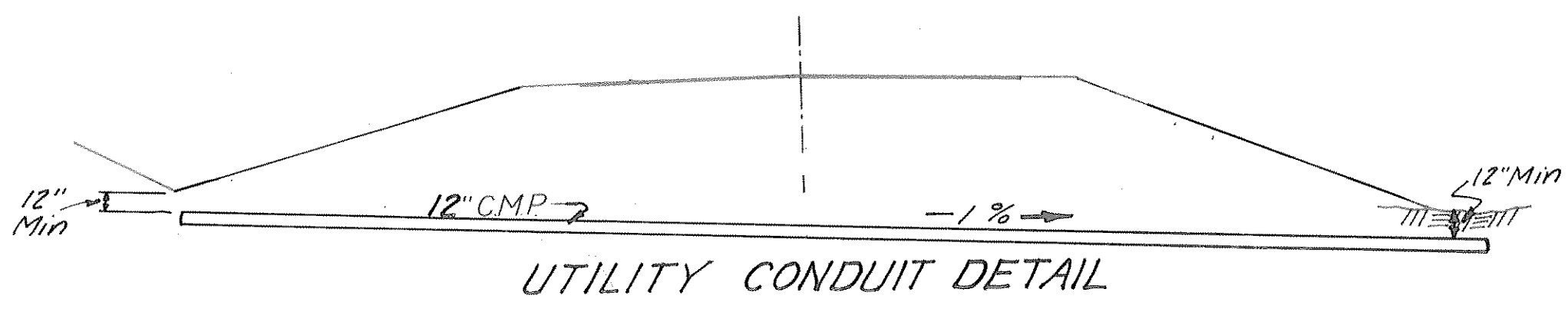
APPROVED *[Signature]* Date 2/15/65
COMMISSIONER OF HIGHWAYS

APPROVED _____ Date _____
REGIONAL ENGINEER
BUREAU OF PUBLIC ROADS
REGION TEN

TYPICAL SECTION & ESTIMATE OF QUANTITIES

MICROFILMED

STATE	PROJECT DESIGNATION	YEAR	SHEET NO.	TOTAL SHEETS
ALASKA	5-0959(1)	1965	2	29



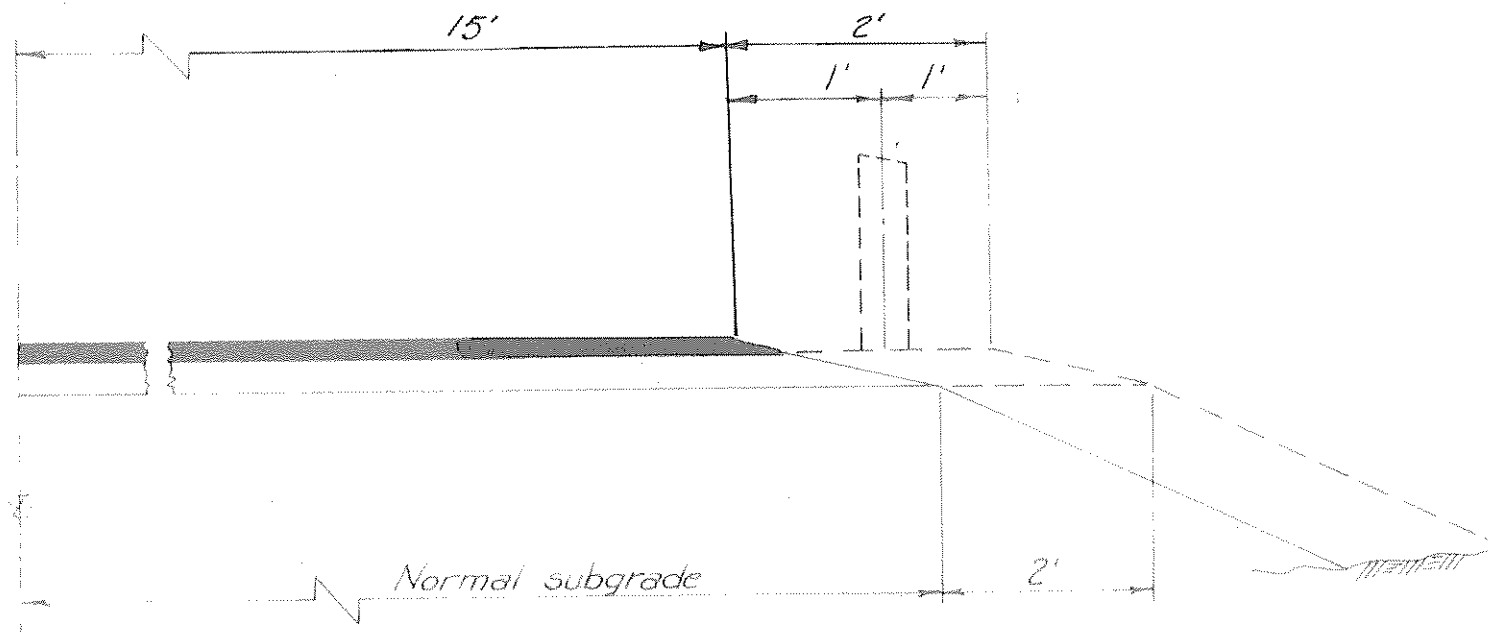
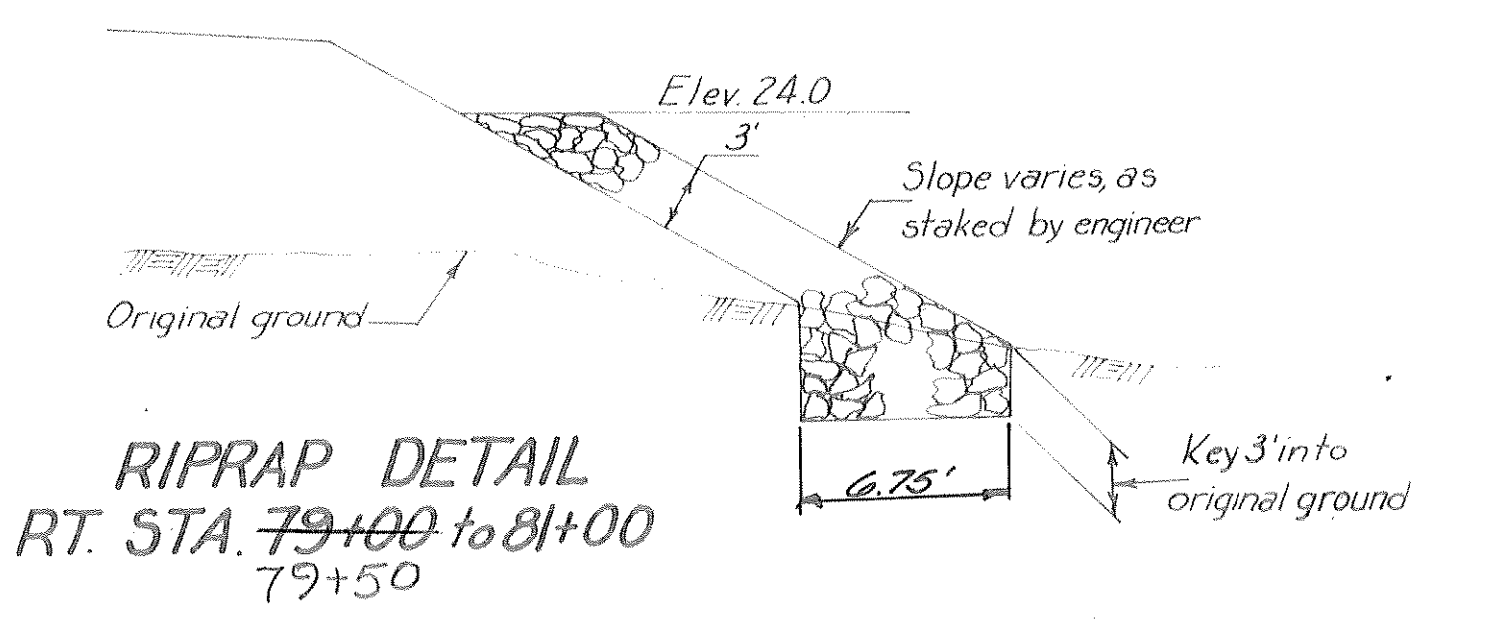
CUT-FILL HEIGHT	Slope
0-4	4:1
4-10	3:1
10-15	2:1
Over 15	1 1/2:1

Or as directed by the engineer.

Sta. to Sta.	Depth
5+46.8 to 65+00	12"
65+00 to 102+27.4	6"
102+27.4 to 191+27.9	12"

GENERAL NOTES

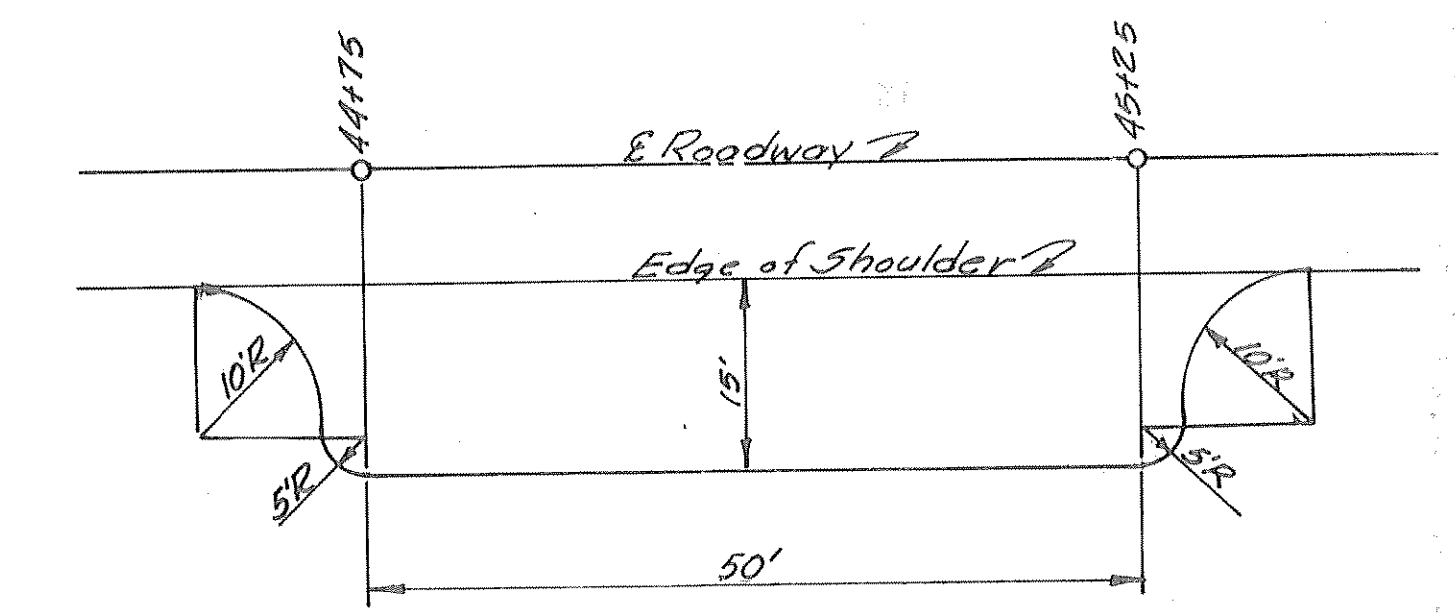
- Culvert lengths are approximate only and are subject to minor revisions.
- Grades shown on these plans are subject to minor revisions.
- Waste material will be disposed of at locations acquired by the contractor and approved by the engineer.
- Locations of existing utilities are approximate only.
- Clearing and grubbing limits shall be a neat line, established by the engineer, at least 5 feet outside the slope limits or to the right-of-way line, whichever is less.
- Utility conduits will be installed under the roadway wherever existing water lines or sewer lines are in the roadway prism.
- Fences and other miscellaneous encroachments within the clearing and grubbing limits shall be removed by the contractor and disposed of in a manner satisfactory to the engineer. No payment for this work shall be made. It will be considered as incidental to section 100, clearing and grubbing.
- All approaches shall be surfaced to the right-of-way line, or as directed by the engineer.
- All utility poles within the slope limits shall be moved by others.
- The cleared area of the existing road shall not be measured for clearing and grubbing.
- All curves are based on a 1° curve with a radius of 5729.578'.



Sta to Sta	Lt	Rt
63+50 to 67+50		100'
63+57.5 to 66+70		312.5'
77+50 to 80+80		325'
77+55		
94+00 to 94+00	7.5'	
94+40 to 94+90	50'	125.0'
94+40 to 95+00		62.5'
94+35 to 95+60		
137+50 to 138+50	100'	100'
137+55 to 138+85	150'	95' Below
182+50 to 184+50	200'	200'
182+75 to 184+90	125'	See Below
Total Lin Ft = 1,462.5		
137+20 to 138+70		150'
182+30 to 184+55		225'

ESTIMATE OF QUANTITIES

Item No.	Quantity	Unit	Item
10	All Req'd	Lump Sum	Misc. force account work as authorized in Art. 94 and 95
100(3)	12	Acre	Clearing and grubbing
102(1)	54,500	Cu. Yd.	Unclassified excavation
102(7i)	25,200	Ton	Selected material, type I borrow, case 2
102(7ai)	60,800	Ton	Selected material, type II borrow, case 2, grading B
103(1)	4,850	Cu. Yd.	Excavation for structures
200(4)	24,500	Ton	Crushed aggregate base, grading D-1
305(2A)	1,000	Ton	Stockpiled material, section 200, grading D-1
310(3)	21,900	Gal.	Asphalt, grade MC-70, prime coat
322(1)	7900	Ton	Hot bituminous concrete pavement
322(2)	119,500	Gal.	Asphalt cement, 120-150 penetration
406(1)	0.8	Cu. Yd.	Class A concrete
453(5c)	284	Lin. Ft.	12" Corrugated metal pipe
453(5e)	1,556	Lin. Ft.	18" Corrugated metal pipe
453(5g)	4,284	Lin. Ft.	24" Corrugated metal pipe
453(5h)	114	Lin. Ft.	30" Corrugated metal pipe
453(5i)	322	Lin. Ft.	36" Corrugated metal pipe
453(5k)	130	Lin. Ft.	48" Corrugated metal pipe
453(5m)	128	Lin. Ft.	60" Corrugated metal pipe
455(1z)	94	Lin. Ft.	Structural plate pipe, 108 inch diameter, 10 gage
455(1L)	162	Lin. Ft.	Structural plate pipe, 126 inch diameter, 5 gage
455(2v)	104	Lin. Ft.	Structural plate pipe arch, 12'-8" span, 8'-1" rise, 8 gage
457(1)	5,147	Lin. Ft.	Removal of culverts
470(1)	All Req'd	Lump Sum	Removal of bridge
510(2)	1,045	Ton	Loose riprap
560(5)	21	Each	Brass cap monuments
561(1)	21	Each	Monument cases
583(1)	1,462.5	Lin. Ft.	Beam-type guardrail
584(1)	11	Each	Standard signs

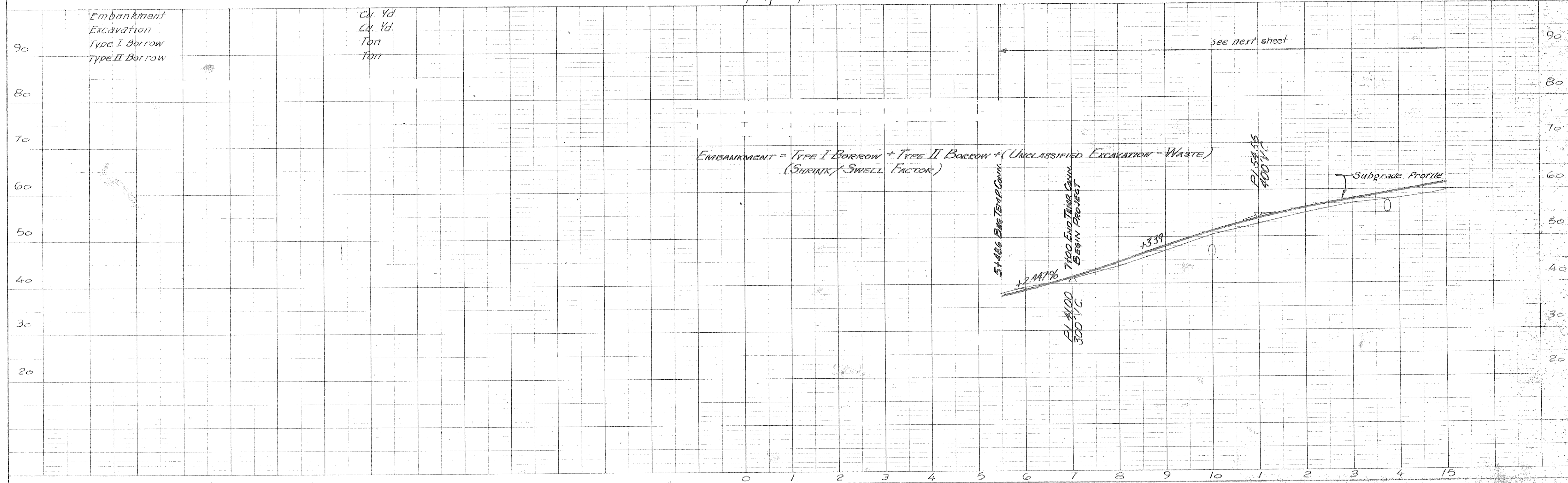
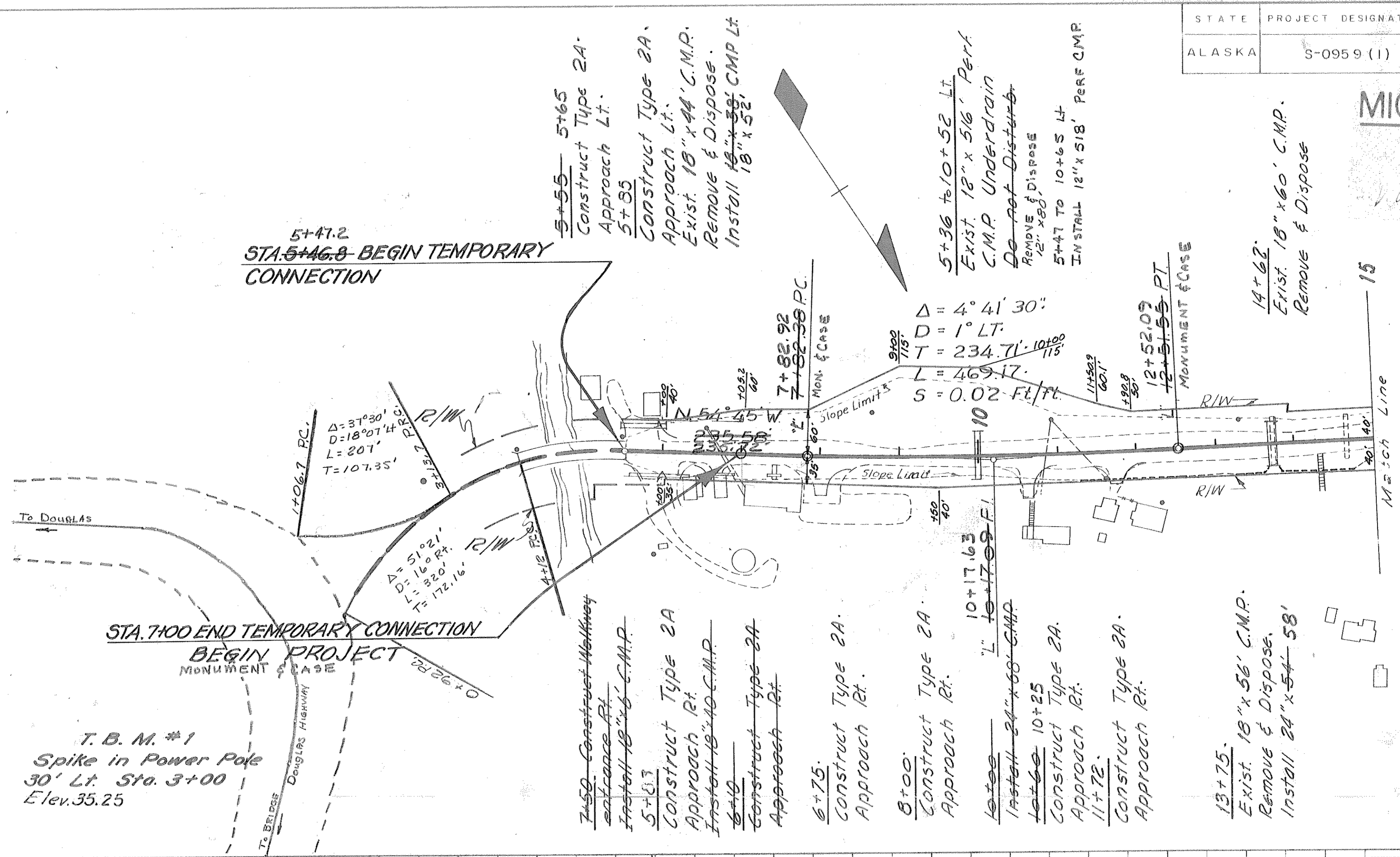


PARKING AREA RT. 44+75 to 45+25
 Note: Parking area is to be constructed on the same grade & cross slope as the main line roadway.

STATE	PROJECT DESIGNATION	YEAR	SHEET NO.	TOTAL SHEETS
ALASKA	S-0959 (1)	1965	3	29

MICROFILMED

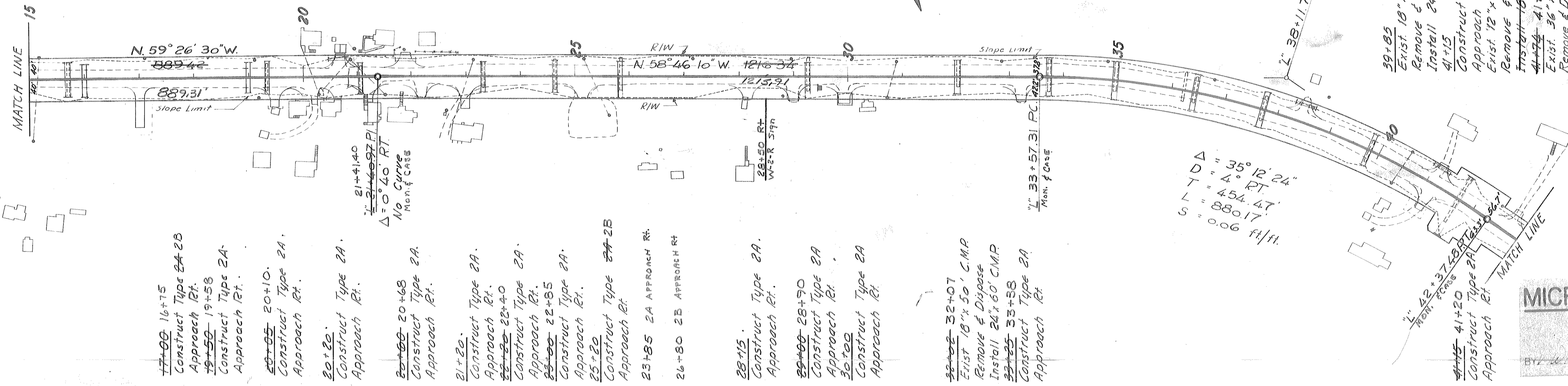
NOTES:
 Elevations throughout this project were established with reference to the Brass Cap located 30 ft. left of Sta. 98+55 near the North City Limits of Douglas. The elevation of T.B.M. #1 thus established is 35.25 feet.
 The elevation of T.B.M. #1 with reference to M.L.L.W. is 37.88 feet.
 Transition from existing roadway width at Sta. 5+46.8 to full width construction at Sta. 7+00.



PLAN

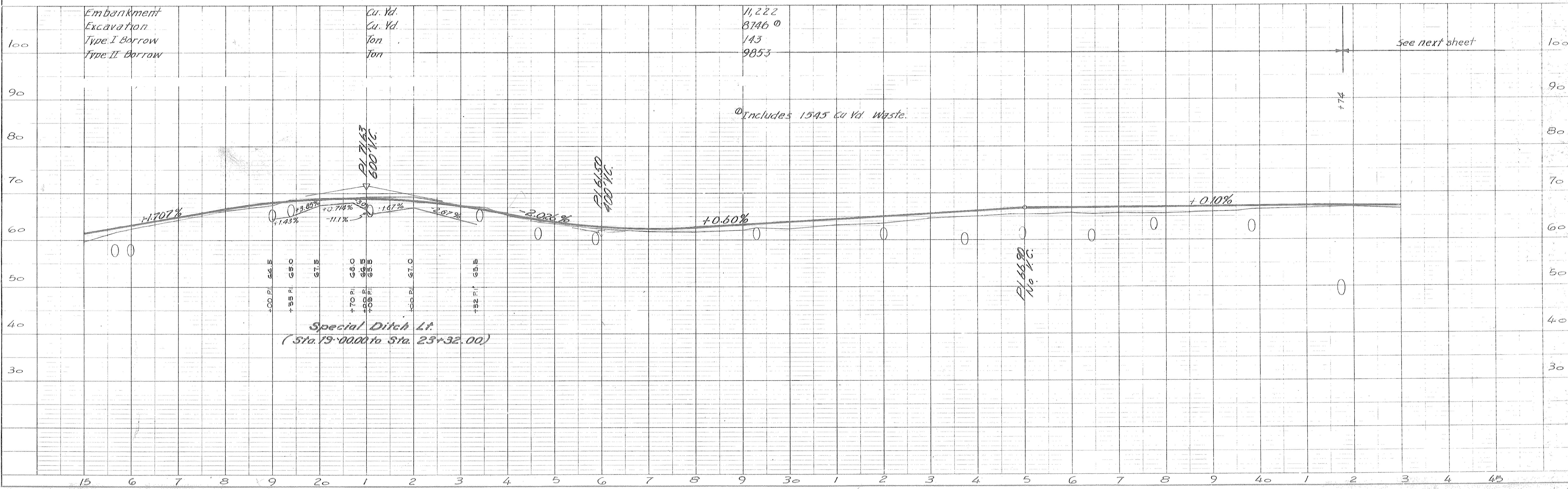
PROFILE

PLAN



MICROFILMED
 BY: [Signature] DATE: 9-8-06

PROFILE



STATE	PROJECT DESIGNATION	YEAR	SHEET NO.	TOTAL SHEETS
ALASKA	S-0959 (1)	1965	5	29

MICROFILMED
9-8-06

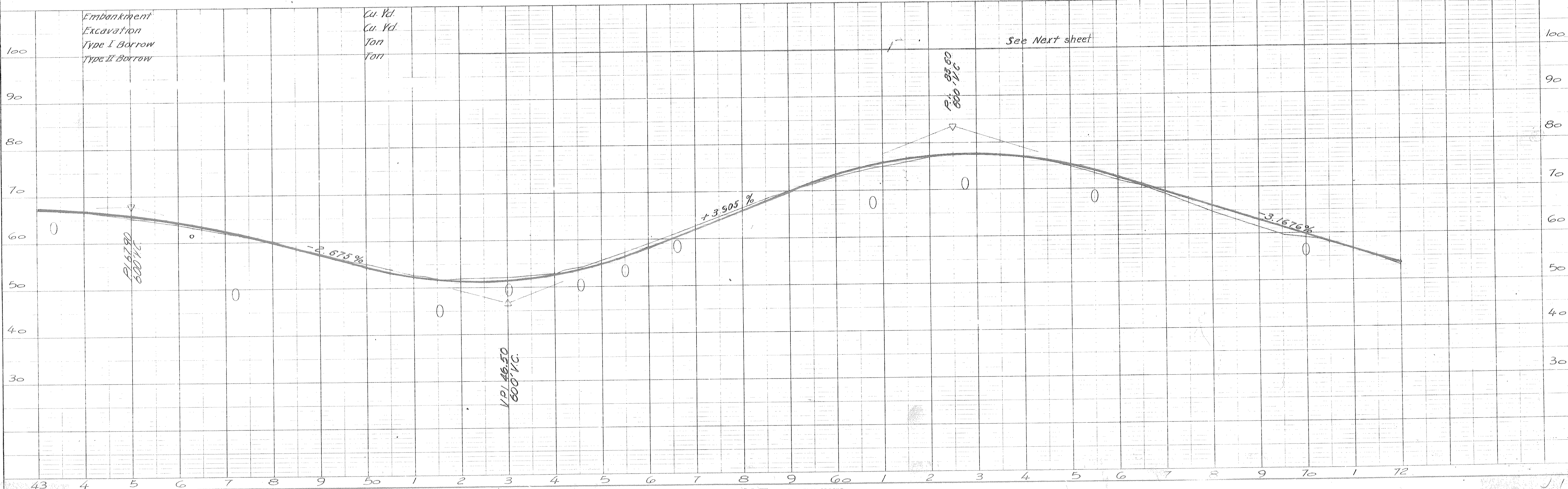
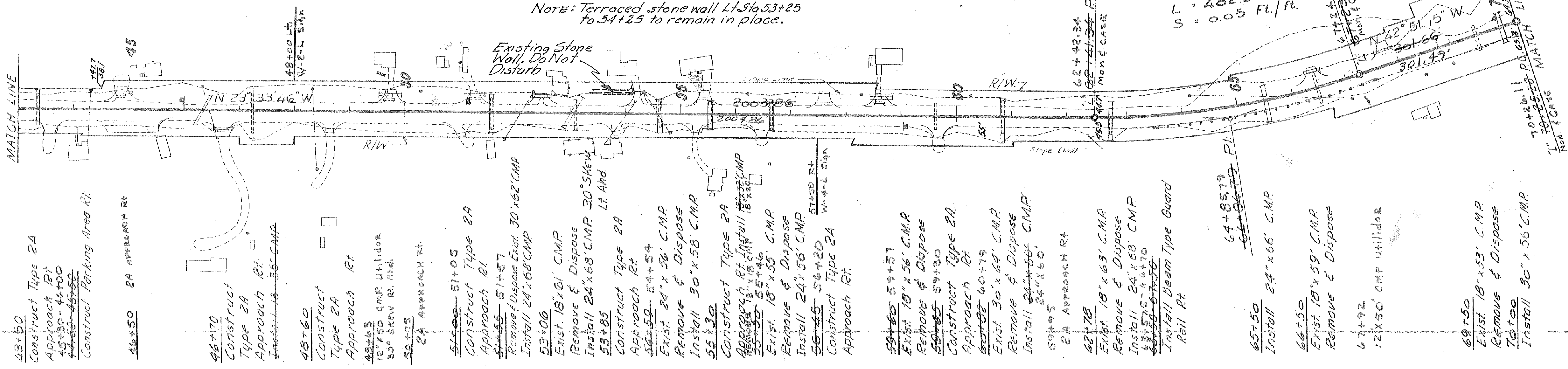
43+25 43+28
Exist. 18"x59' C.M.P.
Remove & Dispose
Install 24"x64' C.M.P.
44+90
Construct Type 2A
Approach Lt.
Exist. 12"x20' C.M.P.
Remove & Dispose
Install 18"x34' C.M.P.
46+25 47+22
Install 18"x64' C.M.P. Utilidor.
Skew 12"x44'
47+24 47+25
Exist. 30"x80' C.M.P.
Remove & Dispose
Install 24"x92' C.M.P.
47+50
2A APPROACH LT

49+75 49+62
Construct Type 2A
Approach Lt.
Exist. 18"x20' C.M.P.
Remove & Dispose
Install 18"x44' C.M.P.
51+24
Construct Type 2A
Approach Lt.
Exist. 12"x28' C.M.P.
Remove & Dispose
Install 18"x40' C.M.P.
52+50
Construct Type 2A
Approach Lt.
Exist. 18"x14' C.M.P.
Remove & Dispose
Install 18"x34' C.M.P.
54+25
Construct Type 2A
Approach Lt.

55+42 55+35
Construct Type 2A
Approach Lt.
Exist. 18"x18' C.M.P.
Remove & Dispose
Install 18"x36' C.M.P.
56+62 56+62
Exist. 18"x57' C.M.P.
Remove & Dispose
Install 24"x58' C.M.P.
57+60 57+82
Exist. 12"x20' C.M.P.
Remove & Dispose
Construct Type 2A
Approach Lt.
INSTALL 18"x36' C.M.P.
58+62
Exist. 12"x20' C.M.P.
Remove & Dispose
Construct Type 2A
Approach Lt.
Install 18"x40' C.M.P.
58+81
12"x46' C.M.P. Utilidor

$\Delta = 19^{\circ}17'29"$
 $D = 4^{\circ}Lt$
 $T = 243.45'$
 $L = 482.28'$
 $S = 0.05 Ft./ft.$

NOTE: Terraced stone wall Lt Sta 53+25 to 54+25 to remain in place.



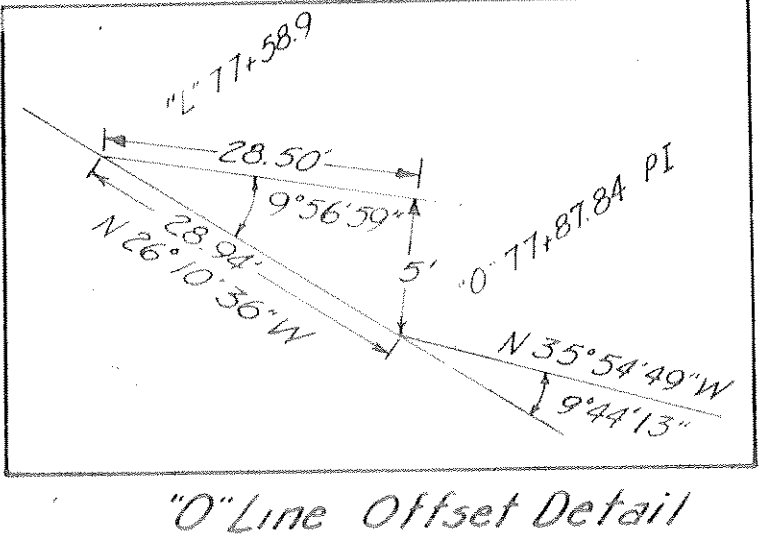
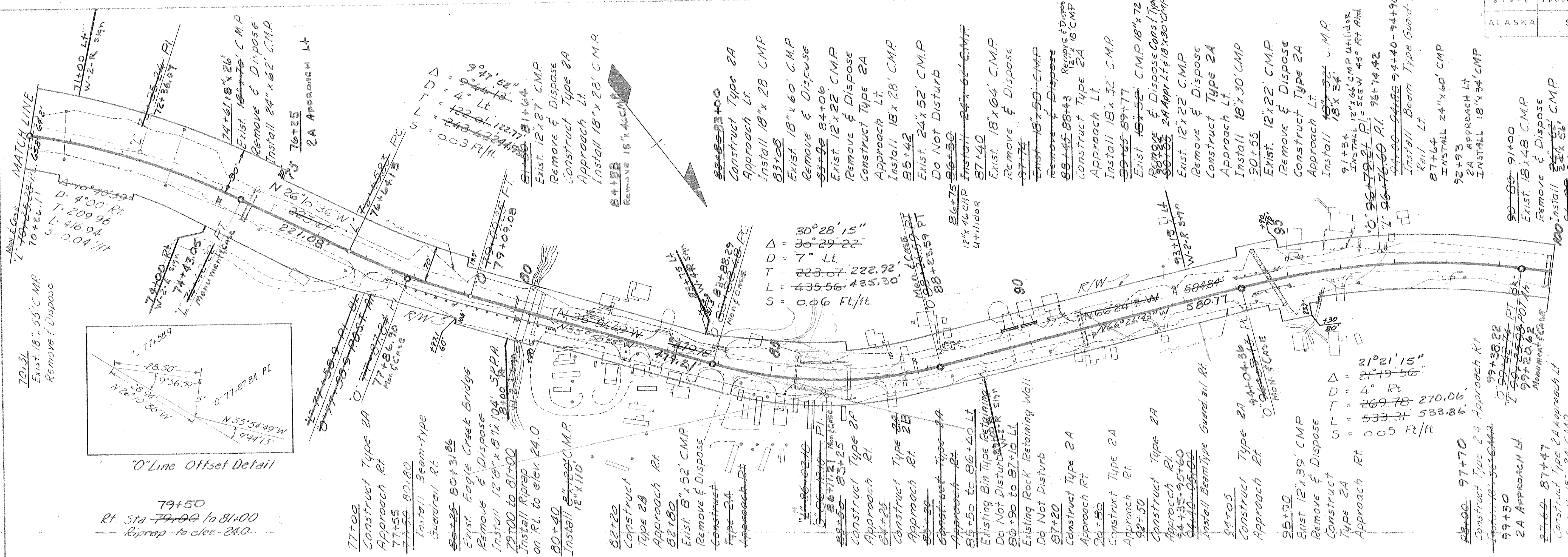
PLAN

PROFILE

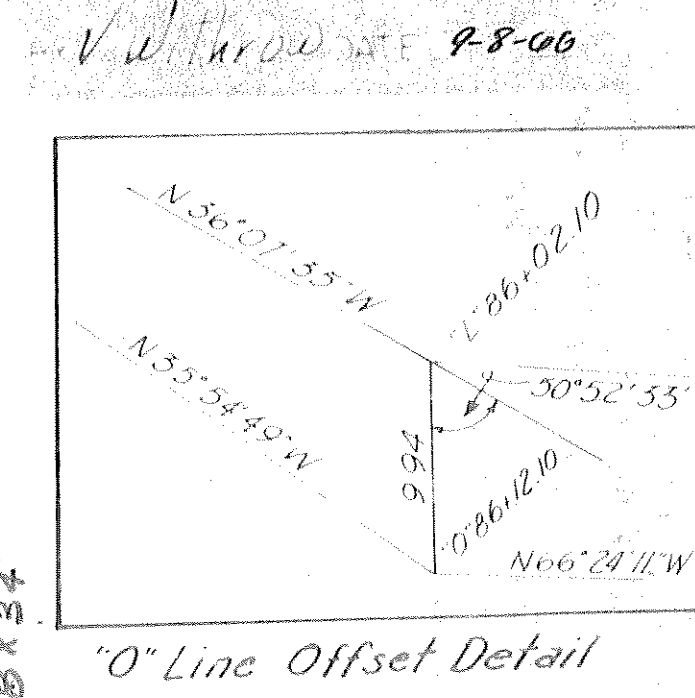
STATE	PROJECT DESIGNATION	YEAR	SHEET NO.	TOTAL SHEETS
ALASKA	S-095 9 (1)	1965	6	29

PLAN
 SURVEYED BY: _____
 PLOTTED BY: _____
 CHECKED BY: _____
 DATE: _____

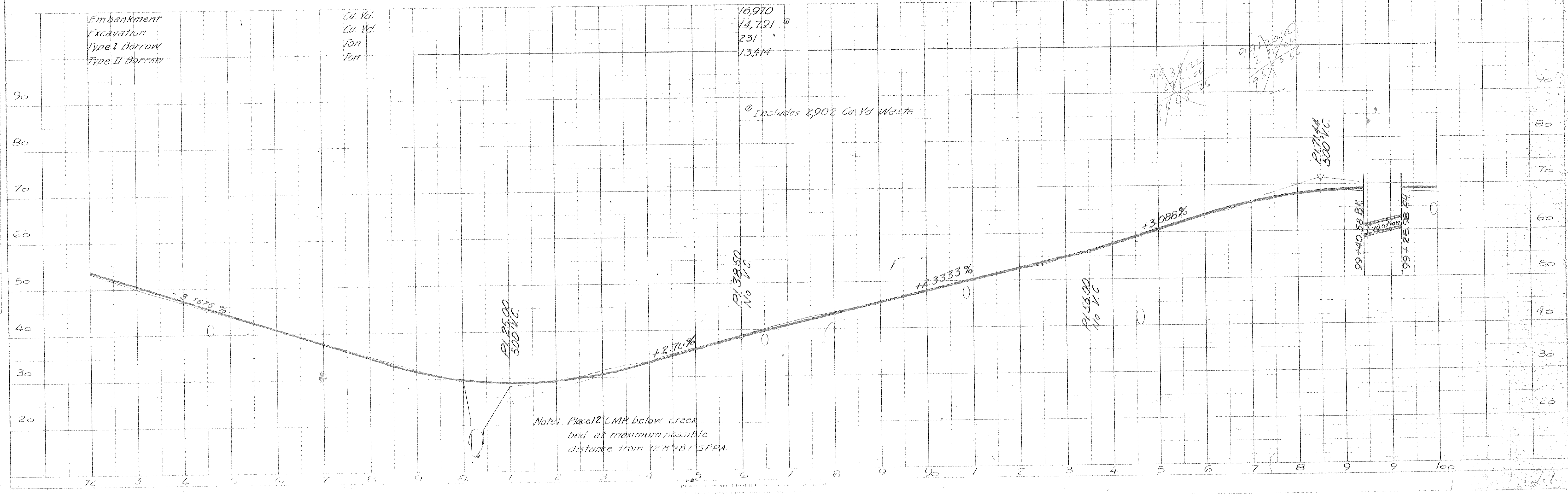
PROFILE
 SURVEYED BY: _____
 PLOTTED BY: _____
 CHECKED BY: _____
 DATE: _____



MICROFILMED



79+50
 Rt. Sta. 79+00 to 81+00
 Riprap to elev. 24.0



Note: Place 12' CMP below creek bed at maximum possible distance from 12'8" x 8' S.P.P.A.

16,910
 14,791
 231
 13,414
 Includes 2,902 Cu. Yd. Waste

Embankment
 Excavation
 Type I Borrow
 Type II Borrow

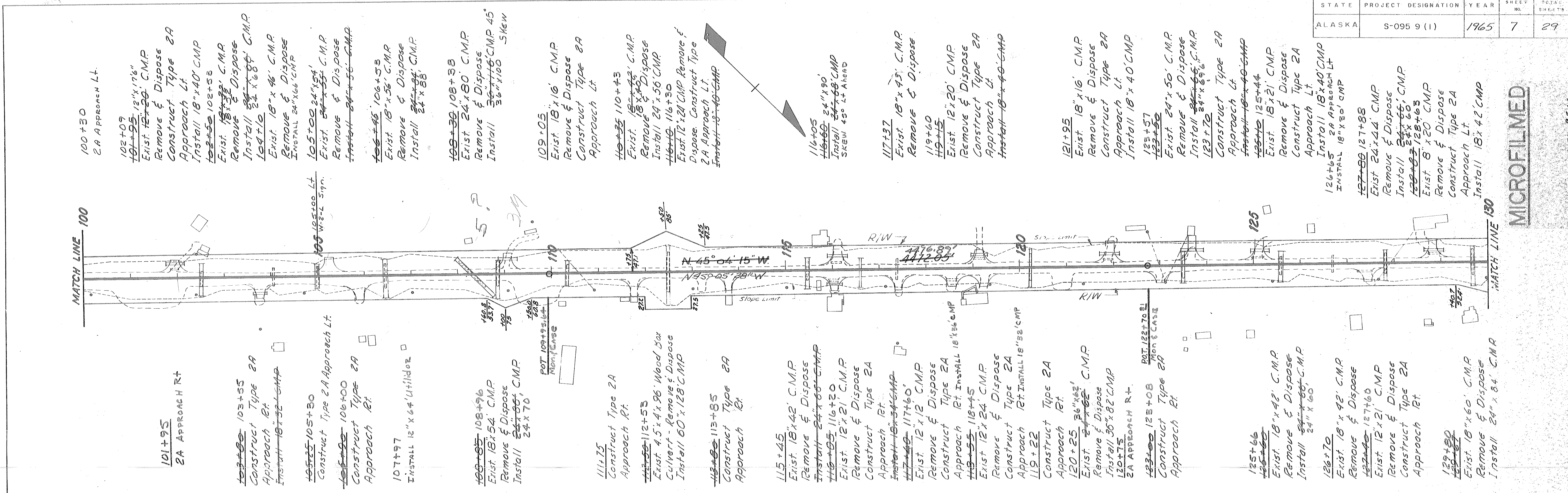
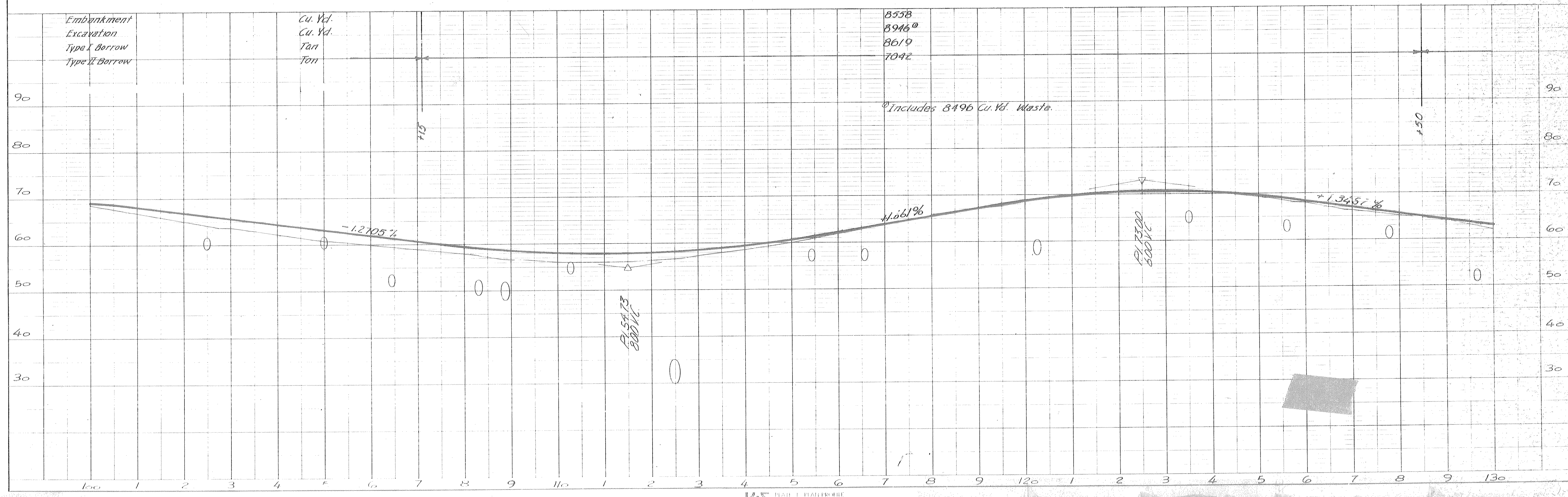
Cu. Yd.
 Cu. Yd.
 Ton
 Ton

97+38.22
 270.06
 96+50.00
 97+00.00

PI 714.4
 300 V.C.
 99+40.58 B.K.
 99+25.58 A.H.

PLAN
NOTE BOOK
NO.

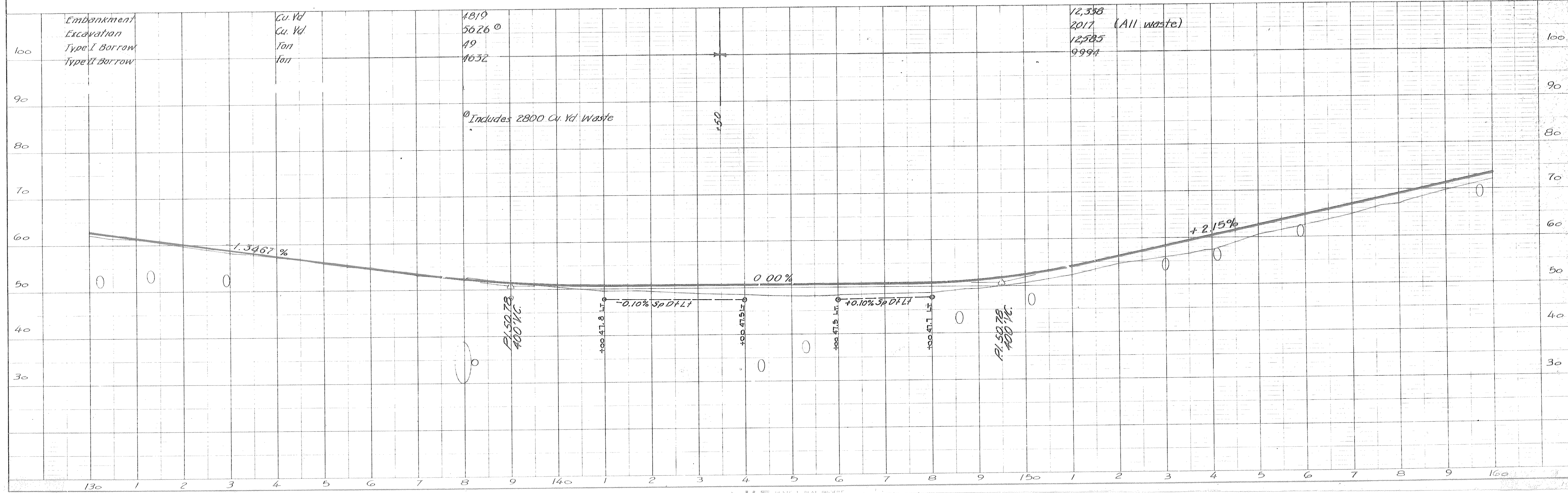
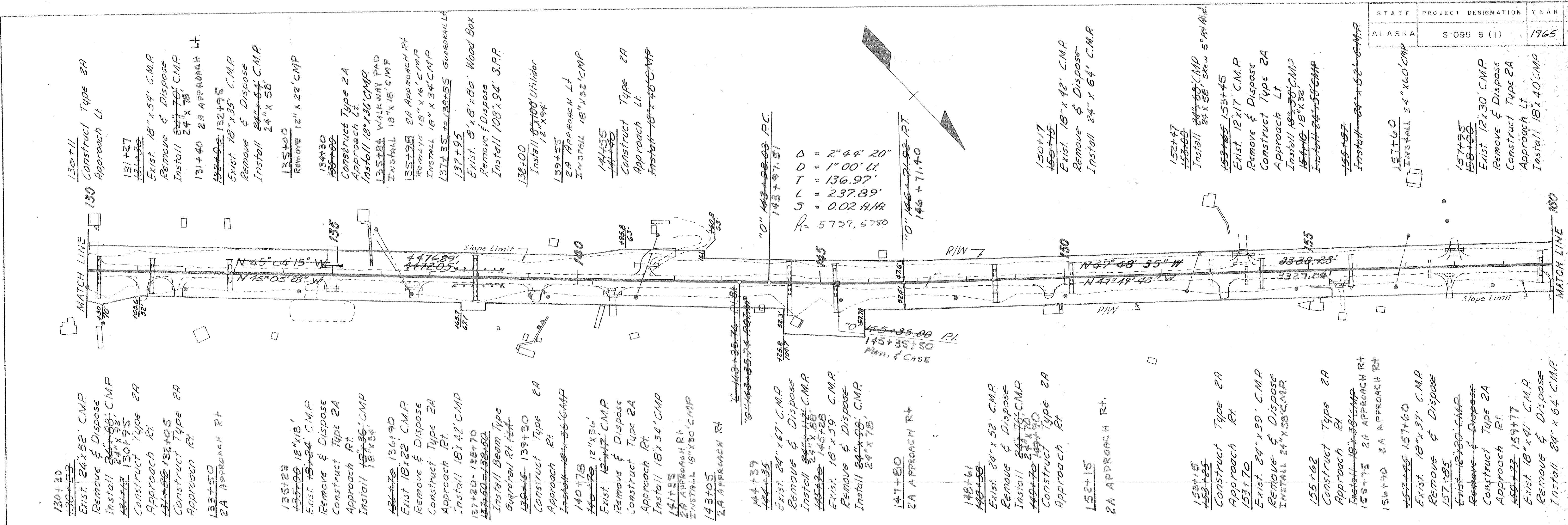
PROFILE
NOTE BOOK
NO.



MICROFILMED

2-6-66

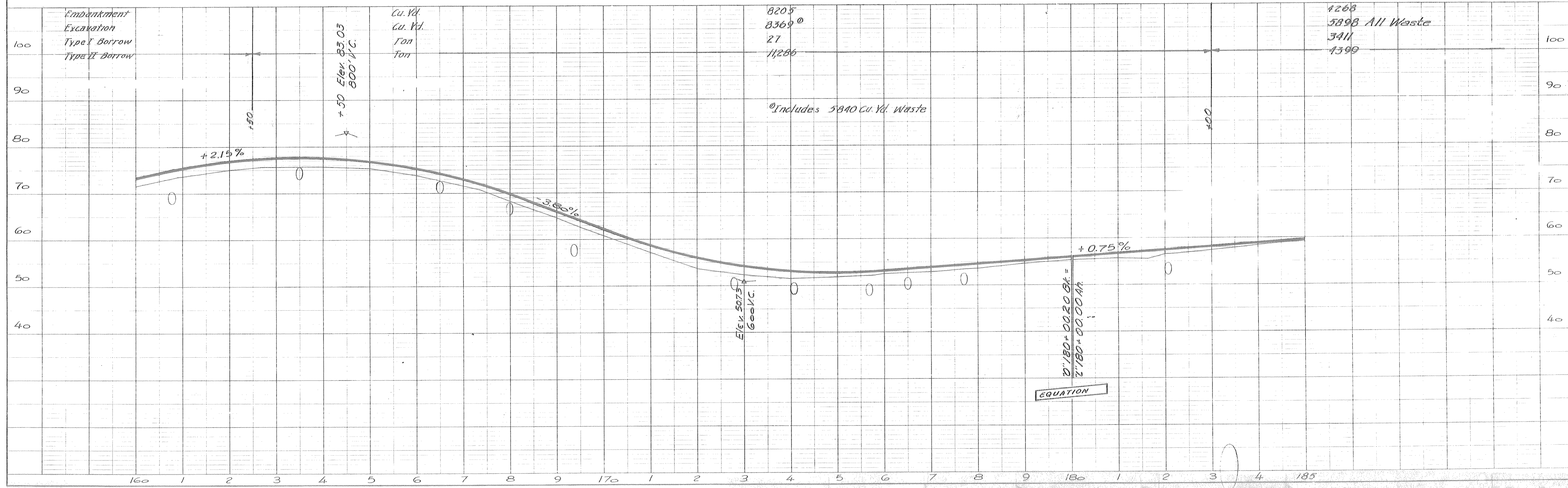
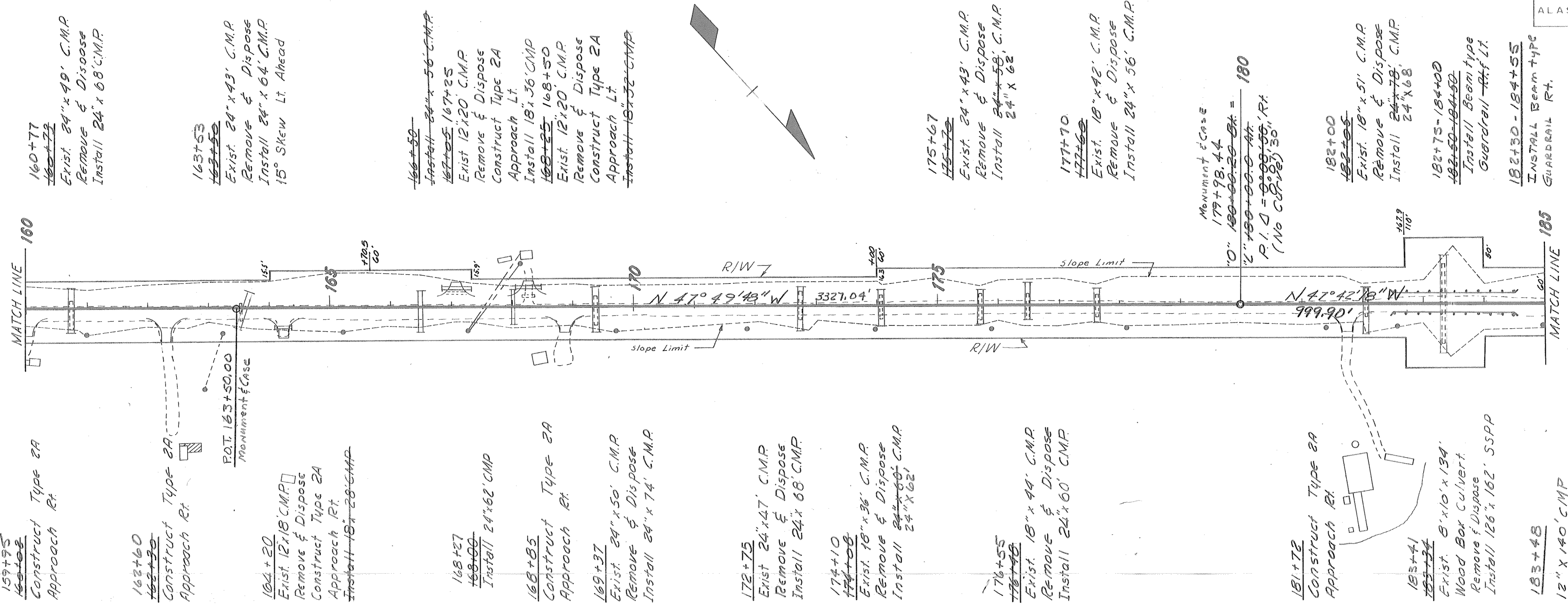
STATE	PROJECT DESIGNATION	YEAR	SHEET NO	TOTAL SHEETS
ALASKA	S-095 9 (1)	1965	8	29



MICROFILMED

MICROFILMED

BY & Throw DATE 9-8-66



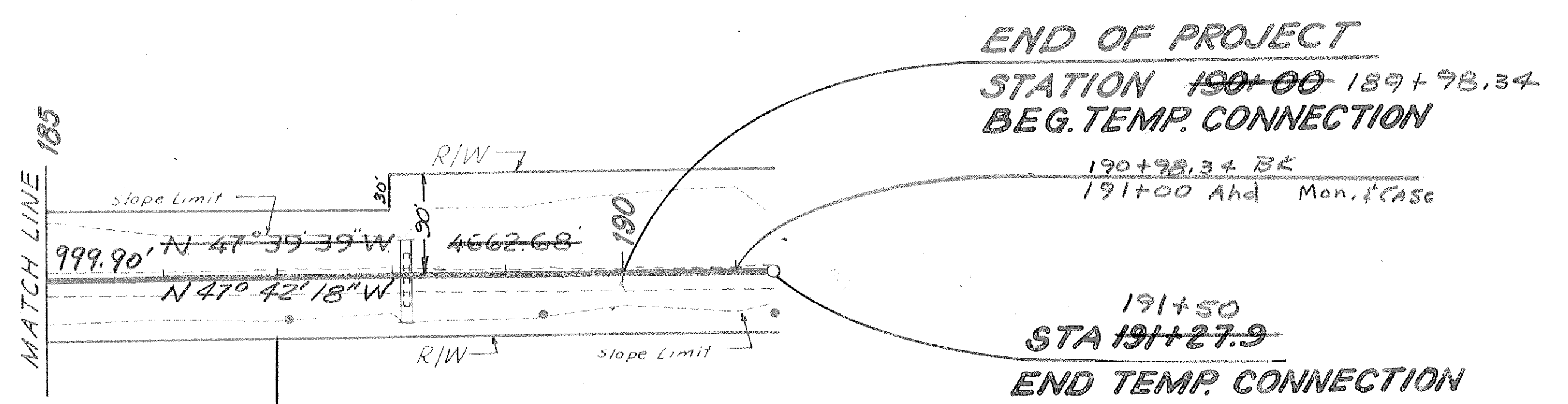
PLAN
NOTE BOOK NO.

PROFILE
NOTE BOOK NO.

STATE	PROJECT DESIGNATION	YEAR	SHEET NO.	TOTAL SHEETS
ALASKA	S-095 9 (1)	1965	10	29

MICROFILMED

DATE OF REVISION 9-8-00



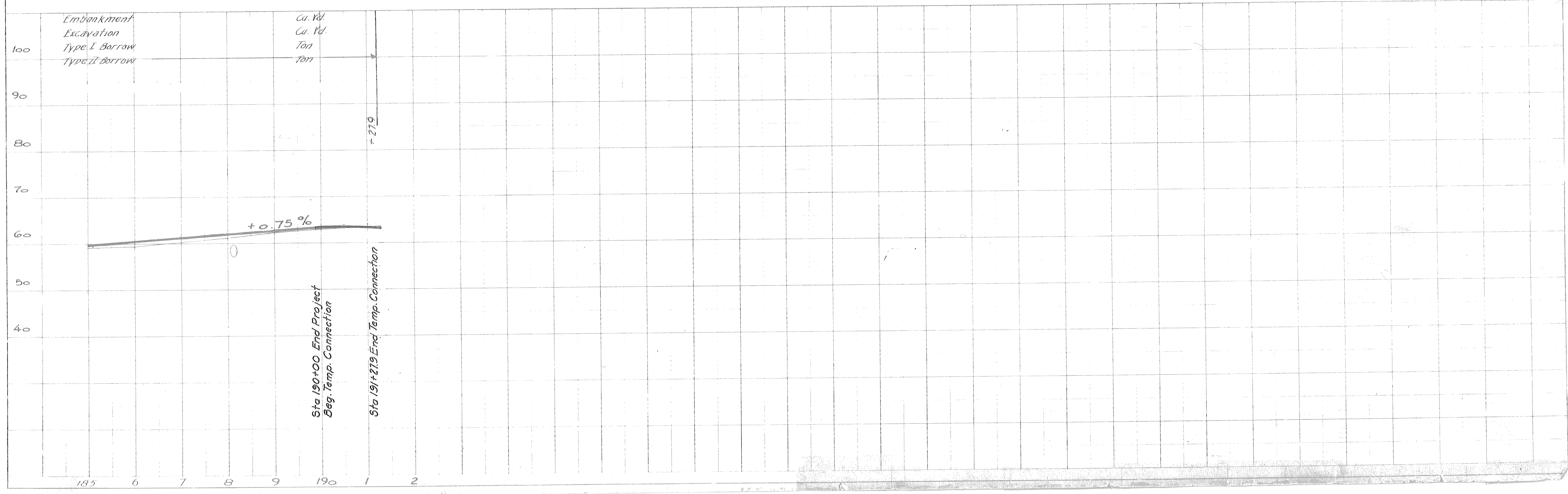
END OF PROJECT
STATION 190+00 189+98.34
BEG. TEMP. CONNECTION

191+50
STA 191+27.9
END TEMP. CONNECTION

189+98.34 to 191+50
 Sta. 190+00 to 191+27.9 Warp
 line & grade to meet existing roadway

188+06
 188+11
 Exist 24' x 48' C.M.P.
 Remove & Dispose
 Install 24' x 70' C.M.P.

PLAN



PROFILE

LIST OF CULVERTS AND MISCELLANEOUS WORK

STATION	DESCRIPTION	Backfill for Culverts C.Y.	Excavation for Structures Cu. Yd.	Class A Concrete Cu. Yd.	103(1)	406(1)	453(50)	453(5E)	453(5G)	453(5H)	453(5I)	453(5K)	453(5M)	453(1Z)	453(1L)	453(2V)	457(1)	510(2)	Height of Cover Ft.	REMARKS	
																					12" Corrugated Metal Pipe Lin. Ft.
5+55	Construct type 2A Approach Lt.																				
5+83	Construct typ 2A approach Rt. - Install 18" x 40" C.M.P.							40													
5+85	Construct Type 2A Approach Lt. Remove & Dispose Existing 18" x 44" C.M.P. Install 18" x 38" C.M.P.																44				
6+10	Construct Type 2A Approach Rt.																				
6+75	Construct Type 2A Approach Rt.																				
8+00	Construct Type 2A Approach Rt.																				
10+00	Install 24" x 68" C.M.P.	14	53						68										4		
10+60	Construct Type 2A Approach Rt.																				
11+72	Construct Type 2A Approach Rt.																				
13+75	Remove & Dispose Existing 18" x 56" C.M.P. Install 24" x 54" C.M.P.	9	29						54								56		2		
14+62	Remove & Dispose Existing 18" x 60" C.M.P.																60				
15+67	Remove & Dispose Existing 18" x 58" C.M.P. Install 24" x 62" C.M.P.	10	46						62										6		
16+00	Install 24" x 60" C.M.P.	10	50						60										6		
17+00	Construct Type 2A Approach Rt.																				
19+00	Install 24" x 56" C.M.P.	9	39						56										2		
19+35	Remove & Dispose Existing 18" x 52" C.M.P. Install 24" x 60" C.M.P.	10	20	0.8					60								52		1		Install Headwall Left
19+50	Construct Type 2A Approach Rt.																				
20+05	Construct Type 2A Approach Rt.																				
20+20	Construct Type 2A Approach Rt.																				
20+60	Construct Type 2A Approach Rt.																				
20+70	Construct Type 2A Approach Lt. Install 18" x 40" C.M.P.							40													
21+09	Remove & Dispose Existing 18" x 54" C.M.P. Install 24" x 58" C.M.P.	9	29						58								54		2		

MICROFILMED

9-8-00

MISCELLANEOUS WORK

STATE

PROJECT DESIGNATION

YEAR

SHEET NO

TOTAL SHEETS

5-0959(I)

1965

12

29

STATION	DESCRIPTION														REMARKS		
		Backfill for Culverts C.Y.	Excavation for Structures-Cu.Yd.	Class #1 Concrete Cu. Yd.	12" Corrugated Metal Pipe - Lin. Ft.	18" Corrugated Metal Pipe - Lin. Ft.	24" Corrugated Metal Pipe - Lin. Ft.	30" Corrugated Metal Pipe - Lin. Ft.	36" Corrugated Metal Pipe - Lin. Ft.	48" Corrugated Metal Pipe - Lin. Ft.	60" Corrugated Metal Pipe - Lin. Ft.	108" Structural Plate Pipe 10 Gauge - Lin. Ft.	126" Structural Plate Pipe 5 Gauge - Lin. Ft.	12' 8" x 8' 1" Structural Plate Pipe Arch 8 Gauge - Lin. Ft.		Removal of Culverts - Lin. Ft.	Loose Riprap - Ton
21+20	Construct Type 2A Approach Rt.																
21+90	Construct Type 2A Approach Lt.																
	Install 18" x 36' C.M.P.					36											
22+20	Construct Type Approach Rt.																
23+00	Construct Type 2A Approach Rt.																
23+32	Remove & Dispose Existing 18" x 52' C.M.P.													52			
	Install 24" x 54' C.M.P.	9	20					54								3	
24+65	Remove & Dispose Existing 18" x 58' C.M.P.													58			
	Install 24" x 58' C.M.P.	9	27					58								7	
25+20	Construct Type 2A Approach Rt.																
25+87	Remove & Dispose Existing 24" x 62' C.M.P.													62			
	Install 24" x 68' C.M.P.	12	52					68								9	
28+15	Construct Type 2A Approach Rt.																
29+00	Construct Type 2A Approach Rt.																
29+30	Remove & Dispose Existing 18" x 66' C.M.P.													66			
	Install 24" x 66' C.M.P.	11	31					66								10	
30+00	Construct Type 2A Approach Rt.																
32+02	Remove & Dispose Existing 18" x 50' C.M.P.													50			
	Install 24" x 60' C.M.P.	10	27					60								5	
33+25	Construct Type 2A Approach Rt.																
33+75	Remove & Dispose Existing 18" x 60' C.M.P.													60			
	Install 24" x 70' C.M.P.	12	27					70								6	
34+98	Remove & Dispose Existing 18" x 58' C.M.P.													58			
	Install 24" x 70' C.M.P.	12	43					70								5	
36+22	Remove & Dispose Existing 18" x 48' C.M.P.													48			
36+45	Remove & Dispose Existing 18" x 54' C.M.P.													54			
	Install 24" x 68' C.M.P.	12	43					68								6	
37+76	Remove & Dispose Existing 18" x 54' C.M.P.													54			
	Install 24" x 64' C.M.P.	11	37					64								4	

MICROFILMED

9-8-66

MISCELLANEOUS WORK

STATE
INDIANA

PROJECT DESIGNATION
5-0959(1)

YEAR	SHEET NO.	TOTAL SHEETS
1965	13	29

STATION	DESCRIPTION	Backfill for Culverts C.Y.	Excavation for Structures Cu. Yd.	Class A Concrete Cu. Yd.	12" Corrugated Metal Pipe Lin. Ft.	18" Corrugated Metal Pipe Lin. Ft.	24" Corrugated Metal Pipe Lin. Ft.	30" Corrugated Metal Pipe Lin. Ft.	36" Corrugated Metal Pipe Lin. Ft.	48" Corrugated Metal Pipe Lin. Ft.	60" Corrugated Metal Pipe Lin. Ft.	108" Structural Plate Pipe 10 Gage Lin. Ft.	126" Structural Plate Pipe 5 Gage Lin. Ft.	128" x 18 1/2" Structural Plate Pipe Arch 8 Gage Lin. Ft.	Removal of Culverts Lin. Ft.	510(2)	Loose Riprap Ton	Height of Cover Ft.	REMARKS
38+50	Construct Type 2A Approach Lt. Remove & Dispose Existing 18"x 24" C.M.P. Install 18"x 40' C.M.P.					40									24				
39+85	Remove & Dispose Existing 18"x 56' C.M.P. Install 24"x 62' C.M.P.	11	37				62								56			4	
41+15	Construct Type 2A Approach Rt. & Lt. Remove & Dispose Existing 12"x 20' C.M.P. Lt. Install 18"x 36' C.M.P. Lt.					36									20				
41+74	Remove & Dispose Existing 36"x 100' C.M.P. Install 36"x 124' C.M.P.	25	188						124						100			18	
42+85	Construct Type 2A Approach Lt. Remove & Dispose Existing 12"x 20' C.M.P.														20				
43+35	Remove & Dispose Existing 18"x 59' C.M.P. Install 24"x 64' C.M.P.	11	46				64								59			5	
43+50	Construct Type 2A Approach Rt.																		
44+50-	Construct Parking Area Right.																		
45+50																			
44+90	Construct Type 2A Approach Lt. Remove & Dispose Existing 12"x 20' C.M.P. Install 18"x 34' C.M.P.					34									20				
46+35	Install 12"x 64' C.M.P. Utilidor	5	15		64													3	skew 30° Lt. And.
46+70	Construct Type 2A Approach Rt. Install 18"x 36' C.M.P.					36													
47+21	Remove & Dispose Existing 30"x 80' C.M.P. Install 24"x 92' C.M.P.	16	95				92								80			14	
48+60	Construct Type 2A Approach Rt.																		
49+75	Construct Type 2A Approach Lt. Remove & Dispose Existing 12"x 20' C.M.P. Install 18"x 44' C.M.P.					44									20				
51+00	Construct Type 2A Approach Rt.																		

MICROFILMED

9-8-66

LIST OF CULVERTS AND MISCELLANEOUS WORK

STATE
ALASKA

PROJECT DESIGNATION
5-0959(1)

YEAR SHEET TOTAL
1965 14 29

STATION	DESCRIPTION	Backfill for Culverts C.Y.	Excavation for Structures Cu. Yd.	Class A Concrete Cu. Yd.	12" Corrugated Metal Pipe Lin. Ft.	18" Corrugated Metal Pipe Lin. Ft.	24" Corrugated Metal Pipe Lin. Ft.	30" Corrugated Metal Pipe Lin. Ft.	36" Corrugated Metal Pipe Lin. Ft.	48" Corrugated Metal Pipe Lin. Ft.	60" Corrugated Metal Pipe Lin. Ft.	108" Structural Plate Pipe 10 Gauge Lin. Ft.	126" Structural Plate Pipe 5 Gauge Lin. Ft.	12'8"x8'1" Structural Plate Pipe Arch-8 Gauge Lin. Ft.	457(1) Removal of Culverts Lin. Ft.	510(2) Loose Riprap Ton	Height of Cover Ft.	REMARKS	
																			103(1)
51+20	Construct Type 2A Approach Lt. Remove & Dispose Existing 12"x28' CMP Install 18"x40' CMP					40									28				
51+55	Remove & Dispose Existing 30"x62' CMP Install 24"x68' CMP	11	41				68								62			6	
52+40	Construct Type 2A Approach Lt. Remove & Dispose Existing 18"x14' CMP Install 18"x34' CMP					34									14				
53+06	Remove & Dispose Existing 18"x61' CMP Install 24"x68' CMP	10	29				68								61			2	
53+85	Construct Type 2A Approach Rt.																		
54+25	Construct Type 2A Approach Lt.																		
54+59	Remove & Dispose Existing 24"x56' CMP Install 30"x58' CMP	10	36					58							56			3	
55+30	Construct Type 2A Approach Rt. Install 18"x32' CMP					32													
55+42	Construct Type 2A Approach Lt. Remove & Dispose Existing 18"x18' CMP														18				
55+50	Remove & Dispose Existing 18"x55' CMP Install 24"x56' CMP	9	29				56								55			3	
56+45	Construct Type 2A Approach Rt.																		
56+63	Remove & Dispose Existing 18"x57' CMP Install 24"x58' CMP	10	29				58								57			2	
57+60	Construct Type 2A Approach Lt. Remove & Dispose Existing 12"x20' CMP														20				
58+62	Construct Type 2A Approach Lt. Remove & Dispose Existing 12"x20' CMP Install 18"x40' CMP					40									20				

MICROFILMED
9-8-66

LIST OF CULVERTS AND MISCELLANEOUS WORK

STATE
ALASKA

PROJECT DESIGNATION
S-0959(1)

YEAR SHEET NO. TOTAL SHEETS
1965 15 29

STATION	DESCRIPTION	Backfill for Culverts C.Y.	Excavation for Structures Cu. Yd.	Class A Concrete Cu. Yd.	12" Corrugated Metal Pipe Lin. Ft.	18" Corrugated Metal Pipe Lin. Ft.	24" Corrugated Metal Pipe Lin. Ft.	30" Corrugated Metal Pipe Lin. Ft.	36" Corrugated Metal Pipe Lin. Ft.	48" Corrugated Metal Pipe Lin. Ft.	60" Corrugated Metal Pipe Lin. Ft.	108" Structural Plate Pipe 10 Gage Lin. Ft.	126" Structural Plate Pipe 5 Gage Lin. Ft.	128" x 81" Structural Plate Pipe Arch - 8 Gage Lin. Ft.	Removal of Culverts Lin. Ft.	510(2)	Loose Riprap Ton	Height of Cover Ft.	REMARKS
59+60	Remove & Dispose Existing 18"x56' CMP														56				
59+65	Construct Type 2A Approach Rt.																		
60+82	Remove & Dispose Existing 30" x 64' CMP														64				
	Install 24" x 80' CMP	13	58				80											10	
62+78	Remove & Dispose 18" x 63' CMP														63				
	Install 24" x 68' CMP	12	66				68											9	
65+50	Install 24" x 66' CMP	11	83				66											9	
66+40	Construct Type 2A Approach Lt.																		
	Install 18" x 34' CMP						34												
66+50	Remove & Dispose Existing 18" x 59' CMP														59				
67+80	Construct Type 2A Approach Lt.																		
	Install 18" x 34' CMP						34												
69+50	Remove & Dispose Existing 18" x 53' CMP														53				
70+00	Install 30" x 56' CMP	11	49					56										4	
80+25	Remove & Dispose Existing Bridge																		
	Install 12'8" x 8'1" x 104' SPPA	52	30											104					
80+40	Install 12" x 70' CMP Utilidor		0		120													16	
81+50	Construct Type 2A Approach Lt.																		
	Remove & Dispose Existing 12" x 27' CMP														27				
	Install 18" x 28' CMP						28												
82+20	Construct Type 2A Approach Rt.																		
82+80	Construct Type 2A Approach Rt.																		
	Remove & Dispose Existing 8" x 52' CMP														52				
82+80	Construct Type 2A Approach Lt.																		
	Install 18" x 28' CMP						28												
83+08	Remove & Dispose Existing 18" x 60' CMP														60				
83+50	Construct Type 2A Approach Rt.																		
83+90	Construct Type 2A Approach Lt.																		
	Remove & Dispose Existing 12" x 22' CMP														22				
	Install 18" x 28' CMP						28												
79+00-81+00	Riprap Rt. Embankment to Elev. 24.0															1,045			

MICROFILMED
 BY: W. Harpold
 9-5-66

LIST OF CULVERTS AND MISCELLANEOUS WORK

STATE
ALASKA

PROJECT DESIGNATION
5-0959(1)

YEAR SHEET NO. TOTAL SHEETS
1965 17 29

STATION	DESCRIPTION	Backfill for Culverts C.Y.	103(1)	406(1)	453(5C)	453(5B)	453(5E)	453(5H)	453(5J)	453(5K)	453(5M)	455(1Z)	455(1L)	455(2V)	457(1)	510(2)	REMARKS
			Excavation for Structures Cu. Yd.	Class A Concrete Cu. Yd.	12" Corrugated Metal Pipe Lin. Ft.	18" Corrugated Metal Pipe Lin. Ft.	24" Corrugated Metal Pipe Lin. Ft.	30" Corrugated Metal Pipe Lin. Ft.	36" Corrugated Metal Pipe Lin. Ft.	48" Corrugated Metal Pipe Lin. Ft.	60" Corrugated Metal Pipe Lin. Ft.	108" Structural Plate Pipe 10 Gauge Lin. Ft.	126" Structural Plate Pipe 5 Gauge Lin. Ft.	128" x 81" Structural Plate Pipe Arch-8 Gauge Lin. Ft.	Removal of Culverts Lin. Ft.	Loose Riprap Ton	
101+95	Construct Type 2A Approach Lt. Remove & Dispose Existing 12"x20' CMP Install 18"x40' CMP					40									20		
102+50	Remove & Dispose Existing 18"x32' CMP Install 24"x66' CMP	11	35		66										32		
103+80	Construct Type 2A Approach Rt. Install 18"x32' CMP				32												6
105+00	Remove & Dispose Existing 24"x55' CMP Install 24"x56' CMP	9	16		56										55		2
105+90	Construct Type 2A Approach Rt.																
106+45	Remove & Dispose Existing 18"x56' CMP Install 24"x84' CMP	13	62		84										56		10
108+30	Remove & Dispose Existing 24"x80' CMP Install 36"x116' CMP	22	73					116							80		9
108+85	Remove & Dispose Existing 18"x54' CMP Install 24"x86' CMP	15	66		86										54		10
109+05	Construct Type 2A Approach Lt. Remove & Dispose Existing 18"x16' CMP														16		
110+35	Remove & Dispose Existing 18"x42' CMP Install 24"x56' CMP	9	20		56										42		2
111+75	Construct Type 2A Approach Rt.																
112+50	Remove & Dispose Existing 4.5' x 4' x 96' Wood box Culvert. Install 60"x128' CMP	15	253							128					96		
113+80	Construct Type 2A Approach Rt.																
115+45	Remove & Dispose Existing 18"x42' CMP Install 24"x66' CMP	11	31		66										42		4
116+05	Construct Type 2A Approach Rt. Remove & Dispose Existing 12"x21' CMP Install 18"x34' CMP				34										21		
116+10	Construct Type 2A Approach Lt. Remove & Dispose Existing 12"x24' CMP														24		

MICROFILMED

2-8-00

2-8-00

LIST OF CULVERTS AND MISCELLANEOUS WORK

STATE
ALASKA

PROJECT DESIGNATION
5-0959(1)

YEAR SHEET TOTAL
1965 18 29

STATION	DESCRIPTION	Backfill for Culverts C.Y.	103(1)	406(1)	453(5C)	453(5E)	453(5G)	453(5H)	453(5I)	453(5K)	453(5M)	455(1I)	455(1L)	455(2V)	457(1)	510(2)	Height of Cover Ft.	REMARKS
			Excavation for Structures-Cu.Yd.	Class "A" Concrete Cu. Yd.	12" Corrugated Metal Pipe - Lin. Ft.	18" Corrugated Metal Pipe - Lin. Ft.	24" Corrugated Metal Pipe - Lin. Ft.	30" Corrugated Metal Pipe - Lin. Ft.	36" Corrugated Metal Pipe - Lin. Ft.	48" Corrugated Metal Pipe - Lin. Ft.	60" Corrugated Metal Pipe - Lin. Ft.	108" Structural Plate Pipe 10 Gauge Lin. Ft.	126" Structural Plate Pipe 5 Gauge Lin. Ft.	128"x81" Structural Plate Pipe Arch 8 Gauge Lin. Ft.	Removal of Culverts Lin. Ft.			
116+60	Install 24"x 68' CMP	12	37				68										5	
117+37	Remove & Dispose Existing 18"x43' CMP														43			
117+40	Construct Type 2A Approach Rt. Remove & Dispose Existing 12"x12' CMP														12			
118+55	Construct Type 2A Approach Rt. Remove & Dispose Existing 12"x 24' CMP														24			
119+15	Construct Type 2A Approach Lt. Remove & Dispose Existing 12"x20' CMP														20			
119+22	Construct Type 2A Approach Rt. Install 18"x 40' CMP				40													
120+25	Remove & Dispose Existing 24'x62' CMP Install 36"x82' CMP	16	96					82							62		12	
121+95	Construct Type 2A Approach Lt. Remove & Dispose Existing 18"x 16' CMP														16			
123+00	Construct Type 2A Approach Rt. Install 18"x 40' CMP				40													
123+50	Remove & Dispose Existing 24"x50' CMP Install 24"x 66' CMP	11	35				66								50		6	
123+70	Construct Type 2A Approach Lt. Install 18"x 40' CMP				40													
125+10	Construct Type 2A Approach Lt. Remove & Dispose Existing 18"x 21' CMP														21			
125+60	Remove & Dispose Existing 18"x42' CMP Install 24"x 66' CMP	11	42				66								42		7	
126+70	Remove & Dispose Existing 18"x42' CMP														42			
127+40	Construct Type 2A Approach Rt. Remove & Dispose Existing 12"x 21' CMP														21			
127+80	Remove & Dispose Existing 24"x 44' CMP Install 24"x 66' CMP	11	27				66								44		4	

MICROFILMED

9-8-66

LETTING CONTRACTS AND MISCELLANEOUS WORK

STATE
ALASKA

PROJECT DESIGNATION
5-0959(1)

YEAR SHEET TOTAL
1965 19 29

STATION	DESCRIPTION	Backfill for Culverts C.Y.	Excavation for Structures Cu.Yd.	Class 4" Concrete Cu.Yd.	12" Corrugated Metal Pipe - Lin. Ft.	18" Corrugated Metal Pipe - Lin. Ft.	24" Corrugated Metal Pipe - Lin. Ft.	30" Corrugated Metal Pipe - Lin. Ft.	36" Corrugated Metal Pipe - Lin. Ft.	48" Corrugated Metal Pipe - Lin. Ft.	60" Corrugated Metal Pipe - Lin. Ft.	108" Structural Plate Pipe 10 Gage Lin. Ft.	126" Structural Plate Pipe 5 Gage Lin. Ft.	12' 8" x 8' 1" Structural Plate Pipe Arch - 8 Gage Lin. Ft.	457(1) Removal of Culverts Lin. Ft.	510(2) Loose Riprap Ton	Height of Cover Ft.	REMARKS
128+83	Construct Type 2A Approach Lt. Remove & Dispose Existing 8"x 20' CMP Install 18"x 42' CMP														20			
129+67	Remove & Dispose Existing 18"x 60' CMP Install 24"x 84' CMP	15	82				84								60		13	
130+11	Construct Type 2A Approach Lt. Remove & Dispose Existing 24"x 52' CMP Install 24"x 88' CMP	15	81				88								52		14	
131+12	Construct Type 2A Approach Rt. Remove & Dispose Existing 18"x 54' CMP Install 24"x 70' CMP	13	56				70								54		10	
131+86	Construct Type 2A Approach Rt. Remove & Dispose Existing 18"x 35' CMP Install 24"x 64' CMP	11	52				64								35		8	
135+00	Construct Type 2A Approach Rt. Remove & Dispose Existing 18"x 24' CMP Install 18"x 36' CMP						36								24			
135+00	Construct Type 2A Approach Lt. Construct Type 2A Approach Rt. Remove & Dispose Existing 18"x 22' CMP Install 18"x 42' CMP														22			
137+95	Remove & Dispose Existing 8'x 8'x 80' Wood Box Culvert. Install 108"x 94' S.P.P.		310									94			80			
139+15	Construct Type 2A Approach Rt. Install 18"x 36' CMP						36											
140+70	Construct Type 2A Approach Rt. Remove & Dispose Existing 12"x 17' CMP Install 18"x 34' CMP						34								17			
138+00	Install 12"x 100' Utilidor		100		100													

MICROFILMED

9-8-66

LIST OF CULVERTS AND MISCELLANEOUS WORK

STATE
ALASKA

PROJECT DESIGNATION
5-0959(1)

YEAR SHEET TOTAL
1965 20 29

STATION	DESCRIPTION	Backfill for Culverts C.Y.	103(1)	406(1)	453(5C)	453(5E)	453(5B)	453(5H)	453(5I)	453(5K)	453(5M)	455(1I)	455(1J)	455(2I)	457(1)	510(2) Loose Riprap Ton	Height of Cover Ft.	REMARKS
			Excavation for Structures Cu. Yd.	Class A Concrete Cu. Yd.	12" Corrugated Metal Pipe Lin. Ft.	18" Corrugated Metal Pipe Lin. Ft.	24" Corrugated Metal Pipe Lin. Ft.	30" Corrugated Metal Pipe Lin. Ft.	36" Corrugated Metal Pipe Lin. Ft.	48" Corrugated Metal Pipe Lin. Ft.	60" Corrugated Metal Pipe Lin. Ft.	108" Structural Plate Pipe 10 Gage Lin. Ft.	126" Structural Plate Pipe 5 Gage Lin. Ft.	12'8"x8'1" Structural Plate Pipe A1ch 8Gage Lin. Ft.	Removal of Culverts Lin. Ft.			
141+40	Construct Type 2A Approach Lt. Install 18"x46' CMP						46											
144+35	Remove & Dispose Existing 24"x67' CMP Install 24"x112' CMP	20	115			112									67		20	
145+30	Remove & Dispose Existing 18"x59' CMP Install 24"x98' CMP	17	76			98									59		17	
148+58	Remove & Dispose Existing 24"x52' CMP Install 24"x76' CMP	9	45			76									52		9	
149+70	Construct Type 2A Approach Rt.																	
150+15	Remove & Dispose Existing 18"x42' CMP Install 24"x64' CMP	12	35			64									42		5	
153+00	Install 24"x68' CMP	9	33			68											4	
153+25	Construct Type 2A Approach Rt.																	
153+65	Construct Type 2A Approach Lt. Remove & Dispose Existing 12"x17' CMP Install 18"x38' CMP						38								17			
153+70	Remove & Dispose Existing 24"x39' CMP														39			
154+10	Install 24"x58' CMP	9	21			58											2	
155+62	Construct Type 2A Approach Rt. Install 18"x38' CMP						38											
155+87	Install 24"x62' CMP	10	41			62											3	
157+45	Remove & Dispose Existing 18"x37' CMP														37			
157+85	Construct Type 2A Approach Rt. Remove & Dispose Existing 12"x20' CMP														20			
158+00	Construct Type 2A Approach Lt. Remove & Dispose Existing 12"x30' CMP Install 18"x40' CMP						40								30			
159+73	Remove & Dispose Existing 18"x41' CMP Install 24"x64' CMP	11	27			64									41		4	
160+02	Construct Type 2A Approach Rt.																	

MICROFILMED
9-8-69

LIST OF CULVERTS AND MISCELLANEOUS WORK

STATE
ALASKA

PROJECT DESIGNATION
5-0959(1)

YEAR SHEET TOTAL
1965 21 29

STATION	DESCRIPTION	Backfill for Culverts C.Y.	103(1) Excavation for Structures Cu. Yd.	406(1) Class A Concrete Cu. Yd.	453(5C) 12" Corrugated Metal Pipe Lin. Ft.	453(5E) 18" Corrugated Metal Pipe Lin. Ft.	453(5G) 24" Corrugated Metal Pipe Lin. Ft.	453(5H) 30" Corrugated Metal Pipe Lin. Ft.	453(5I) 36" Corrugated Metal Pipe Lin. Ft.	453(5K) 48" Corrugated Metal Pipe Lin. Ft.	453(5M) 60" Corrugated Metal Pipe Lin. Ft.	455(1J) 108" Structural Plate Pipe 10 Gage Lin. Ft.	455(1L) 126" Structural Plate Pipe 5 Gage Lin. Ft.	455(2V) 128"x81" Structural Plate Pipe Arch-8 Gage Lin. Ft.	457(1) Removal of Culverts Lin. Ft.	510(2) Loose Riprap Ton	Height of Cover Ft.	REMARKS	
																			160+73
162+30	Construct Type 2A Approach Rt.																		
163+50	Remove & Dispose Existing 24"x43' CMP Install 24"x64' CMP	10	23			64									43		3		
164+20	Construct Type 2A Approach Rt. Remove & Dispose Existing 12"x18' CMP Install 18"x28' CMP					28									18				
166+50	Install 24"x56' CMP	9	34			56											2		
167+05	Construct Type 2A Approach Lt. Remove & Dispose 12"x20' CMP Install 18"x36' CMP					36									20				
168+00	Install 24"x62' CMP	10	34			62											2		
168+25	Construct Type 2A Approach Lt. Remove & Dispose Existing 12"x20' CMP Install 18"x32' CMP					32									20				
168+85	Construct Type 2A Approach Rt.																		
169+37	Remove & Dispose Existing 24"x50' CMP Install 24"x74' CMP	13	43			74									50		8		
172+75	Remove & Dispose Existing 24"x47' CMP Install 24"x68' CMP	12	30			68									47		4		
174+08	Remove & Dispose Existing 18"x36' CMP Install 24"x60' CMP	10	27			60									36		3		
175+70	Remove & Dispose Existing 24"x43' CMP Install 24"x58' CMP	9	24			58									43		3		
176+48	Remove & Dispose Existing 18"x44' CMP Install 24"x60' CMP	10	28			60									44		3		
177+60	Remove & Dispose Existing 18"x42' CMP Install 24"x56' CMP	9	22			56									42		2		
181+72	Construct Type 2A Approach Rt.																		

MICROFILMED
9-8-66

LIST OF CULVERTS AND MISCELLANEOUS WORK

STATE
ALASKA

PROJECT DESIGNATION
5-0959(1)

YEAR
1965

SHEET NO.
22

TOTAL SHEETS
29

STATION	DESCRIPTION	Backfill for Culverts C.Y.	103(I)	406(I)	453(5C)	453(5E)	453(5G)	453(5H)	453(5L)	453(5K)	453(5M)	455(1Z)	455(1A)	455(2V)	457(1)	Loose Riprap Ton	Height of Cover Ft.	REMARKS
			Excavation for Structures Cu. Yd.	Class A Concrete Cu. Yd.	12" Corrugated Metal Pipe Lin. Ft.	18" Corrugated Metal Pipe Lin. Ft.	24" Corrugated Metal Pipe Lin. Ft.	30" Corrugated Metal Pipe Lin. Ft.	36" Corrugated Metal Pipe Lin. Ft.	48" Corrugated Metal Pipe Lin. Ft.	60" Corrugated Metal Pipe Lin. Ft.	108" Structural Plate Pipe 10 Gage Lin. Ft.	126" Structural Plate Pipe 5 Gage Lin. Ft.	128"x81" Structural Plate Pipe Arch-8 Gage Lin. Ft.	Removal of Culverts Lin. Ft.			
182+05	Remove & Dispose Existing 18"x51' CMP Install 24" x 78' CMP	13	40				78								51		5	MICROFILMED 9-8-66
183+34	Remove & Dispose Existing 8'x10'x134' Wood Box Culvert. Install 126"x162' SPP		939									162			134			
188+11	Remove & Dispose Existing 24"x48' CMP Install 24"x70' CMP	12	33				70								48		4	
7+50	Construct Walk Entrance Rt. Install 18"x6' C.M.P.					6												
70+31	Remove & Dispose Existing 18"x55' C.M.P.														55			
74+61	Remove & Dispose Existing 18"x70' C.M.P. Install 24"x62' C.M.P.	10	52				62								70		4	
77+00	Construct Type 2A Approach Rt.																	
104+10	Remove & Dispose Existing 18"x46' C.M.P.														46			
	Totals	898	4847	0.8	284	1556	4284	114	322	130	128	94	162	104	5147	1045		

