

# STATE OF ALASKA DEPARTMENT OF HIGHWAYS

## PLAN AND PROFILE PROPOSED HIGHWAY PROJECT

### RS-0959(9) NORTH DOUGLAS HIGHWAY PAVING HELIPORT TO FISH CREEK RD.

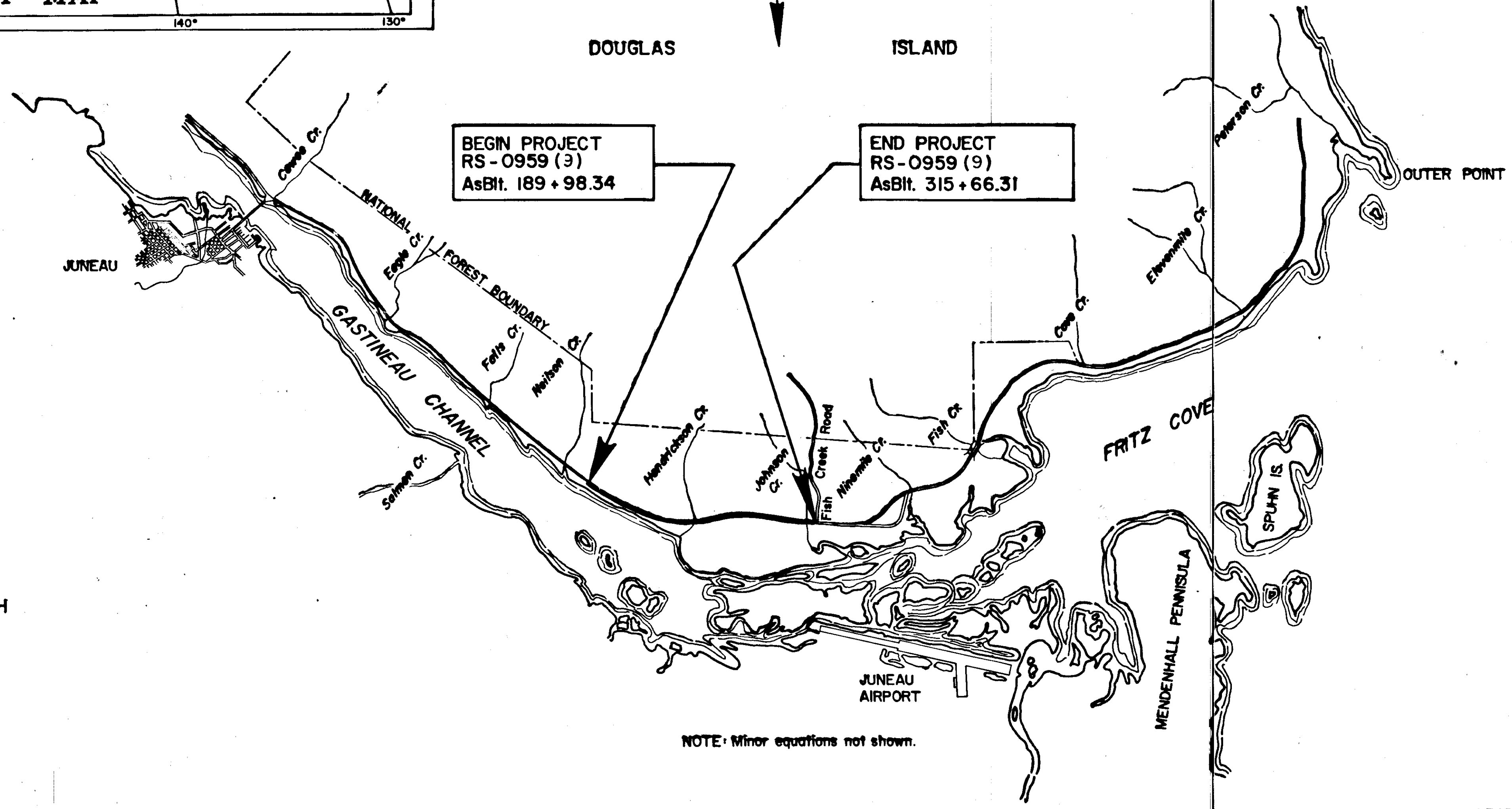
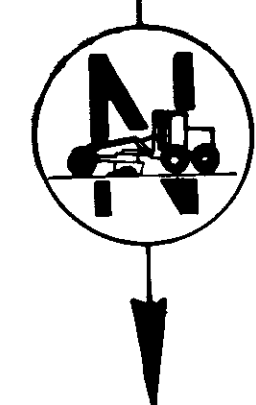
INDEX OF SHEETS

SHEET NO.	DESCRIPTION
1	TITLE SHEET
2	TYPICAL SECTION, ESTIMATE OF QUANTITIES, SUMMARY TABLES & DETAILS

The following standard drawings apply to this project: A-1, C-00.03, C-10.00, C-11.01, and M-16.03, T-21.01, T-22.00

Contractor: Red Samm Mining Co.  
Proj. Engr: Phillip R. Speer  
Beginning Date: July 6, 1977  
Completion Date: September 9, 1977

AS BUILT PLANS



- DESIGN DESIGNATION
- ADT (1976) = 615
  - ADT (1986) = 1150
  - DHV (20%) = 230
  - D = 30-70
  - T = 5.6%
  - V = 50 MPH

PROJECT SUMMARY

WIDTH OF PAVEMENT	= 30'
LENGTH OF PAVING	= 12,599.00' = 2.386 Mi.
LENGTH OF PROJECT	= 12,599.00' = 2.386 Mi.

NOTE: Minor equations not shown.

STATE OF ALASKA DEPARTMENT OF HIGHWAYS

APPROVED *W. K. ...* Date *11/17/77*  
SOUTHEAST DIVISION ENGINEER

STATE OF ALASKA DEPARTMENT OF HIGHWAYS

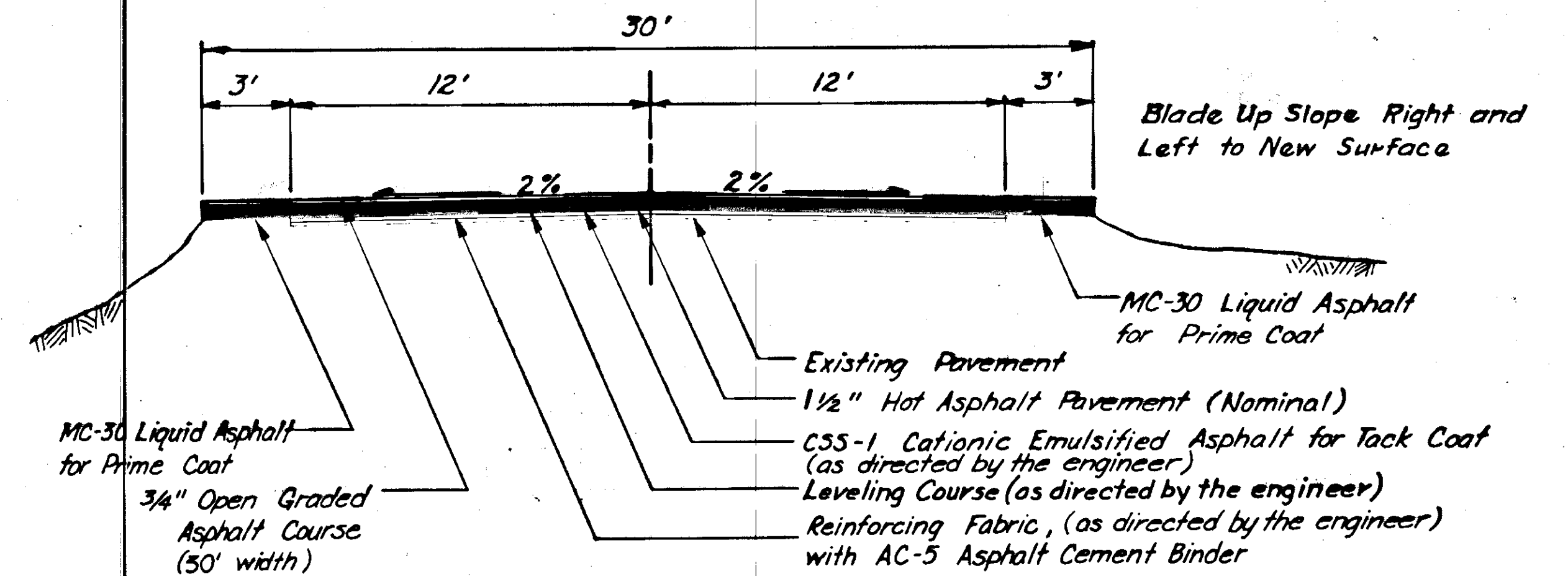
APPROVED *J. S. ...* Date *11/17/77*  
COMMISSIONER OF HIGHWAYS

### MONUMENT SUMMARY

AsBlt. Stationing	Location	Point	Remarks
191 + 38.36	Q	P.C.	Adjust
205 + 91.00	"	P.T.	"
222 + 92.48	"	P.C.	"
239 + 02.52	"	P.T.	"
245 + 21.55	"	P.C.	"
250 + 70.24 Bk=	"	P.T.	"
250 + 75.59 Ahd	"	P.O.T.	"
252 + 90.89	"	P.C.	"
258 + 70.60 Bk=	"	P.T.	"
258 + 72.08 Ahd	"	P.O.T.	"
272 + 92.49	"	P.C.	"
279 + 71.92 Bk=	"	P.T.	"
279 + 72.91 Ahd	"	P.O.T.	"
282 + 42.33	"	P.C.	"
289 + 87.77 Bk=	"	P.T.	"
289 + 88.94 Ahd	"	P.O.T.	"
315 + 36.31	"	P.C.	"

### ESTIMATE OF QUANTITIES

Item No.	Item	Unit	Quantity
1A	Furnishing and Maintaining Engineering Facilities	L.S.	All Req'd
110 (1)	Mobilization	L.S.	All Req'd
111 (1)	Temporary Erosion and Pollution Control	C.S.	All Req'd
115 (1)	Traffic Maintenance	L.S.	All Req'd
301 (1)	Crushed Aggregate Base Course	Ton	79,154
401 (1)	Hot Asphalt Pavement	Ton	4,641,483.5
401 (2)	AC-5 Asphalt Cement	Ton	278,526.62
401(4)	Anti-Stripping Additive	C.S.	All Req'd
401 (3)	Reinforcing Fabric	S.Y.	8,688,858.7
402 (2)	CSS-1 Emulsified Asphalt for Tack Coat	Ton	30,717.84
403 (1)	MC-30 Liquid Asphalt for Prime Coat	Ton	8,555.93
406 (1)	Open Graded Asphalt Friction Course	Ton	1496,149.09
406 (2)	AC-10 Asphalt Cement AR-40	Ton	119,790.58
614 (3)	Adjust Existing Monument Cases	Each	13
620 (1)	Painted Traffic Markings	L.S.	All Req'd
205 (5B)	Borrow	Ton	317.0



TYPICAL SECTION  
"As Blt." 189 + 98.34 to "As Blt." 315 + 66.31

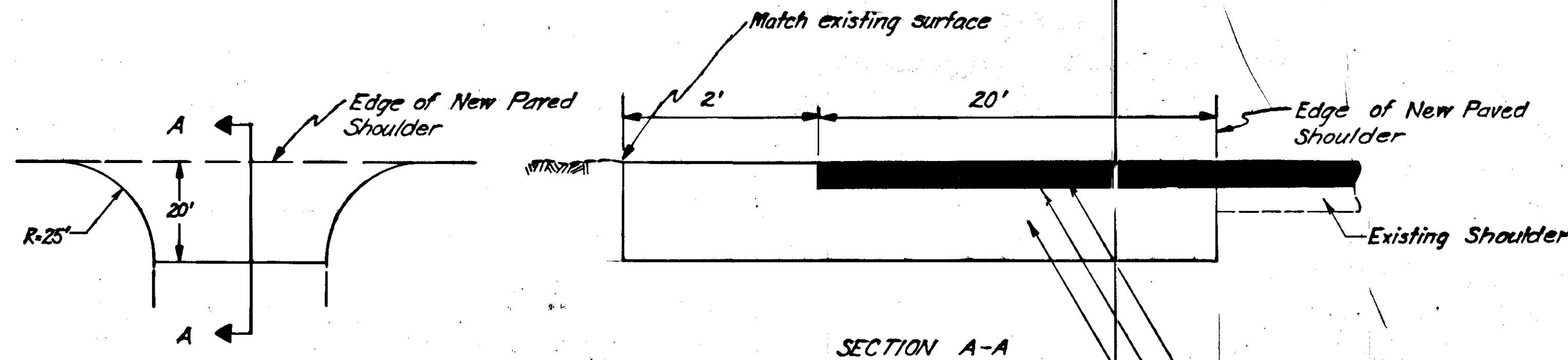
Note: Reinforcing Fabric shall be applied in 12 ft. widths at random locations of pavement distress as directed by the engineer.

#### GENERAL NOTES

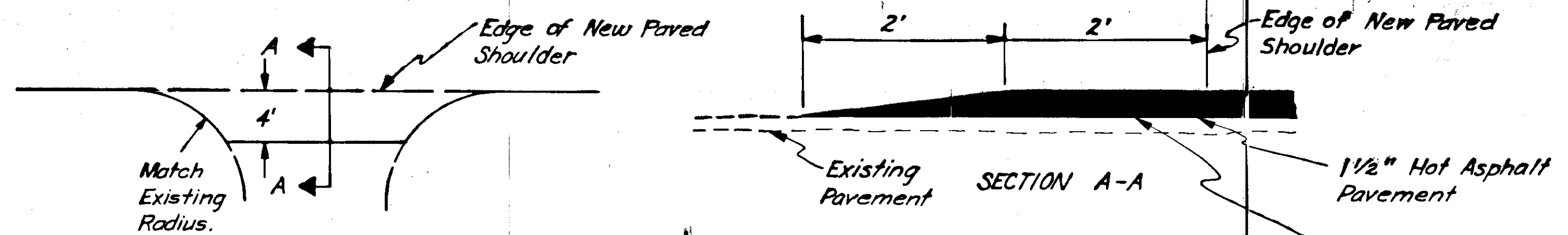
- All stationing referred to on this project was derived from "As Built" Project S-0959 (6).
- "As Blt." Sta 189+98.34 Lt. & Rt. to "As Blt." Sta. 190+73.34 Lt. & Rt. - Removal and Disposal of existing paved shoulder transitions shall be considered incidental to Item 401 (1), Hot Asphalt Pavement.
- Any excavation required shall be considered incidental to Item 301 (1), Crushed Aggregate Base Course.
- The paved intersection and approach surfacing detail does not apply to the existing paved parking pads or to the areas widened and paved for mailboxes. These areas shall be paved full width and depth with 1 1/2" Hot Asphalt Pavement.
- All approaches and intersections shall be paved as detailed on this sheet.
- The transition at the B.O.P. and E.O.P. shall be in the form of a butt joint as detailed below. 25' of existing roadway pavement shall be removed and this removal of pavement shall be considered incidental to 401(1) Hot Asphalt Pavement.

### BASIS OF ESTIMATE

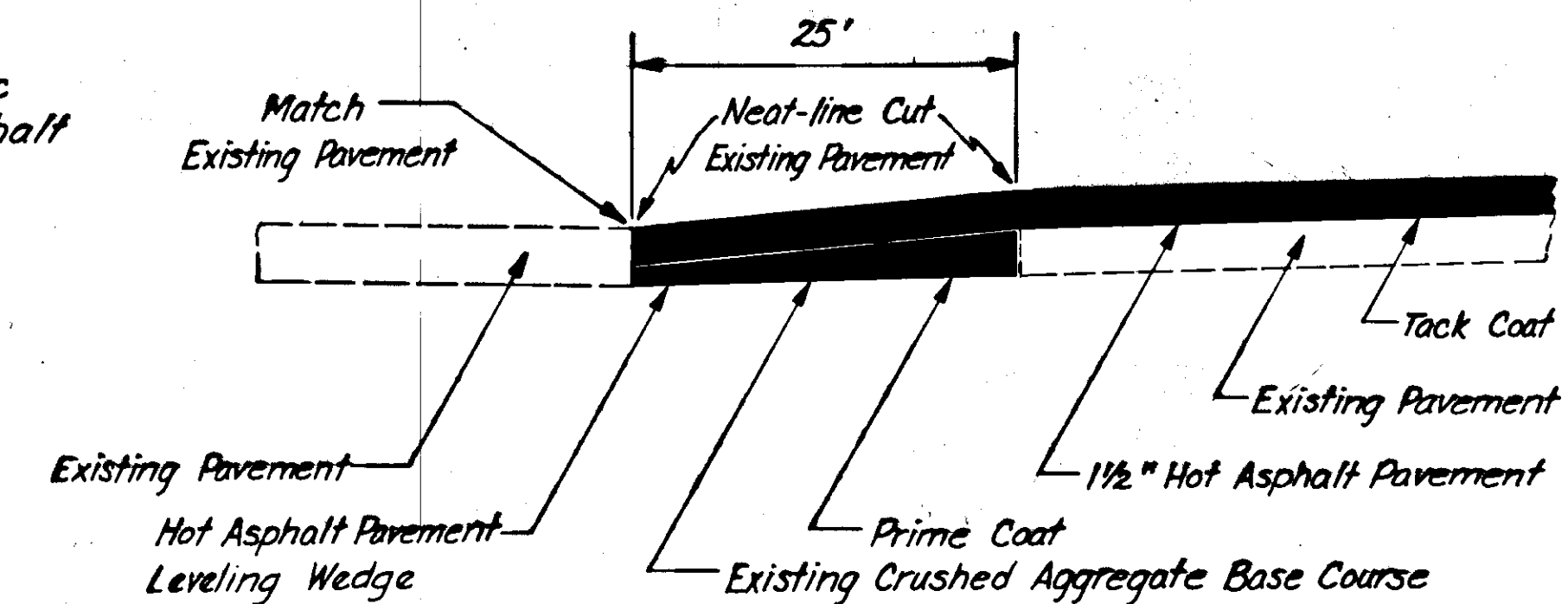
Item	Estimating Factor
301 (1)	1.96 Cu. Yds. per Ton
401 (1)	112 lbs. per Sq. Yd. Inch Depth
401 (2)	6% of Item 401 (1)
401 (3)	0.3 gal. per Sq. Yd. / 238 gal. per Ton
402 (2)	0.10 gals. per Sq. Yd. / 253 gals. per Ton
403 (1)	0.25 gals. per Sq. Yd. / 256 gals. per Ton
406 (1)	95 lbs. per sq. yd. / inch depth
406 (2)	8% of Item 406 (1)



TYPICAL UNPAVED INTERSECTION & APPROACH SURFACING DETAIL  
(See General Note #3)



TYPICAL PAVED INTERSECTION & APPROACH SURFACING DETAIL  
(See General Note #4)



PAVEMENT TRANSITION DETAIL