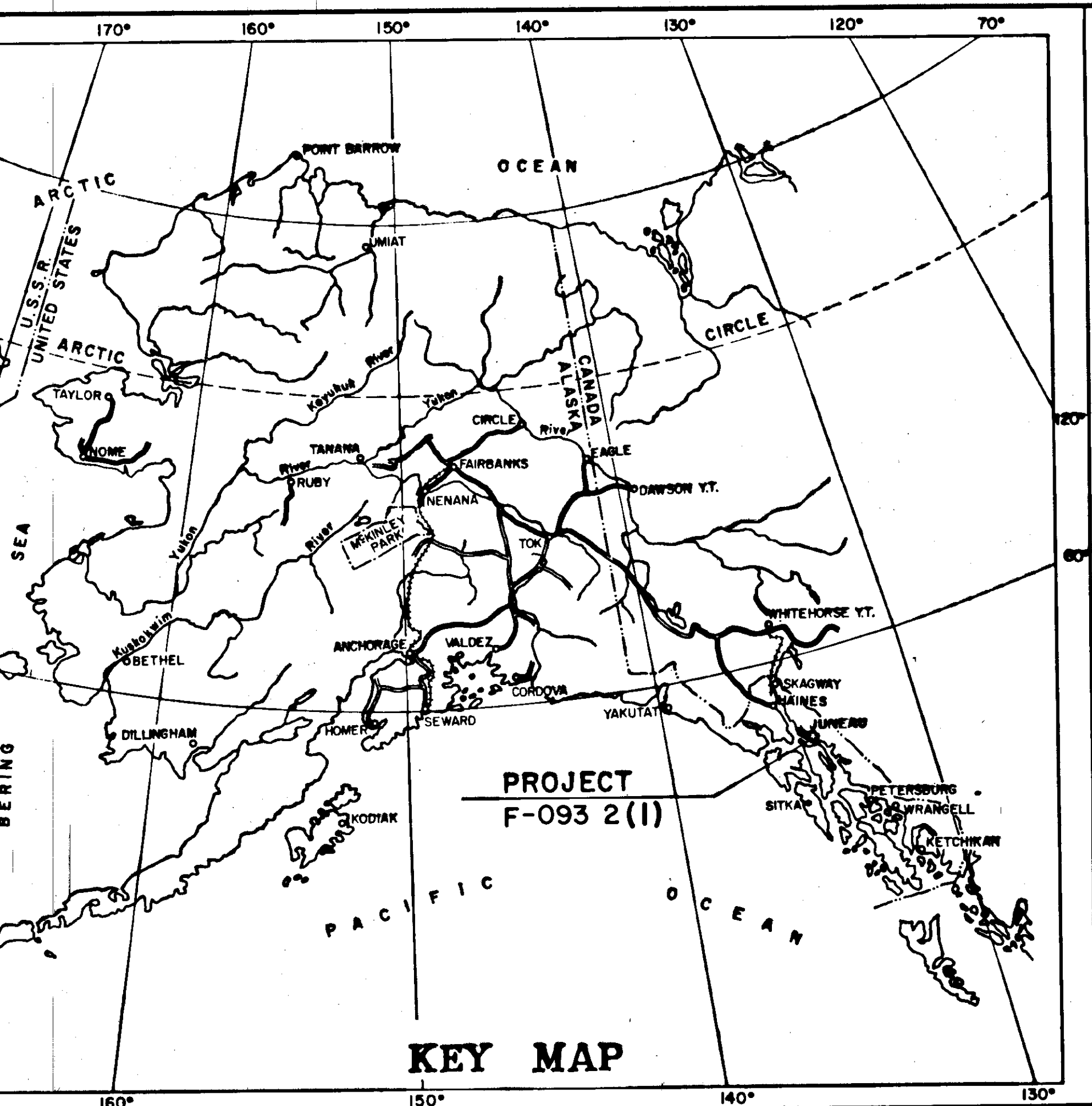


STATE	PROJECT	SHEET NO.	TOTAL SHEETS
ALASKA	F-093 2(1)	1	3



STATE OF ALASKA DEPARTMENT OF HIGHWAYS

PLAN AND PROFILE PROPOSED HIGHWAY PROJECT

F-093-2(1) EGAN DRIVE 10th STREET to NORWAY POINT ASPHALT OVERLAY AS BUILT PLANS

INDEX OF SHEETS

SHEET NO.	DESCRIPTION
1	TITLE SHEET
2	TYPICAL SECTION & EST. OF QUANTITIES
3	PLAN VIEW

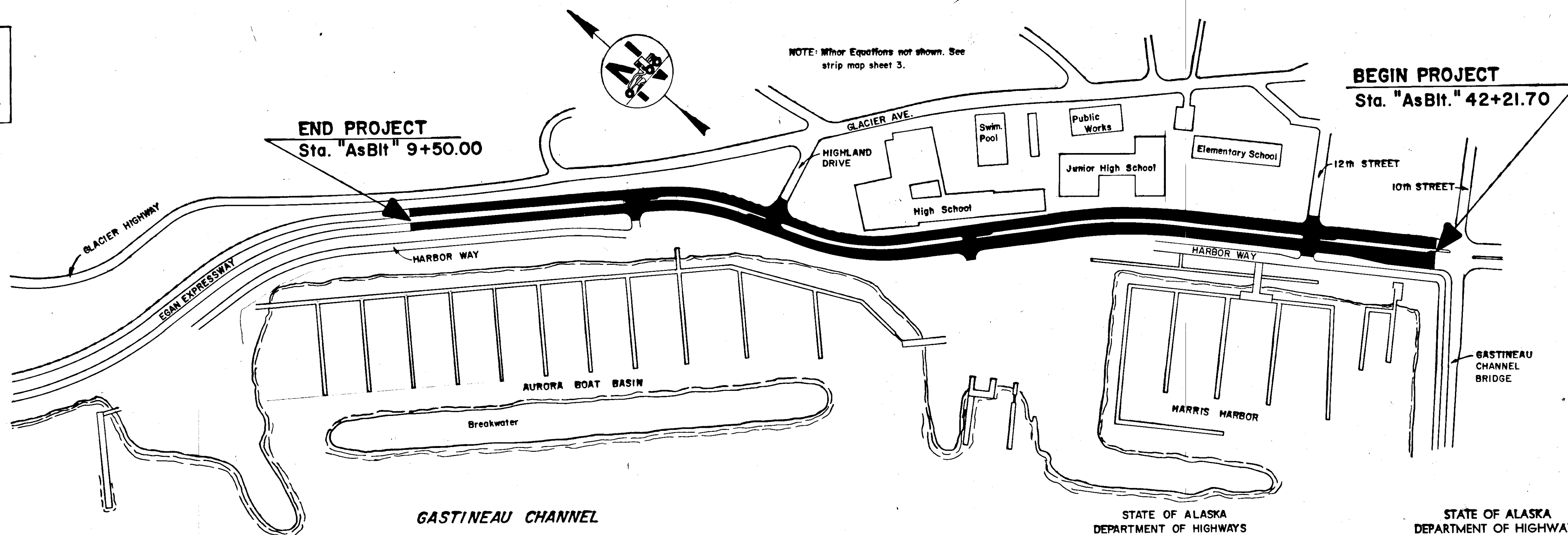
The following Standard Drawings apply to this project: A-1, C-00.03, C-10.00, C-11.01, D-20.10, T-21.01, T-22.00

Contractor: Red Samm Mining Co.
Proj. Engineer: Phillip R. Speer
Beginning Date: July 6, 1977
Ending Date: Sept. 9, 1977

PROJECT SUMMARY

WIDTH of PAVEMENT	DUAL 25'
LENGTH of PAVING	3262.61' = 0.618 Mi.
LENGTH of PROJECT	3262.61' = 0.618 Mi.

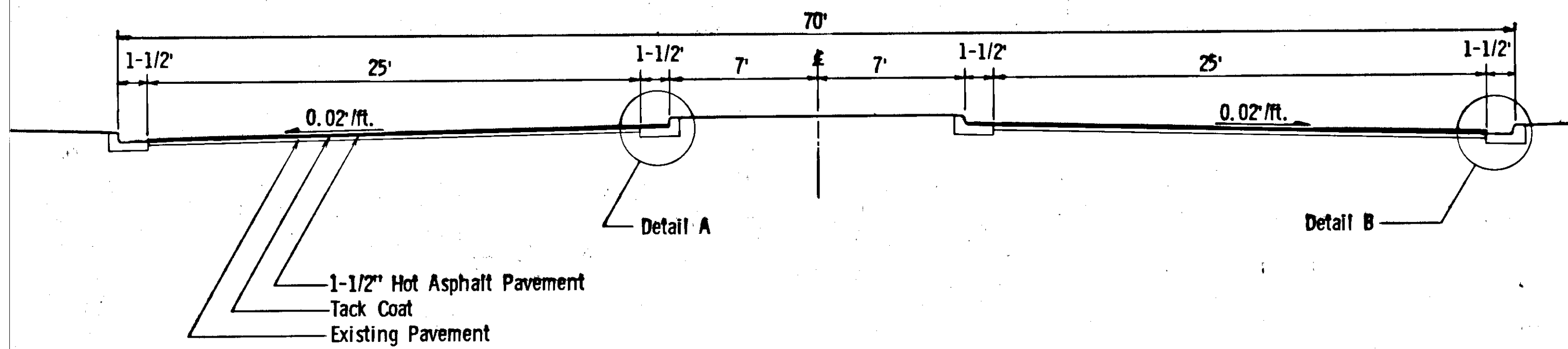
DESIGN DESIGNATION	
ADT (1977)	= 9,828
ADT (1997)	= 19,555
DHV (12%)	= 2,347
D	= 35/65
T	= 5%
V	= 40 MPH



STATE OF ALASKA
DEPARTMENT OF HIGHWAYS
APPROVED
William K. Williams Date 4/14/77
SOUTHEASTERN DIVISION ENGINEER

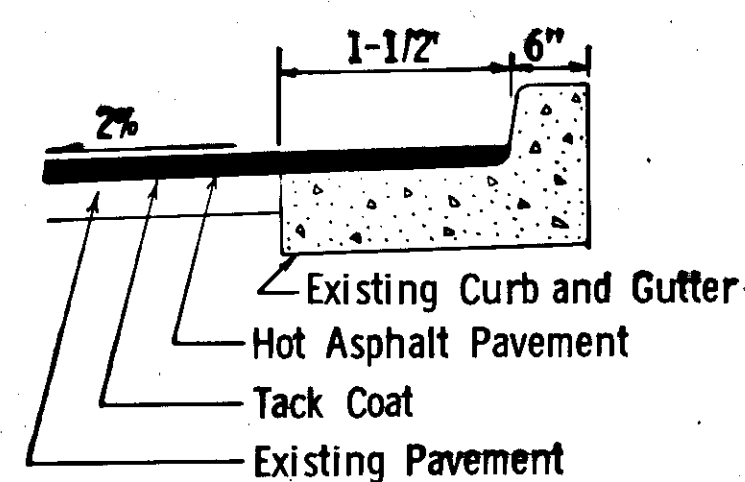
STATE OF ALASKA
DEPARTMENT OF HIGHWAYS
APPROVED
Phillip R. Speer Date 10/24/77
COMMISSIONER OF HIGHWAYS

TYPICAL SECTION

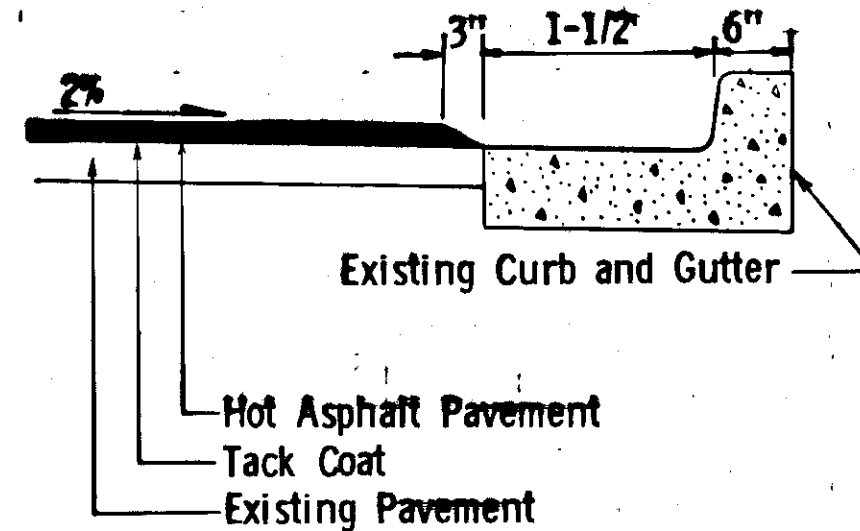


Sta. "AsBit" 42 + 21.70 to Sta. "AsBit" 09 + 50.00

See Gutter Paving Table, Sheet 3.

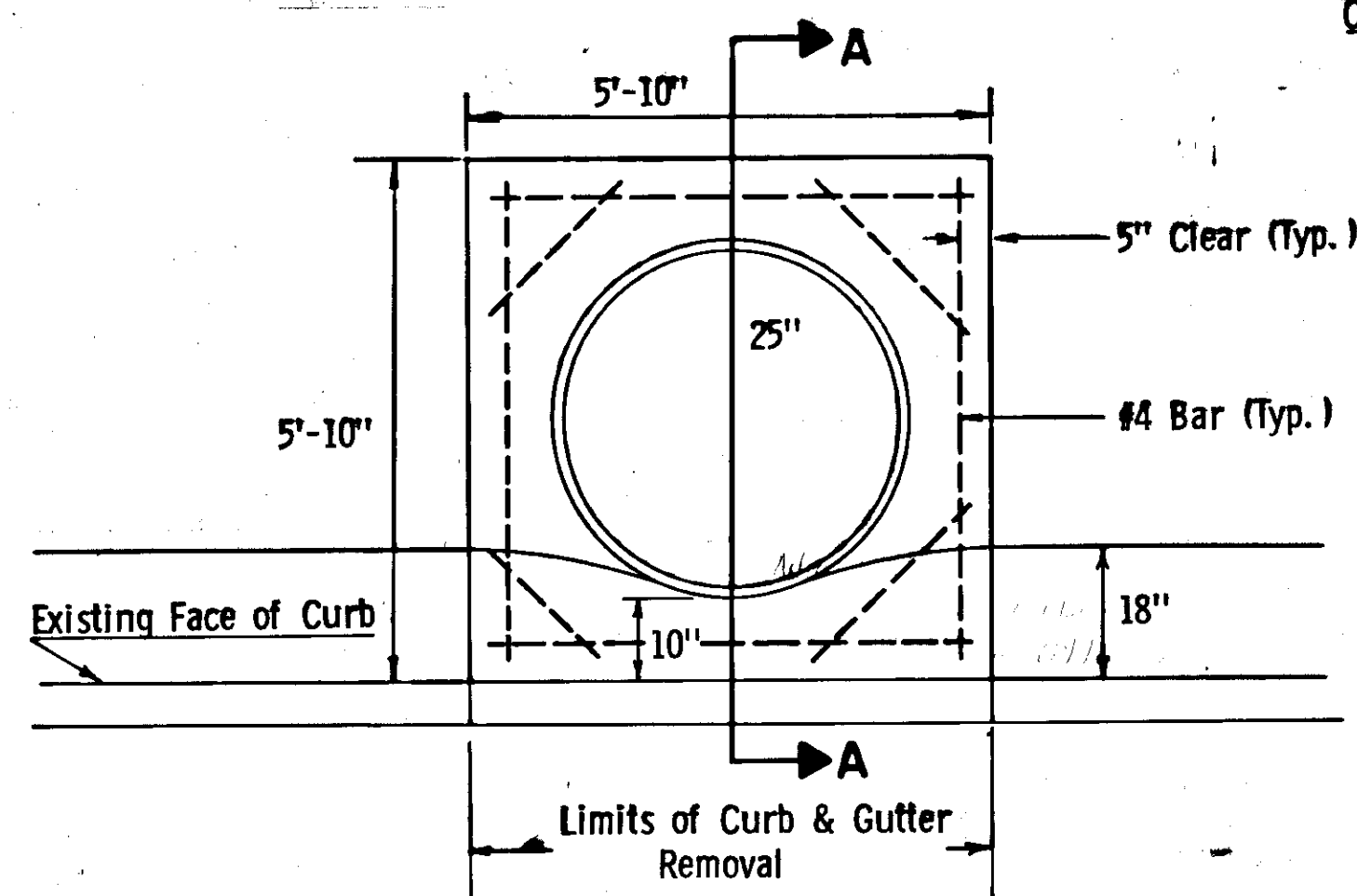


DETAIL A

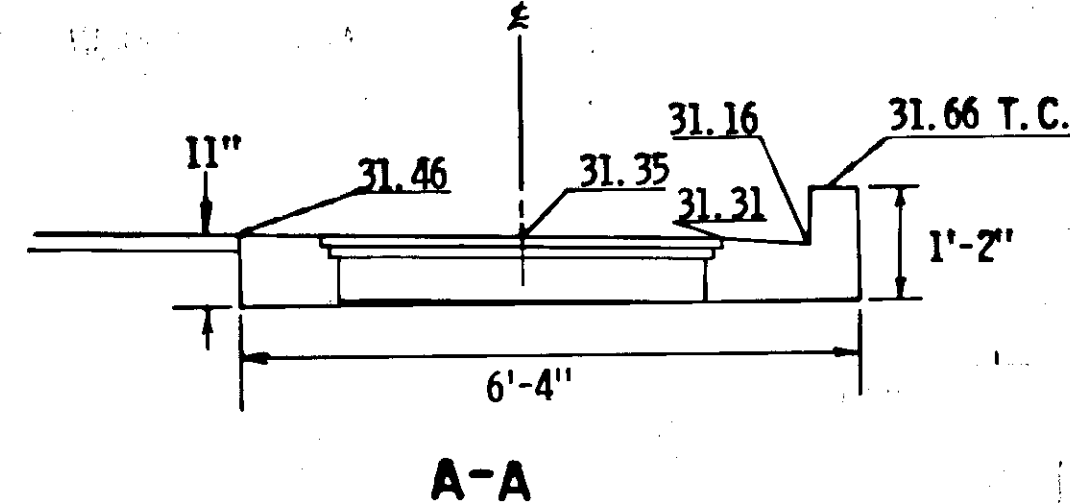


DETAIL B

COLLAR DETAIL AT Sta. "AsBit" 12+72



Note: Removal of existing curb & gutter shall be incidental to pay item #604(3).

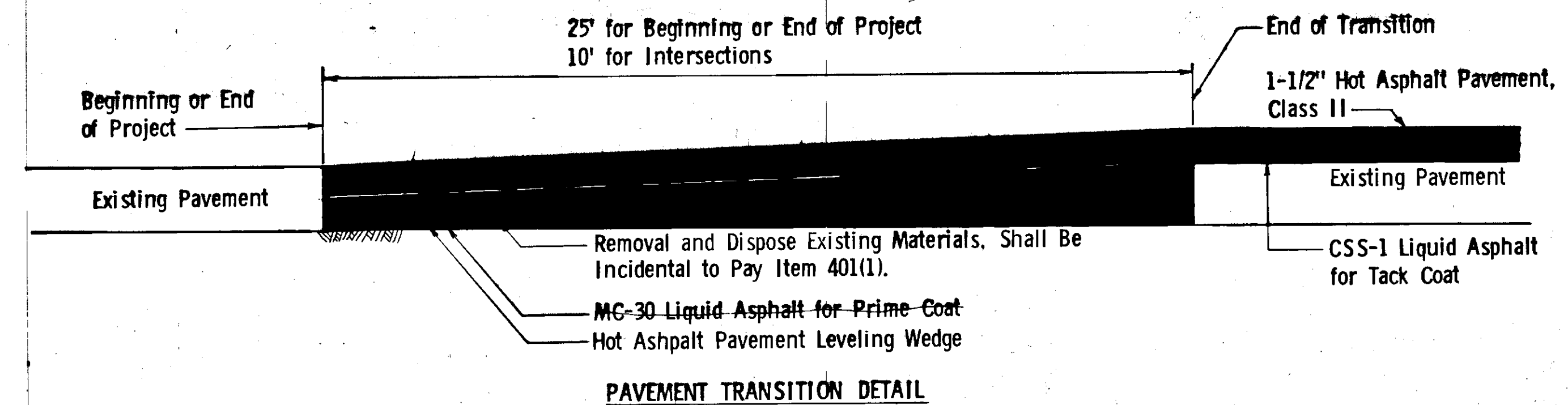


ESTIMATE OF QUANTITIES

Item No.	Item	Unit	Project Total
1A	Furnishing and Maintaining Engineering Facilities	L. S.	All Req'd.
110(1)	Mobilization	L. S.	All Req'd.
111(1)	Temporary Erosion and Pollution Control	C. S.	All Req'd.
115(1)	Traffic Maintenance	C. S.	All Req'd.
401(1)	Hot Asphalt Pavement, Class I	Ton	1956/1965.74
401(4)	Anti-Stripping Additive	C. S.	All Req'd.
401(2)	AC-5 Asphalt Cement	Ton	117.3/103.54
402(2)	CSS-1 Emulsified Asphalt for Tack Coat	Ton	8.5/4.68
403(1)	MC-30 Liquid Asphalt for Prime Coat	Ton	1.4
604(3)	Reconstruct Existing Manhole	Each	1
604(4)	Adjust Existing Manholes	Each	2
614(3)	Adjust Existing Monument Cases	Each	4
870(1)	Painted Traffic Markings	L. S.	All Req'd.

BASIS OF ESTIMATE	
Item	Factor
401(1)	112 lbs. / Sq. Yd. In. Depth
401(2)	6% of Item No. 401(1)
402(2)	0.1 Gal. / Sq. Yd., 253 Gal. / Ton
403(1)	0.25 Gal. / Sq. Yd., 256 Gal. / Ton

General Note: 1. The contractor shall remove all of the sturry seal prior to the application of the tack coat. This work shall be incidental to item 401(1), Hot Asphalt Pavement.



SUMMARY TABLES

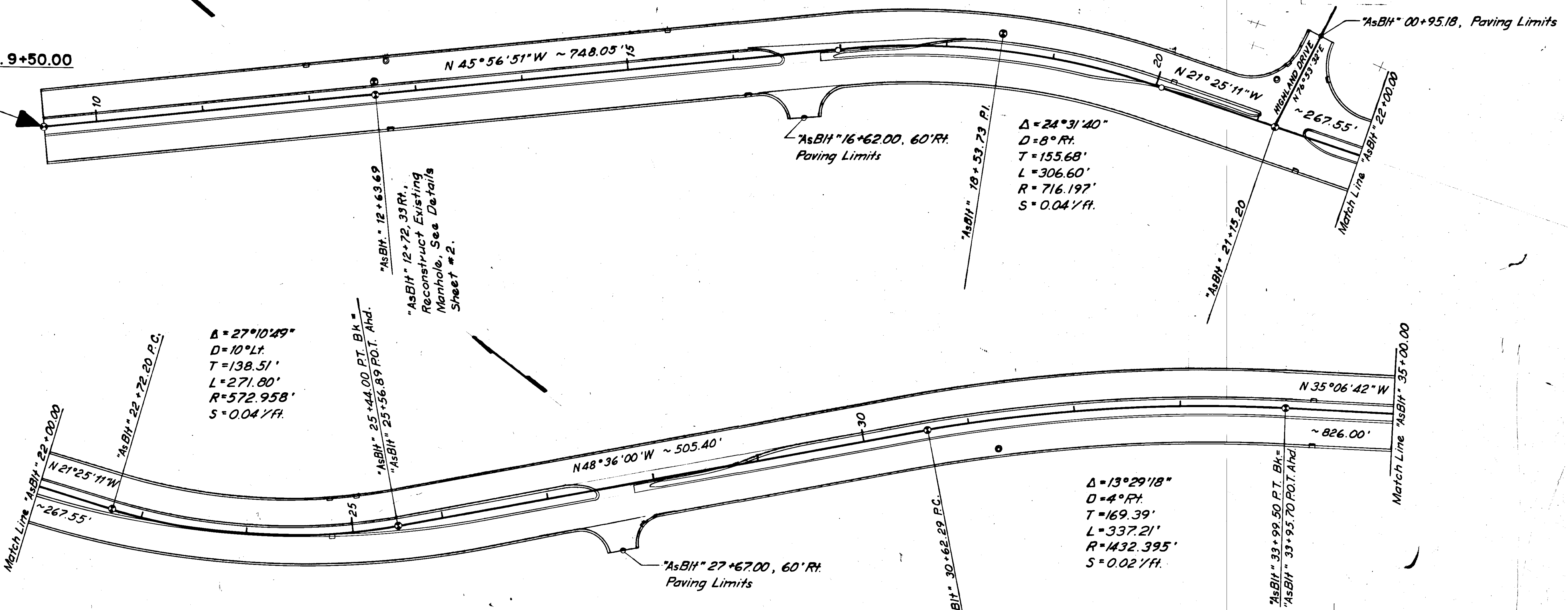
MANHOLE SUMMARY		
Station	Offset	Remarks
"AsBit" 12+72	33' Lt.	Reconstruct, See Details
" 21+04	42' Lt.	Adjust
" 31+28	28' Rt.	Adjust
" 38+18	42' Lt.	Adjusted by Others
" 38+24	51' Lt.	Adjusted by Others
" 38+39	54' Lt.	Adjusted by Others

ADJUST MONUMENTS		
Station	Offset	Point
"AsBit" 12+64.45	10.53 Lt.	City Limits
"AsBit" 18+53.73	16.73 Lt.	P. I.
"AsBit" 21+15.20	℄	P. O. T.
"AsBit" 38+27.50	℄	P. O. T.

PROJECT PLAN VIEW

STATE	PROJECT DESIGNATION	YEAR	SHEET NO.	TOTAL SHEETS
ALASKA	F-093-2(1)	1977	3	3

E.O.P. "AsBit" Sta. 9+50.00



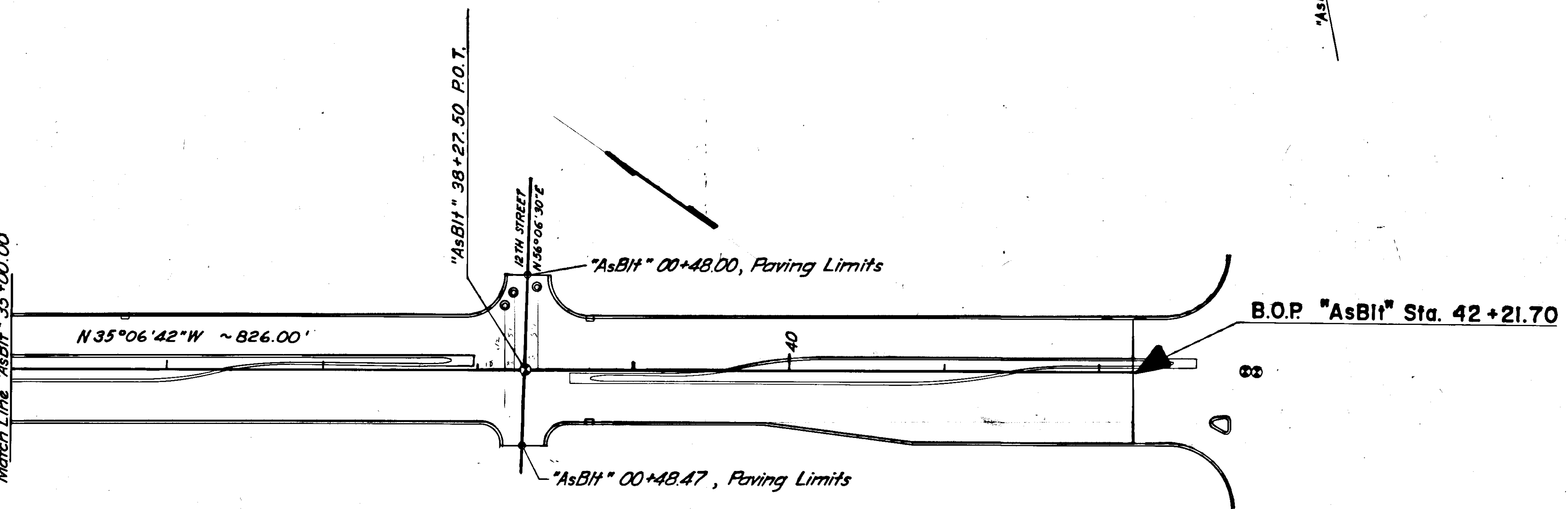
"AsBit" 12+72.39 Rt.,
Reconstruct Existing
Manhole. See Details
Sheet #2.

Δ = 27°10'49"
D = 10° Lt.
T = 138.51'
L = 271.80'
R = 572.958'
S = 0.04'/ft.

Δ = 24°31'40"
D = 8° Rt.
T = 155.68'
L = 306.60'
R = 716.197'
S = 0.04'/ft.

Δ = 13°29'18"
D = 4° Rt.
T = 169.39'
L = 337.21'
R = 1432.395'
S = 0.02'/ft.

Match Line "AsBit" 35+00.00



GUTTER PAVING DETAIL				
From		To		Remarks
Station	Offset	Station	Offset	
"0" 09+50.00	7'Lt.	"0" 16+47.00	7'Lt.	Use Detail "A".
"0" 09+50.00	7'Rt.	"0" 21+00.20	7'Rt.	Use Detail "A".
"0" 21+35.20	7'Lt.	"0" 27+52.00	7'Lt.	Use Detail "A".
"0" 27+82.00	7'Rt.	"0" 42+21.70	7'Rt.	Use Detail "A".
"0" 34+16.53	7'Lt.	"0" 42+21.70	7'Lt.	Use Detail "A".

Note: Detail "A" shall also be used as directed by the Engineer. Otherwise detail "B" shall be used. See sheet 2.