

KEY MAP

**STATE OF ALASKA
DEPARTMENT OF TRANSPORTATION
&
PUBLIC FACILITIES**

**PLAN AND PROFILE
PROPOSED HIGHWAY PROJECT
HES-RS-093-2(19) & R30140
(E30132)**

EGAN DRIVE FACILITIES / GUARDRAIL

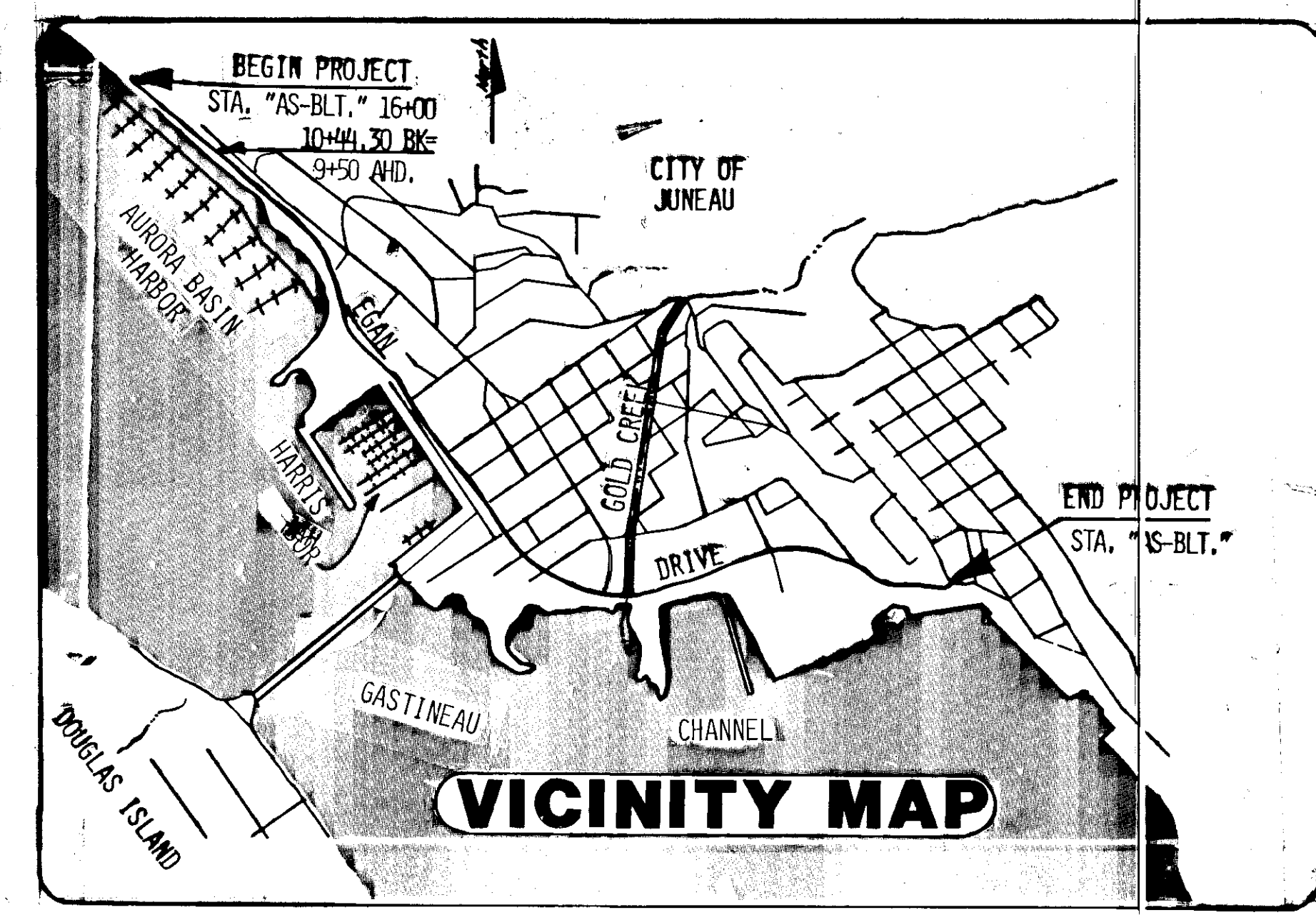
STATE	PROJECT	SHEET NO.	TOTAL SHEETS
ALASKA	HES-RS-093-2(19)	1	11

INDEX OF SHEETS

1	TITLE SHEET
2	ESTIMATE OF QUANTITIES
3-8	PLAN SHEETS
9	HIGHLAND DRIVE INTERSECTION DETAILS
10	SUPPLEMENTAL WORK ESTIMATE OF QUANTITIES SUMMARY TABLES
11	SUPPLEMENTAL WORK PLAN SHEET

THE FOLLOWING STANDARD DRAWINGS ARE INCLUDED IN THIS SET:
C-01.01, C-02.00, C-03.01, C-05.00, C-06.00 (F-01.01, G-12.00, G-14.02S, I-20.00, L-23.00, G-04.01S, D-20.01)

"As-Built" Plans
Contractor: Fosco Inc.
Proj. Engr.: S. Kreuzenstein
Begun: July 16, 1985
Completed: October 11, 1985



VICINITY MAP

STATE OF ALASKA
DEPARTMENT OF TRANSPORTATION
AND
PUBLIC FACILITIES
APPROVED BY: *Walton K. Wilson* DATE: 4/29/85
CHIEF OF DESIGN
SOUTHEAST REGION

STATE OF ALASKA
DEPARTMENT OF TRANSPORTATION
AND
PUBLIC FACILITIES
APPROVED BY: *W. Diekmeyer* DATE: 4/29/85
DIRECTOR DESIGN AND CONSTRUCTION
SOUTHEAST REGION

ESTIMATE OF QUANTITIES

ITEM NO.	ITEM	UNIT	QUANT
110(2)	Mobilization & Demobilization	L.S.	All Req'd
111(1)	Temp. Erosion & Pollution Control	C.S.	All Req'd
114(1)	Const. Surveying by the Contractor	L.S.	All Req'd
115(1)	Traffic Maintenance	L.S.	All Req'd
604(4)	Adjust exist. manholes	ea.	#1
606(1)	Beam Type Guard Rail Type I Post	L.F.	1525 1575
606(5)	Removal & Disposal of Guard Rail	L.F.	6375 645
606(6)	End Anchorages	ea.	5
607(7)	Fence Modification	L.S.	All Req'd
608(1)	Concrete Sidewalk 4" depth	S.Y.	1435.2 1435.3
608(3)	Wheel Chair Ramp	ea.	9 + 0
618(1)	Seeding	m.s.f.	1.5
109(2)	DBE and WBE Adjustments	C.S.	All Req'd
660(3)	Highway Lighting System Complete	L.S.	All Req'd
671(1)	Electric Conduit Relocation	L.F.	1539
674(1)	Reconstruct Turn Lane	L.S.	All Req'd

SIDEWALK SUMMARY

STATION	TO STATION	REMARKS
43+63 Lt.		match exist. Sidewalk
	51+15+03 Lt.	match exist. Sidewalk
53+10 Lt.		
	53+58 Lt.	
"B" 11+74 Rt.		match exist. Sidewalk
	54+48 Lt.	match exist. Sidewalk
55+74 Lt.		match exist. Sidewalk
	65+96 Lt.	match exist. Sidewalk
69+40 Rt.		match exist. Sidewalk
	69+49 Rt.	match exist. Sidewalk

ADJUST MANHOLE SUMMARY

STATION	LT.	RT.
48+90	✓	
49+96	✓	
51+25	✓	
52+55	✓	
54+13	✓	
57+95	✓	
60+30	✓	
63+20	✓	19+81.6
67+12	✓	
45+25	✓	
47+13	✓	
		15+00.8
		19+81.6

FENCE MODIFICATION

STATION	TO STATION	L.F.
26+04		1436
25+30 Rt.	41+80 Rt.	1510

REMOVAL AND DISPOSAL OF GUARD RAIL

BEGIN STA.	END STA.	L.F.
"As Built"	"As Built"	
15+25 Rt.	15+00 Rt.	25
"As Built"	"As Built"	
18+85 Rt.	24+90 Rt.	26+07
"As Built"	"As Built"	
41+80 Rt.	42+45 Rt.	37.5

BEAM TYPE GUARDRAIL TYPE III POST

BEGIN STA.	END STA.	L.F.
"As Built"	"As Built"	14+06
15+25 Rt.	13+94.3 Rt.	92.5
"As Built"	"As Built"	26+01
18+85 Rt.	24+90 Rt.	612.5
"As Built"	"As Built"	37.5

GENERAL NOTES:

(1) Project identification signing shall be as per the Manual on Uniform Traffic Control Devices.

(2) Areas to be seeded
 a. median reconstructed at Highland Drive turn lane (Sht. 9)
 b. embankment disturbed as a result of electric conduit relocation

(3) Traffic Control Plan shall be as shown on Sheet 3, except as otherwise indicated.

(4) Two-lane traffic shall be maintained from 7 a.m. to 9 a.m. southbound, & 4 p.m. to 6 p.m. northbound on Egan Drive, Monday thru Friday.

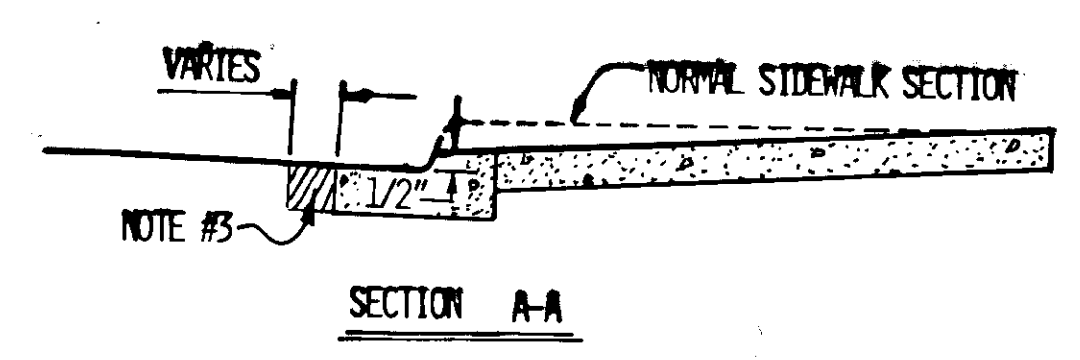
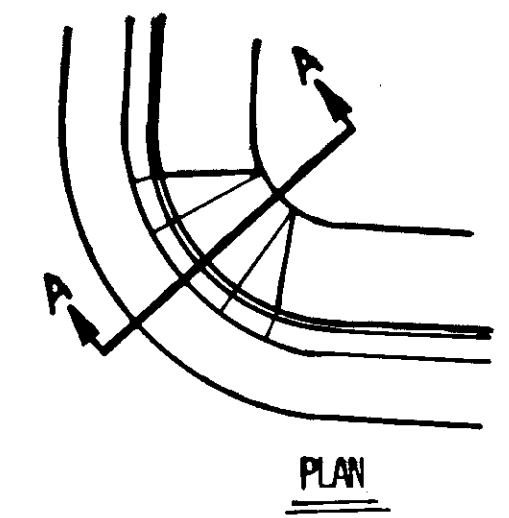
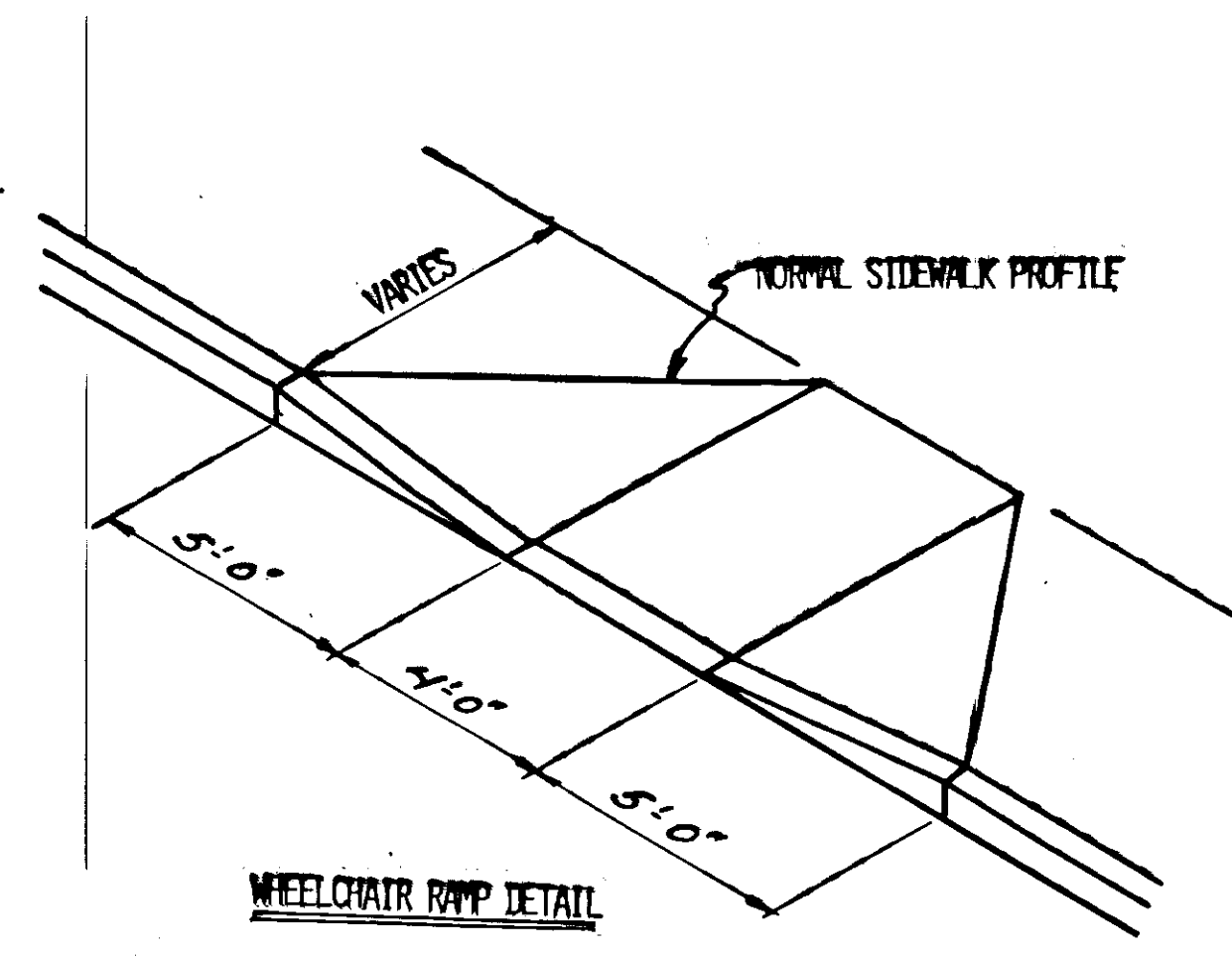
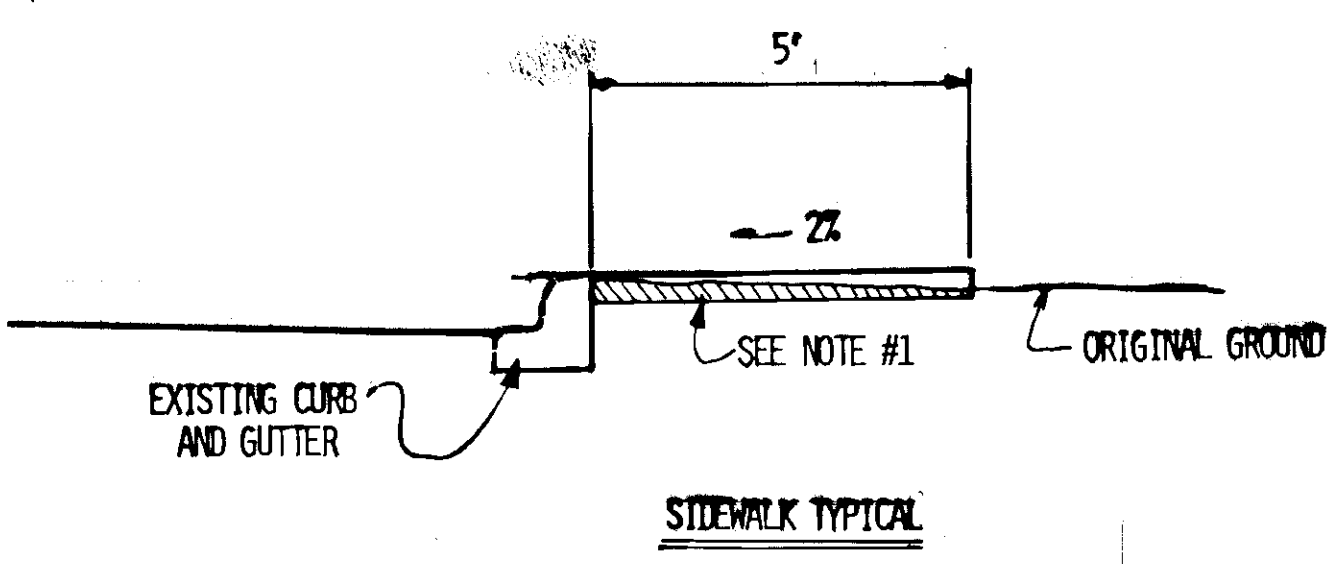
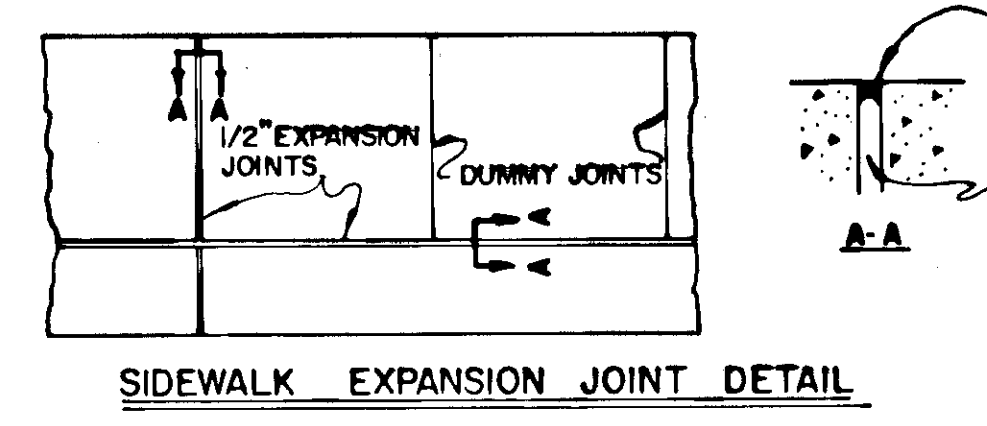
NOTE: The face of guardrail shall be in the same vertical plane as the face of curb, except for flares at terminal end.

ILLUMINATION NOTES:

- ALL ELECTRICALS BETWEEN THE EQUATION STATION (10+49.3 BK. = 9+50 AHEAD) AND 10TH STREET SHALL BE REFITTED WITH 250 WATT MEDIUM/CUT-OFF/TYPE III HIGH PRESSURE SODIUM LUMINAIRES. THE FOLLOWING LOCATIONS HAVE BEEN REFITTED WITH 250 W. H.P.S. LUMINAIRES AND REQUIRE NO WORK.
 - 11+45, 41' RT.
 - 12+30, 41' LT.
 - 20+65, 41' LT.
 - 21+65, 41' RT.
- THE TOTAL NUMBER OF ELECTRICALS TO BE RETROFITTED IS 38. THIS INCLUDES THE TWO ON HIGHLAND DRIVE.
- THE 400 WATT MERCURY VAPOR LUMINAIRES SHALL BECOME THE PROPERTY OF THE CONTRACTOR.
- THE ADJUSTMENT TO THE SIDEWALK GRADE OF THE J-BOX (STATION 62+00 LT AND 52+80 LT.) SHALL BE INCIDENTAL TO ITEM 660(3) HIGHWAY LIGHTING SYSTEM. THE ADJUSTMENT TO THE SIDEWALK GRADE OF THE ELECTRICAL BOX (STA. 78+78 LT.) SHALL BE INCIDENTAL TO ITEM 660(3).

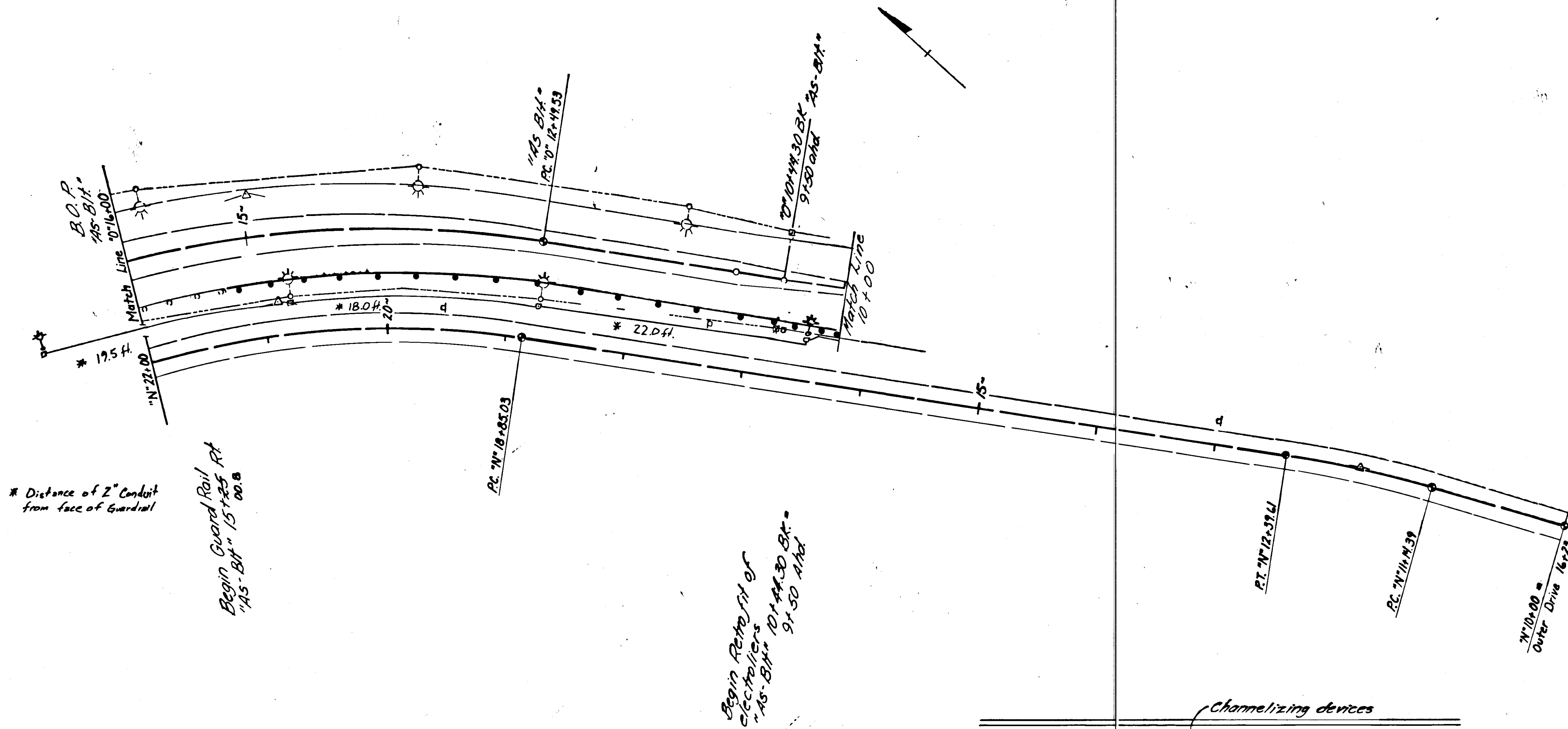
WHEELCHAIR RAMP NOTES

- WHEELCHAIR RAMPS SHALL BE CONSTRUCTED AS DETAILED ON THIS SHEET AT LOCATIONS DESIGNATED BY A ● ON THE PLAN SHEETS.
- THE WORK AND MATERIALS NECESSARY TO COMPLETE THE WHEELCHAIR RAMPS IN DETAIL AT STATIONS 52+86 AND 53+80 ON SHEET 6 IS INCIDENTAL TO ITEM 608(1) CONCRETE SIDEWALK.
- IF EXISTING MATERIAL IS REMOVED TO FACILITATE FORMING OF THE CURB, HOT ASPHALT PAVEMENT AS APPROVED BY THE ENGINEER SHALL BE USED FOR THE REPAIR. THIS WORK SHALL BE INCIDENTAL TO ITEM 608(4) WHEELCHAIR RAMP OR ITEM 608(1) CONCRETE SIDEWALK AS PER NOTE #2.

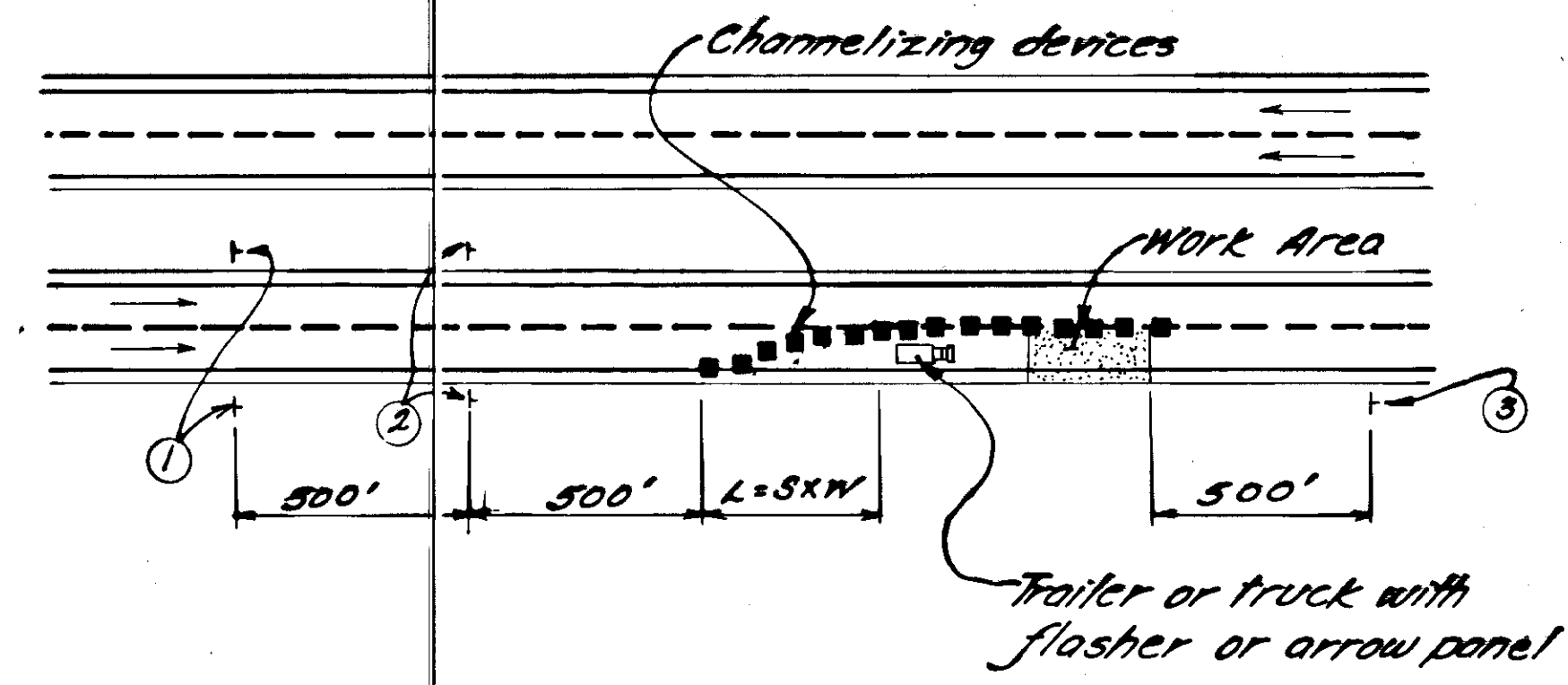


- THE EXCAVATION AND THE DISPOSAL OF THE MATERIAL REQUIRED TO CONSTRUCT THE SIDEWALK SHALL BE CONSIDERED INCIDENTAL TO ITEM 608(1) CONCRETE SIDEWALK. THE EXCAVATED MATERIAL SHALL BE REMOVED FROM THE PROJECT OR MAY BE BLENDED TO MATCH THE EXISTING GROUND IF APPROVED BY THE ENGINEER.
- REMOVE AND DISPOSE THE ASPHALT SIDEWALK AT 69+49 RT. AND "B" 14+50 LT. THE WORK IS INCIDENTAL TO ITEM 608(1) CONCRETE SIDEWALK.
- SIDEWALK EXPANSION JOINTS SHALL BE OPPOSITE EXPANSION CURB AND GUTTER JOINTS. DUMMY JOINTS SHALL BE EQUALLY SPACED BETWEEN EXPANSION JOINTS AND THE SPACING SHALL NOT EXCEED 6'





* Distance of 2" Conduit from face of Guardrail



NOTES
 (1) Taper Formula:
 $L = WS^2 / 60$

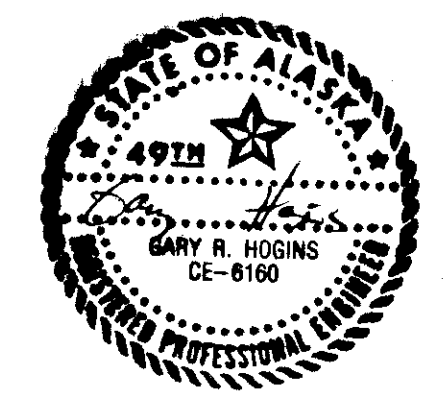
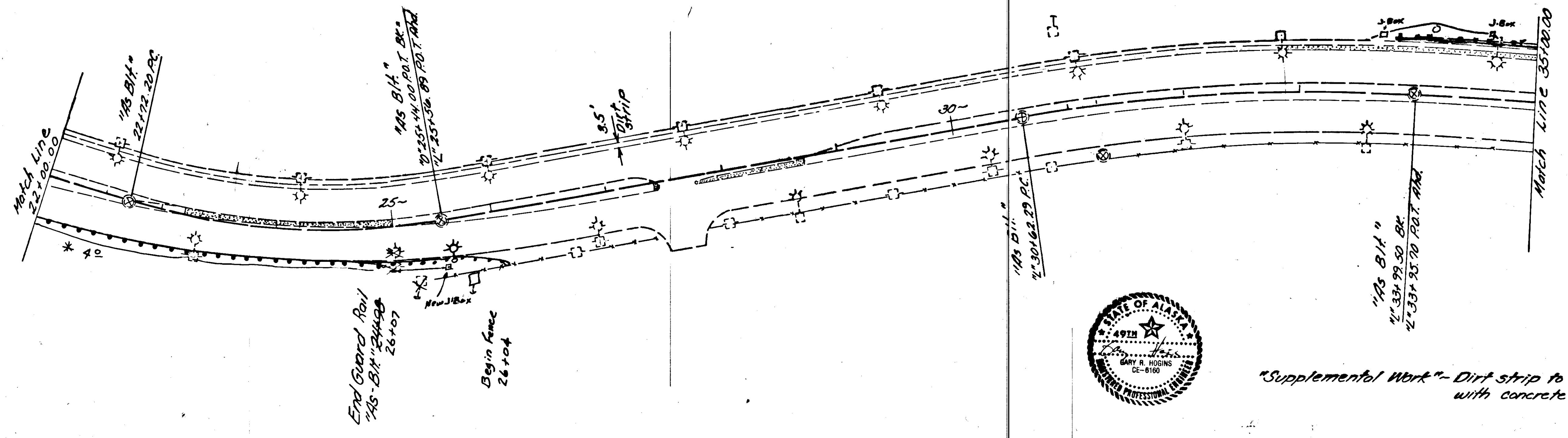
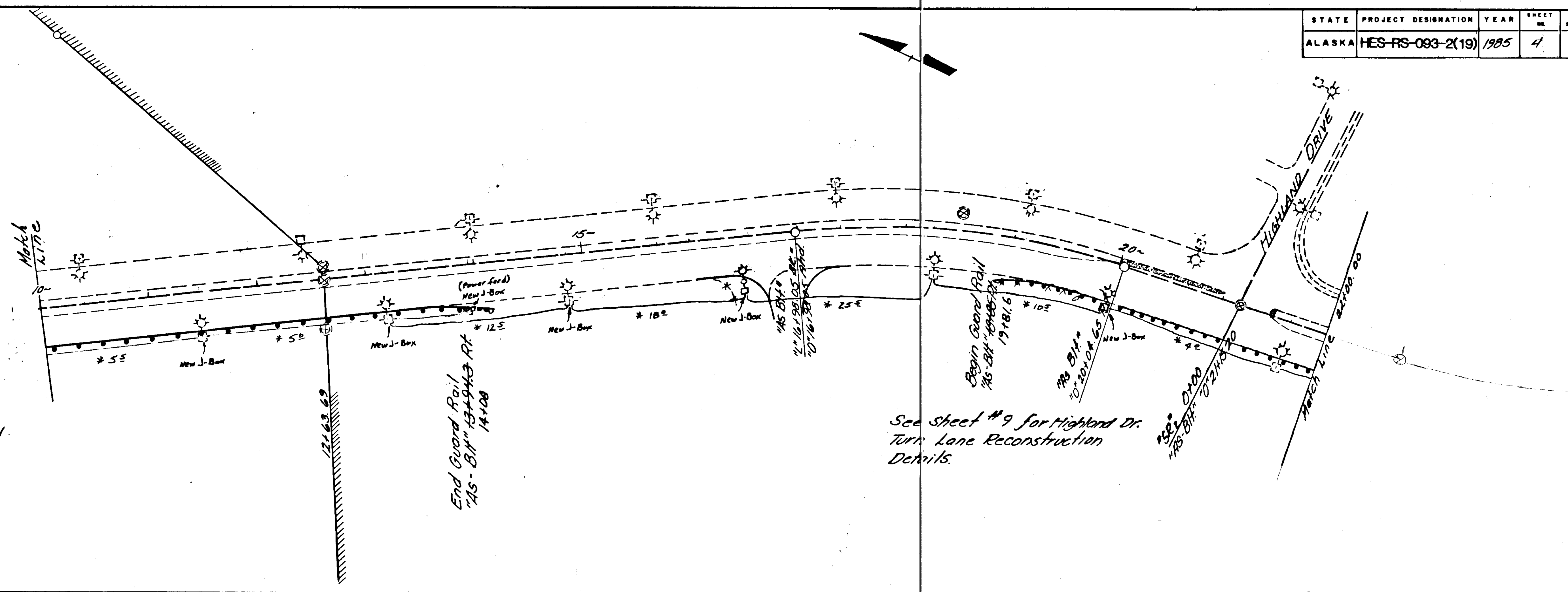
Where:
 L = minimum length of taper
 S = numerical
 W = width of offset
 (2) Maximum spacing between channelizing devices in a taper should be approx. equal in feet to the speed limit.

No.	SIZE	M.U.T.C.D. DESIG.	SIGN WORDING
①	48" x 48"	OW20-1F	Road Construction Ahead
②	48" x 48"	OW20-5RF	Right Lane Closed Ahead
③	60" x 24"	G20-2	End Construction



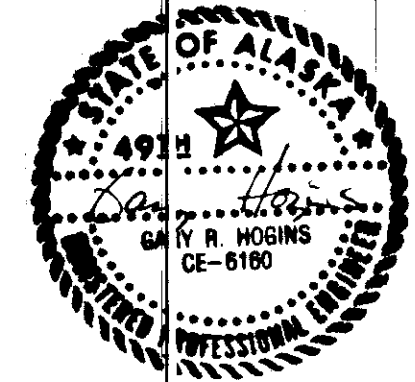
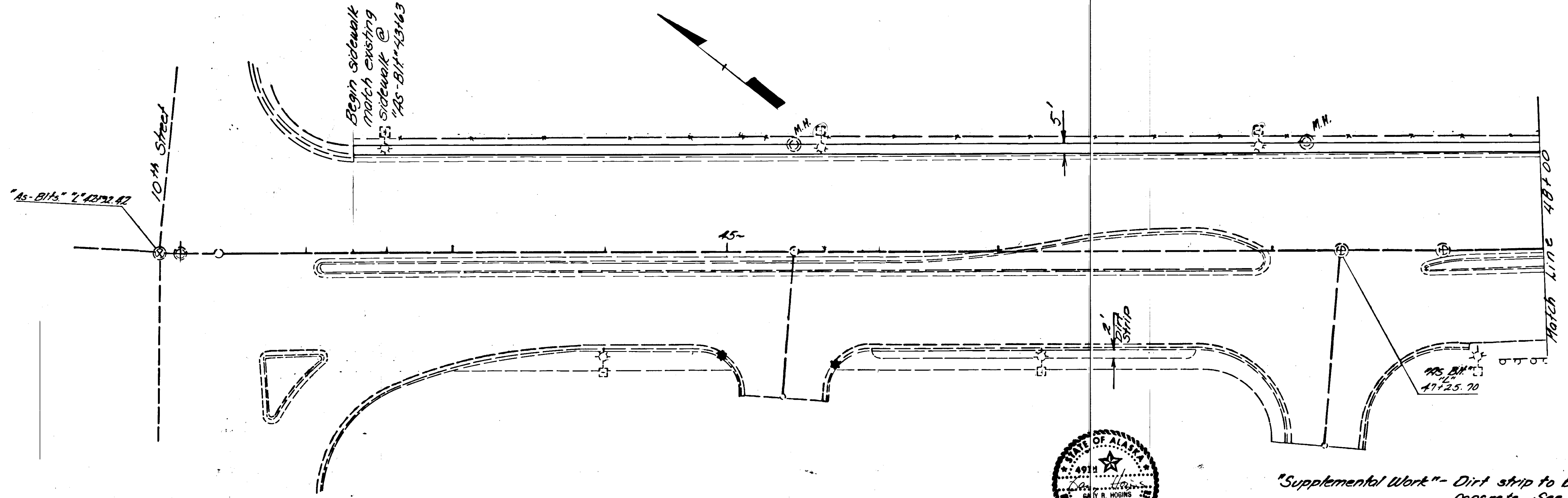
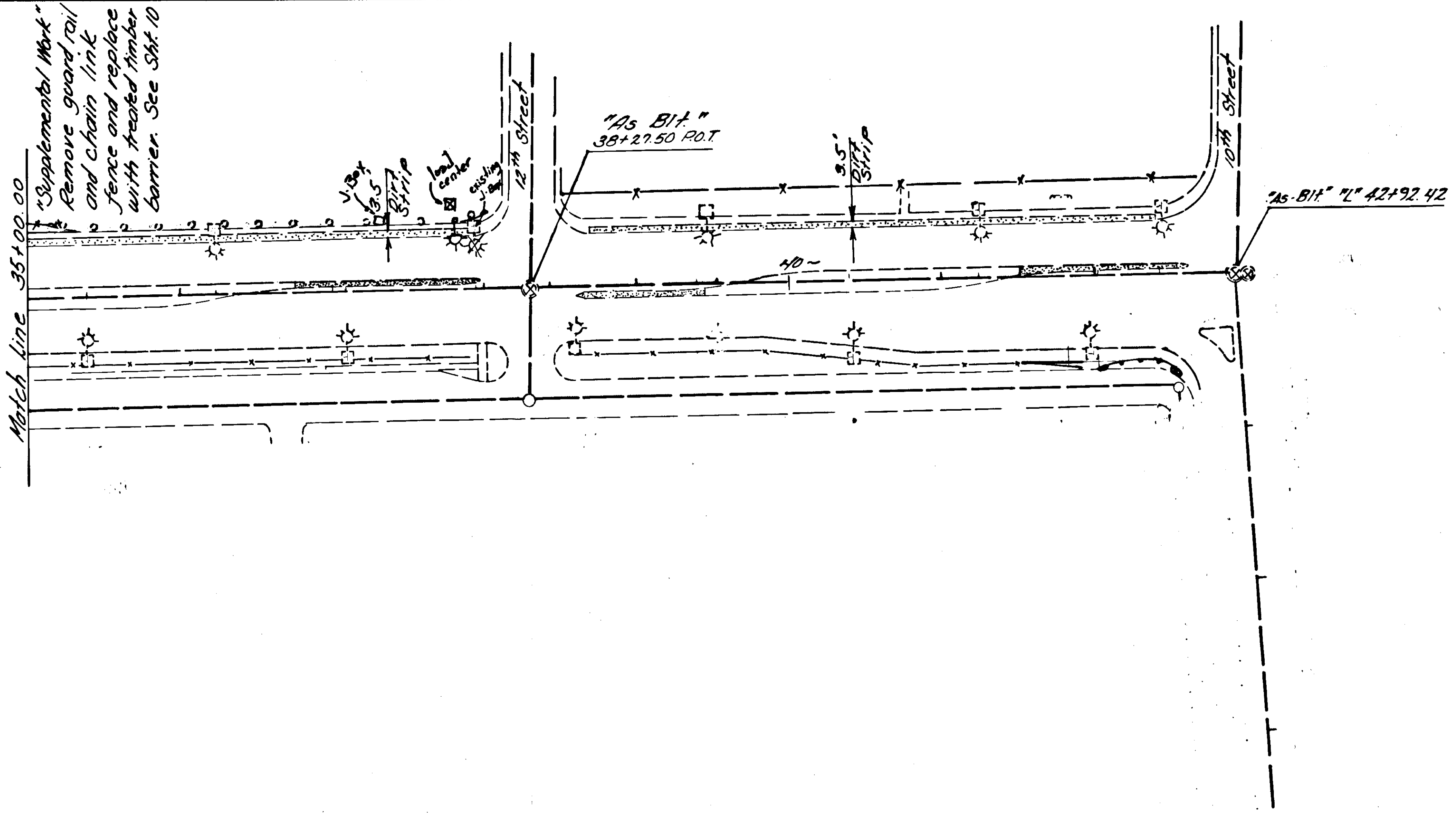
STATE	PROJECT DESIGNATION	YEAR	SHEET NO.	TOTAL SHEETS
ALASKA	HES-RS-093-2(19)	1985	4	11

Distance of
* 2" Conduit Run from
face of guardrail and
face of curb



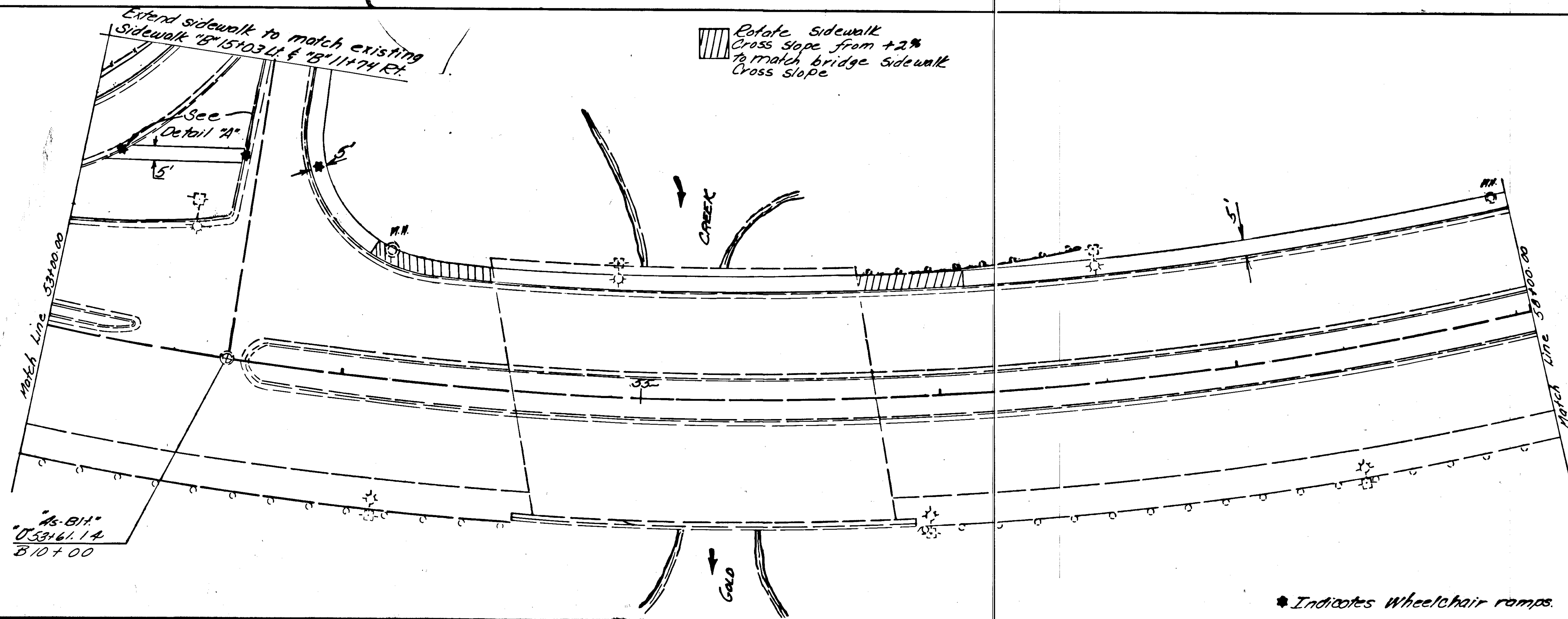
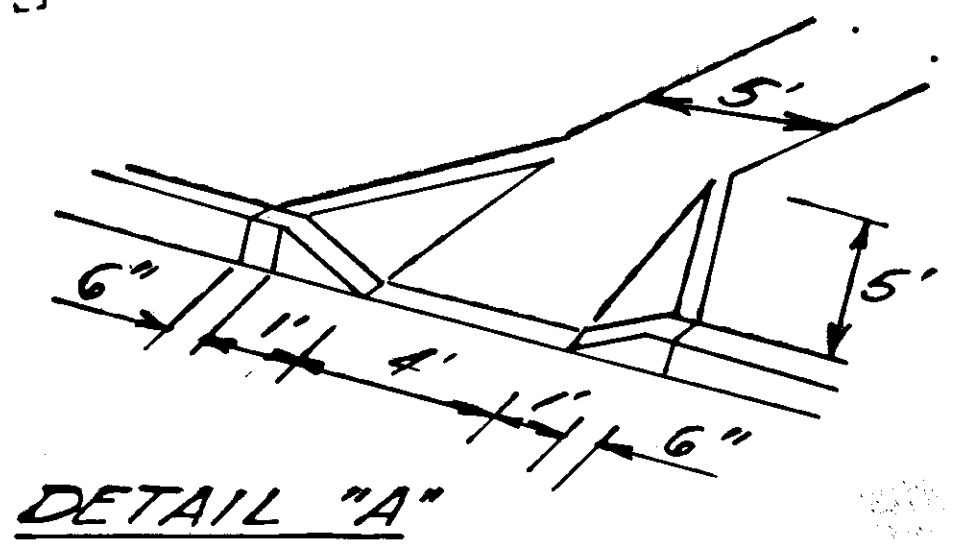
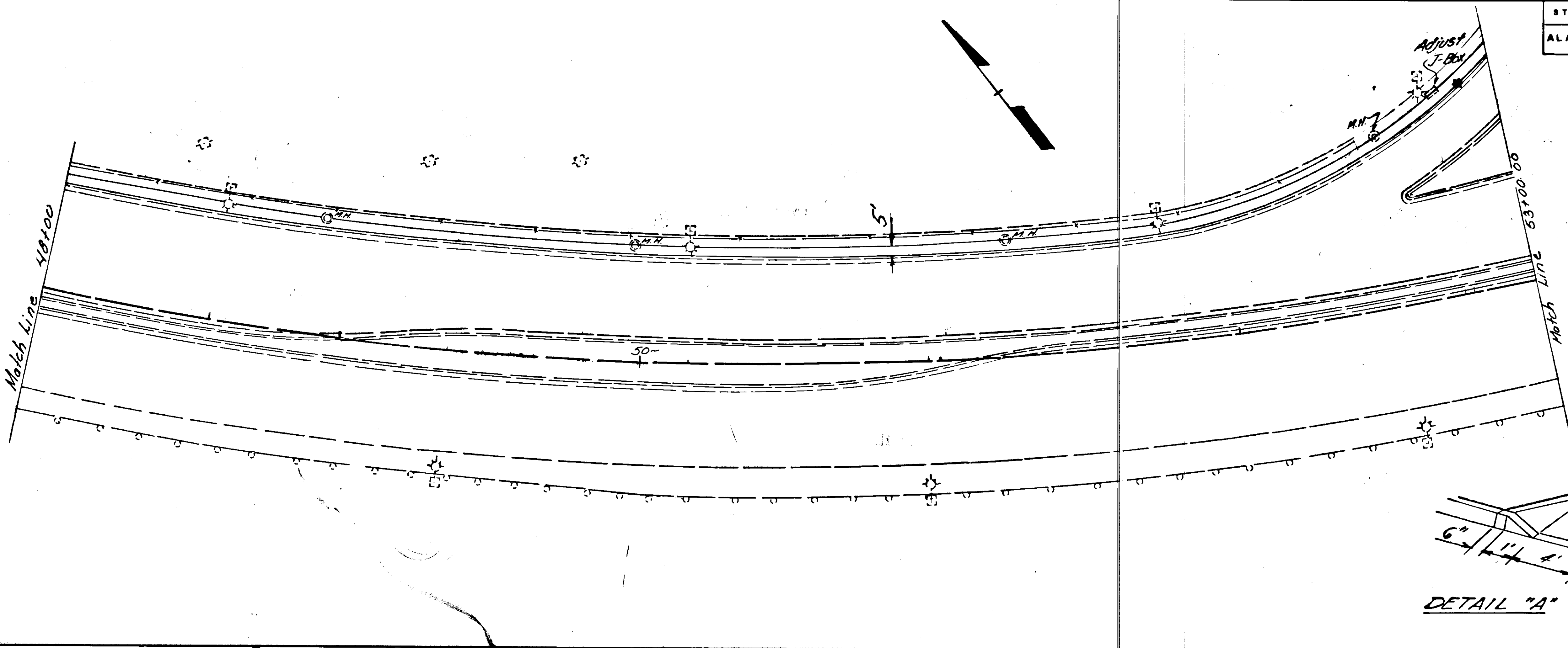
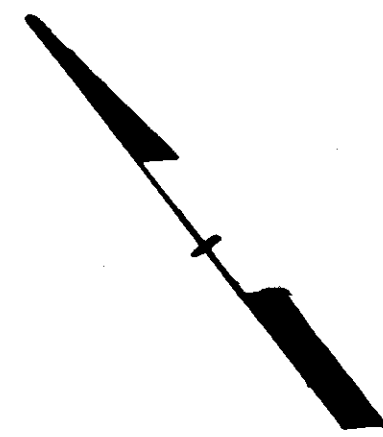
"Supplemental Work" - Dirt strip to be filled
with concrete. See Sht. #10

STATE	PROJECT DESIGNATION	YEAR	SHEET NO.	TOTAL SHEETS
ALASKA	HES-RS-093-2(19)	1985	5	11



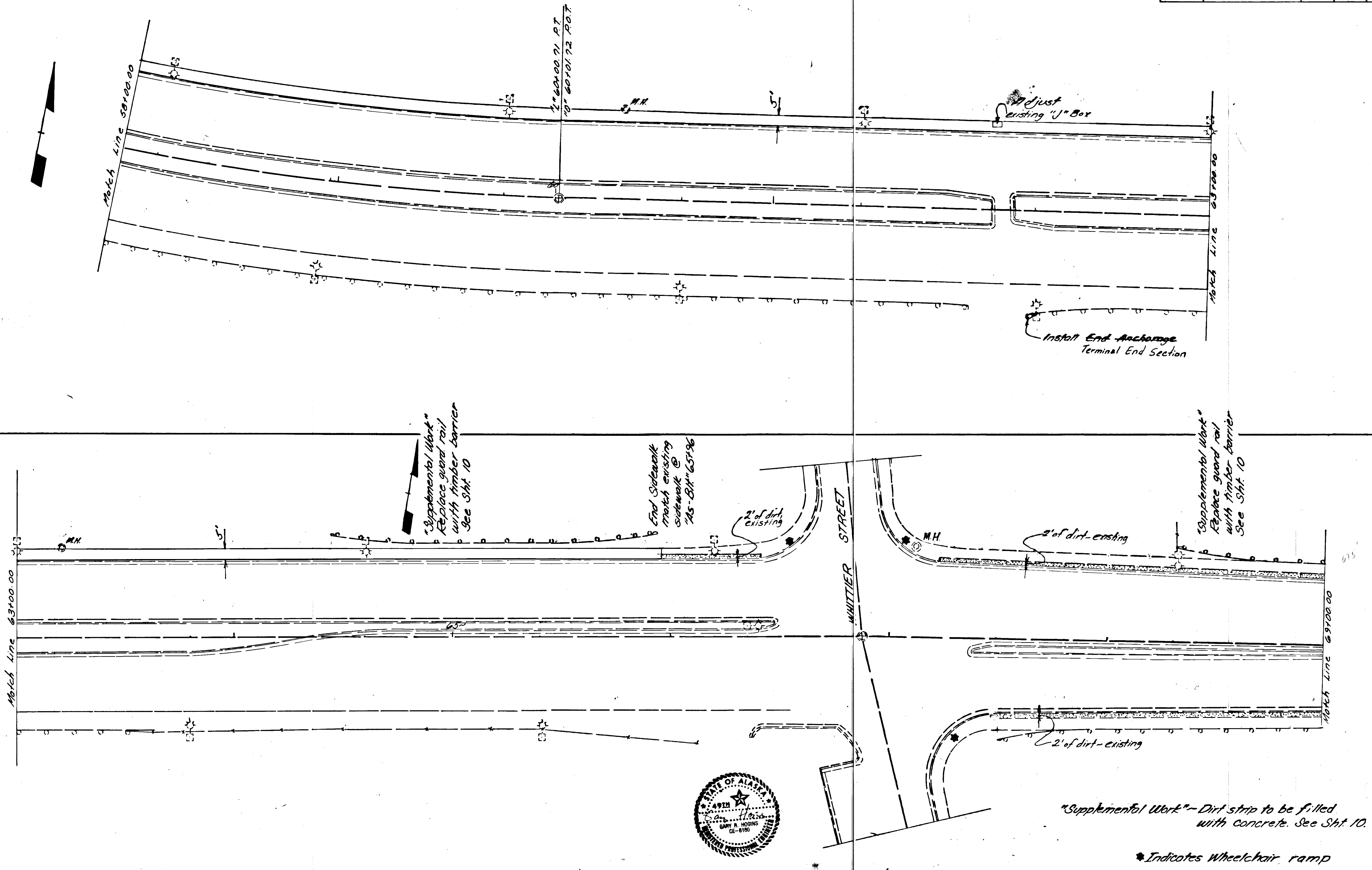
"Supplemental Work" - Dirt strip to be filled with concrete. See Sht. 10
 * Indicates Wheelchair ramp

STATE	PROJECT DESIGNATION	YEAR	SHEET NO.	TOTAL SHEETS
ALASKA	HES-RS-093-2(19)	1985	6	11



* Indicates Wheelchair ramps.

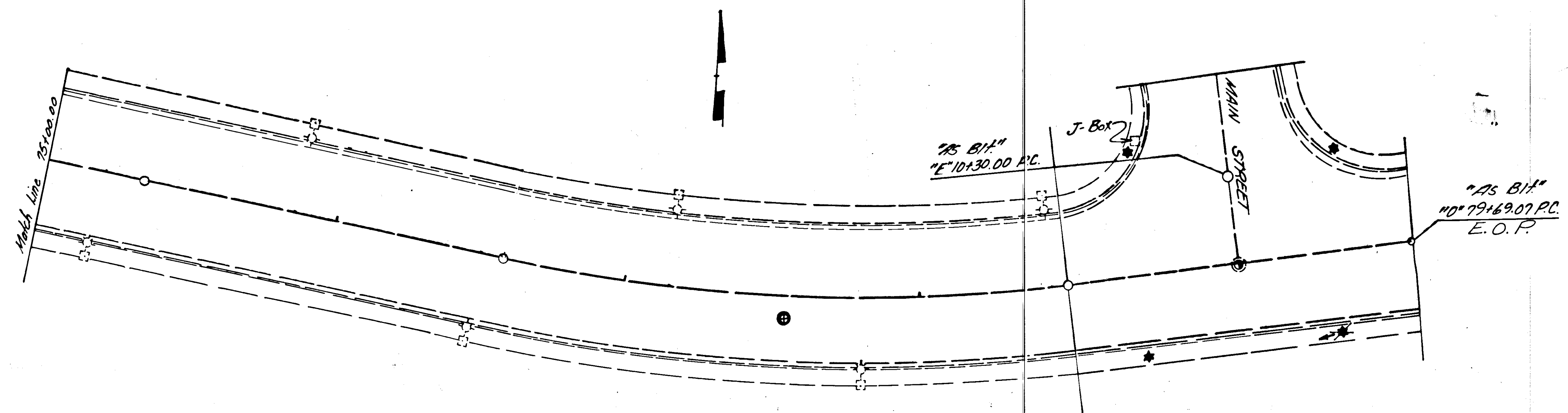
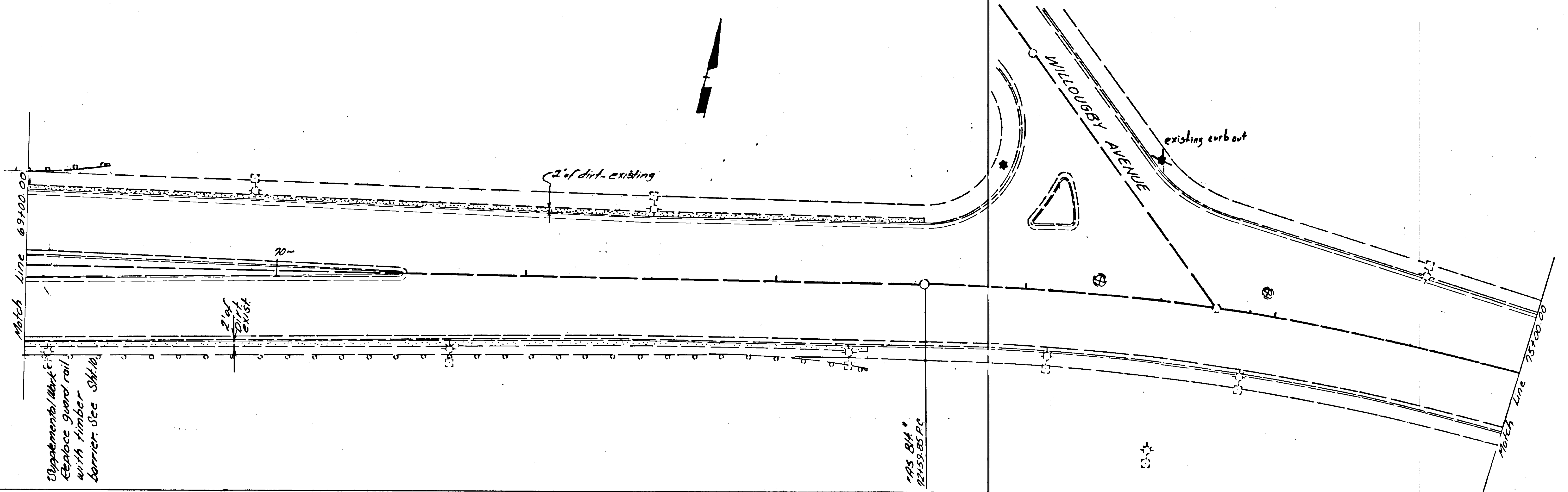
STATE	PROJECT DESIGNATION	YEAR	SHEET NO.	TOTAL SHEETS
ALASKA	HES-RS-093-2(19)	1985	7	11



"Supplemental Work" - Dirt strip to be filled with concrete. See Sht. 10.

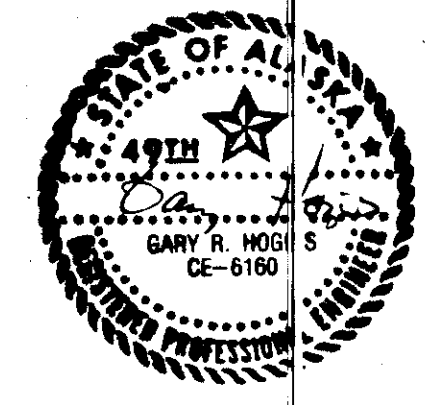
* Indicates Wheelchair ramp

STATE	PROJECT DESIGNATION	YEAR	SHEET NO.	TOTAL SHEETS
ALASKA	HES-RS-093-2(19)	1985	8	11

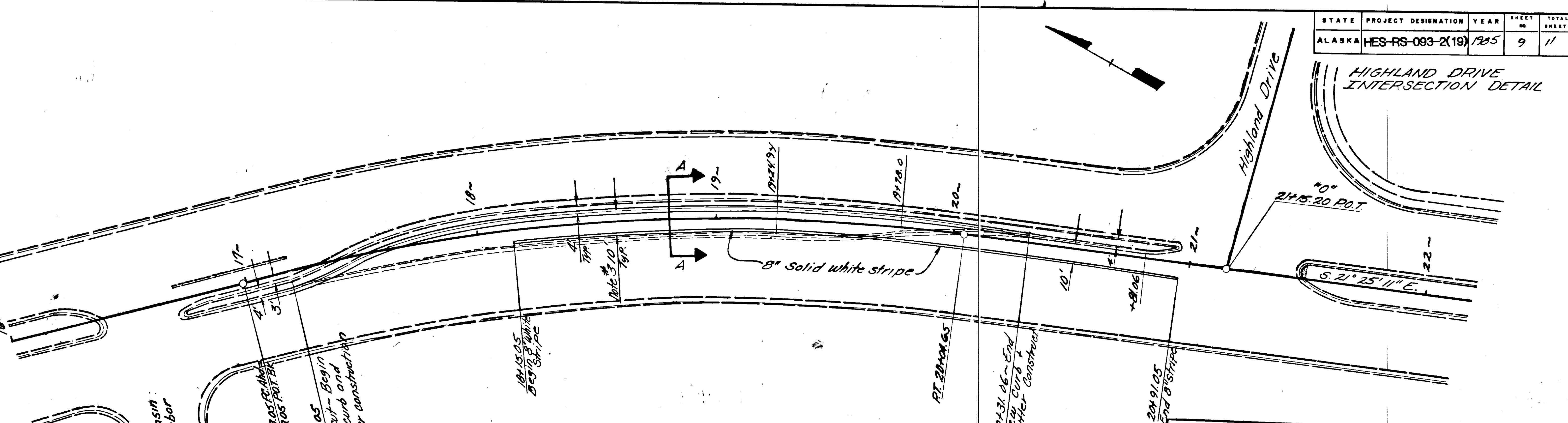


"Supplemental Work" - Dirt strip to be filled with concrete. See Sht. 10

★ Indicates Wheelchair ramp



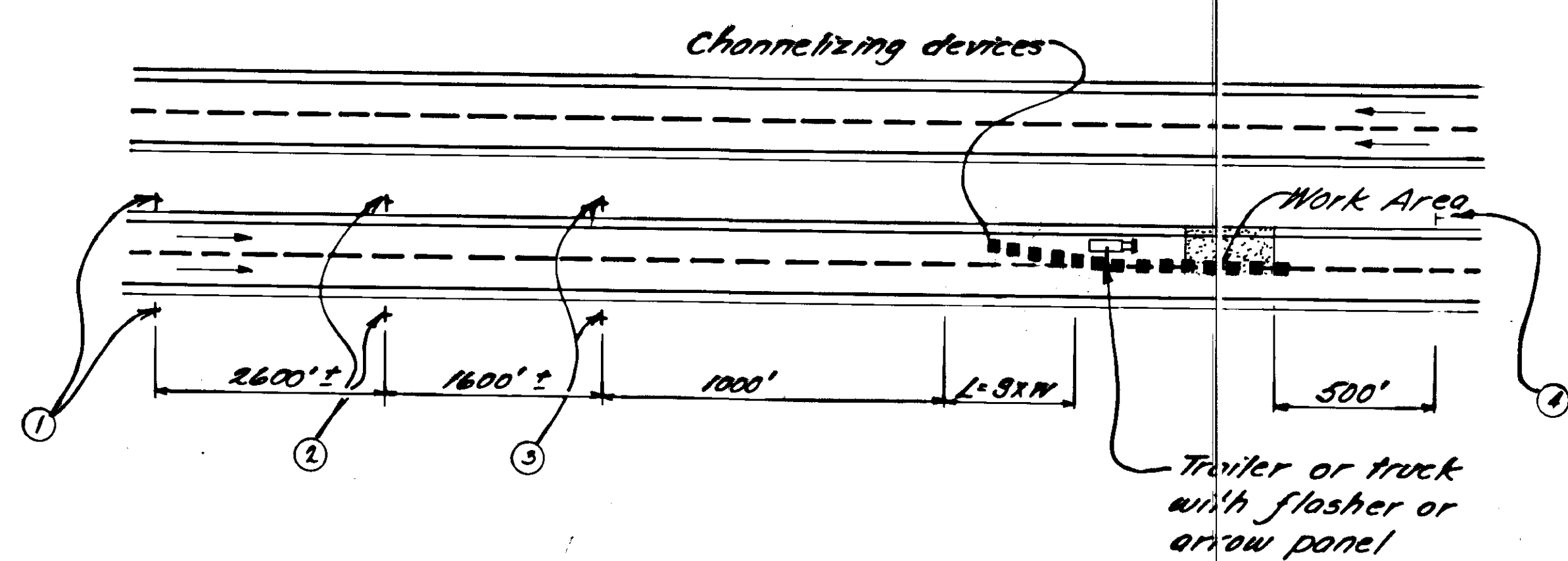
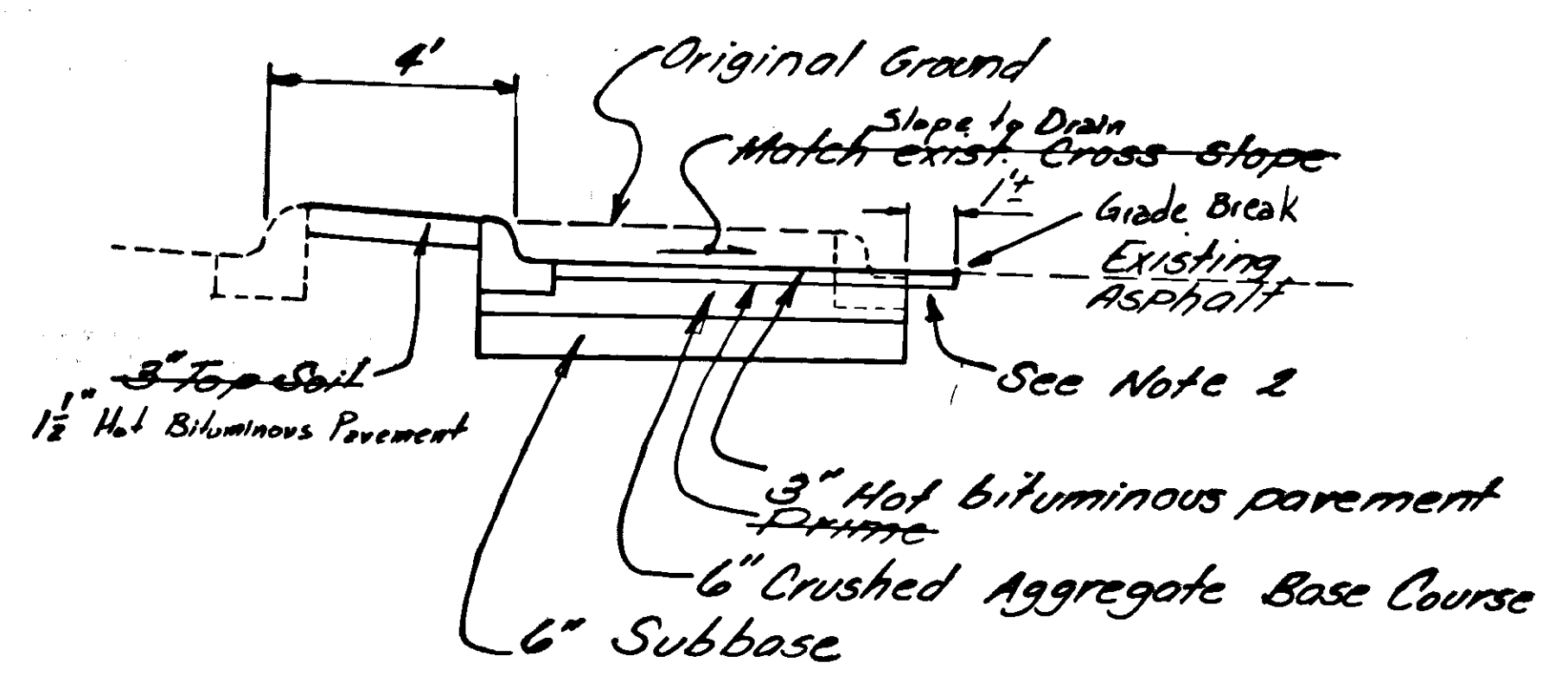
HIGHLAND DRIVE INTERSECTION DETAIL



- NOTES:
1. FOR THE MEDIAN WIDTH, MAINTAIN 4" FACE OF CURB TO FACE OF CURB.
 2. SAW CUT EXISTING PAVEMENT ONE FOOT BACK OVER UNDISTURBED MATERIAL.
 3. 8" WHITE STRIPE SHALL BE OFFSET 10" FROM FACE OF NEW CURB.
 4. STATIONING IS "AS-BUILT"
 5. MEDIAN TO BE SEEDED, ITEM 618C33

ITEM 674(C) RECONSTRUCT TURN LANE

ESTIMATE OF QUANTITIES		
ITEM	QUANTITY	ESTIMATE FACTORS
UNCLASSIFIED EXCAVATION	139 C.Y.	
REMOVAL OF CURB AND GUTTER	313 L.F.	
SUBBASE, GRADING "A"	109 TONS	
CRUSHED AGGREGATE BASE	103 TONS	1.96 TONS/C.Y.
ASPHALT CONCRETE, TYPE II	72 TONS	114 LBS./Y.D. ² /INCH DEPTH
AC-5	4.3 TONS	6% OF ABOVE
TACK COAT	AS REQ'D.	
PRIME COAT	.3 TONS	25 GAL./Y.D. ² - 253 GAL./TON
CURB AND GUTTER, TYPE I	313 L.F.	
PAINTED TRAFFIC MARKING	276 L.F.	
TOP SOIL	+1 MSF	



SECTION A-A

TRAFFIC CONTROL PLAN
FOR HIGHLAND DRIVE INTERSECTION

NOTES

(1) Taper Formula:

$$L = \frac{WS^2}{60}$$
 where:
 L = minimum length of taper
 S = numerical value of posted speed limit.
 W = width of offset

(2) maximum spacing between channelizing devices in a taper should be approx. equal in feet to the speed limit.

No.	SIZE	MULTIPLIER DESIGN	SIGN WORDING
①	48" x 48"	W20-1	ROAD CONSTRUCTION 1 MILE
②	48" x 48"	W20-5	LEFT LANE CLOSED 1/2 MILE
③	48" x 48"	W4-2	
④	60" x 24"	G20-2	END CONSTRUCTION

