

KEY MAP

STATE OF ALASKA
DEPARTMENT OF TRANSPORTATION
&
PUBLIC FACILITIES

PLAN AND PROFILE
PROPOSED HIGHWAY PROJECT
**N. DOUGLAS HWY.
ILLUMINATION E30082**

HES-M-0959(13)

**GLACIER SPUR
WARNING BEACON
E30092**

HES-M-0966(16)

**EGAN EXPRESSWAY
ILLUMINATION E30102**

HES-093-2(17)

**SITKA
SAWMILL CREEK ROAD
ILLUMINATION E30122**

HES-RS-M-0933(12)

STATE	PROJECT	SHEET NO.	TOTAL SHEETS
ALASKA		1	12

SHEET NO.	INDEX
1	TITLE SHEET
2	LOCATION MAPS
3	ESTIMATE OF QUANTITIES
4	N. DOUGLAS HWY.
5	GLACIER SPUR WARNING BEACON
6	MEDIAN WALL
7-8	VANDERBILT HILL INTERSECTION
9	SUNNY DRIVE INTERSECTION
10	OLD DAIRY ROAD INTERSECTION
11	MENDENHALL LOOP RD. INTERSECTION
12	SITKA-SAWMILL CREEK ROAD

THE FOLLOWING STANDARD DRAWINGS SHALL APPLY TO THIS PROJECT : A-1, C-03.01, L-03.00, L-10.00, L-14.00, L-20.00, L-23.00, L-30.00, S-05.00, S-30.01

"AS BUILT" PLANS
CONTRACTOR: NORTHERN CONSTRUCTION CO., INC.
PROJECT ENGINEER: S. KREUZENSTEIN
BEGIN DATE: JULY 22, 1985
COMPLETION DATE: DECEMBER 19, 1985

STATE OF ALASKA
DEPARTMENT OF TRANSPORTATION
&
PUBLIC FACILITIES

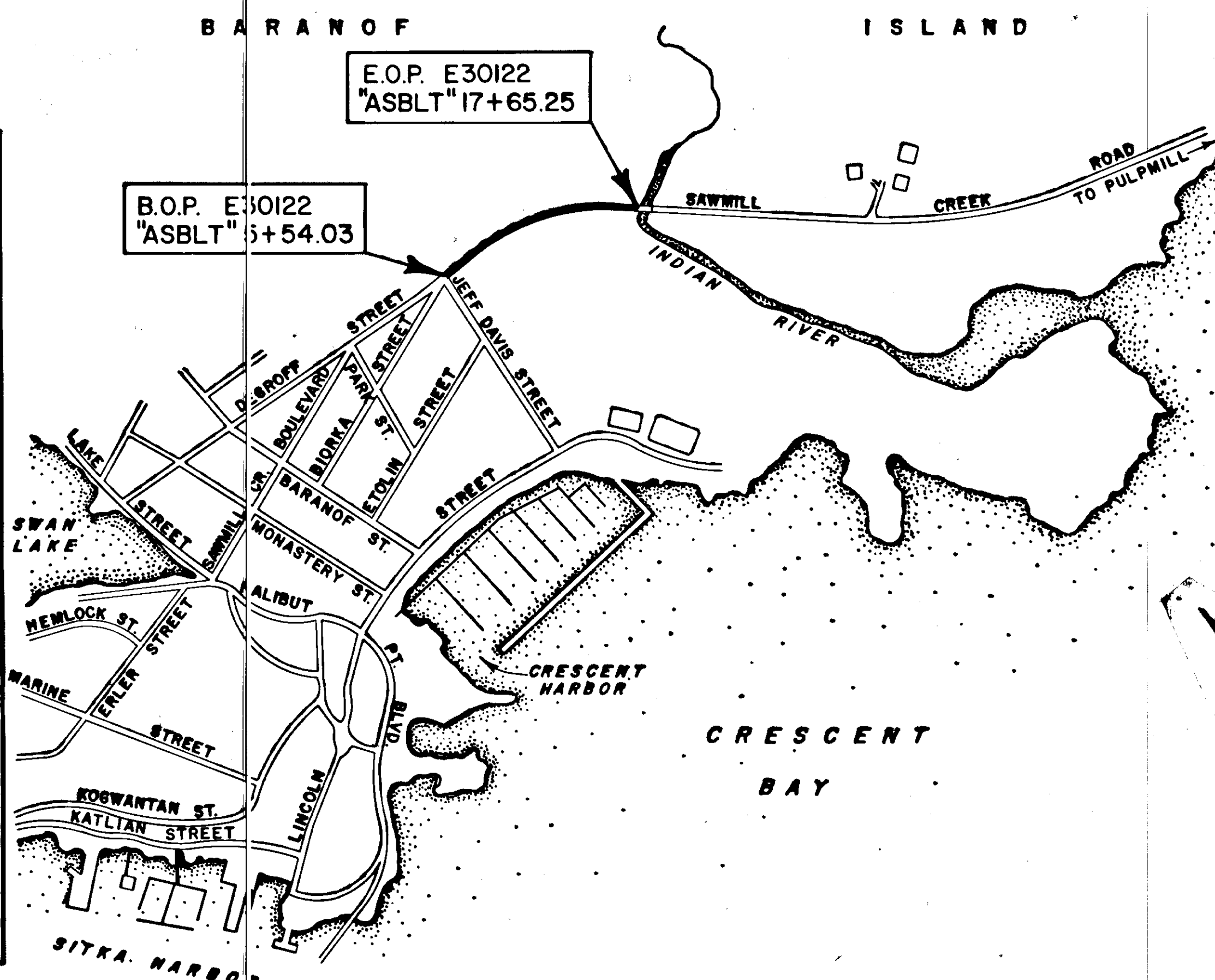
APPROVED
Wallace K. Williams Date 4/29/85
SOUTHEAST REGION DESIGN ENGINEER

STATE OF ALASKA
DEPARTMENT OF TRANSPORTATION
&
PUBLIC FACILITIES

APPROVED
R. Dickmeier Date 4/30/85
DIRECTOR, S.E. REGION DESIGN / CONSTRUCTION

STATE	PROJECT DESIGNATION	YEAR	SHEET NO.	TOTAL SHEETS
ALASKA	HES-M-0959(13) HES-M-0966(16) HES-M-093-2(17) HES-RS-M-0933(12)	1985	2	12

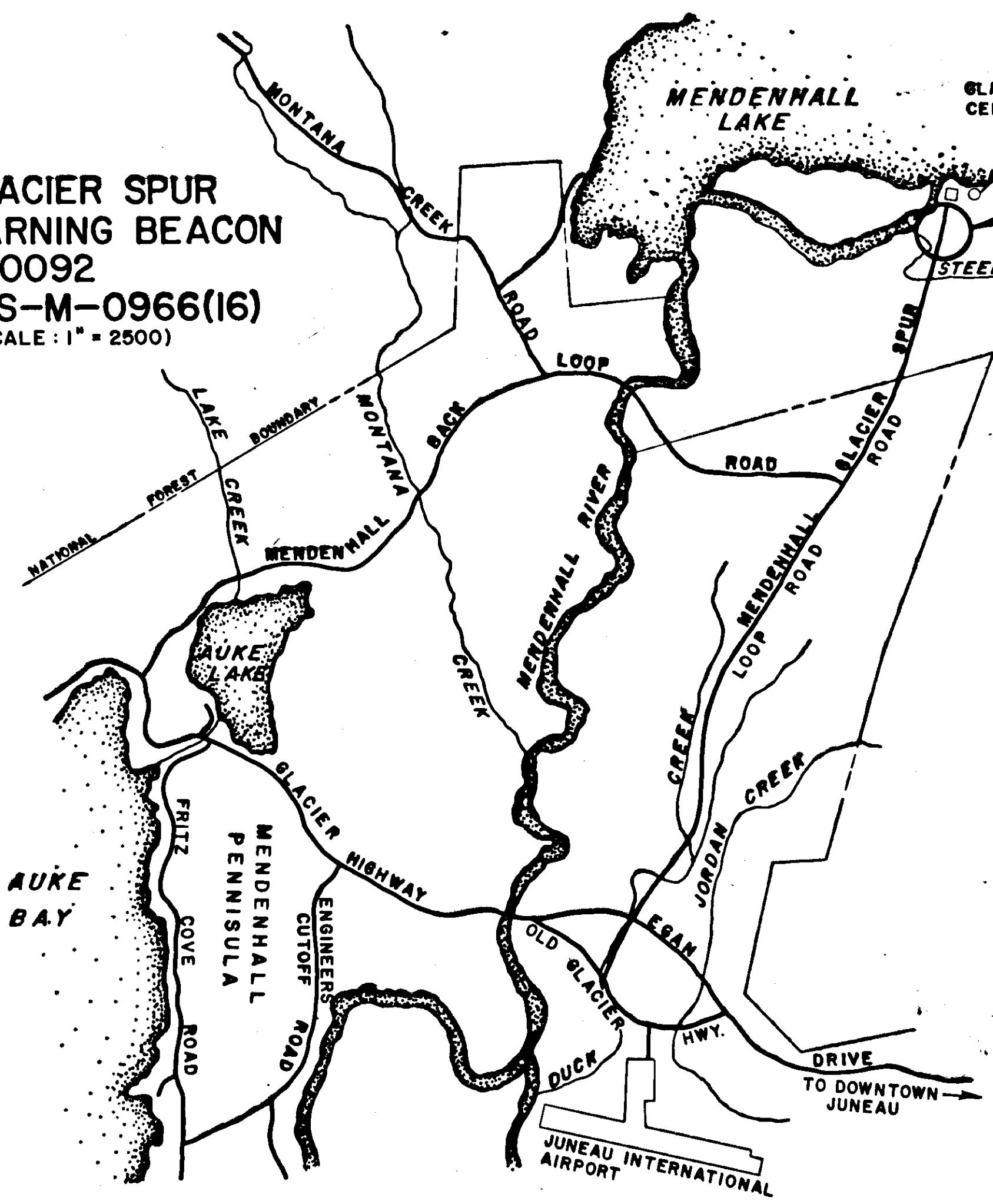
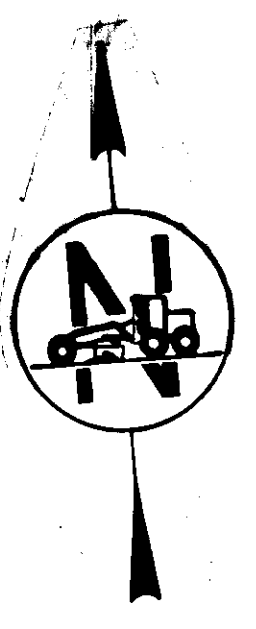
SITKA-SAWMILL CREEK ROAD ILLUMINATION
E30122 HES-RS-M-0933(12)
 (SCALE: 1" = 750')



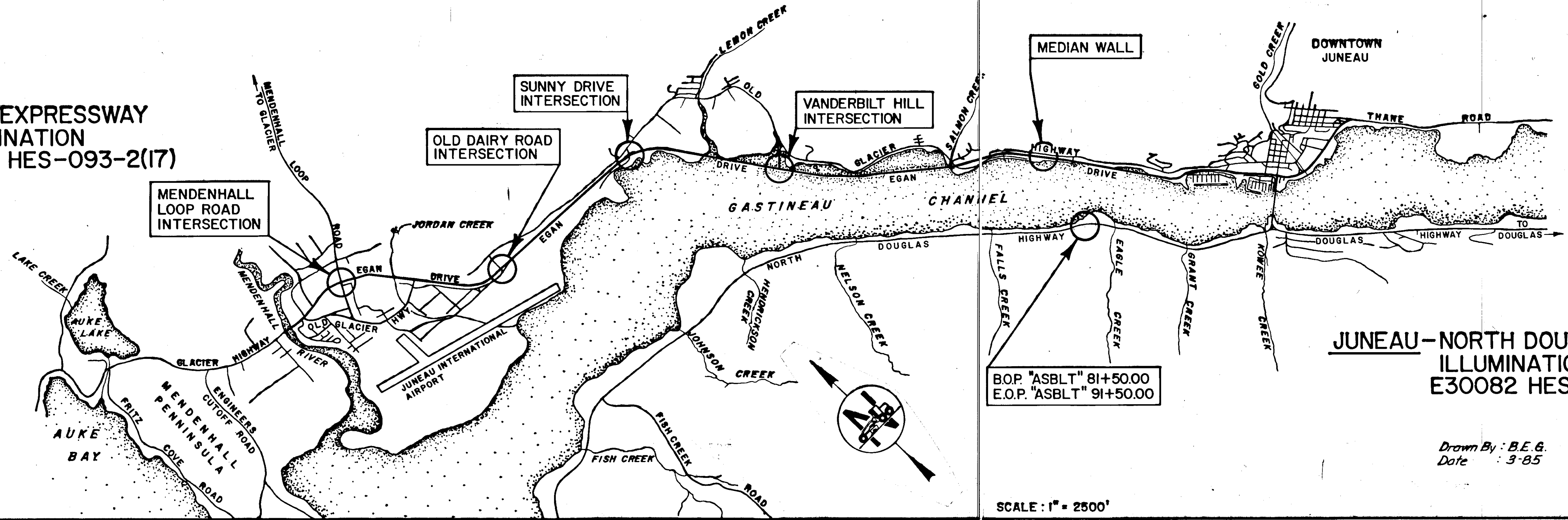
GENERAL NOTES

1. Locations given are approximate only and are subject to minor field revisions as approved by the Engineer.
2. Conduit and cable routing, as shown on the plans, are schematic only and may be modified in the field as necessary to complete the Illumination system. Any modifications shall be approved by the Engineer.
3. All mounting heights equal 35 feet above roadway.
4. Footings for luminaire poles shall be cast-in-drilled-holes, Type II. PRECAST (E.W.O. NO.11)
5. All luminaire poles, not protected by guardrail, shall be mounted on slip bases, Standard Drawing L-10.00.
6. All J-boxes shall be Type I as per Standard Drawing L-23.00. All J-box covers shall be marked "LIGHTING".
7. All new wiring shall be in conduit. All conduit shall be 2" R.W.C.
8. See Standard Drawing L-20.00 for distribution center details.
9. See Standard Drawing L-20.00 for control cabinet wiring schematic.
10. Photo cells shall be installed on each luminaire - one on load centers.
11. Electroliner foundations shall be buried so that no more than 8" on either side is exposed above ground.
12. Voltage for Juneau Egan Expressway is 480V.
Voltage for Glacier Spur Warning Beacon is 110V.
Voltage for Sitka Sawmill Creek & No. Douglas is 240V.
13. All existing signs to remain.

JUNEAU-GLACIER SPUR WARNING BEACON
E30092
HES-M-0966(16)
 (SCALE: 1" = 2500)



JUNEAU-EGAN EXPRESSWAY ILLUMINATION
E30102 HES-093-2(17)



JUNEAU-NORTH DOUGLAS ILLUMINATION
E30082 HES-M-0959(13)

B.O.P. "ASBLT" 81+50.00
 E.O.P. "ASBLT" 91+50.00

Drawn By: B.E.G.
 Date: 3-85



SCALE: 1" = 2500'

STATE	PROJECT DESIGNATION	YEAR	SHEET NO.	TOTAL SHEETS
ALASKA	HES-M-0959(13) HES-M-0966(16) HES-093-2(17) HES-RS-M-0933(12)	1985	3	12

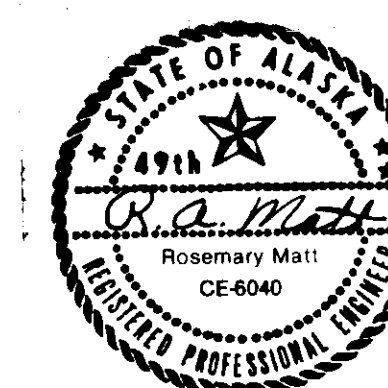
TABLE OF QUANTITIES

ITEM	N. DOUGLAS HWY. ILLUMINATION	GLACIER SPUR WARNING BEACON	EGAN EXPRESSWAY ILLUMINATION	SAWMILL CREEK ROAD ILLUMINATION
35' TIMBER POLES CLASS 4	1			1
6' MAST ARMS	4		20	x 3
10' MAST ARMS				3
15' MAST ARMS			29	
35' POLES FOR SINGLE MAST ARMS	4		29	6
30' POLES FOR DOUBLE MAST ARMS			10	
J. BOXES	1	2	6	
20 AMP BREAKERS	1	1	5	1
SLIP BASES	4	2	18	6
STANDARD BASES			21	
250 WATT LUMINAIRES	4		47	6
400 WATT LUMINAIRES			2	
REMOVE & RELOCATE ELECTROLIER & BASE			1	
FLASHING BEACON		2		
SIGNS (NEW)	42 S.F.	16 S.F.		30 S.F.

ESTIMATE OF BID QUANTITIES

NO.	ITEM	UNIT	QUANTITY
109 (2)	DBE & WBE Adjustment	C.S.	All Required
110 (2)	Mobilization & Demobilization	L.S.	All Required
114 (1)	Construction Surveying	L.S.	All Required
115 (1)	Traffic Maintenance	L.S.	All Required
615 (1)	Standard Sign	Sq. Ft.	16
615 (6)	Chevron Delineators	Sq. Ft.	72
660 (2)	Flashing Beacon System Complete	L.S.	All Required
660 (8)	Highway Lighting System Complete Juneau North Douglas Illumination	L.S.	All Required
660 (10)	Highway Lighting System Complete Juneau Egan Expressway Illumination	L.S.	All Required
660 (12)	Highway Lighting System Complete Sifka Sawmill Creek Road Illumination	L.S.	All Required

Drawn By: T.S.
Date: 4-85

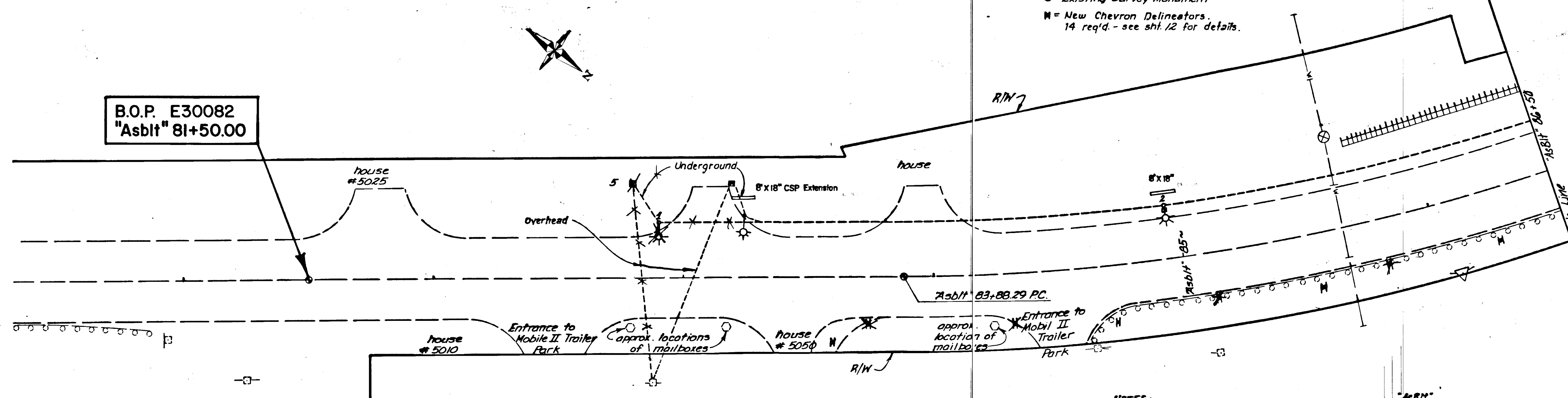


**NORTH DOUGLAS
ILLUMINATION**

STATE	PROJECT DESIGNATION	YEAR	SHEET NO.	TOTAL SHEETS
ALASKA	HES-M-0959(13)	1985	4	12

⊙ = Existing Survey Monument
 M = New Chevron Delineators.
 14 req'd. - see sh't. 12 for details.

B.O.P. E30082
 "Asbit" 81+50.00

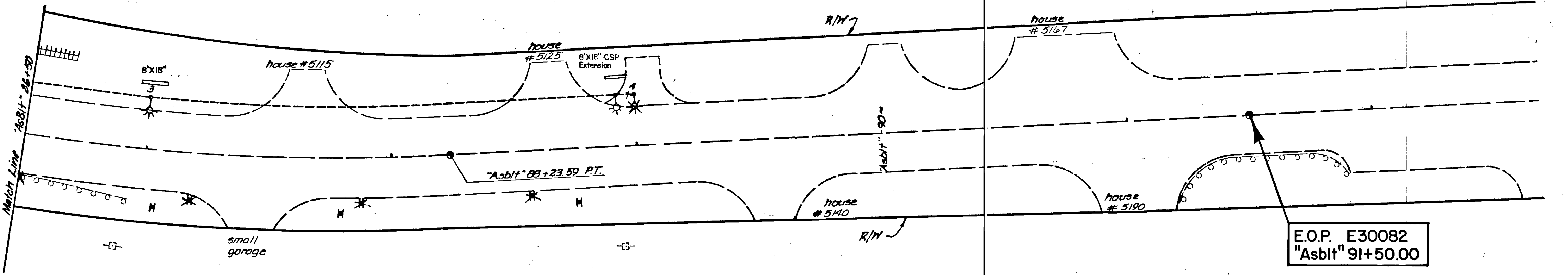


ILLUMINATION TABLE					
	NO.	STATION	OFFSET	ITEM	REMARKS
83+19 →	1	82+90	20' Lt.	Pole and Base	250 H.P.S. 6' Mast Arm Length, slip base
	2	84+95	20' Lt.	Pole and Base	250 H.P.S. 6' Mast Arm Length, slip base
	3	87+00	20' Lt.	Pole and Base	250 H.P.S. 6' Mast Arm Length, slip base
88+94 →	4	89+00	20' Lt.	Pole and Base	250 H.P.S. 6' Mast Arm Length, slip base
83+17 →	5	88+80	36' Lt.	Load Center	Mounted on 35' timber pole (Total Length)
		84+95	1' Lt.	J-Box	(Class A)

- NOTES:
- 1) Traffic Control Plan shall be as shown on Standard Drawing C-03.01.
 - 2) Timber pole embedment is 10 % of total length plus 2'.
 - 3) Conduit placed under paved driveway approaches shall be installed as detailed on sheet 5.

"Asbit"

- A = 30°28'15"
- D = 17°00' Lt.
- T = 222.92'
- L = 135.30'
- R = 818.51'

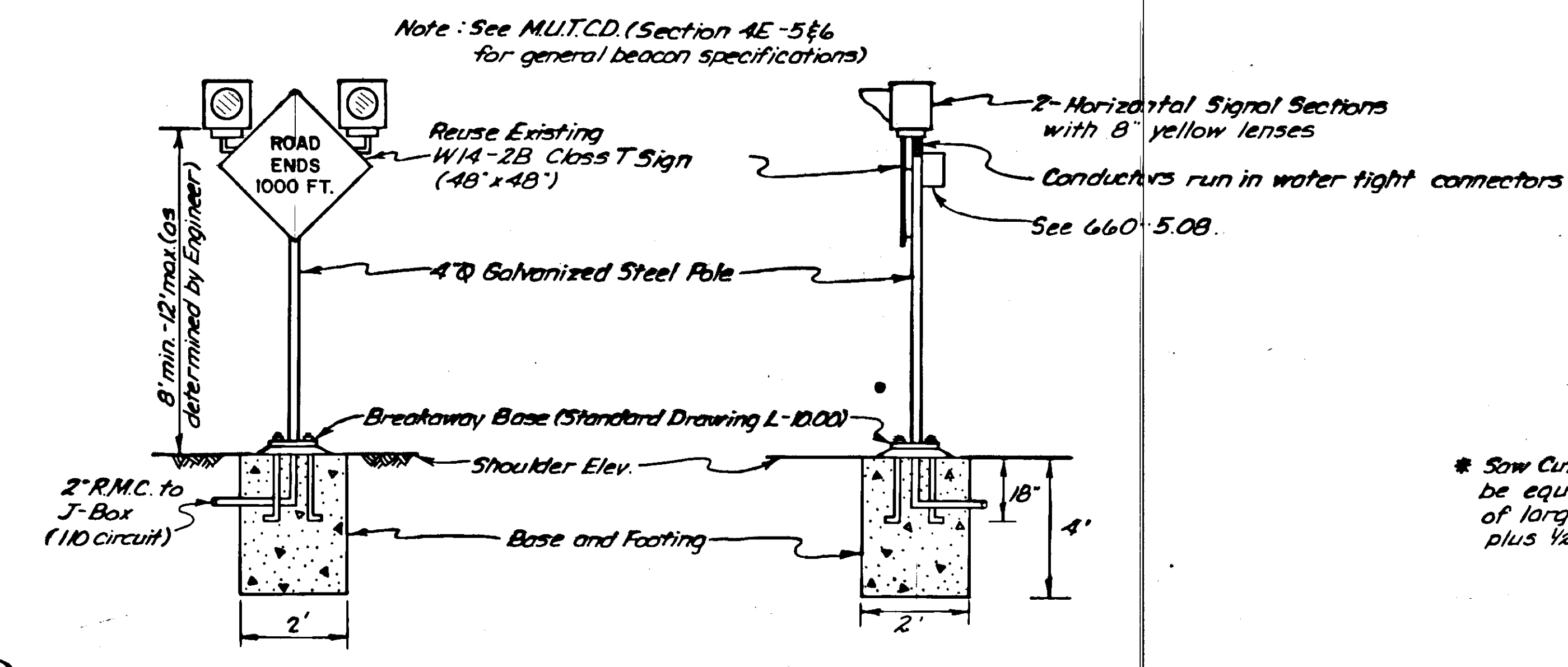
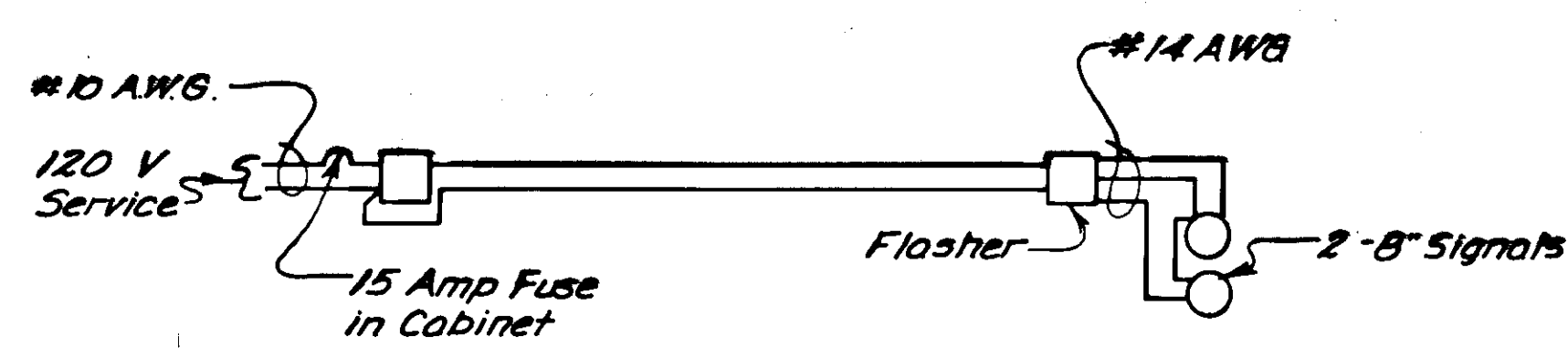


E.O.P. E30082
 "Asbit" 91+50.00

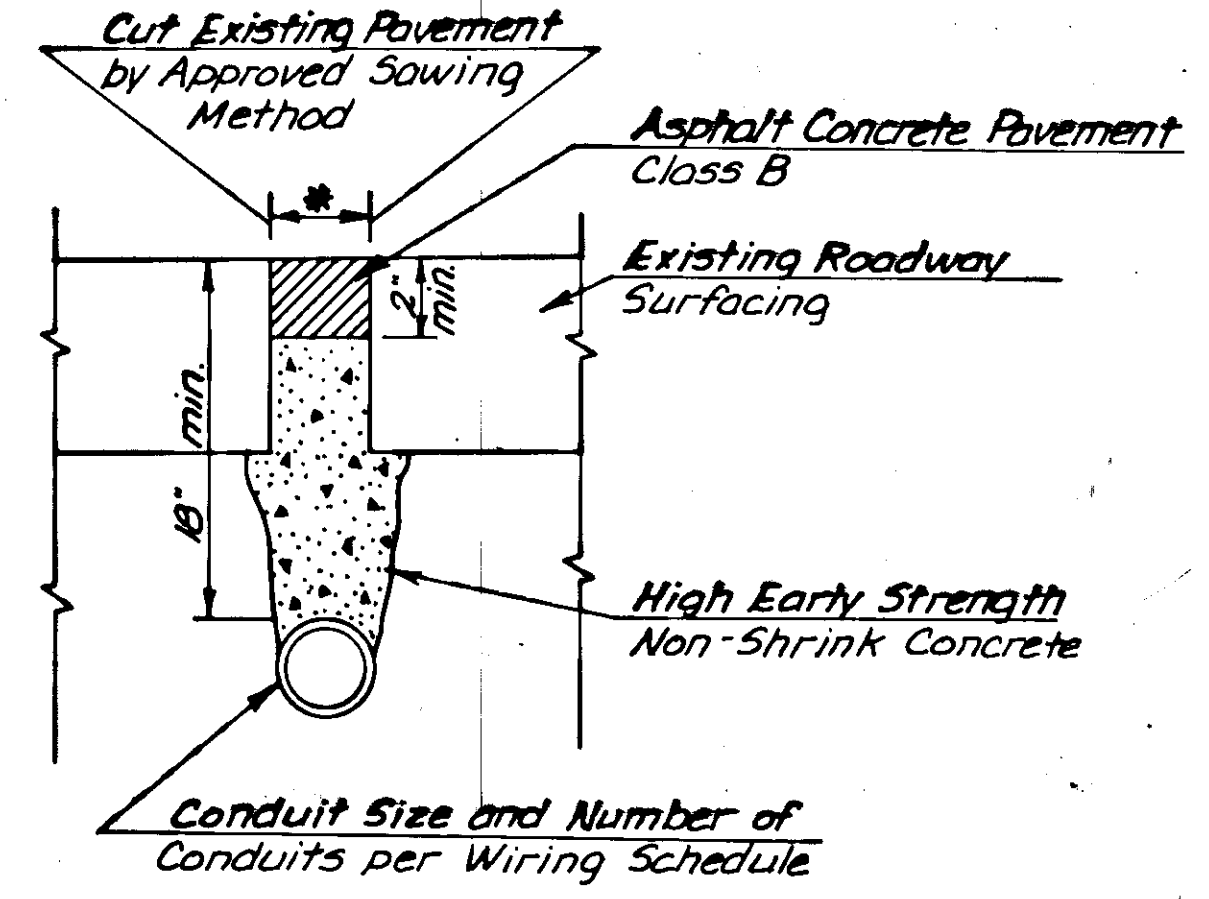


Drawn By: BEG + CH
 Date: 3-85

GLACIER SPUR WARNING BEACON

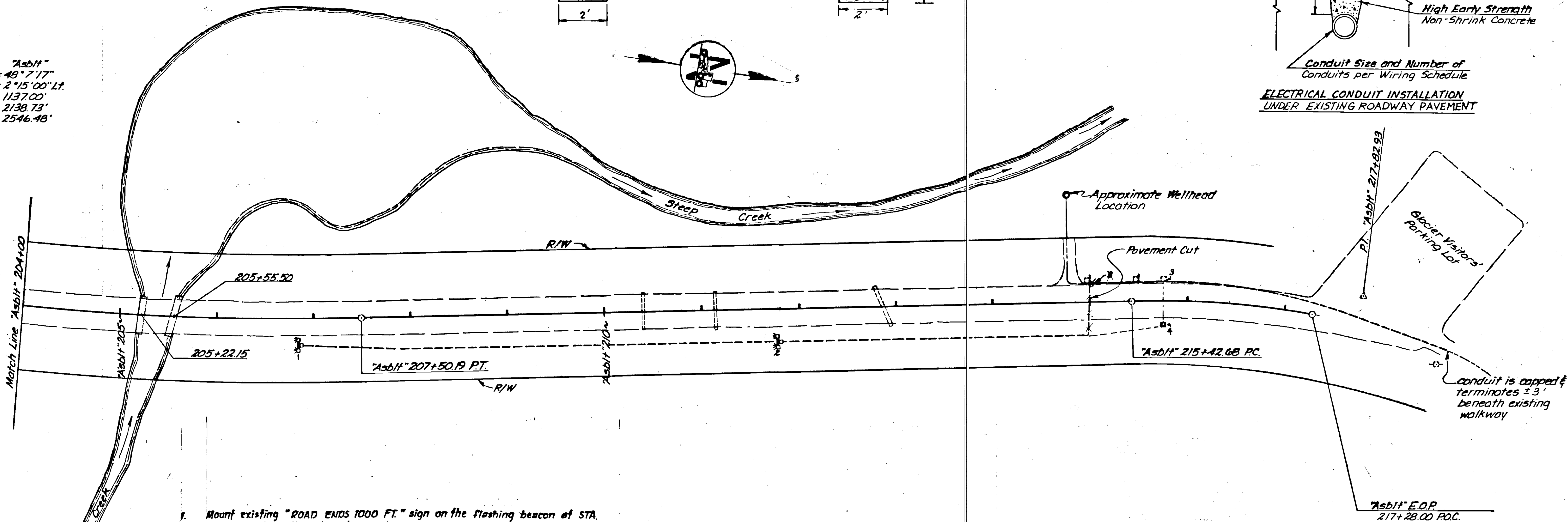


* Saw Cut Width shall be equal to diameter of largest conduit plus 1/2".



ELECTRICAL CONDUIT INSTALLATION UNDER EXISTING ROADWAY PAVEMENT

"Asbitt"
 $\Delta = 48^\circ 7' 17''$
 $D = 2^\circ 15' 00''$ Lt.
 $T = 1137.00'$
 $L = 2138.73'$
 $R = 2546.48'$



- Mount existing "ROAD ENDS 1000 FT." sign on the flashing beacon at STA. 206+80. All existing signs to remain.
- Conductors shall be No. 10 A.W.G. for the flashing beacon circuit.
- New conduit through the Glacier Visitors Parking Lot shall be placed within the limits of the previously patched pavement. Pavement shall be saw cut. This is the approximate location of an existing 3" water conduit and a 2" electrical conduit. The water conduit depth, of approximately 6', and the electrical conduit depth, of approximately 2', shall be field verified by the Contractor before digging in the area.
- Payment for cutting, backfilling, patching the pavement, and repairing the curb and gutter shall be considered incidental to the flashing beacons, Item 660(2).
- Some rock excavation may be needed to place the conduit at Sta. 213~ to Sta. 215~. This will also be considered incidental to the flashing beacons, Item 660(2).
- Flashers shall alternate on the Warning Beacons.
- Traffic Control Plan shall be as shown on Standard Drawing C-03.01

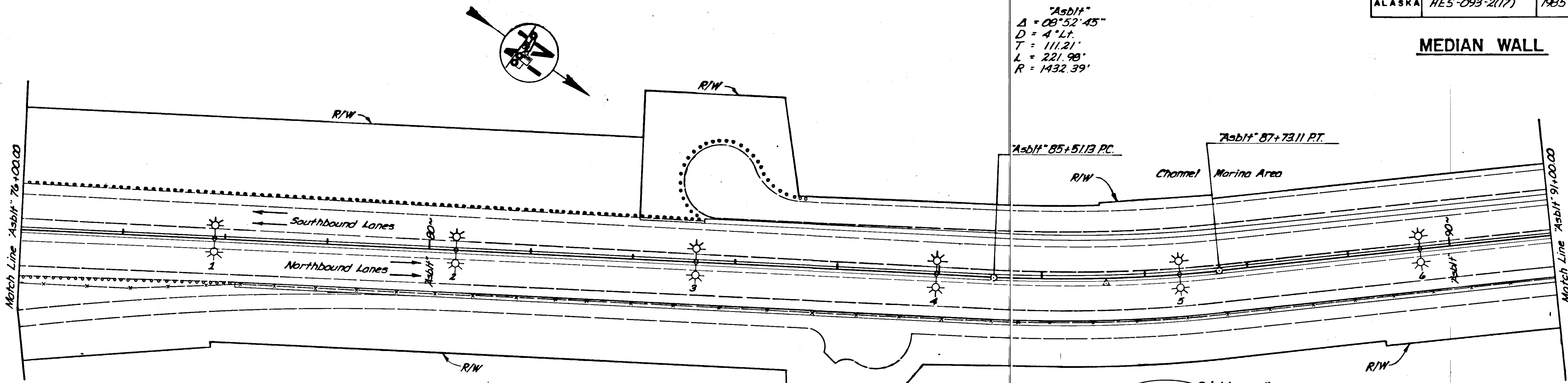
ILLUMINATION TABLE					
NO.	STATION	OFFSET	ITEM	LUMINAIRE WATTAGE	REMARKS
1	206+80	21' RT. 24	Flashing Beacon	-	Horizontal Beacon with existing "ROAD ENDS 1000 Ft." sign. - MUTCD No. W14-2B
2	211+80	21' RT. 24	Flashing Beacon	-	Horizontal Beacon with new "ROAD ENDS 500 Ft." sign - MUTCD No. W14-2B special Class T.
3	215+80 75	21' LT. 23	J-BOX	-	Cover to be marked "Lighting".
4	215+75	20' RT.	J-BOX	-	

Drawn By: B.E.G.
 Date: 3-85



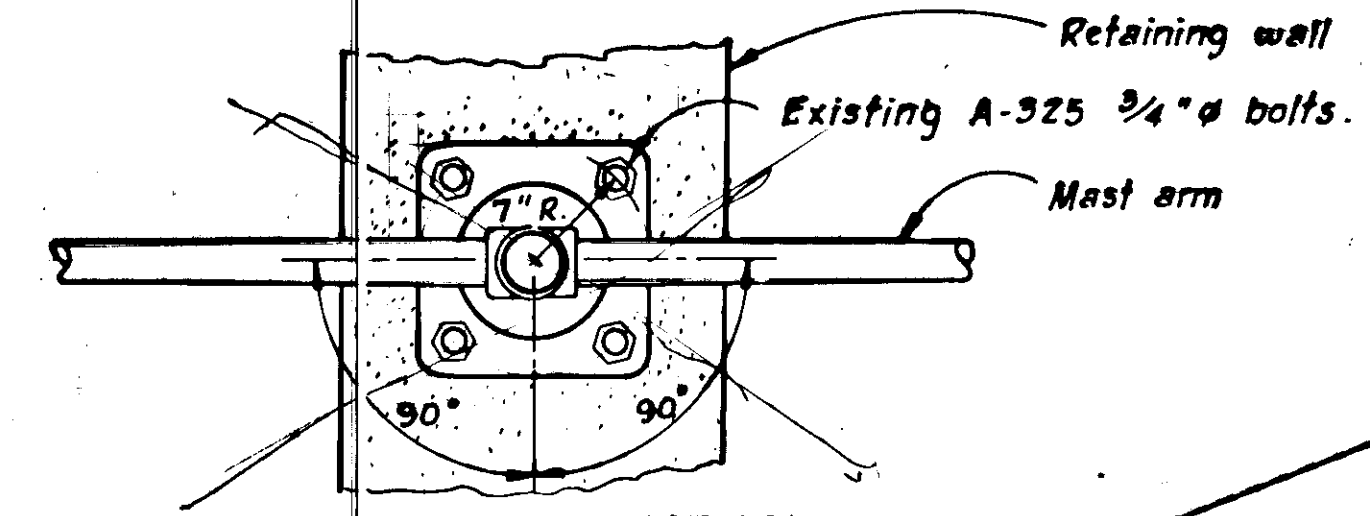
MEDIAN WALL

"Asbit"
 $\Delta = 08^{\circ}52'45''$
 $D = 4^{\circ}Lt.$
 $T = 111.21'$
 $L = 221.98'$
 $R = 1432.39'$



NOTES

- 1) Removal and relocation of the electrolier (No. 11) is incidental to Pay item 660 (10).
- 2) Traffic Control Plan shall be as shown on sheet 11.
- 3) No lane closures between 7 a.m. to 9 a.m. and 4 p.m. to 6 p.m., Monday through Friday.
- 4) The existing underground conduit shall be cleaned with a mandrel or cylindrical wire brush and blown out with compressed air from the power source out to and in the wall.



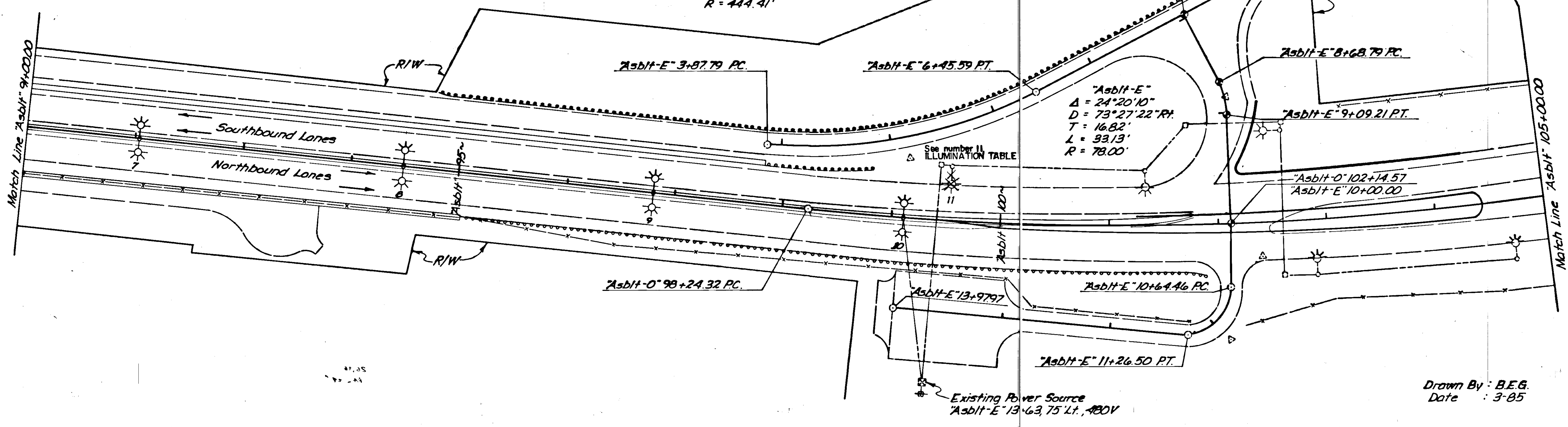
MAST ARM ORIENTATION AND BOLT PATTERN

N.T.S.

"Asbit-O"
 $\Delta = 16^{\circ}39'11''$
 $D = 2^{\circ}Lt.$
 $T = 418.86'$
 $L = 831.32'$
 $R = 2864.79'$

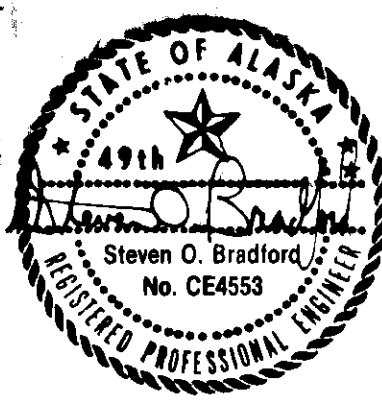
"Asbit-E"
 $\Delta = 33^{\circ}14'13''$
 $D = 12^{\circ}53'33''Lt.$
 $T = 132.64'$
 $L = 257.80'$
 $R = 444.41'$

ILLUMINATION TABLE					
NO.	STATION	OFFSET	ITEM	LUMINAIRE WATTAGE	REMARKS
1	77+90	0.625 Lt.	Pole w/2 Mast Arms	250 H.P.S.	2-6' Mast Arm Lengths
2	80+26	0.625 Lt.	Pole w/2 Mast Arms	250 H.P.S.	2-6' Mast Arm Lengths
3	82+62	0.625 Lt.	Pole w/2 Mast Arms	250 H.P.S.	2-6' Mast Arm Lengths
4	84+98	0.625 Lt.	Pole w/2 Mast Arms	250 H.P.S.	2-6' Mast Arm Lengths
5	87+34	0.625 Lt.	Pole w/2 Mast Arms	250 H.P.S.	2-6' Mast Arm Lengths
6	89+70	0.625 Lt.	Pole w/2 Mast Arms	250 H.P.S.	2-6' Mast Arm Lengths
7	92+06	0.625 Lt.	Pole w/2 Mast Arms	250 H.P.S.	2-6' Mast Arm Lengths
8	94+42	0.625 Lt.	Pole w/2 Mast Arms	250 H.P.S.	2-6' Mast Arm Lengths
9	96+78	0.625 Lt.	Pole w/2 Mast Arms	250 H.P.S.	2-6' Mast Arm Lengths
10	99+14	0.625 Lt.	Pole w/2 Mast Arm	250 H.P.S.	2-6' Mast Arm Lengths
11	99+50	50' Lt.	Pole w/1 Mast Arm	250 H.P.S.	Remove & Salvage Luminaire. Reuse at Vanderbilt Hill Intersection.



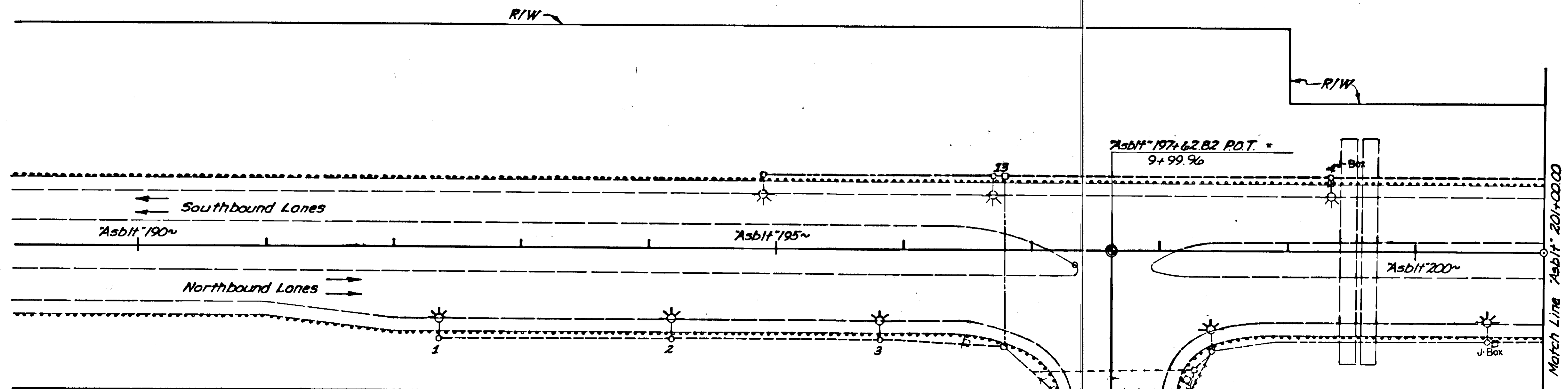
⊙ = Existing Survey Monument

Drawn By: B.E.G.
 Date: 3-85

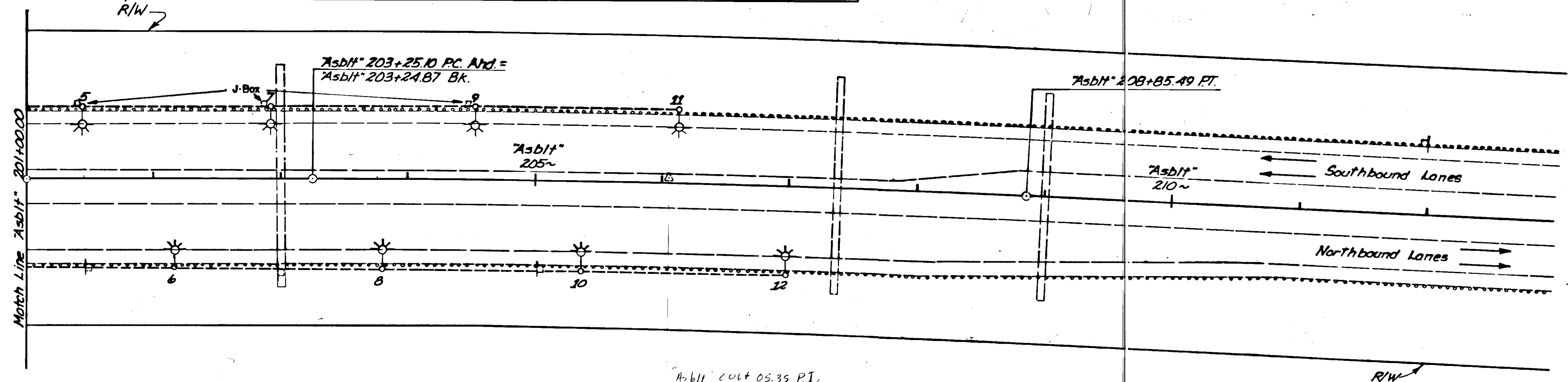


VANDERBILT HILL INTERSECTION

STATE	PROJECT DESIGNATION	YEAR	SHEET NO.	TOTAL SHEETS
ALASKA	HES-093-2(17)	1985	7	12

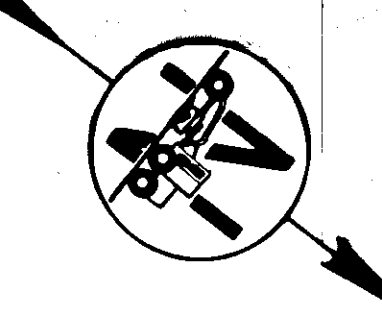


NO.	STATION	OFFSET	ITEM	LUMINAIRE WATTAGE	REMARKS	
1	192+60	70' Rt.	Pole and Base	250 H.P.S.	15' Mast Arm Length, standard base	SLIP BASE
2	194+20	70' Rt.	Pole and Base	250 H.P.S.	15' Mast Arm Length, standard base	SLIP BASE
3	195+80	70' Rt.	Pole and Base	400 H.P.S.	15' Mast Arm Length, standard base	SLIP BASE
4	199+34	60' Lt.	Pole and Base	400 H.P.S.	15' Mast Arm Length, standard base	
5	201+45	60' Lt.	Pole and Base	250 H.P.S.	15' Mast Arm Length, standard base	
6	202+15	70' Rt.	Pole and Base	250 H.P.S.	15' Mast Arm Length, standard base	SLIP BASE
7	202+95	60' Lt.	Pole and Base	250 H.P.S.	15' Mast Arm Length, standard base	
8	203+75	70' Rt.	Pole and Base	250 H.P.S.	15' Mast Arm Length, standard base	SLIP BASE
9	204+55	60' Lt.	Pole and Base	250 H.P.S.	15' Mast Arm Length, Standard base	
10	205+35	70' Rt.	Pole and Base	250 H.P.S.	15' Mast Arm Length, standard base	SLIP BASE
11	206+15	60' Lt.	Pole and Base	250 H.P.S.	15' Mast Arm Length, standard base	
12	206+95	70' Rt.	Pole and Base	250 H.P.S.	15' Mast Arm Length, standard base	SLIP BASE
13	196+75	60' Lt.	J-Box	N/A	Replace existing J-Box.	



"Asbit"
 $\Delta = 2^{\circ}48'29.2"$
 $D = 0^{\circ}30'04" Rt.$
 $T = 280.25'$
 $L = 560.39'$
 $R = 11,434.01'$

⊙ = Existing Survey Monument



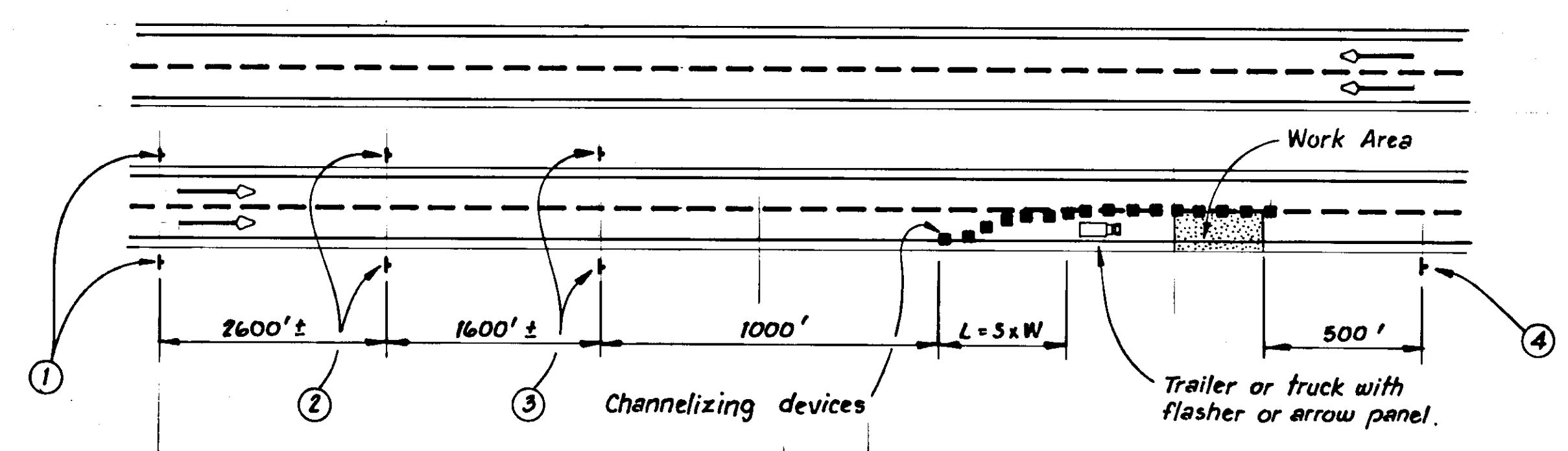
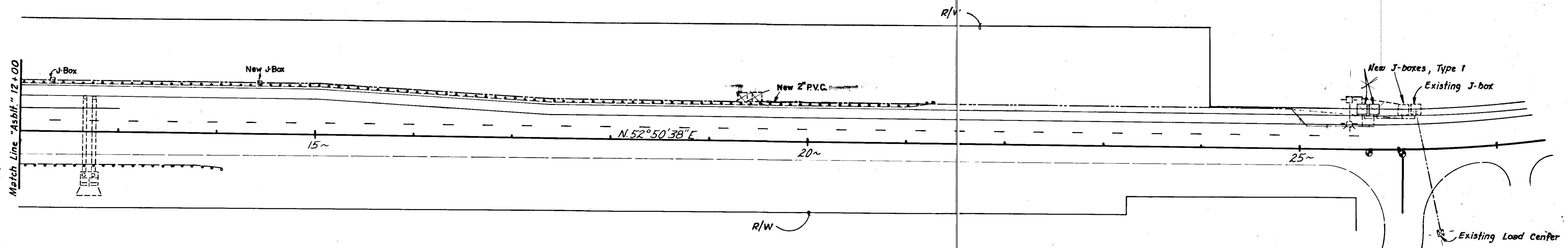
NOTES

- 1) Traffic Control Plan shall be as shown on Sheet 8.
- 2) No lane closures between 7am to 9am and 4pm to 6pm, Monday through Friday.
- 3) Two Lane traffic shall be maintained from 7 A.M. to 9 A.M. southbound and 4 P.M. to 6 P.M. northbound on Egan Expressway Monday thru Friday.

Drawn By : B.E.G.
 Date : 3-85



VANDERBILT HILL INTERSECTION



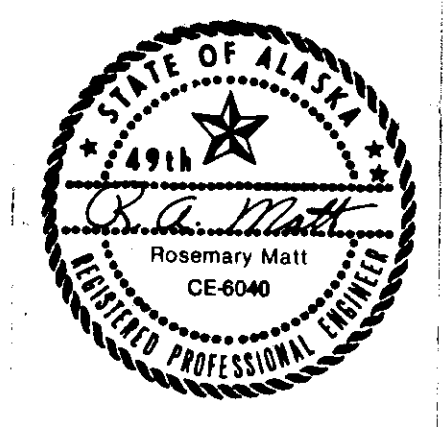
TRAFFIC CONTROL PLAN FOR EGAN DRIVE

NO.	SIZE	MUTCD DESIG.	SIGN WORDING
①	48" x 48"	CW 20-1C	ROAD CONSTRUCTION 1 MILE
②	48" x 48"	W 20-5	RIGHT LANE CLOSED 1/2 MILE
③	48" x 48"	W 4-2	1 1/2
④	60" x 24"	G 20-2	END CONSTRUCTION

- NOTES:**
- Taper Formula:
 $L = S \times W$ for speeds of 45 or more.
 $L = \frac{WS^2}{60}$ for speeds of 40 or less.
 Where:
 L = Minimum length of taper.
 S = Numerical value of posted speed limit prior to work or 85 percentile speed.
 W = Width of offset.
 - The maximum spacing between channelizing devices in a taper should be approximately equal in feet to the speed limit.

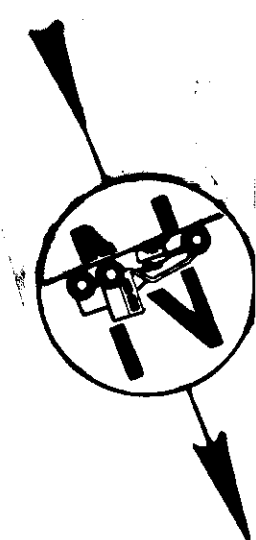
NOTE:
 Replace existing No. 6 AWG conductor with No. 4 AWG conductor from load center to existing junction box at STA. 12+30, 60' Lt. 12+30
 New 2" PVC installed from sta. 12+30 Lt. to J-Box at sta. 26+25 Lt. (E.W.O.2)

Drawn By: T.S.
 Date: 4-85



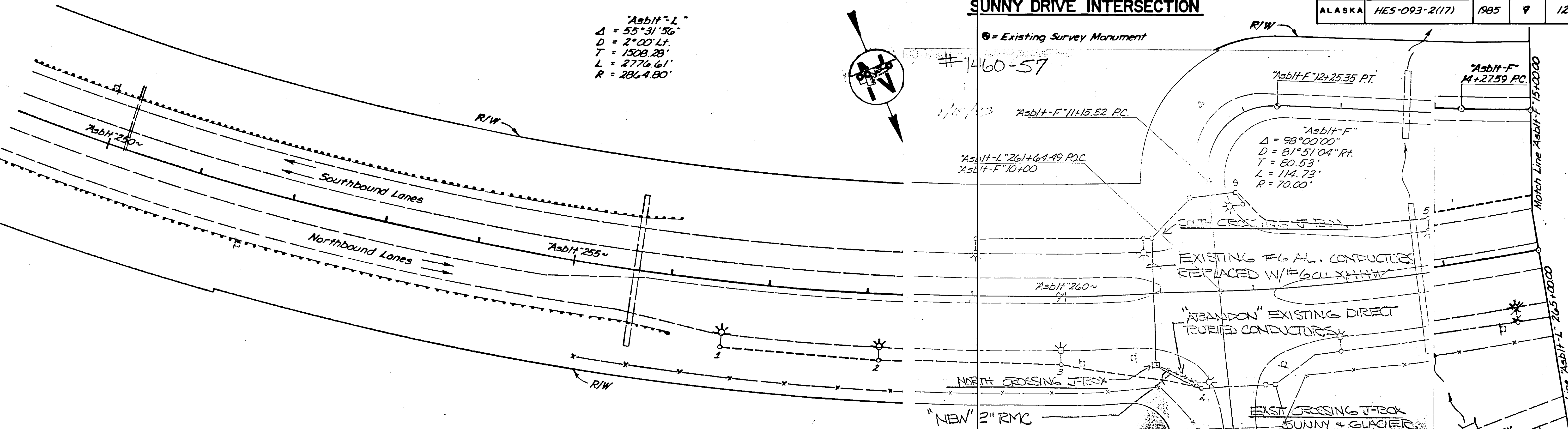
SUNNY DRIVE INTERSECTION

"Asbt-L"
 $\Delta = 55^{\circ}31'56''$
 $D = 2^{\circ}00' Lt.$
 $T = 1508.28'$
 $L = 2776.61'$
 $R = 2864.80'$



⊙ = Existing Survey Monument

1460-57

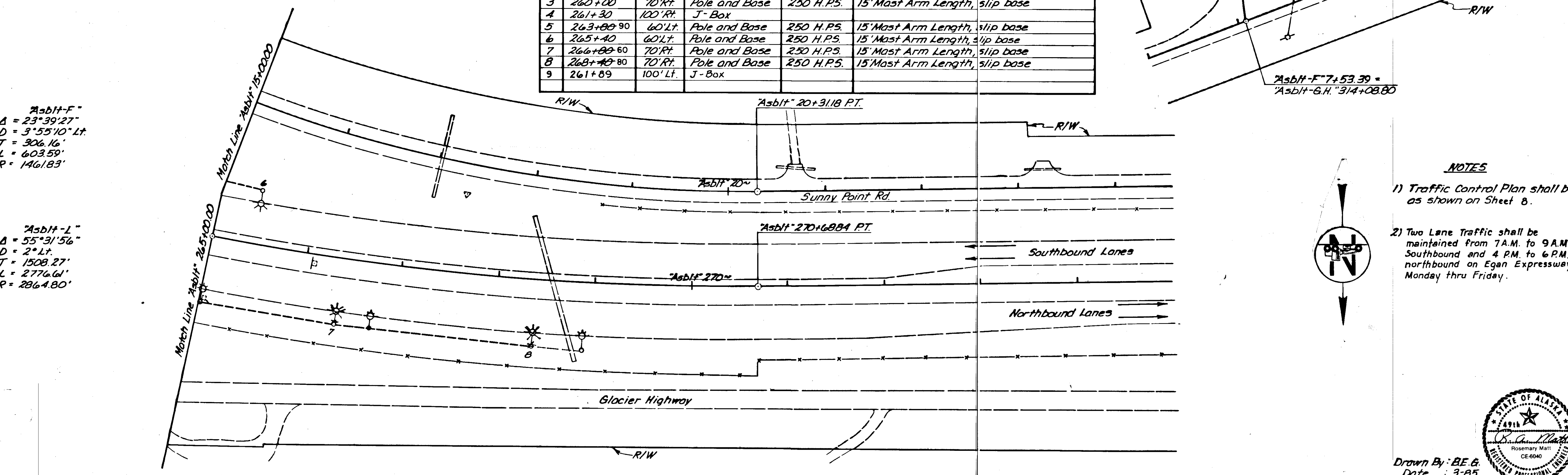


ILLUMINATION TABLE

NO.	STATION	OFFSET	ITEM	LUMINAIRE WATTAGE	REMARKS
1	256+60	70' Rt.	Pole and Base	250 H.P.S.	15' Mast Arm Length, slip base
2	258+30	70' Rt.	Pole and Base	250 H.P.S.	15' Mast Arm Length, slip base
3	260+00	70' Rt.	Pole and Base	250 H.P.S.	15' Mast Arm Length, slip base
4	261+30	100' Rt.	J-Box		
5	263+00	60' Lt.	Pole and Base	250 H.P.S.	15' Mast Arm Length, slip base
6	265+40	60' Lt.	Pole and Base	250 H.P.S.	15' Mast Arm Length, slip base
7	266+00	60' Lt.	Pole and Base	250 H.P.S.	15' Mast Arm Length, slip base
8	268+80	70' Rt.	Pole and Base	250 H.P.S.	15' Mast Arm Length, slip base
9	261+89	100' Lt.	J-Box		

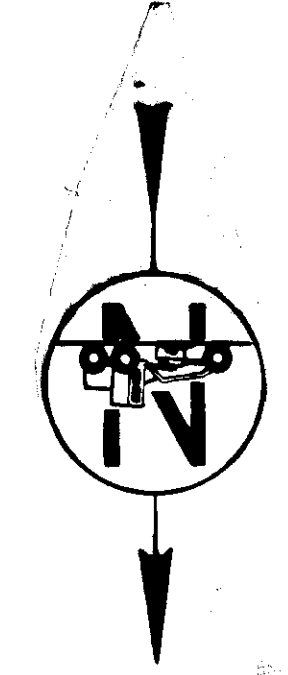
"Asbt-F"
 $\Delta = 23^{\circ}39'27''$
 $D = 3^{\circ}55'10'' Lt.$
 $T = 306.16'$
 $L = 603.59'$
 $R = 1461.83'$

"Asbt-L"
 $\Delta = 55^{\circ}31'56''$
 $D = 2^{\circ} Lt.$
 $T = 1508.27'$
 $L = 2776.61'$
 $R = 2864.80'$



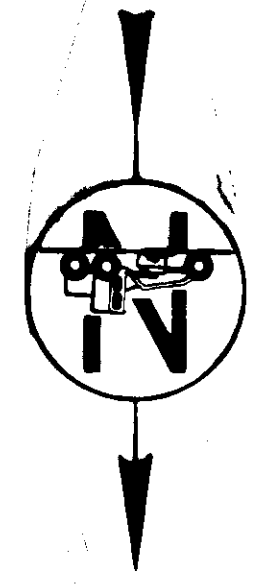
NOTES

- 1) Traffic Control Plan shall be as shown on Sheet 8.
- 2) Two Lane Traffic shall be maintained from 7 A.M. to 9 A.M. Southbound and 4 P.M. to 6 P.M. northbound on Egan Expressway Monday thru Friday.



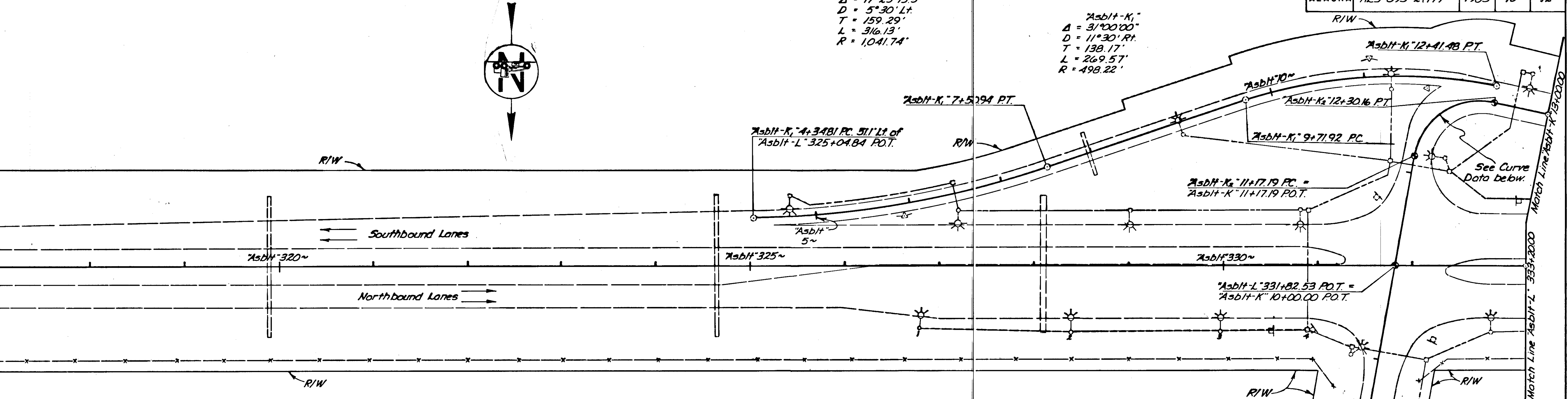
Drawn By: BE.G.
 Date: 3-85

OLD DAIRY ROAD INTERSECTION



"Asbt-K₁"
 $\Delta = 17^{\circ}23'13.3''$
 $D = 5^{\circ}30' Lt.$
 $T = 159.29'$
 $L = 316.13'$
 $R = 1,041.74'$

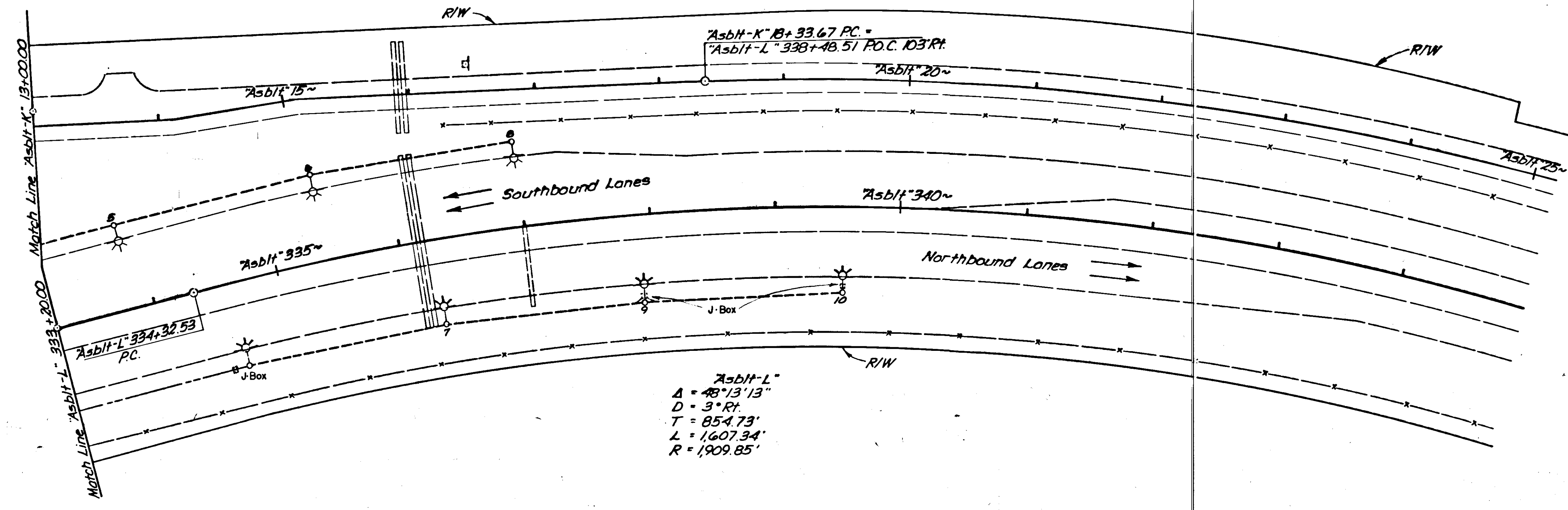
"Asbt-K₁"
 $\Delta = 31^{\circ}00'00''$
 $D = 11^{\circ}30' Rt.$
 $T = 138.17'$
 $L = 269.57'$
 $R = 498.22'$



ILLUMINATION TABLE

NO.	STATION	OFFSET	ITEM	LUMINAIRE WATTAGE	REMARKS	NO.	STATION	OFFSET	ITEM	LUMINAIRE WATTAGE	REMARKS
1	326+80	68'Rt.	Pole and Base	250 H.P.S.	15' Mast Arm Length, slip base	7	336+22	70'Rt.	Pole and Base	250 H.P.S.	15' Mast Arm Length, slip base
2	328+40	70'Rt.	Pole and Base	250 H.P.S.	15' Mast Arm Length, slip base	8	337+02	70'Lt.	Pole and Base	250 H.P.S.	15' Mast Arm Length, slip base
3	330+00	70'Rt.	Pole and Base	250 H.P.S.	15' Mast Arm Length, slip base	9	337+82	70'Rt.	Pole and Base	250 H.P.S.	15' Mast Arm Length, slip base
4	330+90	70'Rt.	J-Box	N/A		10	339+42	70'Rt.	Pole and Base	250 H.P.S.	15' Mast Arm Length, slip base
5	333+82	70'Lt.	Pole and Base	250 H.P.S.	15' Mast Arm Length, slip base						
6	335+42	70'Lt.	Pole and Base	250 H.P.S.	15' Mast Arm Length, slip base						

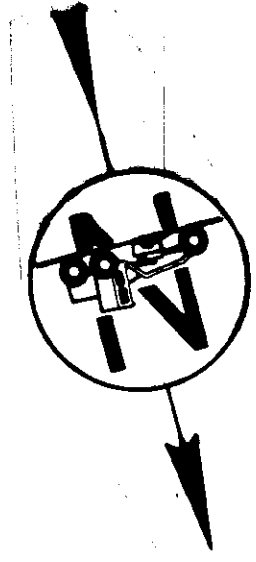
"Asbt-K₂"
 $\Delta = 92^{\circ}28'02''$
 $D = 81^{\circ}51'04'' Rt.$
 $T = 73.08'$
 $L = 112.97'$
 $R = 70.00'$



"Asbt-L"
 $\Delta = 48^{\circ}13'13''$
 $D = 3^{\circ} Rt.$
 $T = 854.73'$
 $L = 1,607.34'$
 $R = 1,909.85'$

NOTES

- 1) Traffic Control Plan shall be as shown on Sheet 8.
 - 2) Two lane traffic shall be maintained from 7 A.M. to 9 A.M. Southbound and 4 P.M. to 6 P.M. Northbound on Egan Expressway Mon. thru Fri.
- ⊙ = Existing Survey Monument

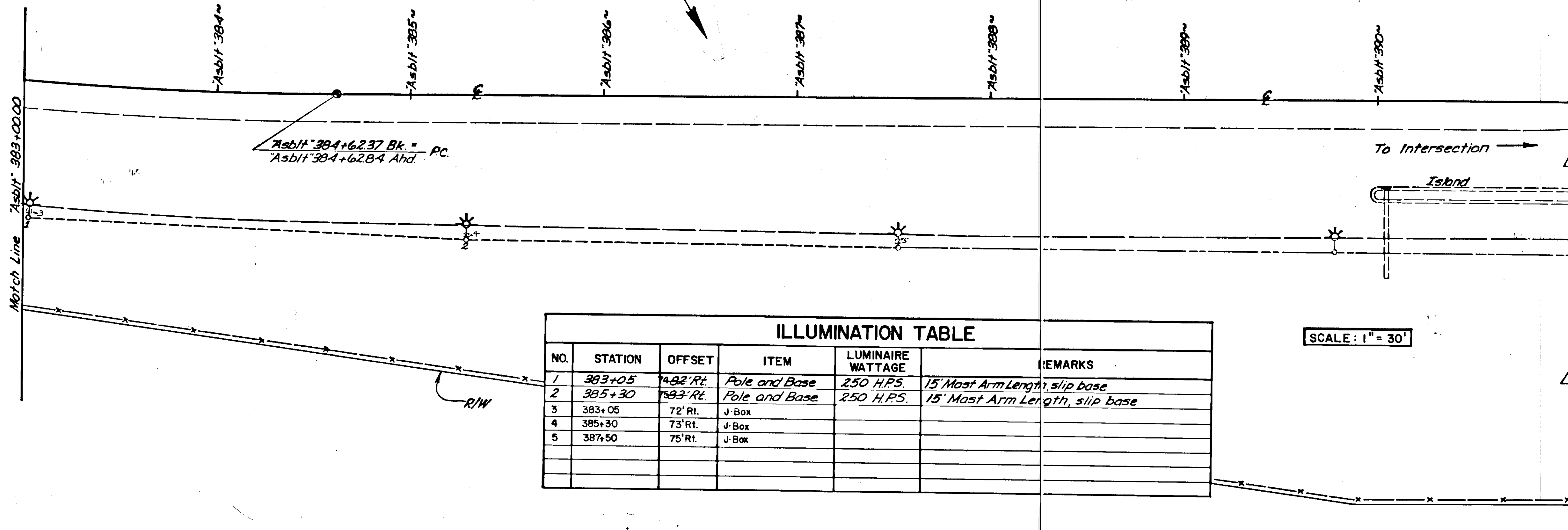


Drawn By : B.E.G.
 Date : 3-85

⊙ = Existing Survey Monument

STATE	PROJECT DESIGNATION	YEAR	SHEET NO.	TOTAL SHEETS
ALASKA	HE5-093-2(17)	1985	11	12

MENDENHALL LOOP ROAD INTERSECTION

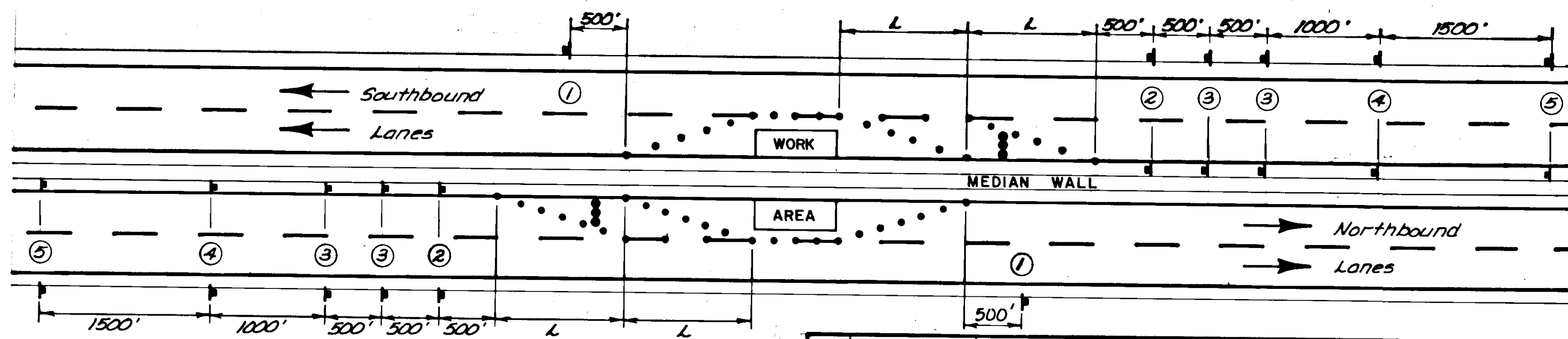


NO.	STATION	OFFSET	ITEM	LUMINAIRE WATTAGE	REMARKS
1	383+05	74.92' Rt.	Pole and Base	250 H.P.S.	15' Mast Arm Length, slip base
2	385+30	75.93' Rt.	Pole and Base	250 H.P.S.	15' Mast Arm Length, slip base
3	383+05	72' Rt.	J-Box		
4	385+30	73' Rt.	J-Box		
5	387+50	75' Rt.	J-Box		

NOTES

- 1) Traffic Control Plan shall be as shown on Standard Drawing C-05.00.
- 2) Two lane traffic shall be maintained from 7 AM to 9 AM Southbound and 4 PM to 6 PM Northbound on Egan Drive, Monday thru Friday.

TRAFFIC CONTROL PLAN FOR THE MEDIAN WALL



LEGEND

- Channelizing Devices
 - Sequencing Arrow Panel
 - L Minimum Length of Taper
 - S Numerical Value of Posted Limit Prior to Work or 85 Percentile Speed
 - W Width of Offset
- $L = 5 \times W$ (for speeds of 45 or more)

NO.	SIZE	MUTCD DESIGNATION	SIGN WORDING
①	60" x 24"	G20-2	END CONSTRUCTION
②	48" x 48"	W4-2R	
③	48" x 48"	CW20-5L	LEFT LANE CLOSED AHEAD
④	48" x 48"	W20-1	ROAD CONSTRUCTION 1/2 MILE
⑤	60" x 60"	CW20-1F	ROAD CONSTRUCTION AHEAD

T.C.P. NOTES

1. Warning lights should be used to mark channelizing devices at night as needed.
2. See ALASKA TRAFFIC MANUAL (MUTCD with Alaska supplement) for additional instruction and for restriction on the use of TRAFFIC CONTROL DEVICES (latest edition).
3. Construction signs shall be fabricated in accordance with the Alaska Sign Design Specifications with material in accordance with Section 615 of the Alaska Standard Specifications for Highway Construction.

Drawn By: B.E.G.
Date: 3-85



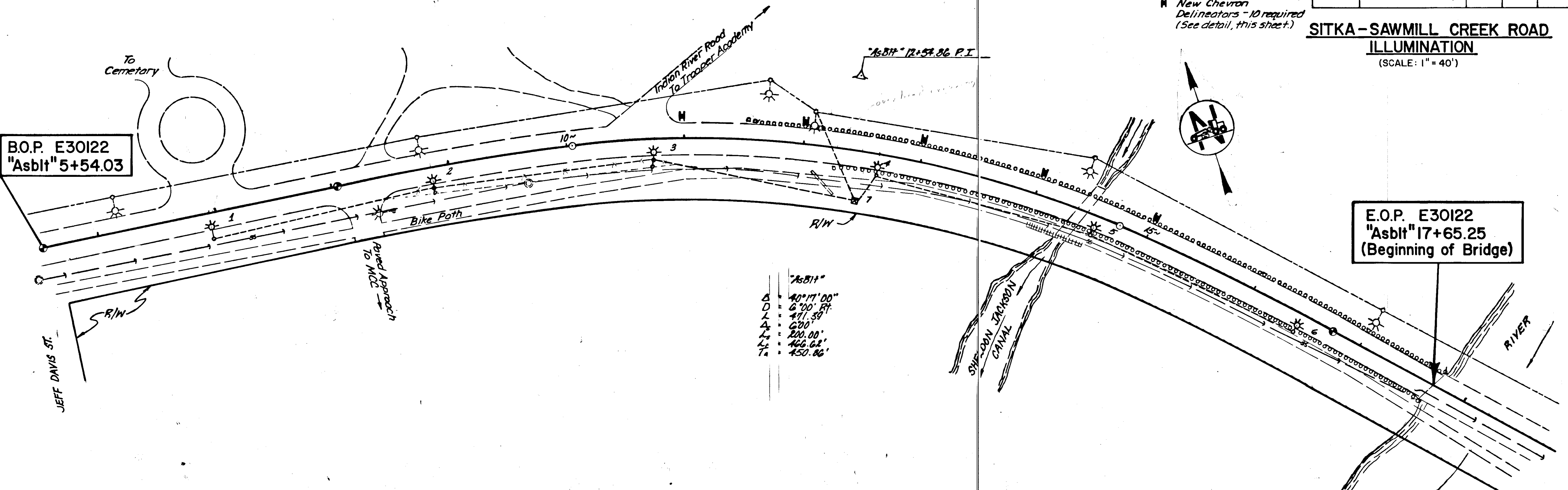
STATE	PROJECT DESIGNATION	YEAR	SHEET NO.	TOTAL SHEETS
ALASKA	HES-RS-M-0933(12)	1985	12	12

**SITKA-SAWMILL CREEK ROAD
ILLUMINATION**
(SCALE: 1" = 40')

- ⊙ Survey Monument
- Man Hole
- ⊞ New Chevron
- ⊞ Delineators - 10 required (See detail, this sheet.)

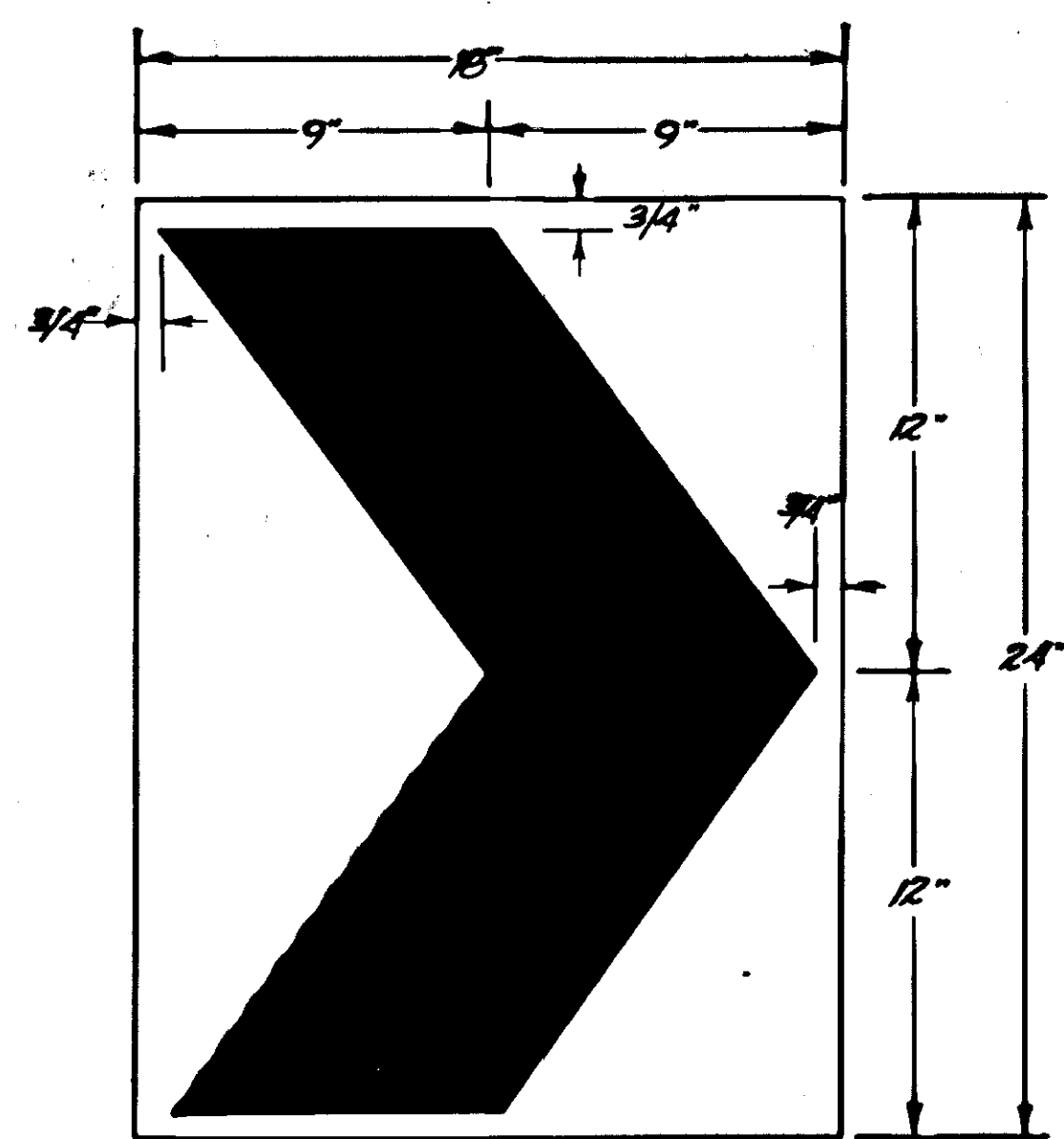
B.O.P. E30122
"Asbit" 5+54.03

E.O.P. E30122
"Asbit" 17+65.25
(Beginning of Bridge)



"Asbit"

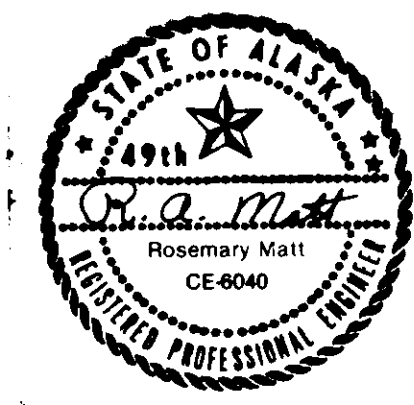
Δ	40°17'00"
D	6°00' RT
L	471.35'
A	600'
L ₂	200.00'
L ₁	466.62'
T _a	450.86'



W1-8 (MUTCD Designation)
N.T.S.
Colors:
Legend - Black
Background - Yellow

NOTE: Mount Chevrons, two per post, one facing each direction of traffic.

Drawn by: B.E.G.
Date: 3-85



NOTES

1. Payment for cutting and patching any pavement shall be incidental to Item 660(3).
2. Average depth of sanitary sewer is 6'.
3. Traffic Control Plan shall be as shown on Standard Drawing C-03.01.
4. No lane closures between 7am and 4pm to 6pm, Monday through Friday.
5. Any installation relative to this project that disturbs the bike path whether by cutting or undermining will be restored as directed by the Engineer.
6. Conduit placed under paved driveway approaches shall be installed as detailed on sheet 5.
7. The Contractor is to be advised that another construction project, an asphalt overlay of Sawmill Creek Road, will also be in progress at the same time as this project.

ILLUMINATION TABLE

NO.	STATION	OFFSET	ITEM	LUMINAIRE WATTAGE	REMARKS
1	6+95	23' Rt.	Pole and Base	250 H.P.S.	10' Mast arm length, slip base
2	8+85	23' Rt.	Pole and Base	250 H.P.S.	6' Mast arm length, slip base
* 3	10+75	23' Rt.	Pole and Base	250 H.P.S.	6' Mast arm length, slip base
4	12+65	17' Rt.	Pole and Base	250 H.P.S.	6' Mast arm length, slip base
5	14+55	17' Rt.	Pole and Base	250 H.P.S.	6' Mast arm length, slip base
6	16+45	17' Rt.	Pole and Base	250 H.P.S.	6' Mast arm length, slip base
7	12+50	40' Rt.	Load Center	-	Mounted on 35' timber pole (total length) (Class 4)

* May require pavement repairs to bike path, incidental to bid Item 660(3).