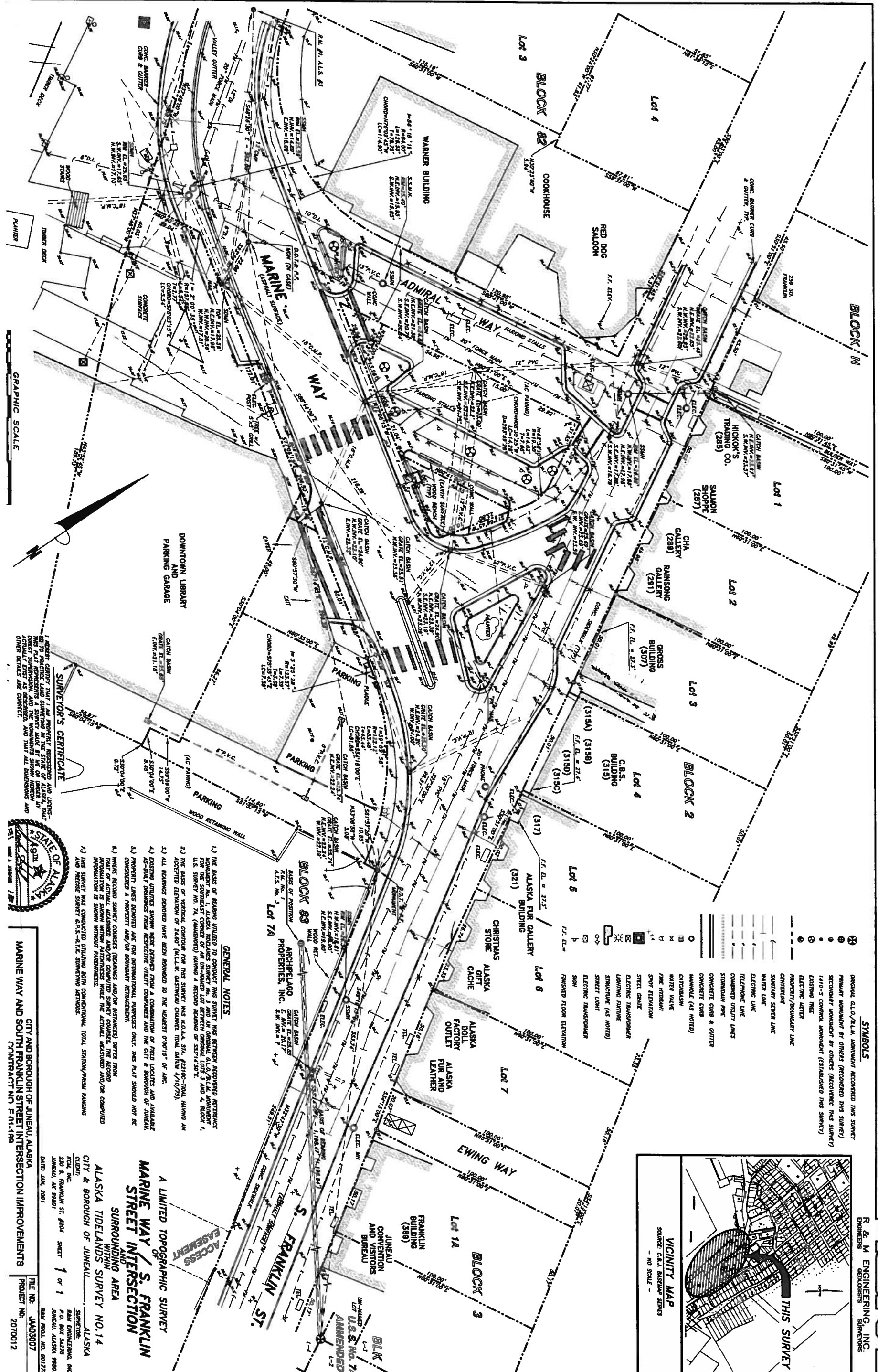


SYMBOLS

- ORIGINAL G.L.O./B.L.K. MONUMENT RECOVERED THIS SURVEY
- PRIMARY MONUMENT BY OTHERS (RECOVERED THIS SURVEY)
- ⊙ SECONDARY MONUMENT BY OTHERS (RECOVERED THIS SURVEY)
- ⊙ 1410-5 CONTROL MONUMENT (ESTABLISHED THIS SURVEY)
- ⊙ EXISTING TREE
- ⊙ EXISTING METER
- ⊙ PROPERTY BOUNDARY LINE
- ⊙ CENTERLINE
- ⊙ SANITARY SINKER LINE
- ⊙ WATER LINE
- ⊙ ELECTRIC LINE
- ⊙ TELEPHONE LINE
- ⊙ COURRED UTILITY LINES
- ⊙ STORMDRAIN PIPE
- ⊙ CONCRETE CURB & GUTTER
- ⊙ MANHOLE (AS NOTED)
- ⊙ CATCHBASIN
- ⊙ WATER VALVE
- ⊙ FIRE HYDRANT
- ⊙ SPOT ELEVATION
- ⊙ STEEL GATE
- ⊙ ELECTRIC TRANSFORMER
- ⊙ LIGHTING FIXTURE
- ⊙ STRUCTURE (AS NOTED)
- ⊙ STREET LIGHT
- ⊙ ELECTRIC TRANSFORMER
- ⊙ SON
- ⊙ FINISHED FLOOR ELEVATION



GENERAL NOTES

- 1) THE BASIS OF READING UTILIZED TO CONDUCT THIS SURVEY WAS BETWEEN RECOVERED REFERENCE MONUMENT NO. 1, ALASKA TIDELANDS SURVEY NO. 3 AND AN ORIGINAL G.L.O./B.L.K. MONUMENT FOR THE SOUTHWEST CORNER OF AN UN-MADE LOT BETWEEN ORIGINAL LOTS 3 AND 4, BLOCK 1, U.S. SURVEY NO. 74, (UNRECORDED) HAVING A RECORD BEARING OF S53°14'50"E.
- 2) THE BASIS OF VERTICAL CONTROL FOR THIS SURVEY WAS N.O.A.A. ST. #22100-TOTAL HAVING AN ACCEPTED ELEVATION OF 24.80' (M.L.L.W. GASTNEW CHANNEL TIDAL DATUM 4/10/79).
- 3) ALL READINGS DENOTED HAVE BEEN ROUNDED TO THE NEAREST 0.001'S OF ARC.
- 4) EXISTING UTILITIES SHOWN WERE DERIVED FROM A COMPARISON OF FIELD LOCATES AND AVAILABLE AS-BUILT DRAWINGS FROM RESPECTIVE UTILITY COMPANIES AND THE CITY & BOROUGH OF JUNEAU. PROPERTY LINES DENOTED ARE FOR INFORMATIONAL PURPOSES ONLY. THIS PLAN SHOULD NOT BE CONSIDERED A PROPERTY AND/OR BOUNDARY REFERENCE.
- 5) WHERE RECORD SURVEY COURSES (BEARINGS AND/OR DISTANCES) DIFFER FROM THE FIELD LOCATES AND/OR AVAILABLE AS-BUILT DRAWINGS, THE FIELD LOCATES AND/OR AVAILABLE AS-BUILT DRAWINGS SHALL PREVAIL UNLESS INDICATED OTHERWISE. THE ACTUAL MEASURED AND/OR COMPUTED INFORMATION IS SHOWN WITHOUT PARANTHESIS.
- 6) THIS SURVEY WAS CONDUCTED UTILIZING A TOTAL STATION/REFLECTOR RANGING AND PRESSURE SURVEY G.L.S. WITH SURVEYING REFLECTORS.

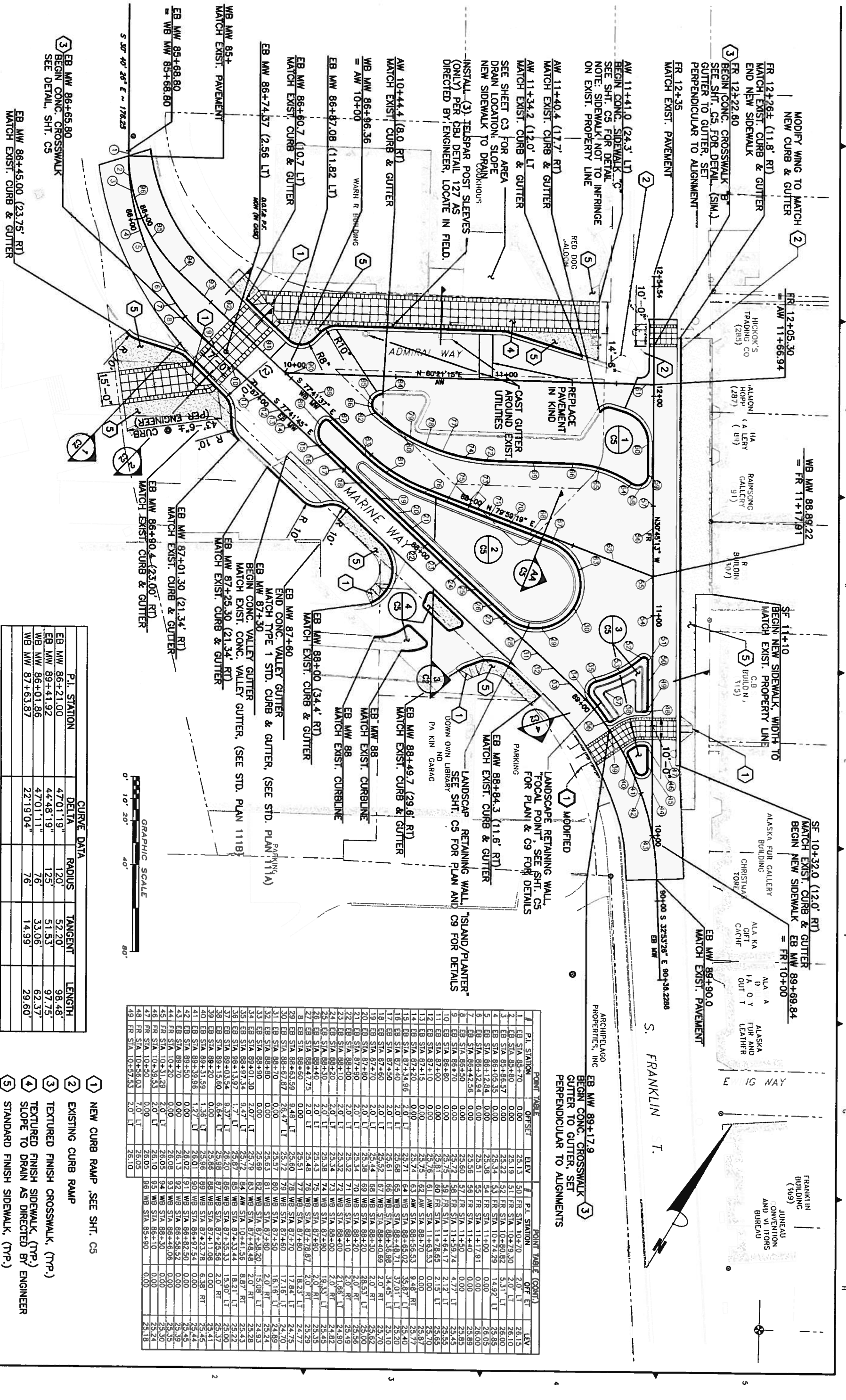
A LIMITED TOPOGRAPHIC SURVEY
 OF
MARINE WAY / S. FRANKLIN STREET INTERSECTION
 AND
 SURROUNDING AREA
 WITHIN
 ALASKA TIDELANDS SURVEY NO. 14
 CITY & BOROUGH OF JUNEAU
 ALASKA

DATE: JAN. 2001
 CLIENT: CITY & BOROUGH OF JUNEAU
 SURVEYORS: R&M ENGINEERING, INC.
 230 S. FRANKLIN ST. #204
 JUNEAU, AK 99801
 FILE NO.: JMO3007
 PROJECT NO.: 2070012

SURVEYOR'S CERTIFICATE

I, ENGINEER, CERTIFY THAT I AM A PROPERLY REGISTERED AND LICENSED SURVEYOR IN THE STATE OF ALASKA AND THAT I HAVE PERSONALLY AND INDEPENDENTLY CONDUCTED THIS SURVEY AND THE MOVEMENTS SHOWN HEREON ACCORDING TO THE REQUIREMENTS OF THE ALASKA SURVEYING ACT AND THAT ALL DIMENSIONS AND OTHER DETAILS ARE CORRECT.

GRAPHIC SCALE



CURVE DATA

P.I. STATION	DELTA	RADIUS	TANGENT	LENGTH
EB MW 86+21.00	47°01'19"	120'	52.20'	98.48'
EB MW 89+41.92	44°48'19"	125'	51.53'	97.75'
WB MW 86+01.86	47°01'11"	76'	33.06'	62.37'
WB MW 87+63.87	22°19'04"	76'	14.99'	29.60'

- 1 NEW CURB RAMP, SEE SHIT. C5
- 2 EXISTING CURB RAMP
- 3 TEXTURED FINISH SIDEWALK, (TYP.)
- 4 SLOPE TO DRAIN AS DIRECTED BY ENGINEER
- 5 STANDARD FINISH SIDEWALK, (TYP.)

POINT TABLE

#	P.I. STATION	OFFSET	ELEV.	#	P.I. STATION	OFFSET	ELEV.
1	EB SIA 88+70	0.00	25.13	50	FR SIA 104+70	2.0' LT	26.15
2	EB SIA 88+60	0.00	25.19	51	FR SIA 104+70	2.0' LT	26.10
3	EB SIA 88+56.57	0.00	25.22	52	FR SIA 104+70	5.31' LT	26.00
4	EB SIA 88+50.35	0.00	25.34	53	FR SIA 104+70	14.92' LT	26.85
5	EB SIA 88+43.84	0.00	25.36	54	FR SIA 104+70	0.00	26.05
6	EB SIA 88+32.98	0.00	25.31	55	FR SIA 11+79.1	0.00	26.00
7	EB SIA 88+24.56	0.00	25.35	56	FR SIA 11+40	0.00	26.89
8	EB SIA 88+15.00	0.00	25.50	57	FR SIA 11+40	0.00	26.85
9	EB SIA 88+70	0.00	25.72	58	FR SIA 11+49.74	4.77' LT	26.45
10	EB SIA 88+70	0.00	25.75	59	FR SIA 11+64.17	2.12' LT	26.55
11	EB SIA 87+00	0.00	25.91	60	FR SIA 11+78.65	2.15' LT	26.65
12	EB SIA 87+10	0.00	25.76	61	AW SIA 11+63.53	0.00	25.70
13	EB SIA 87+15	0.00	25.74	62	AW SIA 88+70	0.00	25.87
14	EB SIA 87+20	0.00	25.74	63	AW SIA 88+55.53	9.48' RT	25.77
15	EB SIA 87+30	2.0' LT	25.71	64	WB SIA 88+65.02	35.87' RT	25.40
16	EB SIA 87+40	2.0' LT	25.68	65	WB SIA 88+48.71	37.01' RT	25.20
17	EB SIA 87+50	2.0' LT	25.61	66	WB SIA 88+35.98	34.45' RT	25.10
18	EB SIA 87+60	2.0' LT	25.52	67	WB SIA 88+40.69	2.0' RT	25.70
19	EB SIA 87+70	2.0' LT	25.44	68	WB SIA 88+30	2.0' RT	25.62
20	EB SIA 87+80	2.0' LT	25.38	69	WB SIA 88+20	28.53' LT	25.00
21	EB SIA 87+90	2.0' LT	25.34	70	WB SIA 88+10	2.0' RT	25.56
22	EB SIA 88+00	2.0' LT	25.32	71	WB SIA 88+10	2.0' RT	25.49
23	EB SIA 88+10	2.0' LT	25.32	72	WB SIA 88+00	21.66' LT	24.90
24	EB SIA 88+20	2.0' LT	25.34	73	WB SIA 88+00	2.0' RT	24.82
25	EB SIA 88+30	2.0' LT	25.38	74	WB SIA 87+80	19.33' LT	25.45
26	EB SIA 88+40	2.0' LT	25.43	75	WB SIA 87+80	2.0' RT	25.35
27	EB SIA 88+47.75	2.0' LT	25.48	76	WB SIA 87+80	2.0' RT	25.29
28	EB SIA 88+60	0.00	25.41	77	WB SIA 87+80	18.23' LT	24.77
29	EB SIA 88+63.59	9.48' RT	25.60	78	WB SIA 87+20	17.84' LT	24.75
30	EB SIA 88+67.87	26.47' RT	25.72	79	WB SIA 87+60	17.16' LT	24.70
31	EB SIA 88+70	0.00	25.57	80	WB SIA 87+50	16.16' LT	24.89
32	EB SIA 88+80	0.00	25.63	81	WB SIA 87+50	2.0' RT	25.24
33	EB SIA 88+90	0.00	25.69	82	WB SIA 87+38.20	15.08' LT	24.93
34	EB SIA 89+00	0.00	25.79	83	WB SIA 87+44.48	8.87' RT	25.28
35	EB SIA 89+07.34	5.47' LT	25.72	84	AW SIA 10+41.56	18.21' LT	25.22
36	EB SIA 89+13.97	1.7' LT	25.67	85	WB SIA 87+32.33	15.07' LT	25.09
37	EB SIA 89+15.80	6.64' LT	25.98	86	WB SIA 87+23.58	2.0' RT	25.37
38	EB SIA 89+15.80	0.00	25.98	87	WB SIA 87+11.08	9.00' RT	25.41
39	EB SIA 89+15.80	0.00	25.98	88	WB SIA 87+11.08	9.00' RT	25.41
40	EB SIA 89+15.80	1.35' LT	25.98	89	WB SIA 87+23.58	2.0' RT	25.44
41	EB SIA 89+39.98	1.27' LT	26.01	90	WB SIA 88+97.24	0.00	25.44
42	EB SIA 89+30	0.00	26.02	91	WB SIA 88+82.50	0.00	25.45
43	EB SIA 89+30	0.00	26.13	92	WB SIA 88+58.52	0.00	25.39
44	FR SIA 104+20	2.0' LT	26.08	93	WB SIA 88+46.06	0.00	25.30
45	FR SIA 104+20	2.0' LT	26.05	94	WB SIA 88+30	0.00	25.35
46	FR SIA 104+90	0.00	26.10	95	WB SIA 88+10	0.00	25.24
47	FR SIA 104+90	0.00	26.05	96	WB SIA 85+90	0.00	25.18
48	FR SIA 104+90	2.0' LT	26.05				
49	FR SIA 104+97.53	2.0' LT	26.10				

APPROVALS

DATE	DESIGNED	DRAWN	CHECKED	APPROVED
	JNS	TLS	RRB	

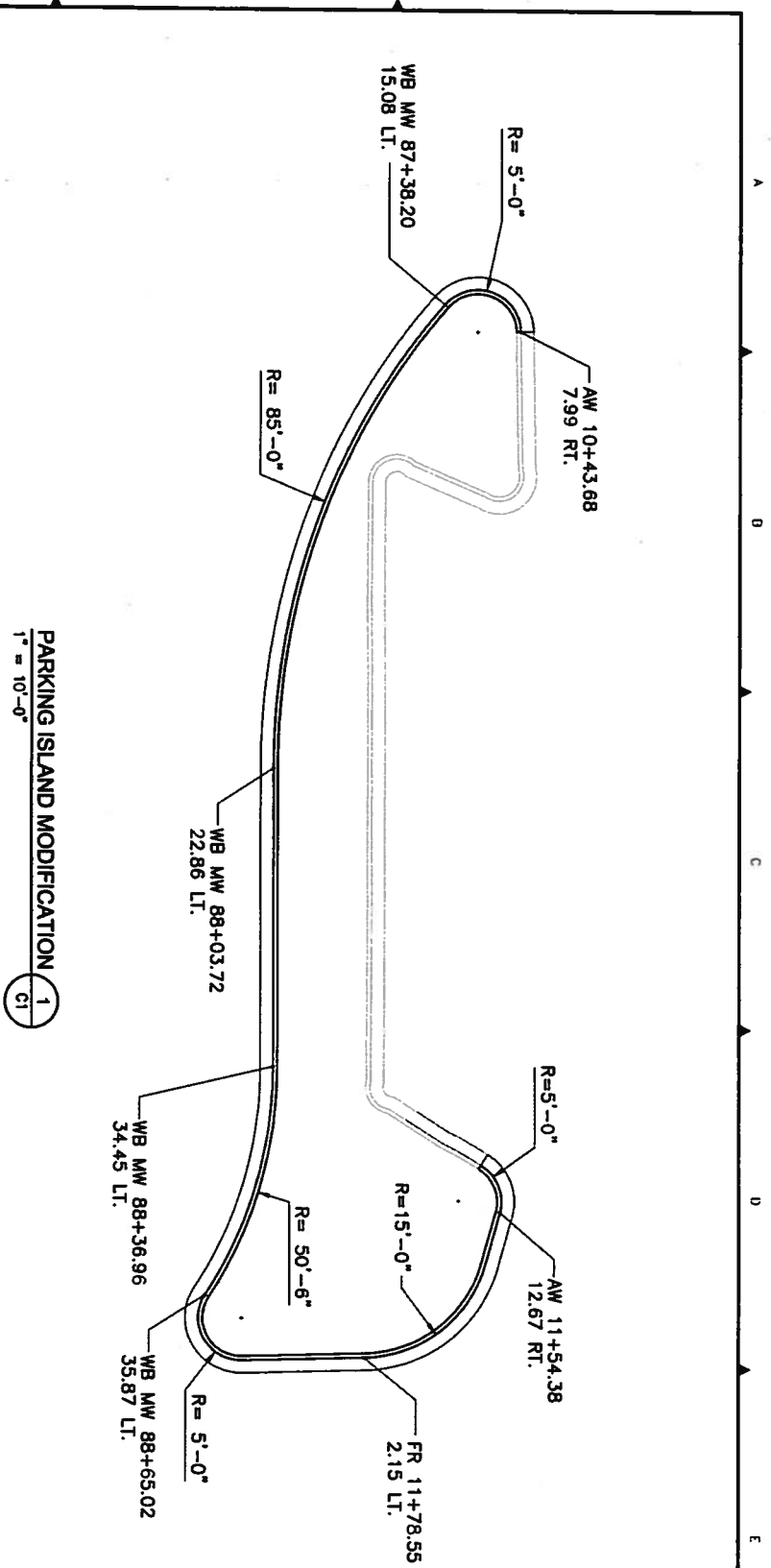
REVISION DESCRIPTION

NO.	DESCRIPTION
001	ISSUE FOR PERMIT

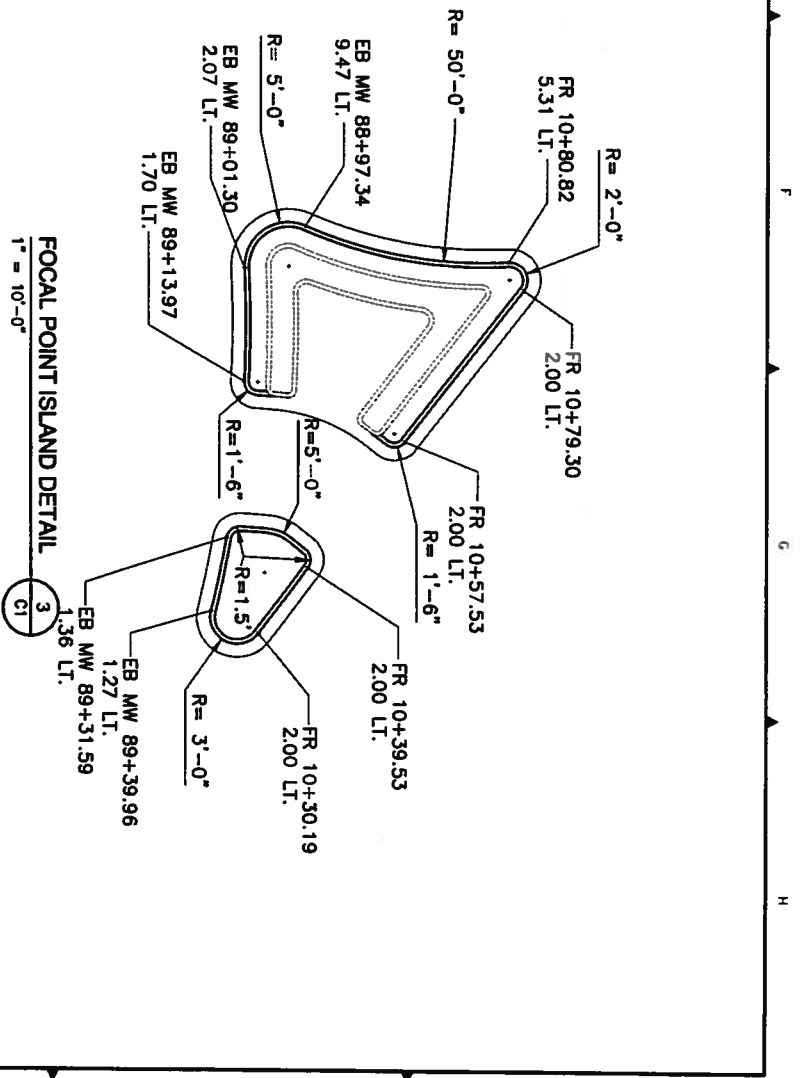
Tetra Tech/KCM, Inc.
 230 South Franklin, Suite 204
 Juneau, Alaska 99801-1364
 907-586-6400 Fax: 907-483-3877



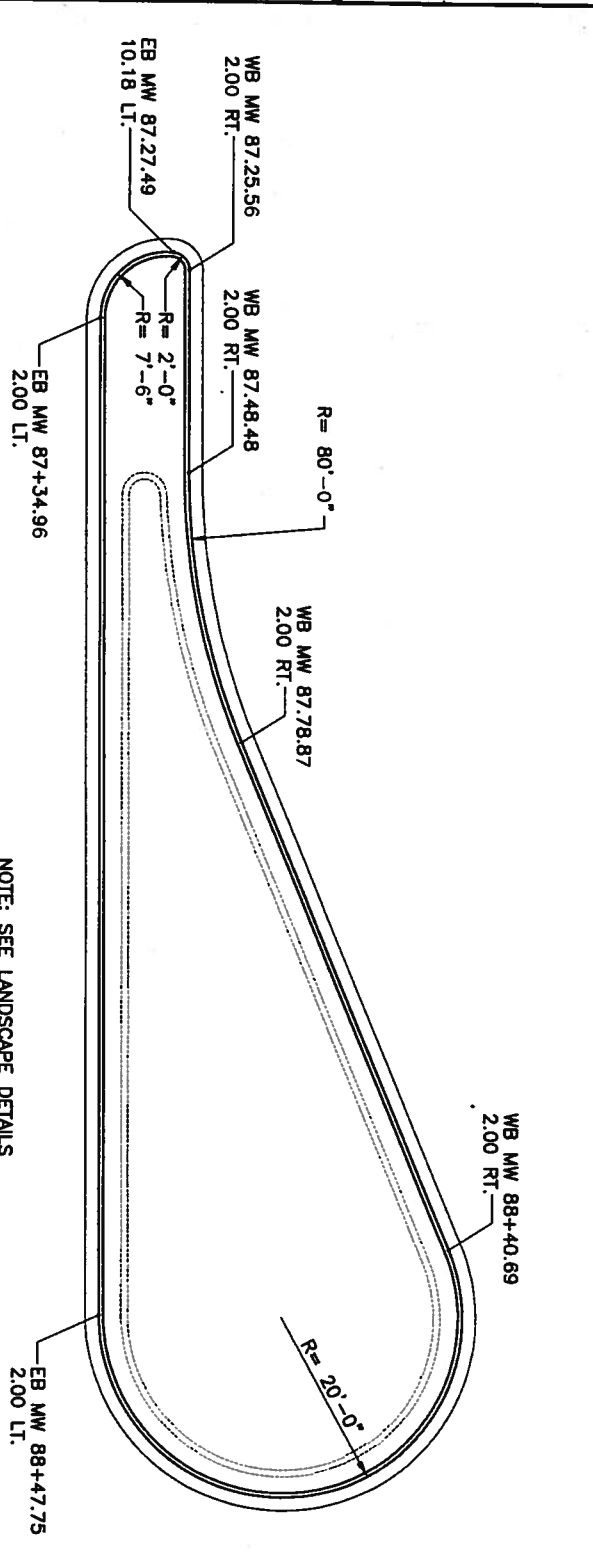
CITY AND BOROUGH OF JUNEAU, ALASKA
 MARINE WAY AND SOUTH FRANKLIN STREET INTERSECTION IMPROVEMENTS
 CONTRACT NO. E01-189
 HORIZONTAL AND VERTICAL CONTROL LAYOUT
 SHEET: 6 OF 16



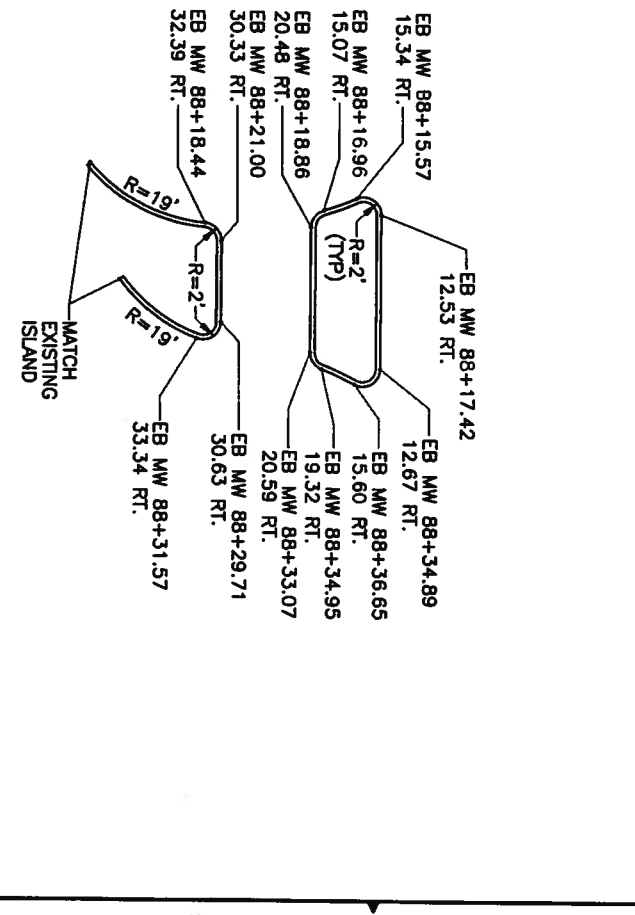
PARKING ISLAND MODIFICATION 1
1" = 10'-0"



FOCAL POINT ISLAND DETAIL 3
1" = 10'-0"



MEDIAN ISLAND/PLANTER DET. 2
1" = 10'-0"



LIBRARY ISLAND DETAIL 4
1" = 10'-0"

NOTE: SEE LANDSCAPE DETAILS FOR RETAINING WALL AND PLANTING LAYOUTS

DATE:	DESIGNED BY:	DRWN:	CHECKED:	APPROVED:
	JKS	TLS	RRR	
DATE:	DESIGNED BY:	DRWN:	CHECKED:	APPROVED:
	JKS	TLS	RRR	
DATE:	DESIGNED BY:	DRWN:	CHECKED:	APPROVED:
	JKS	TLS	RRR	

Tetra Tech/KCM, Inc.
230 South Franklin, Suite 204
Juneau, Alaska 99901-1384
907-586-6400 Fax: 907-483-3977



CITY AND BOROUGH OF JUNEAU, ALASKA
MARINE WAY AND SOUTH FRANKLIN STREET INTERSECTION IMPROVEMENTS
CONTRACT NO. E01-189
ISLAND DETAILS

FILE NO: JMM00006
PROJECT NO: 2070012
DWG NO: C6
SHEET: 11 OF 18

This drawing is full size when 27" x 34" or is reduced to half size when 11" x 17"

PLANT MATERIAL SCHEDULE

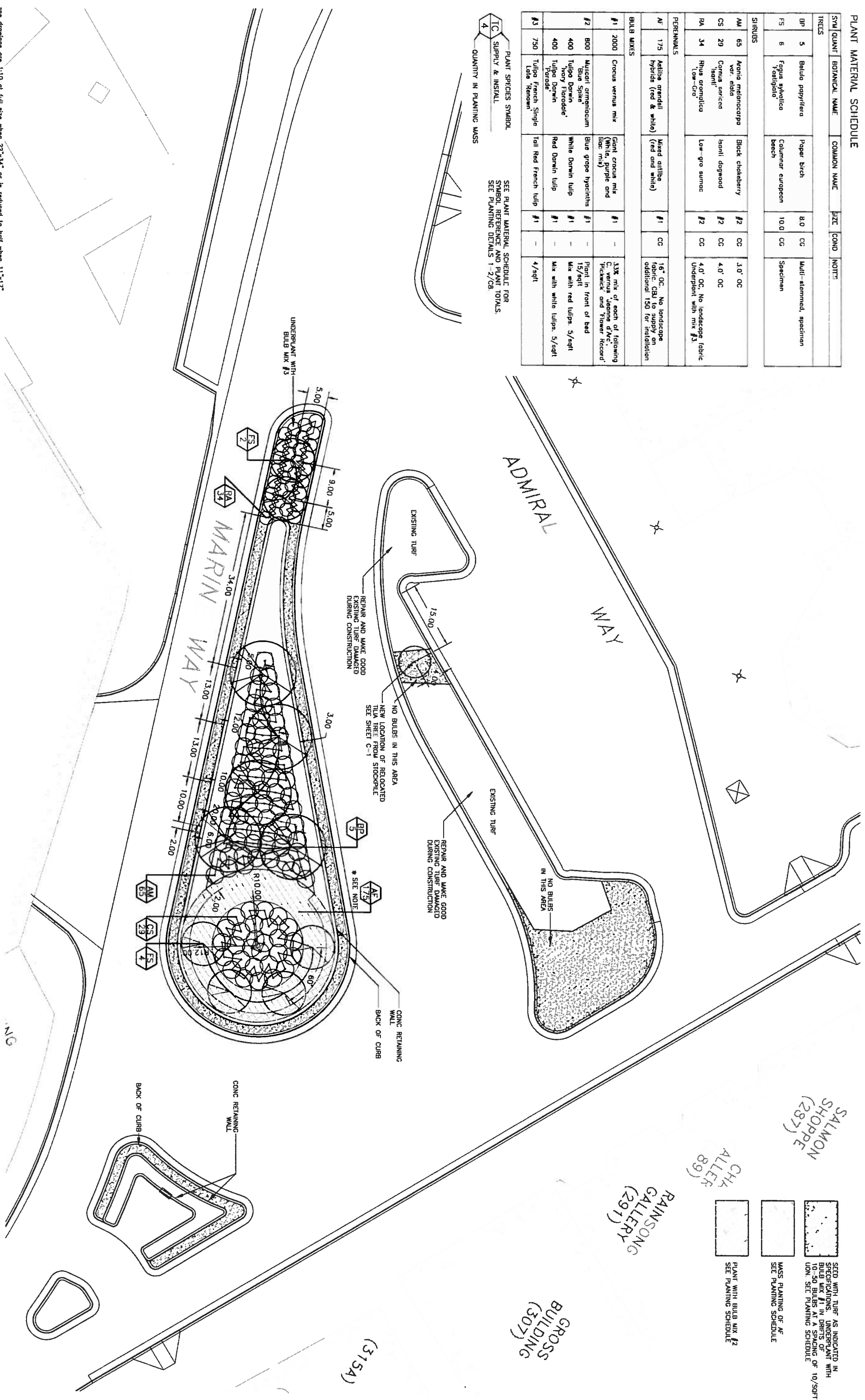
SYM QUANT	BOTANICAL NAME	COMMON NAME	SIZE	COND	NOTES
TREES					
BP 5	Betula papyrifera	Paper Birch	8.0	CC	Multi-stemmed specimen
FS 6	Fagus sylvatica 'Fastigiata'	Columnar european beech	10.0	CC	Specimen
SHRUBS					
AM 65	Aconitum napellus	Black chokeberry	#2	CC	3.0' OC
CS 29	Cornus sericea 'ident'	Isanti dogwood	#2	CC	4.0' OC
RA 34	Rhus ornaticornis 'Low-Gro'	Low-gro sumac	#2	CC	4.0' OC, No landscape fabric Underplant with mix #3

PERENNIALS					
AF 175	Achillea millefolium hybrids (red & white)	Mixed achillea (red and white)	#1	CC	16" OC, No landscape fabric. CBU to supply an additional 150 for installation

BULB MIXES					
#1	2000 Crocus verus mix	Giant crocus mix (white, purple and blue)	#1	-	33% mix of each of following: C. verus 'Jasmina d'Arc', 'Falken' and 'Flower Record'
#2	800 Muscari armeniacum 'Blue Spike'	Blue grape hyacinth	#1	-	Plant in front of bed
400	Tulipa Darwin 'Henry Fordale'	White Darwin tulip	#1	-	Mix with red tulips 5/sqft
400	Tulipa Darwin 'Fordale'	Red Darwin tulip	#1	-	Mix with white tulips 5/sqft
#3	750 Tulipa French Single Late Remont	Tall Red French tulip	#1	-	4/sqft

PLANT SPECIES SYMBOL
 TC SUPPLY & INSTALL
 4 QUANTITY IN PLANTING MASS

SEE PLANT MATERIAL SCHEDULE FOR SYMBOL REFERENCE AND PLANT TOTALS.
 SEE PLANTING DETAILS 1-2/CG



SALMON SHOPPE (287)

CHK ALLER (89)

RAINSONG GALLERY (291)

GROSS BUILDING (307)

(3154)

SEED WITH TURF AS INDICATED IN SCHEDULE. SEE PLANTING SCHEDULE FOR BULB MIX #1 IN BEDS OF 10-50 BULBS AT A SPACING OF 10/50FT UN. SEE PLANTING SCHEDULE.

MASS PLANTING OF AF SEE PLANTING SCHEDULE.

PLANT WITH BULB MIX #2 SEE PLANTING SCHEDULE.

the drawings are 1:10 of full size when 22"x34" or is reduced to half when 11"x17"

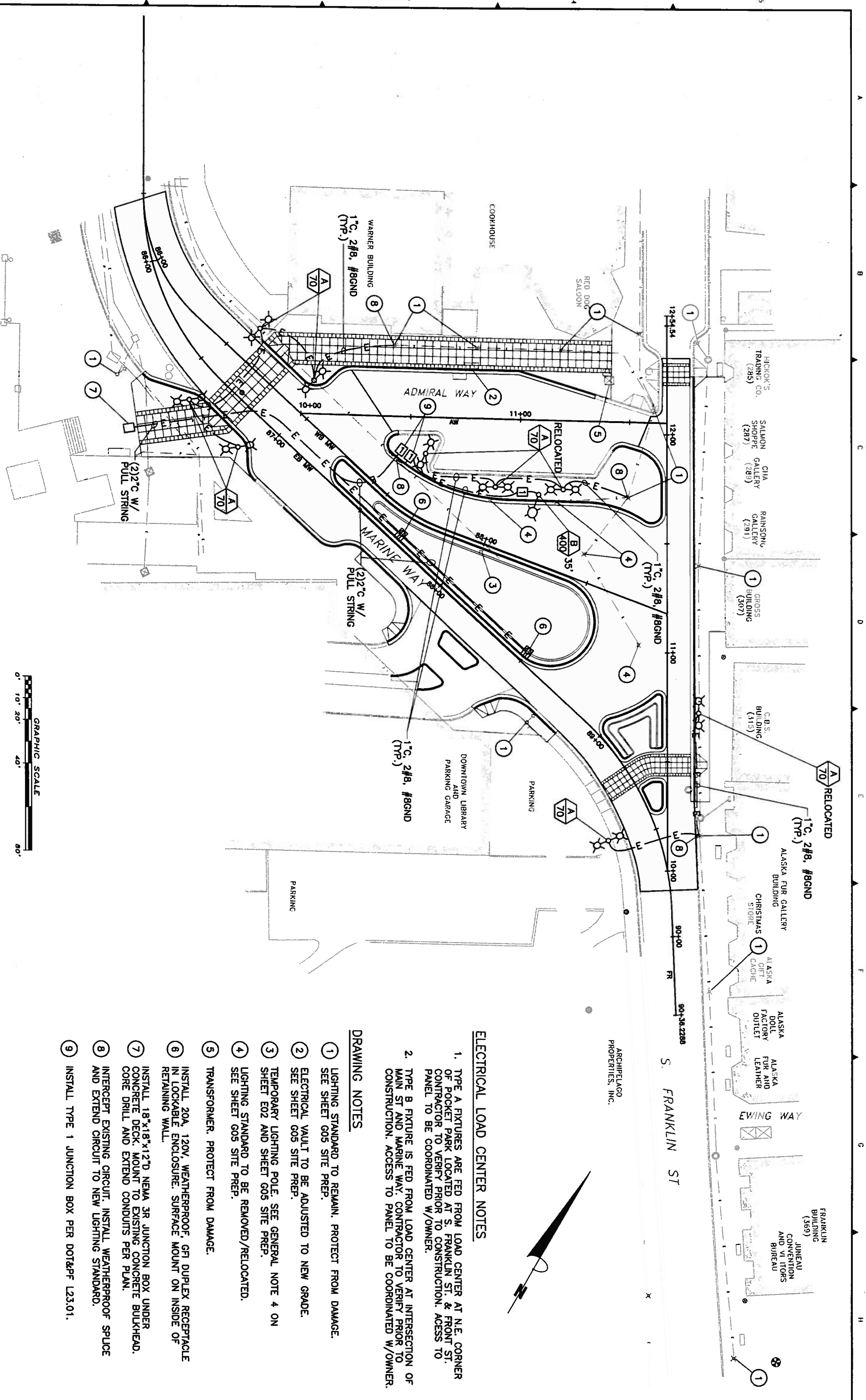
DATE	DES	CHKD	APPROVALS	REVISION DESCRIPTION

Tetra Tech/KCM, Inc. Jensen
 230 South Franklin, Suite 204
 Juneau, Alaska 99801-1364
 907-586-6400 Fax: 907-483-3877

Jensen Yorda Lott Inc.
 325 Third Street
 Juneau, Alaska 99801
 907-586-6400

CITY AND BOROUGH OF JUNEAU, ALASKA
 MARINE WAY AND SOUTH FRANKLIN STREET INTERSECTION IMPROVEMENTS
 CONTRACT NO. E01-189
 LANDSCAPE PLANTING PLAN

FILE NO: JAMD09
 PROJECT NO: 2070012
 DWG NO: C9
 SHEET: 14 OF 16



ELECTRICAL LOAD CENTER NOTES

1. TYPE A FIXTURES ARE FED FROM LOAD CENTER AT N.E. CORNER OF POCKET PARK LOCATED AT S. FRANKLIN ST. & FRONT ST. CONTRACTOR TO VERIFY PRIOR TO CONSTRUCTION. ACCESS TO PANEL TO BE COORDINATED W/OWNER.
2. TYPE B FIXTURE IS FED FROM LOAD CENTER AT INTERSECTION OF MAIN ST AND MARINE WAY. CONTRACTOR TO VERIFY PRIOR TO CONSTRUCTION. ACCESS TO PANEL TO BE COORDINATED W/OWNER.

DRAWING NOTES

1. LIGHTING STANDARD TO REMAIN. PROTECT FROM DAMAGE.
2. SEE SHEET G05 SITE PREP.
3. ELECTRICAL VAULT TO BE ADJUSTED TO NEW GRADE.
4. SEE SHEET G05 SITE PREP.
5. TEMPORARY LIGHTING POLE. SEE GENERAL NOTE 4 ON SHEET E02 AND SHEET G05 SITE PREP.
6. LIGHTING STANDARD TO BE REMOVED/RELOCATED.
7. SEE SHEET G05 SITE PREP.
8. TRANSFORMER. PROTECT FROM DAMAGE.
9. INSTALL 20A, 120V, WEATHERPROOF, GFN DUPLEX RECEPTACLE IN LOCKABLE ENCLOSURE. SURFACE MOUNT ON INSIDE OF RETAINING WALL.
10. INSTALL 18"x18"x12" NEMA 3R JUNCTION BOX UNDER CONCRETE DECK. MOUNT TO EXISTING CONCRETE BULKHEAD. CORE DRILL AND EXTEND CONDUITS PER PLAN.
11. INTERCEPT EXISTING CIRCUIT. INSTALL WEATHERPROOF SPICE AND EXTEND CIRCUIT TO NEW LIGHTING STANDARD.
12. INSTALL TYPE 1 JUNCTION BOX PER DOT&PF L23.01.



DESIGNED: KMG	DATE:	CML REVIEW:
DRAWN: TJS	DESIGNED: KMG	ARCH REVIEW:
CHECKED: SMC	DRAWN: TJS	STRUC REVIEW:
APPROVED:	CHECKED: SMC	ELECT REVIEW:
	APPROVED:	MECH REVIEW:

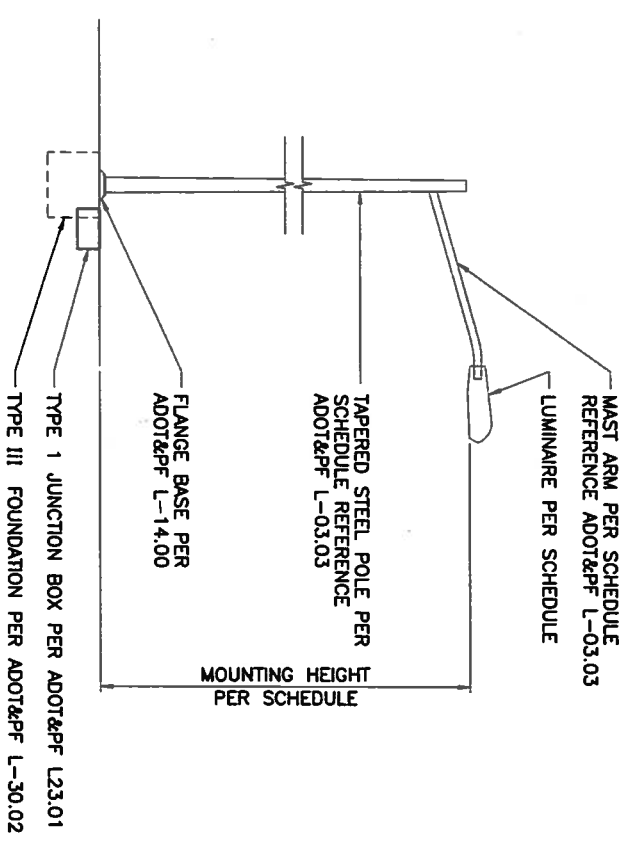
Tetra Tech/KCM, Inc.
 230 South Franklin, Suite 204
 Juneau, Alaska 99801-1364
 907-586-6400 Fax: 907-483-3877



CITY AND BOROUGH OF JUNEAU, ALASKA
 MARINE WAY AND SOUTH FRANKLIN STREET INTERSECTION IMPROVEMENTS
 CONTRACT NO. E01-189

FILE NO: JMW00E01
 PROJECT NO: 2070012
 DWG NO: E1
 SHEET: 15 OF 16

This drawing is full size when 22" x 34" or is reduced to half size when 11" x 17"



TYPE "B" LIGHTING STANDARD

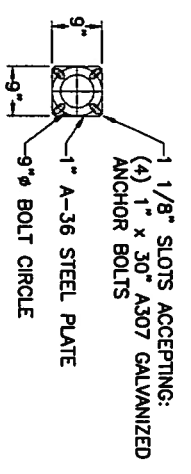
SCALE: NTS

NOTE

1. SEE ADOT&PF STANDARD PLAN L-03.03 FOR POLE AND MAST ARM DETAILS.

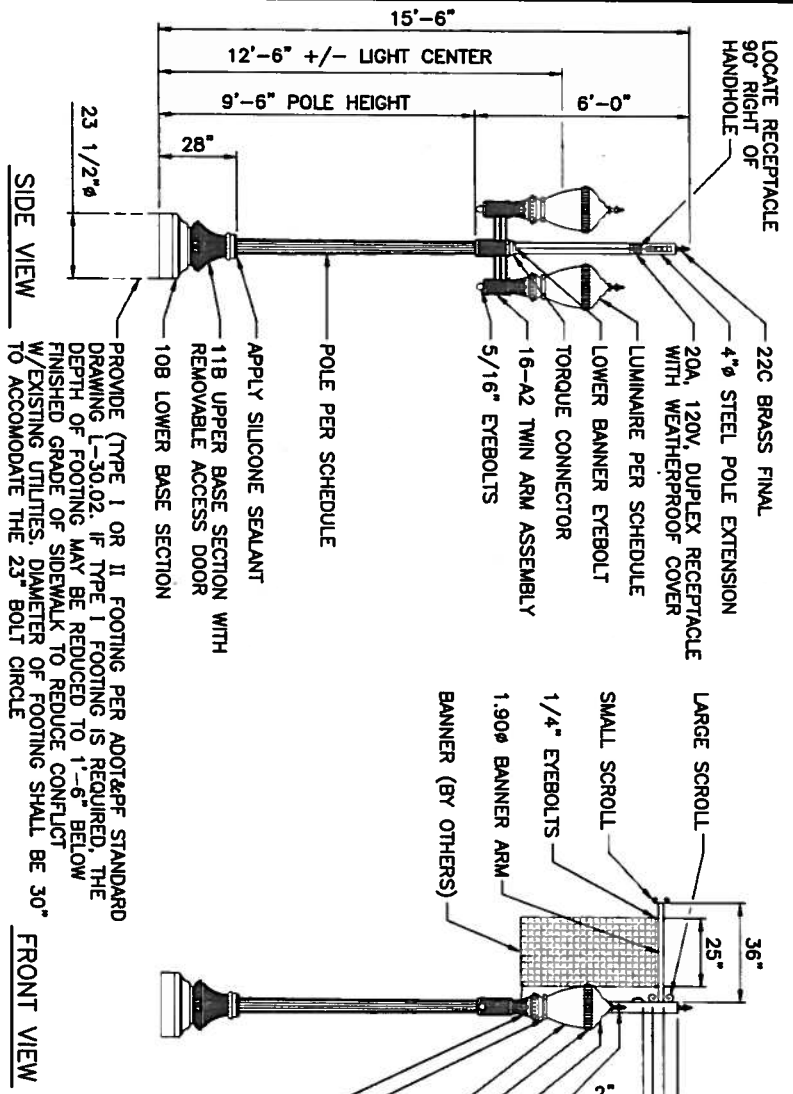
GENERAL NOTES

1. ELECTRICAL INSTALLATION SHALL BE IN ACCORDANCE WITH THE NEC, LOCAL CODES, ORDINANCES AND UTILITY COMPANY STANDARDS.
2. ALL EQUIPMENT SHALL BE NEW AND UL LISTED UNLESS NOTED OTHERWISE.
3. PROVIDE ALL ITEMS NECESSARY FOR A COMPLETE ELECTRICAL INSTALLATION. THE ELECTRICAL DRAWINGS ARE DIAGNOSTIC IN NATURE. EXISTING ELECTRICAL ITEMS SHOWN ARE BASED ON AVAILABLE SURVEY DATA. THE CONTRACTOR SHALL BE RESPONSIBLE FOR VERIFYING ALL EXISTING CONDITIONS IN THE FIELD.
4. THE CONTRACTOR SHALL MAINTAIN EXISTING ROADWAY LIGHTING DURING ALL HOURS OF DARKNESS THROUGHOUT ALL CONSTRUCTION PHASES. COORDINATE ALL ELECTRIC CIRCUIT OUTAGES WITH LOCAL REPRESENTATIVES.
5. SEE SHEET G05 - SITE PREP FOR LIGHTING STANDARDS TO BE REMOVED AND MANHOLES TO BE ADJUSTED AND EXISTING UTILITY INFORMATION.
6. CONTRACTOR SHALL PROTECT ALL EXISTING UNDERGROUND UTILITIES.
7. FINAL ORIENTATION OF TYPE A FIXTURES TO BE COORDINATED WITH ENGINEER.



BASE PLATE DETAIL

SCALE: NTS



TYPE "A" LIGHTING STANDARD

SCALE: NTS

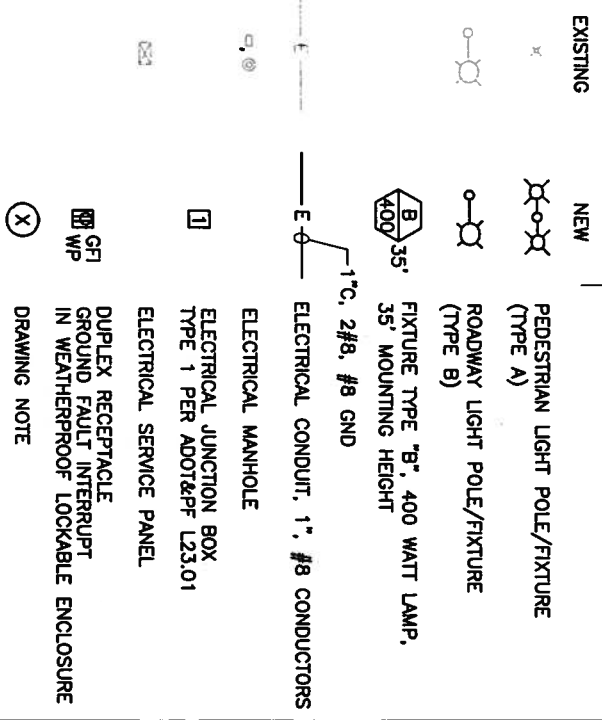
PAINT SPECIFICATION
ALL CAST IRON AND STEEL LIGHT POLE PARTS ARE TO BE FACTORY PRIME PAINTED RED OXIDE AND FINISH PAINTED POLY COAT "JUNEAU" BLUE (AQUA-MARINE).

NEW LIGHT STANDARD SUMMARY TABLE

TYPE	LOCATION	OFFSET(ft)	HEIGHT	POLE COLOR	FOUND. TYPE	MAST ARM	LUMINAIRE
(B)	AW 11+09.0	33.0 RT	35'	NA	TYPE III	10'	CUT OFF TYPE * 400W, HPS, 240V, M-C-III
(A)	EBMW 86+60.0	17.0 RT	15'-6"	SEE DETAIL	SEE DETAIL	N/A	70W, HPS, 208V, TYPE III, VSCO #M-B-A2-F/9'-6"
(A)	EBMW 86+90.0	17.0 RT	15'-6"	SEE DETAIL	SEE DETAIL	N/A	70W, HPS, 208V, TYPE III, VSCO #M-B-A2-F/9'-6"
(A)	WBMW 86+56.0	15.7 LT	15'-6"	SEE DETAIL	SEE DETAIL	N/A	70W, HPS, 208V, TYPE III, VSCO #M-B-A2-F/9'-6"
(A)	EBMW 89+40.0	22.0 RT	15'-6"	SEE DETAIL	SEE DETAIL	N/A	70W, HPS, 208V, TYPE III, VSCO #M-B-A2-F/9'-6"
(A)	WBMW 87+90.0	17.0 LT	15'-6"	SEE DETAIL	SEE DETAIL	N/A	70W, HPS, 208V, TYPE III, VSCO #M-B-A2-F/9'-6"
(A)	AW 11+20.0	31.5 RT	15'-6"	SEE DETAIL	SEE DETAIL	N/A	70W, HPS, 208V, TYPE III, VSCO #M-B-A2-F/9'-6"
(A)	AW 10+89.0	31.1 RT	15'-6"	SEE DETAIL	SEE DETAIL	N/A	70W, HPS, 208V, TYPE III, VSCO #M-B-A2-F/9'-6"
(A)	AW 10+57.0	16.6 RT	15'-6"	SEE DETAIL	SEE DETAIL	N/A	70W, HPS, 208V, TYPE III, VSCO #M-B-A2-F/9'-6"
(A)	SF 10+72.0	16.0 RT	15'-6"	SEE DETAIL	SEE DETAIL	N/A	70W, HPS, 208V, TYPE III, VSCO #M-B-A2-F/9'-6"

* CONTRACTOR SHALL SUBMIT MANUFACTURER'S LUMINAIRE SPEC., SHOP DRAWINGS AND PHOTOMETRIC DATA FOR APPROVAL.
** RELOCATED LIGHT STANDARD

LEGEND



ABBREVIATIONS

ADOT&PF ALASKA DEPARTMENT OF TRANSPORTATION AND PUBLIC FACILITIES
 CBU CITY AND BOROUGH OF JUNEAU
 HPS HIGH PRESSURE SODIUM
 NEC NATIONAL ELECTRICAL CODE
 UL UNDERWRITERS LABORATORY

REV.	DATE	BY	CHKD.	APPROVALS	REVISION DESCRIPTION

DATE: DESIGNED: MAC
 DRAWN: TJS
 CHECKED: SMC
 APPROVED: [Signature]

Tetra Tech/KCM, Inc.
 230 South Franklin, Suite 204
 Juneau, Alaska 99801-1384
 907-586-9400 Fax: 907-483-9877



CITY AND BOROUGH OF JUNEAU, ALASKA
 MARINE WAY AND SOUTH FRANKLIN STREET INTERSECTION IMPROVEMENTS
 CONTRACT NO. ED1-189
 ILLUMINATION DETAILS

FILE NO: J440052
 PROJECT NO: 2070012
 DWG NO: E2
 SHEET: 18 OF 18

This drawing is full size when 22" x 34" or is reduced to half size when 11" x 17"