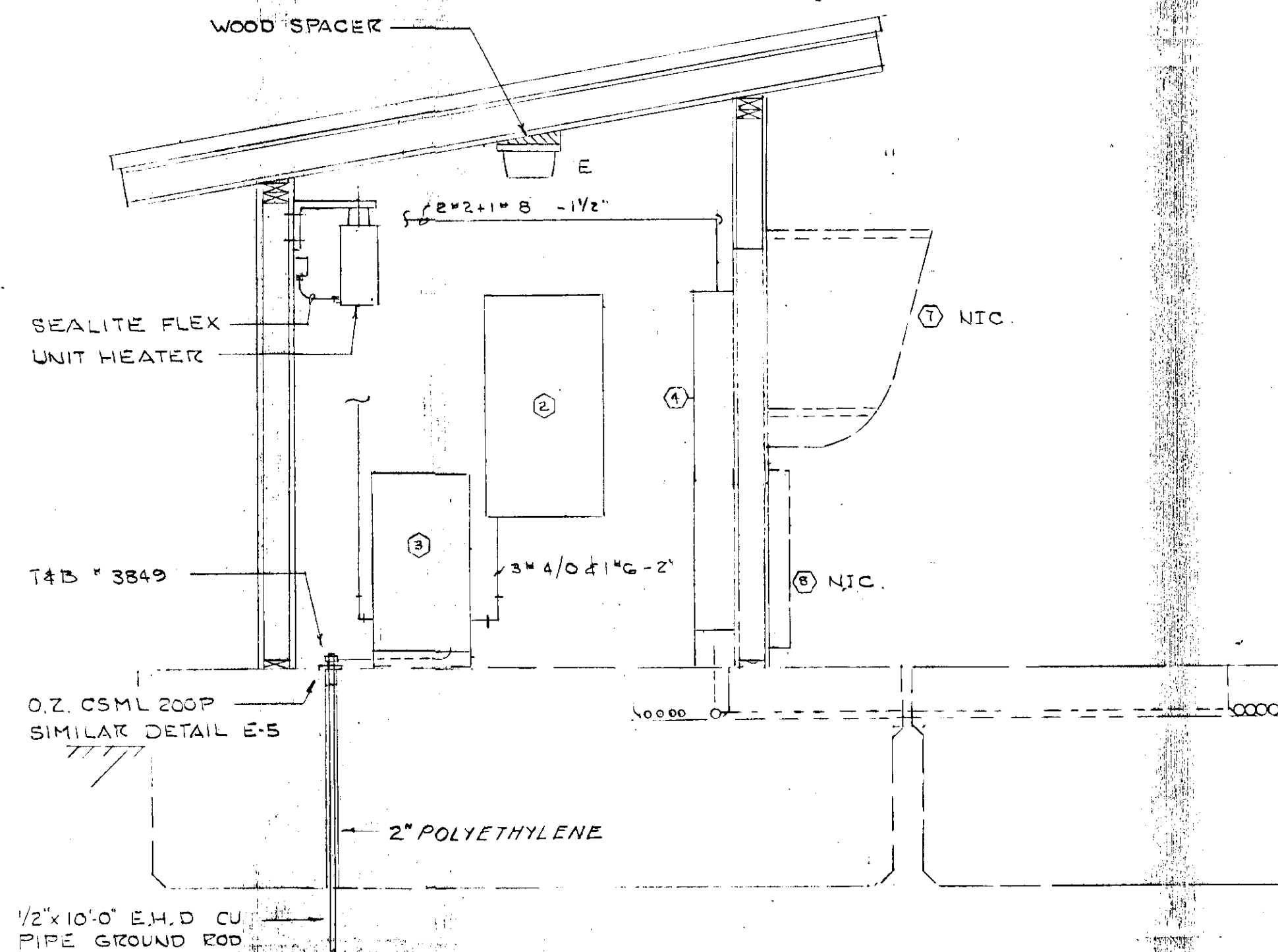
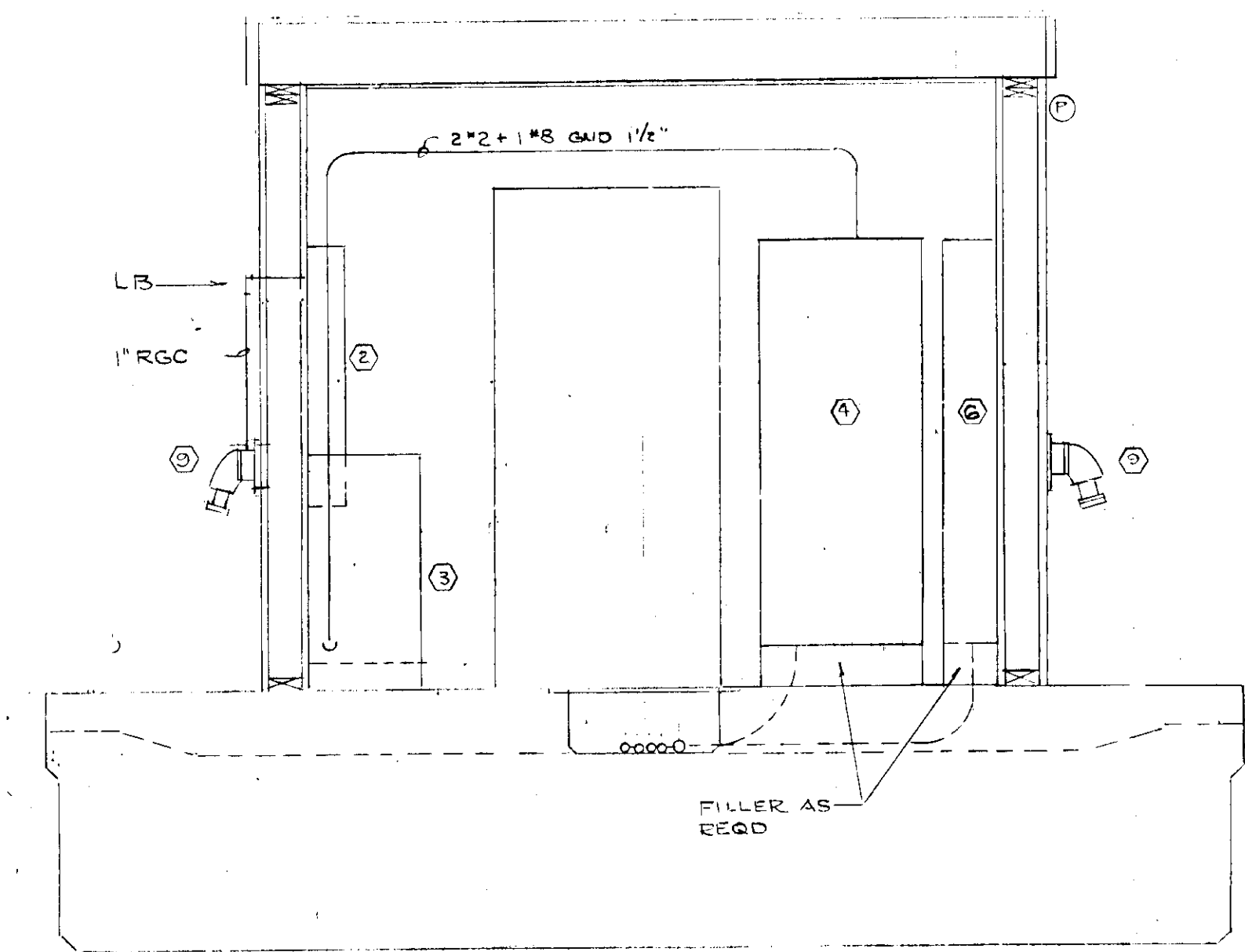


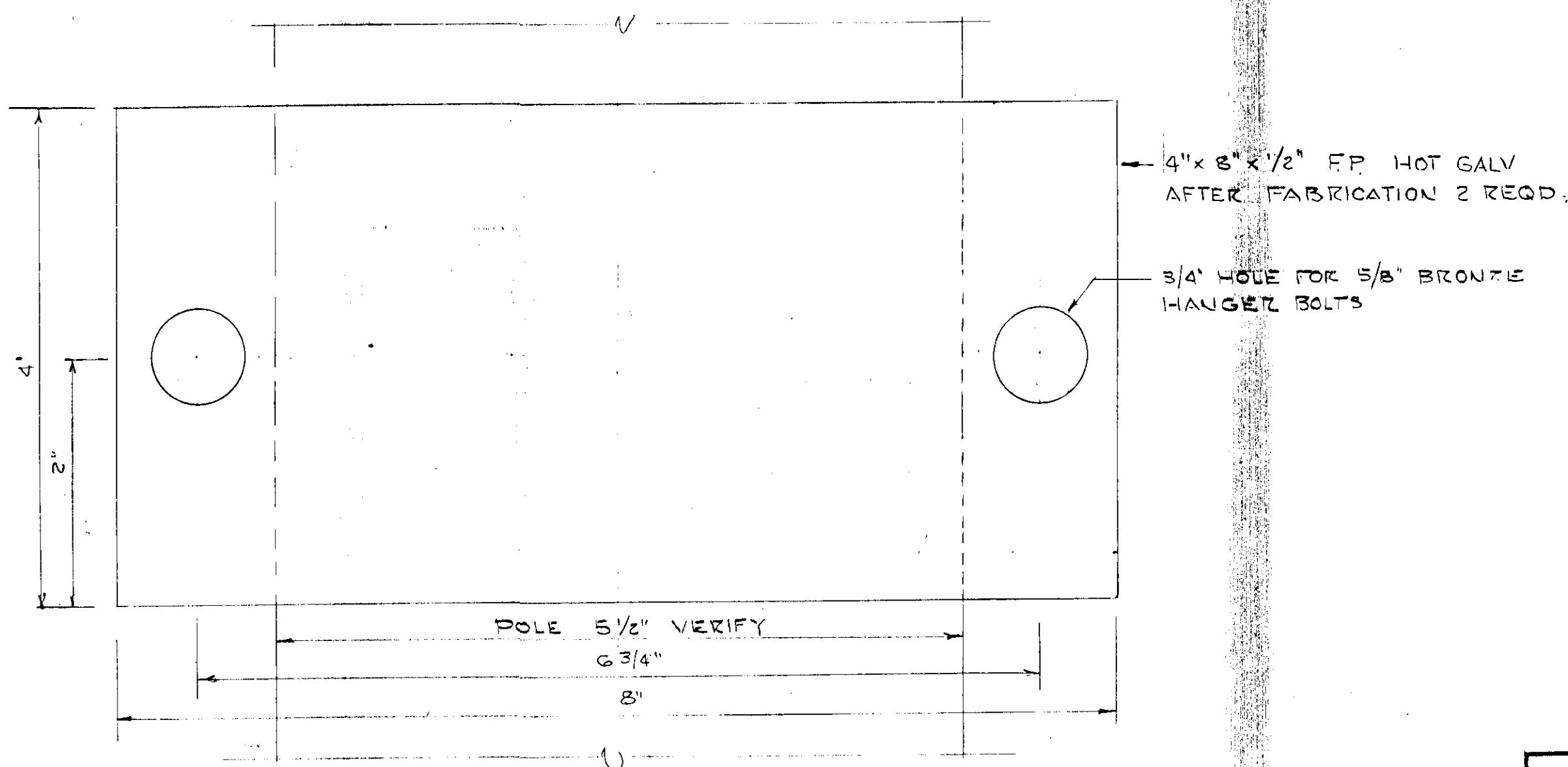
PLAN  
1/2" = 1'-0"



SECTION A-A  
1/2" = 1'-0"



SECTION B-B  
1/2" = 1'-0"




MOUNTING PLATE  
FULL SIZE

EQUIPMENT SCHEDULE			
ITEM	DESCRIPTION	QTY	REMARKS
1	NOT USED		
2	PANEL X 120/240V 1Ø SQD NQDD	1	
3	TRANSFORMER 37.5KVA 480-120/240V T-4	1	EPOXY ENCAPSULATED
4	PANEL P 277/480V 3Ø SQD I LINE	1	SEE E-G
5	NOT USED		
6	PANEL B	1	SEE E-G
7	TELP BOOTH BENNAR NAWMAN 5N855	NIC	
8	II TERMINAL SUPERIOR F2A 50PK	NIC	
9	RECP 60A 120/240 C-H AREA 6424	2	+3G
10	PLUG " C-H APJ 6485	2	DEL TO OFFICE

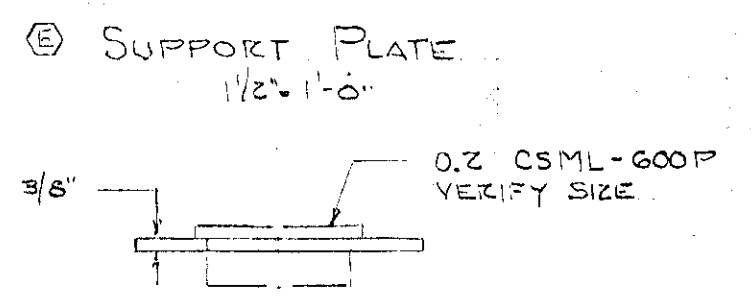
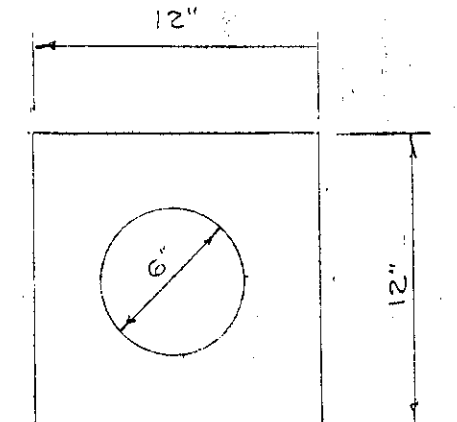
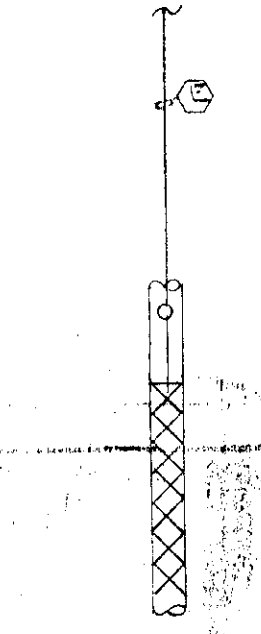
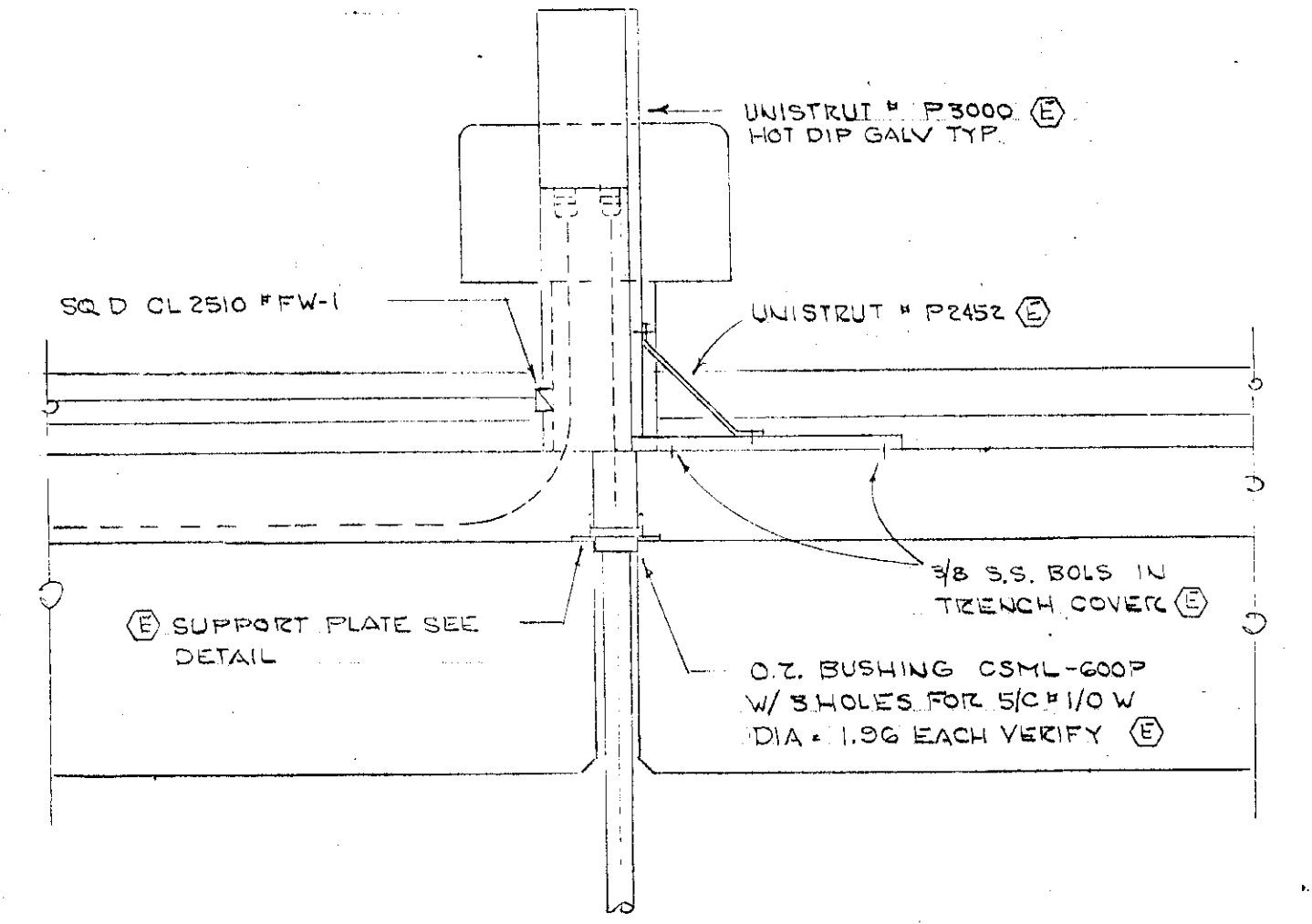
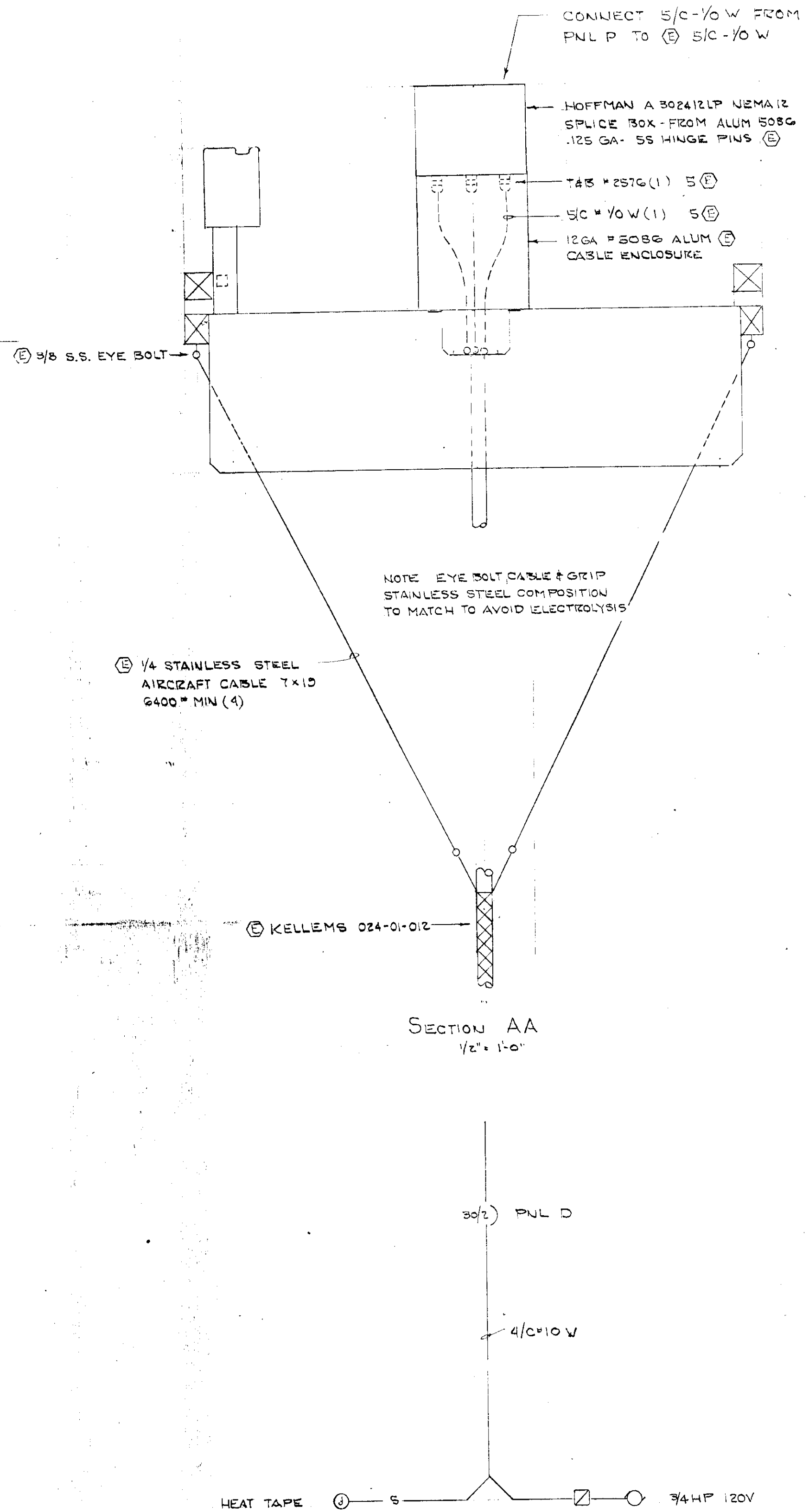
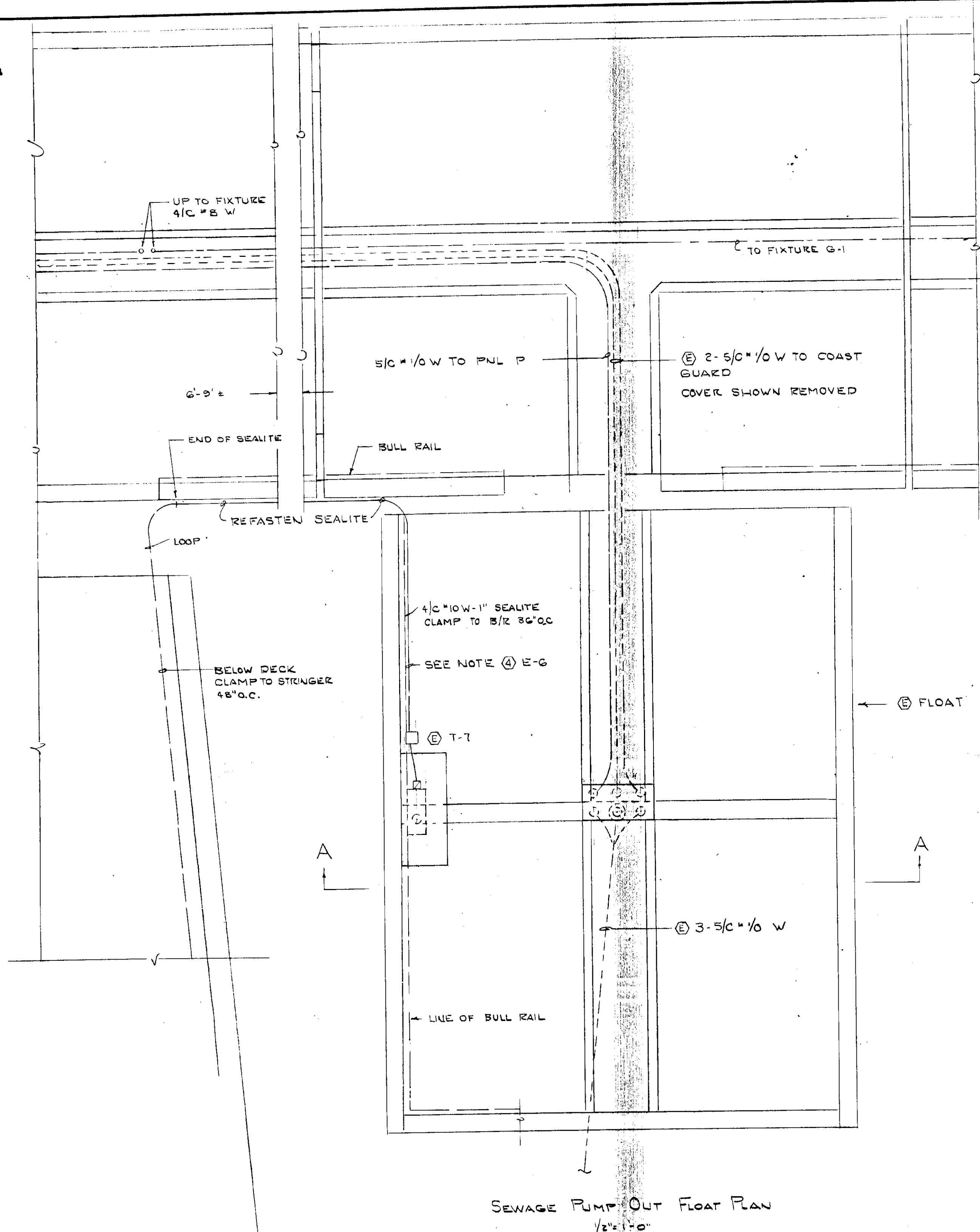
DO NOT SCALE THIS DRAWING - USE DIMENSIONS

STATE OF ALASKA  
DEPARTMENT OF TRANSPORTATION AND PUBLIC FACILITIES  
DESIGN AND CONSTRUCTION

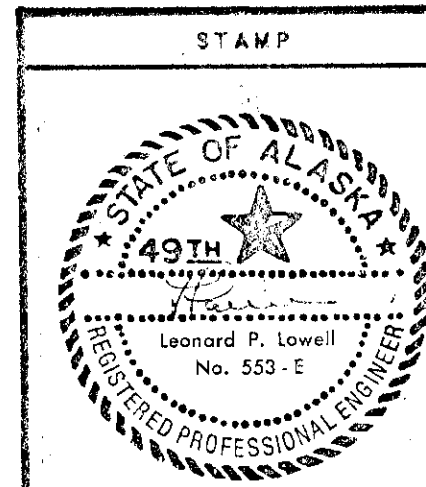
Don Statter Hbr. Ruke Bay, Alaska  
ELECTRICAL DETAILS







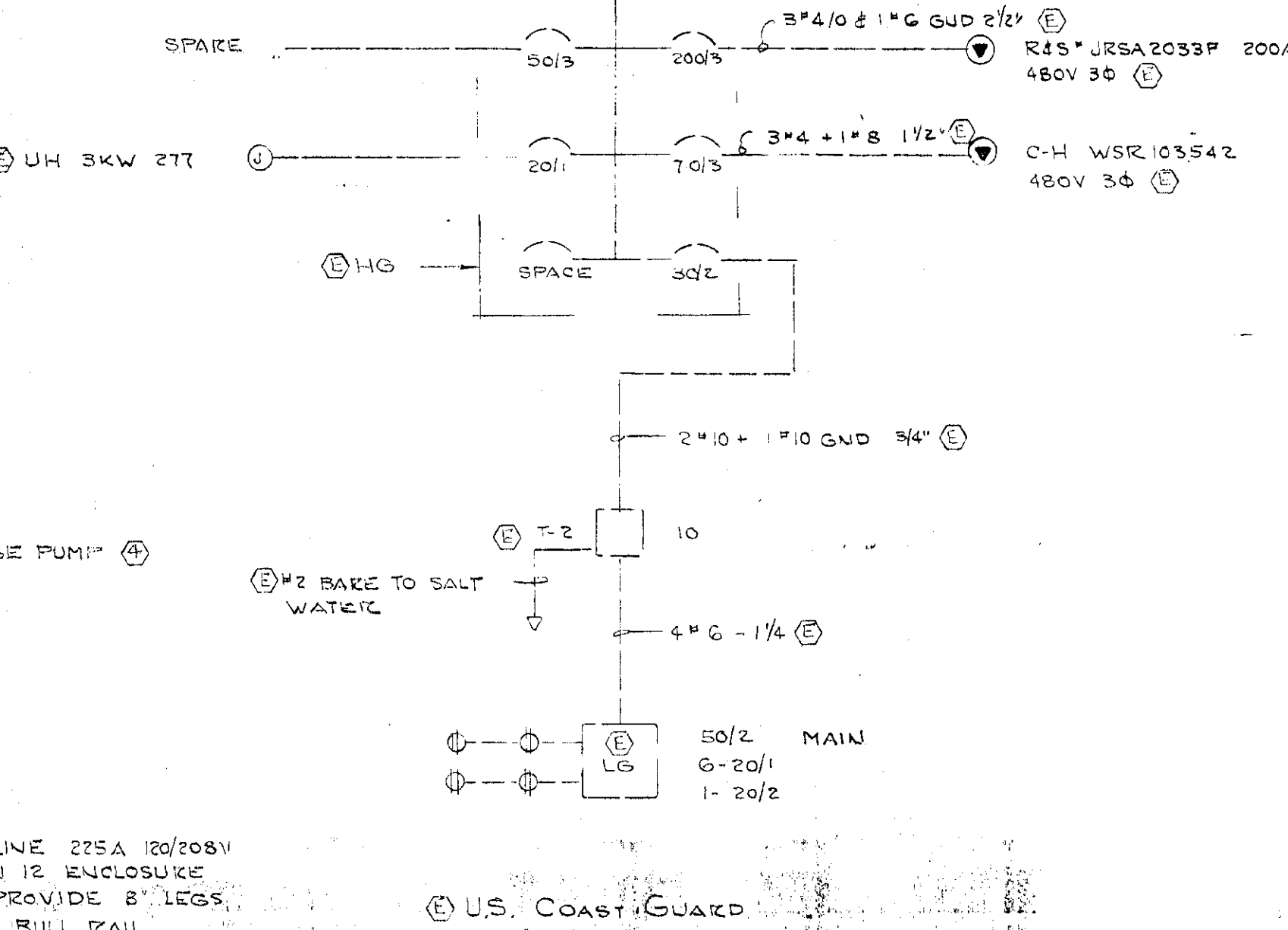
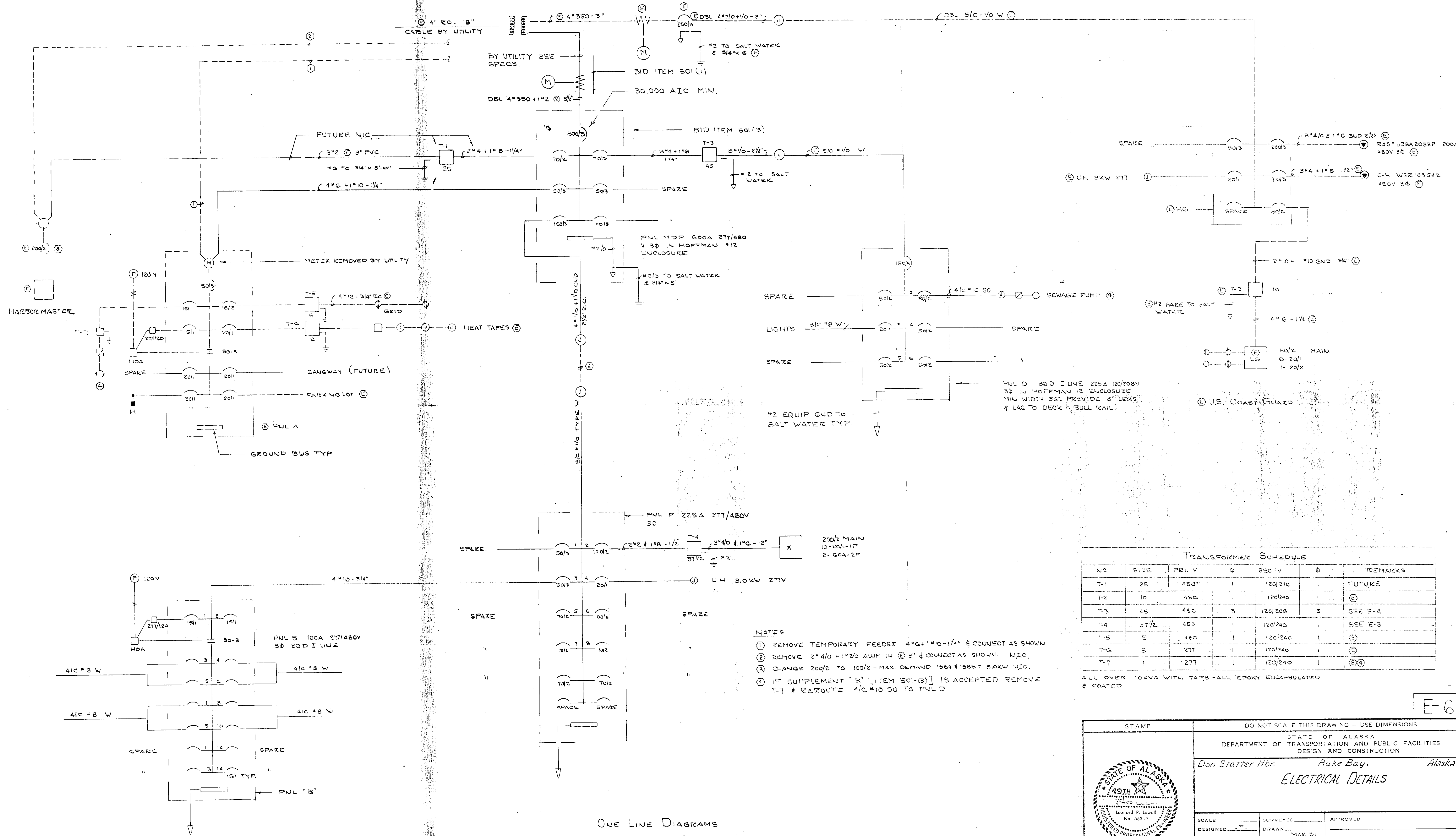
ONE LINE DIAGRAM NO SCALE



DO NOT SCALE THIS DRAWING - USE DIMENSIONS			
STATE OF ALASKA DEPARTMENT OF TRANSPORTATION AND PUBLIC FACILITIES			
Don Statter Hbr.		Ruke Bay, Alaska	
ELECTRICAL DETAILS			
DESIGNED	CHECKED	DRAWN LPL	DATE MAR 01
PROJECT NUMBER 70400		SHEET 6 OF 10	

E-5

75 KVA 7.2/12.47KV TO 277/480V 50 4W



PUL D SDD I LINE 225A 120/208V 30 IN HOFFMAN 12 ENCLOSURE MIN WIDTH 36. PROVIDE 8 LEGS & LAG TO DECK & BULL RAIL.

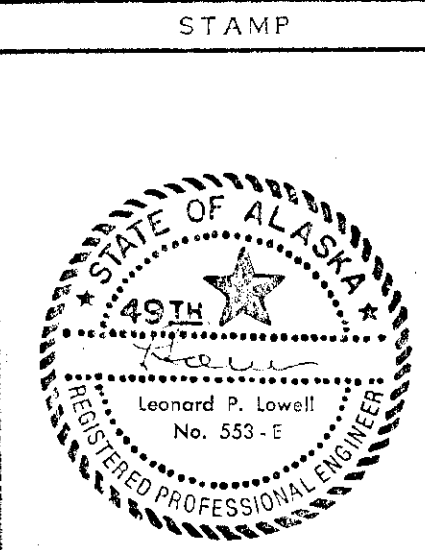
U.S. COAST GUARD

- NOTES**
- REMOVE TEMPORARY FEEDER 4" 4/0 + 1" 10-1/4 & CONNECT AS SHOWN
  - REMOVE 2" 4/0 + 1" 2/0 ALUM IN (E) 3" & CONNECT AS SHOWN. N.I.C.
  - CHANGE 200/2 TO 100/2 - MAX. DEMAND 1984 & 1985 = 8.0KW N.I.C.
  - IF SUPPLEMENT "B" [ITEM 501-3] IS ACCEPTED REMOVE T-7 & REROUTE 4" 4/0 SO TO PUL D

TRANSFORMER SCHEDULE						
NO	SIZE	PR. V	Ø	SEC V	Ø	REMARKS
T-1	25	480	1	120/240	1	FUTURE
T-2	10	480	1	120/240	1	(E)
T-3	45	480	3	120/208	3	SEE E-4
T-4	37 1/2	480	1	120/240	1	SEE E-3
T-5	5	480	1	120/240	1	(E)
T-6	5	277	1	120/240	1	(E)
T-7	1	277	1	120/240	1	(E)(4)

ALL OVER 10KVA WITH TAPS - ALL EPOXY ENCAPSULATED & COATED

ONE LINE DIAGRAMS  
NO SCALE



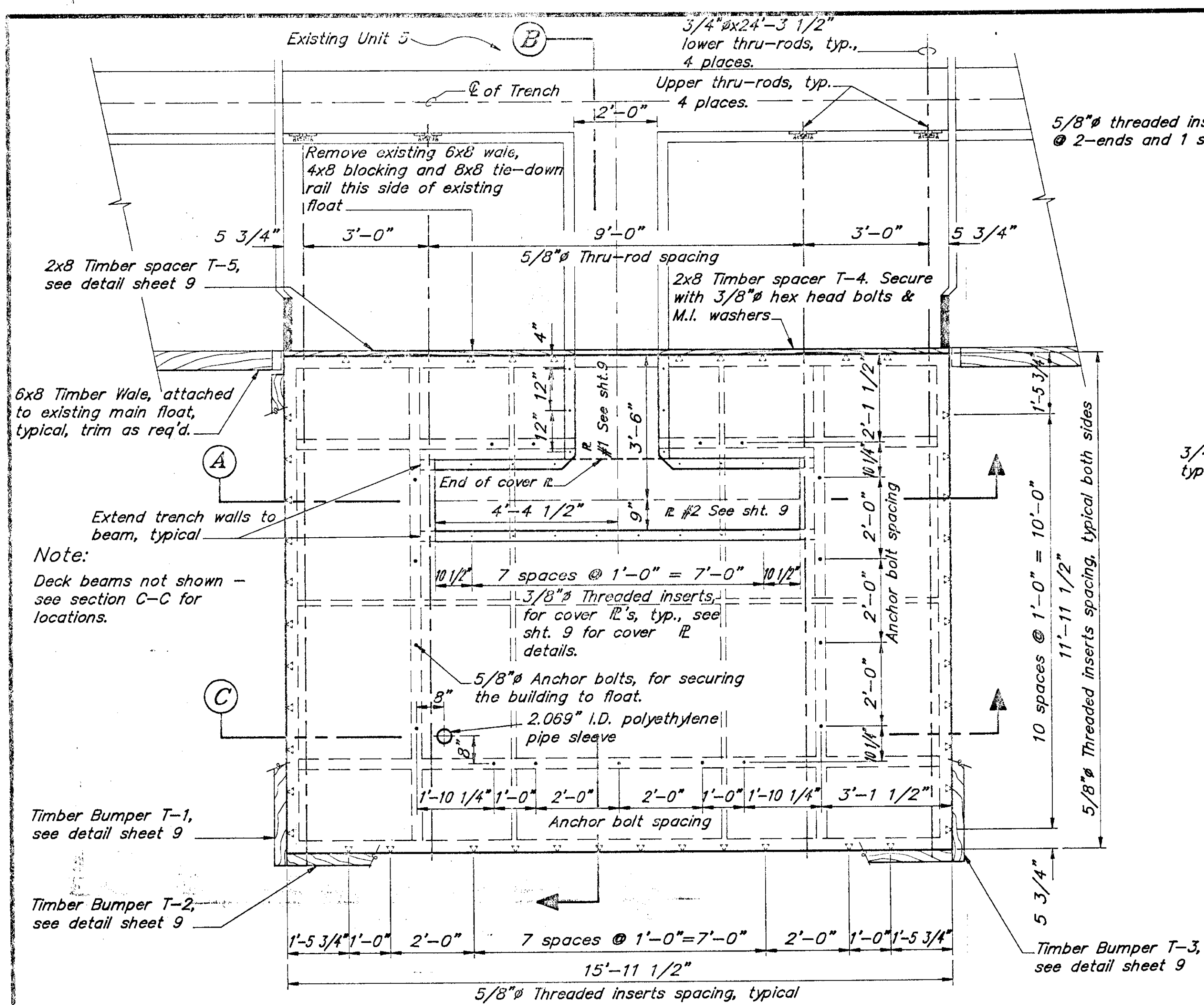
DO NOT SCALE THIS DRAWING - USE DIMENSIONS

STATE OF ALASKA  
DEPARTMENT OF TRANSPORTATION AND PUBLIC FACILITIES  
DESIGN AND CONSTRUCTION

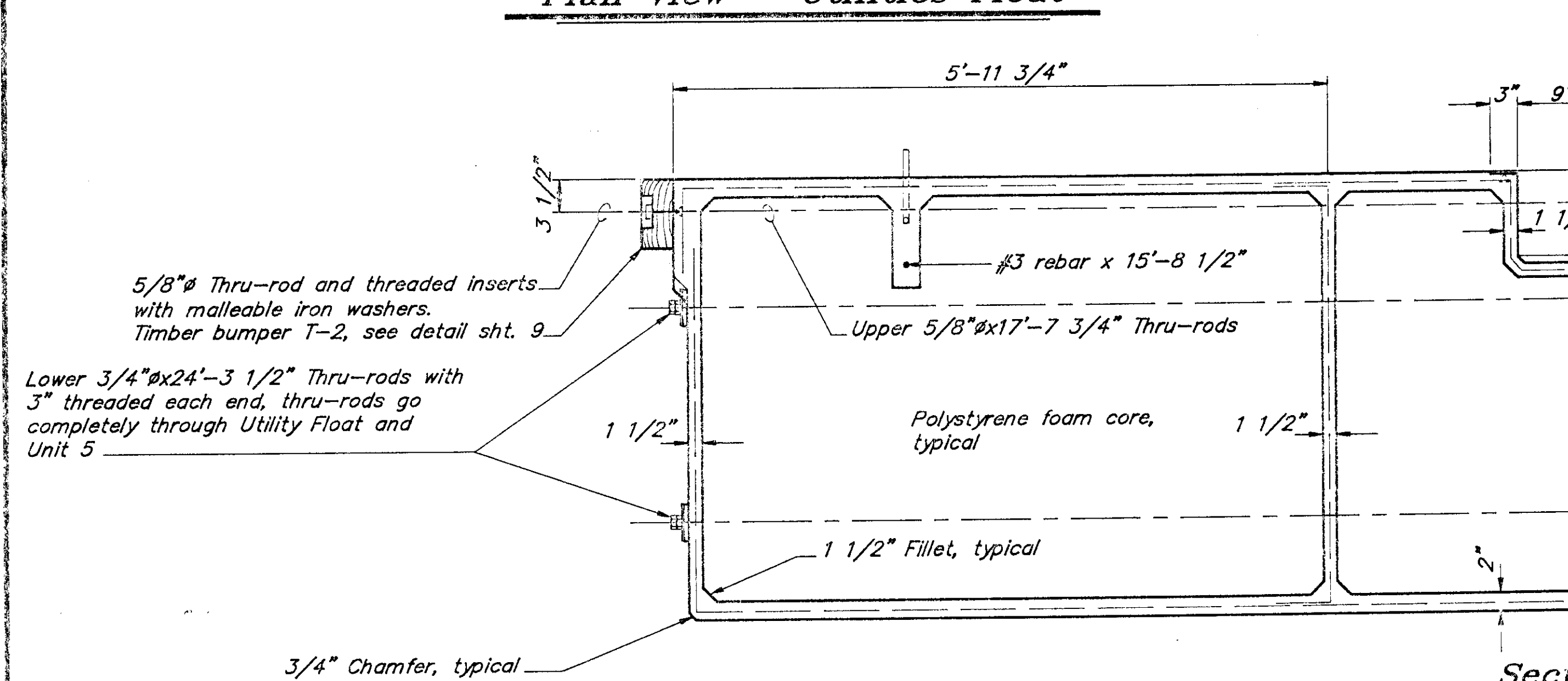
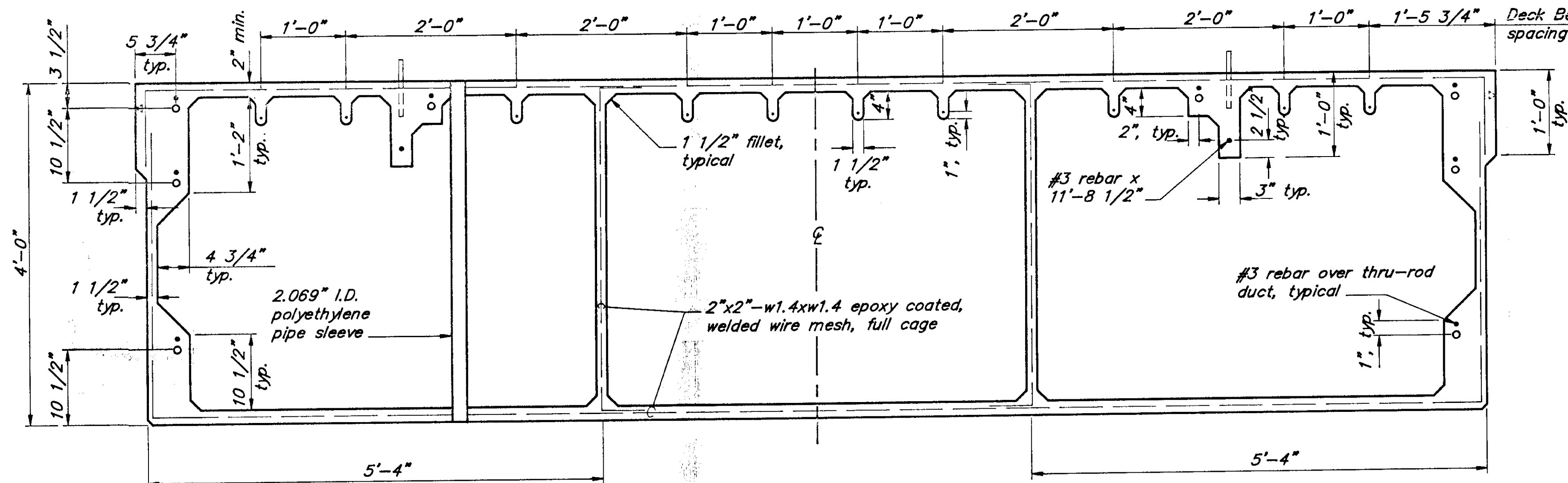
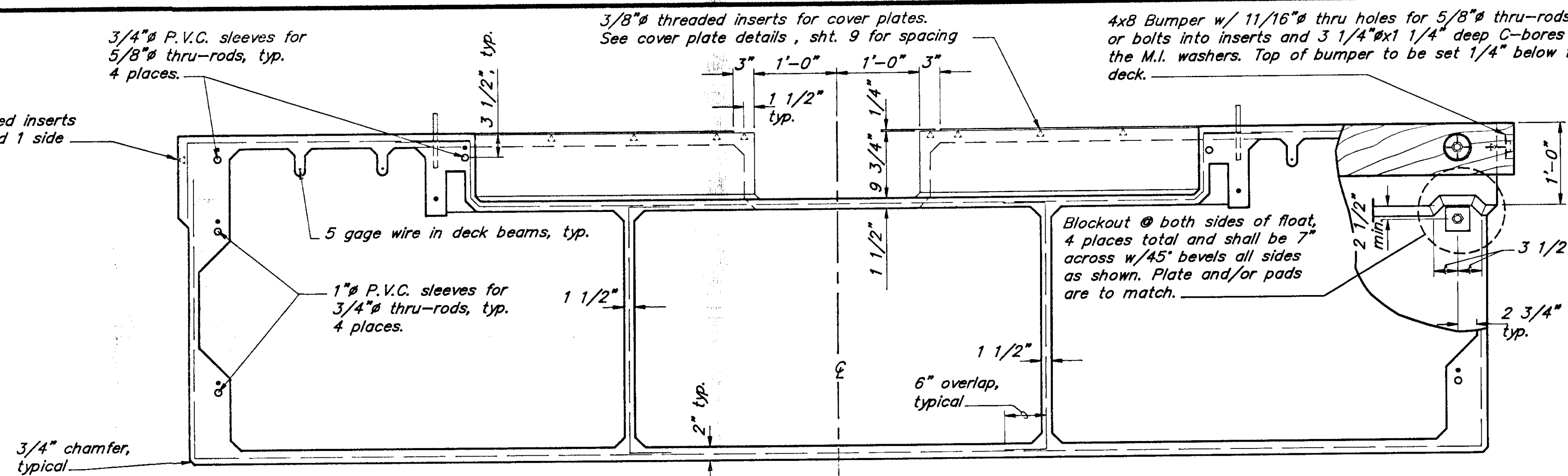
Don Statter Hbr. Auke Bay, Alaska  
**ELECTRICAL DETAILS**

SCALE: LFL	SURVEYED:	APPROVED:
DESIGNED: LFL	DRAWN: MAX S.	
CHECKED:	DATE:	
PROJECT NUMBER: 70400	SHEET 7 OF 10	

E-6



Plan View - Utilities Float

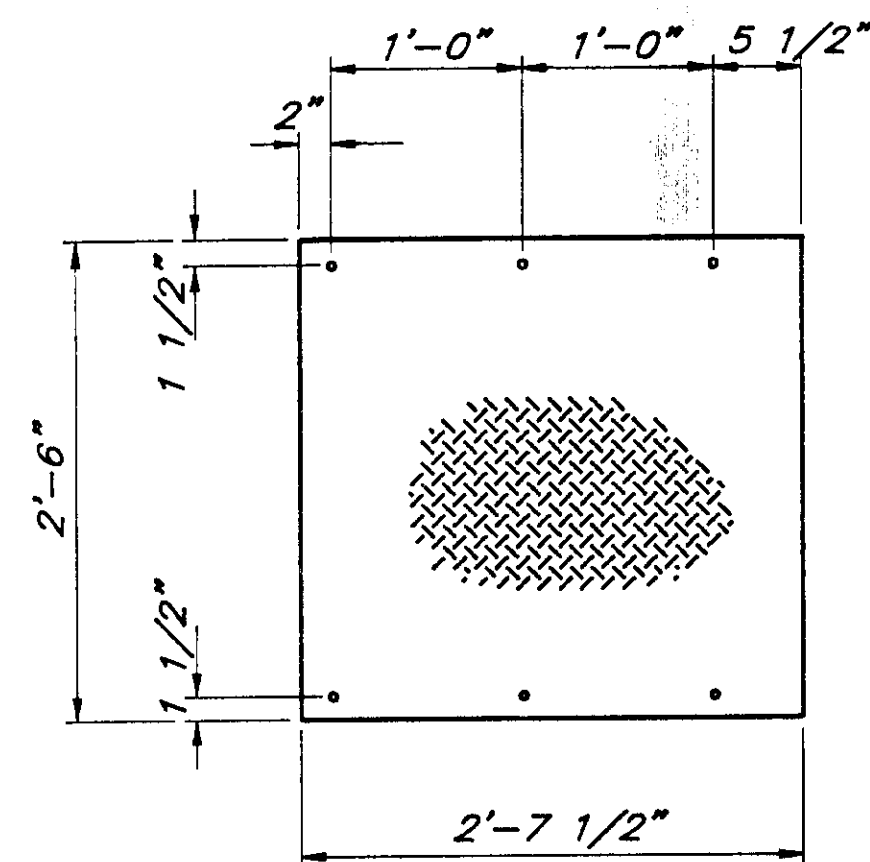


Notes :

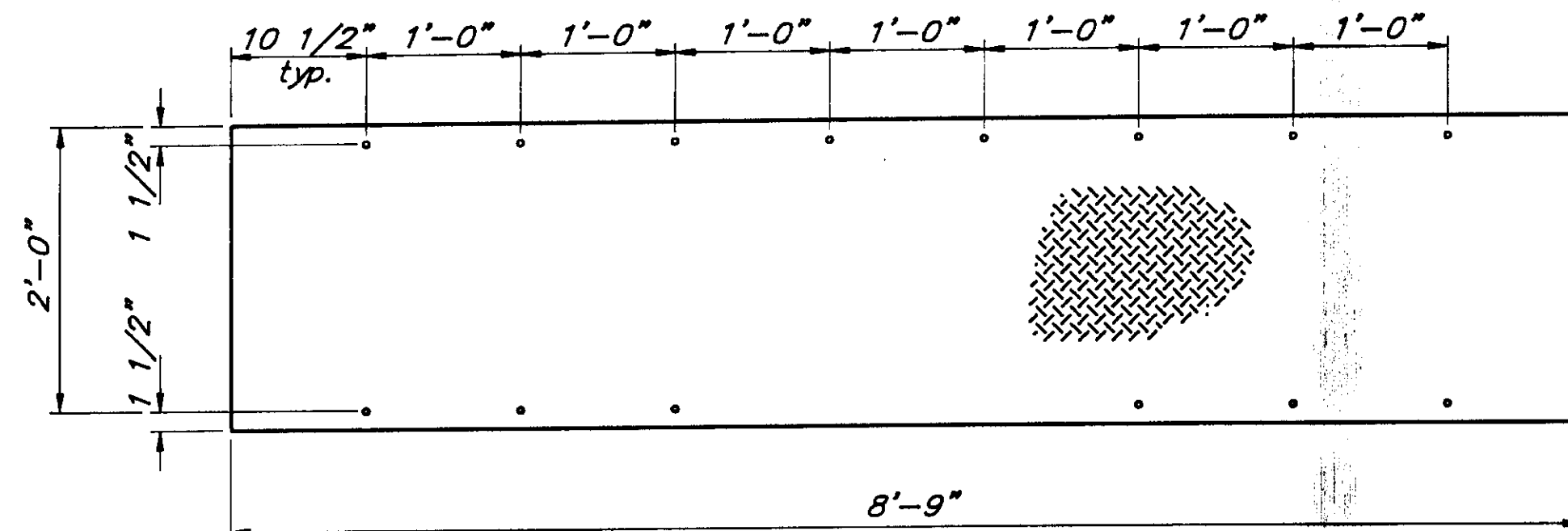
1. All threaded inserts this sheet to be stainless steel.
2. See sheet 10 for Utilities Float Building details.
3. Design freeboard = 16", include 4000 lbs. in freeboard calculations for building weight.

**Note :**

Utilities float coverplates to be made from 6061-T6 1/4" aluminum checker plate. Provide with 1/2" holes and countersunk for 3/8" stainless steel flathead screws.

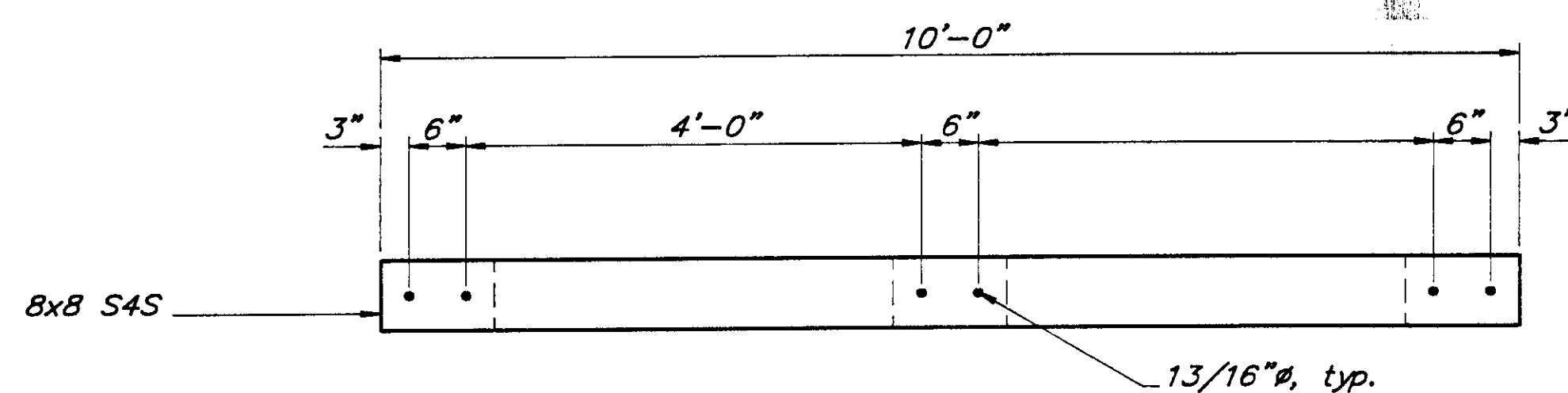


**Plate No. 1**

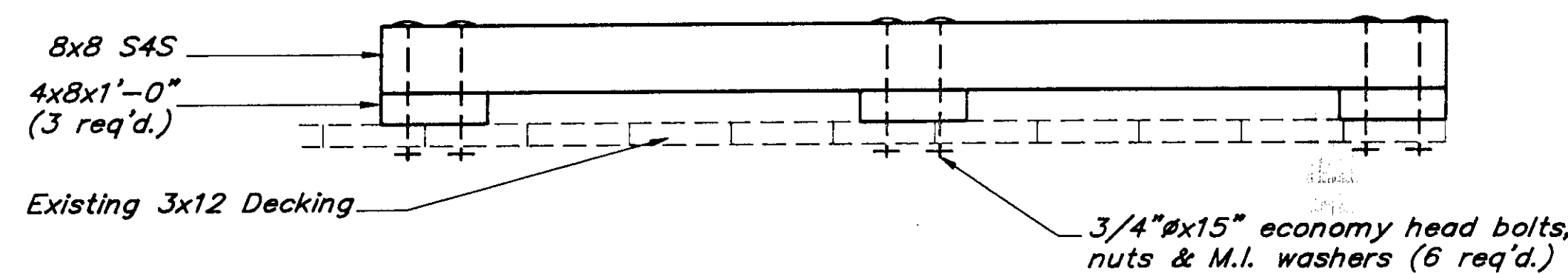


**Plate No. 2**

**Utilities Float Cover Plates**



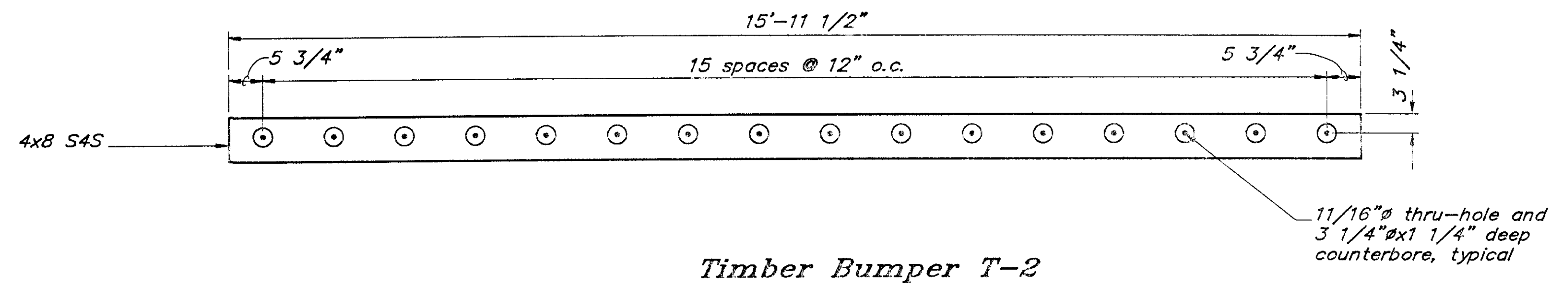
**Plan**



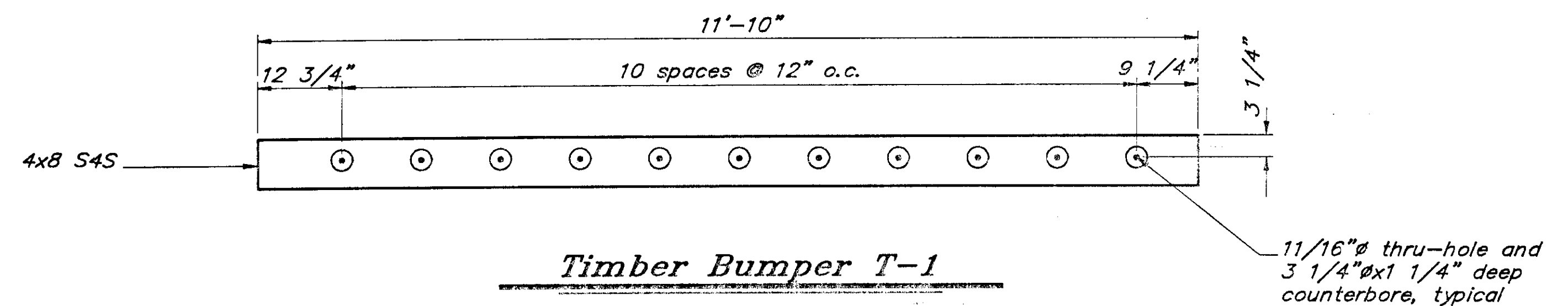
**Elevation**

**Approach Wheelguard**

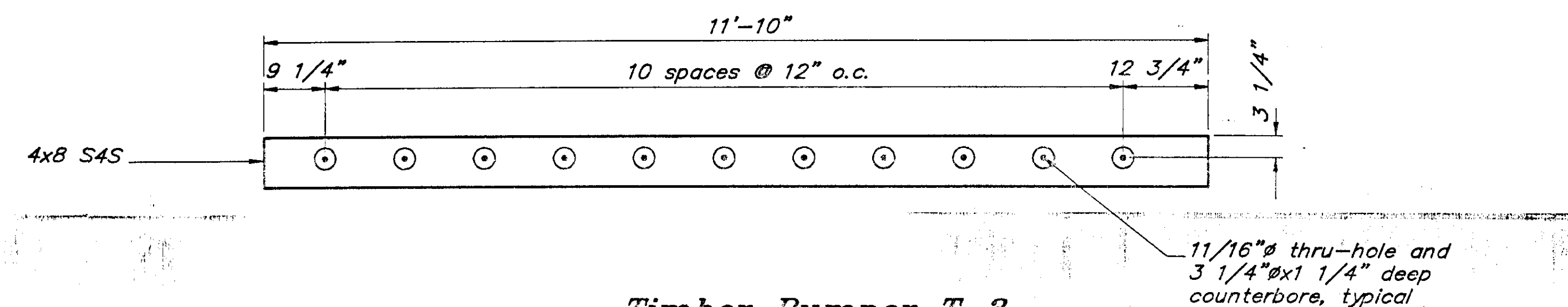
**Note :** Locate wheelguard on existing approach in front of utility cabinets, as directed by Engineer.



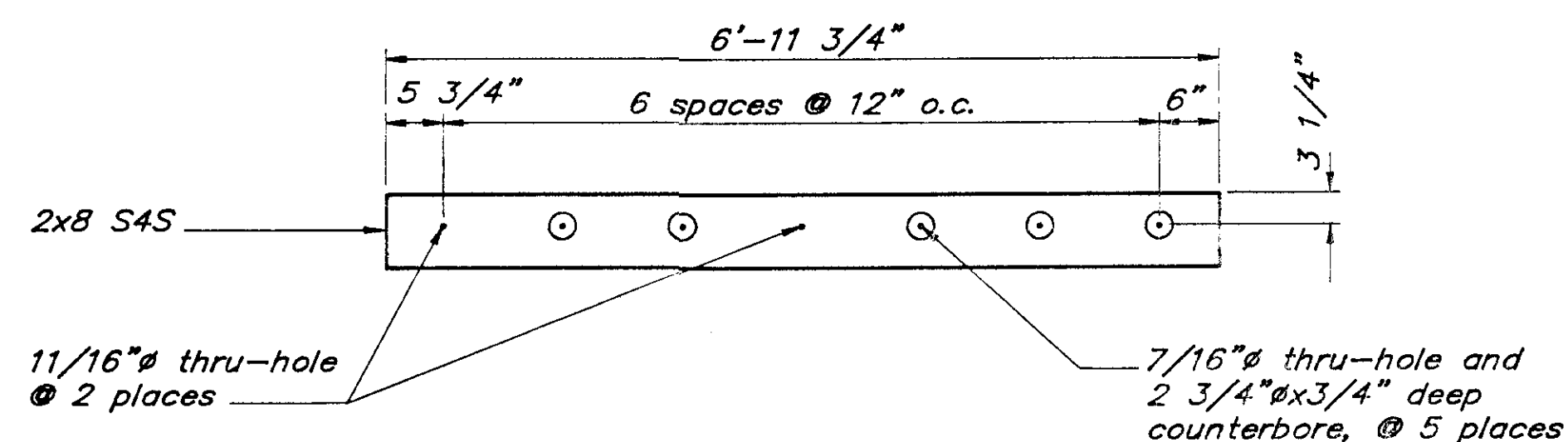
**Timber Bumper T-2**



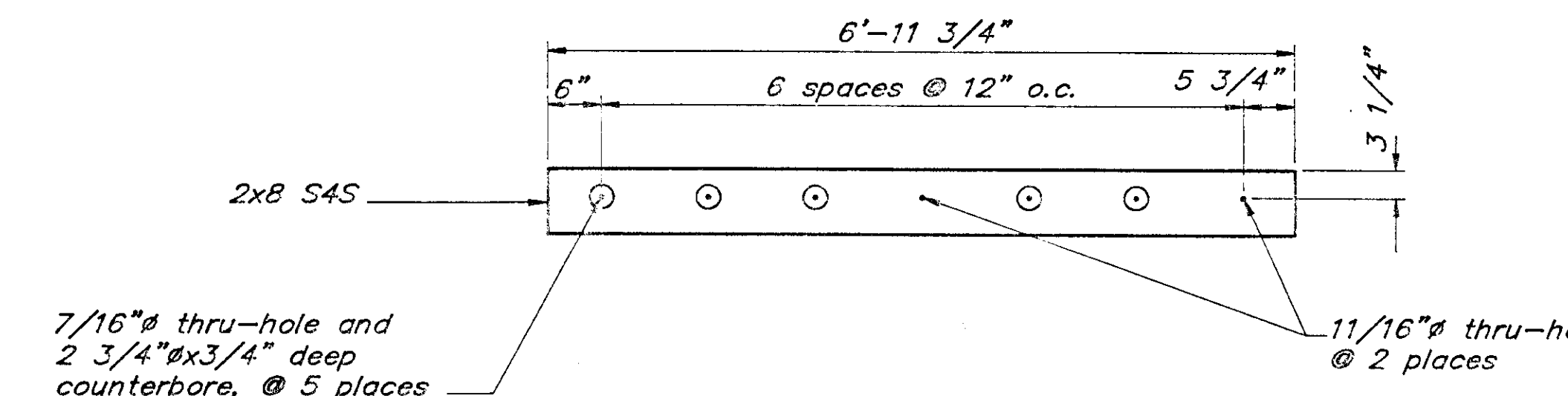
**Timber Bumper T-1**



**Timber Bumper T-3**



**Timber Spacer T-4**



**Timber Spacer T-5**

**Utilities Float Bumpers & Spacers**

BY:	DATE:	DESCRIPTION OF CHANGE:

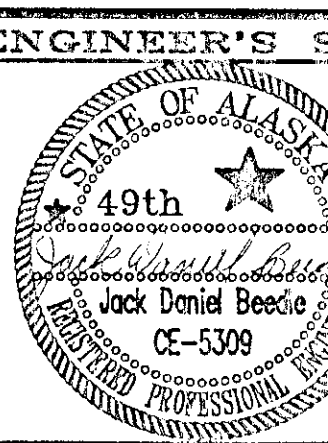
STATE OF ALASKA  
DEPARTMENT OF TRANSPORTATION  
AND PUBLIC FACILITIES  
SOUTHEAST REGION DESIGN & CONSTRUCTION

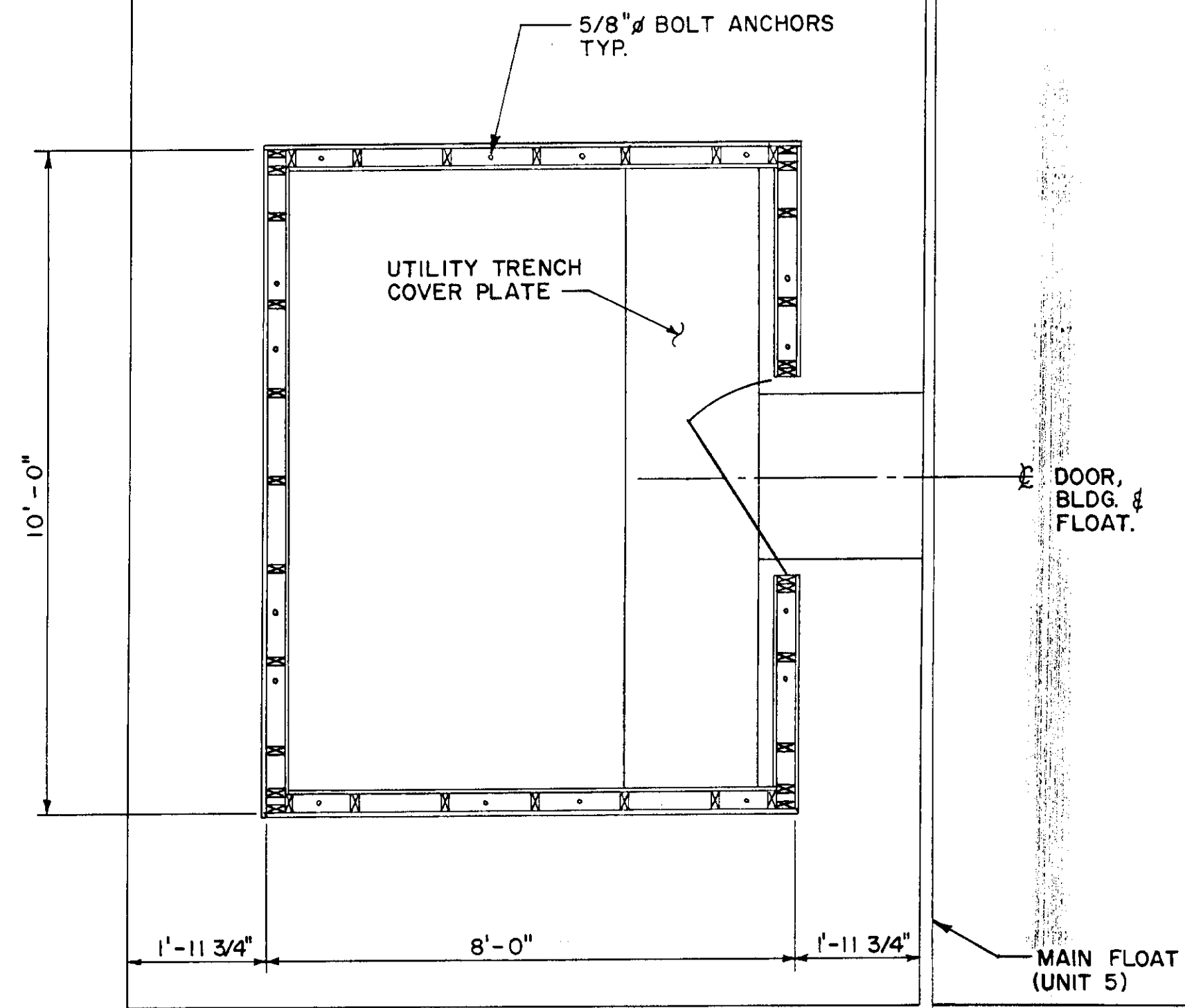
Juneau

Don Statter Harbor

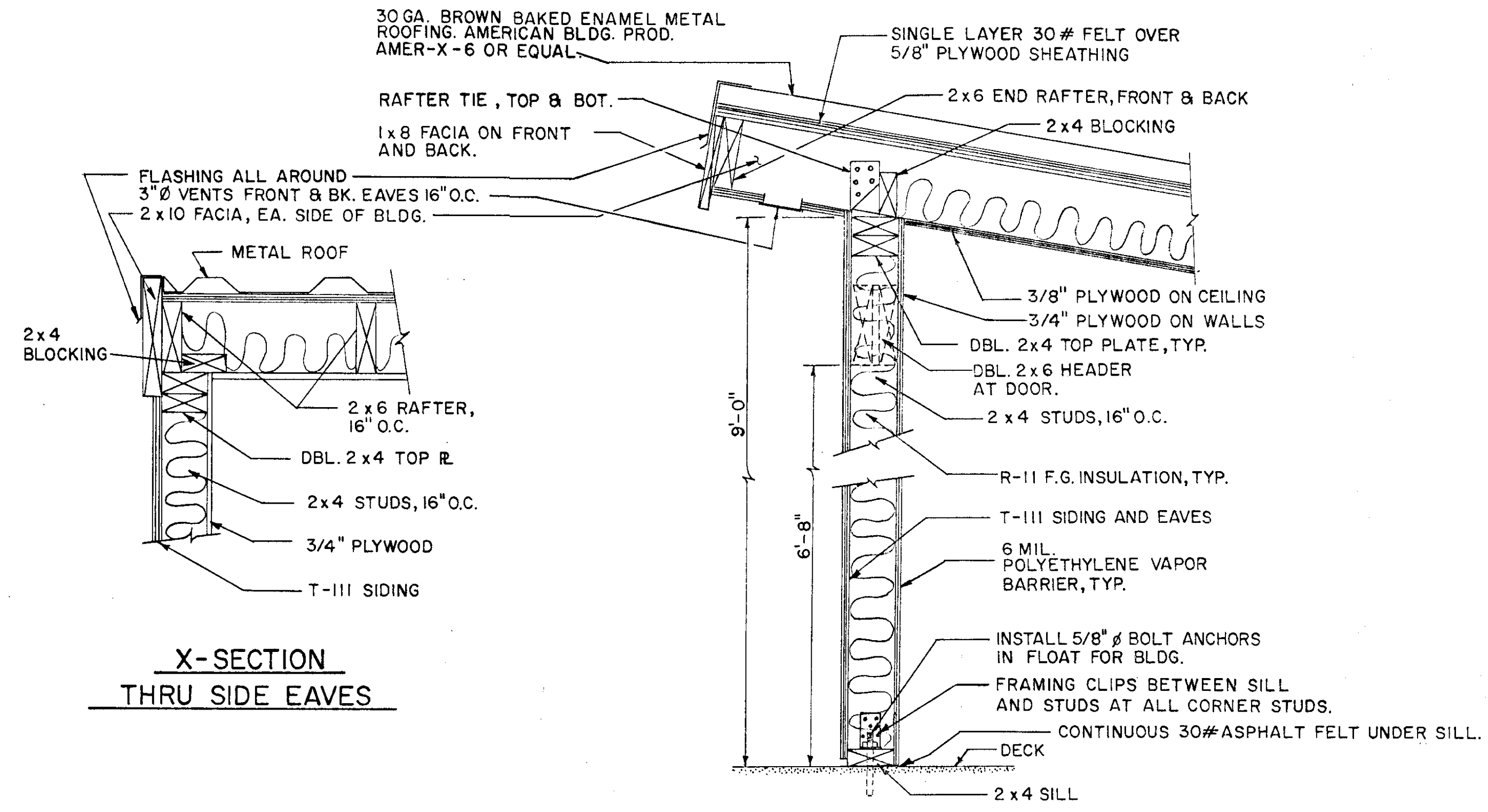
**Utilities Float Miscellaneous Details**

DESIGNED BY: J.D. Beedle	PROJECT No. 70400
DRAWN BY: AutoCAD / BWB	DATE: March 1991
CHECKED BY: J.D. Beedle	SHEET 9 OF 10



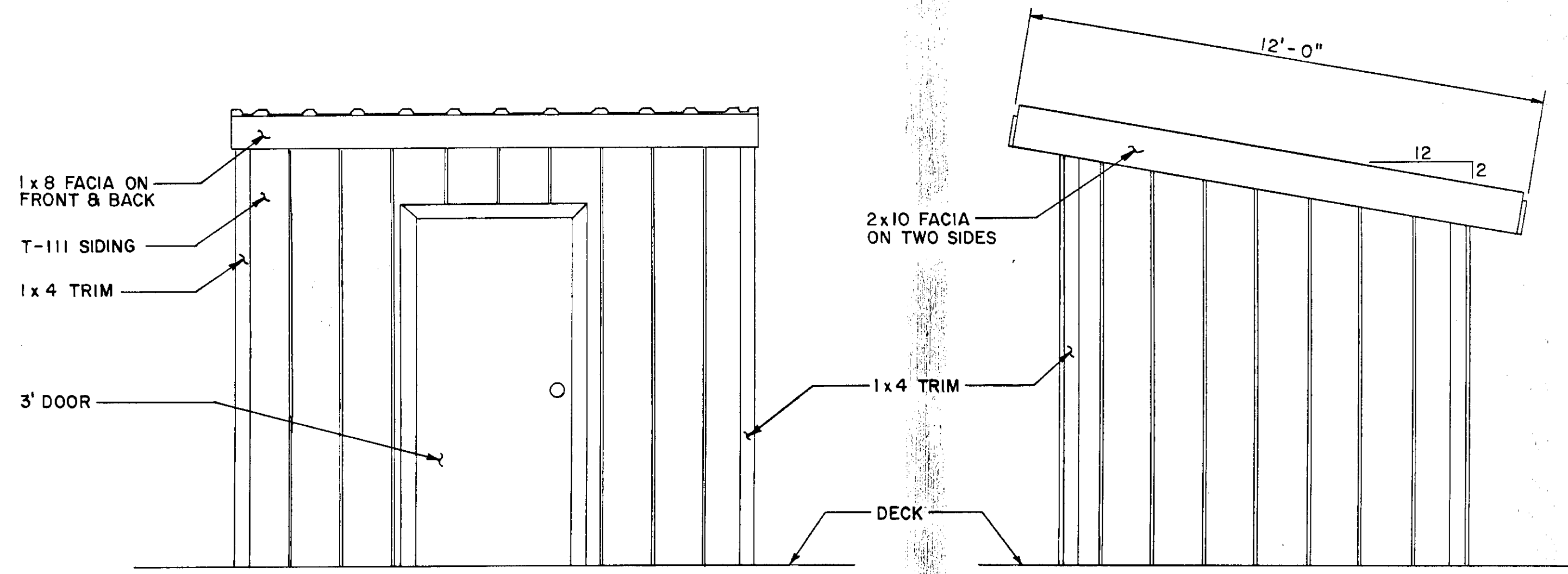


PLAN VIEW  
UTILITIES BUILDING



X-SECTION  
THRU SIDE EAVES

TYP. WALL SECTION



FRONT

SIDE

UTILITIES BUILDING

STAMP		DO NOT SCALE THIS DRAWING - USE DIMENSIONS	
STATE OF ALASKA DEPARTMENT OF TRANSPORTATION AND PUBLIC FACILITIES			
DON STATTER HBR.		AUKE BAY, ALA.	
<i>UTILITIES BUILDING</i>			
DESIGNED J.D.B.	CHECKED _____	DRAWN W.A.	DATE 1-91
PROJECT NUMBER 70400	SHEET 10		OF 10