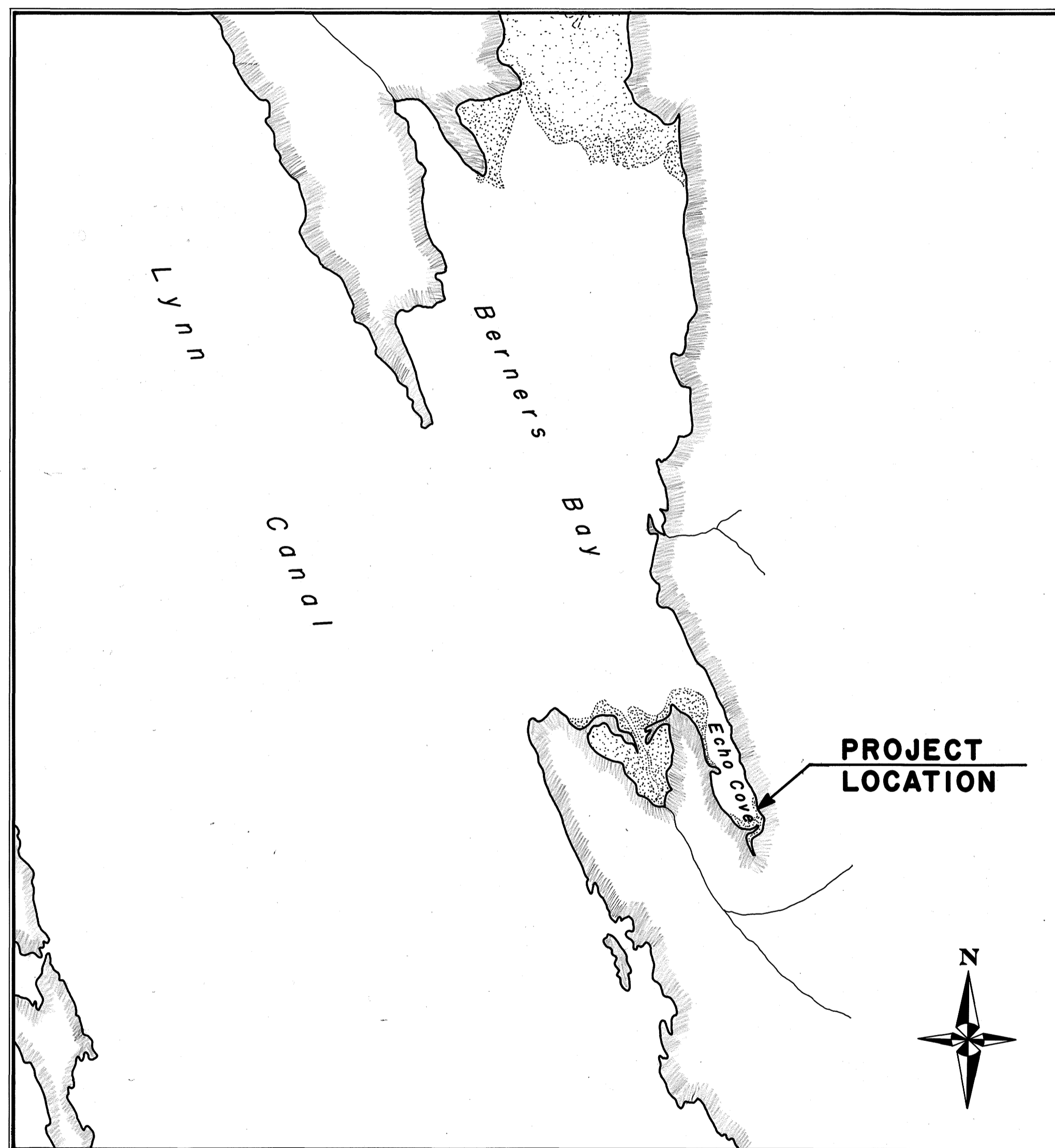


JUNEAU ECHO COVE LAUNCH RAMP

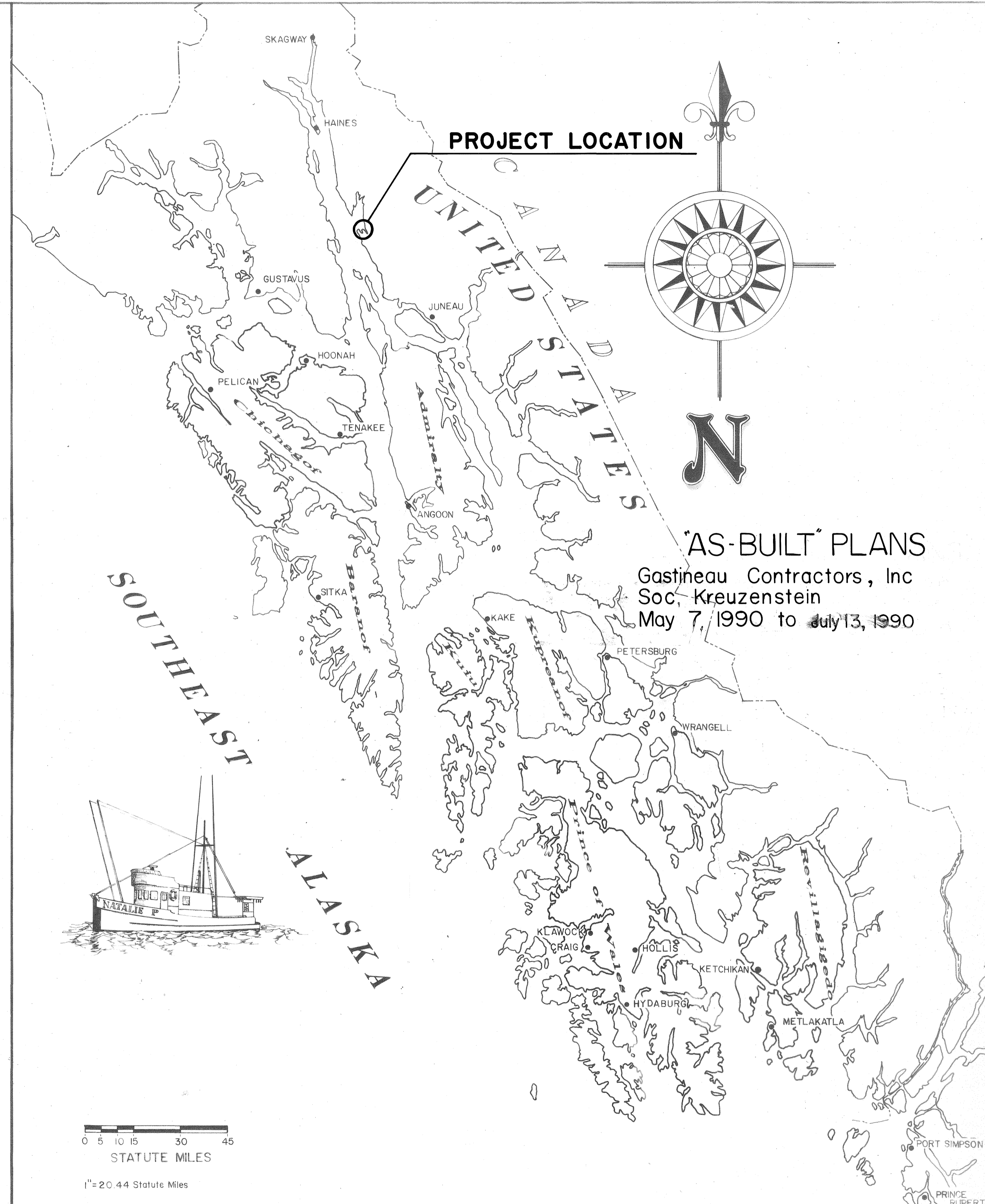
PROJECT No. 69716



DESIGNED & CONSTRUCTED FOR
DEPARTMENT OF FISH & GAME
DIVISION OF SPORT FISHERIES.
"AN ANGLER FUNDED PROJECT."



VICINITY MAP



"AS-BUILT" PLANS
Gastineau Contractors, Inc
Soc. Kreuzenstein
May 7, 1990 to July 13, 1990

STATE
OF
ALASKA

DEPARTMENT OF TRANSPORTATION
& PUBLIC FACILITIES
S.E. REGION DESIGN & CONSTRUCTION

APPROVED

L. Dieckmeyer 12-7-89
Director S.E. D.&C. Date

Recommend
for Approval

J. Merrill 12-7-89
Design Chief Date

SHEET 1 of 10

INDEX TO SHEETS

1 TITLE SHEET	9 ONE-WAY ROAD	THE FOLLOWING STANDARD DRAWINGS APPLY TO THIS PROJECT:
2 ESTIMATE OF QUANTITIES	10 MISCELLANEOUS DETAILS	
3 PROJECT LAYOUT & SIGNING PLAN		D-01.01, D-04.10, F-01.01, S-00.00,
4 BOAT LAUNCH RAMP PROFILE & SECTIONS		S-05.00, & S-30.01
5 CONCRETE APRON DETAILS		
6 LAUNCH RAMP DETAILS		
7 LOWER PARKING AREA		
8 ACCESS ROAD & PARKING AREA		

**PROJECT &
FILE NO.**
69716
**ECHO COVE
LAUNCH RAMP**

1 of 10
JUNEAU, ALASKA

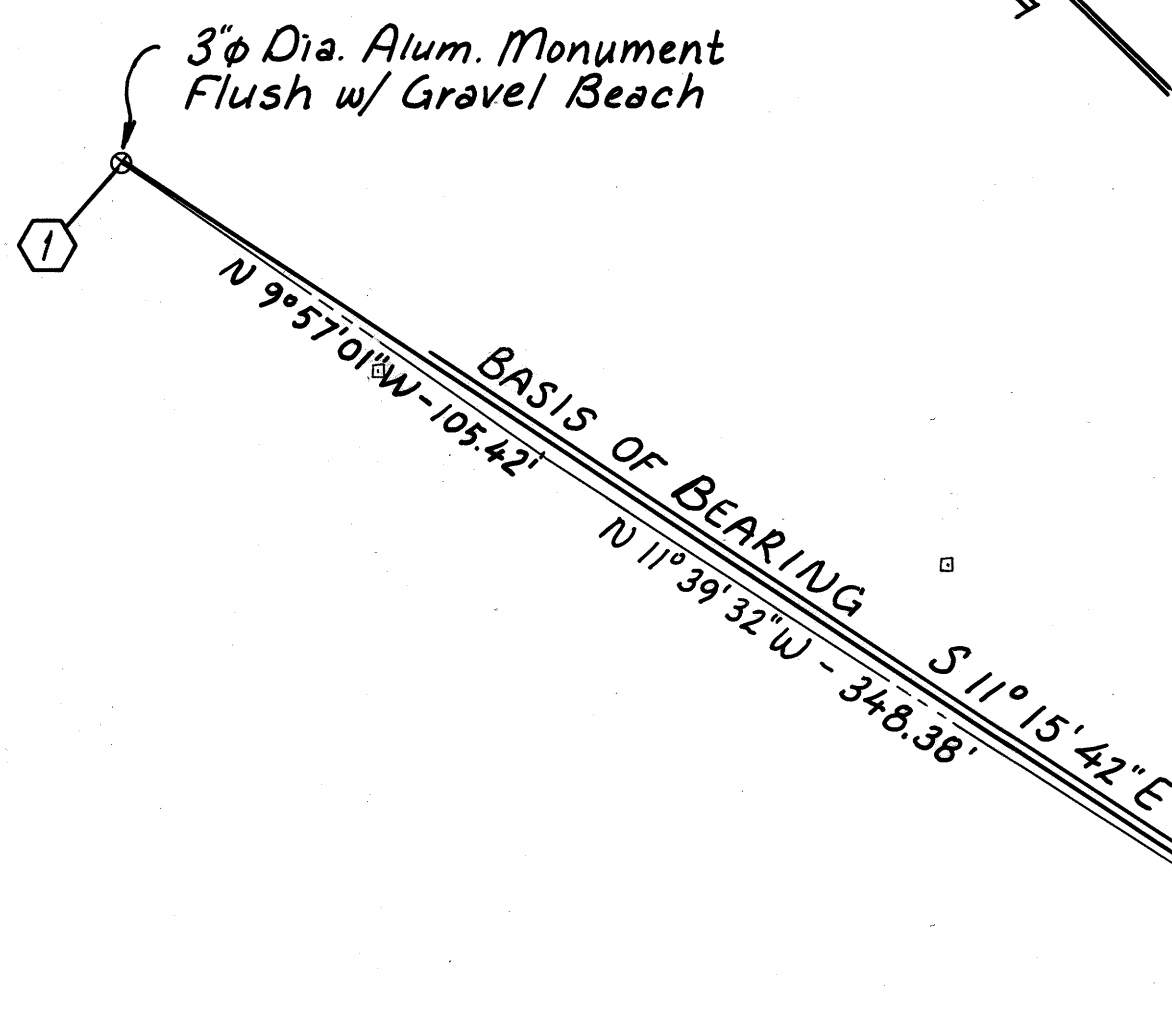
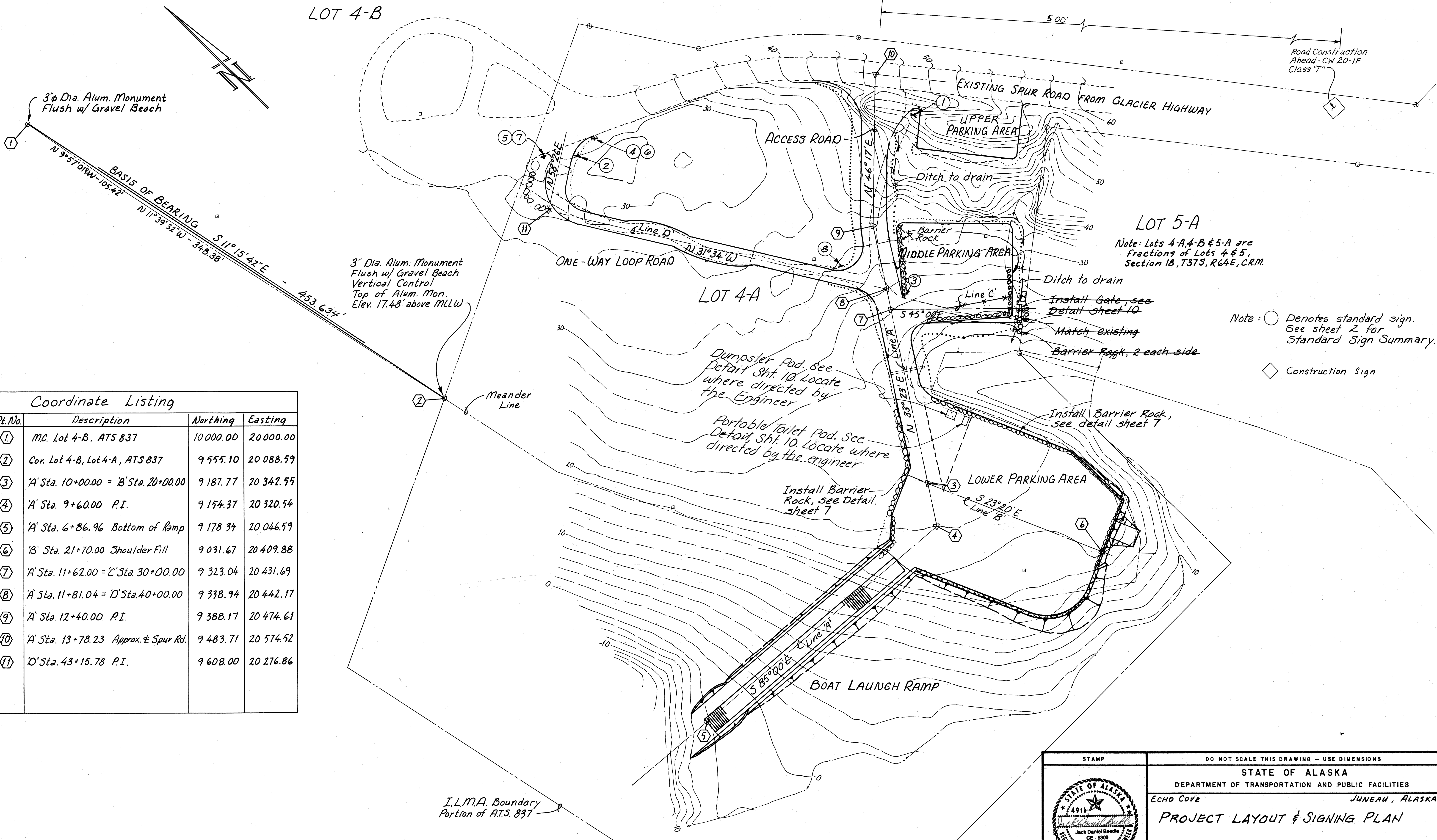
ESTIMATE OF QUANTITIES - BASIC BID				
ITEM NO.	ITEM	UNIT	QUANTITY	
110	Mobilization & Demobilization	L.S.	All Req'd.	
112	Construction Surveying by the Contractor	L.S.	All Req'd.	
121(1)	DBE Incentive	C.S.	All Req'd.	
201	Clearing & Grubbing	L.S.	All Req'd.	
202	Excavation	C.Y.	785	1897
203(A)	Borrow, Type "A"	TON	5,077	3713
203(2)	Crushed Aggregate Base Course	Ton	2,175	1963
203(3)	18" Corrugated Aluminum Pipe	L.F.	60	
203(4)	Lower Middle Parking Area Gate	L.S.	All Req'd.	
204	Filter Fabric	S.Y.	715	
205(1)	Riprap, Class I	C.Y.	450	411
205(2)	Riprap, Class II	C.Y.	500	416
205(3)	Barrier Rock	L.F.	650	765
312(1)	Construct Launching Ramp	L.S.	All Req'd.	
312(2)	Construct Concrete Pads	L.S.	All Req'd.	
615(1)	Standard Signs	S.F.	60	
202(A)	Remove Septic System	L.S.	All Req'd.	
203(B)	Parking Pull-Outs	L.S.	All Req'd.	

STANDARD SIGN SUMMARY													
NO.	STATION	OFFSET		CODE #	LEGEND	SIGN PANEL			POST		FACING TRAFFIC	REMARKS	
		L	R			SIZE	THICKNESS	SQ. FT.	NO.	SIZE			TYPE
1	"A" 13 + 45		36'	R1-1	STOP	36"x36"	0.08	9.0	1	2"x2"	P.S.T.	Eastbound	
2	"D" 43 + 48		12'	R1-1	STOP	36"x36"	0.08	9.0	1	2"x2"	P.S.T.	Eastbound	
3	"C" 30 + 15	10'		R1-1	STOP	36"x36"	0.08	9.0	1	2"x2"	P.S.T.	Northbound	
4	"D" 43 + 67		22'	R5-1	DO NOT ENTER	36"x36"	0.08	9.0	1	2"x2"	P.S.T.	Westbound	
5	"D" 43 + 46	15'		R5-1	DO NOT ENTER	36"x36"	0.08	9.0	1	2"x2"	P.S.T.	Westbound	
6	"D" 43 + 67		22'	R5-1A	WRONG WAY	36"x24"	0.08	6.0				Westbound	Mount below sign No. 4
7	"D" 43 + 46	15'		R5-1A	WRONG WAY	36"x24"	0.08	6.0				Westbound	Mount below sign No. 5
8	"D" 40 + 45		12'	R6-1(L)	ONE WAY	36"x12"	0.08	3.0	1	1 1/2"x1 1/2"	P.S.T.	Eastbound	

CONSTRUCTION		SIGN	
CODE NO.	LEGEND	FACING TRAFFIC	REMARKS
CW20-1F	ROAD CONSTRUCTION AHEAD	Northbound	Install on Glacier Highway Spur Road

BASIS OF ESTIMATE	
ITEM NO.	EST. FACTOR
203(1)	1.87 tons per cubic yard
203(2)	1.96 tons per cubic yard

STAMP		DO NOT SCALE THIS DRAWING - USE DIMENSIONS	
STATE OF ALASKA DEPARTMENT OF TRANSPORTATION AND PUBLIC FACILITIES			
ECHO COVE		JUNEAU, ALASKA	
ESTIMATE OF QUANTITIES			
DESIGNED _____	CHECKED <u>108</u>	DRAWN <u>RCS</u>	DATE <u>Dec. 1989</u>
PROJECT NUMBER <u>69716</u>	SHEET <u>2</u> OF <u>10</u>		



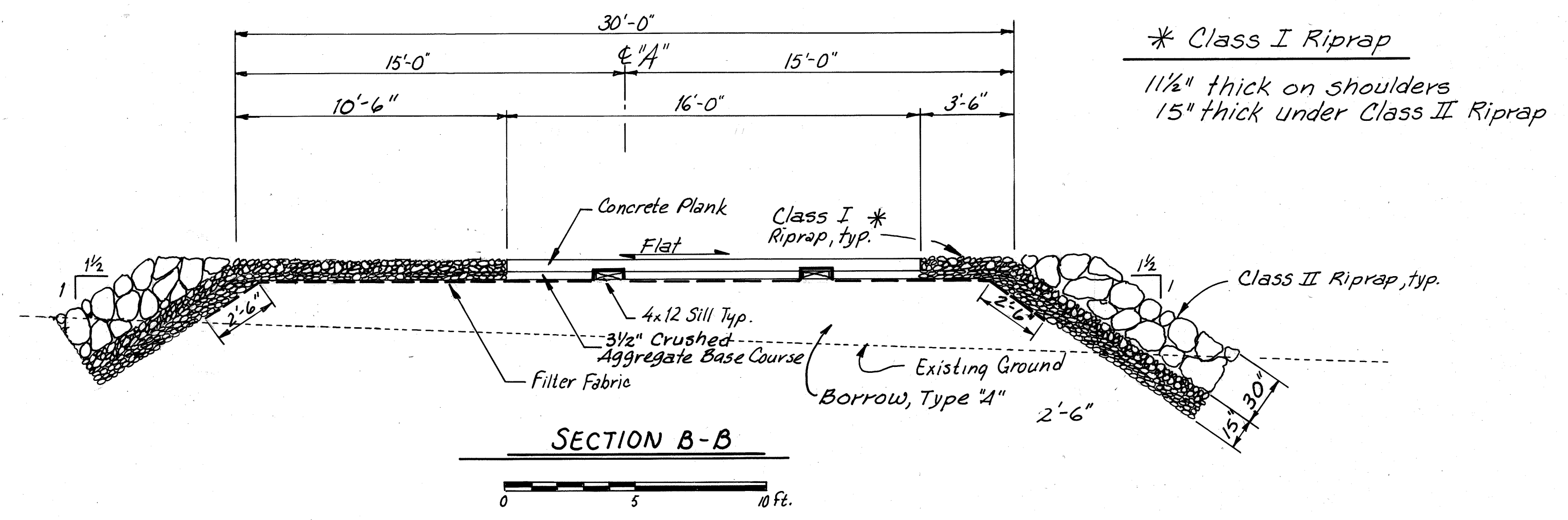
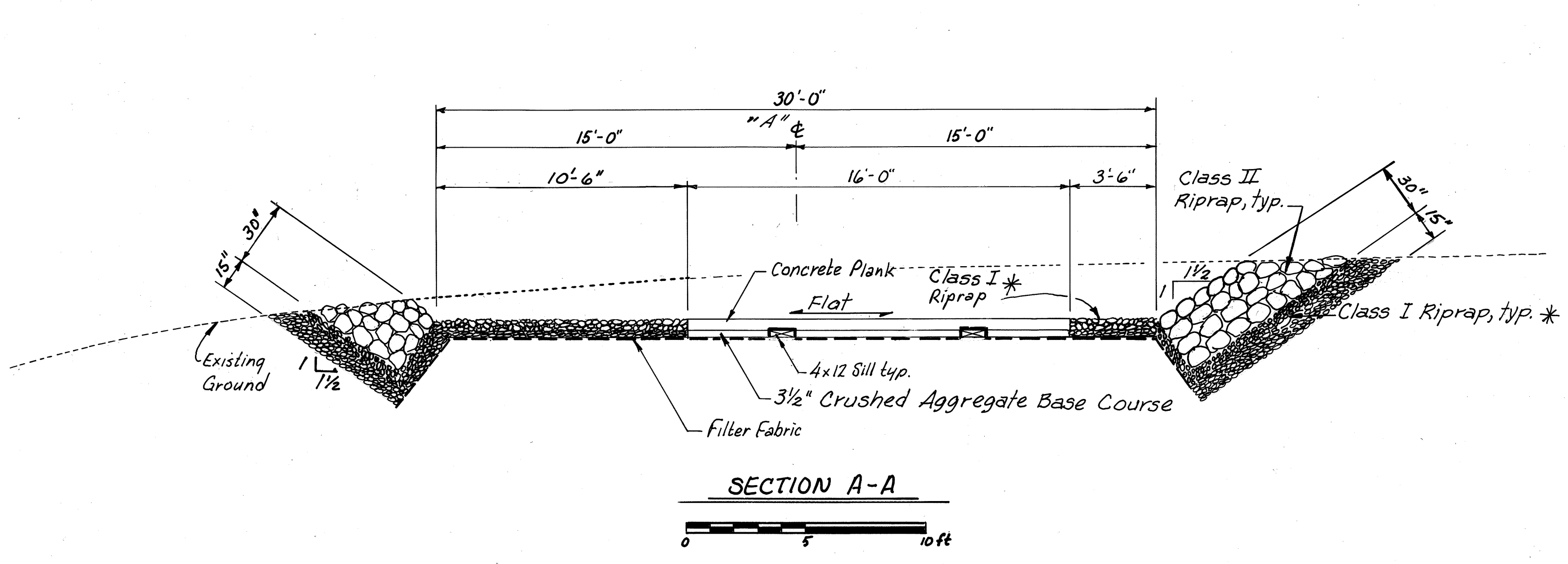
LOT 5-A
 Note: Lots 4-A, 4-B & 5-A are fractions of Lots 4 & 5, Section 18, T37S, R64E, CRM.

Note: ○ Denotes standard sign. See sheet 2 for Standard Sign Summary.
 ◇ Construction Sign

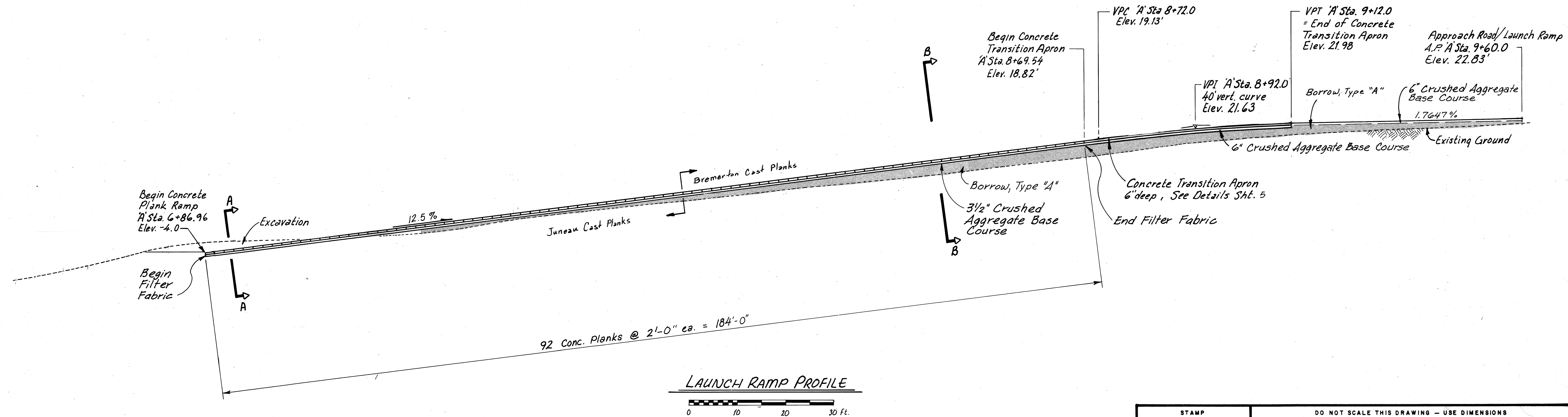
Coordinate Listing			
Pt. No.	Description	Northing	Easting
①	MC. Lot 4-B, ATS 837	10 000.00	20 000.00
②	Cor. Lot 4-B, Lot 4-A, ATS 837	9 555.10	20 088.59
③	'A' Sta. 10+00.00 = 'B' Sta. 20+00.00	9 187.77	20 342.55
④	'A' Sta. 9+60.00 P.I.	9 154.37	20 320.54
⑤	'A' Sta. 6+86.96 Bottom of Ramp	9 178.34	20 046.59
⑥	'B' Sta. 21+70.00 Shoulder Fill	9 031.67	20 409.88
⑦	'A' Sta. 11+62.00 = 'C' Sta. 30+00.00	9 323.04	20 431.69
⑧	'A' Sta. 11+81.04 = 'D' Sta. 40+00.00	9 338.94	20 442.17
⑨	'A' Sta. 12+40.00 P.I.	9 388.17	20 474.61
⑩	'A' Sta. 13+78.23 Approx. E Spur Rd.	9 483.71	20 574.52
⑪	'D' Sta. 43+15.78 P.I.	9 608.00	20 276.86

I.L.M.A. Boundary
 Portion of ATS. 837

	DO NOT SCALE THIS DRAWING - USE DIMENSIONS		
	STATE OF ALASKA DEPARTMENT OF TRANSPORTATION AND PUBLIC FACILITIES		
	ECHO COVE		JUNEAU, ALASKA
	PROJECT LAYOUT & SIGNING PLAN		
DESIGNED <i>WmN</i>	CHECKED <i>JDB</i>	DRAWN <i>WmN</i>	DATE <i>Dec 1989</i>
PROJECT NUMBER <i>69716</i>	SHEET <i>3</i> OF <i>10</i>		

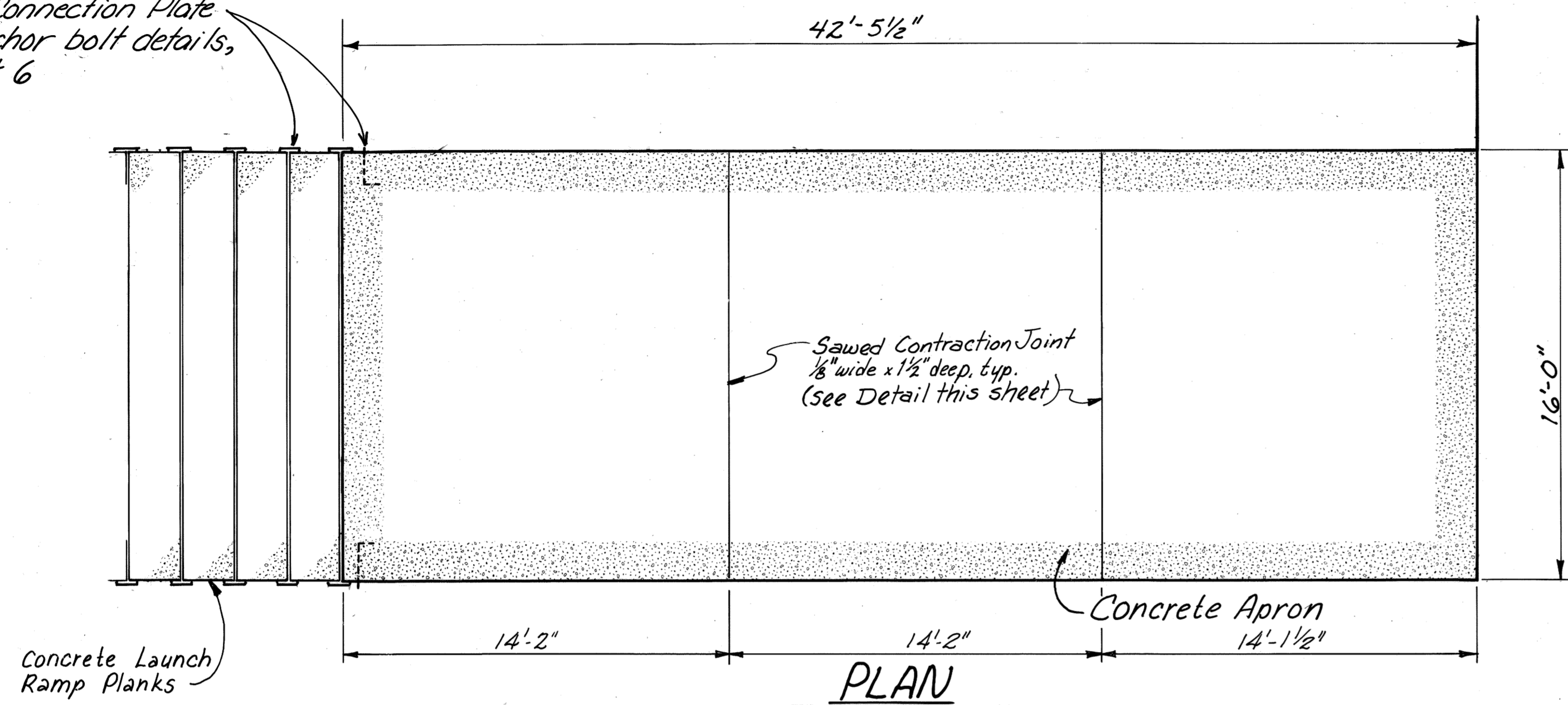


* Class I Riprap
 1 1/2" thick on shoulders
 15" thick under Class II Riprap

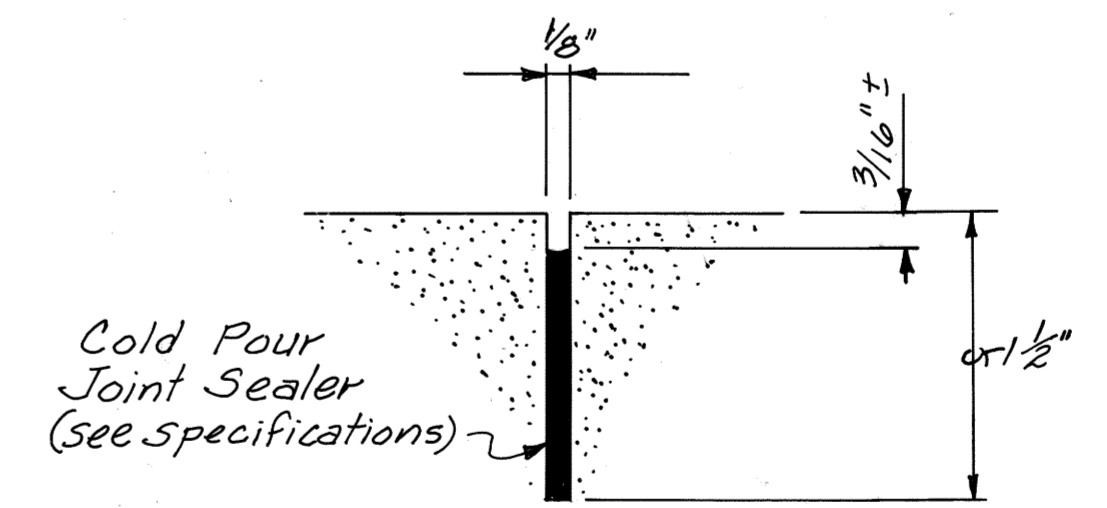
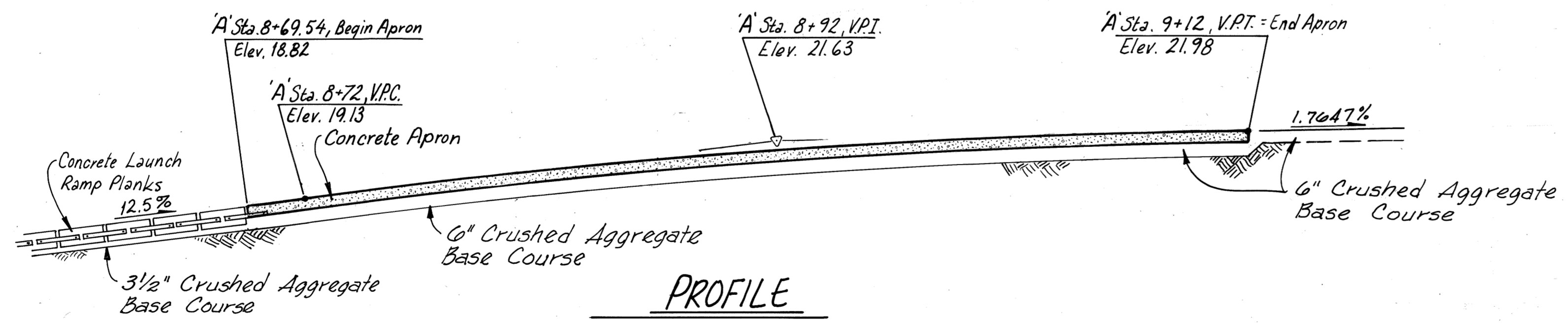
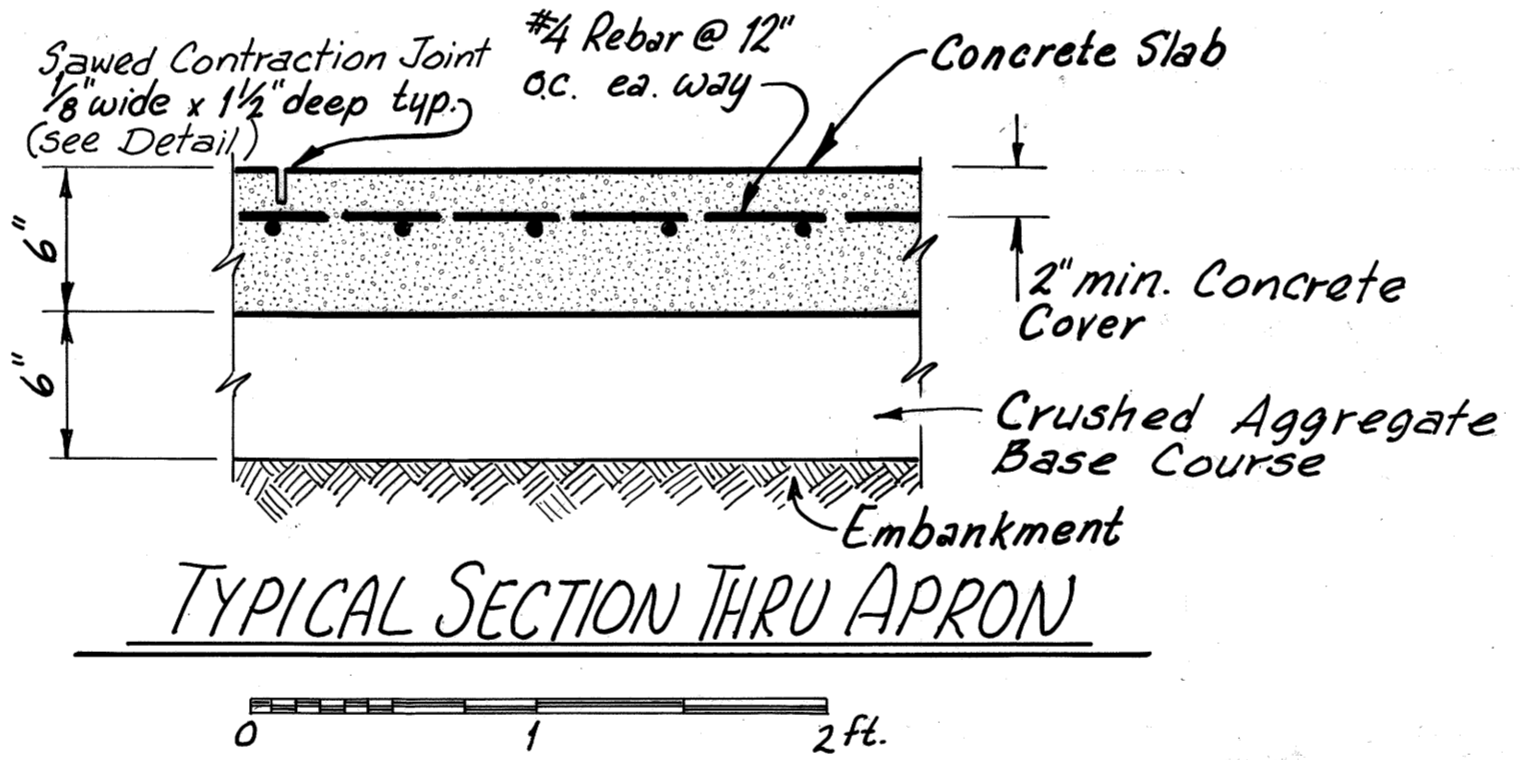
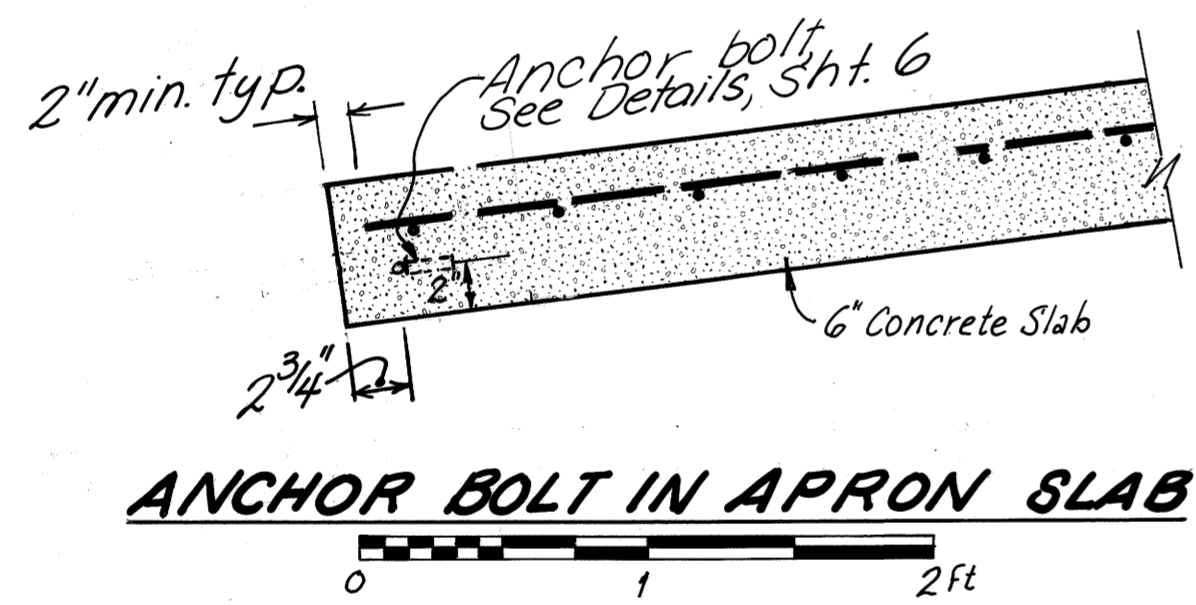


STAMP		DO NOT SCALE THIS DRAWING - USE DIMENSIONS	
		STATE OF ALASKA	
		DEPARTMENT OF TRANSPORTATION AND PUBLIC FACILITIES	
		Echo Cove	JUNEAU, ALASKA
BOAT LAUNCH RAMP PROFILE & SECTIONS			
DESIGNED <i>WmN</i>	CHECKED <i>JOB</i>	DRAWN <i>WmN</i>	DATE <i>Dec. 1989</i>
PROJECT NUMBER 69716	SHEET 4 OF 10		

See Connection Plate & anchor bolt details, sheet 6

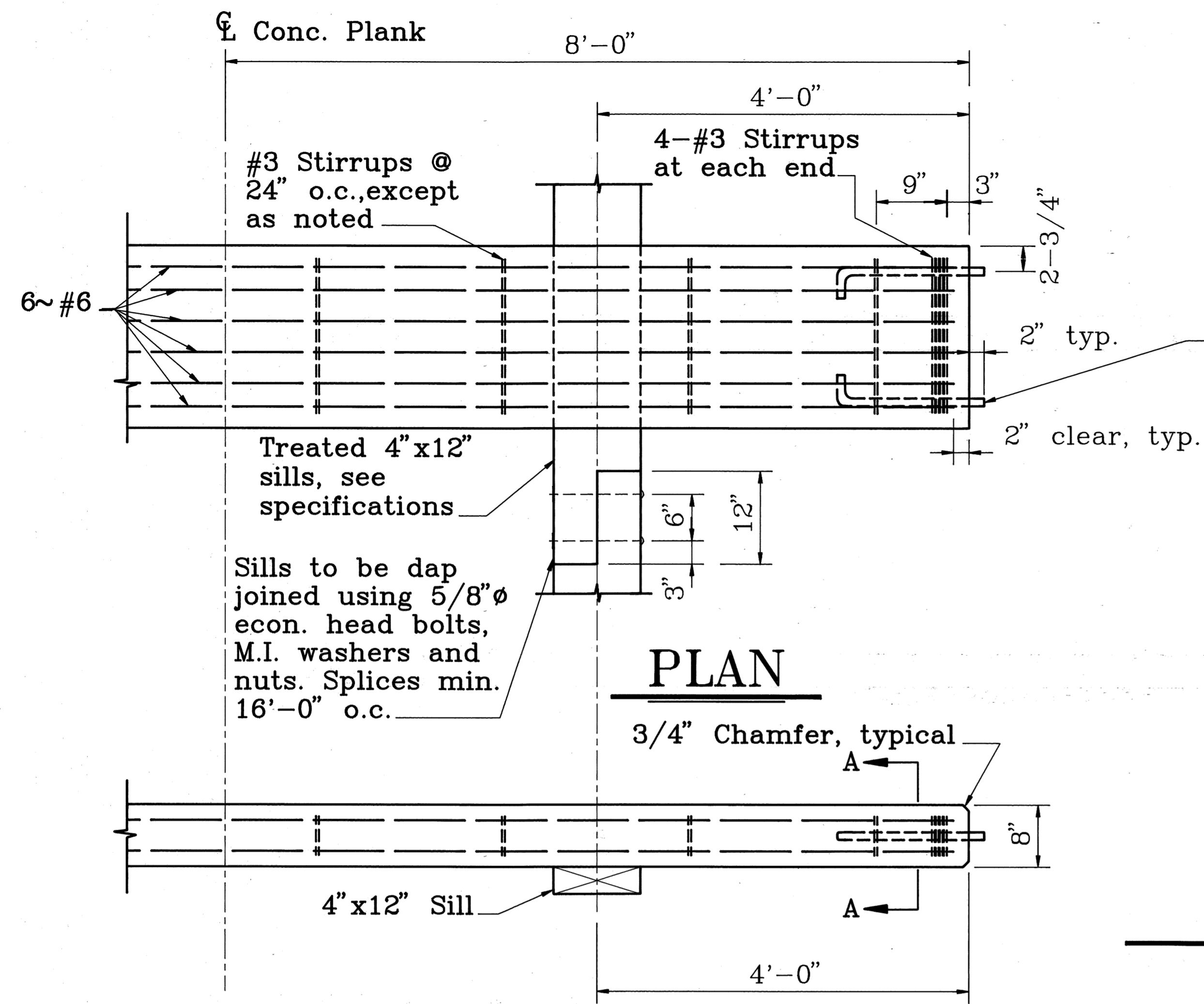


NOTE: Provide bullnose finish or 1/2" chamfer at all exposed edges on apron. Provide heavy broom finish on top of apron.



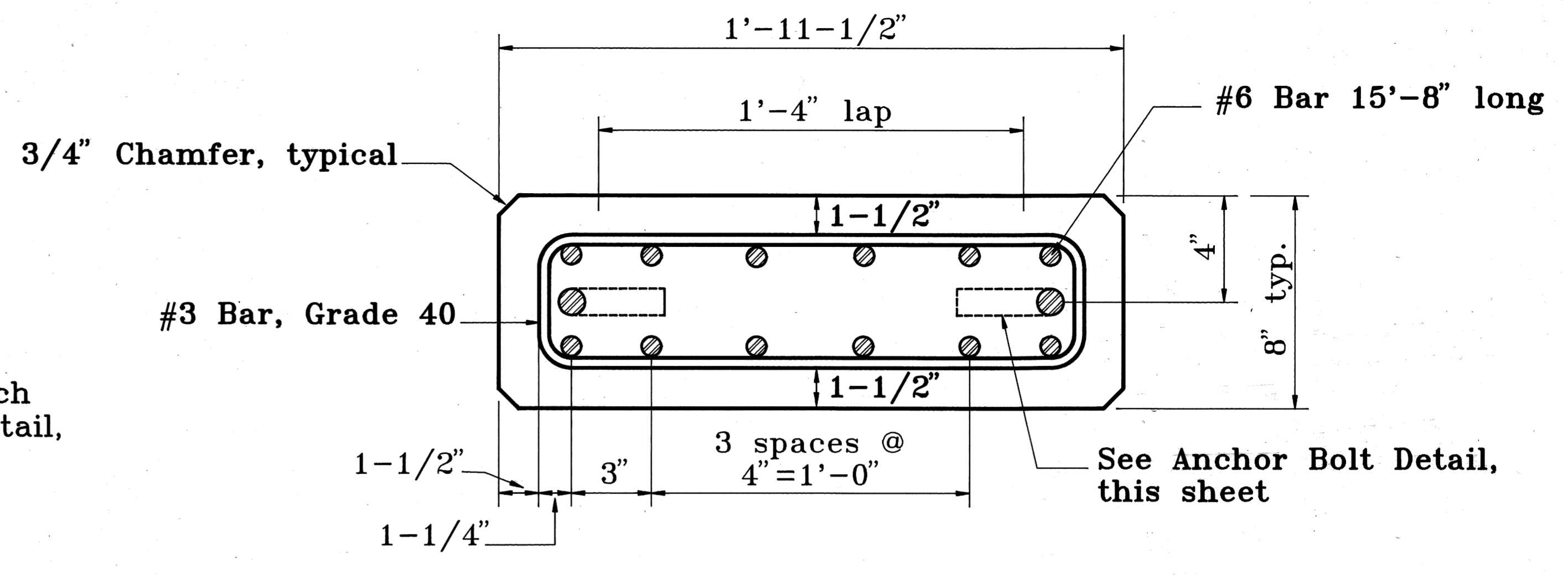
APRON DETAILS

STAMP		DO NOT SCALE THIS DRAWING - USE DIMENSIONS	
		STATE OF ALASKA	
		DEPARTMENT OF TRANSPORTATION AND PUBLIC FACILITIES	
		Echo Cove	Juneau, Alaska
CONCRETE APRON DETAILS			
DESIGNED <i>WmN</i>	CHECKED <i>JDB</i>	DRAWN <i>WmN</i>	DATE <i>Dec. 1989</i>
PROJECT NUMBER <i>69716</i>	SHEET <i>5</i> OF <i>10</i>		

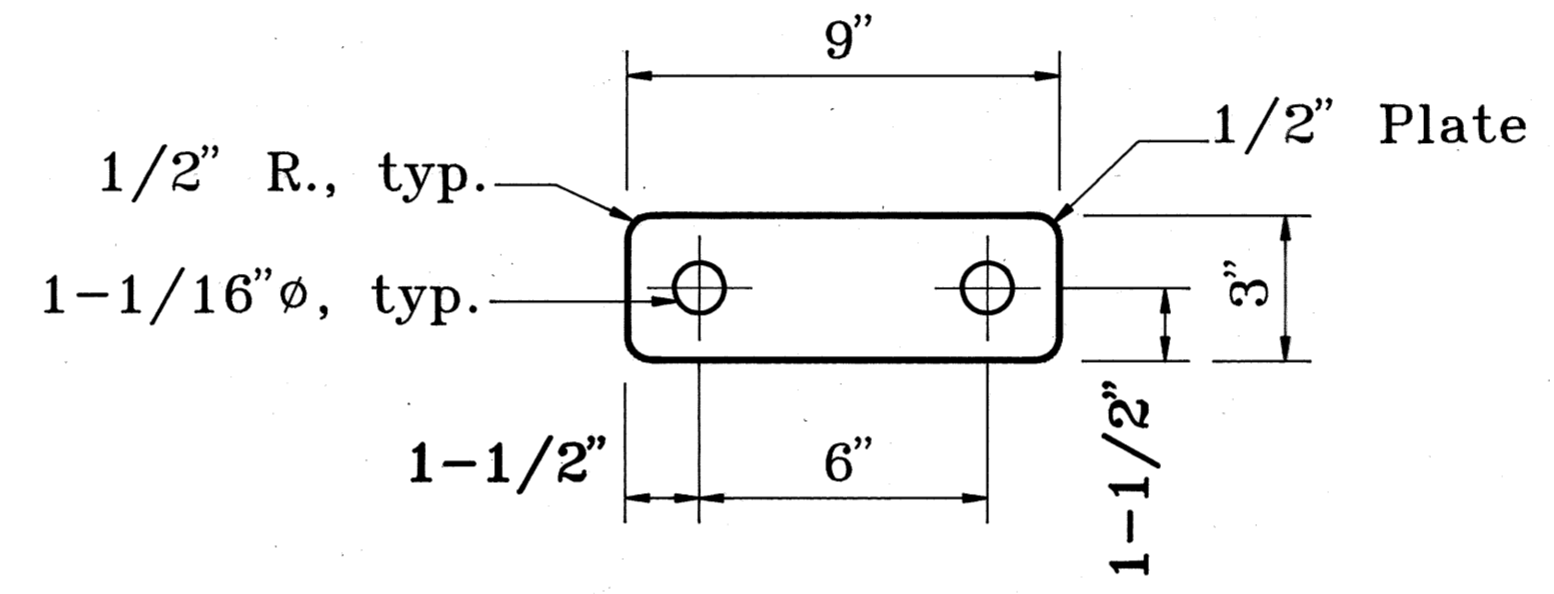


PLAN

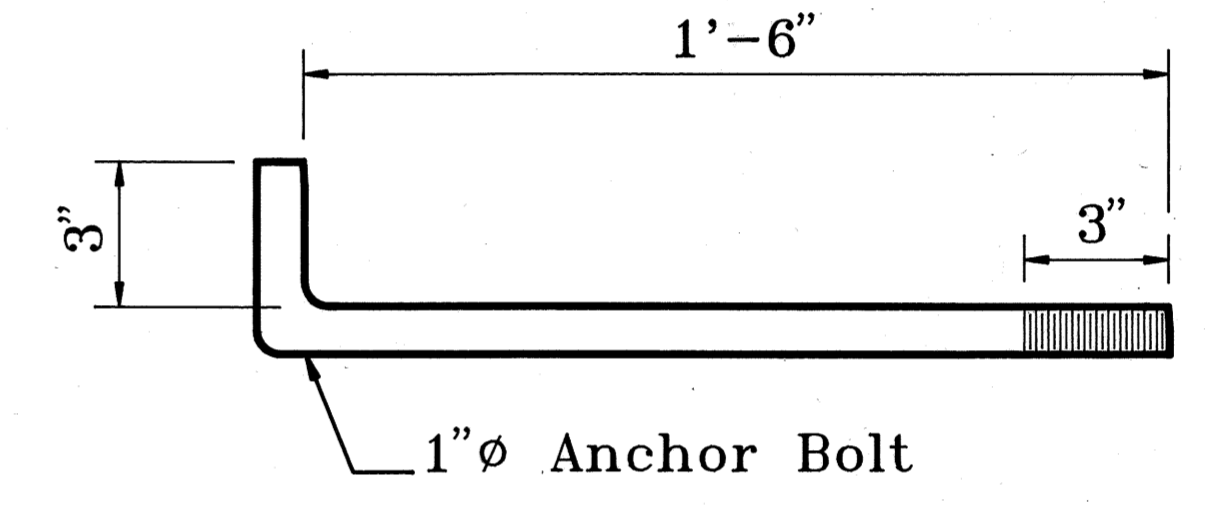
ELEVATION



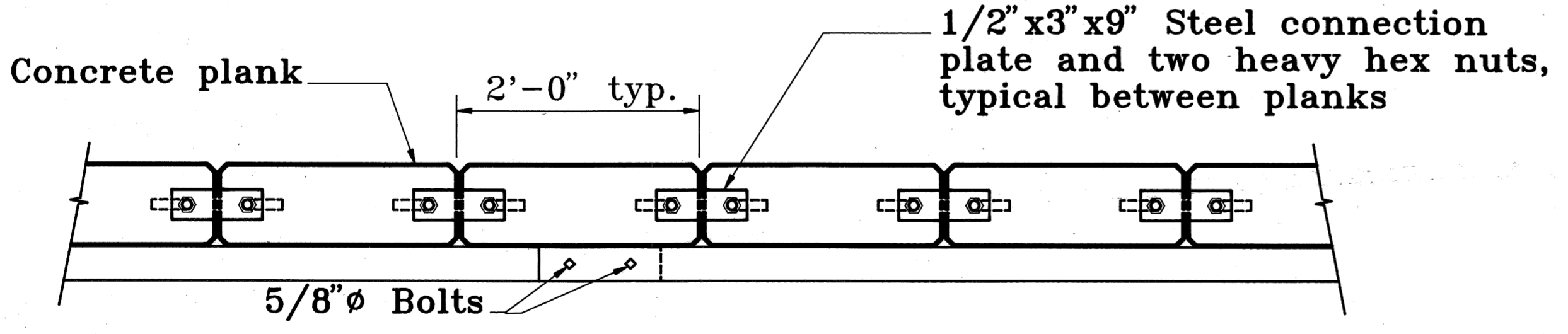
SECTION A-A



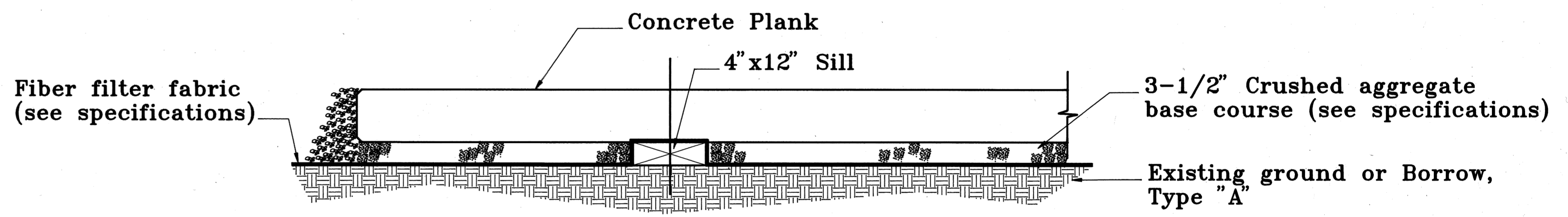
CONNECTION PLATE DETAIL



ANCHOR BOLT DETAIL



TYPICAL PLANK ASSEMBLY



CROSS SECTION DETAIL

NOTES :

Filter Fabric may be placed under or over the sills (as shown) at the Contractor's option. Placing the Filter Fabric over the sills with splices at the sills allows for adjustment of the sills prior to placing planks.

Concrete $f_c \geq 4,500$ p.s.i.
Reinforcing steel $f_c = 60,000$ p.s.i., except Stirrups.

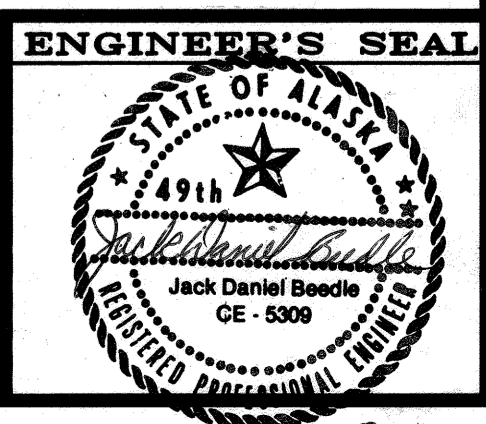
BY:	DATE:	DESCRIPTION OF CHANGE:

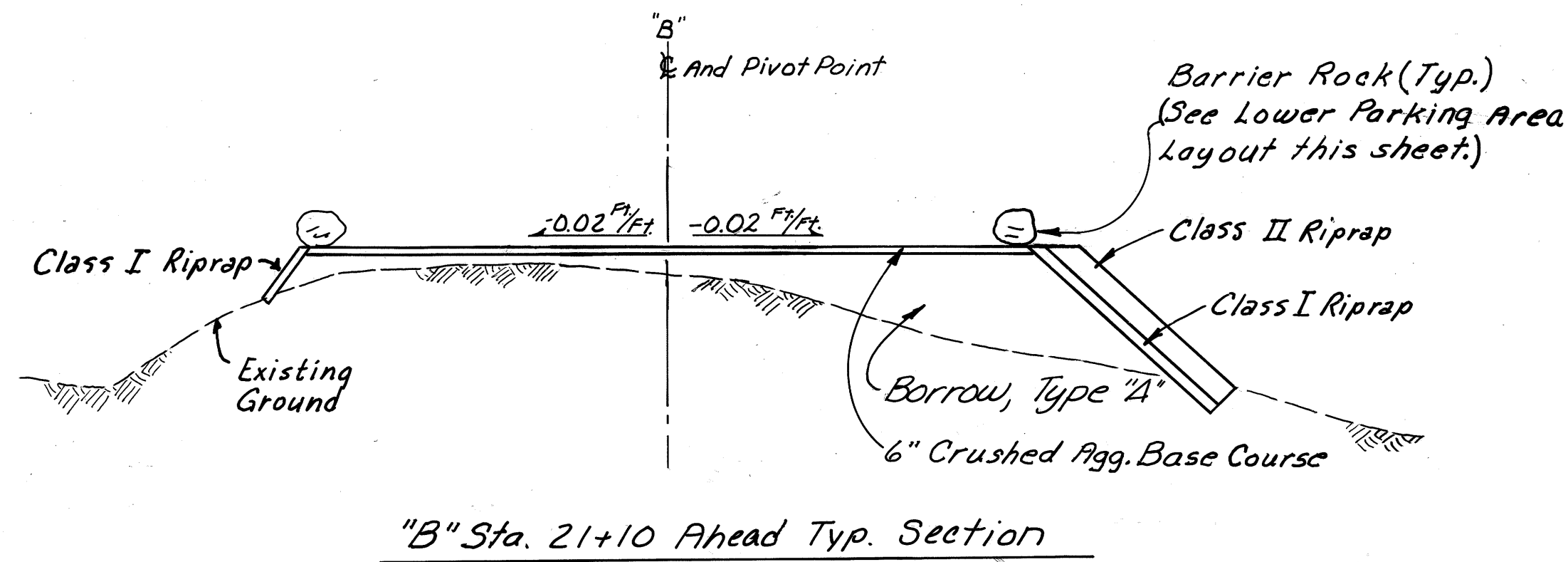
STATE OF ALASKA
DEPARTMENT OF TRANSPORTATION
AND PUBLIC FACILITIES
SOUTHEAST REGION DESIGN & CONSTRUCTION

LAUNCH RAMP DETAILS

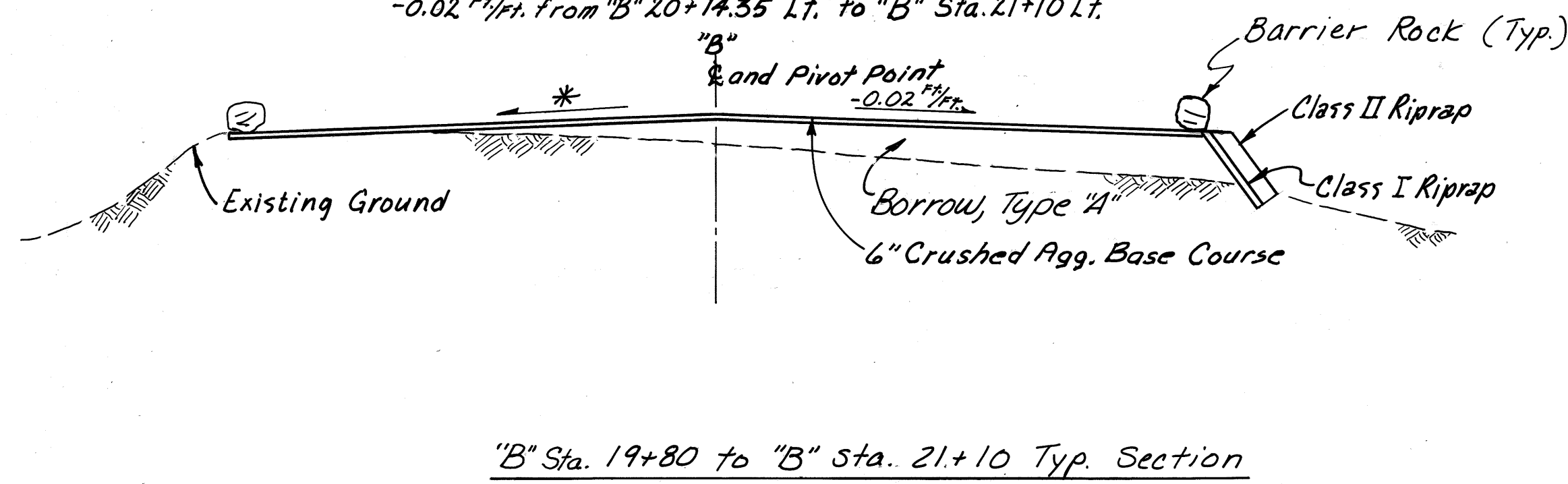
NOTE: DO NOT SCALE FROM THESE PLANS-USE DIMENSIONS

DESIGNED BY: J.D. Beedle	SCALE
DRAWN BY: AutoCAD / B.W.B.	DATE: Dec. 6, 1989
CHECKED BY:	SHEET 6 OF 10

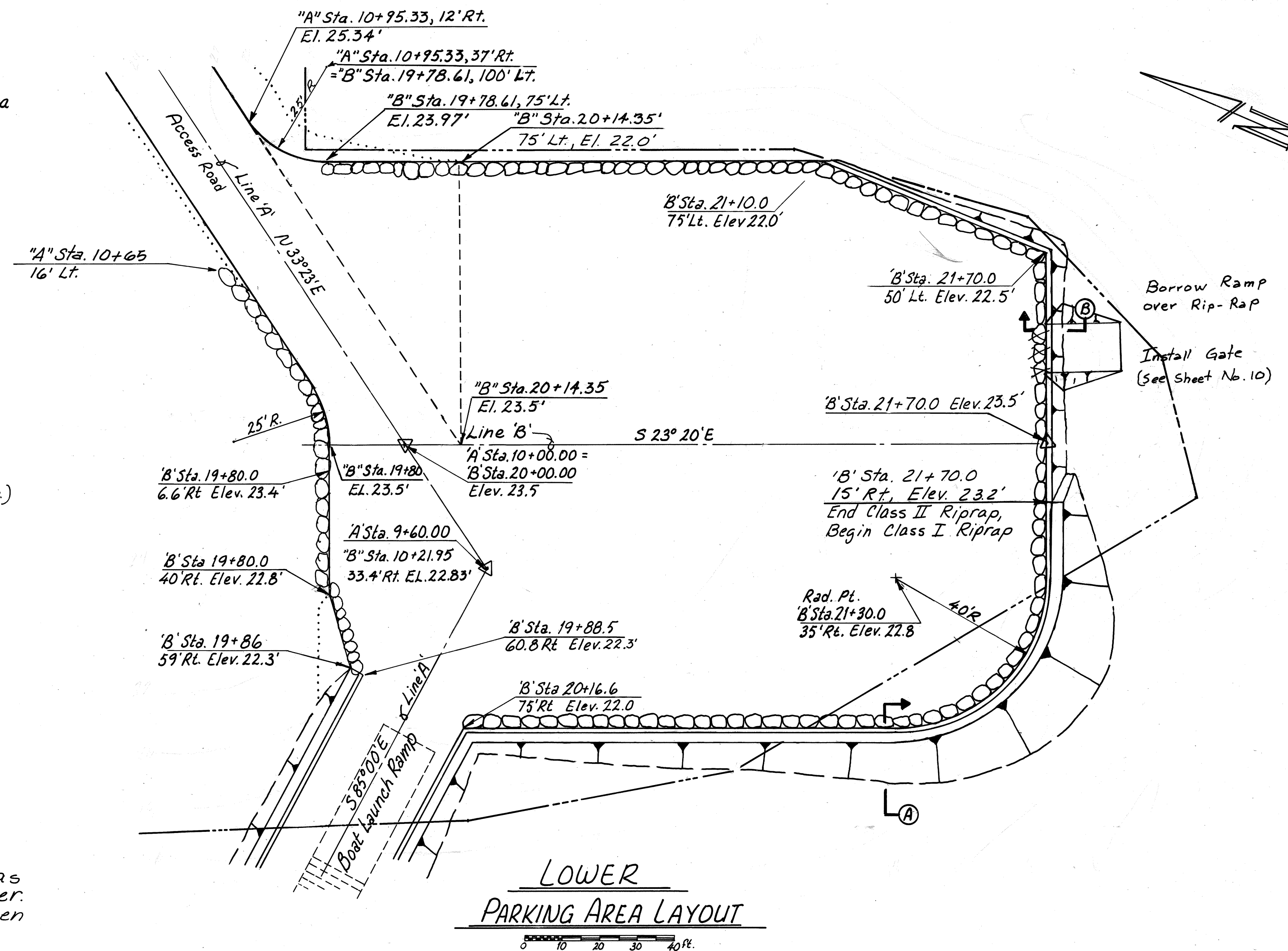
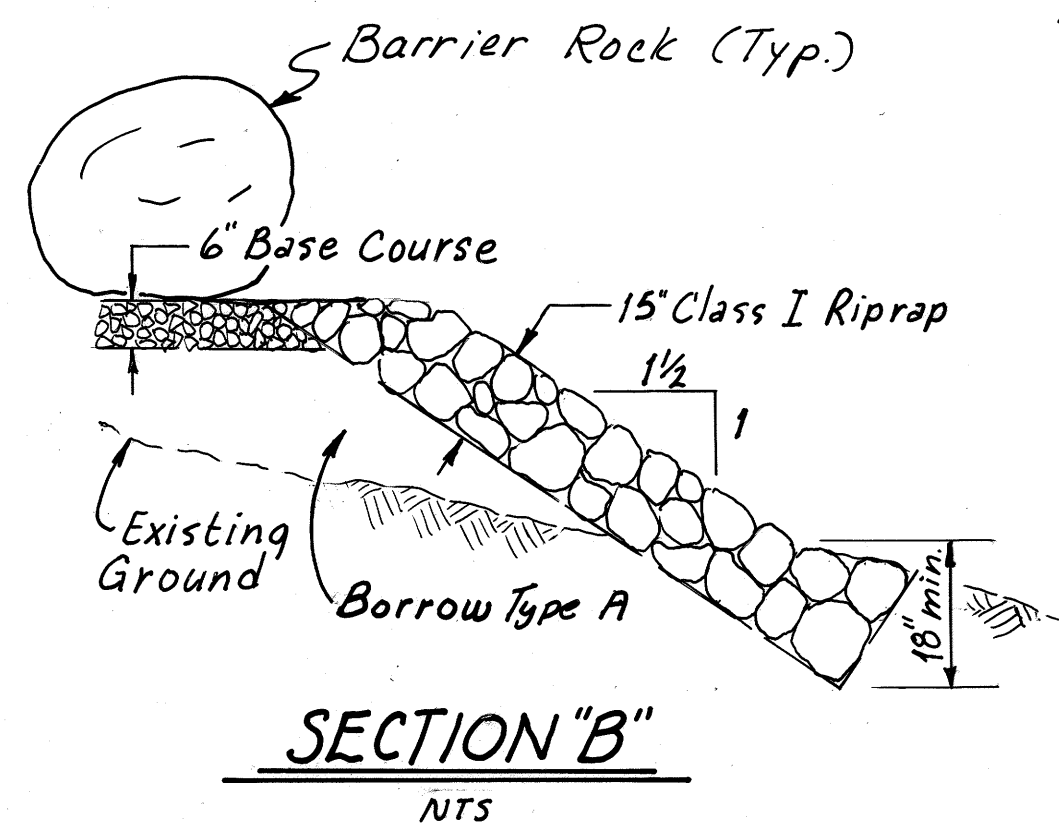
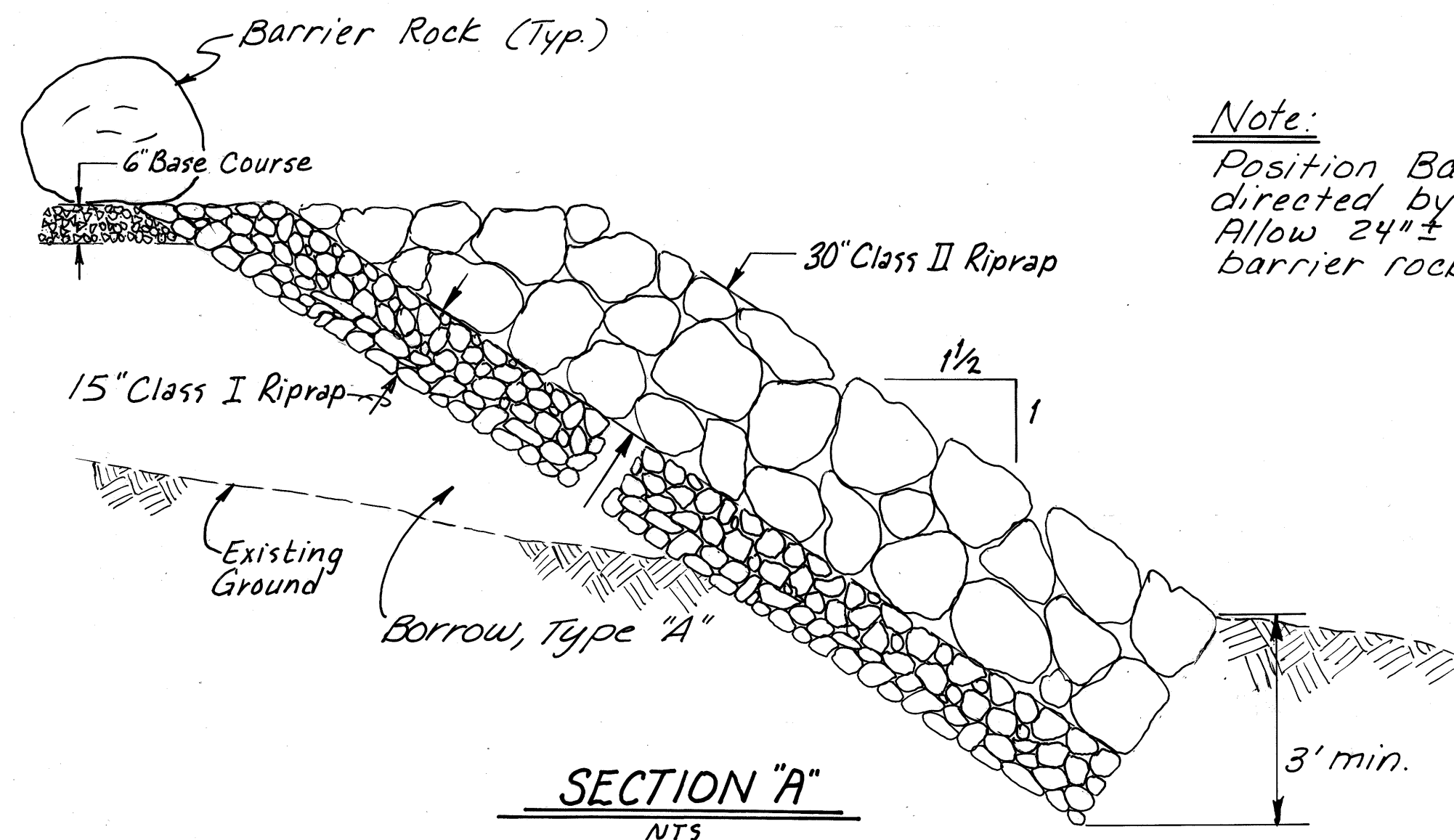




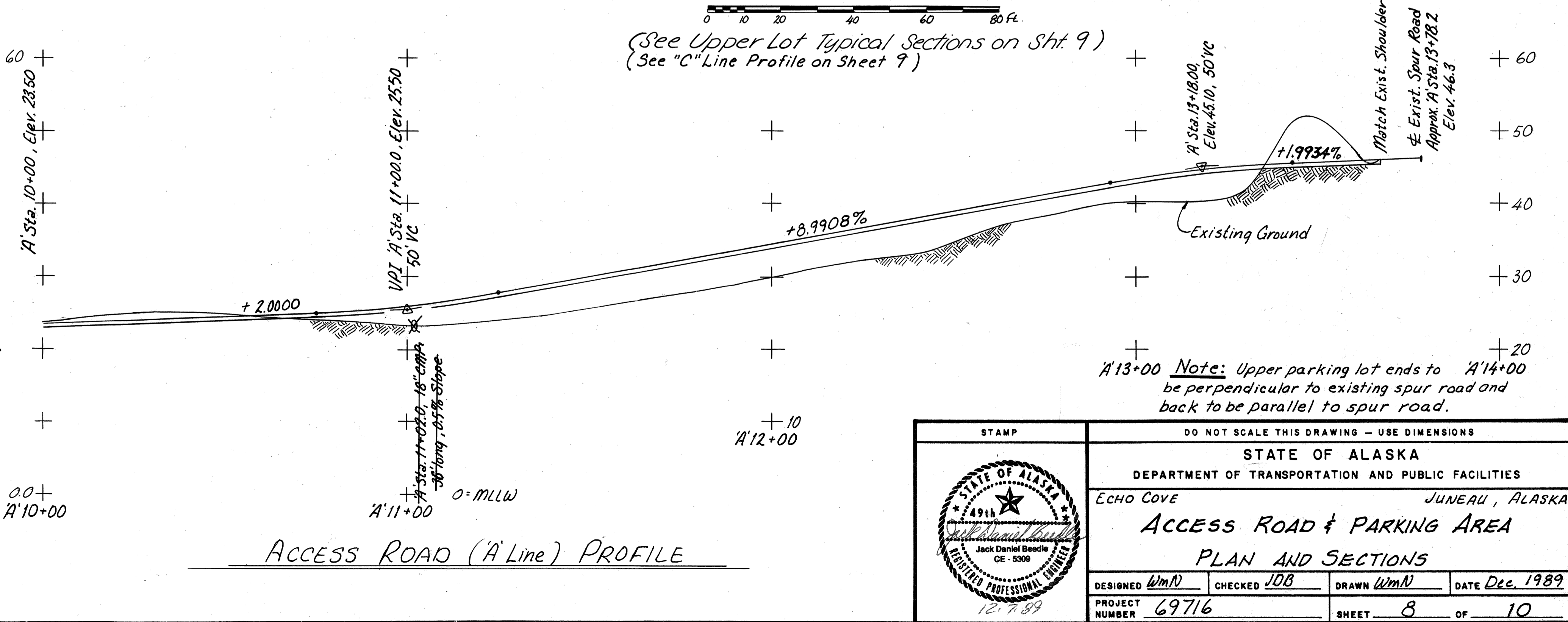
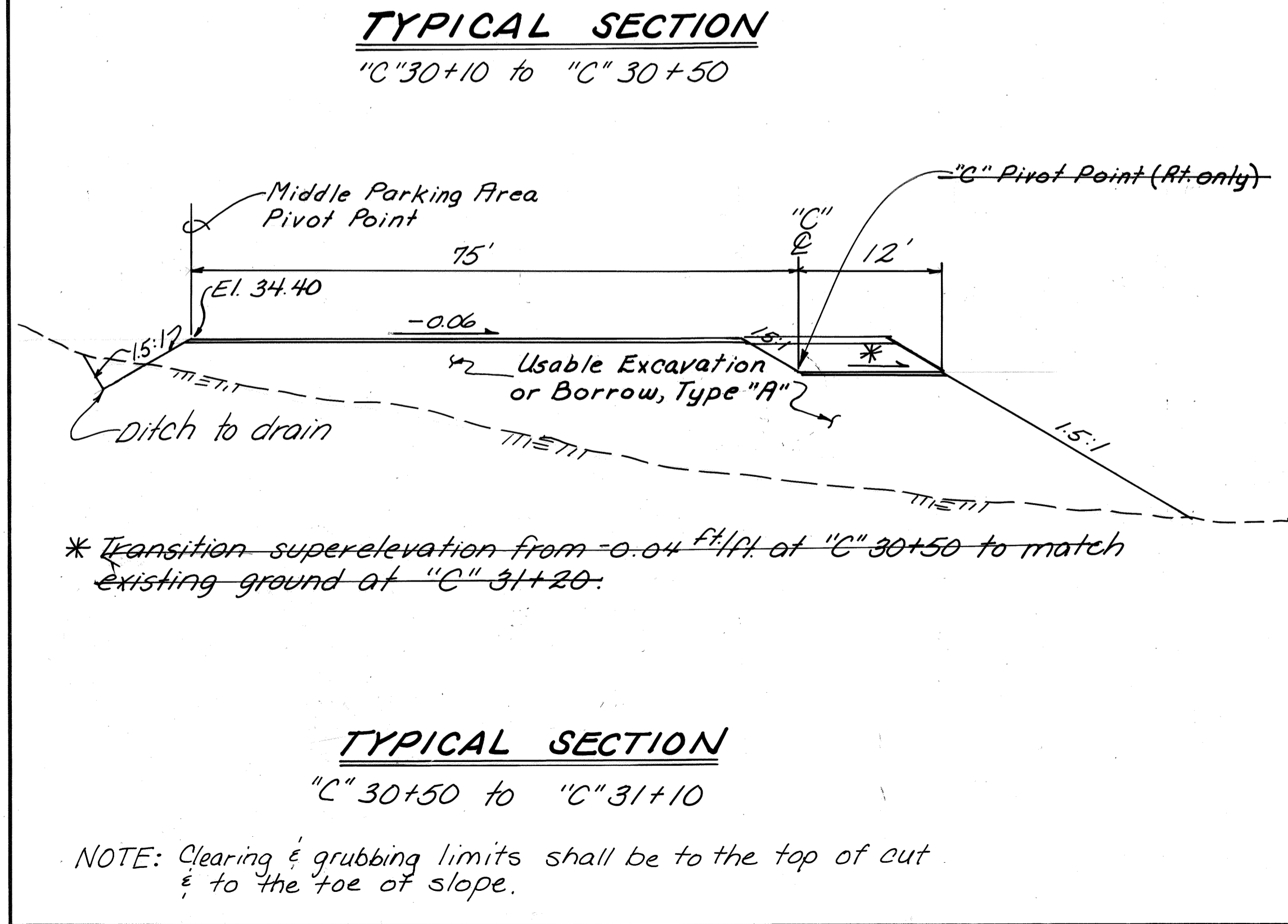
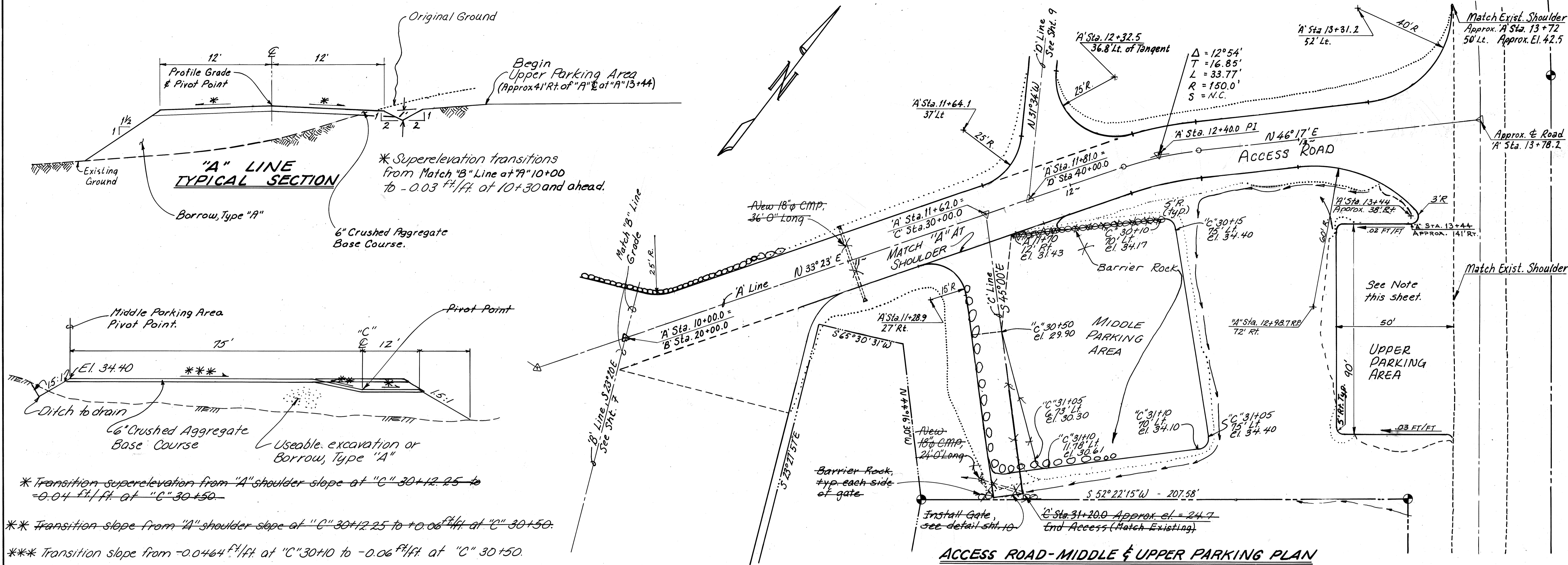
* Super-elevation from "B" 19+80 Lt. to "B" 20+14.35 Lt. shall be that established by the "A" Line and shall transition from "A" edge of shoulder (12' Rt.) to match -0.02 ft/ft. at "B" 20+14.35 Lt. Super-elevation shall be -0.02 ft/ft. from "B" 20+14.35 Lt. to "B" Sta. 21+10 Lt.



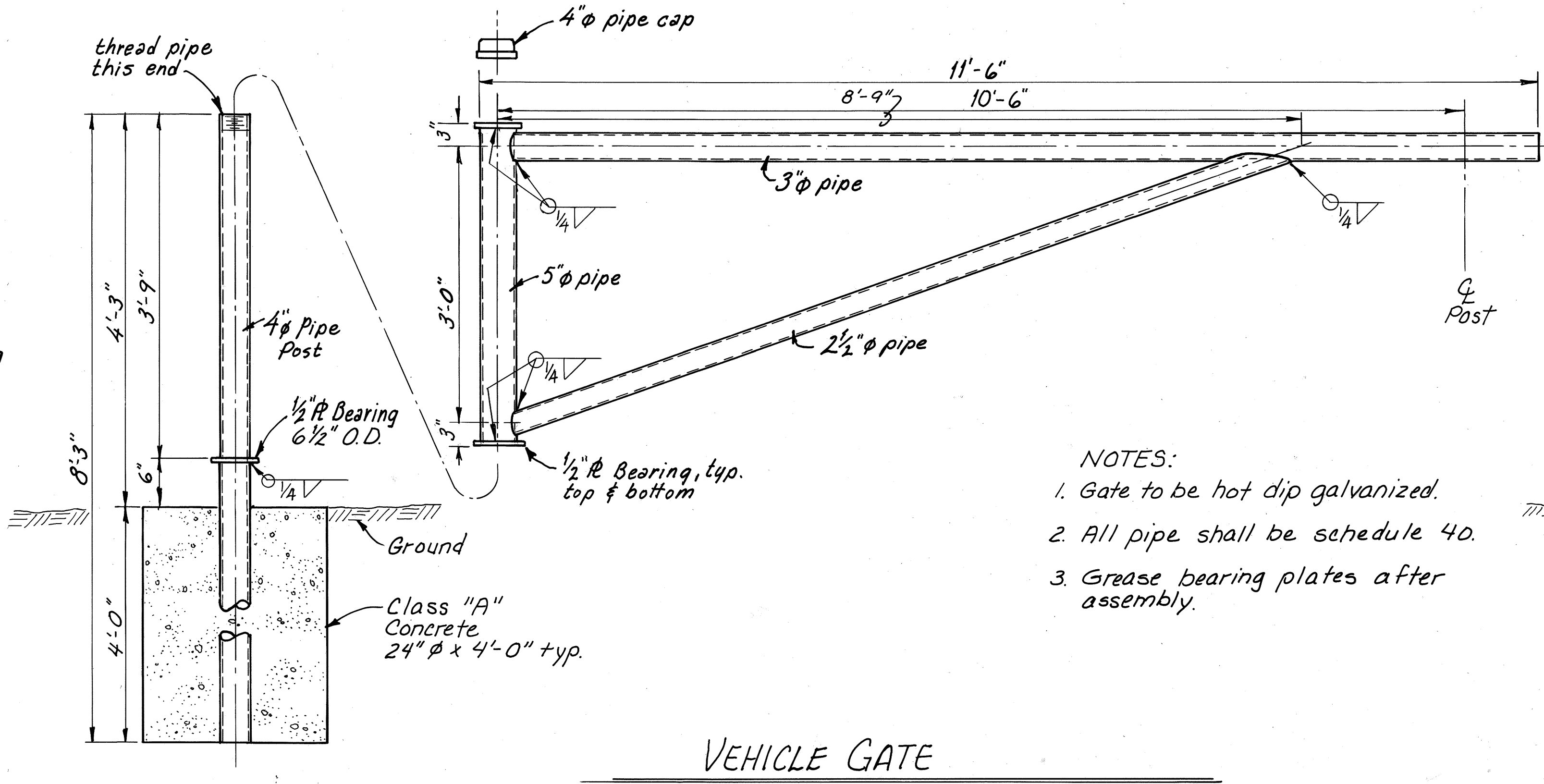
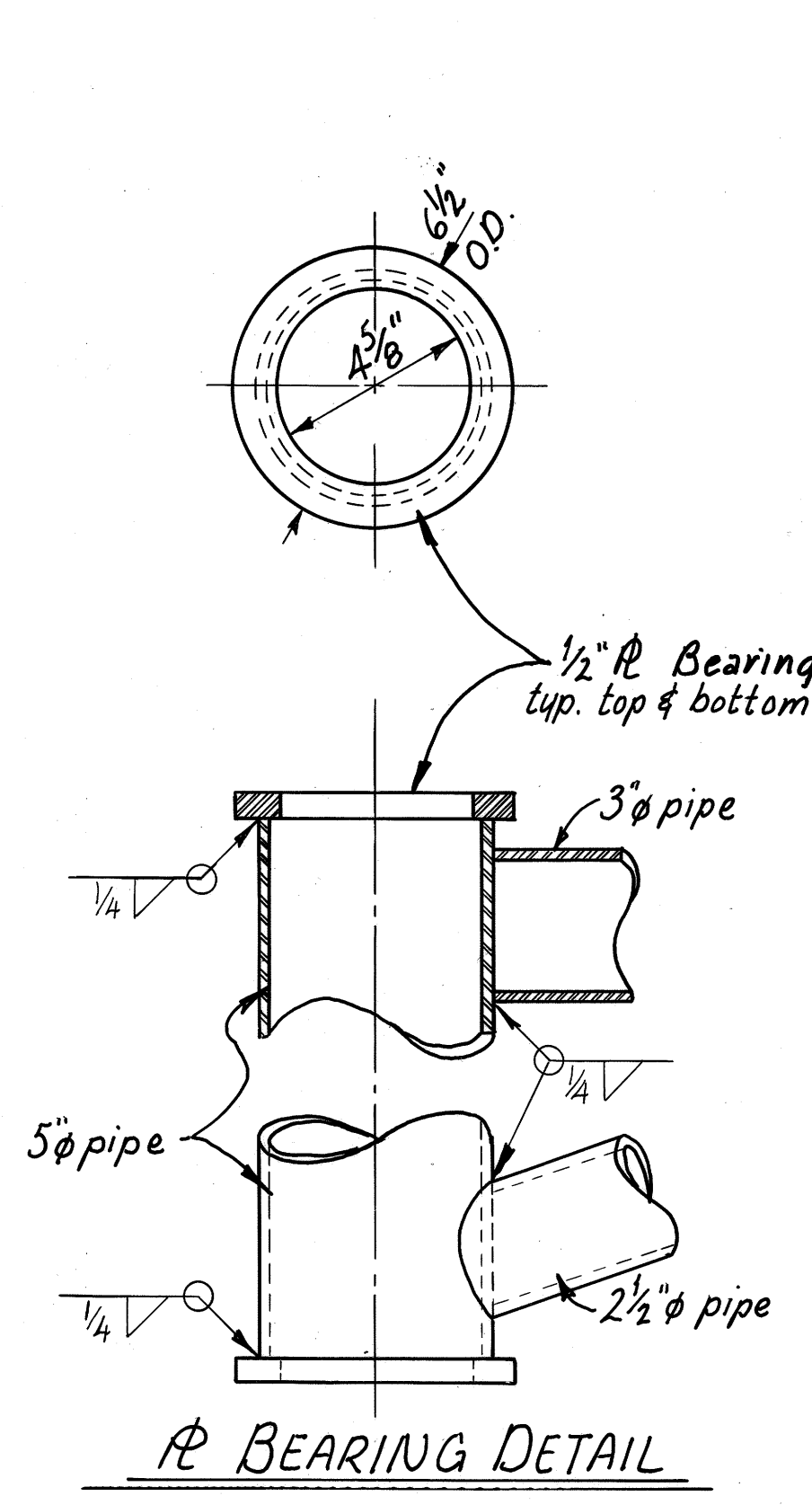
Note:
Position Barrier Rock as directed by the Engineer. Allow 24"± space between barrier rocks.



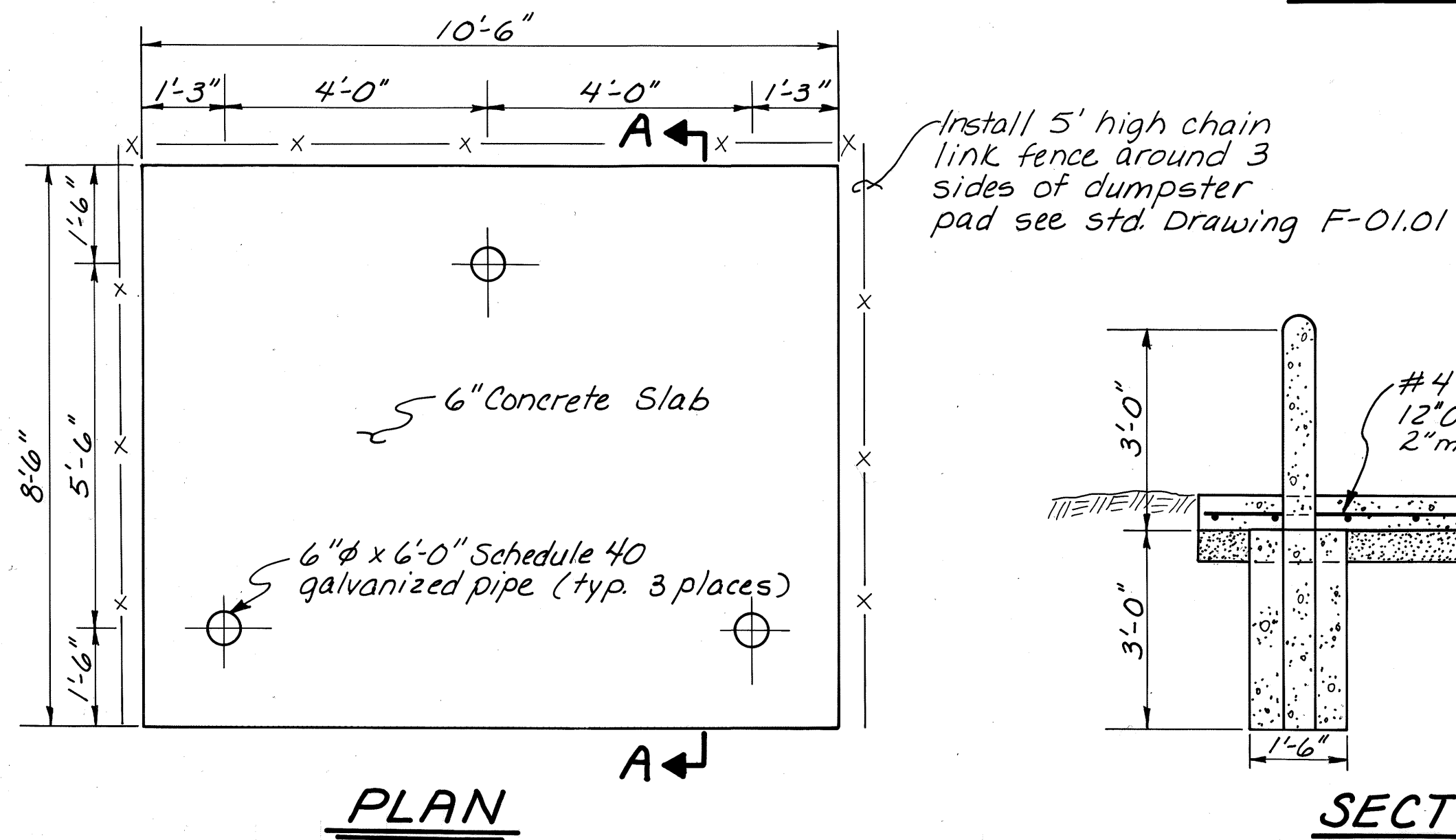
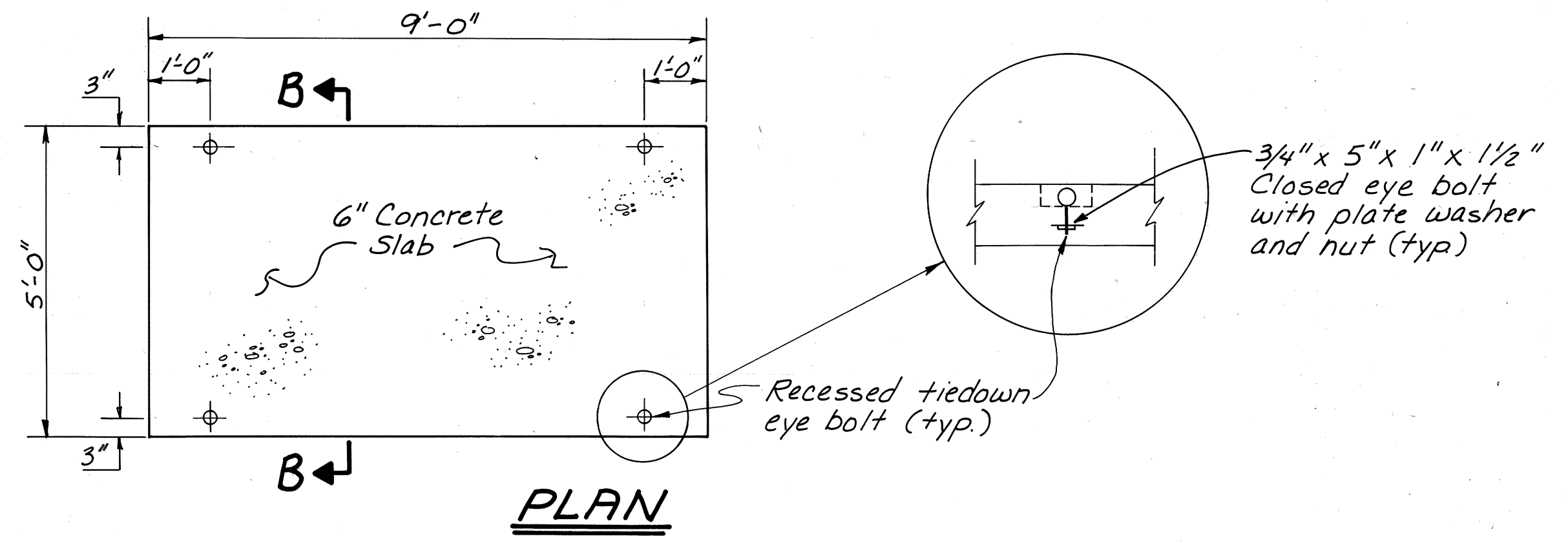
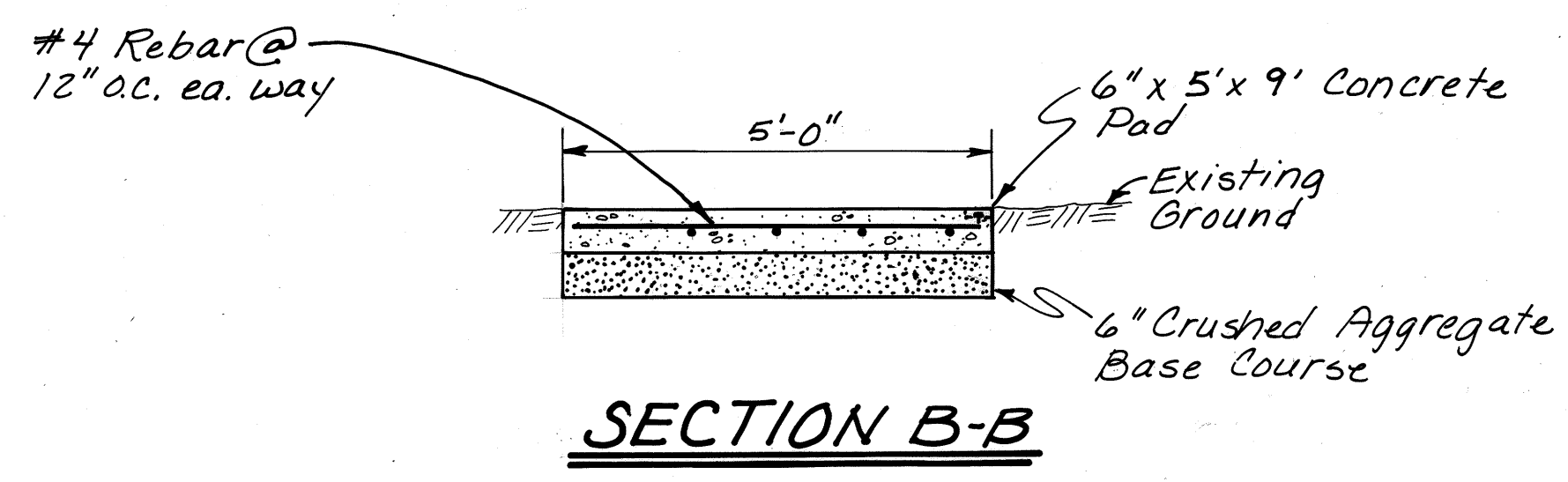
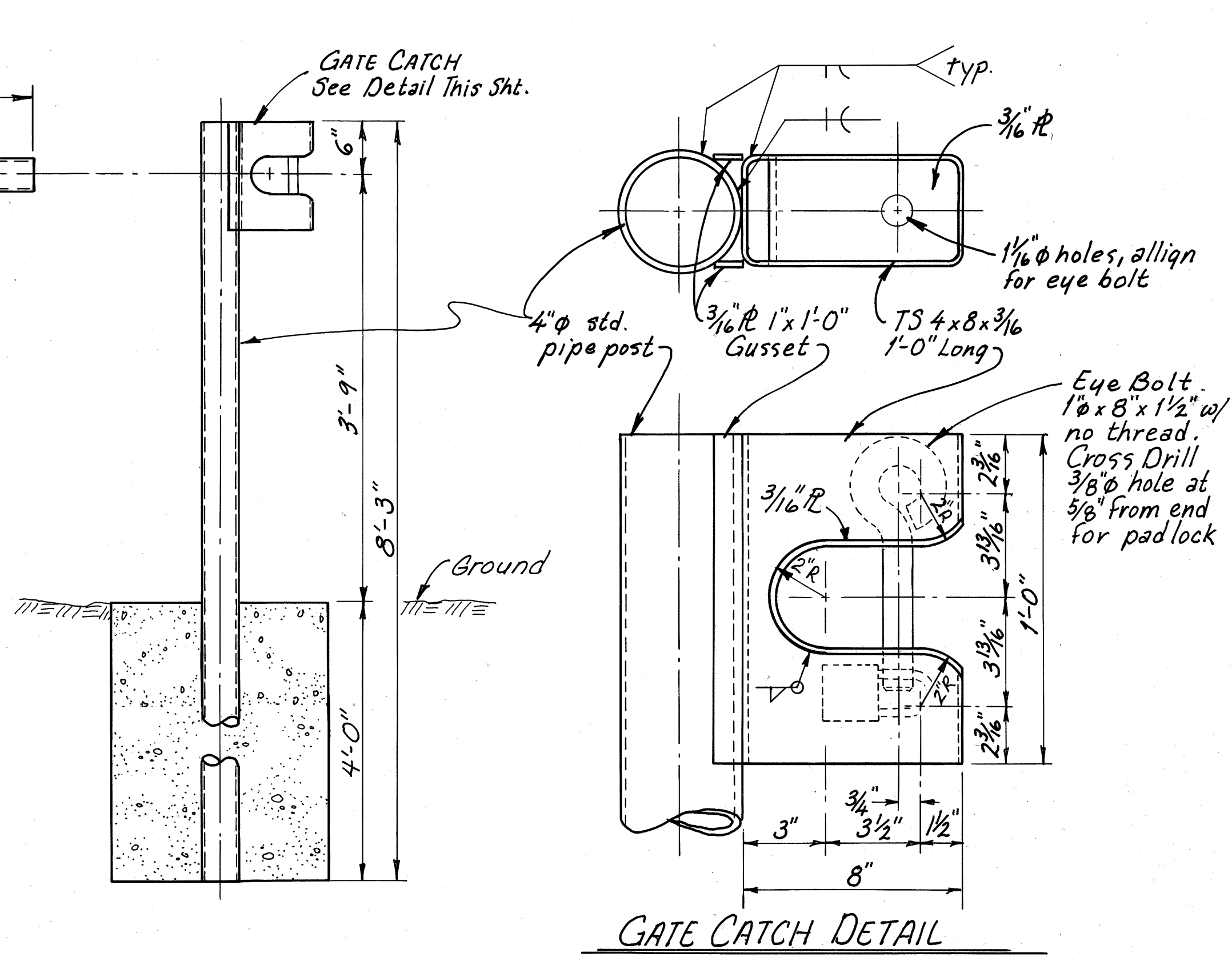
STAMP 	DO NOT SCALE THIS DRAWING - USE DIMENSIONS			
	STATE OF ALASKA DEPARTMENT OF TRANSPORTATION AND PUBLIC FACILITIES			
ECHO COVE		JUNEAU, ALASKA		
LOWER PARKING AREA				
DESIGNED <i>WmV</i>	CHECKED <i>JOB</i>	DRAWN <i>WmV</i>	DATE <i>Dec. 1989</i>	
PROJECT NUMBER <i>69716</i>	SHEET <i>7</i> OF <i>10</i>			



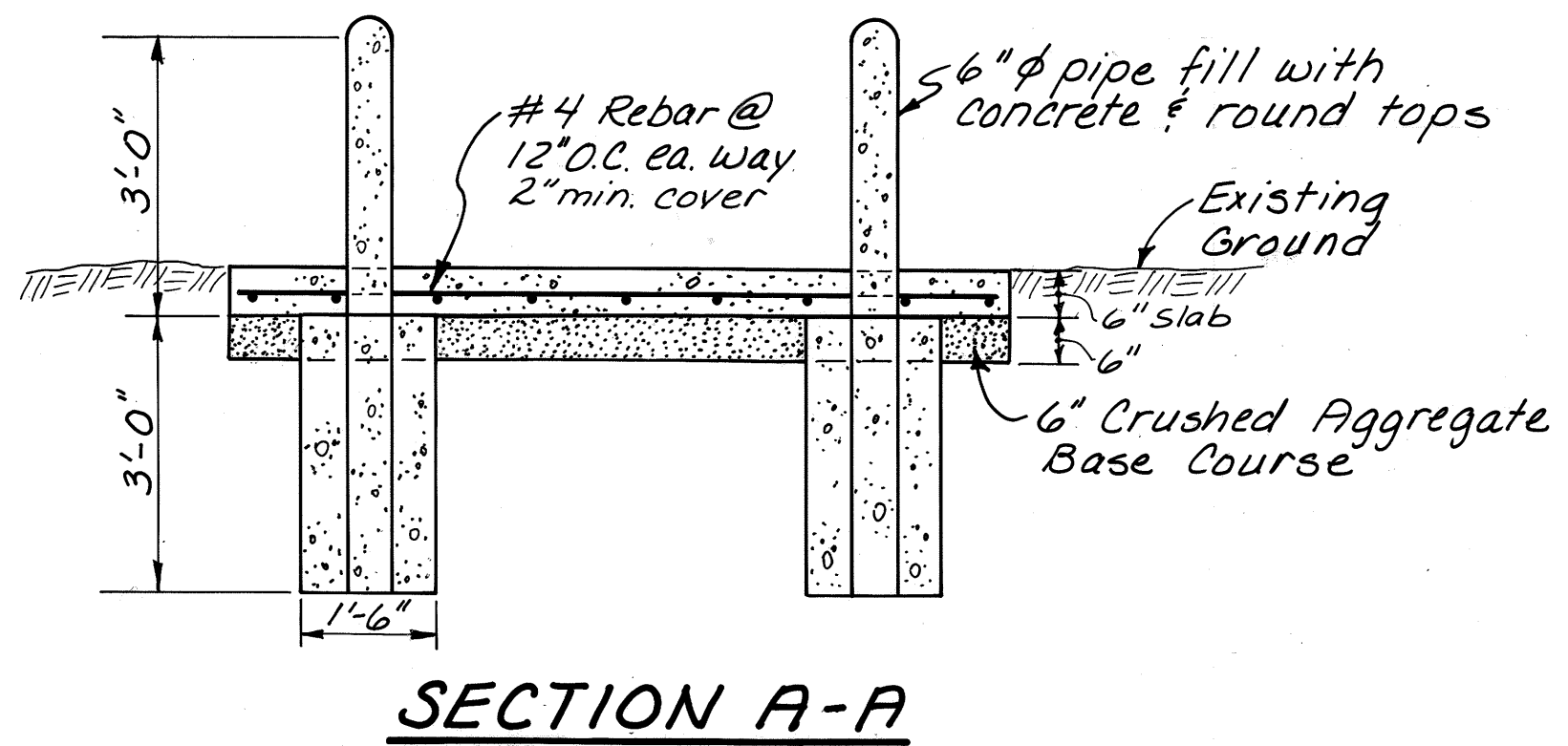
STAMP		DO NOT SCALE THIS DRAWING - USE DIMENSIONS	
		STATE OF ALASKA	
		DEPARTMENT OF TRANSPORTATION AND PUBLIC FACILITIES	
ECHO COVE		JUNEAU, ALASKA	
ACCESS ROAD & PARKING AREA			
PLAN AND SECTIONS			
DESIGNED <i>WmN</i>	CHECKED <i>JOB</i>	DRAWN <i>WmN</i>	DATE Dec. 1989
PROJECT NUMBER 69716	SHEET 8		OF 10



- NOTES:**
1. Gate to be hot dip galvanized.
 2. All pipe shall be schedule 40.
 3. Grease bearing plates after assembly.



PORTABLE TOILET PAD



	DO NOT SCALE THIS DRAWING - USE DIMENSIONS			
	STATE OF ALASKA DEPARTMENT OF TRANSPORTATION AND PUBLIC FACILITIES			
Echo Cove		Juneau, Alaska		
Misc. DETAILS				
DESIGNED <i>WN</i>	CHECKED <i>JOB</i>	DRAWN <i>WN</i>	DATE <i>Dec. 1989</i>	
PROJECT NUMBER <i>69716</i>	SHEET <i>10</i> OF <i>10</i>			