

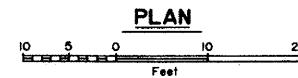
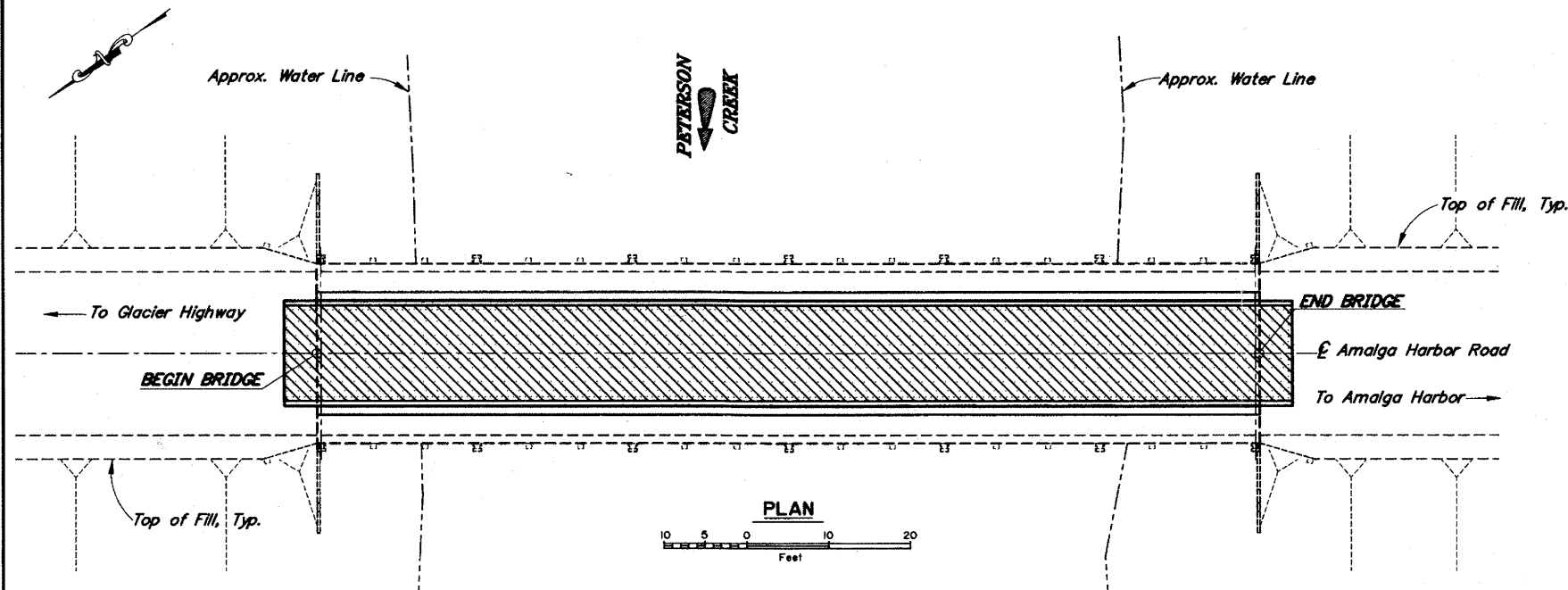
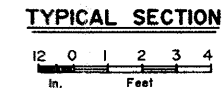
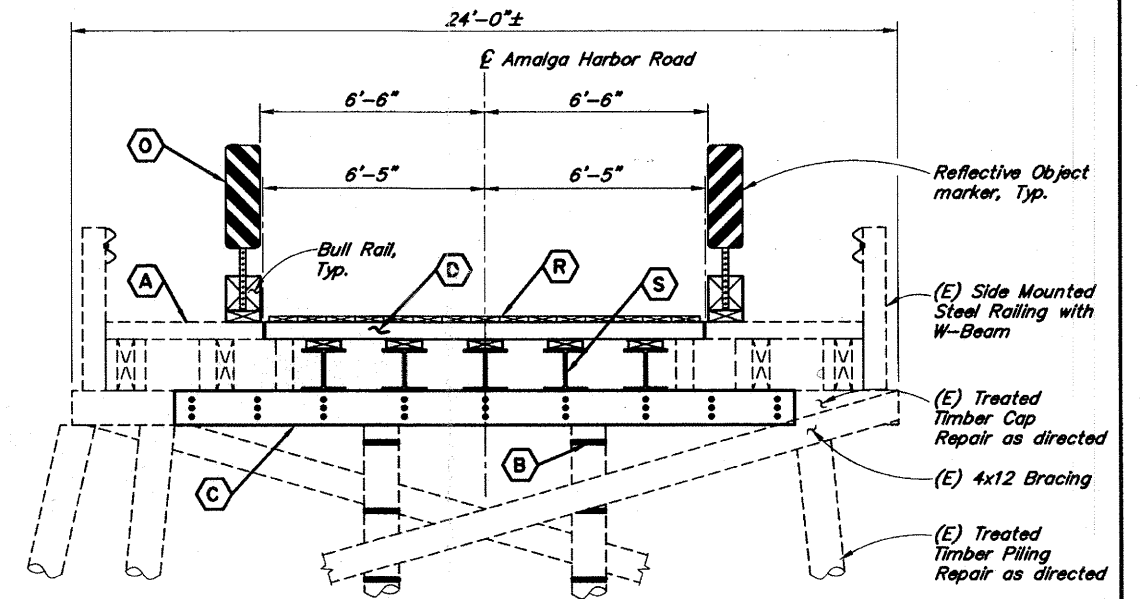
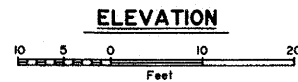
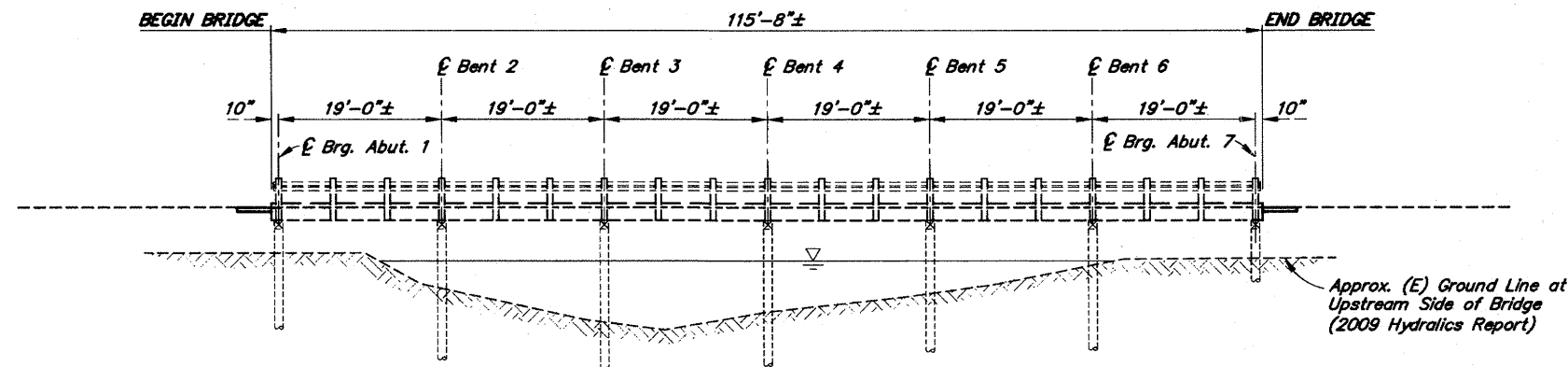
AS BUILT PLANS

Contractor: Trucano Const. Co.

P.E. KRAIG NOVHIEM

Begin: Nov. 26, 2010 - END: Dec 23, 2010

STATE	PROJECT DESIGNATION	YEAR	SHEET NO.	TOTAL SHEETS
ALASKA	69417	2011	1	4



Project As-Built Drawings have been reviewed by the Project Engineer and represent to the best of my knowledge, the project as constructed.

PE *Kraig Novhiem* Date *4/19/11*
Jean Hly

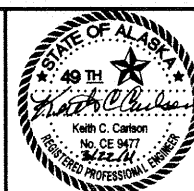
REHABILITATION

BRIDGE DRAWING INDEX	
TITLE	DWG. NO.
GENERAL LAYOUT	1
ABUTMENTS	2
TYPICAL SECTION	3
FRAMING PLAN	4

LEGEND	
(A)	Remove Existing Asphalt
(B)	Pile Banding
(C)	Pile Cap Side Plates
(D)	D.O.T. Supplied Nail-Lam Deck
(O)	Object Markers
(R)	Running Planks
(S)	Replace Existing Timber Stringers with HP14x117 Stringers

DESIGNED BY: <i>Keith Carlson</i>	CHECKED BY: <i>Jared Lovhage</i>	LAYOUT BY: <i>Keith Carlson</i>	CHECKED BY: <i>Jared Lovhage</i>
DRAWN BY: <i>Sam Sallie</i>	CHECKED BY: <i>Keith Carlson</i>	SPECIFICATIONS BY: <i>Keith Carlson</i>	P S & E COMPARED:
QUANTITIES BY: <i>Keith Carlson</i>	CHECKED BY:	APPROVAL RECOMMENDED BY: <i>Richard Pratt</i>	

STATE OF ALASKA
DEPARTMENT OF TRANSPORTATION
AND PUBLIC FACILITIES
BRIDGE SECTION

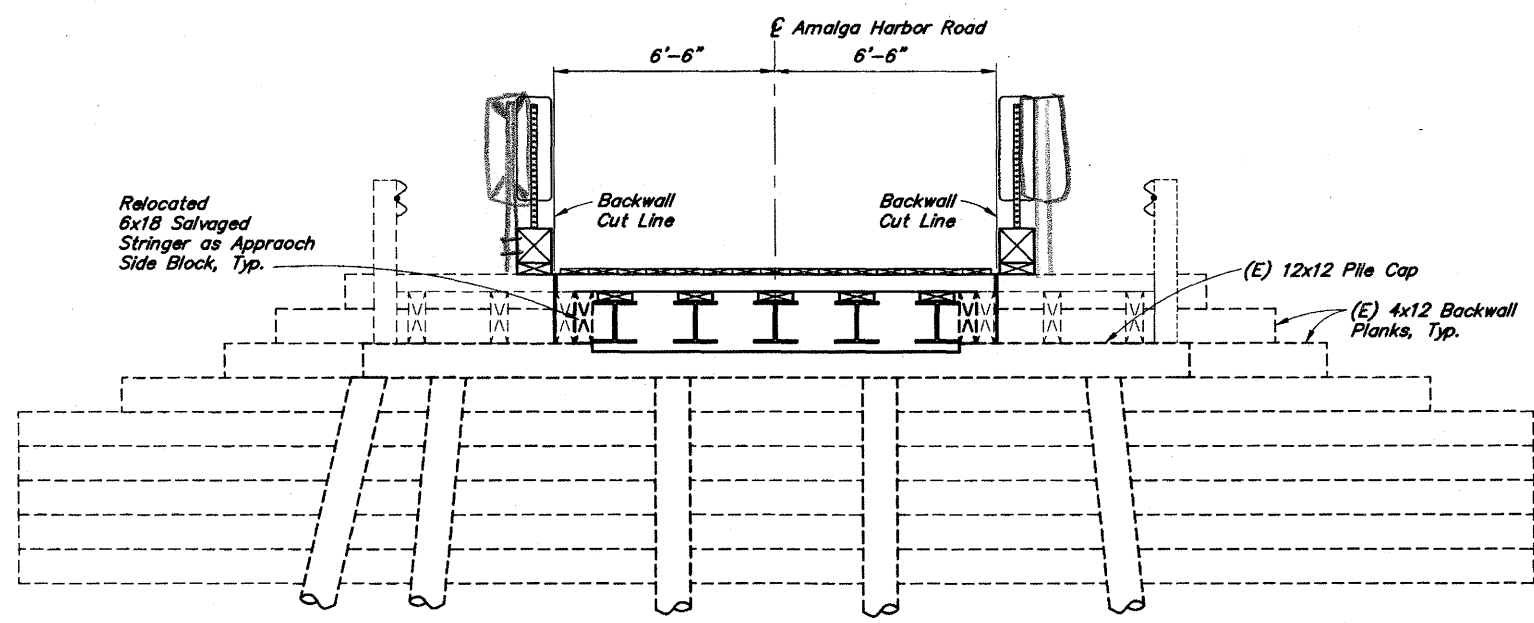


PETERSON CREEK BRIDGE
ALMALGA HARBOR ROAD
GENERAL LAYOUT

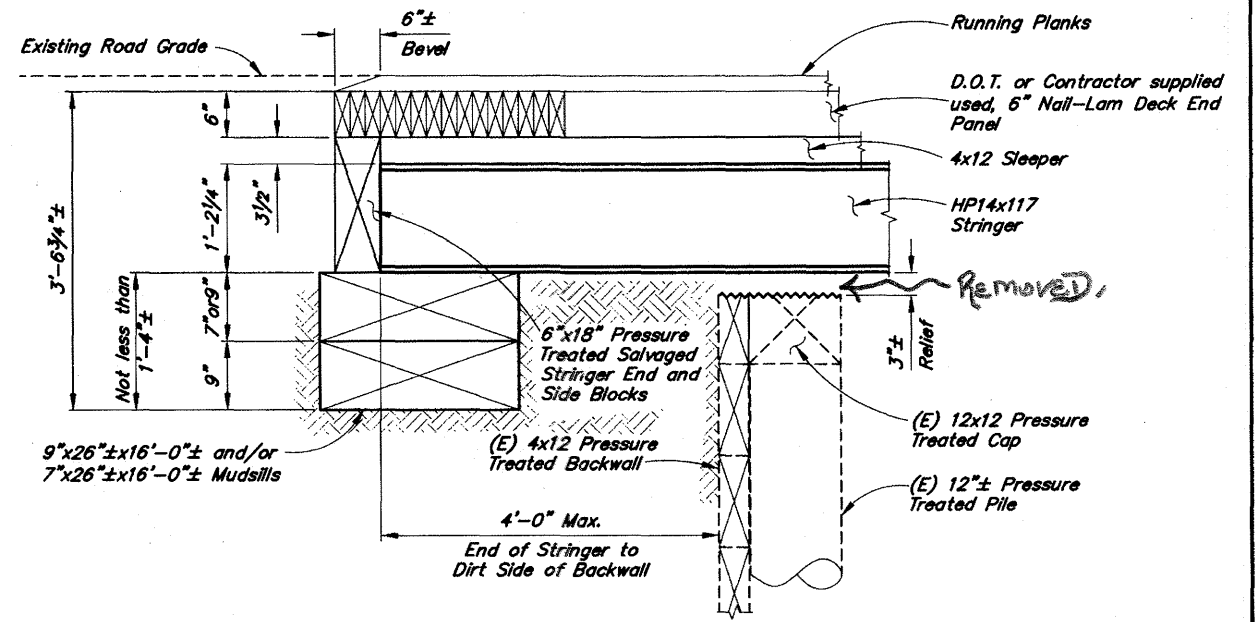


BRIDGE NO. 383
DWG. NO. 1

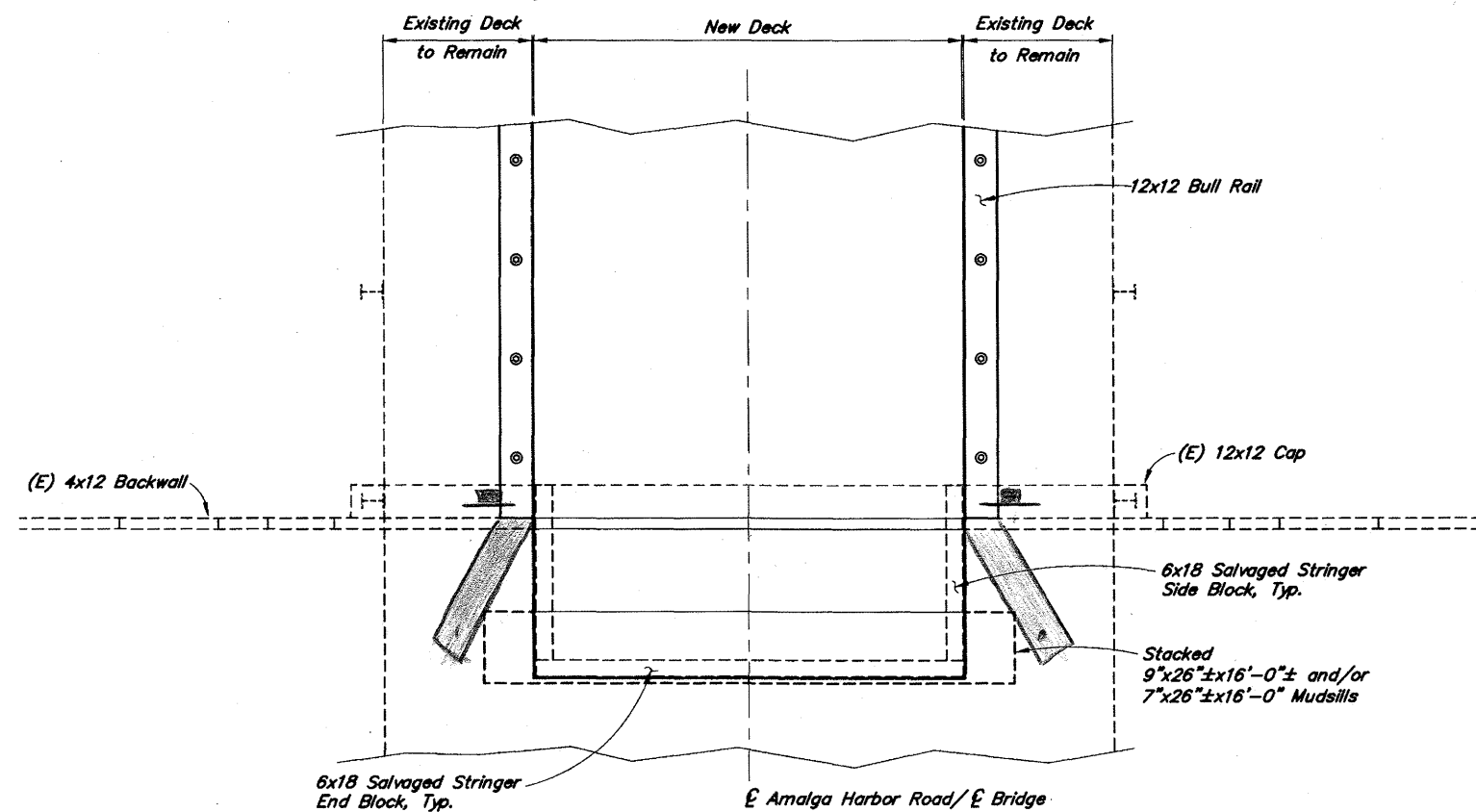
STATE	PROJECT DESIGNATION	YEAR	SHEET NO.	TOTAL SHEETS
ALASKA		2010	2	4



ELEVATION
 12 0 1 2 3 4
 In. Feet



TYPICAL END SPAN SUPPORT
LONGITUDINAL SECTION
 12 6 0 1 2
 In. Feet



END SPAN SUPPORT PLAN
 12 0 1 2 3 4
 In. Feet

GENERAL NOTES

DESIGN: AASHTO LRFD Bridge Design Specifications, 2010 edition, with latest interim specifications. For existing members see As-Built Plans.
 LIVE LOAD: For New Members: HL-93
 For Existing Members: See 1939 As-Built Plans
 STRUCTURAL STEEL: ASTM A709, Grade 50T3, Fy = 50,000 psi
 TIMBER: New: Douglas Fir, No. 2 & Better, S4S
 Deck: Douglas Fir, No. 2
 BOLTS: A307, Hot Dip Galvanized

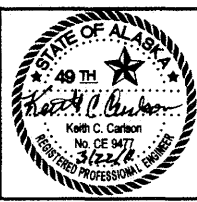
ABBREVIATIONS:

- | | |
|--|--|
| <ul style="list-style-type: none"> ℄ = Centerline ℄ = Plate & = and @ = at ∅ = diameter (E) = existing A/C = asphalt concrete Approx. = approximate Abut. = Abutment ASTM = American Society for Testing and Materials bot. = bottom Br. = bridge btwn. = between Brg. = Bearings C.I.P. = cast in place C.P. = complete joint penetration Clr. = clear, clearance cms = cubic meter per second dia. = diameter D.H.W. = Design High Water Dwg. = drawing Elev. = elevation e.f. = each face E = expansion bearing | <ul style="list-style-type: none"> F = fixed bearing f.f. = far face Hwy. = highway Jt. = joint Lt. = left max. = maximum min. = minimum n.a. = not applicable n.f. = near face No. = number N/C = not calculated O.H.W. = ordinary high water R.O.W. = right of way Rt. = right S.I.P. = stay in place spc. = space, spaces Sta. = station Symm. = symmetric Typ. = typical UT = ultrasonic testing Yr. = year |
|--|--|


Project As-Built Drawings have been reviewed by the Project Engineer and represent to the best of my knowledge, the project as constructed.
 PE *Kraig Norheim* Date 4/10/11

DESIGNED BY: <i>Keith Carlson</i>	CHECKED: <i>Jared Lovings</i>
DRAWN BY: <i>Sam Saffie</i>	CHECKED: <i>Keith Carlson</i>
QUANTITIES BY: <i>Keith Carlson</i>	CHECKED: <i>Keith Carlson</i>

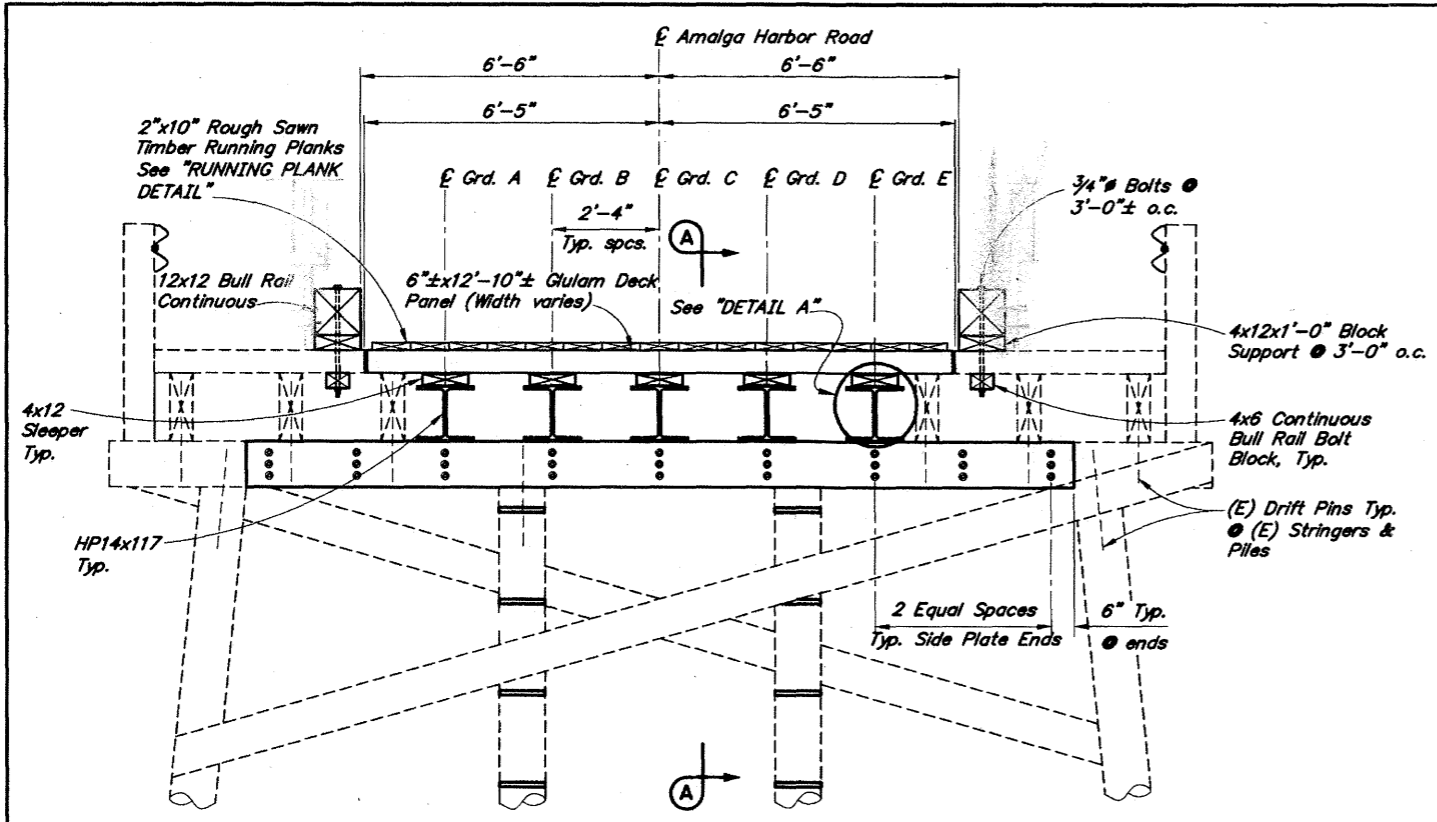
STATE OF ALASKA
 DEPARTMENT OF TRANSPORTATION
 AND PUBLIC FACILITIES
 BRIDGE SECTION



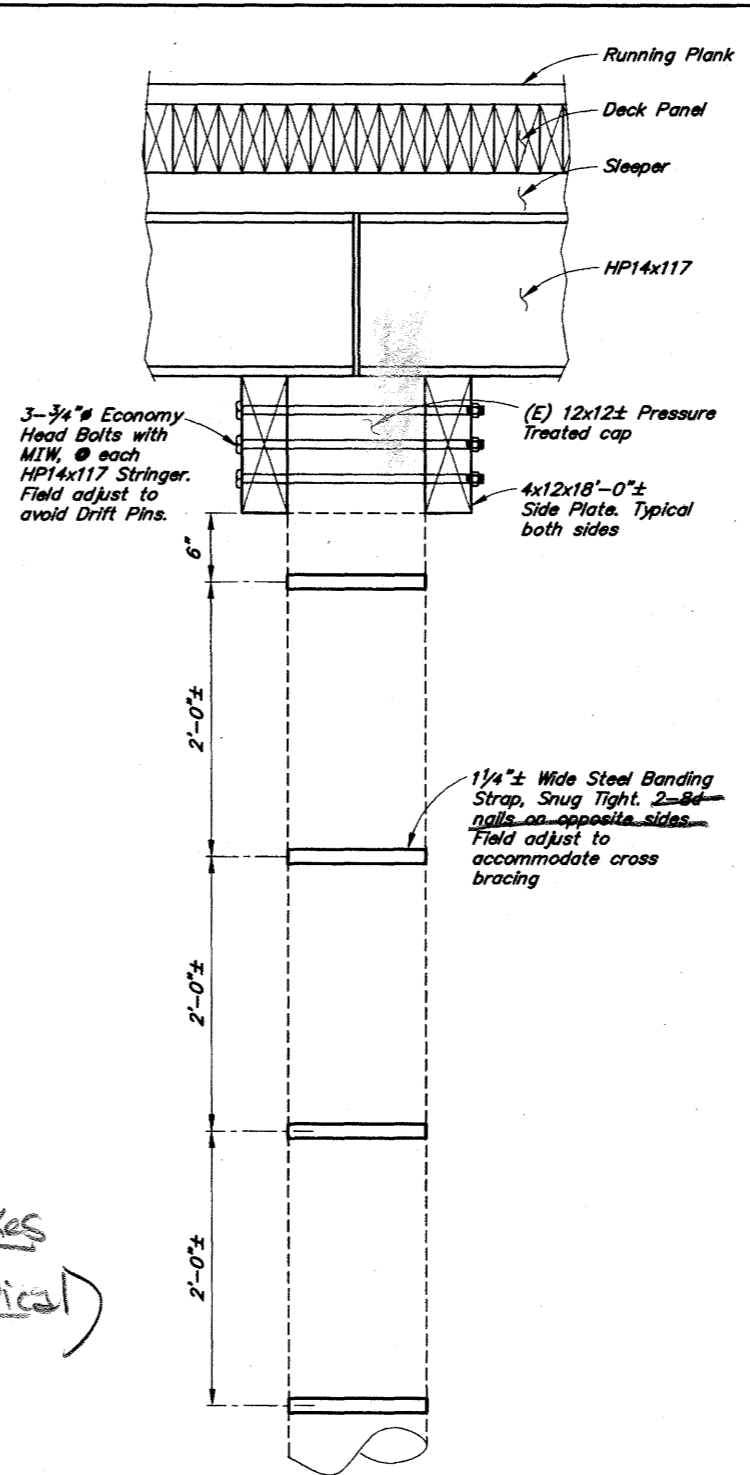
PETERSON CREEK BRIDGE
 AMALGA HARBOR ROAD
FRAMING PLAN


 BRIDGE NO. 383
 DWG. NO. 2

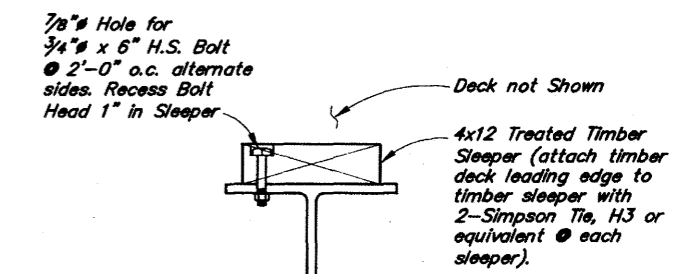
STATE	PROJECT DESIGNATION	YEAR	SHEET NO.	TOTAL SHEETS
ALASKA		2010	3	4



TYPICAL SECTION
 12 6 0 1 2 3 4
 In. Feet

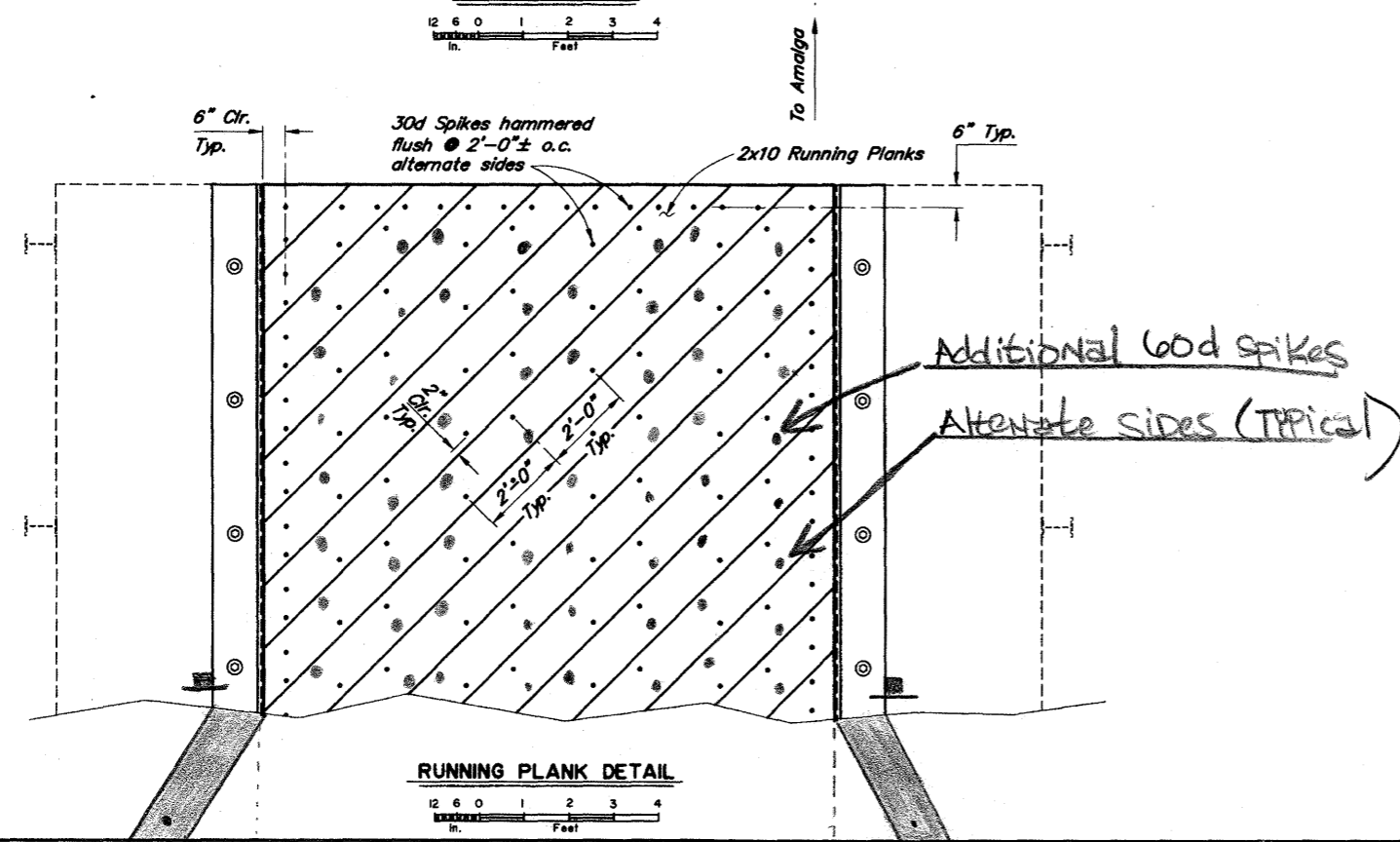


SECTION A-A
 12 6 0 1 2 3 4
 In. Feet



DETAIL A
 12 6 0 1 2 3 4
 In. Feet

BANDED PILES	
BENT	PILES
2	2 & 3
3	2 & 3
4	2 & 3

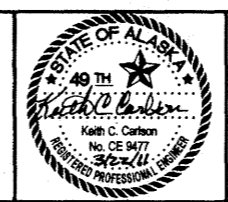


RUNNING PLANK DETAIL
 12 6 0 1 2 3 4
 In. Feet


Project As-Built Drawings have been reviewed by the Project Engineer and represent to the best of my knowledge, the project as constructed.
 PE Klaus Niekem Date 4/19/11
for JH

DESIGNED BY: <i>Keith Carlson</i>	CHECKED: <i>Jared Lovings</i>
DRAWN BY: <i>Sam Sallis</i>	CHECKED: <i>Keith Carlson</i>
QUANTITIES BY: <i>Keith Carlson</i>	CHECKED: <i>Keith Carlson</i>

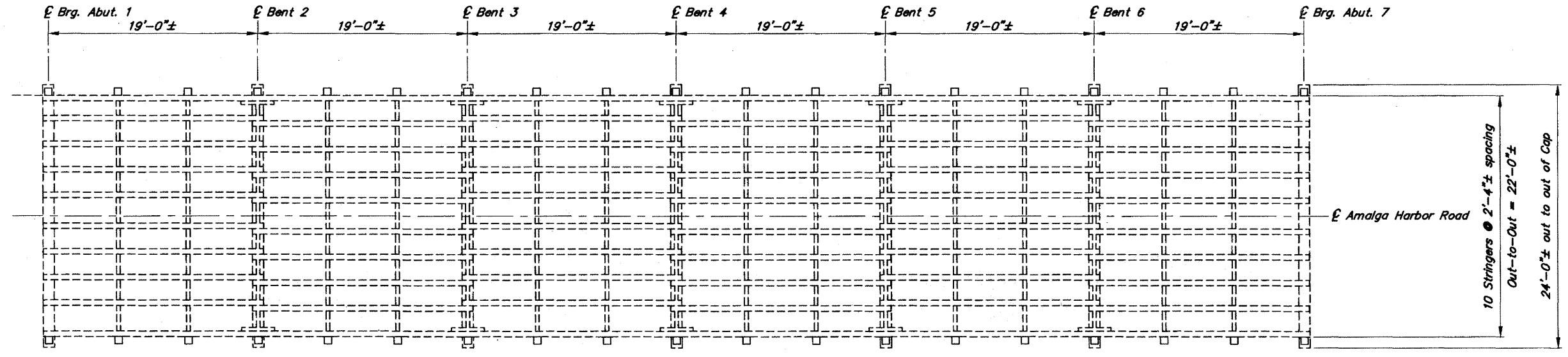
STATE OF ALASKA
 DEPARTMENT OF TRANSPORTATION
 AND PUBLIC FACILITIES
 BRIDGE SECTION



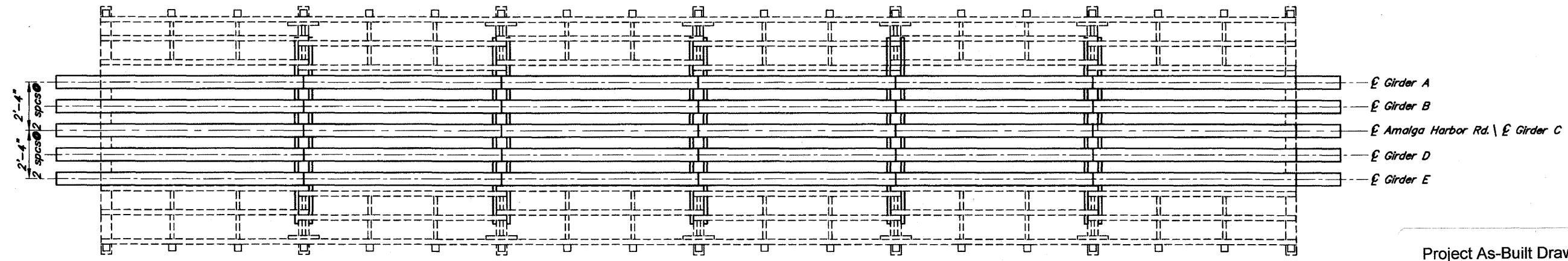
PETERSON CREEK BRIDGE
 AMALGA HARBOR ROAD
 TYPICAL SECTION


 BRIDGE NO. 383
 DWG. NO. 3

STATE	PROJECT DESIGNATION	YEAR	SHEET NO.	TOTAL SHEETS
ALASKA		2010	4	4



EXISTING FRAMING PLAN



FRAMING PLAN




Project As-Built Drawings have been reviewed by the Project Engineer and represent to the best of my knowledge, the project as constructed.
 PE Kathy Neheim Date 4/19/11
for JLS for

DESIGNED BY: <i>Keith Carlson</i>	CHECKED: <i>Jared Lovings</i>
DRAWN BY: <i>Sam Sallis</i>	CHECKED: <i>Keith Carlson</i>
QUANTITIES BY: <i>Keith Carlson</i>	CHECKED:

STATE OF ALASKA
 DEPARTMENT OF TRANSPORTATION
 AND PUBLIC FACILITIES
 BRIDGE SECTION



PETERSON CREEK BRIDGE
 AMALGA HARBOR ROAD
 FRAMING PLAN


 BRIDGE NO. 383
 DWG. NO. 4