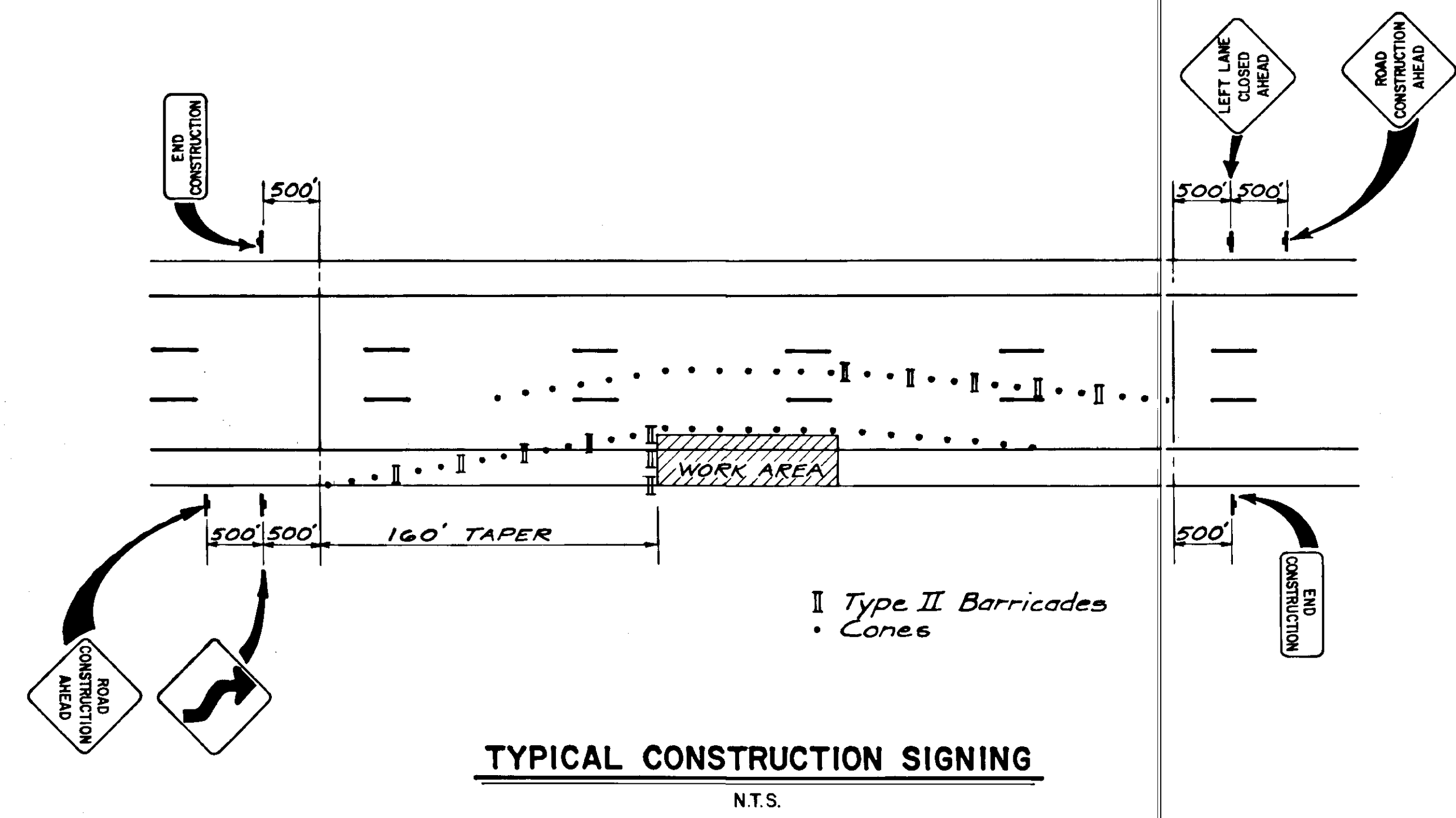


STATE	PROJECT DESIGNATION	YEAR	SHEET NO.	TOTAL SHEETS
ALASKA	RS-M-0966 (17) 69331	1987	2	4

ESTIMATE OF QUANTITIES

ITEM NO.	ITEM	UNIT	QUANTITY
109 (2)	DBE and WBE Adjustments	C5	All Req'd
110 (1)	Mobilization	L5	All Req'd
114 (1)	Construction Surveying by the Contractor	L5	All Req'd
115 (1)	Traffic Control	L5	All Req'd
660 (3)	Highway Lighting System Complete	L5	All Req'd
660 (9)	Misc. Electrical Work	L5	All Req'd

TRAFFIC CONTROL PLAN

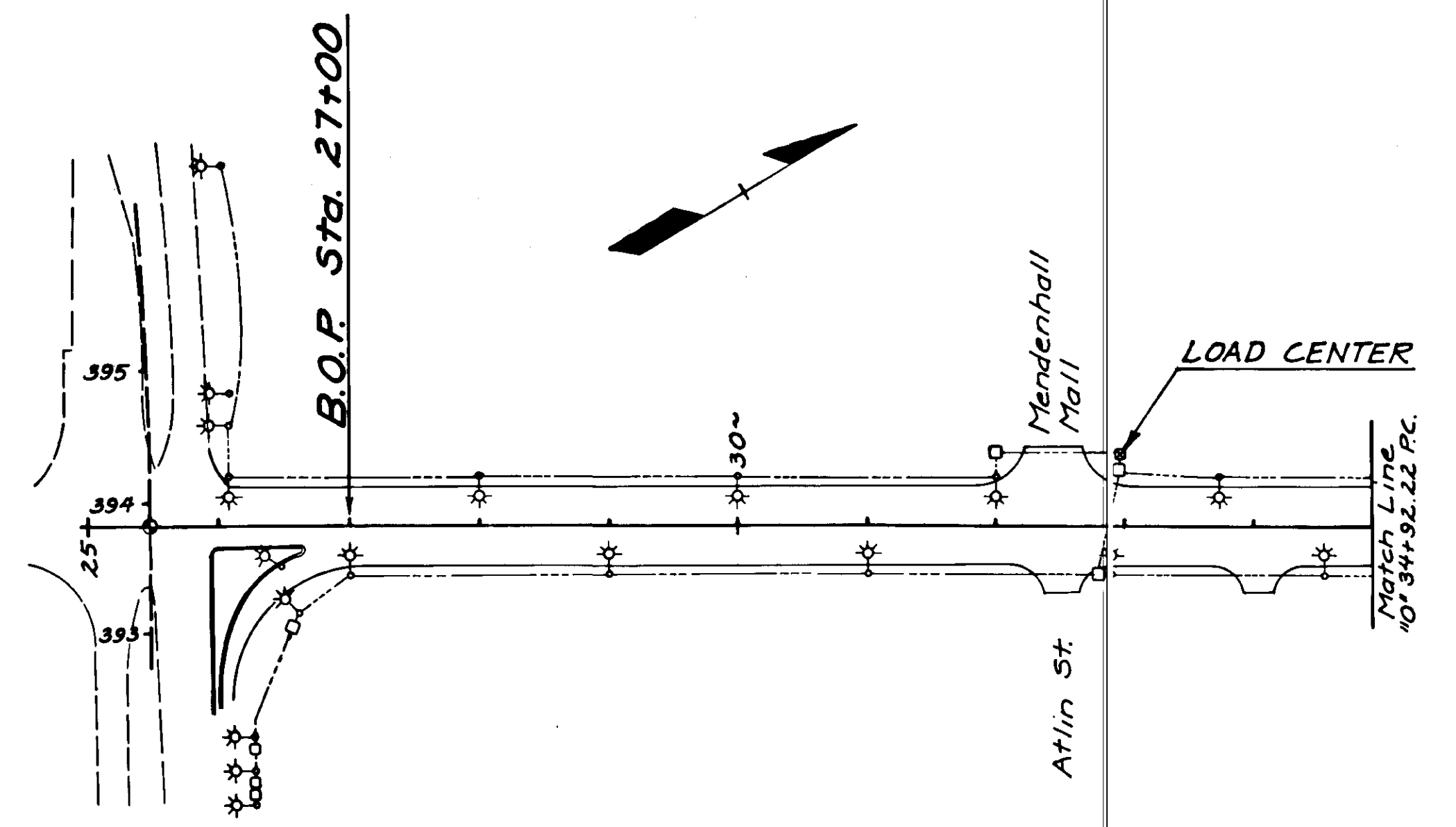


- #### TRAFFIC CONTROL NOTES
- The Contractor shall schedule his operations so that there are no delays to Southbound traffic between the hours of 7 A.M. to 8 A.M. nor to Northbound traffic between the hours of 4 P.M. to 6 P.M.
 - The Contractor will be responsible for repair to any damage of asphalt pavement caused by his operations.

GENERAL NOTES

- Locations shown are approximate, and are subject to minor field adjustment by the engineer.
- All luminaires shall be 240V medium distribution semi-cutoff type II high pressure sodium, with filtered optics, and will be of the wattage shown in the tables.
- Footings for luminaire poles shall be cast-in-drilled-holes type II.
- State Furnished Materials:

- 110 Luminaires (150W)
- 5 Luminaires (250W)
- 9 Poles & Masts



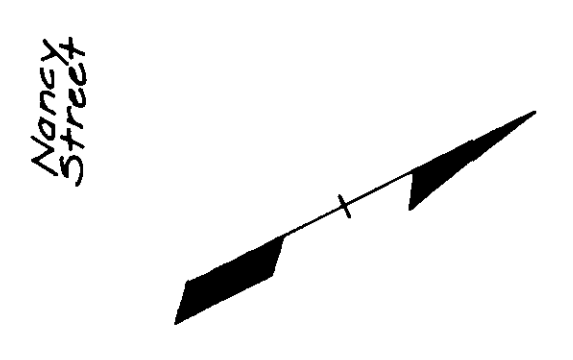
STATION	OFFSET		LUMINAIRE/WATTS		REMARKS
	Lt.	Rt.	EXIST.	PROPOSED	
"0" 27+00		37'	400	150	
"0" 28+00	37'		400	150	
"0" 29+00		37'	400	150	
"0" 30+00	37'		400	150	
"0" 31+00		37'	400	150	
"0" 32+00	37'		400	150	
"0" 32+90		37'	400	150	
"0" 33+72	37'		400	150	
"0" 34+54		37'	400	150	



STATION	OFFSET		LUMINAIRE/WATTS		REMARKS
	Lt.	Rt.	EXIST.	PROPOSED	
"0" 35+36	37'		400	150	
"0" 36+18	37'	37'	400	150	
"0" 37+01	37'		400	150	
"0" 37+81		37'	400	150	Install pole
"0" 38+96	37'		400	150	
"0" 40+12		37'	400	150	
"0" 41+28	37'		400	150	
"0" 42+44		37'	400	150	
"0" 43+60	37'		400	150	
"0" 44+54		37'	400	150	
"0" 45+55	37'		400	150	
"0" 46+56		37'	400	150	
"0" 47+57	37'		400	150	
"0" 48+58		37'	400	150	
"0" 49+59	37'		400	150	

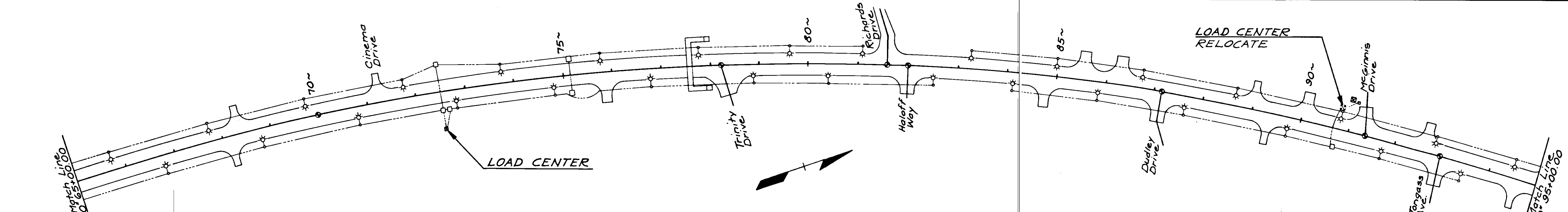
Anchor bolts damaged
No Slip Base
(E.W.O. No.1)

LOAD CENTER



STATION	OFFSET		LUMINAIRE/WATTS		REMARKS
	Lt.	Rt.	EXIST.	PROPOSED	
"0" 50+60		37'	400	150	
"0" 51+61	37'		400	150	
"0" 52+62		37'	400	150	
"0" 53+63	37'		400	150	
"0" 54+64		37'	400	150	
"0" 55+65	37'		400	150	
"0" 56+66		37'	400	150	
"0" 57+67	37'		400	150	
"0" 58+68		37'	400	150	
"0" 59+69	37'		400	150	Install pole & footing *
"0" 60+70		37'	400	150	Install pole
"0" 61+71	37'		400	150	
"0" 62+72		37'	400	150	
"0" 63+73	37'		400	150	
"0" 64+74		37'	400	150	Missing & Replaced (E.W.O. No.1)

* Existing footing not located

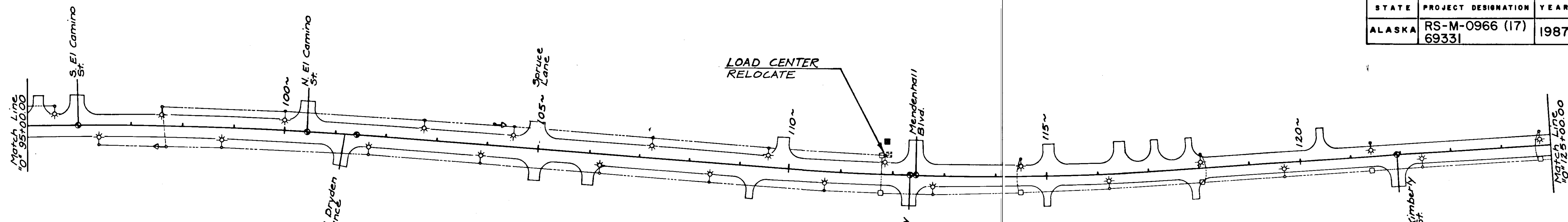


STATION	OFFSET		LUMINAIRE/WATTS		REMARKS
	Lt.	Rt.	EXIST.	PROPOSED	
"0" 65+75	37'		400	150	
"0" 66+76		37'	400	150	
"0" 67+77	37'		400	150	
"0" 68+78		37'	400	150	
"0" 69+78	37'		400	150	
"0" 70+78		37'	400	150	
"0" 71+78	37'		400	150	
"0" 72+78		37'	400	150	
"0" 73+78	37'		400	150	
"0" 74+78		37'	400	150	
"0" 75+78	37'		400	150	
"0" 76+78		37'	400	150	Missing & Replaced (E.W.O. No.1)
"0" 77+78	37'		400	150	
"0" 78+78		37'	400	150	
"0" 79+63	37'		400	150	

* NOTE
Existing load center to be relocated
to a point behind the bikepath at a
location approved by the Engineer.

STATION	OFFSET		LUMINAIRE/WATTS		REMARKS
	Lt.	Rt.	EXIST.	PROPOSED	
"0" 80+41		37'	400	150	
"0" 81+10	37'		400	150	Anchor bolts damaged
"0" 82+51		37'	400	150	No Slip base
"0" 83+24	37'		400	150	Install pole & footing *
"0" 84+11		37'	400	150	(E.W.O. No. 1)
"0" 84+98	37'		400	150	
"0" 85+85		37'	400	150	Install pole Anchor
"0" 86+73	37'		400	150	bolts damaged
"0" 87+65		37'	400	150	(E.W.O. No.1)
"0" 88+64	37'		400	150	
"0" 89+75		37'	400	150	
"0" 90+80	37'		400	150	Relocate load center *
"0" 91+75		37'	400	150	
"0" 92+80	37'		400	150	
"0" 93+45		37'	400	150	
"0" 94+47	37'		400	150	

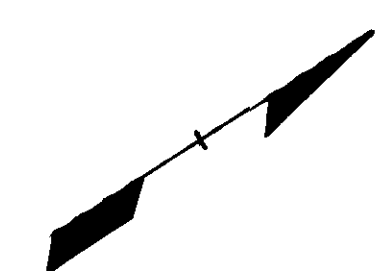
* Existing footing not located



STATION	OFFSET		LUMINAIRE/WATTS		REMARKS
	Lt.	Rt.	EXIST.	PROPOSED	
"0" 95+53	37'		400	150	
"0" 96+38	37'	37'	400	150	Install pole
"0" 97+58	37'		400	150	
"0" 98+78		37'	400	150	
"0" 100+00	37'		LPS	LPS	To remain
"0" 101+67		37'	LPS	LPS	To remain
"0" 102+78	37'		400	150	
"0" 103+88		37'	400	150	
"0" 104+45	37'		150	150	Install pole & footing †
"0" 106+22		37'	400	150	
"0" 107+24	37'		400	150	
"0" 108+42		37'	400	150	
"0" 109+56	37'		400	150	

slip base bolts missing (E.W.O. No. 1)

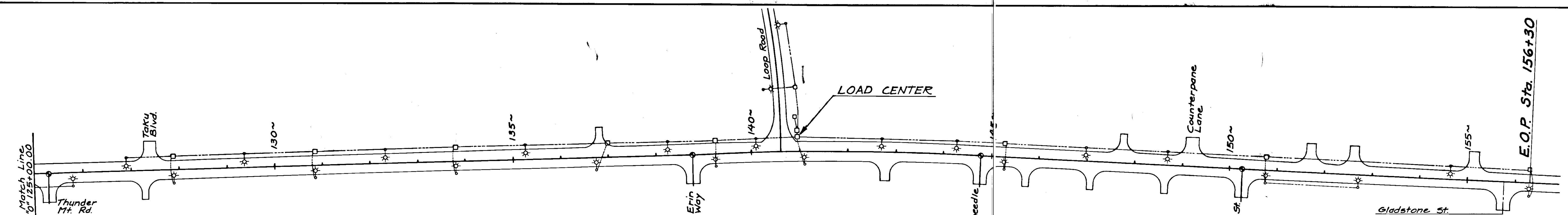
LOAD CENTER RELOCATE



* NOTE
Existing load center to be relocated to a point behind the bikepath at a location approved by the Engineer.

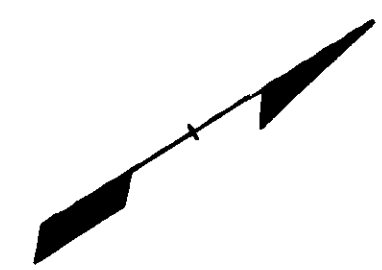
STATION	OFFSET		LUMINAIRE/WATTS		REMARKS
	Lt.	Rt.	EXIST.	PROPOSED	
"0" 110+70		37'	400	150	
"0" 111+84	37'		400	150	Relocate load center *
"0" 112+78		37'	400	150	
"0" 114+50	32'		250	150	
"0" 116+23		29'	250	150	
"0" 118+06	27'		250	150	
"0" 119+69		27'	250	150	
"0" 121+42	27'		400	150	
"0" 122+42		27'	400	250	
"0" 124+78	27'		400	250	

† Existing footing not located



STATION	OFFSET		LUMINAIRE/WATTS		REMARKS
	Lt.	Rt.	EXIST.	PROPOSED	
"0" 125+78		27'	400	150	
"0" 126+89	27'		400	150	
"0" 127+89		27'	400	150	
"0" 129+37	27'		250	150	Install pole
"0" 130+85		27'	250	150	
"0" 132+33	27'		250	150	
"0" 133+81		27'	250	150	
"0" 135+29	27'		250	150	Install pole
"0" 136+77		27'	250	150	
"0" 138+26	27'		400	150	

No slip base (E.W.O. No. 1)
Anchor bolts damaged
No slip base



STATION	OFFSET		LUMINAIRE/WATTS		REMARKS
	Lt.	Rt.	EXIST.	PROPOSED	
"0" 139+26		27'	250	150	
"0" 140+10	27'		400	150	
"0" 140+26		128'	250	150	On Loop Rd.
"0" 140+76		265'	250	150	On Loop Rd.
"0" 141+10		27'	400	150	
"0" 142+70	27'		250	150	
"0" 144+27	27'		400	150	
"0" 145+27		27'	400	150	
"0" 146+98	27'		250	150	
"0" 148+69	27'		400	250	
"0" 150+78		27'	400	250	
"0" 152+71		27'	250	250	
"0" 154+65	27'		250	150	
"0" 156+30		27'	250	150	

E.O.P. Sta. 156+30