

State of Alaska

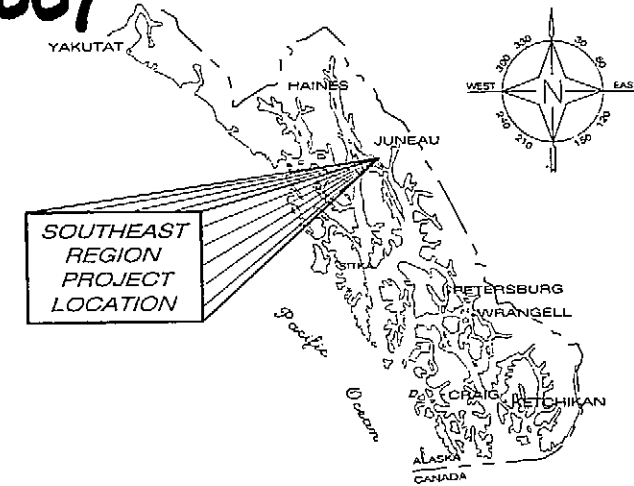
Department of Transportation
and Public Facilities
Southeast Region

As-Built Plans
Contractor: **Trucano Co.**
Project Engr: **Al Culbreath**
Begin Constr: **Dec. 6, 2007**
End Constr: **Dec. 20, 2007**

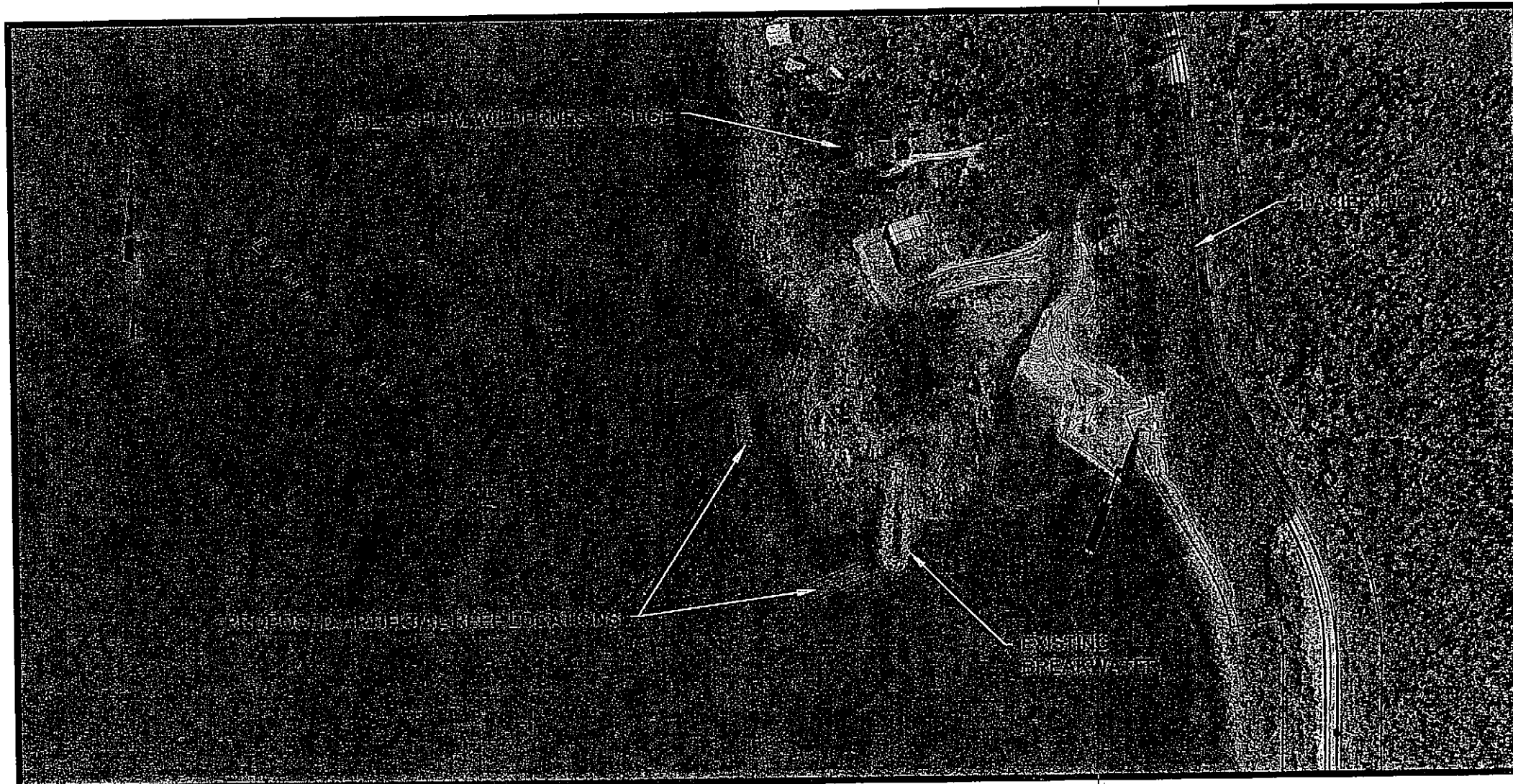
JUNEAU, ALASKA YANKEE COVE ARTIFICIAL REEFS

PROJECT NO. NH-0003(130) ~ 69221

INDEX	
SHEET NO.	DESCRIPTION
A1	TITLE SHEET
B1	PLAN
C1	ESTIMATE OF QUANTITIES & DETAILS
D1	RIGHT OF WAY



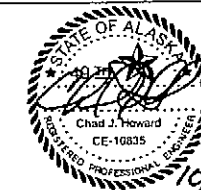
LOCATION MAP



PATH: Q:\NH0003(130)\PLANSET\A1_TITLE SHEET.DWG TAB:A1

Friday, October 12, 2007 10:29:12 AM
PLOT: PSPACE OR MSPACE: 1=1(F)

STATE OF ALASKA
DEPARTMENT OF TRANSPORTATION
& PUBLIC FACILITIES SOUTHEAST REGION



APPROVED:

Jack D. Beedle FOR
REGIONAL PRE-CONSTRUCTION ENGINEER
JACK D. BEEDLE, P.E.

10/29/07
DATE

APPROVED:

Cindy Hughes
DIRECTOR, SOUTHEAST REGION
MALCOLM A. MENZIES, P.E., L.S.

10-29-07
DATE

CERTIFIED TRUE & CORRECT AS-BUILT OF ACTUAL FIELD
CONDITION:

CONSTRUCTION PROJECT MANAGER

DATE

STATE	PROJECT DESIGNATION	YEAR	SHEET NO.	TOTAL SHEETS
ALASKA	NH-0003(130)~69221	2007	A1	4

DLESTER		
TAB: B1 Friday, July 29, 2005 11:27:44 AM		
ADDENDUM NUMBER		
ATTACHMENT NUMBER		
RECORD OF REVISIONS		
No.	DATE	DESCRIPTION

**YANKEE COVE ARTIFICIAL REEFS
PROJECT NO. 69221
PLAN**

CHECKED BY: C. HOWARD



DESIGNED BY: D. LESTER

DRAWN BY: W. HICKOK

STATE OF ALASKA
DEPARTMENT OF TRANSPORTATION
& PUBLIC FACILITIES
SOUTHEAST REGION
YANKEE COVE ARTIFICIAL REEFS
PROJECT NO. 69221

PLAN

PROJECT DESIGNATION
NH-0003(130)-69221

STATE	YEAR
ALASKA	2007
SHEET NUMBER	TOTAL SHEETS
B1	4



GRID N:2469608.473
GRID E:2449517.585
LATITUDE: 58°35'21.322"
LONGITUDE: -134°54'20.329"

As-Built Plans
 Contractor: TENCOR CO.
 Project No. 69221
 Date: Dec. 1, 2007
 EIT License No. 11697
 GRID E:24495474.10
 LATITUDE: 58°35'21.599"
 LONGITUDE: -134°54'17.765"

GRID N:2469509.059
GRID E:2449528.330
LATITUDE: 58°35'20.344"
LONGITUDE: -134°54'20.092"

GRID N:2469512.283
GRID E:2449558.154
LATITUDE: 58°35'20.381"
LONGITUDE: -134°54'19.531"

GRID N:2469268.904
GRID E:2449763.699
LATITUDE: 58°35'18.021"
LONGITUDE: -134°54'15.570"

GRID N:2469232.008
GRID E:2449670.763
LATITUDE: 58°35'17.641"
LONGITUDE: -134°54'17.310"

GRID N:2469204.127
GRID E:2449681.832
LATITUDE: 58°35'17.368"
LONGITUDE: -134°54'17.092"

GRID N:2469241.023
GRID E:2449774.769
LATITUDE: 58°35'17.748"
LONGITUDE: -134°54'15.351"

PROPOSED ARTIFICIAL REEF

EXISTING TIDELANDS LEASE BOUNDARY

EXISTING BREAKWATER

BESSIE CREEK

DO NOT SCALE FROM THESE DRAWINGS USE DIMENSIONS

Reviewed by
Colby Calhoun

HIGH TIDE LINE (HTL) = 19.7'

MEAN HIGH WATER (MHW) = 14.8'

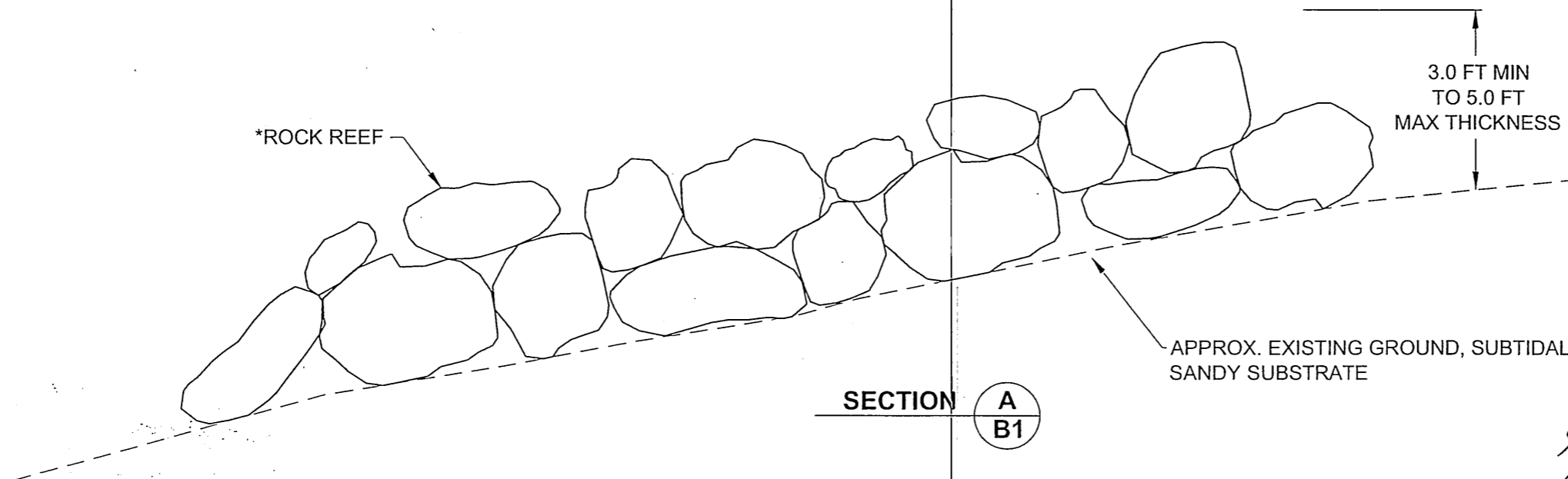
NO CONSTRUCTION ACTIVITIES PERMITTED AT TIDE LEVELS ABOVE 12.0' ELEV.

MEAN LOWER LOW WATER (MLLW) = 0.0'

ESIMATE OF QUANTITIES			
ITEM NO.	PAY ITEM	PAY UNIT	QUANTITY
650(1)	ARTIFICIAL REEFS	LUMP SUM	ALL REQUIRED

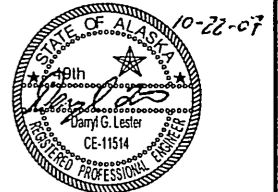
BASIS OF ESTIMATE	
ITEM	ESTIMATING FACTOR
ROCK	320 CY PER REEF 170 LB/CF
AVERAGE REEF THICKNESS 4 FT. DIMENSIONED REEF VOLUME CONSISTING OF ROCK	70%

* ARTIFICIAL REEF WILL CONSIST OF ANGULAR ROCK FILL RANGING IN SIZE FROM 1.6 FT TO 3.3 FT, MEASURED IN THE SMALLEST DIRECTION. ROCK WILL BE STACKED TWO LAYERS THICK TO MAINTAIN A RELATIVELY UNIFORM THICKNESS ACROSS THE REEF.



YANKEE COVE ARTIFICIAL REEFS
 PROJECT NO. 69221
 ESTIMATE OF QUANTITIES & DETAILS

CHECKED BY: C. HOWARD



DESIGNED BY: D. LESTER

DRAWN BY: W. HICKOK

STATE OF ALASKA
 DEPARTMENT OF TRANSPORTATION
 & PUBLIC FACILITIES
 SOUTHEAST REGION

YANKEE COVE ARTIFICIAL REEFS
 PROJECT NO. 69221

ESTIMATE OF QUANTITIES & DETAILS

PROJECT DESIGNATION
 NH-0003(130)-69221

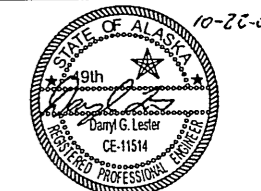
STATE	YEAR
ALASKA	2007
SHEET NUMBER	TOTAL SHEETS
C1	4

DO NOT SCALE FROM THESE DRAWINGS USE DIMENSIONS

RECORD OF REVISIONS		
No.	DATE	DESCRIPTION

**YANKEE COVE ARTIFICIAL REEFS
PROJECT NO. 69221
RIGHT OF WAY**

CHECKED BY: C. HOWARD



DESIGNED BY: D. LESTER

DRAWN BY: W. HICKOK

STATE OF ALASKA
DEPARTMENT OF TRANSPORTATION
& PUBLIC FACILITIES
SOUTHEAST REGION
YANKEE COVE ARTIFICIAL REEFS
PROJECT NO. 69221

RIGHT OF WAY

PROJECT DESIGNATION
NH-0003(130)-69221

STATE	YEAR
ALASKA	2007

SHEET NUMBER	TOTAL SHEETS
D1	4

ACCESS & PARKING

USS 571
LOT P.1B
DESIGNATED
PARKING
AREA

ASLS 96-37

ARTIFICIAL REEFS

DOCK WHERE 12' TIDE
ELEVATION WILL BE MARKED

DO NOT SCALE FROM THESE DRAWINGS. USE DIMENSIONS