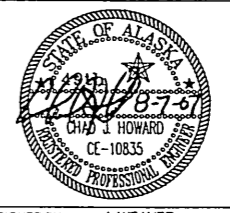


- LEGENDS:**
- ① EXISTING GROUND
  - ② 2" ASPHALT CONCRETE, TYPE II, CLASS B.
  - ③ STE-1 TACK COAT
  - ④ 2" DEEP PAVEMENT COLD PLANE AND FILL WITH 2" ATB
  - ⑤ EXISTING PAVEMENT
  - ⑥ LINEAR GRADING

- NOTES:**
1. ACTUAL LENGTH AND LOCATIONS OF COLD PLANING TO BE DETERMINED BY THE ENGINEER. SEE TABLE ON SHEET C1 FOR APPROXIMATE LOCATIONS.
  2. SUPERELEVATION SHALL MATCH EXISTING.
  3. PRIOR TO PAVING, TACK COAT ALL PAVEMENT EDGES AND PAVEMENT SURFACES

DO NOT SCALE FROM THESE DRAWINGS USE DIMENSIONS

CHECKED BY: D. LESTER 		STATE OF ALASKA DEPARTMENT OF TRANSPORTATION & PUBLIC FACILITIES SOUTHEAST REGION  GLACIER HIGHWAY, HAMILTON DRIVE TO FRITZ COVE ROAD PAVEMENT REHABILITATION							
DESIGNED BY: J. WEAVER DRAWN BY: B. ELIAS		<b>TYPICAL SECTION</b>							
PATH: O:\Jnu\69045\Planset\B_TYPICAL_SECTION5.dwg TAB: Mon, 06/Aug/07 01:51PM jmweaver		PROJECT NUMBER 69045	YEAR 2007						
REVISIONS <table border="1"> <thead> <tr> <th>NO.</th> <th>DATE</th> <th>DESCRIPTION</th> </tr> </thead> <tbody> <tr> <td> </td> <td> </td> <td> </td> </tr> </tbody> </table>		NO.	DATE	DESCRIPTION				SHEET NO. B1	TOTAL SHEETS 8
NO.	DATE	DESCRIPTION							

Project As-Built Drawings have been reviewed by the Project Engineer and represent to the best of my knowledge, the project as constructed.  
 PE *[Signature]* Date *6/21/07*

ESTIMATE OF QUANTITIES - BASIC BID			
ITEM NO.	ITEM	PAY UNIT	QTY.
303(3)	LINEAR GRADING	STATION	78
306(1)	ATB	TON	<del>270</del> 361
401(1)	ASPHALT CONCRETE, TYPE II; CLASS B	TON	<del>2315</del> 2425.54
401(2)	ASPHALT CEMENT, GRADE PG 58-28	TON	149 158.12
401(6)	ASPHALT PRICE ADJUSTMENT	CONTINGENT SUM	ALL REQ.
402(1)	STE-1 ASPHALT FOR TACK COAT	TON	<del>8</del> 6.66
408(1)	PAVEMENT COLD PLANING	SQUARE YARD	<del>2820</del> 2898
627(10)	ADJUSTMENT OF VALVE BOX	EACH	<del>A</del> 2
639(3)	DRIVEWAY	EACH	<del>24</del> 23
640(1)	MOBILIZATION AND DEMOBILIZATION	LUMP SUM	ALL REQ.
641(1)	EROSION AND POLLUTION CONTROL ADMINISTRATION	LUMP SUM	ALL REQ.
641(3)	TEMPORARY EROSION AND POLLUTION CONTROL	LUMP SUM	ALL REQ.
641(4)	TEMPORARY EROSION AND POLLUTION CONTROL AMENDMENTS	CONTINGENT SUM	ALL REQ.
642(1)	CONSTRUCTION SURVEYING	LUMP SUM	ALL REQ.
642(3)	THREE PERSON SURVEY PARTY	HOUR	<del>5</del> 7
642(11)	ADJUST EXISTING MONUMENT CASE	EACH	8
643(2)	TRAFFIC MAINTENANCE	LUMP SUM	ALL REQ.
643(3)	PERMANENT CONSTRUCTION SIGNS	LUMP SUM	ALL REQ.
643(15)	FLAGGING	CONTINGENT SUM	ALL REQ.
643(25)	TRAFFIC CONTROL	CONTINGENT SUM	ALL REQ.
670(1)	PAINTED TRAFFIC MARKINGS	LUMP SUM	ALL REQ.
670(8)	RECESSED PAVEMENT MARKER	EACH	<del>100</del> 80

ADDITIVE ALTERNATE 1			
ITEM NO.	ITEM	PAY UNIT	QTY.
606(5)ALT-1	REMOVING AND RECONSTRUCTING GUARDRAIL	LINEAR FOOT	50
606(7)ALT-1	RAISING EXISTING GUARDRAIL	LINEAR FOOT	600 1225
606(9)ALT-1	CONTROLLED RELEASE TERMINAL	EACH	1
606(11)ALT-1	EXTRUDER TERMINAL (ET-PLUS)	EACH	1
643(2)ALT-1	TRAFFIC MAINTENANCE	LUMP SUM	ALL REQ.
643(25)ALT-1	TRAFFIC CONTROL	CONTINGENT SUM	ALL REQ.

GUARDRAIL SUMMARY		
FROM STA	TO STA	REMARKS
69+30	<del>74+65</del> 74+65	RAISE
77+25	78+00	RAISE
78+00	78+50	REMOVE AND RECONSTRUCT
78+50	81+75	RAISE
85+66	89+41	

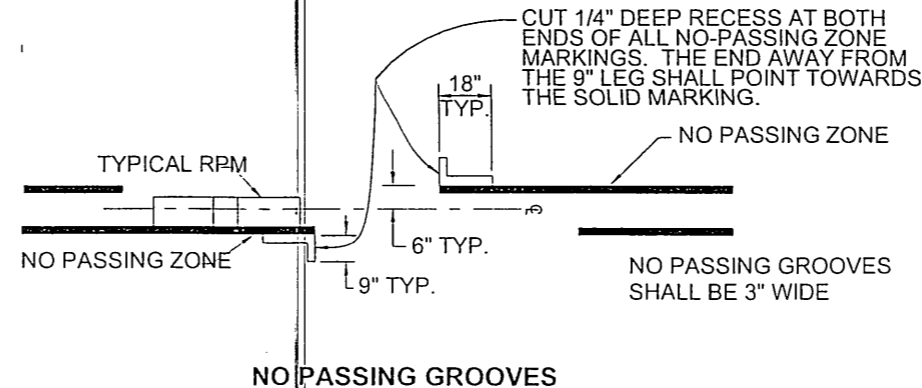
GUARDRAIL END TREATMENT	
STATION	TYPE
69+30	ET-PLUS 69+19.5 to 69+65.5
86+00	CRT

GUARDRAIL NOTE:  
THESE LOCATIONS ARE APPROXIMATE. THE ENGINEER WILL DETERMINE EXACT LOCATIONS IN THE FIELD.

STRIPING SUMMARY	
STRIPE	QUANTITY
4" SOLID WHITE	8100 LF
4" SOLID YELLOW	6200 LF
4" DASHED YELLOW	<del>1900 LF</del> 8390
18" SOLID YELLOW	40 LF
8" SOLID WHITE	340 LF
ARROW MARKINGS	3 EA
24" WHITE STOP BAR	55 LF

STRIPING AND RPM NOTES:

- EXISTING PAVEMENT MARKINGS SHALL BE REFERENCED IN THE FIELD PRIOR TO PAVEMENT REMOVAL.
- THE STRIPING QUANTITIES ARE AN APPROXIMATION OF EXISTING MARKINGS AND MAY VARY.
- LOCATIONS OF PAVEMENT MARKERS IN SITUATIONS WITH UNUSUAL GEOMETRICS WILL BE DETERMINED BY THE PROJECT ENGINEER.
- RPM QUANTITIES ARE APPROXIMATE ONLY AND MAY VARY.
- NO PASSING GROOVES ARE SUBSIDIARY TO OTHER ITEMS OF WORK.



BASIS OF ESTIMATE		
ITEM NO.	ITEM	QUANTITY
306(1)	ATB	118 LB/SQ. YD./INCH DEPTH
401(1)	ASPHALT CONCRETE, TYPE II; CLASS B	118 LB/SQ. YD./ INCH DEPTH
401(2)	ASPHALT CEMENT, GRADE PG58-28	6.0% OF ITEM 401(1); 4.5% OF ITEM 306(1)
402(1)	STE-1 ASPHALT FOR TACK COAT	0.1 GAL/SQ. YD./243 GAL/TON

COLD PLANING			
NB LANE		SB LANE	
FROM STA	TO STA	FROM STA	TO STA
50+37	<del>49+00</del> 49+00	51+44	49+70
58+25	58+55	65+75	<del>64+00</del> 66+00
75+77	74+19	76+42	74+06
78+30	77+74	79+95	83+05
80+60	85+00	81+80	85+24
82+00	86+40	83+55	88+18
89+80	UAS ENTRANCE	87+11	88+73

\*\*THIS SECTION WILL BE FULL LANE WIDTH  
COLD PLANING LOCATIONS SHALL BE FILLED WITH ATB THE SAME DAY THEY ARE COLD PLANED.

MONUMENT SUMMARY		
STATION	OFFSET	REMARKS
56+66.27	SHLD	PI
63+66.11	CL	PS
67+16.11	CL	PSC
69+68.70	CL	PCS
73+18.70	CL	PT
83+94.72 BK.		
= 83+94.71	CL	PS
AHD.		
86+94.71	CL	PSC
<del>88+66.34</del>	<del>CL</del>	<del>POG</del> Removed

Project As-Built Drawings have been reviewed by the Project Engineer and represent to the best of my knowledge, the project as constructed.  
PE *[Signature]* Date 6/24/06

Removed Monument Case hole had been filled with Asphalt.

DO NOT SCALE FROM THESE DRAWINGS USE DIMENSIONS

CHECKED BY: D. LESTER	STATE OF ALASKA DEPARTMENT OF TRANSPORTATION & PUBLIC FACILITIES SOUTHEAST REGION
DESIGNED BY: J. WEAVER	GLACIER HIGHWAY, HAMILTON DRIVE TO FRITZ COVE ROAD PAVEMENT REHABILITATION
DRAWN BY: B. ELIAS	<b>ESTIMATE OF QUANTITIES AND SUMMARIES</b>
PATH: O:\Jnu\69045\PlanSet\ESTIMATE&SUMMARY.dwg	REVISIONS
TAB: Mon, 06/Aug/07 01:54PM jmw	PROJECT NUMBER
	YEAR
	SHEET NO.
	TOTAL SHEETS
	69045
	2007
	C1
	8

DO NOT SCALE FROM THESE DRAWINGS USE DIMENSIONS

PATH:Q:\JUNI69045\PLANSET\F1\_PLAN.DWG

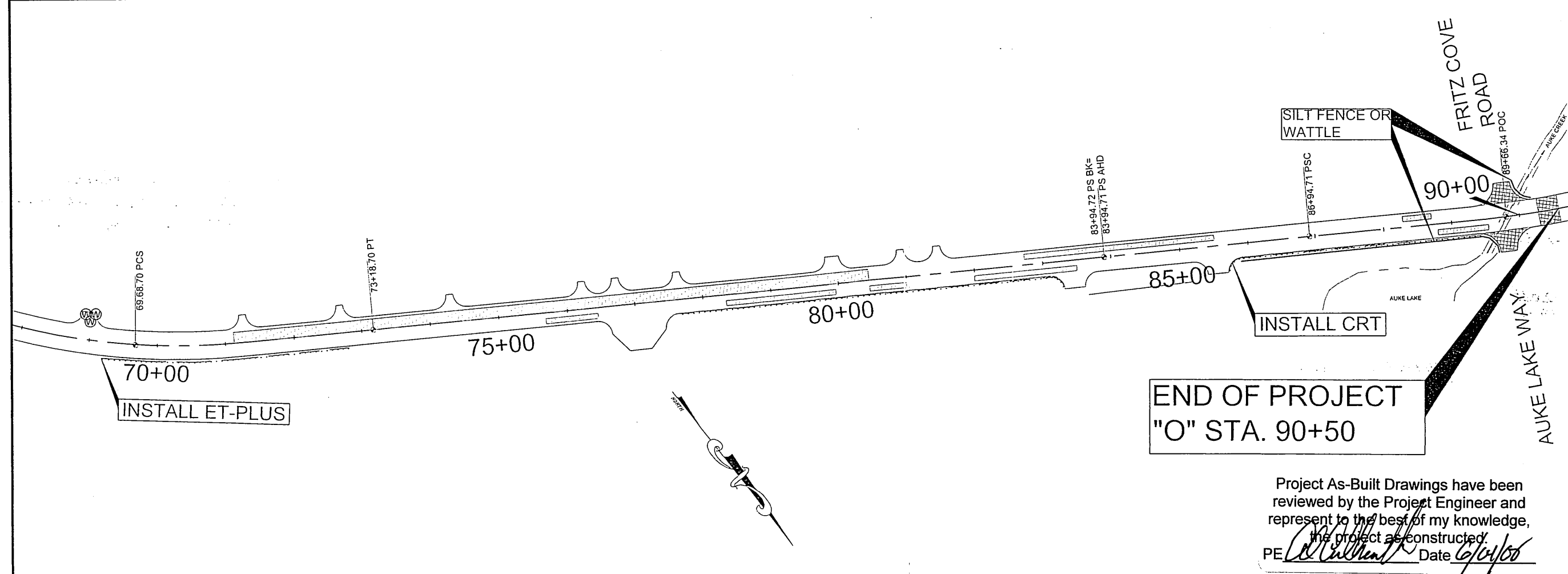
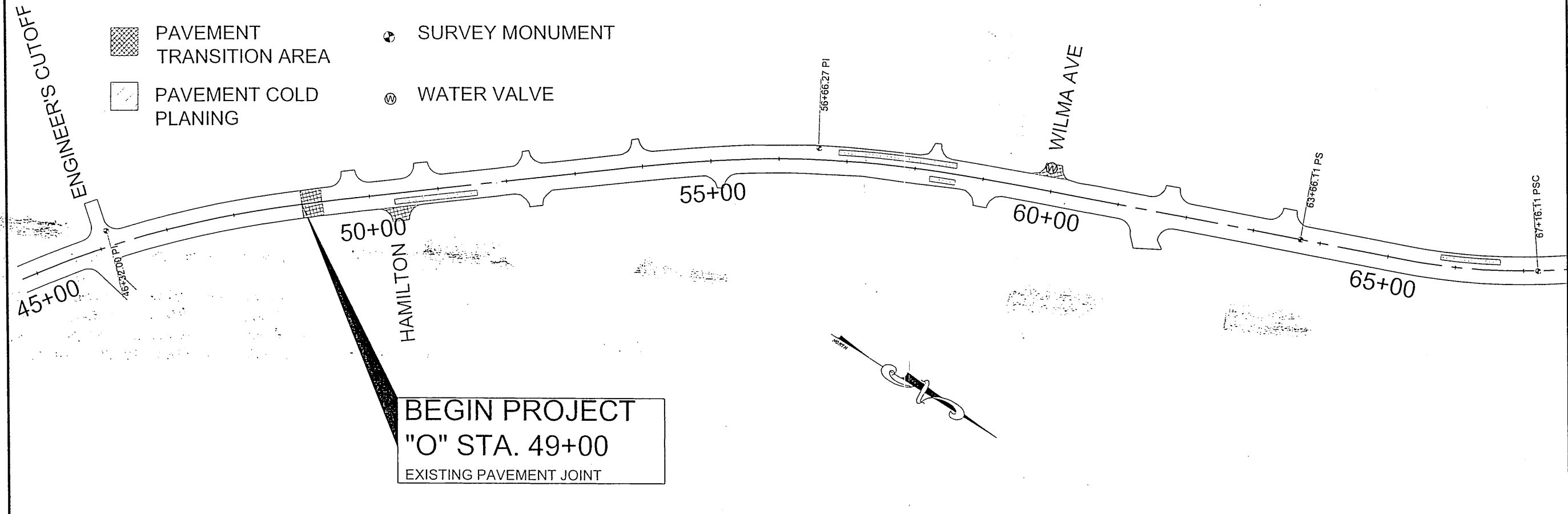
JMWEAVER  
TAB: F1 Friday, July 29, 2005 11:27:44 AM

ADDENDUM NUMBER

ATTACHMENT NUMBER

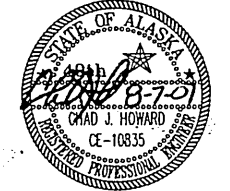
RECORD OF REVISIONS

No.	DATE	DESCRIPTION



PLAN LEGEND

CHECKED BY: D. LESTER



DESIGNED BY: J. WEAVER

DRAWN BY: B. ELIAS

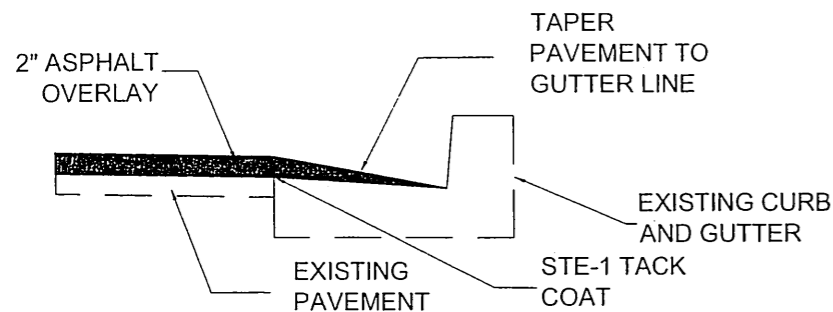
STATE OF ALASKA  
DEPARTMENT OF TRANSPORTATION  
& PUBLIC FACILITIES  
SOUTHEAST REGION

GLACIER HIGHWAY, HAMILTON  
DRIVE TO FRITZ COVE ROAD  
PAVEMENT REHABILITATION

PLAN AND ESCP

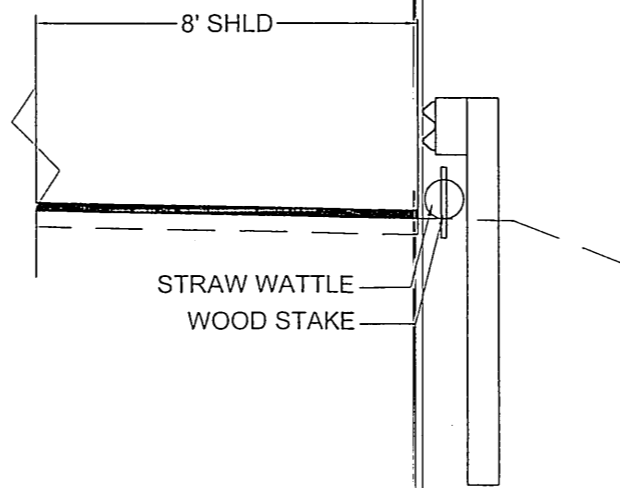
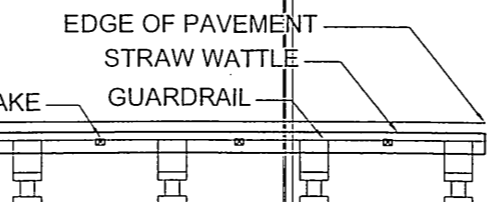
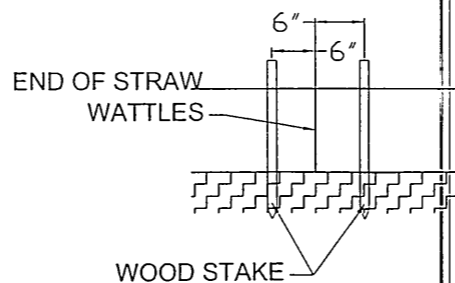
PROJECT DESIGNATION	
69045	
STATE	YEAR
ALASKA	2007
SHEET NUMBER	TOTAL SHEETS
F1	8

Project As-Built Drawings have been reviewed by the Project Engineer and represent to the best of my knowledge, the project as constructed.  
PE *[Signature]* Date 6/29/07



**CURB AND GUTTER TAPER**

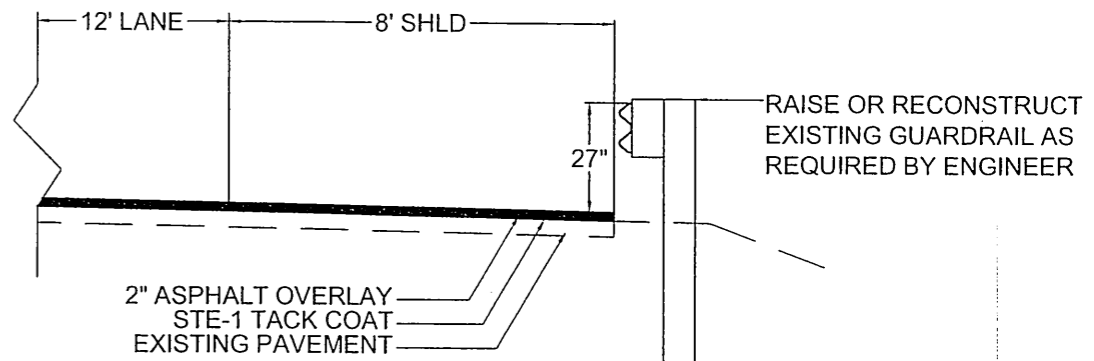
AUKE LAKE PARKING LOT



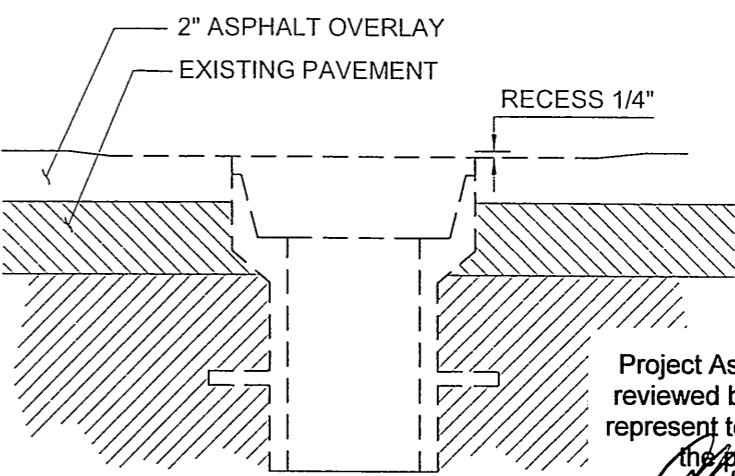
**WATTLE DETAILS**

WATTLE NOTES:

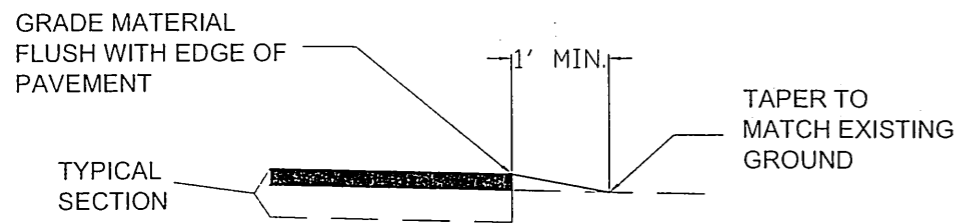
1. STRAW WATTLES SHALL BE MANUFACTURED FROM RICE STRAW AND WRAPPED IN TUBULAR PLASTIC NETTING.
2. THE NETTING SHALL HAVE A STRAND THICKNESS OF 0.03 INCH, A KNOT THICKNESS OF 0.055 INCH, AND SHALL HAVE 1% COLOR FOR UV INHIBITION.
3. STRAW WATTLES SHALL BE 9" DIAMETER (+/- 1") AND CONTAIN A MINIMUM 1.4 LB/FT OF RICE STRAW.
4. STRAW WATTLES SHALL BE PLACED ON CONTOUR AND STAKED WITH 18" WOOD STAKES A MAXIMUM OF 6'-3" O.C. THE ENDS OF ADJACENT STRAW WATTLES SHALL BE ABUTTED TO EACH OTHER SNUGLY AND STAKED AS DETAILED ABOVE.



**GUARDRAIL TYPICAL SECTION**



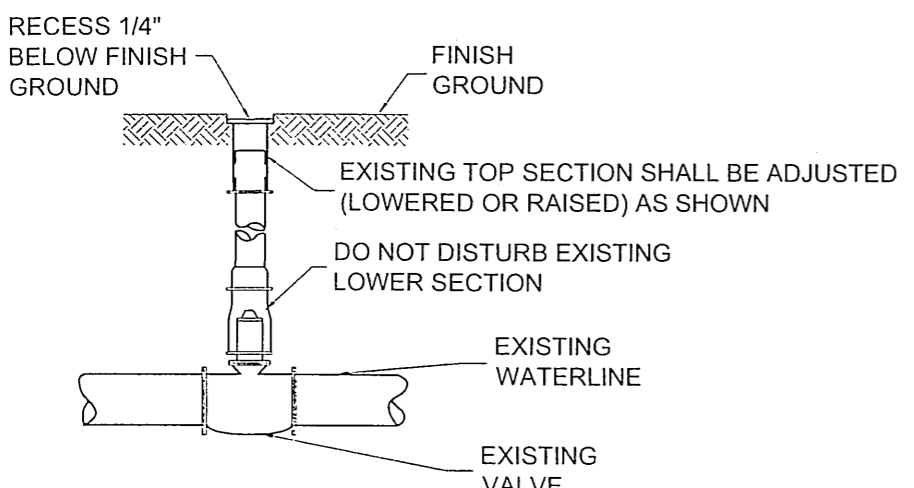
**MONUMENT ADJUSTMENT DETAIL**



**LINEAR GRADING**

LEFT AND RIGHT EDGE OF PAVEMENT

1. MATERIAL FOR LINEAR GRADING SHALL MATCH THE REQUIREMENTS OF AGGREGATE BASE COURSE D-1 OR RAM
2. LINEAR GRADING SHALL BE PAID FOR UNDER ITEM 303(3).

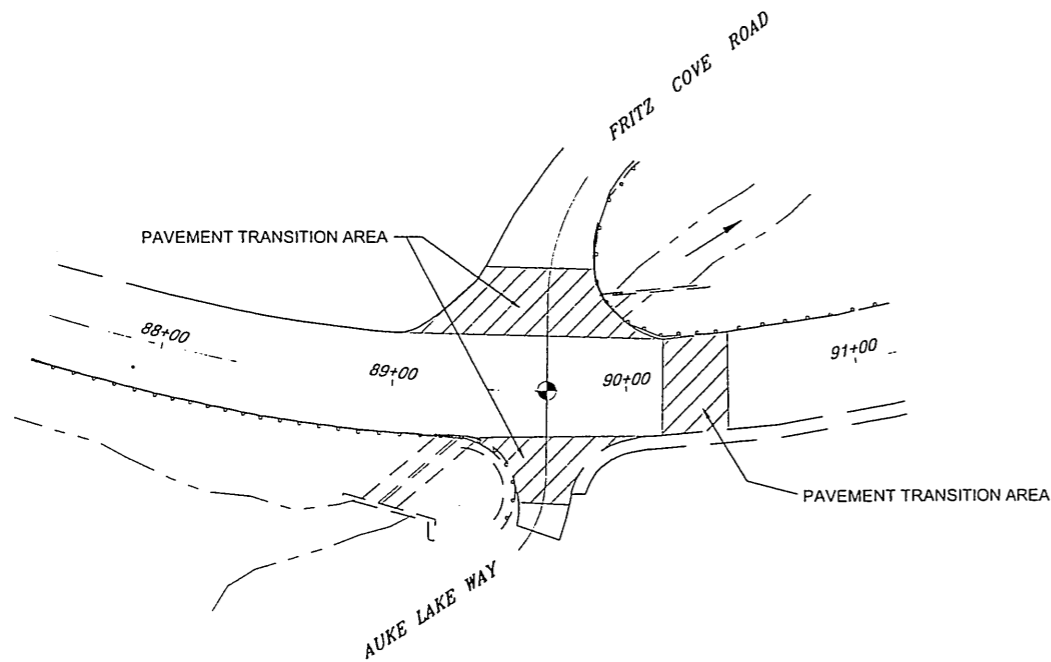


**VALVE BOX ADJUSTMENT DETAIL**

Project As-Built Drawings have been reviewed by the Project Engineer and represent to the best of my knowledge, the project as constructed.  
 PE *[Signature]* Date 6/04/08

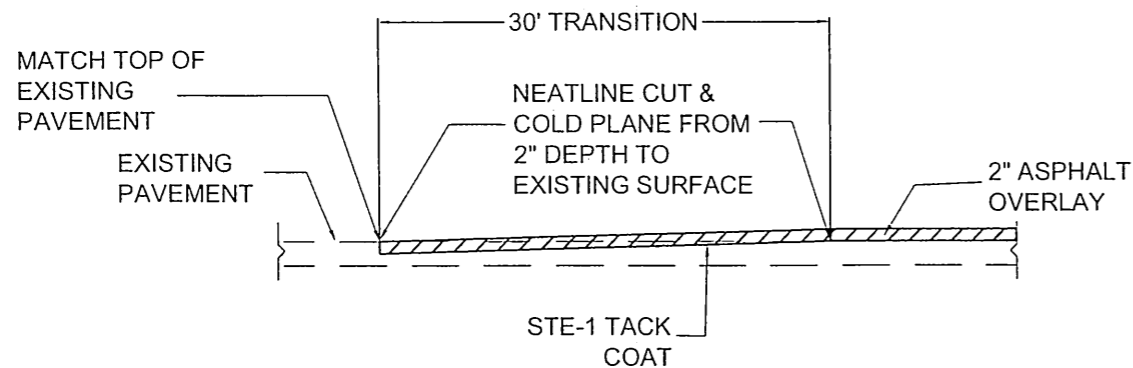
DO NOT SCALE FROM THESE DRAWINGS USE DIMENSIONS

CHECKED BY: D. LESTER		STATE OF ALASKA DEPARTMENT OF TRANSPORTATION & PUBLIC FACILITIES SOUTHEAST REGION	
DESIGNED BY: J. WEAVER		GLACIER HIGHWAY, HAMILTON DRIVE TO FRITZ COVE ROAD PAVEMENT REHABILITATION	
DRAWN BY: B. ELIAS		<b>DETAILS</b>	
PATH: O:\Jnu\69045\PlanSet\DETAILS.dwg		PROJECT NUMBER: 69045	
TAB: Tue, 07/Aug/07 08:26AM		YEAR: 2007	
REVISIONS		SHEET NO. J1	
NO.	DATE	DESCRIPTION	TOTAL SHEETS: 8



**FRITZ COVE INTERSECTION DETAIL**

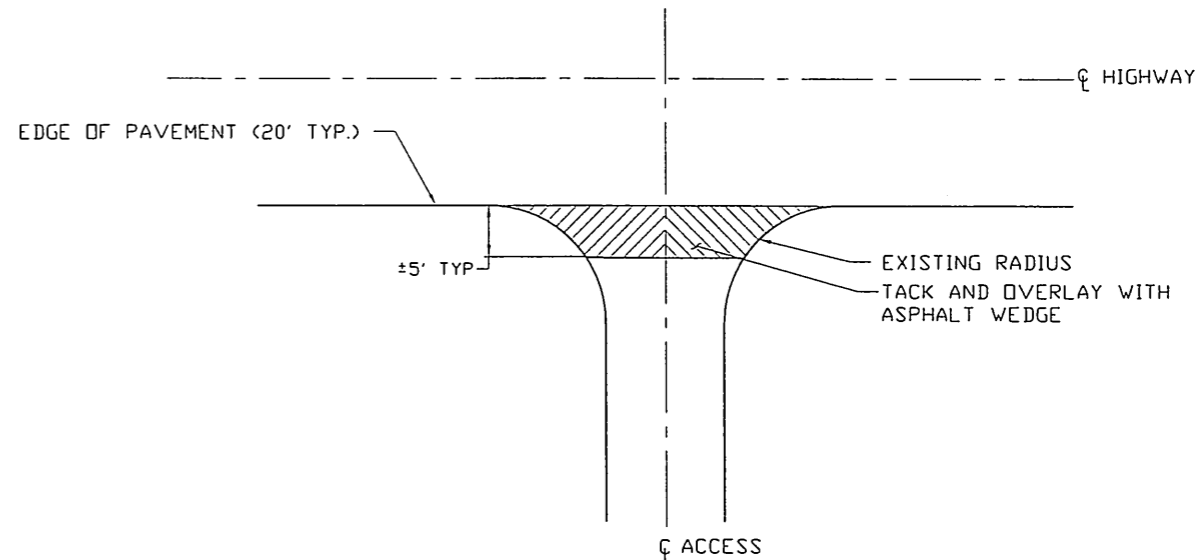
THE ENGINEER WILL DETERMINE THE LOCATION AND DIMENSIONS OF PAVEMENT TRANSITION AREAS



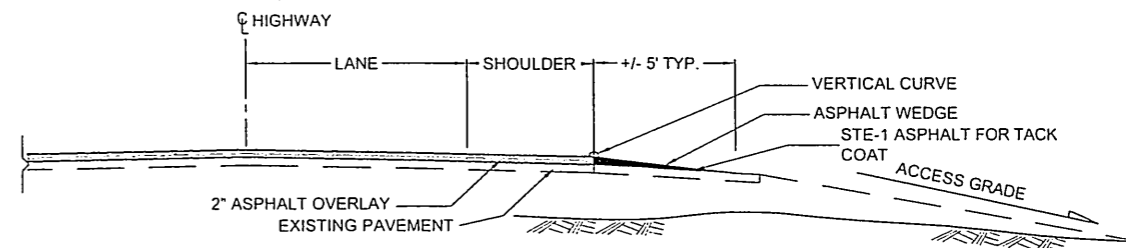
**PAVEMENT TRANSITION DETAIL**

BOP, EOP, HAMILTON DR., WILMA AVE, FRITZ COVE ROAD AND AUKE LAKE WAY

1. THE BOP IS LOCATED AT THE TRANSVERSE PAVEMENT JOINT AT APPROXIMATELY STA. 49+00, SOUTH OF HAMILTON.
2. THE EOP IS LOCATED NORTH OF THE FRITZ COVE ROAD INTERSECTION AT APPROXIMATELY STA. 90+50.
3. THE ENGINEER WILL LOCATE THE EXACT PAVEMENT TRANSITION LOCATIONS IN THE FIELD.



**PLAN VIEW DRIVEWAY DETAILS**



**TYPICAL DRIVEWAY PROFILE**

DRIVEWAY VERTICAL CURVE REQUIREMENTS:  
 CREST: 3/4" MAXIMUM HUMP IN 10' CHORD  
 SAG: 2" MAXIMUM DEPRESSION IN 10' CHORD

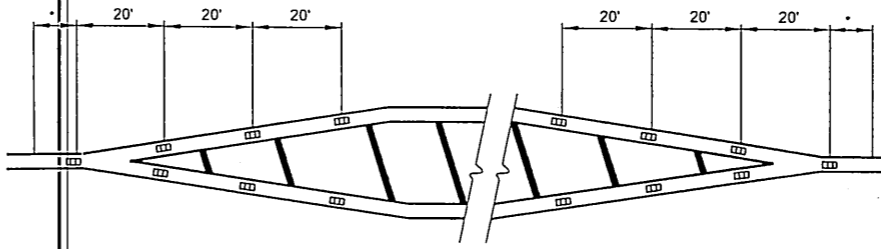
Project As-Built Drawings have been reviewed by the Project Engineer and represent to the best of my knowledge, the project as constructed.  
 PE *[Signature]* Date 6/10/08

DO NOT SCALE FROM THESE DRAWINGS USE DIMENSIONS

CHECKED BY: D. LESTER		STATE OF ALASKA DEPARTMENT OF TRANSPORTATION & PUBLIC FACILITIES SOUTHEAST REGION										
		GLACIER HIGHWAY, HAMILTON DRIVE TO FRITZ COVE ROAD PAVEMENT REHABILITATION										
		<b>DETAILS</b>										
DESIGNED BY: J. WEAVER		PROJECT NUMBER: 69045										
DRAWN BY: B. ELIAS		YEAR: 2007										
PATH: O:\Jnu\69045\Plonset\DETAILS.dwg		SHEET NO.: J2										
TAB: Mon, 06/Aug/07 02:39PM jmweaver		TOTAL SHEETS: 8										
<table border="1"> <thead> <tr> <th colspan="3">REVISIONS</th> </tr> <tr> <th>NO.</th> <th>DATE</th> <th>DESCRIPTION</th> </tr> </thead> <tbody> <tr> <td> </td> <td> </td> <td> </td> </tr> </tbody> </table>		REVISIONS			NO.	DATE	DESCRIPTION					
REVISIONS												
NO.	DATE	DESCRIPTION										

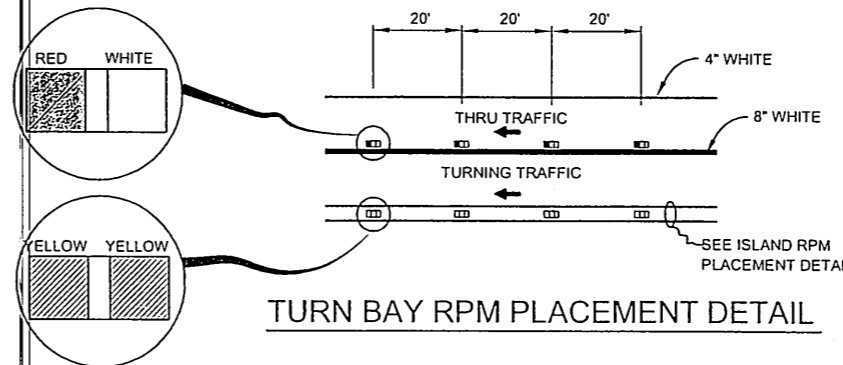
**GENERAL NOTES**

1. FROM 84+36 TO 86+36 THE LANE WIDTH SHALL SMOOTHLY TRANSITION FROM 12' TO 11' AND THE SHOULDER SHALL SMOOTHLY TRANSITION FROM 8' TO 4'.
2. THIS STRIPING PLAN HAS BEEN DEVELOPED FROM AS-BUILTS. THE ENGINEER WILL APPROVE THE FINAL STRIPING PLAN.
3. EXISTING PAVEMENT MARKING SHALL BE REFERENCED IN THE FIELD PRIOR TO BEGINNING WORK.

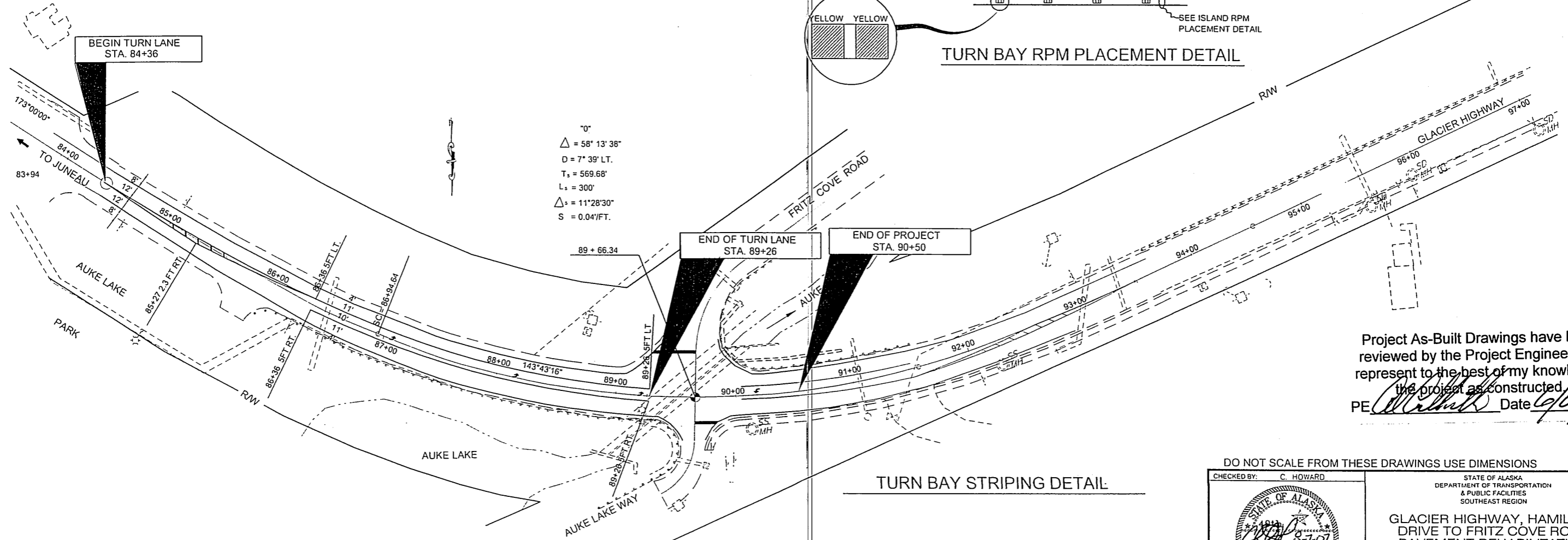


**ISLAND RPM PLACEMENT DETAIL**

CONTINUE 20' SPACING IN ALL DOUBLE YELLOW LINES.



**TURN BAY RPM PLACEMENT DETAIL**



70'  
 $\Delta = 58^\circ 13' 38''$   
 $D = 7^\circ 39' \text{ LT.}$   
 $T_s = 569.68'$   
 $L_s = 300'$   
 $\Delta_s = 11^\circ 28' 30''$   
 $S = 0.04'/\text{FT.}$

BEGIN TURN LANE  
 STA. 84+36

END OF TURN LANE  
 STA. 89+26

END OF PROJECT  
 STA. 90+50

Project As-Built Drawings have been reviewed by the Project Engineer and represent to the best of my knowledge, the project as constructed.  
 PE: *[Signature]* Date 6/10/08

**TURN BAY STRIPING DETAIL**

DO NOT SCALE FROM THESE DRAWINGS USE DIMENSIONS

CHECKED BY: C. HOWARD

STATE OF ALASKA  
 DEPARTMENT OF TRANSPORTATION  
 & PUBLIC FACILITIES  
 SOUTHEAST REGION

GLACIER HIGHWAY, HAMILTON  
 DRIVE TO FRITZ COVE ROAD  
 PAVEMENT REHABILITATION

**STRIPING**

DESIGNED BY: J. WEAVER  
 DRAWN BY: B. ELIAS  
 PATH: O:\Jnu\69045\Planset\STRIPING.dwg  
 TAB: Mon, 06/Aug/07 02:26PM jmweaver

REVISIONS			PROJECT NUMBER	YEAR	SHEET NO.	TOTAL SHEETS
NO.	DATE	DESCRIPTION				
			69045	2007	P1	8

