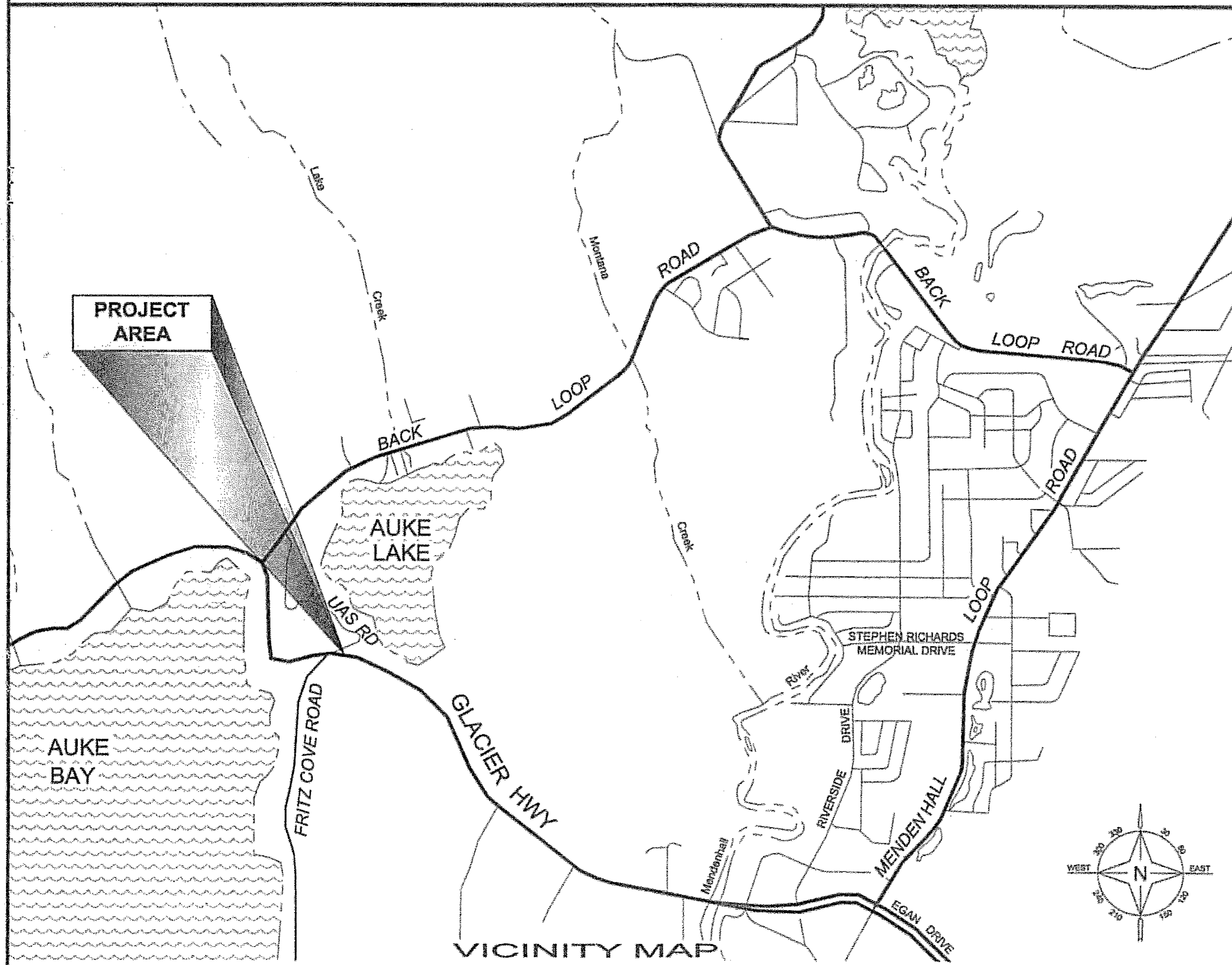
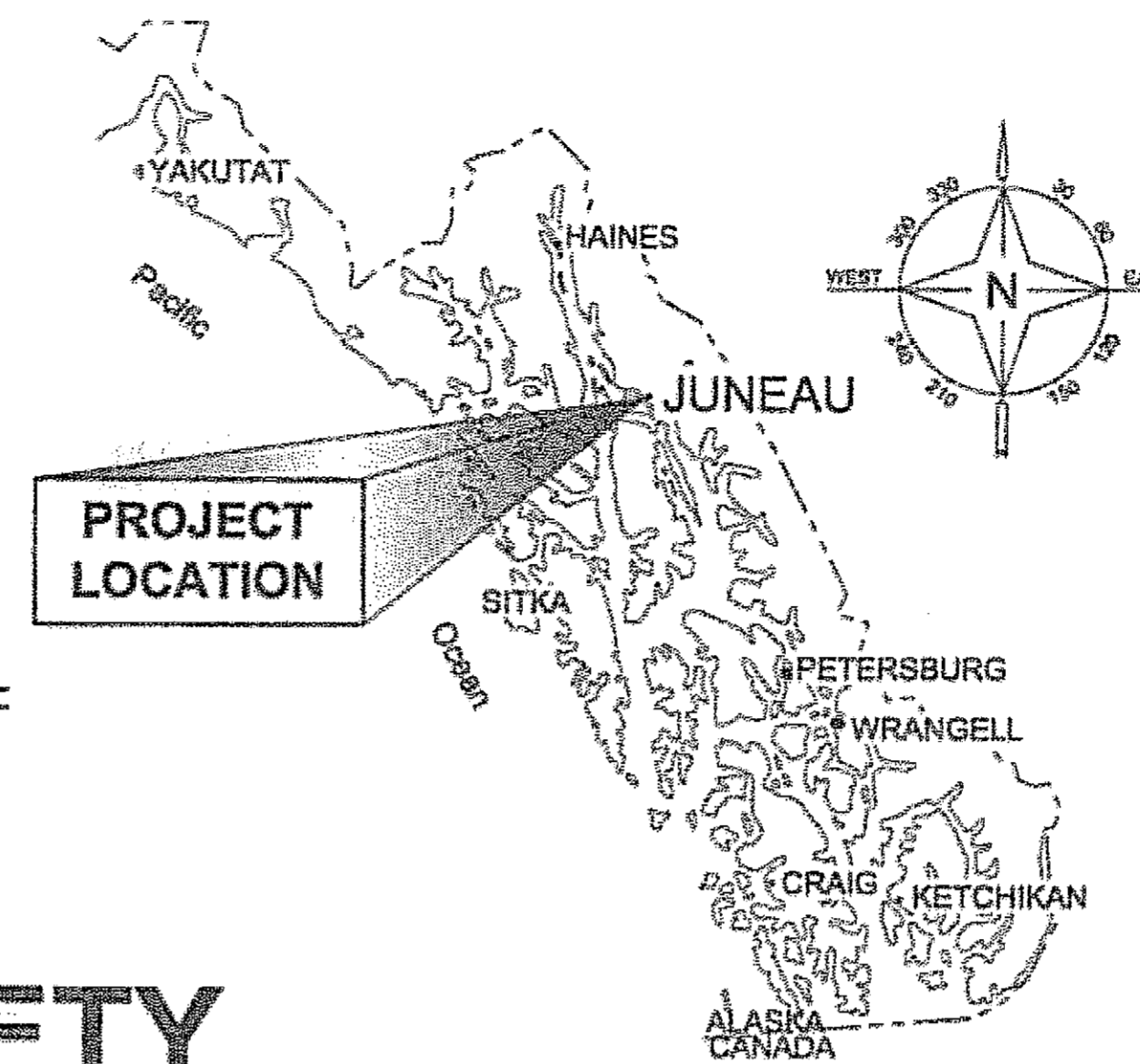


# STATE OF ALASKA

Department of Transportation  
and Public Facilities  
Design and Engineering Services Division-Southeast Region

## JUNEAU, ALASKA

### JNU-FRITZ COVE INTERSECTION SAFETY IMPROVEMENTS ~ PROJECT HHE-000S(550)/68946



*As-built Plans*

Contractor: Southeast Earthmovers, Inc.  
Project Engineer: John Kajdan  
Begin Work: 12/12/2006  
End Work: 5/22/2007

#### DESIGN DESIGNATION

	GLACIER HWY
A.D.T. 2007	= 11530
A.D.T. 2027	= 17140
D.H.V. 2027	= 2520
% T	= 7.5%
V	= 40 mph
E.A.L.	= 2,350,000

#### PROJECT SUMMARY

LENGTH OF GRADING	=	255.00'
LENGTH OF PROJECT	=	0.10 miles

#### INDEX

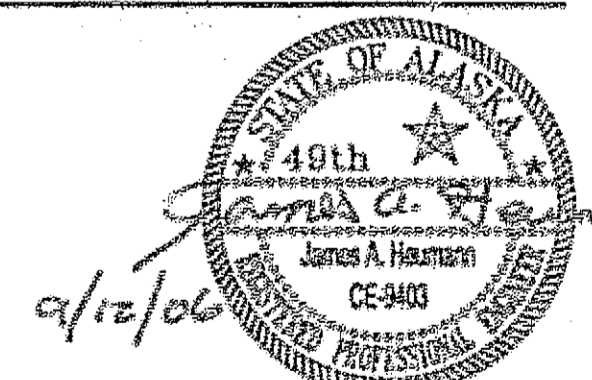
SHEET NO.	DESCRIPTION
A1	TITLE SHEET
B1	TYPICAL SECTION
C1	ESTIMATE OF QUANTITIES
E1-E2	MISCELLANEOUS DETAILS
F1	SITE PLAN & SURVEY CONTROL
G1-G3	TRAFFIC CONTROL PLANS
H1	EROSION & SEDIMENT CONTROL PLAN

#### THE FOLLOWING STANDARD DRAWINGS APPLY TO THIS PROJECT:

- A-1
- C-03.10
- C-04.12
- D-25.00
- D-26.02
- S-05.01
- S-30.03

PATH: Q:\Jnu\68946\DR\68946\_A1\_Title Sheet.dwg  
Tue, 12/Sep/06 01:16PM wnhickok

STATE OF ALASKA  
DEPARTMENT OF TRANSPORTATION  
& PUBLIC FACILITIES  
DESIGN & ENGINEERING SERVICES DIVISION-S.E. REGION



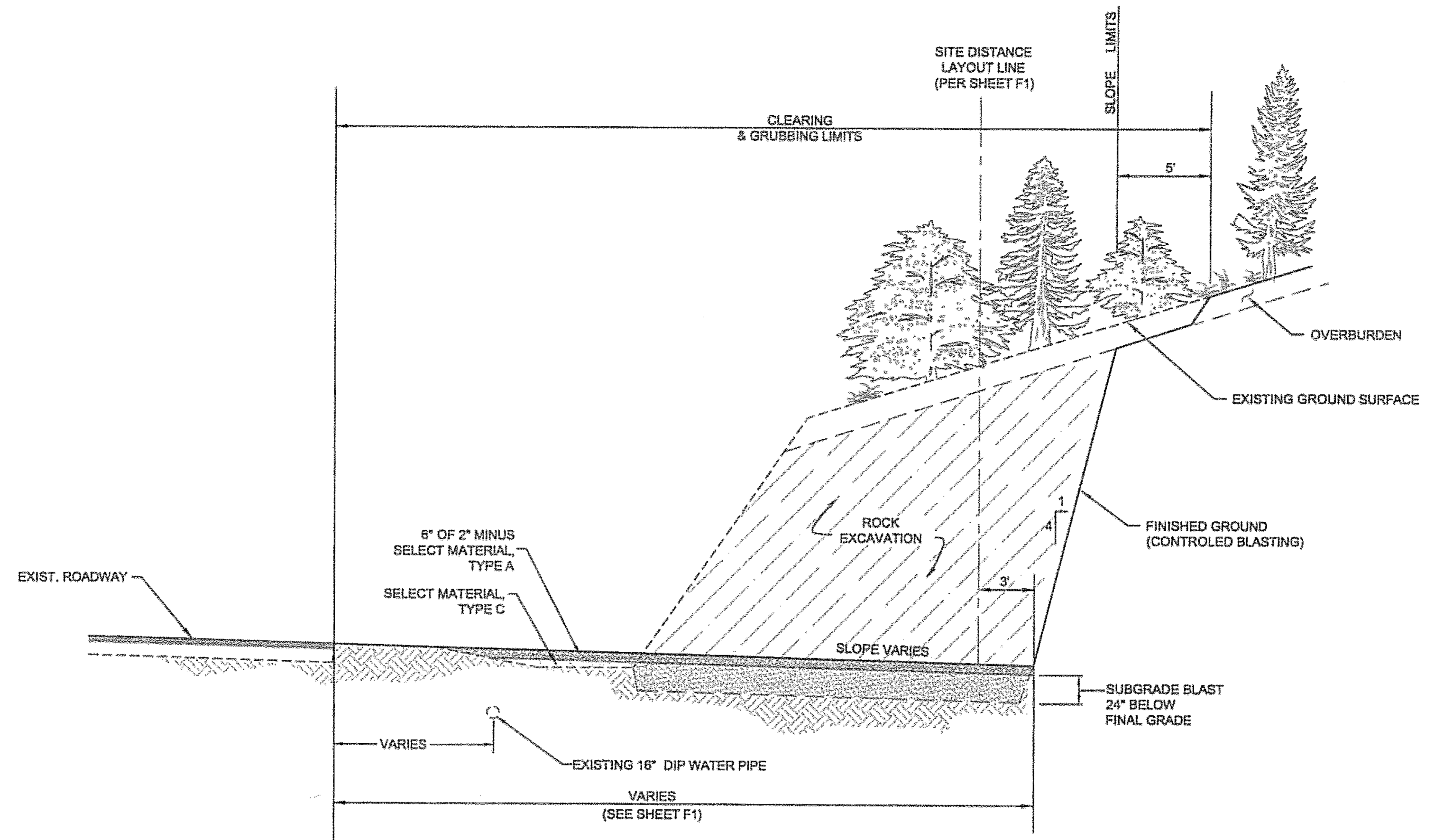
APPROVED: *Jack D. Beedle* 9/13/06  
JACK D. BEEDLE, P.E.  
REGIONAL PRECONSTRUCTION ENGINEER DATE

APPROVED: *Malcolm A. Menzies* 9/13/06  
MALCOLM A. MENZIES, P.E.  
DIRECTOR, S.E. REGION DATE

CERTIFIED TRUE & CORRECT AS-BUILT OF ACTUAL FIELD CONDITION:

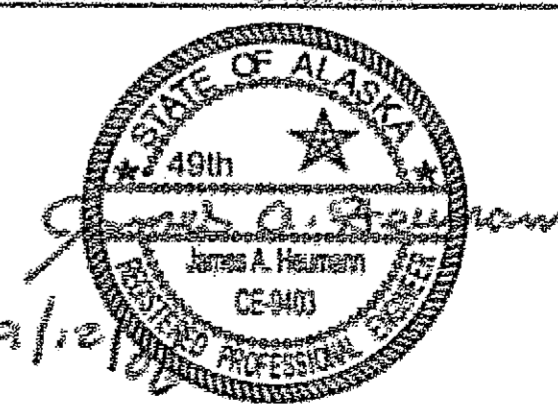
CONSTRUCTION PROJECT MANAGER DATE

STATE	PROJECT DESIGNATION	YEAR	SHEET NO.	TOTAL SHEETS
ALASKA	HHE-000S(550)/68946	2006	A1	10



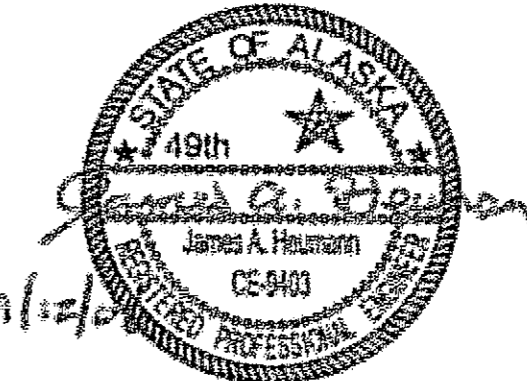
**A** **TYPICAL SECTION**  
**B1** NOT TO SCALE

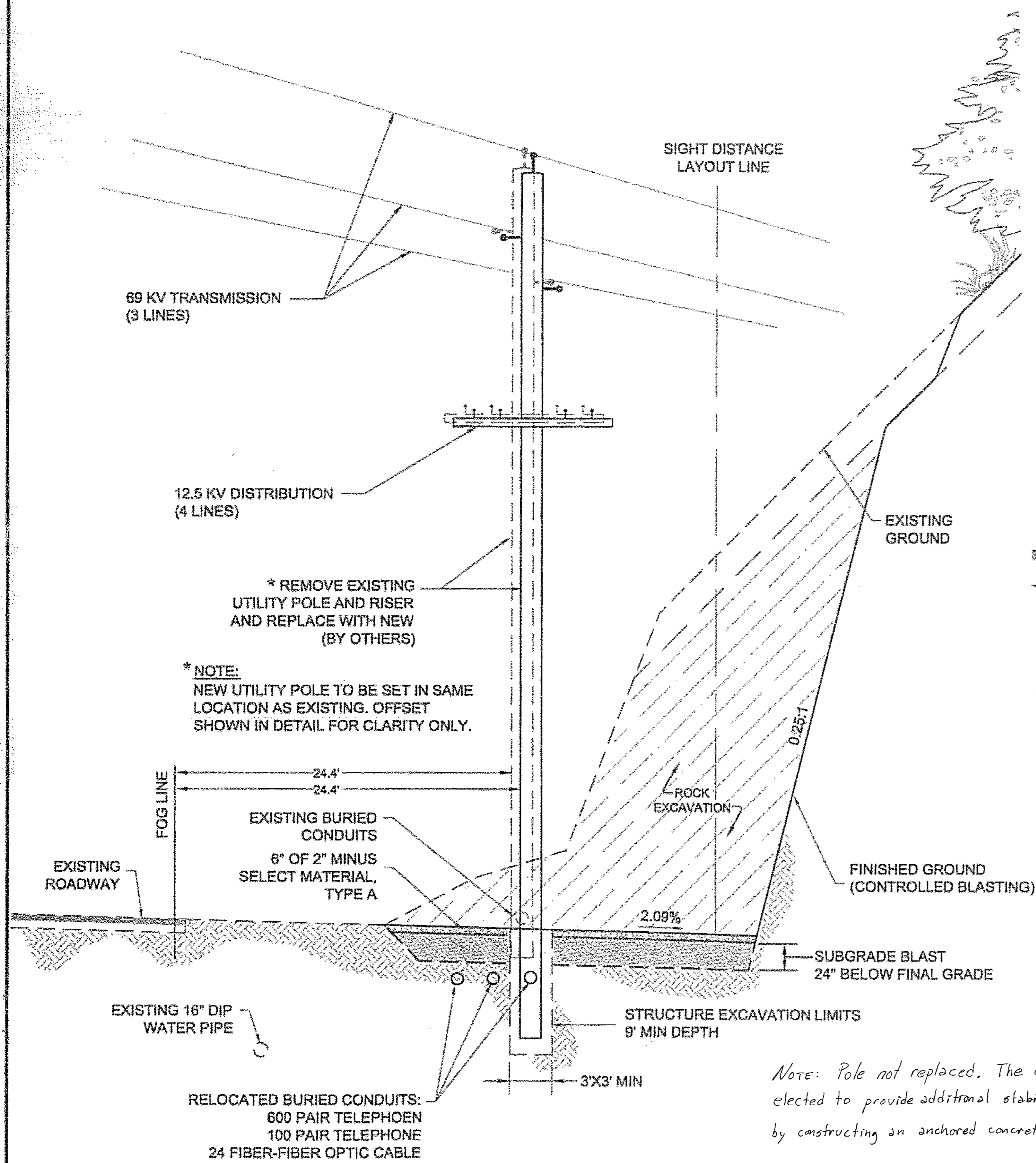
DO NOT SCALE FROM THESE DRAWINGS USE DIMENSIONS

CHECKED BY: J. HEUMANN 		STATE OF ALASKA DEPARTMENT OF TRANSPORTATION & PUBLIC FACILITIES DESIGN & ENGINEERING SERVICES DIVISION-SOUTHEAST REGION			
DESIGNED BY: M. LAVERING DRAWN BY: WMH		<b>JNU- FRITZ COVE          INTERSECTION SAFETY          IMPROVEMENTS          HHE-00S(550)-68946</b>			
PATH: Q:\JNU\68946\DR\68946_B_TYPICAL SECTION.DWG TAB: 81 Tuesday, September 12, 2006 1:14 PM WMHICKOK		<b>TYPICAL          SECTION</b>			
REVISIONS NO. DATE DESCRIPTION		PROJECT DESIGNATION HHE-00S(550)/68946	YEAR 2006	SHEET NO. B1	TOTAL SHEETS 10

ESTIMATE OF QUANTITIES			
ITEM NO	PAY ITEM	PAY UNIT	QUANTITY
201 (3B)	CLEARING AND GRUBBING	LUMP SUM	ALL REQUIRED
203 (2)	ROCK EXCAVATION	CUBIC YARD	1500 1107.05
203 (10)	CONTROLLED BLASTING	LINEAR FOOT	1720 112
203(19)	PRE-BLAST SURVEY	LUMP SUM	ALL REQUIRED
203(20)	DRAIN HOLES	CONTINGENT SUM	ALL REQUIRED 0
204 (1)	STRUCTURE EXCAVATION	CUBIC YARD	45 0.77
603 (1-24)	24" CSP	LINEAR FOOT	15 0.9
604 (5)	INLET, TYPE A	EACH	1
615 (1)	STANDARD SIGN	SQUARE FOOT	10
640 (1)	MOBILIZATION AND DEMOBILIZATION	LUMP SUM	ALL REQUIRED
641 (1)	EROSION AND POLLUTION CONTROL ADMINISTRATION	LUMP SUM	ALL REQUIRED
641 (3)	TEMPORARY EROSION AND POLLUTION CONTROL	LUMP SUM	ALL REQUIRED
641 (4)	TEMPORARY EROSION CONTROL AND POLLUTION CONTROL AMENDMENTS	CONTINGENT SUM	ALL REQUIRED 0
642 (1)	CONSTRUCTION SURVEYING	LUMP SUM	ALL REQUIRED
643 (2)	TRAFFIC MAINTENANCE	LUMP SUM	ALL REQUIRED
643 (23)	TRAFFIC PRICE ADJUSTMENT	CONTINGENT SUM	ALL REQUIRED 0
690 (1)	SOIL SLOPE STABILIZATION, CO 1	LUMP SUM	ALL REQUIRED

DO NOT SCALE FROM THESE DRAWINGS USE DIMENSIONS

		STATE OF ALASKA DEPARTMENT OF TRANSPORTATION & PUBLIC FACILITIES DESIGN & ENGINEERING SERVICES DIVISION-SOUTHEAST REGION	
DESIGNED BY: M. LAVERING DRAWN BY: DRD		<b>JNU- FRITZ COVE          INTERSECTION SAFETY          IMPROVEMENTS          HHE-00S(550)-68946</b>	
PATH: Q:\JNU\88946\DR\88946_C_ESTIMATE OF QTY.DWG TAB: C1 Tuesday, September 12, 2006 1:14 PM WMHICKOK		<b>ESTIMATE OF          QUANTITIES</b>	
NO.	DATE	REVISIONS DESCRIPTION	PROJECT DESIGNATION HHE-000S(550)/68946
			YEAR 2006
			SHEET NO. C1
			TOTAL SHEETS 10

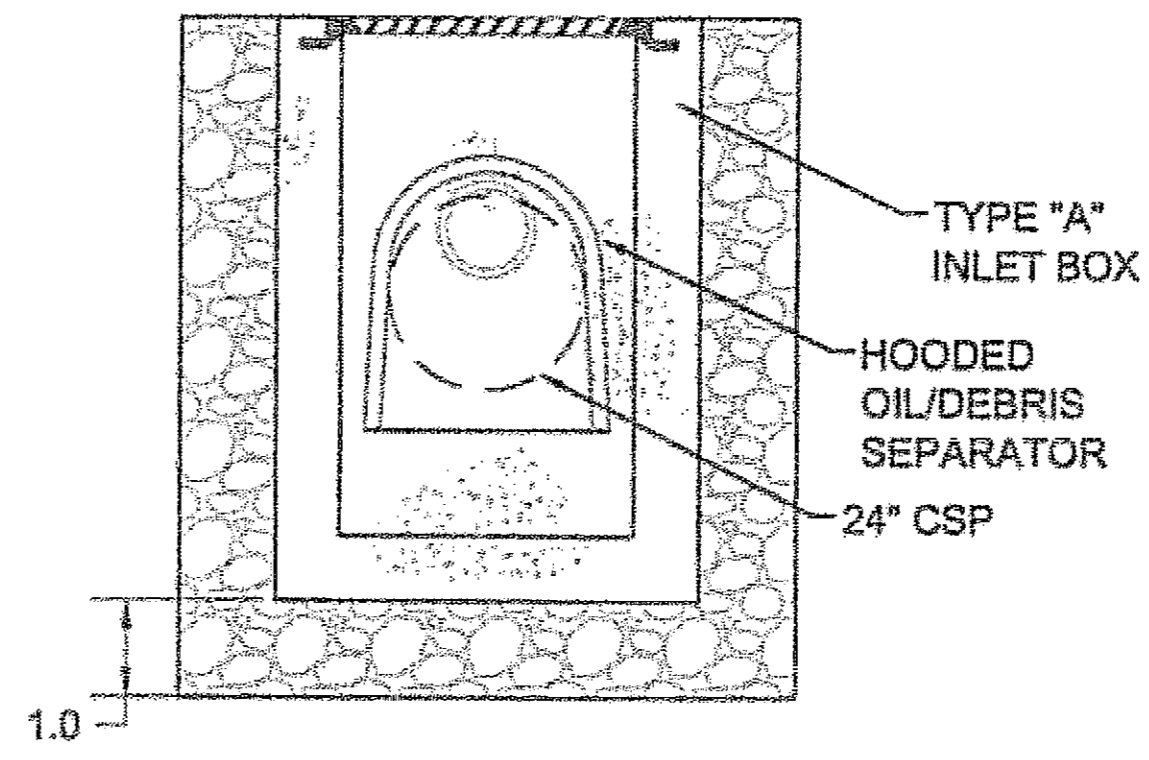


**DETAIL A  
UTILITY POLE RELOCATION  
STA 12+04  
NOT TO SCALE**

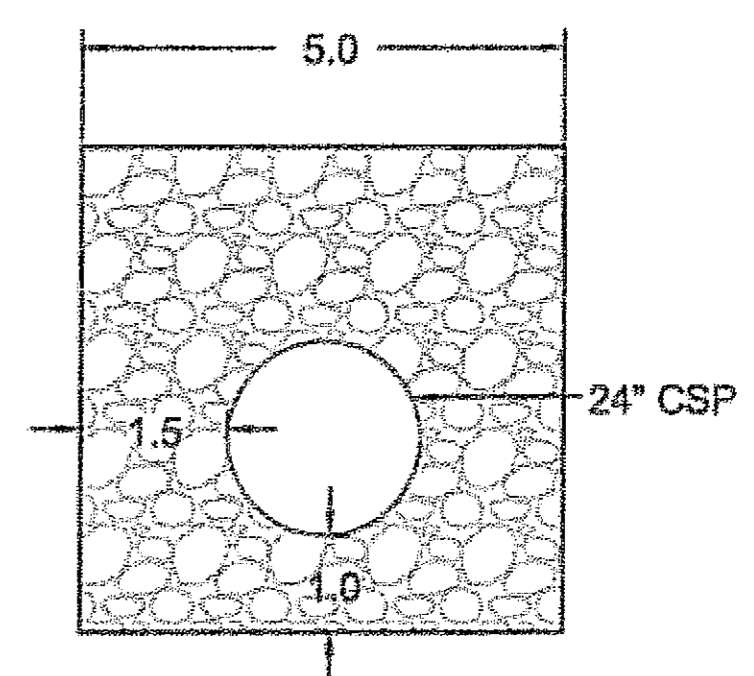
RELOCATED BURIED CONDUITS:  
600 PAIR TELEPHOEN  
100 PAIR TELEPHONE  
24 FIBER-FIBER OPTIC CABLE

*Note: Pole not replaced. The owner elected to provide additional stability by constructing an anchored concrete collar.*

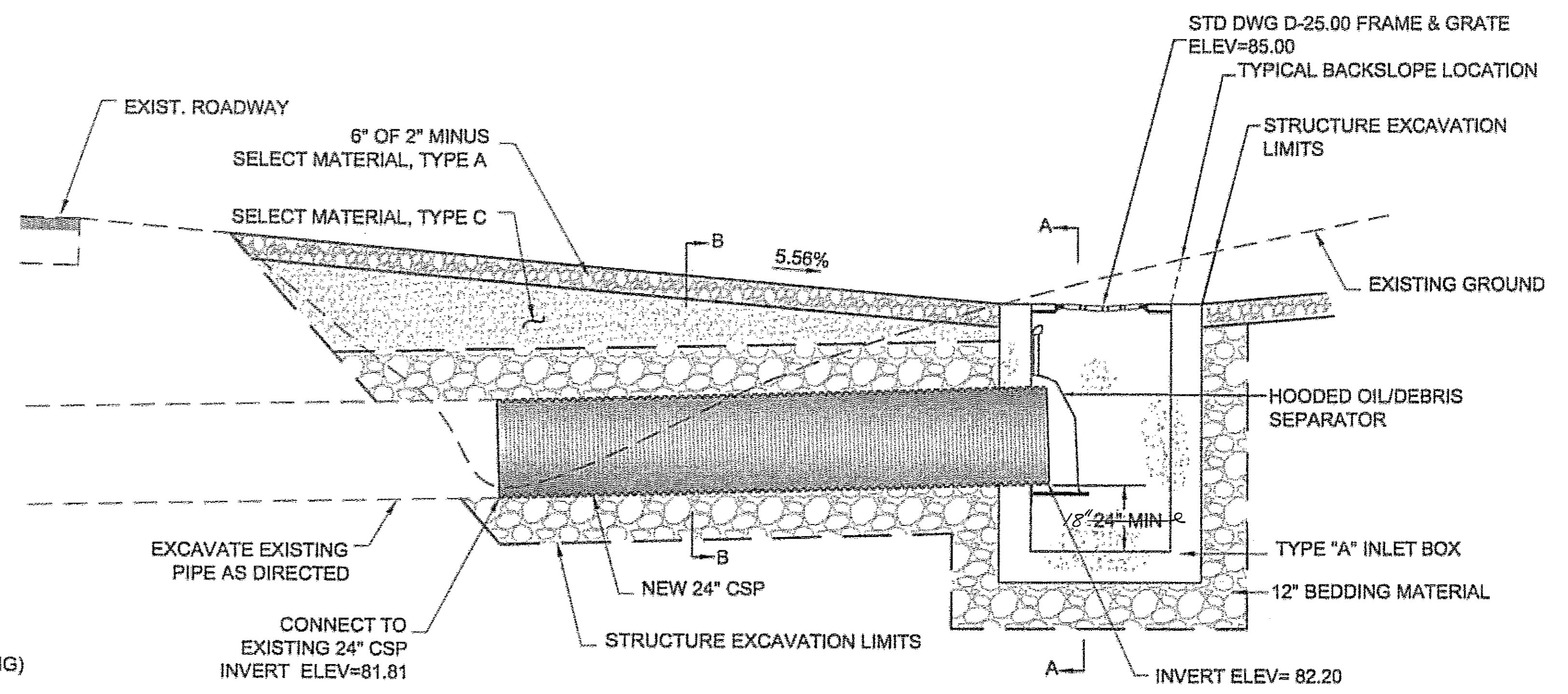
JSK 6/22/2007



**SECTION A-A  
MANHOLE STRUCTURE**



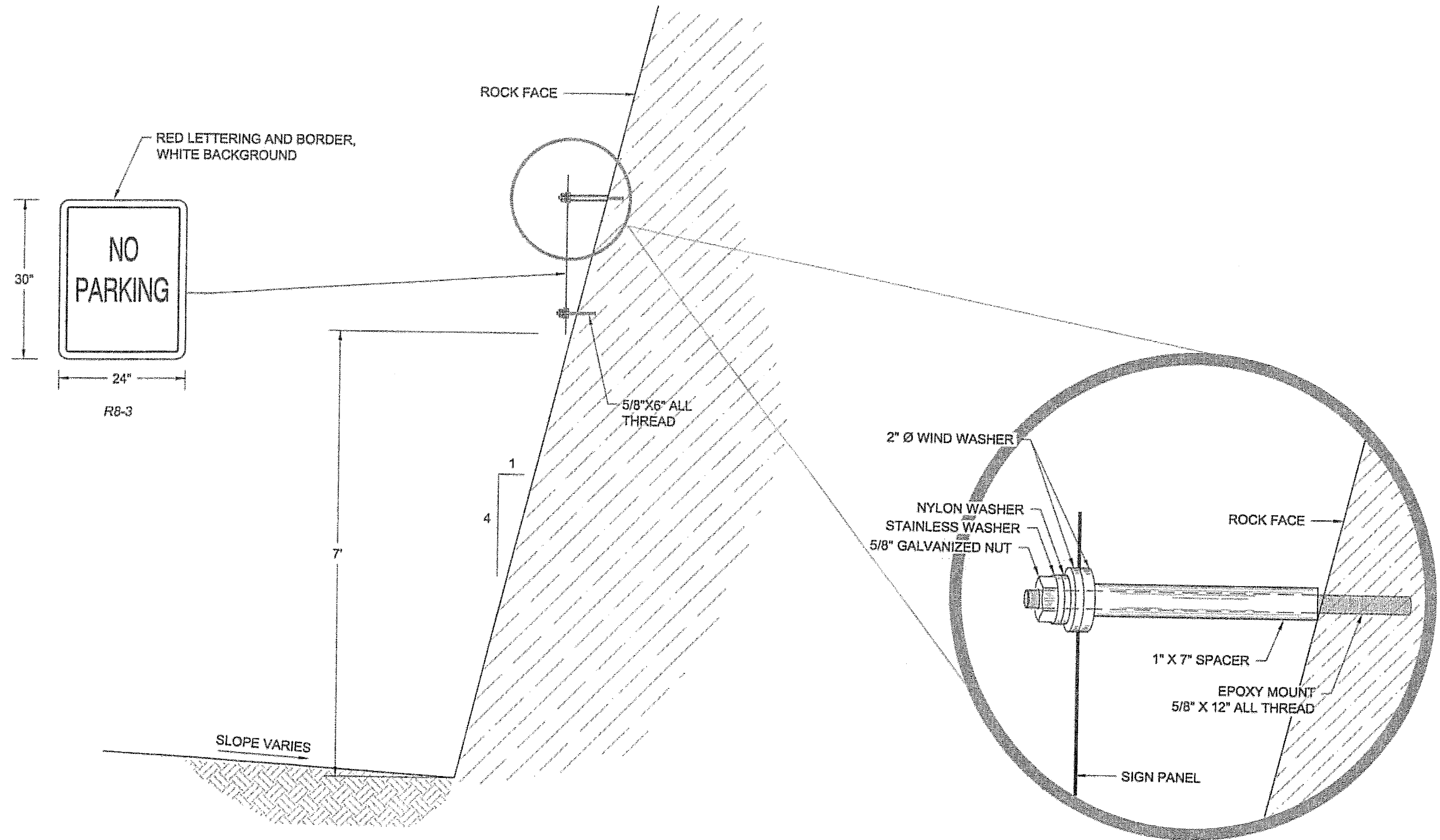
**SECTION B-B  
PIPE BEDDING**



**DETAIL B  
CMP & INLET STRUCTURE  
STA 13+34  
NOT TO SCALE**

DO NOT SCALE FROM THESE DRAWINGS USE DIMENSIONS

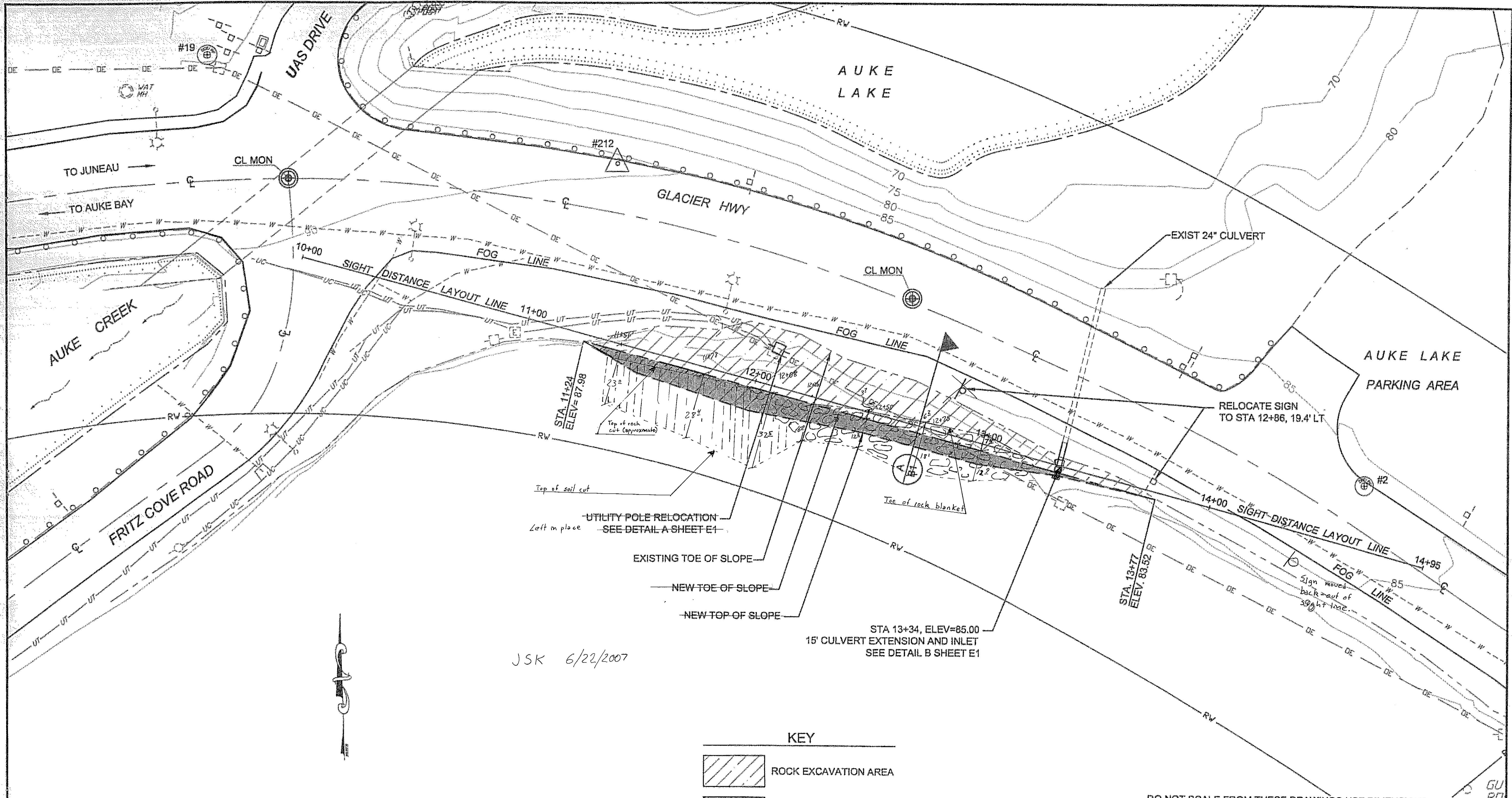
CHECKED BY: J. HEUMANN	STATE OF ALASKA DEPARTMENT OF TRANSPORTATION & PUBLIC FACILITIES DESIGN & ENGINEERING SERVICES DIVISION-SOUTHEAST REGION
DESIGNED BY: M. LAVERING	<b>JNU- FRITZ COVE INTERSECTION SAFETY IMPROVEMENTS HHE-00S(550)-68946</b>
DRAWN BY: WMH	<b>MISCELLANEOUS DETAILS</b>
PATH: Q:\JNU\89946\DR\89946_E_MISC DETAIL.DWG	PROJECT DESIGNATION: HHE-00S(550)/68946
TAB: E1 Tuesday, September 12, 2006 1:14 PM	YEAR: 2006
REVISIONS	SHEET NO. E1
NO. DATE DESCRIPTION	TOTAL SHEETS 10



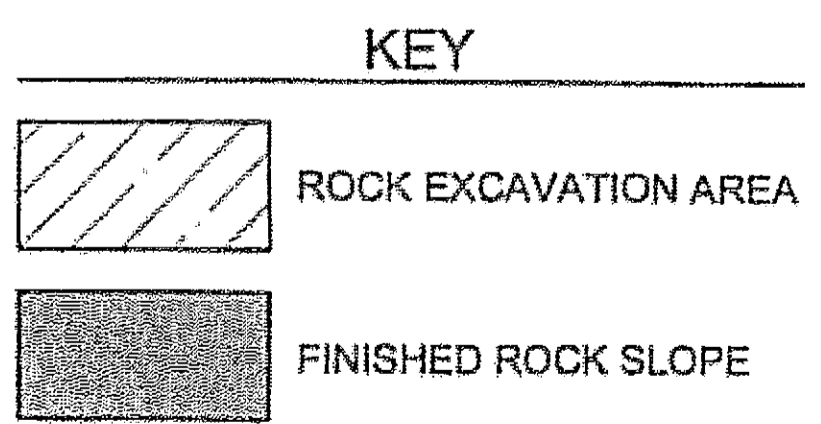
**NO PARKING SIGNS  
STATIONS 11+50 AND 13+00**

DO NOT SCALE FROM THESE DRAWINGS USE DIMENSIONS

CHECKED BY: J. HEUMANN 		STATE OF ALASKA DEPARTMENT OF TRANSPORTATION & PUBLIC FACILITIES DESIGN & ENGINEERING SERVICES DIVISION-SOUTHEAST REGION									
DESIGNED BY: M. LAVERING DRAWN BY: WMH		<b>JNU- FRITZ COVE INTERSECTION SAFETY IMPROVEMENTS HHE-00S(550)-68946</b>									
PATH: Q:\JNU\68946\DR\88946_E_MISC DETAIL.DWG TAB: E2 Tuesday, September 12, 2006 1:14 PM WMHICKOK		<b>MISCELLANEOUS DETAILS</b>									
REVISIONS <table border="1"> <thead> <tr> <th>NO.</th> <th>DATE</th> <th>DESCRIPTION</th> </tr> </thead> <tbody> <tr> <td> </td> <td> </td> <td> </td> </tr> </tbody> </table>		NO.	DATE	DESCRIPTION				PROJECT DESIGNATION HHE-00S(550)/68946	YEAR 2006	SHEET NO. E2	TOTAL SHEETS 10
NO.	DATE	DESCRIPTION									



JSK 6/22/2007



**LEGEND & SYMBOLS**

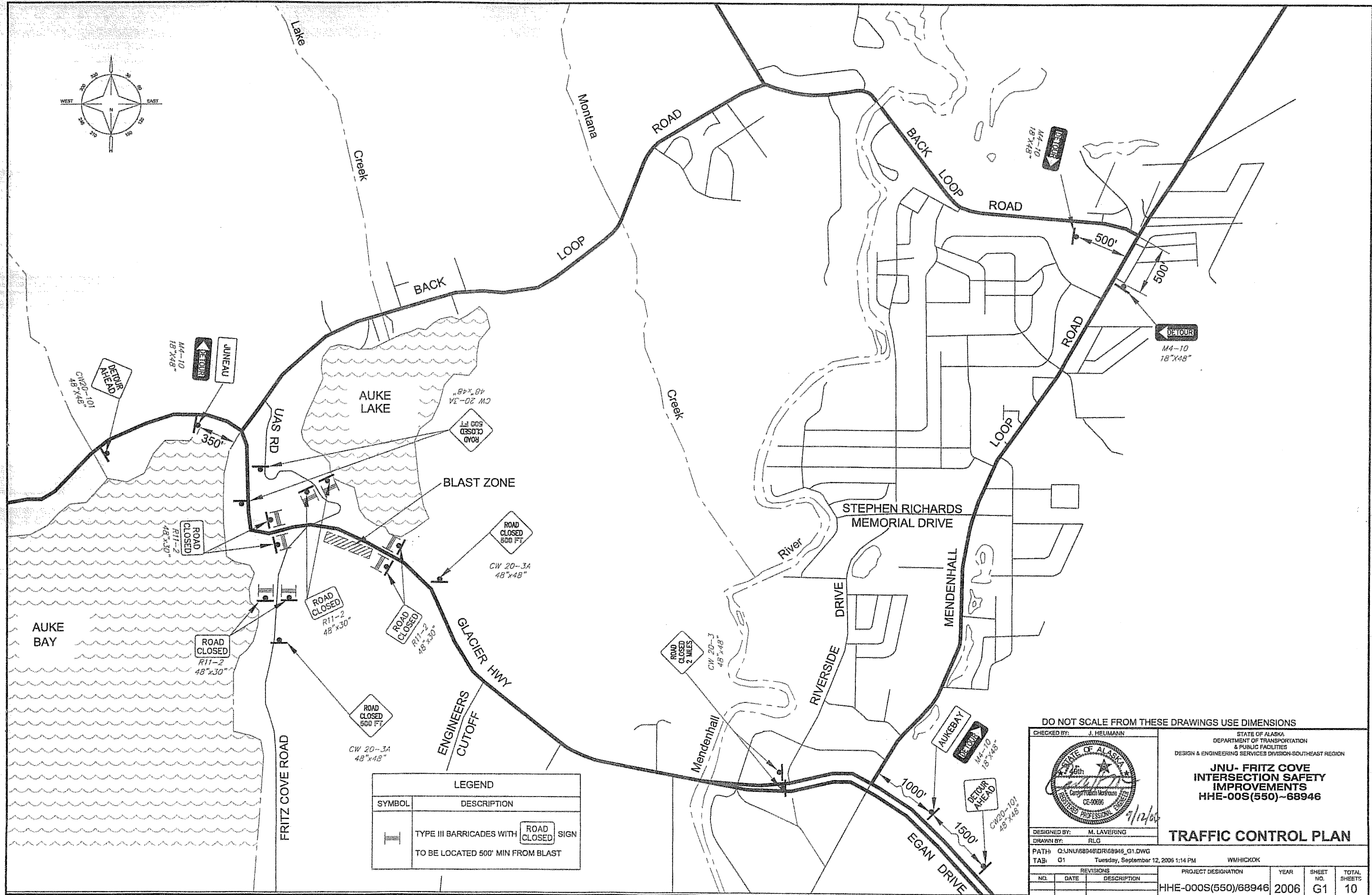
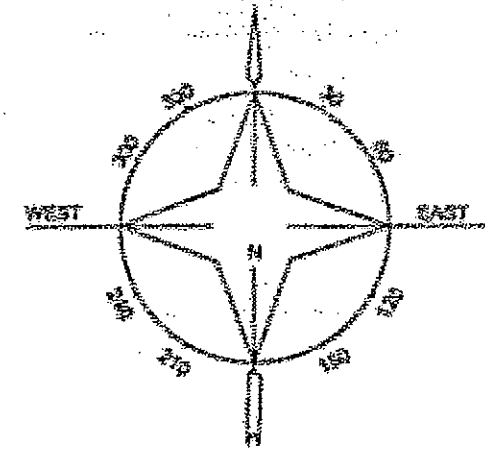
UNDERGROUND TELECOMMUNICATION (PHONE & FIBEROPTIC)	— UT — UT —
OVERHEAD ELECTRIC	— OE — OE —
UNDERGROUND WATER	- - - W - - - W - - -
UNDERGROUND CABLE	— UC — UC —

**SURVEY CONTROL TABLE**

	NORTHING	EASTING	ELEV	SUMMARY
2	509441.216	487413.072	85.77	ALUMINUM CAP ON REBAR STAMPED FCF-2
19	509621.617	489621.104	96.54	ALUMINUM CAP ON REBAR STAMPED FCF-19
212	509575.586	487095.281	90.28	PK NAIL IN SHOULDER PAVEMENT
STA. 10+00	509536.030	486961.085		BEGIN SIGHT DISTANCE LAYOUT LINE
STA. 14+95	509406.666	487438.882		END SIGHT DISTANCE LAYOUT LINE

DO NOT SCALE FROM THESE DRAWINGS USE DIMENSIONS

		<p>CHECKED BY: J. HELMANN</p> <p>DESIGNED BY: M. LAYERING</p> <p>DRAWN BY: WMH</p> <p>PATH: Q:\JNU\68946\DR\68946_F_PLAN SHEET.DWG</p> <p>TAB: F1 Tuesday, September 12, 2006 1:14 PM WMHICKOK</p>						
<p>STATE OF ALASKA DEPARTMENT OF TRANSPORTATION &amp; PUBLIC FACILITIES DESIGN &amp; ENGINEERING SERVICES DIVISION-SOUTHEAST REGION</p> <p><b>JNU- FRITZ COVE INTERSECTION SAFETY IMPROVEMENTS</b> HHE-00S(550)-68946</p> <p style="text-align: center;"><b>SITE PLAN &amp; SURVEY CONTROL</b></p>		<table border="1" style="width: 100%; border-collapse: collapse;"> <tr> <th>NO.</th> <th>DATE</th> <th>DESCRIPTION</th> </tr> <tr> <td> </td> <td> </td> <td> </td> </tr> </table>	NO.	DATE	DESCRIPTION			
NO.	DATE	DESCRIPTION						
<p>PROJECT DESIGNATION: HHE-00S(550)/68946</p>		<table border="1" style="width: 100%; border-collapse: collapse;"> <tr> <th>YEAR</th> <th>SHEET NO.</th> <th>TOTAL SHEETS</th> </tr> <tr> <td>2006</td> <td>F1</td> <td>10</td> </tr> </table>	YEAR	SHEET NO.	TOTAL SHEETS	2006	F1	10
YEAR	SHEET NO.	TOTAL SHEETS						
2006	F1	10						



LEGEND	
SYMBOL	DESCRIPTION
	TYPE III BARRICADES WITH  SIGN
	TO BE LOCATED 500' MIN FROM BLAST

DO NOT SCALE FROM THESE DRAWINGS USE DIMENSIONS

CHECKED BY: J. HEUMANN

STATE OF ALASKA  
DEPARTMENT OF TRANSPORTATION  
& PUBLIC FACILITIES  
DESIGN & ENGINEERING SERVICES DIVISION-SOUTHEAST REGION

**JNU- FRITZ COVE  
INTERSECTION SAFETY  
IMPROVEMENTS  
HHE-00S(550)-68946**

DESIGNED BY: M. LAVERING  
DRAWN BY: RLG

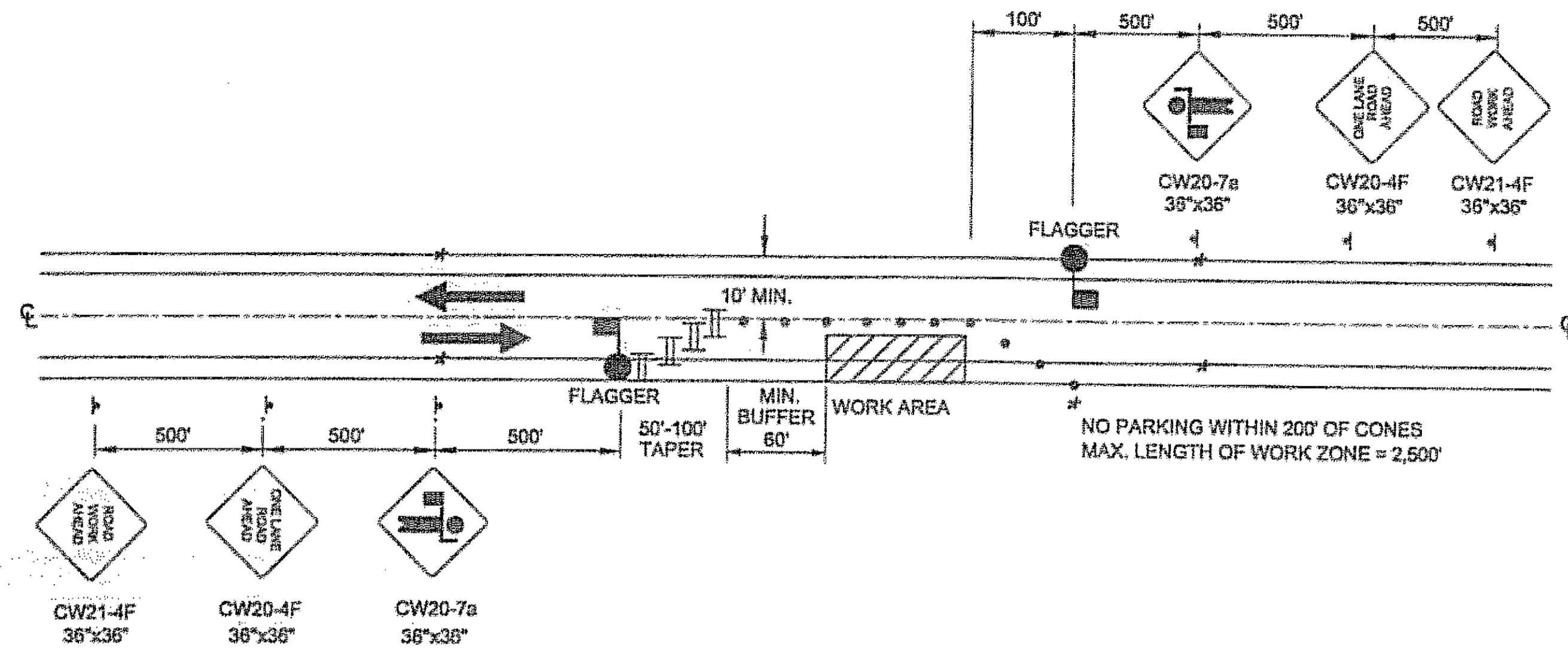
**TRAFFIC CONTROL PLAN**

PATH: Q:\JNU\68946\DR\68946\_G1.DWG  
TAB: G1

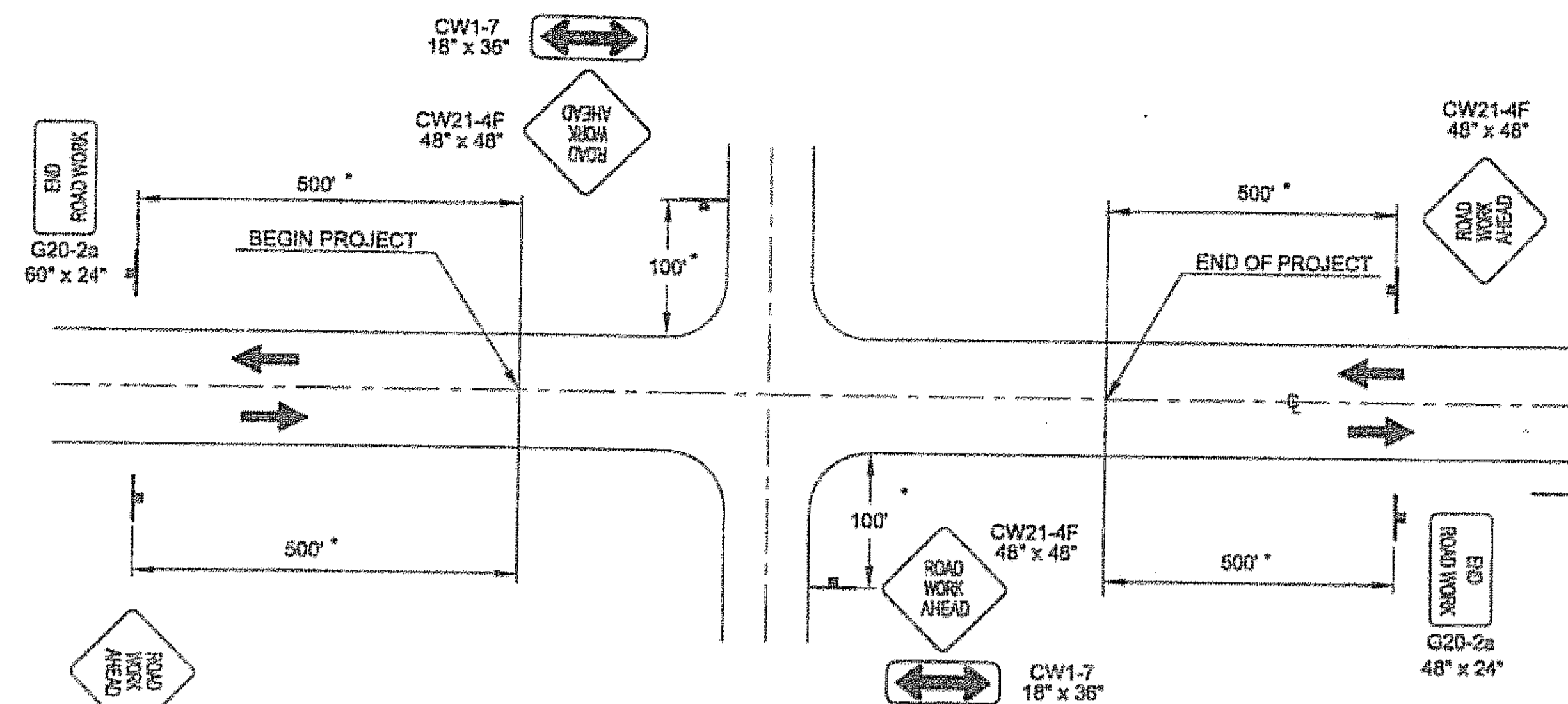
Tuesday, September 12, 2006 1:14 PM

WMLHCKOK

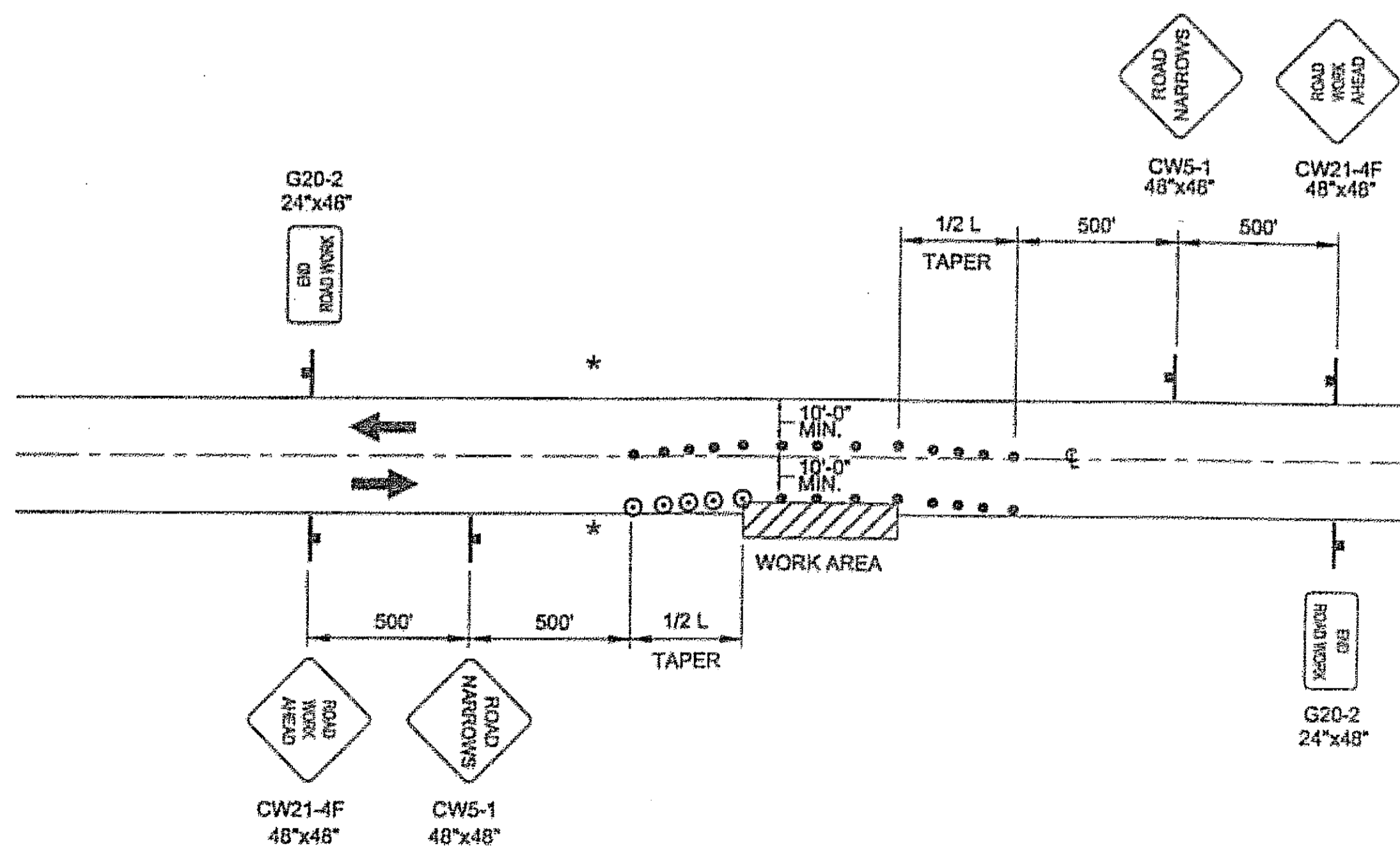
REVISIONS			PROJECT DESIGNATION	YEAR	SHEET NO.	TOTAL SHEETS
NO.	DATE	DESCRIPTION	HHE-00S(550)/68946	2006	G1	10



TWO LANE ROAD - SINGLE LANE CLOSURE  
DOUBLE FLAGGER



PERMANENT CONSTRUCTION SIGNING



ROADWAY ENCROACHMENT

NOTE: IF ONLY ONE LANE IS AFFECTED BY ROAD WORK (THAT IS, THE CONES ALONG THE WORK AREA ARE NO CLOSER THAN 10' TO CENTERLINE) THE CENTERLINE CONES FOR THE OPPOSING LANE SHALL BE DELETED.

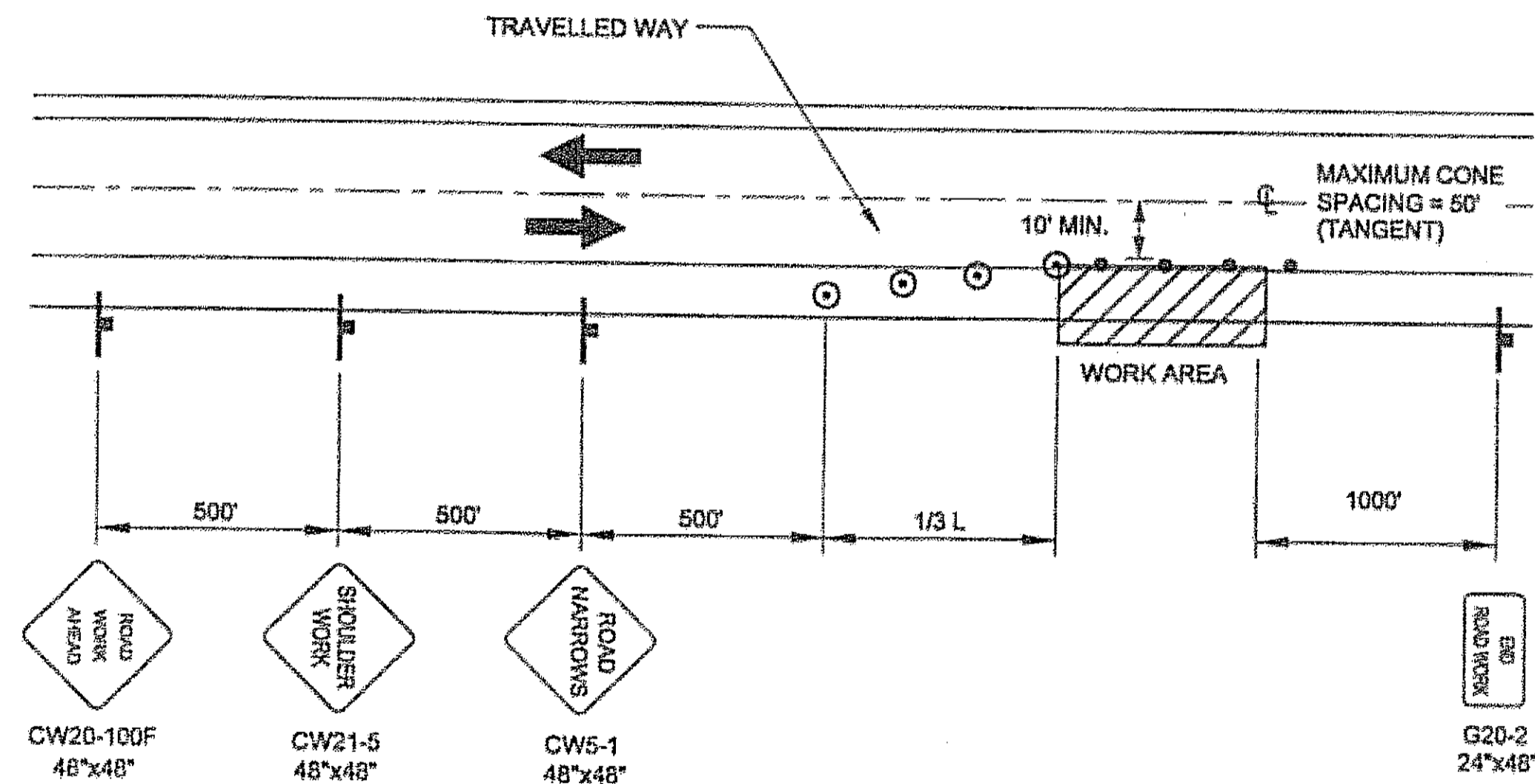
**LEGEND**

- SIGN
- CONE
- DRUM
- III TYPE III BARRICADE

$L = WS$  (45 MPH OR >)  
 $L = \frac{WS}{60}$  (40 MPH OR <)

WHERE:  
 L = LENGTH OF TAPER (FT)  
 W = WIDTH OF OFFSET (FT)  
 S = SPEED (MPH)

SPEED (MILES PER HOUR)	BUFFER/LENGTH (ft)	CONE/DRUM SPACING ON TAPER (ft)
25	155	25
30	200	30
35	250	35
40	305	40
45	360	45
50	425	50
55	495	55
60	570	60



SHOULDER WORK

DO NOT SCALE FROM THESE DRAWINGS USE DIMENSIONS

CHECKED BY: C. MOREHOUSE 		STATE OF ALASKA DEPARTMENT OF TRANSPORTATION & PUBLIC FACILITIES DESIGN & ENGINEERING SERVICES DIVISION-SOUTHEAST REGION <b>JNU- FRITZ COVE INTERSECTION SAFETY IMPROVEMENTS</b> <b>HHE-00S(550)-68946</b>		
DESIGNED BY: D. FAGNANT DRAWN BY: D. FAGNANT		<b>TRAFFIC CONTROL PLAN</b>		
PATH: Q:\JNU\88946\DR\FRITZ TCP.DWG TAB: G2 Tuesday, September 12, 2006 1:14 PM WMHICKOK		PROJECT DESIGNATION HHE-000S(550)/68946	YEAR 2006	
NO.	DATE	DESCRIPTION	SHEET NO. G2	TOTAL SHEETS 10

## TRAFFIC CONTROL NOTES

1. IT IS THE INTENT OF THIS TRAFFIC CONTROL PLAN (TCP) TO ILLUSTRATE SOME BUT NOT ALL OF THE TRAFFIC CONTROL CONFIGURATIONS THAT WILL BE REQUIRED BY THIS PROJECT. TRAFFIC CONTROL PLANS FOR CONFIGURATIONS NOT COVERED BY THIS TCP SHALL BE DEVELOPED BY THE CONTRACTOR AND SUBMITTED TO THE ENGINEER FOR APPROVAL PRIOR TO USE.
2. TRAFFIC LANES SHALL BE A MINIMUM OF 10' WIDE.
3. DOUBLE TRAFFIC FINES SIGNS SHALL BE USED AS DIRECTED BY THE ENGINEER AND PER STANDARD DRAWING C-04.12.
4. AS MUCH AS POSSIBLE, THE CONTRACTOR SHALL STAGE HIS WORK FROM THE CLEARED AREA IN THE SOUTHEAST QUADRANT OF THE INTERSECTION AND THE SHOULDER OF THE ROAD. THE SINGLE LANE CLOSURE SHALL ONLY BE USED IF ABSOLUTELY NECESSARY AND ONLY WITH THE WRITTEN AUTHORIZATION OF THE ENGINEER.
5. A ONE LANE CLOSURE DURING THE MORNING AM PEAK (7:00 TO 8:30 AM) SHALL NOT BE ALLOWED. A ONE LANE CLOSURE DURING THE EVENING PM PEAK (3:30 TO 6:00 PM) SHALL NOT BE ALLOWED.
6. BLASTING SIGNS SHALL BE COVERED OR REMOVED WHEN THERE ARE NO EXPLOSIVES IN THE AREA OR THE AREA IS OTHERWISE SECURE.
7. PRIOR TO BLASTING, THE BLASTER IN CHARGE SHALL DETERMINE WHETHER ROAD USERS IN THE BLASTING ZONE WILL BE ENDANGERED BY THE BLASTING OPERATION. IF THERE IS DANGER, ROAD USERS SHALL NOT BE PERMITTED TO PASS THROUGH THE BLASTING ZONE DURING BLASTING OPERATIONS.

### LEGEND

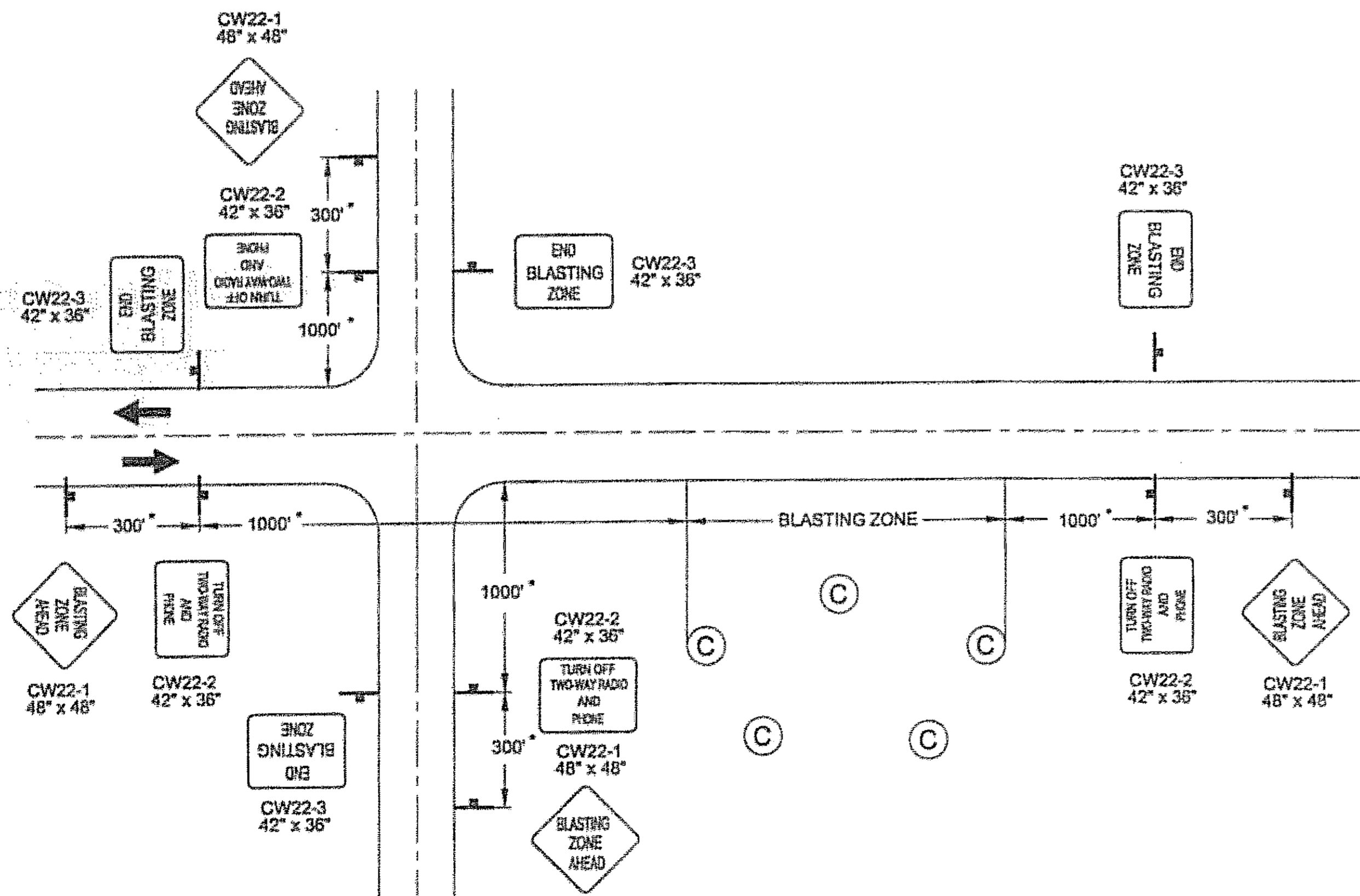
- ..... SIGN
- ..... CONE
- ..... DRUM
- ..... TYPE III BARRICADE

$L = WS (45 \text{ MPH OR } >)$   
 $L = \frac{WS}{60} (40 \text{ MPH OR } <)$

WHERE:  
 L= LENGTH OF TAPER (FT)  
 W= WIDTH OF OFFSET (FT)  
 S= SPEED (MPH)

### TCP TABLE SETUP

SPEED (MILES PER HOUR)	BUFFER/LENGTH (ft)	CONE/DRUM SPACING ON TAPER (ft)
25	155	25
30	200	30
35	250	35
40	305	40
45	360	45
50	425	50
55	495	55
60	570	60

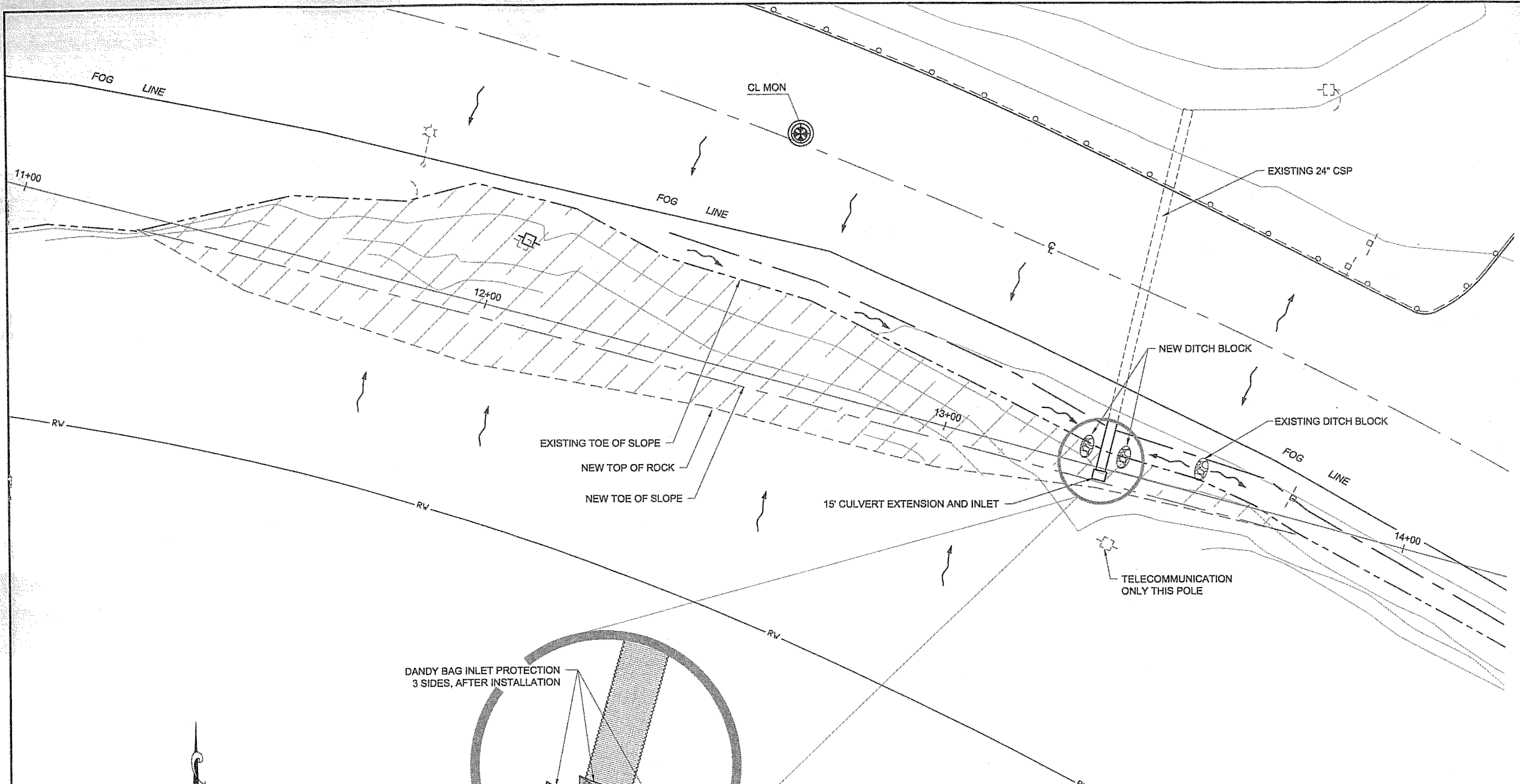


BLASTING ZONE

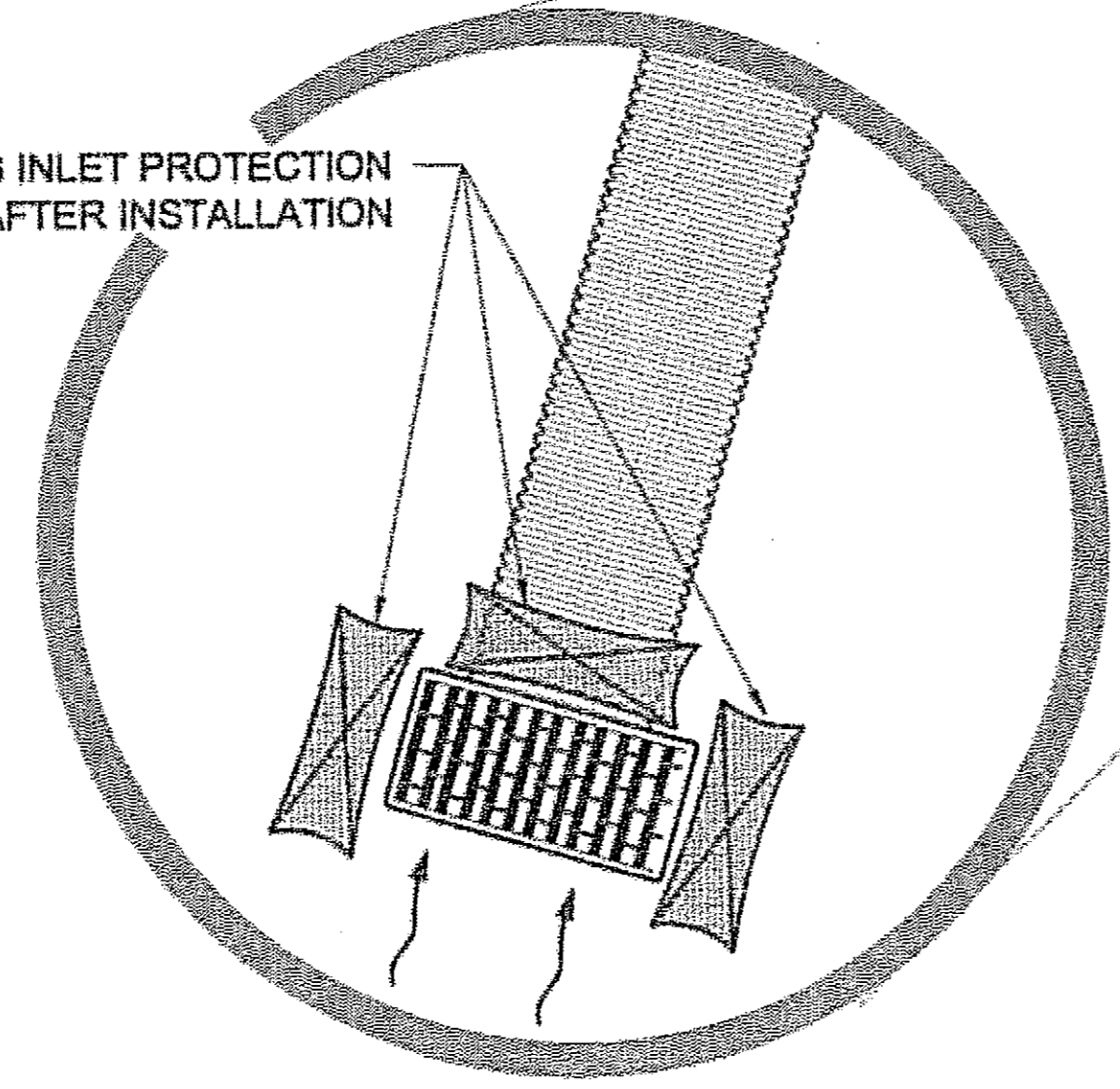
NOTE: (C) = BLASTING CAP

DO NOT SCALE FROM THESE DRAWINGS USE DIMENSIONS

CHECKED BY: C. MOREHOUSE 	STATE OF ALASKA DEPARTMENT OF TRANSPORTATION & PUBLIC FACILITIES DESIGN & ENGINEERING SERVICES DIVISION-SOUTHEAST REGION  <b>JNU- FRITZ COVE                  INTERSECTION SAFETY                  IMPROVEMENTS                  HHE-00S(550)-68946</b>									
<b>TRAFFIC CONTROL PLAN</b>										
DESIGNED BY: D. FAGNANT DRAWN BY: D. FAGNANT										
PATH: Q:\JNU\68946\DR\FRITZ TCP.DWG TAB: G3      Tuesday, September 12, 2006 1:14 PM      WMHICKOK										
REVISIONS <table border="1" style="width: 100%; border-collapse: collapse;"> <thead> <tr> <th>NO.</th> <th>DATE</th> <th>DESCRIPTION</th> </tr> </thead> <tbody> <tr><td> </td><td> </td><td> </td></tr> <tr><td> </td><td> </td><td> </td></tr> </tbody> </table>	NO.	DATE	DESCRIPTION							PROJECT DESIGNATION      YEAR      SHEET NO.      TOTAL SHEETS HHE-00S(550)68946      2006      G3      10
NO.	DATE	DESCRIPTION								



DANDY BAG INLET PROTECTION  
3 SIDES, AFTER INSTALLATION



DO NOT SCALE FROM THESE DRAWINGS USE DIMENSIONS

CHECKED BY: J. HEUMANN

DESIGNED BY: M. LAVERING  
DRAWN BY: WMH

9/12/06

STATE OF ALASKA  
DEPARTMENT OF TRANSPORTATION  
& PUBLIC FACILITIES  
DESIGN & ENGINEERING SERVICES DIVISION-SOUTHEAST REGION

**JNU- FRITZ COVE  
INTERSECTION SAFETY  
IMPROVEMENTS  
HHE-00S(550)-68946**

**EROSION & SEDIMENT  
CONTROL PLAN**

PATH: Q:\JNU\58946\DR\68946_H1.DWG			YEAR: 2006		SHEET NO.: H1		TOTAL SHEETS: 10	
TAB: H1			DATE: Tuesday, September 12, 2006 1:14 PM		PROJECT DESIGNATION: HHE-00S(550)/68946		WMHICKOK	
REVISIONS			PROJECT DESIGNATION		YEAR		SHEET NO.	
NO.	DATE	DESCRIPTION	HHE-00S(550)/68946		2006		H1	