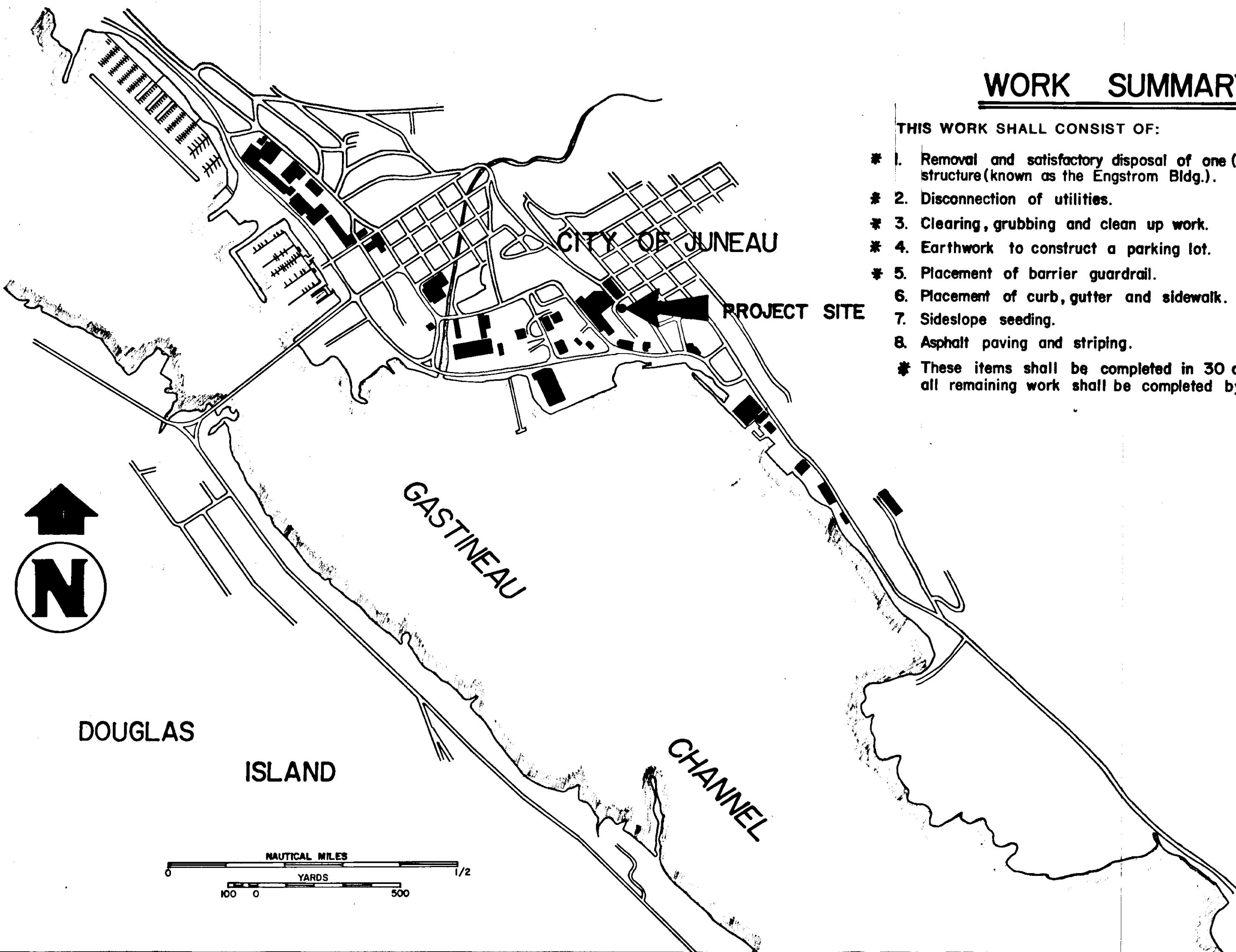


JUNEAU - 2ND STREET DEMOLITION/PARKING LOT

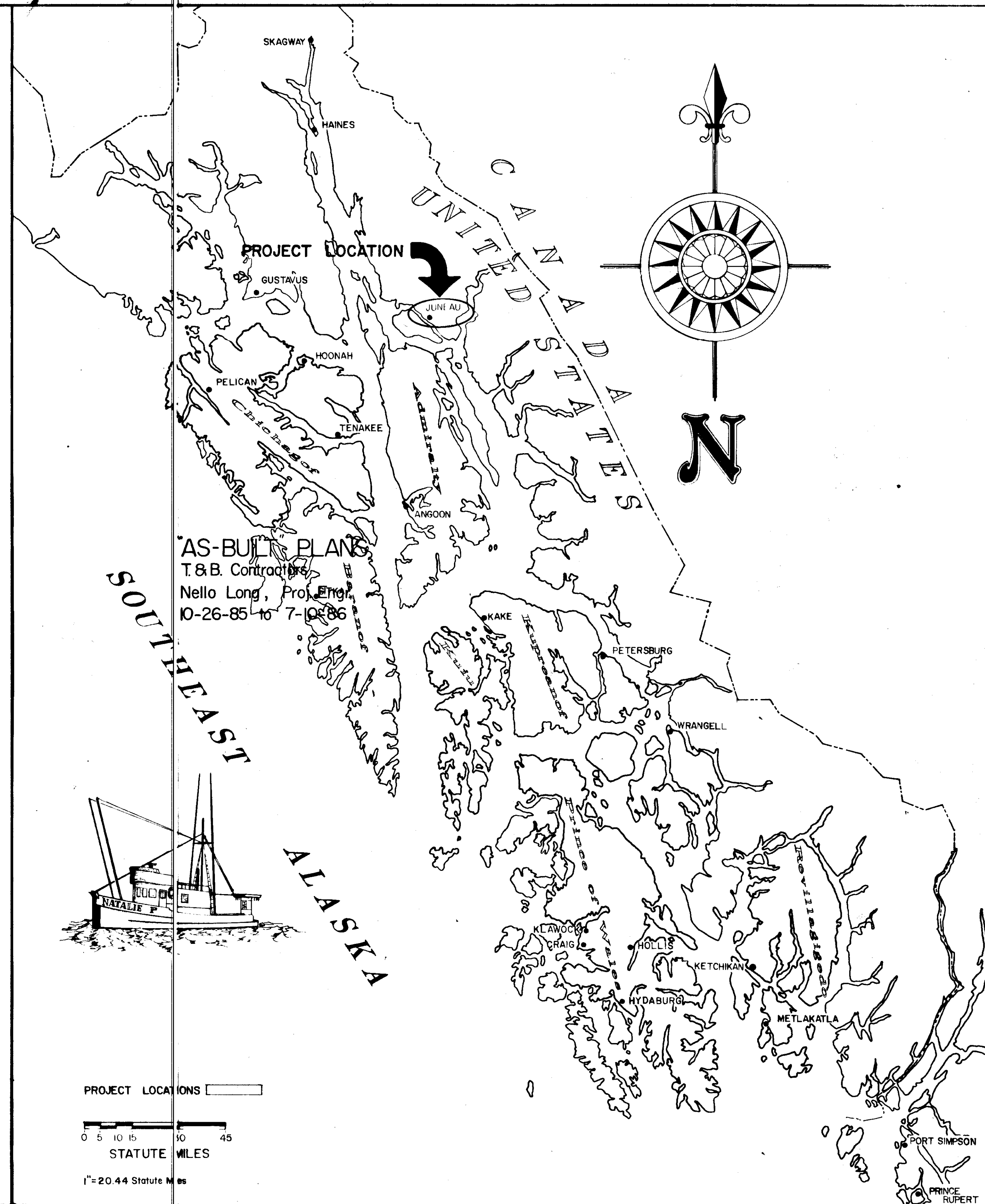
PROJECT NO. R-30167 (68771)



WORK SUMMARY

THIS WORK SHALL CONSIST OF:

- * 1. Removal and satisfactory disposal of one (1) wood frame structure (known as the Engstrom Bldg.).
- * 2. Disconnection of utilities.
- * 3. Clearing, grubbing and clean up work.
- * 4. Earthwork to construct a parking lot.
- * 5. Placement of barrier guardrail.
- * 6. Placement of curb, gutter and sidewalk.
- * 7. Sideslope seeding.
- * 8. Asphalt paving and striping.
- * These items shall be completed in 30 calendar days, all remaining work shall be completed by June/1/1986.



AS-BUILT PLANS
T & B Contractors
Nello Long, Proj. Eng.
10-26-85 to 7-10-86

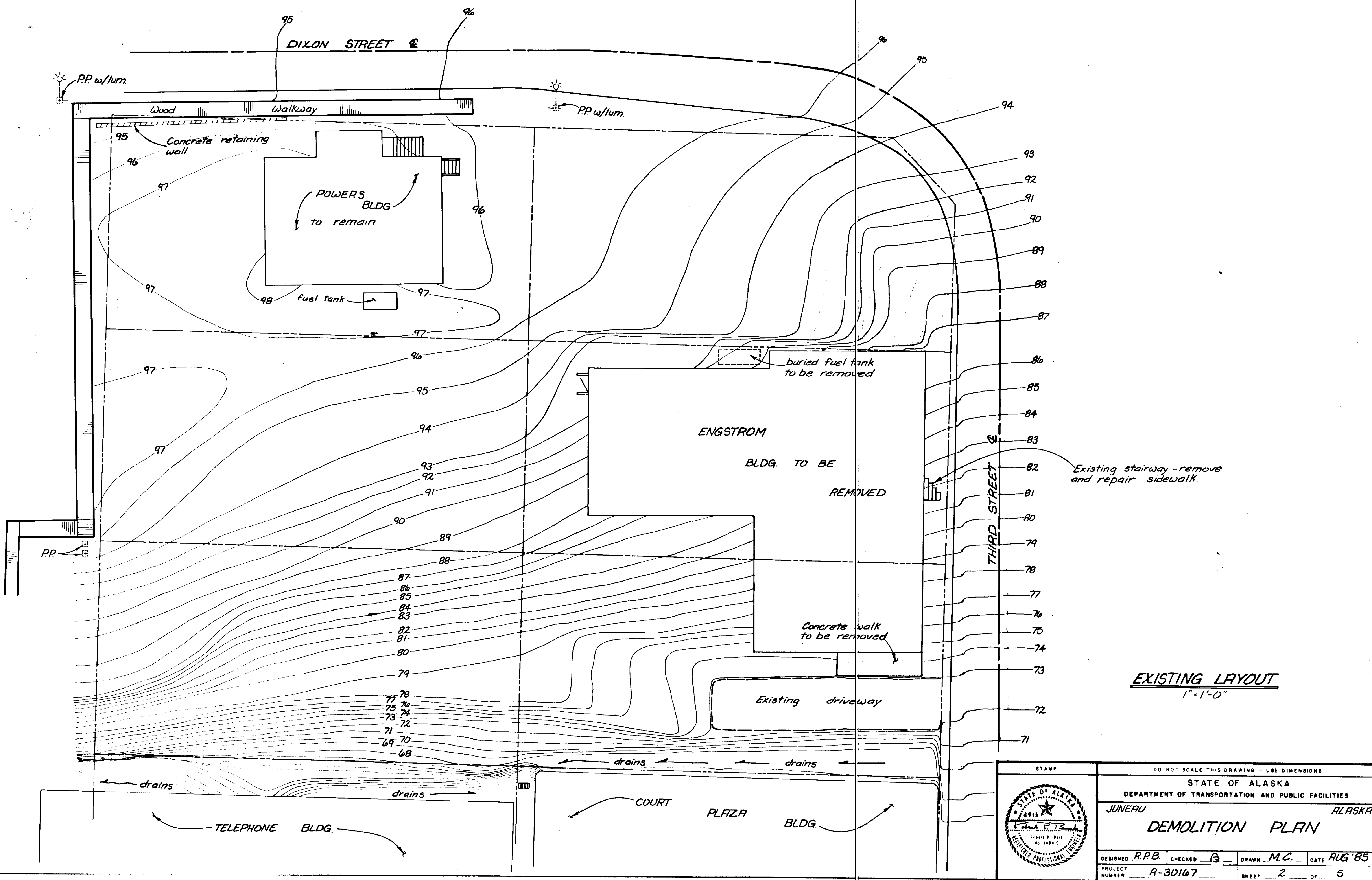
STATE OF ALASKA
DEPARTMENT OF TRANSPORTATION & PUBLIC FACILITIES
S.E. REGION DESIGN & CONSTRUCTION

APPROVED
Richard Meyer 9-11-85
Recommend for Approval
Steven O. Bradford 9-11-85
SHEET 1 of 5

1. TITLE & LOCATION	
2. DEMOLITION PLAN	
3. EARTHWORK LAYOUT	
4. MISC. DETAILS	
5. SIDEWALK DETAILS	

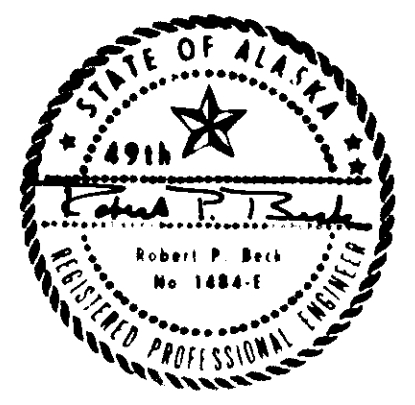
INDEX TO SHEETS

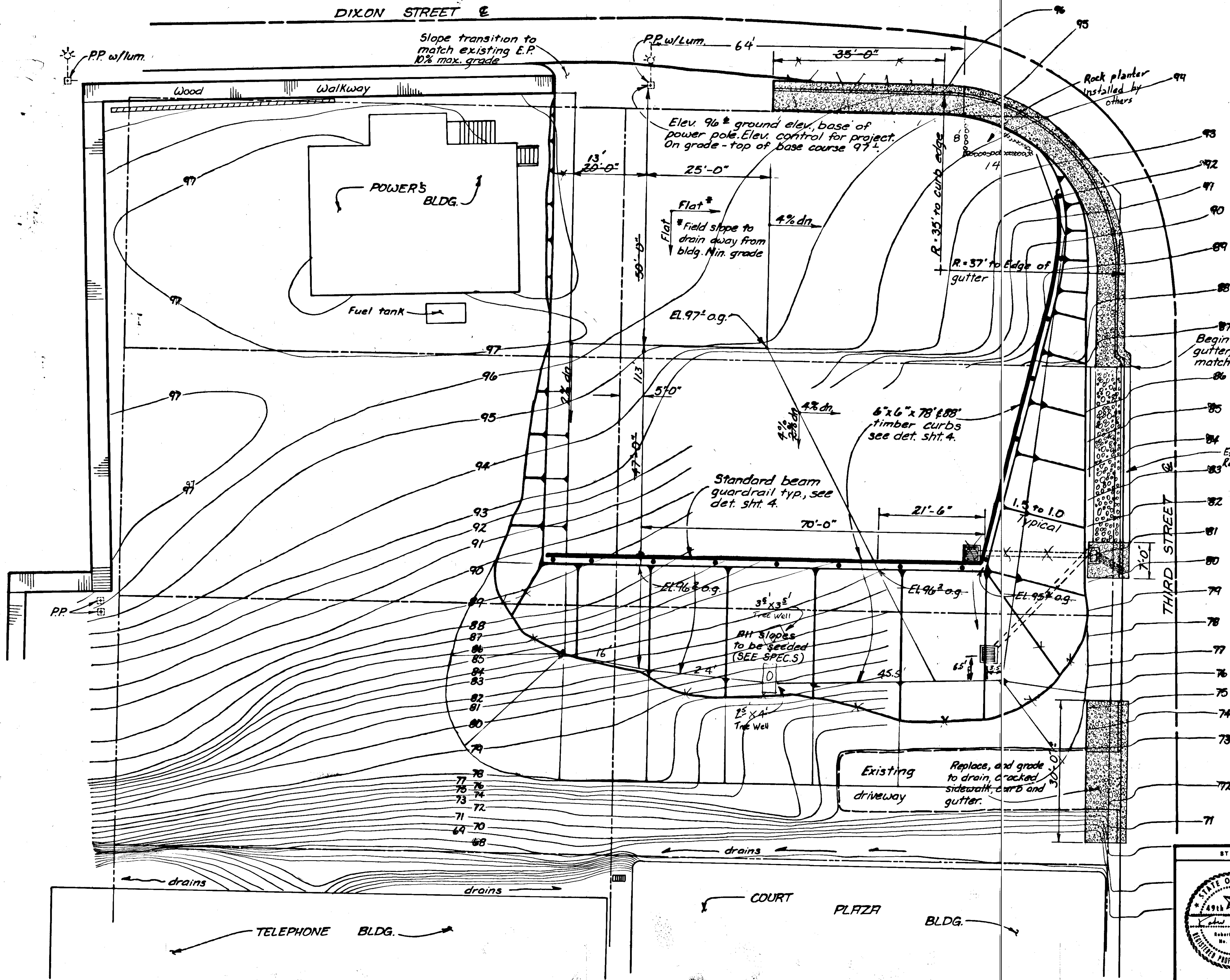
PROJECT & FILE NO.



EXISTING LAYOUT
1"=1'-0"

STAMP		DO NOT SCALE THIS DRAWING - USE DIMENSIONS	
STATE OF ALASKA DEPARTMENT OF TRANSPORTATION AND PUBLIC FACILITIES			
JUNEAU		ALASKA	
DEMOLITION PLAN			
DESIGNED R.P.B.	CHECKED 13	DRAWN M.C.	DATE AUG '85
PROJECT NUMBER R-30167		SHEET 2 OF 5	



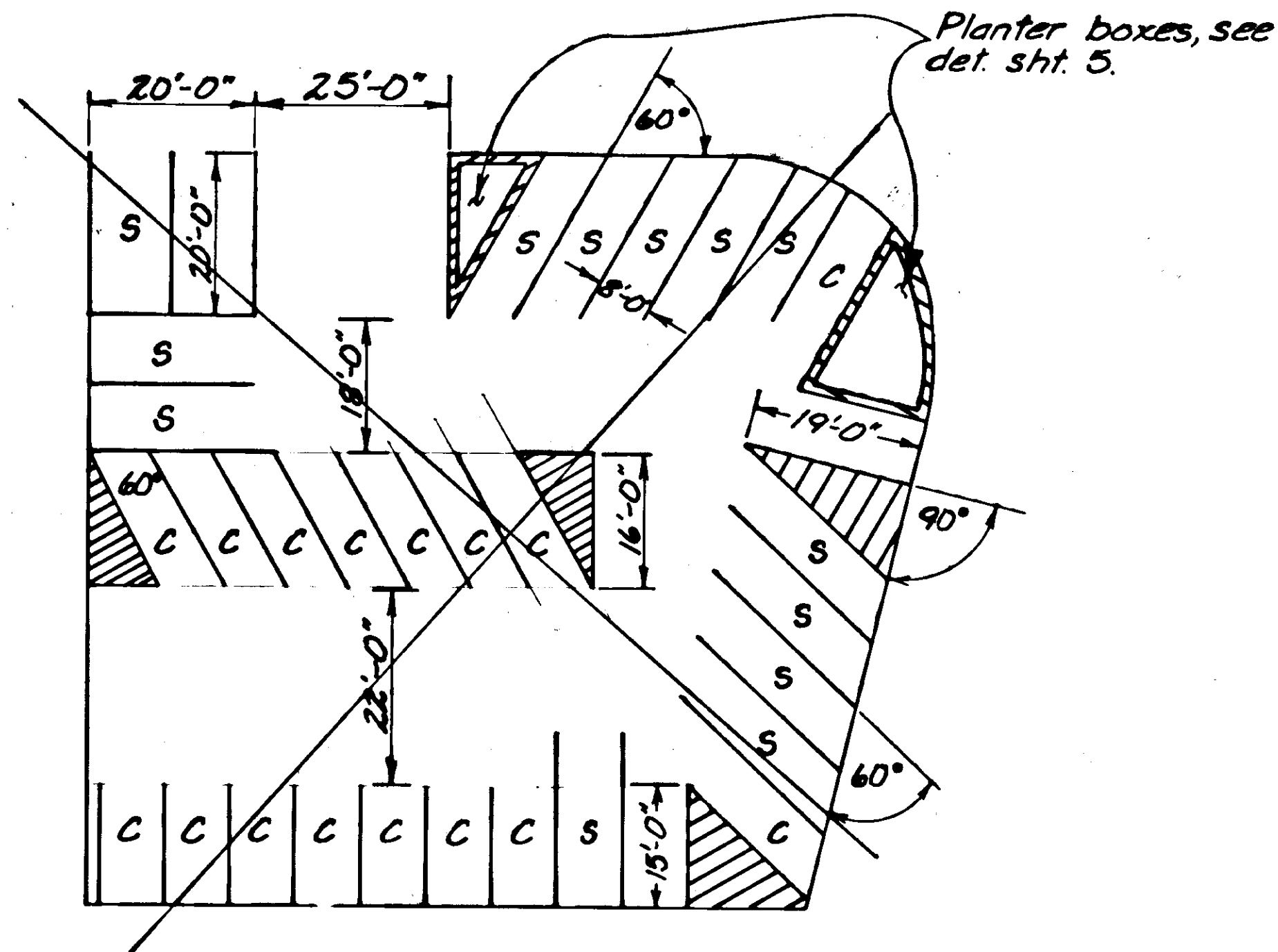


a.g. = on grade
 = top of base course
 = base of asphalt
 = 6" above top of subbase
 ⊕ original ground

PLAN LAYOUT
 1"=10'-0"

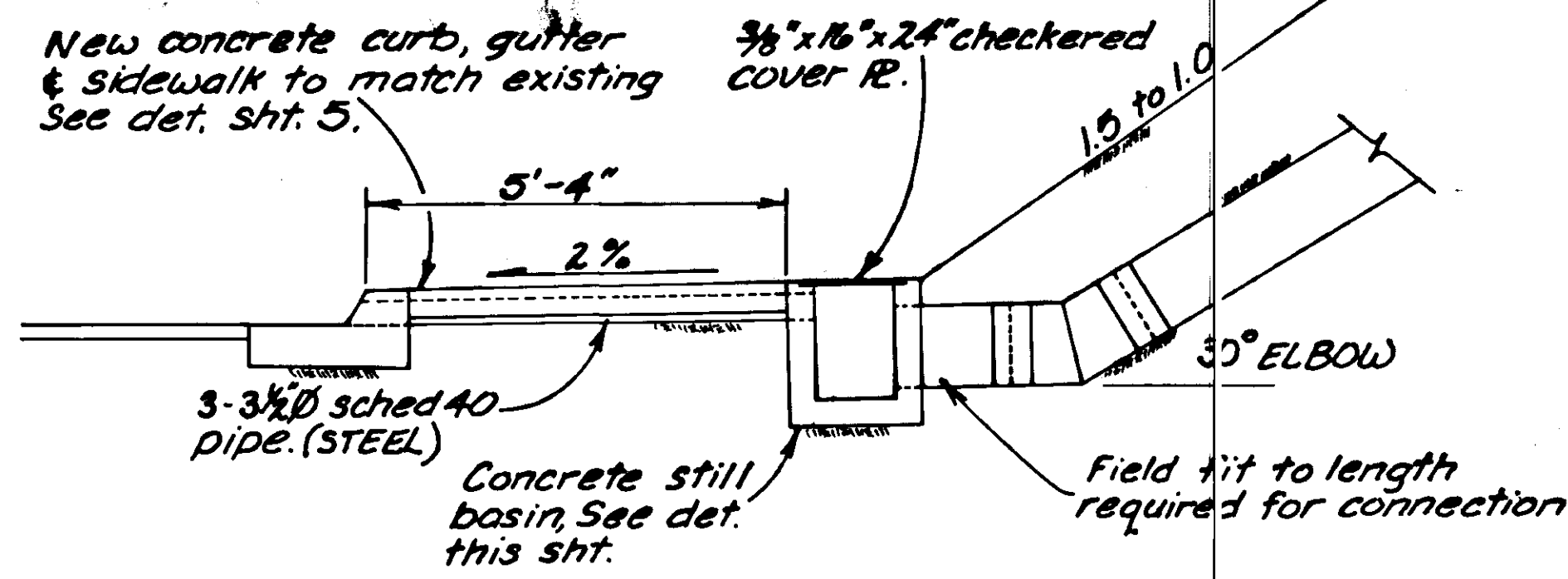
⊙ T.B.M. 74.485 elev.
 2" B.C. top cor. 1 1/2 high
 concrete wall 7'-0" out
 from south side old state
 office building ± 16'-0" S.W.
 of entrance (Marked "DEPT.
 OF HWYS. B.M. #2)

STAMP		DO NOT SCALE THIS DRAWING - USE DIMENSIONS	
STATE OF ALASKA DEPARTMENT OF TRANSPORTATION AND PUBLIC FACILITIES			
JUNEAU		ALASKA	
EARTHWORK LAYOUT			
DESIGNED R.P.B.	CHECKED <i>[Signature]</i>	DRAWN M.C.	DATE AUG '85
PROJECT NUMBER R-30167	SHEET 3		OF 5

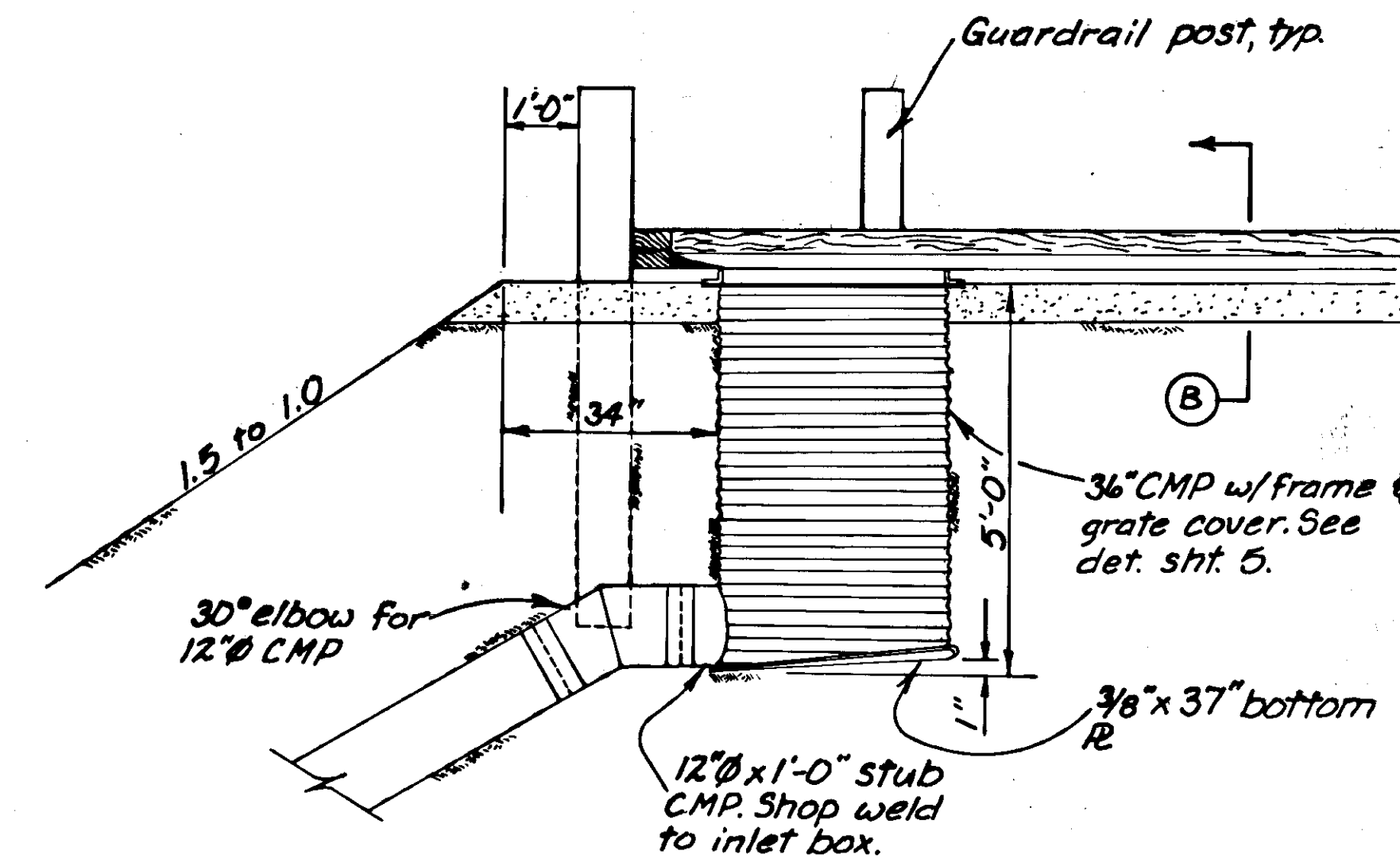


STRIPING PLAN
N.T.S.

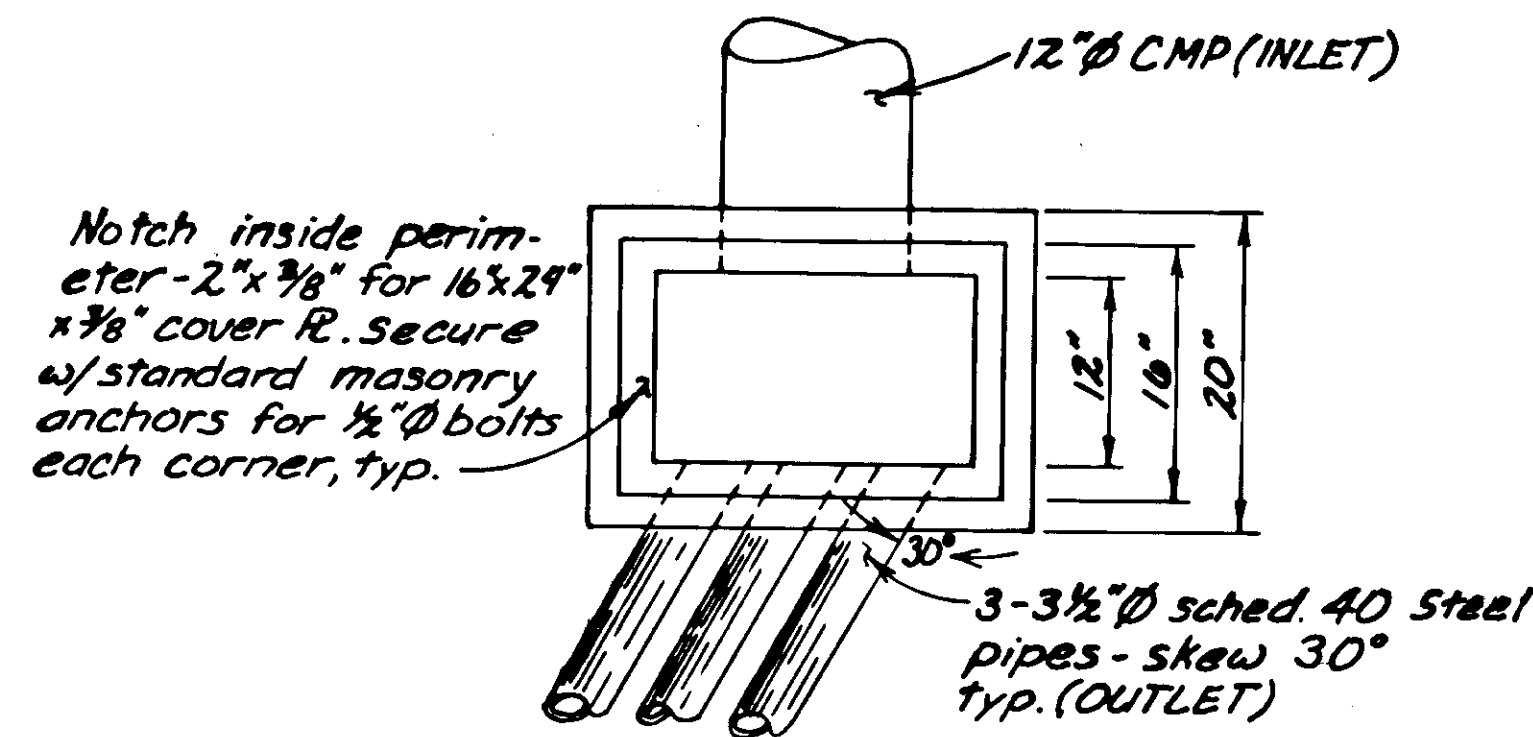
15- STANDARD
17- COMPACT



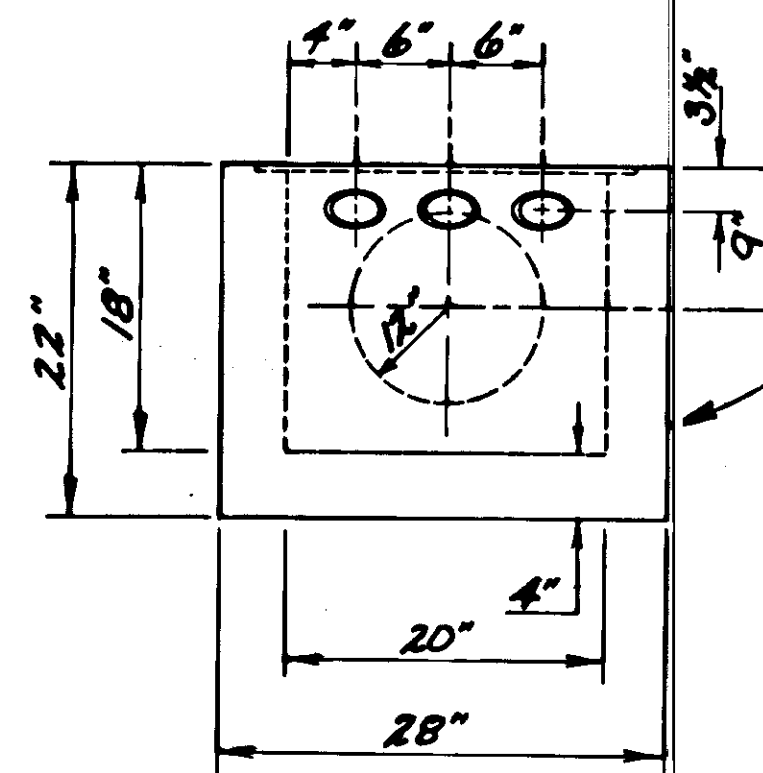
DRAINAGE OUTLET DETAIL



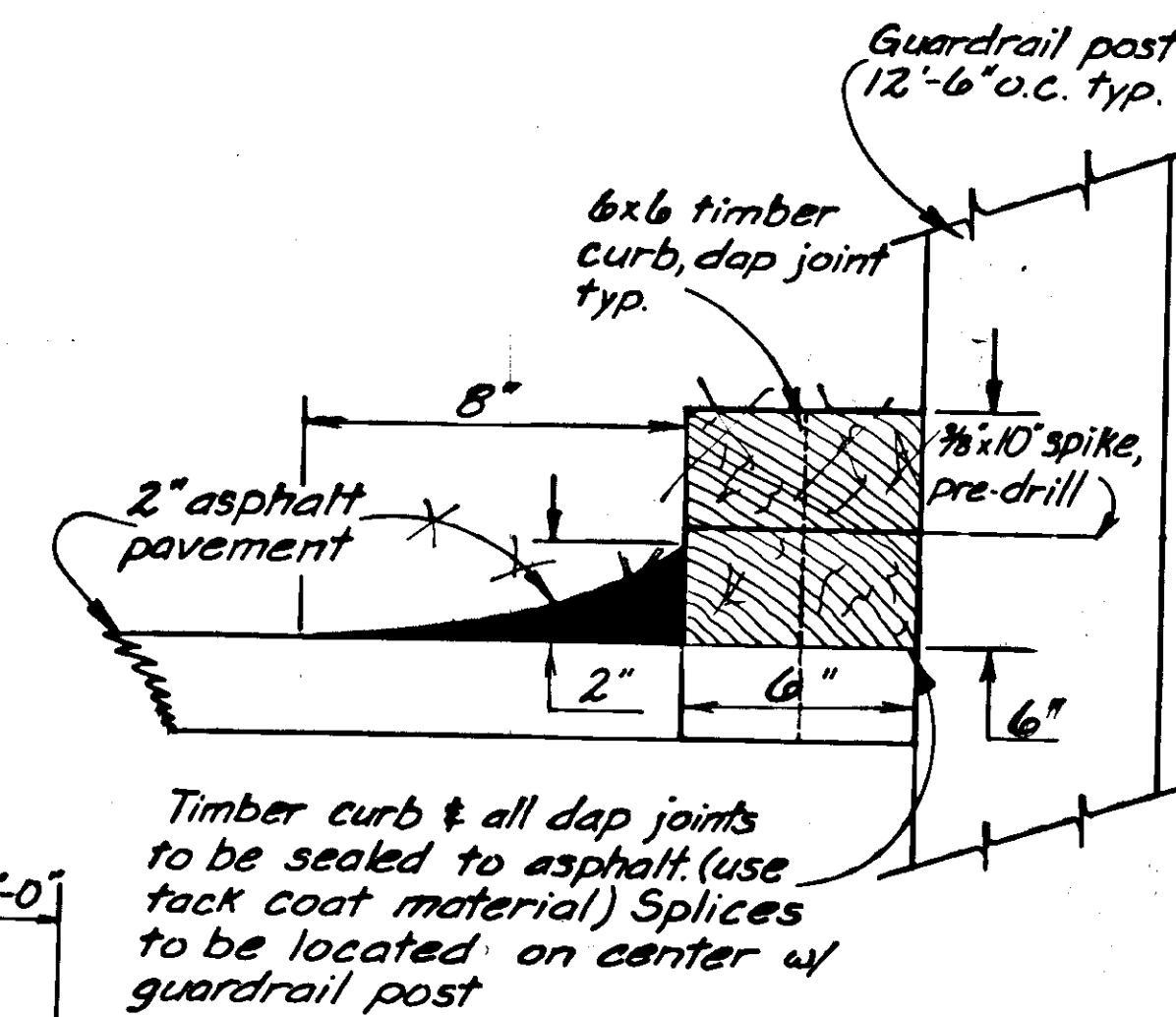
DRAINAGE INLET BOX



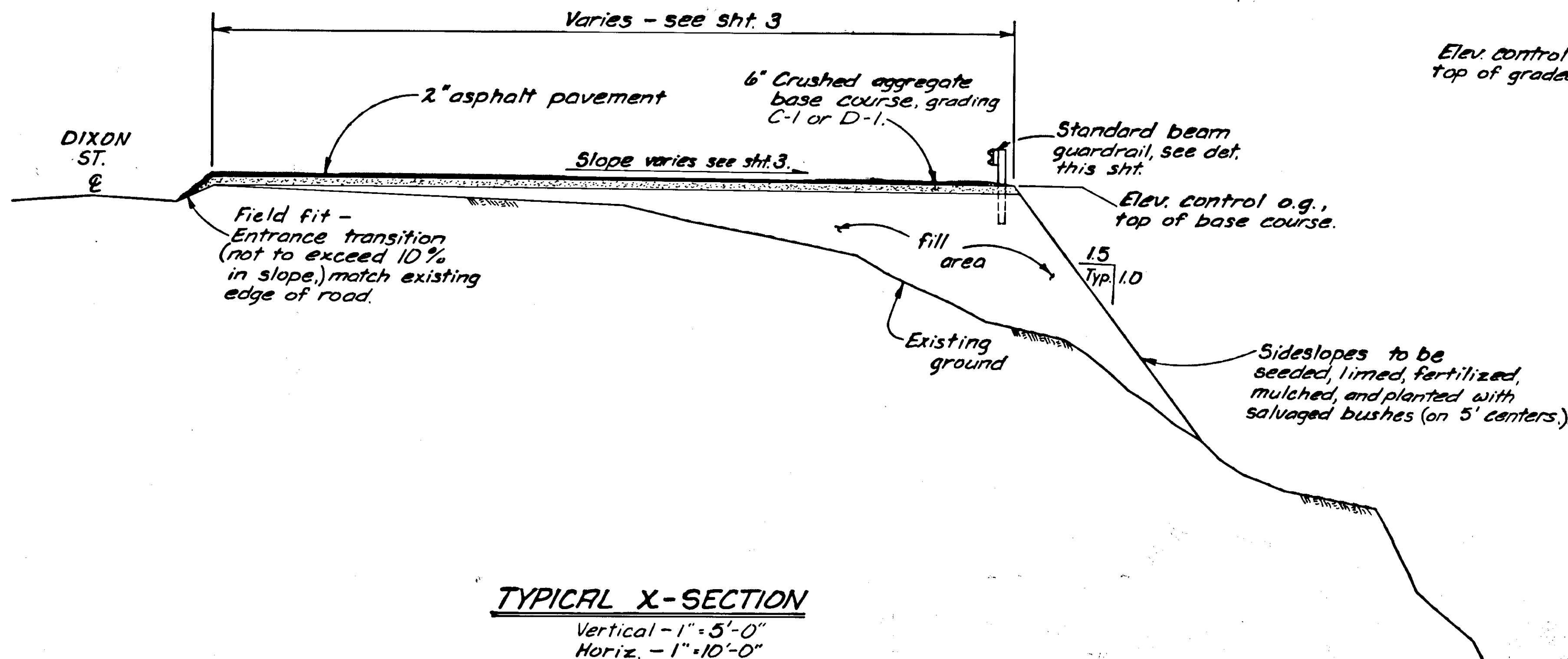
CONCRETE STILL BASIN DETAILS



NOTE: Reinforcing steel required; temp. steel as per U.B.C. standards.

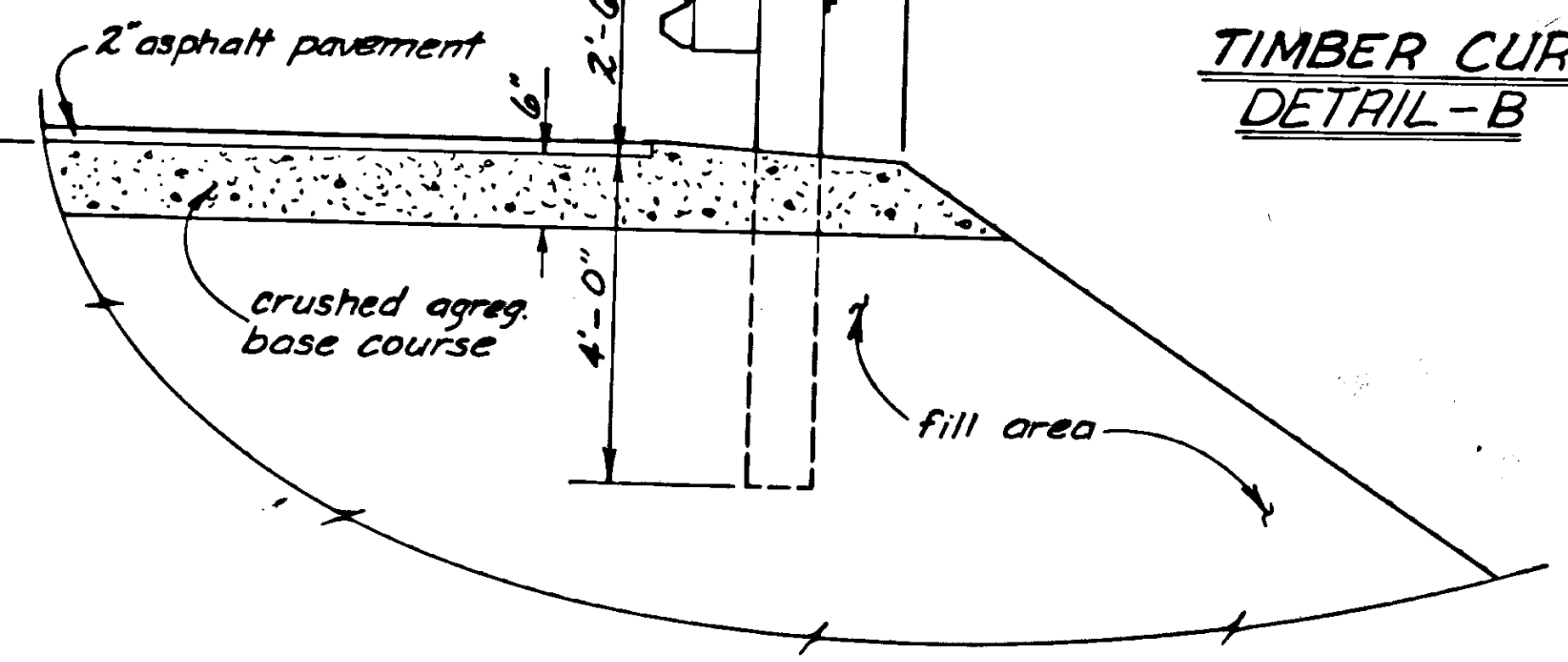


TIMBER CURB DETAIL-B



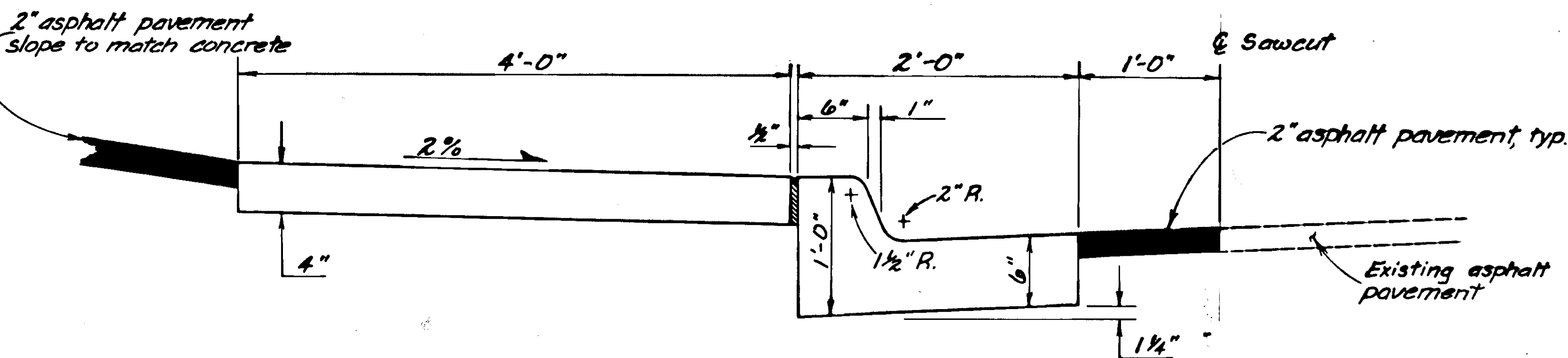
TYPICAL X-SECTION
Vertical - 1" = 5'-0"
Horiz. - 1" = 10'-0"

Elev. control o.g., top of graded fill.

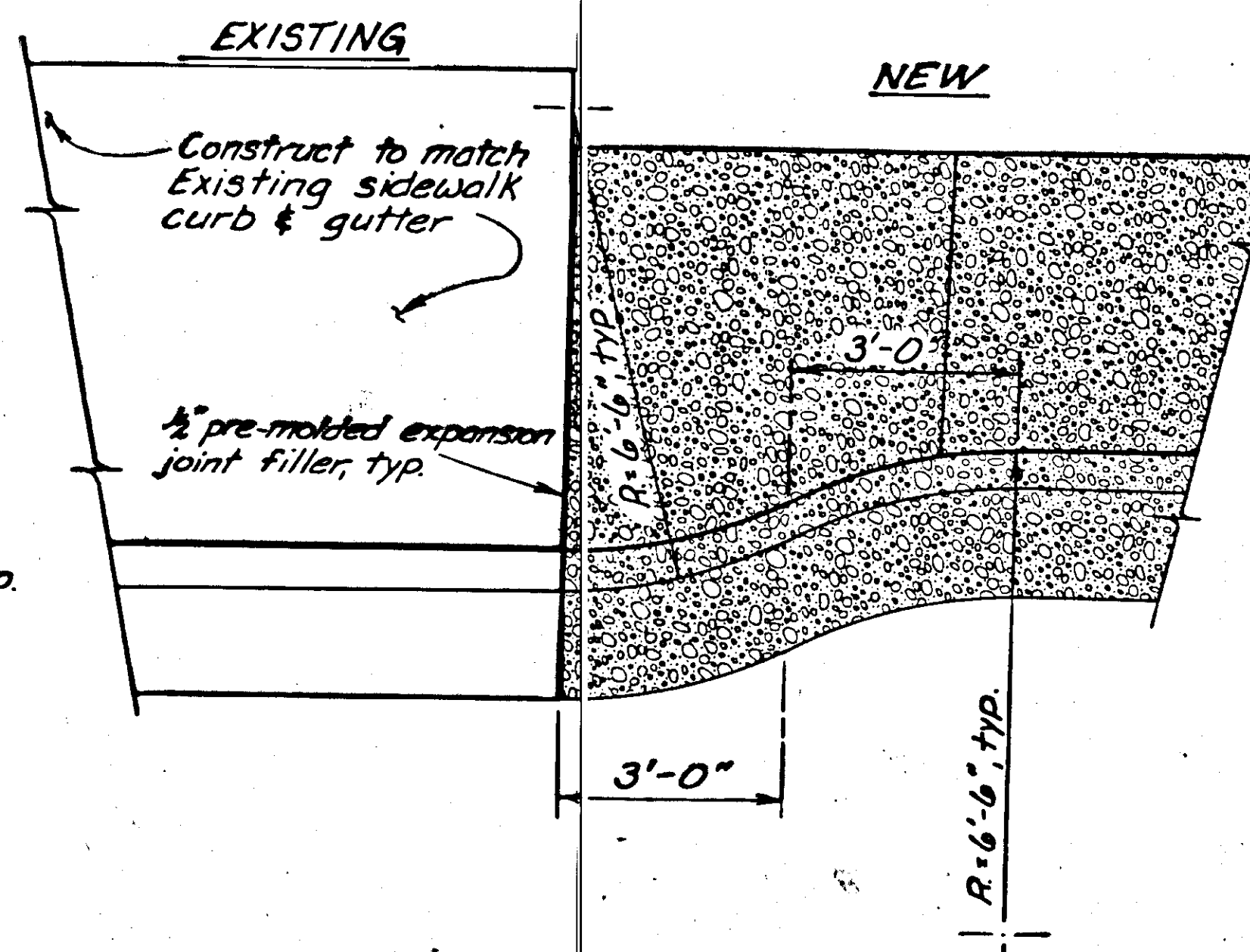


GUARDRAIL DETAIL
1" = 2'-0"

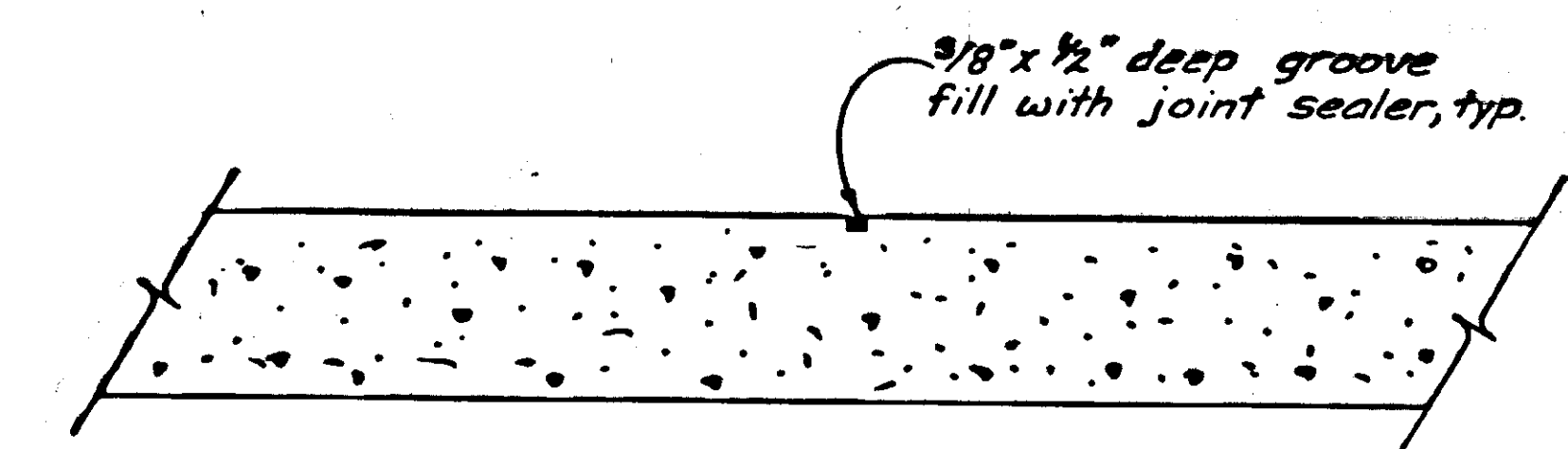
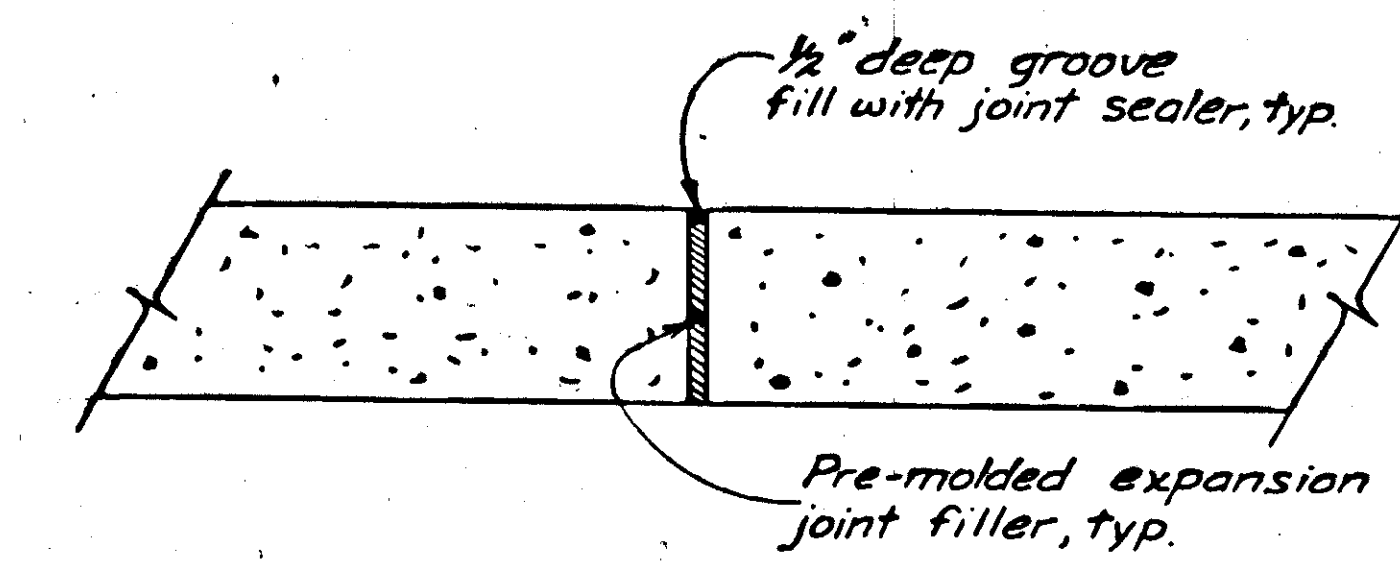
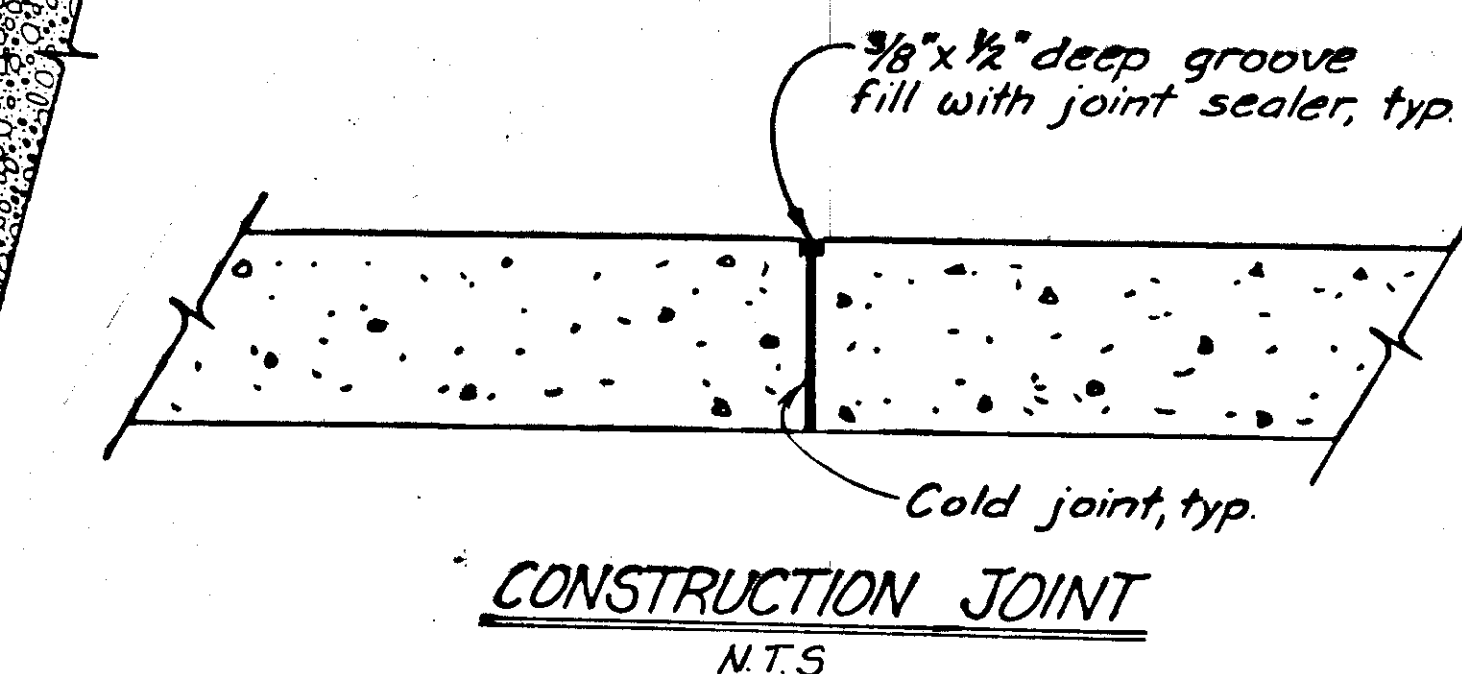
	DO NOT SCALE THIS DRAWING - USE DIMENSIONS			
	STATE OF ALASKA DEPARTMENT OF TRANSPORTATION AND PUBLIC FACILITIES			
JUNEAU	ALASKA		MISC. DETAILS	
DESIGNED R.P.B.	CHECKED [Signature]	DRAWN M.C.	DATE AUG '85	
PROJECT NUMBER R-30167	SHEET 4		OF 5	



TYPICAL X-SECTION
1/2" = 1'-0"



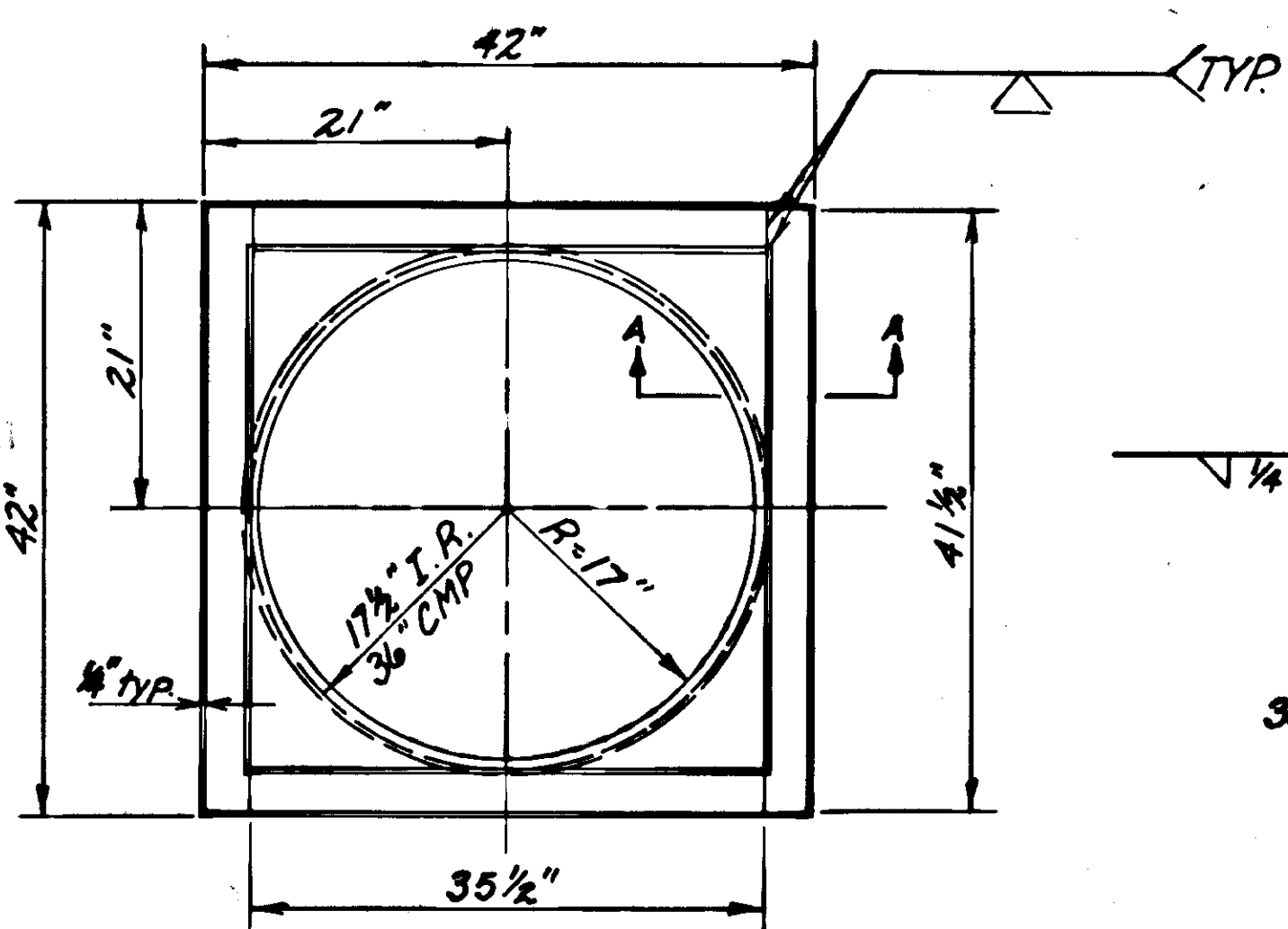
SIDEWALK TRANSITION DETAIL
1/2" = 1'-0"



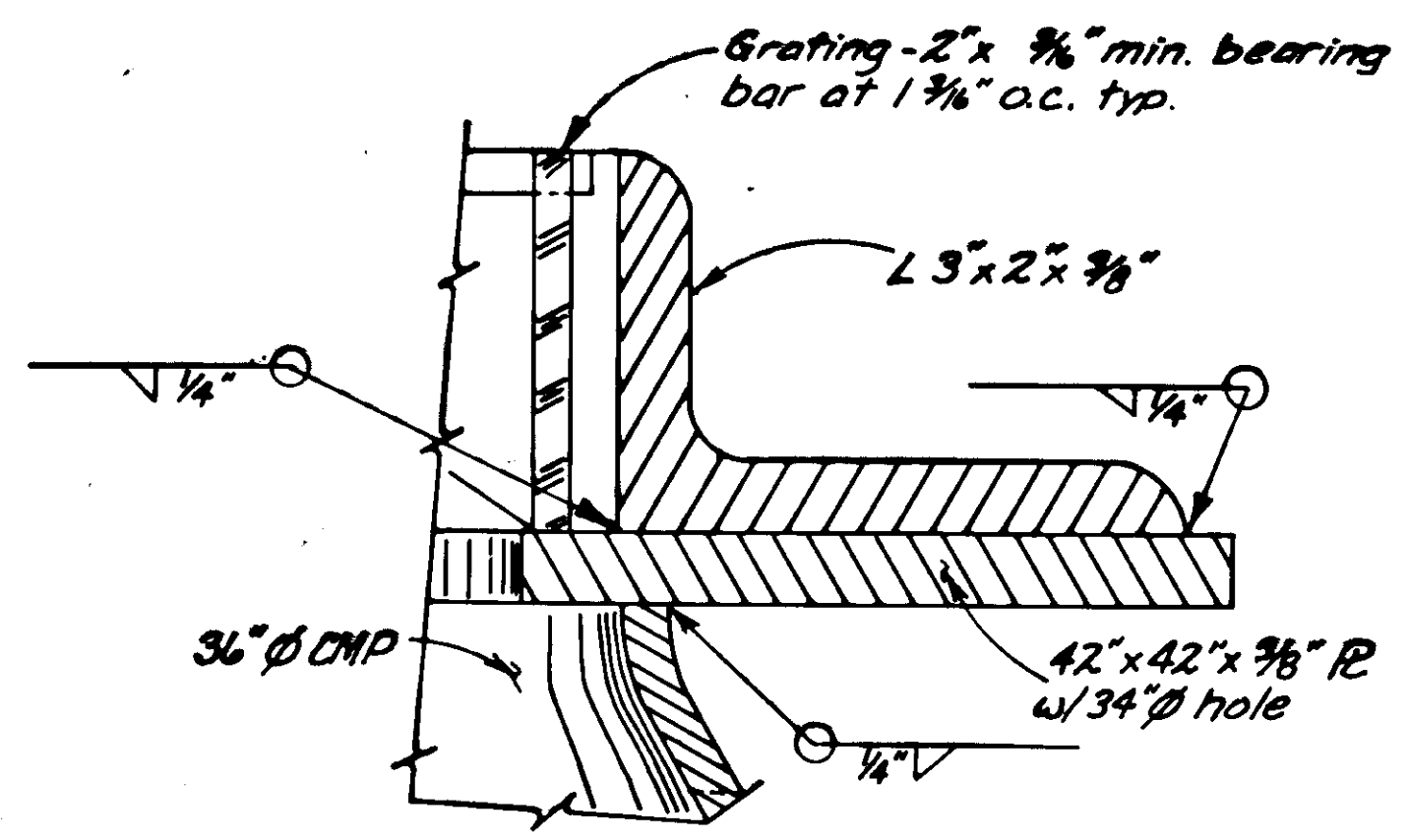
NOTES:

1. Sidewalk expansion joints shall be opposite expansion joints in adjoining curb and gutter and at 30' nominal spacing. Dummy joints shall be equally spaced between expansion joints - spacing shall not exceed 6' unless otherwise noted.
2. Pre-molded expansion joint material 1/2" thick shall be placed longitudinally where sidewalk abutts concrete structures, curb & gutter, existing sidewalk, etc.

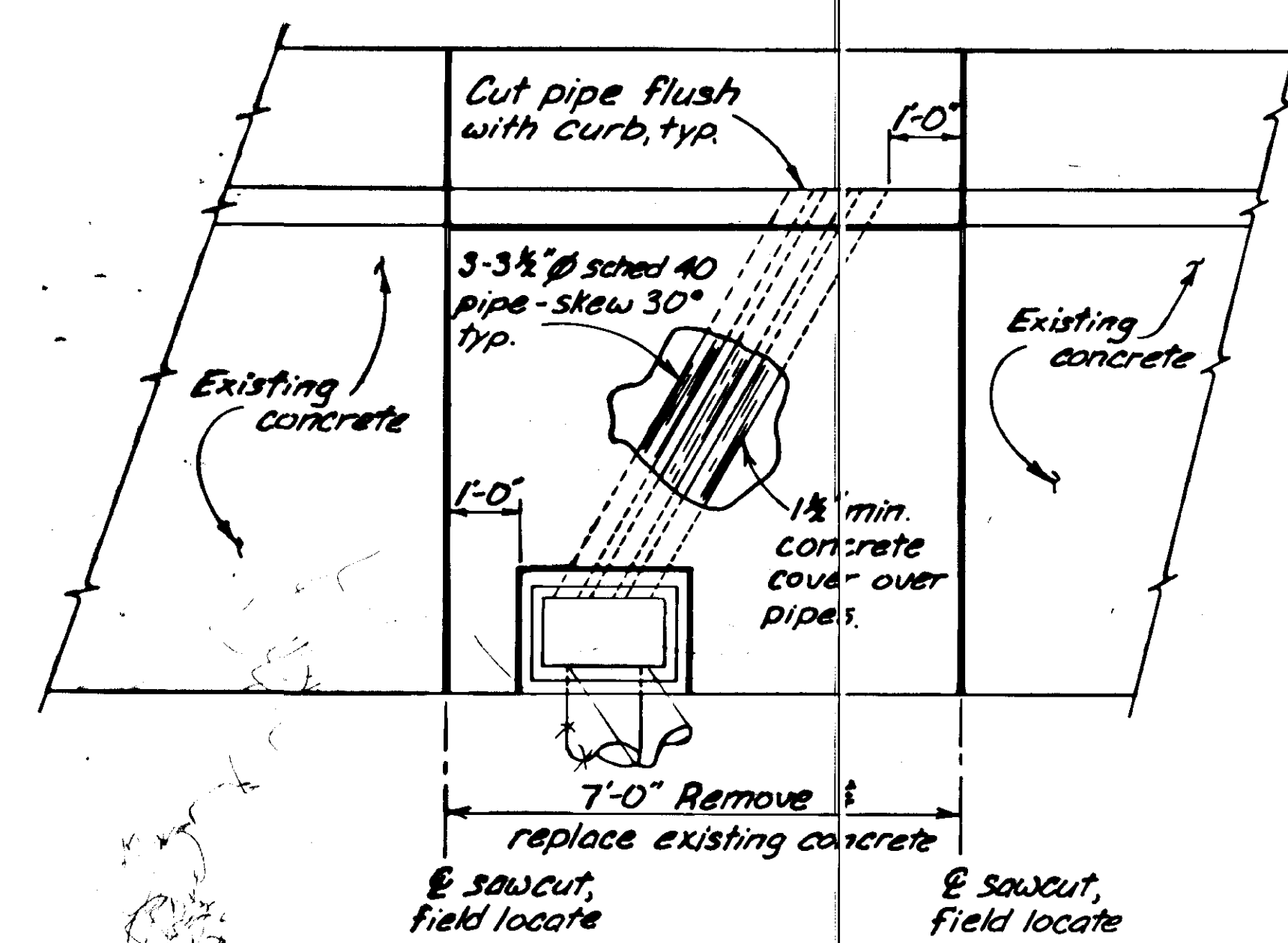
SIDEWALK JOINT DETAILS



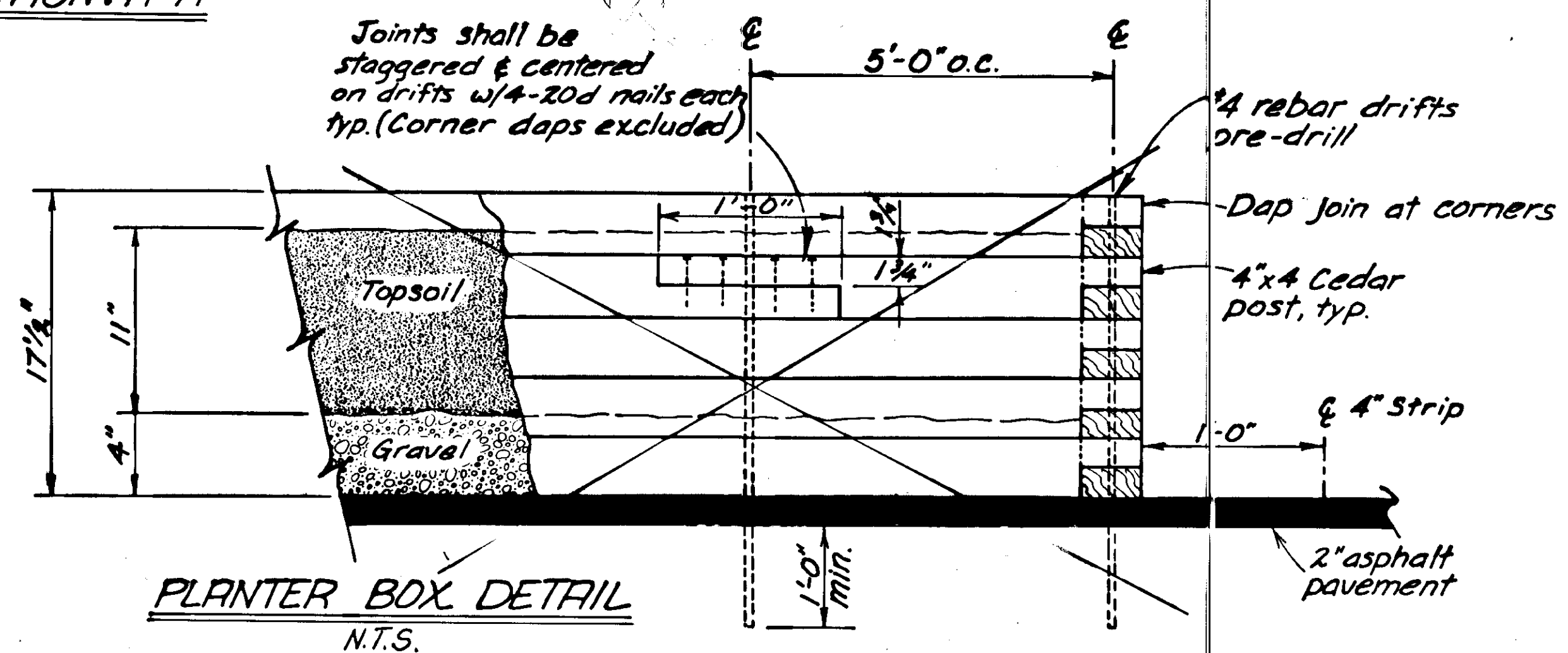
FRAME & GRATE DETAIL



SECTION: R-R



Joints shall be staggered & centered on drifts w/4-20d nails each tp. (Corner daps excluded)



PLANTER BOX DETAIL
N.T.S.

STAMP		DO NOT SCALE THIS DRAWING - USE DIMENSIONS	
		STATE OF ALASKA	
		DEPARTMENT OF TRANSPORTATION AND PUBLIC FACILITIES	
JUNEAU		ALASKA	
SIDEWALK DETAILS			
DESIGNED <i>R.P.B.</i>	CHECKED <i>Pa</i>	DRAWN <i>M.C.</i>	DATE <i>AUG. '85</i>
PROJECT NUMBER <i>R-30167</i>	SHEET <i>5</i>		OF <i>5</i>