

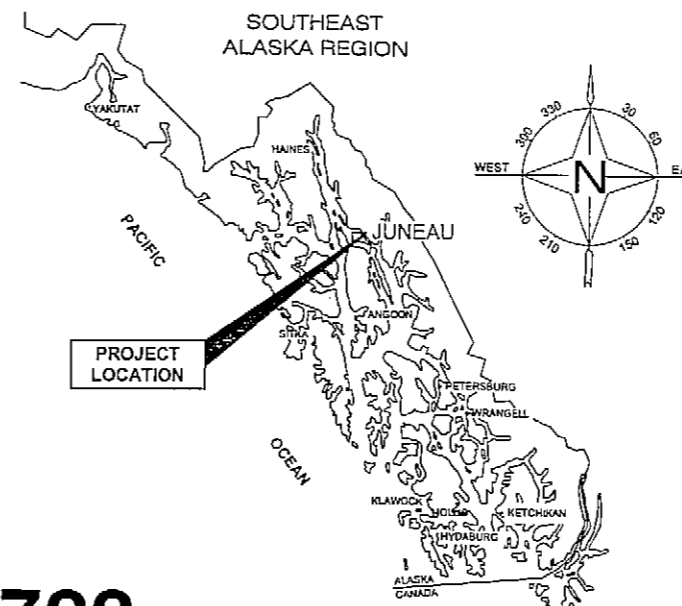
State of Alaska

Department of Transportation and Public Facilities

Southeast Region Design and Engineering Services Division

JUNEAU, ALASKA

JNU-EGAN DRIVE (Rebid) GUARDRAIL AT YANDUKIN DRIVE PROJECT No. ACHHE-093-2(44) ~ 68722



AS-BUILT DRAWINGS

CONTRACTOR: ADMIRALTY CONSTRUCTION
 BEGIN DATE: APRIL 24, 2006
 END DATE: JULY 31, 2006
 PROJ. ENGR: THAD HOPPER

PROJECT SUMMARY

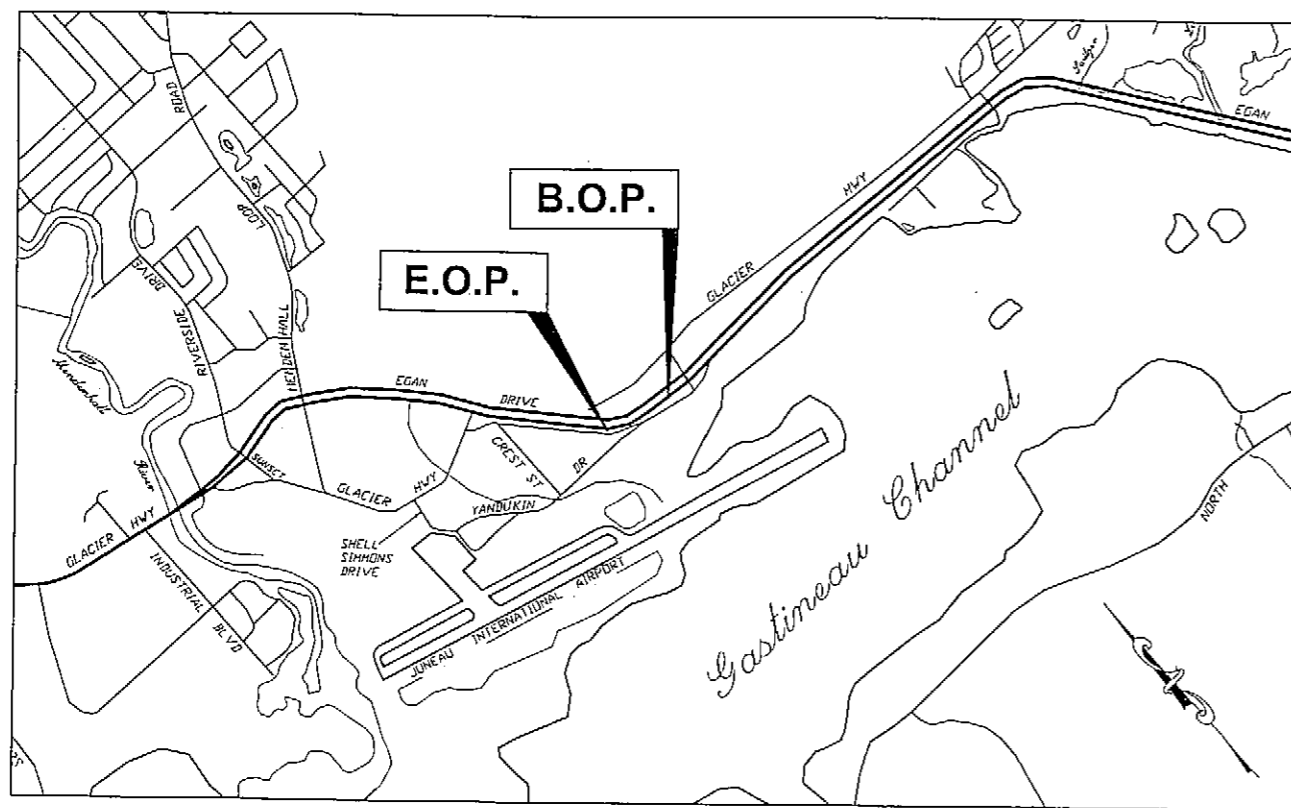
LENGTH OF PROJECT = .25 MILES (1,350')

DESIGN DESIGNATION

A.D.T. 2006	=	27,500
A.D.T. 2011	=	30,370
D.H.V. 2016	=	33,550
% T	=	3.7%
V	=	55 MPH
E.A.L.	=	1,050,000

THE FOLLOWING STANDARD DRAWINGS APPLY TO THIS PROJECT:

A-1	G-04.06S	G-20.10
C-04.12	G-04.07W	T-34.01
G-00.01	G-10.01	



VICINITY MAP

INDEX

SHEET NO.	DESCRIPTION
A1	TITLE SHEET
B1	ESTIMATE OF QUANTITIES & TYPICAL SECTION
F1	PLAN VIEW
S1	TRAFFIC CONTROL PLAN

PATH: O:\jnu\68722\planset\A1_Tshl.dwg
 Wed, 1/June/05 11:27AM

PLOT: PSPACE OR MSPACE: 1=1(F)

STATE OF ALASKA
 DEPARTMENT OF TRANSPORTATION
 & PUBLIC FACILITIES
 SOUTHEAST REGION DESIGN & ENGINEERING SERVICES DIVISION



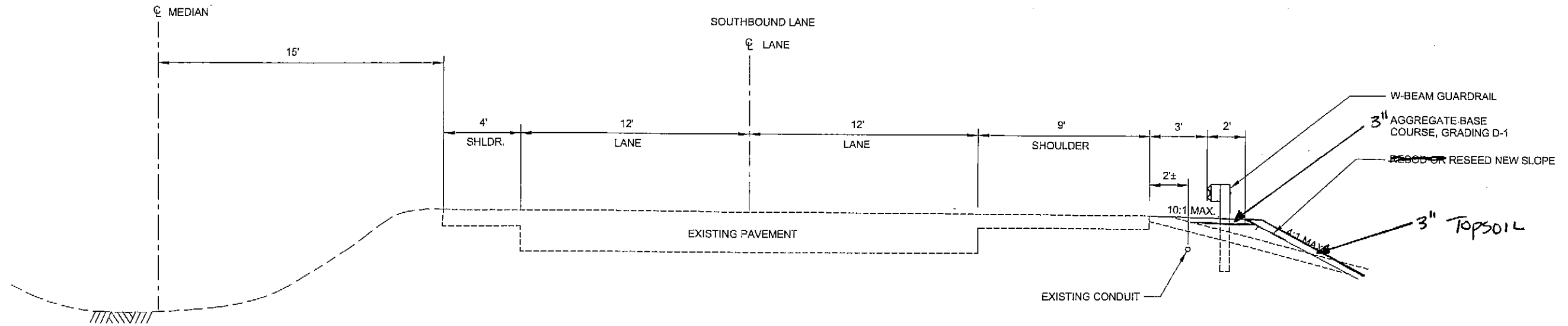
APPROVED: *[Signature]* 12/7/05
 REGIONAL PRE-CONSTRUCTION ENGINEER
 PATRICK J. KEMP, P.E. DATE

APPROVED: *[Signature]* 12/7/05
 DIRECTOR, SOUTHEAST REGION
 MA DATE

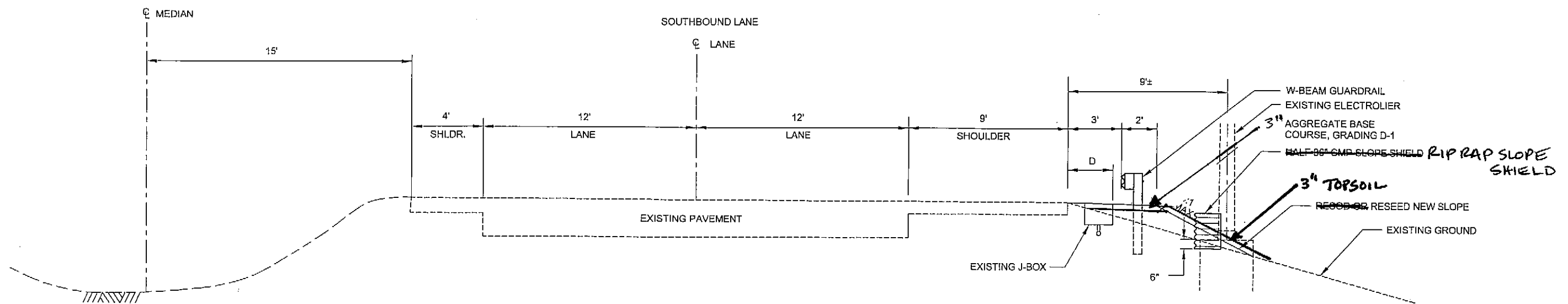
Project As-Built Drawings have been reviewed by the Project Engineer and represent to the best of my knowledge, the project as constructed.

CC Proj. Engr. *[Signature]* Date 01/21/06 TE

STATE	PROJECT DESIGNATION	YEAR	SHEET NO.	TOTAL SHEETS
ALASKA	ACHHE-093-2(44)\68722	2005	A1	4



TYPICAL SECTION



TYPICAL SECTION AT ELECTROLIER

J-BOX	D
3	2' 5"
4	2' 5"
5	2' 10"
6	2' 7"
7	2' 7"
8	2' 3"
9	3' 2"
10	2' 11"
11	2' 4"

ITEM NO.	PAY ITEM	PAY UNIT	QUANTITY
660 (14)	J-BOX, CONDUIT OR WIRE ADJUSTMENT	CONTINGENT SUM	EACH
801 (1)	EGAN DRIVE GUARDRAIL SAFETY IMPROVEMENT	LUMP SUM	ALL REQUIRED

SPECIFICATION SECTION	ITEM	UNIT	QUANTITY
301	AGGREGATE BASE COURSE, GRADING D-1	TON	1,050
603	HALF 36" CMP SLOPE SHIELD	EACH	9
606	W-BEAM GUARDRAIL	LINEAR FOOT	1,425
606	EXTRUDER TERMINAL (ET-2000)	EACH	2
618	SEEDING	LUMP SUM	ALL REQUIRED
640	MOBILIZATION & DEMOBILIZATION	LUMP SUM	ALL REQUIRED
641	TEMPORARY EROSION & POLLUTION CONTROL	CONTINGENT SUM	ALL REQUIRED
643	TRAFFIC CONTROL/MAINTENANCE	LUMP SUM	ALL REQUIRED

NOTES:

- SEE STANDARD DRAWING G-20.10 FOR WIDENING FOR THE TERMINAL END.
- THE CONTRACTOR SHALL DO A FIELD LOCATE ON THE LIGHTING SYSTEM CONDUIT AND J-BOXES PRIOR TO BEGINNING CONSTRUCTION. GUARDRAIL POST PLACEMENT SHALL BE STAKED OUT IN THE FIELD BEFORE INSTALLATION. POST PLACEMENT SHALL BE ADJUSTED TO ELIMINATE OR MINIMIZE CONFLICTS WITH CONDUIT RUNS FROM LUMINAIRES TO THE JUNCTION BOXES SERVICING THEM. THE PROJECT ENGINEER SHALL APPROVE THE FINAL POST PLACEMENT AND DIRECT THE RESOLUTION OF ANY CONFLICTS BEFORE INSTALLING GUARDRAIL.

DO NOT SCALE FROM THESE DRAWINGS USE DIMENSIONS

CHECKED BY: R. PURVES

DESIGNED BY: K. MATTSOEN
DRAWN BY: D. STEVENS

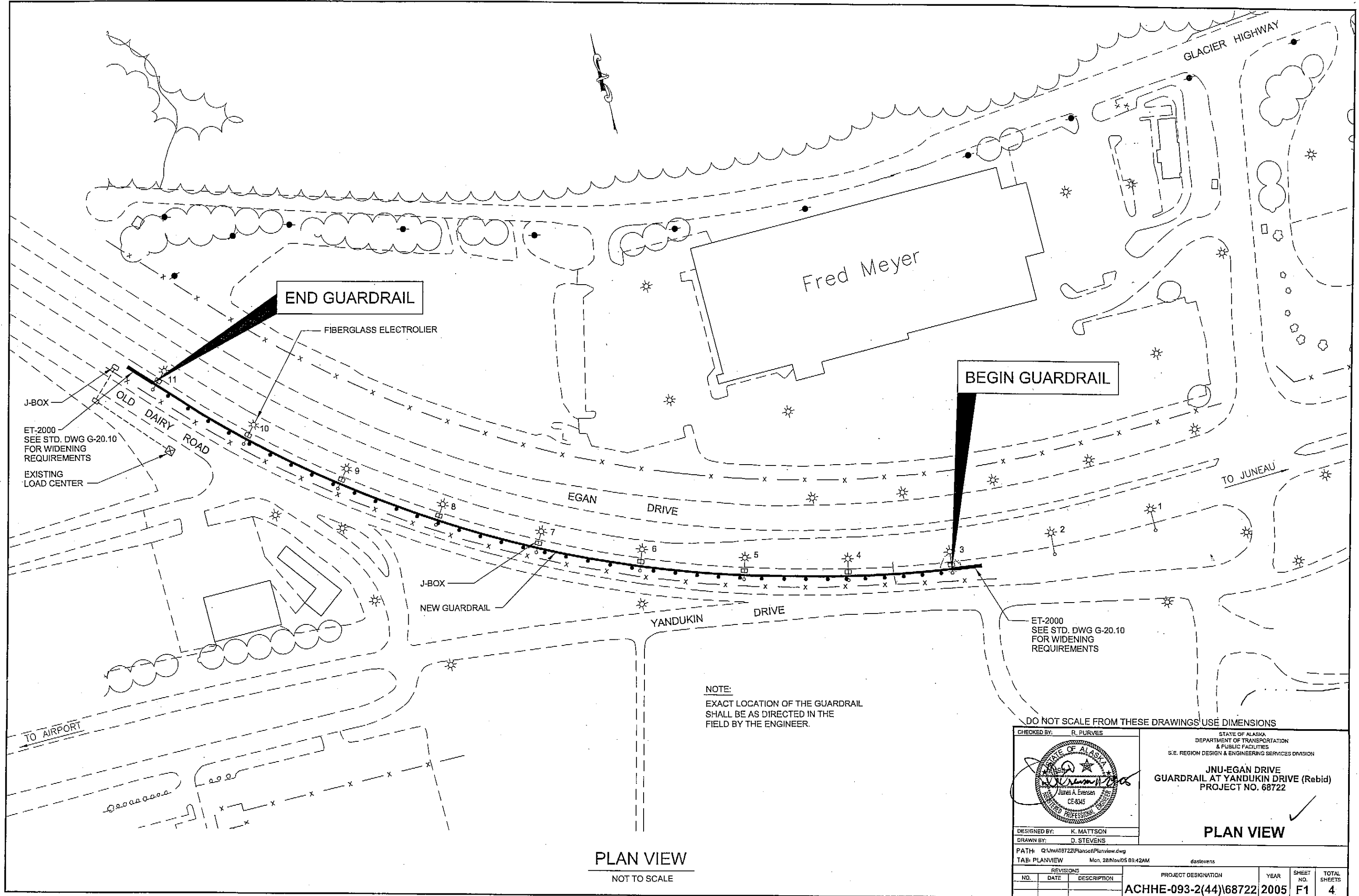
STATE OF ALASKA
DEPARTMENT OF TRANSPORTATION & PUBLIC FACILITIES
S.E. REGION DESIGN & ENGINEERING SERVICES DIVISION

JNU-EGAN DRIVE
GUARDRAIL AT YANDUKIN DRIVE (Rebid)
PROJECT NO. 68722

ESTIMATE OF QUANTITIES & TYPICAL SECTION

PATH: Q:\nu\59722\PlanSet\Typesect.dwg
TAB: B1 Tue, 06/Dec/05 10:47AM dastevens

NO.	DATE	DESCRIPTION	PROJECT DESIGNATION	YEAR	SHEET NO.	TOTAL SHEETS
			ACHHE-093-2(44)\68722	2005	B1	4



END GUARDRAIL

BEGIN GUARDRAIL

ET-2000
SEE STD. DWG G-20.10
FOR WIDENING
REQUIREMENTS
EXISTING
LOAD CENTER

ET-2000
SEE STD. DWG G-20.10
FOR WIDENING
REQUIREMENTS

NOTE:
EXACT LOCATION OF THE GUARDRAIL
SHALL BE AS DIRECTED IN THE
FIELD BY THE ENGINEER.

DO NOT SCALE FROM THESE DRAWINGS USE DIMENSIONS

CHECKED BY: R. PURVES

STATE OF ALASKA
DEPARTMENT OF TRANSPORTATION
& PUBLIC FACILITIES
S.E. REGION DESIGN & ENGINEERING SERVICES DIVISION

**JNU-EGAN DRIVE
GUARDRAIL AT YANDUKIN DRIVE (Rebid)
PROJECT NO. 68722**

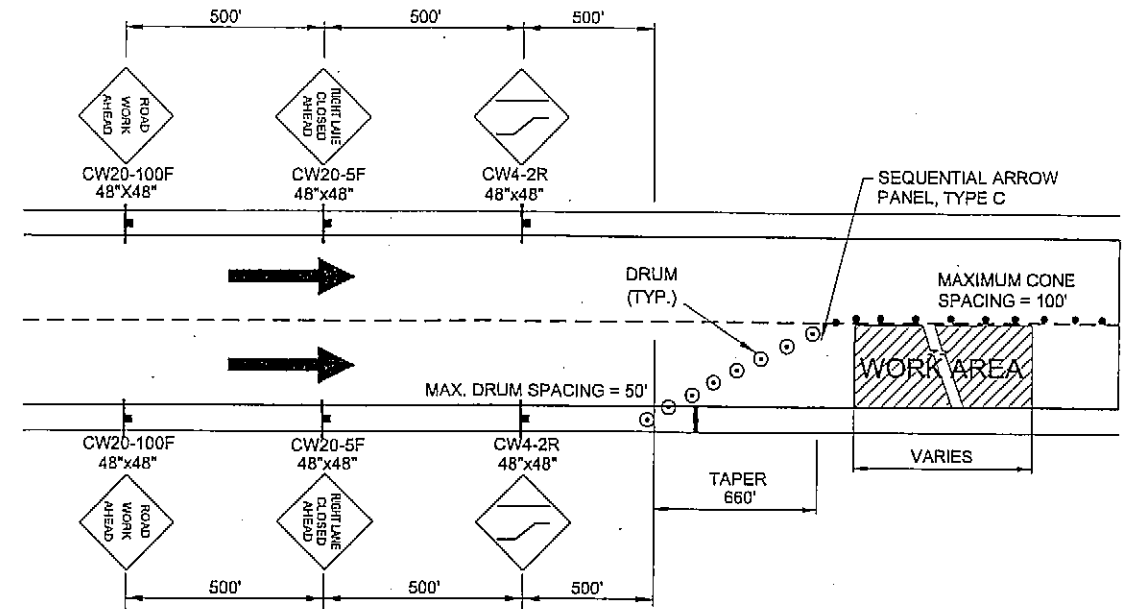
PLAN VIEW

PLAN VIEW
NOT TO SCALE

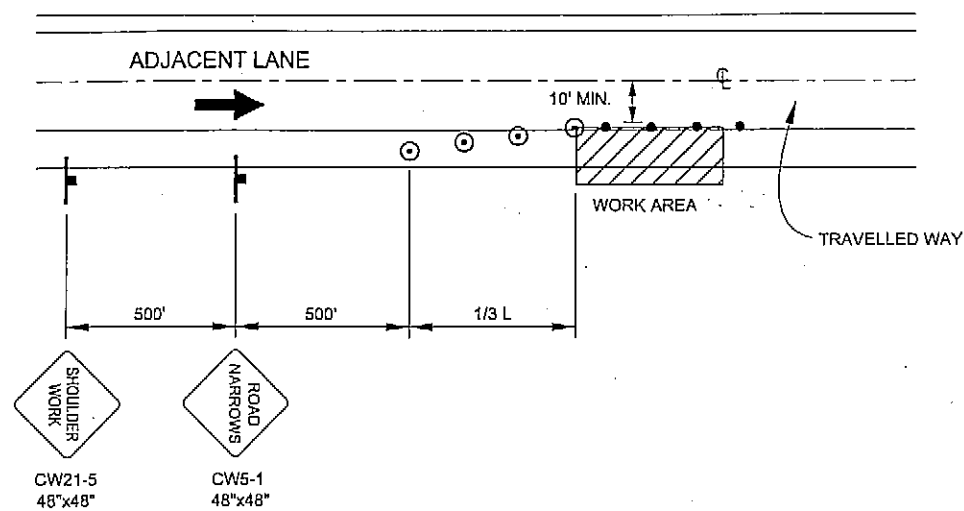
DESIGNED BY: K. MATTSON	PROJECT DESIGNATION ACHHE-093-2(44)\68722	YEAR 2005	SHEET NO. F1	TOTAL SHEETS 4
DRAWN BY: D. STEVENS				
PATH: Q:\Unl\68722\PlanSet\Planview.dwg				
TAB: PLANVIEW Mon, 28 Nov 05 09:42AM dastevens				
REVISIONS				
NO. DATE DESCRIPTION				

TRAFFIC CONTROL NOTES

1. IT IS THE INTENT OF THIS TRAFFIC CONTROL PLAN (TCP) TO ILLUSTRATE SOME BUT NOT ALL OF THE TRAFFIC CONTROL CONFIGURATIONS THAT WILL BE REQUIRED BY THIS PROJECT. TRAFFIC CONTROL PLANS FOR CONFIGURATIONS NOT COVERED BY THIS TCP SHALL BE DEVELOPED BY THE CONTRACTOR AND SUBMITTED TO THE ENGINEER FOR APPROVAL PRIOR TO USE.
2. TRAFFIC LANES SHALL BE A MINIMUM OF 10' WIDE.
3. DURING THE MORNING AM PEAK (7:00 TO 8:30 AM) AND EVENING PM PEAK (3:30 TO 6:00 PM) THE CONTRACTOR SHALL MAINTAIN BOTH LANES OF TRAFFIC ON THE SOUTHBOUND SECTION OF EGAN DRIVE.
4. TWO LANE TRAFFIC SOUTHBOUND SHALL BE MAINTAINED AT ALL TIMES DURING NON-WORKING HOURS AS WELL AS WITHIN NON-WORK AREAS DURING WORKING HOURS.
5. DOUBLE TRAFFIC FINES SIGNS SHALL BE USED AS DIRECTED BY THE ENGINEER AND PER STANDARD DRAWING C-04.12.
6. AS MUCH AS POSSIBLE, THE CONTRACTOR SHALL STAGE HIS WORK FROM THE SHOULDER OF THE ROAD. THE SINGLE LANE CLOSURE SHALL ONLY BE USED IF ABSOLUTELY NECESSARY AND ONLY WITH THE WRITTEN AUTHORIZATION OF THE ENGINEER.



**TYPICAL SINGLE LANE CLOSURE
TWO LANE ONE WAY ROAD**



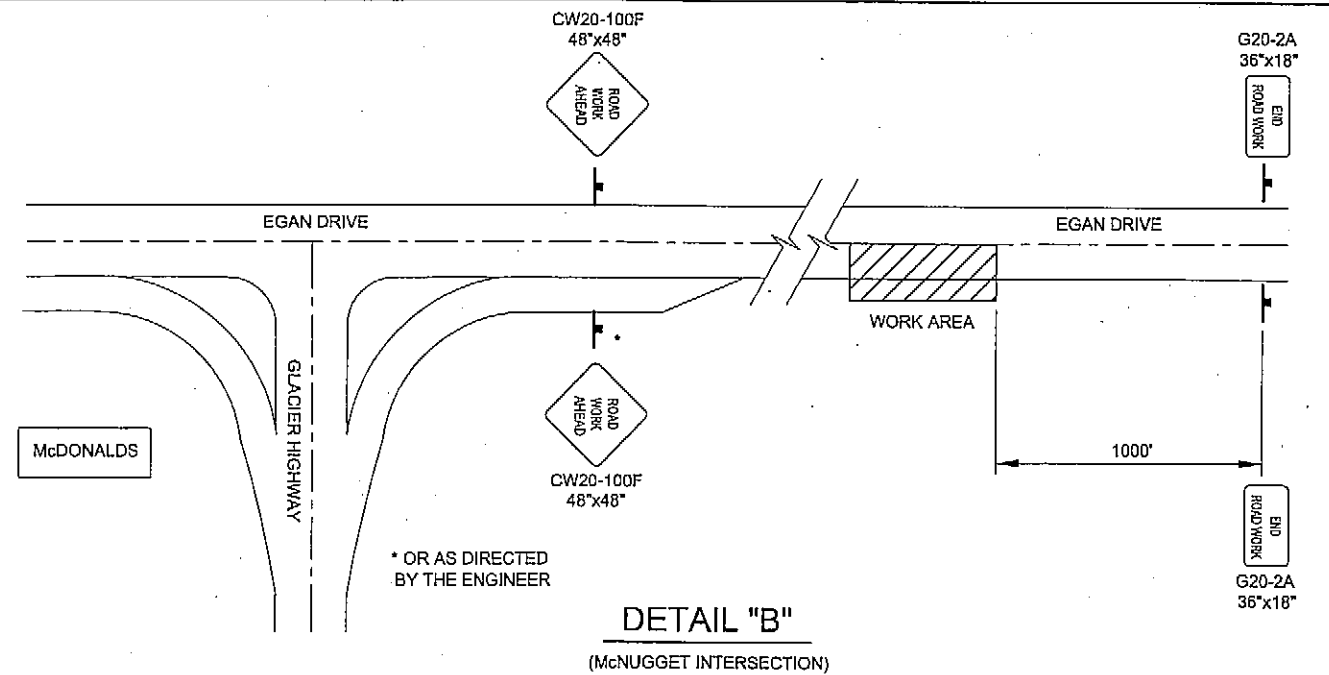
SHOULDER WORK

LEGEND

- SIGN
- CONE
- DRUM
- TYPE III BARRICADE

$L = WS$ (45 MPH OR >)
 $L = \frac{WS}{60}$ (40 MPH OR <)
 WHERE:
 L = LENGTH OF TAPER (FT)
 W = WIDTH OF OFFSET (FT)
 S = SPEED (MPH)

TCP TABLE SETUP		
SPEED (MILES PER HOUR)	BUFFER/ LENGTH (ft)	CONE/DRUM SPACING (ft)
25	155	25
30	200	30
35	250	35
40	305	40
45	360	45
50	425	50
55	495	55
60	570	60



**DETAIL "B"
(McNUGGET INTERSECTION)**

DO NOT SCALE FROM THESE DRAWINGS USE DIMENSIONS

CHECKED BY: R. PURVES DESIGNED BY: K. MATTSON DRAWN BY: D. STEVENS PATH: Q:\Jnu\68722\Plans\T.CP.dwg TAB: B1 Mon, 28 Nov 05 09:44AM	STATE OF ALASKA DEPARTMENT OF TRANSPORTATION & PUBLIC FACILITIES S.E. REGION DESIGN & ENGINEERING SERVICES DIVISION JNU-EGAN DRIVE GUARDRAIL AT YANDUKIN DRIVE (Rebid) PROJECT NO. 68722 TRAFFIC CONTROL PLAN																	
<table border="1" style="width: 100%; border-collapse: collapse;"> <thead> <tr> <th colspan="3">REVISIONS</th> <th rowspan="2">PROJECT DESIGNATION</th> <th rowspan="2">YEAR</th> <th rowspan="2">SHEET NO.</th> <th rowspan="2">TOTAL SHEETS</th> </tr> <tr> <th>NO.</th> <th>DATE</th> <th>DESCRIPTION</th> </tr> </thead> <tbody> <tr> <td> </td> <td> </td> <td> </td> <td>ACHHE-093-2(44)68722</td> <td>2005</td> <td>S1</td> <td>4</td> </tr> </tbody> </table>		REVISIONS			PROJECT DESIGNATION	YEAR	SHEET NO.	TOTAL SHEETS	NO.	DATE	DESCRIPTION				ACHHE-093-2(44)68722	2005	S1	4
REVISIONS			PROJECT DESIGNATION	YEAR					SHEET NO.	TOTAL SHEETS								
NO.	DATE	DESCRIPTION																
			ACHHE-093-2(44)68722	2005	S1	4												