

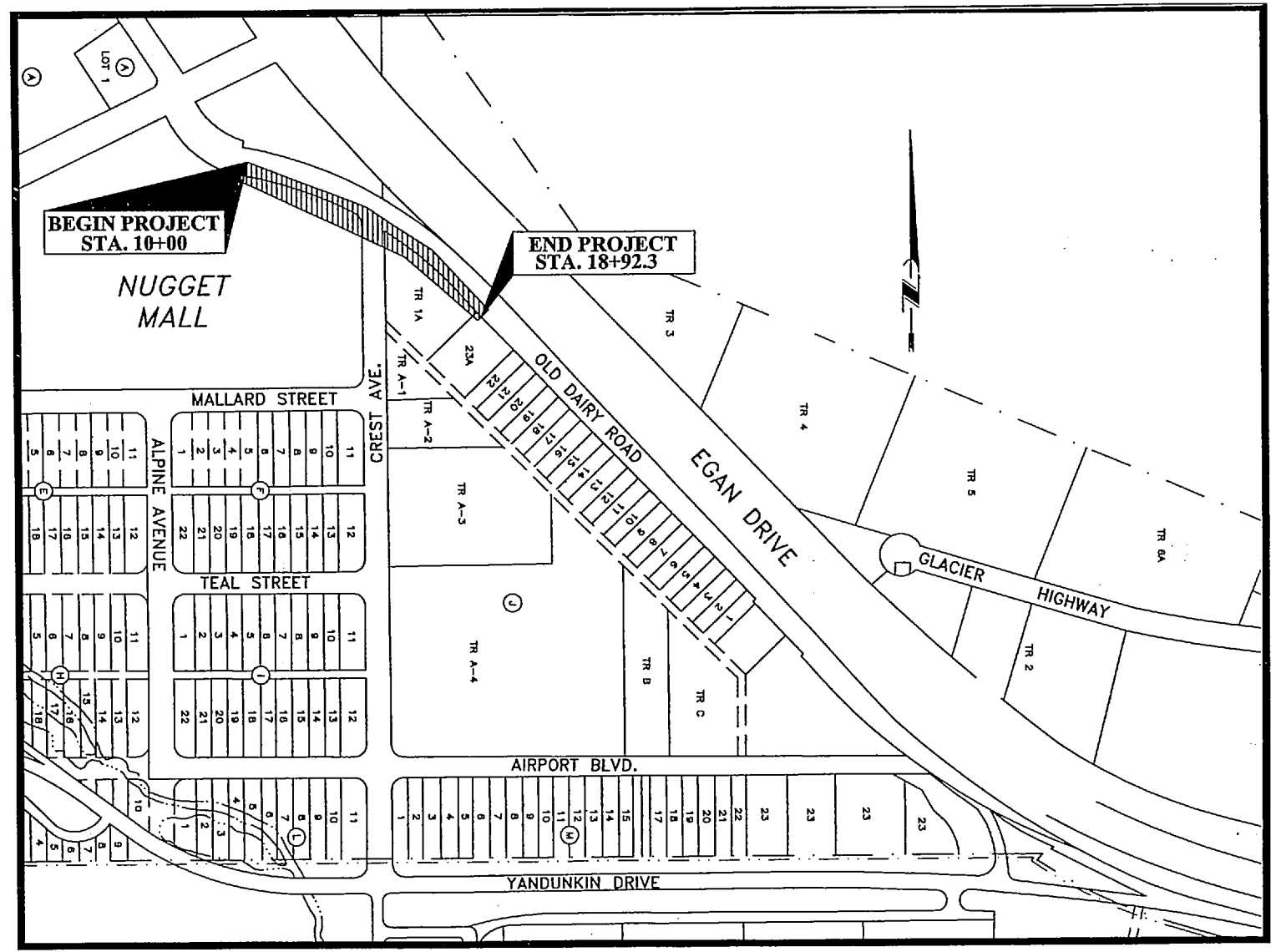
R & M ENGINEERING, INC.
 ENGINEERS GEOLOGISTS SURVEYORS
 6205 GLACIER HIGHWAY JUNEAU, ALASKA 99803
 (907) 780-6060 FAX: (907) 780-4611

STATE OF ALASKA DEPARTMENT OF TRANSPORTATION AND PUBLIC FACILITIES
 - SOUTHEAST REGION -

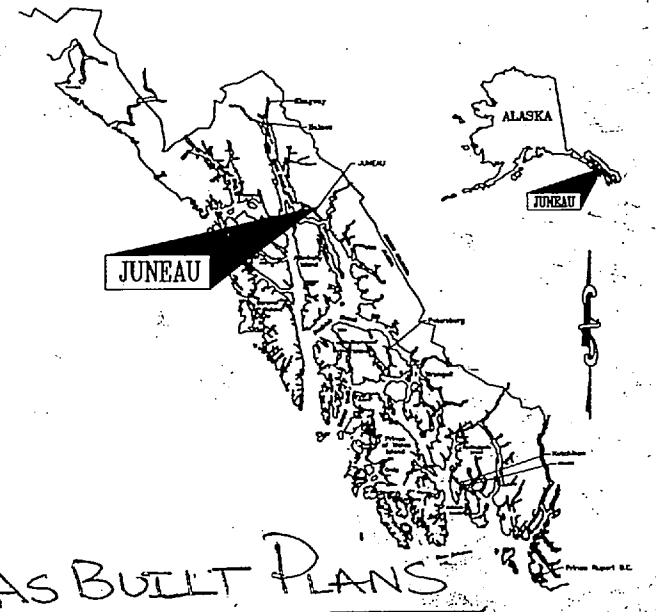
JNU - OLD DAIRY ROAD SHOULDER WIDENING

Project No. 68516 / MGS-MGL-0956(30)

INDEX OF SHEETS	
SHEET NO.	DESCRIPTION
1	COVER SHEET
2	ESTIMATE OF QUANTITIES
3	TYPICAL SECTIONS
4	PLAN & PROFILE STA. 10+00 TO STA. 12+50
5	PLAN & PROFILE STA. 12+50 TO STA. 15+25
6	PLAN & PROFILE STA. 15+25 TO STA. 18+00
7	PLAN & PROFILE STA. 18+00 TO STA. 18+92.3
8	TRAFFIC CONTROL PLAN
9	EROSION AND SEDIMENT CONTROL PLAN



PROJECT LOCATION MAP
 N.T.S.



AS BUILT PLANS
 SOUTHEAST ALASKA REGION
 ARETE CONSTRUCTION
 TINA BERGAM, PROJ ENGR
 3/31/05 - 5/31/05

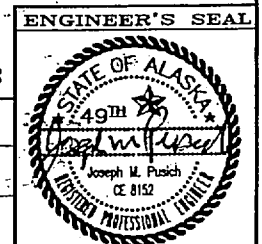
THE FOLLOWING STANDARD DRAWINGS
 APPLY TO THIS PROJECT

- | | | |
|---------|---------|---------|
| A-1 | D-23.01 | I-20.13 |
| C-04.12 | D-24.00 | I-21.01 |
| D-20.03 | D-26.02 | I-22.01 |
| D-22.01 | D-30.01 | |

STATE OF ALASKA
 DEPARTMENT OF TRANSPORTATION
 AND
 PUBLIC FACILITIES
 SOUTHEAST REGION

APPROVED *[Signature]* Date 10/28/04
 Patrick J. Kemp, P.E.
 Regional Preconstruction Engineer

APPROVED *[Signature]* Date 10/28/04
 Gary Paxton
 Regional S.E. Director



NOTE: DO NOT SCALE FROM THESE PLANS-USE DIMENSIONS

BY:	DATE:	DESCRIPTION OF CHANGE:

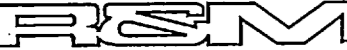
RECORD OF REVISIONS

STATE OF ALASKA
 DEPARTMENT OF TRANSPORTATION
 AND PUBLIC FACILITIES
 SOUTHEAST REGION DESIGN & CONSTRUCTION

JNU - OLD DAIRY ROAD SHOULDER WIDENING
 COVER SHEET

DESIGNED BY: J.L.G.	PROJECT NO. 68516/MGS-MGL-0956(30)
DRAWN BY: J.L.G.	DATE: 2004
CHECKED BY: J.M.P.	SHEET 1 OF 9

C:\pva\8516\Plan\A\01-COVER.dwg PLOT: July 05, 2004 at 2:06pm



R & M ENGINEERING, INC.
 ENGINEERS GEOLOGISTS SURVEYORS
 6205 GLACIER HIGHWAY JUNEAU, ALASKA 99803
 (907) 780-6060 FAX. (907) 780-4611

ESTIMATE OF QUANTITIES

ITEM NO.	PAY ITEM	UNIT	QUANTITY
202 (1)	REMOVAL OF STRUCTURES & OBSTRUCTIONS	Lump Sum	ALL REQ'D
202 (2)	REMOVAL OF PAVEMENT	Lump Sum	ALL REQ'D
203 (6)	BORROW	Ton	460
301 (1)	AGGREGATE BASE COURSE, GRADING D-1	Ton	170
401 (1)	ASPHALT CEMENT, TYPE II, CLASS B	Lump Sum	ALL REQ'D
401 (2)	ASPHALT CEMENT GRADE PG 58-22	Lump Sum	ALL REQ'D
603 (21)	12 INCH CORRUGATED POLYETHYLENE PIPE	Linear Foot	906
604 (1)	STORM SEWER MANHOLE	Each	5
604 (5a)	INLET, TYPE A	Each	2
604 (5b)	INLET, TYPE B	Each	5
604 (8)	MANHOLE OIL/WATER SEPARATOR	Each	1
608 (1a)	CONCRETE SIDEWALK, 4-INCHES THICK	Square Yard	408
609 (2)	CURB & GUTTER, TYPE I	Linear Foot	780
615 (2)	REMOVE & RELOCATE EXISTING SIGN	Each	2
621 (5)	REMOVE & REPLACE EXISTING LANDSCAPING	Lump Sum	ALL REQ'D
627 (6)	FIRE HYDRANT RELOCATION	Each	1
627 (10)	ADJUSTMENT OF VALVE BOX	Each	1
633 (1)	SILT FENCE	Linear Foot	370
633 (2)	CHESK-DAM	Each	1
633 (3)	INLET SEDIMENT TRAP	Each	2
635 (1)	INSULATION BOARD	MBM	0.3
640 (1)	MOBILIZATION AND DEMOBILIZATION	Lump Sum	ALL REQ'D
641 (1)	EROSION & POLLUTION CONTROL ADMINISTRATION	Lump Sum	ALL REQ'D
641 (2)	EROSION & POLLUTION CONTROL	Conting. Sum	ALL REQ'D
642 (1)	CONSTRUCTION SURVEYING	Lump Sum	ALL REQ'D
643 (2)	TRAFFIC MAINTENANCE	Lump Sum	ALL REQ'D
643 (3)	PERMANENT CONSTRUCTION SIGNING	Lump Sum	ALL REQ'D
643 (15)	FLAGGING	Contingent Sum	ALL REQ'D
670 (1)	PAINTED TRAFFIC MARKINGS	Lump Sum	ALL REQ'D

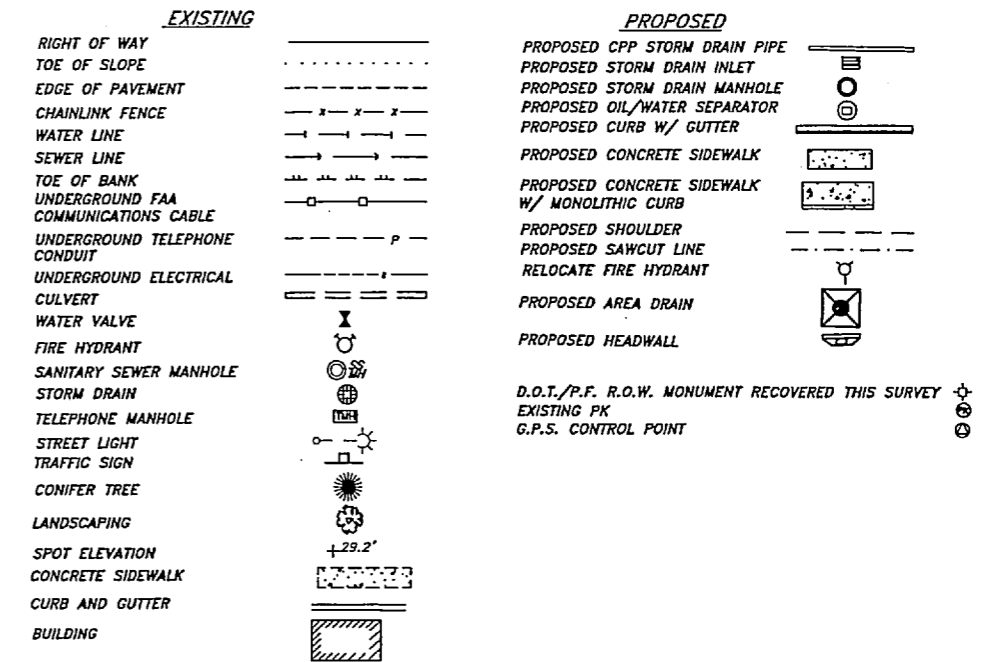
BASIS OF ESTIMATE

ITEM NO.	PAY ITEM	ESTIMATING FACTOR
202 (2)	REMOVAL OF PAVEMENT	700 SY
202 (4)	REMOVAL OF CULVERT PIPE	112 LF
203 (6)	BORROW, TYPE A	1.81 TONS/CY
301 (1)	AGGREGATE BASE COURSE	2.0 TONS/CY
401 (1)	ASPHALT CEMENT, TYPE II, CLASS B	30 TONS @ 120 LB/YD ² -IN
401 (2)	ASPHALT CEMENT @ 6% OF ITEM 401 (1)	1.8 TONS
609 (2)	Curb and Gutter, Type I	754 LF of Standard Curb & Gutter Type I 26 LF of Monolithic Curb
	SEEDING	0.12 ACRE
	TOPSOIL	600 SY

CULVERT REMOVAL SUMMARY

LOCATION	LENGTH
STA 11+15, 25' RT	14'
STA 13+71-STA 13+81, 23' RT	10'
STA 15+07-STA 15+59, 50' RT	88'
TOTAL LENGTH OF CULVERT REMOVAL	112'

SYMBOLS



Project As-Built Drawings have been reviewed by the Project Engineer and represent to the best of my knowledge, the project as constructed.
 PE *Jim Bergan* Date *2/16/04*

NOTE: DO NOT SCALE FROM THESE PLANS-USE DIMENSIONS

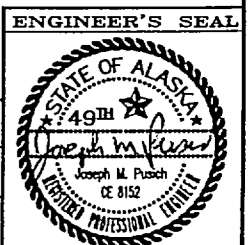
BY:	DATE:	DESCRIPTION OF CHANGE:

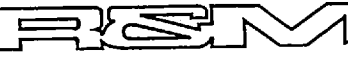
RECORD OF REVISIONS

STATE OF ALASKA
 DEPARTMENT OF TRANSPORTATION
 AND PUBLIC FACILITIES
 SOUTHEAST REGION DESIGN & CONSTRUCTION

JNU - OLD DAIRY ROAD SHOULDER WIDENING
 ESTIMATE OF QUANTITIES

DESIGNED BY: J.L.G.	PROJECT NO. 68516/MGS-MGL-0956(30)
DRAWN BY: J.L.G.	DATE: 2004
CHECKED BY: J.M.P.	SHEET 2 OF 9



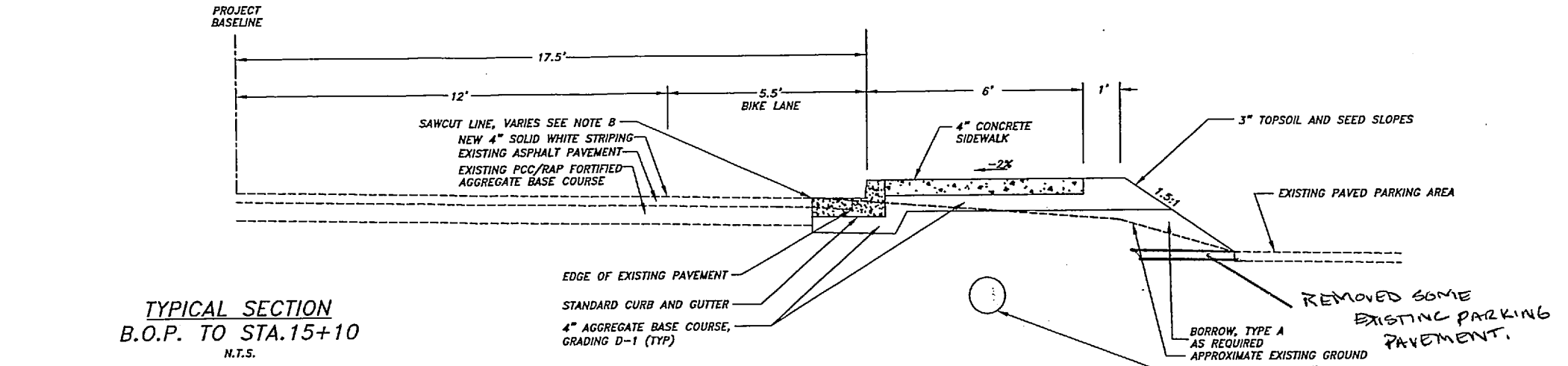


R & M ENGINEERING, INC.
ENGINEERS GEOLOGISTS SURVEYORS
6205 GLACIER HIGHWAY JUNEAU, ALASKA 99803
(907) 780-6060 FAX. (907) 780-4611

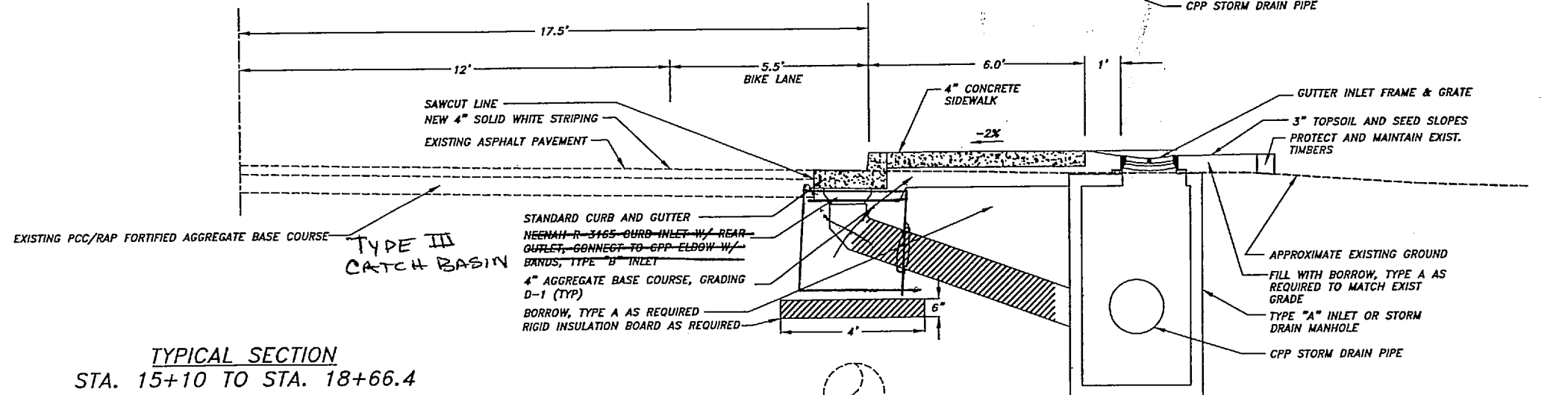
TYPICAL SECTION NOTES:

- 1) ASPHALT AND CONCRETE SIDEWALK CROSS SLOPES SHALL BE 2%.
- 2) AFTER EXISTING ASPHALT PAVEMENT IS REMOVED CONTRACTOR SHALL PROOF ROLL EXISTING BASE MATERIALS TO 95% COMPACTION.
- 3) TOPSOIL AND SEED ALL NEW SLOPES AND DISTURBED AREAS. TOPSOIL SHALL BE PLACED WITH A MINIMUM DEPTH OF 3". EXISTING TOPSOIL MAY BE STRIPPED AND REUSED WHEN PRESENT. DO NOT PLACE TOPSOIL ON SIDEWALK SHOULDERS.
- 4) ALL SAWCUT JOINTS SHALL BE SEALED WITH A HOT LIQUID ASPHALT JOINT SEALER.
- 5) TYPICAL SECTION VIEWS SHOWN LOOKING AHEAD IN STATIONING.
- 6) RIGID INSULATION BOARD SHALL BE PLACED UNDER ALL STORM DRAIN PIPE AND STRUCTURES WHICH CROSS THE WATER MAIN AS SHOWN ON THE PLANS.
- 7) ALL NEW DRIVEWAY APPROACHES SHALL BE REGRADED AS NECESSARY TO DRAIN TO CATCH BASIN OR DRAINAGE DITCH.
- 8) SAWCUT LINE FROM STA. 12+69.7 TO 14+99.4 IS 1' FROM FACE OF NEW GUTTER PAN (15' RIGHT OF PROJECT BASELINE).

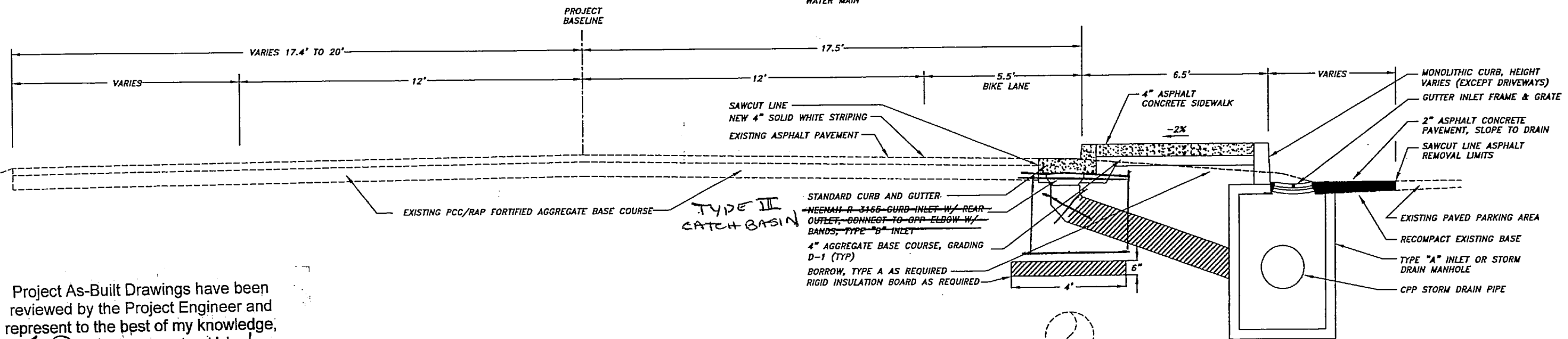
**TYPICAL SECTION
B.O.P. TO STA.15+10**
N.T.S.



**TYPICAL SECTION
STA. 15+10 TO STA. 18+66.4**
N.T.S.



**TYPICAL SECTION AT PAVED PARKING AREAS
STA. 18+66.4 TO E.O.P.**
N.T.S.



Project As-Built Drawings have been reviewed by the Project Engineer and represent to the best of my knowledge, the project as constructed.
PE *J. Berger* Date 9/15/04

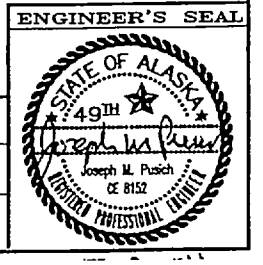
NOTE: DO NOT SCALE FROM THESE PLANS-USE DIMENSIONS

BY:	DATE:	DESCRIPTION OF CHANGE:

STATE OF ALASKA
DEPARTMENT OF TRANSPORTATION
AND PUBLIC FACILITIES
SOUTHEAST REGION DESIGN & CONSTRUCTION

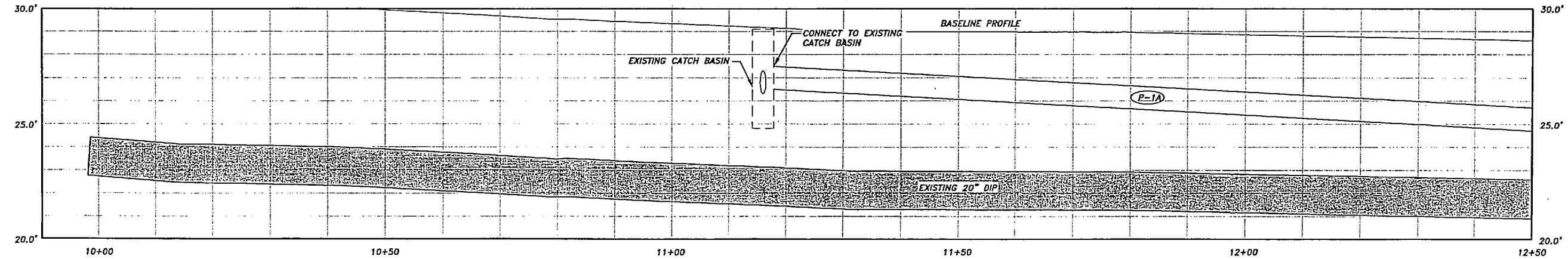
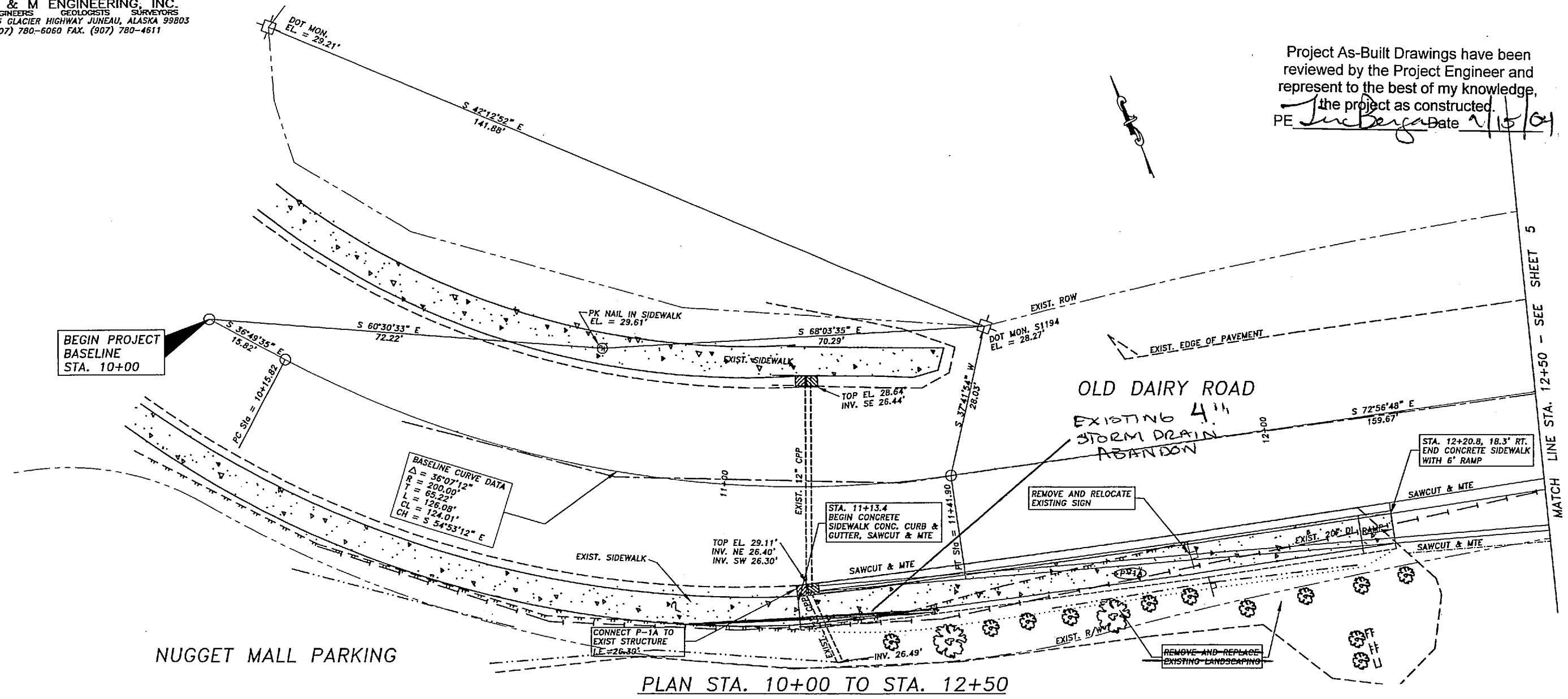
JNU - OLD DAIRY ROAD SHOULDER WIDENING
TYPICAL SECTIONS

DESIGNED BY:	J.L.G.	PROJECT NO.	68516/MGS-MGL-0956(30)
DRAWN BY:	J.L.G.	DATE:	2004
CHECKED BY:	J.M.P.	SHEET	3 OF 9



G:\jnu\68516\Plan\03-TYP SECTION.dwg PLOT: July 08, 2004 at: 2:05pm

Project As-Built Drawings have been reviewed by the Project Engineer and represent to the best of my knowledge, the project as constructed.
 PE *Tim Berg* Date *2/15/04*



PROFILE STA. 10+00 TO STA. 12+50
 SCALE: HORIZ. 1"=20' (11x17)
 VERT. 1"=5' (11x17)
 GRAPHIC SCALE

NOTE: DO NOT SCALE FROM THESE PLANS—USE DIMENSIONS

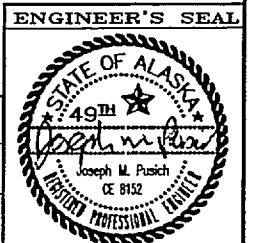
BY:	DATE:	DESCRIPTION OF CHANGE:

RECORD OF REVISIONS

STATE OF ALASKA
 DEPARTMENT OF TRANSPORTATION
 AND PUBLIC FACILITIES
 SOUTHEAST REGION DESIGN & CONSTRUCTION

JNU - OLD DAIRY ROAD SHOULDER WIDENING
 PLAN & PROFILE STA. 10+00 TO STA. 12+50

DESIGNED BY: J.L.G.	PROJECT NO. 68516/MGS-MGL-0956(30)
DRAWN BY: J.L.G.	DATE: 2004
CHECKED BY: J.M.P.	SHEET 4 OF 9

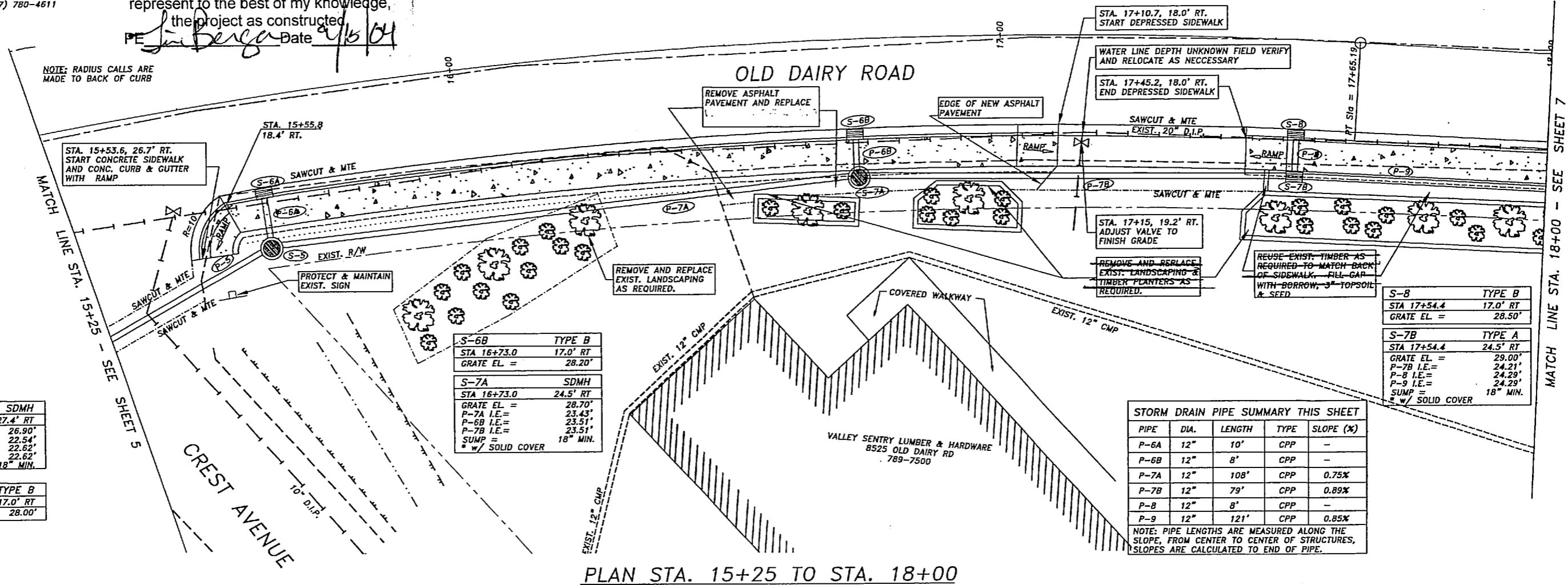


C:\Jnu\68516\Plan\04e11-PLAN\PROFILE.dwg PLOT: July 08, 2004 at: 2:07pm

R & M ENGINEERING, INC.
 ENGINEERS GEOLGISTS SURVEYORS
 6205 GLACIER HIGHWAY JUNEAU, ALASKA 99803
 (907) 780-6060 FAX. (907) 780-4611

Project As-Built Drawings have been reviewed by the Project Engineer and represent to the best of my knowledge, the project as constructed.
 PE *Suberg* Date *2/15/04*

NOTE: RADIUS CALLS ARE MADE TO BACK OF CURB



S-5	SDMH
STA 15+63	27.4' RT
GRATE EL =	26.90'
P-5 I.E. =	22.54'
P-6 I.E. =	22.62'
P-7 I.E. =	22.62'
SUMP =	18" MIN.

S-6A	TYPE B
STA 15+63	17.0' RT
GRATE EL =	28.00'

S-6B	TYPE B
STA 16+73.0	17.0' RT
GRATE EL =	28.20'

S-7A	SDMH
STA 16+73.0	24.5' RT
GRATE EL =	28.70'
P-7A I.E. =	23.43'
P-6B I.E. =	23.51'
P-7B I.E. =	23.51'
SUMP =	18" MIN.
* w/ SOLID COVER	

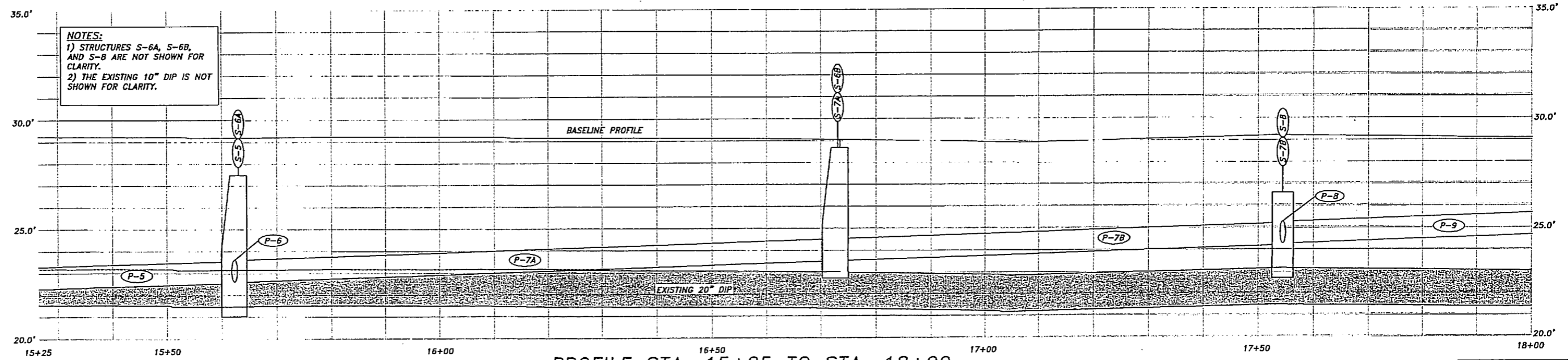
S-8	TYPE B
STA 17+54.4	17.0' RT
GRATE EL =	28.50'

S-7B	TYPE A
STA 17+54.4	24.5' RT
GRATE EL =	29.00'
P-7B I.E. =	24.21'
P-8 I.E. =	24.29'
P-9 I.E. =	24.29'
SUMP =	18" MIN.
* w/ SOLID COVER	

STORM DRAIN PIPE SUMMARY THIS SHEET				
PIPE	DIA.	LENGTH	TYPE	SLOPE (%)
P-6A	12"	10'	CPP	-
P-6B	12"	8'	CPP	-
P-7A	12"	108'	CPP	0.75%
P-7B	12"	79'	CPP	0.89%
P-8	12"	8'	CPP	-
P-9	12"	121'	CPP	0.85%

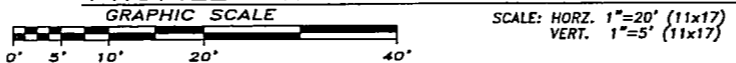
NOTE: PIPE LENGTHS ARE MEASURED ALONG THE SLOPE, FROM CENTER TO CENTER OF STRUCTURES, SLOPES ARE CALCULATED TO END OF PIPE.

PLAN STA. 15+25 TO STA. 18+00



NOTES:
 1) STRUCTURES S-6A, S-6B, AND S-8 ARE NOT SHOWN FOR CLARITY.
 2) THE EXISTING 10" DIP IS NOT SHOWN FOR CLARITY.

PROFILE STA. 15+25 TO STA. 18+00



NOTE: DO NOT SCALE FROM THESE PLANS-USE DIMENSIONS

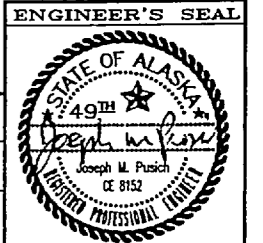
BY:	DATE:	DESCRIPTION OF CHANGE:

RECORD OF REVISIONS

STATE OF ALASKA
 DEPARTMENT OF TRANSPORTATION
 AND PUBLIC FACILITIES
 SOUTHEAST REGION DESIGN & CONSTRUCTION

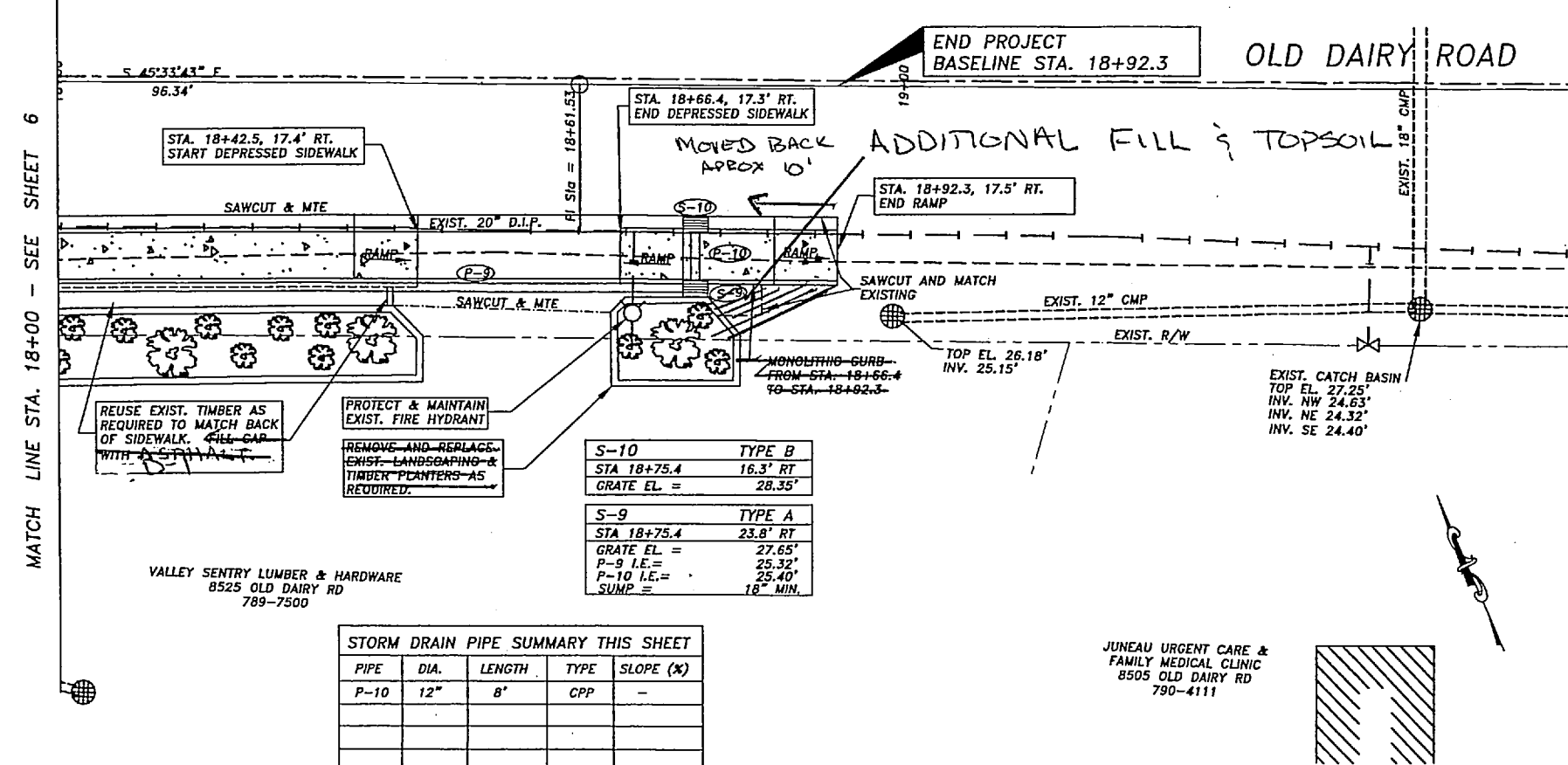
JNU - OLD DAIRY ROAD SHOULDER WIDENING
 PLAN & PROFILE STA. 15+25 TO STA. 18+00

DESIGNED BY:	J.L.G.	PROJECT NO.	68516MGS-MGL-0956(30)
DRAWN BY:	J.L.G.	DATE:	2004
CHECKED BY:	J.M.P.	SHEET	6 OF 9



G:\Jnu\68516\Profile\04011-PLAN&PROFILE.dwg PLOT: July 08, 2004 at 2:07pm

R & M ENGINEERING, INC.
ENGINEERS GEOLGISTS SURVEYORS
6205 GLACIER HIGHWAY JUNEAU, ALASKA 99803
(907) 780-6060 FAX. (907) 780-4611



S-10	TYPE B
STA 18+75.4	16.3' RT
GRATE EL. =	28.35'
S-9	TYPE A
STA 18+75.4	23.8' RT
GRATE EL. =	27.65'
P-9 I.E. =	25.32'
P-10 I.E. =	25.40'
SUMP =	18" MIN.

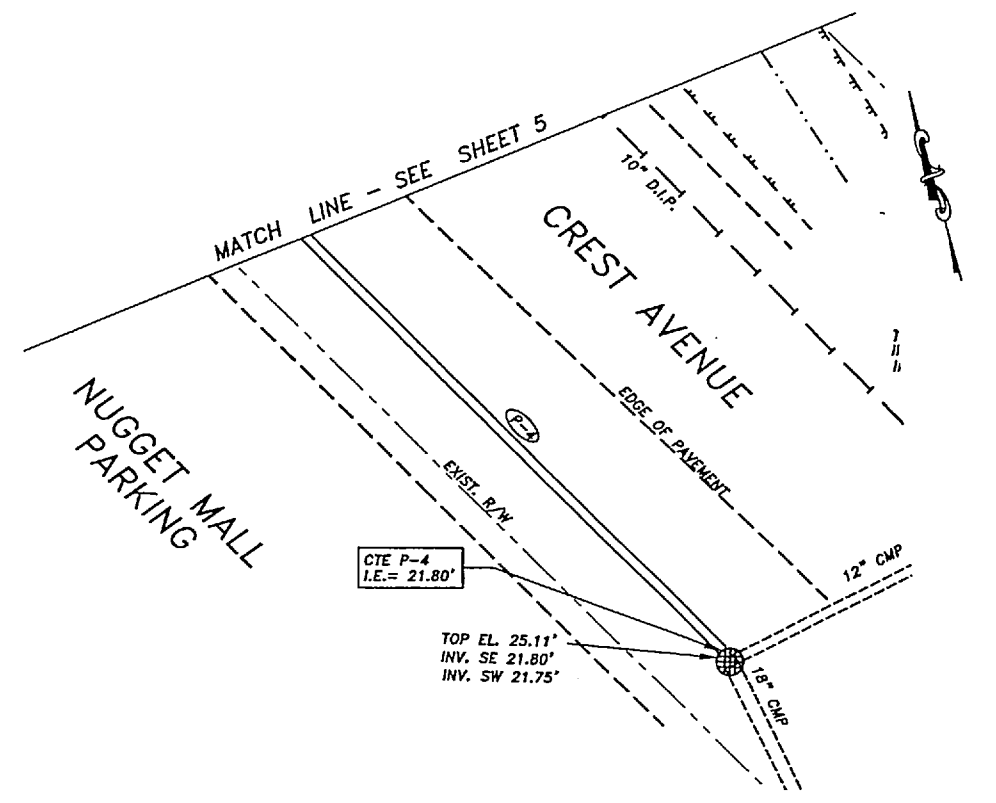
STORM DRAIN PIPE SUMMARY THIS SHEET

PIPE	DIA.	LENGTH	TYPE	SLOPE (X)
P-10	12"	8'	CPP	-

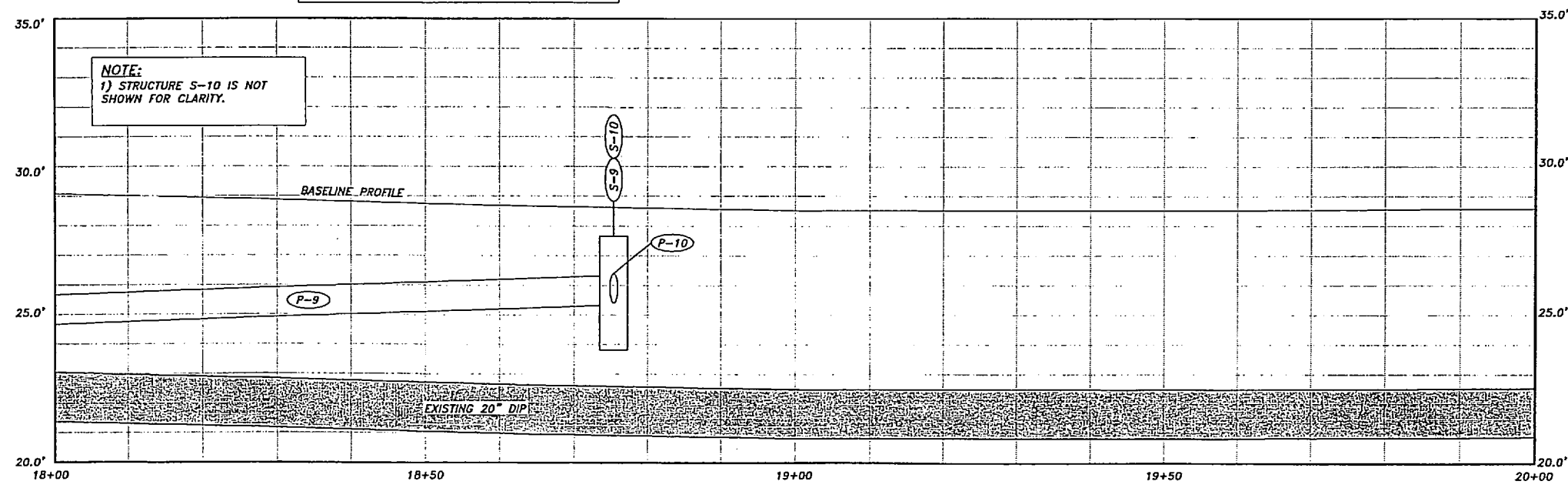
NOTE: PIPE LENGTHS ARE MEASURED ALONG THE SLOPE, FROM CENTER TO CENTER OF STRUCTURES, SLOPES ARE CALCULATED TO END OF PIPE.

JUNEAU URGENT CARE & FAMILY MEDICAL CLINIC
8505 OLD DAIRY RD
790-4111

PLAN STA. 18+00 TO STA. 20+80

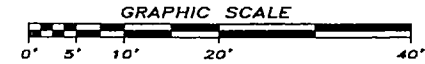


PLAN CREST AVENUE



PROFILE STA. 18+00 TO STA. 20+00

SCALE: HORZ. 1"=20' (11x17)
VERT. 1"=5' (11x17)



Project As-Built Drawings have been reviewed by the Project Engineer and represent to the best of my knowledge, the project as constructed.
PE *[Signature]* Date 9/15/04

NOTE: DO NOT SCALE FROM THESE PLANS-USE DIMENSIONS

RECORD OF REVISIONS

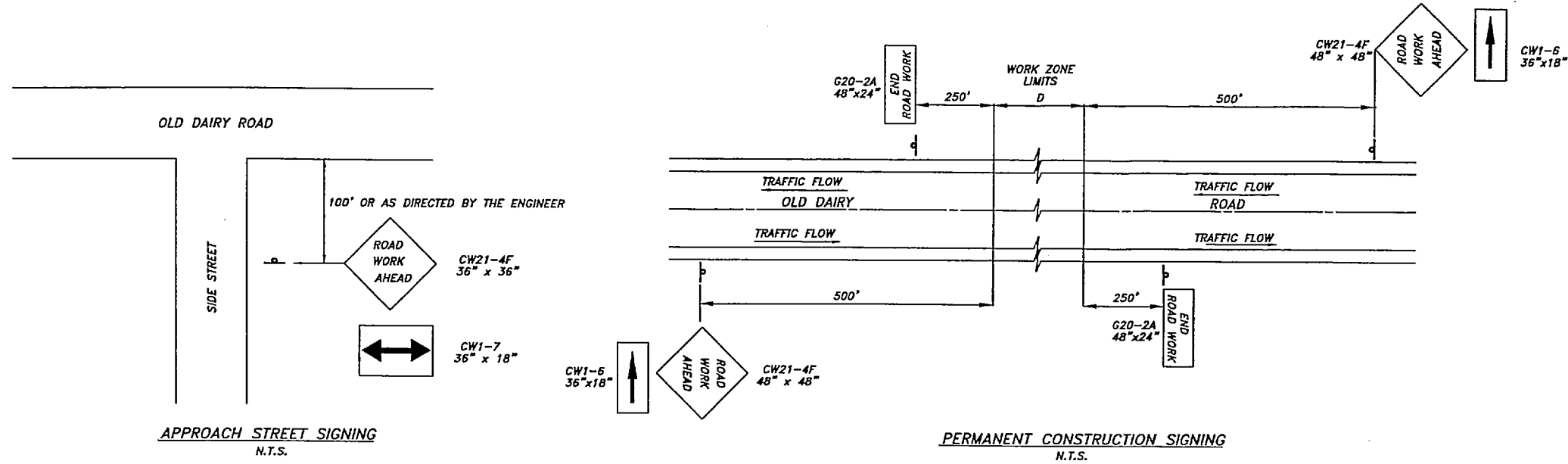
BY:	DATE:	DESCRIPTION OF CHANGE:

STATE OF ALASKA
DEPARTMENT OF TRANSPORTATION
AND PUBLIC FACILITIES
SOUTHEAST REGION DESIGN & CONSTRUCTION

JNU - OLD DAIRY ROAD SHOULDER WIDENING
PLAN & PROFILE STA. 18+00 TO STA. 20+80

DESIGNED BY: J.L.G.	PROJECT NO. 68516/MGS-MGL-0956(30)
DRAWN BY: J.L.G.	DATE: 2004
CHECKED BY: J.M.P.	SHEET 7 OF 9



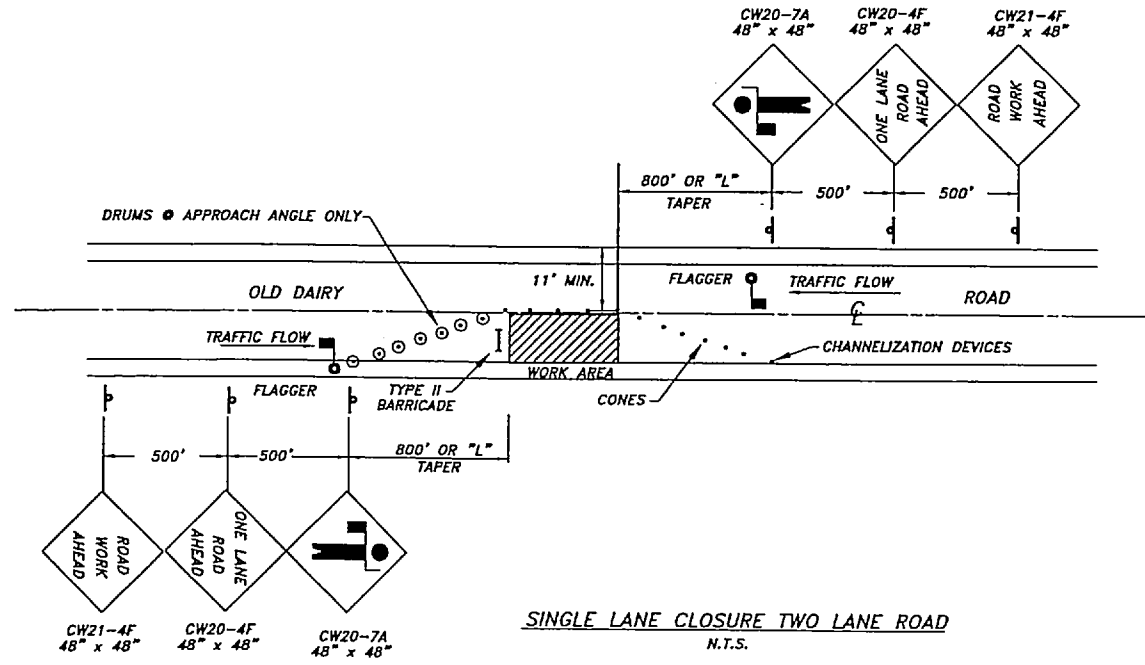
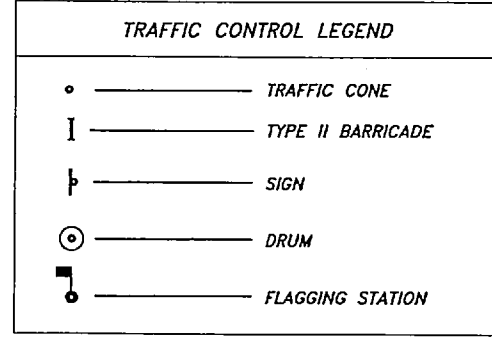


APPROACH STREET SIGNING
N.T.S.

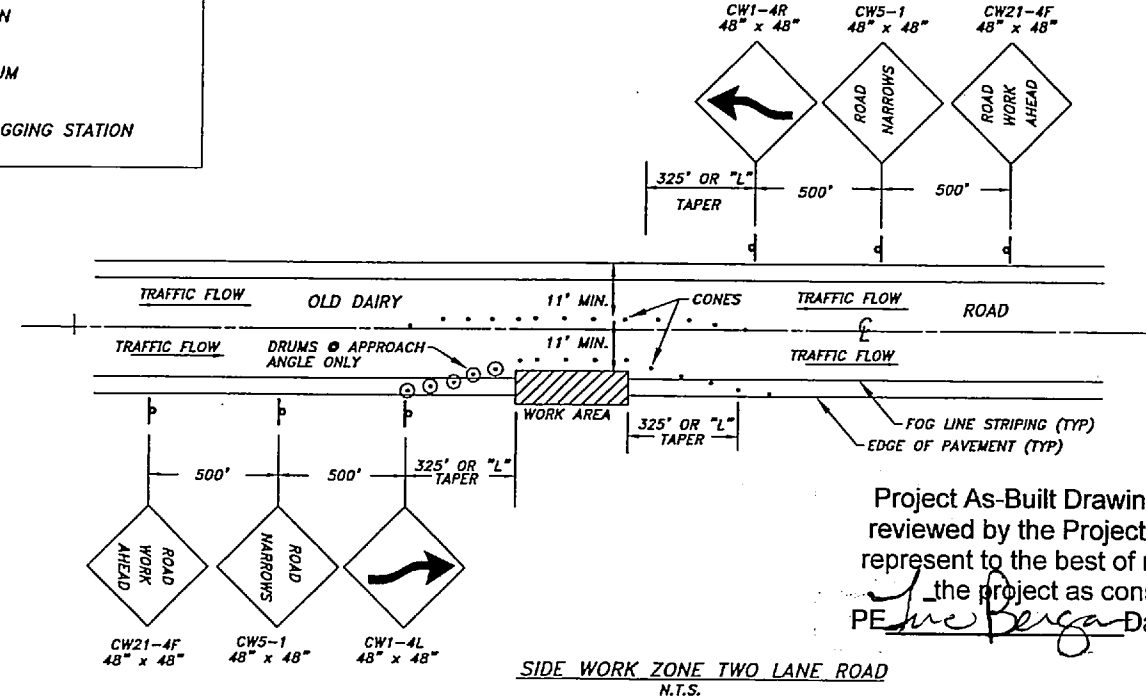
PERMANENT CONSTRUCTION SIGNING
N.T.S.

- TRAFFIC CONTROL NOTES**
- TAPER LENGTHS SHALL BE AS SHOWN FOR THE GIVEN OFFSETS. IF DIFFERENT OFFSETS ARE USED TAPER LENGTHS SHALL BE COMPUTED USING THE FOLLOWING FORMULA:

$$L = S \times W$$
 WHERE: L = MINIMUM LENGTH OF TAPER IN FEET
 S = POSTED SPEED LIMIT
 W = WIDTH OF OFFSET
 - ALL TRAFFIC CONTROL ELEMENTS SHALL BE MAINTAINED 24 HOURS A DAY.
 - ALL CONSTRUCTION SIGNING SHALL REMAIN IN PLACE UNTIL THE CONDITIONS IN WHICH THEY DELINEATE NO LONGER EXIST.
 - THE CONTRACTOR SHALL CONDUCT OPERATIONS TO MINIMIZE INTERFERENCE WITH TRAFFIC ON OLD DAIRY ROAD.
 - THE CONTRACTOR SHALL PROVIDE VEHICULAR ACCESS THROUGH THE WORK ZONES ALONG OLD DAIRY ROAD AT ALL TIMES.
 - TEMPORARY PAVEMENT TRANSITIONS SHALL BE CONSTRUCTED AT ALL VERTICAL DROPS OF 1-1/2" OR GREATER IN THE TRAVEL LANE.
 - TRAFFIC CONES SHALL BE 28" HIGH AND SPACED AS PER MANUAL ON UNIFORM TRAFFIC CONTROL DEVICES, BUT NOT MORE THAN A 50' SPACING.
 - ALL PERMANENT CONSTRUCTION SIGNING SHALL BE POST MOUNTED.
 - DRIVING LANES THROUGH WORK AREAS SHALL BE A MINIMUM WIDTH OF 11'.
 - TWO-LANE TWO WAY TRAFFIC SHALL BE MAINTAINED AT ALL TIMES DURING NONWORKING HOURS.
 - FLOOD LIGHTS SHALL BE PROVIDED FOR FLAGGER STATIONS DURING NIGHT OPERATIONS.
 - CHANNELIZATION DEVICES IF USED AT NIGHT SHALL BE LIT IN ACCORDANCE WITH THE ALASKA TRAFFIC MANUAL.
 - OLD DAIRY ROAD SHALL BE KEPT OPEN WITH TWO-LANES OF TWO-WAY TRAFFIC BETWEEN 7:00 AM AND 8:30 AM AND BETWEEN 3:30 PM AND 5:00 PM.



SINGLE LANE CLOSURE TWO LANE ROAD
N.T.S.



SIDE WORK ZONE TWO LANE ROAD
N.T.S.

Project As-Built Drawings have been reviewed by the Project Engineer and represent to the best of my knowledge, the project as constructed.
 PE *Joe Bergan* Date *9/15/04*

TYPICAL WORK ZONE TRAFFIC CONTROL

NOTE: DO NOT SCALE FROM THESE PLANS—USE DIMENSIONS

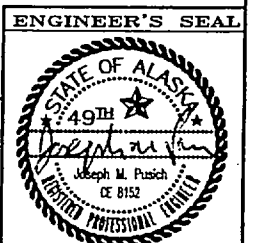
BY:	DATE:	DESCRIPTION OF CHANGE:

RECORD OF REVISIONS

STATE OF ALASKA
 DEPARTMENT OF TRANSPORTATION
 AND PUBLIC FACILITIES
 SOUTHEAST REGION DESIGN & CONSTRUCTION

JNU - OLD DAIRY ROAD SHOULDER WIDENING
 TRAFFIC CONTROL PLAN

DESIGNED BY:	J.L.G.	PROJECT NO.	68516/MGS-MGL-0956(30)
DRAWN BY:	J.L.G.	DATE:	2004
CHECKED BY:	J.M.P.	SHEET	8 OF 9

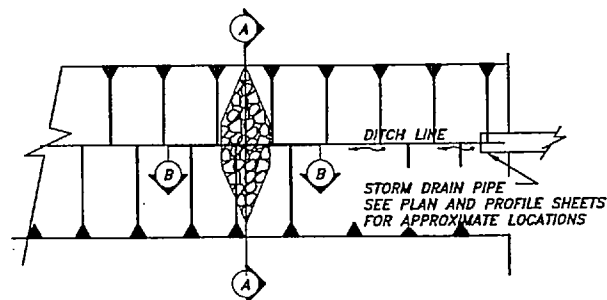


03:\work\68516\12-TYPICAL WORK ZONE.dwg PLOT: July 08, 2004 at 2:07pm

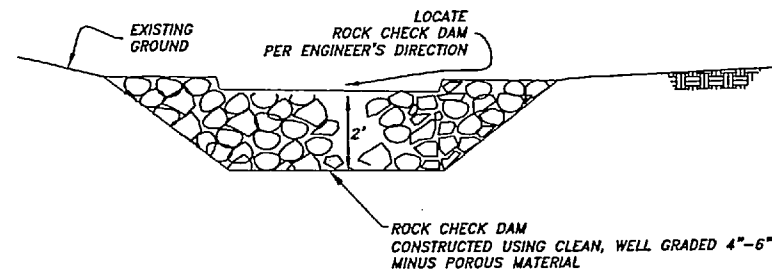
R & M ENGINEERING, INC.
 ENGINEERS GEOLOGISTS SURVEYORS
 6205 GLACIER HIGHWAY JUNEAU, ALASKA 99803
 (907) 780-6060 FAX. (907) 780-4611

NOTES:

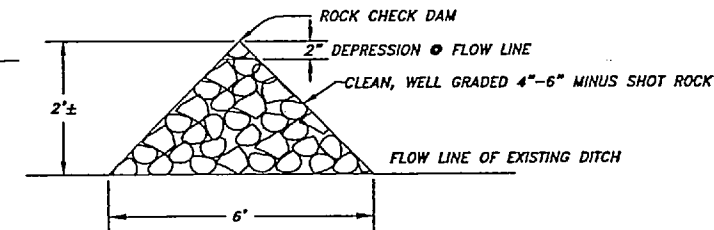
- 1) MAINTENANCE OF ROCK CHECK DAMS SHALL INCLUDE BAILING WHEN HALF FULL.
- 2) SIMILAR DETAILS FOR OTHER ROCK CHECK DAM LOCATIONS.
- 3) GENERAL LOCATION OF ROCK CHECK DAMS SHOWN ON PLAN SHEETS. ACTUAL LOCATIONS TO BE FIELD DETERMINED BY ENGINEER.



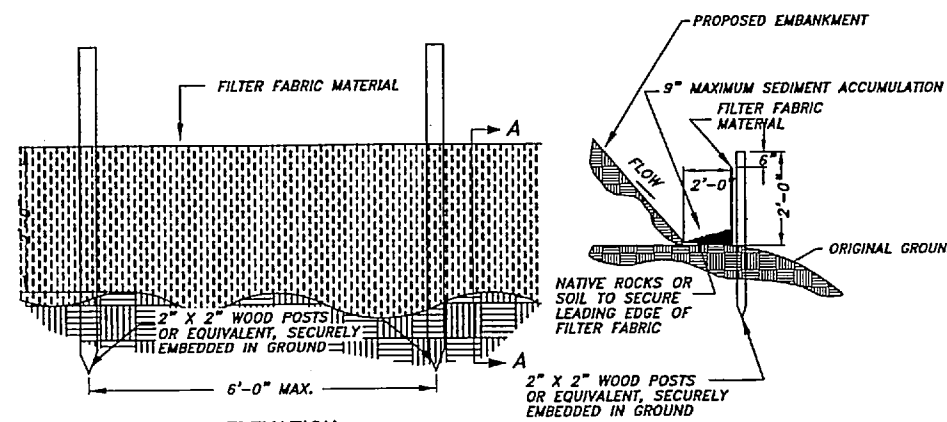
1 OLD DAIRY ROAD ROCK CHECK DAM
 N.T.S.



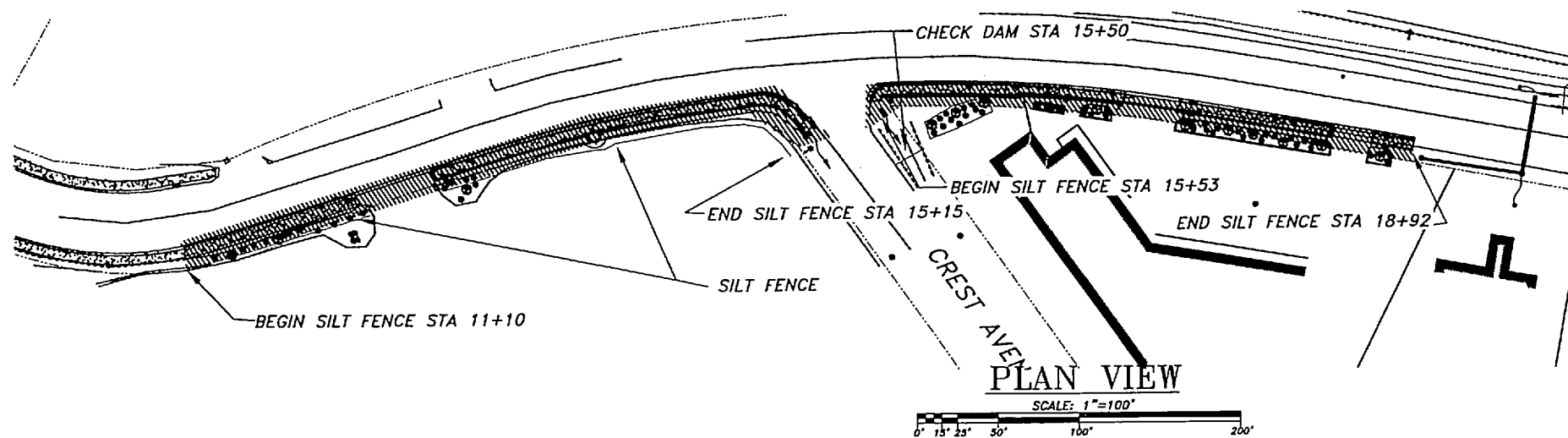
SECTION A
 N.T.S.



SECTION B
 N.T.S.



2 SILT FENCE DETAIL
 N.T.S.



Project As-Built Drawings have been reviewed by the Project Engineer and represent to the best of my knowledge, the project as constructed.
 PE *Tim Berg* Date 9/15/08

NOTE: DO NOT SCALE FROM THESE PLANS—USE DIMENSIONS

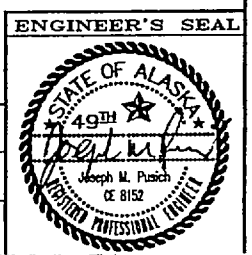
BY:	DATE:	DESCRIPTION OF CHANGE:

RECORD OF REVISIONS

STATE OF ALASKA
 DEPARTMENT OF TRANSPORTATION AND PUBLIC FACILITIES
 SOUTHEAST REGION DESIGN & CONSTRUCTION

JNU - OLD DAIRY ROAD SHOULDER WIDENING
 EROSION & SEDIMENT CONTROL PLAN

DESIGNED BY: J.L.G.	PROJECT NO. 68516/MGS-MGL-0956(30)
DRAWN BY: J.L.G.	DATE: 2004
CHECKED BY: J.M.P.	SHEET 9 OF 9



G:\jnu\68516\Plan\15-ERS050.dwg PLOT: July 06, 2004 at: 2:07pm