

LEGEND	
①	EXISTING GROUND
②	2" ASPHALT CONCRETE, TYPE II, CLASS B
③	6" CRUSHED ASPHALT BASE COURSE
④	LINEAR GRADING

**TYPICAL SECTION**  
STA. 10+00 TO 38+00

**TYPICAL SECTION NOTES:**

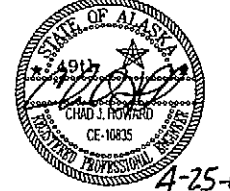
1. THE LIMITS OF PULVERIZING SHALL BE AS CLOSE TO THE FACE OF GUARDRAIL AS POSSIBLE. ACTUAL CRUSHED ASPHALT BASE COURSE LIMITS SHALL BE DETERMINED BY THE ENGINEER.
2. PULVERIZING DEPTH SHALL BE THE FULL DEPTH OF EXISTING PAVEMENT PER SECTION 308. PULVERIZING TO CONSTRUCT CRUSHED ASPHALT BASE COURSE SHALL BE PAID FOR UNDER ITEM 308.
3. CONTRACTOR SHALL MAKE INITIAL PASS THEN ADD AGGREGATE FOR CRUSHED ASPHALT BASE COURSE, IF REQUIRED, TO MEET A SMOOTH AND UNIFORM GRADE. THE ENGINEER SHALL APPROVE GRADE, PRIOR TO MIXING OIL AND CEMENT IN SECOND PASS.
4. LINEAR GRADING SHALL CONSIST OF GRADING, SHAPING, AND COMPACTING THE CRUSHED ASPHALT BASE MATERIAL AS SHOWN ON THE TYPICAL SECTION. SEE SECTION 308 OF THE SPECIAL PROVISIONS.
5. THE EXISTING PAVEMENT CONSISTS OF 4.5" OF A.T.B. AND 2.0" OF ASPHALT CONCRETE. ACTUAL PAVEMENT DEPTH MAY BE GREATER AT LOCATIONS OF MAINTENANCE PATCHES.
6. FOUR CORES WERE DRILLED TO DETERMINE EXISTING PAVEMENT THICKNESS. THE LOCATION AND THICKNESS OF EACH CORE WAS:

CORE	LOCATION	THICKNESS
1	15+00 RT.	6 3/4"
2	25+00 RT.	6 1/4"-6 1/2"
3	35+00 LT.	5 3/4"
4	20+00 LT.	5 3/4"

**GENERAL NOTES:**

1. THE INFORMATION CONTAINED IN THESE PLANS HAS BEEN DEVELOPED FROM AS-BUILTS AND FIELD INVESTIGATION, AND HAS BEEN MADE AS COMPLETE AND ACCURATE AS POSSIBLE.
2. THE LOCATIONS OF EXISTING FEATURES AND UTILITIES SHOWN ON THESE PLANS ARE APPROXIMATE AND SHALL BE FIELD VERIFIED BY THE CONTRACTOR PRIOR TO COMMENCEMENT OF CONSTRUCTION ACTIVITIES.

DO NOT SCALE FROM THESE DRAWINGS USE DIMENSIONS

CHECKED BY: C. HOWARD  DESIGNED BY: J. WEAVER DRAWN BY: J. W.R.S.	STATE OF ALASKA DEPARTMENT OF TRANSPORTATION & PUBLIC FACILITIES DESIGN & ENGINEERING SERVICES DIVISION-SOUTHEAST REGION <b>JNU-THANE ROAD          PAVEMENT REHABILITATION          PROJECT #68334</b>																	
<b>TYPICAL SECTION</b>																		
PATH: Q:\JNU\68334\PLANSET\B_TYP.DWG TAB: B1 Wed, 25/Apr/07 02:00PM RKSNYDER																		
<table border="1"> <thead> <tr> <th colspan="3">REVISIONS</th> </tr> <tr> <th>NO.</th> <th>DATE</th> <th>DESCRIPTION</th> </tr> </thead> <tbody> <tr> <td> </td> <td> </td> <td> </td> </tr> </tbody> </table>	REVISIONS			NO.	DATE	DESCRIPTION				<table border="1"> <thead> <tr> <th>PROJECT DESIGNATION</th> <th>YEAR</th> <th>SHEET NO.</th> <th>TOTAL SHEETS</th> </tr> </thead> <tbody> <tr> <td>68334</td> <td>2007</td> <td>B1</td> <td>11</td> </tr> </tbody> </table>	PROJECT DESIGNATION	YEAR	SHEET NO.	TOTAL SHEETS	68334	2007	B1	11
REVISIONS																		
NO.	DATE	DESCRIPTION																
PROJECT DESIGNATION	YEAR	SHEET NO.	TOTAL SHEETS															
68334	2007	B1	11															

### ESTIMATE OF QUANTITIES

ITEM NO.	ITEM	PAY UNIT	QTY.
308 (1)	CRUSHED ASPHALT BASE COURSE	SQUARE YARD	6,880 8870
308 (2)	CSS-1 ASPHALT FOR BASE COURSE	TON	67.51 70.75
308 (3)	PORTLAND CEMENT	TON	21.40 23.5
308 (4)	AGGREGATE FOR CABG	TON	354.05 500
401 (1)	ASPHALT CONCRETE, TYPE II, CLASS B	TON	931.17 880
401 (2)	ASPHALT CEMENT, GRADE PG58-28	TON	53.08 53
633 (1)	SILT FENCE	LINEAR FOOT	0 880
640 (1)	MOBILIZATION AND DEMOBILIZATION	LUMP SUM	ALL REQ.
641 (1)	EROSION AND POLLUTION CONTROL ADMINISTRATION	LUMP SUM	ALL REQ.
641 (2)	TEMPORARY EROSION AND POLLUTION CONTROL	CONTINGENT SUM	ALL REQ.
641 (5)	ROCK CHECK DAM	EACH	16 45
642 (1)	CONSTRUCTION SURVEYING	LUMP SUM	ALL REQ.
643 (2)	TRAFFIC MAINTENANCE	LUMP SUM	ALL REQ.
643 (3)	PERMANENT CONSTRUCTION SIGNS	LUMP SUM	ALL REQ.
643 (15)	FLAGGING	CONTINGENT SUM	ALL REQ.
643 (25)	TRAFFIC CONTROL	CONTINGENT SUM	ALL REQ.
670 (1)	PAINTED TRAFFIC MARKINGS	LUMP SUM	ALL REQ.

### ADDITIVE ALTERNATE A QUANTITIES

ITEM NO.	ITEM	PAY UNIT	QTY.
308 (1)-ALT A	CRUSHED ASPHALT BASE COURSE	SQUARE YARD	575
308 (2)-ALT A	CSS-1 ASPHALT FOR BASE COURSE	TON	6
308 (3)-ALT A	PORTLAND CEMENT	TON	2
308 (4)-ALT A	AGGREGATE FOR CABG	TON	34
401 (1)-ALT A	ASPHALT CONCRETE, TYPE II, CLASS B	TON	72.5
401 (2)-ALT A	ASPHALT CEMENT, GRADE PG58-28	TON	4.5
641 (1)-ALT A	EROSION AND POLLUTION CONTROL ADMINISTRATION	LUMP SUM	ALL REQ.
641 (2)-ALT A	TEMPORARY EROSION AND POLLUTION CONTROL	CONTINGENT SUM	ALL REQ.
641 (5)-ALT A	ROCK CHECK DAM	EACH	3
642 (1)-ALT A	CONSTRUCTION SURVEYING	LUMP SUM	ALL REQ.
643 (2)-ALT A	TRAFFIC MAINTENANCE	LUMP SUM	ALL REQ.
643 (15)-ALT A	FLAGGING	CONTINGENT SUM	ALL REQ.
643 (25)-ALT A	TRAFFIC CONTROL	CONTINGENT SUM	ALL REQ.
670 (1)-ALT A	PAINTED TRAFFIC MARKINGS	LUMP SUM	ALL REQ.

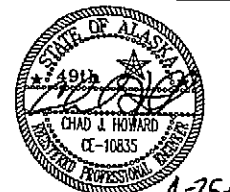
### ADDITIVE ALTERNATE B QUANTITIES

ITEM NO.	ITEM	PAY UNIT	QTY.
308 (1)-ALT B	CRUSHED ASPHALT BASE COURSE	SQUARE YARD	575
308 (2)-ALT B	CSS-1 ASPHALT FOR BASE COURSE	TON	6
308 (3)-ALT B	PORTLAND CEMENT	TON	2
308 (4)-ALT B	AGGREGATE FOR CABG	TON	34
401 (1)-ALT B	ASPHALT CONCRETE, TYPE II, CLASS B	TON	72.5
401 (2)-ALT B	ASPHALT CEMENT, GRADE PG58-28	TON	4.5
633 (1)-ALT B	SILT FENCE	LINEAR FOOT	155
641 (1)-ALT B	EROSION AND POLLUTION CONTROL ADMINISTRATION	LUMP SUM	ALL REQ.
641 (2)-ALT B	TEMPORARY EROSION AND POLLUTION CONTROL	CONTINGENT SUM	ALL REQ.
641 (5)-ALT B	ROCK CHECK DAM	EACH	1
642 (1)-ALT B	CONSTRUCTION SURVEYING	LUMP SUM	ALL REQ.
643 (2)-ALT B	TRAFFIC MAINTENANCE	LUMP SUM	ALL REQ.
643 (15)-ALT B	FLAGGING	CONTINGENT SUM	ALL REQ.
643 (25)-ALT B	TRAFFIC CONTROL	CONTINGENT SUM	ALL REQ.
670 (1)-ALT B	PAINTED TRAFFIC MARKINGS	LUMP SUM	ALL REQ.

### BASIS OF ESTIMATE

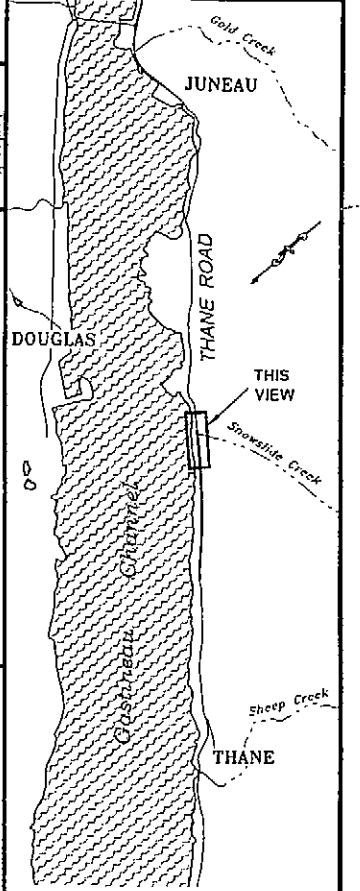
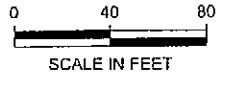
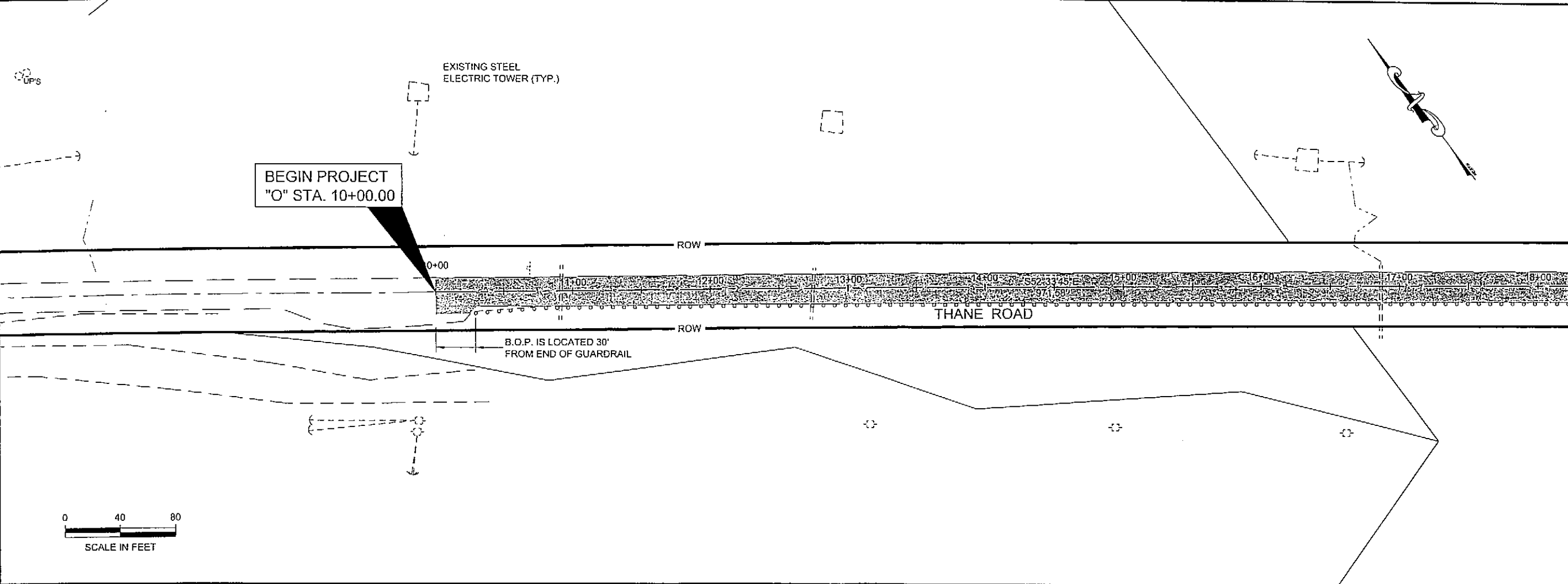
Item No.	Item	Estimating Factor
308 (2)	CSS-1 ASPHALT FOR BASE COURSE	2.5 GAL/SY
308 (2)	CSS-1 ASPHALT FOR BASE COURSE	243 GAL/TON
308 (3)	PORTLAND CEMENT	6.8 LB/SY
308 (4)	AGGREGATE FOR CABG	1.95 TON/CY
401 (1)	ASPHALT CONCRETE, TYPE II, CLASS B	120 LB/SY/IN
401 (2)	ASPHALT CEMENT, GRADE PG58-28	6.0% OF ITEM 401 (1)
401 (2)	ASPHALT CEMENT, GRADE PG58-28	237 GAL/TON
670 (1)	PAINTED TRAFFIC MARKINGS	CENTERLINE & FOG LINE FOR LENGTH OF PROJECT

DO NOT SCALE FROM THESE DRAWINGS USE DIMENSIONS

CHECKED BY: C. HOWARD 		STATE OF ALASKA DEPARTMENT OF TRANSPORTATION & PUBLIC FACILITIES DESIGN & ENGINEERING SERVICES DIVISION-SOUTHEAST REGION	
DESIGNED BY: J. WEAVER DRAWN BY: J.W./R.S.		JNU-THANE ROAD PAVEMENT REHABILITATION PROJECT #68334	
PATH: C:\UNL\68334\PLANSETA-C_TSHT&EST.DWG TAB: C1 Wed, 25/Apr/07 01:59PM		ESTIMATE OF QUANTITIES & SUMMARIES	
REVISIONS NO. DATE DESCRIPTION		PROJECT DESIGNATION 68334	YEAR 2007
		SHEET NO. C1	TOTAL SHEETS 11

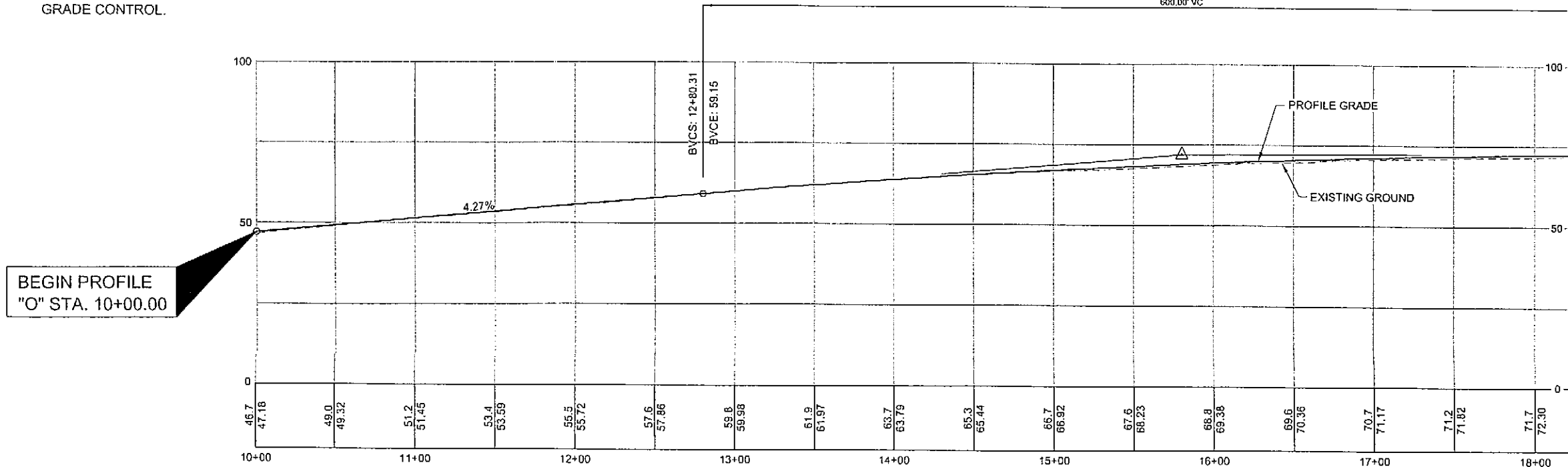
RKSNYDER  
 TAB: F1 Wednesday, April 25, 2007 2:13:26 PM  
 ADDENDUM NUMBER  
 ATTACHMENT NUMBER

RECORD OF REVISIONS		
No.	DATE	DESCRIPTION



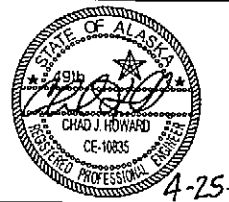
**PROFILE NOTE:**  
 PROFILE SHOWN FOR INFORMATION ONLY, SEE SECTION 642 OF THE SPECIAL PROVISIONS FOR GRADE CONTROL.

PVI STA = 15+80.31  
 PVI ELEV = 71.96  
 A.D. = -4.02  
 K = 149.20  
 600.00' VC



BEGIN PROFILE  
 "O" STA. 10+00.00

CHECKED BY: C. HOWARD



DESIGNED BY: J. WEAVER

DRAWN BY: J.W.J.R.S.

STATE OF ALASKA  
 DEPARTMENT OF TRANSPORTATION  
 & PUBLIC FACILITIES  
 DESIGN & ENGINEERING SERVICES  
 DIVISION-SOUTHEAST REGION

JNU-THANE ROAD  
 PAVEMENT REHABILITATION  
 PROJECT #68334

**PLAN AND PROFILE**

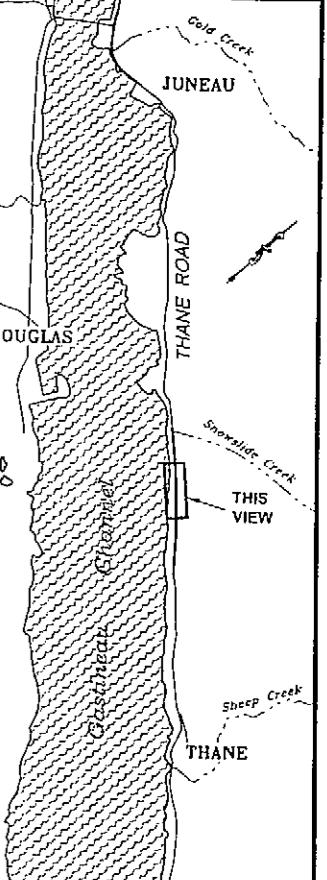
PROJECT DESIGNATION  
**68334**

STATE	YEAR
ALASKA	2007

SHEET NUMBER	TOTAL SHEETS
F1	11

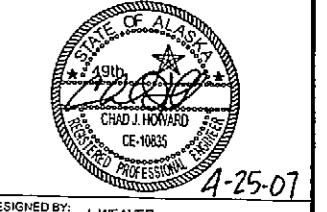
DO NOT SCALE FROM THESE DRAWINGS USE DIMENSIONS

RECORD OF REVISIONS		
No	DATE	DESCRIPTION



**PLAN LEGEND**

CHECKED BY: C. HOWARD



DESIGNED BY: J. WEAVER  
 DRAWN BY: J.W.J.R.S.

STATE OF ALASKA  
 DEPARTMENT OF TRANSPORTATION  
 & PUBLIC FACILITIES  
 DESIGN & ENGINEERING SERVICES  
 DIVISION-SOUTHEAST REGION

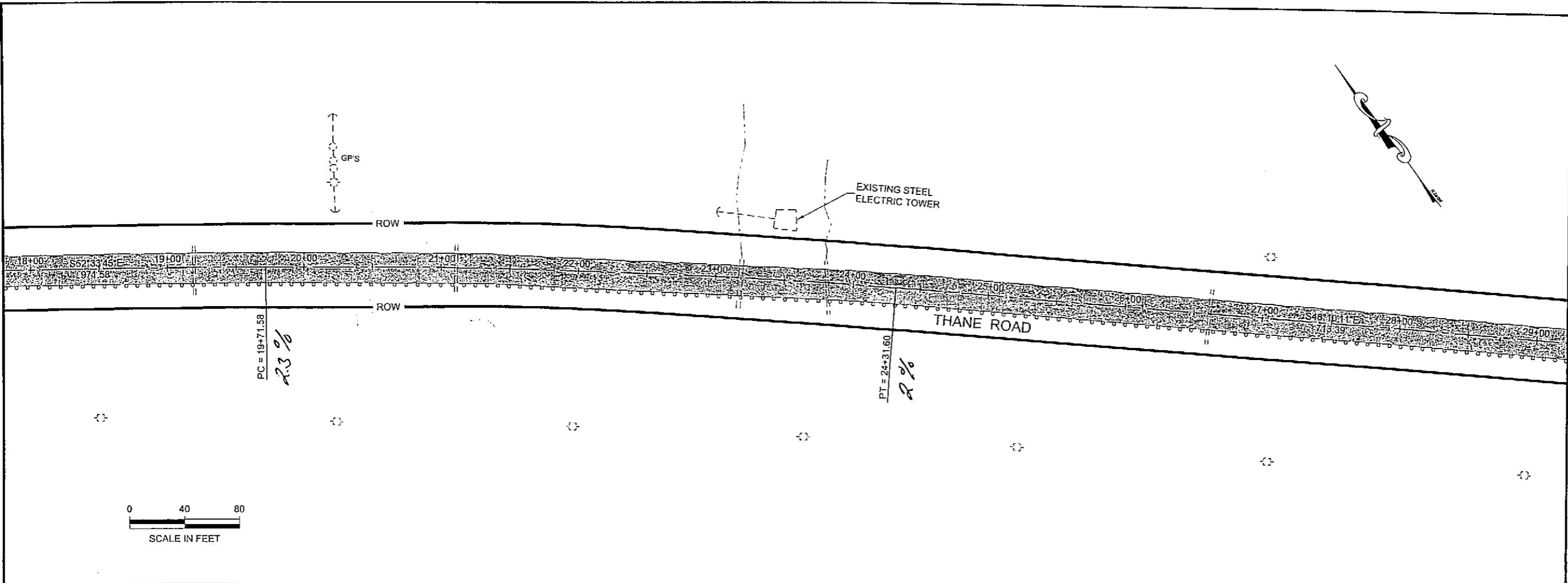
**JNU-THANE ROAD  
 PAVEMENT REHABILITATION  
 PROJECT #68334**

**PLAN AND  
 PROFILE**

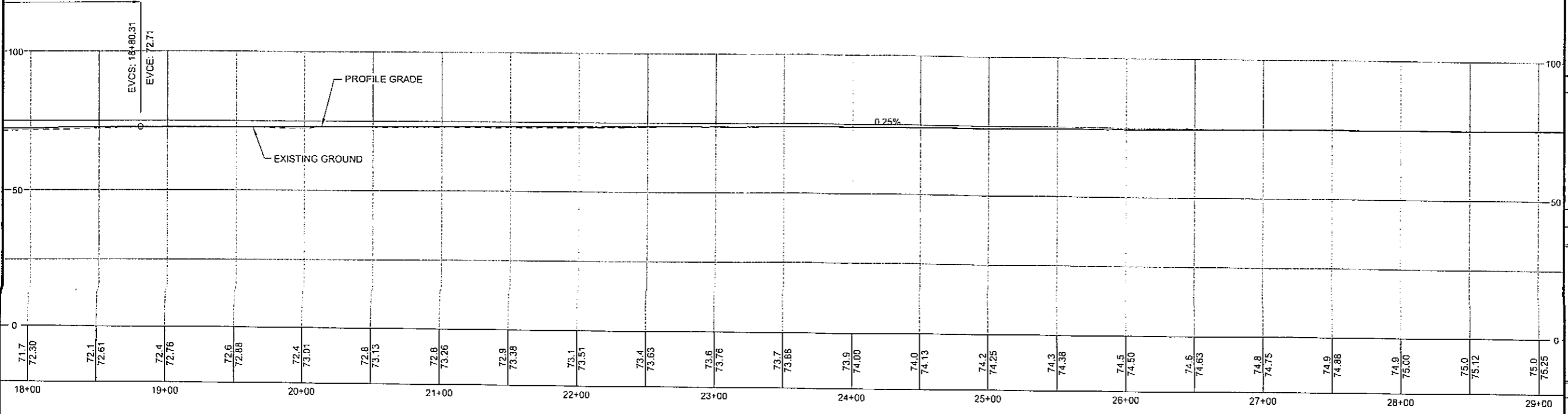
PROJECT DESIGNATION  
**68334**

STATE	YEAR
<b>ALASKA</b>	<b>2007</b>

SHEET NUMBER	TOTAL SHEETS
<b>F2</b>	<b>11</b>

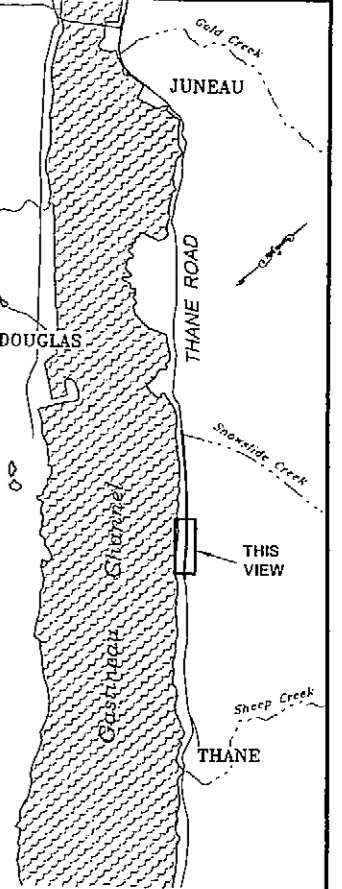
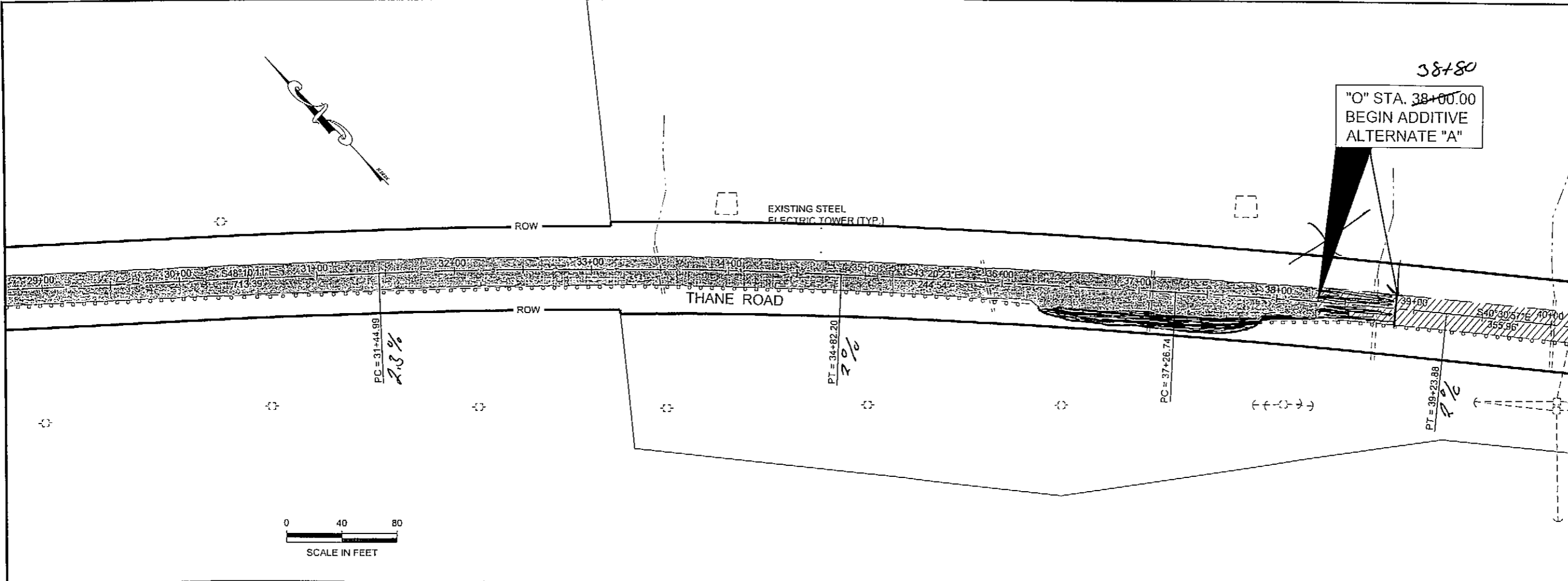


**PROFILE NOTE:**  
 PROFILE SHOWN FOR INFORMATION ONLY, SEE  
 SECTION 642 OF THE SPECIAL PROVISIONS FOR  
 GRADE CONTROL.



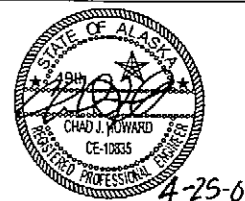
**DO NOT SCALE FROM THESE DRAWINGS USE DIMENSIONS**

RKSNYDER		
TAB: F3 Wednesday, April 25, 2007 2:16:13 PM		
ADDENDUM NUMBER		
ATTACHMENT NUMBER		
RECORD OF REVISIONS		
No.	DATE	DESCRIPTION



PLAN LEGEND

CHECKED BY: C. HOWARD



DESIGNED BY: J. WEAVER

DRAWN BY: J.W.J.R.S.

STATE OF ALASKA  
DEPARTMENT OF TRANSPORTATION  
& PUBLIC FACILITIES  
DESIGN & ENGINEERING SERVICES  
DIVISION-SOUTHEAST REGION

JNU-THANE ROAD  
PAVEMENT REHABILITATION  
PROJECT #68334

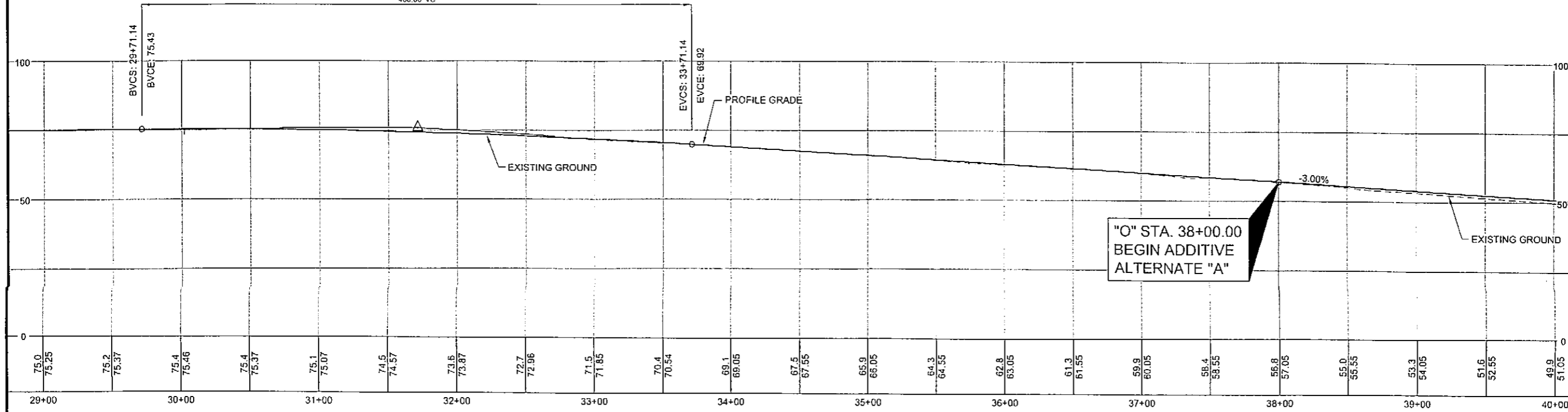
PLAN AND PROFILE

PROJECT DESIGNATION  
68334

STATE	YEAR
ALASKA	2007
SHEET NUMBER	TOTAL SHEETS
F3	11

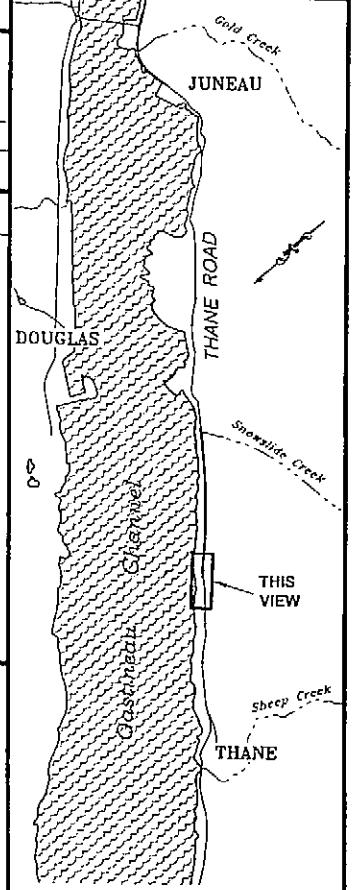
HIGH POINT ELEV = 75.46  
HIGH POINT STA = 30+01.76  
PVI STA = 31+71.14  
PVI ELEV = 75.92  
A.D. = -3.25  
K = 123.07  
400.00' VC

PROFILE NOTE:  
PROFILE SHOWN FOR INFORMATION ONLY, SEE  
SECTION 642 OF THE SPECIAL PROVISIONS FOR  
GRADE CONTROL.



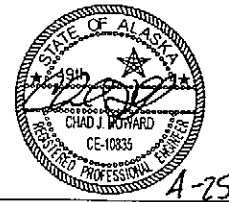
DO NOT SCALE FROM THESE DRAWINGS USE DIMENSIONS

RECORD OF REVISIONS		
No.	DATE	DESCRIPTION



**PLAN LEGEND**

CHECKED BY: C. HOWARD

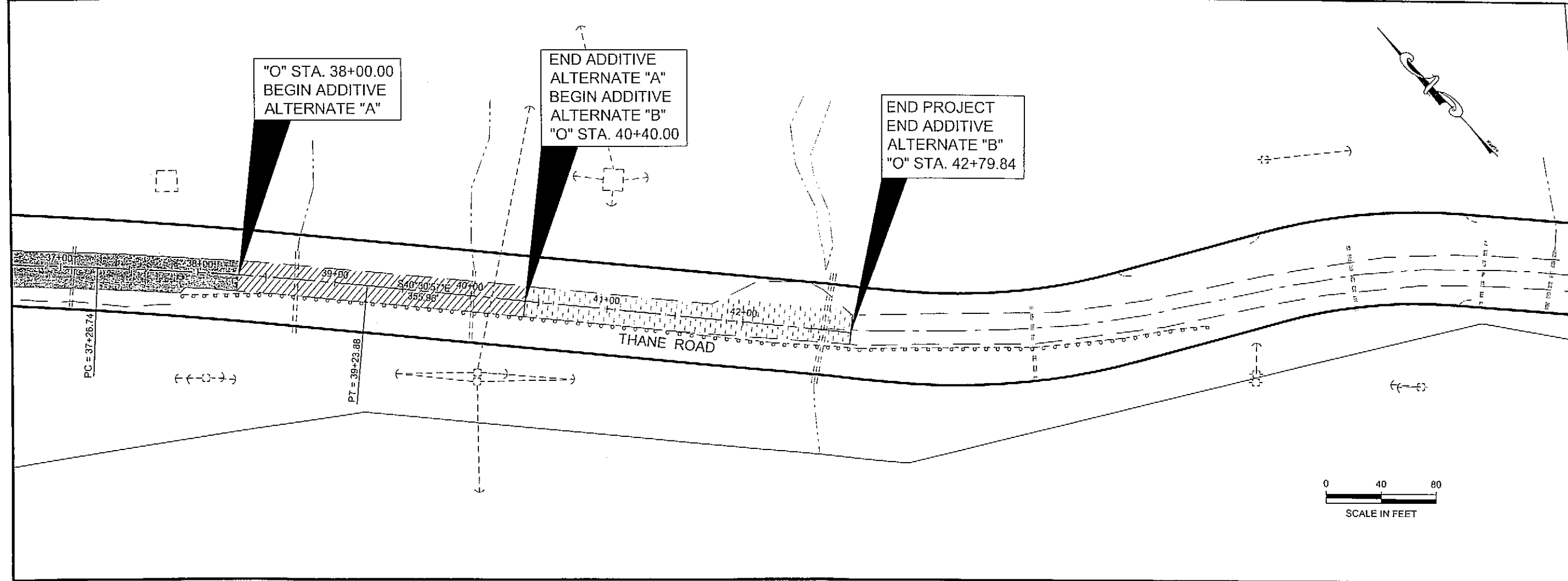


DESIGNED BY: J. WEAVER  
 DRAWN BY: J.W./R.S.

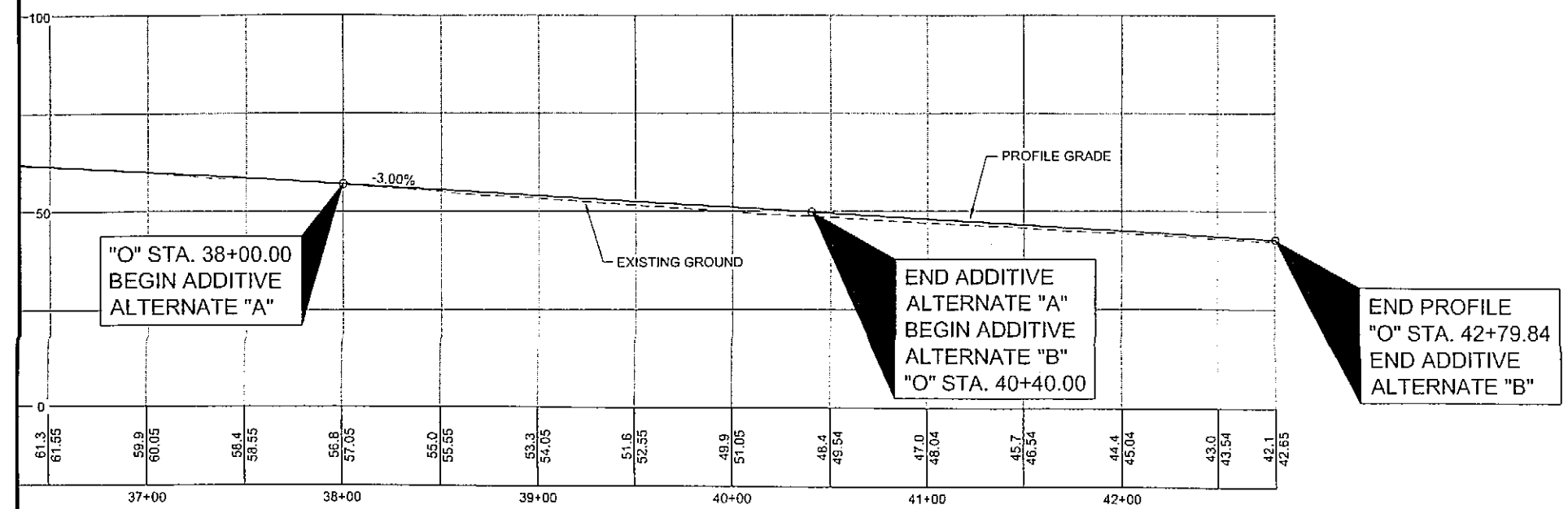
STATE OF ALASKA  
 DEPARTMENT OF TRANSPORTATION  
 & PUBLIC FACILITIES  
 DESIGN & ENGINEERING SERVICES  
 DIVISION-SOUTHEAST REGION  
**INU-THANE ROAD  
 PAVEMENT REHABILITATION  
 PROJECT #68334**

**PLAN AND PROFILE**

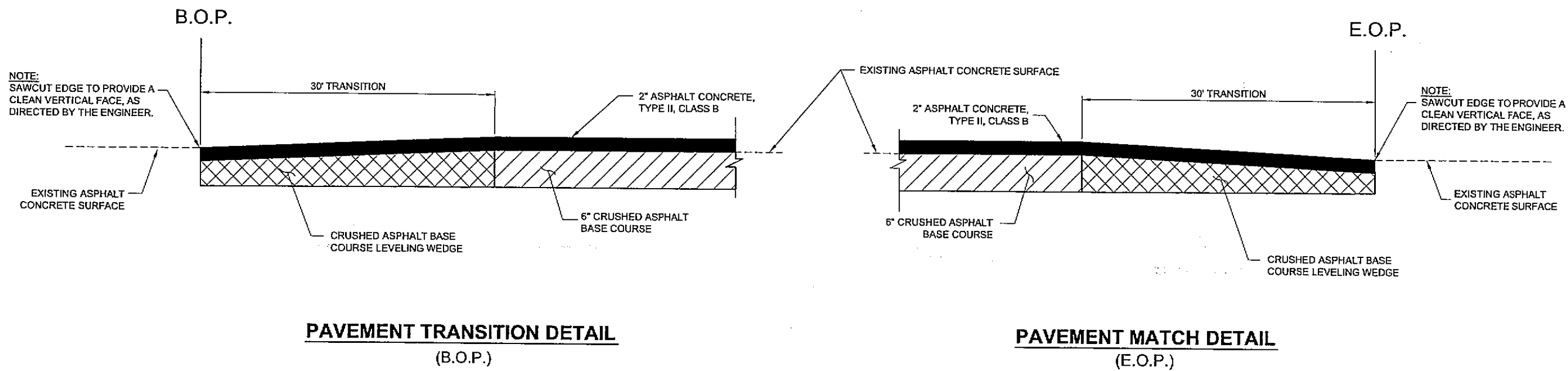
PROJECT DESIGNATION	
<b>68334</b>	
STATE	YEAR
<b>ALASKA</b>	<b>2007</b>
SHEET NUMBER	TOTAL SHEETS
<b>F4</b>	<b>11</b>



**PROFILE NOTE:**  
 PROFILE SHOWN FOR INFORMATION ONLY, SEE SECTION 642 OF THE SPECIAL PROVISIONS FOR GRADE CONTROL.

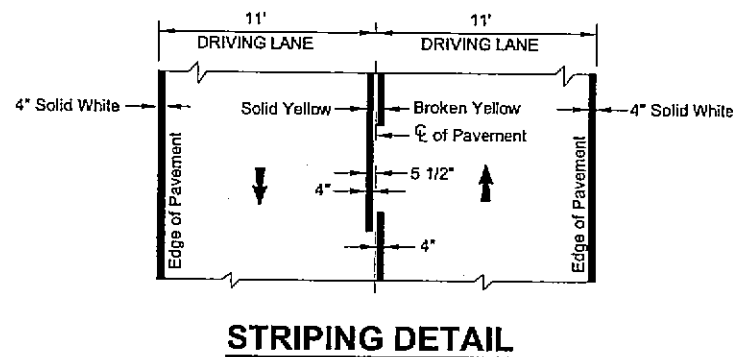


DO NOT SCALE FROM THESE DRAWINGS USE DIMENSIONS



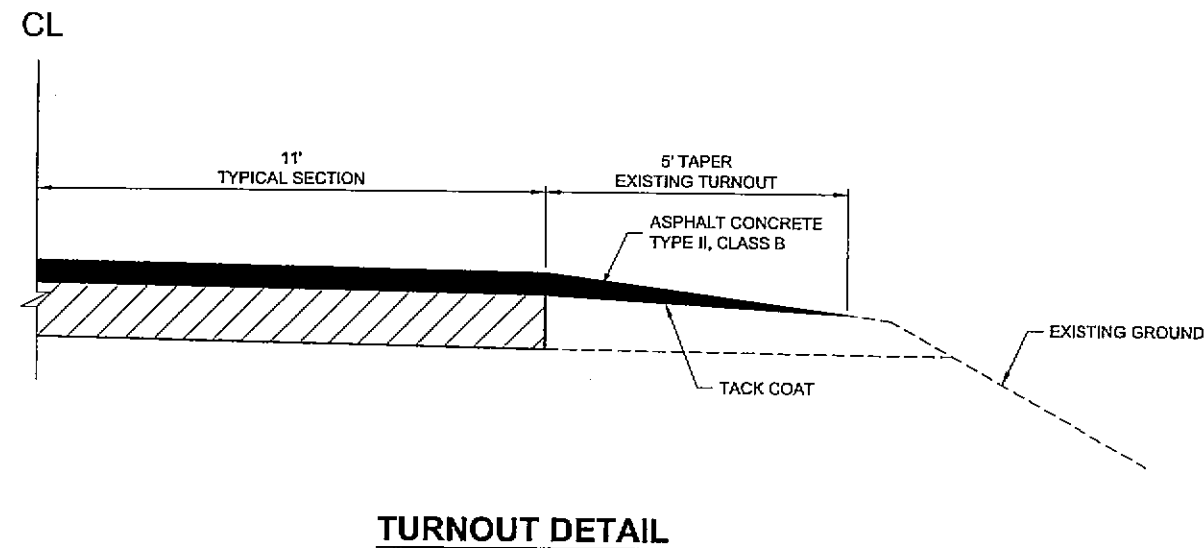
**PAVEMENT NOTE:**

1. SEE SECTION 401-3.14 OF SPECIAL PROVISIONS FOR JOINT REQUIREMENTS.



**STRIPING NOTE:**

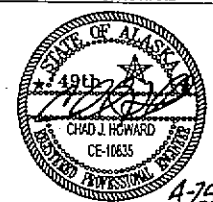
1. PASSING ZONES SHALL BE LOCATED IN FIELD. THE CONTRACTOR SHALL REFERENCE AND STAKE THE LOCATIONS OF PASSING ZONES PER SPECIAL PROVISION 67D.

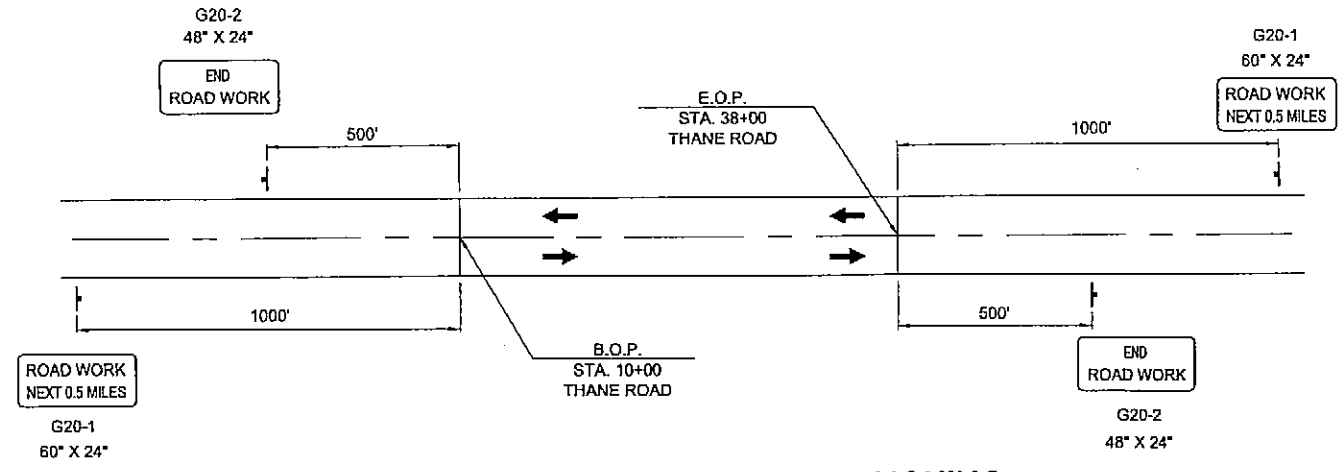


**TURNOUT NOTES:**

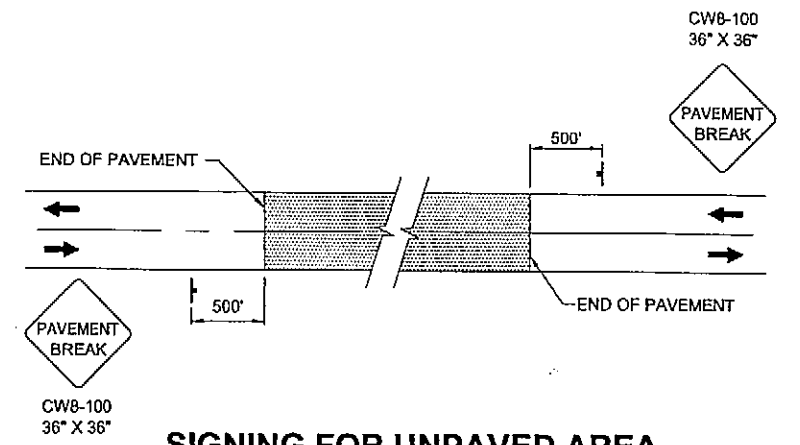
1. TACK COAT SHALL BE PAID UNDER ITEM 308(2).
2. TAPER ASPHALT FROM 2" DEPTH AT EDGE OF LANE TO EXISTING TURNOUT SURFACE.

DO NOT SCALE FROM THESE DRAWINGS USE DIMENSIONS

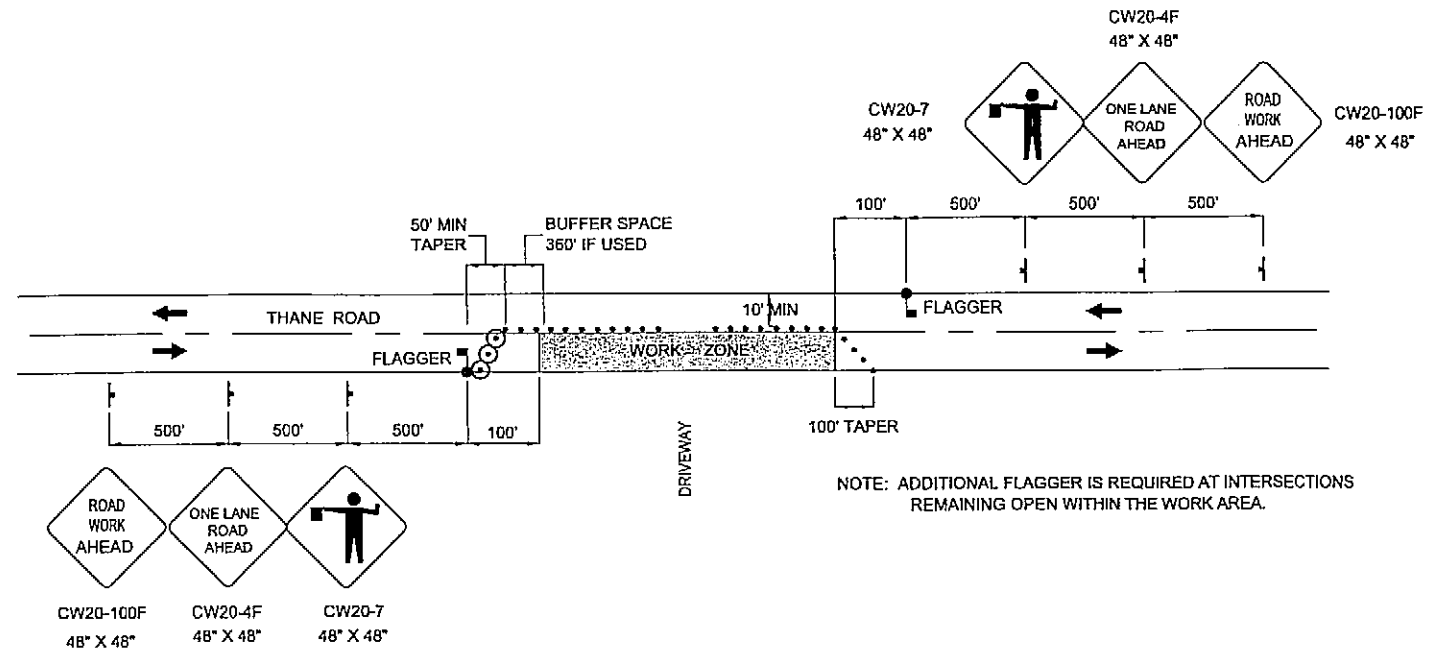
CHECKED BY: C. HOWARD  DESIGNED BY: J. WEAVER DRAWN BY: J.W./R.S.		STATE OF ALASKA DEPARTMENT OF TRANSPORTATION & PUBLIC FACILITIES DESIGN & ENGINEERING SERVICES DIVISION-SOUTHEAST REGION <b>JNU-THANE ROAD          PAVEMENT REHABILITATION          PROJECT #68334</b>																						
PATH: Q:\JNU\68334\PLANS\SET1_DETAILS.DWG TAB: J1 Wed, 25/Apr/07 11:11AM RKSNYDER		<b>CONSTRUCTION DETAILS</b>																						
<table border="1"> <thead> <tr> <th colspan="3">REVISIONS</th> <th>PROJECT DESIGNATION</th> <th>YEAR</th> <th>SHEET NO.</th> <th>TOTAL SHEETS</th> </tr> <tr> <th>NO.</th> <th>DATE</th> <th>DESCRIPTION</th> <th>68334</th> <th>2007</th> <th>J1</th> <th>11</th> </tr> </thead> <tbody> <tr> <td> </td> <td> </td> <td> </td> <td> </td> <td> </td> <td> </td> <td> </td> </tr> </tbody> </table>		REVISIONS			PROJECT DESIGNATION	YEAR	SHEET NO.	TOTAL SHEETS	NO.	DATE	DESCRIPTION	68334	2007	J1	11									
REVISIONS			PROJECT DESIGNATION	YEAR	SHEET NO.	TOTAL SHEETS																		
NO.	DATE	DESCRIPTION	68334	2007	J1	11																		



**PERMANENT CONSTRUCTION SIGNING**



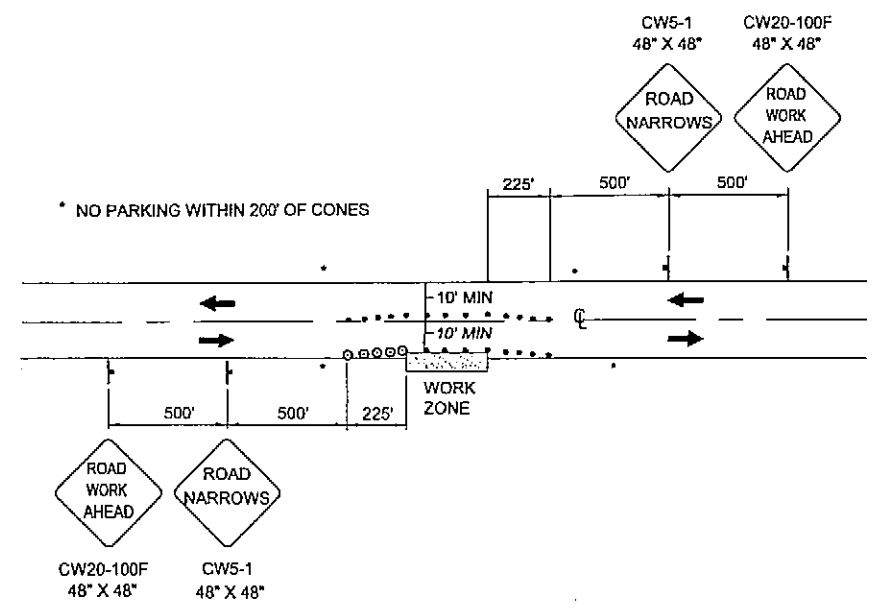
**SIGNING FOR UNPAVED AREA**



**TWO LANE ROADWAY-SINGLE LANE CLOSURE**

**TRAFFIC CONTROL NOTES:**

1. IT IS THE INTENT OF THIS TRAFFIC CONTROL PLAN (TCP) TO ILLUSTRATE SOME BUT NOT ALL OF THE TRAFFIC CONTROL CONFIGURATIONS THAT WILL BE REQUIRED BY THIS PROJECT. TRAFFIC CONTROL PLANS FOR CONFIGURATIONS NOT COVERED BY THIS TCP SHALL BE DEVELOPED BY THE CONTRACTOR AND SUBMITTED TO THE ENGINEER FOR APPROVAL PRIOR TO USE.
2. A MINIMUM OF ONE LANE SHALL BE MAINTAINED AT ALL TIMES AT WORK AREAS.
3. TWO LANES SHALL BE MAINTAINED AT ALL TIMES WITHIN THE PROJECT LIMITS IN NON-WORK AREAS AND DURING NON-WORKING HOURS.
4. DRIVING LANES SHALL BE A MINIMUM WIDTH OF 10'.
5. TRAFFIC DELAYS SHALL NOT EXCEED 5 MINUTES.
6. THE UNEVEN LANES (CW8-11) SIGN SHOULD BE USED DURING OPERATIONS THAT CREATE A DIFFERENCE IN ELEVATION BETWEEN ADJACENT LANES OF 1.5 INCHES OR GREATER.
7. FLAGGER STATIONS NEED TO BE ILLUMINATED AT NIGHT.
8. THE CONTRACTOR SHALL KEEP THE PUBLIC INFORMED OF HIS CONSTRUCTION ACTIVITIES THROUGH THE USE OF THE LOCAL NEWS MEDIA. NEWS RELEASES SHALL BE APPROVED BY THE PROJECT ENGINEER PRIOR TO THEIR RELEASE. NEWS RELEASES WILL BE REQUIRED BUT NOT LIMITED TO, THE ONSET OF WORK, GRINDING, PAVING, AND CHANGES IN THE LANE CONFIGURATIONS.
9. DRUM OR CONE SPACING NEEDS TO BE MAXIMUM 45' ALONG THE TAPER SECTION AND A 90' ALONG TANGENT, USING A MINIMUM OF 11 DEVICES.



**ROADWAY ENCROACHMENT FOR 45 MPH**

**LEGEND**

—	SIGN
●	CONE
⊙	DRUM
⊠	FLAGGING STATION

DO NOT SCALE FROM THESE DRAWINGS USE DIMENSIONS

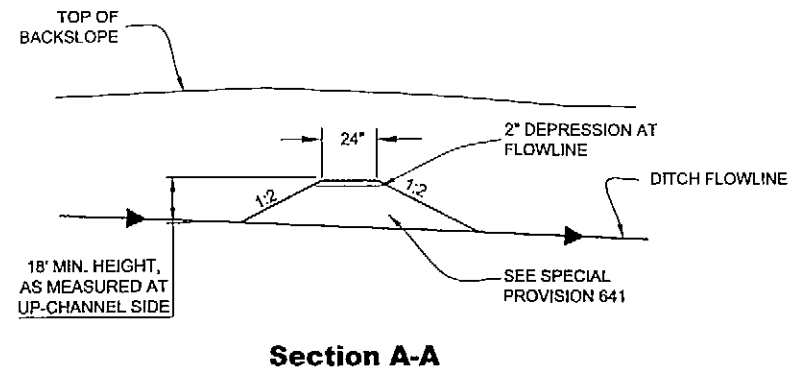
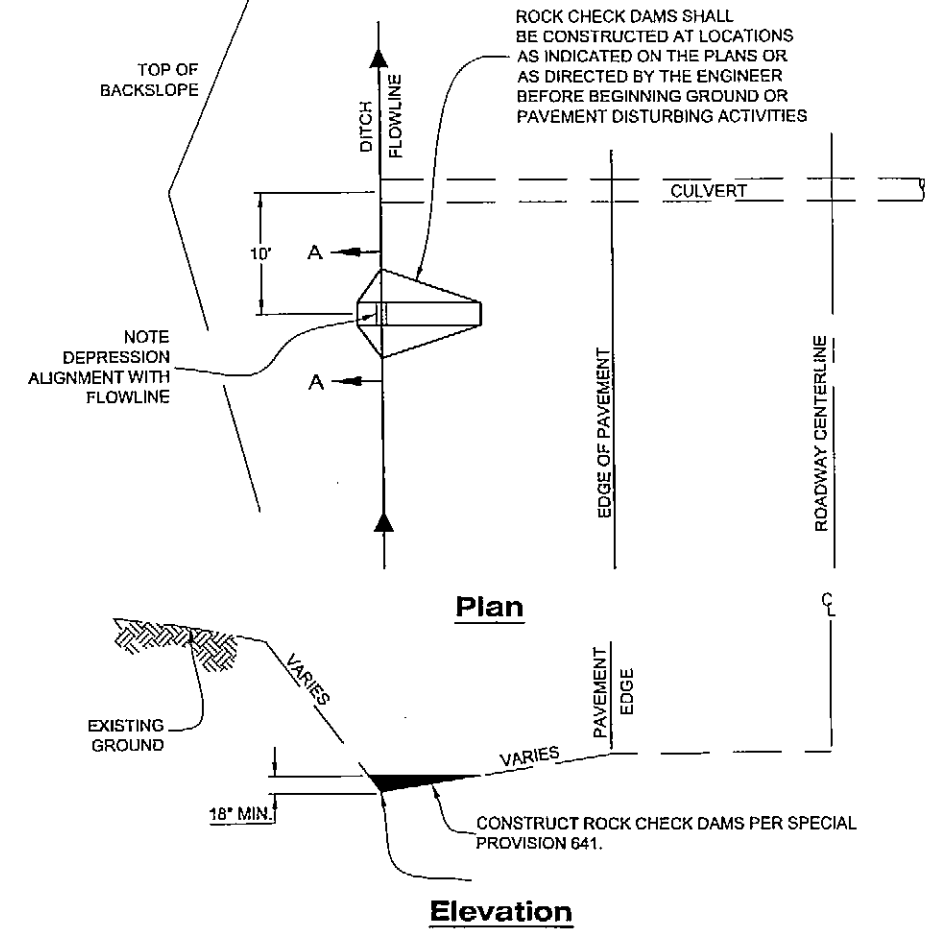
CHECKED BY: C. MOREHOUSE		STATE OF ALASKA DEPARTMENT OF TRANSPORTATION & PUBLIC FACILITIES DESIGN & ENGINEERING SERVICES DIVISION-SOUTHEAST REGION	
		<b>JNU-THANE ROAD PAVEMENT REHABILITATION PROJECT #68334</b>	
DESIGNED BY: J. WEAVER		<b>TRAFFIC CONTROL PLAN</b>	
DRAWN BY: D.D.J.R.S.		RKSNYDER	
PATH: Q:\JNU\68334\PLANSETS_TCP.DWG		PROJECT DESIGNATION	
TAB: S1 Wed, 25/Apr/07 11:14AM		YEAR	
REVISIONS		SHEET NO.	
NO.	DATE	DESCRIPTION	TOTAL SHEETS
			11
		68334	2007
		S1	

RKSNYDER  
 TAB: T1 Wednesday, April 25, 2007 11:21:14 AM  
 ADDENDUM NUMBER  
 ATTACHMENT NUMBER  
 RECORD OF REVISIONS

No.	DATE	DESCRIPTION

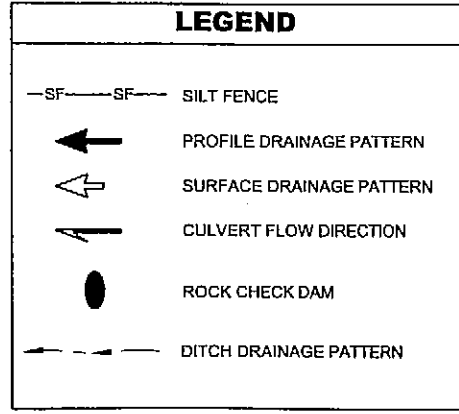
**EROSION & SEDIMENT CONTROL NOTES:**

- REFER TO APPENDIX B OF THE CONTRACT DOCUMENTS FOR THE ENVIRONMENTAL COMMITMENTS.
- THE LOCATIONS OF TEMPORARY EROSION & SEDIMENT POLLUTION CONTROLS ARE RECOMMENDATIONS. IT IS THE RESPONSIBILITY OF THE CONTRACTOR TO PREPARE AND IMPLEMENT A SWPPP ACCORDING TO SECTION 641 OF THE SPECS.

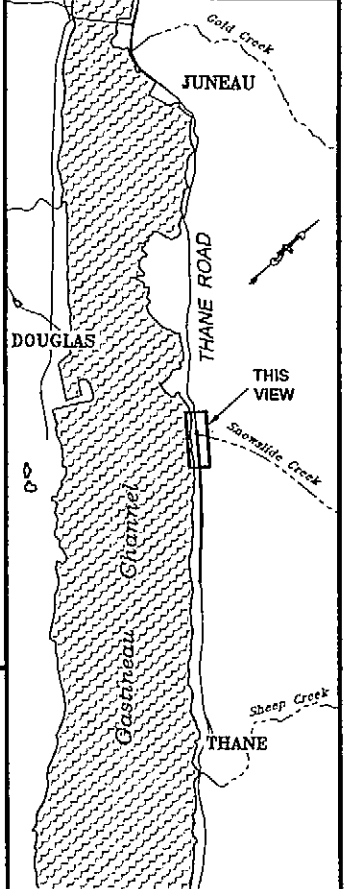
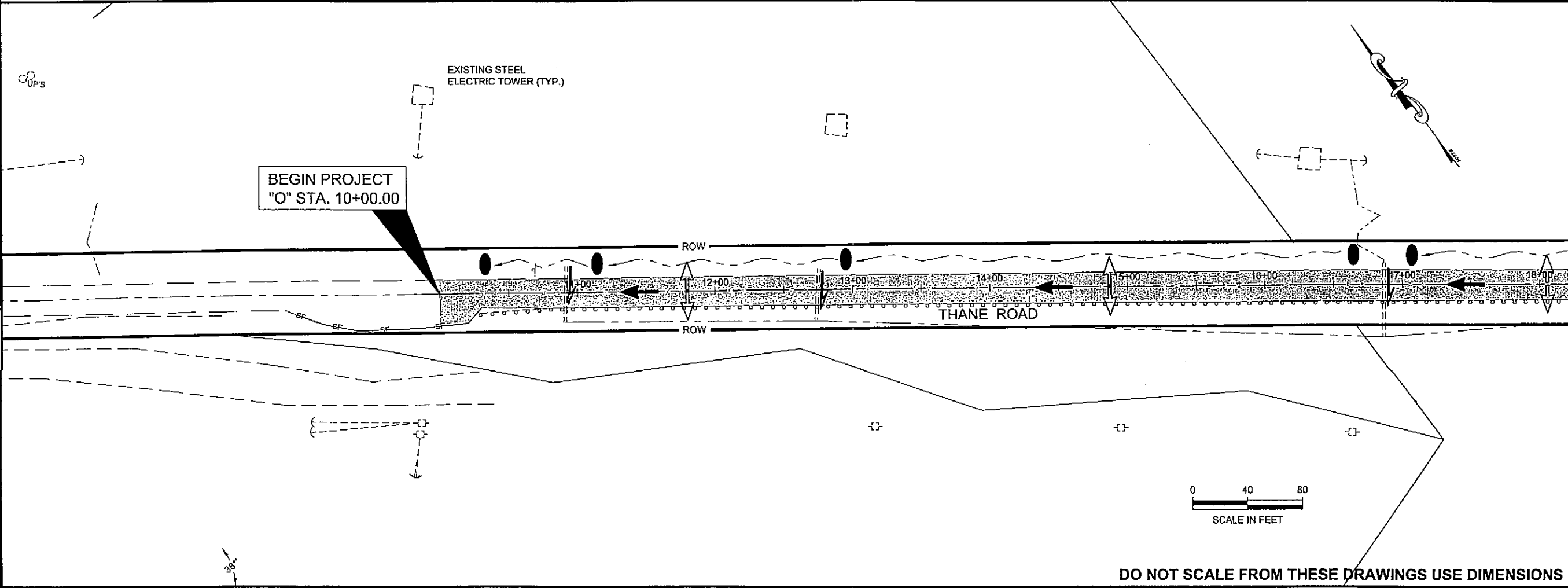


**ROCK CHECK DAM NOTES:**

- INSTALL EROSION AND SEDIMENT CONTROL DEVICES BEFORE BEGINNING GROUND OR PAVEMENT DISTURBING ACTIVITIES.
- MAINTAIN DEVICES. MONITOR DAILY. EXCAVATE CHECK DAMS WHEN 4" OR MORE SEDIMENT IS PRESENT.
- IF INSPECTION REVEALS WATER IS DISCHARGING BEYOND THE PROJECT WORK LIMITS, IMMEDIATELY IMPLEMENT CORRECTIVE ACTION. ADDITIONAL CHECK DAMS MAY BE REQUIRED.

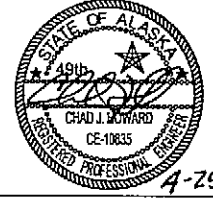


**ROCK CHECK DAM DETAILS**



**PLAN LEGEND**

CHECKED BY: C. HOWARD



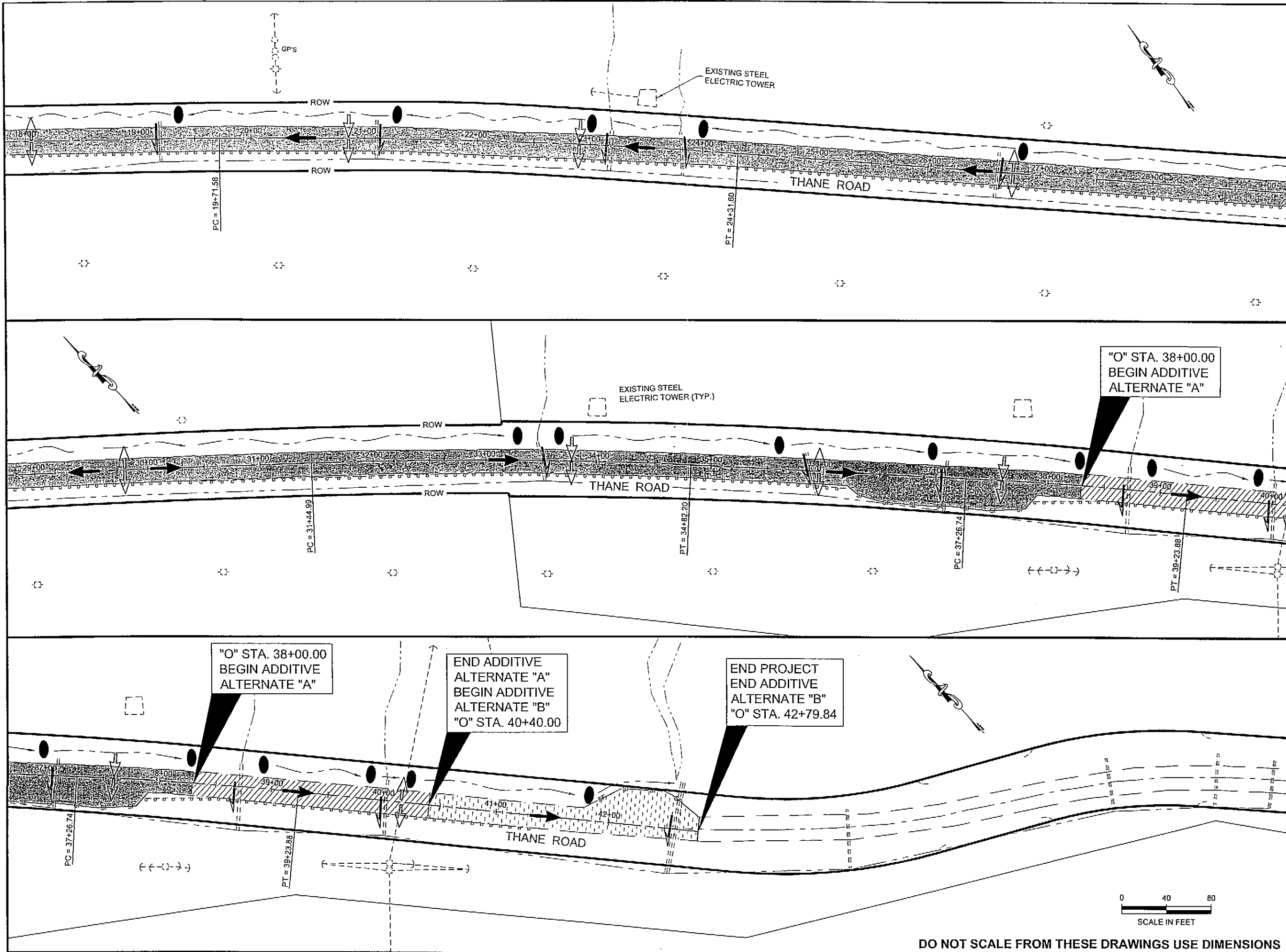
DESIGNED BY: J. WEAVER  
 DRAWN BY: J.W./R.S.

STATE OF ALASKA  
 DEPARTMENT OF TRANSPORTATION & PUBLIC FACILITIES  
 DESIGN & ENGINEERING SERVICES  
 DIVISION-SOUTHEAST REGION  
**JNU-THANE ROAD PAVEMENT REHABILITATION PROJECT #68334**

**ESCP PLAN**

PROJECT DESIGNATION	
68334	
STATE	YEAR
ALASKA	2007
SHEET NUMBER	TOTAL SHEETS
T1	11

DO NOT SCALE FROM THESE DRAWINGS USE DIMENSIONS



PATH:O:\JNU\68334\PLANSET\T2\_ESCP.DWG

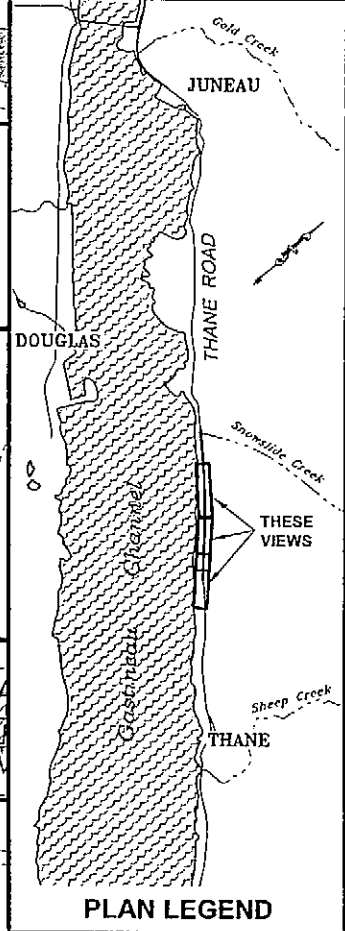
RKSNYDER  
TAB: T2 Wednesday, April 25, 2007 2:14:30 PM

ADDENDUM NUMBER

ATTACHMENT NUMBER

RECORD OF REVISIONS

No.	DATE	DESCRIPTION



CHECKED BY: C. HOWARD

DESIGNED BY: J. WEAVER  
DRAWN BY: J.W.J.R.S.

STATE OF ALASKA  
DEPARTMENT OF TRANSPORTATION  
& PUBLIC FACILITIES  
DESIGN & ENGINEERING SERVICES  
DIVISION-SOUTHEAST REGION

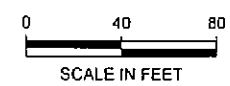
**JNU-THANE ROAD  
PAVEMENT REHABILITATION  
PROJECT #68334**

**ESCP PLAN**

PROJECT DESIGNATION

**68334**

STATE	YEAR
<b>ALASKA</b>	<b>2007</b>
SHEET NUMBER	TOTAL SHEETS
<b>T2</b>	<b>11</b>



**DO NOT SCALE FROM THESE DRAWINGS USE DIMENSIONS**