

Pile Cutoff Elevation +30[±] ft. M.L.L.W.
(Existing Piles Also +30[±] Ft.)

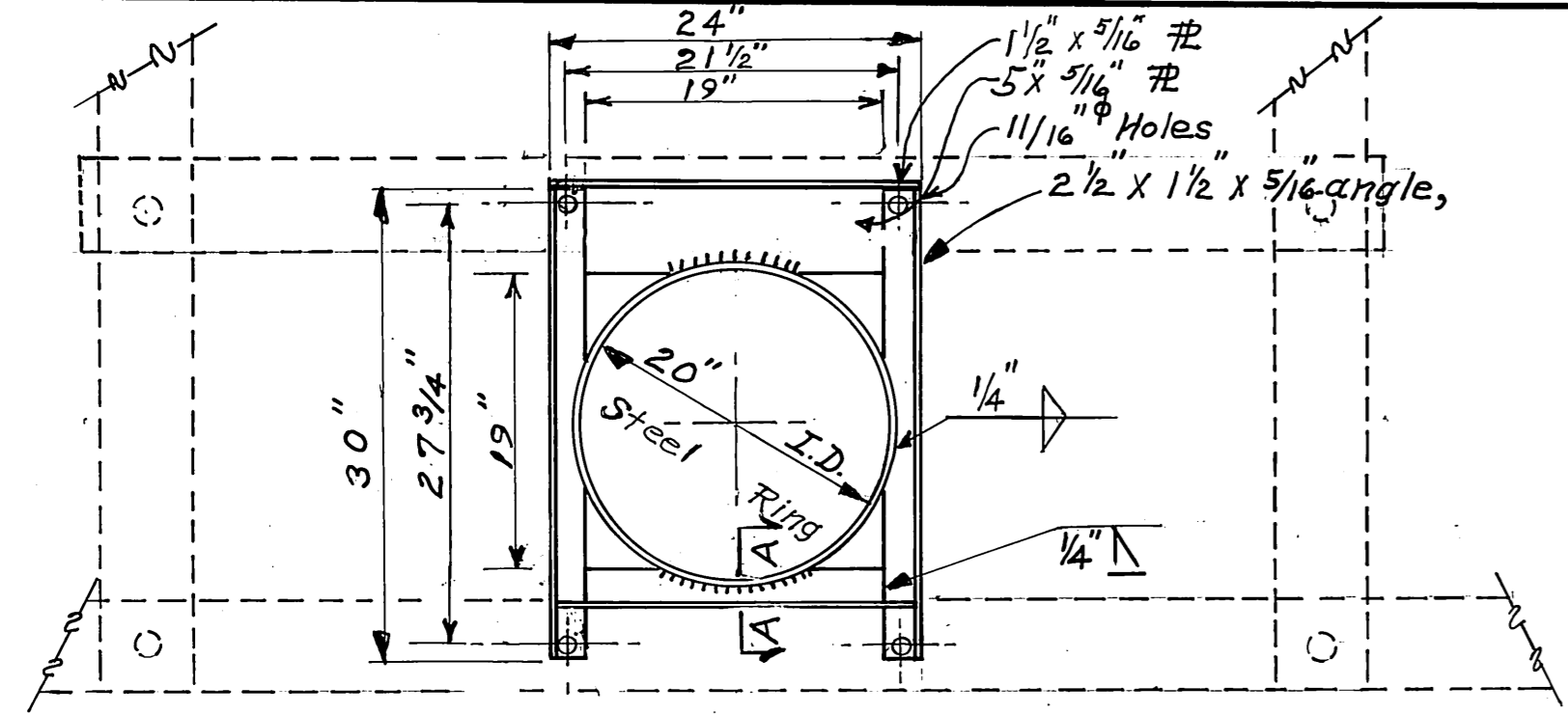
- PROJECT SCOPE:**
1. Furnish And Install 10'x150' Timber Float
 2. Furnish And Drive ~~5~~ ⁶ ~~Concrete~~ ^{Timber} Piles.
5 steel 14" φ x 375" wall x 80' long piles.

PROJECT LAYOUT
Scale 1" = 50'-0"

AS-BUILT
DATE 1/1/79
DESIGNED BY R.P.B.
DRAWN BY R.M.H.
CHECKED BY R.P.B.

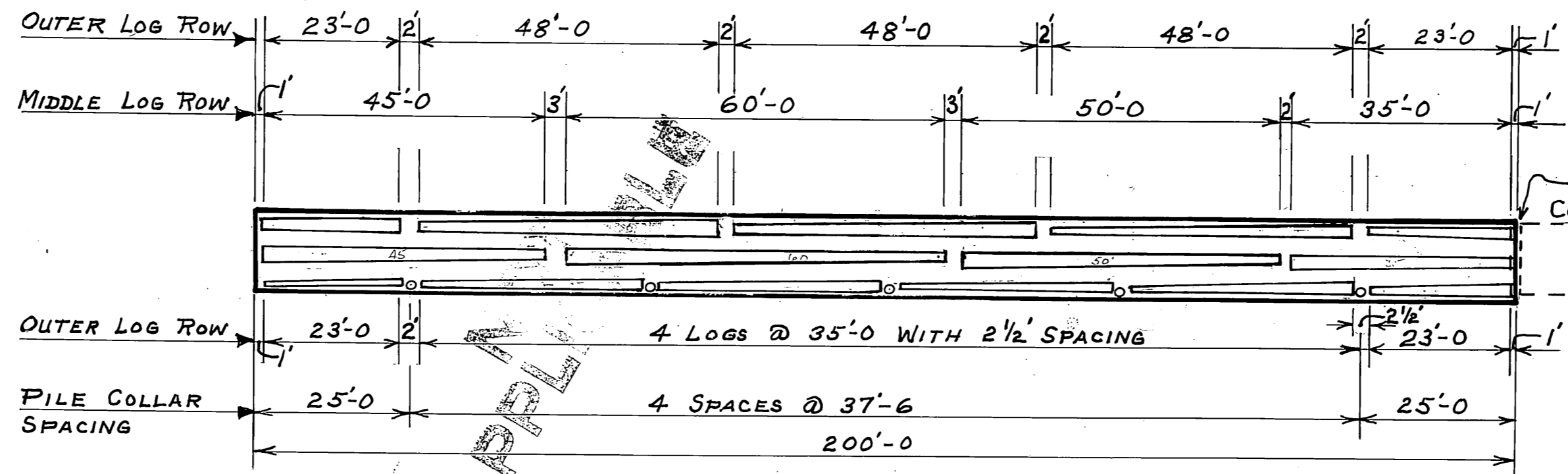


DO NOT SCALE THIS DRAWING - USE DIMENSIONS		
STATE OF ALASKA		
DIVISION OF HARBORS		
Auke Bay,	Alaska	
PROJECT		
SCALE 1" = 50'	SURVEYED _____	APPROVED _____
DESIGNED R.M.H.	DRAWN R.M.H.	DON STATTER DIRECTOR
CHECKED R.P.B.	DATE 12-18-77	
PROJECT NUMBER 3-78101	SHEET 2 OF 4	

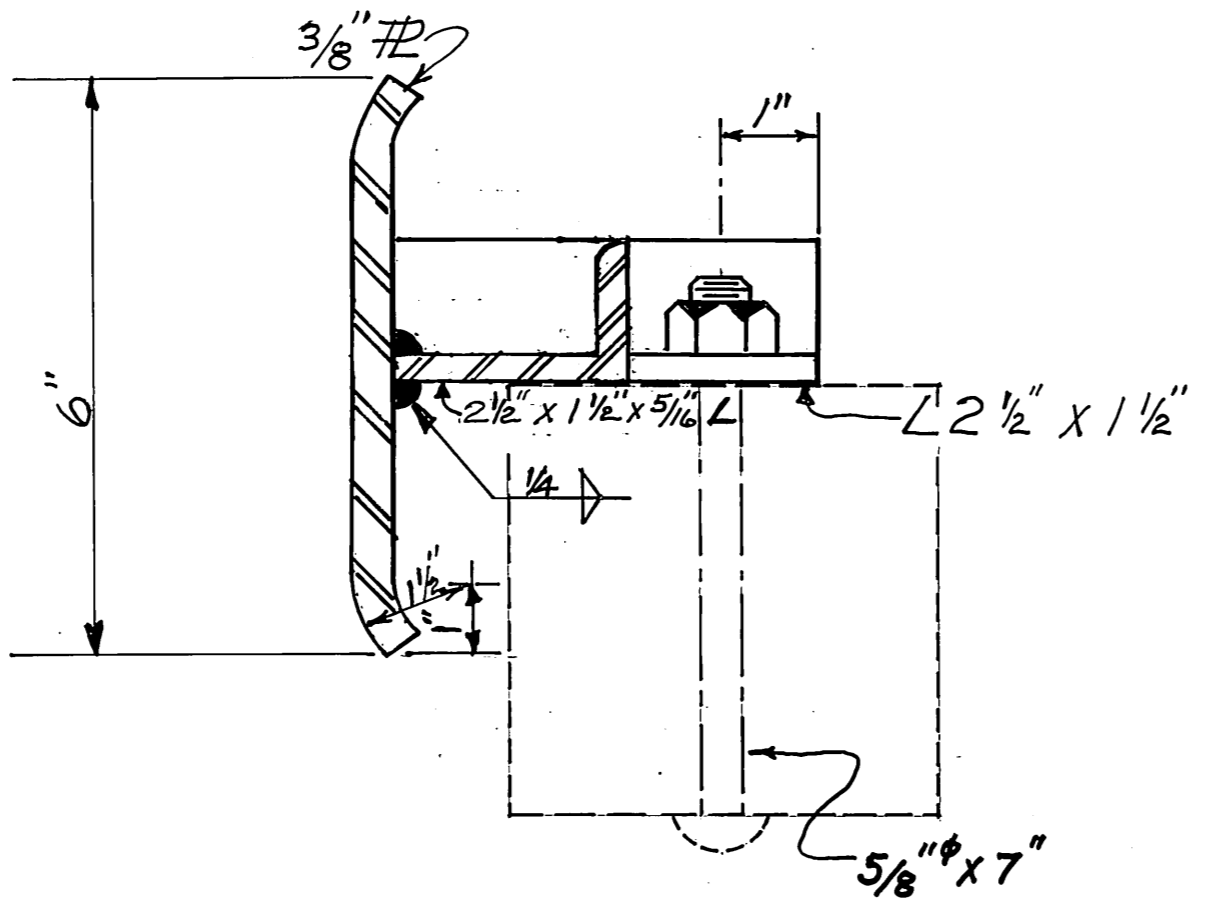


STEEL PILE COLLAR PLAN
1" = 1'-0"

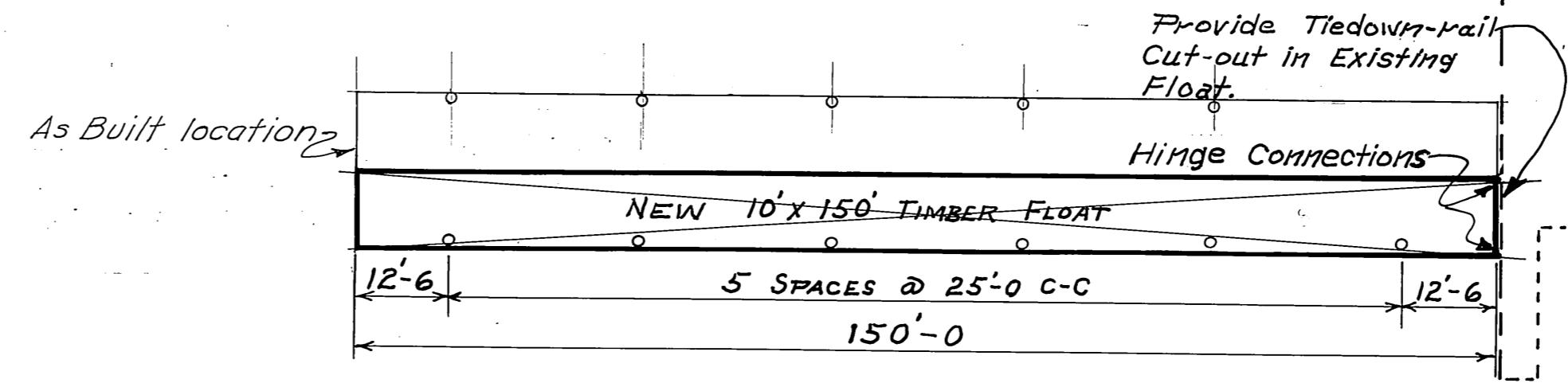
GENERAL NOTE:
Grind interior pile collar weld smooth with metal.



12' LOG PLAN
Scale 1" = 20'-0"

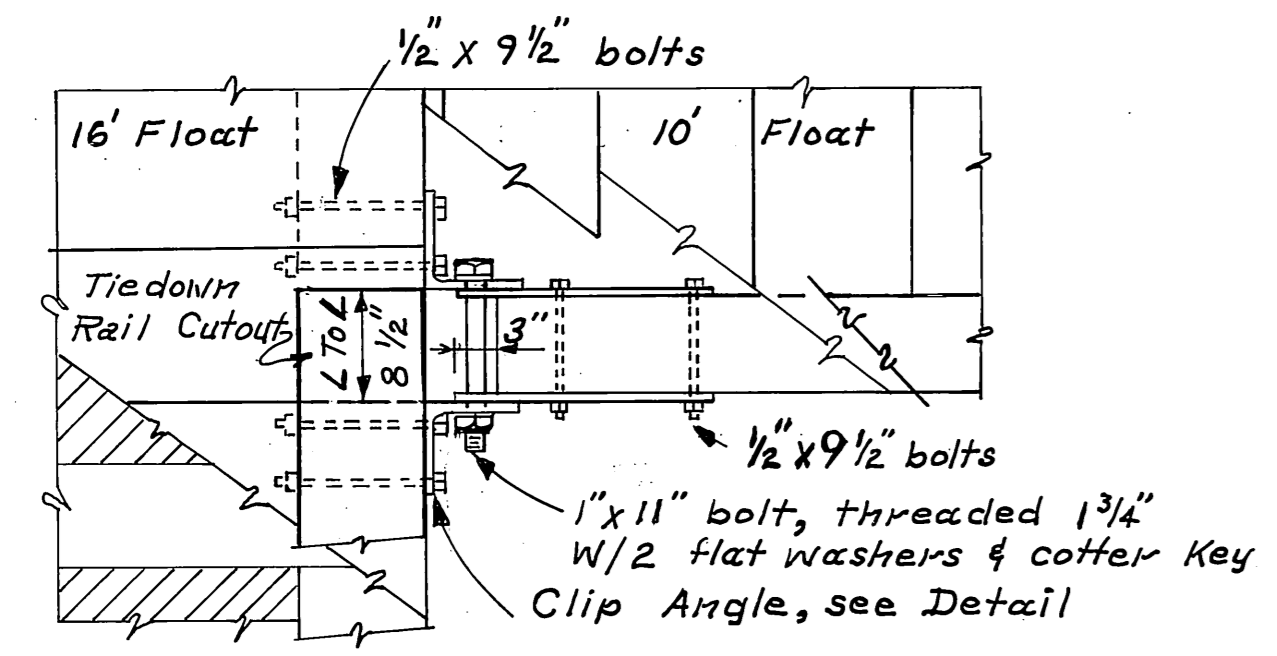


SECTION A-A
Scale: None

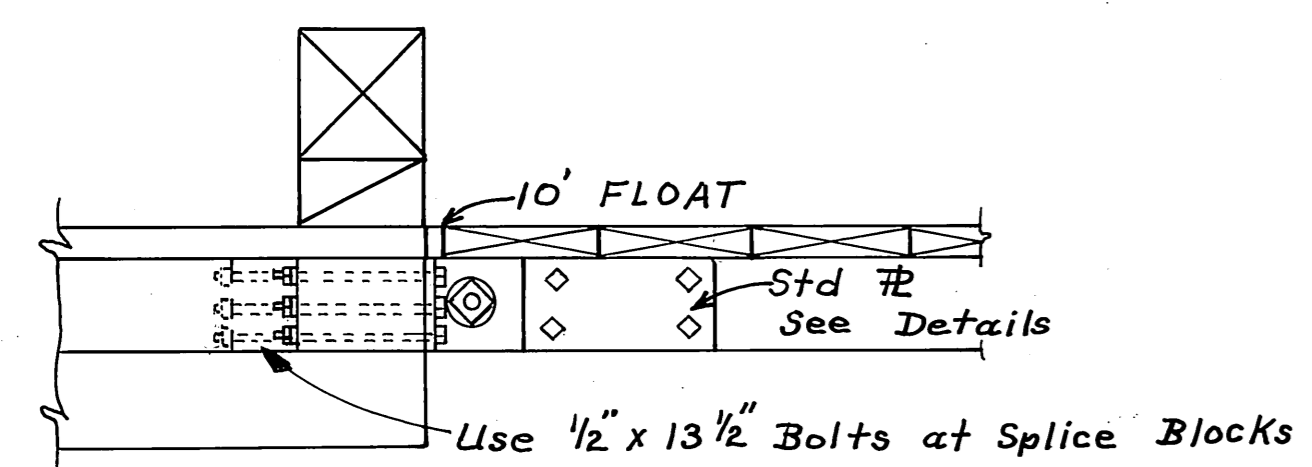


STANDARD 10' FLOAT PLAN
Scale 1" = 20'-0"

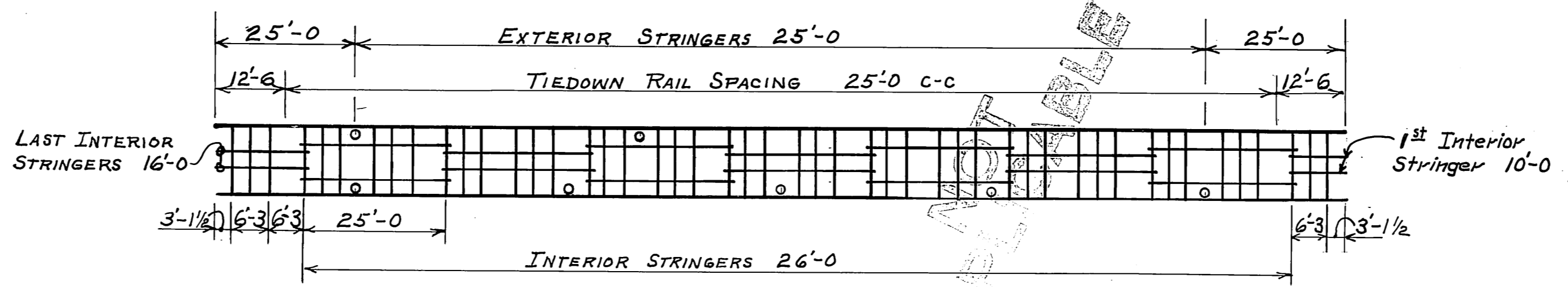
NOT APPLICABLE
Existing Float Relocation 16' x 50'



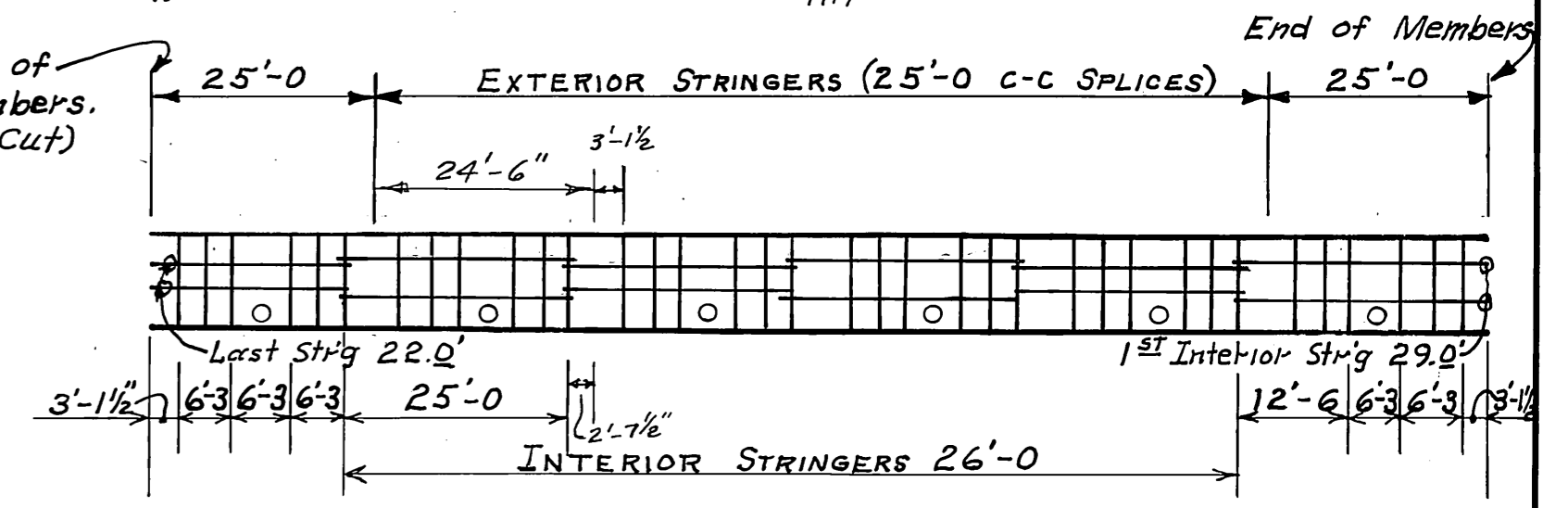
PLAN



ELEVATION
HING CONNECTION
1" = 1'-0"

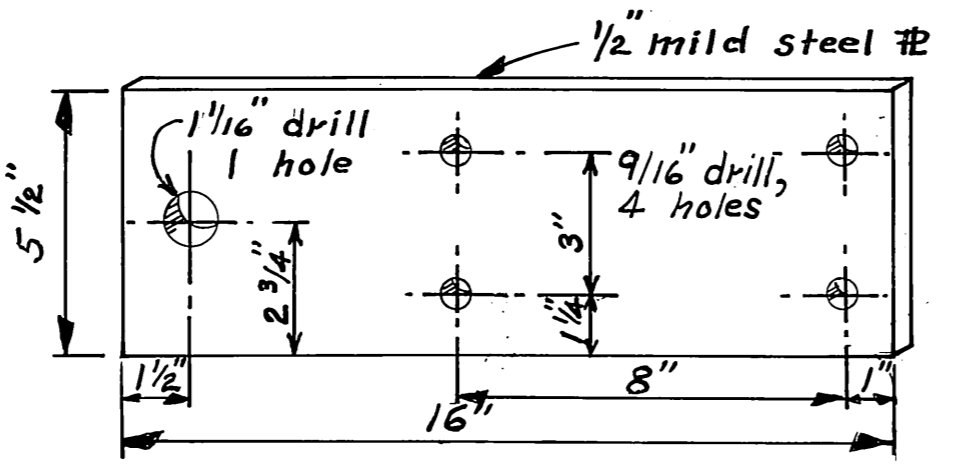


12' FLOAT STRINGER PLAN
Scale: 1" = 20'-0"

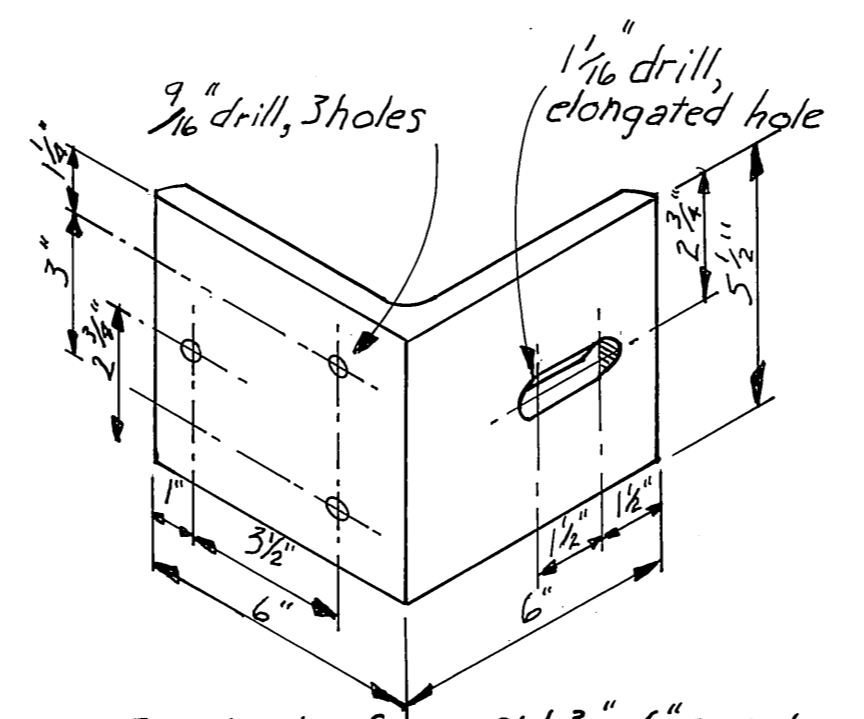


10' FLOAT STRINGER PLAN
Scale: 1" = 20'-0"

NOTE: Supplier cut 1st stringer 6" short at location shown

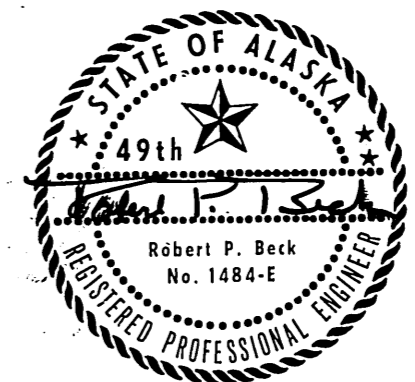


STANDARD PLATE DETAIL
3" = 1'-0"

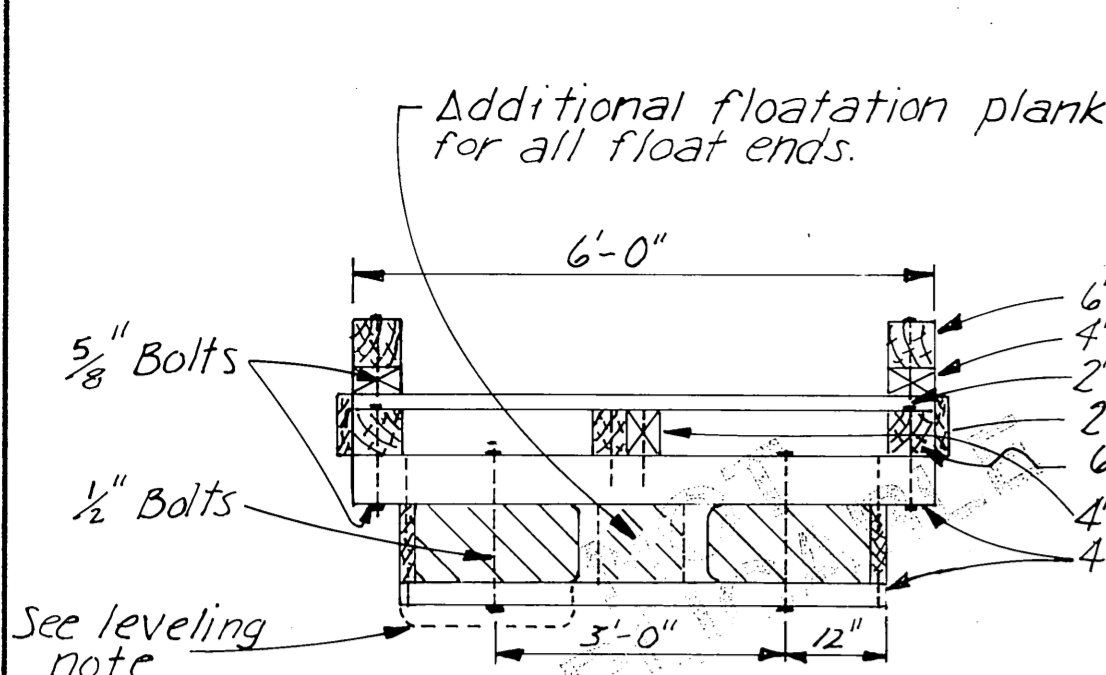


CLIP ANGLE DETAIL
3" = 1'-0"

AS-BUILT
Date 1-79
Division of Harbor Design and Construction

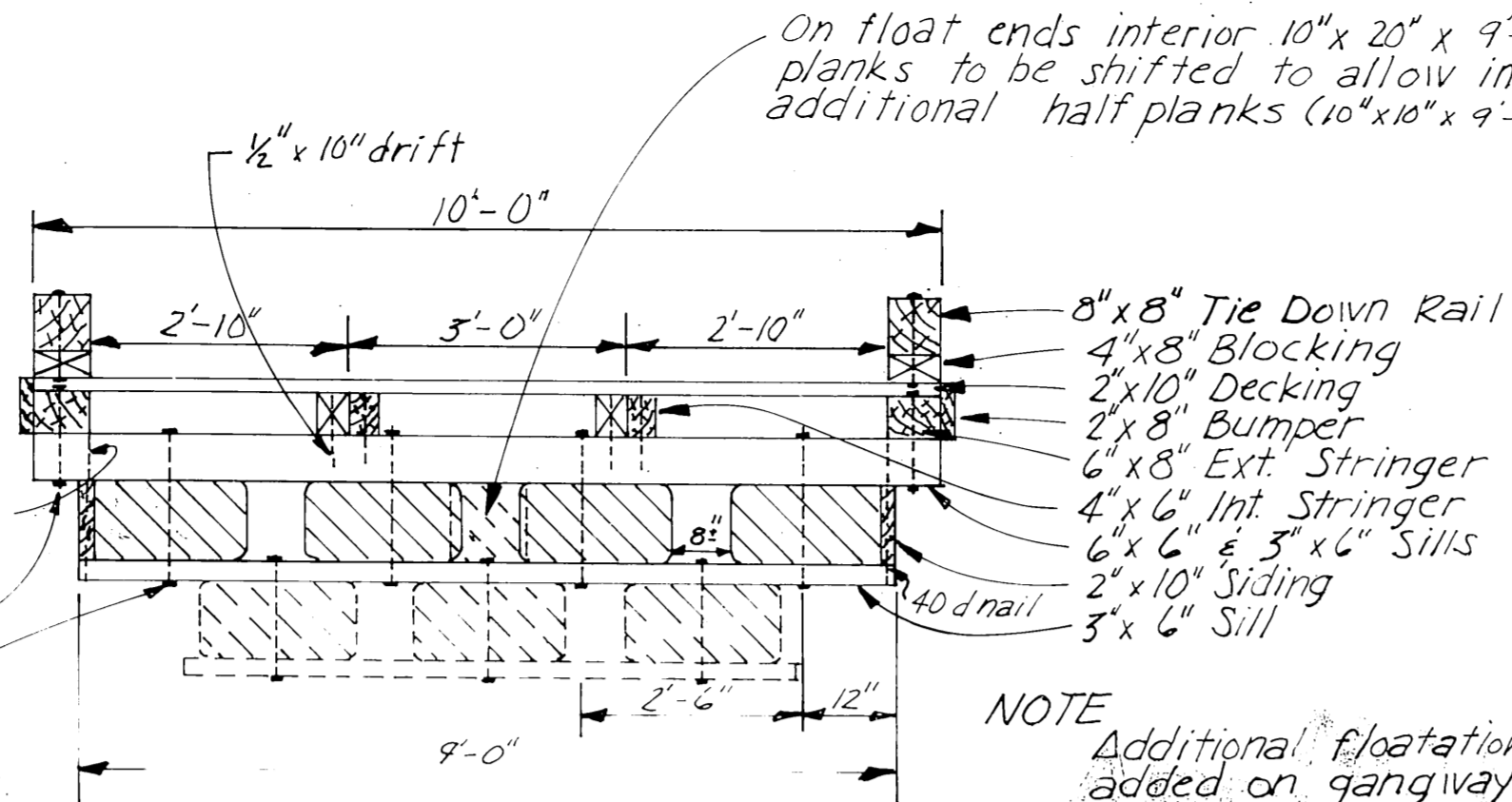


DO NOT SCALE THIS DRAWING - USE DIMENSIONS		
STATE OF ALASKA		
DIVISION OF HARBORS		
AUKU BAY, ALASKA		
STRINGER PLAN & MISCELLANEOUS DETAILS		
SCALE: As Shown	SURVEYED: Division	APPROVED:
DESIGNED: BMH	DRAWN: W.O.; BMH	Don Statter
CHECKED: PPB	DATE: 12-22-77	DIRECTOR
PROJECT NUMBER: 3-78101	SHEET 3 OF 4	

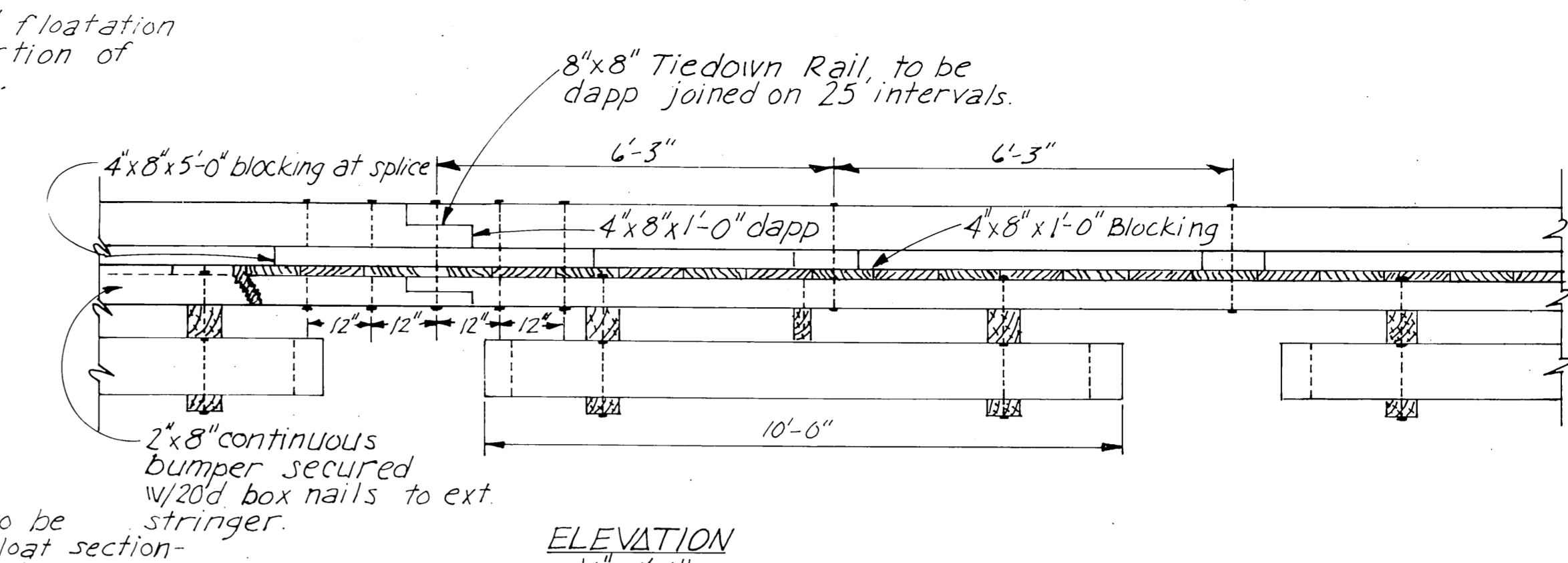


6' FLOAT SECTION
 1/2" = 1'-0"
 NOTE: 6' float construction shall conform to 10' float constr. except as noted.

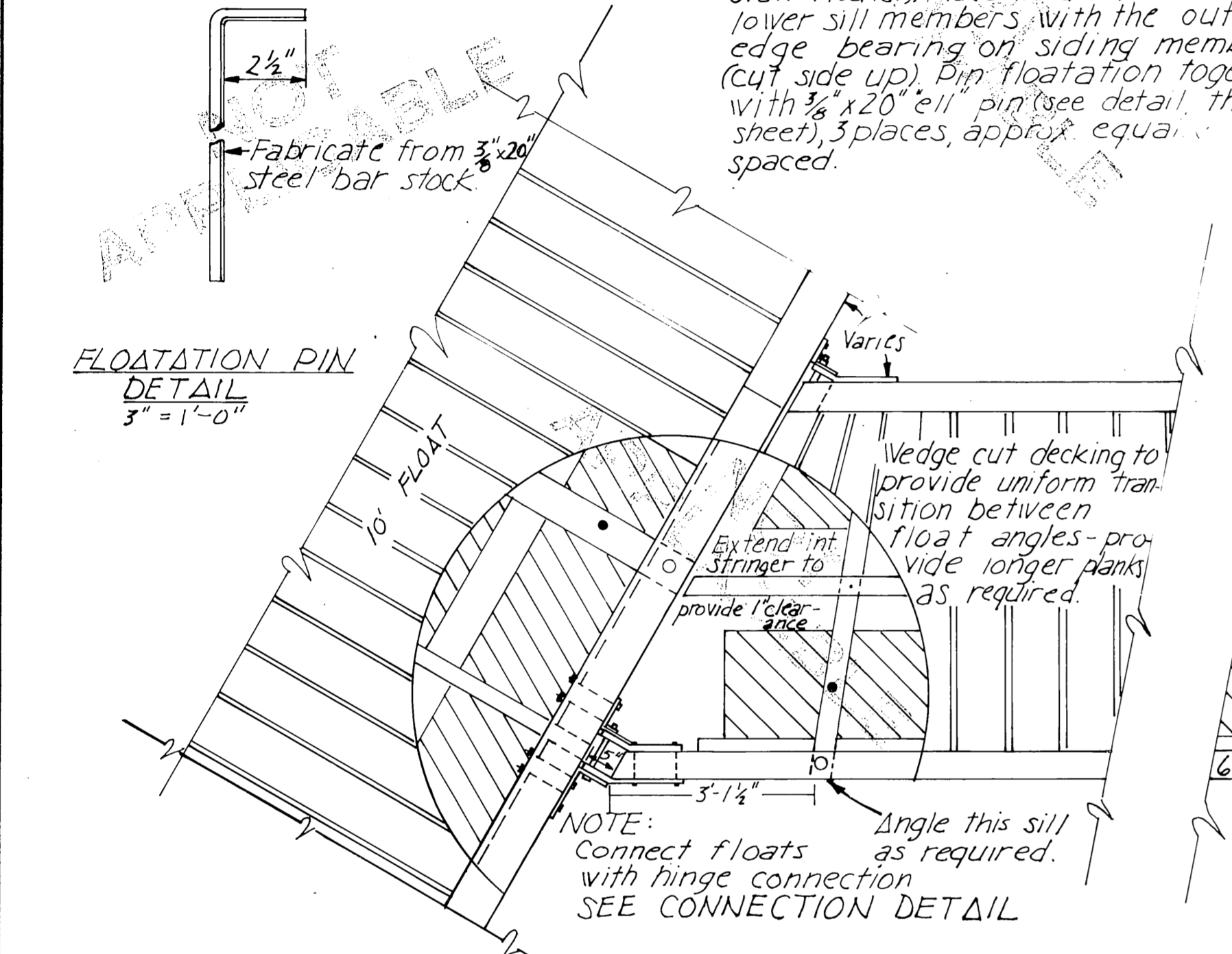
Level note
 5"x20"x4" leveling floatation shall be installed as directed by the Engr. (required on approx. 70% of the stall floats including 6' stall floats.) Place floatation between lower sill members with the outer edge bearing on siding members (cut side up). Pin floatation together with 3/8"x20" pin (see detail, this sheet), 3 places, approx. equal spaced.



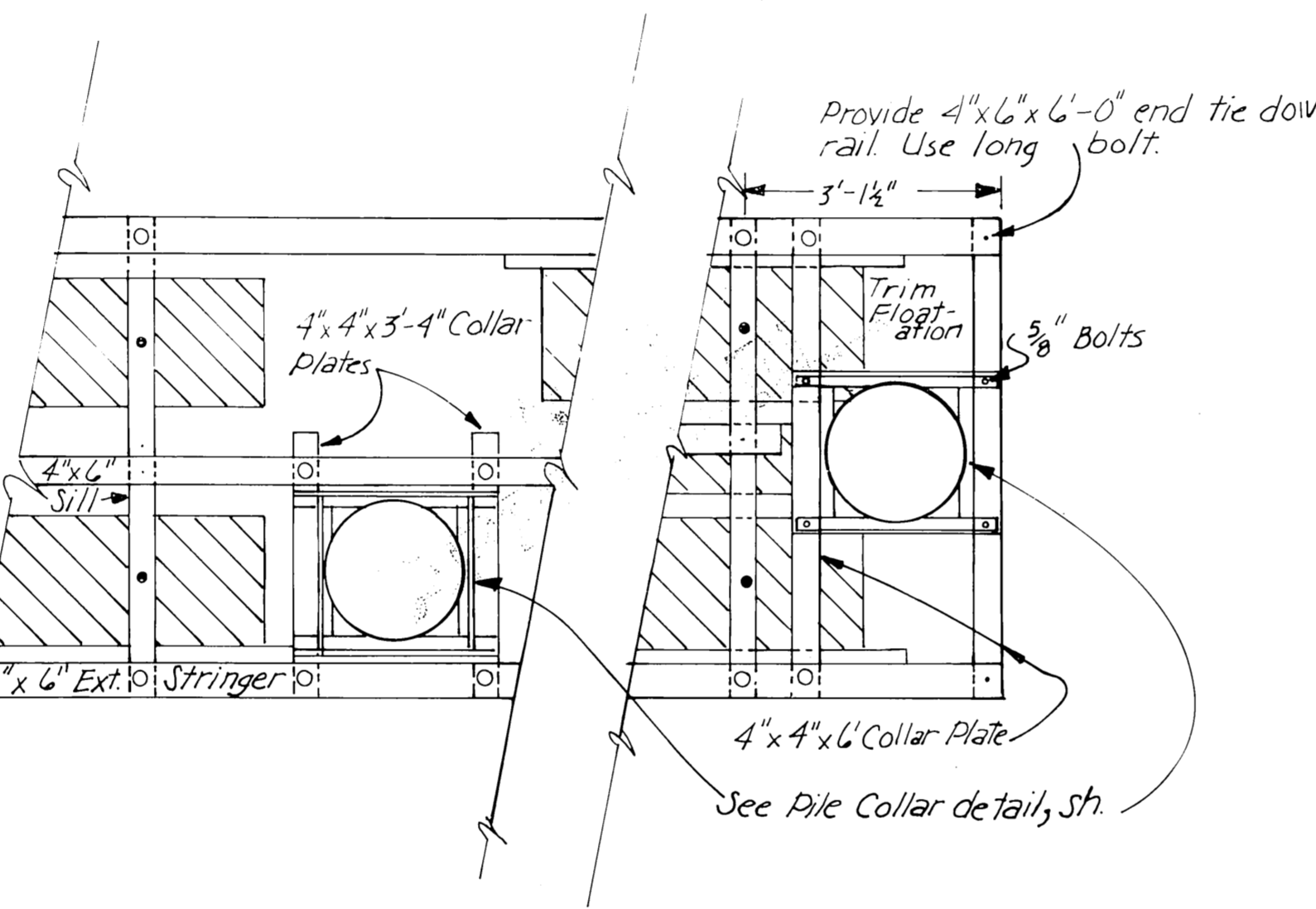
10' FLOAT SECTION
 1/2" = 1'-0"
 NOTE: Additional floatation to be added on gangway float section - 3 billets as shown, timber gangway - 2 for steel gangway.



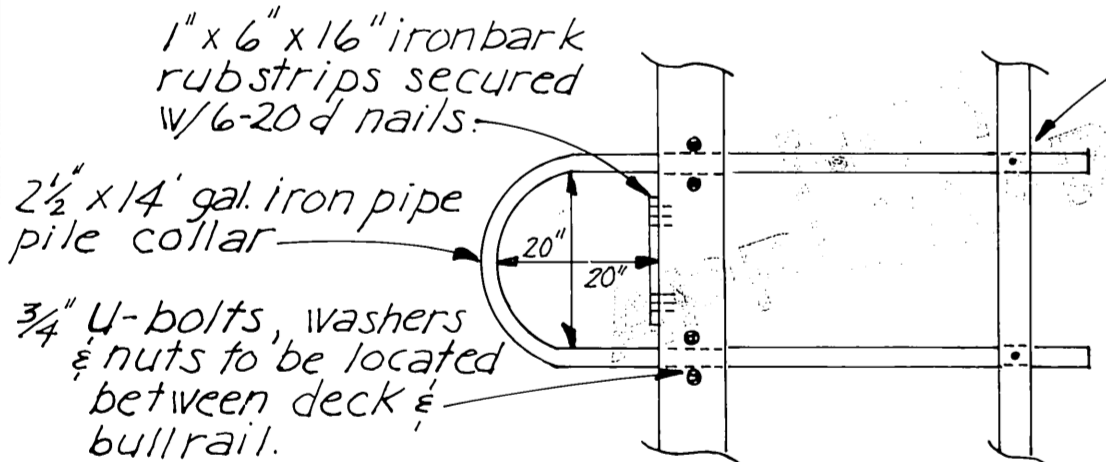
ELEVATION
 1/2" = 1'-0"



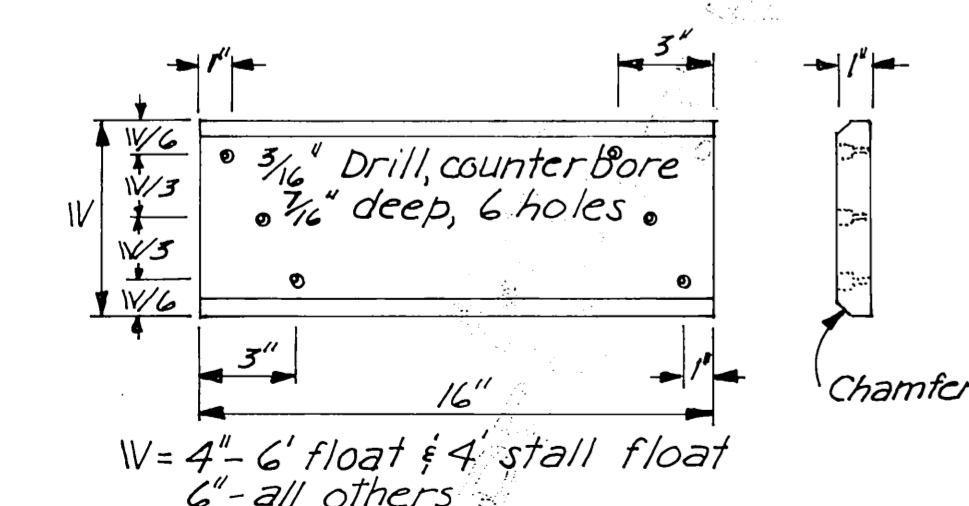
FLOATION PIN DETAIL
 3/8" = 1'-0"



CONNECTION & COLLAR DETAIL
 6' stall float 1/2" = 1'-0"



PIPE PILE COLLAR DETAIL
 1/2" = 1'-0"

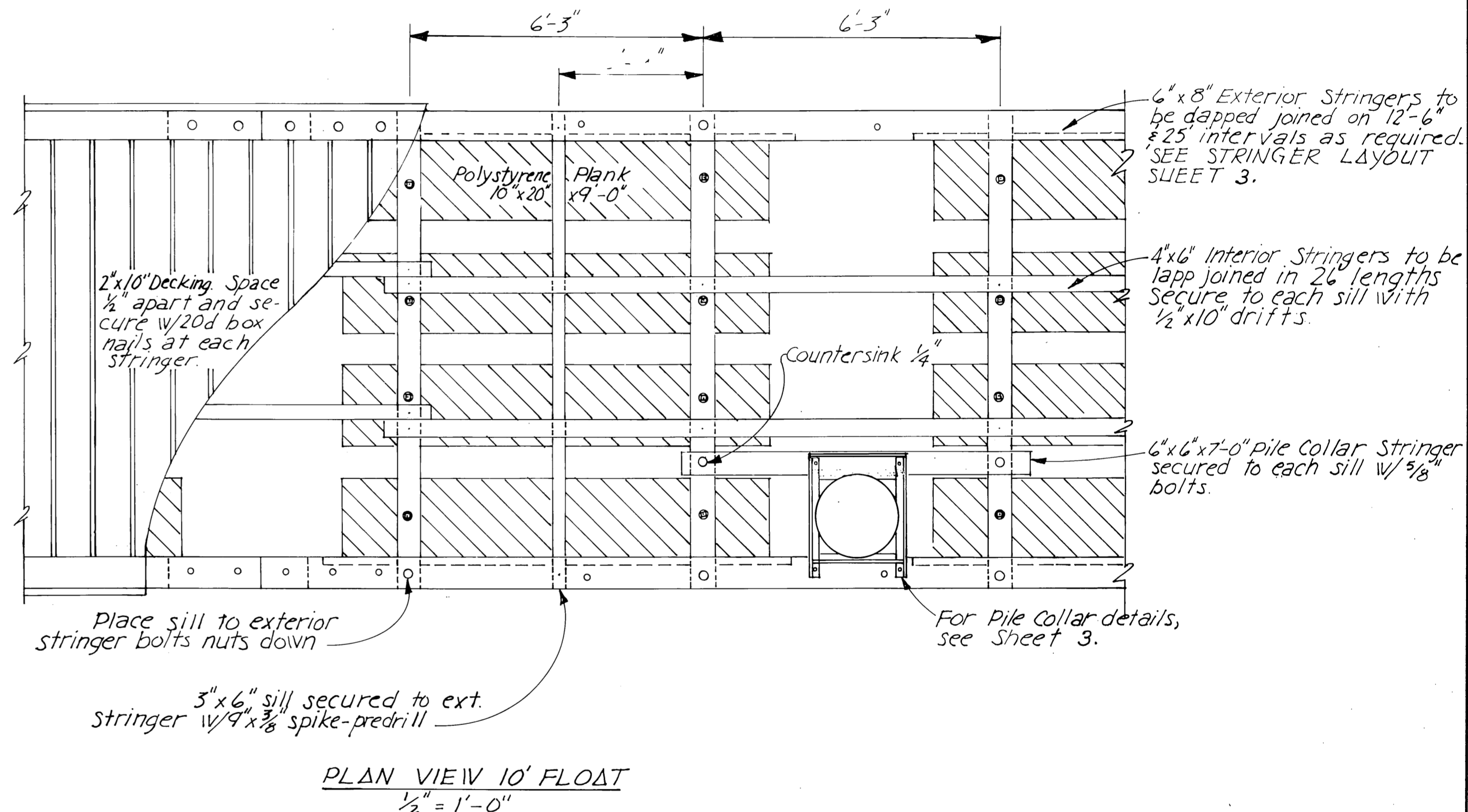


IRONBARK RUB STRIP
 1" = 6"

MATERIALS		
ITEM	DRESSING	TREATMENT
3"x6"-4"x6"-6"x6" upper sill	S-E 1/2" off	10lbs ret. (LP-55)
2"x10" siding	2"x10 1/2"	" " "
3"x6" lower sill	Rough	" " "
4"x4"-5"x6" collar plates	Rough	" " "
4"x6" collar members	S-2-E	" " "
4"x6" interior stringers	" " "	" " "
6"x6"-6"x8" ext stringers	S-4-S	" " "
6"x6" Collar Stringers	" " "	10 lb. Ret. (LP-55)
2"x10" decking	Milled	0.4 lb. Penta.
4"x6"-4"x8" blocking	S-4-S	" " "
6"x6"-8"x8" Rail	" " "	" " "
2"x8" bumpers	" " "	0.4 lb. Penta.

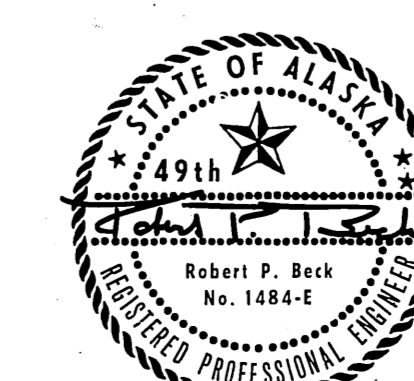
PRE-DRILLED BOLT HOLES
 COLLAR MEMBERS - all holes.
 SILLS - holes for floatation plank bolts.
 STRINGERS - 1. holes for stringer to sill bolts.
 TIE DOWN RAIL - all holes
 PILE COLLAR STRINGER - 10' FLOAT - all holes.
FIELD DRILLED BOLT HOLES
 SILLS - 1. holes for stringer to sill bolts.
 2. pile collar stringer to sill.
 PILE COLLAR INT. STRINGER - 6' FLOAT - all holes.
 RAIL BLOCKING - all holes.
 COLLAR PLATES - all holes.
 EXT. STRINGER - 1. holes for tiedown rail bolts.
 2. holes for pile collar plate bolts.

NOTES
 All hardware to be hot-dipped galvanized. Δ Malleable iron washer shall be placed between all nut and wood surfaces. All bolts to be of the economy headed type. Bolt holes to be drilled 1/16" oversize except sill bolt holes for floatation planks 1/8" oversize. Drift holes to be drilled 1/4" under size. Δ All field drill holes shall be treated with hot creosote oil. All pressure treated creosote material shall be cut to size prior to treatment. Tiedown rails shall extend across all float ends, except under gangway. All bolt heads facing decking shall be countersunk 1/4" previous to treatment. Field drill all drift bolt holes. Δ barrier of 6 mil black polyethylene shall be placed between the contact surfaces of all creosote timber and floatation material (except float siding members).



PLAN VIEW 10' FLOAT
 1/2" = 1'-0"

AS-BUILT
 Date: 1-79
 Division of Harbor Design and Construction



DO NOT SCALE THIS DRAWING - USE DIMENSIONS

STATE OF ALASKA
 DIVISION OF HARBORS
 ALASKA

TYPICAL FLOATS

SCALE: AS SHOWN
 DESIGNED: DIV/DS
 CHECKED: _____
 PROJECT NUMBER: 3-78101

SURVEYED: _____
 DRAWN: 7M
 DATE: 1/23/77

APPROVED: **Don Statter**
 DIRECTOR

SHEET 4 OF 4