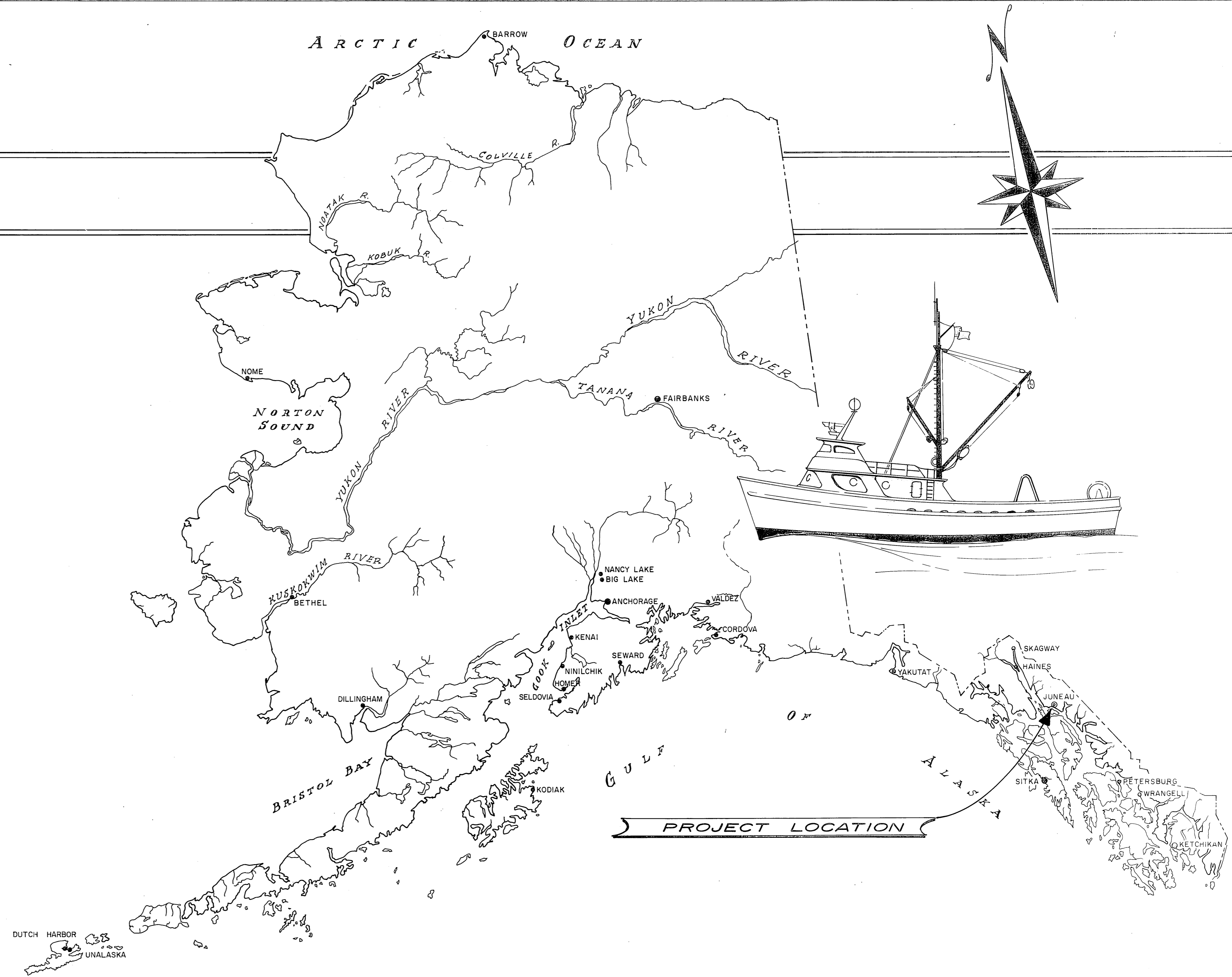


HARRIS HARBOR LAUNCHING RAMP

PROJECT NO. 3-75145

NORTH DOUGLAS LAUNCHING RAMP

PROJECT NO. 3-75138



WORK SUMMARY

HARRIS HARBOR

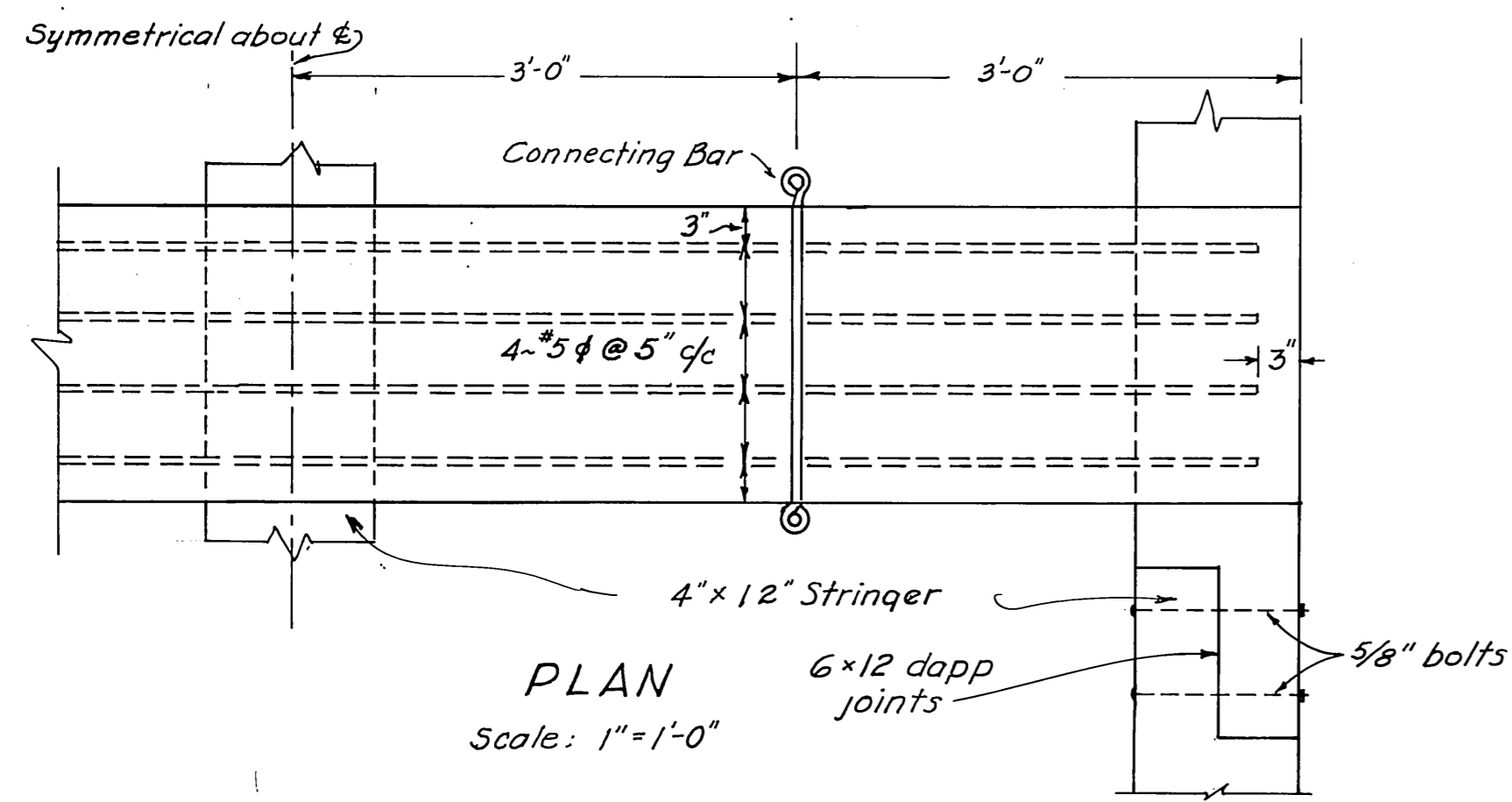
Project consists of repairing the existing launching ramp and installing approx. 55 new concrete planks at Harris Harbor. (50 state furnished)

NORTH DOUGLAS

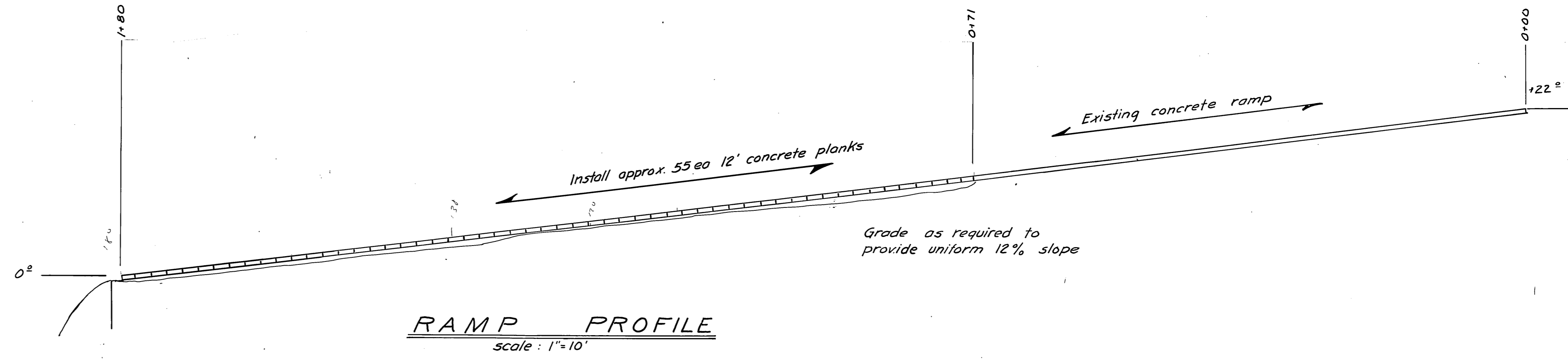
Project consists of furnishing and installing approx. 82 concrete ramp planks, filling and grading of parking area and furnishing and installing rip rap slope protection.

INDEX TO SHEETS	
1	Title Sheet
2	Harris Harbor Plans & Details
3	North Douglas Plan
4	North Douglas Details

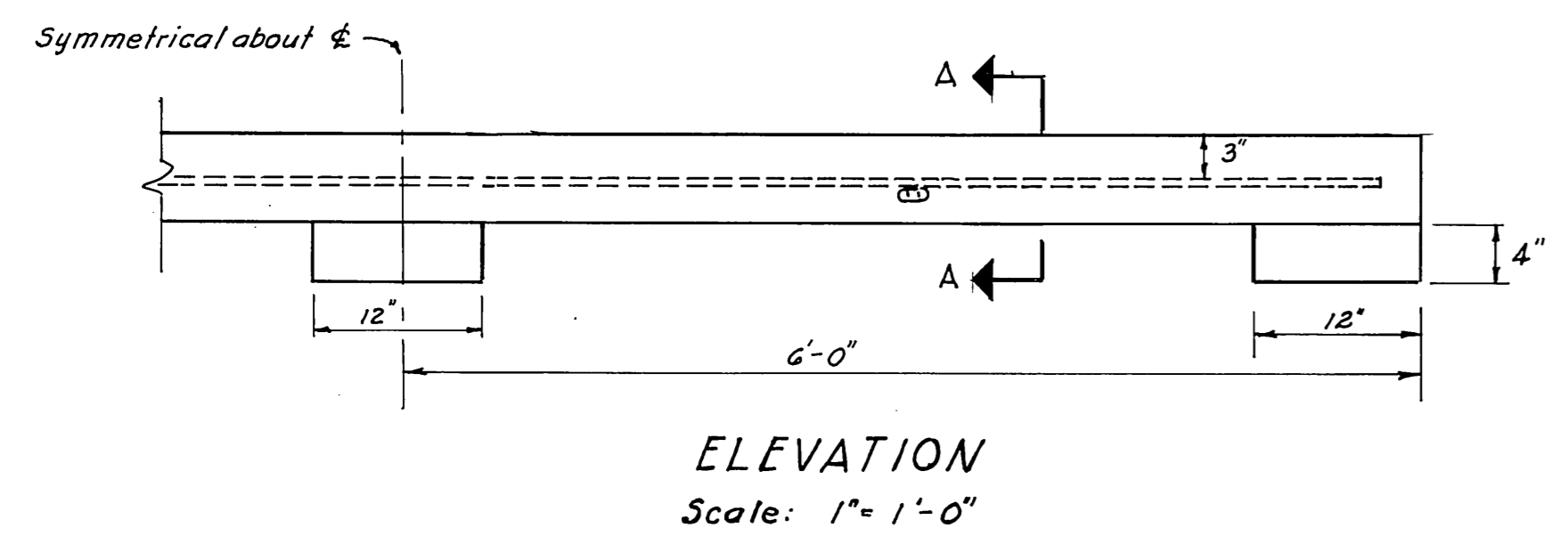
APPROVED _____
 DIRECTOR _____
 DATE _____
 SHEET 1 4



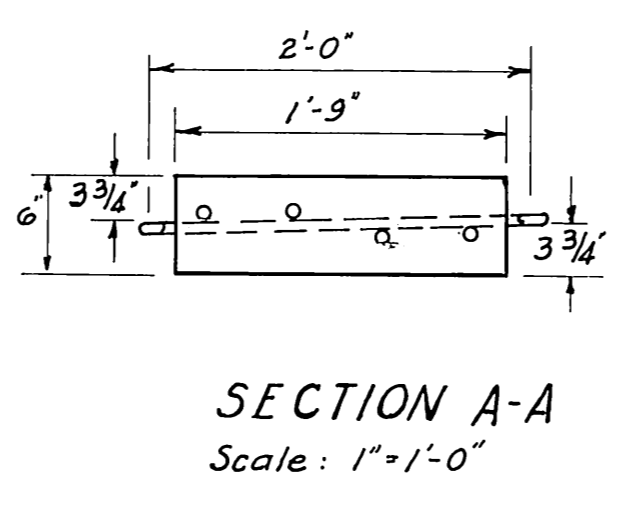
PLAN
Scale: 1"=1'-0"



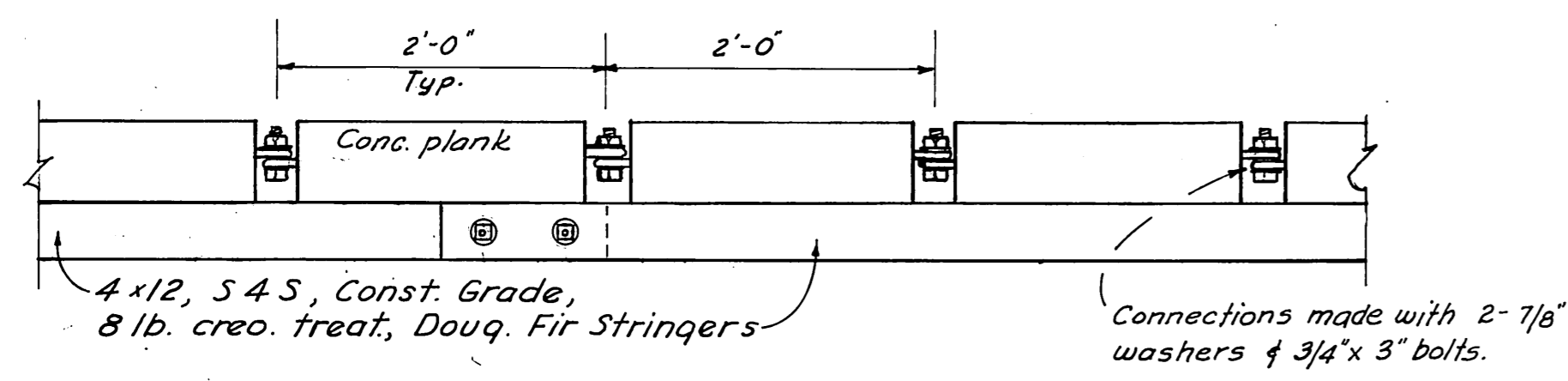
RAMP PROFILE
scale: 1"=10'



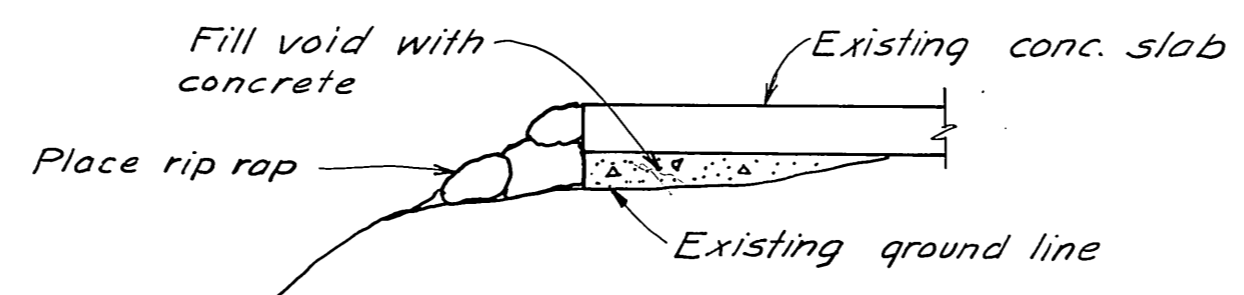
ELEVATION
Scale: 1"=1'-0"



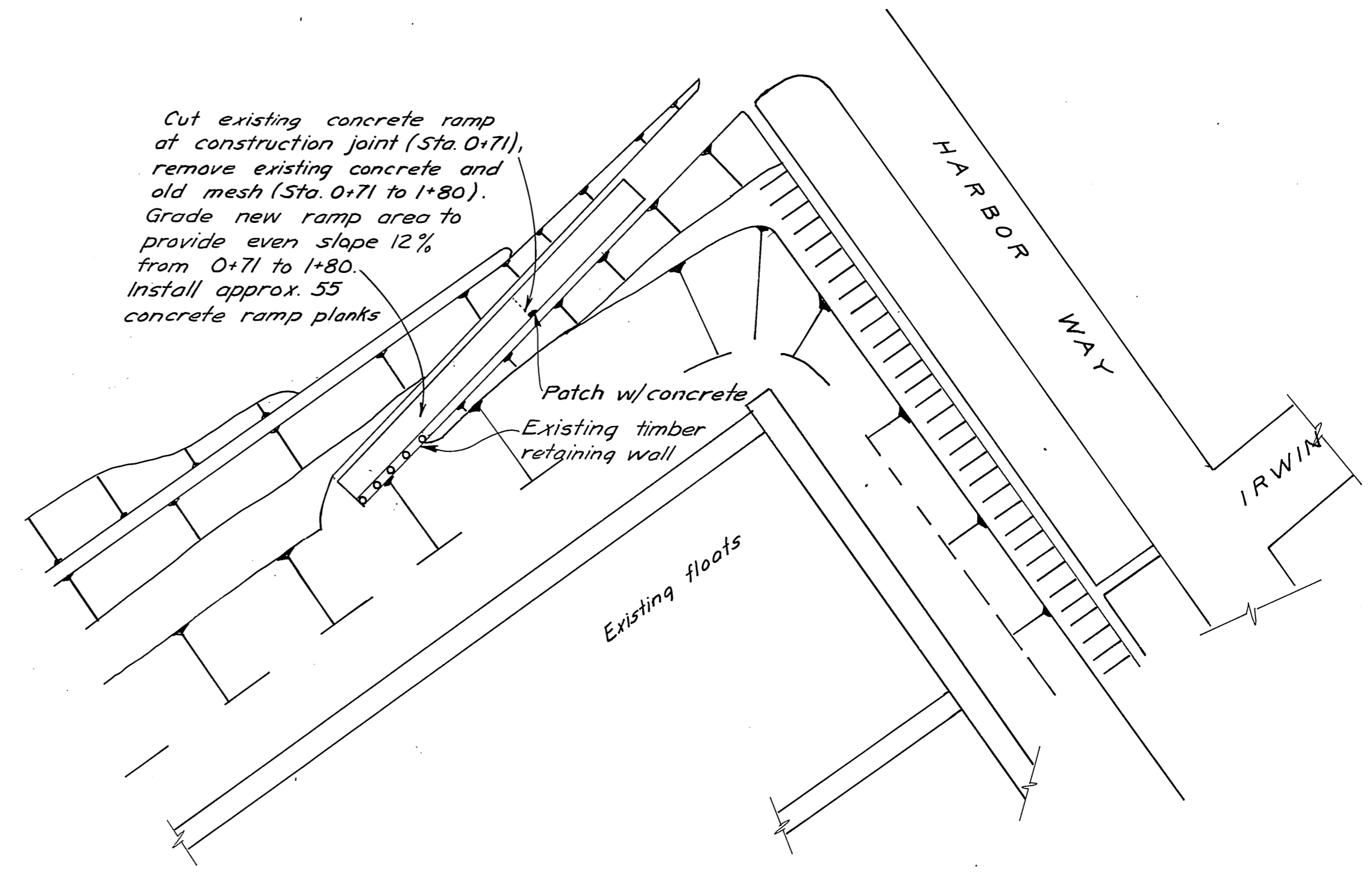
SECTION A-A
Scale: 1"=1'-0"



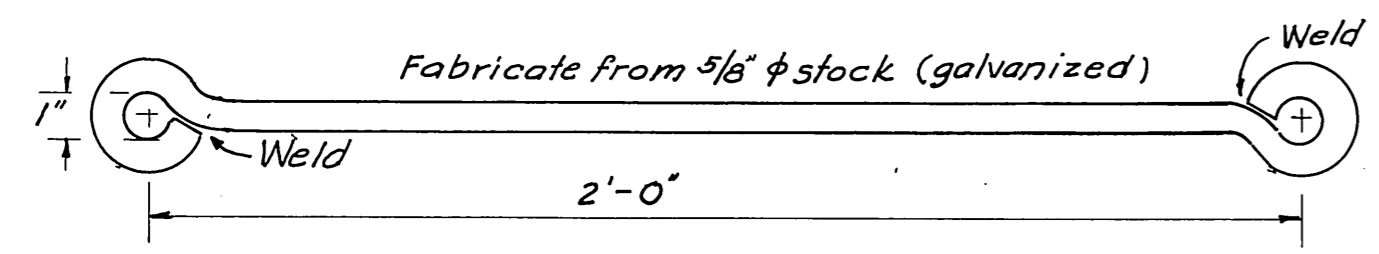
TYPICAL ASSEMBLY
Scale: 1"=1'-0"



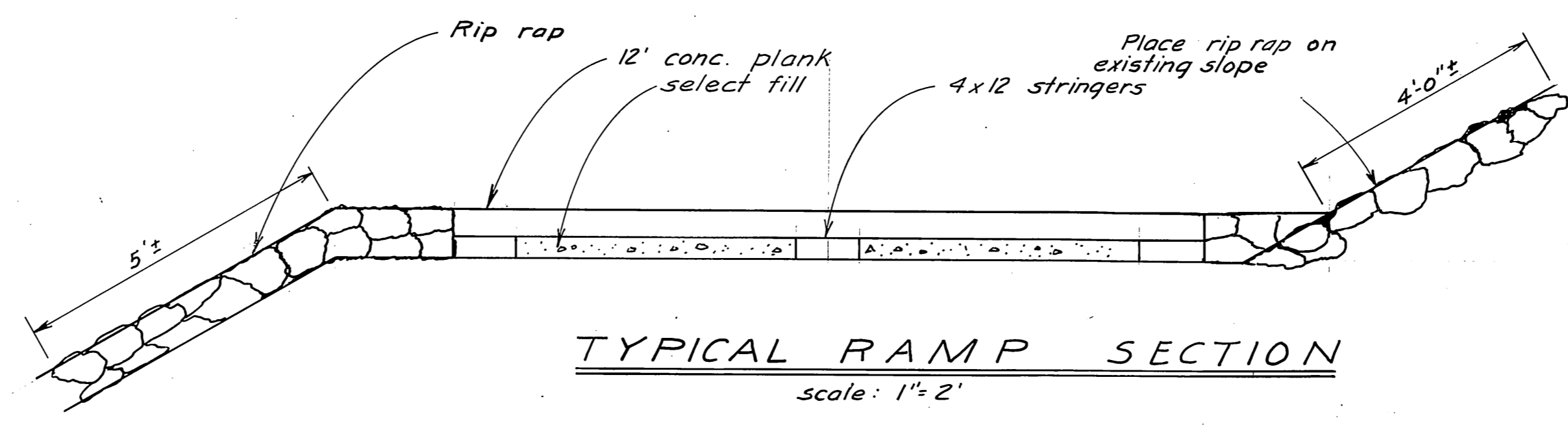
TYPICAL RAMP SECTION
0+00 to 0+71
scale: 1"=2'



HARRIS HARBOR LAUNCHING RAMP



TYPICAL CONNECTING BAR
Scale: 3"=1'-0"

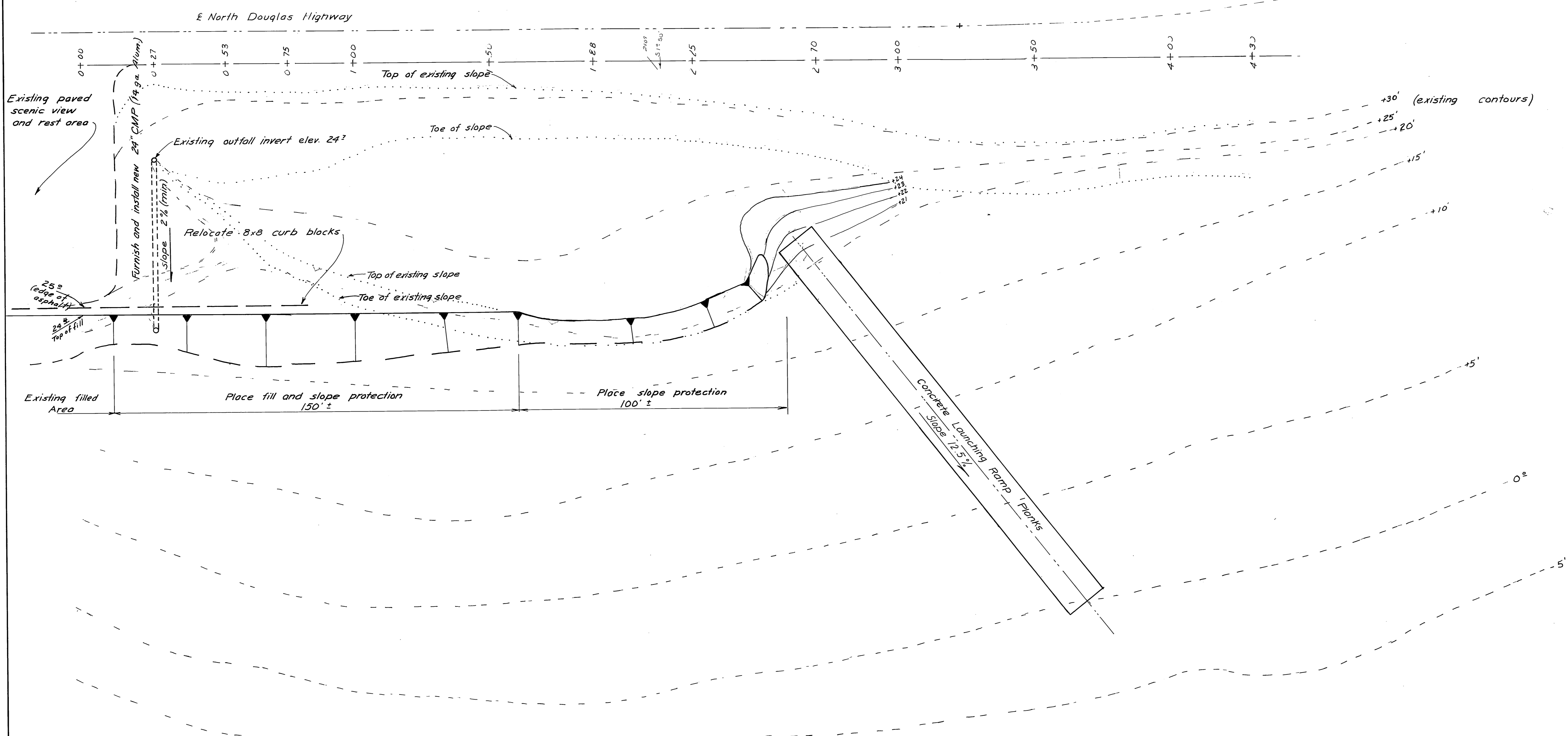


TYPICAL RAMP SECTION
scale: 1"=2'

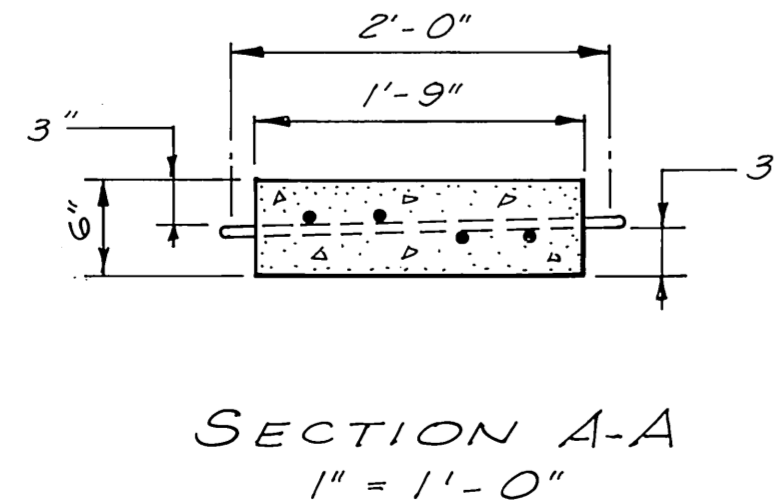
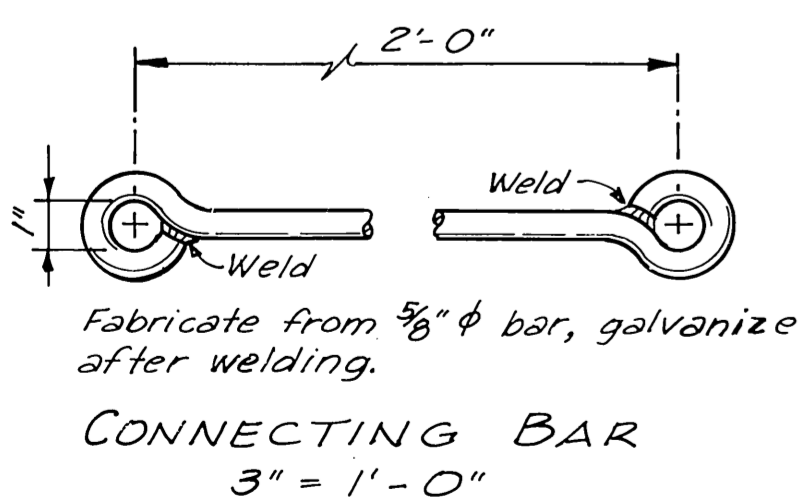
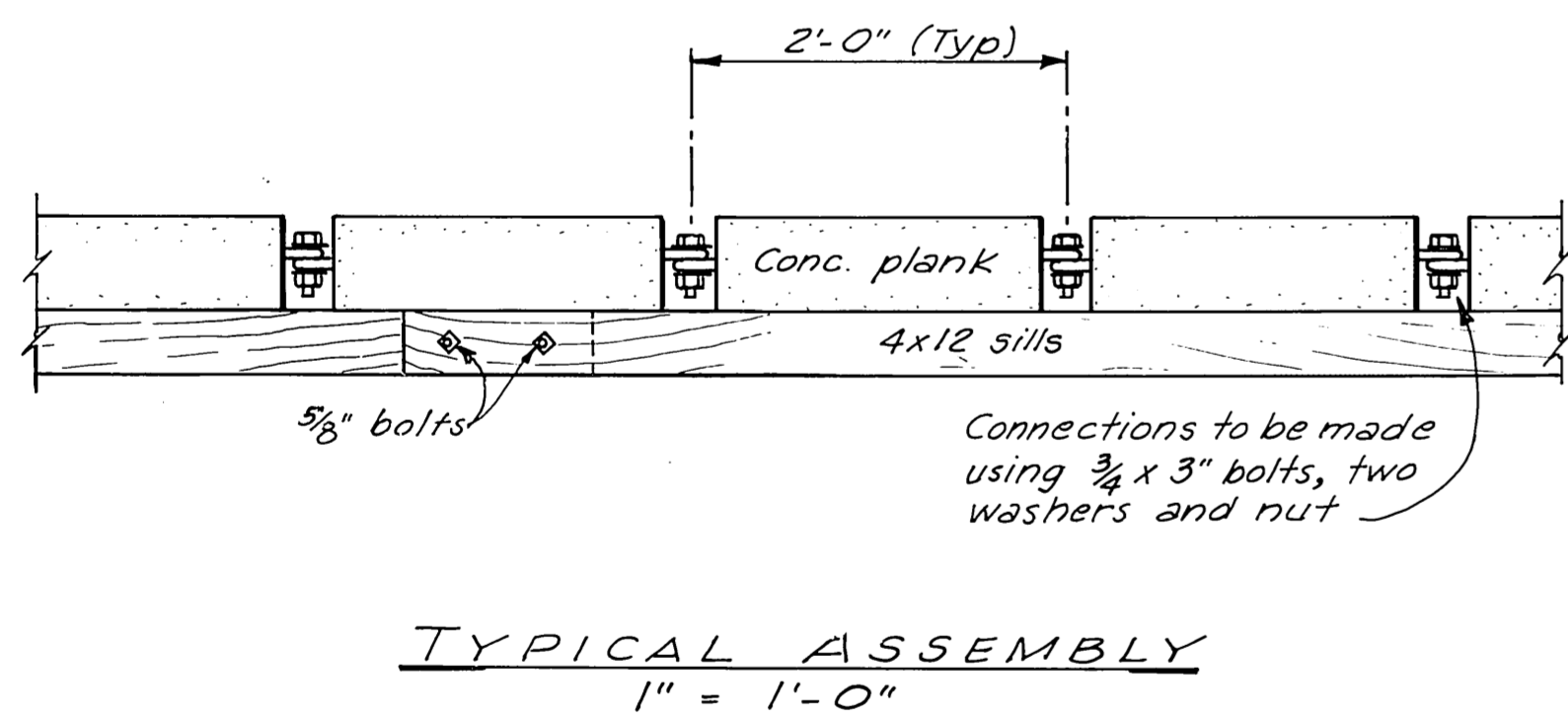
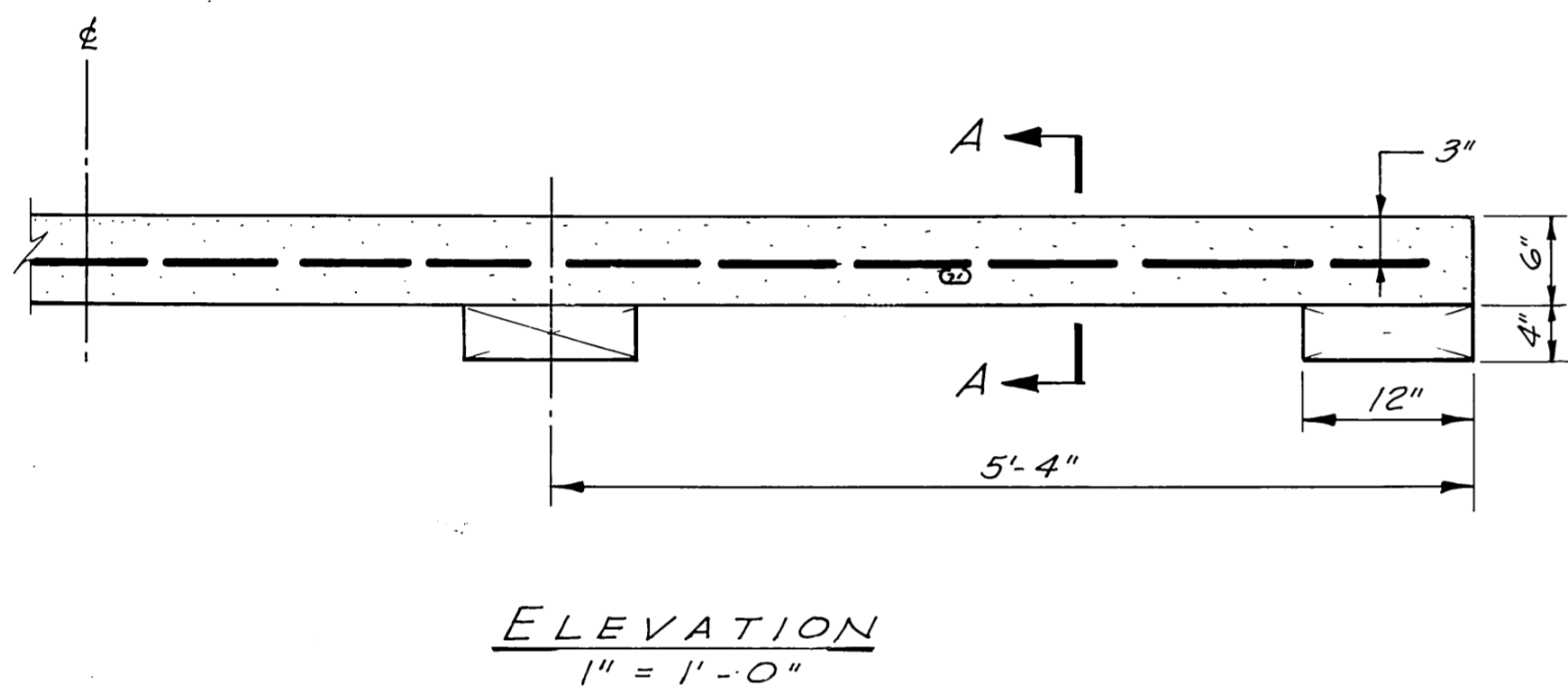
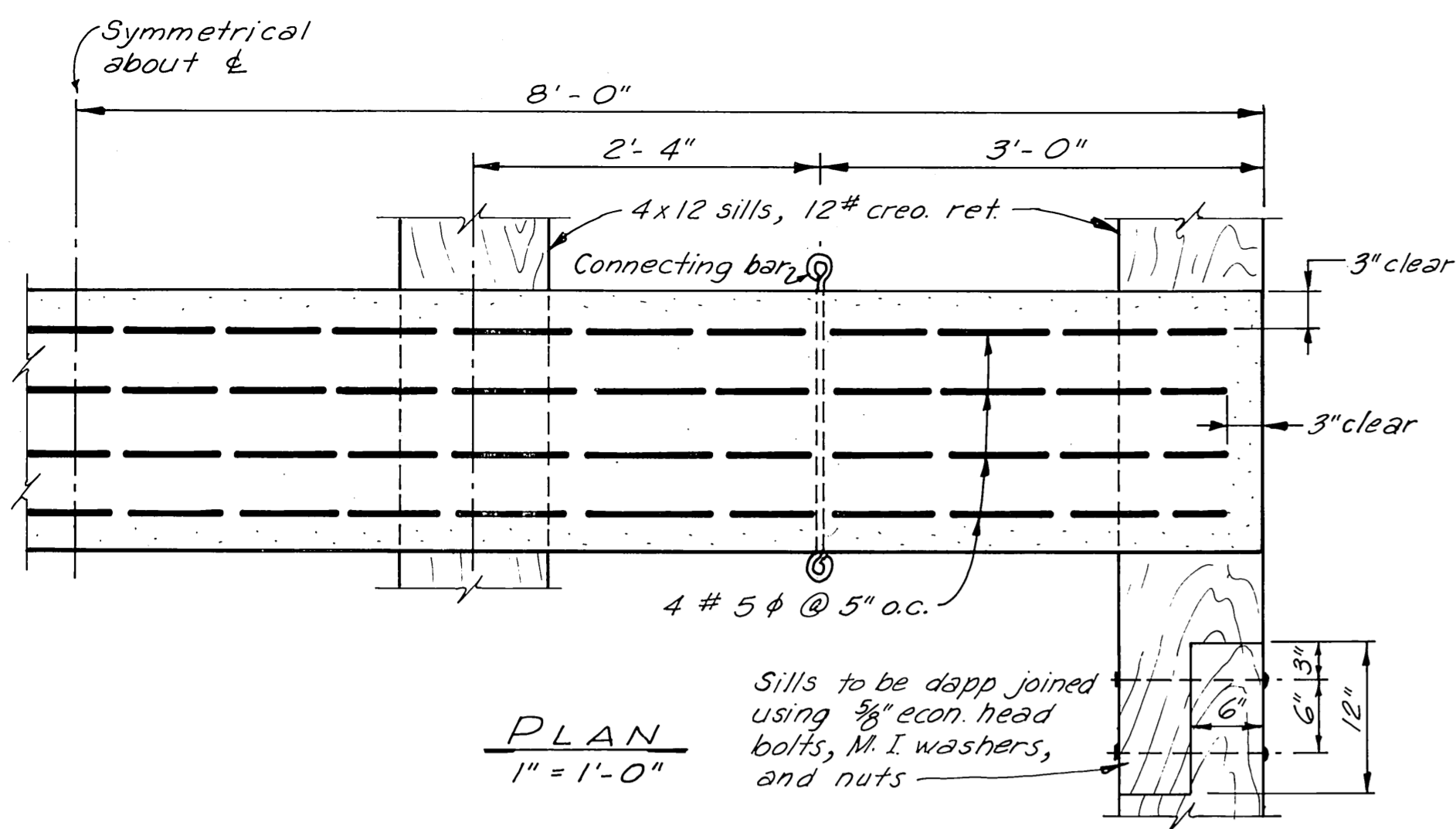
DETAILS - CONCRETE LAUNCHING RAMP PLANKS

DO NOT SCALE THIS DRAWING - USE DIMENSIONS		
STATE OF ALASKA DEPARTMENT OF PUBLIC WORKS DIVISION OF WATER AND HARBORS		
HARRIS HARBOR DETAILS - CONCRETE LAUNCHING RAMP		
SCALE AS SHOWN	SURVEYED	APPROVED
DESIGNED	DRAWN P. R. S.	DON STATTER
CHECKED	DATE	DIRECTOR
PROJECT NUMBER 3-75145		SHEET 2 OF 4

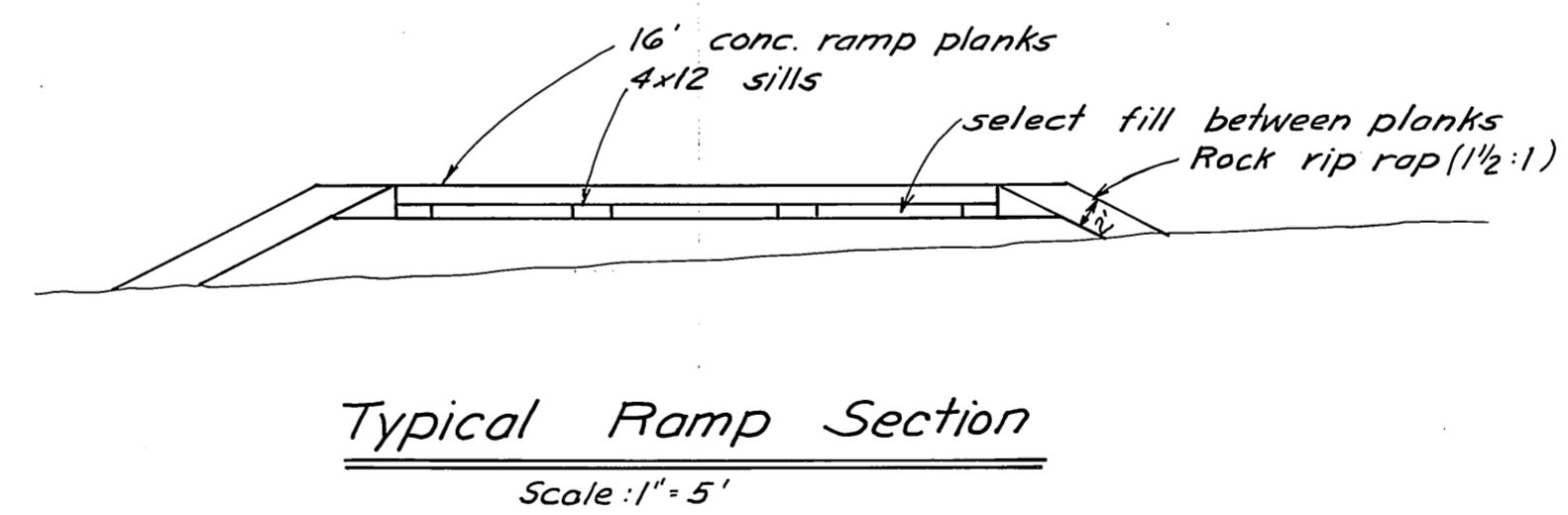
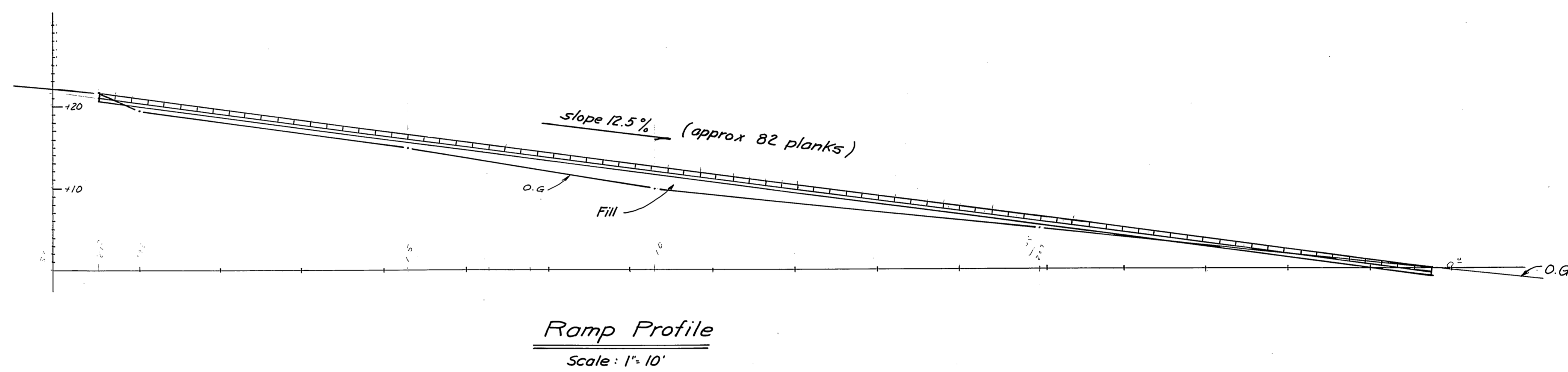
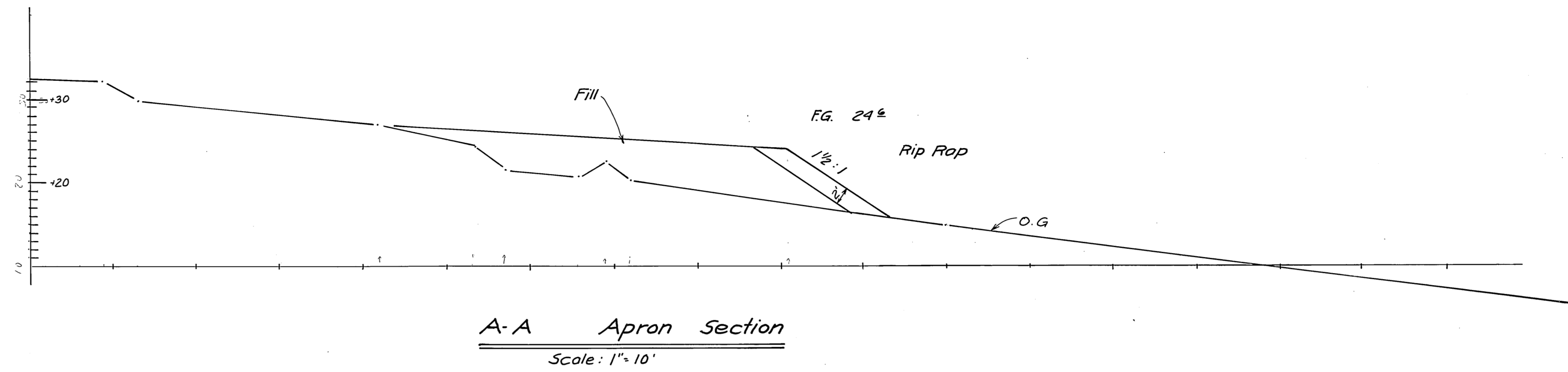
P.C. Mon. Elev. = 31.05



DO NOT SCALE THIS DRAWING - USE DIMENSIONS		
STATE OF ALASKA DEPARTMENT OF PUBLIC WORKS DIVISION OF WATER AND HARBORS		
North Douglas Launching Ramp		
SCALE 1" = 20'	SURVEYED <i>MMW</i>	APPROVED
DESIGNED <i>HM</i>	DRAWN <i>HM</i>	<i>Don Statter</i> DIRECTOR
CHECKED	DATE <i>June 74</i>	
PROJECT NUMBER 3-75/38	SHEET 3 OF 4	



DETAILS - PRECAST LAUNCHING RAMP PLANKS



DO NOT SCALE THIS DRAWING - USE DIMENSIONS		
STATE OF ALASKA DEPARTMENT OF PUBLIC WORKS DIVISION OF WATER AND HARBORS		
NORTH DOUGLAS DETAILS CONCRETE LAUNCHING RAMP		
SCALE As noted	SURVEYED	APPROVED
DESIGNED HM	DRAWN JET	Don Statter DIRECTOR
CHECKED	DATE July 74	
PROJECT NUMBER 3-75138	SHEET 9 OF 9	