

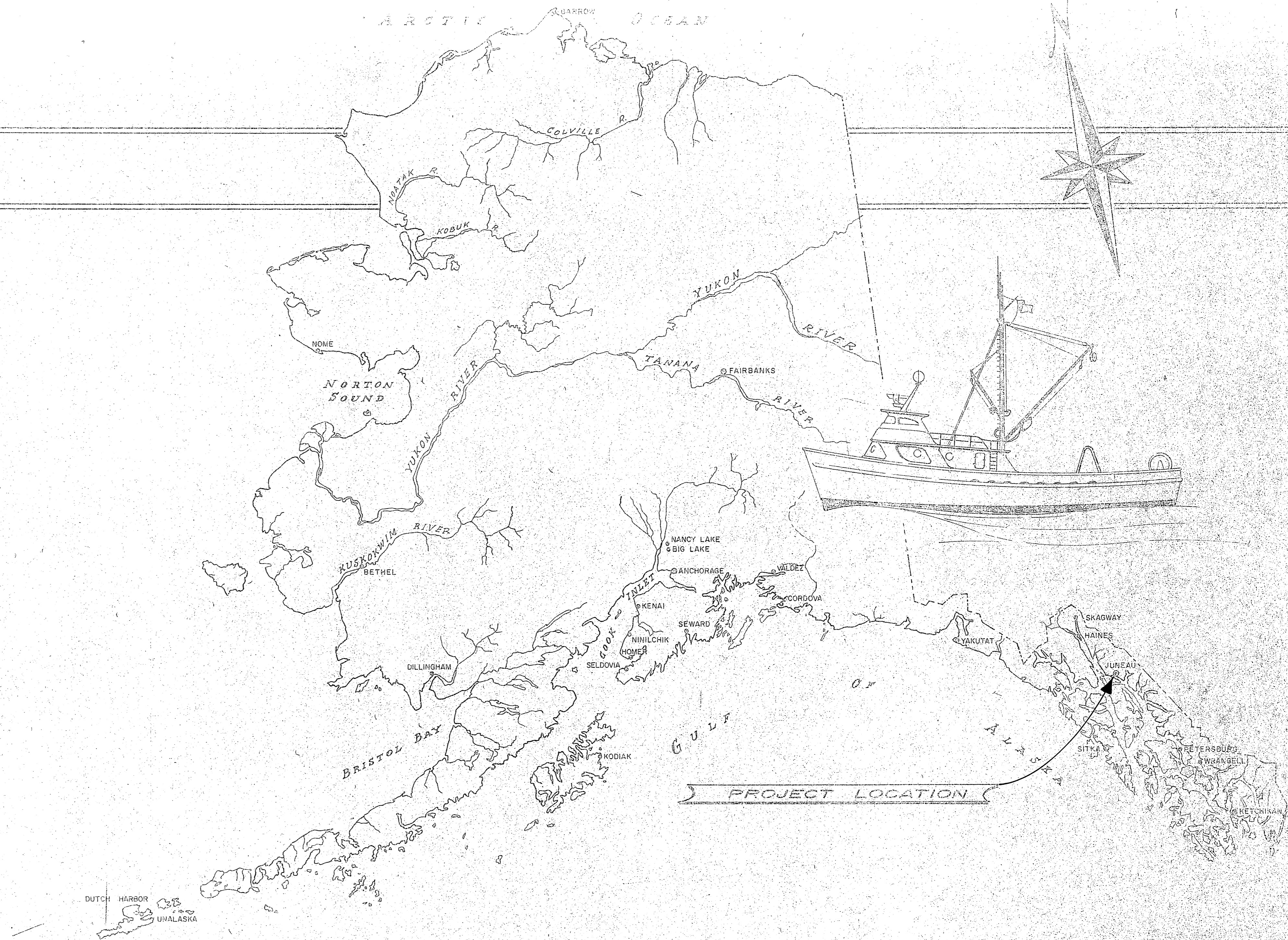
HARRIS HARBOR LAUNCHING RAMP

PROJECT NO. 3-75145

NORTH DOUGLAS LAUNCHING RAMP

PROJECT NO. 3-75138

SEE HARRIS HARBOR FOR MYLARS



HARRIS HARBOR

WORK SUMMARY

Project consists of repairing the existing launching ramp and installing approx. 55 new concrete planks at Harris Harbor. (50 state furnished)

NORTH DOUGLAS

Project consists of furnishing and installing approx. 82 concrete ramp planks, filling and grading of parking area and furnishing and installing rip rap slope protection.

STATE OF ALASKA — DEPARTMENT OF PUBLIC WORKS
 DIVISION OF WATER & HARBORS

INDEX TO SHEETS

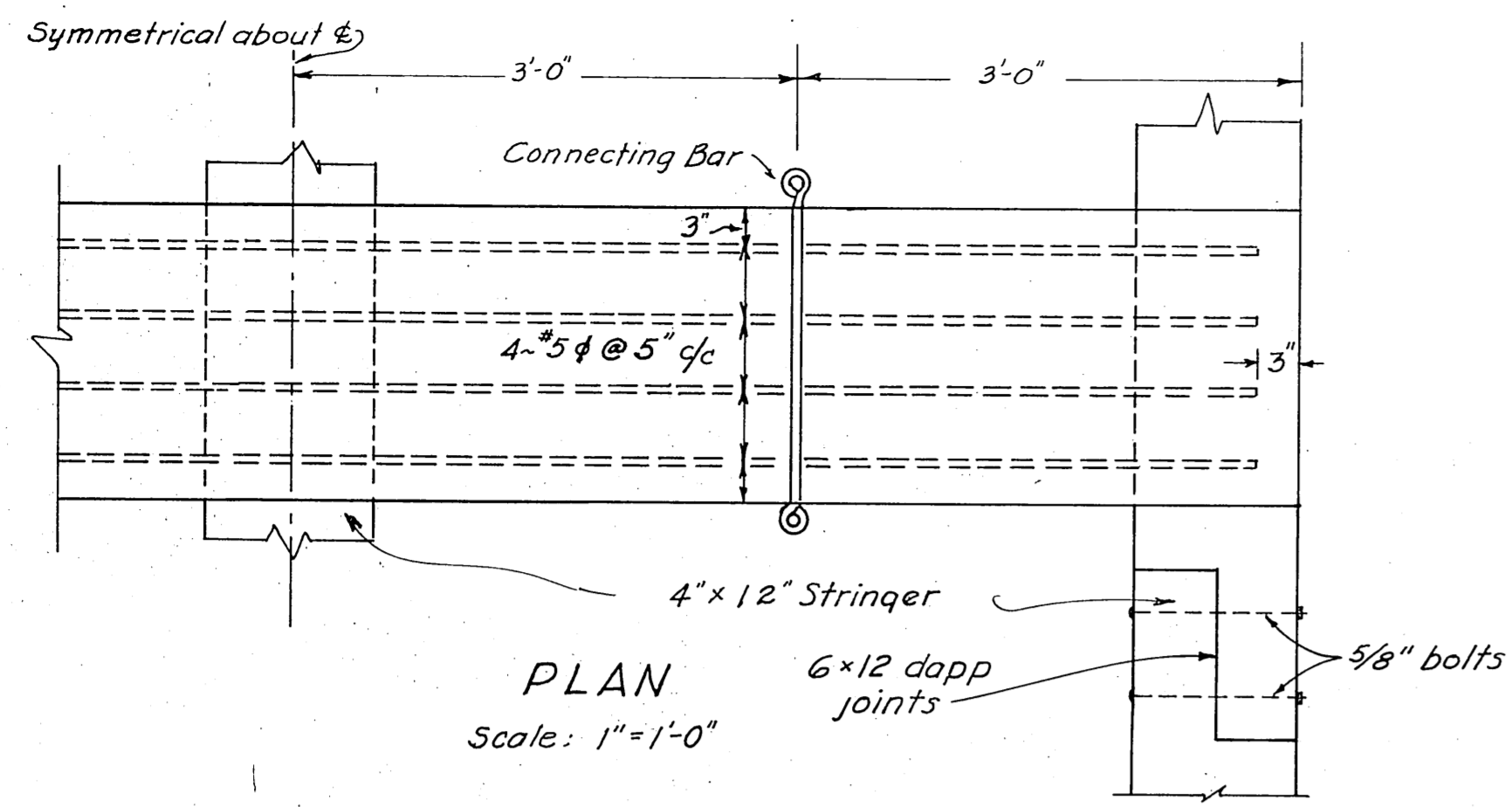
1	Title Sheet		
2	Harris Harbor Plans & Details		
3	North Douglas Plan		
4	North Douglas Details		

APPROVED

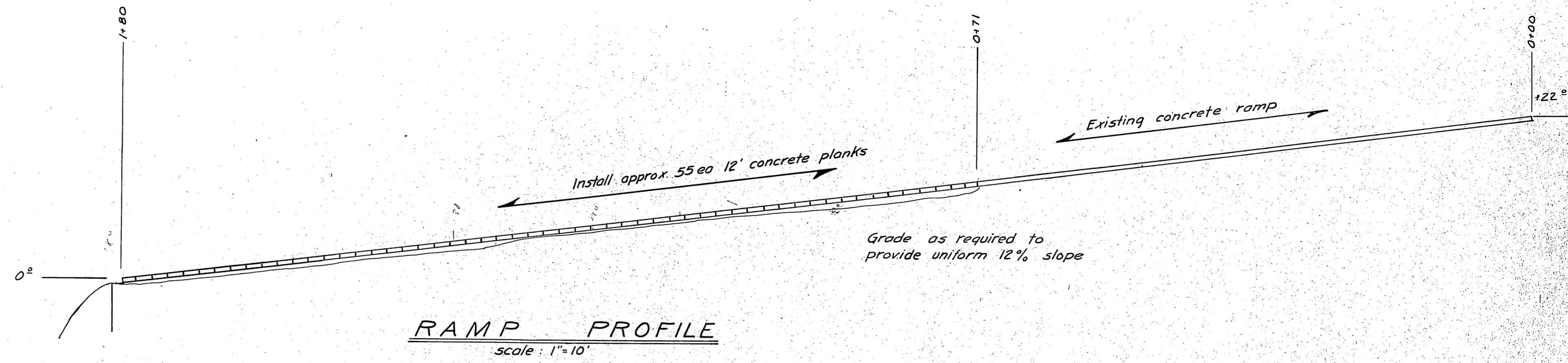
DIRECTOR

DATE

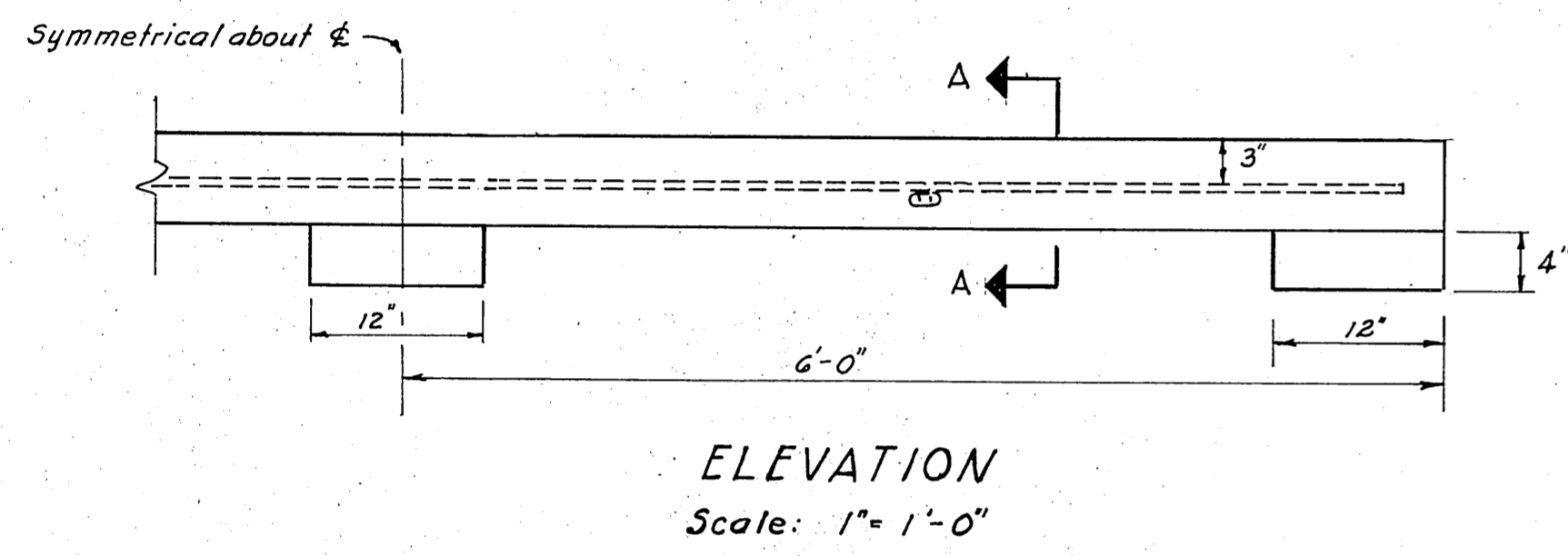
SHEET 1 OF 4



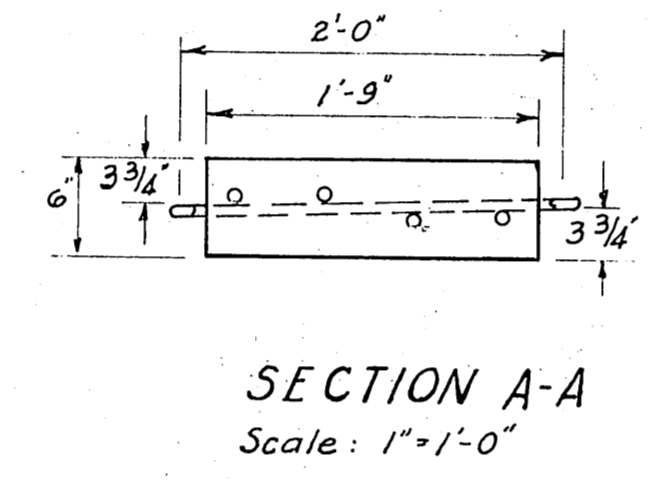
PLAN
Scale: 1"=1'-0"



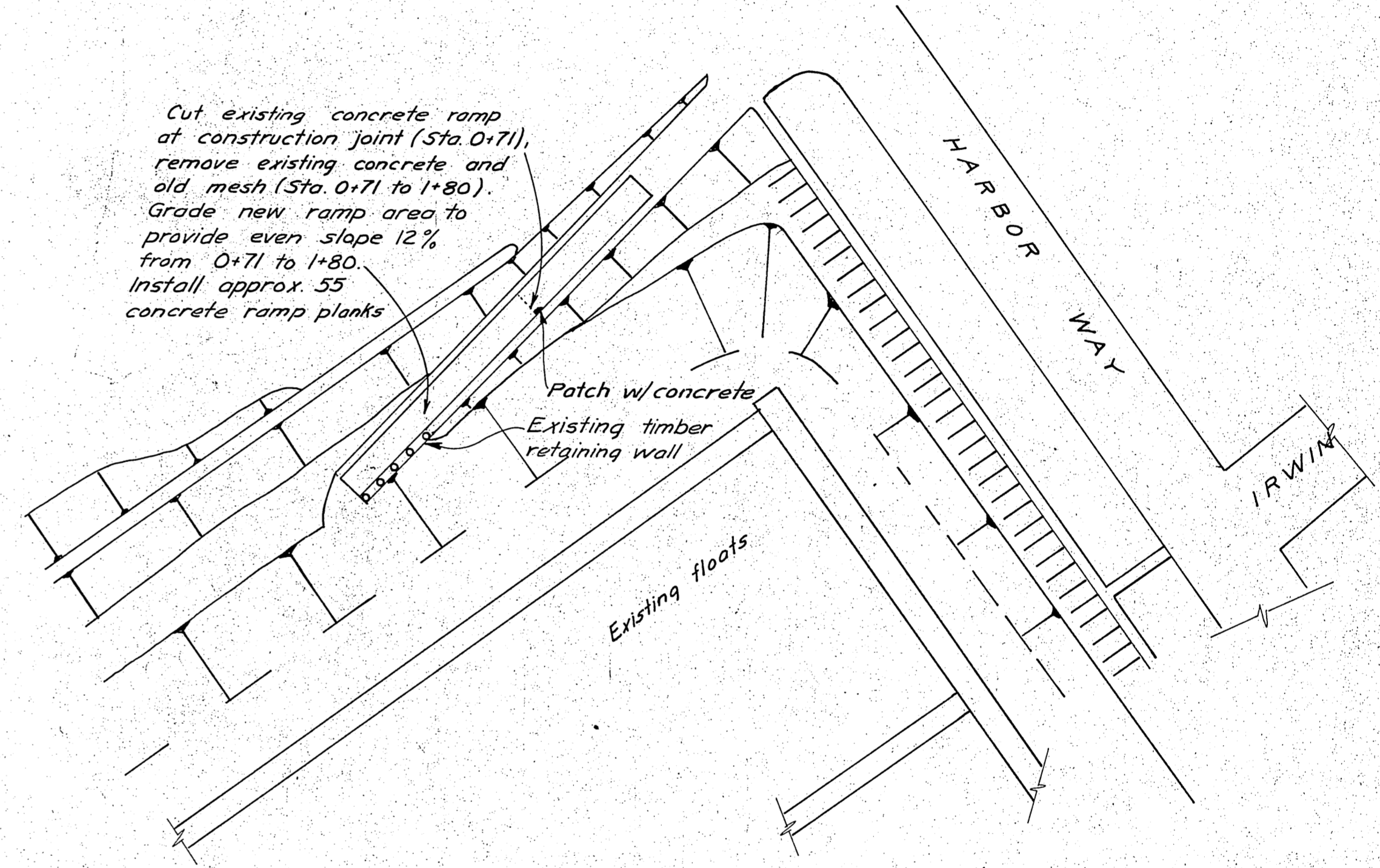
RAMP PROFILE
scale: 1"=10'



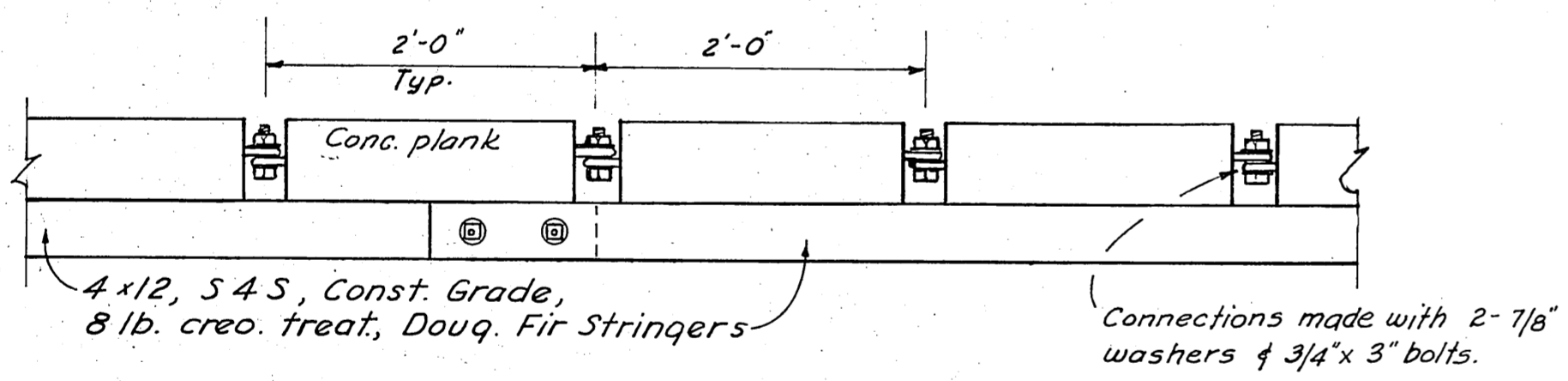
ELEVATION
Scale: 1"=1'-0"



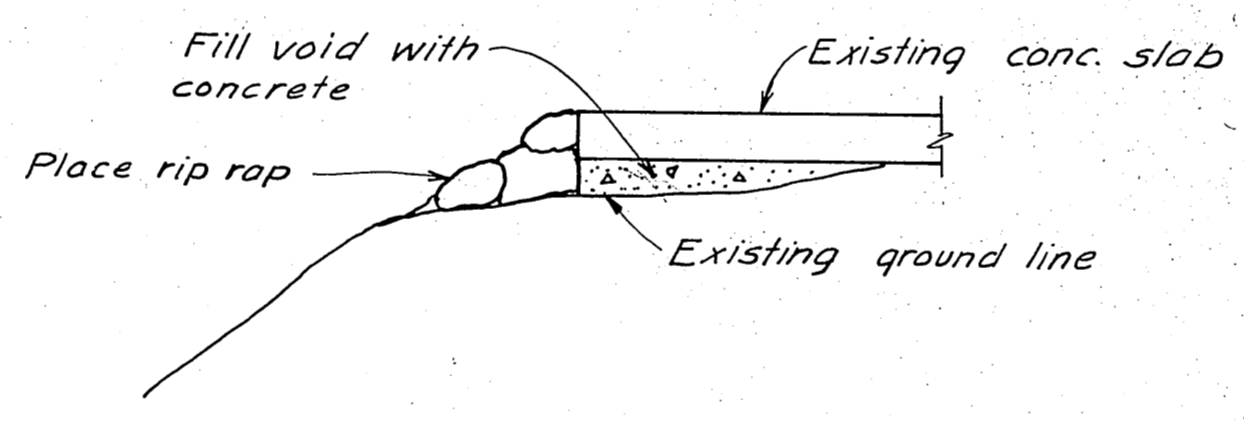
SECTION A-A
Scale: 1"=1'-0"



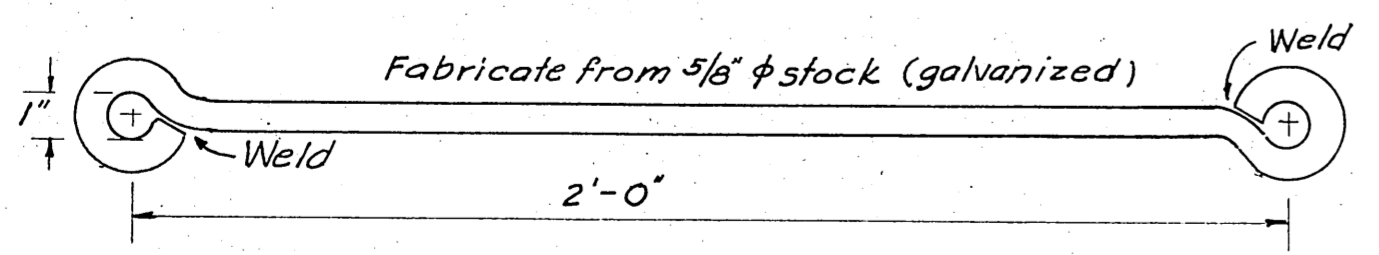
HARRIS HARBOR LAUNCHING RAMP



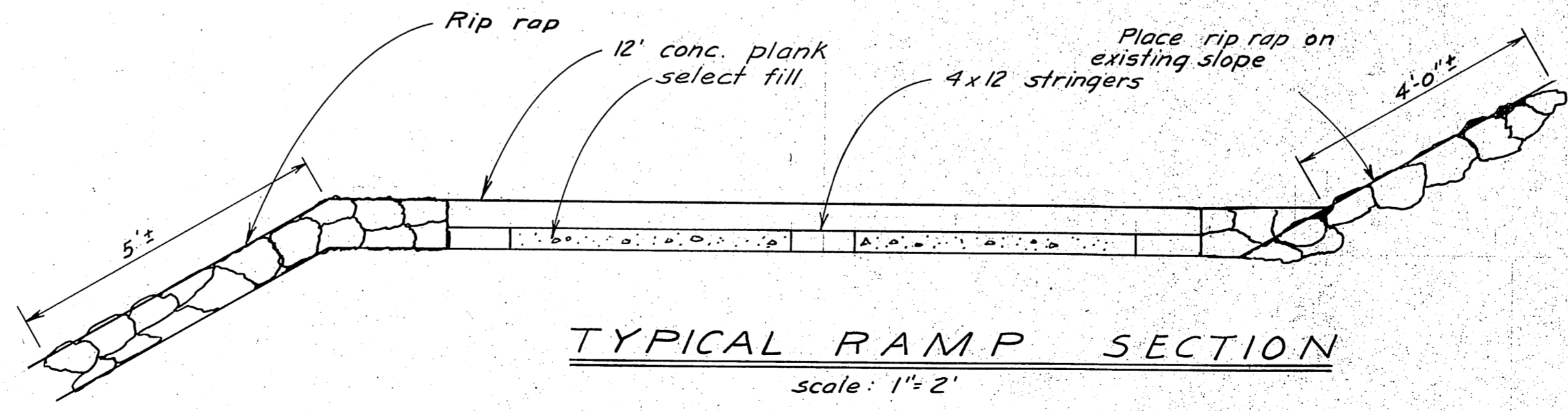
TYPICAL ASSEMBLY
Scale: 1"=1'-0"



TYPICAL RAMP SECTION
0+00 to 0+71
scale: 1"=2'



TYPICAL CONNECTING BAR
Scale: 3"=1'-0"

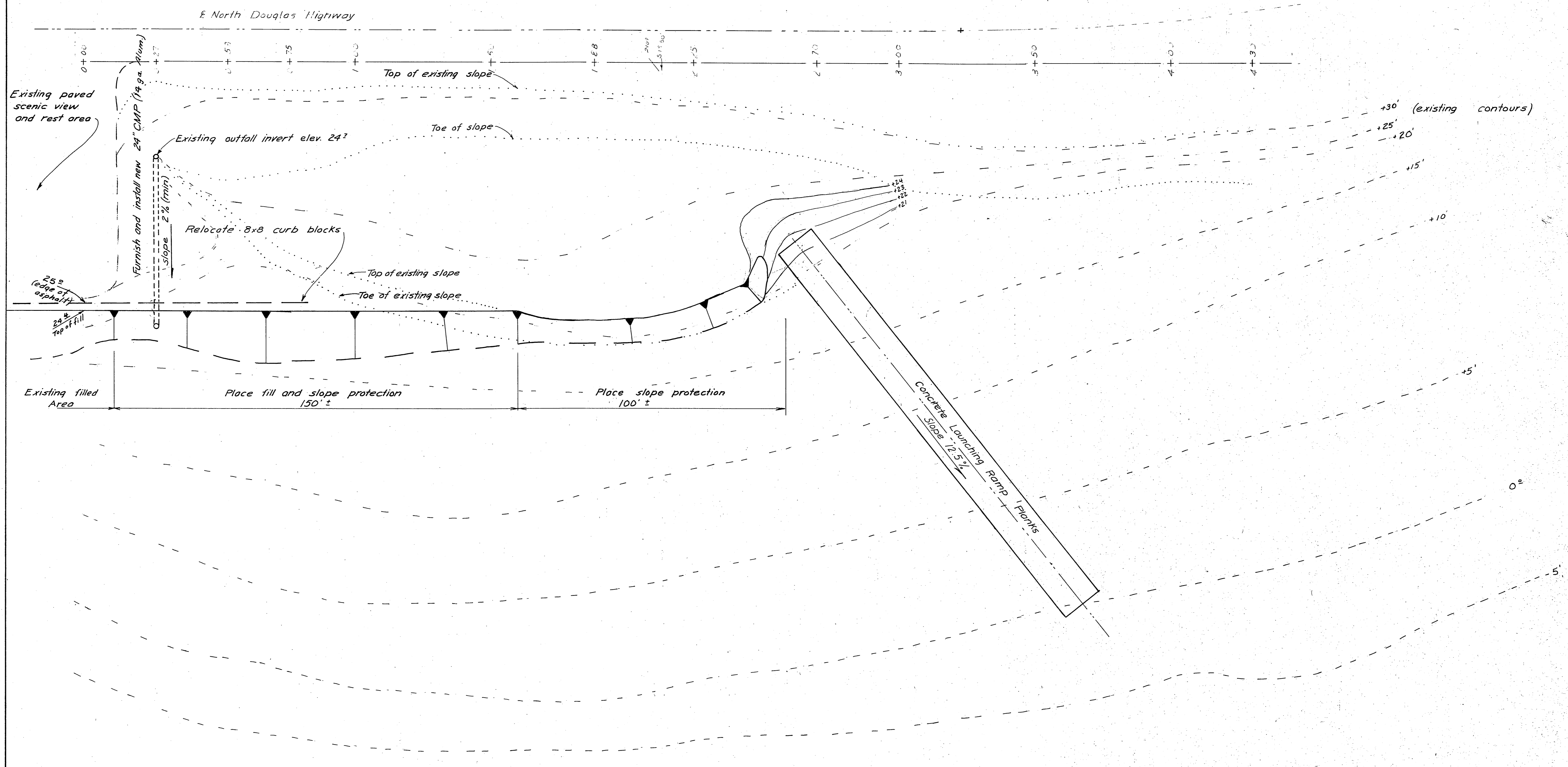


TYPICAL RAMP SECTION
scale: 1"=2'

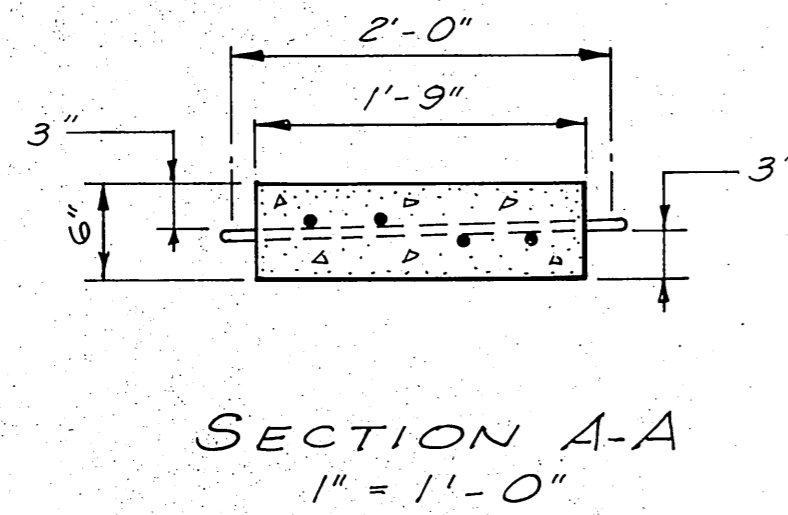
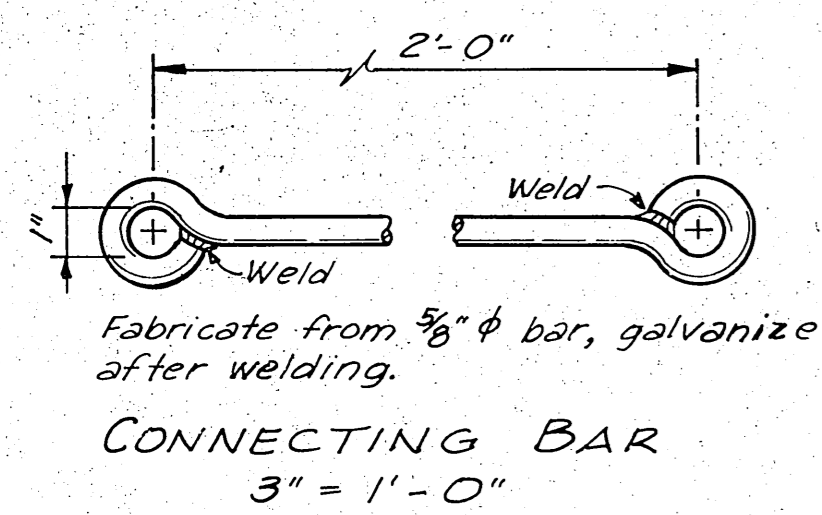
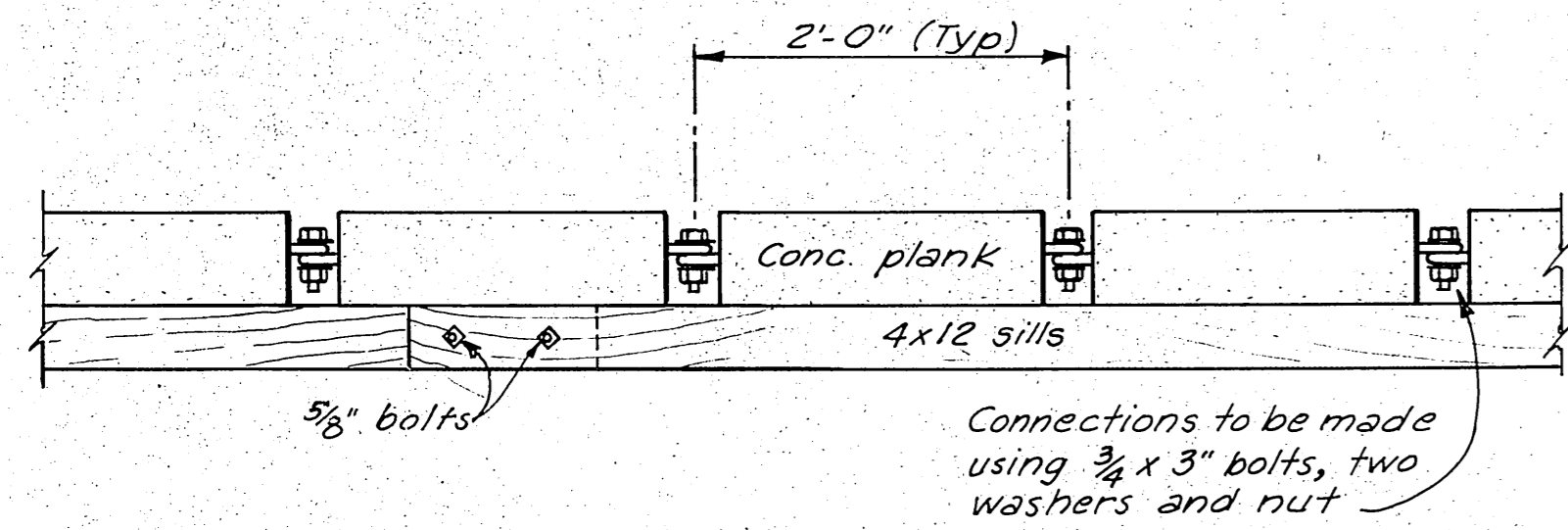
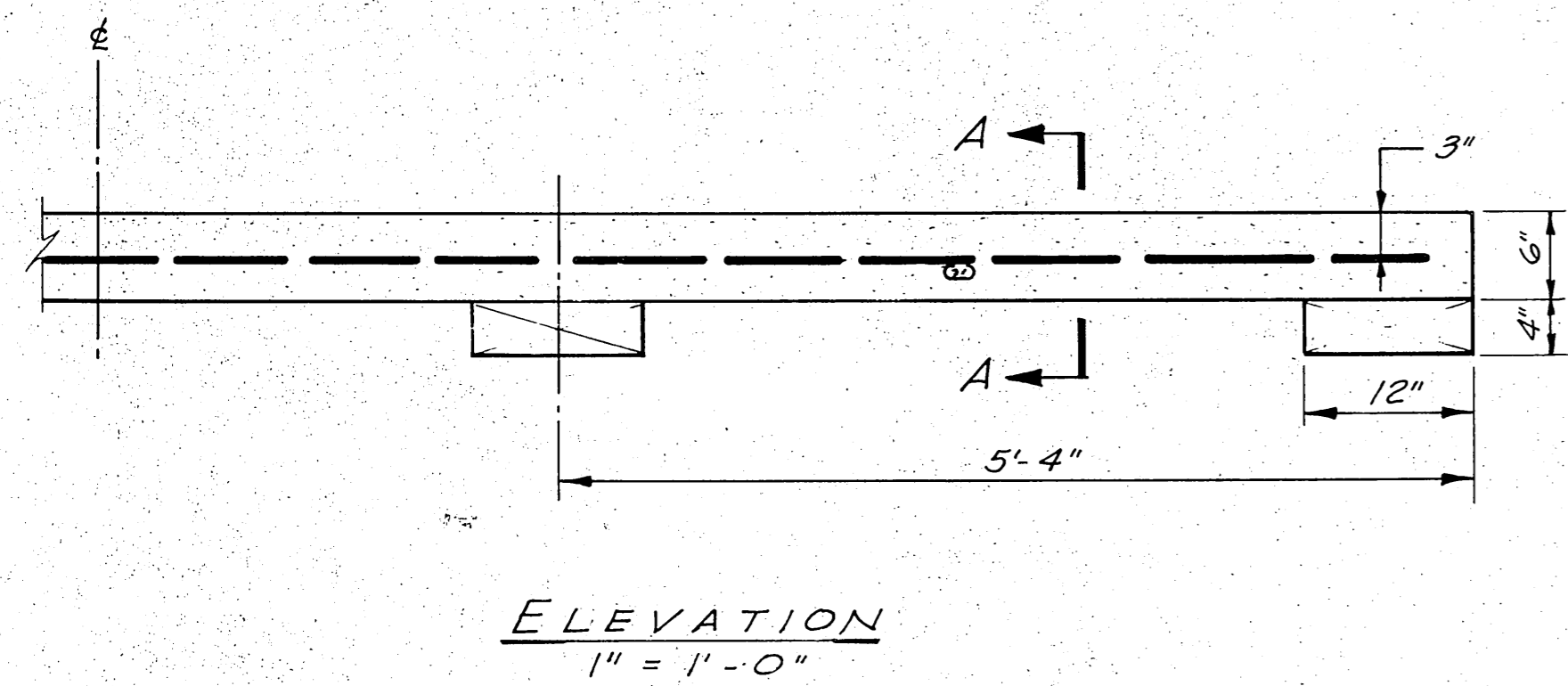
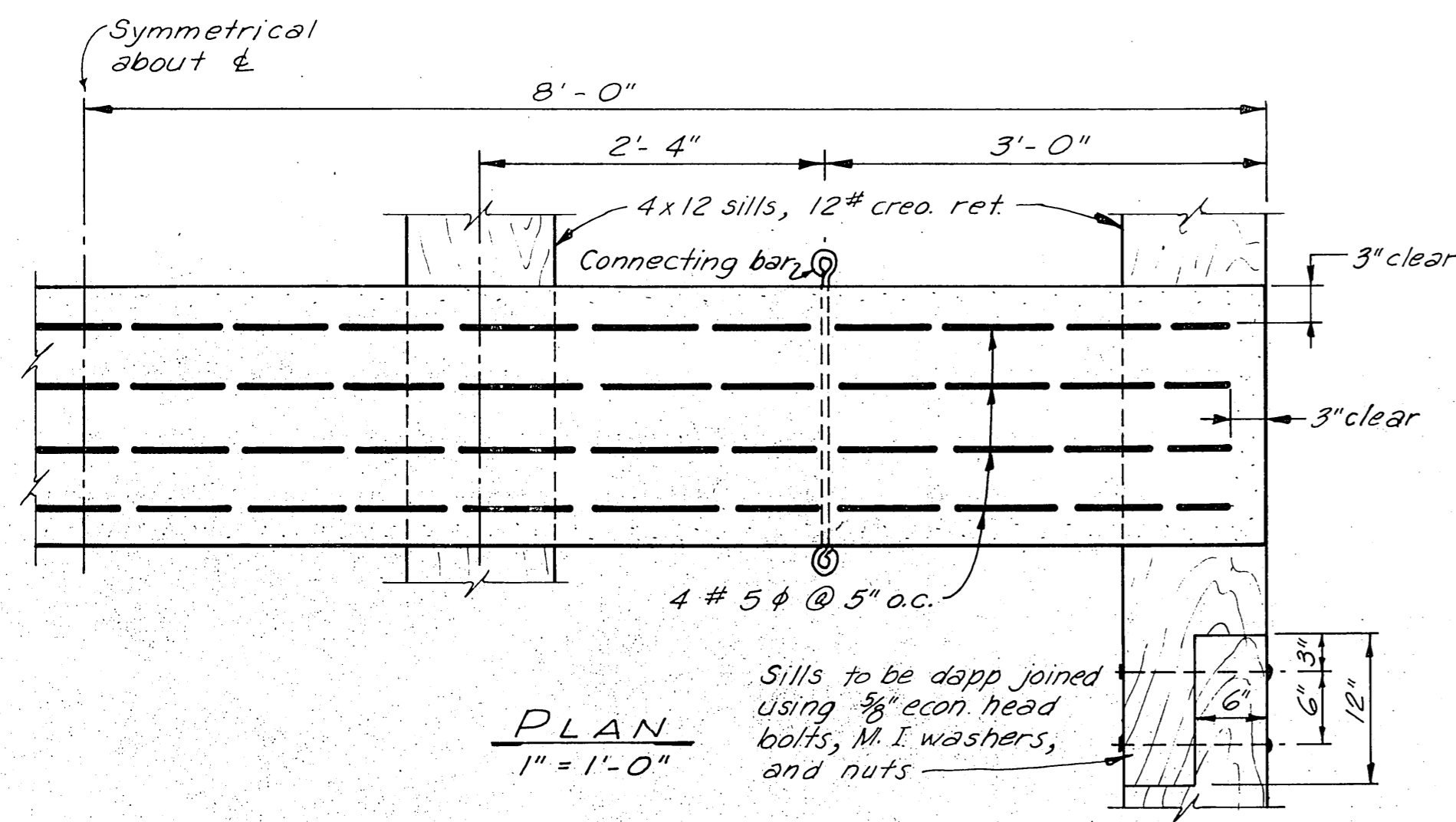
DETAILS - CONCRETE LAUNCHING RAMP PLANKS

DO NOT SCALE THIS DRAWING - USE DIMENSIONS		
STATE OF ALASKA DEPARTMENT OF PUBLIC WORKS DIVISION OF WATER AND HARBORS		
HARRIS HARBOR DETAILS - CONCRETE LAUNCHING RAMP		
SCALE AS SHOWN	SURVEYED	APPROVED
DESIGNED	DRAWN P. R. S.	DON STATTER DIRECTOR
CHECKED	DATE	
PROJECT NUMBER 3-75/45		SHEET 2 OF 4

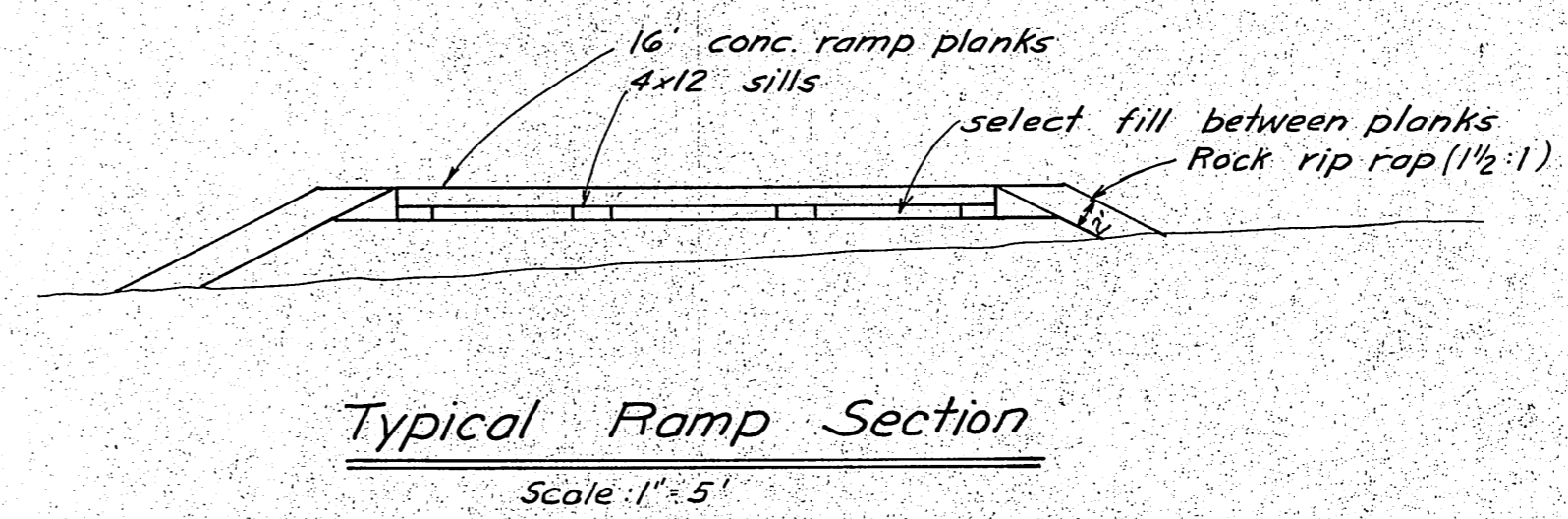
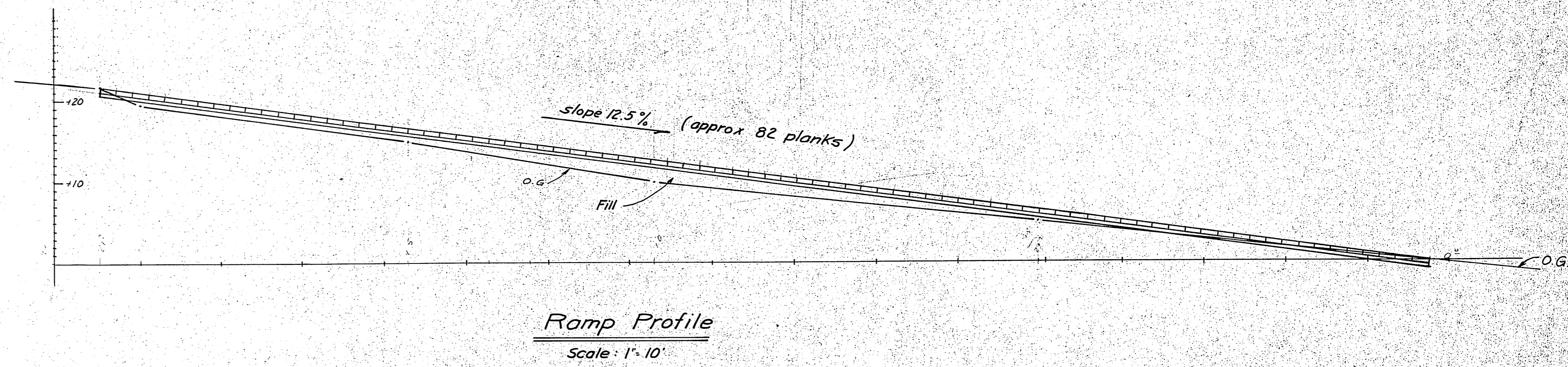
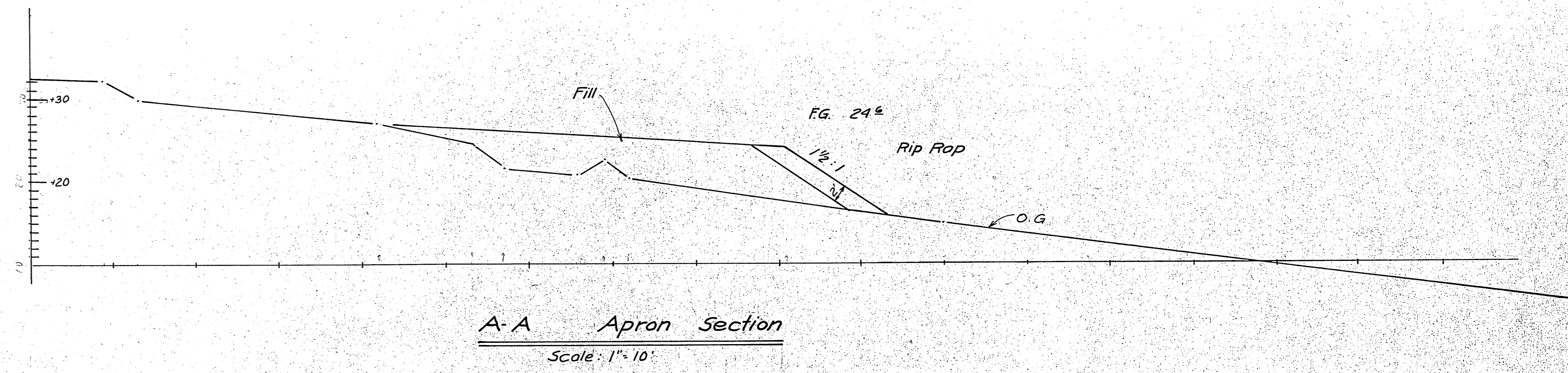
P.C. Mon. Elev. 31.05



DO NOT SCALE THIS DRAWING USE DIMENSIONS		
STATE OF ALASKA DEPARTMENT OF PUBLIC WORKS DIVISION OF WATER AND HARBORS		
North Douglas Launching Ramp		
SCALE 1" = 20'	SURVEYED <i>MMW</i>	APPROVED
DESIGNED <i>HM</i>	DRAWN <i>HM</i>	<i>Don Statter</i>
CHECKED	DATE <i>June 77</i>	DIRECTOR
PROJECT NUMBER 3-75/38	SHEET 3 OF 4	



DETAILS - PRECAST LAUNCHING RAMP PLANKS



DO NOT SCALE THIS DRAWING - USE DIMENSIONS		
STATE OF ALASKA DEPARTMENT OF PUBLIC WORKS DIVISION OF WATER AND HARBORS		
NORTH DOUGLAS DETAILS CONCRETE LAUNCHING RAMP		
SCALE: As noted	SURVEYED: —	APPROVED: —
DESIGNED: HM	DRAWN: JET	Don Statter DIRECTOR
CHECKED: —	DATE: July 74	
PROJECT NUMBER: 3-75138	SHEET 9 OF 9	