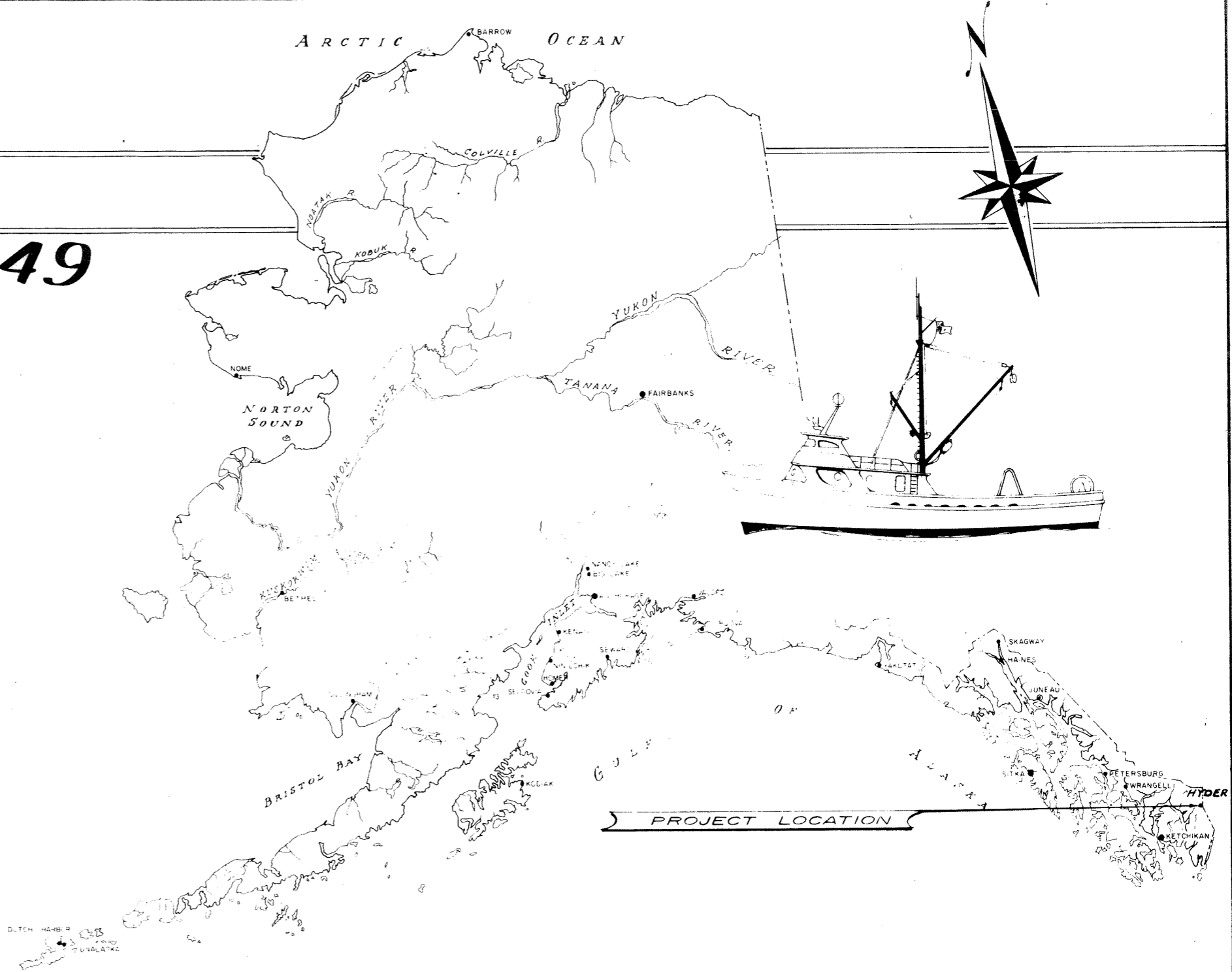


HYDER PUBLIC FLOAT and DOCK PROJECT No. 3-75149



WORK SUMMARY

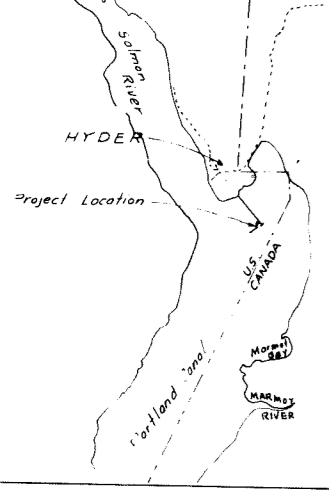
This project consists of removing existing floats, timber gangway and remnant dock piling; relocation of the existing seaplane float; furnishing and installing new cross bracing on the existing 1200'-long approach trestle; removing and replacing approx. 36' of existing trestle wheelguard; constructing 882 S.F. of timber approach and dock; constructing 1650 S.F. of new floats & furnishing and driving 12 new float piling; constructing a 6' x 50' steel gangway and furnishing & installing a standard project sign.

STATE OF ALASKA DEPARTMENT OF PUBLIC WORKS
DIVISION OF WATER & HARBORS

INDEX TO SHEETS	
1	Title Sheet
2	Project Location and Plan Layout
3	Dock, Gangway Float and 150' Float Str. Dia.
4	Typical Approach Construction Details
5	10' Float Details
6	Typical Gangway, Sh. A
7	Typical Gangway, Sh. B

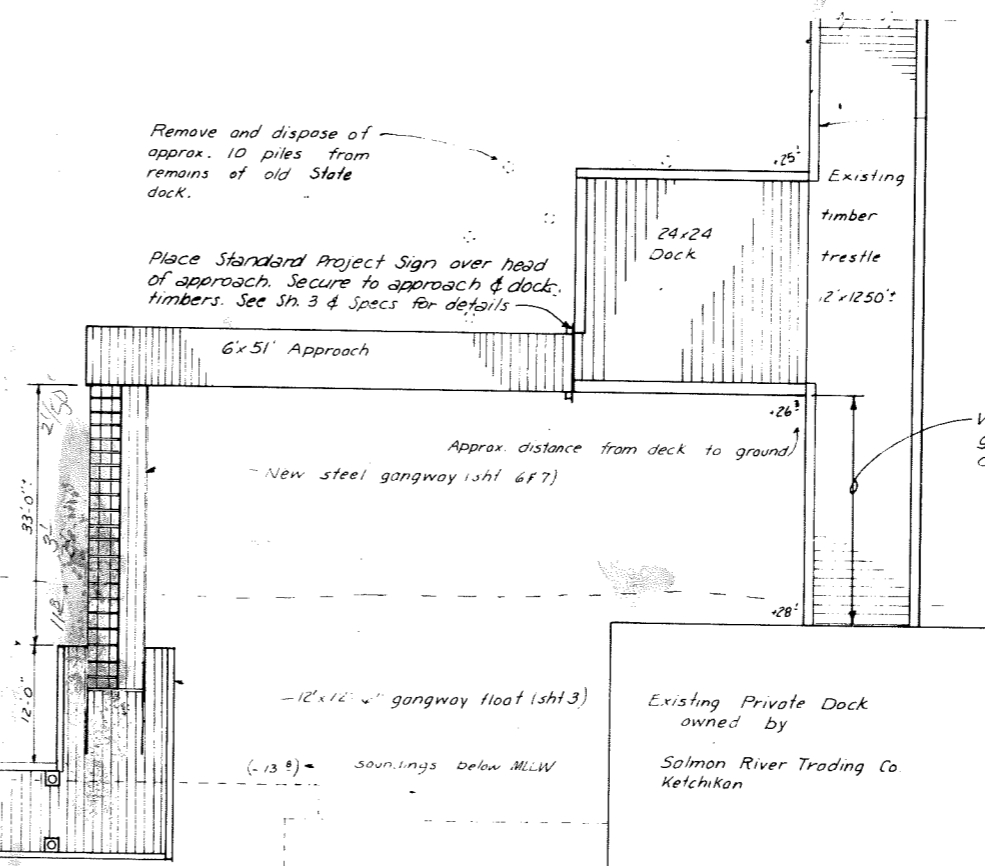
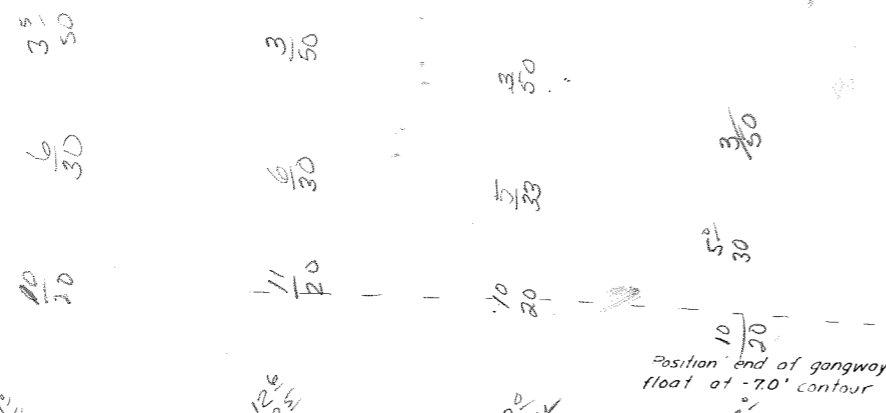
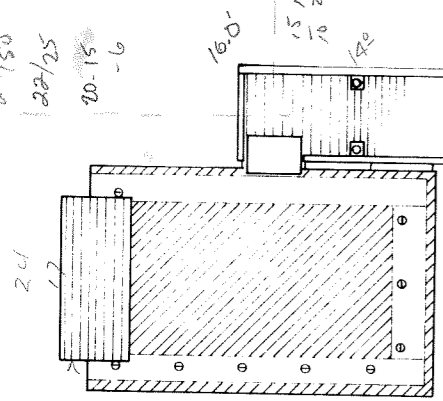
APPROVED
Wen Statta
DIRECTOR
DATE 7/16/75
SHEET 1 OF 7

Tide +1.5 low
 (1 AM) -1.1
 1.6 Tide



VICINITY MAP
 Hyder adj.
 Time High Low

-1:04	1.4	1.1	4	75
			5	60
			6	50
			10	34
			12	28
			15	20



Provide approx 36' of 12x12 wheelguard and handrail to existing trestle. Construction to be similar to new dock construction details. Remove existing wheelguard as directed by engineer. See sheet 4 for other work required on existing trestle.

Variable - field set to place gangway and float in adequate depth of water.

Existing Private Dock owned by Salmon River Trading Co Ketchikan

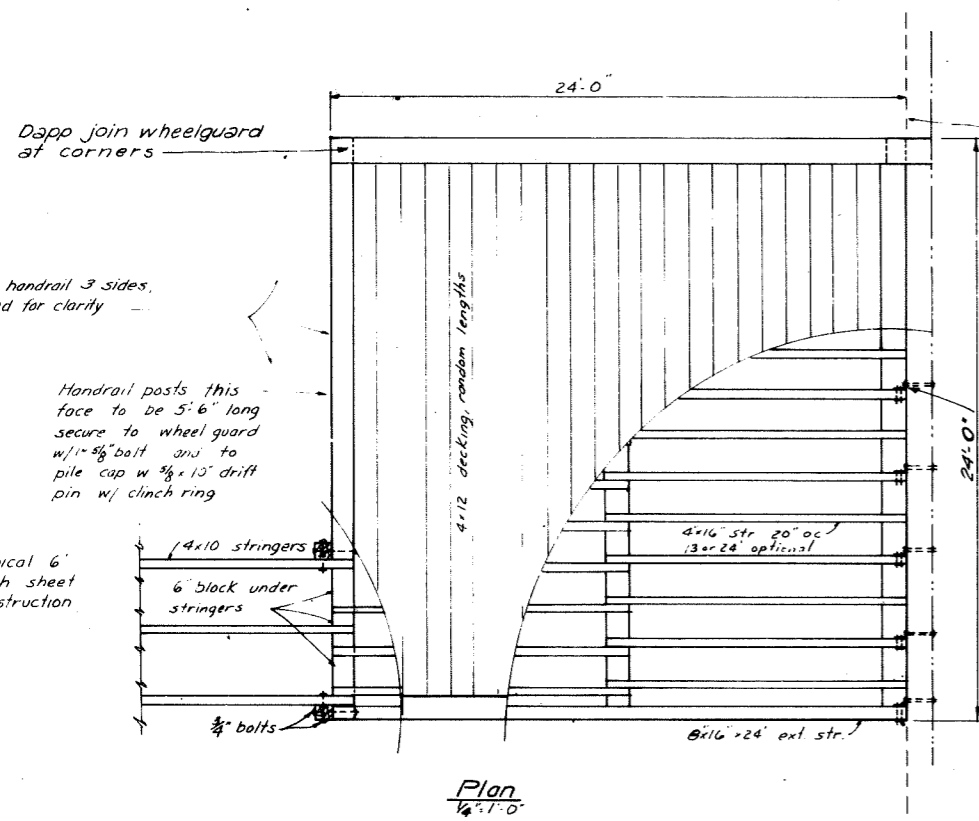
Existing 75' float and timber gangway to be removed and disposed of as directed by the engineer.

Existing seaplane float to be relocated at end of new float. Install with salvaged hardware from existing installation.

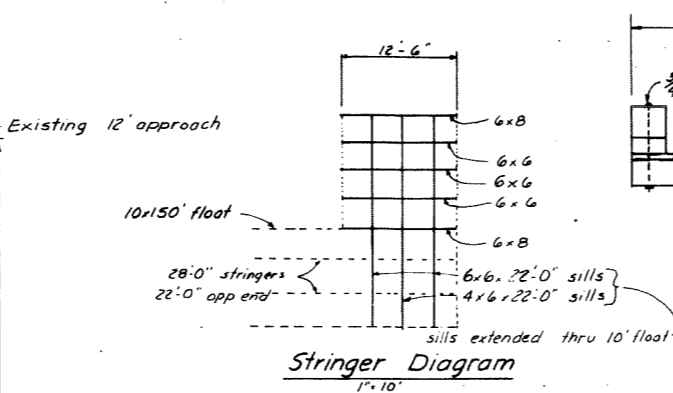
PLAN LAYOUT

1" = 10'

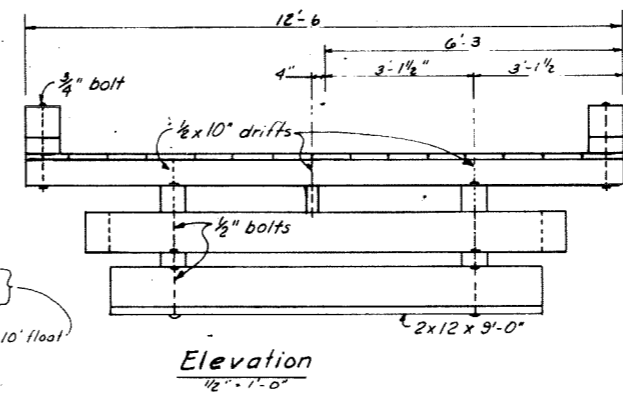
DO NOT SCALE THIS DRAWING USE DIMENSIONS		
STATE OF ALASKA DEPARTMENT OF PUBLIC WORKS DIVISION OF WATER AND HARBORS		
Project Location and Plan Layout		
SCALE As noted	SURVEYED MM	APPROVED
DESIGNED MM	DRAWN MM	Don Statter DIRECTOR
CHECKED	DATE Mar 12, 1975	
PROJECT NUMBER 375149	SHEET 2	OF 7



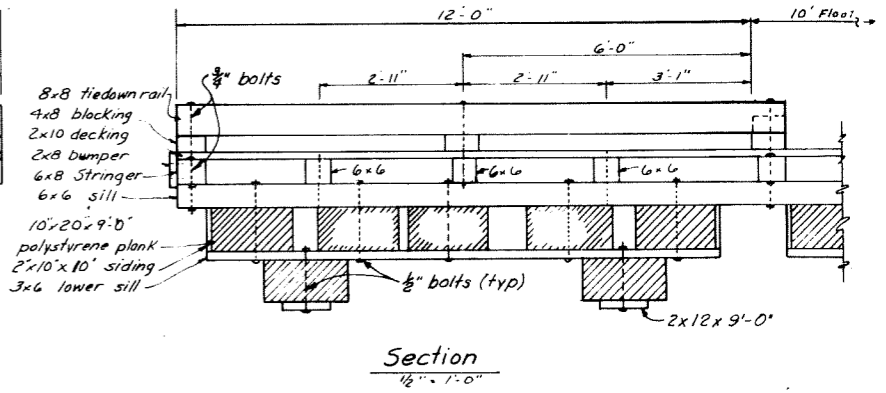
Plan
1/4" = 1'-0"



Stringer Diagram
1" = 10'



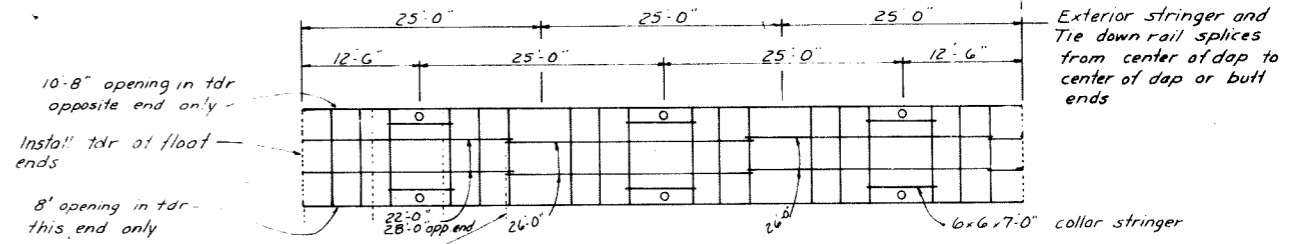
Elevation
1/2" = 1'-0"



Section
1/2" = 1'-0"

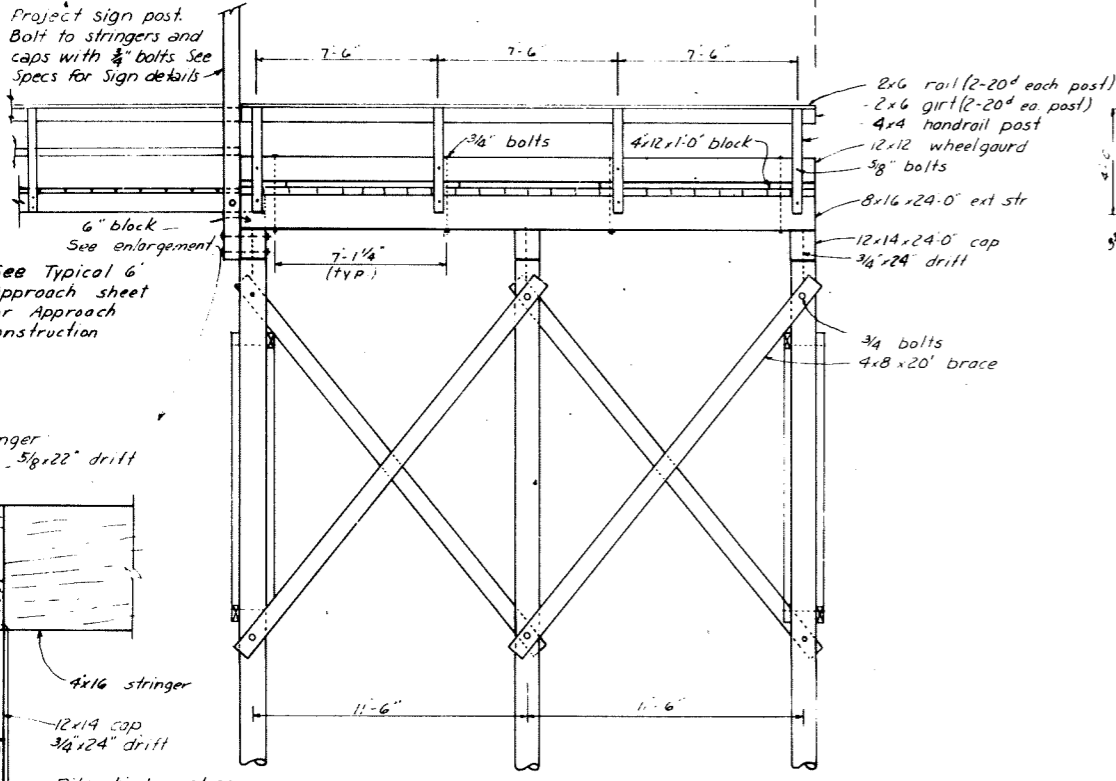
12'-0" x 12'-6" GANGWAY FLOAT

Secure to existing Approach with angle clips & 1/2" bolts at alternate stringers. See angle clip detail, Sh. 5.



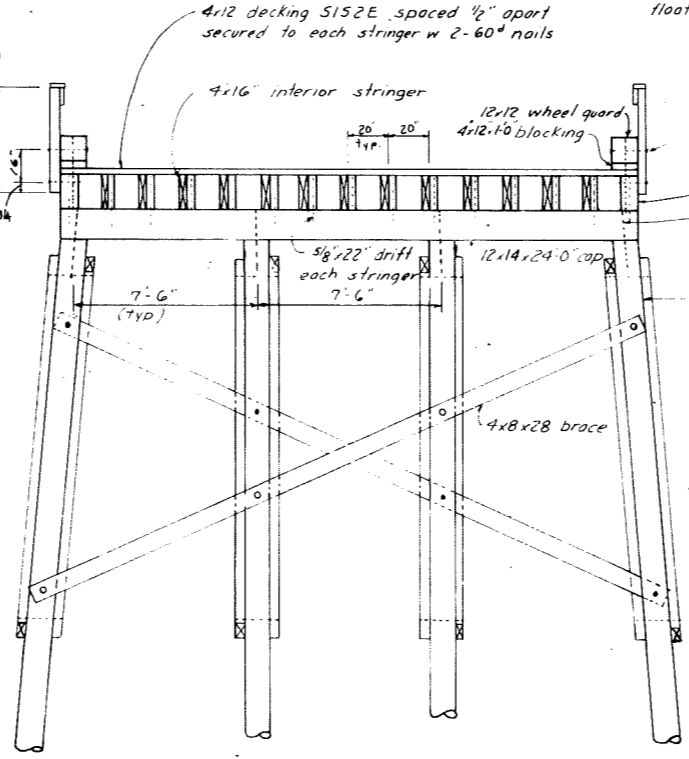
Stringer Diagram
1" = 10'

10' x 150' TIMBER FLOAT



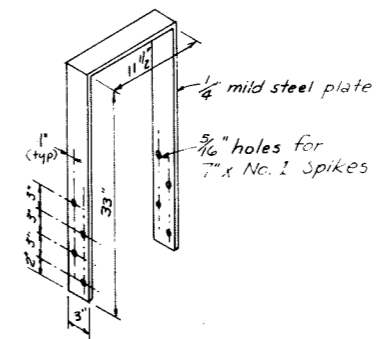
Elevation
1/4" = 1'-0"

24'-0" x 24'-0" DOCK

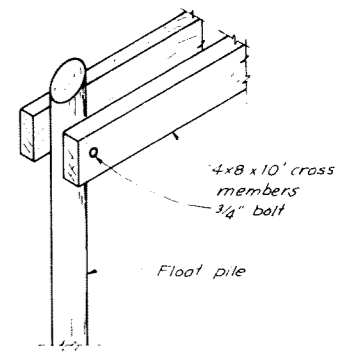


Section
1/4" = 1'-0"

NOTE: For materials treatment and dressing, see Sheets 4 & 5.

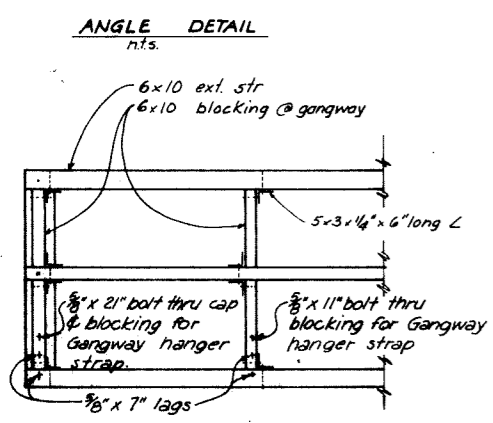
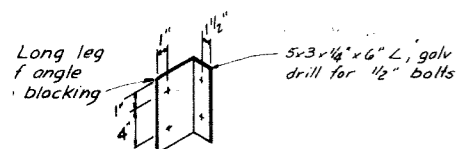


TIEDOWN STRAP DETAIL
18 REQ'D
nts

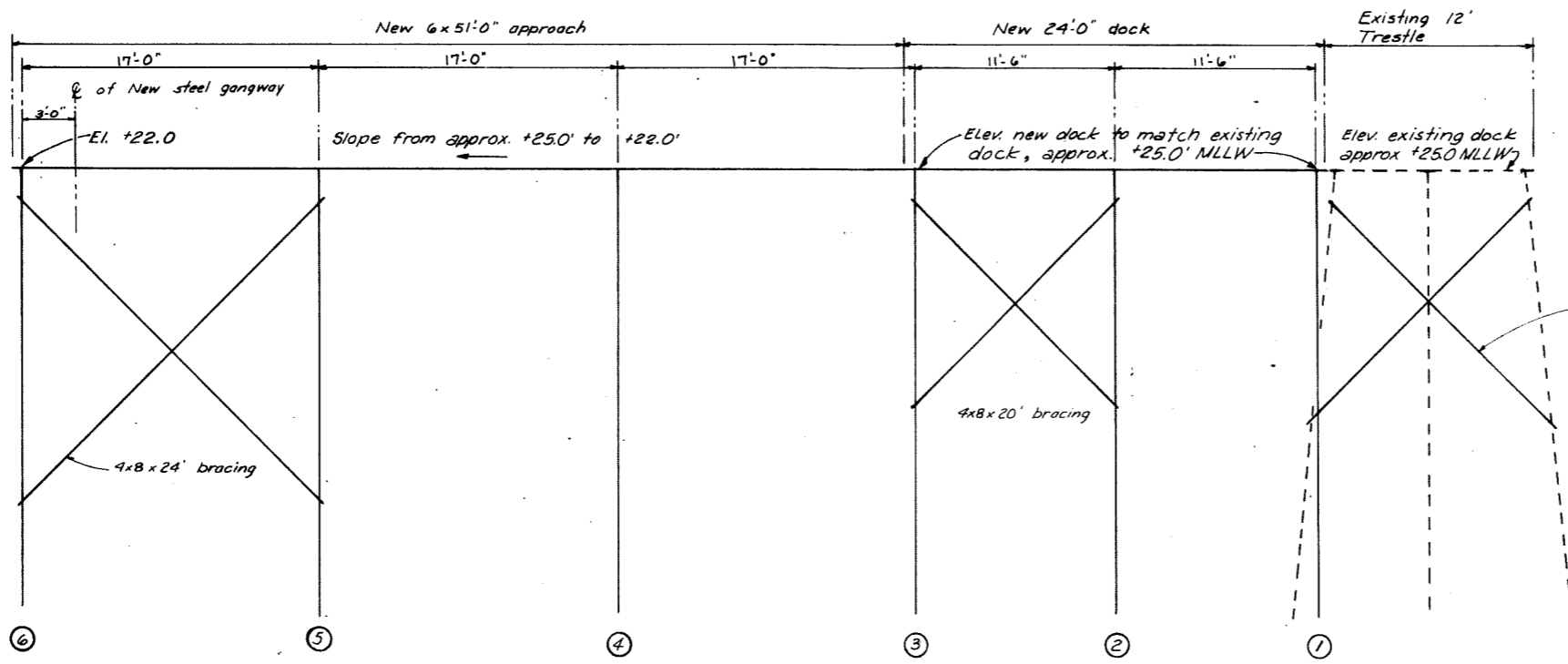


Cross tied Pile Detail
nts

DO NOT SCALE THIS DRAWING USE DIMENSIONS		
STATE OF ALASKA DEPARTMENT OF PUBLIC WORKS DIVISION OF WATER AND HARBORS		
HYDER DOCK GANGWAY FLOAT 10' x 150' MAIN FLOAT Plans, Elevations, Sections & Stringer Diagrams		
SCALE As Noted	SURVEYED	APPROVED
DESIGNED HM	DRAWN HM	Don Stotter DIRECTOR
CHECKED	DATE Feb 74	
PROJECT NUMBER 375149	SHEET 3 OF 7	



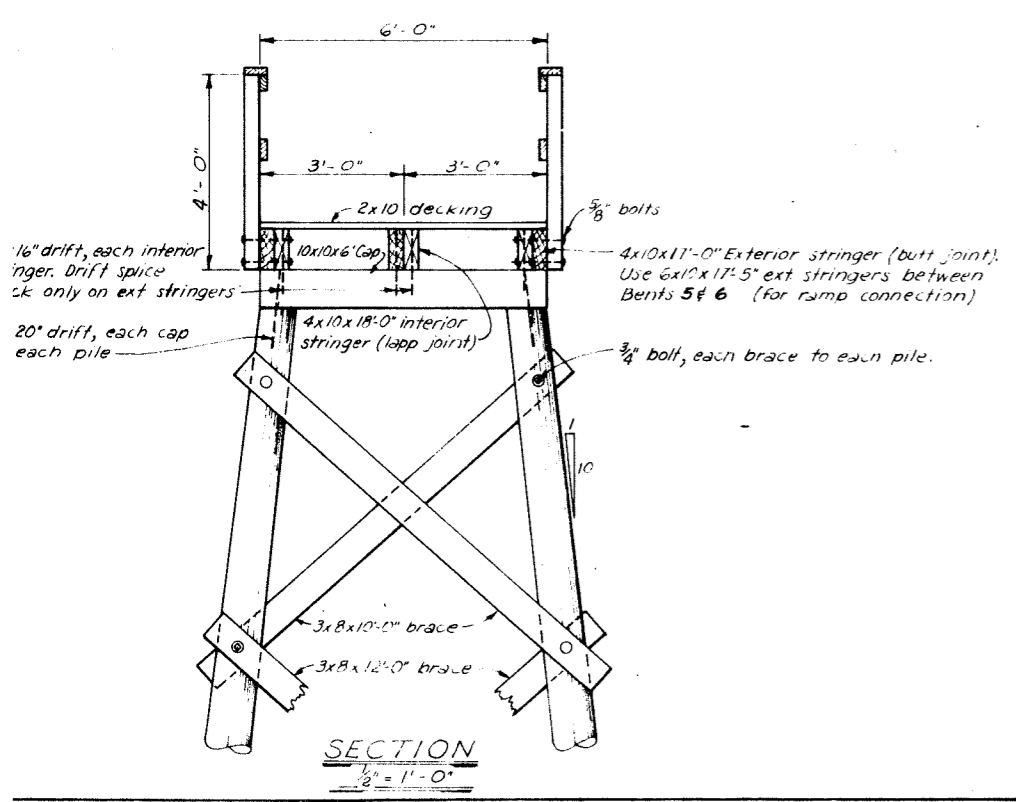
APPROACH END DETAIL
3/8" = 1'-0"



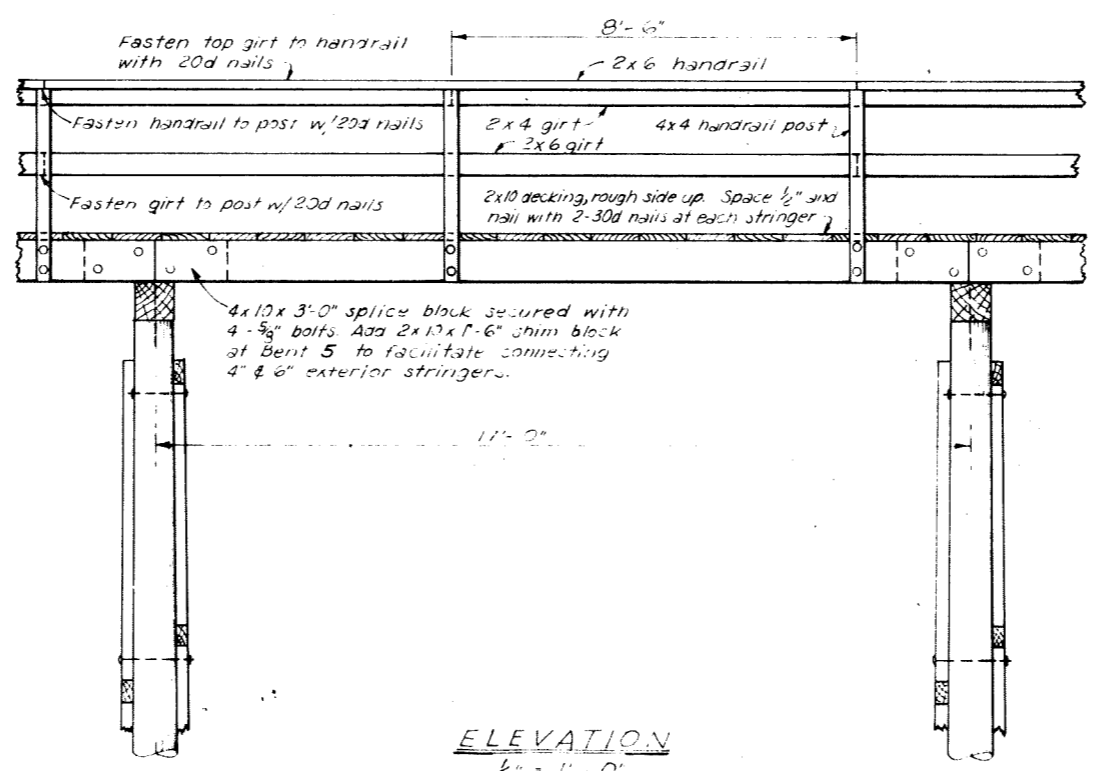
Furnish and install new 4x10x18' rough bracing to existing trestle 50 pcs. Install as directed by the engineer. Remove and dispose of broken bracing. Provide 1" bolts - 150 ea, 1-bolt ea brace at each pile.

APPROACH & DOCK PROFILE

1" = 5'



SECTION
1/2" = 1'-0"

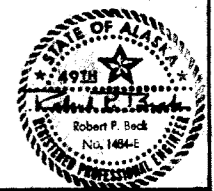


ELEVATION
1/2" = 1'-0"

NOTES:

- All hardware to be hot dip galvanized. A malleable iron washer shall be placed between all nut and wood surfaces.
- All bolts to be of the economy head type. Bolt holes to be 1/16" oversize.
- Drift holes to be 1/16" undersize.
- All pressure treated materials to be cut to size prior to treatment.
- Drift holes in stringers & splice blocks, and bolt holes in exterior stringers for splice block, shall be drilled prior to treatment. All other holes may be field drilled.
- All field cuts or field drilled holes shall be treated with hot creosote oil or pentachlorophenol, as applicable.

MATERIALS		
ITEM	DRESSING	TREATMENT
Piles		12-1b Creos
Bracing	Rough	" "
Caps	S4S	8-1b Creos
Stringers	S2E	" "
Splice Block	"	" "
Decking	Milled	WR Penta (or equal)
Handrail	S4S	" "
Handrail Post	"	" "
Girts	"	" "

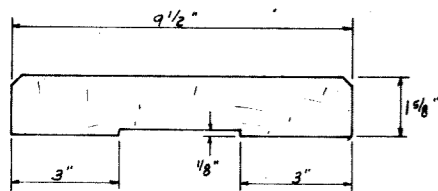


DO NOT SCALE THIS DRAWING USE DIMENSIONS

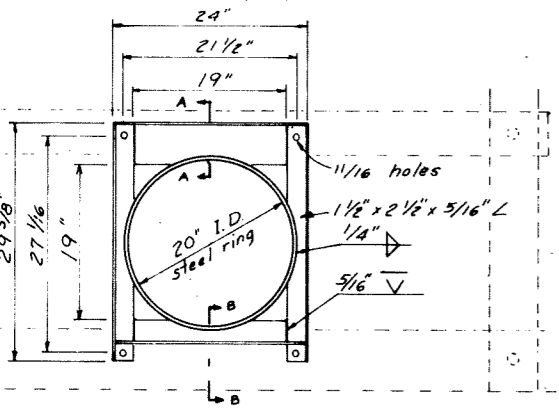
STATE OF ALASKA
DEPARTMENT OF PUBLIC WORKS
DIVISION OF WATER AND HARBORS

**TYPICAL 6' APPROACH
CONSTRUCTION DETAILS**

SCALE As shown	DRAWN JT	APPROVED
DESIGNED	DATE	Don Statter DIRECTOR
CHECKED		
PROJECT NUMBER 3-75149	SHEET 4 OF 7	



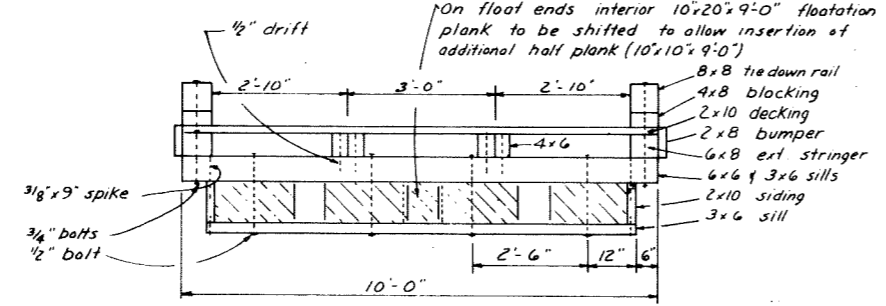
Milled Decking Detail
3/8" = 1" (3/8 size)



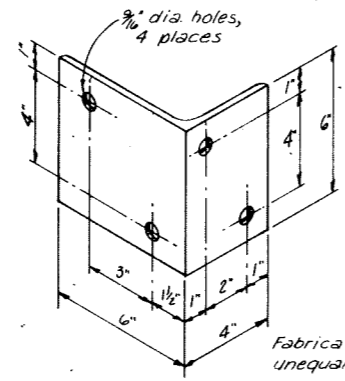
Plan 1/2" = 1'-0"
NOTE: All welds on inside face of steel ring shall be ground smooth.

9/16" drill 3 hole

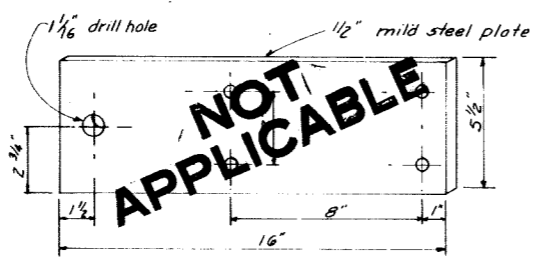
Note: All material to be mild steel, hot dipped galvanized after fabrication



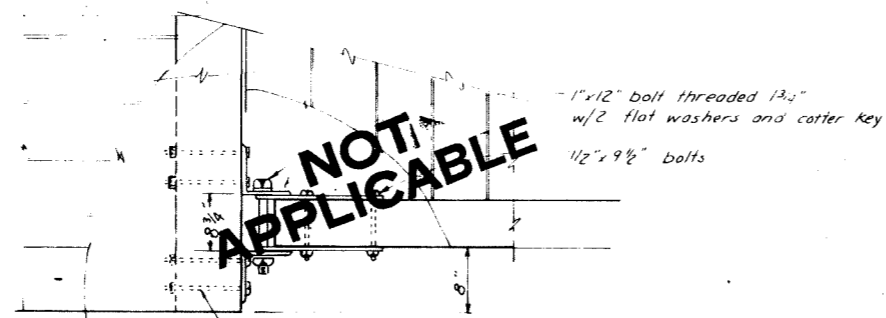
Section 1/2" = 1'-0"



ANGLE CLIP 3" = 1'-0"

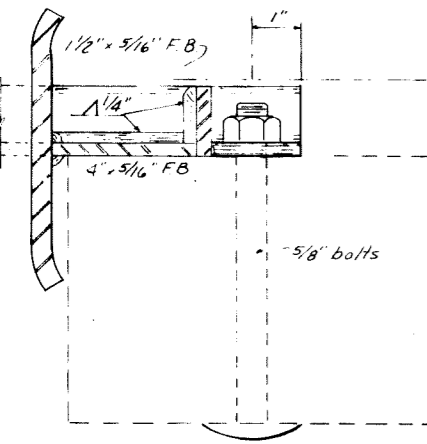


Standard plate



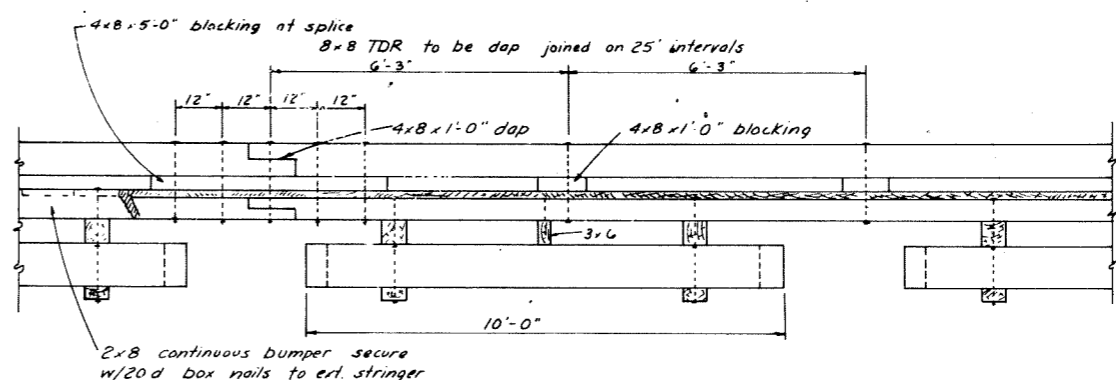
Right Angle Connection

Float Connection Details 3/8" = 1'-0"

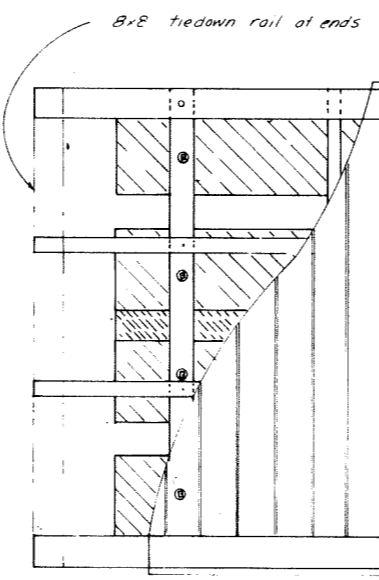


Section B-B half size

Steel Pile Collar Details



Elevation 1/2" = 1'-0"



Plan - 10' Float 1/2" = 1'-0"

ITEM	DRESSING	TREATMENT
3x6 - 6x6 upper sill	S 1 E 1/2" oil	12 lbs ret.
2x10 siding	2x10 1/2"	" "
3x6 lower sill	rough	" "
4x6 interior stringers	S 2 E	8 lbs ret.
6x6 collar member	S 2 E	" "
6x6 exterior stringer	S 4 S	" "
2x8 bumpers		WR. Penta (or equal)
2x10 decking	milled	" "
4x8 blocking	S 4 S	" "
8x8 tie down rail		" "

All material to be select structural grade douglas fir FOHC
All piling will be class A creosoted to 12 lbs. retention
All 12 lb ret creosoted treatment to be full cell
All 8 lb " " " empty cell

- Predrill bolt holes -
- Collar member - all holes
- Sills - holes for floatation plank bolts
- Stringers - holes for stringer to sill bolts
- Tie down rail - all holes
- Field drill bolt holes
- Sills - holes for stringer to sill bolts
- pile collar member to sill bolts
- Rail blocking - all holes
- Exterior stringer - holes for tie down rail bolts

6x8 exterior stringers to be dapped joined on 25'-0" intervals (see stringer diagram)

4x6 interior stringers to be lap joined in 24' lengths Secure to each sill with 1/2" x 10" drifts

6x6 x 7 collar member secure to each sill w/5/8" bolts

Notes:

All hardware to be hot dipped galvanized. A malleable iron washer shall be placed between all nut and wood surfaces. All bolts to be economy headed type. Bolt holes to be drilled 1/16" oversize except sill bolt holes for floatation planks 1/8" oversize. Drift holes to be drilled 1/16" undersize. All field drill holes shall be treated with hot creosote oil. All pressure treated creosote material shall be cut to size prior to treatment. Tie down rails shall extend across float ends except under gangway. All bolt heads facing decking shall be counter sunk 1/4" prior to treatment. Field drill all drift holes. A barrier of 6 mil black polyethylene shall be placed between the contact surfaces of all creosote timber and floatation material (except float siding member).

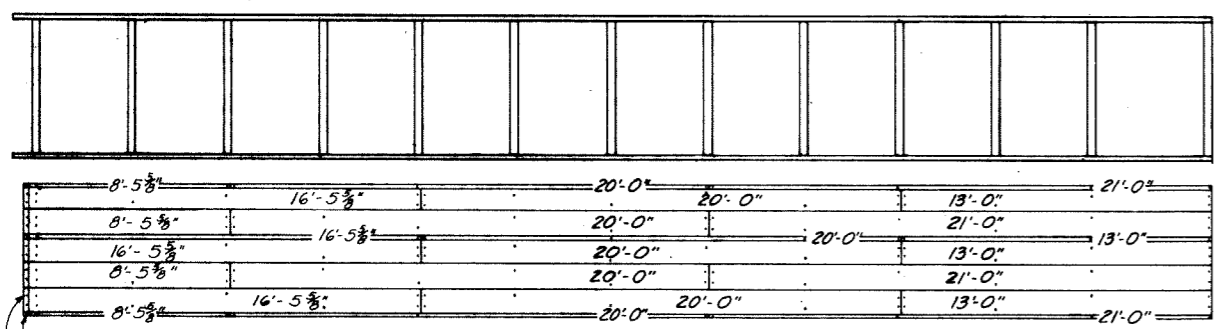
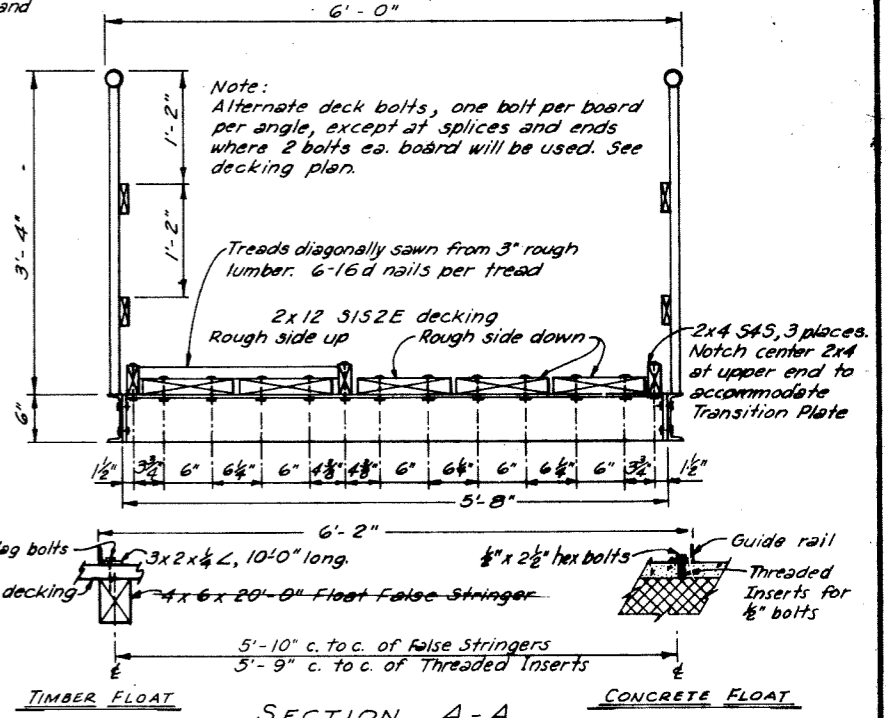
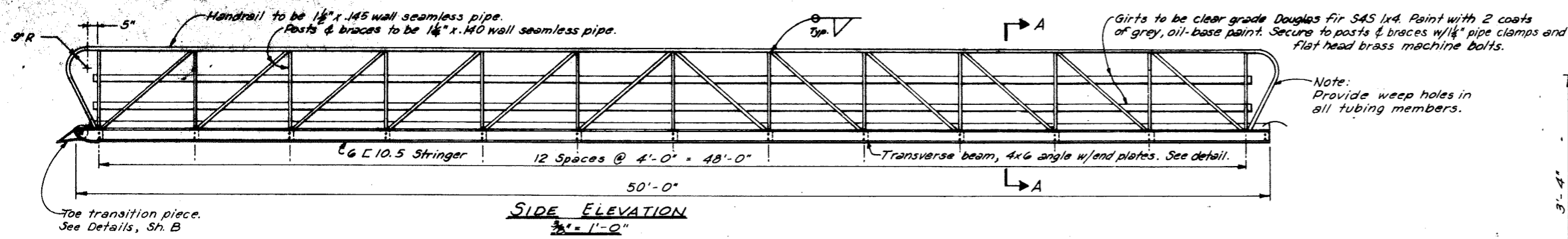


DO NOT SCALE THIS DRAWING - USE DIMENSIONS

STATE OF ALASKA
DEPARTMENT OF PUBLIC WORKS
DIVISION OF WATER AND HARBORS

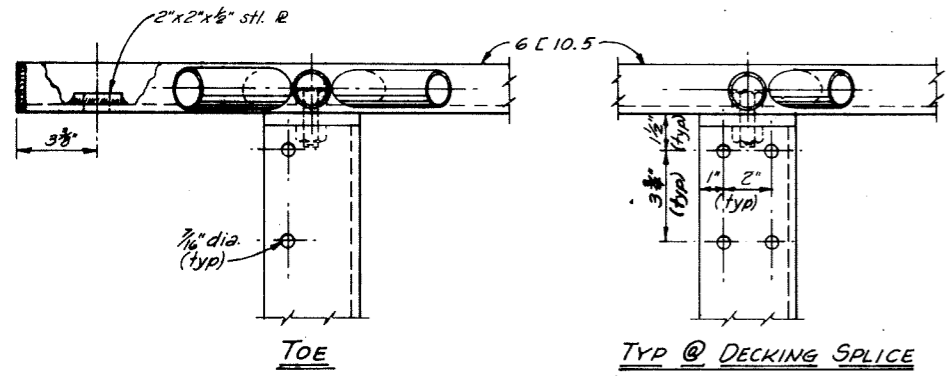
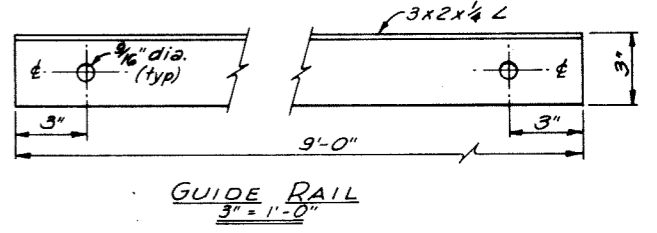
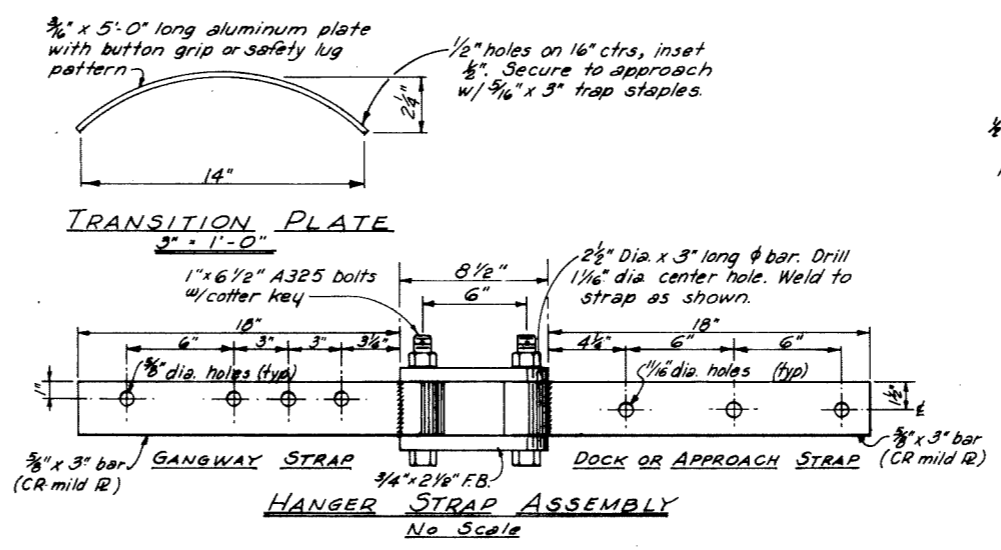
10' FLOAT DETAILS

SCALE As noted	SURVEYED	APPROVED
DESIGNED DW/DS	DRAWN JM	Don Statter
CHECKED	DATE Jan 75	DIRECTOR
PROJECT NUMBER 3-1-19	SHEET 3 OF 7	

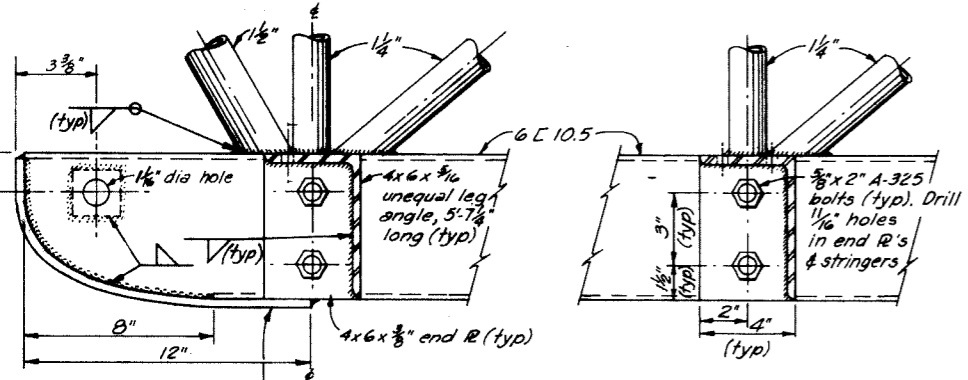
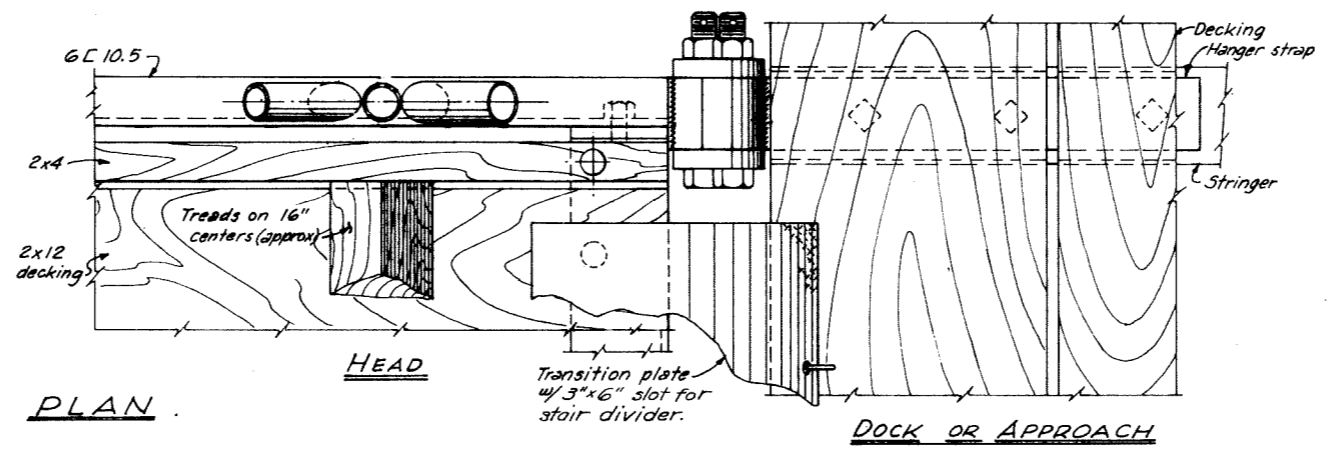


Notch decking 2 1/2" wide x 1/4" deep. Field drill this row of 3/8" holes.

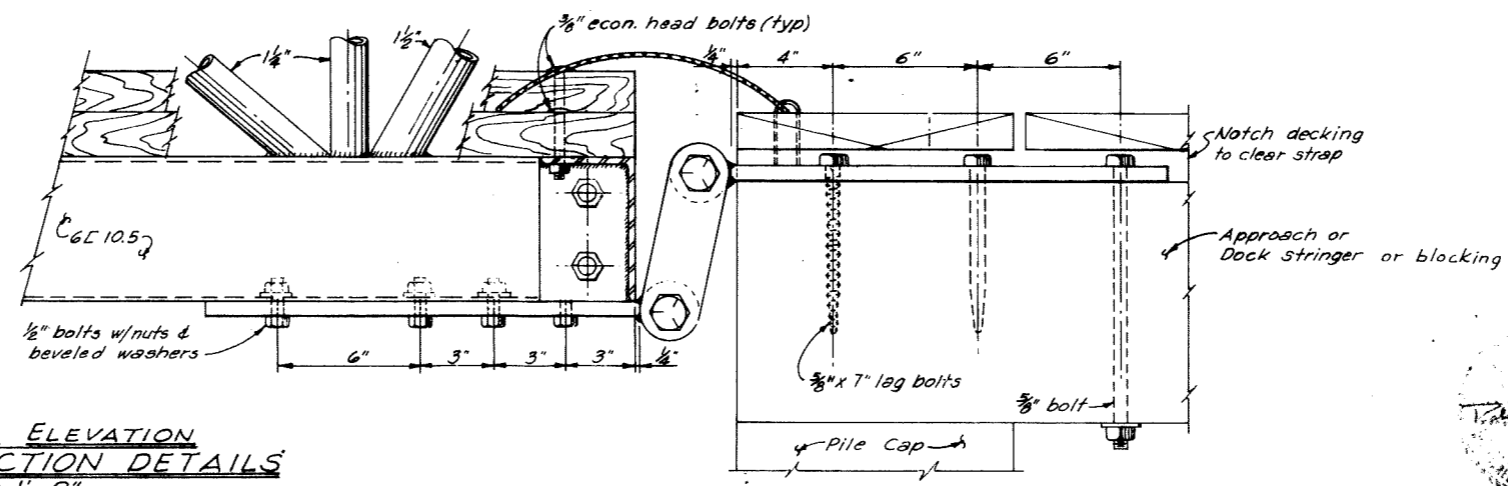
DECKING SPLICE LAYOUT
1/4" = 1'-0"



NOTE: FOR TOE TRANSITION PIECE, SEE SH. B



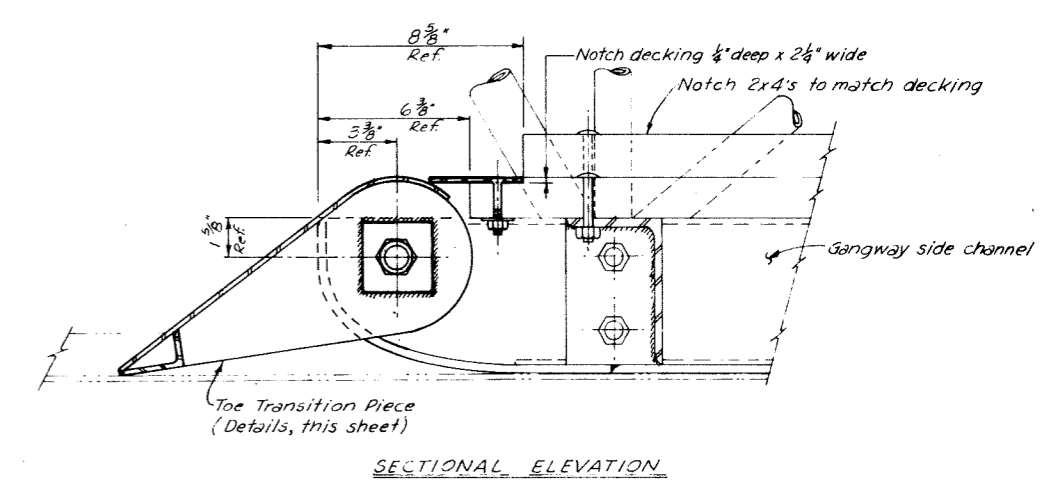
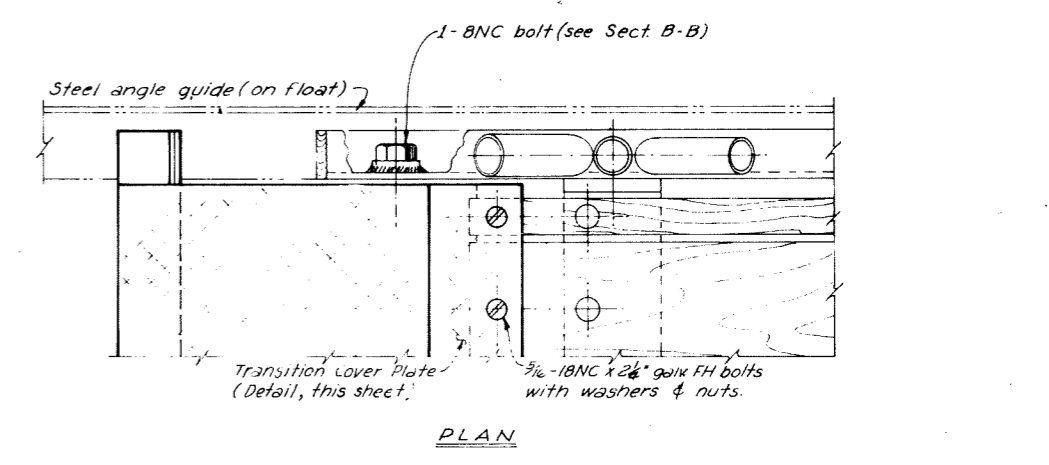
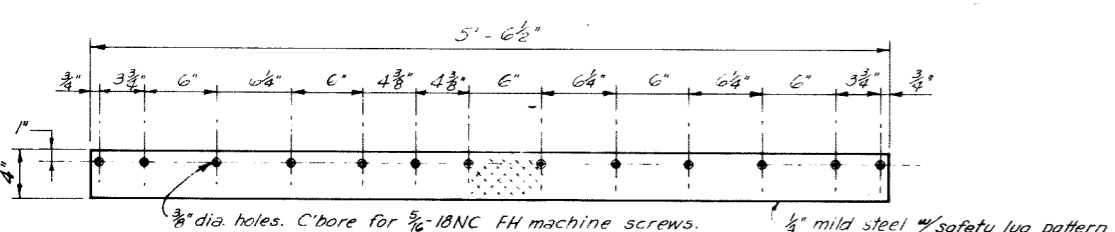
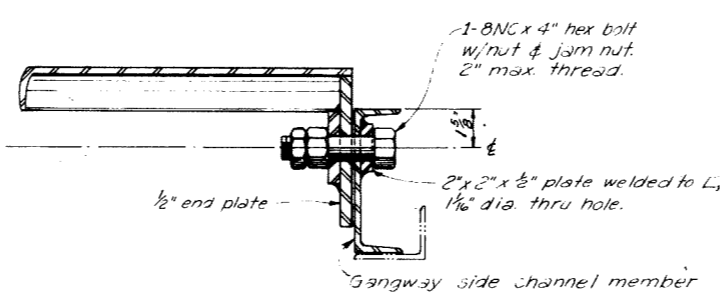
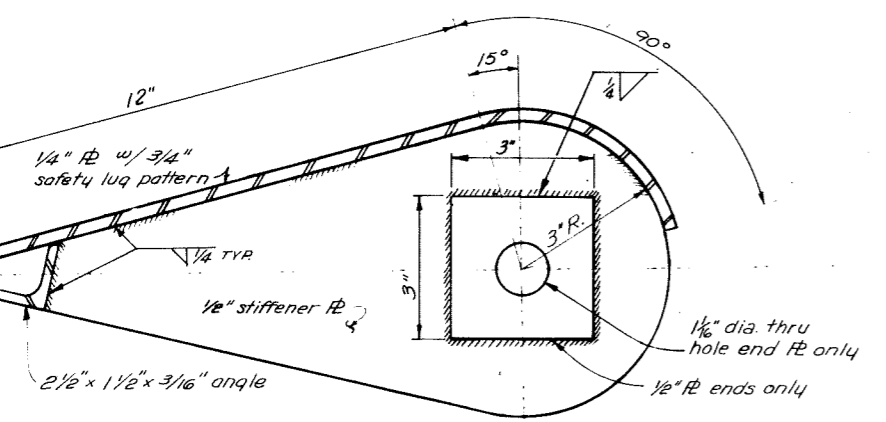
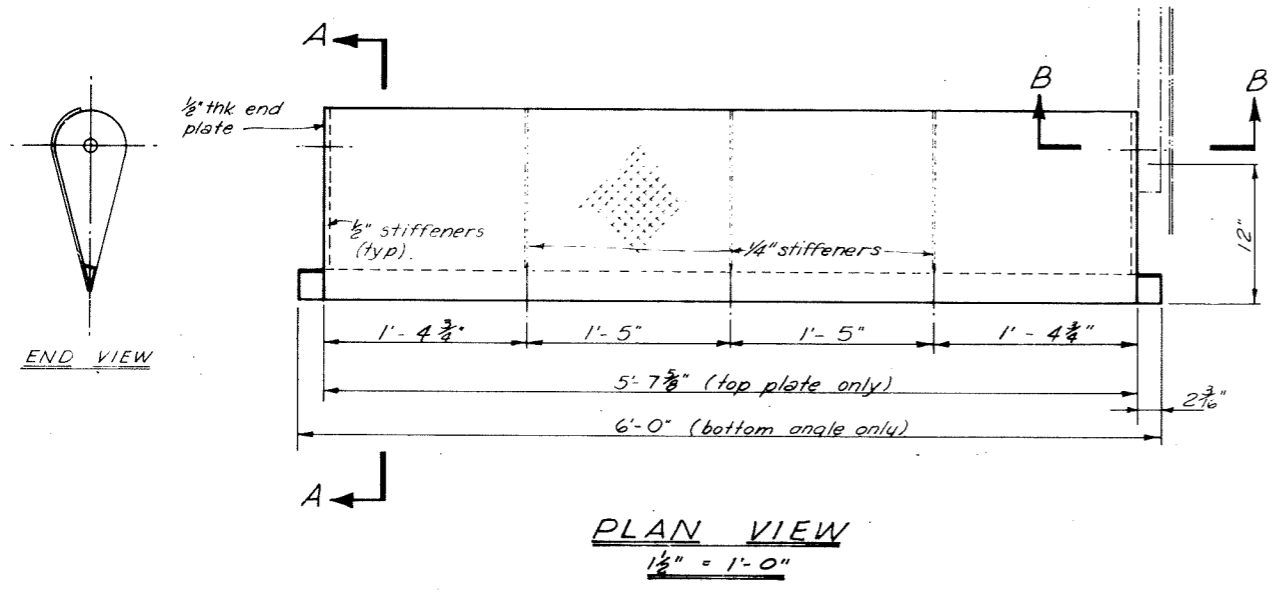
SECTIONAL ELEVATION CONSTRUCTION DETAILS
3" = 1'-0"



- NOTES:
- All seamless pipe shall conform to ASTM A-53.
 - All channels, angles & plates shall conform to ASTM A-36.
 - Trusses shall be shop fabricated & assembled including hangers.
 - Splices shall be held to a minimum and, where necessary, shall be made in a manner that will not reduce the strength of the truss.
 - No tubing or channel splices will be permitted within the middle half of the truss structure.
 - Trusses & transverse beams shall be hot dipped galvanized after fabrication and in accordance with ASTM A-123, A-304, A-305 & A-306.
 - All steel hardware & fasteners shall be hot dipped galvanized in accordance with ASTM A-153.
 - Decking & deck spacers shall be Select Structural grade Douglas fir, W.R. Penta or equivalent pressure treated to 0.5 lb. cu. ft. retention, and shall be field drilled to match shop drilled holes in transverse members.

Revised 3-12-73 Hanger linkage
Lumber grade
Penta. retent
Misc. holes, no. & size
Revised 4-7-71. Removed Tension Wires.
ELS
JET

DO NOT SCALE THIS DRAWING - USE DIMENSIONS		
STATE OF ALASKA DEPARTMENT OF PUBLIC WORKS DIVISION OF WATER AND HARBORS		
TYPICAL STEEL GANGWAY CONSTRUCTION DETAILS (SHEET A)		
SCALE As shown	SURVEYED	APPROVED
DESIGNED JT/RB	DRAWN JET	Don Stetter DIRECTOR
CHECKED DSM	DATE Dec. 1970	
PROJECT NUMBER 3-75149	SHEET 6 OF 7	



ASSEMBLY DETAIL
 $3'' = 1'-0''$

NOTES:
 For notes pertaining to fabrication and galvanizing, see Sheet 6.

Revised 1-28-75 Removed 6" pipe ELS

DO NOT SCALE THIS DRAWING - USE DIMENSIONS
 STATE OF ALASKA
 DEPARTMENT OF PUBLIC WORKS
 DIVISION OF WATER AND HARBORS

**TYPICAL STEEL GANGWAY
 TRANSITION PIECE DETAILS
 (SHEET B)**

SCALE As shown	SURVEYED	APPROVED
DESIGNED JET	DRAWN JET	Don Statter
CHECKED DSM	DATE 2-11-74	DIRECTOR
PROJECT NUMBER 3-75149	SHEET 7 OF 7	

