

# STATE OF ALASKA DEPARTMENT OF TRANSPORTATION & PUBLIC FACILITIES

## PLAN AND PROFILE PROPOSED HIGHWAY PROJECT SOS-3(13) & G-31305 THIRD AVENUE-HAINES & F-095-6(6) MAIN STREET - HAINES GRADING, DRAINAGE, & PAVING

INDEX OF SHEETS	
1	TITLE SHEET (THREE JOBS)
2	ESTIMATE OF QUANTITIES(THREE JOBS) & TYP. SECTIONS (F-095-6(6) & G-31305)
3	PLAN & PROFILE (F-095-6(6))
4	TITLE SHEET (SOS-3(13))
5	ESTIMATE OF QUANTITIES & TYPICAL SECTIONS (SOS-3(13))
6-7	PLAN & PROFILE (SOS-3(13))
8	TRAFFIC CONTROL PLAN

THE FOLLOWING STANDARD DRAWINGS SHALL APPLY TO THESE PROJECTS:  
A-1, C-00.04, C-10.04, C-11.04, D-01.00, D-04.00, D-05.00, D-23.02,  
D-26.03, I-20.01, I-40.21, I-60.00, S-05.00, T-20.03, & T-21.03

### DESIGN DESIGNATION

	SOS-3(13)	F-095-6(6)
ADT 1979 =	469	1,593
ADT 2000 =	849	4,438
DHV 12% =	102	15% = 665
D =	45-55	40-60
T =	2%	7%
T.I. =	5.5	8.0
V =	30 M.P.H.	35 M.P.H.

### PROJECT SUMMARY

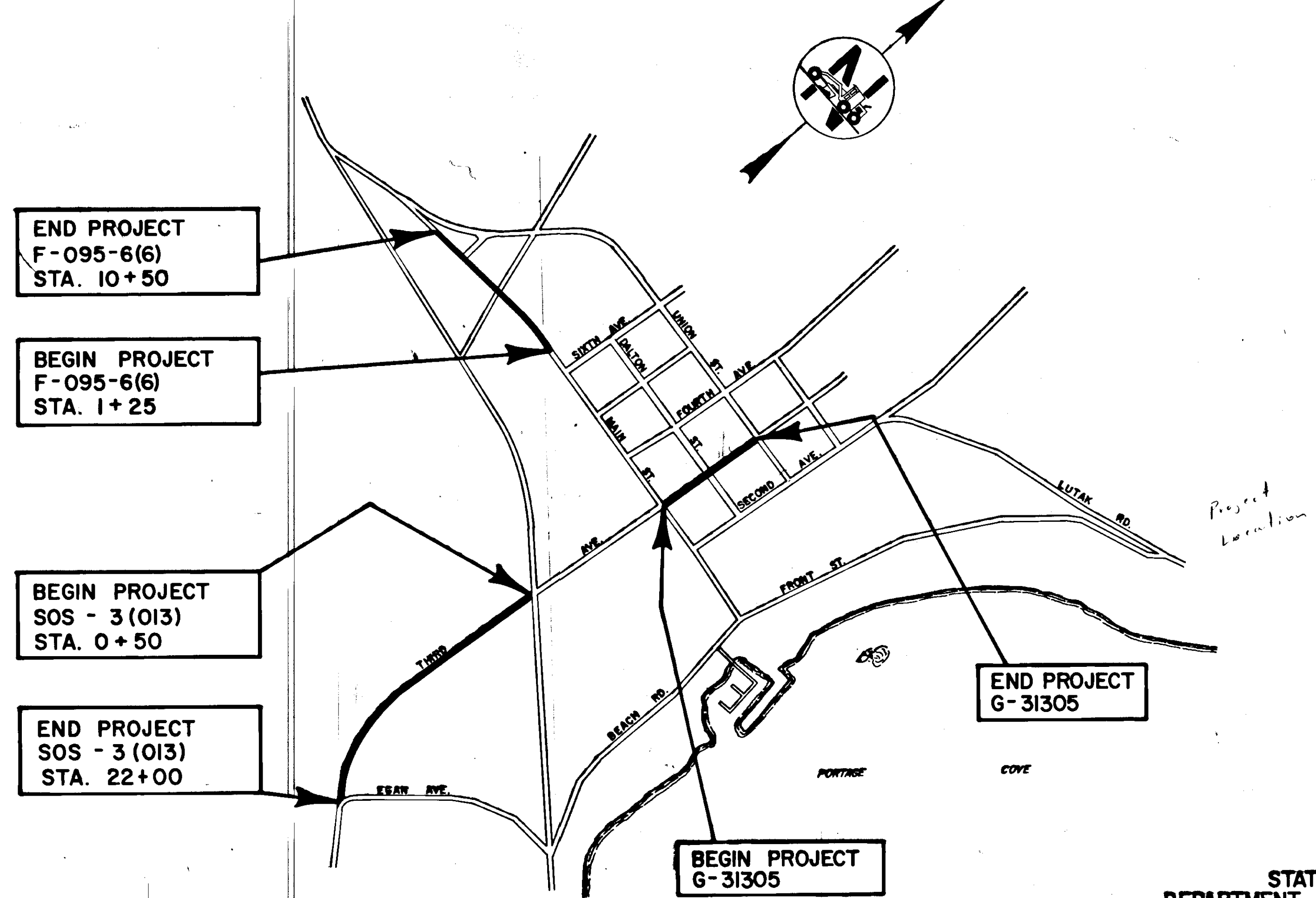
SOS-3(13)  
 WIDTH OF PAVEMENT = 30'  
 LENGTH OF GRADING = 2,150' = 0.407 mi.  
 LENGTH OF PAVEMENT = 2,150' = 0.407 mi.  
 LENGTH OF PROJECT = 2,150' = 0.407 mi.

### F-095-6(6)

WIDTH OF PAVEMENT = 36'  
 LENGTH OF GRADING = 925' = 0.081 mi.  
 LENGTH OF PAVEMENT = 925' = 0.174 mi.  
 LENGTH OF PROJECT = 925' = 0.175 mi.

### G-31305

WIDTH OF PAVEMENT = 36'  
 LENGTH OF PAVEMENT = 723' = 0.137 mi.  
 LENGTH OF PROJECT = 723' = 0.137 mi.



### AS-BUILT PLANS

CONTRACTOR: ASSOCIATED SAND & GRAVEL  
 PROJECT ENGINEER: LARRY GEISE  
 YEAR: 1981

STATE OF ALASKA  
DEPARTMENT OF TRANSPORTATION  
&  
PUBLIC FACILITIES

APPROVED  
*Wallace K. Williams*

DATE 3-17-81

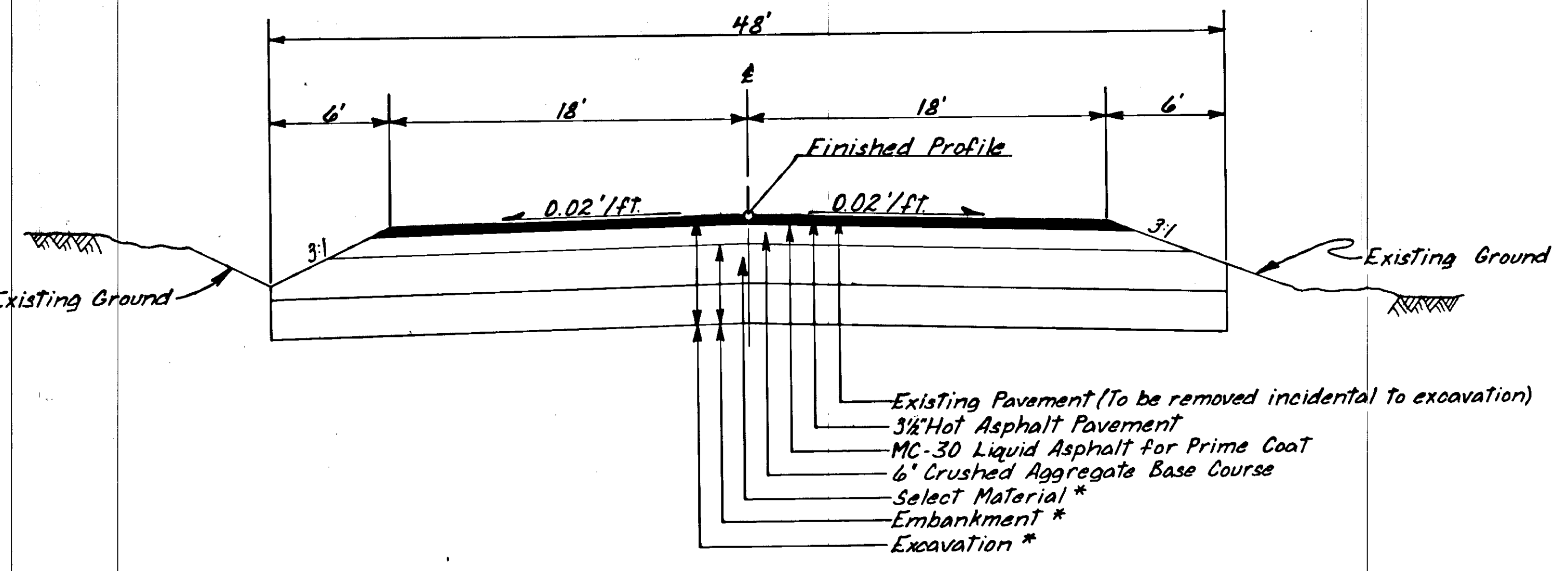
STATE OF ALASKA  
DEPARTMENT OF TRANSPORTATION  
&  
PUBLIC FACILITIES

APPROVED  
*[Signature]*  
DIRECTOR-HIGHWAY DESIGN & CONSTRUCTION

Date 3/21/81

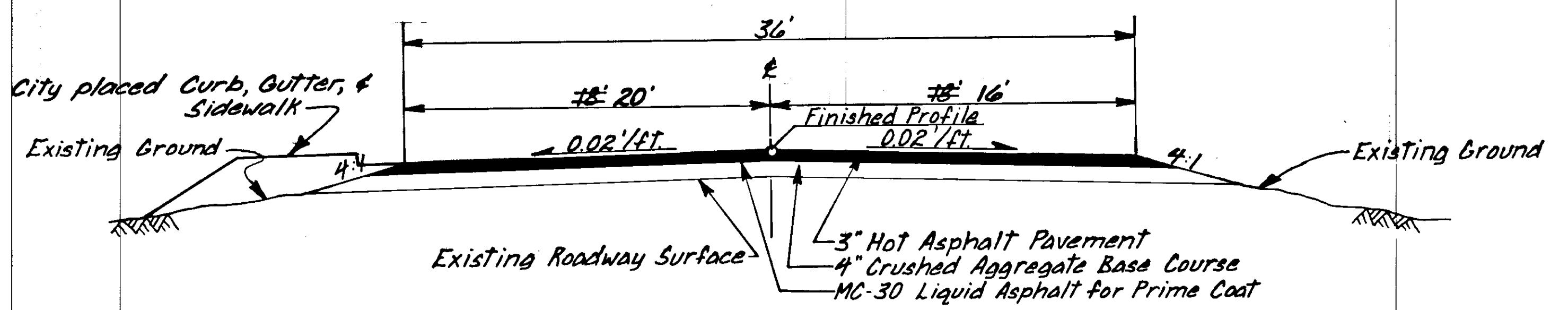
TYPICAL SECTIONS

F-095-6(6)



\* See excavation & embankment summary below.

G-31305



STATION TO STATION	EXCAVATION DEPTH	EMBANKMENT DEPTH	SELECT MATERIAL DEPTH
1+25 To 3+00	19"	9.5"	9.5"
3+00 To 5+40	46"	86.5"	40" *
5+40 To 8+30	42"	32.5"	32.5"
8+30 To 10+50	30"	20.5"	20.5"

\* 40" maximum, may be less based on embankment material used. All organic material shall be wasted.

ESTIMATE OF QUANTITIES

ITEM NO.	ITEM	PAY UNIT	QUANTITY SOS-3(13)	QUANTITY F-095-6(6)	QUANTITY G-31305	TOTAL
1	Furnish & Maintain Engineering Facilities	L.S.				All Required
109(1)	Petroleum Escalation	C.S.				" "
110(1)	Mobilization	L.S.				" "
111(1)	Temporary Erosion & Pollution Control	C.S.				" "
114(1)	Construction Engineering by the Contractor	L.S.				" "
115(1)	Traffic Maintenance	L.S.				" "
201(3B)	Clearing & Grubbing	L.S.	1.12 Acres	0	0	All Required
202(4)	Removal & Disposal of Culvert Pipe	L.F.	0	136	0	136
203(3)	Unclassified Excavation	C.Y.	3,300	6,500	0	9,800
203(5D)	Embankment *	C.Y.	4,100	5,400	0	9,700
301(1)	Crushed Aggregate Base Course	TON	3,100	1,530	740	5,340
401(1)	Hot Asphalt Pavement (Class I)	TON	970	790	530	1,950
401(2)	AC-5 Asphalt Cement	TON	59	48	32	118
403(1)	MC-30 Liquid Asphalt for Prime Coat	TON	8	3.7	2.9	14.6
603(22G)	24" Pipe Conduit	L.F.	90	136	0	226
604(3)	Adjust Existing Manholes	EA.	6	0	1	7
604(5)	Inlets (Type A)	EA.	1	0	0	1
609(2)	Standard Curb & Gutter	L.F.	455	0	0	455
628(1)	Adjust Existing Valve Boxes	EA.	2	0	0	2
635(1)	Insulation Board	L.S.	3.6 M.B.M.	0	0	All Required
670(1)	Painted Traffic Markings	L.S.	4500' Yellow & 3400' White Sh.	705' Yellow & 1840' White Sh.	0	All Required

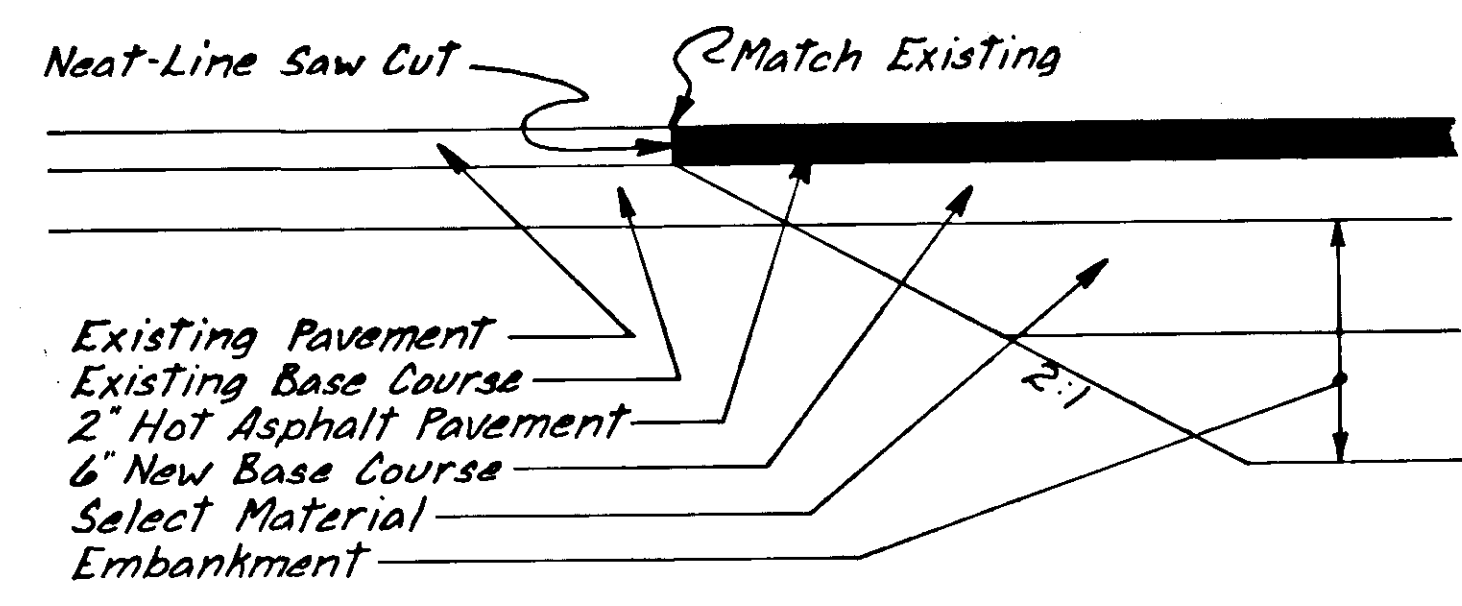
\* Embankment includes select material, 2,200 C.Y. on 3<sup>RD</sup> Ave. & 3840 C.Y. on Main St.

BASIS OF ESTIMATE

ITEM NO.	ITEM	ESTIMATING FACTOR
301(1)	Crushed Agg. Base Course	2.09 Tons/C.Y.
401(1)	Hot Asph. Pave. (Class I)	121 Lbs./Sq. Yd./In. Depth
401(2)	AC-5 Asphalt Cement	6% of Item 401(1A)
403(1)	MC-30 Liquid Asph. Prime	0.25 Gal./Sq. Yd. - 25% Gal./Ton

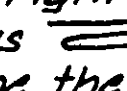
GENERAL NOTES

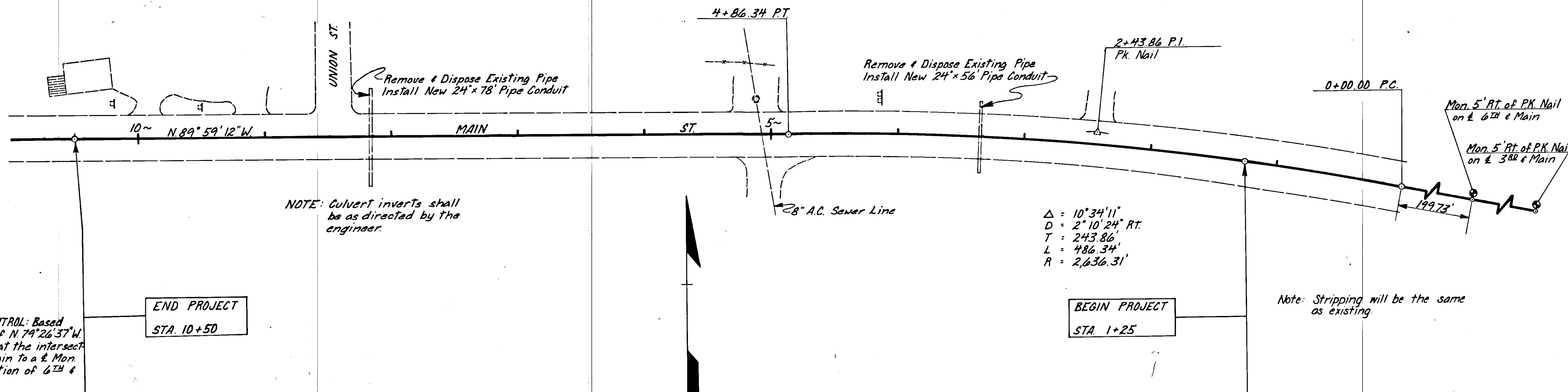
1. Grade & alignment shown on the plans are subject to minor revisions.
2. Culvert lengths & locations are approx. only & are subject to minor revisions.
3. The existing pavement shall be removed incidental to Item 203(3) Unclassified Excavation.
4. The contractor shall have the option of using Thermoplastic striping in place of painted traffic markings at no additional cost to the state.
5. The contractor shall coordinate his work with the city & shall have prior approval before closing or detouring any traffic over any side street.
6. Existing signs in the way of construction shall be removed & relocated in accordance with Standard Drawing S-05.00. This work shall be considered incidental to other items of work.
7. Select material quantities are included in embankment quantities & no separate measurement or payment shall be made.



F-095-6(6) & G-31305  
PAVEMENT TRANSITION DETAIL  
Sta. 1+25 & Sta. 10+50

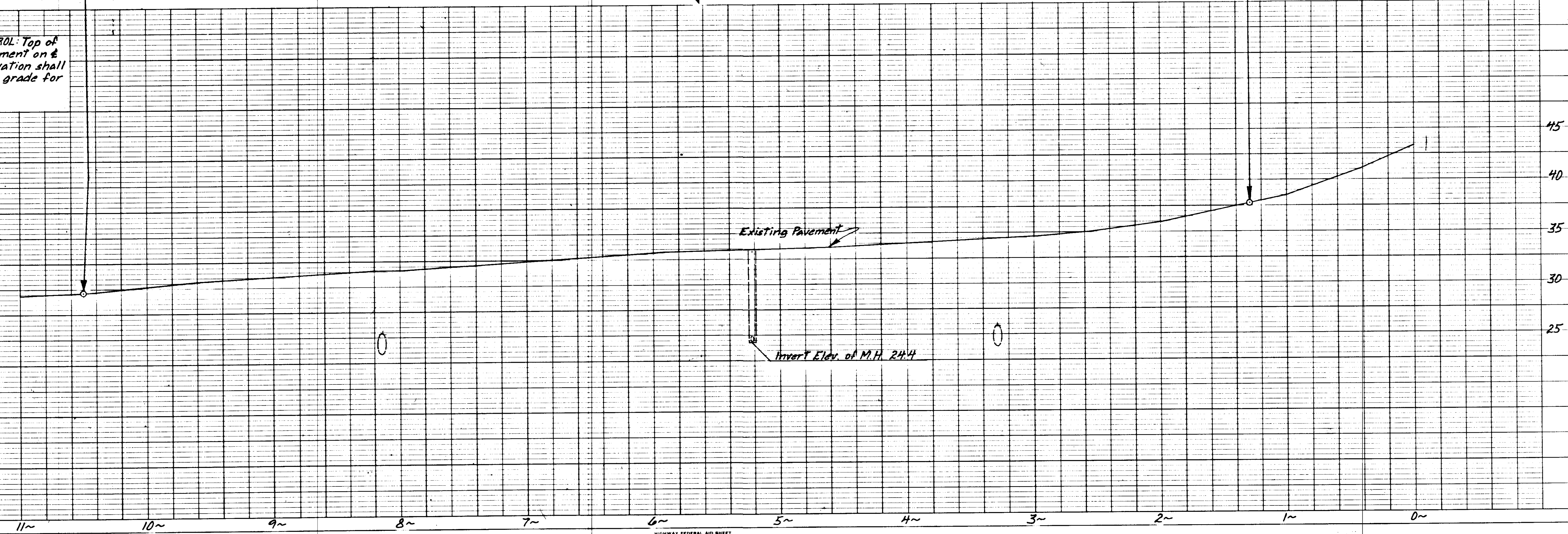
STATE	PROJECT DESIGNATION	YEAR	SHEET NO.	TOTAL SHEETS
ALASKA	F-095-6(6)	1981	3	8

NOTE: An armoured telephone cable buried 18" to 36" in depth is near the right shoulder of the road. It may be looped thus  in places to appear as 3 cables. It shall be the contractor's responsibility to locate & protect this cable.



HORIZONTAL CONTROL: Based on a bearing of  $N. 79^\circ 26' 37" W.$  from a  $\pm$  mon. at the intersection of 3<sup>RD</sup> & Main to a  $\pm$  Mon. at the intersection of 6<sup>TH</sup> & Main.

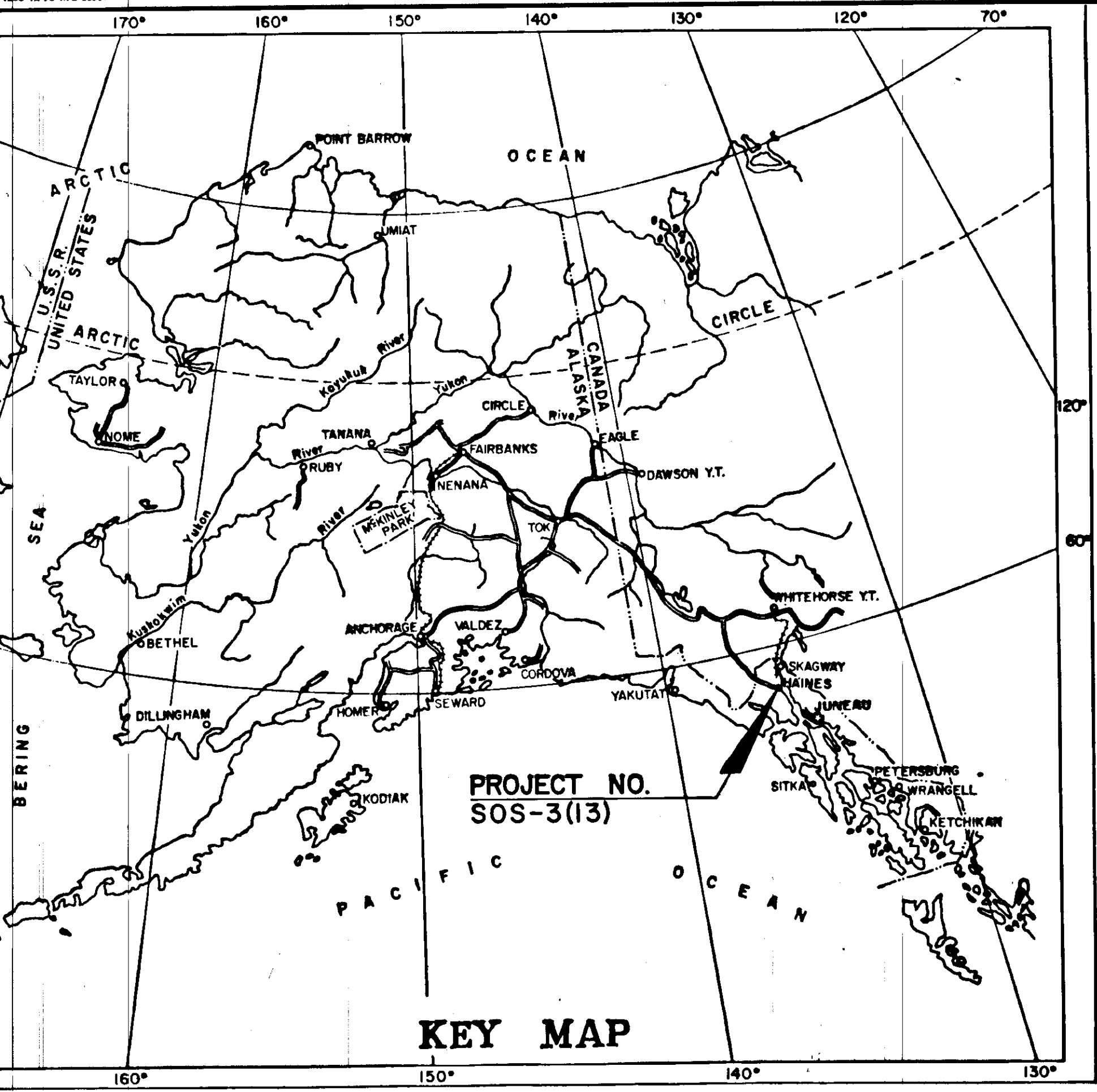
VERTICAL CONTROL: Top of existing pavement on  $\pm$  prior to excavation shall be the final grade for this project.



# STATE OF ALASKA DEPARTMENT OF TRANSPORTATION & PUBLIC FACILITIES

## PLAN AND PROFILE PROPOSED HIGHWAY PROJECT SOS-3(13)

### THIRD AVENUE IMPROVEMENTS GRADING, PAVING, & DRAINAGE

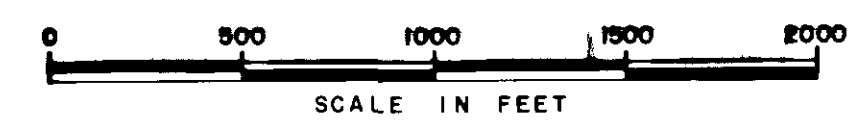
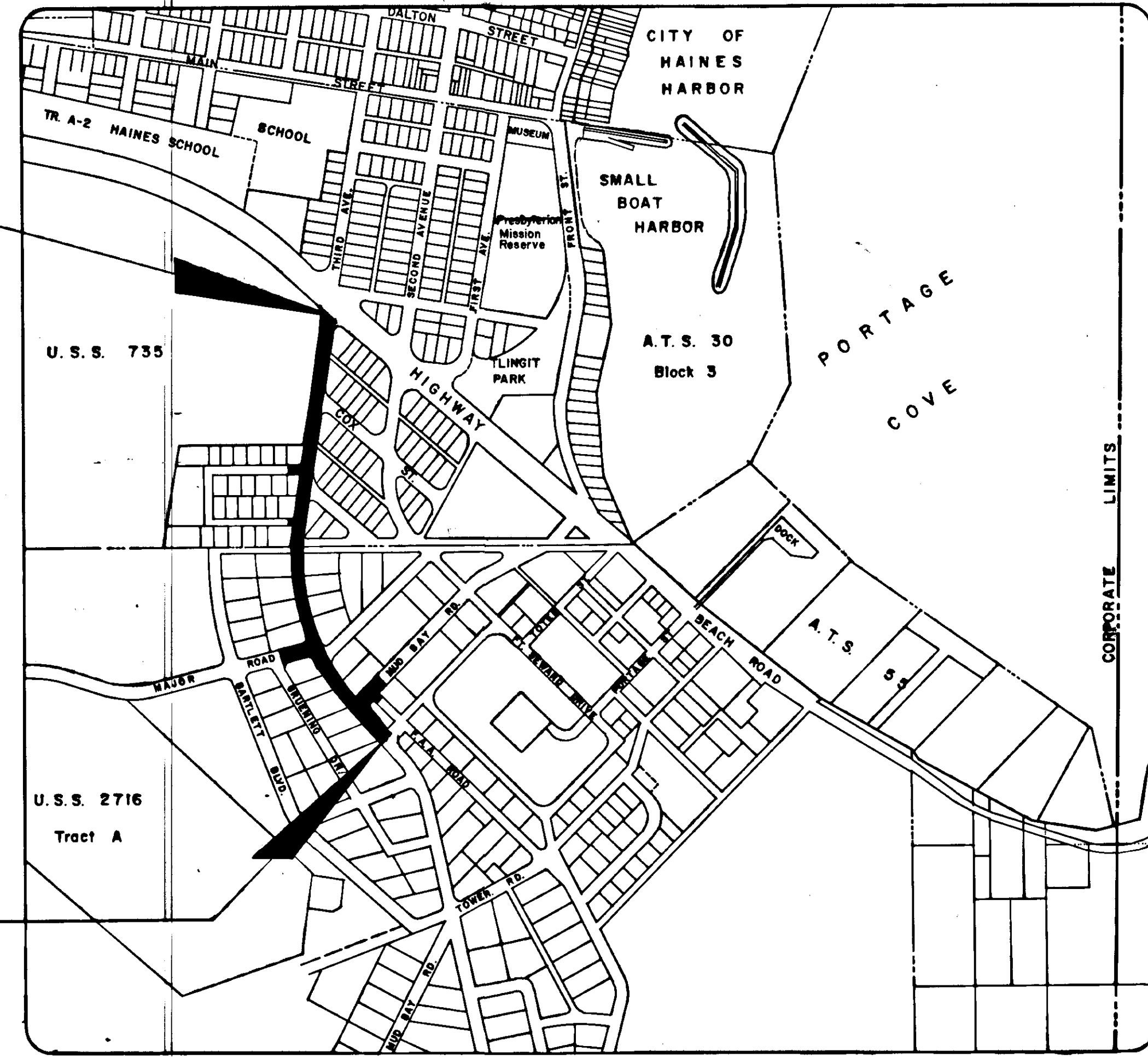
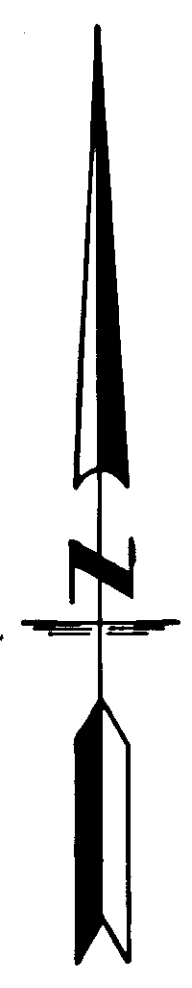


INDEX OF SHEETS	
SHT. NO.	DESCRIPTION
1	TITLE SHEET
2	TYPICAL SECTION & QUANTITIES
3-4	PLAN & PROFILE

STANDARD DRAWINGS: A-1, C-00.04, C-10.05, C-11.05, D-01.00, D-04.00, D-05.00, D-25.01, D-26.03, I-20.01, I-40.21, I-60.00, S-05.00, T-20.03, T-21.03.

BEGIN PROJ. NO. SOS-3(13) STA. 0+50.00

END PROJ. NO. SOS-3(13) STA. 22+00.00



**DESIGN DESIGNATION**

ADT 1979 - 469  
ADT 2000 - 849  
DHV 12% - 102  
D = 55-45  
T = 2%  
T.I. = 5.5

**PROJECT SUMMARY**

WIDTH OF PAVEMENT	30'
LENGTH OF PROJECT	= 2,150' or 0.41 Miles

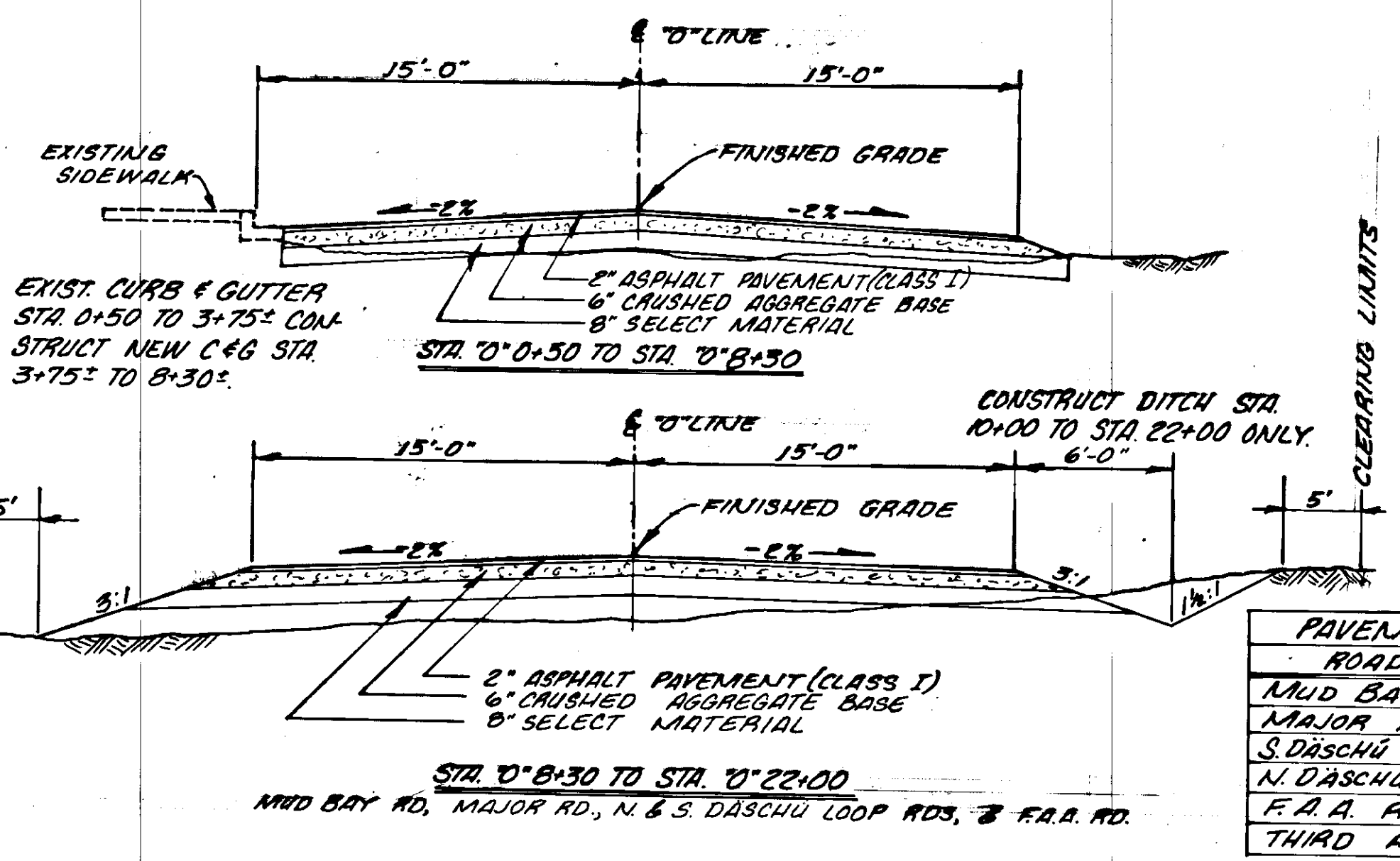


em ps  
consulting engineering  
JUNEAU, ALASKA

ITEM NO.	ITEM	FACTORS
301(1)	CRUSHED AGGREGATE BASE	2.09 TON PER CU. YD.
401(1)	HOT ASPHALT PAVEMENT	121 LB'S PER SQ. YD./IN. DEPTH
401(2)	A.C.-5 ASPHALT CEMENT	6% OF 401(1A)
403(1)	M.C.-30 PRIME COAT	0.25 GAL. PER SQ. YD. 256 GAL. PER TON

LOCATION	ITEM
"0" 0+35 3' LT.	VALVE BOX
"0" 4+47 3' LT.	MANHOLE(SANITARY)
"0" 7+50 4' LT.	MANHOLE(SANITARY)
"0" 10+33 6' LT.	MANHOLE(SANITARY)
"0" 10+76 20' LT.	VALVE BOX
"0" 16+30 16' LT.	MANHOLE(WATER)
"0" 17+60 15' RT.	MANHOLE(SANITARY)
"0" 20+44 15' RT.	MANHOLE(SANITARY)

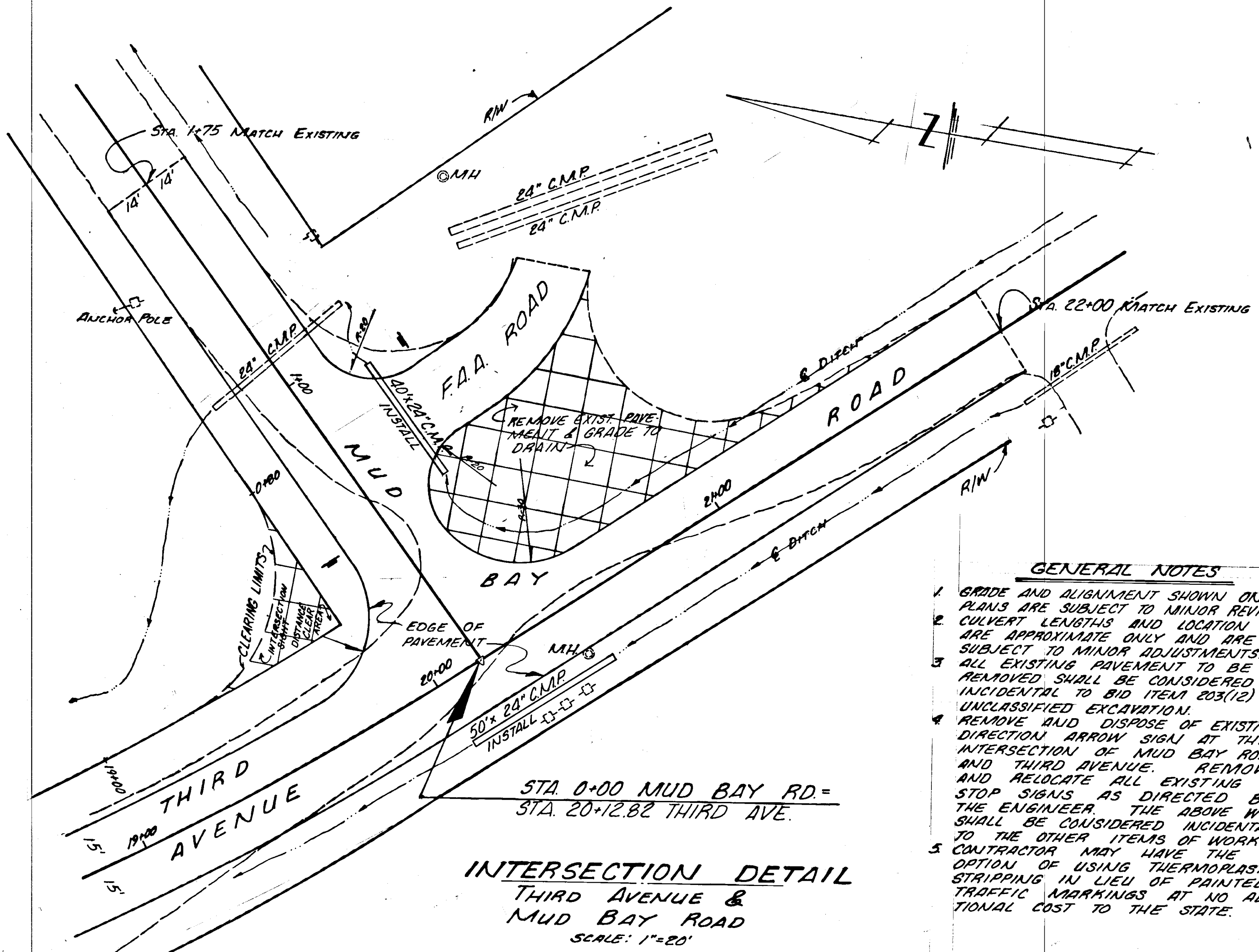
**TYPICAL SECTIONS**  
THIRD AVENUE



ROAD NAME	FEET
MUD BAY ROAD	28
MAJOR ROAD	20
S. DASCHU LOOP ROAD	24
N. DASCHU LOOP ROAD	24
F.A.A. ROAD	24
THIRD AVENUE	30

ITEM NO.	ITEM	UNIT	QUANTITY
1	MAINTAIN & FURNISH ENGINEERING FACILITIES	L.S.	ALL REQ'D
109(1)	PETROLEUM ESCALATION	C.S.	ALL REQ'D
110(1)	MOBILIZATION	L.S.	ALL REQ'D
111(1)	TEMPORARY EROSION & POLLUTION CONTROL	C.S.	ALL REQ'D
114(1)	CONSTRUCTION ENGINEERING BY CONTRACTOR	L.S.	ALL REQ'D
115(1)	TRAFFIC MAINTENANCE	L.S.	ALL REQ'D
201(3B)	CLEARING & GRUBBING	L.S.	ALL REQ'D
203(3)	UNCLASSIFIED EXCAVATION	C.Y.	3,300
203(5D)	EMBANKMENT	C.Y.	4,100
301(1)	CRUSHED AGGREGATE BASE COURSE	TON	3,100
401(1)	HOT ASPHALT PAVEMENT, CLASS I	TON	970
401(2)	A.C.-5 ASPHALT CEMENT	TON	59
403(1)	M.C.-30 LIQUID ASPHALT FOR PRIME COAT	TON	8
603(226)	24 INCH PIPE CONDUIT	L.F.	90
604(4)	ADJUST EXISTING MANHOLE	EA.	6
604(5)	INLET, TYPE A	EA.	1
609(2)	STANDARD CURB AND GUTTER	L.F.	465
628(11)	ADJUST EXISTING VALVE BOX	EA.	2
635(1)	INSULATION BOARD	L.S.	ALL REQ'D
670(1)	PAINTED TRAFFIC MARKINGS	L.S.	7,900

ITEM NO.	ITEM	UNIT	QUANTITY
201(3B)	CLEARING AND GRUBBING	ACRE	1.12
635(1)	Insulation Board	M.B.M.	3.6
670(1)	Painted Traffic Markings, Yellow (2)	L.F.	4,500
670(1)	Painted Traffic Markings, White (Shoulder)	L.F.	3,400



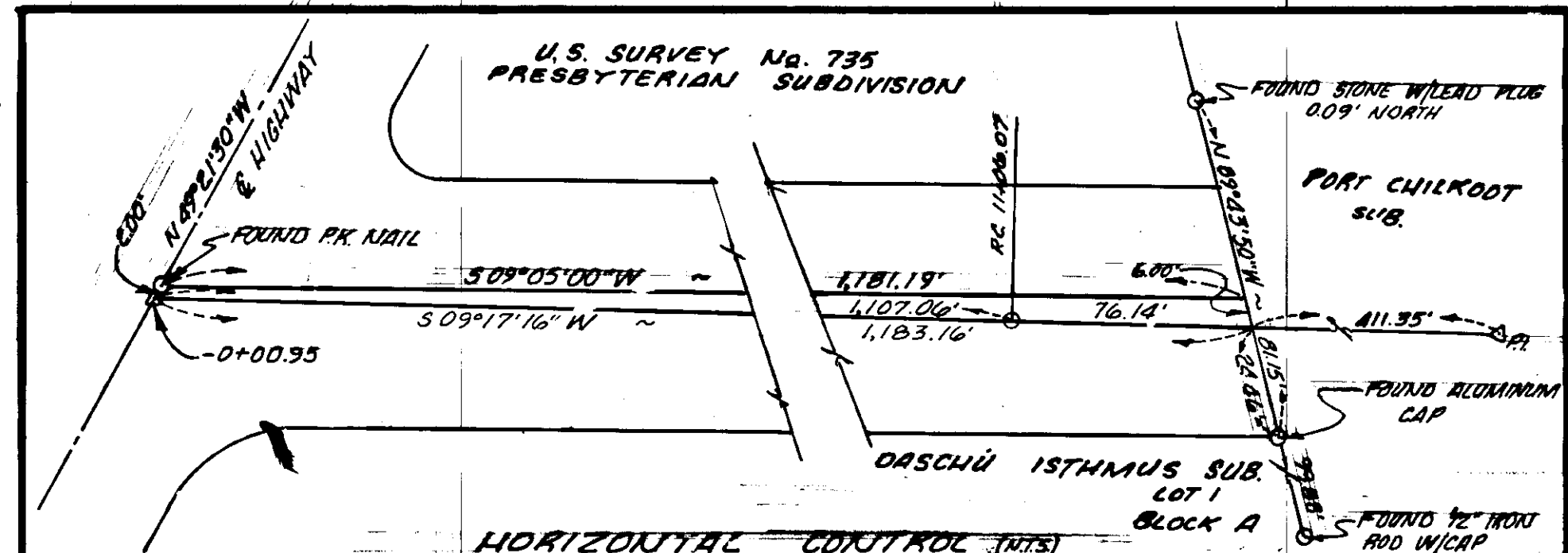
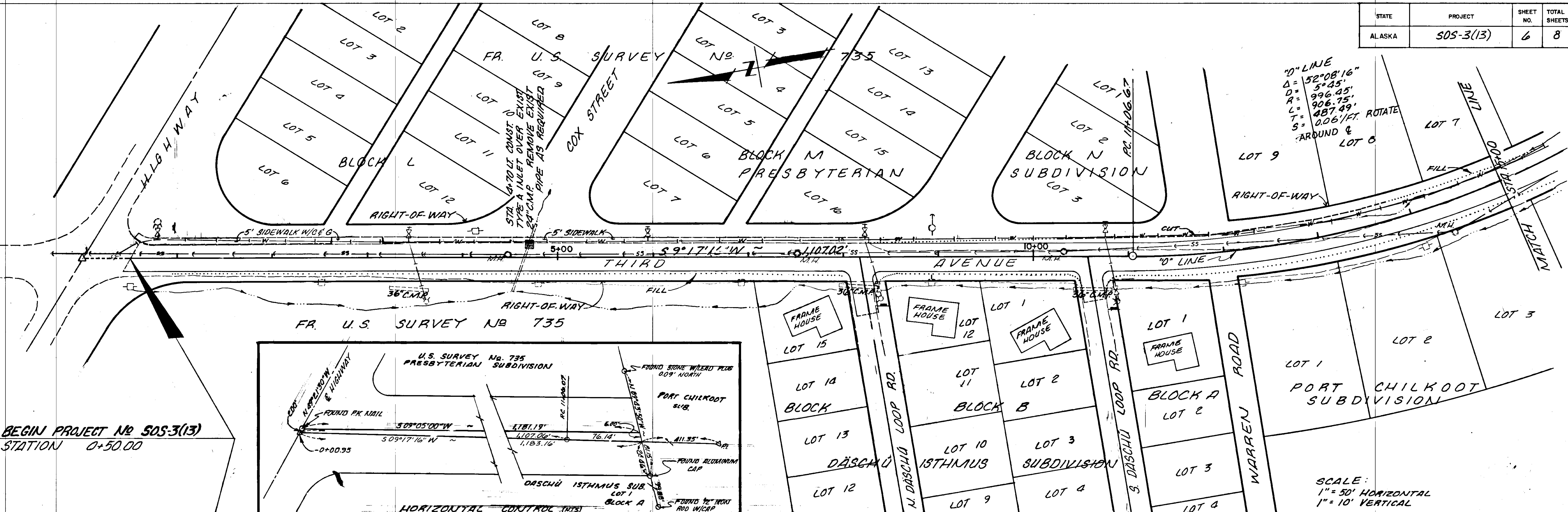
STA. 0+00 MUD BAY RD. =  
STA. 20+12.82 THIRD AVE.

**INTERSECTION DETAIL**  
THIRD AVENUE &  
MUD BAY ROAD  
SCALE: 1"=20'

- GENERAL NOTES**
- GRADE AND ALIGNMENT SHOWN ON PLANS ARE SUBJECT TO MINOR REVISIONS.
  - CULVERT LENGTHS AND LOCATION ARE APPROXIMATE ONLY AND ARE SUBJECT TO MINOR ADJUSTMENTS.
  - ALL EXISTING PAVEMENT TO BE REMOVED SHALL BE CONSIDERED INCIDENTAL TO BID ITEM 203(12) UNCLASSIFIED EXCAVATION.
  - REMOVE AND DISPOSE OF EXISTING DIRECTION ARROW SIGNS AT THE INTERSECTION OF MUD BAY ROAD AND THIRD AVENUE. REMOVE AND RELOCATE ALL EXISTING STOP SIGNS AS DIRECTED BY THE ENGINEER. THE ABOVE WORK SHALL BE CONSIDERED INCIDENTAL TO THE OTHER ITEMS OF WORK.
  - CONTRACTOR MAY HAVE THE OPTION OF USING THERMOPLASTIC STRIPPING IN LIEU OF PAINTED TRAFFIC MARKINGS AT NO ADDITIONAL COST TO THE STATE.



STATE	PROJECT	SHEET NO.	TOTAL SHEETS
ALASKA	SOS-3(13)	6	8



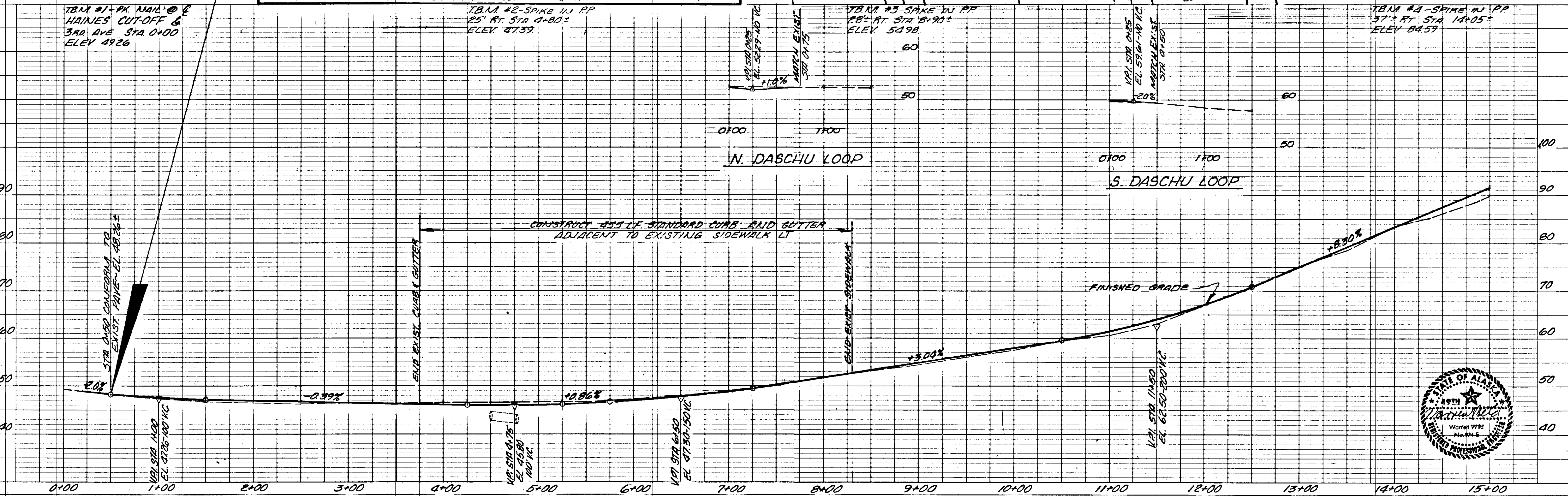
BEGIN PROJECT NO SOS-3(13)  
STATION 0+50.00

TBM #1 - PK NAIL @ HAINES CUT-OFF & 3RD AVE STA 0+00 ELEV 4926

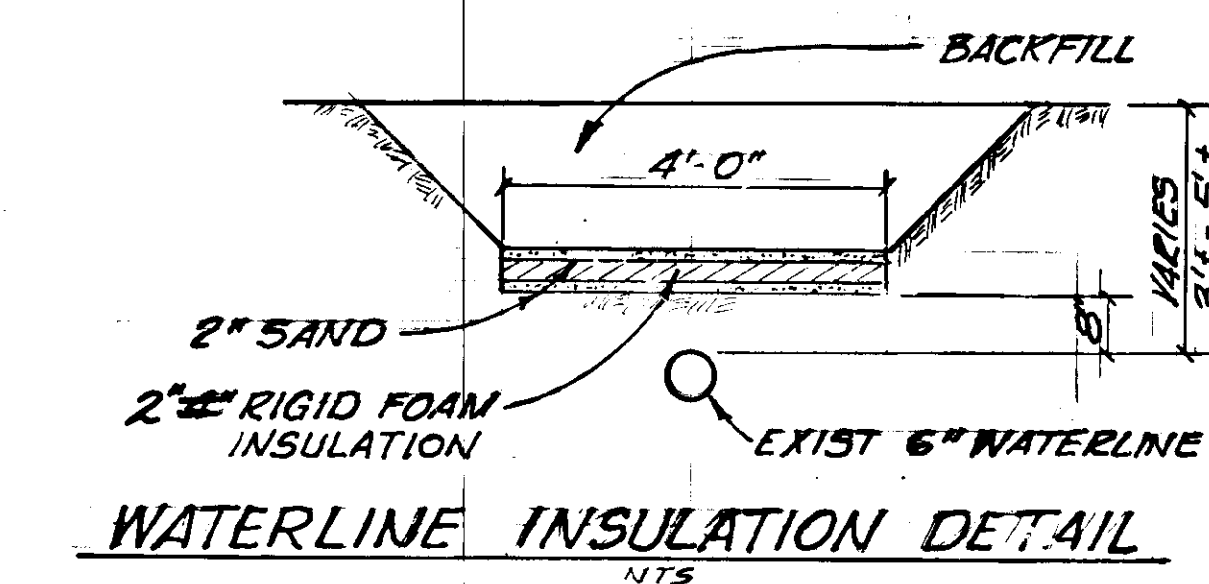
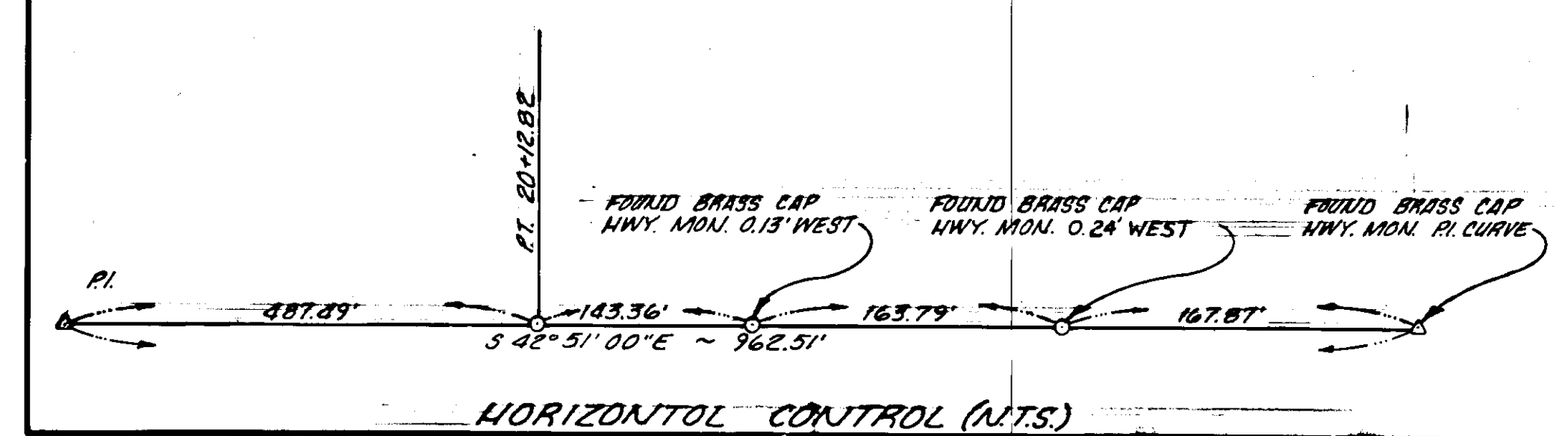
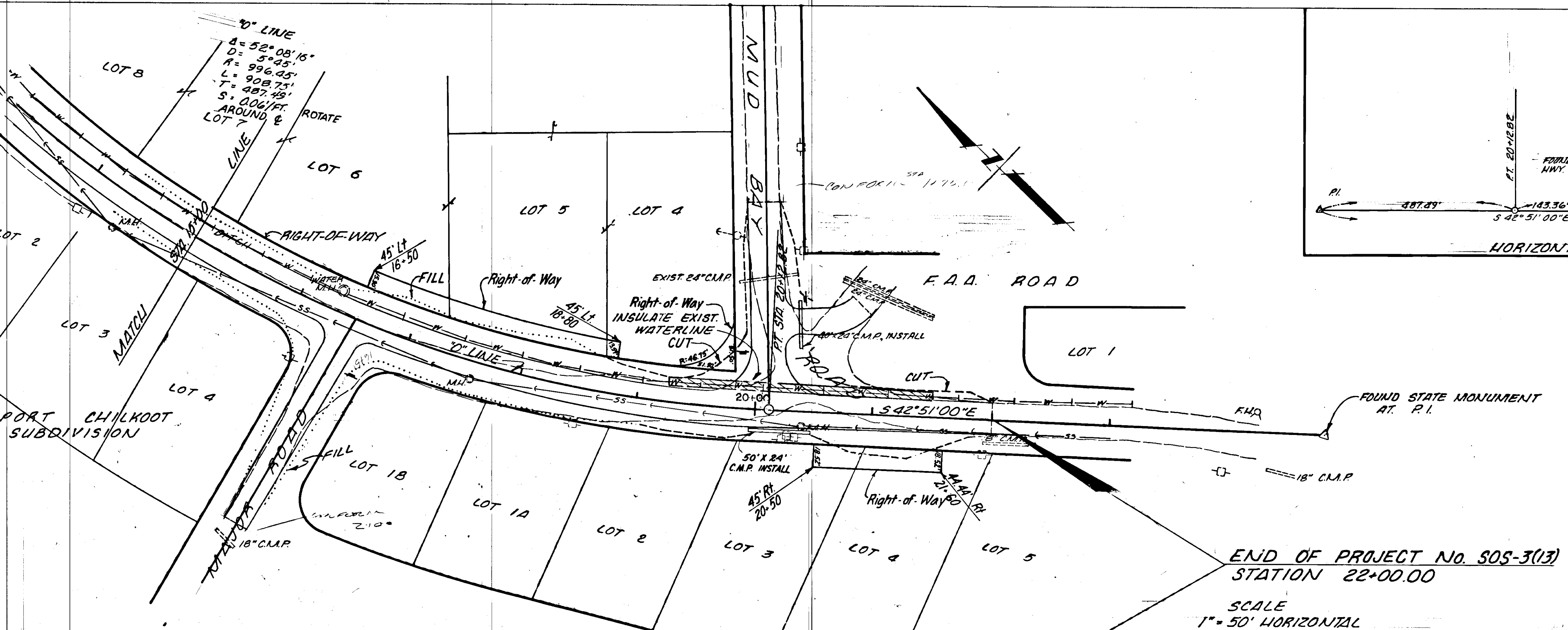
TBM #2 - SPIKE IN PP 25' RT. STA 4+80.5 ELEV 4739

TBM #3 - SPIKE IN PP 28' RT. STA 8+90.5 ELEV 5498

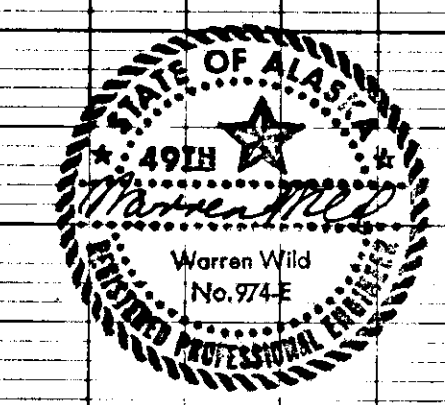
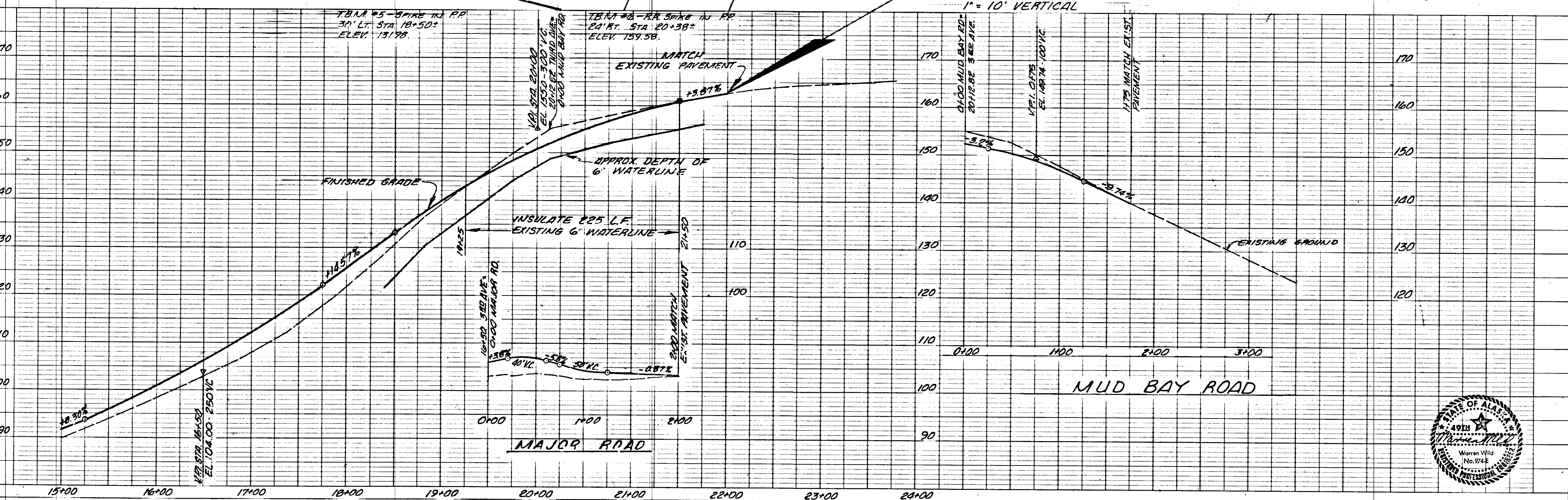
TBM #4 - SPIKE IN PP 37' RT. STA 14+05.5 ELEV 8459



STATE	PROJECT	SHEET NO.	TOTAL SHEETS
ALASKA	SOS-3(13)	7	8

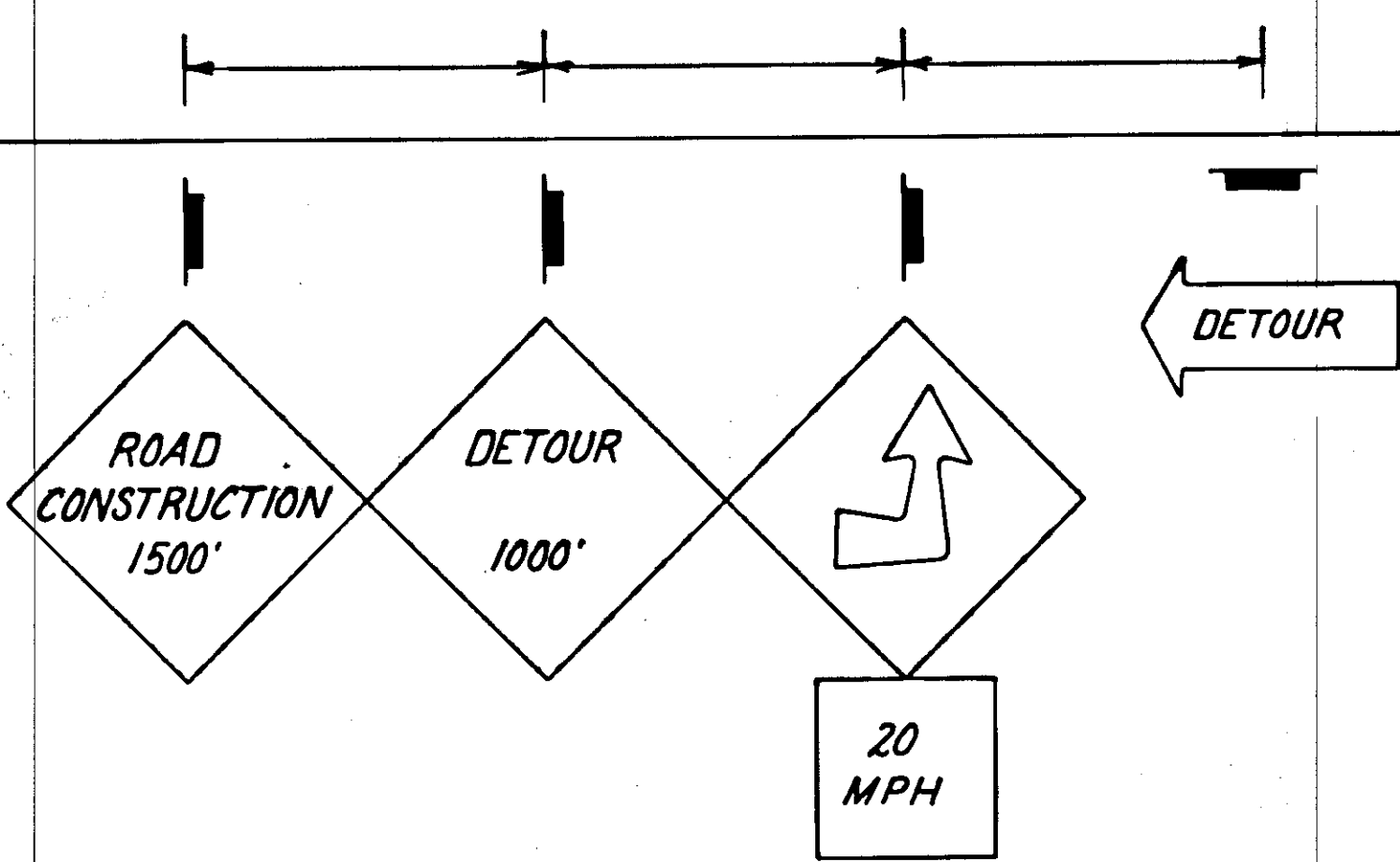
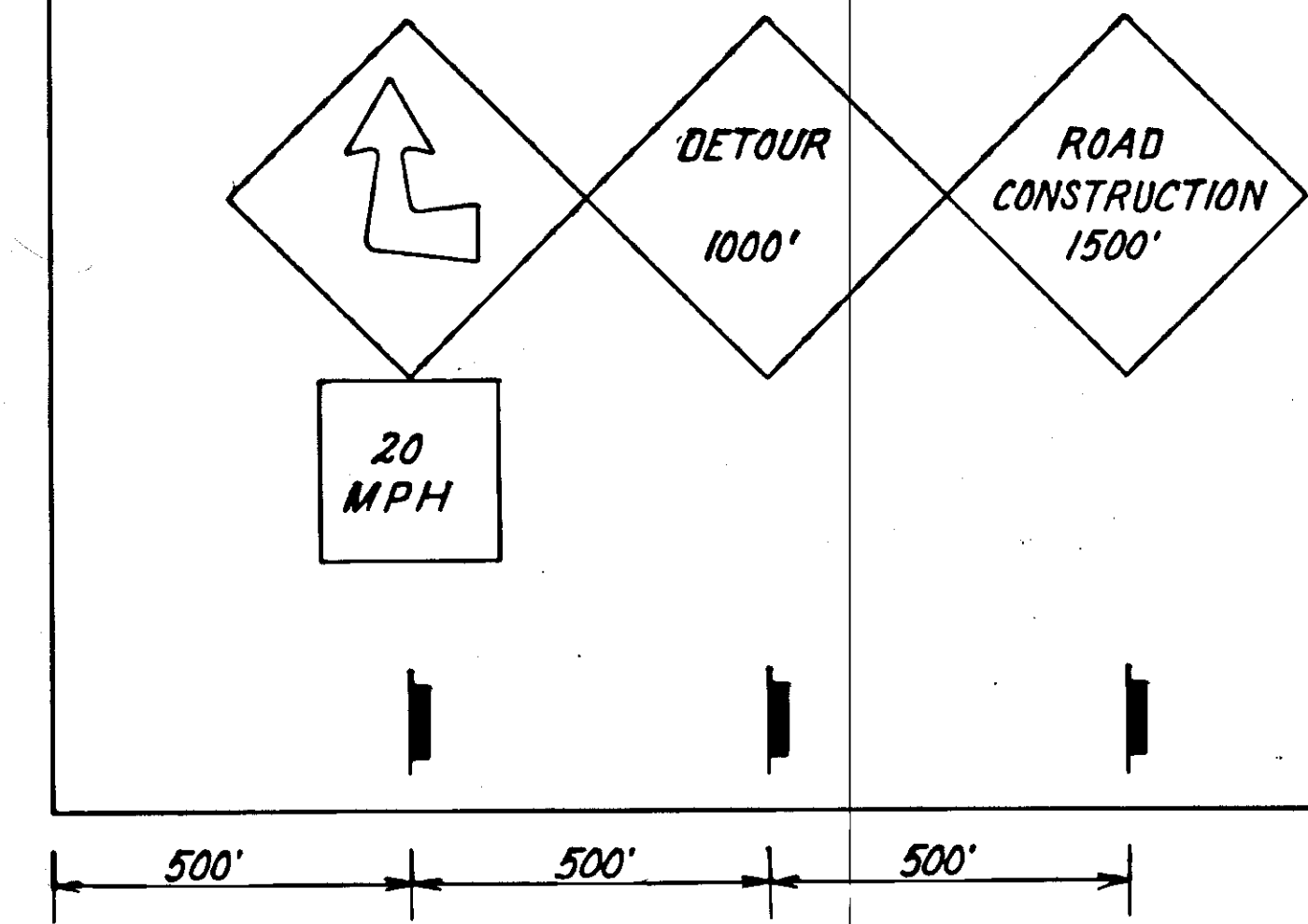
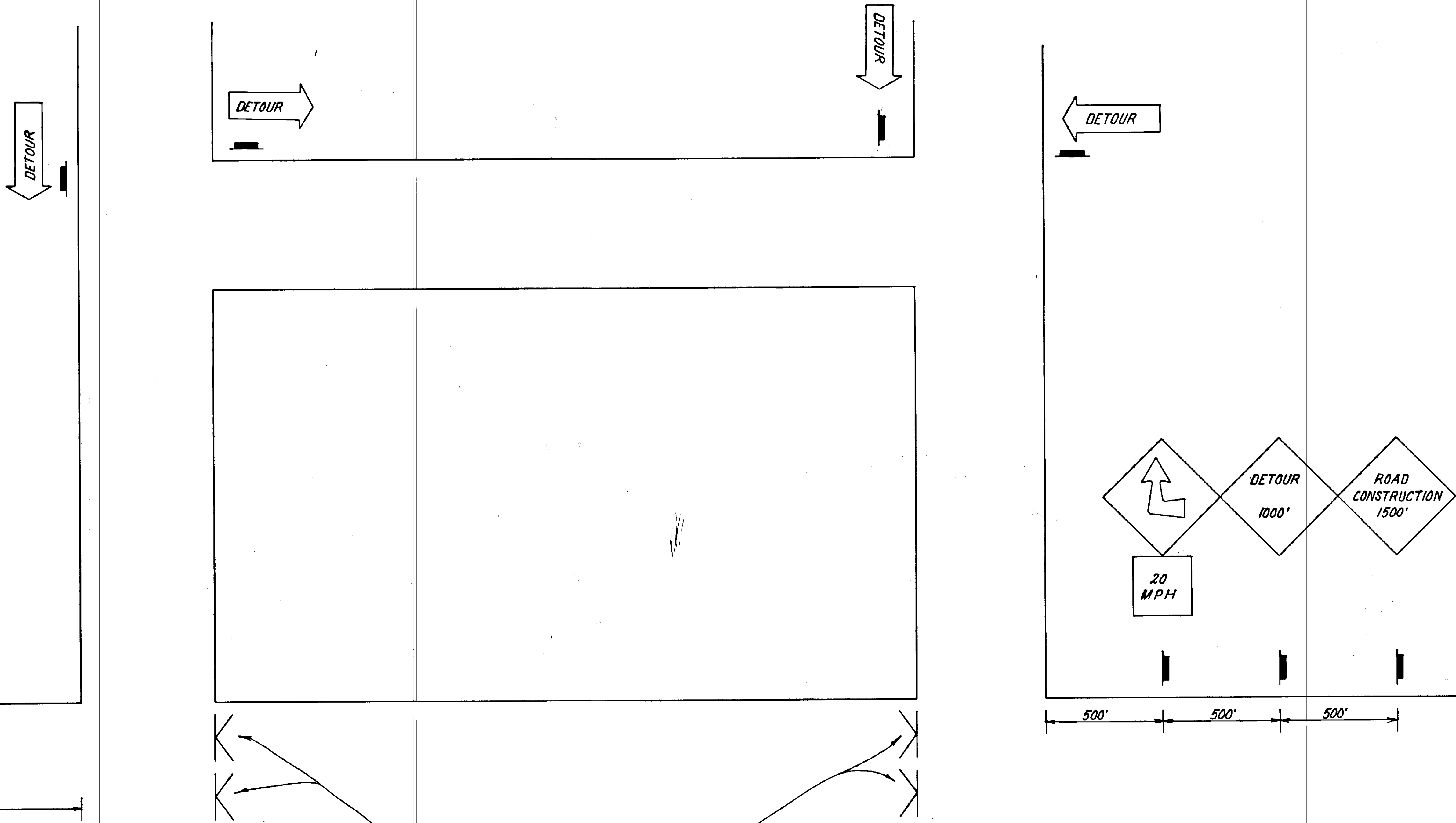


END OF PROJECT No. SOS-3(13)  
STATION 22+00.00  
SCALE  
1" = 50' HORIZONTAL  
1" = 10' VERTICAL



STATE	PROJECT DESIGNATION	YEAR	SHEET NO.	TOTAL SHEETS
ALASKA	SOS-3(13) & G-31305 & F-095-6(6)	1981	8	8

TRAFFIC CONTROL PLAN



ROAD  
CLOSED  
DETOUR

Note: Mount on barricade

Legend: K - Barricade Type III

Note: The Contractor shall maintain all detours.