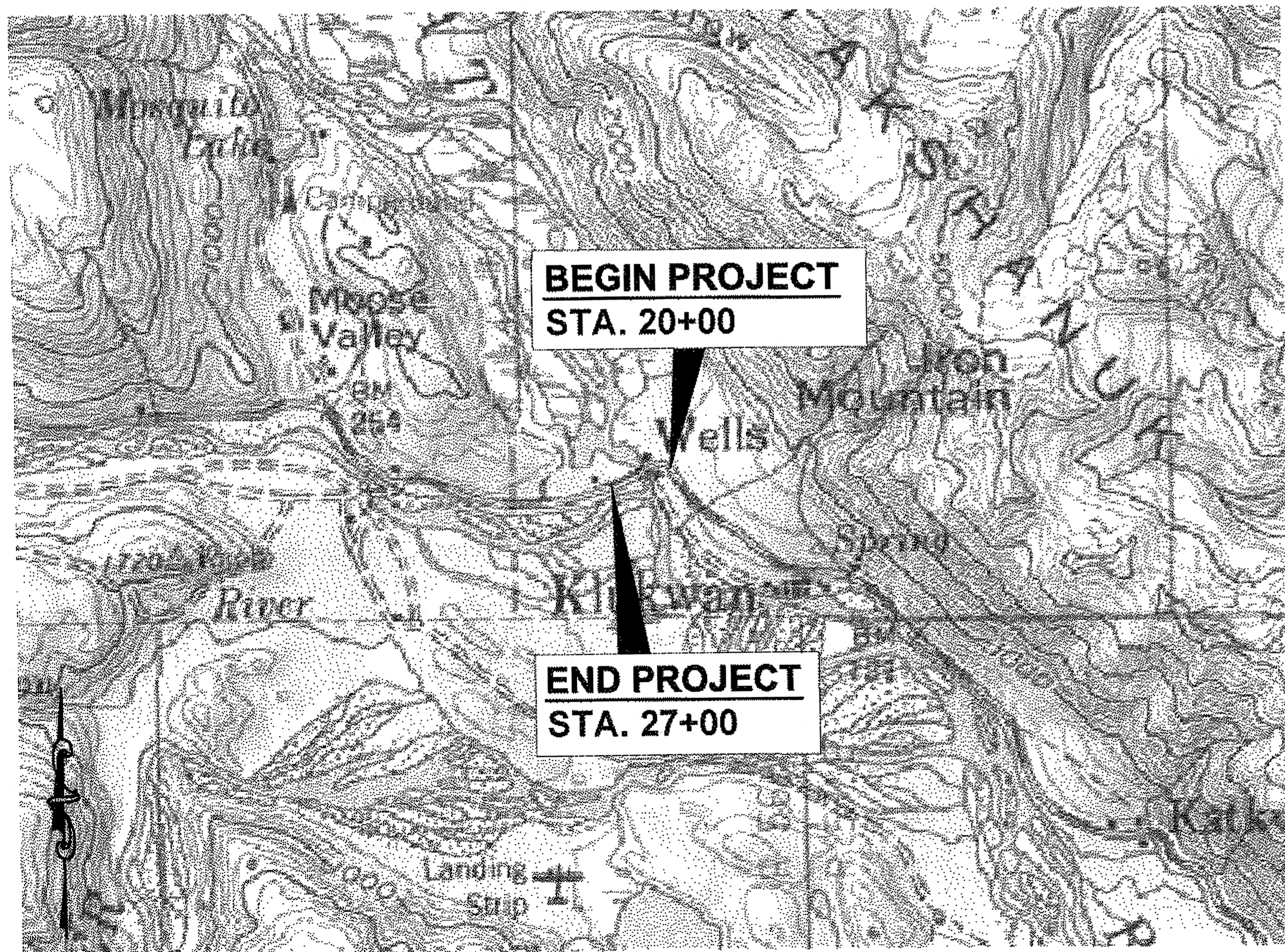


# State of Alaska

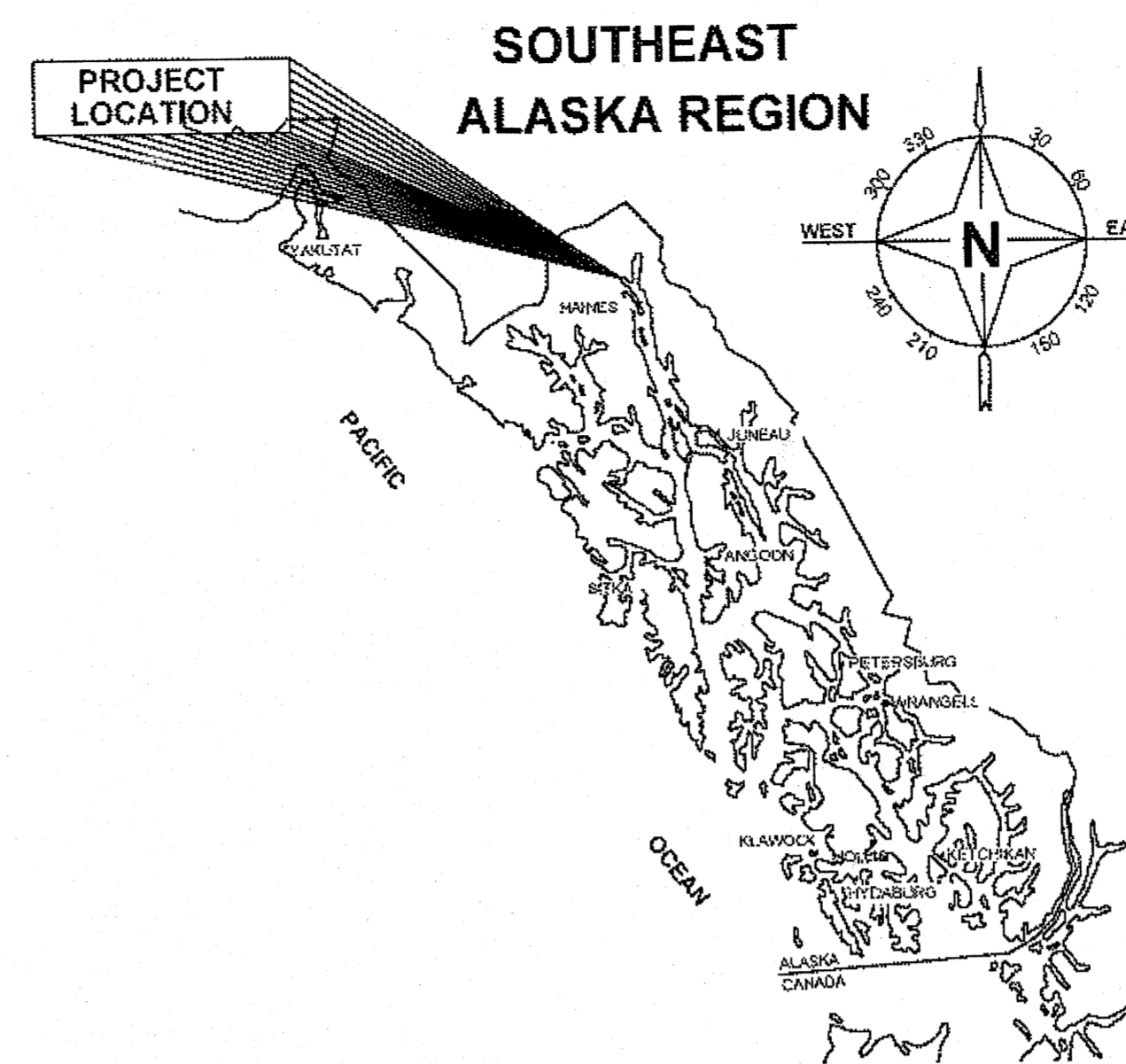
Department of Transportation  
and Public Facilities  
SOUTHEAST REGION

## HAINES, ALASKA HAINES-FAIRBANKS PIPELINE BRIDGE DEMOLITION

MP 23.3 TO MP 23.8  
PROJECT No. 69924



VICINITY MAP



### INDEX

SHEET NO.	DESCRIPTION
A1	COVER SHEET
A2	LEGEND, ESTIMATE OF QUANTITIES, AND SUMMARY SHEET
A3	SURVEY CONTROL
B1	TYPICAL CROSS SECTION
F1	SITE PLAN & PROFILE
E1	DETAILS
J1	TRAFFIC CONTROL PLAN
J2	TRAFFIC CONTROL PLAN
S1	EROSION & SEDIMENT CONTROL PLAN
S2	EROSION & SEDIMENT CONTROL DETAILS

### AS-BUILT DRAWINGS

CONTRACTOR : TRUGANO CONSTRUCTION COMPANY, INC.  
PROJECT ENGINEER : JEREMY L STEPHENS  
NOTICE TO PROCEED : 2/8/13  
PROJECT START DATE : 3/11/13  
PROJECT END DATE : 3/30/13  
SUBCONTRACTORS : NONE

PATH: P:\PROJECTS\ID59119\DESIGN\BRIDGE DEMOLITION\DDM-HH-PIPELINE.DWG TAB:A1  
Thursday, December 13, 2012 10:22:19 AM  
PLOT: PSPACE OR MSPACE: 1=1(F)

STATE OF ALASKA  
DEPARTMENT OF TRANSPORTATION  
& PUBLIC FACILITIES  
SOUTHEAST REGION



APPROVED: *Chuck Correa* 1-14-13  
REGIONAL PRE-CONSTRUCTION ENGINEER DATE  
CHUCK CORREA, P.E.

APPROVED: *Albert Clough* 1-14-2013  
DIRECTOR, SOUTHEAST REGION DATE  
ALBERT CLOUGH, CPG

CERTIFIED TRUE & CORRECT AS-BUILT OF ACTUAL FIELD  
CONDITION:  
*Maura A. Hansen* 10-28-13  
CONSTRUCTION PROJECT MANAGER DATE

STATE	PROJECT DESIGNATION	YEAR	SHEET NO.	TOTAL SHEETS
ALASKA	69924	2013	A1	10

4/9/13

RECOVERED

PRIMARY MON. [BRASS/AL CAP]	⊕
SECONDARY CORNER	○
PRIMARY CENTERLINE MONUMENT	⊕
SECONDARY CENTERLINE MONUMENT	●
PROJECT RIGHT-OF-WAY LINE	—————
EXISTING PROPERTY LINE	—————
MEANDER LINE OF RECORD	-----
EXISTING CENTERLINE	————— 27+00 +
EXISTING ROADWAY	————— —————
EXISTING GRAVEL SHOULDER	----- -----
EXISTING GUARD RAIL	○ ○ ○ ○
RIVER	~~~~~
TELEPHONE (DIRECT BURY)	— T — T —
ELECTRIC (DIRECT BURY)	— E —
FIBER OPTIC	— FO —
SIGN (FACING)	◀ <u>EXISTING</u> <u>PROPOSED</u>

GENERAL NOTES:

1. THE CONTRACTOR SHALL UTILIZE MEANS AND METHODS THAT MINIMIZE DISTURBANCE TO THE CHILKAT RIVER FLOODPLAIN, AND SHALL NOT PLACE FILL BELOW ORDINARY HIGH WATER.
2. THE CONTRACTOR SHALL NOT UTILIZE PRIVATE PROPERTY TO ACCESS THE CHILKAT RIVER FLOODPLAIN OR AS A STAGING AREA FOR MATERIALS AND EQUIPMENT, UNLESS WRITTEN PERMISSION IS OBTAINED FROM THE LANDOWNER BY THE CONTRACTOR, AND SUBMITTED TO THE ENGINEER PRIOR TO UTILIZATION OF THE PRIVATE PROPERTY BY THE CONTRACTOR.
3. THE CONTRACTOR IS RESPONSIBLE FOR OBTAINING ALL NECESSARY OVERLOAD PERMITS TO WORK FROM THE CHILKAT RIVER BRIDGE (BRIDGE NUMBER 742). SEE SPECIAL PROVISIONS SECTION 202 FOR MORE DETAILS.
4. THE CONTRACTOR SHALL UTILIZE MEANS AND METHODS TO PREVENT DEBRIS FROM PIPELINE BRIDGE DEMOLITION ACTIVITIES FROM FALLING INTO THE CHILKAT RIVER FLOODPLAIN. THIS INCLUDES CONTAINMENT OF DEBRIS FROM HOT AND COLD PIPE CUTTING ACTIVITIES, DEBRIS FROM WELDING TO EXISTING PIPE AND SUPPORT PILES, AND CONTAINMENT OF ANY FUGITIVE DEBRIS FROM WITHIN SEGMENTS OF PIPE REMOVED WHILE OVER THE CHILKAT RIVER FLOODPLAIN.
5. THE CONTRACTOR SHALL COMPLY WITH THE CONDITIONS OF ALL DOT&PF AND CONTRACTOR OBTAINED PERMITS FOR THIS WORK.

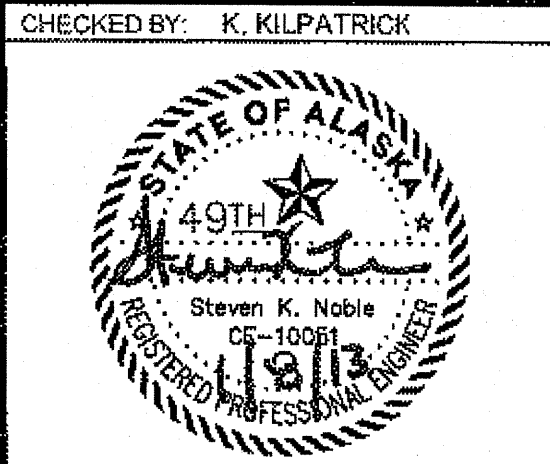
ESTIMATE OF QUANTITIES

ITEM NUMBER	PAY ITEM	PAY UNIT	QUANTITY
202(13)	REMOVAL AND DISPOSAL OF EXISTING PIPELINE BRIDGE	LUMP SUM	ALL REQUIRED ✓
640(4)	WORKER MEALS AND LODGING, OR PER DIEM	LUMP SUM	ALL REQUIRED ✓

ITEM 202(13) REMOVAL OF EXISTING PIPELINE BRIDGE

SHEET	FROM STATION	TO STATION	OFFSET	LENGTH	REMARKS
F1	20+97 ✓	26+29 ✓	23' RT ✓	APPROX 530'± ✓	8" PIPE AND ABANDONED UTILITIES CONTAINED WITHIN ✓
F1/B1			23' RT ✓		11 EACH H-FRAME PIPE SUPPORTS ✓
F1/B1	20+97 ✓	26+29 ✓	20' RT ✓	APPROX 530'± ✓	WIRE AND CONDUIT ✓
F1			20' RT ✓		CLEARING AND GRUBBING AS REQUIRED
F1/E1			23' RT ✓		2 EACH CUT AND CAP ABANDONED ENDS OF PIPELINE ✓

DO NOT SCALE FROM THESE DRAWINGS USE DIMENSIONS



STATE OF ALASKA  
DEPARTMENT OF TRANSPORTATION  
& PUBLIC FACILITIES  
SOUTHEAST REGION

**HAINES - FAIRBANKS  
PIPELINE BRIDGE  
DEMOLITION  
PROJECT #69924**

LEGEND, ESTIMATE OF  
QUANTITIES, AND SUMMARY SHEET

DESIGNED BY:	S. NOBLE
DRAWN BY:	B. O'QUINN
PATH:	P:\PROJECTS\1059119\DESIGN\BRIDGE DEMOLITION\DDM-HH-PIPELINE.DWG
TAB:	A2      Monday, January 07, 2013 11:44:46 AM      BURNETT, R. JEFF
PROJECT DESIGNATION	69924
YEAR	2013
SHEET NO.	A2
TOTAL SHEETS	10

NOTES:

1. ALL OTHER WORK ITEMS PERFORMED IN SUPPORT OF REMOVAL OF EXISTING PIPELINE BRIDGE ARE SUBSIDIARY TO THE PAY ITEM 202(13) REMOVAL OF EXISTING PIPELINE BRIDGE AND NO OTHER PAYMENT WILL BE MADE.

OS  
4/9/13

**HORIZONTAL CONTROL AND TRANSFORMATION PARAMETERS**

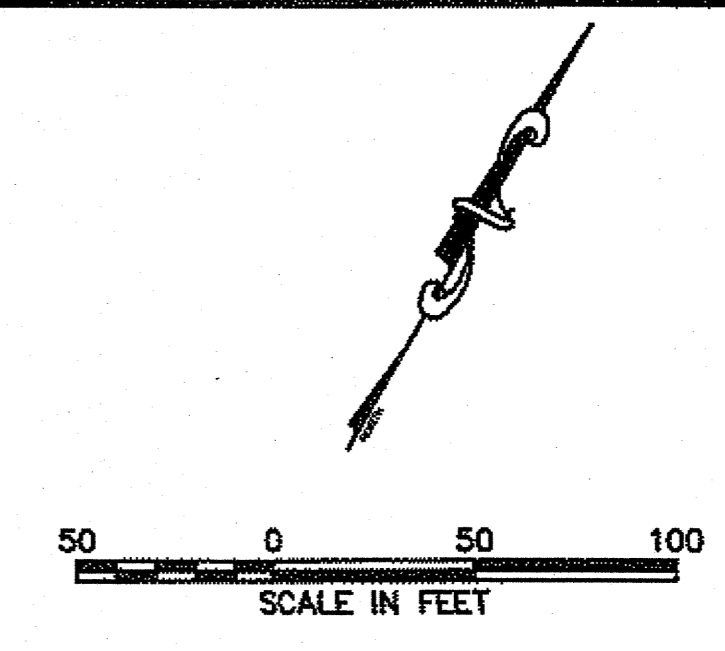
THE BASIS OF HORIZONTAL CONTROL IS "HNS-D", A PRIMARY AIRPORT CONTROL STATION, 3.5" BRASS CAP LOCATED IN BEDROCK ADJACENT TO HAINES HIGHWAY NEAR THE NORTHWESTERLY END OF THE AIRPORT ACCESS ROAD. NGS PUBLISHED COORDINATES NAD83 (1992)  
 LATITUDE: 59°14'53.13661"N  
 LONGITUDE: 135°32'03.05281"W  
 ELLIPSOID HT: 16.353M

THE BASIS OF BEARING FOR THIS PROJECT IS THE GEODETIC BEARING OF S 50°56'51" E FROM HNS-D TO HNS-A. THIS BEARING WAS DERIVED FROM GPS AND CONVENTIONAL OBSERVATIONS PLUS THE APPLIED CONVERGENCE ANGLE OF -1°34'03.84" DESCRIBED BELOW

THE HAINES 4-24 GRID IS BASED ABOUT NGS MONUMENT HNS-A, A 3.5" BRASS CAP LOCATED IN A 6" X 3" CONCRETE PAD NEAR THE HOLD BAR ON TAXIWAY B. THE GRID SYSTEM RELATES TO AKSPC ZONE 1 NAD83(1992) THROUGH THE FOLLOWING PARAMETERS:  
 ZONE=NAD83 AKSPC ZONE 1  
 GRID SCALE=0.99995319  
 CONVERGENCE=-1°34'03.84"  
 TRANSLATION ABOUT HNS-A AS FOLLOWS:  
 AKSPC NORTHING=2711876.83845 FT US  
 AKSPC EASTING= 2337586.75087 FT US  
 LOCAL NORTHING=500000.0000 FT US  
 LOCAL EASTING= 700000.0000 FT US

**VERTICAL CONTROL**

THE BASIS OF VERTICAL CONTROL IS THE 3 1/4" BRASS CAP USACE BENCHMARK "HH-1" WITH A PUBLISHED ELEVATION OF 25.63' ABOVE MLLW. SOURCE OF ELEVATION IS CORPS OF ENGINEERS HARBOR PLAT 2509-08. MONUMENT IS LOCATED APPROXIMATELY 80' BACK FROM END OF HARBOR JETTY.



PATH:P:\PROJECTS\ID59119\DESIGN\BRIDGE DEMOLITION\DDM-HH-PIPELINE.DWG

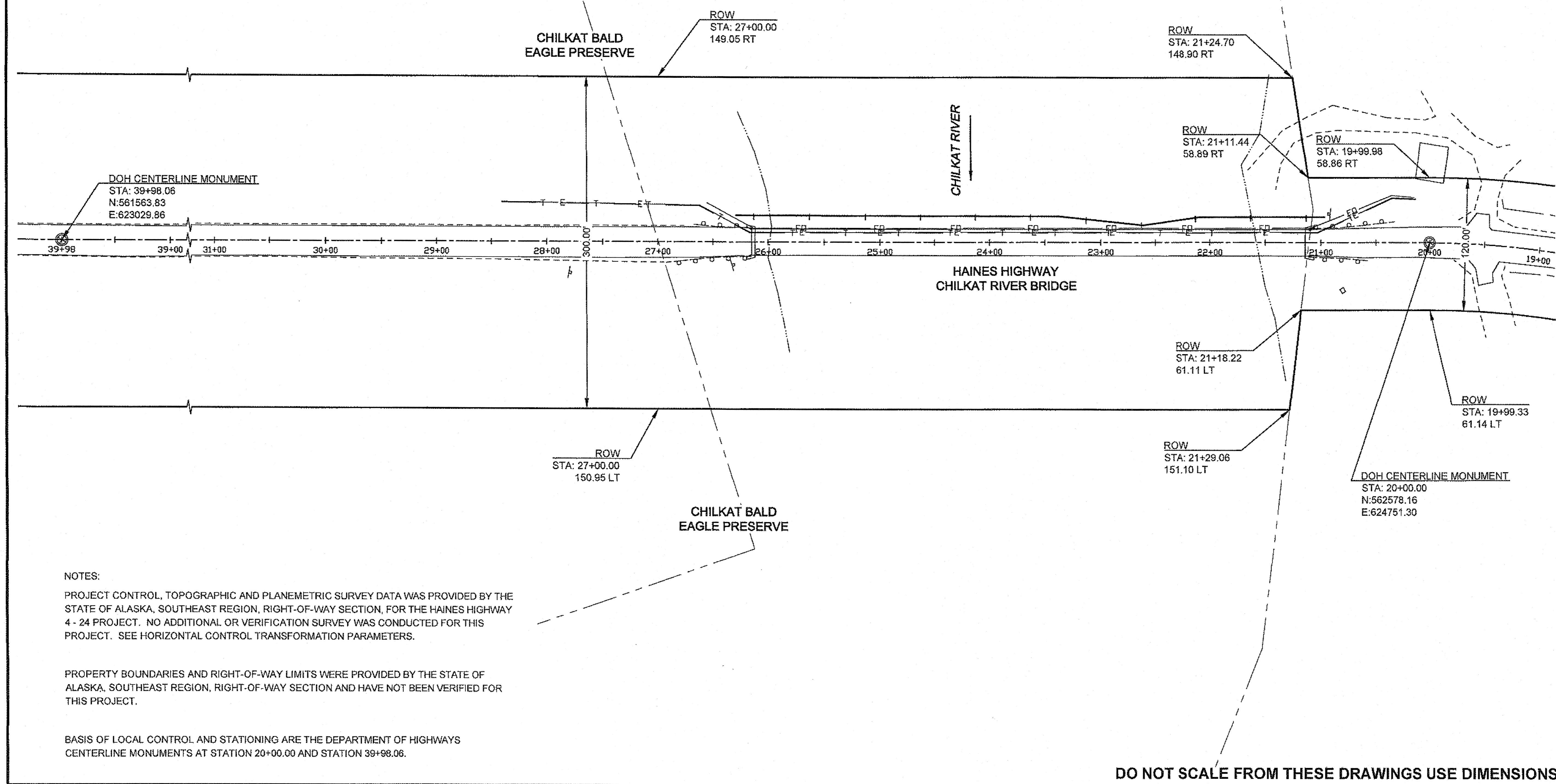
BURNETT, R. JEFF  
 TAB: A3 Monday, January 07, 2013 11:45:34 AM

ADDENDUM NUMBER

ATTACHMENT NUMBER

RECORD OF REVISIONS

No.	DATE	DESCRIPTION

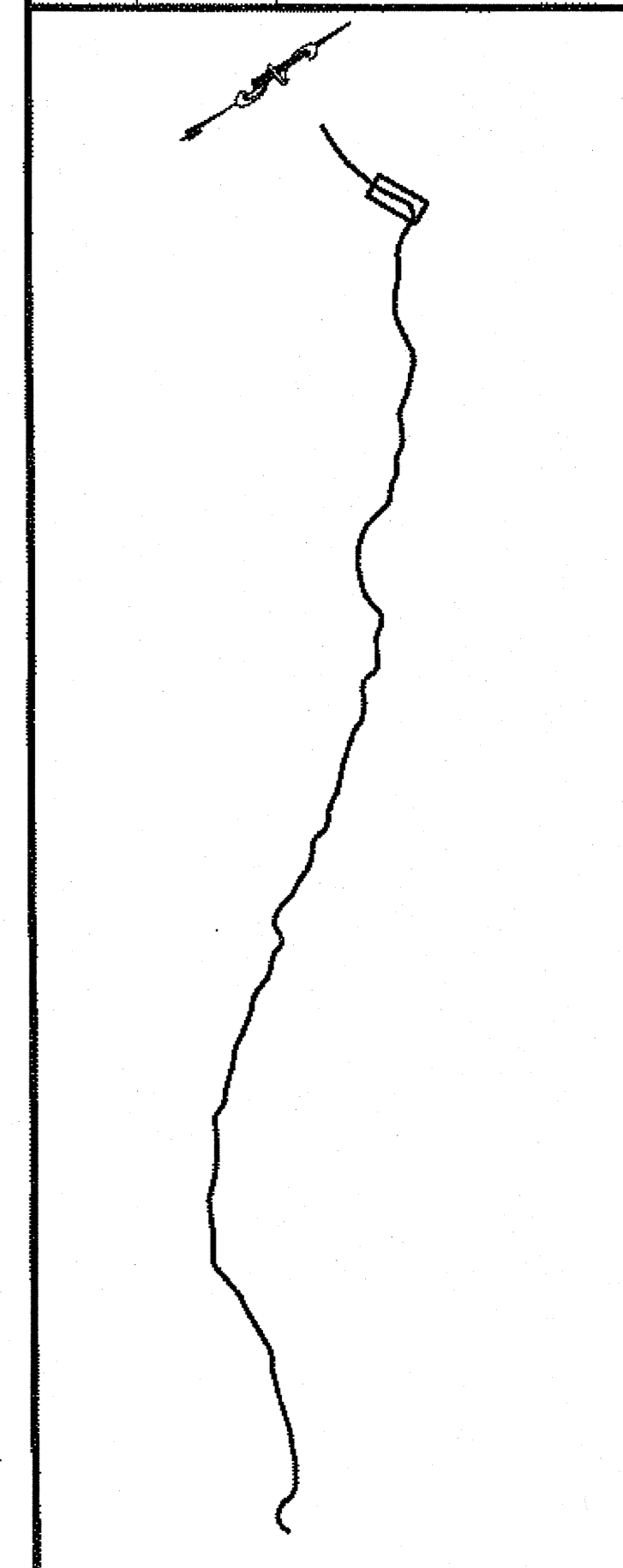


NOTES:  
 PROJECT CONTROL, TOPOGRAPHIC AND PLANEMETRIC SURVEY DATA WAS PROVIDED BY THE STATE OF ALASKA, SOUTHEAST REGION, RIGHT-OF-WAY SECTION, FOR THE HAINES HIGHWAY 4 - 24 PROJECT. NO ADDITIONAL OR VERIFICATION SURVEY WAS CONDUCTED FOR THIS PROJECT. SEE HORIZONTAL CONTROL TRANSFORMATION PARAMETERS.

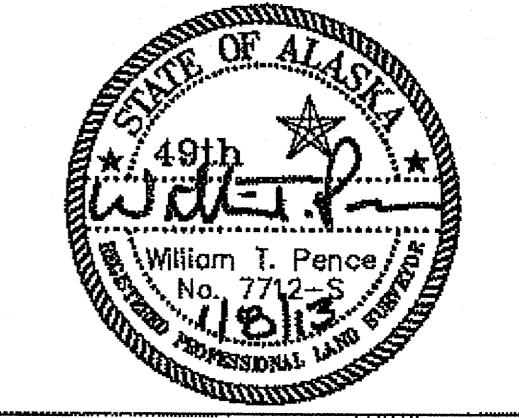
PROPERTY BOUNDARIES AND RIGHT-OF-WAY LIMITS WERE PROVIDED BY THE STATE OF ALASKA, SOUTHEAST REGION, RIGHT-OF-WAY SECTION AND HAVE NOT BEEN VERIFIED FOR THIS PROJECT.

BASIS OF LOCAL CONTROL AND STATIONING ARE THE DEPARTMENT OF HIGHWAYS CENTERLINE MONUMENTS AT STATION 20+00.00 AND STATION 39+98.06.

**DO NOT SCALE FROM THESE DRAWINGS USE DIMENSIONS**



CHECKED BY: K. KILPATRICK



DESIGNED BY: S. NOBLE

DRAWN BY: B. O'QUINN

STATE OF ALASKA  
 DEPARTMENT OF TRANSPORTATION  
 & PUBLIC FACILITIES  
 SOUTHEAST REGION

**HAINES - FAIRBANKS  
 PIPELINE BRIDGE  
 DEMOLITION  
 PROJECT #69924**

**SURVEY CONTROL**

PROJECT DESIGNATION	
<b>69924</b>	
STATE	YEAR
<b>ALASKA</b>	<b>2013</b>
SHEET NUMBER	TOTAL SHEETS
<b>A3</b>	<b>10</b>

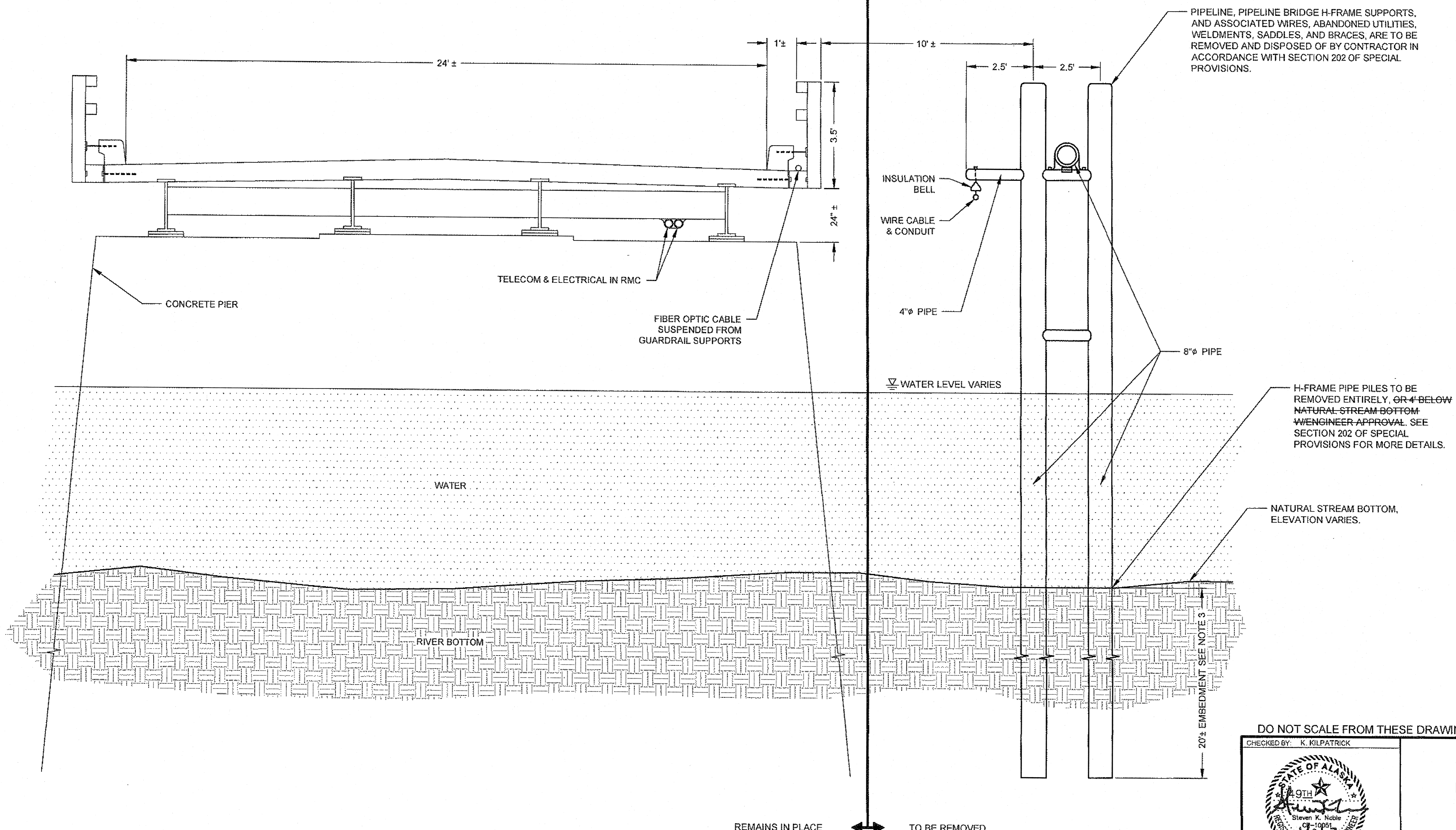
*Handwritten initials and date: JS 4/19/13*

NOTES:

1. SEE PIPELINE BRIDGE AS-BUILT IN APPENDIX B OF THE SPECIAL PROVISIONS FOR MORE DETAILS.
2. SEE CHILKAT RIVER BRIDGE AS-BUILT IN APPENDIX C OF THE SPECIAL PROVISIONS FOR MORE DETAILS.
3. EMBEDMENT DEPTH IS APPROXIMATE. SEE APPENDIX B, PIPELINE AS-BUILT, AND THE INSPECTION REPORT FOR CHILKAT RIVER BRIDGE (NO. 742) IN APPENDIX D FOR INFORMATION.

CHILKAT RIVER BRIDGE (NO. 742)  
REMAINS IN PLACE

HAINES FAIRBANKS  
PIPELINE BRIDGE  
TO BE REMOVED



PIPELINE, PIPELINE BRIDGE H-FRAME SUPPORTS, AND ASSOCIATED WIRES, ABANDONED UTILITIES, WELDMENTS, SADDLES, AND BRACES, ARE TO BE REMOVED AND DISPOSED OF BY CONTRACTOR IN ACCORDANCE WITH SECTION 202 OF SPECIAL PROVISIONS.

H-FRAME PIPE PILES TO BE REMOVED ENTIRELY, OR 4' BELOW NATURAL STREAM BOTTOM WITH ENGINEER APPROVAL. SEE SECTION 202 OF SPECIAL PROVISIONS FOR MORE DETAILS.

NATURAL STREAM BOTTOM, ELEVATION VARIES.

20'± EMBEDMENT SEE NOTE 3

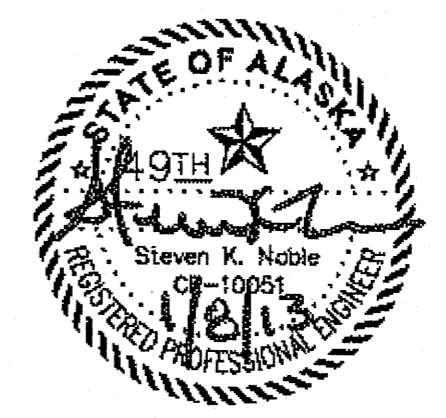
REMAINS IN PLACE

TO BE REMOVED

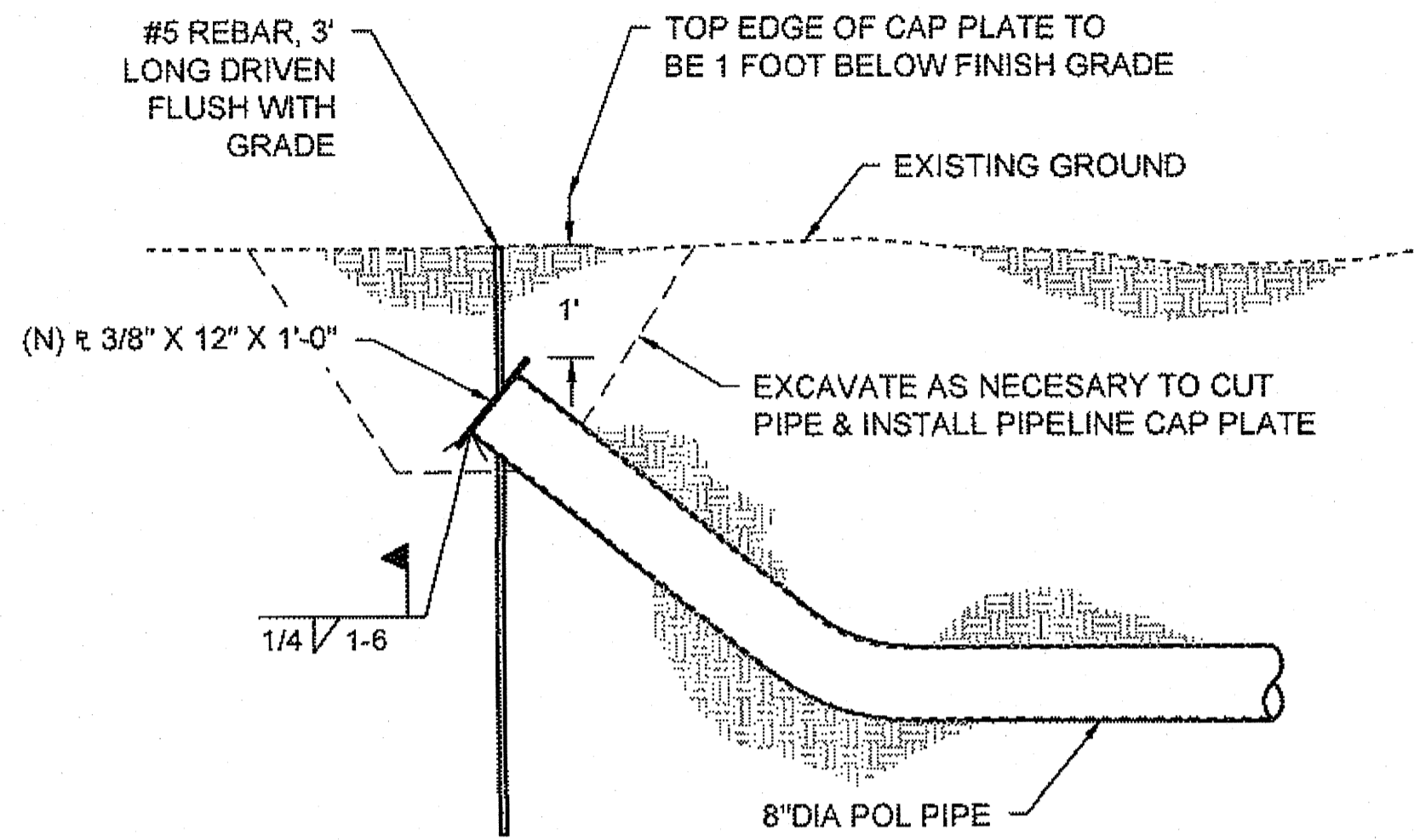
HAINES HIGHWAY CHILKAT RIVER BRIDGE AND HAINES-FAIRBANKS PIPELINE BRIDGE CROSS SECTION

NTS

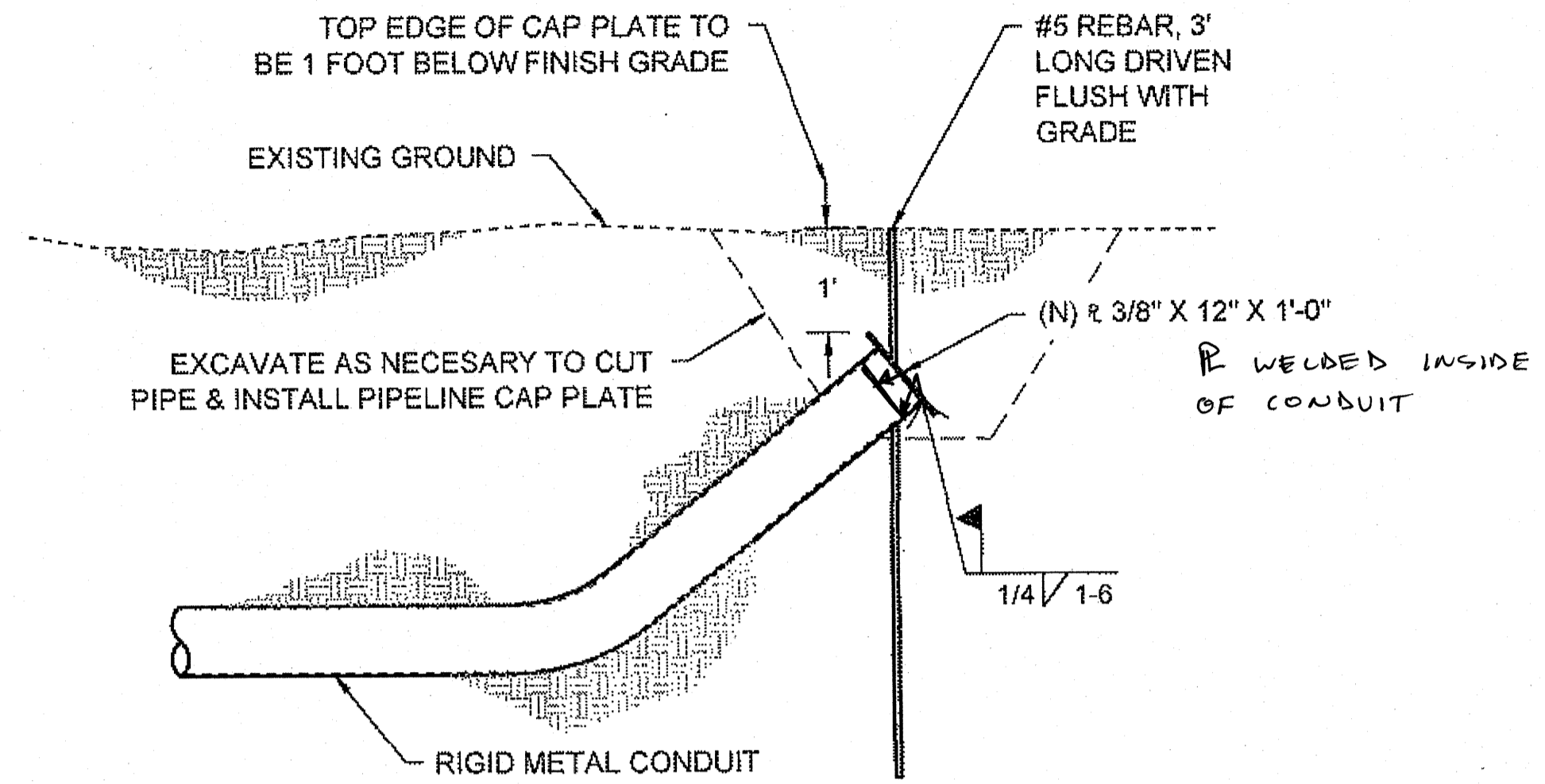
DO NOT SCALE FROM THESE DRAWINGS USE DIMENSIONS

CHECKED BY: K. KILPATRICK 		STATE OF ALASKA DEPARTMENT OF TRANSPORTATION & PUBLIC FACILITIES SOUTHEAST REGION	
DESIGNED BY: S. NOBLE DRAWN BY: B. O'QUINN		<b>HAINES - FAIRBANKS          PIPELINE BRIDGE          DEMOLITION          PROJECT #69924          TYPICAL CROSS          SECTION</b>	
PATH: P:\PROJECTS\119\DESIGN\BRIDGE DEMOLITION\DDM-H-H-PIPELINE.DWG TAB: B1 Monday, January 07, 2013 11:45:35 AM BURNETT, R. JEFF			
REVISIONS NO. DATE DESCRIPTION		PROJECT DESIGNATION 69924	YEAR 2013
		SHEET NO. B1	TOTAL SHEETS 10

4/19/13



1  
E1  
PIPELINE CAP DETAIL  
NTS

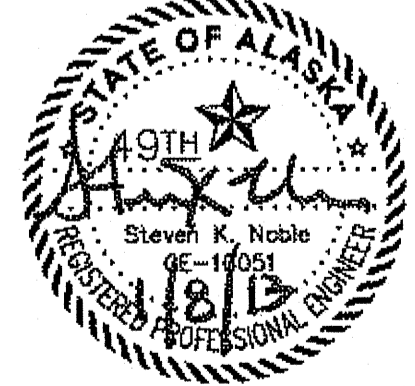


1  
E1  
RMC CONDUIT CAP DETAIL  
NTS

NOTES:

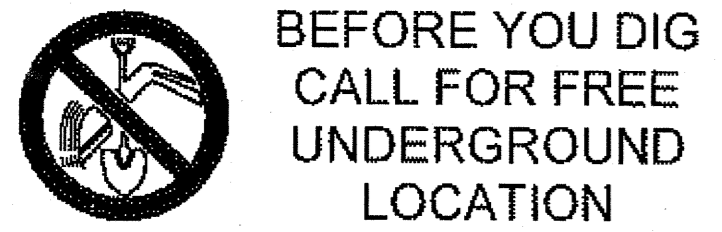
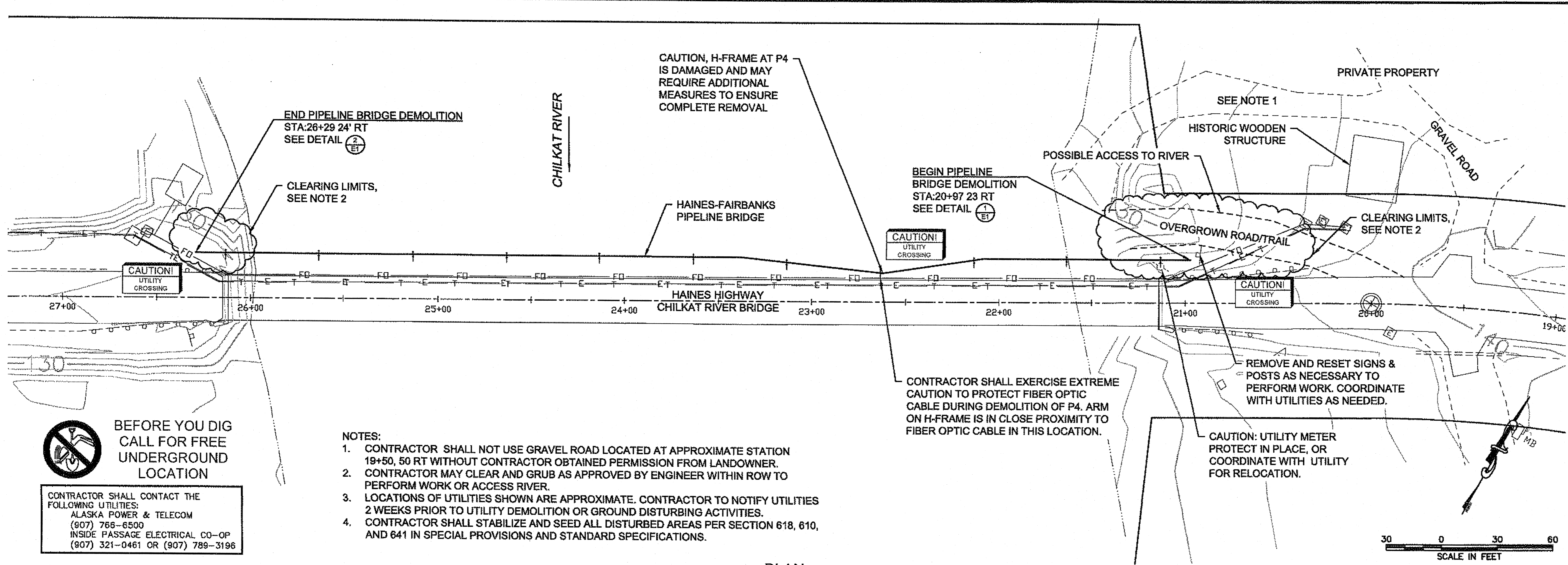
1. SEE SECTION 504 IN SPECIAL PROVISIONS FOR WELDING REQUIREMENTS.
2. CONTRACTOR SHALL STABILIZE AND SEED ALL DISTURBED AREAS PER SECTION 618, 610, AND 641 IN SPECIAL PROVISIONS AND STANDARD SPECIFICATIONS.

DO NOT SCALE FROM THESE DRAWINGS USE DIMENSIONS

CHECKED BY: K. KILPATRICK 		STATE OF ALASKA DEPARTMENT OF TRANSPORTATION & PUBLIC FACILITIES SOUTHEAST REGION  <b>HAINES - FAIRBANKS          PIPELINE BRIDGE          DEMOLITION          PROJECT #69924</b>  <b>DETAILS</b>												
DESIGNED BY: S. NOBLE DRAWN BY: B. O'QUINN		PATH: P:\PROJECTS\ID59119\DESIGN\BRIDGE DEMOLITION\DDM-HH-PIPELINE.DWG TAB: E1 Monday, January 07, 2013 11:46:27 AM BURNETT, R. JEFF												
<table border="1"> <thead> <tr> <th colspan="3">REVISIONS</th> </tr> <tr> <th>NO.</th> <th>DATE</th> <th>DESCRIPTION</th> </tr> </thead> <tbody> <tr> <td> </td> <td> </td> <td> </td> </tr> </tbody> </table>		REVISIONS			NO.	DATE	DESCRIPTION				PROJECT DESIGNATION <b>69924</b>	YEAR <b>2013</b>	SHEET NO. <b>E1</b>	TOTAL SHEETS <b>10</b>
REVISIONS														
NO.	DATE	DESCRIPTION												

BS  
4/11/13

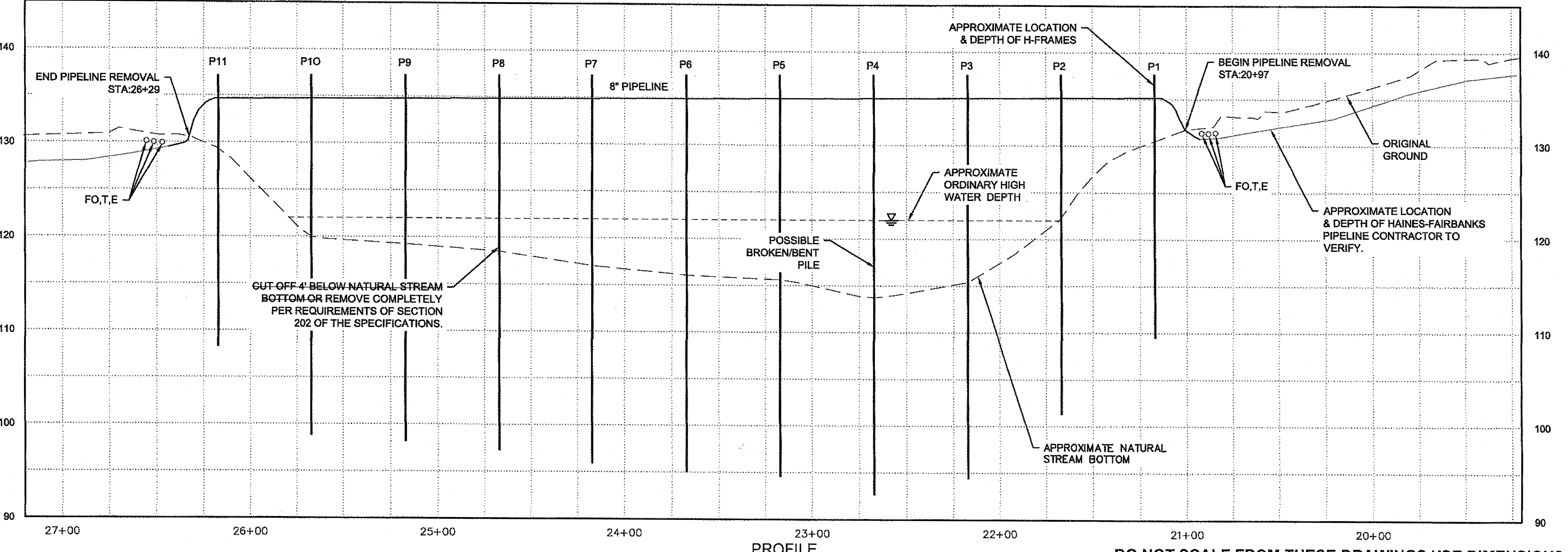
ADDENDUM NUMBER		
ATTACHMENT NUMBER		
RECORD OF REVISIONS		
No.	DATE	DESCRIPTION



CONTRACTOR SHALL CONTACT THE FOLLOWING UTILITIES:  
ALASKA POWER & TELECOM  
(907) 766-6500  
INSIDE PASSAGE ELECTRICAL CO-OP  
(907) 321-0461 OR (907) 789-3196

- NOTES:
1. CONTRACTOR SHALL NOT USE GRAVEL ROAD LOCATED AT APPROXIMATE STATION 19+50, 50 RT WITHOUT CONTRACTOR OBTAINED PERMISSION FROM LANDOWNER. CONTRACTOR MAY CLEAR AND GRUB AS APPROVED BY ENGINEER WITHIN ROW TO PERFORM WORK OR ACCESS RIVER.
  2. LOCATIONS OF UTILITIES SHOWN ARE APPROXIMATE. CONTRACTOR TO NOTIFY UTILITIES 2 WEEKS PRIOR TO UTILITY DEMOLITION OR GROUND DISTURBING ACTIVITIES.
  3. CONTRACTOR SHALL STABILIZE AND SEED ALL DISTURBED AREAS PER SECTION 618, 610, AND 641 IN SPECIAL PROVISIONS AND STANDARD SPECIFICATIONS.

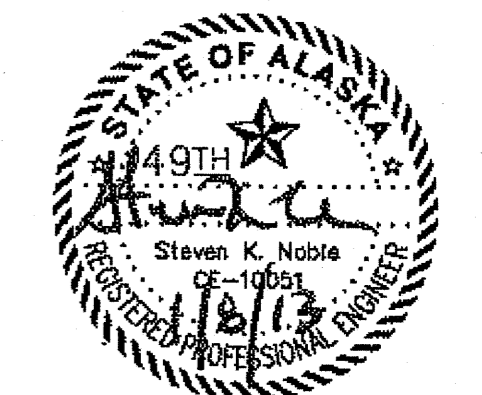
PLAN



PROFILE

DO NOT SCALE FROM THESE DRAWINGS USE DIMENSIONS

CHECKED BY: K. KILPATRICK



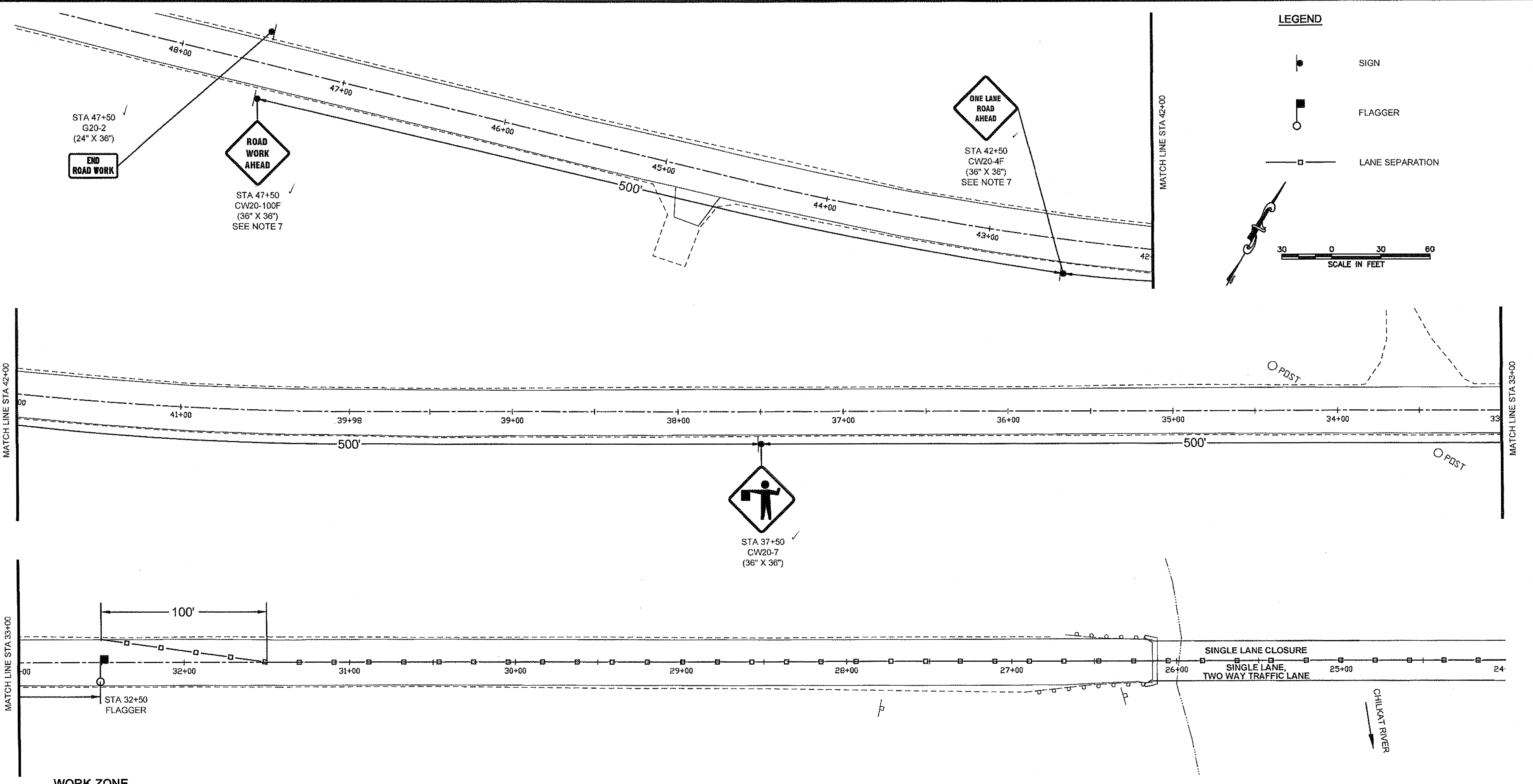
DESIGNED BY: S. NOBLE  
DRAWN BY: B. O'QUINN

STATE OF ALASKA  
DEPARTMENT OF TRANSPORTATION & PUBLIC FACILITIES  
SOUTHEAST REGION  
HAINES - FAIRBANKS  
PIPELINE BRIDGE  
DEMOLITION  
PROJECT #69924

SITE PLAN & PROFILE

PROJECT DESIGNATION	
69924	
STATE	YEAR
ALASKA	2013
SHEET NUMBER	TOTAL SHEETS
F1	10

JB  
4/1/13



**WORK ZONE**

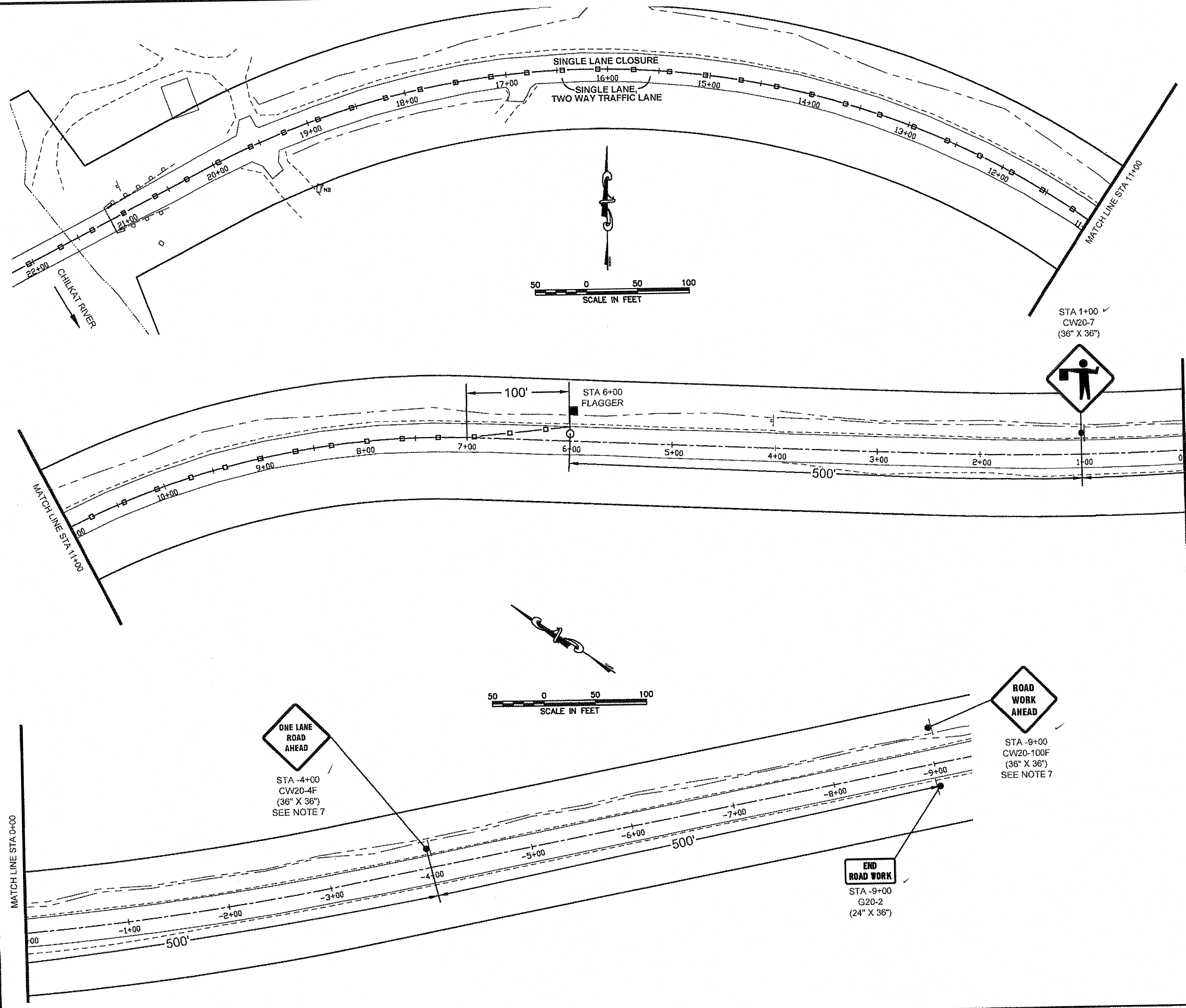
**GENERAL NOTES**

1. THE TRAFFIC CONTROL REQUIREMENTS SHOWN ON THESE PLANS ARE MINIMUM AND DO NOT ATTEMPT TO ADDRESS IN DEPTH THE VARIETY OF SITUATIONS THAT MAY OCCUR ONCE CONSTRUCTION HAS STARTED. THE FINAL TRAFFIC CONTROL PLAN SHALL BE COMPLETED BY THE CONTRACTOR AND APPROVED BY THE DOT&PF.
2. ALL TEMPORARY TRAFFIC CONTROL (T.T.C.) DEVICE PLACEMENT, FABRICATION, AND MAINTENANCE OF TRAFFIC SHALL CONFORM TO THE LATEST EDITION OF THE MANUAL OF UNIFORM TRAFFIC CONTROL DEVICES FOR STREETS AND HIGHWAYS (M.U.T.C.D.) AND THE ALASKA TRAFFIC MANUAL. ALL T.T.C. MATERIALS ARE SUBSIDIARY TO THEIR RESPECTIVE TRAFFIC CONTROL PAY ITEM.
3. TYPE "A" FLASHING WARNING LIGHTS SHALL BE USED TO MARK THE TYPE III BARRICADES, TYPE II BARRICADES, DRUMS, AND ROAD CLOSURE ADVANCED SIGNING AT NIGHT. WHEN BARRICADES OR DRUMS ARE USED FOR CHANNELIZING TRAFFIC, TYPE "C" STEADY BURN WARNING LIGHTS SHALL BE USED.
4. USE TYPE II BARRICADES FOR APPROACH TAPERS TO ALL LANE CLOSURES WITH TYPE C STEADY BURN LIGHTS.
5. CONSTRUCTION ZONE SPEED LIMIT SHALL BE APPROVED BY DOT&PF.
6. CONTRACTOR SHALL COORDINATE CONSTRUCTION PHASING WITH DOT&PF PERSONNEL AND IN ACCORDANCE WITH THE DOT&PF APPROVED TRAFFIC CONTROL PLAN.
7. "ROAD WORK AHEAD" SIGN CW20-100F AND "ONE LANE ROAD AHEAD" SIGN CW20-4F ARE TO BE PERMANENT CONSTRUCTION SIGNS.

DO NOT SCALE FROM THESE DRAWINGS USE DIMENSIONS

CHECKED BY: K. KILPATRICK 		STATE OF ALASKA DEPARTMENT OF TRANSPORTATION & PUBLIC FACILITIES SOUTHEAST REGION												
<b>HAINES - FAIRBANKS          PIPELINE BRIDGE          DEMOLITION          PROJECT #69924          TRAFFIC CONTROL          PLAN</b>														
DESIGNED BY: S. NOBLE DRAWN BY: B. O'QUINN		PATH: P:\PROJECTS\059119\DESIGN\BRIDGE DEMOLITION\DDM-HH-PIPELINE.DWG TAB: J1 Monday, January 07, 2013 11:47:36 AM BURNETT, R. JEFF												
<table border="1"> <thead> <tr> <th colspan="3">REVISIONS</th> </tr> <tr> <th>NO.</th> <th>DATE</th> <th>DESCRIPTION</th> </tr> </thead> <tbody> <tr> <td> </td> <td> </td> <td> </td> </tr> </tbody> </table>		REVISIONS			NO.	DATE	DESCRIPTION				PROJECT DESIGNATION <b>69924</b>	YEAR <b>2013</b>	SHEET NO. <b>J1</b>	TOTAL SHEETS <b>10</b>
REVISIONS														
NO.	DATE	DESCRIPTION												

4/9/13



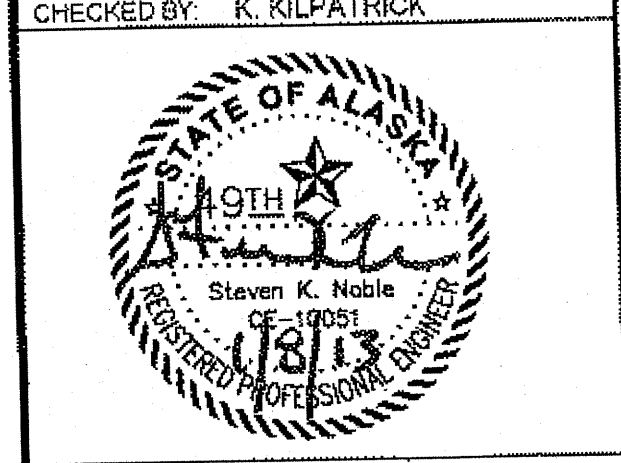
**LEGEND**

- SIGN
- FLAGGER
- LANE SEPARATION

**GENERAL NOTES**

1. THE TRAFFIC CONTROL REQUIREMENTS SHOWN ON THESE PLANS ARE MINIMUM AND DO NOT ATTEMPT TO ADDRESS IN DEPTH THE VARIETY OF SITUATIONS THAT MAY OCCUR ONCE CONSTRUCTION HAS STARTED. THE FINAL TRAFFIC CONTROL PLAN SHALL BE COMPLETED BY THE CONTRACTOR AND APPROVED BY THE DOT&PF.
2. ALL TEMPORARY TRAFFIC CONTROL (T.T.C.) DEVICE PLACEMENT, FABRICATION, AND MAINTENANCE OF TRAFFIC SHALL CONFORM TO THE LATEST EDITION OF THE MANUAL OF UNIFORM TRAFFIC CONTROL DEVICES FOR STREETS AND HIGHWAYS (M.U.T.C.D.) AND THE ALASKA TRAFFIC MANUAL. ALL T.T.C. MATERIALS ARE SUBSIDIARY TO THEIR RESPECTIVE TRAFFIC CONTROL PAY ITEM.
3. TYPE "A" FLASHING WARNING LIGHTS SHALL BE USED TO MARK THE TYPE III BARRICADES, TYPE II BARRICADES, DRUMS, AND ROAD CLOSURE ADVANCED SIGNING AT NIGHT. WHEN BARRICADES OR DRUMS ARE USED FOR CHANNELIZING TRAFFIC, TYPE "C" STEADY BURN WARNING LIGHTS SHALL BE USED.
4. USE TYPE II BARRICADES FOR APPROACH TAPERS TO ALL LANE CLOSURES WITH TYPE C STEADY BURN LIGHTS.
5. CONSTRUCTION ZONE SPEED LIMIT SHALL BE APPROVED BY DOT&PF.
6. CONTRACTOR SHALL COORDINATE CONSTRUCTION PHASING WITH DOT&PF PERSONNEL AND IN ACCORDANCE WITH THE DOT&PF APPROVED TRAFFIC CONTROL PLAN.
7. "ROAD WORK AHEAD" SIGN CW20-100F AND "ONE LANE ROAD AHEAD" SIGN CW20-4F ARE TO BE PERMANENT CONSTRUCTION SIGNS.

DO NOT SCALE FROM THESE DRAWINGS USE DIMENSIONS



STATE OF ALASKA  
DEPARTMENT OF TRANSPORTATION  
& PUBLIC FACILITIES  
SOUTHEAST REGION

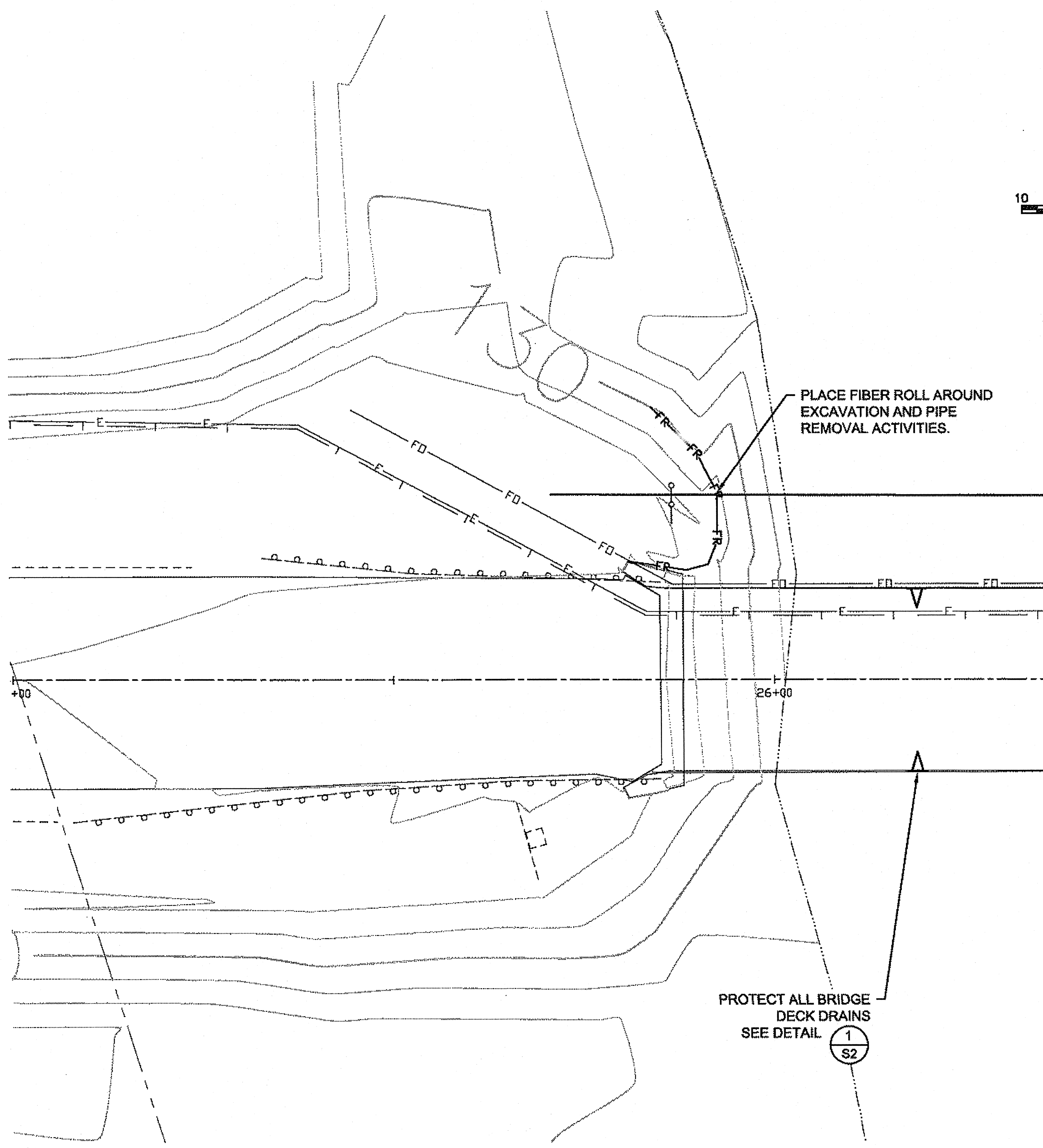
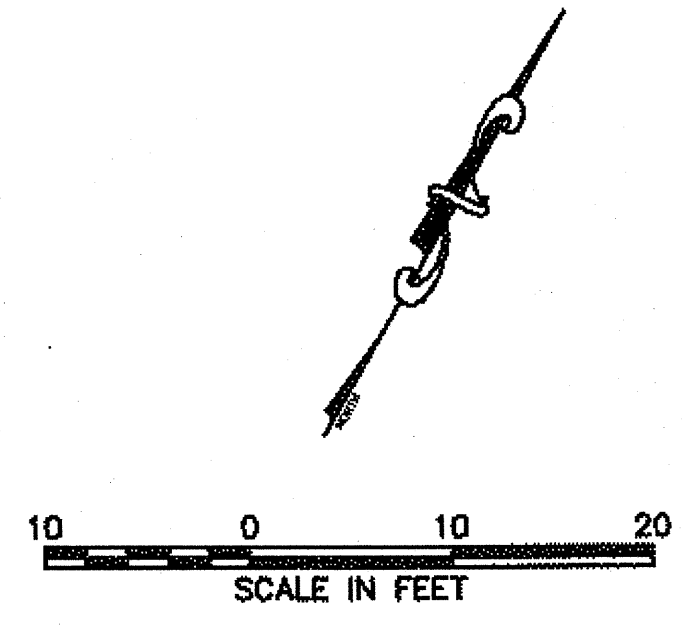
**HAINES - FAIRBANKS  
PIPELINE BRIDGE  
DEMOLITION  
PROJECT #69924  
TRAFFIC CONTROL  
PLAN**

DESIGNED BY: S. NOBLE  
DRAWN BY: B. O'QUINN  
PATH: P:\PROJECTS\059119\DESIGN\BRIDGE DEMOLITION\DDM-HH-PIPELINE DWG  
TAB: J2 Monday, January 07, 2013 11:48:45 AM BURNETT, R. JEFF

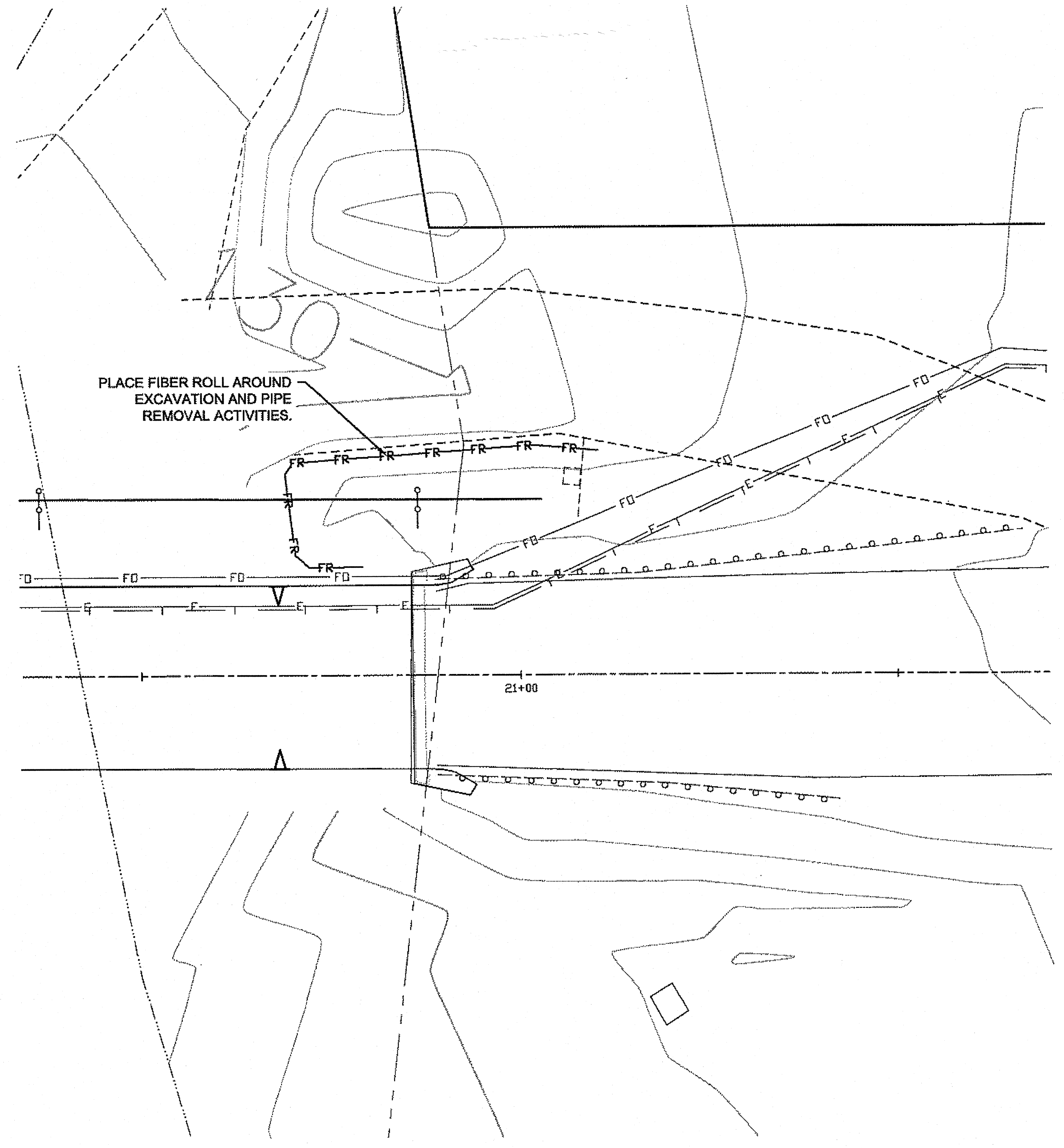
REVISIONS			PROJECT DESIGNATION	YEAR	SHEET NO.	TOTAL SHEETS
NO.	DATE	DESCRIPTION				
			69924	2013	J2	10

4/9/13

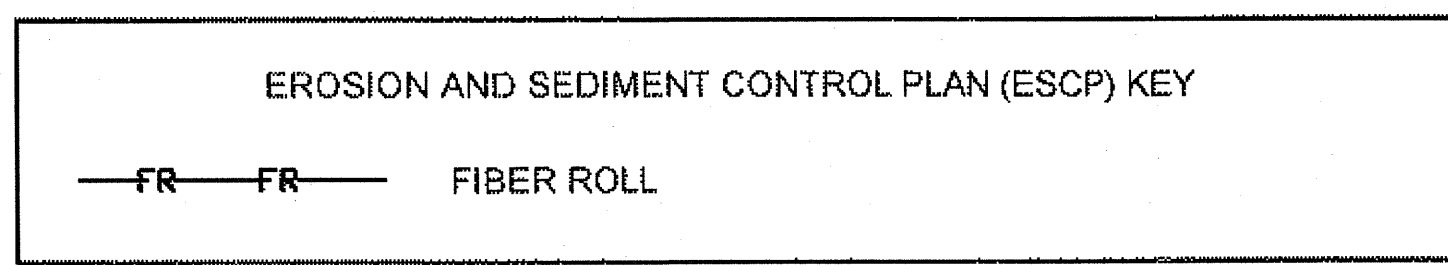




**WEST SIDE OF BRIDGE**



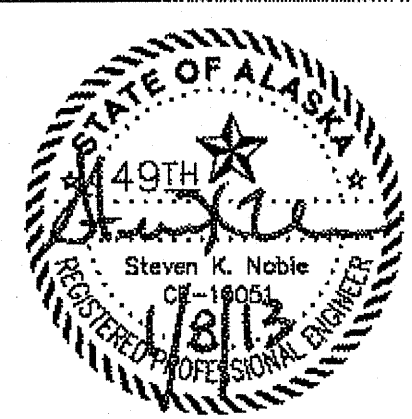
**EAST SIDE OF BRIDGE**



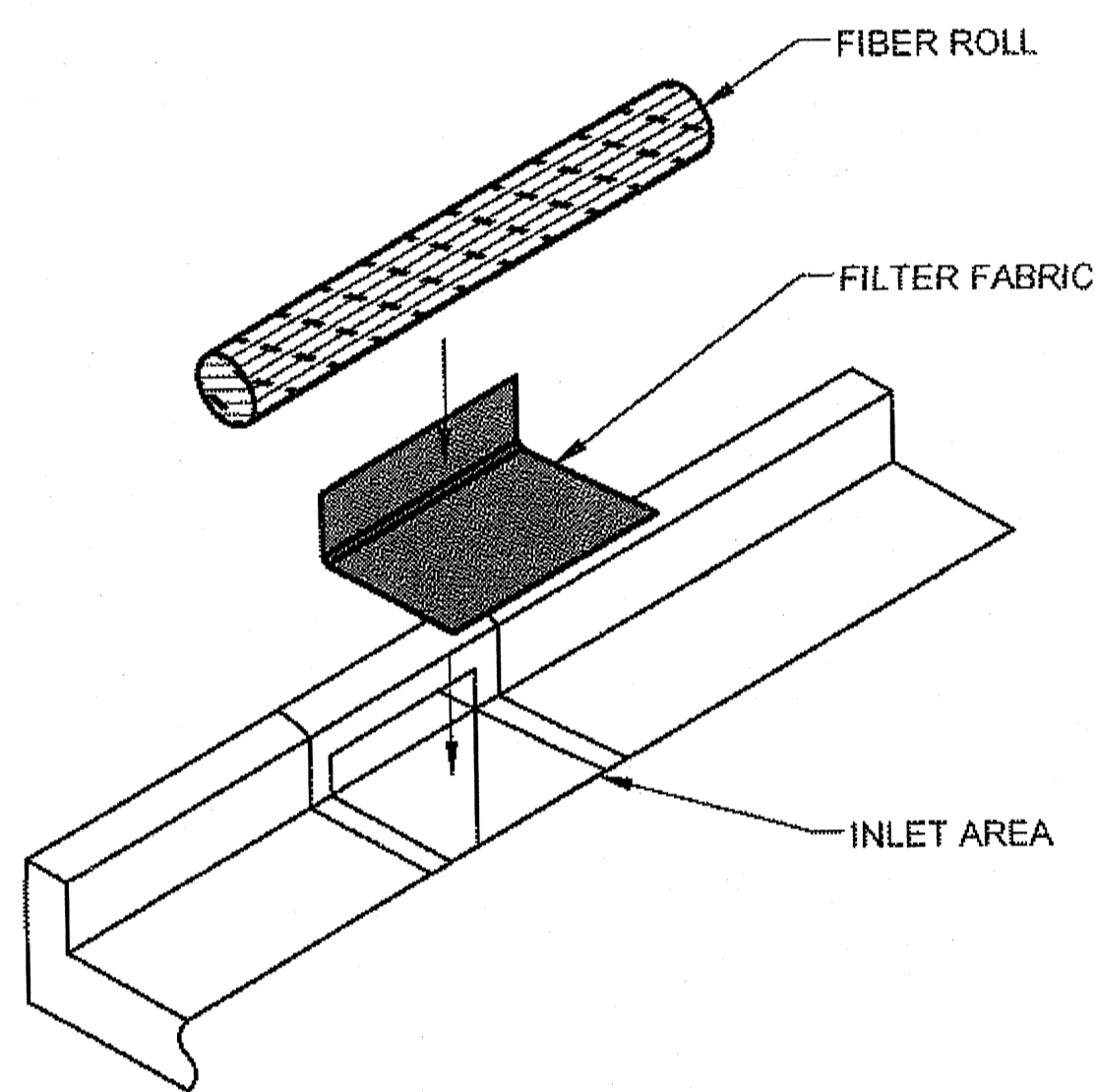
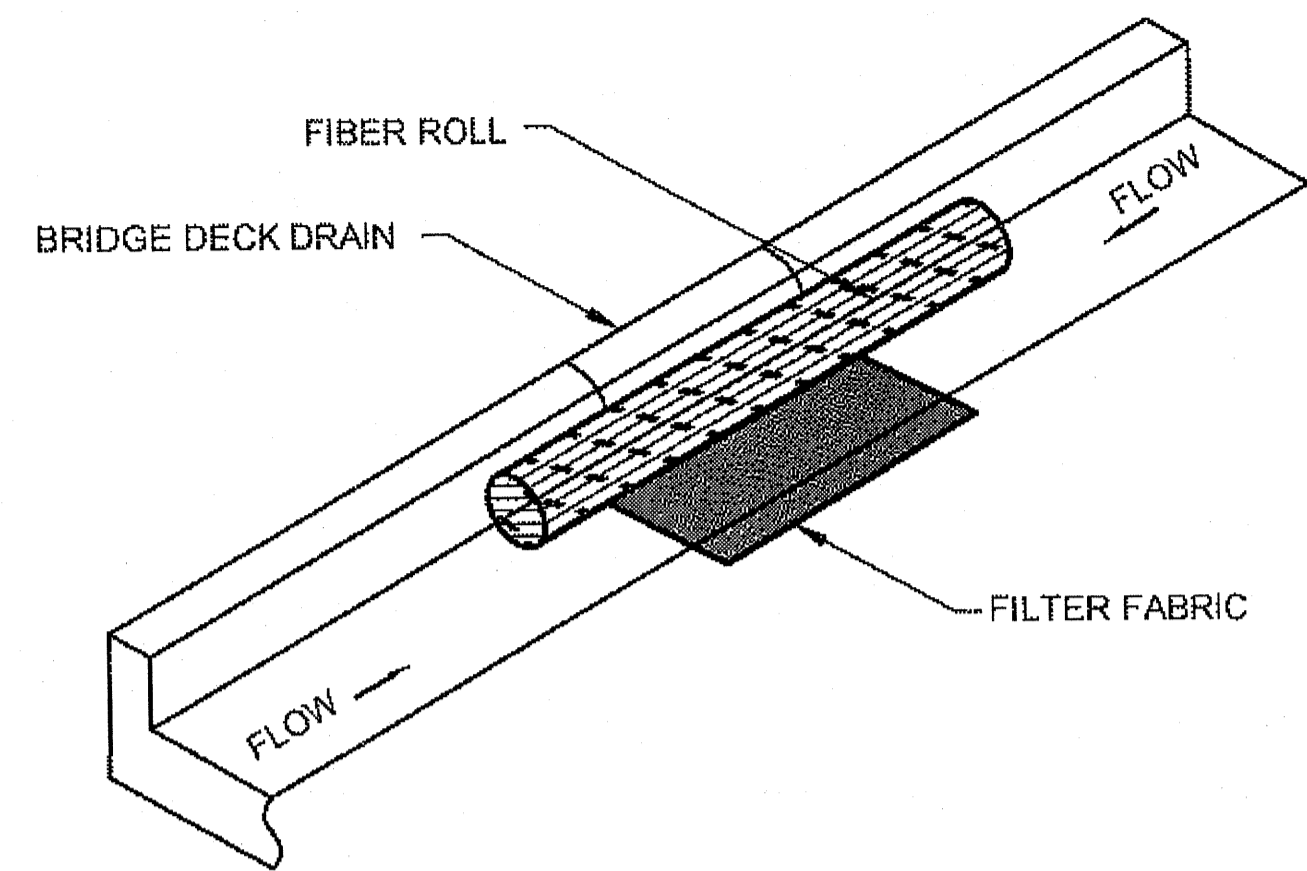
**EROSION AND SEDIMENT CONTROL PLAN NOTES:**

- NOTES:
- USE APPROPRIATE CONTROL MEASURES, AS NECESSARY, TO MINIMIZE EROSION OR SEDIMENT RUNOFF DURING SPRING THAW. DURING WINTER CONSTRUCTION, SEDIMENT BARRIERS MAY NOT BE NECESSARY IF ALL GROUND DISTURBANCES ARE PERMANENTLY STABILIZED PRIOR TO SPRING THAW. IF ACCESS TO THE RIVER DISTURBS THE BANKS, THEY SHALL BE STABILIZED WITH ARMOR ROCK BEFORE EROSION OCCURS, AND PRIOR TO DEMOBILIZING.

DO NOT SCALE FROM THESE DRAWINGS USE DIMENSIONS

CHECKED BY: K. KILPATRICK 		STATE OF ALASKA DEPARTMENT OF TRANSPORTATION & PUBLIC FACILITIES SOUTHEAST REGION	
DESIGNED BY: S. NOBLE DRAWN BY: B. O'QUINN		<b>HAINES - FAIRBANKS          PIPELINE BRIDGE          DEMOLITION          PROJECT #69924          EROSION &amp; SEDIMENT          CONTROL PLAN</b>	
PATH: P:\PROJECTS\ID59118\DESIGN\BRIDGE DEMOLITION\DDM-HH-PIPELINE.DWG TAB: S1 Monday, January 07, 2013 11:49:37 AM BURNETT, R. JEFF		PROJECT DESIGNATION <b>69924</b>	YEAR <b>2013</b>
REVISIONS NO. DATE DESCRIPTION	SHEET NO. <b>S1</b>	TOTAL SHEETS <b>10</b>	

JB  
4/9/13



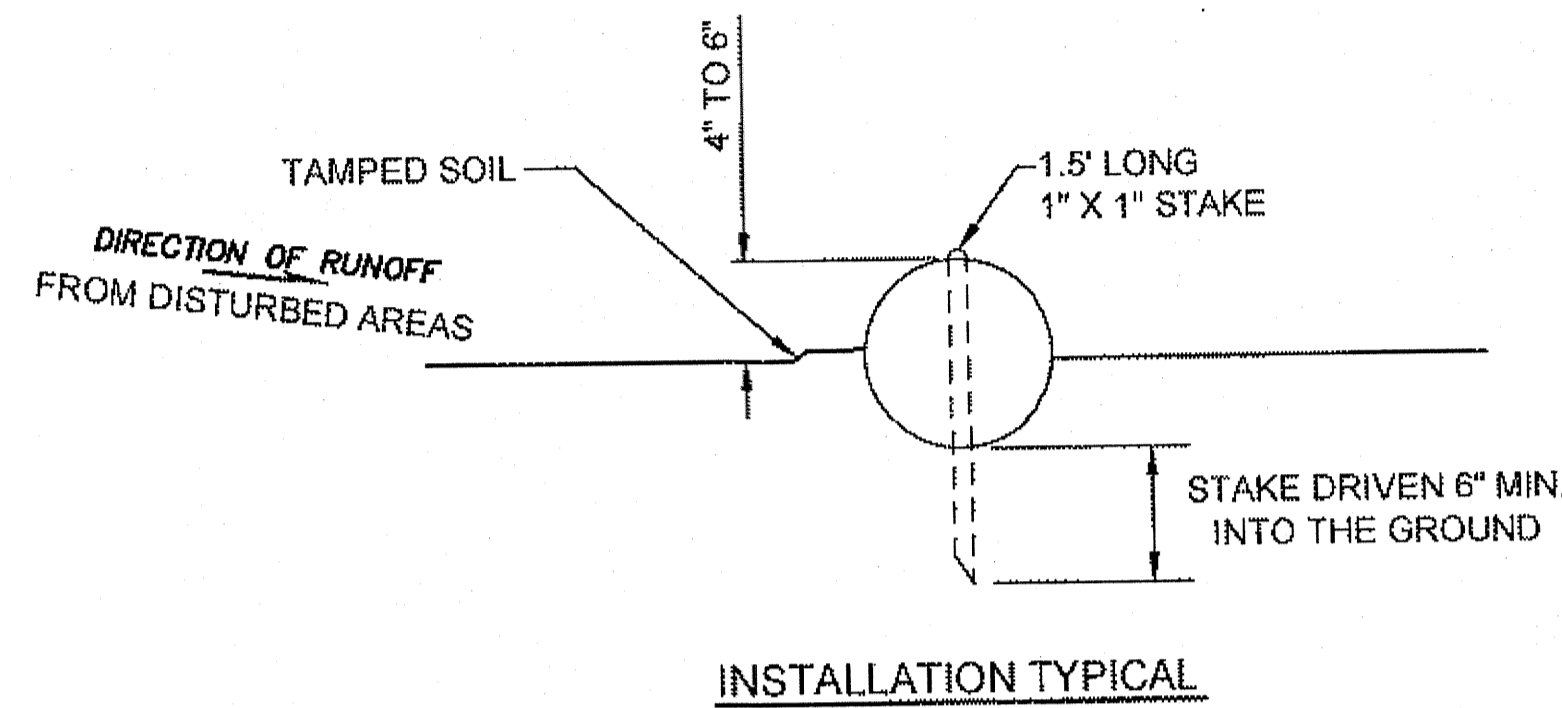
**INSTALLATION DETAIL**

**BRIDGE DECK DRAIN PROTECTION**

OR APPROVED EQUAL BMP

**NOTES**

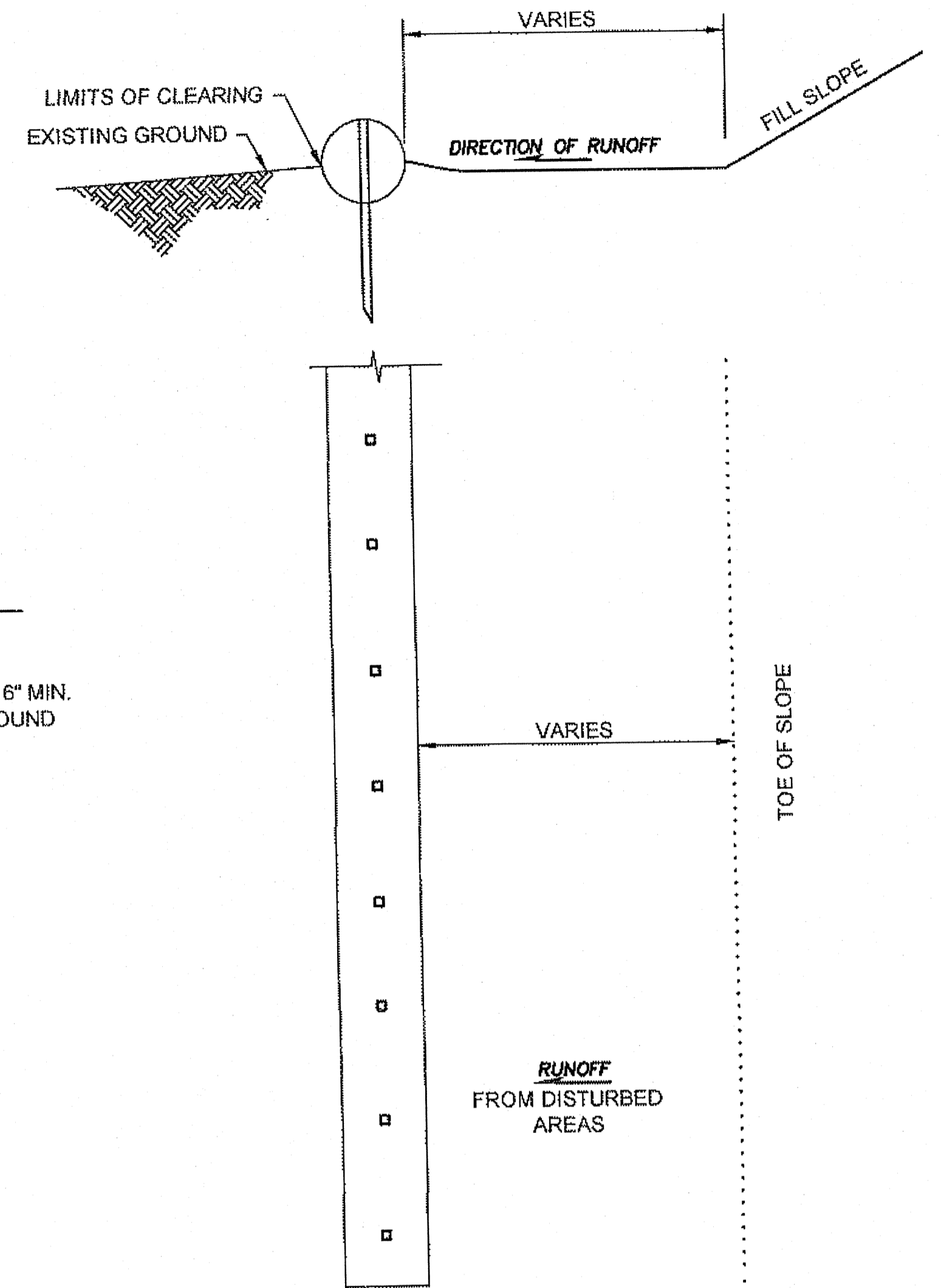
1. CLEAN DIRT AND DEBRIS FROM BRIDGE DECK DRAIN.
2. PLACE FILTER FABRIC.
3. PLACE FIBER ROLL.
4. NOT REQUIRED FOR WINTER CONSTRUCTION PRIOR TO SPRING THAW ✓



**INSTALLATION TYPICAL**

**NOTES**

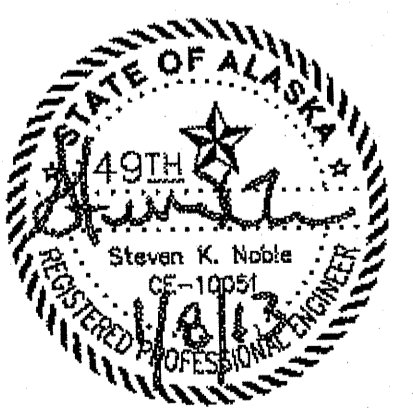
1. USE APPROPRIATE CONTROL MEASURES, AS NECESSARY, TO MINIMIZE EROSION OR SEDIMENT RUNOFF DURING SPRING THAW. DURING WINTER CONSTRUCTION, SEDIMENT BARRIERS MAY NOT BE NECESSARY IF ALL GROUND DISTURBANCES ARE PERMANENTLY STABILIZED PRIOR TO SPRING THAW. IF ACCESS TO THE RIVER DISTURBS THE BANKS, THEY SHALL BE STABILIZED WITH ARMOR ROCK BEFORE EROSION OCCURS, AND PRIOR TO DEMOBILIZING.
2. PERFORM MINOR HAND TRENCHING TO PROVIDE A STABLE FOUNDATION FOR THE FIBER ROLLS.
3. IF MORE THAN ONE FIBER ROLL IS PLACED IN A ROW, THE FIBER ROLLS SHALL BE OVERLAPPED A MINIMUM OF 12 INCHES, NOT ABUTTED.
4. SPACE STAKES AT 4 FT. MAXIMUM SPACING TO SECURE FIBER ROLLS.
5. INTERTWINE EACH STAKE WITH THE NETTING AND DRIVE STAKE APPROXIMATELY 6 IN. INTO THE GROUND WITH THE TOP OF STAKE BEING FLUSH WITH THE TOP OF THE FIBER ROLL.
6. TAMP SOIL ADJACENT TO UPSTREAM SIDE TO ASSURE WATER IS FORCED THROUGH THE FIBER ROLL RATHER THAN UNDER IT.
7. A HAZARDOUS MATERIAL CONTROL PLAN MUST BE APPROVED BY THE ENGINEER PRIOR TO CONSTRUCTION IN ACCORDANCE WITH SECTION 641 OF THE SPECIAL PROVISIONS.



**PLAN INSTALLATION OF A FIBER ROLL AT TOE OF FILL**

**FIBER ROLL**

DO NOT SCALE FROM THESE DRAWINGS USE DIMENSIONS

CHECKED BY: K. KILPATRICK 		STATE OF ALASKA DEPARTMENT OF TRANSPORTATION & PUBLIC FACILITIES SOUTHEAST REGION									
DESIGNED BY: S. NOBLE DRAWN BY: B. O'QUINN		<b>HAINES - FAIRBANKS          PIPELINE BRIDGE          DEMOLITION          PROJECT #69924          EROSION &amp; SEDIMENT          CONTROL DETAILS</b>									
PATH: P:\PROJECTS\ID59119\DESIGN\BRIDGE DEMOLITION\DDM-HH-PIPELINE.DWG TAB: S2 Monday, January 07, 2013 11:49:38 AM BURNETT, R. JEFF											
REVISIONS <table border="1"> <thead> <tr> <th>NO.</th> <th>DATE</th> <th>DESCRIPTION</th> </tr> </thead> <tbody> <tr> <td> </td> <td> </td> <td> </td> </tr> </tbody> </table>		NO.	DATE	DESCRIPTION				PROJECT DESIGNATION <b>69924</b>	YEAR <b>2013</b>	SHEET NO. <b>S2</b>	TOTAL SHEETS <b>10</b>
NO.	DATE	DESCRIPTION									

JS  
4/9/13