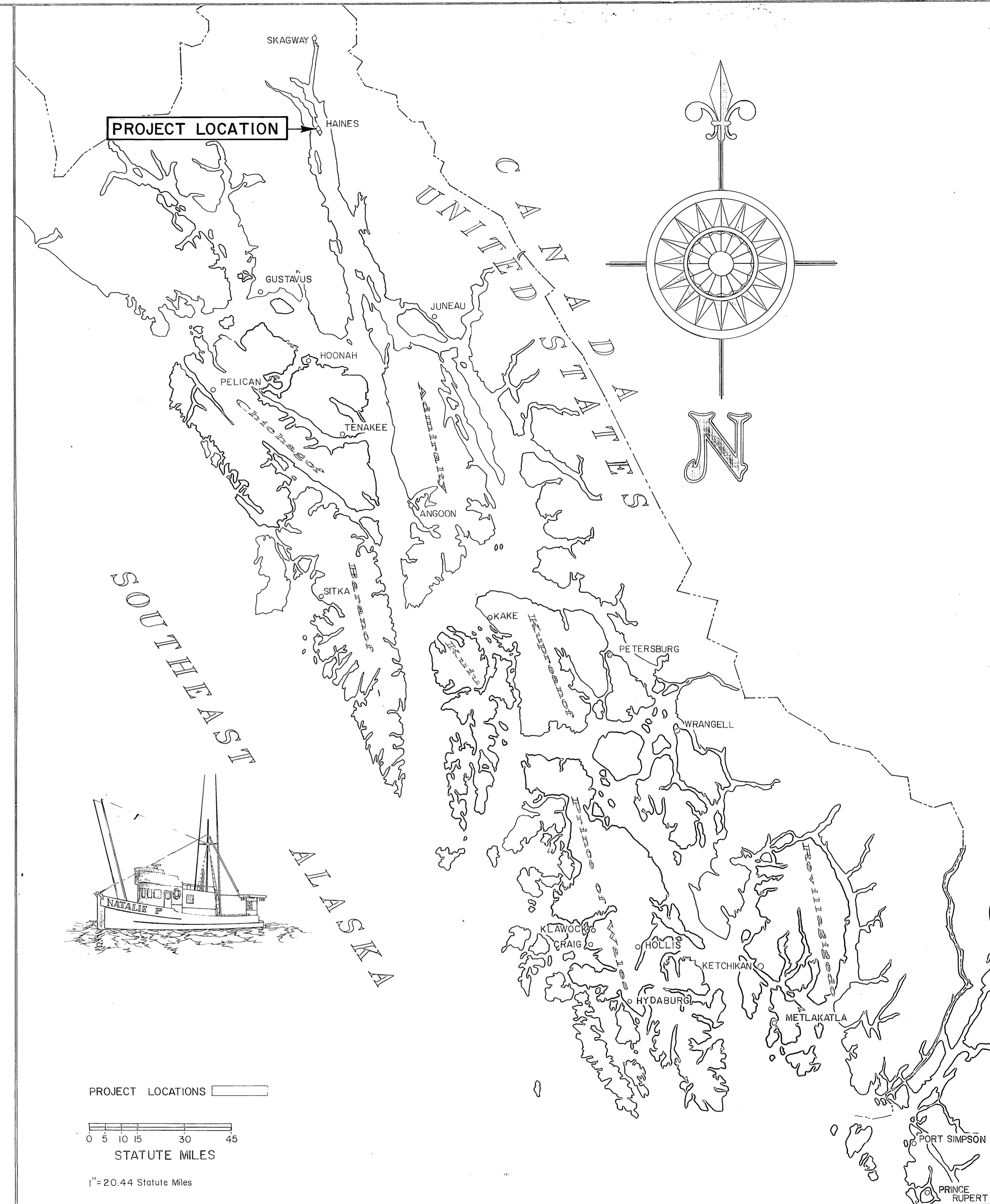
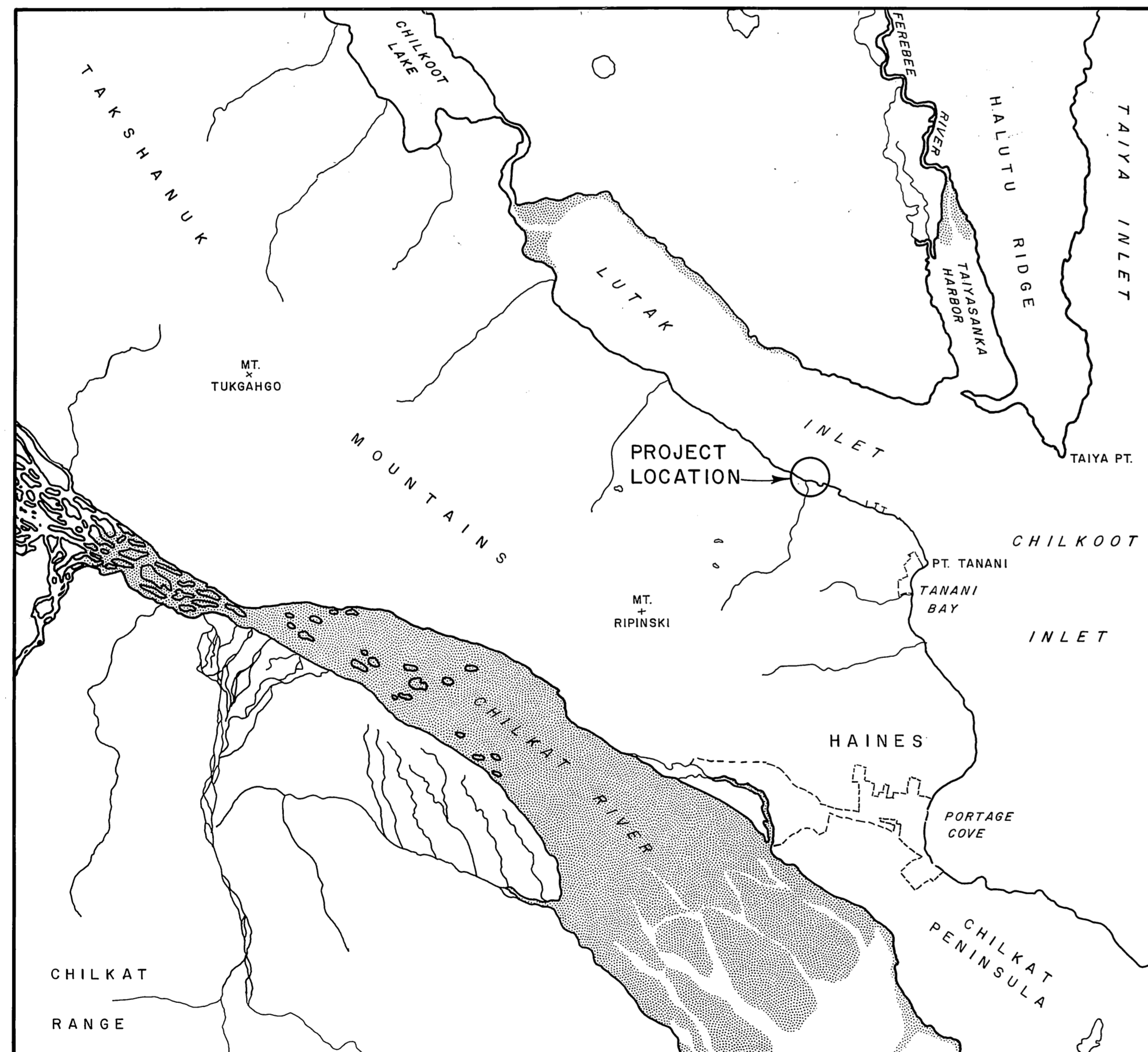


AS-BUILTS
 CONTRACTOR: NORTHERN TIMBER
 ORIGINAL AMOUNT: \$67,630.00
 PROJECT ENGINEER: LARRY GEISE
 MAY 1987 to JULY 1987

HAINES LUTAK INLET BOAT LAUNCH PROJECT NO. 69157



STATE
 OF
 ALASKA

DEPARTMENT OF TRANSPORTATION
 & PUBLIC FACILITIES
 S.E. REGION DESIGN & CONSTRUCTION

APPROVED

W.D. Dickmeier 10/29/86
 Director S.E. D&C. Date

Recommend
 for Approval

Wallace K. Williams 10/28/86
 Group Design Chief Date

SHEET 1 of 5

VA B 12/8/87

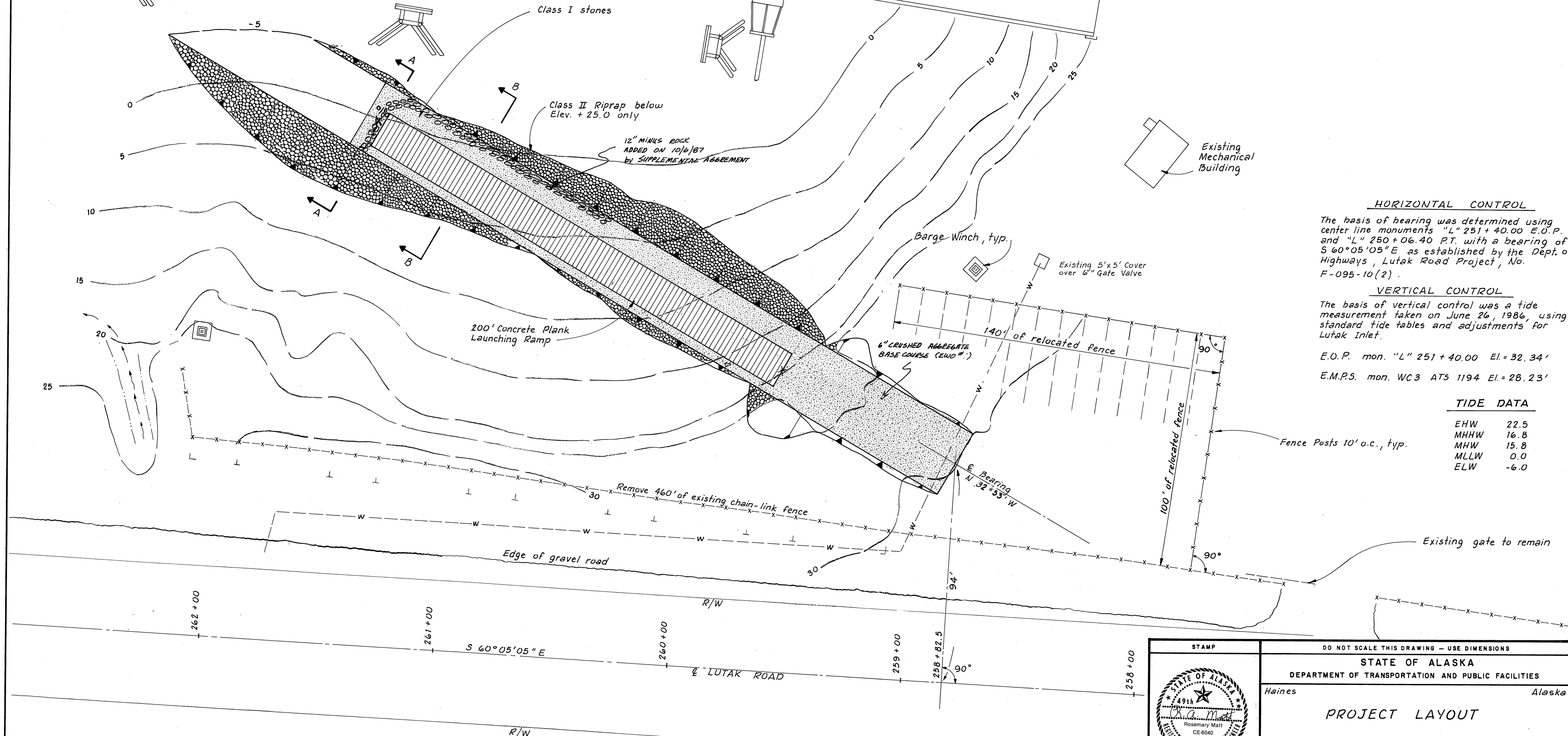
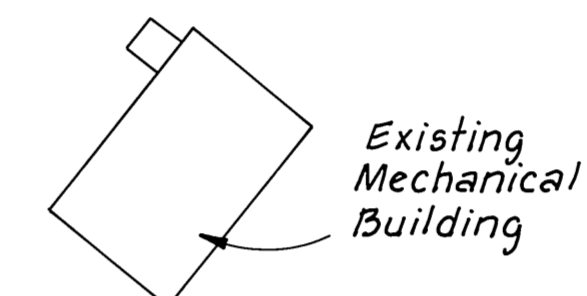
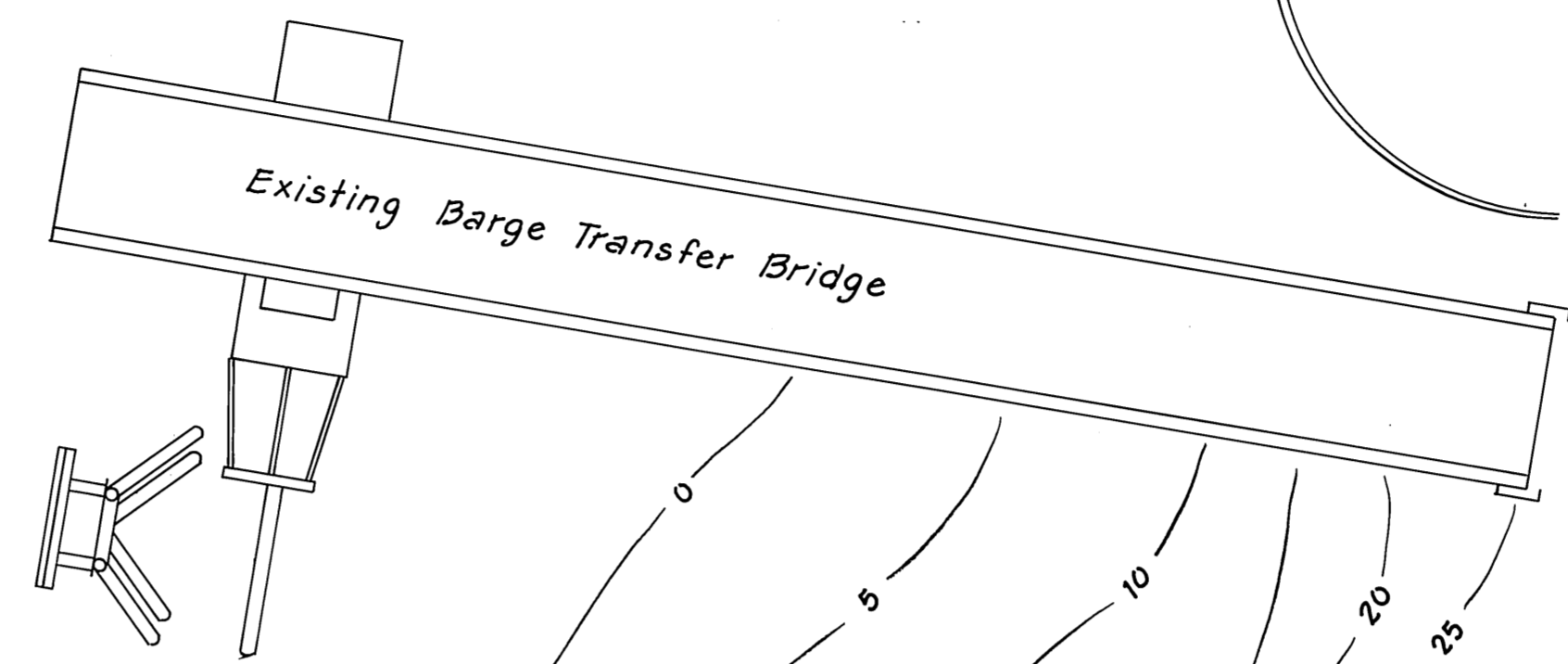
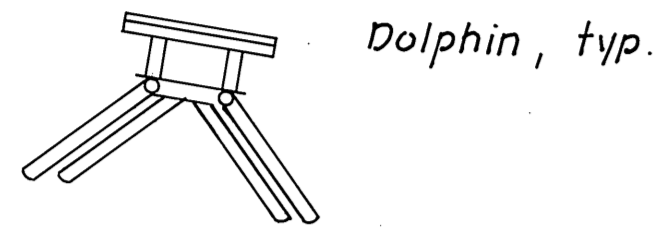
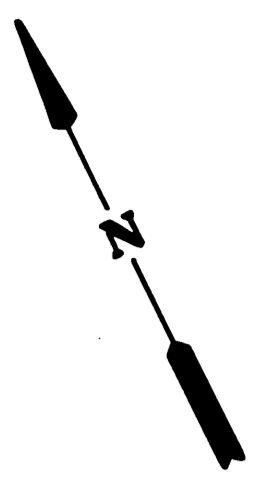
INDEX TO SHEETS

1	TITLE SHEET			
2	PROJECT LAYOUT			
3	TYPICAL SECTIONS			
4	CONCRETE PLANK DETAILS			
5	CHAIN LINK FENCE			

PROJECT &
 FILE NO.

NOTE: See sheet 3 for Section A-A
& Section B-B.

CITY OF HAINES
BARGE TRANSFER FACILITY



HORIZONTAL CONTROL

The basis of bearing was determined using center line monuments "L" 251+40.00 E.O.P. and "L" 250+06.40 P.T. with a bearing of S 60°05'05" E as established by the Dept. of Highways, Lutak Road Project, No. F-095-10(2).

VERTICAL CONTROL

The basis of vertical control was a tide measurement taken on June 26, 1986, using standard tide tables and adjustments for Lutak Inlet.

E.O.P. mon. "L" 251+40.00 El.=32.34'

E.M.P.S. mon. WC3 ATS 1194 El.=28.23'

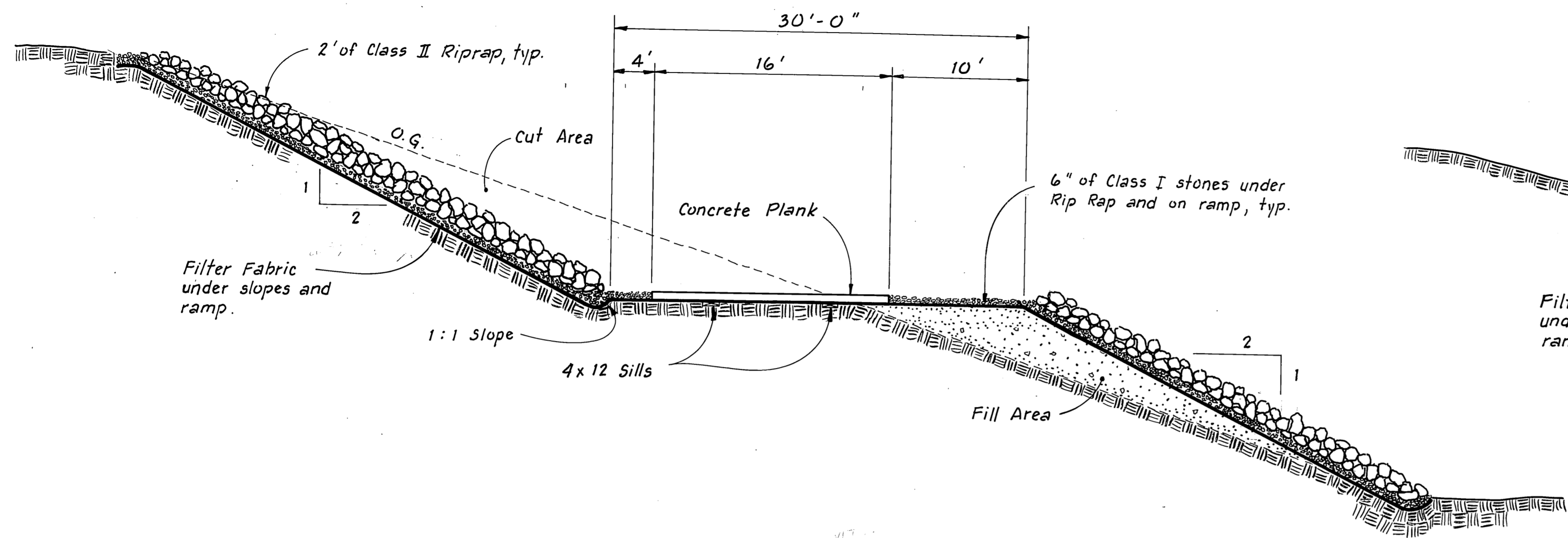
TIDE DATA

EHW	22.5
MHHW	16.8
MHW	15.8
MLLW	0.0
ELW	-6.0

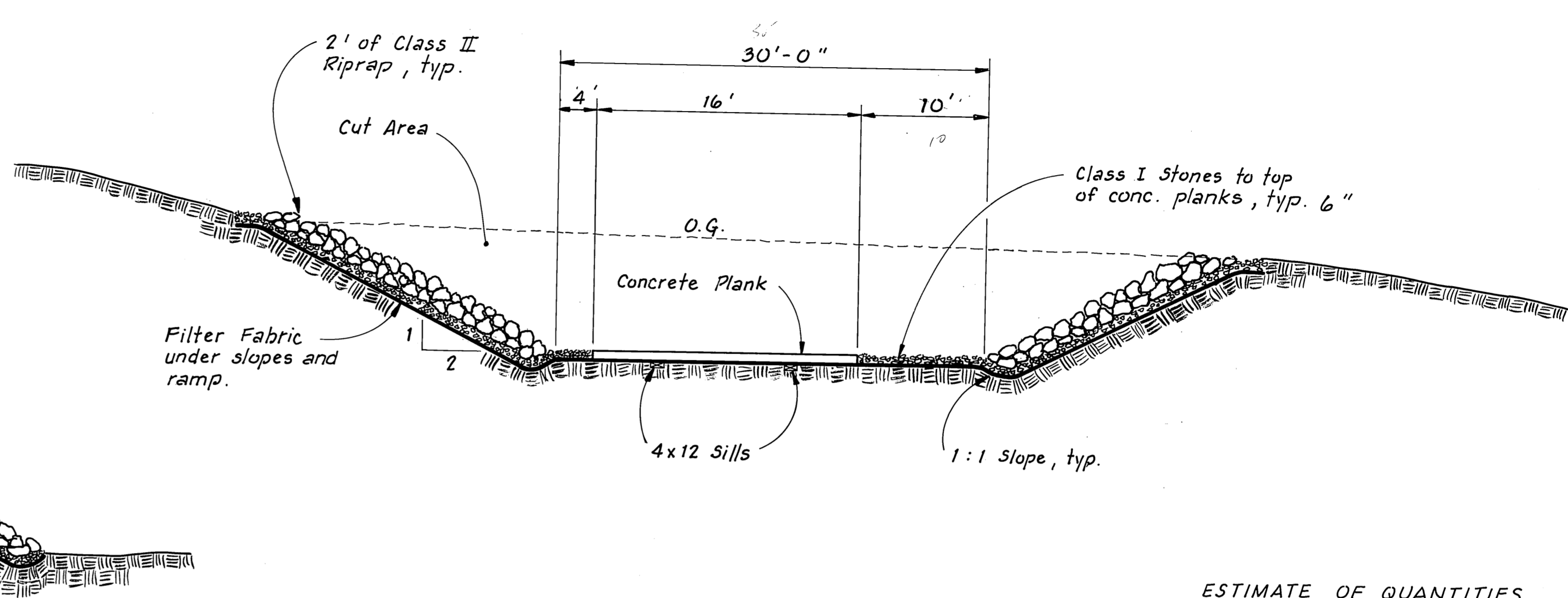
Scale: 1" = 20'

STAMP		DO NOT SCALE THIS DRAWING - USE DIMENSIONS	
		STATE OF ALASKA	
		DEPARTMENT OF TRANSPORTATION AND PUBLIC FACILITIES	
Haines		Alaska	
PROJECT LAYOUT			
DESIGNED	CHECKED	DRAWN T.S.	DATE 8-86
PROJECT NUMBER 69157	SHEET 2 OF 5		

V 998 12/8/87



SECTION B-B
N.T.S.
See sheet 2



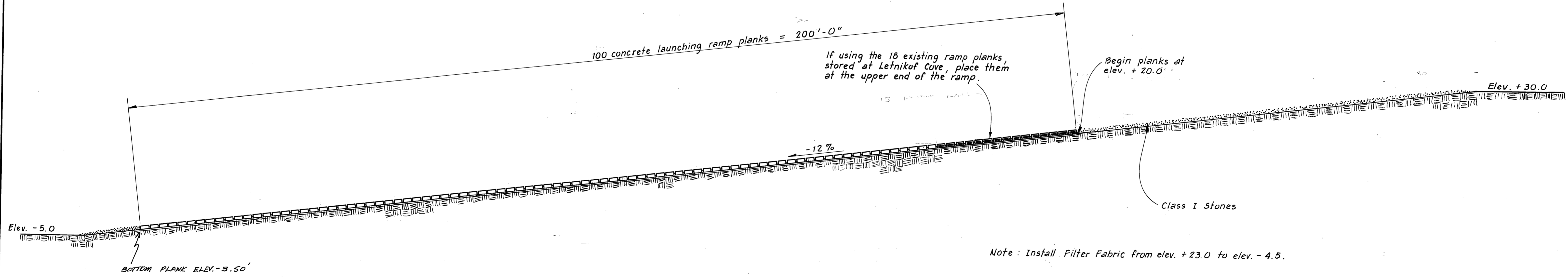
SECTION A-A
N.T.S.
See sheet 2

NOTE: See detail on sheet 4.

ESTIMATE OF QUANTITIES

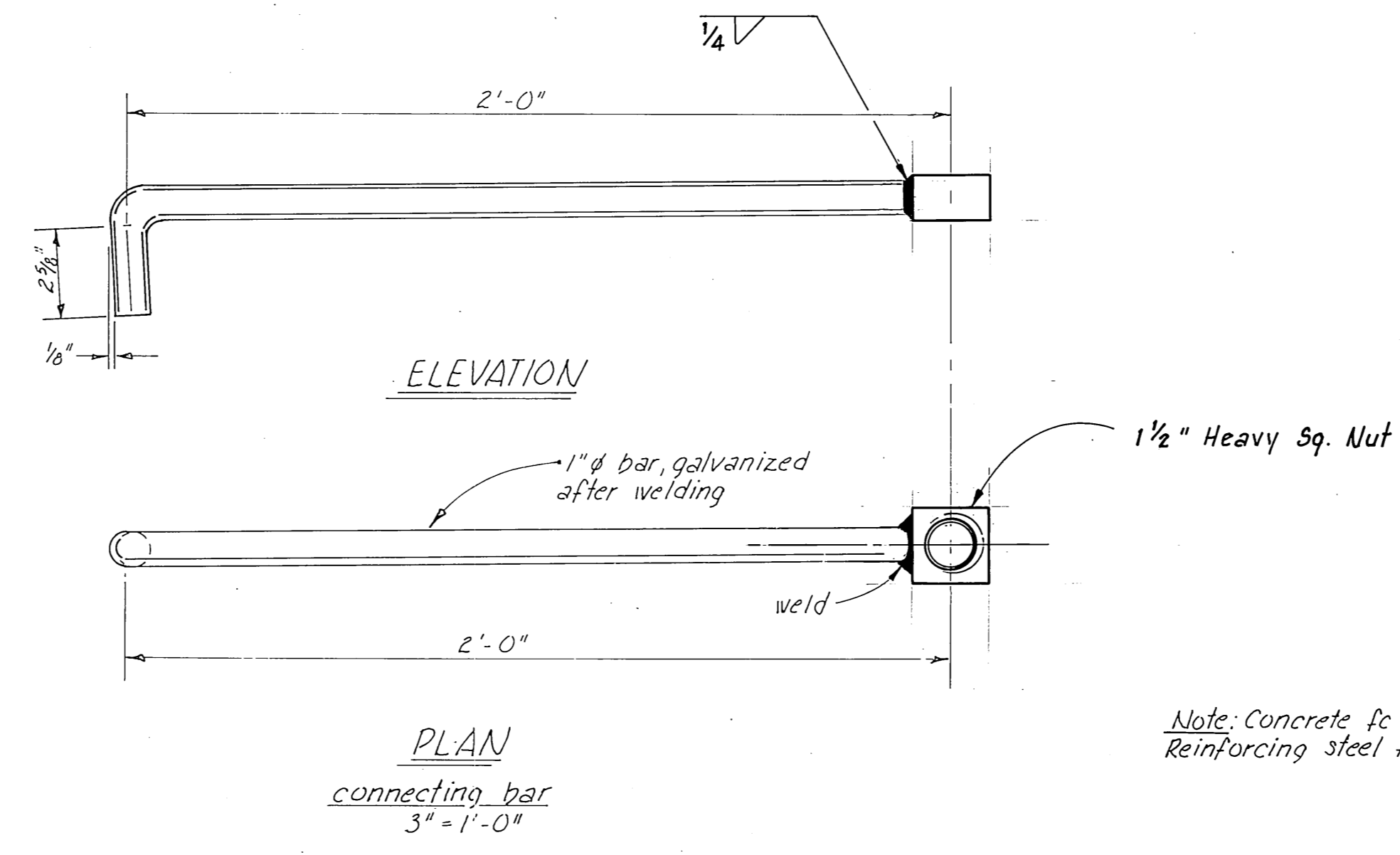
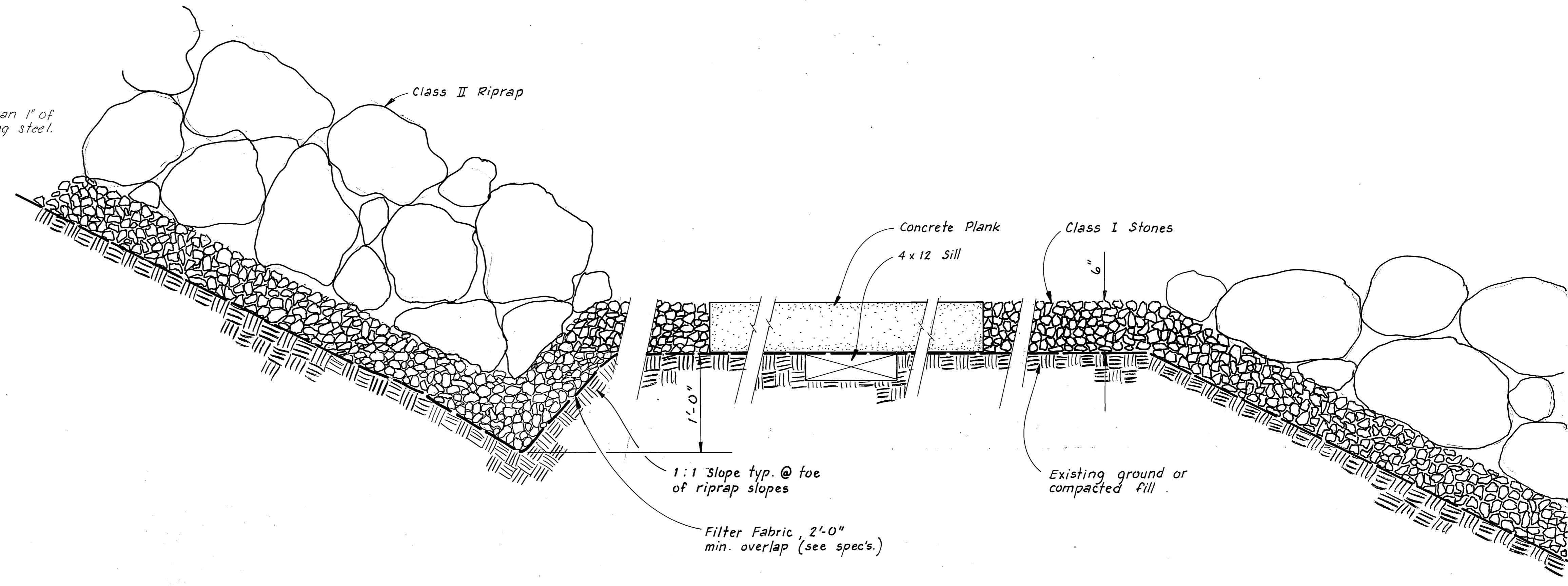
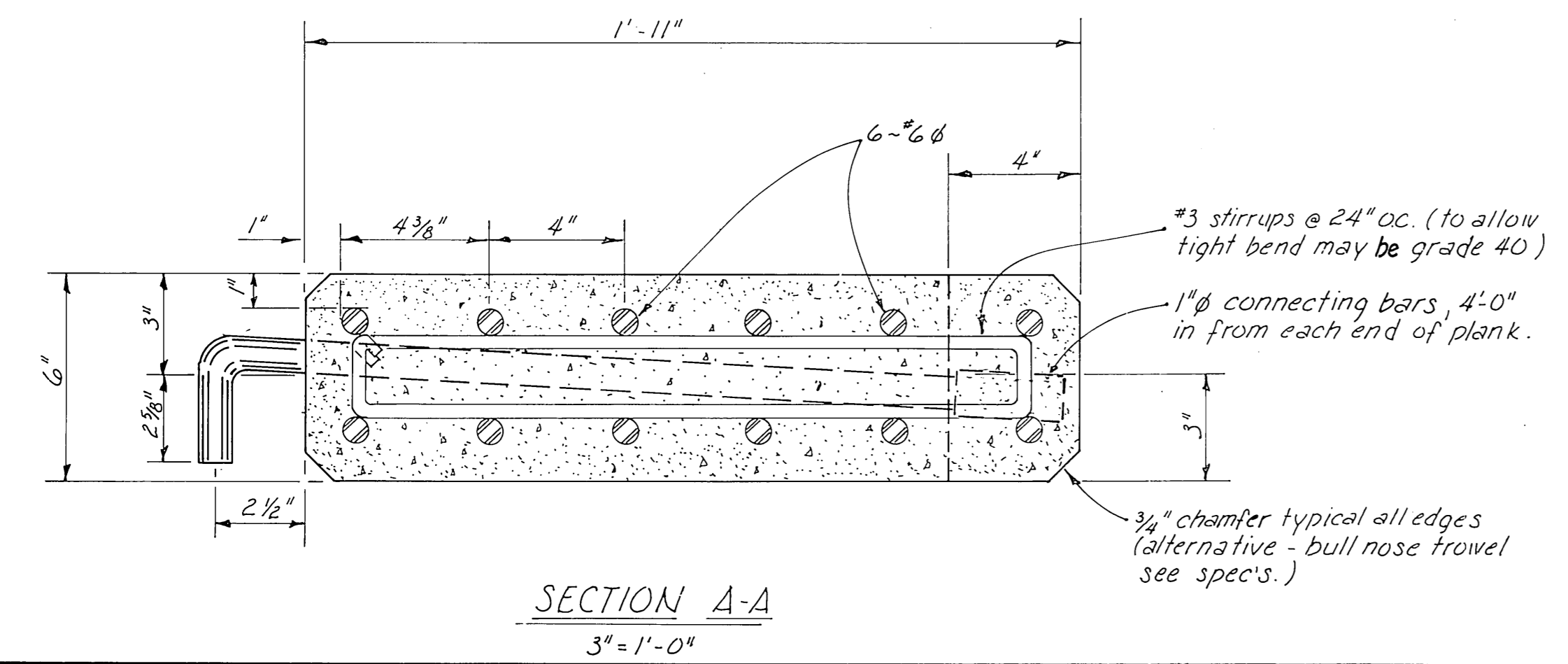
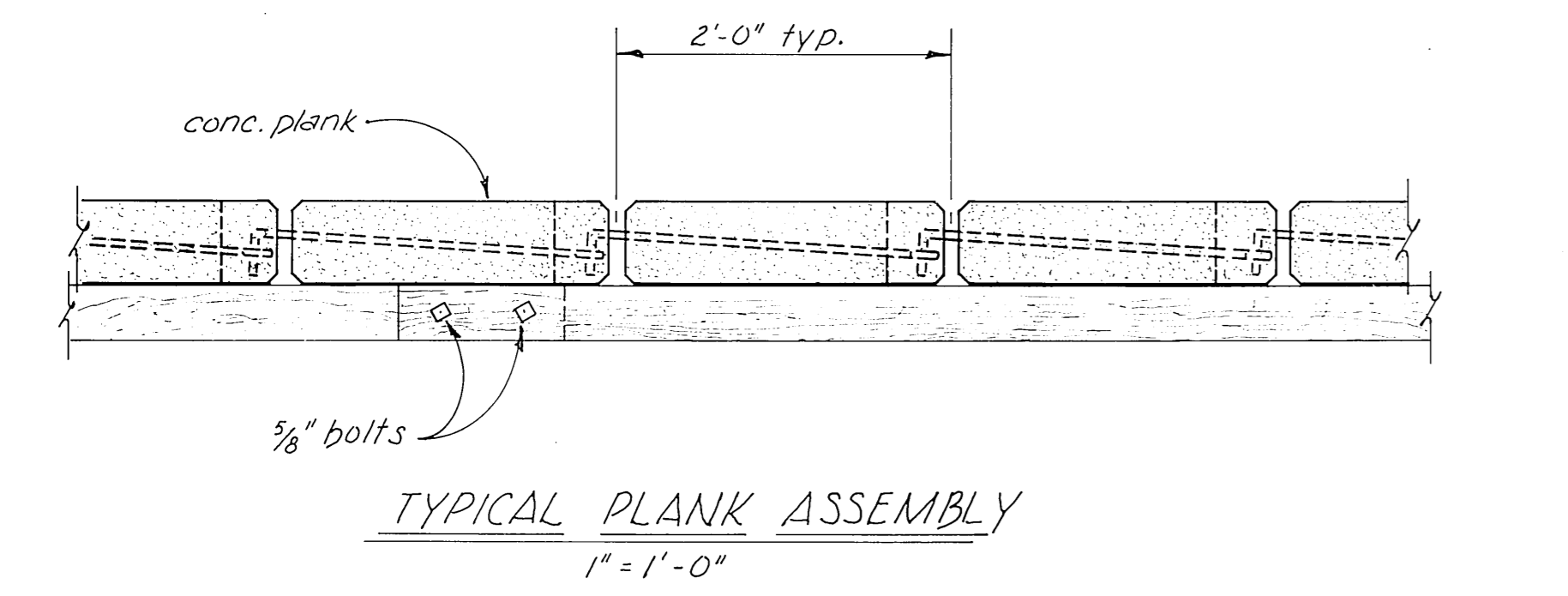
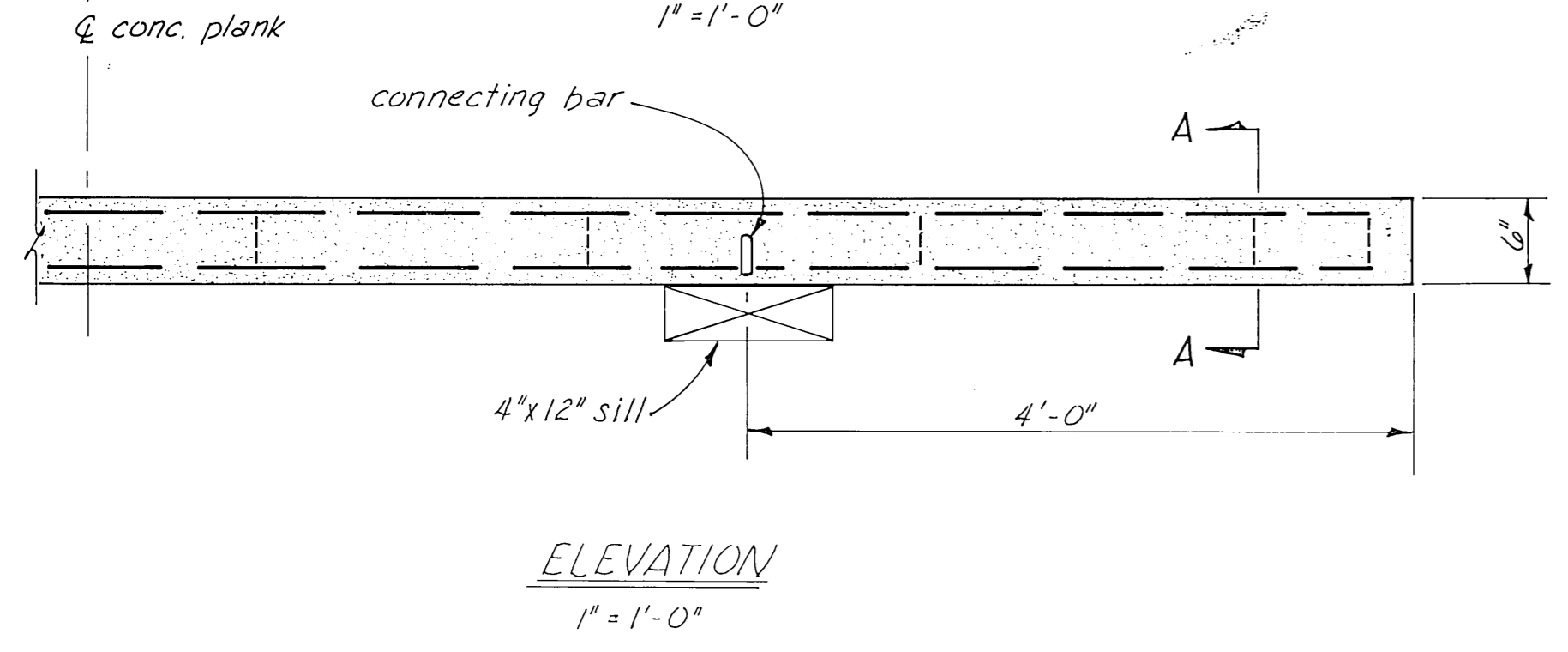
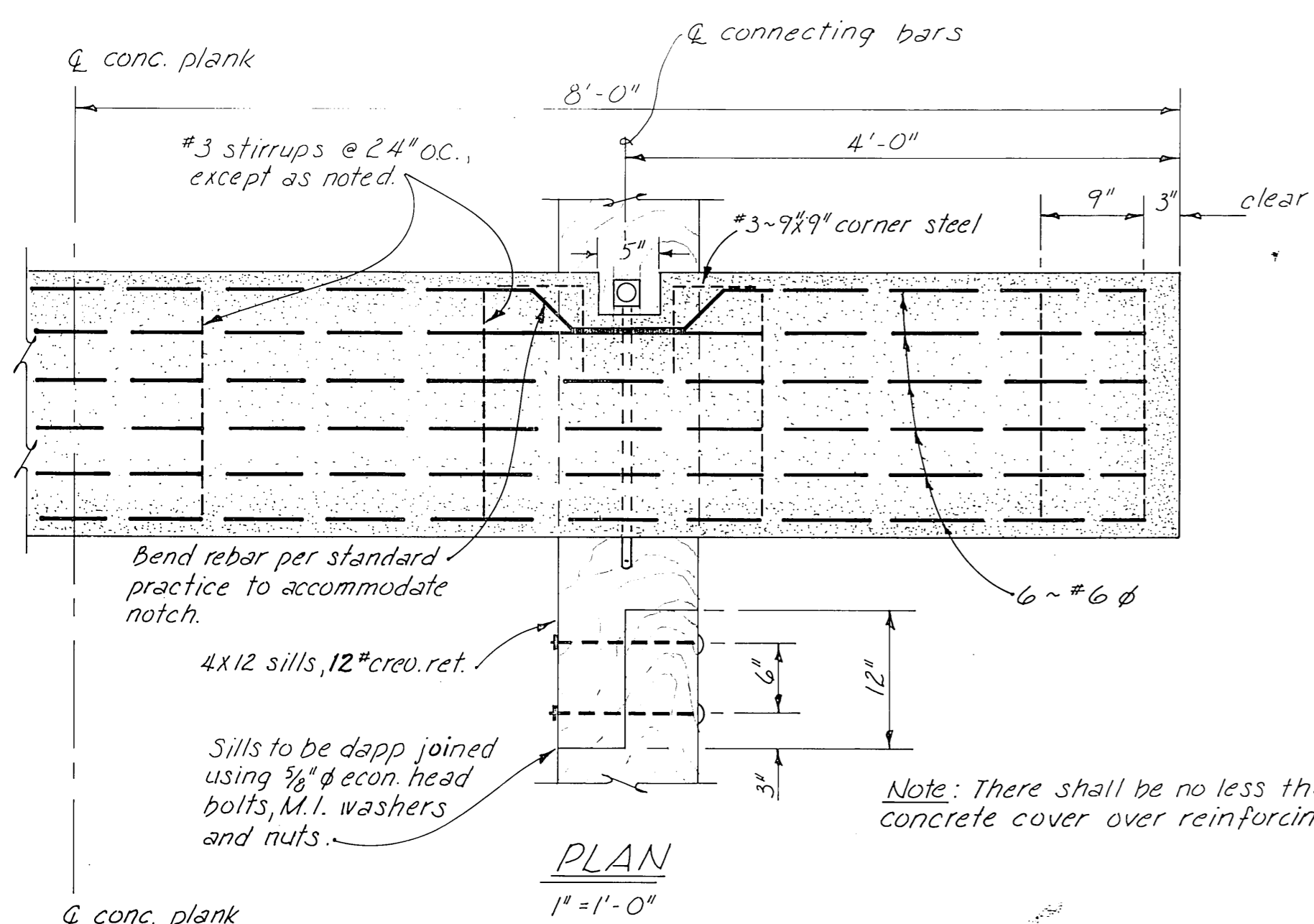
Excavation	900 C.Y.
Fill	650 C.Y.
Class I Stones	200 C.Y.
Class II Riprap	380 C.Y.
Filter Fabric	1500 S.Y.

NOTE: NO WORK SHALL BE CONDUCTED BELOW THE EXTREME HIGH TIDE LINE BETWEEN JANUARY 1 AND JUNE 31.

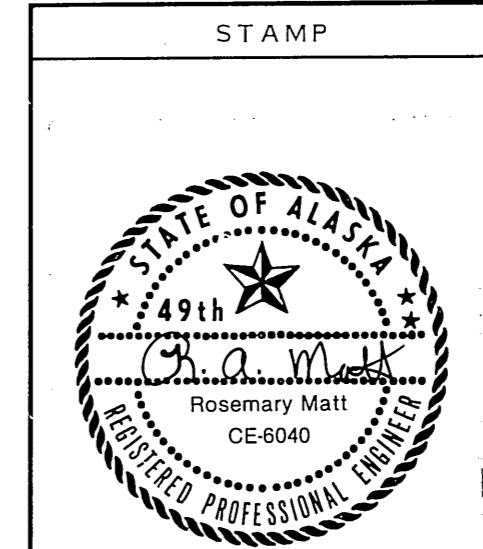


RAMP PROFILE
N.T.S.

	DO NOT SCALE THIS DRAWING - USE DIMENSIONS			
	STATE OF ALASKA DEPARTMENT OF TRANSPORTATION AND PUBLIC FACILITIES			
	DESIGNED _____		CHECKED _____	
PROJECT NUMBER 69157		DATE 7-18-86		
SHEET 3		OF 5		



Note: Concrete $f_c \geq 5000$ psi
Reinforcing steel $f_c = 60,000$ psi

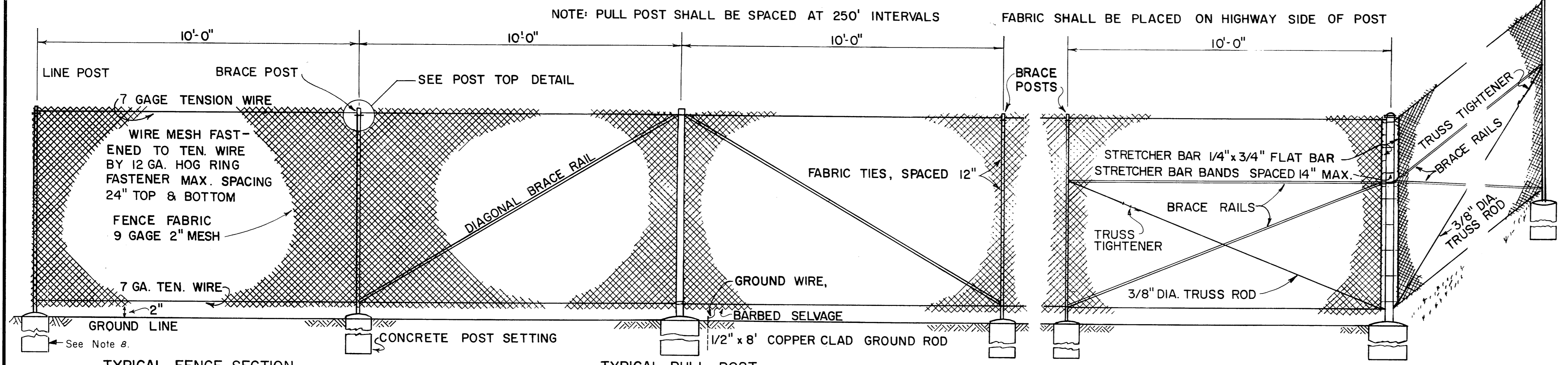


DO NOT SCALE THIS DRAWING - USE DIMENSIONS		
STATE OF ALASKA DEPARTMENT OF TRANSPORTATION AND PUBLIC FACILITIES DIVISION OF HARBOR DESIGN AND CONSTRUCTION		
Haines	Alaska	
CONCRETE PLANK DETAILS		
SCALE <i>As Noted</i>	SURVEYED _____	APPROVED _____
DESIGNED _____	DRAWN <i>GRF</i>	DATE <i>Dec. 1978</i>
CHECKED _____	PROJECT NUMBER <i>69157</i>	SHEET <i>4</i> OF <i>5</i>

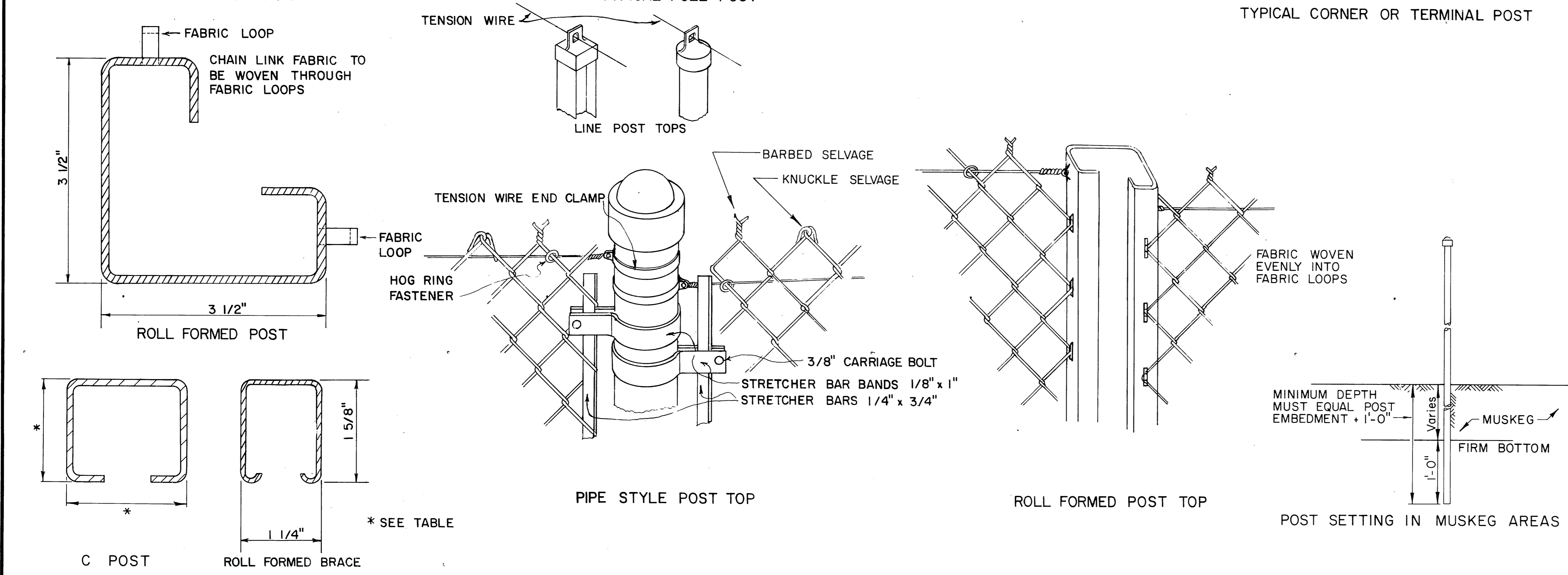
✓ *AMB* 12/8/87

METRIC CONVERSION
 1" = exactly 25.4mm (millimeters)
 1'-0" = exactly 0.3048m (meters)

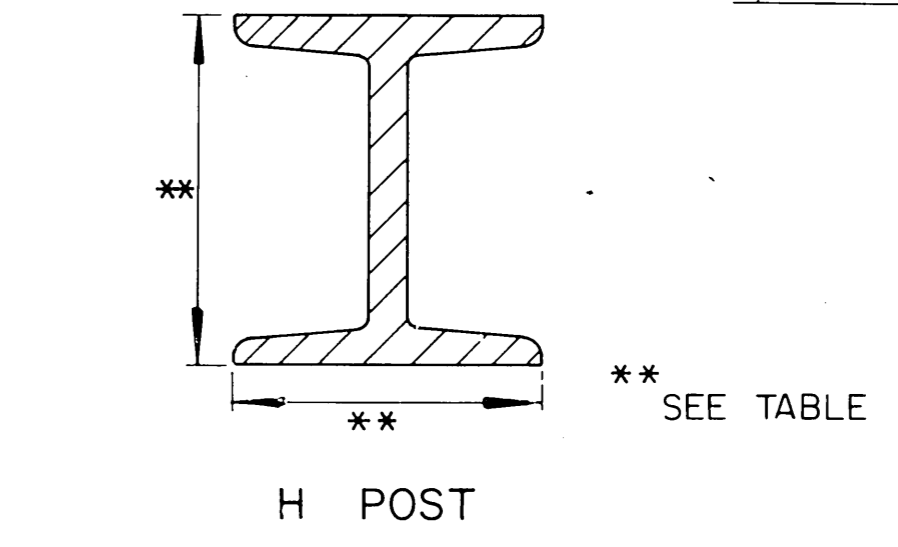
F-01.01



- ### GENERAL NOTES
1. Posts shall be spaced equal distances apart. Maximum spacing shall be 10 feet unless directed otherwise by the engineer.
 2. Post tops shall be securely fastened to post.
 3. Brace rails and truss rods shall be securely fastened to post with brace bands with threaded take-up adaptor for truss rods.
 4. Ground wire shall be attached to fence fabric by means of a split bolt.
 5. Fabric shall be stretched to a smooth uniform appearance.
 6. Details shown indicate general design and dimensions may vary among manufacturers.
 7. For fence gate details see Standard Drawing Chain Link Fence Gate.
 8. Line post shall be set in concrete unless shown otherwise on the plans.



FABRIC HEIGHT	POST												TOP OR BRACE RAIL				ALTERNATE POST						
	END-CORNER-PULL						LINE-BRACE						LINE-BRACE				H POST						
	PIPE SIZE	WT./FT.	SQUARE TUBE SIZE	WT./FT.	ROLL FORMED SIZE	WT./FT.	FOOTING DEPTH	DIA.	PIPE SIZE	WT./FT.	C POST SIZE	WT./FT.	FOOTING DEPTH	DIA.	PIPE SIZE	WT./FT.	ROLL FORMED SIZE	WT./FT.	H POST SIZE	WT./FT.	H POST SIZE	WT./FT.	
3'	2"	3.65 #	2" x 2"	4.31 #	3-1/2" x 3-1/2"	4.84 #	40"	10"	1-1/2"	2.72 #	1-7/8" x 1-5/8"	2.28 #	28"	10"	1-1/4"	2.27 #	1-5/8"	1.35 #	1-1/2" x 1-5/16"	2.27 #	1-7/8" x 1-5/8"	2.72 #	
4'	"	"	"	"	"	"	"	"	"	"	"	"	"	"	"	"	"	"	"	"	"	"	
5'	2"	3.65 #	2" x 2"	4.31 #	3-1/2" x 3-1/2"	4.84 #	40"	10"	1-1/2"	2.72 #	1-7/8" x 1-5/8"	2.28 #	28"	10"	"	"	"	"	"	"	"	1-7/8" x 1-5/8"	2.72 #
6'	2 1/2"	5.79 #	2-1/2" x 2-1/2"	5.59 #	3-1/2" x 3-1/2"	4.84 #	48"	15"	2"	3.65 #	2-1/4" x 1-45/64	2.64 #	40"	12"	"	"	"	"	"	"	"	2-1/4" x 2"	4.1 #
7'	"	"	"	"	"	"	"	"	"	"	"	"	"	"	"	"	"	"	"	"	"	"	"
8'	2-1/2"	5.79 #	2-1/2" x 2-1/2"	5.59 #	3-1/2" x 3-1/2"	4.84 #	48"	15"	2"	3.65 #	2-1/4" x 1-45/64	2.64 #	40"	12"	"	"	"	"	"	"	"	2-1/4" x 2"	4.1 #



REVISIONS		
Date	Description	By
3/1/83	Revised Gen. Notes	WJF/HR

STATE OF ALASKA
 DEPARTMENT OF TRANSPORTATION
 & PUBLIC FACILITIES

CHAIN LINK FENCE

APPROVED

Date: 7/15/82