

**STATE OF ALASKA
DEPARTMENT OF TRANSPORTATION
&
PUBLIC FACILITIES**

**PLAN AND PROFILE
PROPOSED HIGHWAY PROJECT
HAINES-UNION ST. &
2ND AVE. INTERSECTION
RS-0937(20) A30102
(68775)**

STATE	PROJECT	SHEET NO.	TOTAL SHEETS
ALASKA	RS-0937(20)	1	2

INDEX OF SHEETS	
1	TITLE SHEET
2	DETAILS

THE FOLLOWING STANDARD DRAWINGS SHALL APPLY TO THIS PROJECT : A-1, C-01.02, C-02.00, I-20.01.

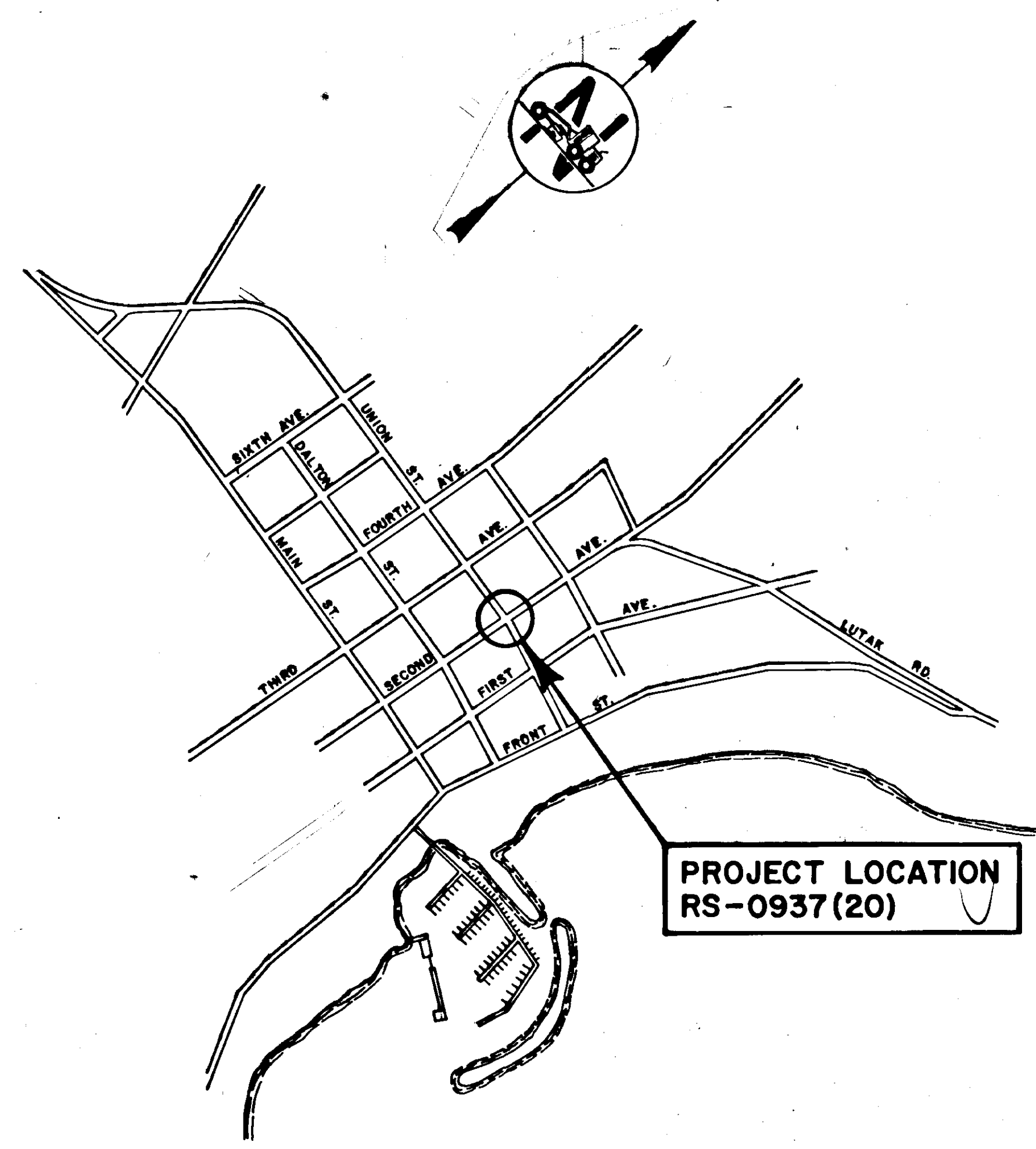
*AS-BUILT PLANS
NORTHERN TIMBER
Proj Eng - Larry Geise
September - 1986*

DESIGN SPEED
10 M.P.H.

PROJECT SUMMARY
IMPROVE TURNING RADIUS IN NORTHWEST QUADRANT OF INTERSECTION TO ACCOMMODATE WB 50 VEHICLES.

DESIGN DESIGNATION

ADT 1986	735
ADT 2007	990
DHV 20%	.198
% T.	.8%
T.I.	7.0



DEPARTMENT OF TRANSPORTATION
&
PUBLIC FACILITIES

APPROVED *May 20*, 1986
Date

D. Dickmeyer
DIRECTOR HIGHWAYS, DESIGN
&
CONSTRUCTION

STATE OF ALASKA
DEPARTMENT OF TRANSPORTATION
&
PUBLIC FACILITIES

APPROVED
Wallace K. Williams Date *5-21-86*
S.E. REGION DESIGN ENGINEER

VERTICAL CONTROL is based on the monument located in the center of the intersection of Union St. and Second Ave. The elevation of the monument is assumed to be + 113.00'. HORIZONTAL CONTROL is the record bearing of Union St., between Second Ave. and Third Ave., of N 79° 25' 15" W.

STATE	PROJECT DESIGNATION	YEAR	SHEET NO.	TOTAL SHEETS
ALASKA	F-095-G(9)	1986	2	2

ESTIMATE OF QUANTITIES

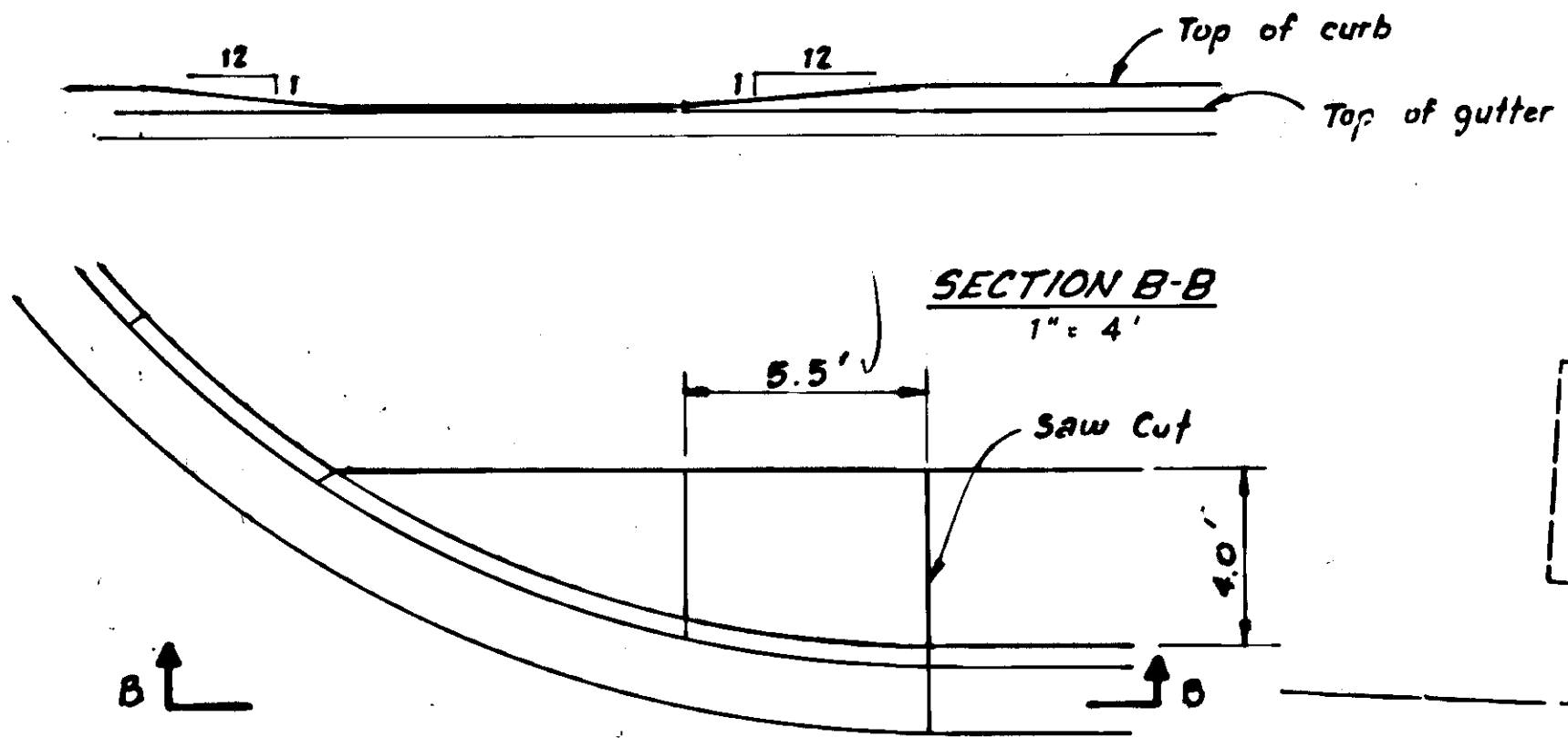
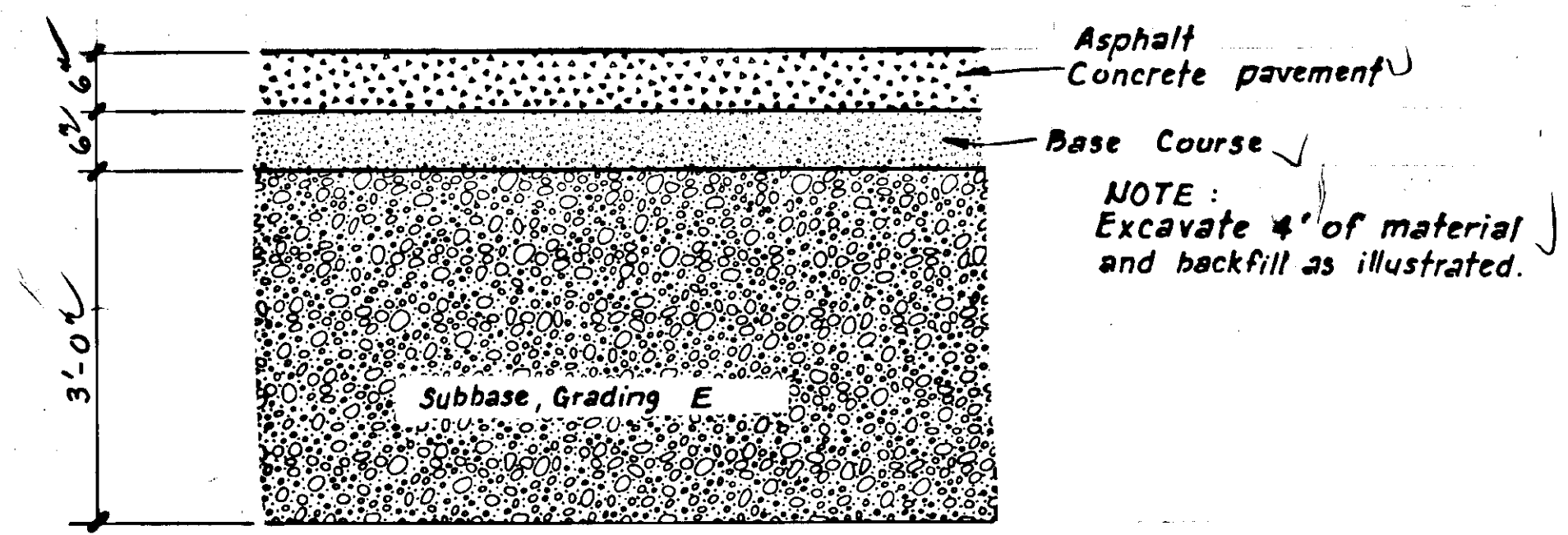
PAY ITEM NO.	PAY ITEM	PAY UNIT	QUANTITY	AMOUNT
113(1)	Flagging	M.H.	All Required	10 MAN HRS.
114(1)	Construction Surveying by the Contractor	L.S.	All Required	
202(11)	Remove Existing Curb, Gutter & Sidewalk	L.S.	All Required	
203(8)	Unclassified Excavation	L.S.	All Required	
301(3)	Crushed Aggregate Base Course	L.S.	All Required	11 TONS
304(4)	Subbase, Grading E	L.S.	All Required	65 TONS
401(7)	Asphalt Concrete, Type II and Asphalt Cement	L.S.	All Required	
608(4)	Wheelchair Ramp	Each	All Required	1
609(2)	Curb & Gutter, Standard Type	L.S.	All Required	73 L.F.

BASIS OF ESTIMATE

ITEM	ESTIMATING FACTORS
301(3)	1.96 Tons / Cu. Yds.
304(4)	1.98 Tons / Cu. Yds.
401(7)	114*/sq. Yd. / Inch Depth

NOTES

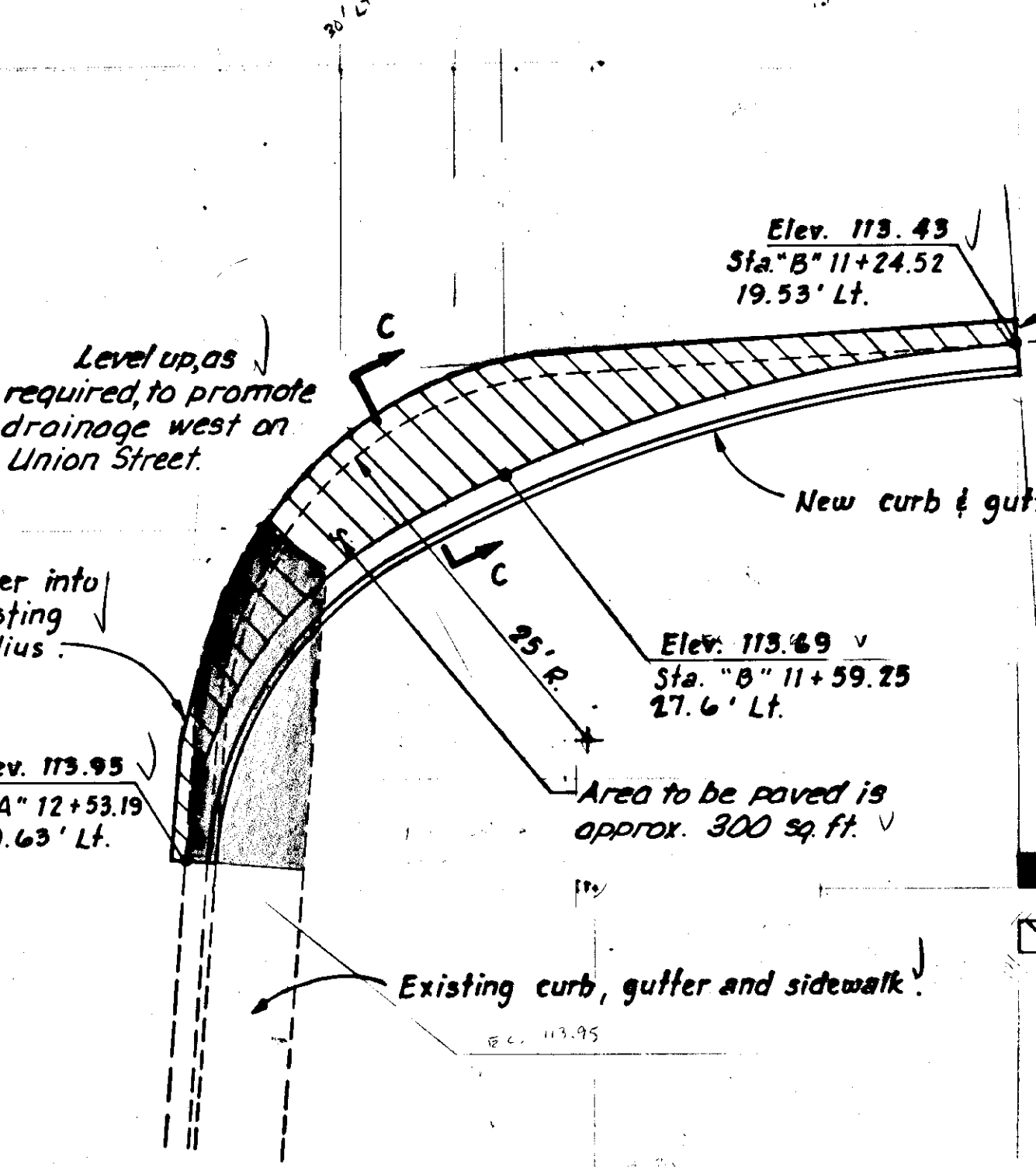
- Curb and gutter expansion joints shall be located at each curb cut.
- Exact location of the wheelchair ramp shall be designated by the Engineer.
- Ramp slopes shall not be steeper than 1:12.
- Construction signs are required in all four directions of the intersection per standard drawings C-01.02 & C-02.00.
- Material inside curb where sidewalk is not existing shall be compacted and leveled to match top of curb elevations for a width equivalent to existing sidewalk.
- Wheelchair ramp shall have a "facile warning surface" to be created by pressure washing the concrete after the initial set, to expose coarse aggregate.



NOTE: Curb & gutter not shown.

SECTION C-C

3/4" = 1'-0"

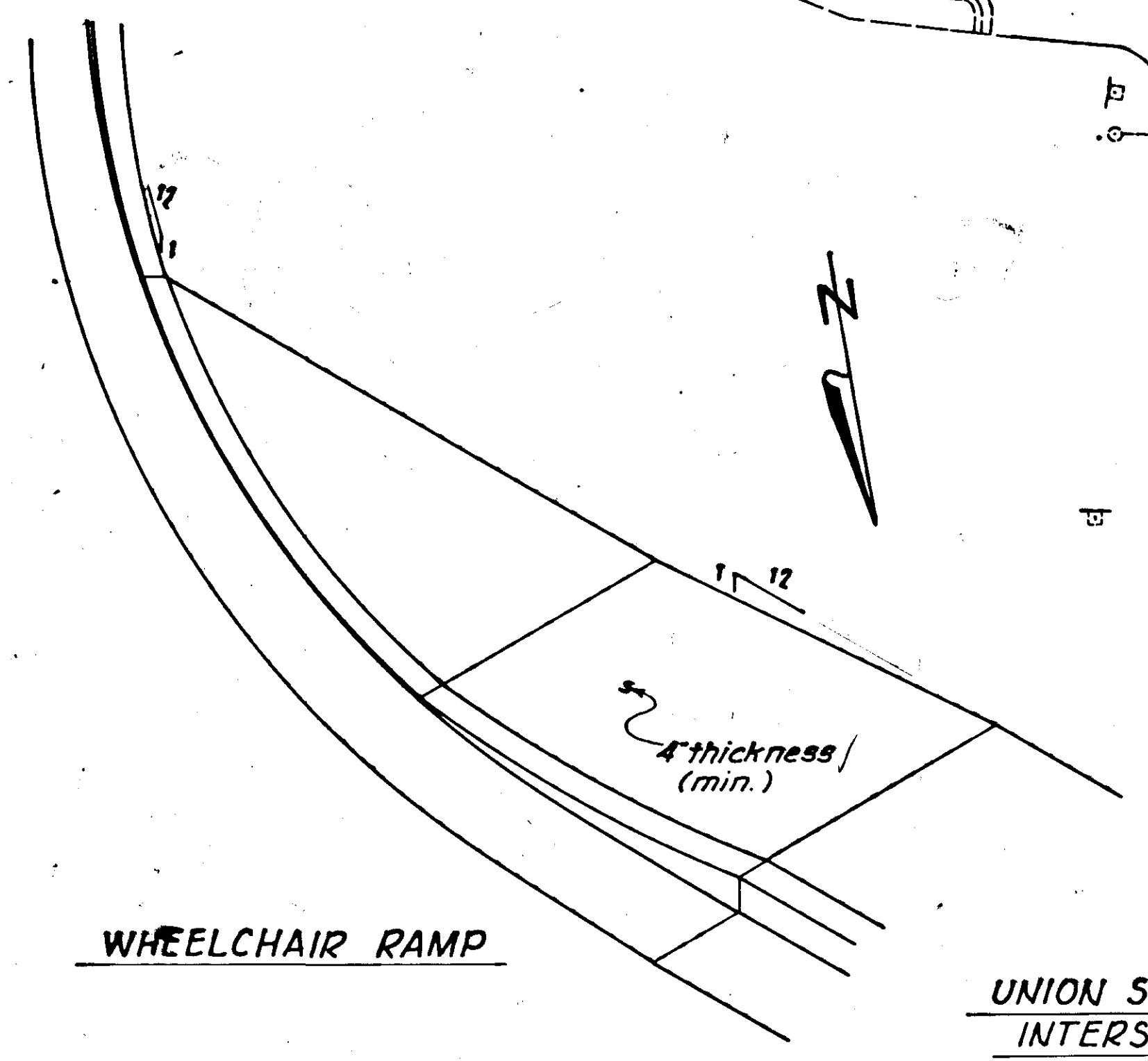


Saw cut 1' into existing A.C. pavement (so new A.C. pavement can be compacted). Saw cut all edges so a smooth vertical surface exists.

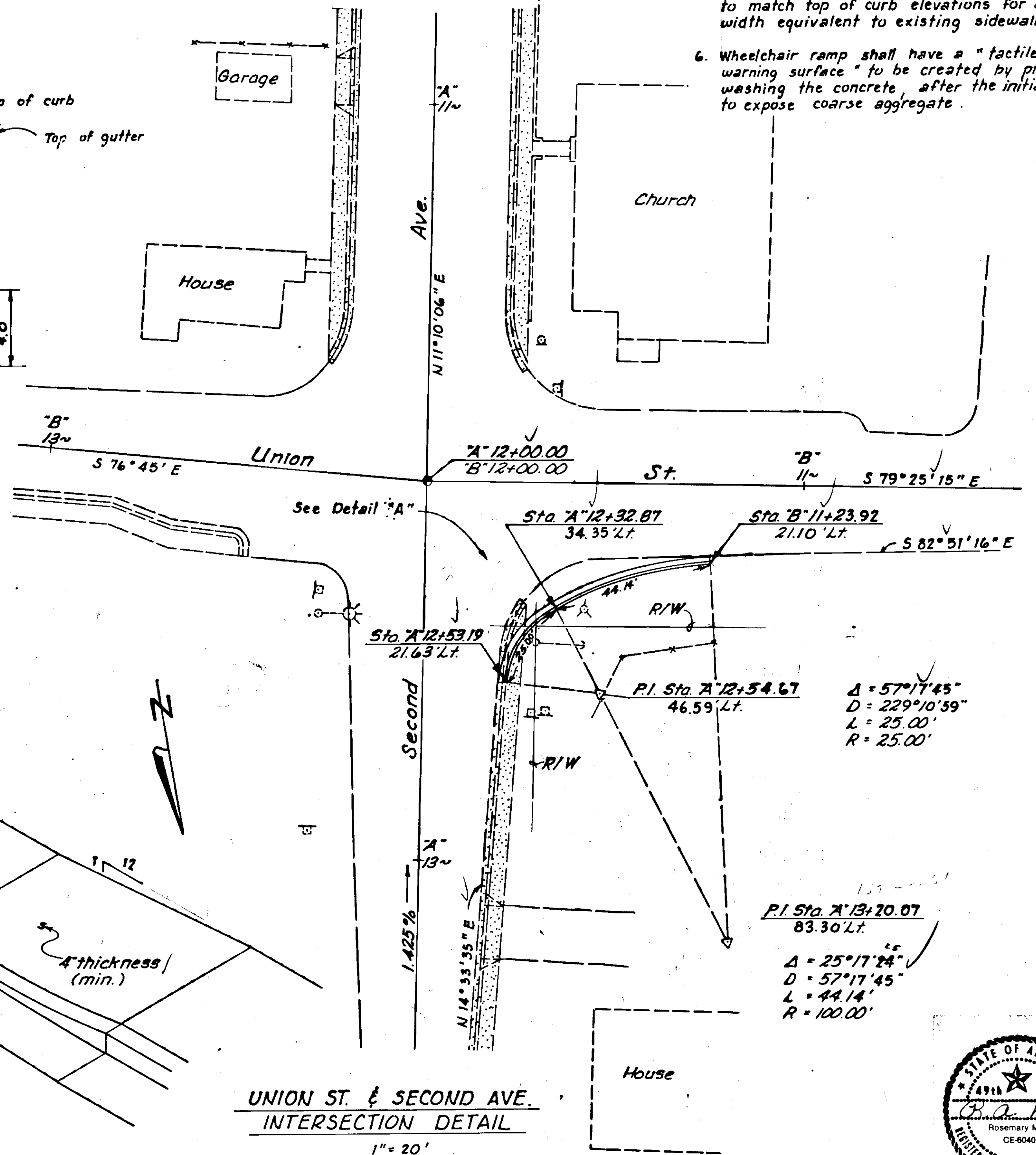
Existing curb, gutter and sidewalk to be removed.
New asphalt concrete pavement.

WHEELCHAIR RAMP DETAILS

N.T.S.



WHEELCHAIR RAMP



UNION ST. & SECOND AVE. INTERSECTION DETAIL

1" = 20'

