

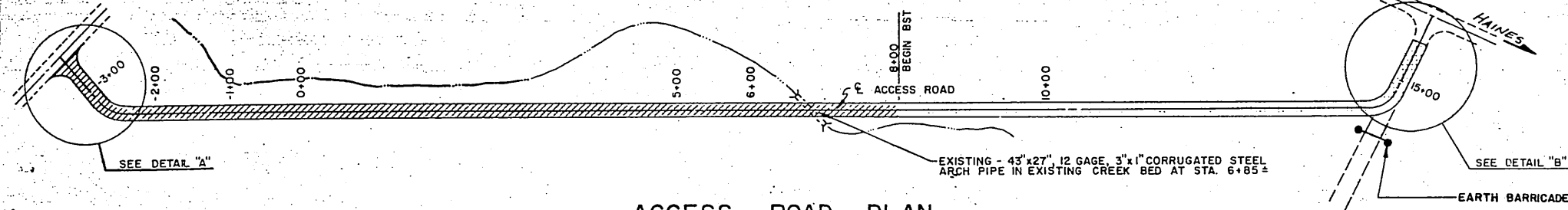
ESTIMATE OF QUANTITIES			
ITEM NO.	ITEM	UNIT	QUANTITY
114 (1)	CONSTRUCTION SURVEYING BY THE CONTRACTOR	L.S.	ALL REQ.D
115 (1)	TRAFFIC MAINTENANCE	L.S.	ALL REQ.D
302(3)	PROCESSING FOR SUBGRADE MODIFICATION	STA.	7.6
304(1C)	SUBBASE, GRADING C	TON	330 680.9
403(2)	MC-30 LIQUID ASPHALT FOR PRIME COAT	TON	6.2 2.0
405(1)	CRS-2 ASPHALT FOR SURFACE TREATMENT	TON	3.1 11.6
405(2A)	GRADING B-COVER COAT MATERIAL	TON	1.4 45.71
405(2B)	GRADING E-COVER COAT MATERIAL	TON	2.3 49.46
618(2)	SEEDING	ACRE	0.34
304(A)	Subbase Grading 'A'	TON	1537.67

BASIS OF ESTIMATE	
ITEM NO.	ESTIMATING FACTORS
600 A	0.3 GAL. PER SQ. YARD 240 GAL. PER TON
650 A	240 GAL. PER TON

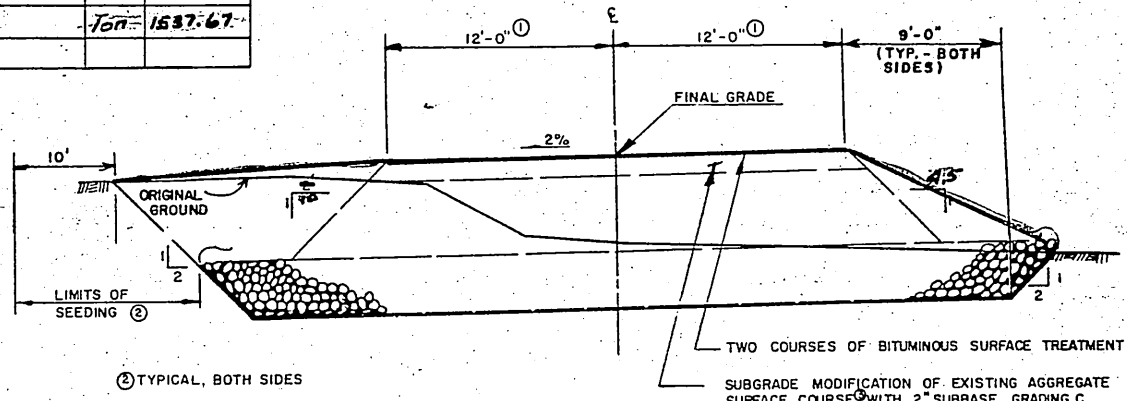
DETAIL "A"
NO SCALE

DETAIL "B"
NO SCALE

① 15' FOR CURVE WIDENING. SEE DETAIL B.

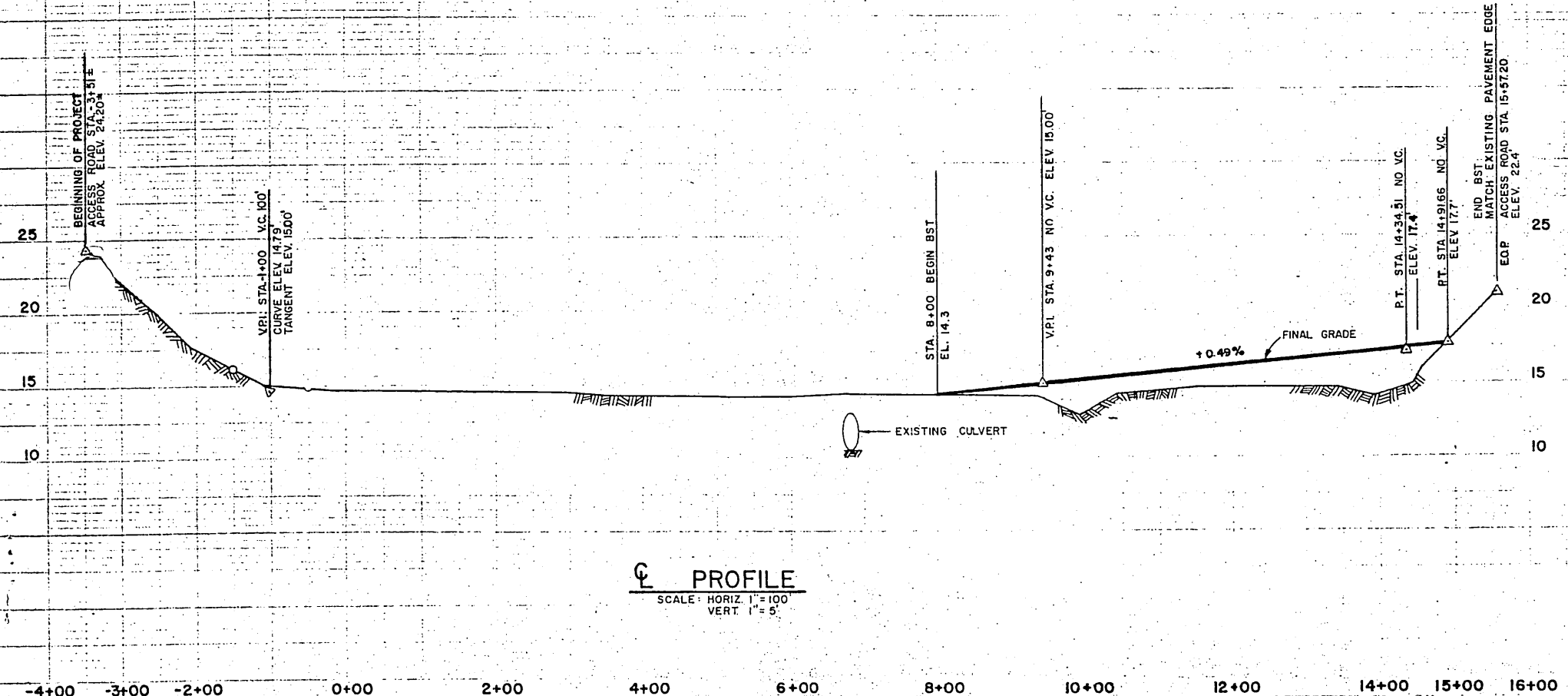


ACCESS ROAD PLAN
SCALE: 1" = 100'

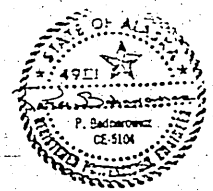


TYPICAL SECTION
SCALE: HORIZ 1" = 5'
VERT. 1" = 2.5'

③ EXISTING SURFACING CONSISTS OF 6" AGGREGATE SURFACE COURSE.



PROFILE
SCALE: HORIZ 1" = 100'
VERT. 1" = 5'



STATE OF ALASKA
DEPARTMENT OF TRANSPORTATION
AND PUBLIC FACILITIES
S.E. REGION, DIVISION OF AVIATION DESIGN & CONSTRUCTION

HAINES AIRPORT
A.D.A.P. No. 6-02-0112-01
ACCESS ROAD PLAN & PROFILE

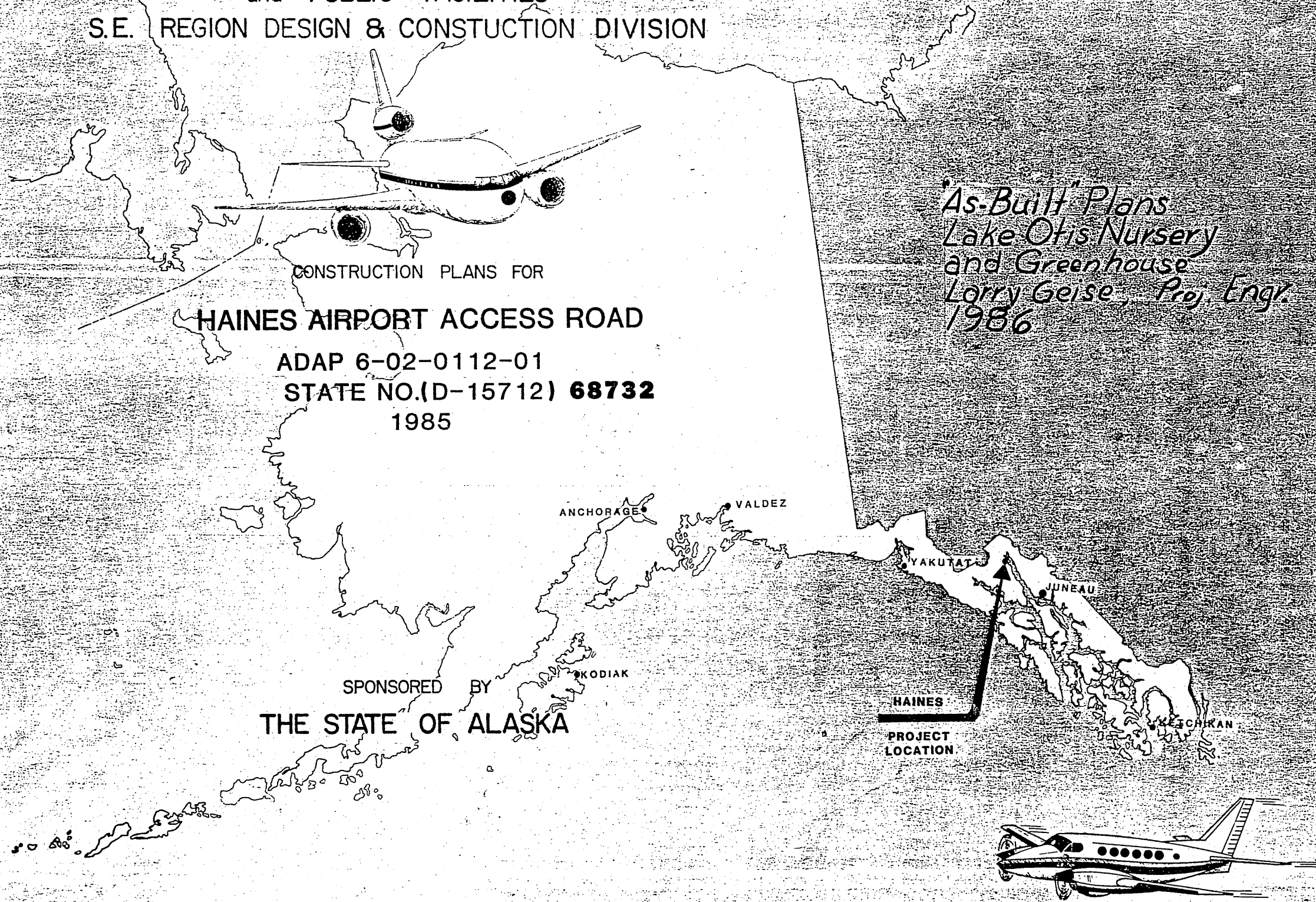
BY	DATE	CHANGE	REVISIONS

APPROVED BY:	Wallace R. Williams, PE	8/13/85
DESIGNED BY:	William L. Baunigartner, PE	8/13/85
CHECKED BY:	DR	MB
DATE:		

INDEX OF SHEETS

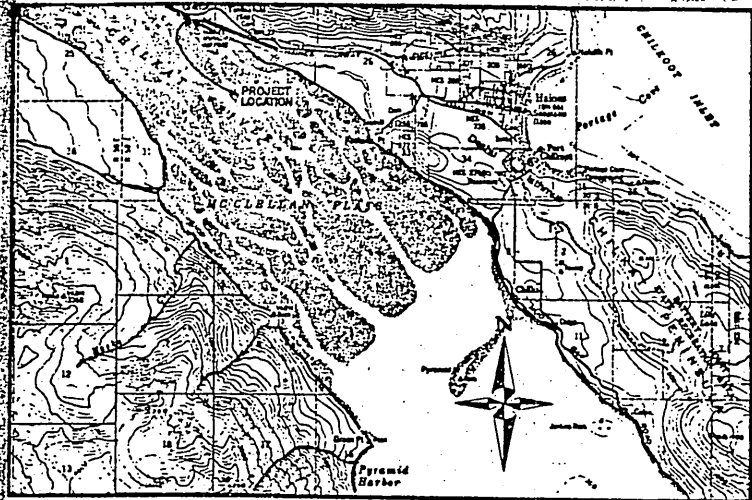
- 1 TITLE SHEET
- 2 PLAN AND PROFILE AND ESTIMATE OF QUANTITIES
- 3 SPECIAL DETAILS
- 4 & 5 DRIVE THROUGH GATE & DETAILS

STATE OF ALASKA
DEPARTMENT OF TRANSPORTATION
and PUBLIC FACILITIES
S.E. REGION DESIGN & CONSTRUCTION DIVISION



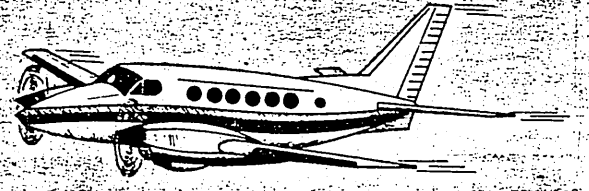
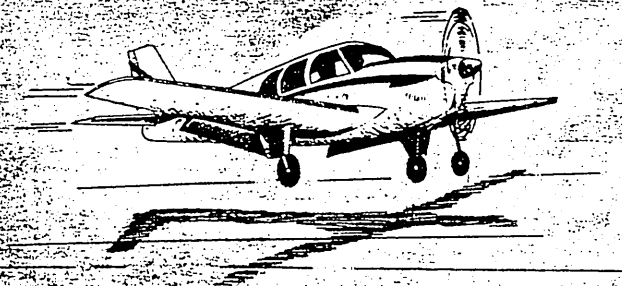
*'As-Built' Plans
Lake Otis Nursery
and Greenhouse
Lorry Geise, Proj. Engr.
1986*

CONSTRUCTION PLANS FOR
HAINES AIRPORT ACCESS ROAD
ADAP 6-02-0112-01
STATE NO.(D-15712) **68732**
1985



VICINITY MAP

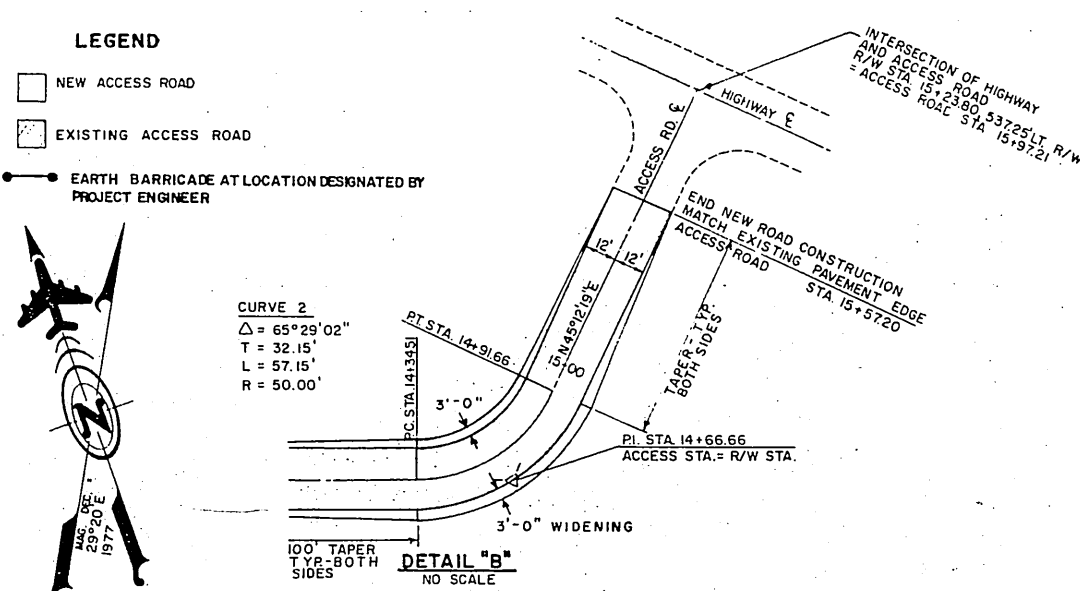
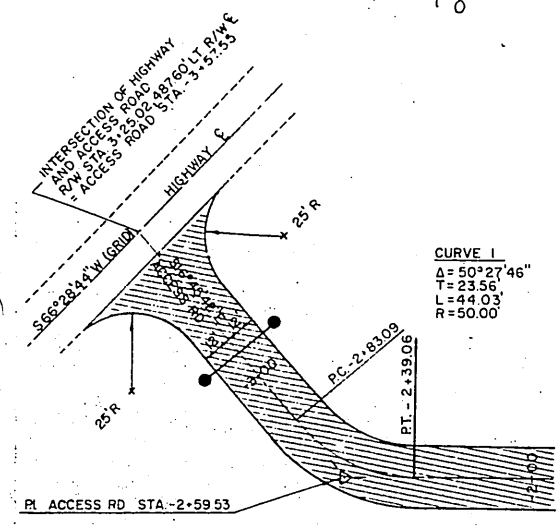
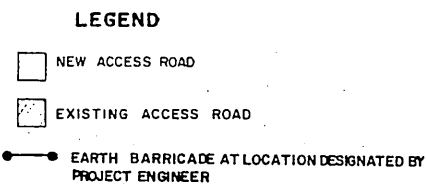
SPONSORED BY
THE STATE OF ALASKA



APPROVED
Donald D. Dieckmeyer
DONALD D. DIECKMEYER, DIRECTOR, S.E. REGION DESIGN & CONSTRUCTION
DATE 8/13/85

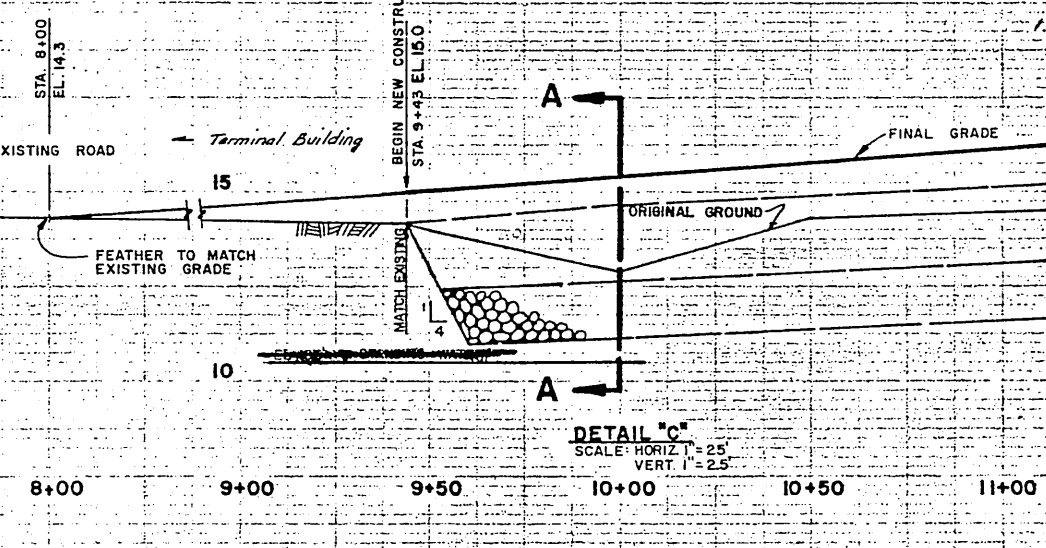
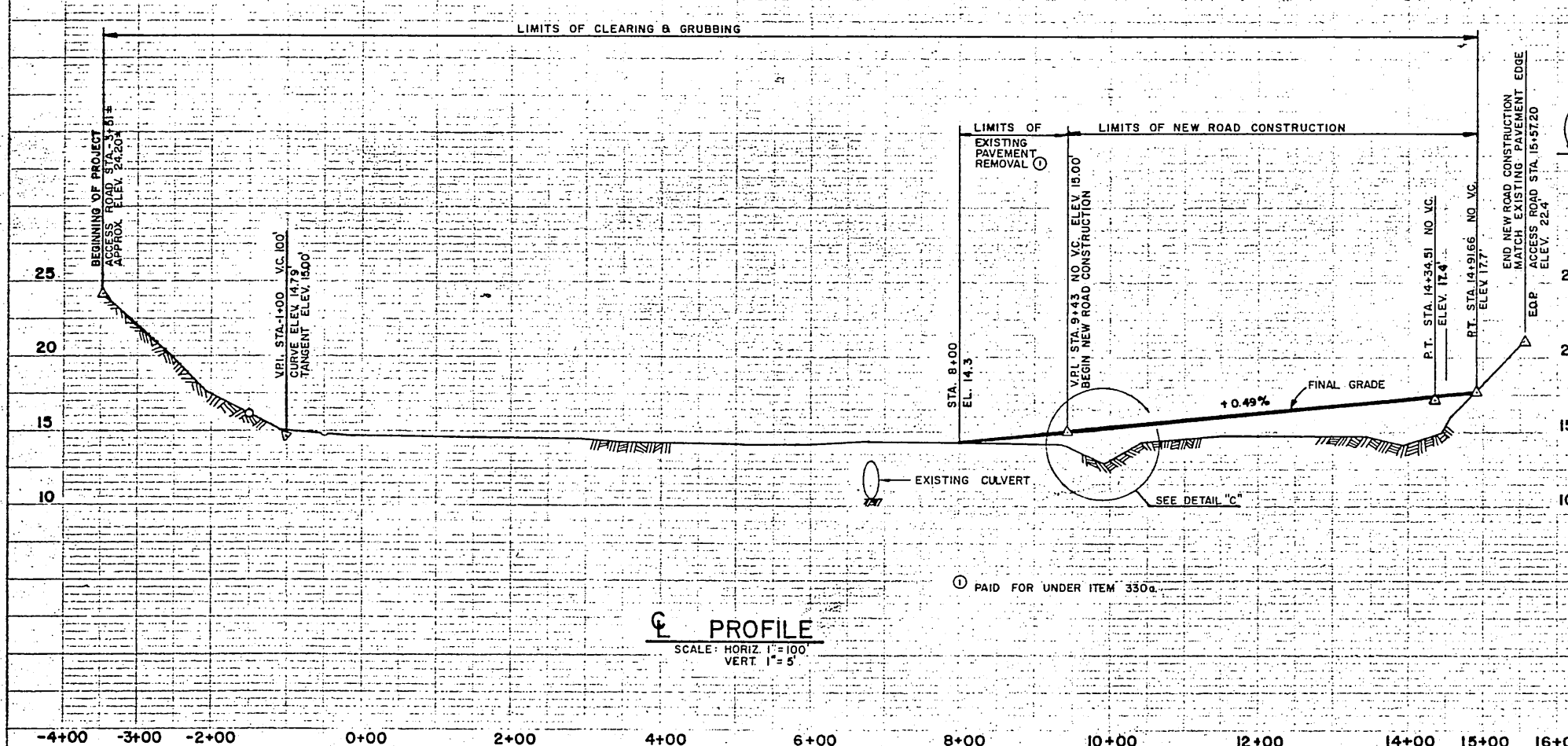
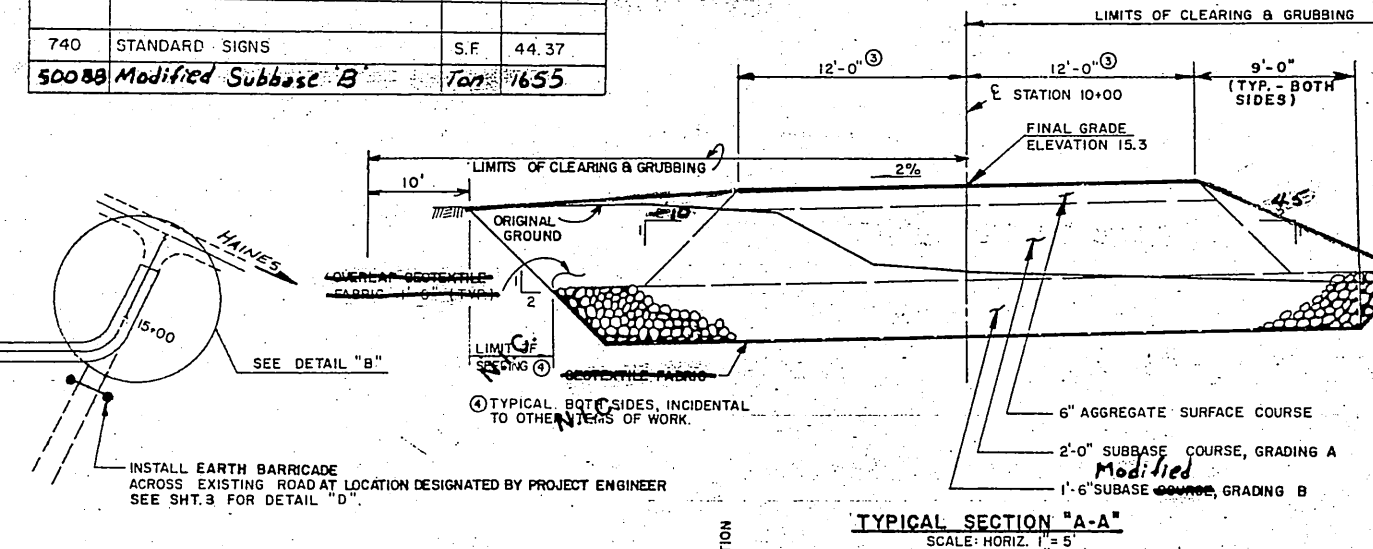
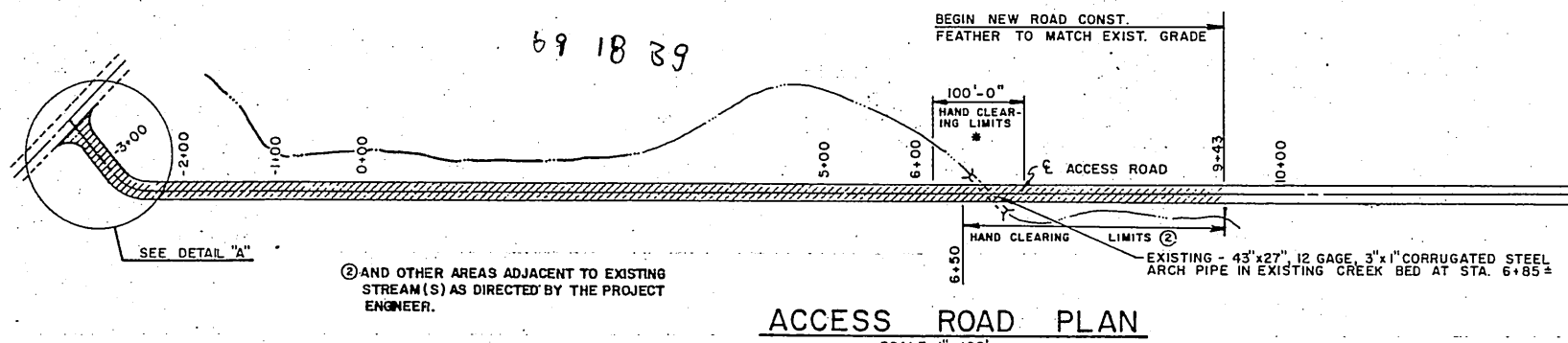
APPROVED
Wallace K. Williams
WALLACE K. WILLIAMS, DESIGN CHIEF, S.E. REGION DESIGN & CONSTRUCTION
DATE 8/13/85

18 50 53



ITEM NO.	ITEM	UNIT	QUANTITY
90	MBE AND MBE ADJUSTMENTS	C.S.	ALL REQ.D
100	MOBILIZATION & DEMOBILIZATION	L.S.	ALL REQ.D
115(1)	TRAFFIC MAINTENANCE	L.S.	ALL REQ.D
121	CONSTRUCTION SURVEYING BY THE CONTRACTOR	L.S.	ALL REQ.D
200	CLEARING AND GRUBBING	L.S.	ALL REQ.D
330a	UNCLASSIFIED EXCAVATION	C.Y.	2,000
440b	DRIVE THROUGH GATE	EACH	1
500a	SUBBASE GRADING A	C.Y.	1,223
500b	SUBBASE GRADING B	C.Y.	1,205
540	AGGREGATE SURFACE COURSE	C.Y.	4,485
550	GEOTEXTILE SEPARATION	S.Y.	2,535
740	STANDARD SIGNS	S.F.	44.37
50088	Modified Subbase 'B'	Ton	1655

GENERAL NOTE
 BOTH SIDES OF EXISTING ROADWAY SHALL BE CLEARED 15' FROM EDGE OF SHOULDER, FROM B.O.P. TO STA. 9+43. ① 15' FOR CURVE WIDENING. SEE DETAIL B.



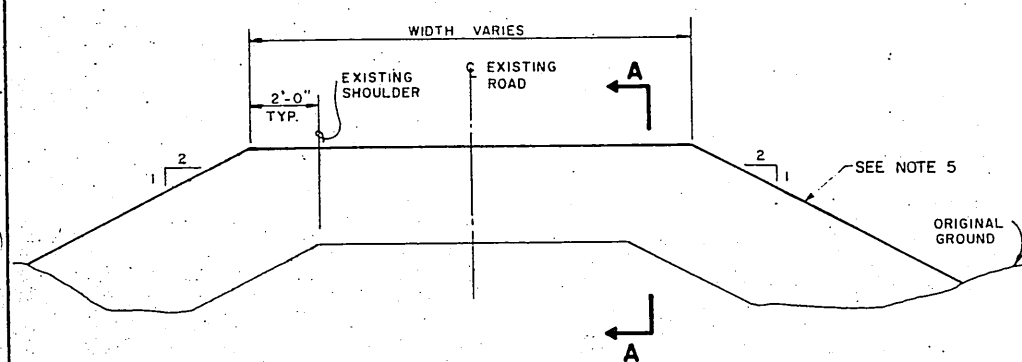
STATE OF ALASKA
 DEPARTMENT OF TRANSPORTATION
 AND PUBLIC FACILITIES
 S.E. REGION, DIVISION OF AVIATION DESIGN & CONST.

HAINES AIRPORT
 A.D.A.P. No. 6-02-0112-01
 ACCESS ROAD PLAN & PROFILE

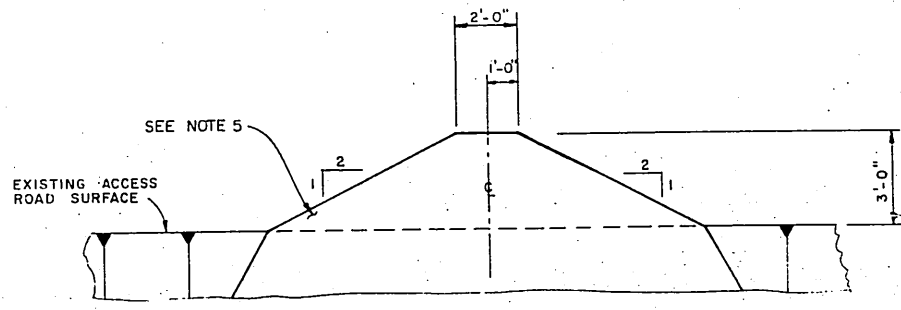
N.I.C. NOT IN CONTRACT

APPROVED BY:	Wallace K. Williams, PE	8/13/85	
APPROVED BY:	William L. Baumgartner, PE	8/12/85	
DESIGNED:	DTR	DRAWN:	MB
CHECKED:	PB	DATE:	

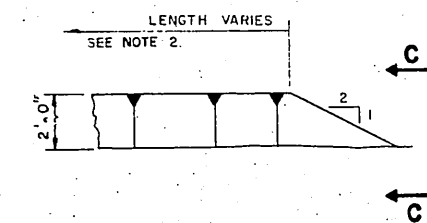
STATE	PROJECT DESIGNATION	YEAR	SHEET NO.
ALASKA	68732	1985	3



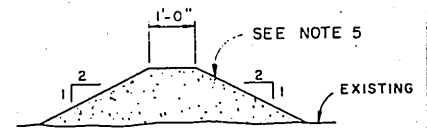
DETAIL D
TYPICAL EARTH BARRICADE
ON EXISTING ROADS
NO SCALE



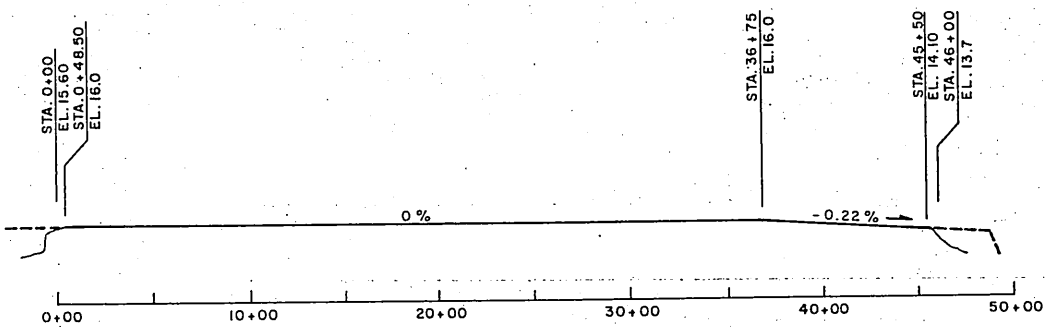
SECTION "A-A"
NO SCALE



DETAIL B
NO SCALE



VIEW C-C
NO SCALE

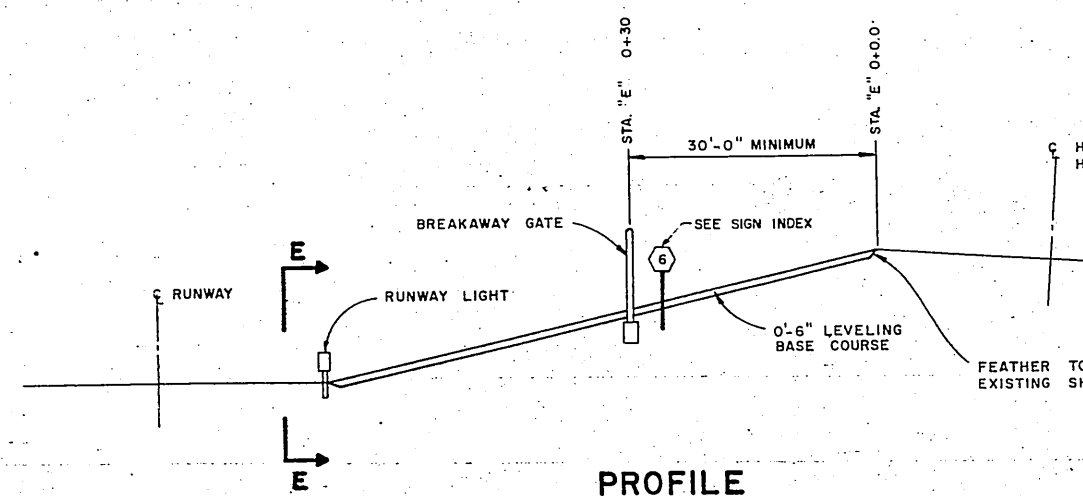


RUNWAY E PROFILE
SCALE
HORIZ. 1" = 500'
VERT. 1" = 20'

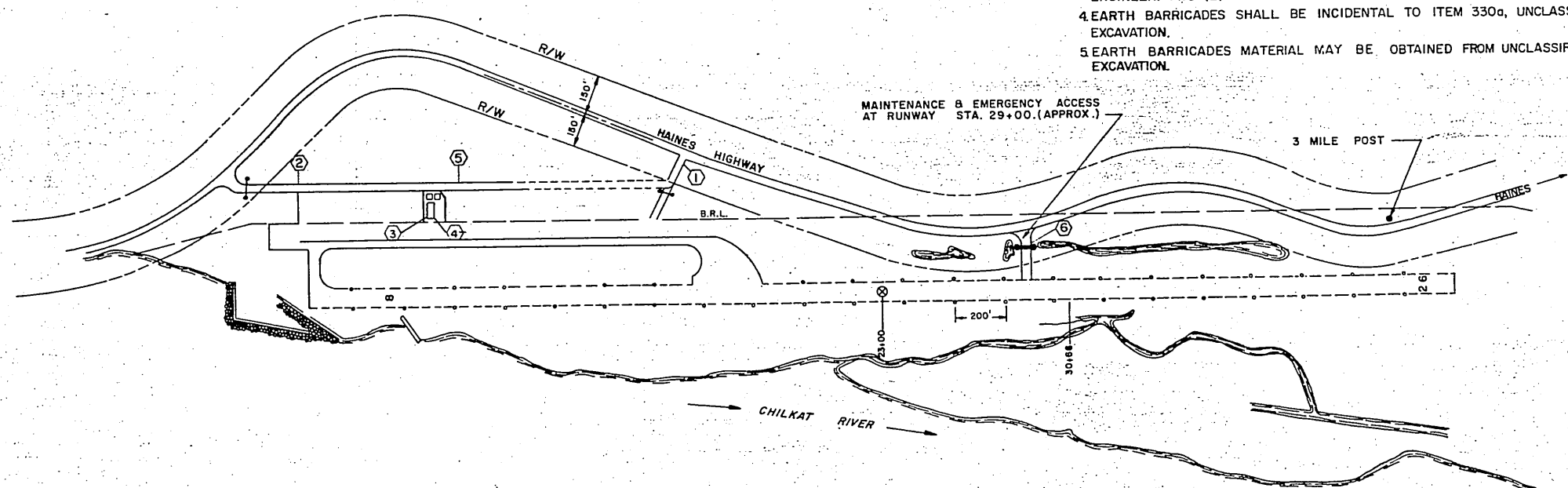
- SIGN INDEX**
- ① STOP
 - ② DEAD END
 - ③ NO VEHICLES BEYOND THIS POINT
 - ④ NO TRANSIENT PARKING LOADING ZONE ONLY
 - ⑤ TERMINAL BUILDING PUBLIC PARKING
 - ⑥ EMERGENCY ACCESS ONLY
- NOTE:**
SEE SIGN SCHEDULE ON SHEET 5

GENERAL NOTES:

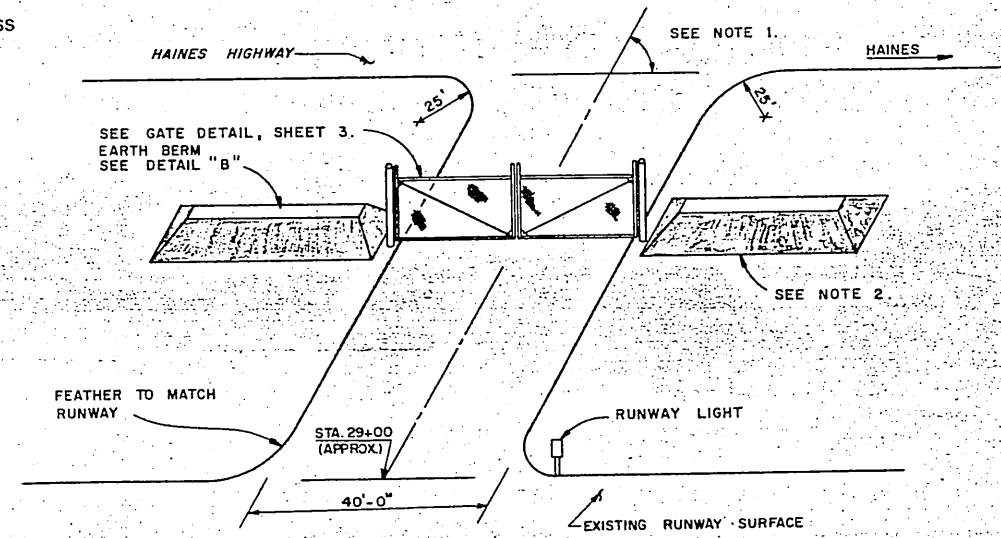
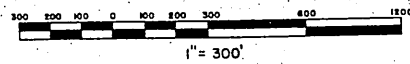
1. C. OF MAINTENANCE ACCESS SHALL BE SKEWED THE NECESSARY ANGLE TO AVOID HITTING ANY RUNWAY LIGHTS AS DIRECTED BY THE ENGINEER.
2. EARTHEN BERM SHALL BE EXTENDED SO AS TO PREVENT PUBLIC ACCESS AS DIRECTED BY THE ENGINEER.
3. EARTH BARRICADES TO BE PLACED AT LOCATIONS DESIGNATION BY THE ENGINEER. TWO (2) BARRICADES WILL BE REQUIRED.
4. EARTH BARRICADES SHALL BE INCIDENTAL TO ITEM 330a, UNCLASSIFIED EXCAVATION.
5. EARTH BARRICADES MATERIAL MAY BE OBTAINED FROM UNCLASSIFIED EXCAVATION.



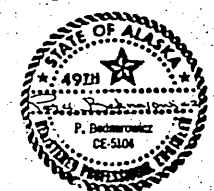
PROFILE
NO SCALE



HAINES AIRPORT PLAN



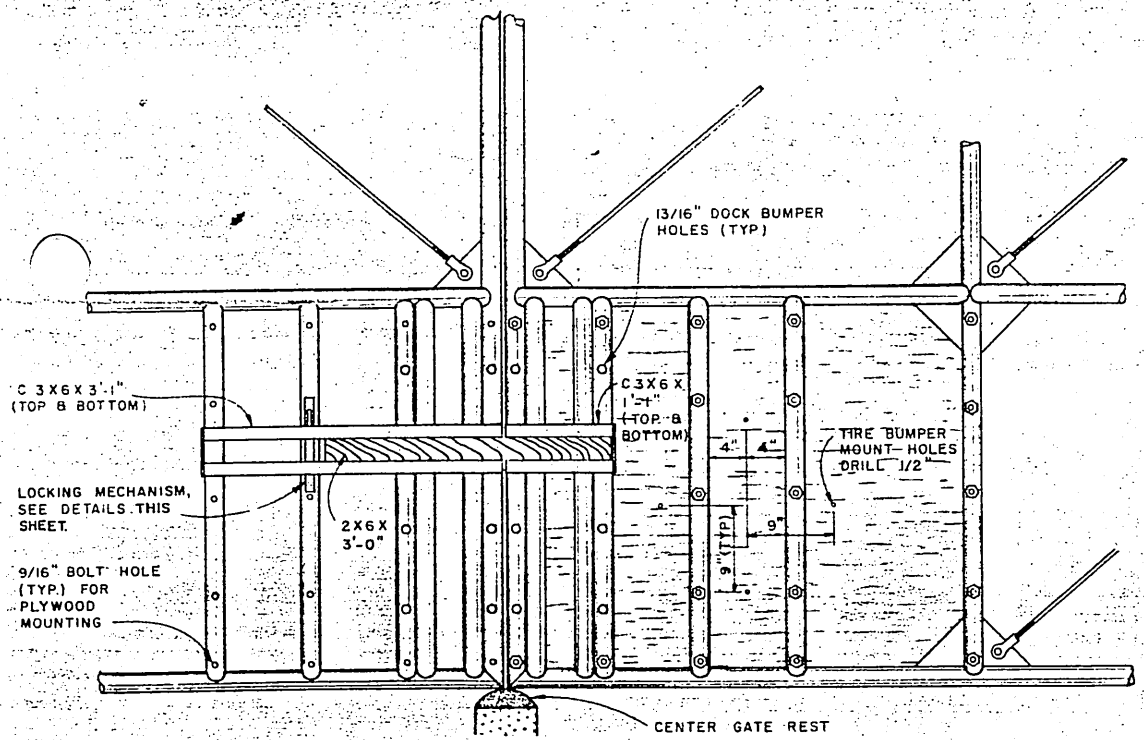
PLAN E-E



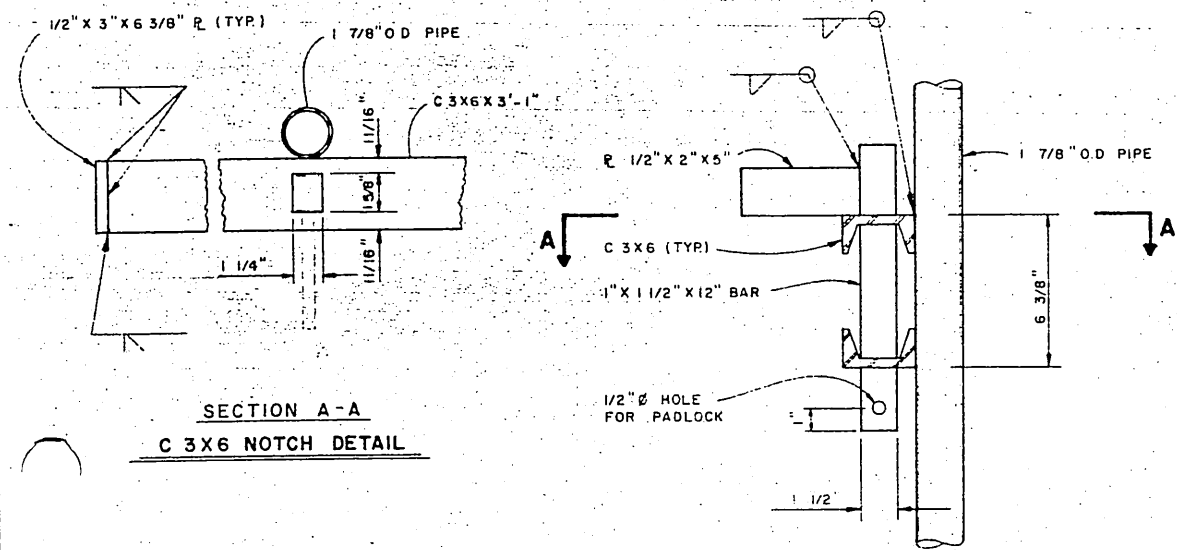
STATE OF ALASKA
DEPARTMENT OF TRANSPORTATION
AND PUBLIC FACILITIES
S.E. REGION, DIVISION OF AVIATION DESIGN & CONST.

HAINES AIRPORT ROAD
ADAP 6-02-0112-01
DETAILS

APPROVED BY:	<i>Wallace K. Williams</i> 8/13/85 WALLACE K. WILLIAMS Chief of Design							
APPROVED BY:	<i>Jamal Baumgartner</i> / for 8/12/85 WILLIAM L. BAUMGARTNER Design Chief Group							
BY	DATE	CHANGE	SCALE:	DESIGNED:	DRAWN:	CHECKED:	DATE:	SHEET
		REVISIONS	As shown	DTR				

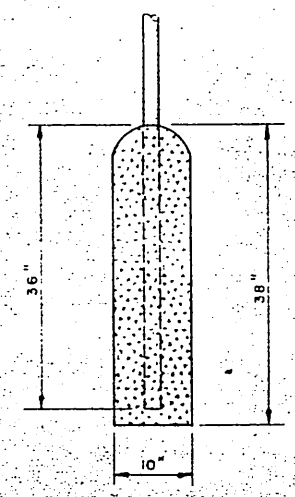


INSIDE VIEW OF LOWER CENTER GATE SECTIONS
(NTS)

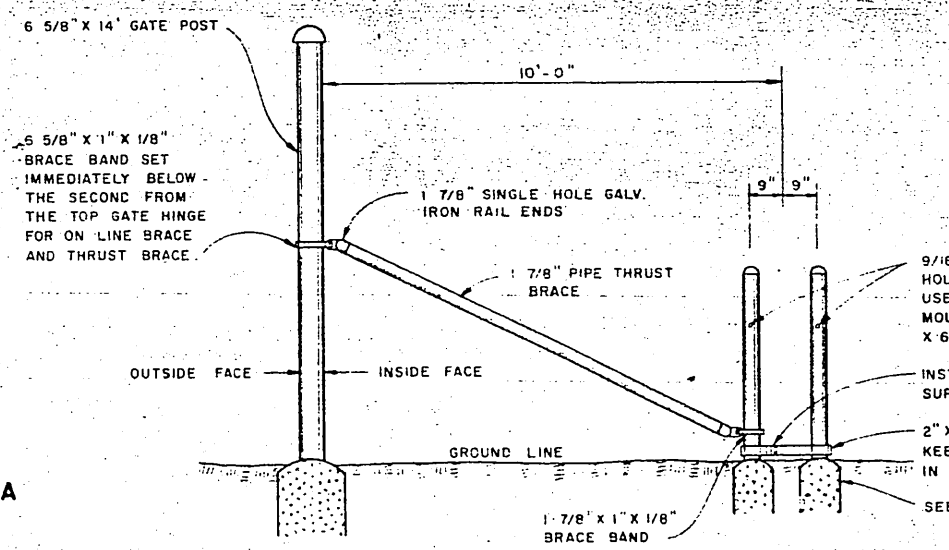


LOCKING MECHANISM DETAILS
(NTS)

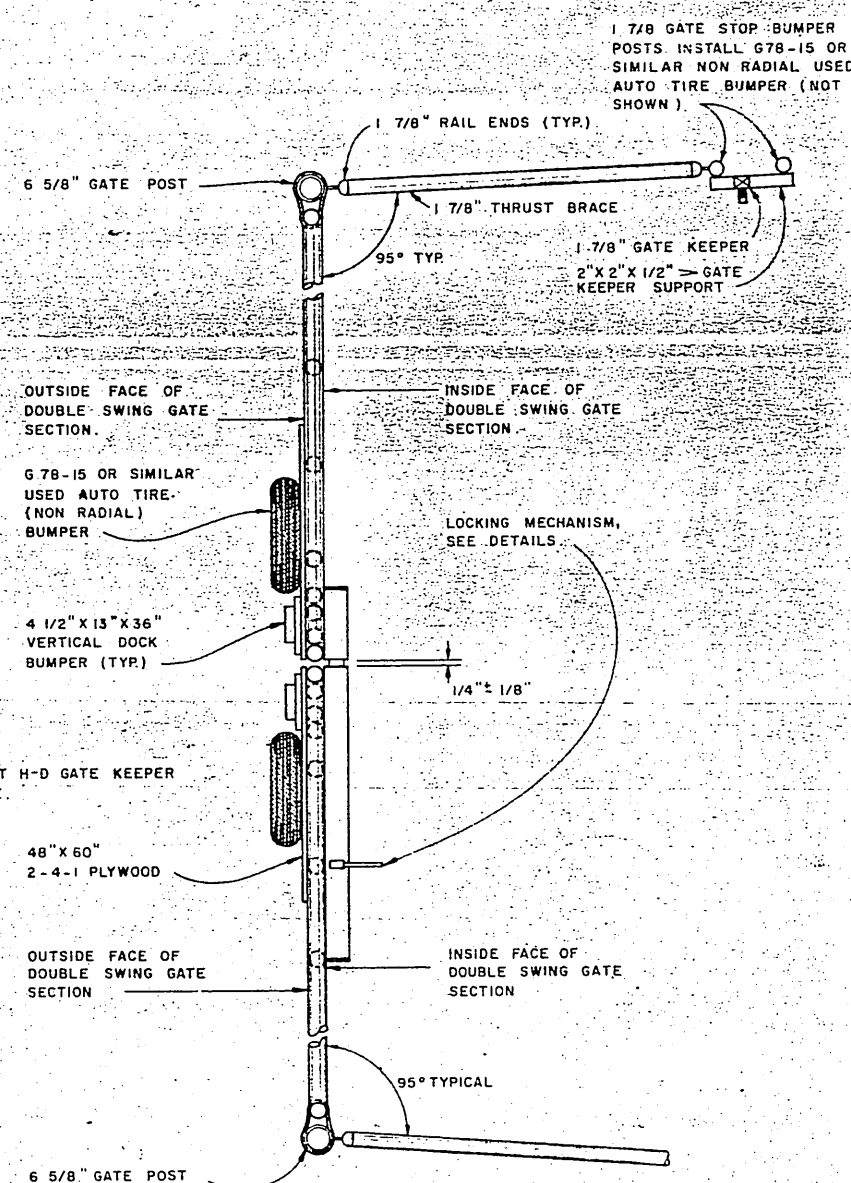
PROFILE
SIGNING NOTES
1. All lettering shall be 4" UPPER CASE.
2. All signs shall meet Class 1 specifications & standards.
3. Spacing, requirements between rows, borders & letters shall conform to the Alaska Sign Design Specifications Manual.



DETAIL "1"
(NTS)

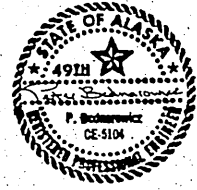


ON LINE VIEW OF GATE POST BRACING & GATE STOP BUMPER
ALL GATE DETAILS OPPOSITE HAND IDENTICAL ON DOUBLE SWING GATE INSTALLATION
(NTS)



PLAN VIEW
(NTS)

SIGNING SCHEDULE										
NO.	STATION	OFFSET	CODE NO.	LEGEND	SIZE (in X in)	Un-framed	AREA S.F.	NO. OF POSTS	FACING TRAFFIC	REMARKS
1	5+57.25	✓	R1-1	STOP	30 X 30	.050	6.25	1	S.B.	
2	3+00	✓	W14-1	DEAD END	24 X 24	.060	4.00	1	N.B.	
3	SEE PLAN		SPECIAL	NO VEHICLES BEYOND THIS POINT	31.5 X 37	.080	8.09	1	W.B.	LOCATE AS DIRECTED BY P.E. LEGEND BLACK, BACKGROUND WHITE
4	SEE PLAN		"	NO TRANSIENT PARKING LOADING ZONE ONLY	40 X 48.5	.080	12.08	2	E.B.	LOCATE AS DIRECTED BY P.E. LEGEND BLACK, BACKGROUND WHITE
5	6+75	✓	"	TERMINAL BUILDING PUBLIC PARKING	34.0 X 30.5	.080	7.20	2	N.B.	LEGEND WHITE BACKGROUND BLUE
6	11E+07.25	✓	"	EMERGENCY ACCESS ONLY	40.5 X 24	.080	6.75	2	W.B.	LEGEND BLACK BACKGROUND WHITE
					TOTAL = 44.37					



STATE OF ALASKA
DEPARTMENT OF TRANSPORTATION
AND PUBLIC FACILITIES
S.E. REGION, DIVISION OF AVIATION DESIGN & CONSTRUCTION

HAINES AIRPORT ROAD
ADAP 6-02-0112-01
DRIVE THROUGH GATE

APPROVED BY: *William K. Williams* 8/13/85
WALLACE K. WILLIAMS, CHIEF OF DESIGN

APPROVED BY: *William L. Baugartner* 8/13/85
WILLIAM L. BAUGARTNER, DESIGN CHIEF GROUP "B"

SCALE: As shown
DESIGNED: DTR
CHECKED: DATE: SHEET 5 OF 5