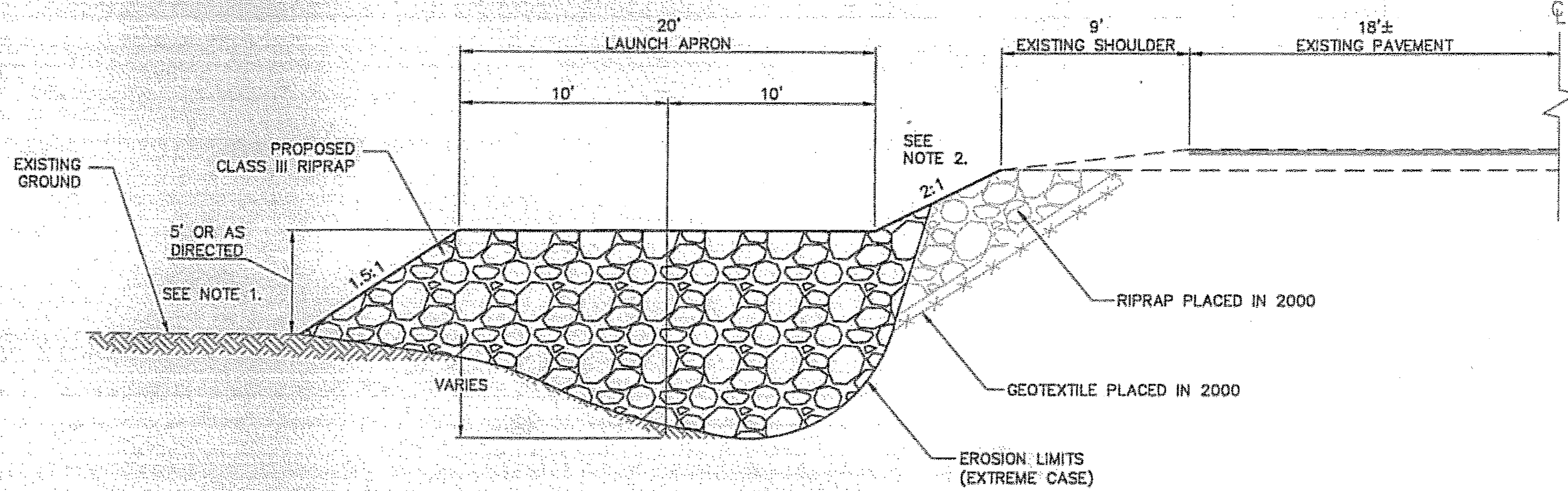


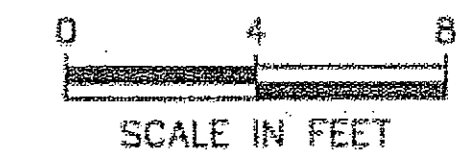
PLAN
DIVERSION DIKE TREATMENT



SECTION
CONCEPTUAL TYPICAL REINFORCEMENT SECTION
MODIFIED AT DIVERSION DIKES
SEE PLAN VIEW THIS SHEET

NOTES:

1. THE TOE OF PROPOSED RIPRAP GENERALLY LINES UP WITH THE OUTER MOST TOE OF THE EXISTING DIVERSION DIKES.
2. RECONSTRUCT EXISTING SLOPE AT 2:1.
3. SURVEY THE EXISTING GROUND AT 100 FOOT INTERVALS FOR THE LENGTH OF THE PROJECT PER SECTION 642. THE NEAT LINE VOLUME OF RIPRAP WILL THEN BE COMPUTED BY THE ENGINEER.



ESTIMATE OF QUANTITIES

ITEM NO.	PAY ITEM	PAY UNIT	QUANTITY
203 (19)	ROOT WAD	EACH	45 16
611 (1)	RIPRAP, CLASS III	CUBIC YARD	56000 53183
611 (2)	FILLER MATERIAL	CYVM	6000 5270
640 (1)	MOBILIZATION AND DEMOBILIZATION	LUMP SUM	ALL REQUIRED
640 (4)	WORKER MEALS AND LODGING, OR PER DIEM	LUMP SUM	ALL REQUIRED
641 (1)	EROSION AND POLLUTION CONTROL ADMINISTRATION	LUMP SUM	ALL REQUIRED
642 (1)	CONSTRUCTION SURVEYING	LUMP SUM	ALL REQUIRED
643 (2)	TRAFFIC MAINTENANCE	LUMP SUM	ALL REQUIRED
643 (3)	PERMANENT CONSTRUCTION SIGNS	LUMP SUM	ALL REQUIRED
643 (15)	FLAGGING	CONTINGENT SUM	ALL REQUIRED
643 (25)	TRAFFIC CONTROL	CONTINGENT SUM	ALL REQUIRED
644 (6)	VEHICLES	LUMP SUM	ALL REQUIRED

As Built
10/25/06

DO NOT SCALE FROM THESE DRAWINGS USE DIMENSIONS

CHECKED BY: T. MOORE

STATE OF ALASKA
DEPARTMENT OF TRANSPORTATION & PUBLIC FACILITIES
S.E. REGION DESIGN & ENGINEERING SERVICES DIVISION

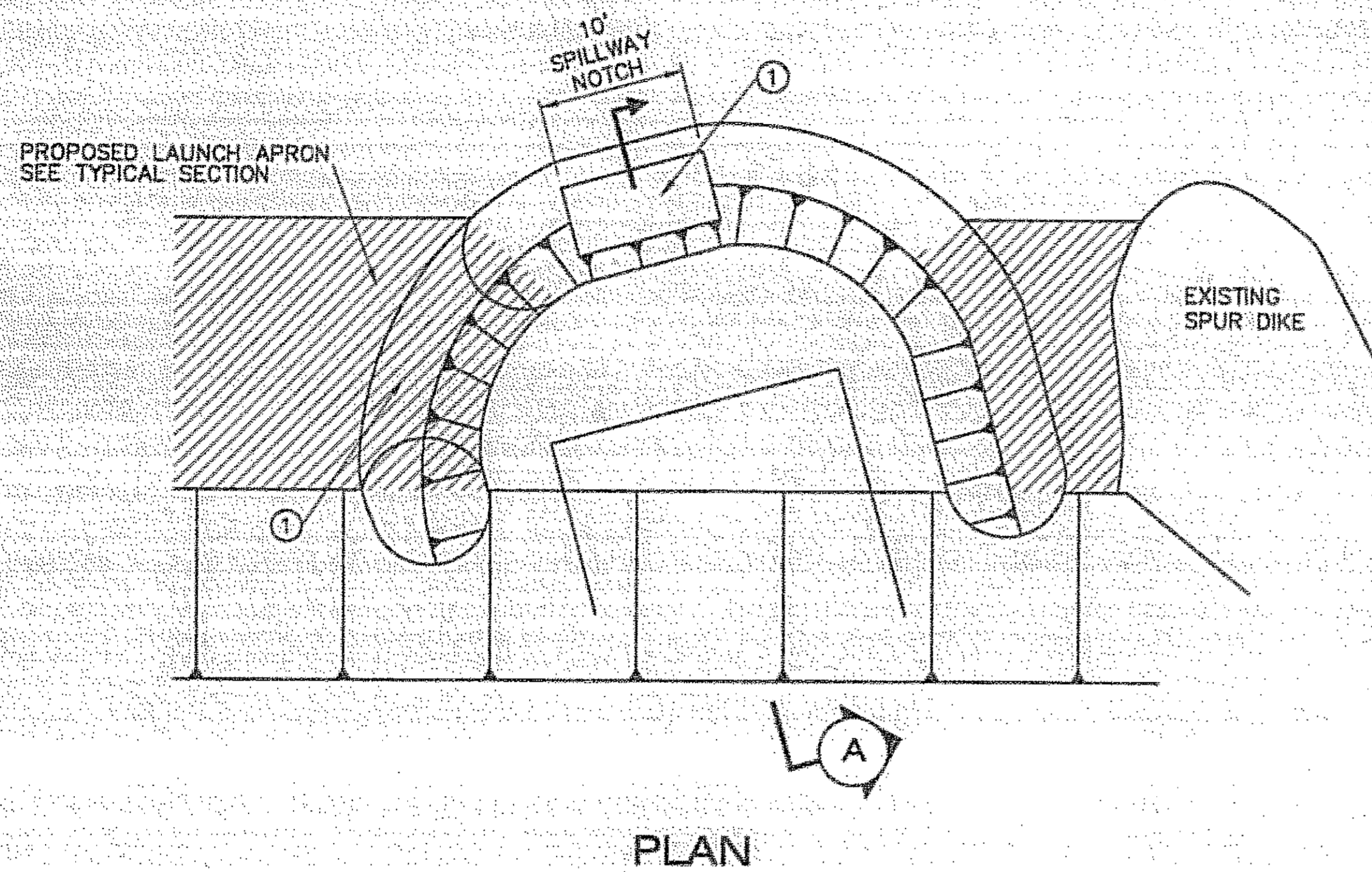
HAINES HIGHWAY REVETMENT REINFORCEMENT PROJECT #68369

TYPICAL SECTIONS & ESTIMATE OF QUANTITIES

DESIGNED BY: R. KRAEMER
DRAWN BY: R. SNYDER

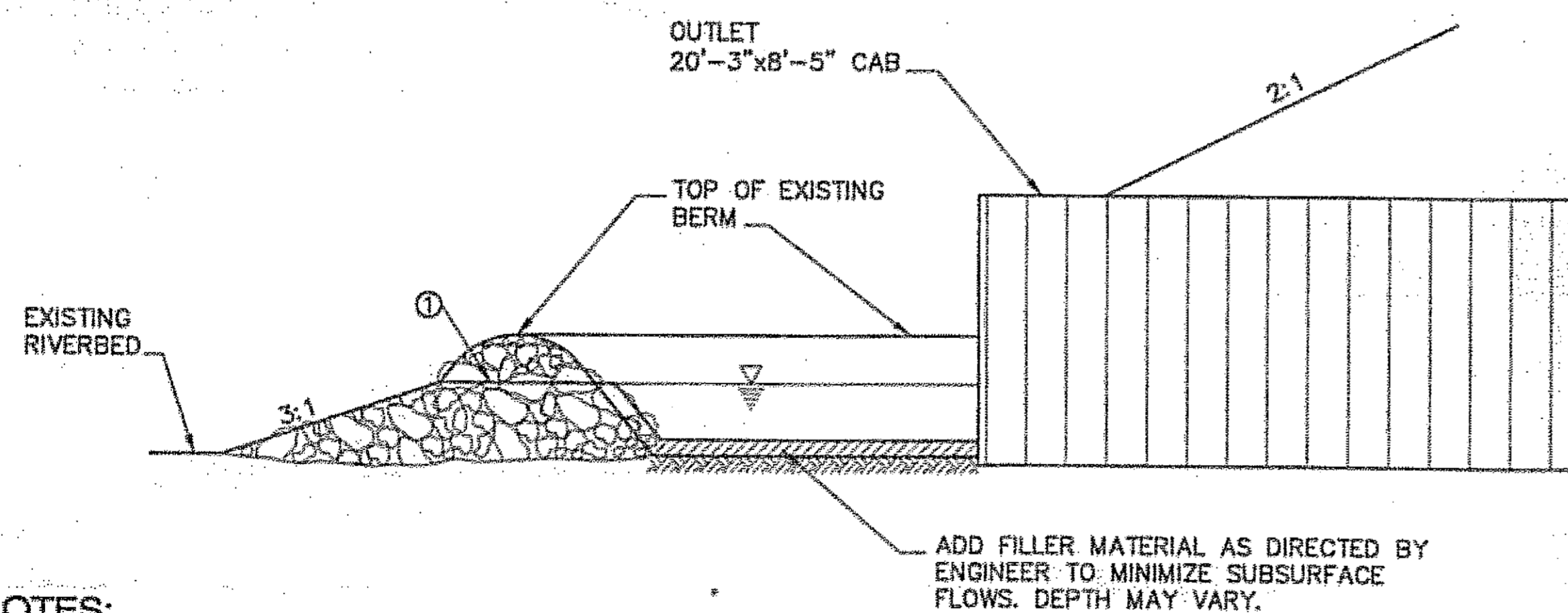
PATH: Q:\hns\68369\Plans\B_Typ.dwg
TAB: B1 Mon, 01/Aug/05 10:02AM rpkraemer

REVISIONS			PROJECT DESIGNATION	YEAR	SHEET NO.	TOTAL SHEETS
NO.	DATE	DESCRIPTION				
			NH-095-6(26)	2005	B1	8



ESCP NOTES:

1. EXCAVATION WORK BELOW 37-MILE CREEK WILL BE DONE IN THE DRY TO THE EXTENT PRACTICABLE. THE WORK MUST BE DONE DURING LOW FLOW CONDITIONS AND MAY INCLUDE DIVERTING 37-MILE CREEK AROUND THE EXCAVATION SITE IF FLOW CONDITIONS WARRANT.
2. THE POND ADJACENT TO 37-MILE CREEK CULVERT OUTLET WILL REMAIN ESSENTIALLY INTACT.
3. REFER TO APPENDIX B OF THE SPECIAL PROVISIONS FOR ADDITIONAL ENVIRONMENTAL COMMITMENTS.



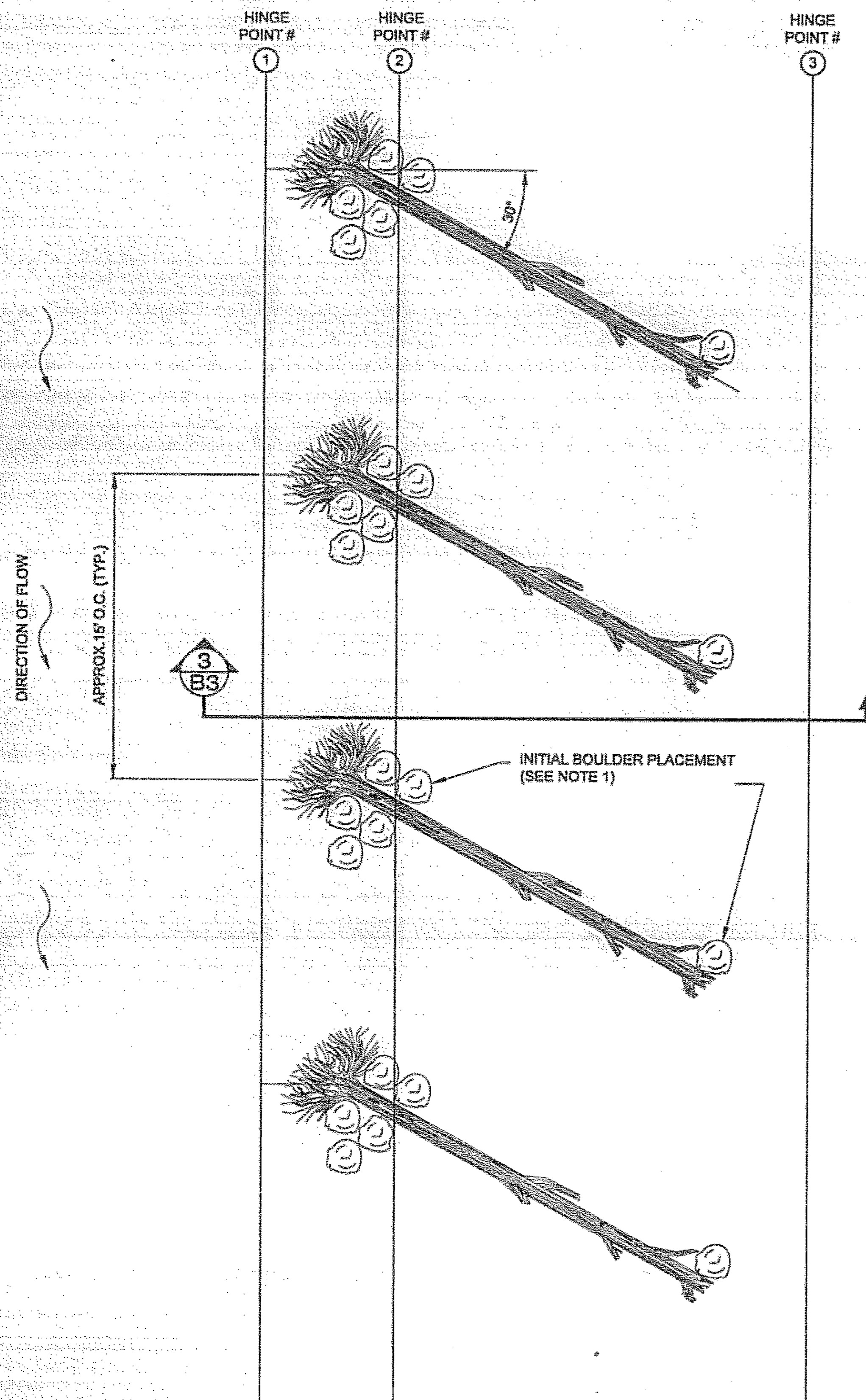
NOTES:

- ① RELOCATE SPILLWAY NOTCH TO A LOCATION IN-LINE WITH CULVERT ALIGNMENT. SET ELEVATION OF NOTCH TO PROVIDE A 2.5' BACKWATER ABOVE THE CULVERT OUTLET INVERT ELEVATION. SEE SECTION 611-4.01.

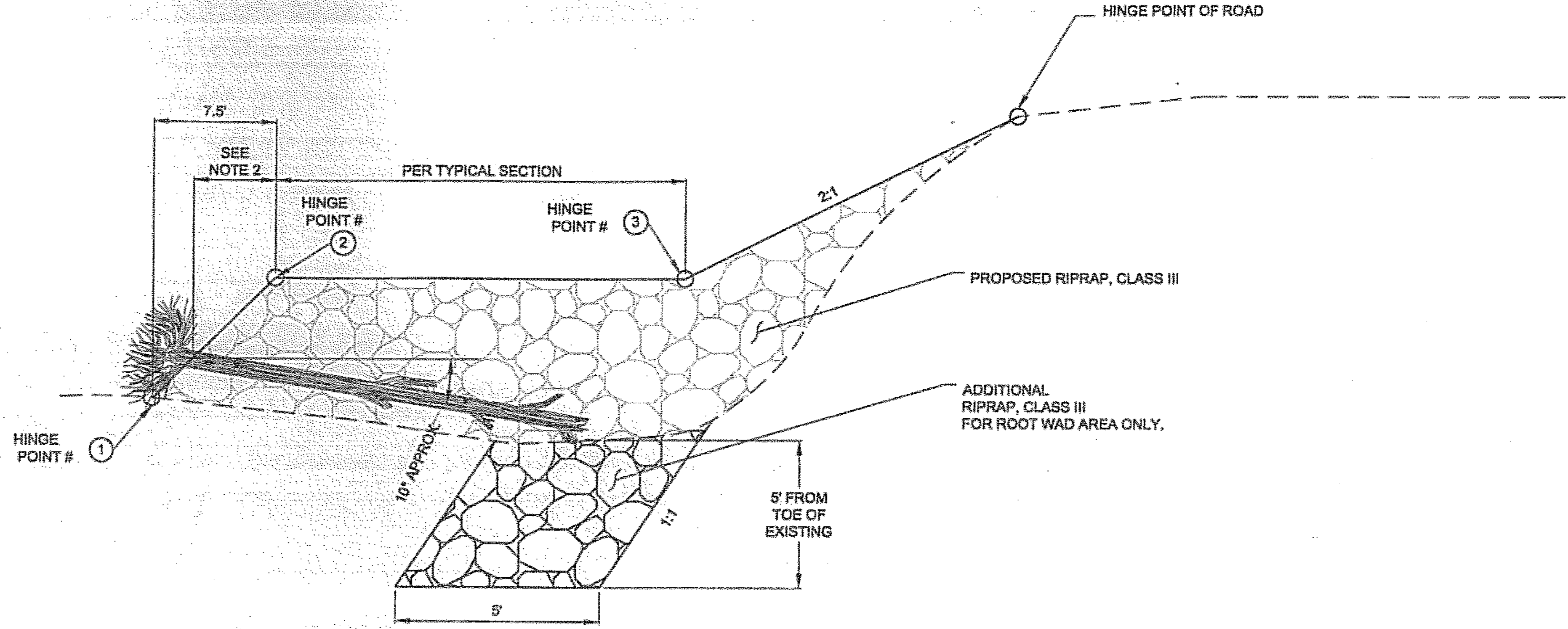
As Built
10/25/06

DO NOT SCALE FROM THESE DRAWINGS USE DIMENSIONS

CHECKED BY: T. MOORE		STATE OF ALASKA DEPARTMENT OF TRANSPORTATION & PUBLIC FACILITIES S.E. REGION DESIGN & ENGINEERING SERVICES DIVISION										
		HAINES HIGHWAY REVETMENT REINFORCEMENT PROJECT #68369										
		37-MILE CULVERT OUTLET DETAIL										
DESIGNED BY: R. KRAEMER		PROJECT DESIGNATION	YEAR									
DRAWN BY: R. SNYDER		NH-095-6(26)	2005									
PATH: G:\Hns\68369\Plans\B_Typ.dwg TAB: B2 Mon, 01/aug/05 09:41AM rpkraemer		SHEET NO.	TOTAL SHEETS									
<table border="1"> <thead> <tr> <th colspan="3">REVISIONS</th> </tr> <tr> <th>NO.</th> <th>DATE</th> <th>DESCRIPTION</th> </tr> </thead> <tbody> <tr> <td> </td> <td> </td> <td> </td> </tr> </tbody> </table>		REVISIONS			NO.	DATE	DESCRIPTION				B2	8
REVISIONS												
NO.	DATE	DESCRIPTION										

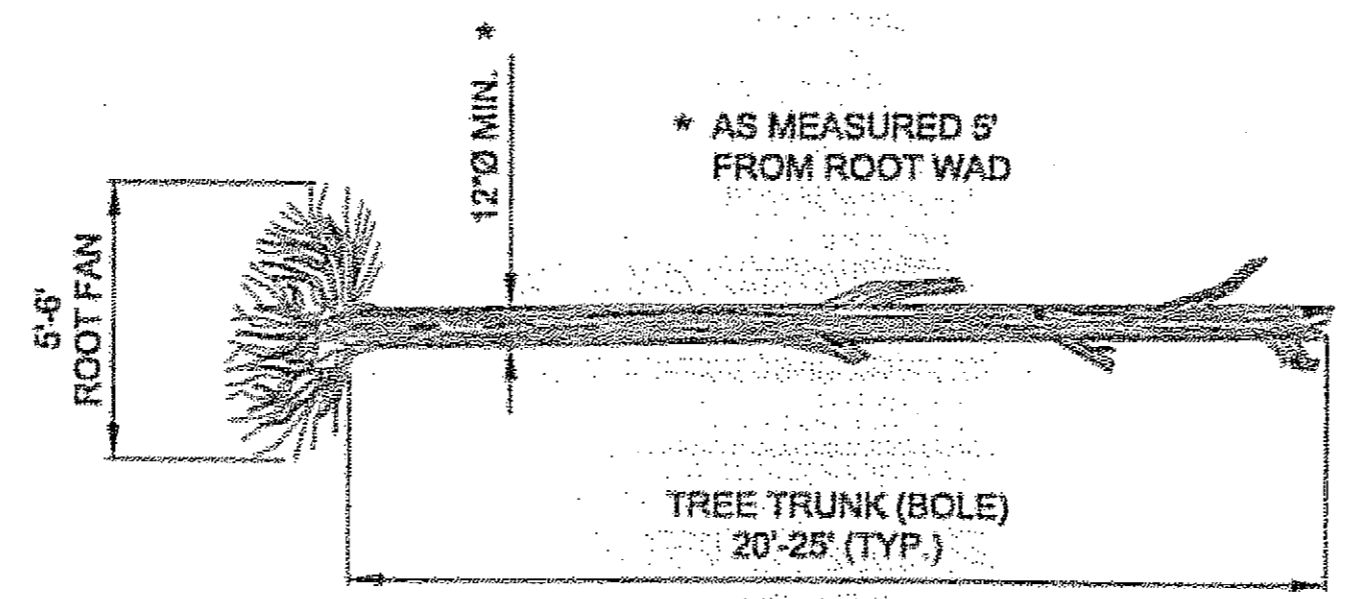


1 LAYOUT PLAN
B3



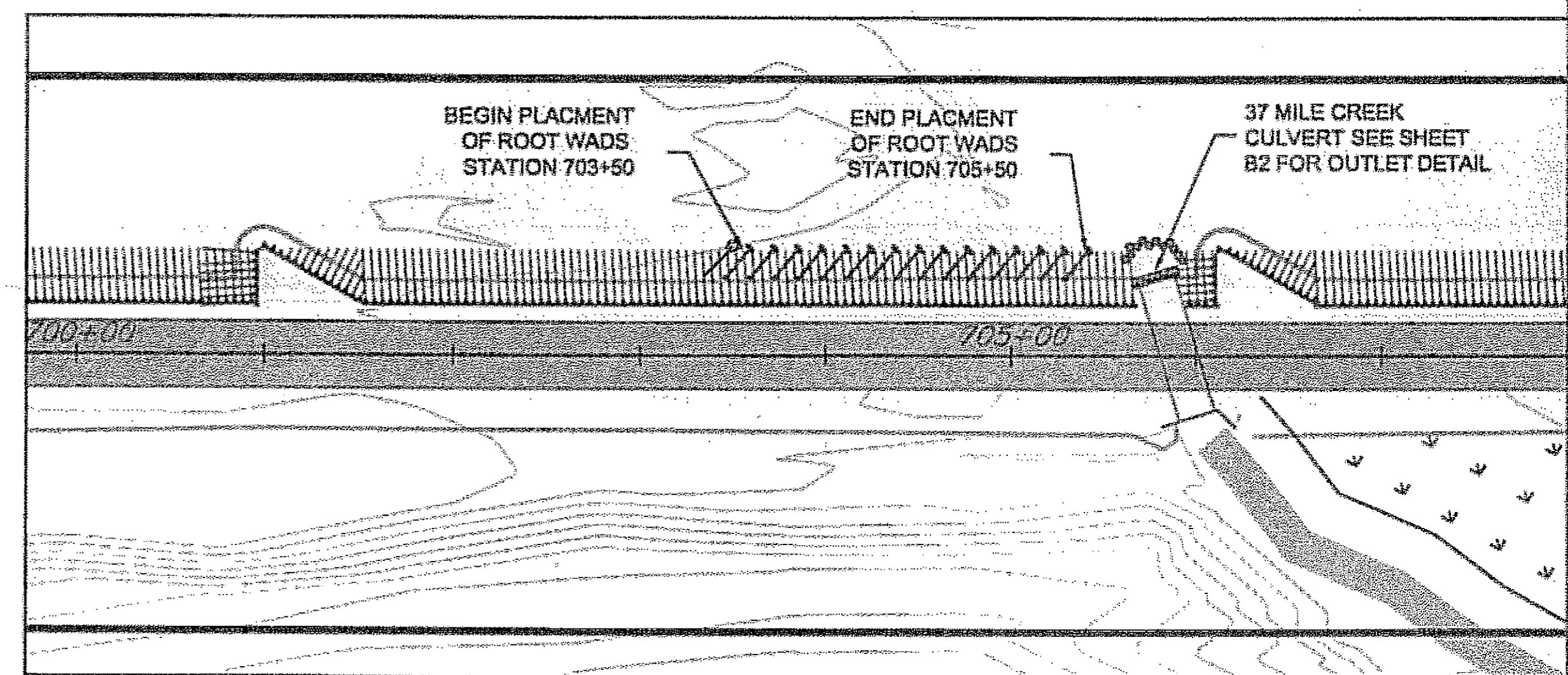
3 SECTION
B3

- NOTES:**
1. PLACE LARGER SIZE CLASS III BOULDERS TO HOLD TREE TRUNK INSIDE THE REVETMENT.
 2. PLACE ROOT WAD AS CLOSE TO TOE OF RIPRAP AS IS PRACTICAL.



2 ROOT WAD DETAIL
B3

As Built
10/25/06
0



4 LOCATION
B3

DO NOT SCALE FROM THESE DRAWINGS USE DIMENSIONS

CHECKED BY: T. MOORE

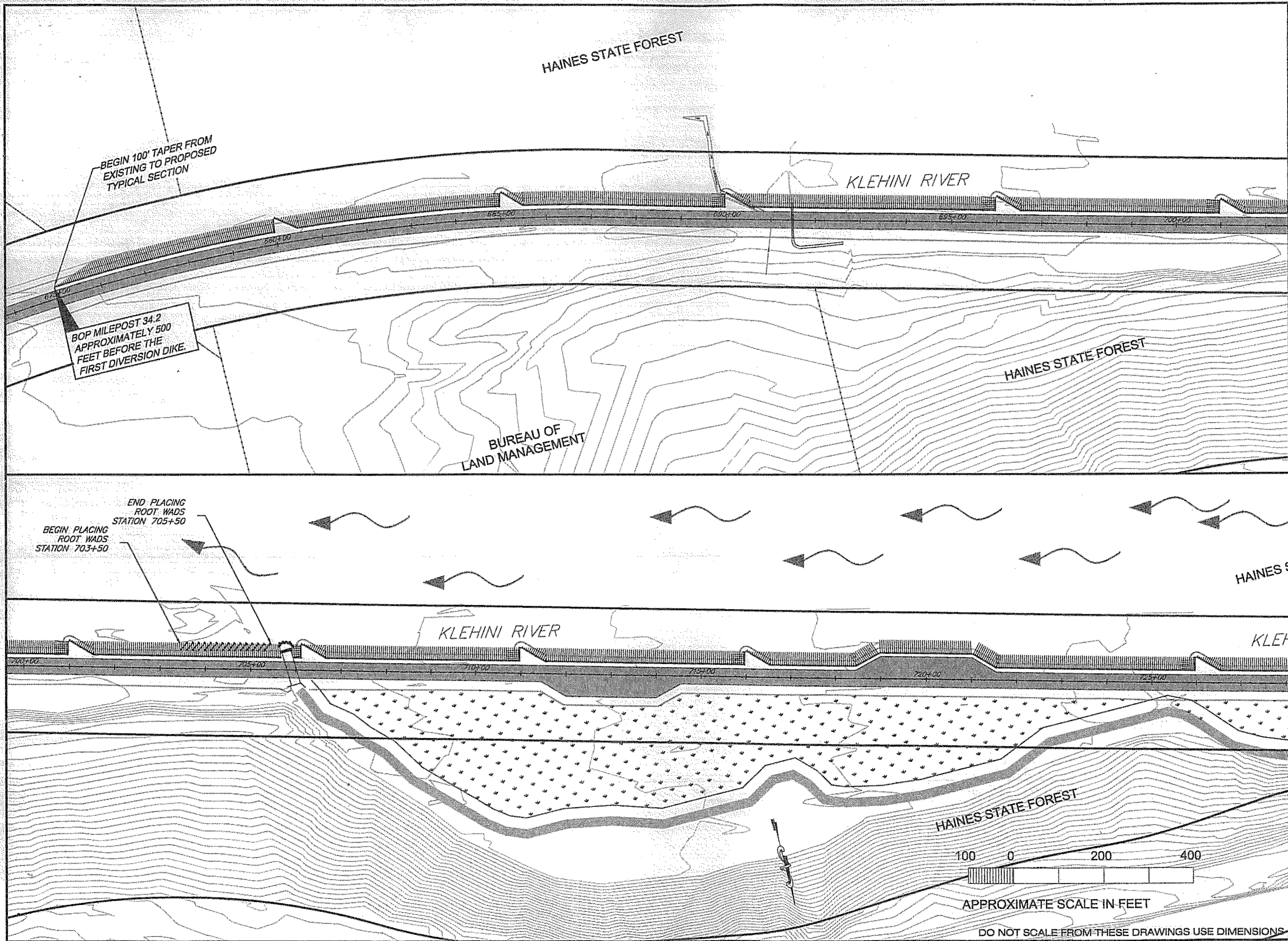
DESIGNED BY: R. KRAEMER
DRAWN BY: R. SNYDER

STATE OF ALASKA
DEPARTMENT OF TRANSPORTATION & PUBLIC FACILITIES
S.E. REGION DESIGN & ENGINEERING SERVICES DIVISION
**HAINES HIGHWAY
REVETMENT REINFORCEMENT
PROJECT #68369**

ROOT WAD DETAILS

PATH: G:\hns\68369\PlanSet\F--Plan.dwg
TAB: B3 Thu, 14/Jul/05 04:04PM drdodge

REVISIONS			PROJECT DESIGNATION	YEAR	SHEET NO.	TOTAL SHEETS
NO.	DATE	DESCRIPTION				
			NH-095-6(26)	2005	B3	8



PATH: C:\hns\68369\PlanSet\F-Plan.dwg
 Thu, 14/Jul/05 01:57PM drdodge
 TAB: F1

ADDENDUM NUMBER		
ATTACHMENT NUMBER		
RECORD OF REVISIONS		
No.	DATE	DESCRIPTION

As Built
 10/25/06
 ~

PLAN LEGEND

CHECKED BY: R. KRAEMER

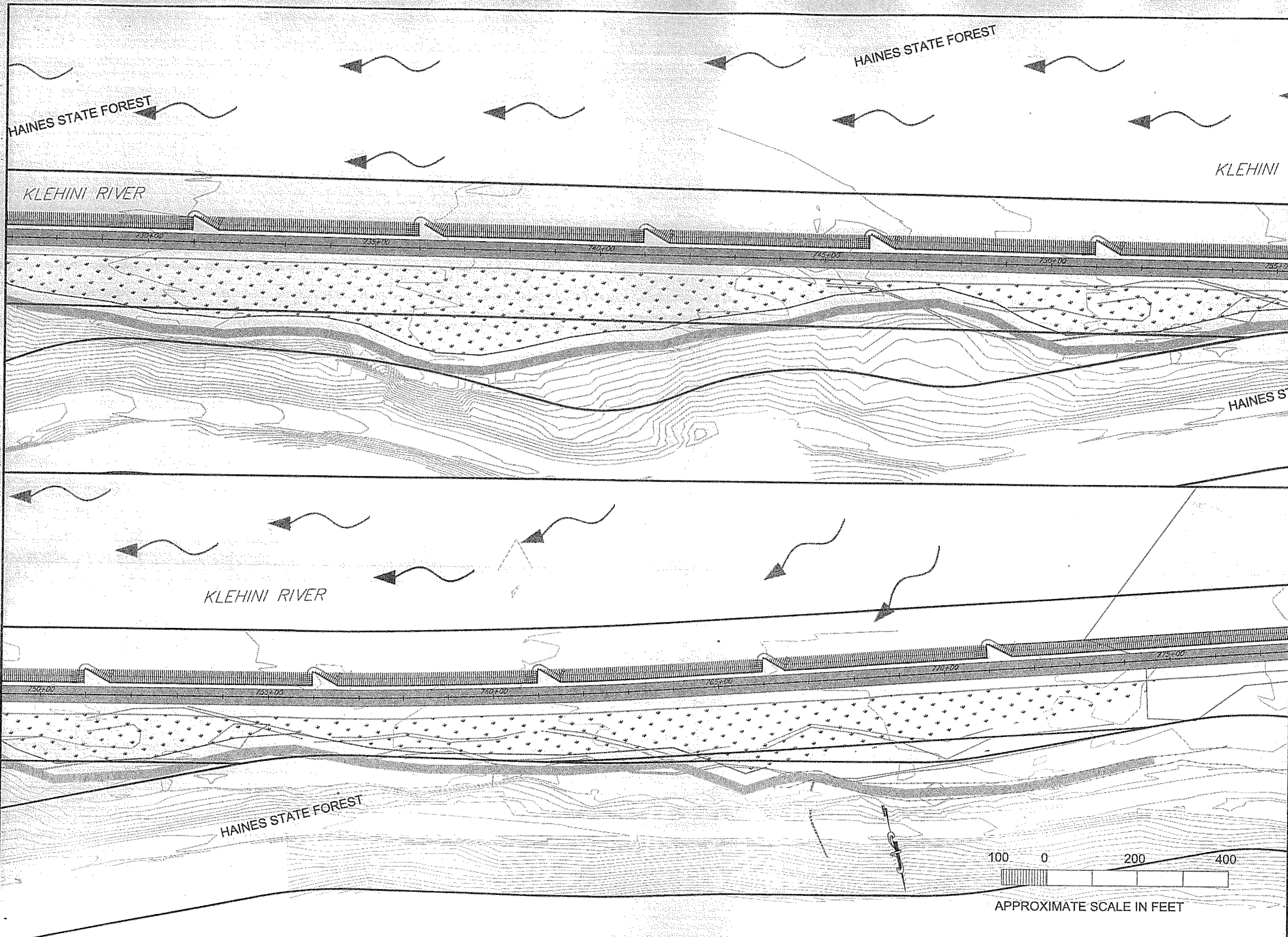
DESIGNED BY: R. KRAEMER
 DRAWN BY: B. BENNETT

STATE OF ALASKA
 DEPARTMENT OF TRANSPORTATION & PUBLIC FACILITIES
 S.E. REGION DESIGN & ENGINEERING SERVICES DIVISION
HNS-HAINES HIGHWAY REVETMENT REINFORCEMENT PROJECT #68369

SHEET DESCRIPTION

PROJECT DESIGNATION	
NH-095-6(26)	
STATE	YEAR
ALASKA	2005
SHEET NUMBER	TOTAL SHEETS
F1	8

DO NOT SCALE FROM THESE DRAWINGS USE DIMENSIONS



PATH:
Q:\hns\68369\PlanSet\F-Plan.dwg
Thu, 14/Jul/05 03:48PM drdodge
TAB: F2

ADDENDUM NUMBER		
ATTACHMENT NUMBER		
RECORD OF REVISIONS		
No.	DATE	DESCRIPTION

As Built
10/25/06
60

PLAN LEGEND

CHECKED BY: R. KRAEMER

8/1/05

DESIGNED BY: R. KRAEMER
DRAWN BY: B. BENNETT

STATE OF ALASKA
DEPARTMENT OF TRANSPORTATION
& PUBLIC FACILITIES
S.E. REGION DESIGN & ENGINEERING
SERVICES DIVISION

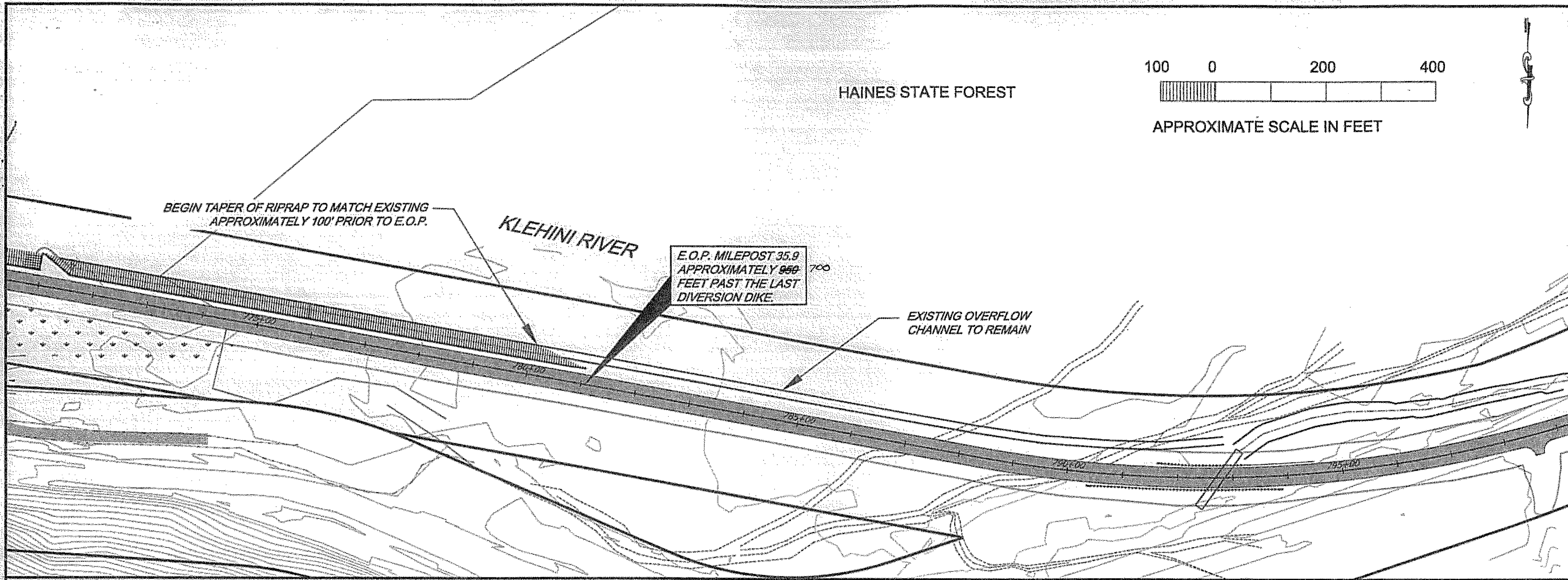
**HNS-HAINES HIGHWAY
REVIETMENT REINFORCEMENT
PROJECT #68369**

SHEET DESCRIPTION

PROJECT DESIGNATION
NH-095-6(26)

STATE	YEAR
ALASKA	2005
SHEET NUMBER	TOTAL SHEETS
F2	8

DO NOT SCALE FROM THESE DRAWINGS USE DIMENSIONS

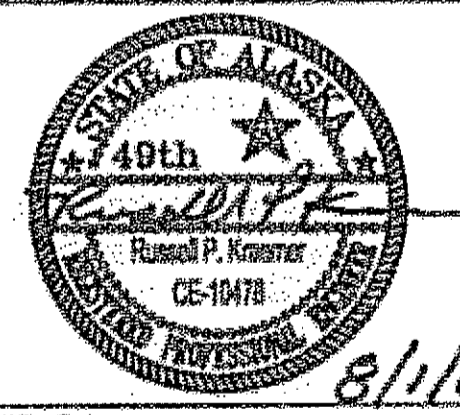


PATH: Q:\Hna\68369\Planset\F-Plan.dwg
 Thu, 14/Jul/05 02:06PM drdodge
 TAB: F3

ADDENDUM NUMBER		
ATTACHMENT NUMBER		
RECORD OF REVISIONS		
No.	DATE	DESCRIPTION

PLAN LEGEND

CHECKED BY: R. KRAEMER



DESIGNED BY: R. KRAEMER

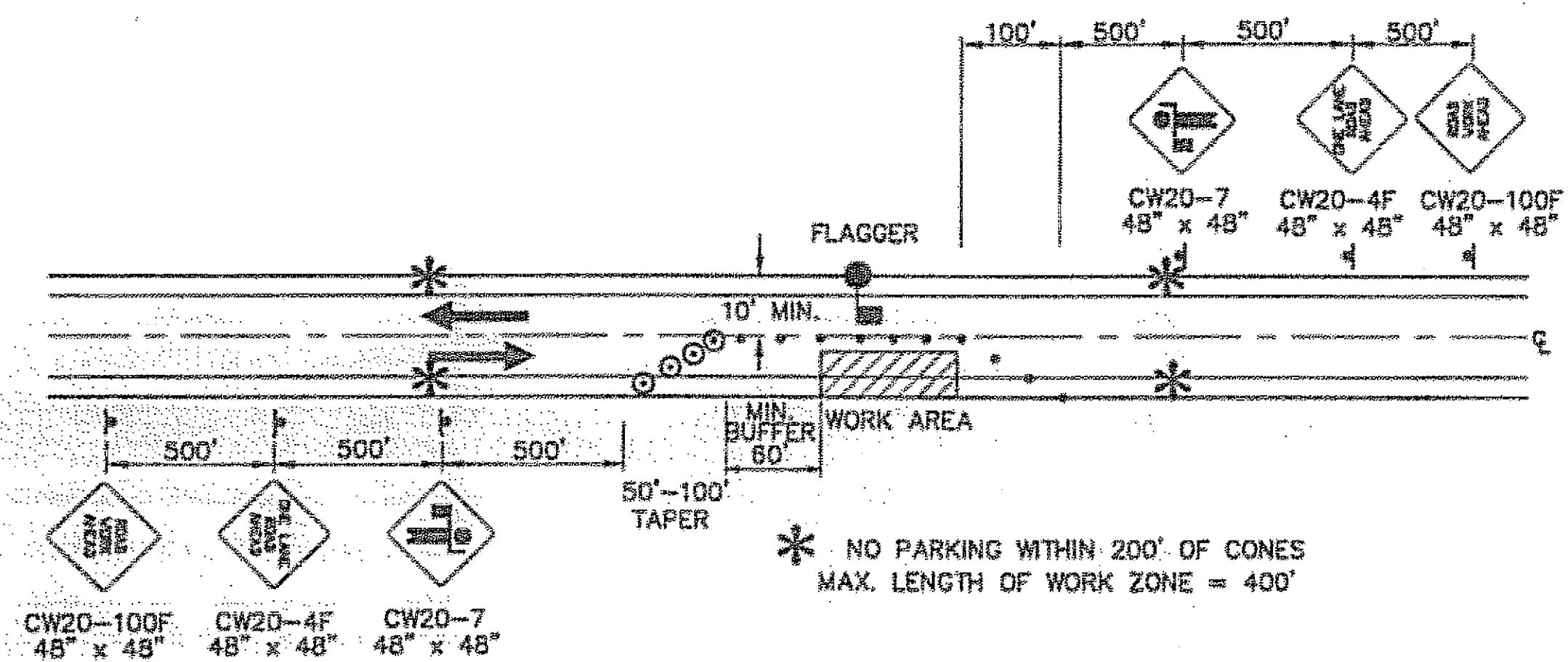
DRAWN BY: B. BENNETT

STATE OF ALASKA
 DEPARTMENT OF TRANSPORTATION
 & PUBLIC FACILITIES
 S.E. REGION DESIGN & ENGINEERING
 SERVICES DIVISION
**HNS-HAINES HIGHWAY
 REVETMENT REINFORCEMENT
 PROJECT #68369**

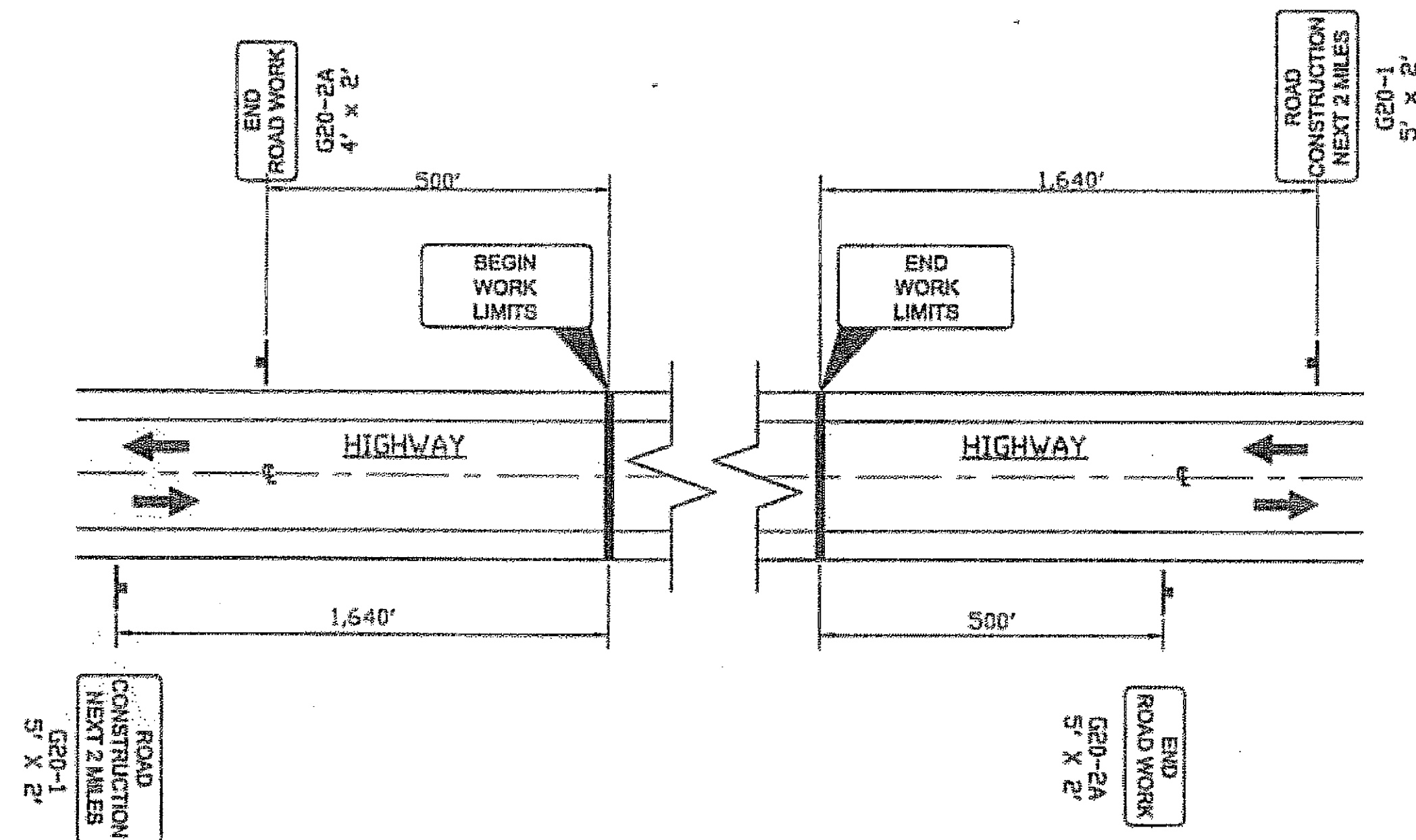
SHEET DESCRIPTION

PROJECT DESIGNATION	
NH-095-6(26)	
STATE	YEAR
ALASKA	2005
SHEET NUMBER	TOTAL SHEETS
F3	8

AS BUILT
 10/25/06
 S



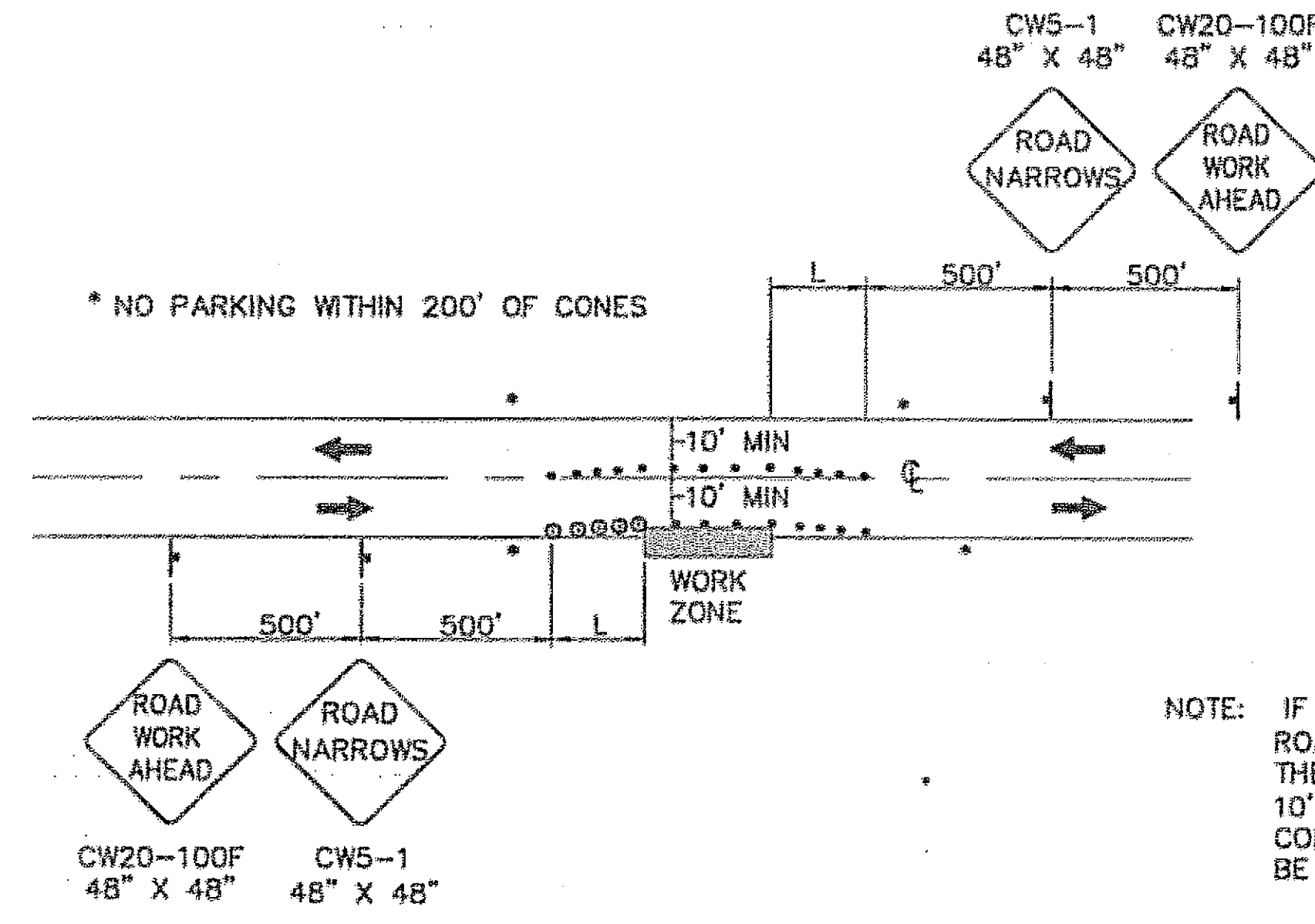
TWO LANE ROAD - SINGLE LANE CLOSURE
SINGLE FLAGGER



Permanent Construction Signing

TRAFFIC CONTROL NOTES

1. IT IS THE INTENT OF THIS TRAFFIC CONTROL PLAN (TCP) TO ILLUSTRATE SOME BUT NOT ALL OF THE TRAFFIC CONTROL CONFIGURATIONS THAT WILL BE REQUIRED BY THIS PROJECT. TRAFFIC CONTROL PLANS FOR CONFIGURATIONS NOT COVERED BY THIS TCP SHALL BE DEVELOPED BY THE CONTRACTOR AND SUBMITTED TO THE ENGINEER FOR APPROVAL PRIOR TO USE.
2. A MINIMUM OF ONE LANE SHALL BE MAINTAINED AT ALL TIMES AT WORK AREAS.
3. TWO LANES SHALL BE MAINTAINED AT ALL TIMES WITHIN THE PROJECT LIMITS IN NON-WORK AREAS AND DURING NON-WORKING HOURS.
4. DRIVING LANES SHALL BE A MINIMUM WIDTH OF 10'.
5. INTERSECTION ROADWAYS SHALL REMAIN ACCESSIBLE AT ALL TIMES.
6. FLOOD LIGHTS SHALL BE PROVIDED FOR FLAGGER STATIONS DURING NIGHT OPERATIONS.
7. THE CONTRACTOR SHALL KEEP THE PUBLIC INFORMED OF HIS CONSTRUCTION ACTIVITIES THROUGH THE USE OF THE LOCAL NEWS MEDIA. NEWS RELEASES SHALL BE APPROVED BY THE PROJECT ENGINEER PRIOR TO THEIR RELEASE. NEWS RELEASES WILL BE REQUIRED BUT NOT LIMITED TO, THE ONSET OF WORK, AND CHANGES IN THE LANE CONFIGURATIONS.
8. INSTALL DOUBLE TRAFFIC FINE SIGNS PER STANDARD DRAWING C-04.12.



ROADWAY ENCROACHMENT

FORMULAS FOR L (TAPER LENGTH)

40 MPH OR LESS $L = \frac{W \times S^2}{60}$

45 MPH OR GREATER $L = W \times S$

WHERE W = WIDTH OF OFFSET
S = POSTED SPEED LIMIT

DRUM OR CONE SPACING = S (IN FEET)

MIN. BUFFER S	LENGTH
20	35
25	55
30	85
35	120
40	170
45	220
50	280
55	335
60	415
65	485

NOTE: IF ONLY ONE LANE IS EFFECTED BY ROAD WORK (THAT IS, THE CONES ALONG THE WORK AREA ARE NO CLOSER THAN 10' TO CENTERLINE) THE CENTERLINE CONES FOR THE OPPOSING LANE MAY BE DELETED.

LEGEND

- ◆ SIGN
- CONE
- ⊙ DRUM
- ▬ TYPE III BARRICADE
- ⊠ FLAGGING STATION

DO NOT SCALE FROM THESE DRAWINGS USE DIMENSIONS

CHECKED BY: R. KRAEMER

DESIGNED BY: R. KRAEMER
DRAWN BY: DR DODGE

STATE OF ALASKA
DEPARTMENT OF TRANSPORTATION & PUBLIC FACILITIES
S.E. REGION DESIGN & ENGINEERING SERVICES DIVISION
**HAINES HIGHWAY
REVETMENT REINFORCEMENT
PROJECT #68369**

TRAFFIC CONTROL PLAN

DESIGNED BY: R. KRAEMER
DRAWN BY: DR DODGE
8/1/05

PATH: Q:\Hns\68369\Plans\T_TCP.DWG
TAB: T1 Thu, 21/Jul/05 11:40AM drdodge

REVISIONS			PROJECT DESIGNATION	YEAR	SHEET NO.	TOTAL SHEETS
NO.	DATE	DESCRIPTION				
			NH-095-6(26)	2005	T1	8

As Built 10/25/06