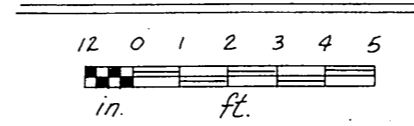
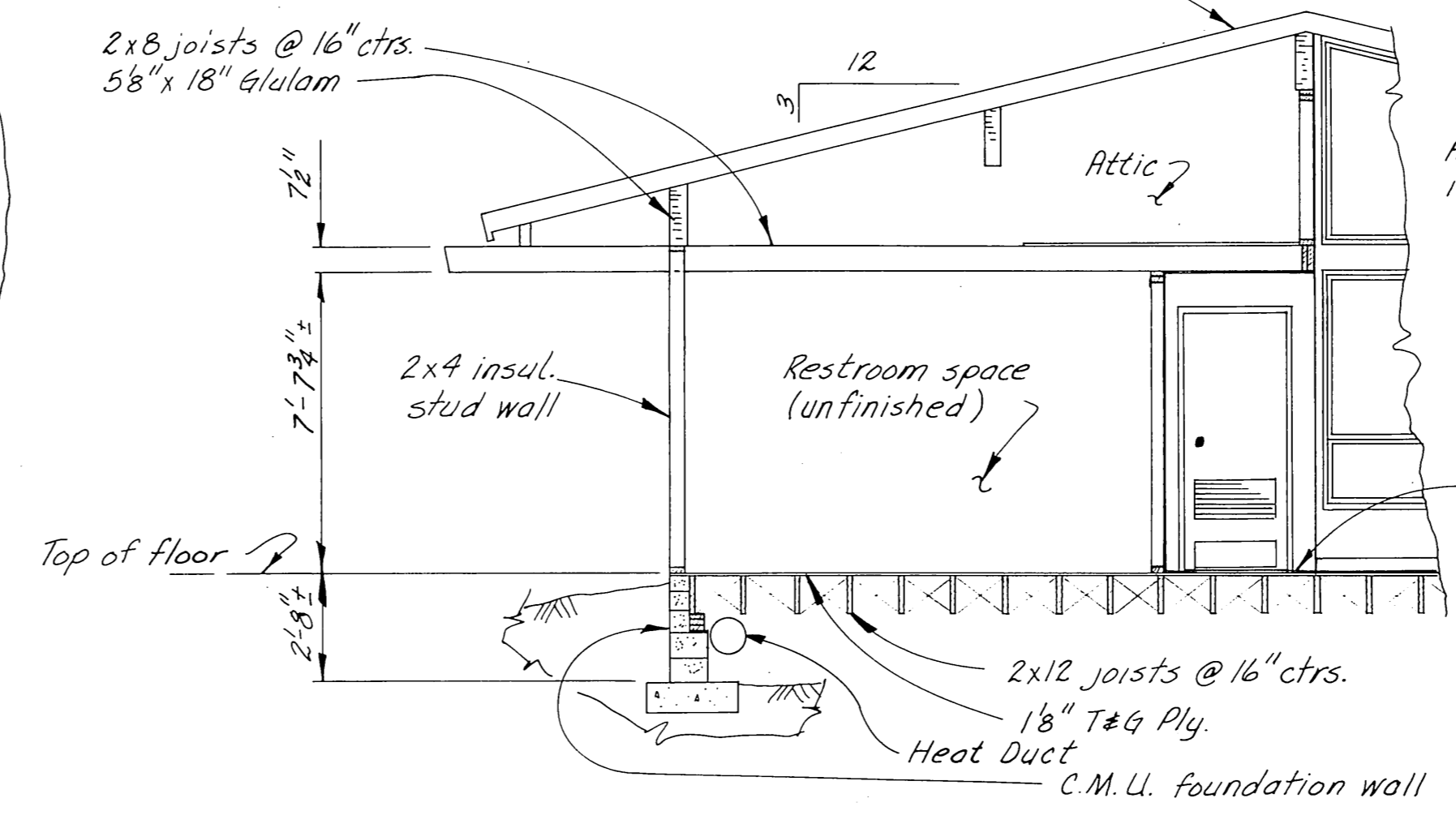
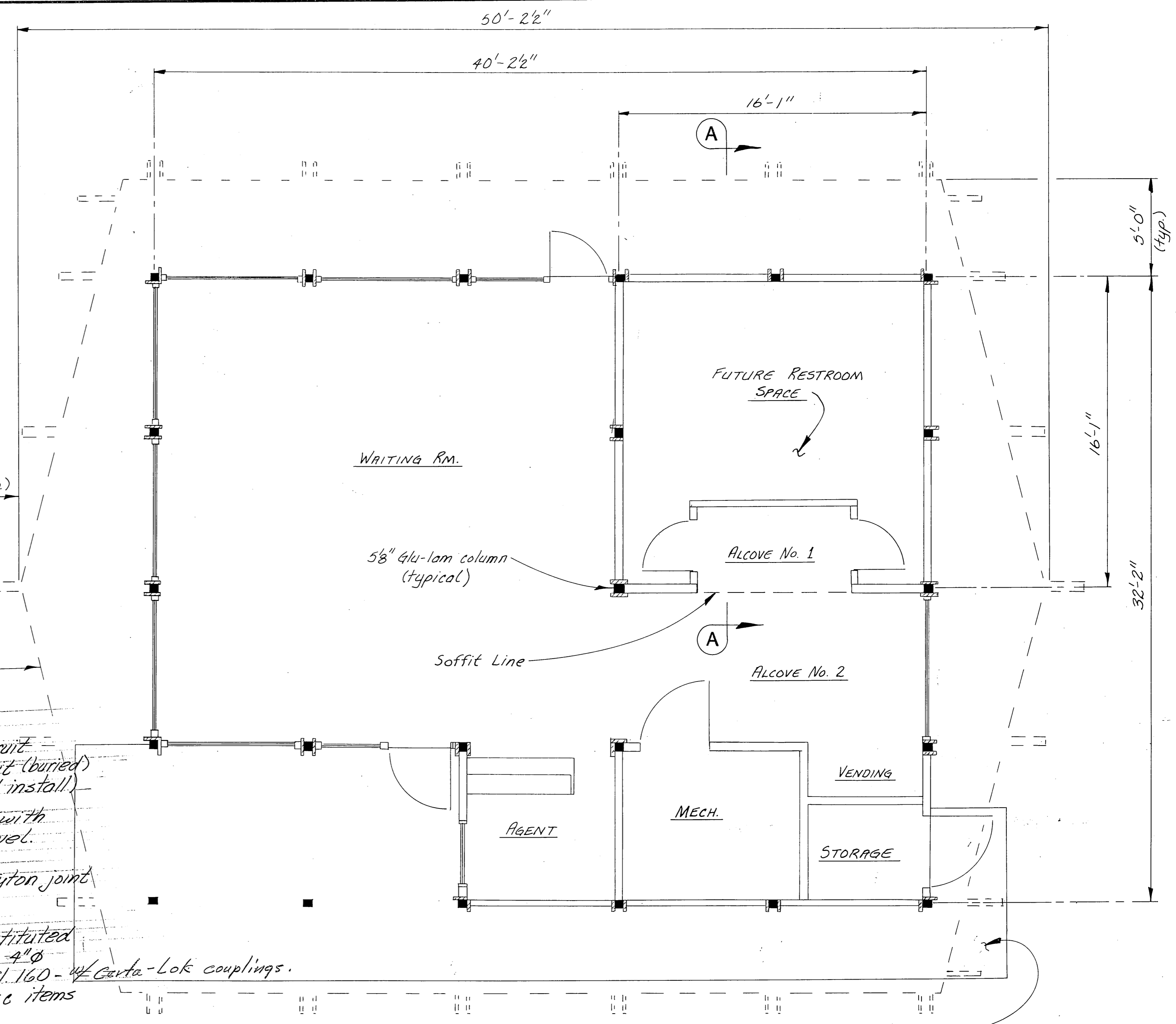


- OUTFALL NOTES:**
- Power Feed includes Branch Circuit to Bldg. Panel, Breaker, conduit (buried) and conductors. (Provide and install)
 - Clean-outs up at 45° angle with cap at or above ground level.
 - Use Ductile or ~~cast steel~~ Tyton joint or threaded 4" Ø
 - D.I. Tyton joint may be substituted for butt fused P.E. shown 4" Ø CertainTeed-PVC Yelomine - Cl. 160 - ~~4" Certi-Lok~~ couplings.
 - Couplings, connectors and misc items not shown.

Roof: Asphalt shake shingles, 1/2" Ply., 1/2" rigid insulation and 2" tongue & groove decking



AS BUILT - 1-21-86

Change Order No. 1

SEWAGE OUTFALL HOONAH RESTROOMS

DO NOT SCALE THIS DRAWING - USE DIMENSIONS

STATE OF ALASKA
DEPARTMENT OF TRANSPORTATION AND PUBLIC FACILITIES

Hoonah Alaska

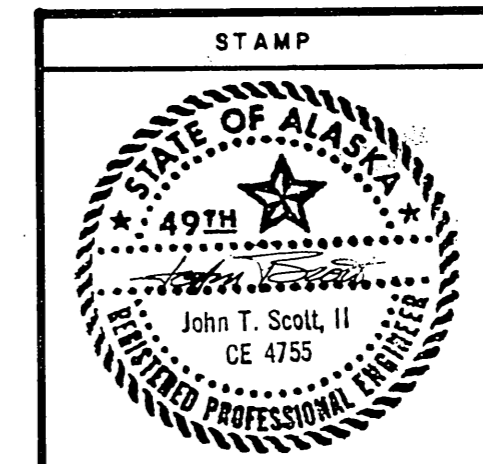
GENERAL LAYOUT

DESIGNED 15 CHECKED _____ DRAWN 15 DATE 10-11-84

PROJECT NUMBER X 71101 SHEET 1 OF 1

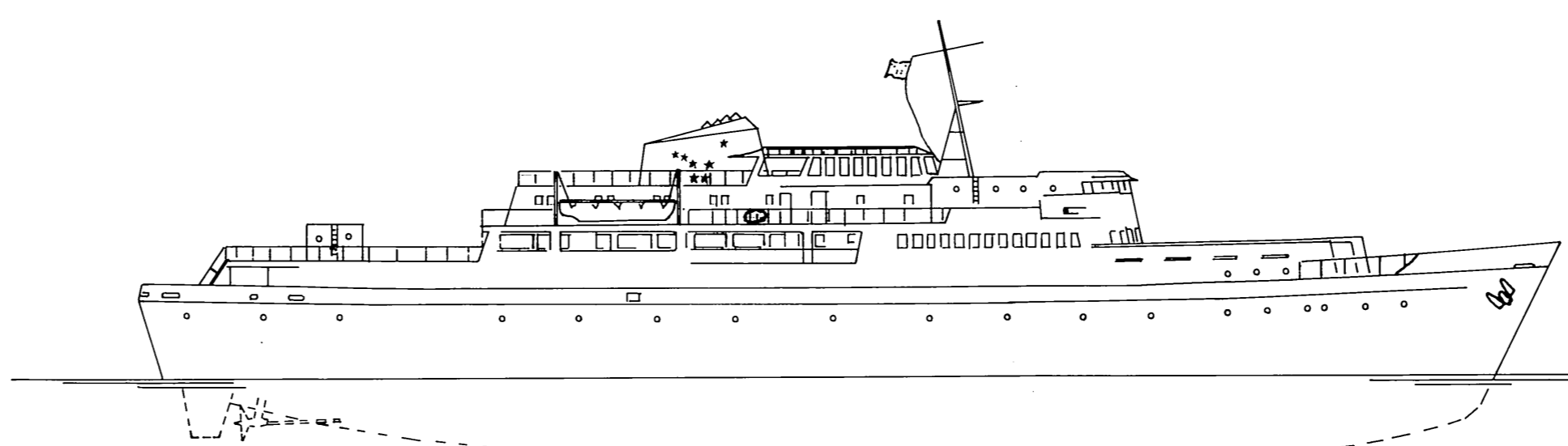
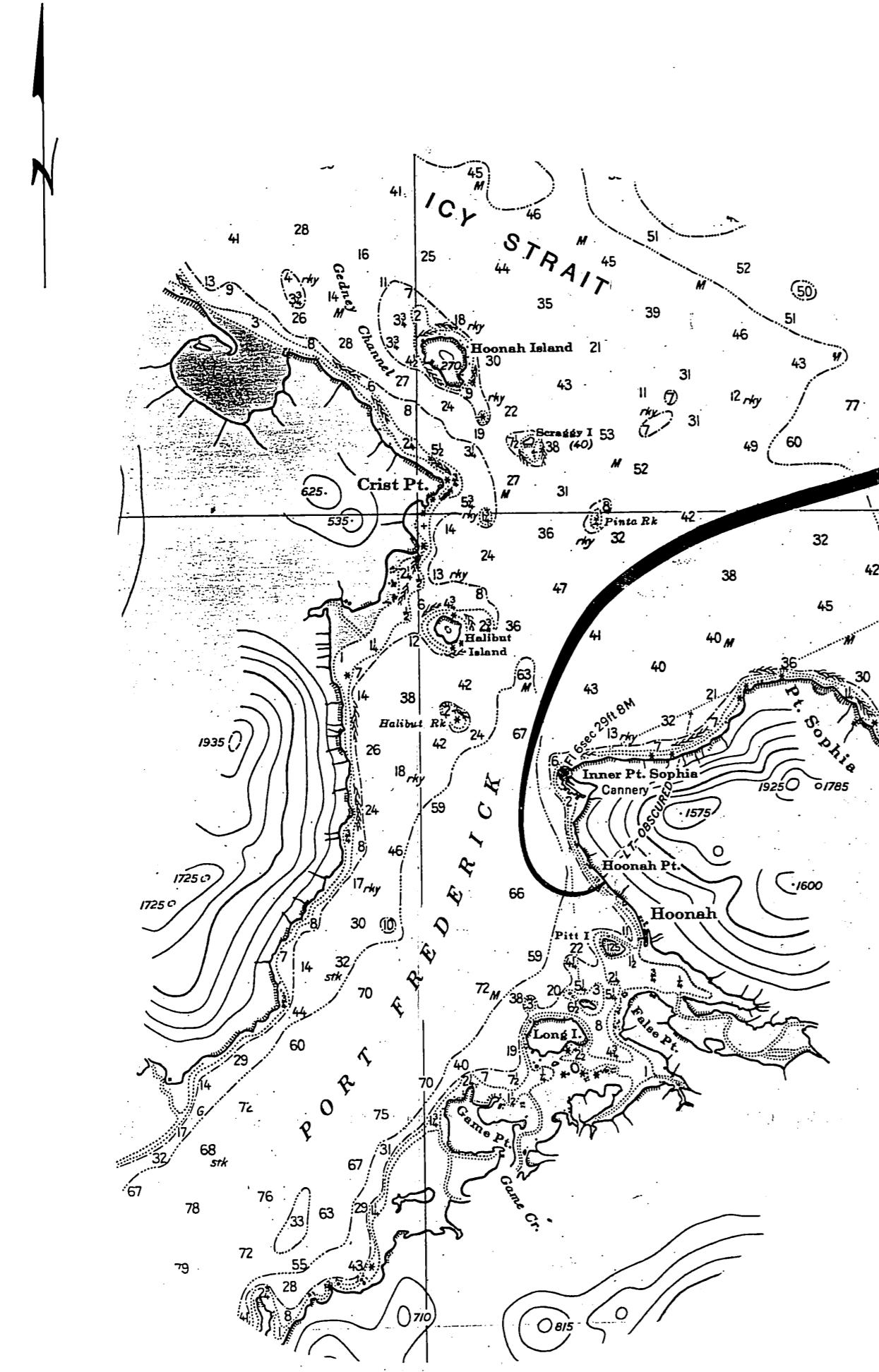
Rev. 5-31-85
Rev. 5-1-85

12-12-84



HOONAH FERRY TERMINAL RESTROOM FACILITIES,

PHASE I PROJECT NO. X-71101



PROJECT LOCATION

UNITED STATES
ALASKA - SOUTHEAST COAST
ICY STRAIT AND CROSS SOUND

Mercator Projection
Scale 1:80,000 at Lat. 58°12'

As Built Note: A U-V sterilizer & outfall line were installed on the waste holding tank.

- WORK SUMMARY -

*This project consists principally of the following items:
Remove and dispose of one existing outdoor concrete vault toilet with shelter. Construct grey water storage and supply system and waste system and holding tank. Within the existing terminal building construct two restrooms including all framing, electrical, mechanical and finishwork required. Construct new entry platforms and ramps at the terminal building main entry.*

AS BUILT - 1-21-86

Enlarged

INDEX TO SHEETS

1	Title Sheet	
2	General Layout	
3	Existing Restroom Space	
4	Holding Tanks	
5	New Floor Plan	
6	Plumbing	
7	Electrical	
8	Entry Modifications	

STATE OF ALASKA

DEPARTMENT OF TRANSPORTATION & PUBLIC FACILITIES

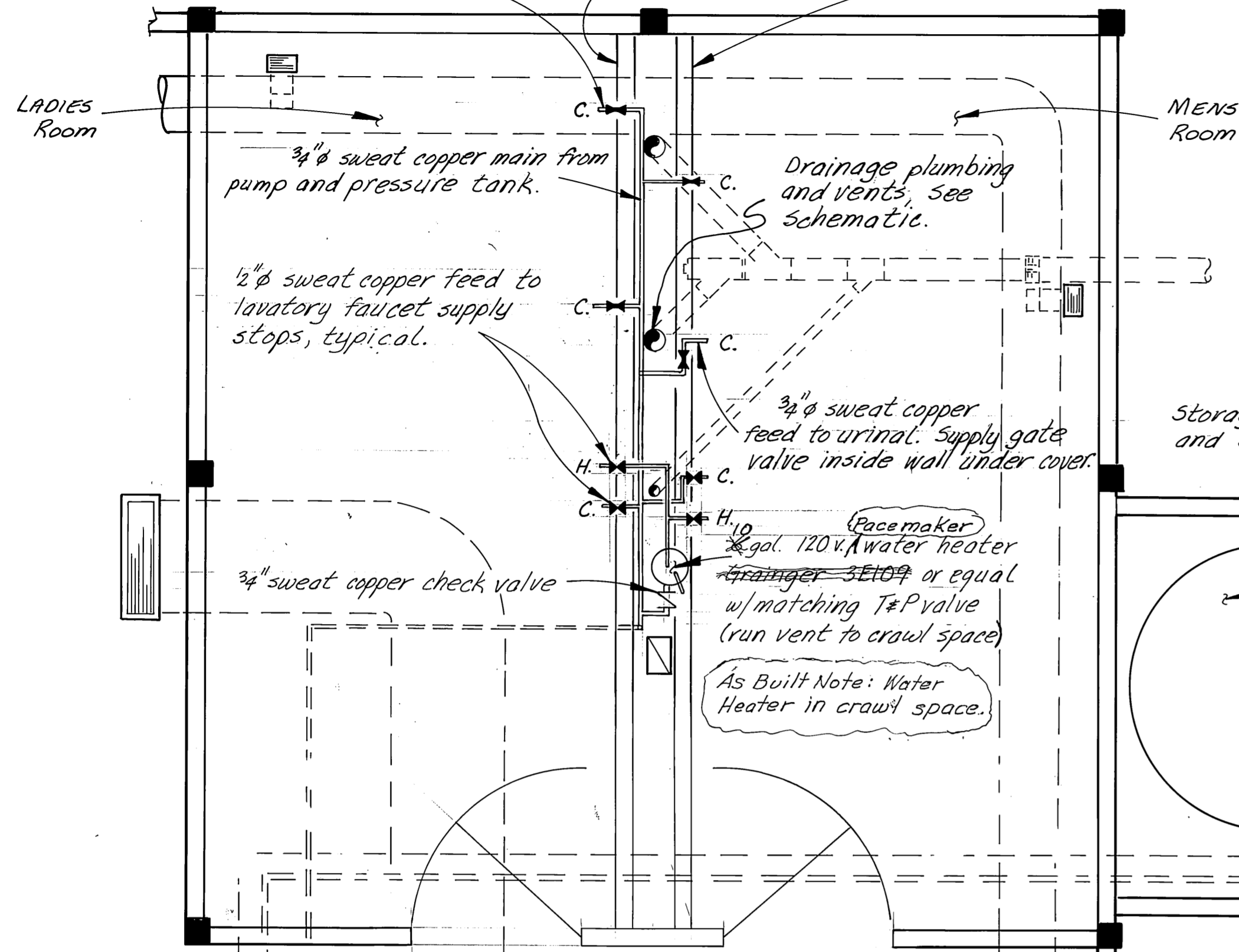
MARINE FACILITIES

APPROVED

Handwritten Signature
DIRECTOR
Recommend For Approval *Handwritten Signature* Group Design Chief
Sheet 1 of 8

New 2x4 plumbing walls provide blocking and added studs as req'd. to support carriers, pressure main, flanges and for access cover frames

1/2" sweat copper feed to W.C. supply stop outside wall, typical.



Remote reading pneumatic type liquid level gauge. McMaster-Carr No. 3984N3 or equal with sensing line. Mount gauge face 5'-6" off of floor.

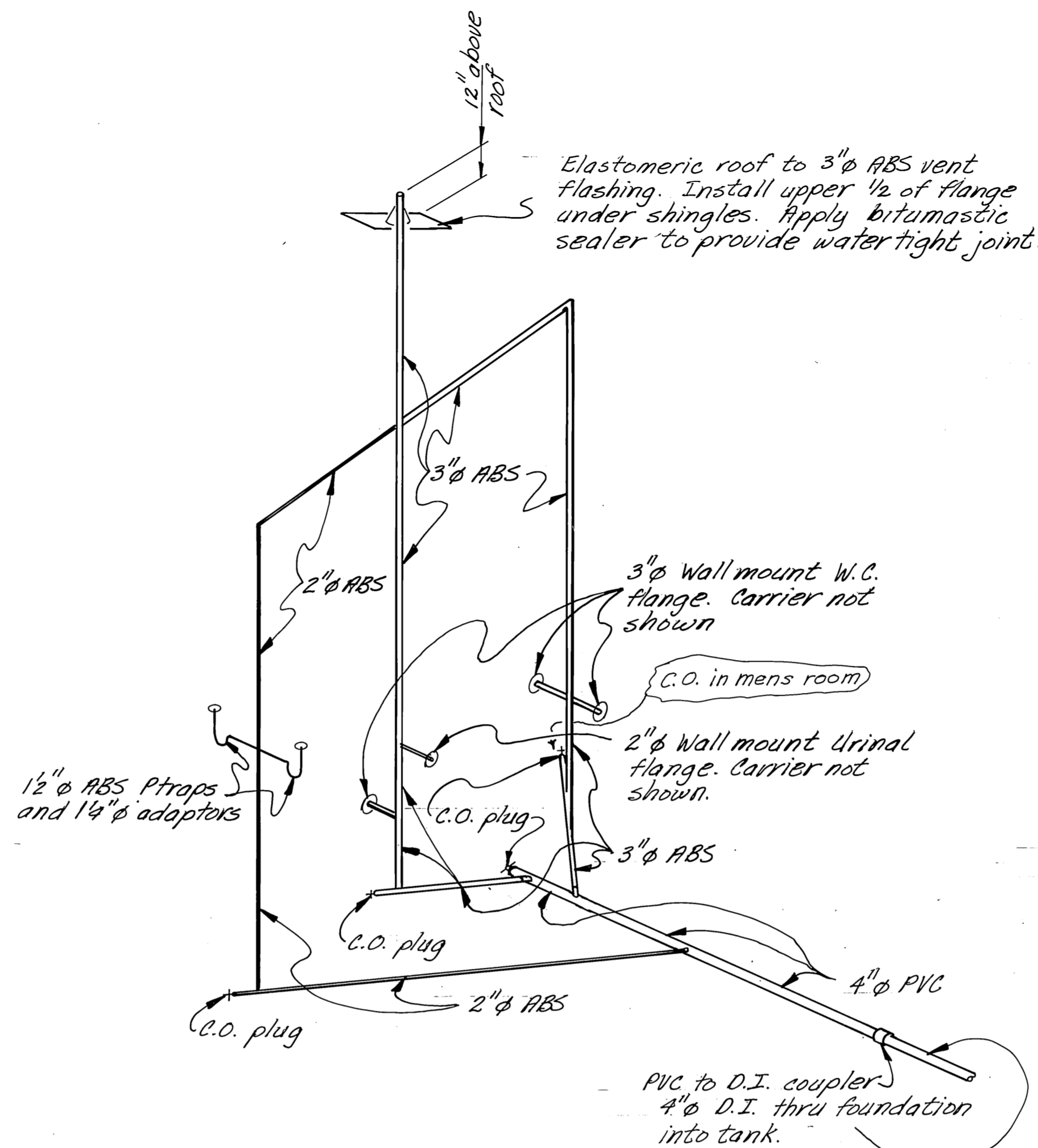
Jet Tank Control Panel

Pump, pressure tank and plumbing, see Schematic.

Existing F.A. furnace and ducting

Access door to fill, see Detail.

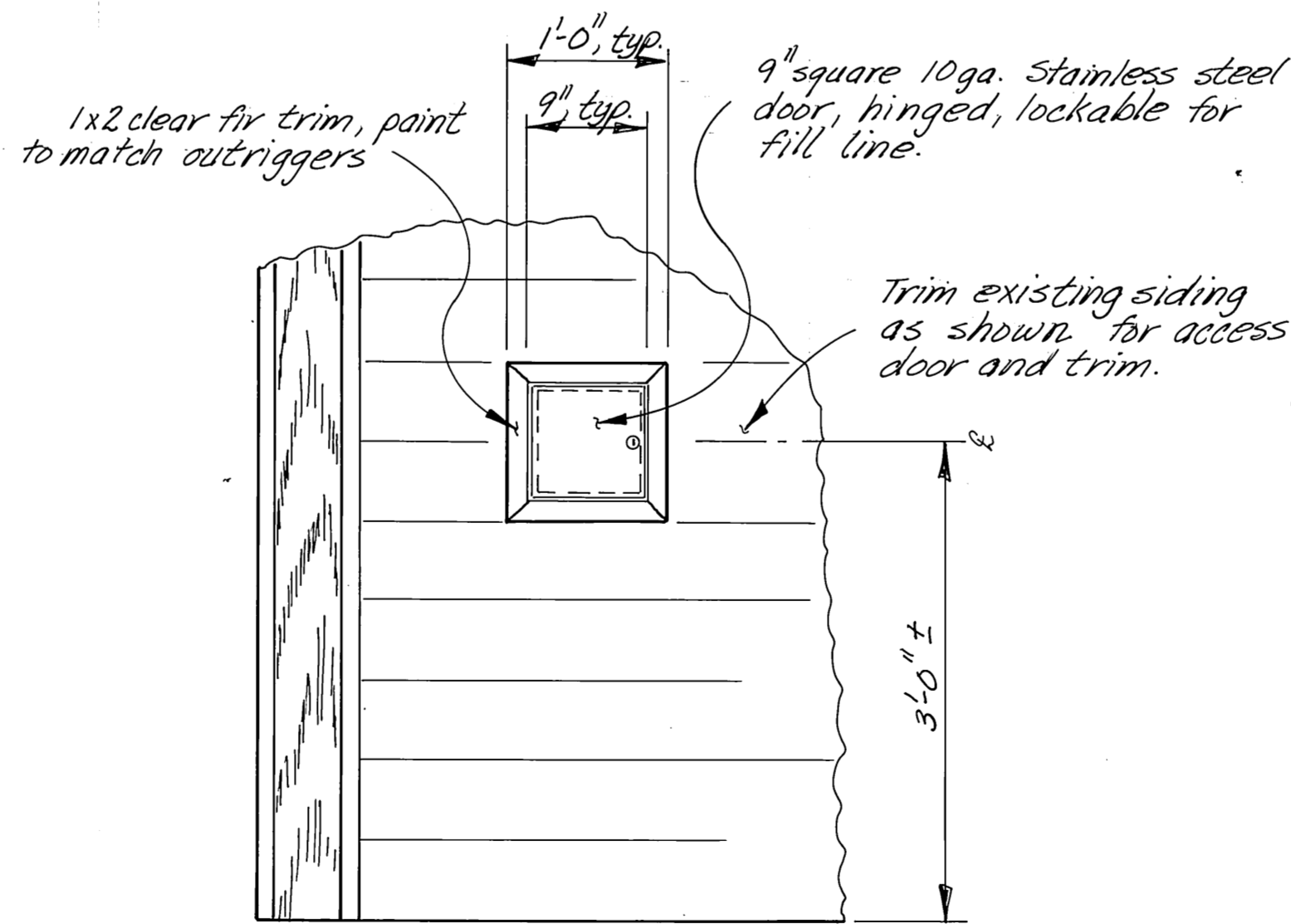
PLUMBING LAYOUT



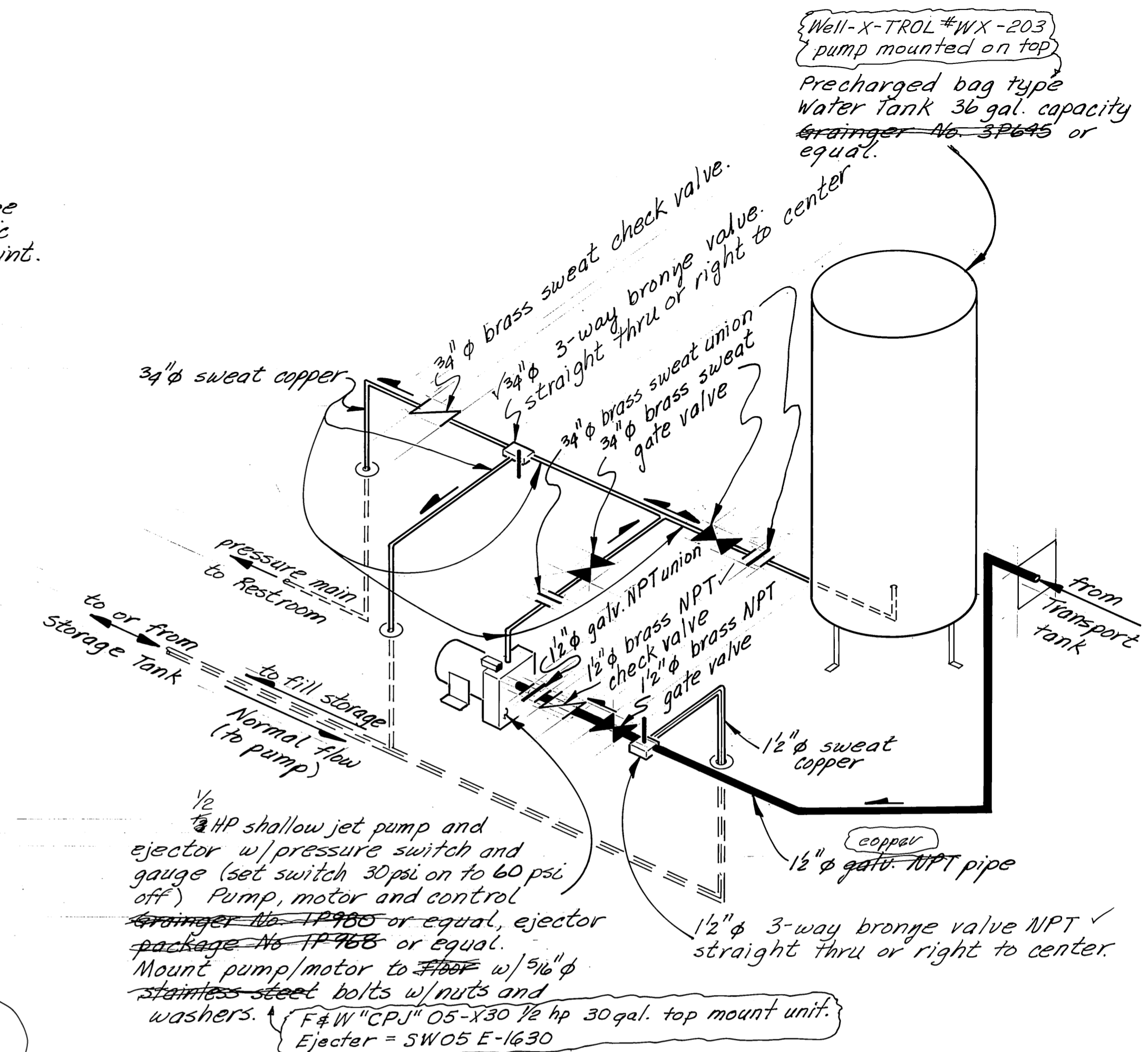
WASTE SCHEMATIC

Notes:

1. Solvent cement all joints except coupled PVC to D.I. joint.
2. Support drainage runs from floor/joist joists w/ plumber tape within 1ft. of each change in flow direction and 48" ctrs. max.
3. Flow slope on horizontal runs to be 1/4" per foot. (1/8" per foot min.)



ACCESS DOOR DETAIL



SUPPLY SCHEMATIC

Notes:

1. Where plumbing passes thru floors or walls chrome trim rings shall be used.
2. Plumbing in crawl space to be suspended from floor joists w/ plumbers tape within 1ft. of any change in flow direction or at 48" ctrs. max.
3. Plumbing in walls to be supported by clamps to studs at 1 ft from any change in flow direction or at 48" ctrs. max.
4. Provide 12" high air trap bounce chambers within 1ft. of end of ea. fixture supply branch in the Restrooms. Air traps to be located within the plumbing walls to prevent hydraulic hammer.

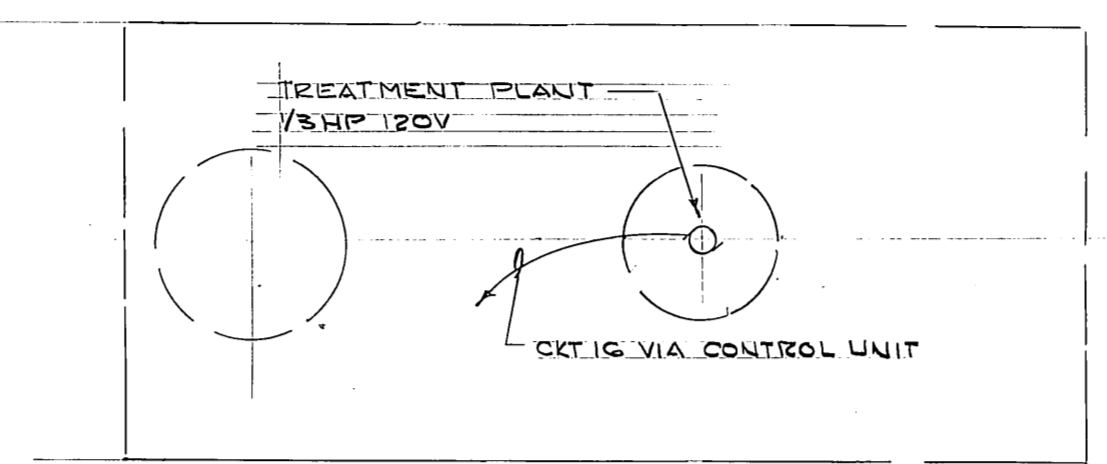
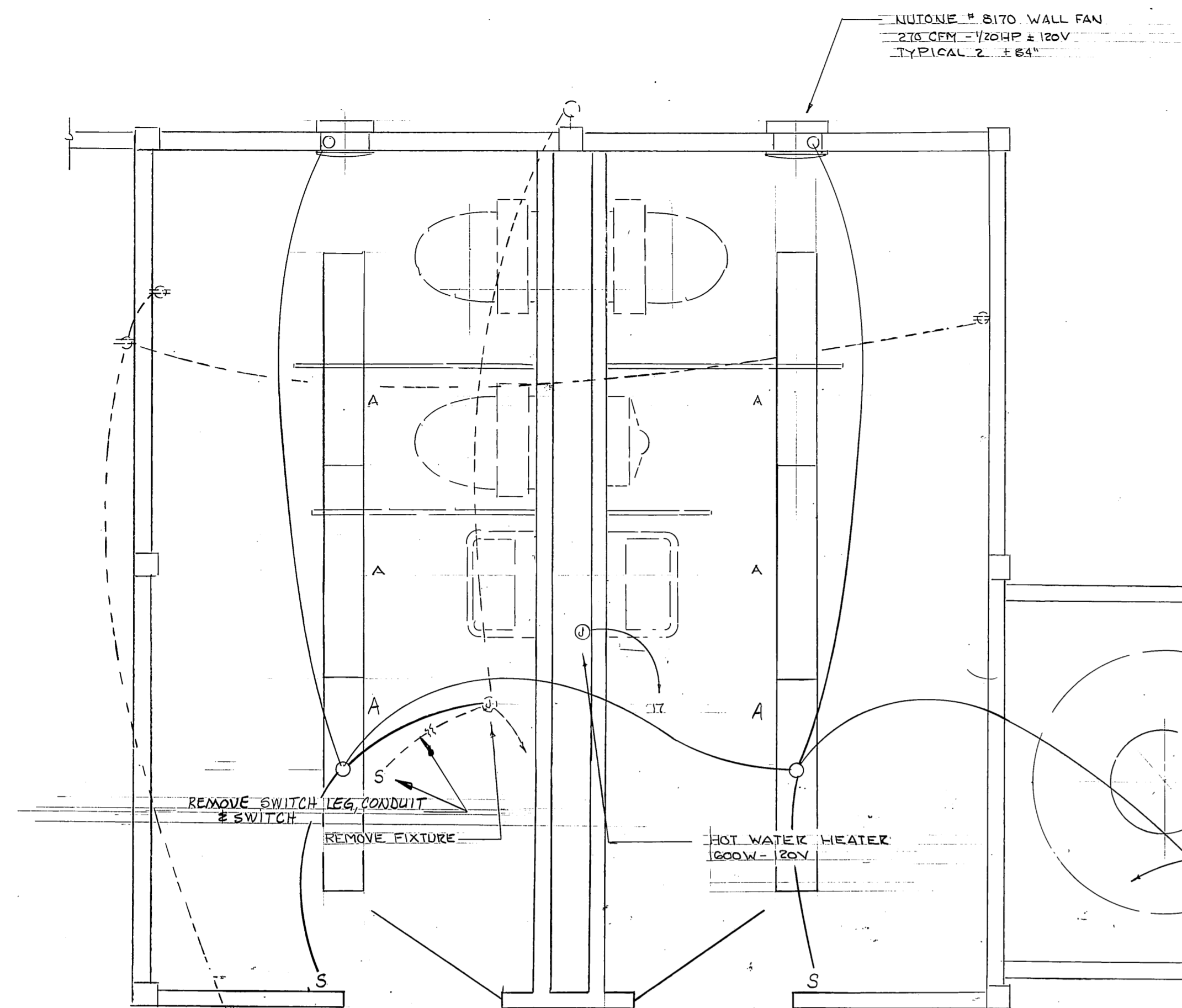
GENERAL NOTES:

1. Waste and Supply system to be pressure tested with water prior to concealment under sheetrock per Technical Specifications.
2. Supply system shall be test run in the fill storage tank and pressurized modes per Technical Specifications with all appliances in place
3. Waste system to be tested by operation of each appliance.
4. Any defects as a result of testing shall be corrected by the Contractor.

AS BUILT-1-21-86

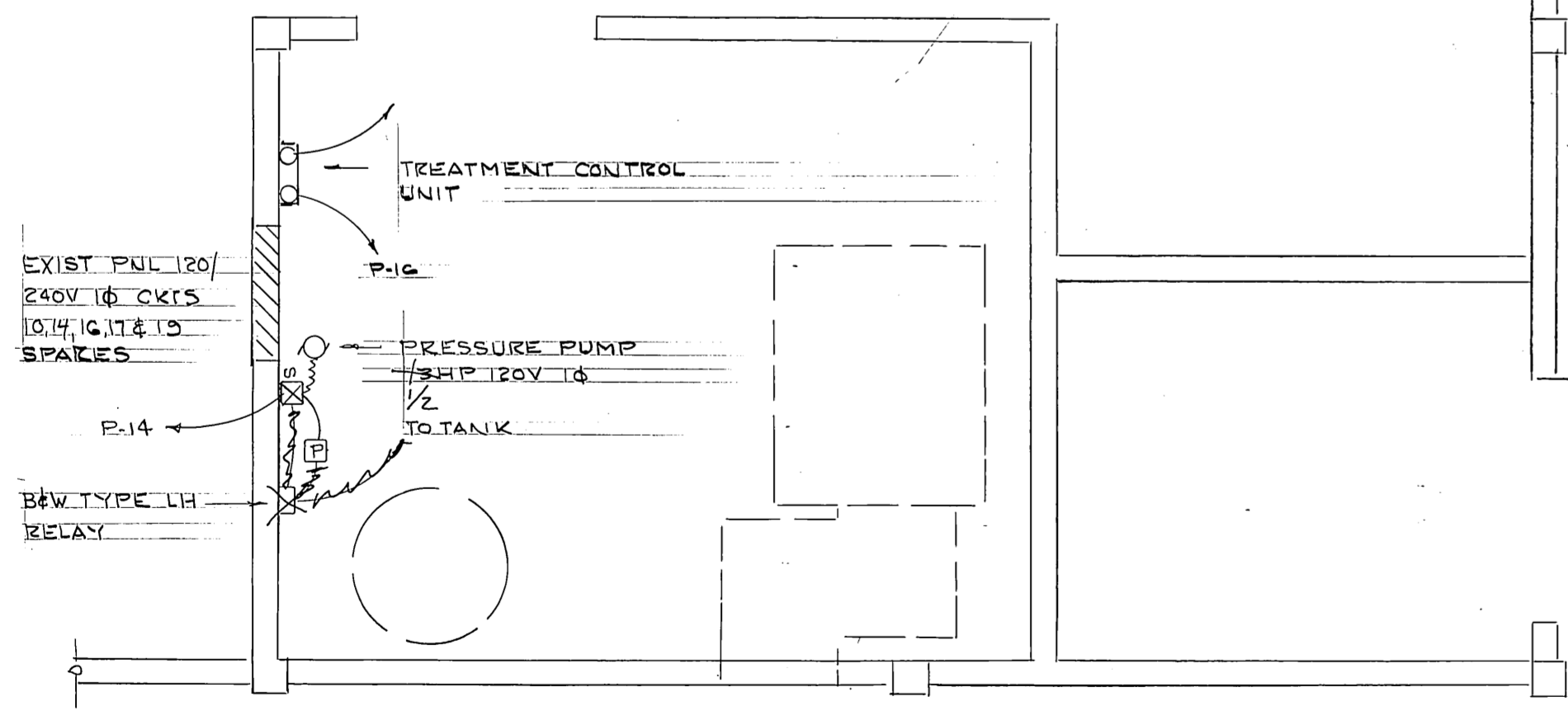
STAMP		DO NOT SCALE THIS DRAWING - USE DIMENSIONS	
STATE OF ALASKA			
DEPARTMENT OF TRANSPORTATION AND PUBLIC FACILITIES			
Hoonah		Alaska	
PLUMBING			
DESIGNED <i>LS</i>	CHECKED <i>LJB</i>	DRAWN <i>LS</i>	DATE 11-87
PROJECT NUMBER X 71101		SHEET 6 OF 8	

12-12-84

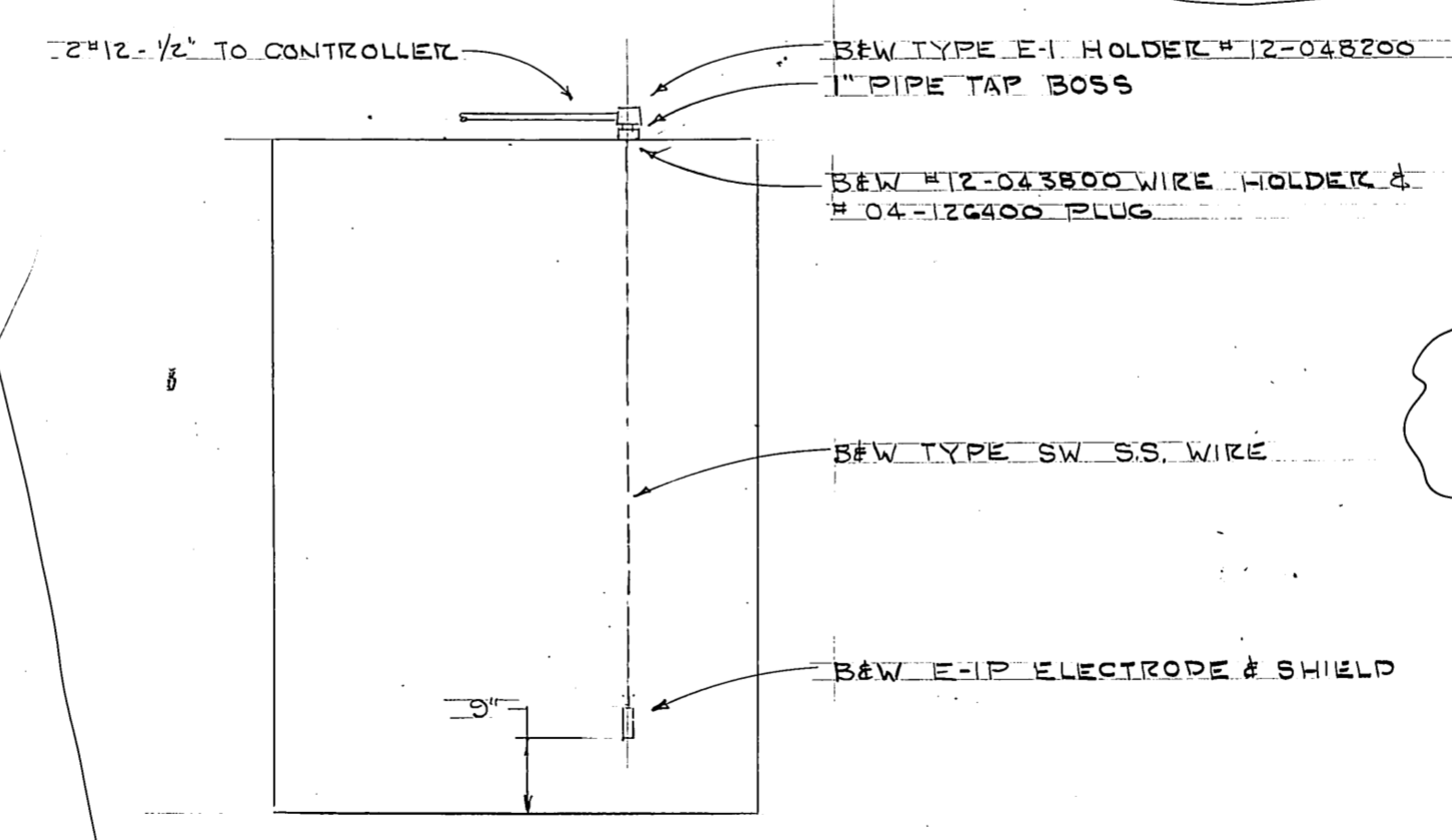
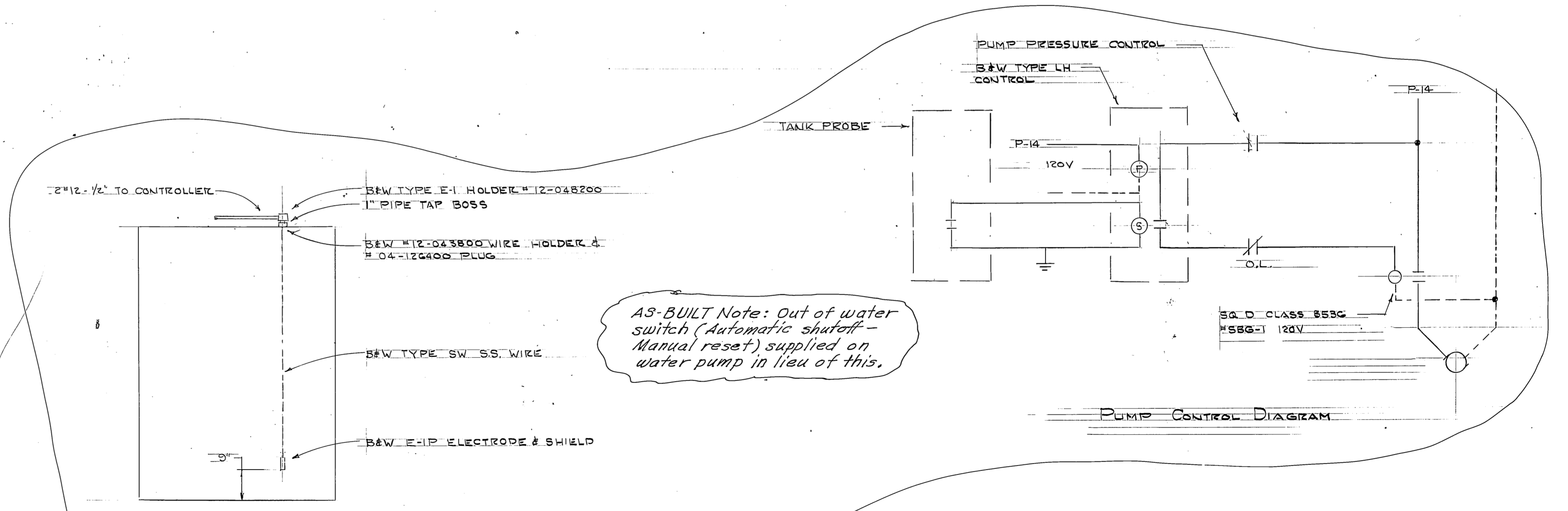


FIXTURE SCHEDULE			
NO	MEG	W	REMARKS
A	LITHONIA VC240A	2-48RS	CEILING
B	SONOCO VW-16C	160	± 30"

- SYMBOLS**
- FLUORESCENT FIXTURE SEE SCHEDULE
 - WALL
 - SWITCH +48"
 - DUPLEX +18"
 - " EXISTING
 - JUNCTION
 - MOTOR
 - MAGNETIC STARTER BY ELECTRICAL
 - PRESSURE SWITCH BY OTHERS - INST BY ELECT
 - PROBE CONTROL BY ELECT.
 - NEW CONDUIT & WIRING
 - EXIST " & " DISCONNECTED



FLOOR PLAN
1/2" = 1'-0"

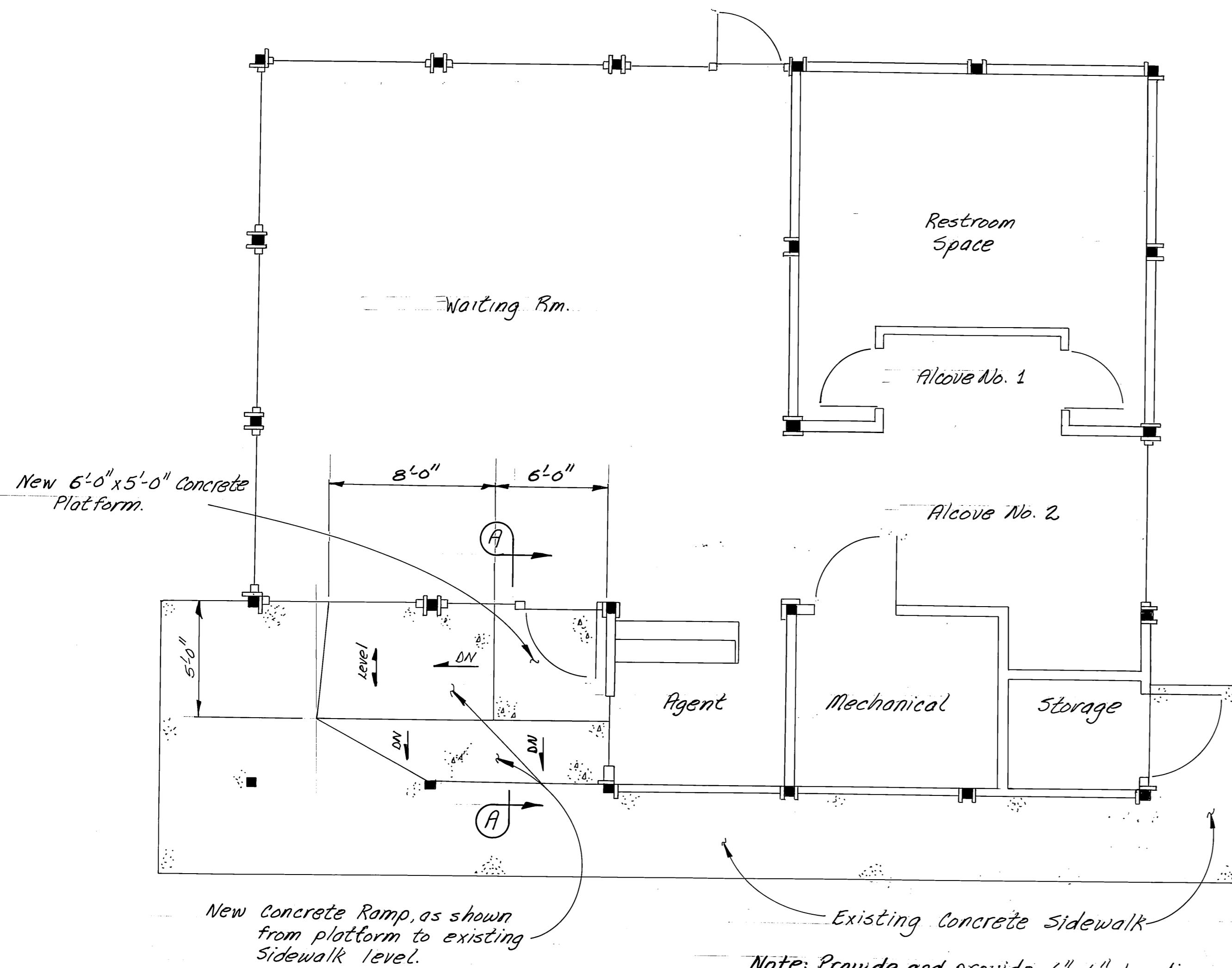


TANK DETAIL
1/2" = 1'-0"

AS BUILT - 15-1-21-86

	DO NOT SCALE THIS DRAWING - USE DIMENSIONS			
	STATE OF ALASKA DEPARTMENT OF TRANSPORTATION AND PUBLIC FACILITIES			
	Hoonah		Alaska	
ELECTRICAL				
DESIGNED <u>LPL</u>	CHECKED _____	DRAWN <u>LPL</u>	DATE <u>Nov 84</u>	
PROJECT NUMBER <u>X71101</u>	SHEET <u>7</u> OF <u>8</u>			

Called
NORTH



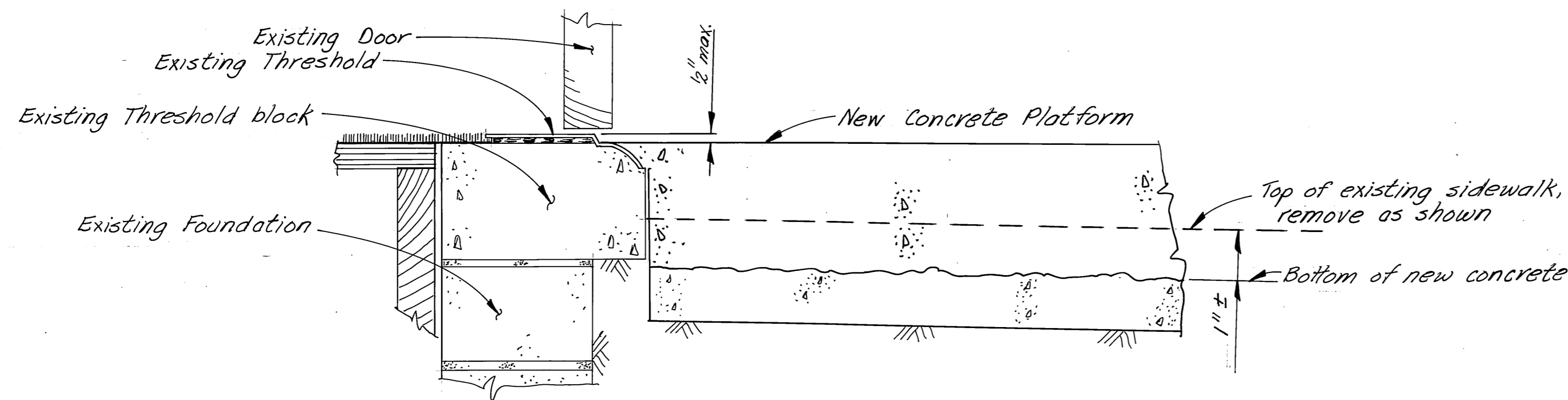
New 6'-0" x 5'-0" Concrete Platform.

New Concrete Ramp, as shown from platform to existing Sidewalk level.

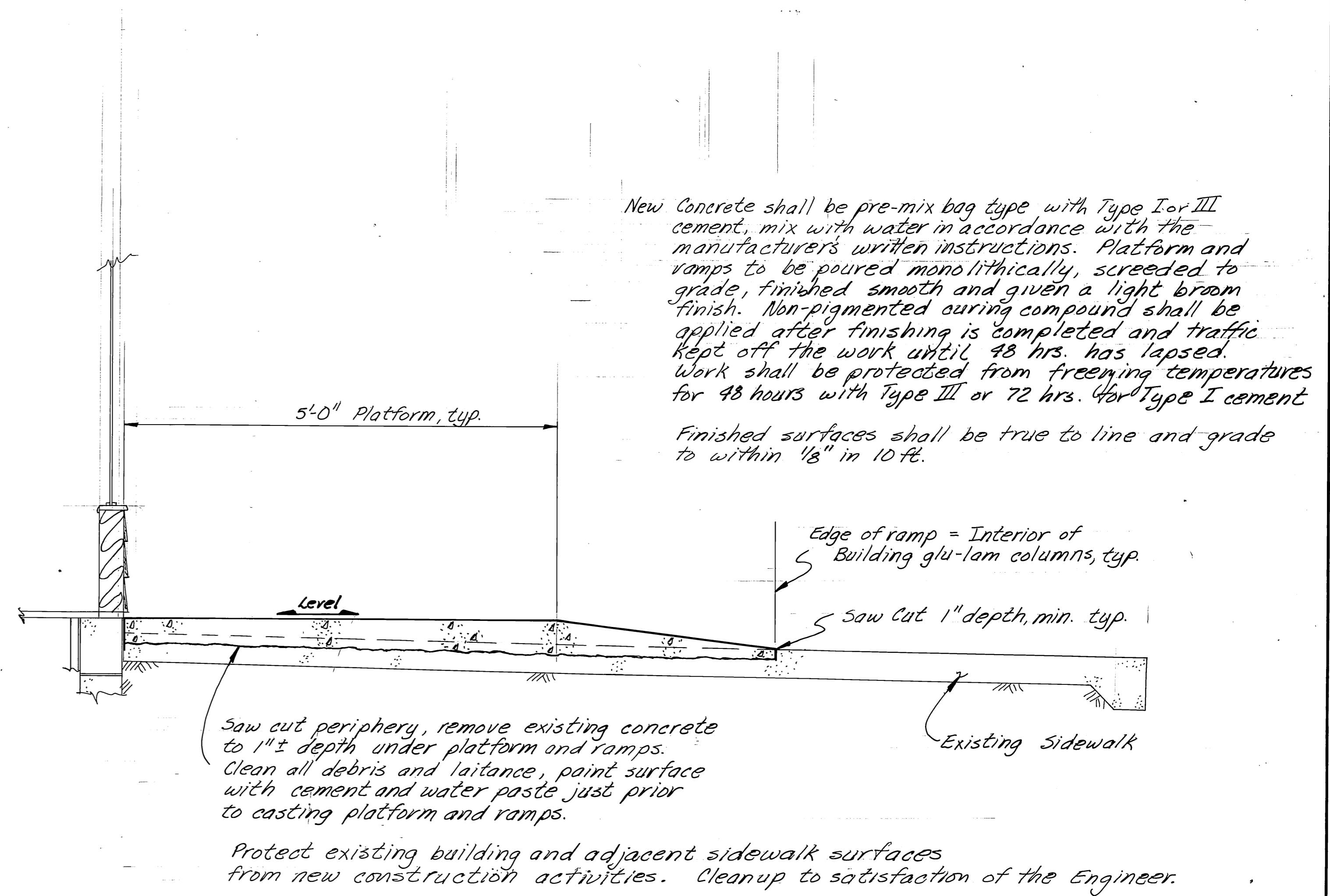
Existing Concrete Sidewalk

Note: Provide and provide 6"x6" handicap symbol decal for main entry door window. (ADA 117.1 '80)

PLAN



THRESHOLD DETAIL



New Concrete shall be pre-mix bag type with Type I or III cement, mix with water in accordance with the manufacturer's written instructions. Platform and ramps to be poured monolithically, screeded to grade, finished smooth and given a light broom finish. Non-pigmented curing compound shall be applied after finishing is completed and traffic kept off the work until 48 hrs. has lapsed. Work shall be protected from freezing temperatures for 48 hours with Type III or 72 hrs. for Type I cement.

Finished surfaces shall be true to line and grade to within 1/8" in 10 ft.

Saw cut periphery, remove existing concrete to 1"± depth under platform and ramps. Clean all debris and laitance, paint surface with cement and water paste just prior to casting platform and ramps.

Protect existing building and adjacent sidewalk surfaces from new construction activities. Cleanup to satisfaction of the Engineer.

SECTION A - A

AS BUILT - 1-21-86

	DO NOT SCALE THIS DRAWING - USE DIMENSIONS			
	STATE OF ALASKA			
	DEPARTMENT OF TRANSPORTATION AND PUBLIC FACILITIES			
	Hoonah		Alaska	
ENTRY MODIFICATIONS				
DESIGNED <u>LS</u>	CHECKED _____	DRAWN <u>LS</u>	DATE <u>11-84</u>	
PROJECT NUMBER <u>X 71101</u>	SHEET <u>8</u> OF <u>8</u>			

12-12-84