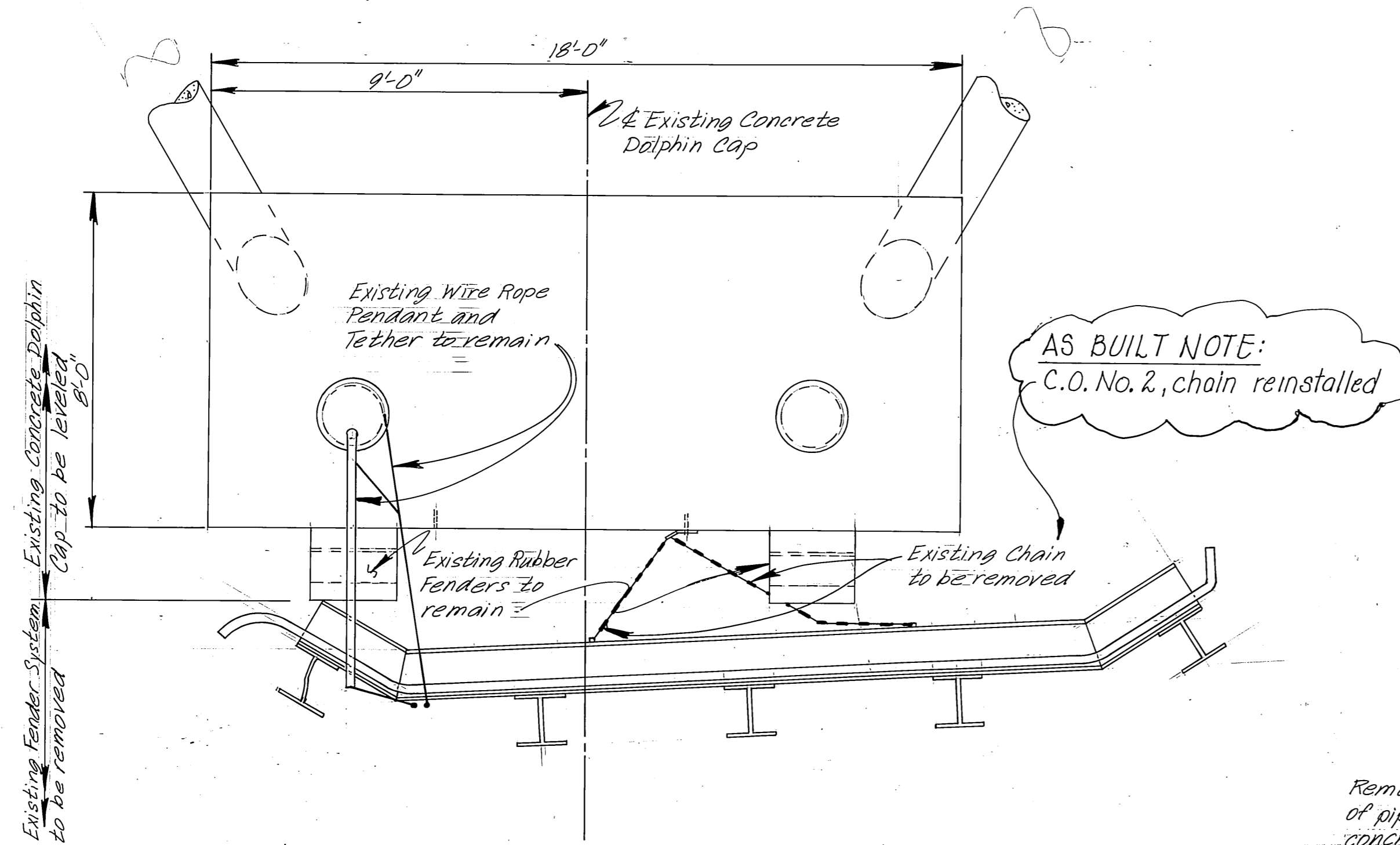
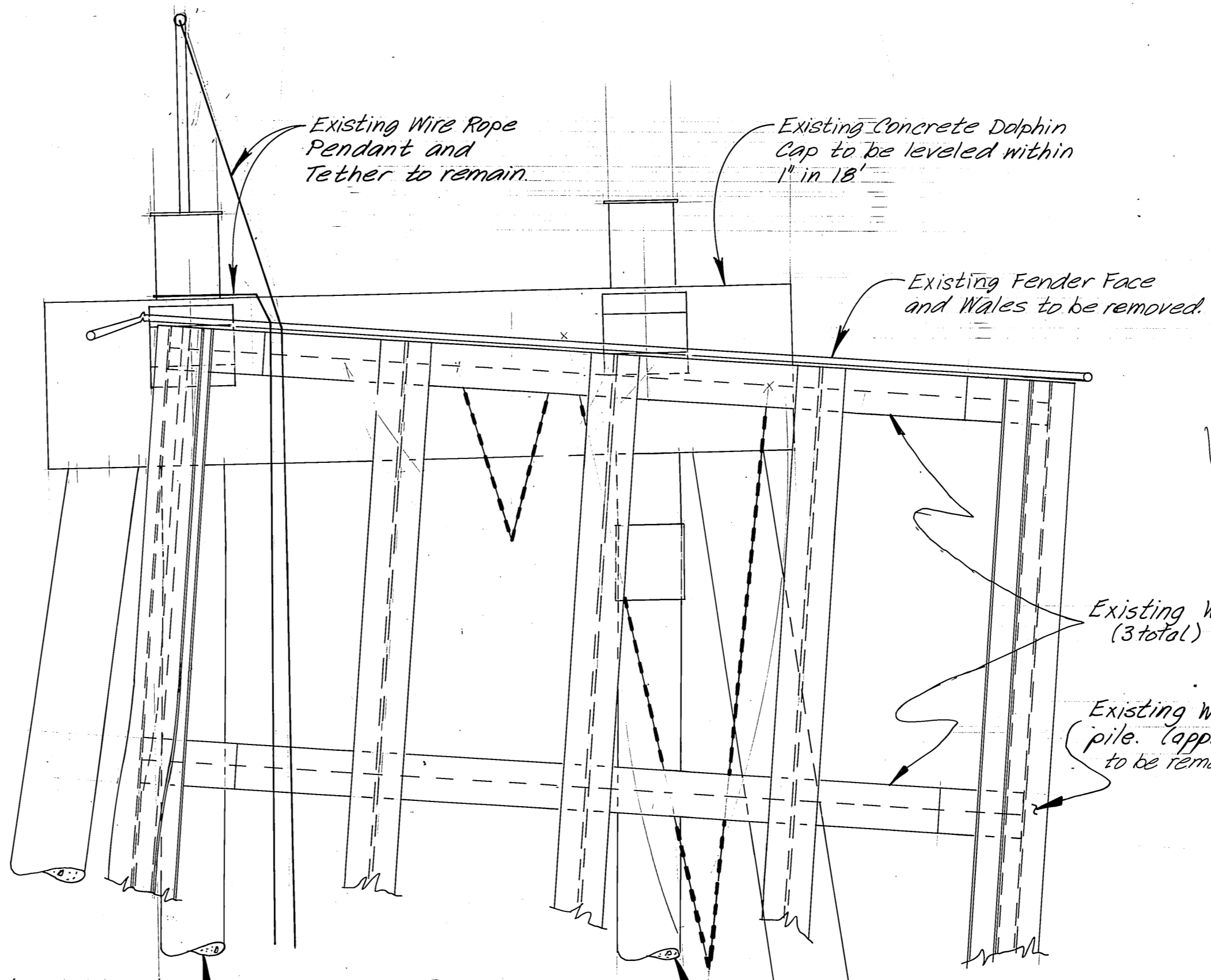


GENERAL LAYOUT
0 10 20 30 40
Ft.



PLAN

EXISTING DOLPHIN
0 1 2 3 4
Ft.



FRONT ELEVATION

Remove deformed section of pipe pile and damaged concrete fill. Place new splice after leveling cap. See details sheet 4.

Remove existing pile splice and replace with new splice after leveling cap. See details sheet 4.

Note: Existing 4x12 face timbers on pile flanges not shown. These to be replaced. ~~See Note 3 on sheet 3~~ awarded. See Note 3 on sheet 3.

GENERAL NOTES

1. Specifications: Construction - Per Contract Documents for Project No. X 70006 Design - AMHS Design Standards
2. Design Unit Stresses:
Steel - A36 F_s = 20 ksi
A53 F_s = 20 ksi
Timber - F_b = 1.0 ksi F_v = 0.085 ksi
3. Materials: Structural steel shall be ASTM A36 or A53 as shown and shall be galvanized after fabrication. Timber shall be Douglas Fir No. 1, treated to 12 pct retention by assay of creosote.
4. Piling: Piling shall be galvanized structural steel shape HP 14 x 89 and 18" x 18" wall steel pipe. Pipe piles shall be driven with an APFO 17000 Reinforced Tip.

	Cutoff El.	Est. Tip El.	Min. Pen.	Design Bearing
HP 14 x 89	+26.50	-40.0	15 ft.	50 tons
18" x 18" Pipe	+27.5 ±	-70.0	30 ft.	50 tons

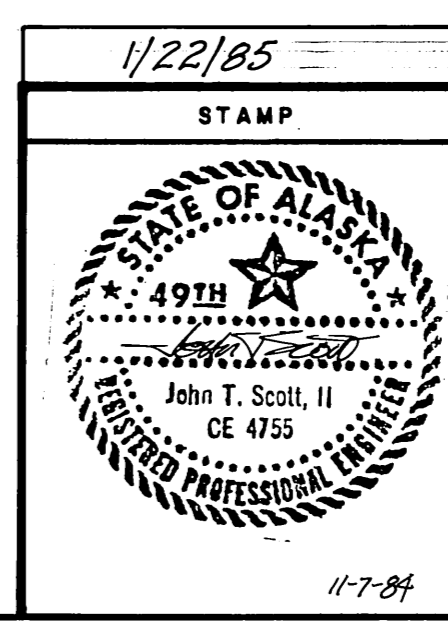
As Built Note: Supplemental not awarded

ESTIMATED QUANTITIES			Basic Bid	Supplemental
Item	Unit	Quantity		
Removal of Struct. and Obstruct.	L.S.	All Req'd.		
Structural Steel Piles, Furnished	L.F.	333		
HP 14 x 89				
Structural Steel Piles, Furnished	L.F.	103		
18" x 18" wall pipe				
HP 14 x 89 Piles, Driven	Ea.	5		
18" x 18" wall Piles, Driven	Ea.			
Structural Steel Fender System, Furnish, Fabricate and Erect	L.S.	All Req'd.		
Pile Welpment and Timber facing, Furnish, Fabricate and Erect	L.S.	All Req'd.		
Bearing Repair	L.S.	All Req'd.		

- ① Includes approx. 10,200 lbs. steel, cable and hardware.
- ② Includes approx. 1,000 lbs. steel, 6.3MBM timber and hardware

TIDE DATA

EHW	20.0
MHHW	14.8
MHW	13.9
MLLW	0.0
ELW	-5.0



1/22/85 AS BUILT 1-14-86

DO NOT SCALE THIS DRAWING - USE DIMENSIONS

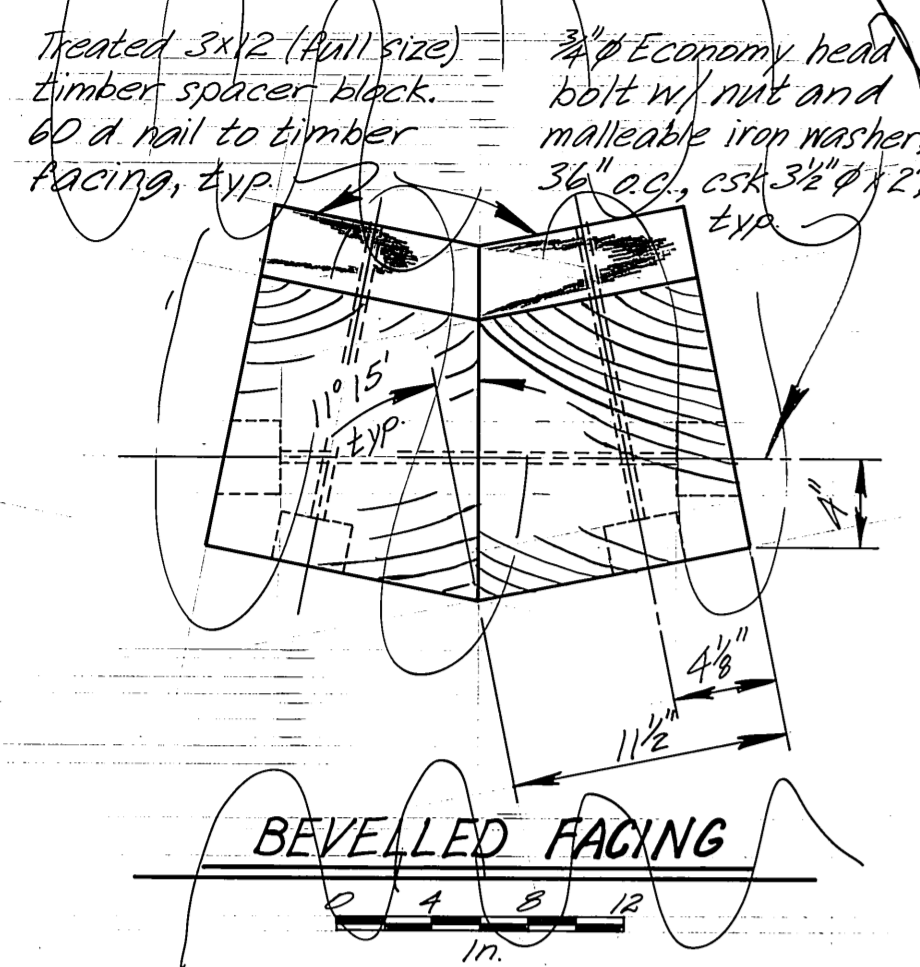
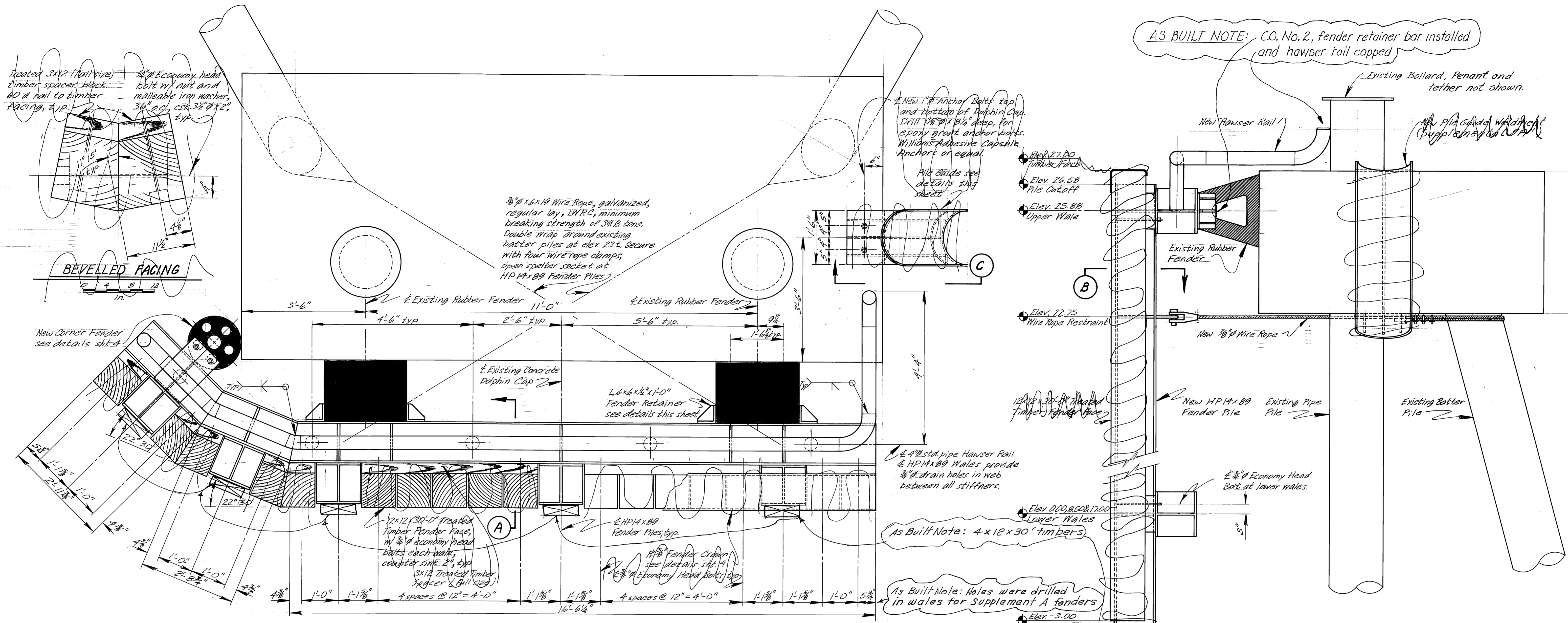
STATE OF ALASKA
DEPARTMENT OF TRANSPORTATION AND PUBLIC FACILITIES

Hoonah Alaska

GENERAL LAYOUT

DESIGNED L/LB CHECKED J/S DRAWN L/LB DATE 10/84

PROJECT NUMBER X 70006 SHEET 2 OF 6



New Corner Fender see details sh. 4

3/8" φ x 6 x 19 Wire Rope, galvanized, regular lay, WRC, minimum breaking strength of 388 tons. Double wrap around existing batter piles at elev. 23'. Secure with four wire rope clamps, open spelter socket at HP14x89 Fender Piles.

New 1" Anchor Bolts top and bottom of Dolphin Cap. Drill 1/2" x 6 1/2" deep, for epoxy grout anchor bolts. Williams Adhesive Capsule Anchors or equal.

Pile Guide see details this sheet

4" std pipe Hawser Rail & HP14x89 Wales provide 3/8" drain holes in web between all stiffeners.

AS BUILT NOTE: 4 x 12 x 30' timbers

AS BUILT NOTE: Holes were drilled in wales for Supplement A fenders

AS BUILT NOTE: C.O. No. 2, fender retainer bar installed and hawser rail capped

Existing Bollard, Penant and tether not shown.

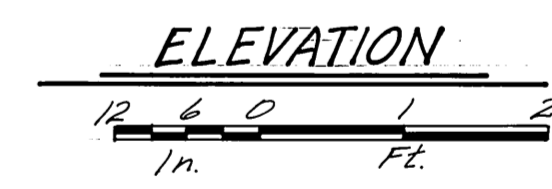
New Pile Guide Weldment (Supplement A)

Elev. 27.00 Timber Face
Elev. 26.58 Pile Cutoff
Elev. 25.88 Upper Wale

Elev. 22.75 Wire Rope Restraint

Elev. 0.00, 8.50 & 17.00 Lower Wales

Elev. -3.00



As Built Note: 4 x 12 x 30' timbers installed on face of piles

SECTION (A)

* Supplemental "A"

SECTION (B)

VIEW (D)

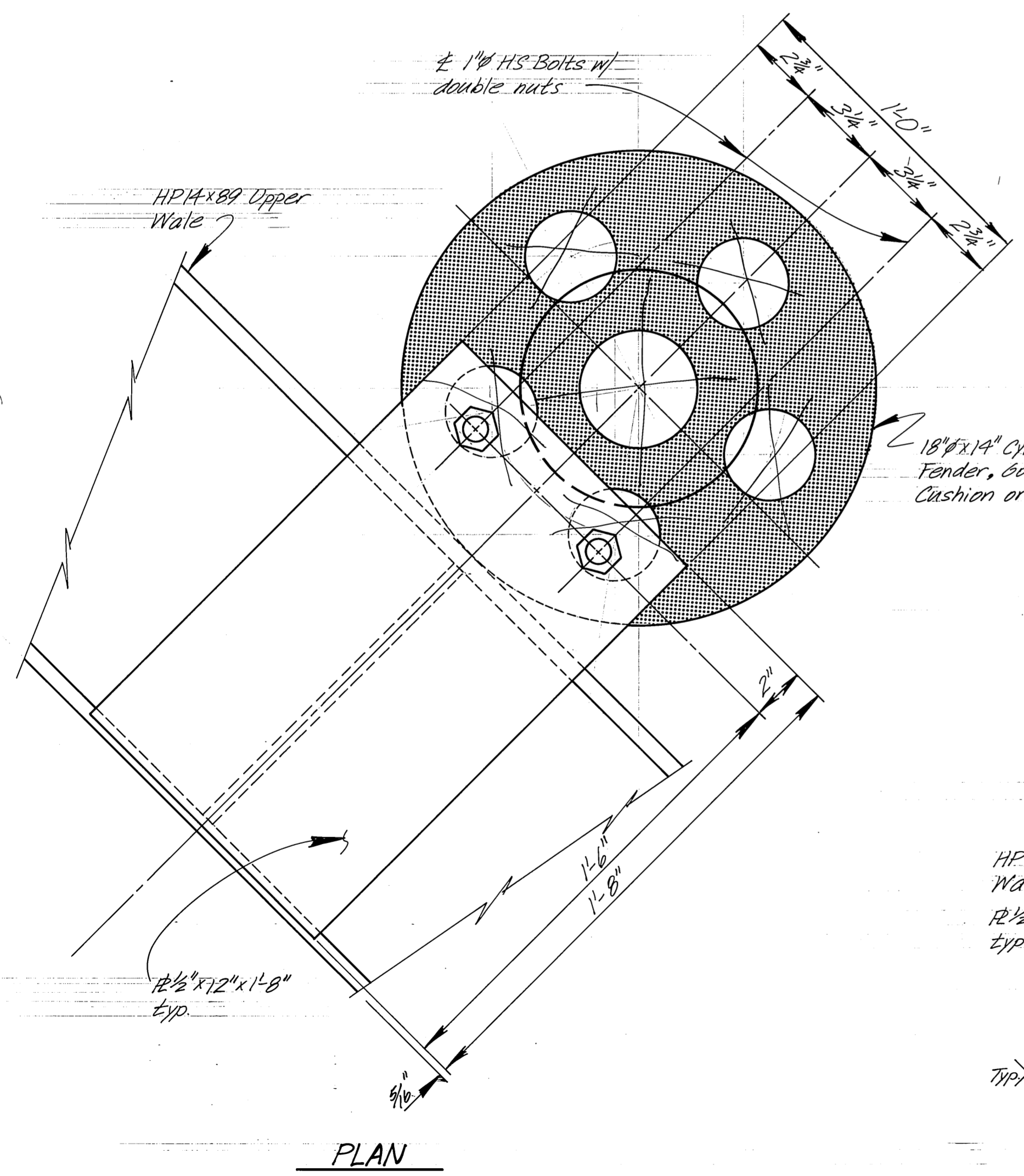
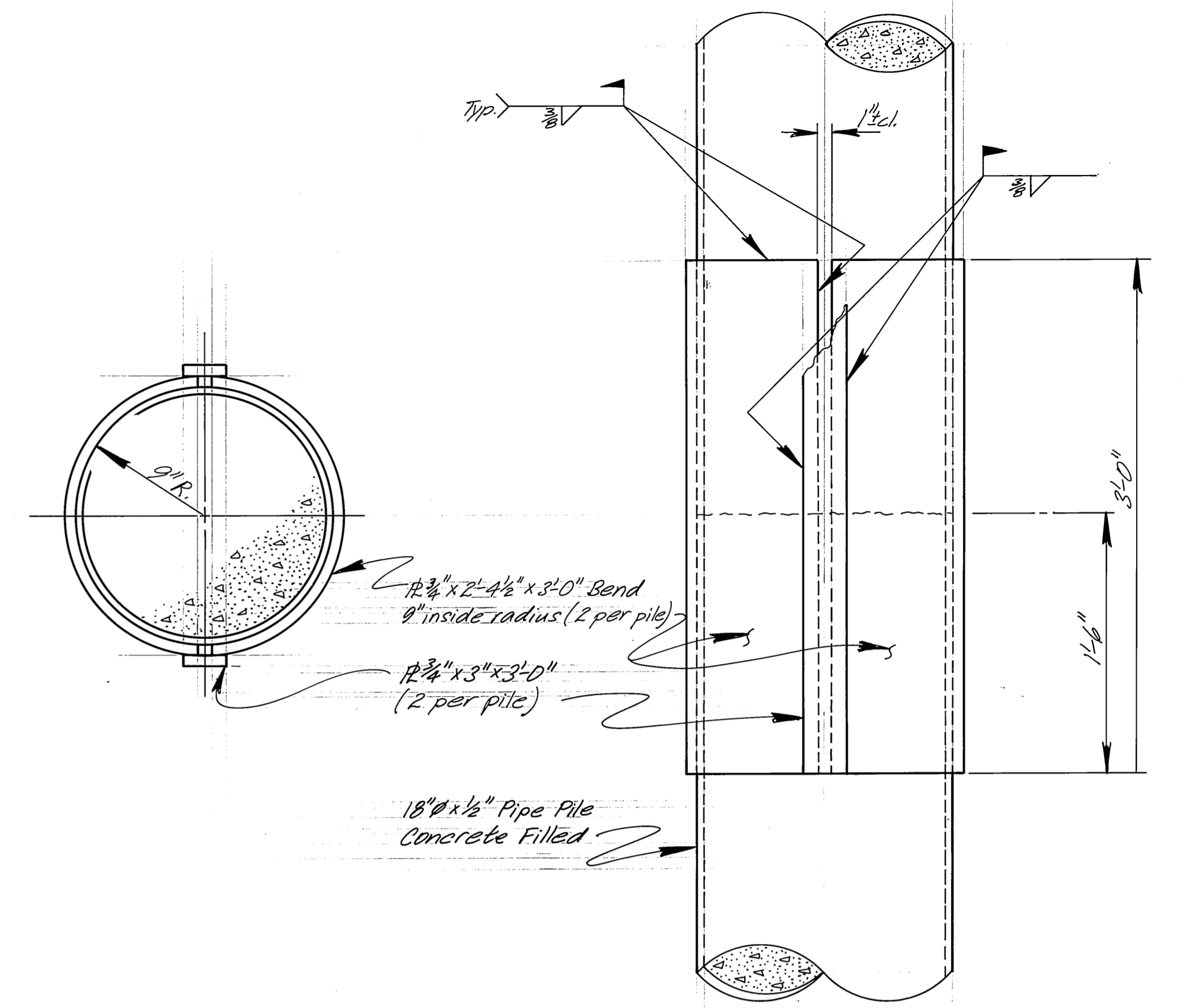
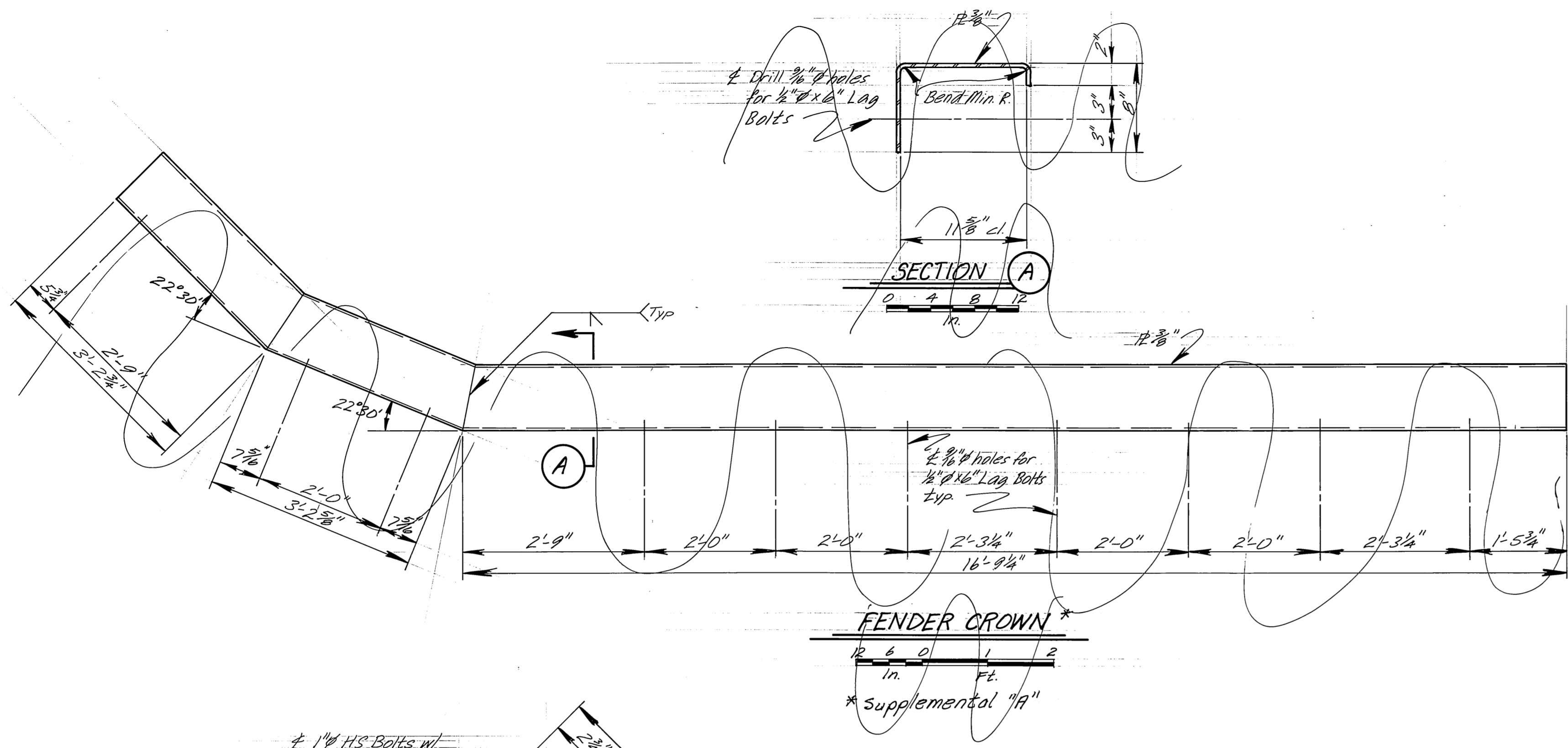
SECTION (C)

* Supplemental "A"

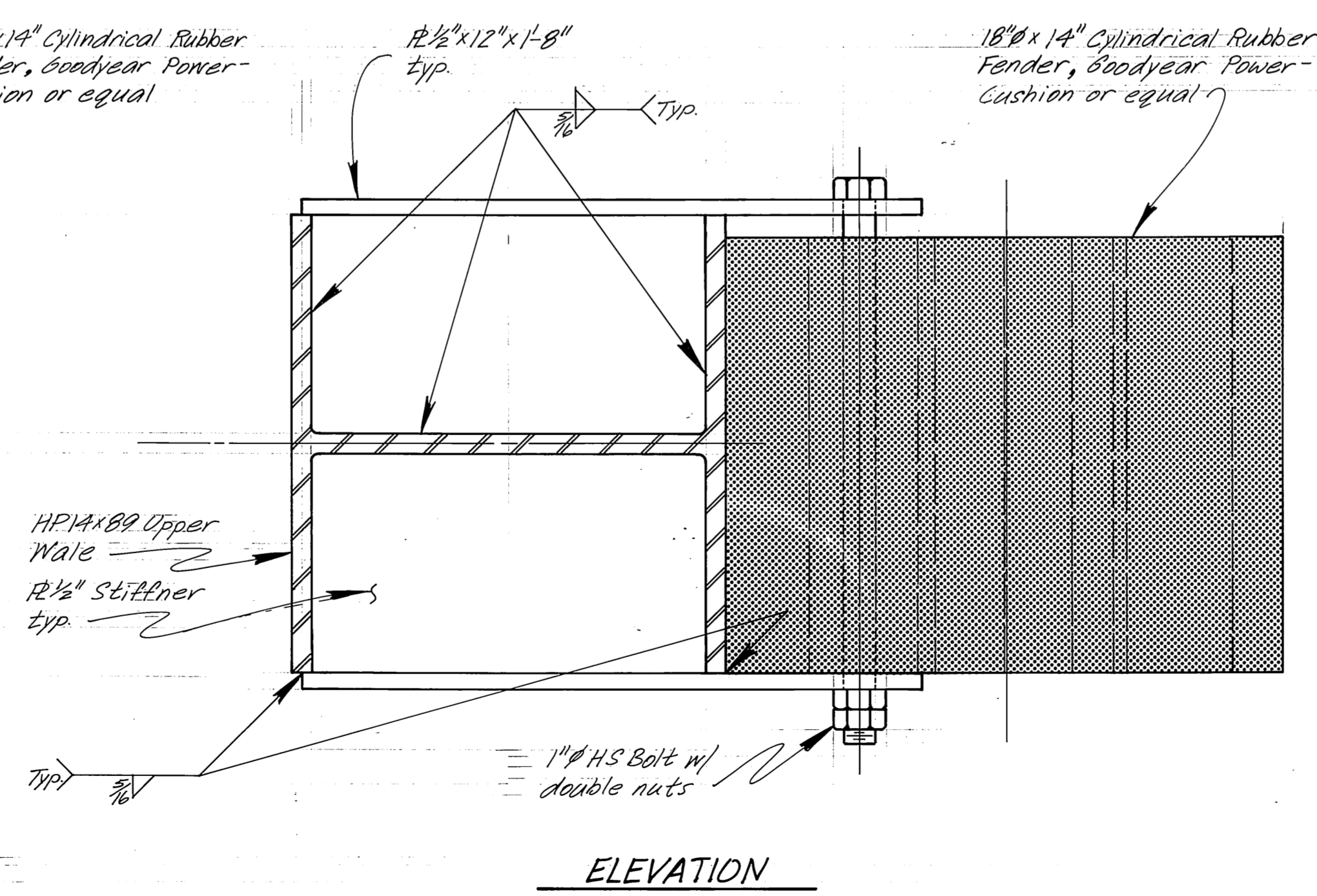
AS-BUILT 1-14-85

- Notes:
- Estimated weight of steel = 11,200#
 - Approx. 6-3' ALBPA timber req'd
 - Should Supplement "A" not be awarded, install 4x12x30'-0" timbers over ea. HP14x89 exterior flange. Secure with 3/4" φ A307 bolts thru flanges @ 3'-0" c/c, staggered and csk.

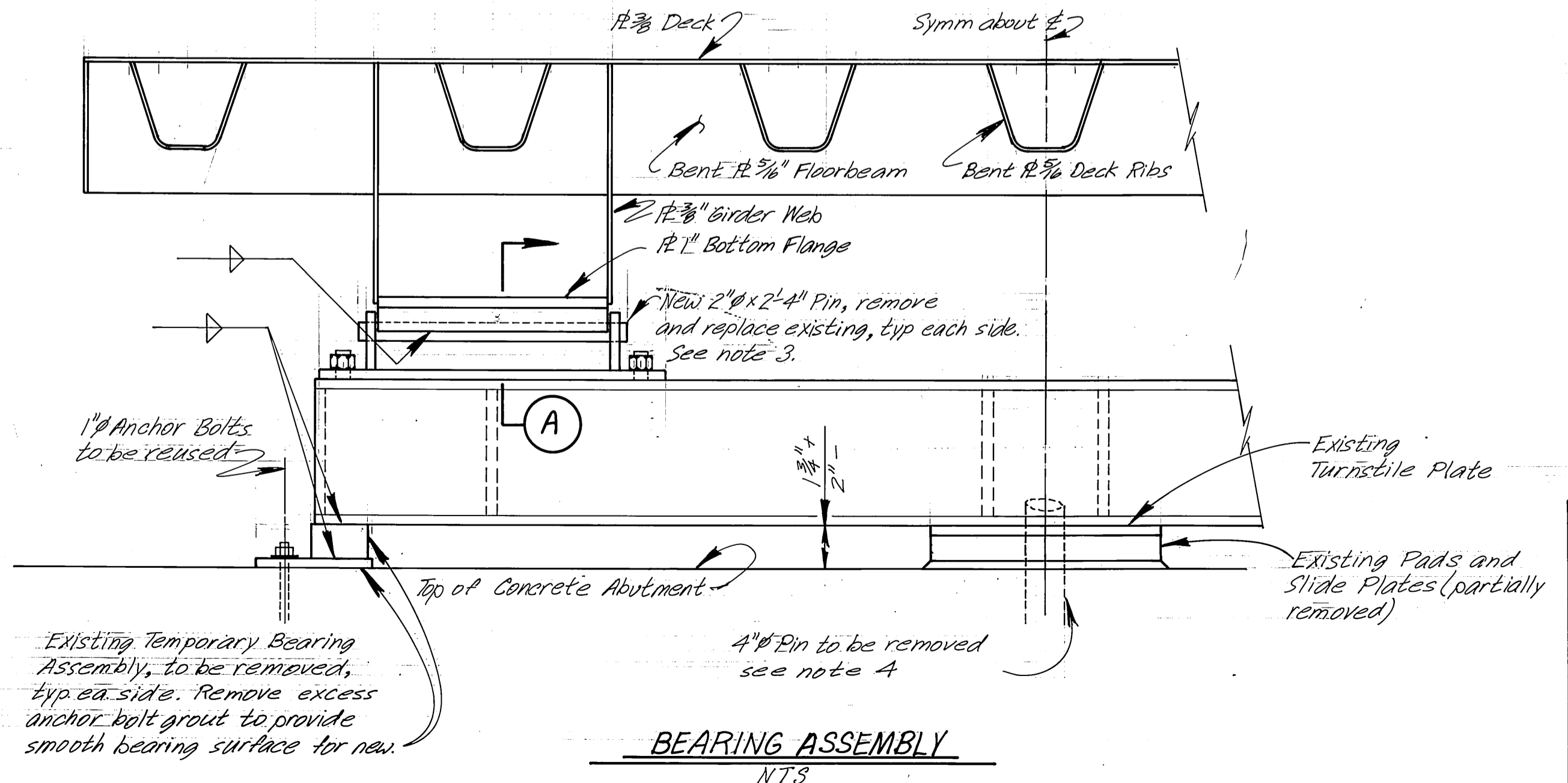
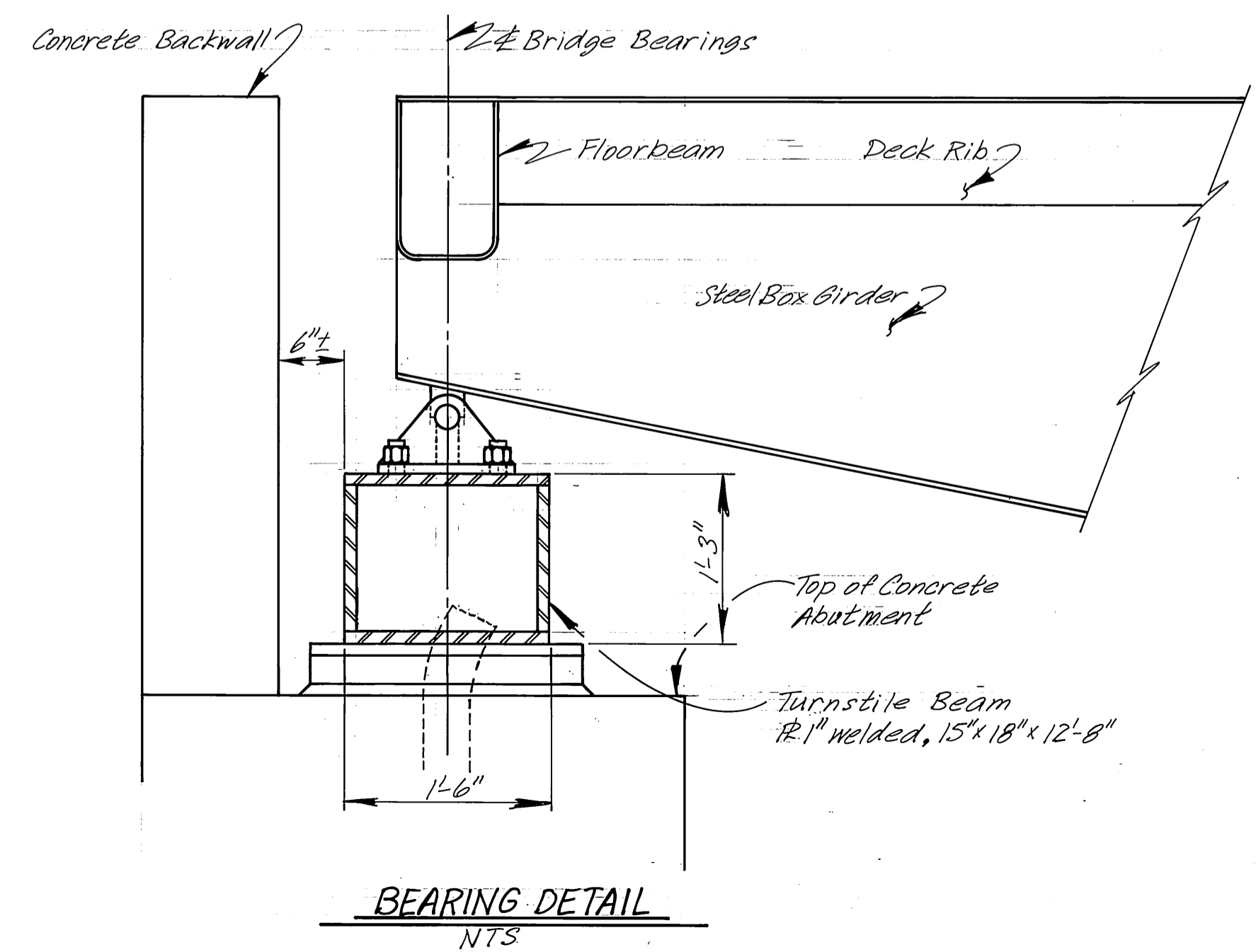
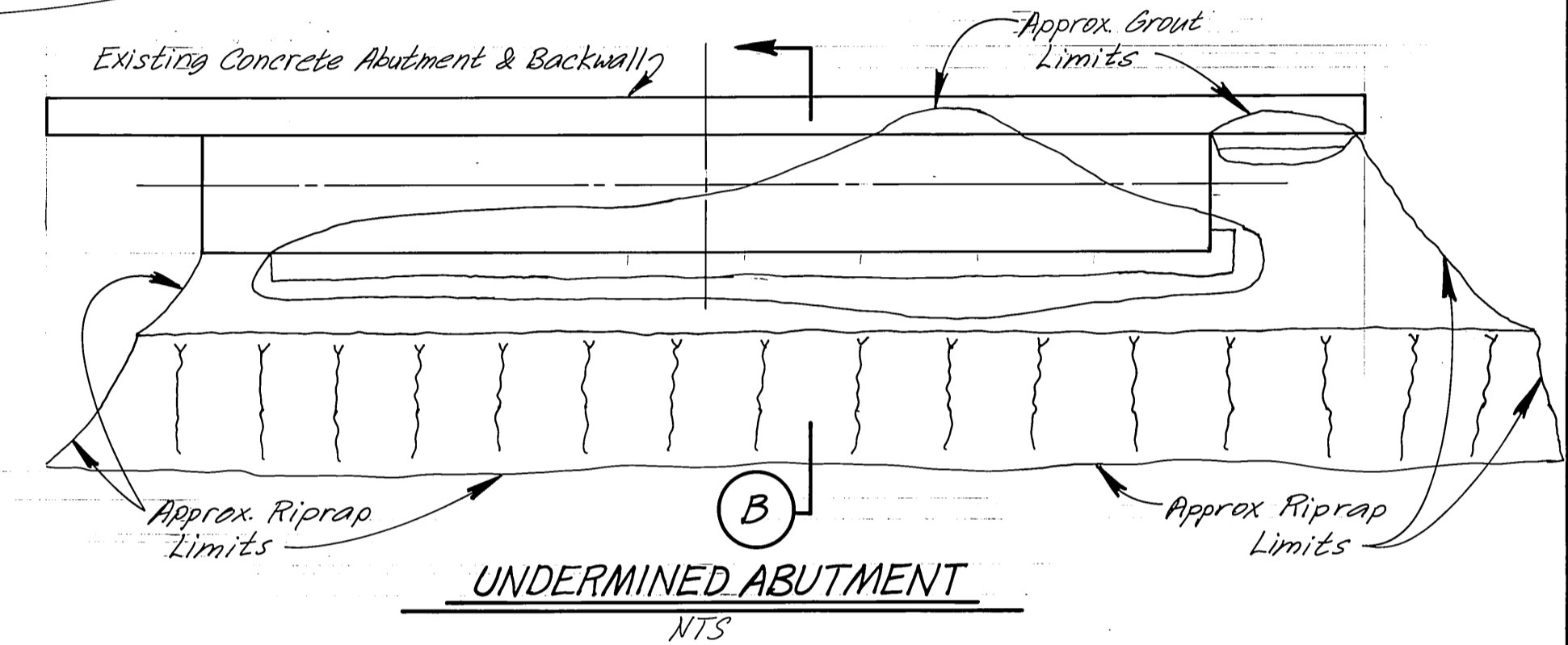
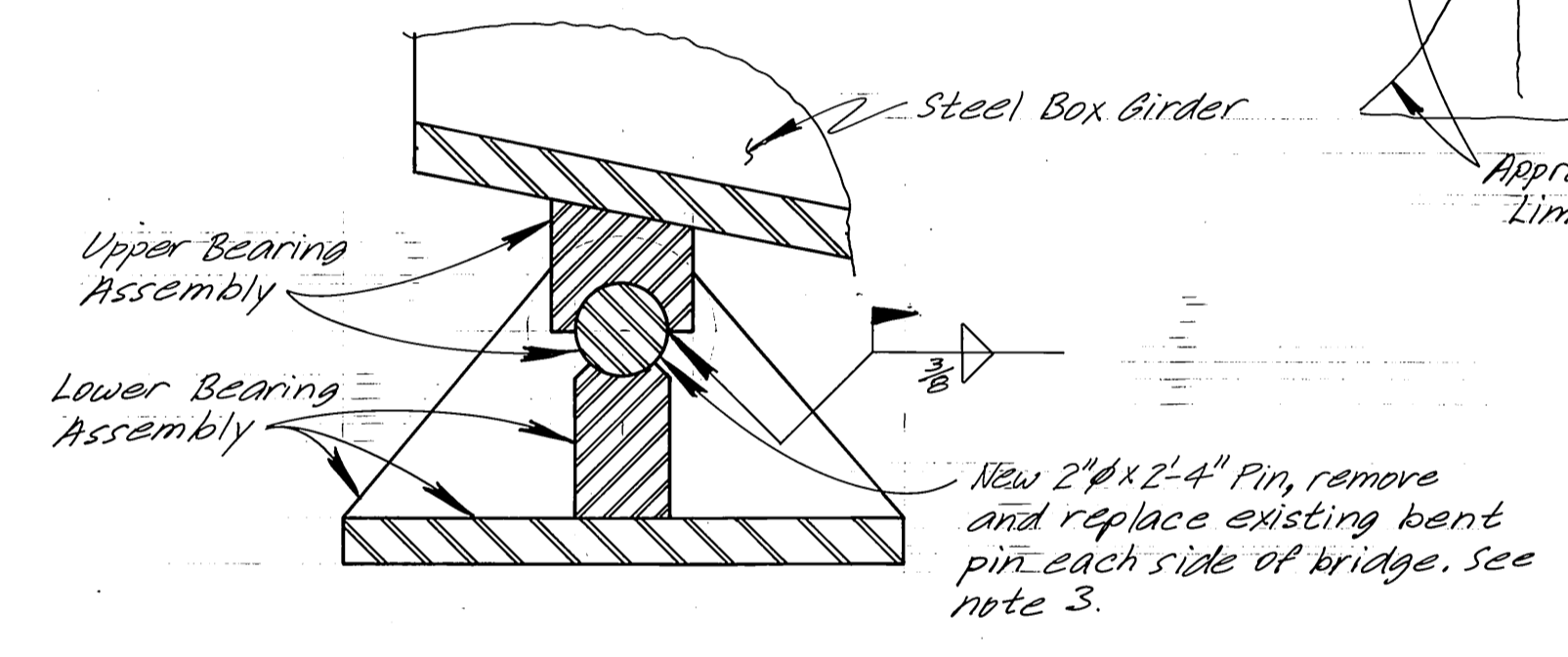
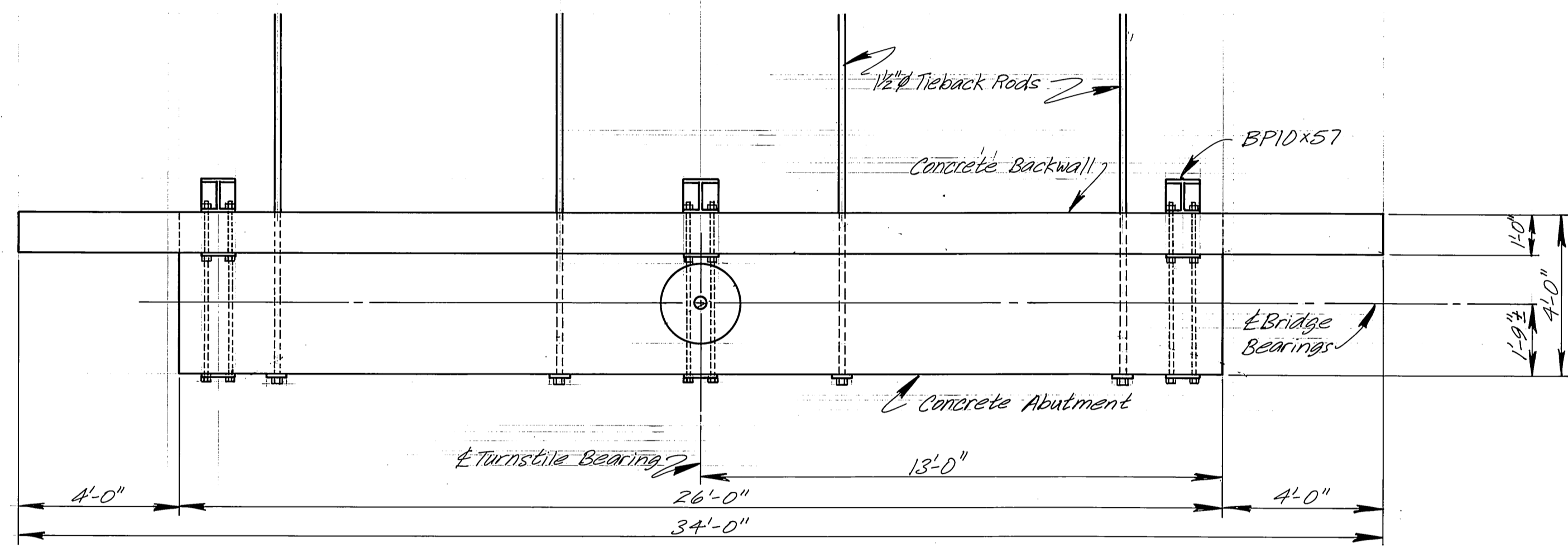
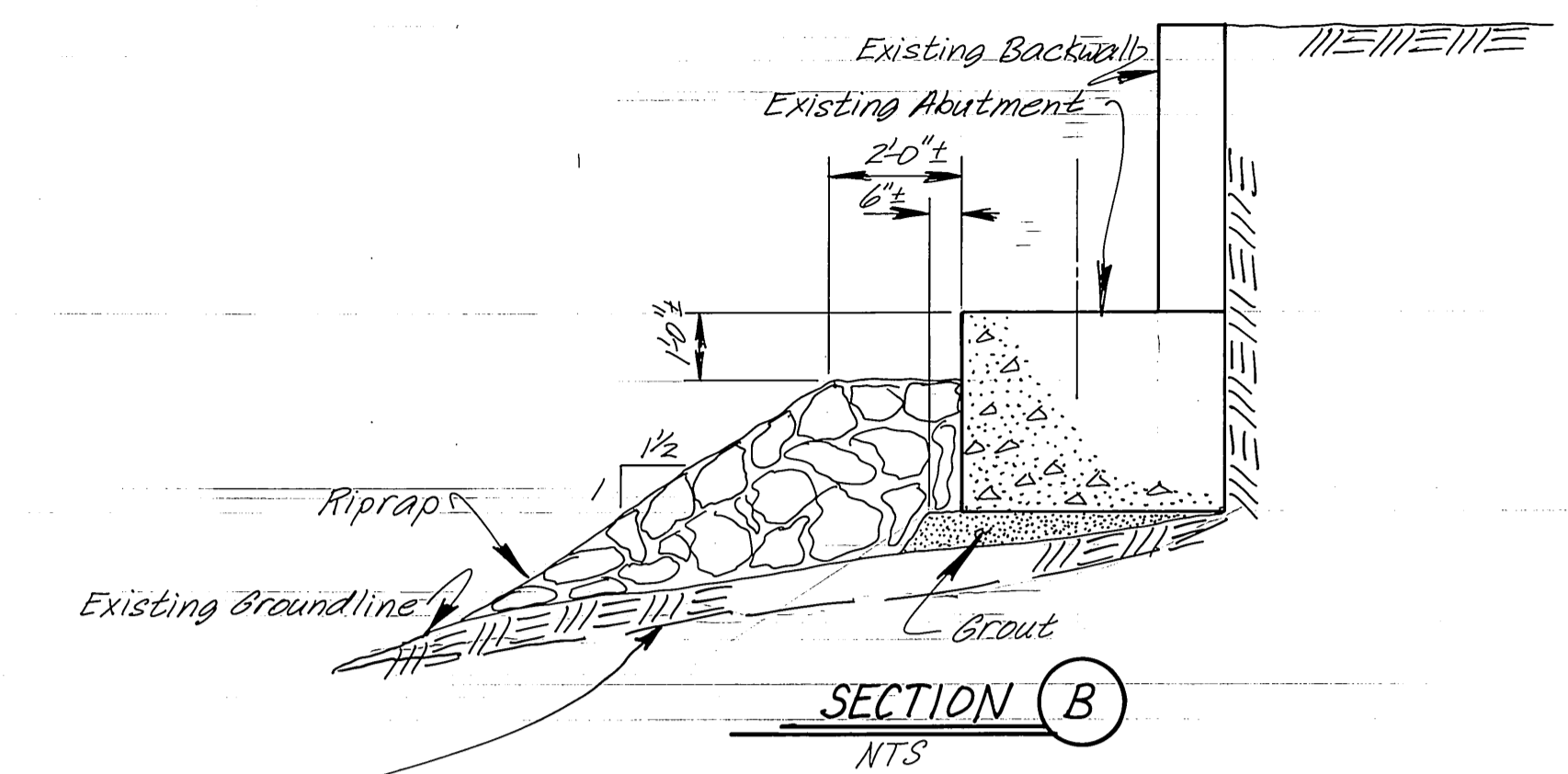
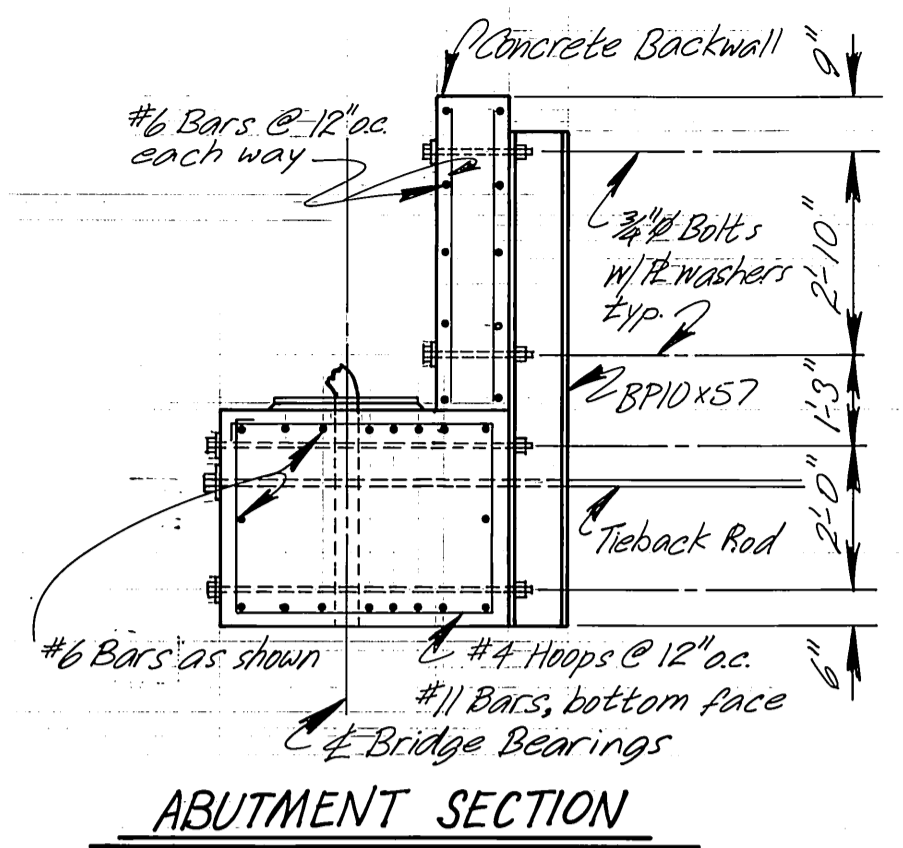
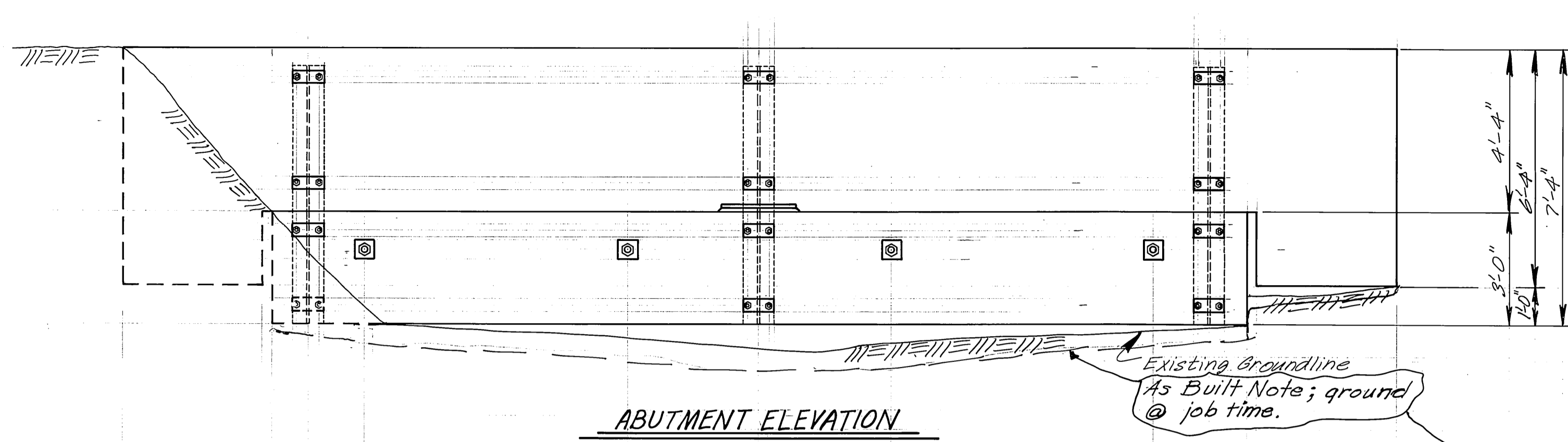
1/22/85		DO NOT SCALE THIS DRAWING - USE DIMENSIONS	
STAMP		STATE OF ALASKA	
		DEPARTMENT OF TRANSPORTATION AND PUBLIC FACILITIES	
		Alaska	
Hoanah		FENDER PLAN & ELEVATION	
DESIGNED LVB	CHECKED JS	DRAWN LVB	DATE 10/84
PROJECT NUMBER X70006	SHEET 3		OF 6



AS BUILT NOTE: Supplement "A" not awarded. 18" O.D. x 9" I.D. rubber fender substituted.



V22/B5	AS BUILT 1-14-86		
STAMP	DO NOT SCALE THIS DRAWING - USE DIMENSIONS		
	STATE OF ALASKA		
	DEPARTMENT OF TRANSPORTATION AND PUBLIC FACILITIES		
	Hoonah	Alaska	
MISC. DETAILS			
DESIGNED LJB	CHECKED JS	DRAWN LJB	DATE 10/84
PROJECT NUMBER X70006	SHEET 4		OF 6



As Built Note: By job time too much erosion had occurred to use grout, therefore forms were built and concrete was poured.

- Notes:**
- 1. Grout for Abutment underpinning shall be **Class A Concrete** cement (1 part), clean concrete sand (3 parts) and water as req'd to permit packing and shaping. Grout shall be tightly packed under abutment to provide full bearing. Protect grout from erosion for 24 hours (Approx. 22 CY)
 - 2. Riprap shall be rock, 50" min 200" max, stacked tightly to dimensions shown. Riprap may be obtained from eroded riprap beyond toe of Abutment All. (Approx 20 CY)
 - 3. Contractor may propose heat straightening and reattachment procedure for approval of the Engineer.
 - 4. Remove existing Turnstile Bearing pads, slide plates and Temporary Bearing Assembly. Cut existing 4"Ø Bearing Pin below level of 2'-0"Ø Turnstile Plate.

1/22/85	AS BUILT # 1-14-86		
STAMP	DO NOT SCALE THIS DRAWING - USE DIMENSIONS		
	STATE OF ALASKA		
	DEPARTMENT OF TRANSPORTATION AND PUBLIC FACILITIES		
	Hoonah =		Alaska
	AS-BUILT ABUTMENT & BRIDGE BEARINGS		
DESIGNED <u>US</u>	CHECKED <u>BS</u>	DRAWN <u>LVB</u>	DATE <u>12/84</u>
PROJECT NUMBER <u>X70006</u>	SHEET <u>5</u> OF <u>6</u>		
12-21-84			

