

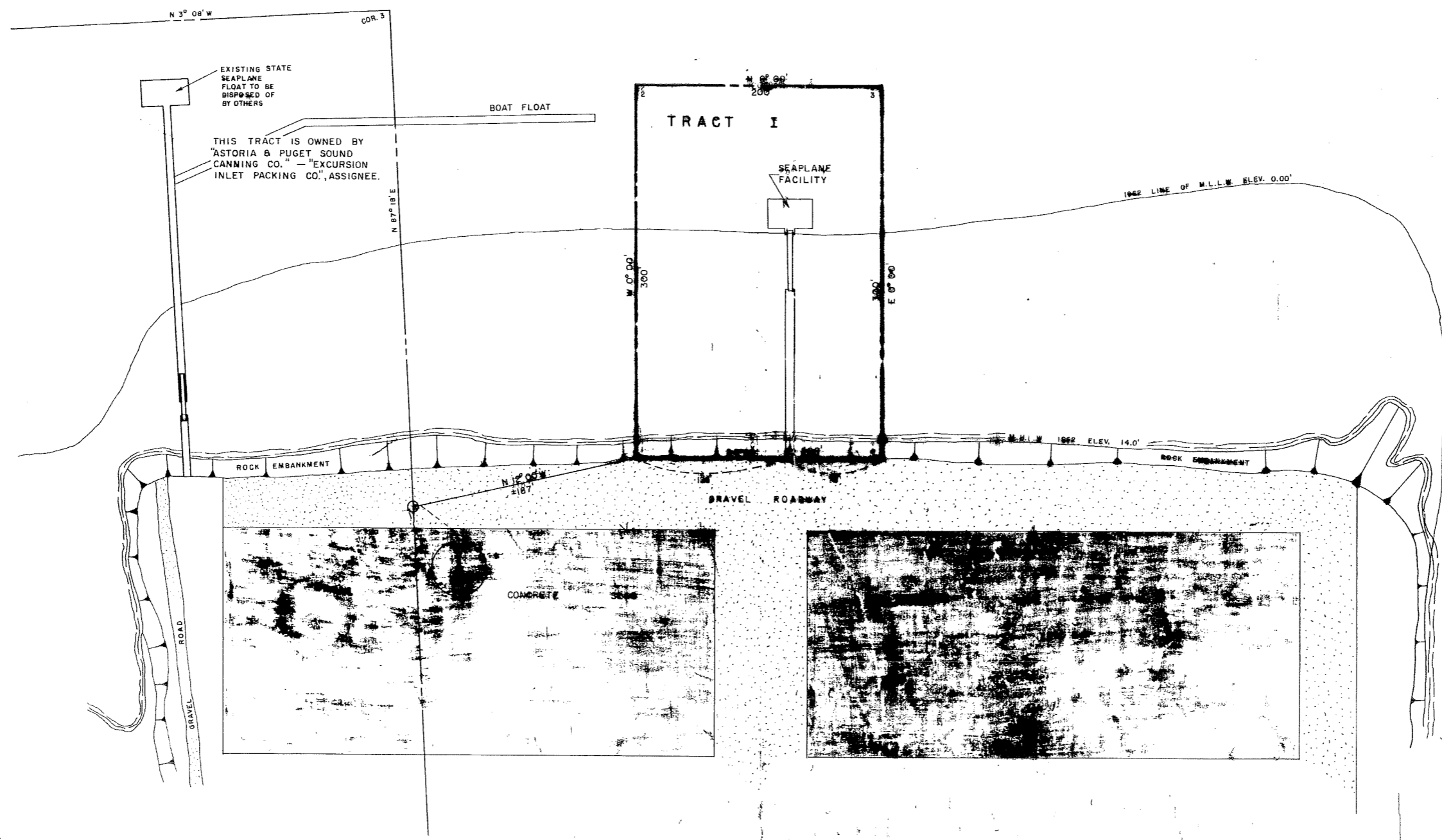
67923

PROPERTY STATUS

TRACT I
INTER-AGENCY LAND MANAGEMENT TRANSFER
GRANTED FROM A.D.L. 7/8/85, A.D.L. 27054, A.D.A. 10466.
THIS TRACT CONTAINS 1.6 ACRES, MORE OR LESS.

EXCURSION

INLET

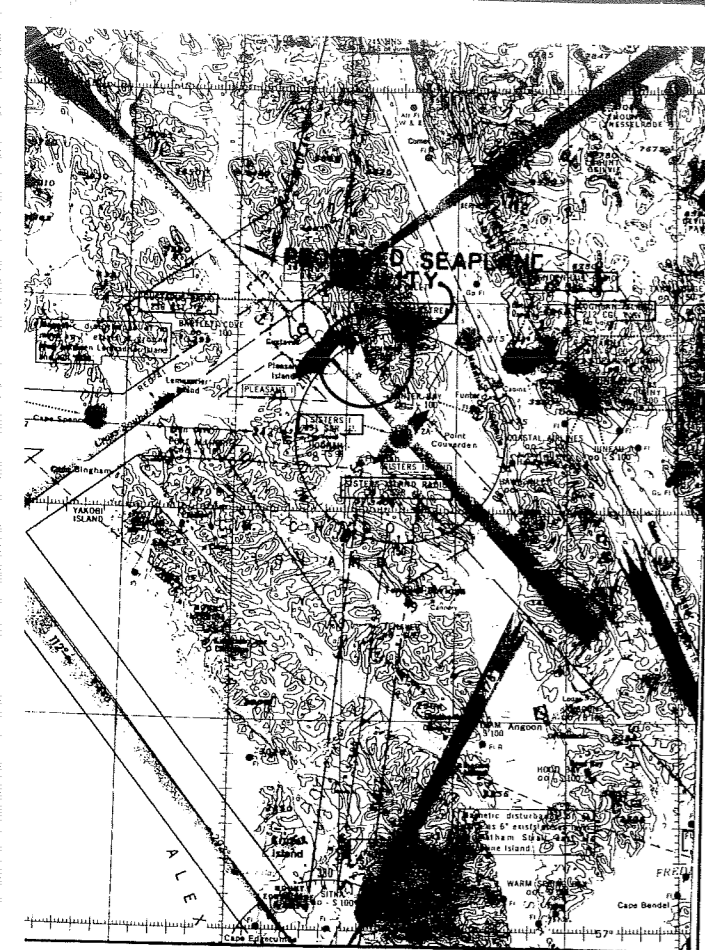


NOTES

1. ALL BEARINGS TRUE.
2. THIS DRAWING COMPILED FROM ALASKA TIDELANDS SURVEY # 04.

STATE OF ALASKA
DEPARTMENT OF PUBLIC LANDS
DIVISION OF AVALANCHES
MILE 100.4
PROPERTY PLAN

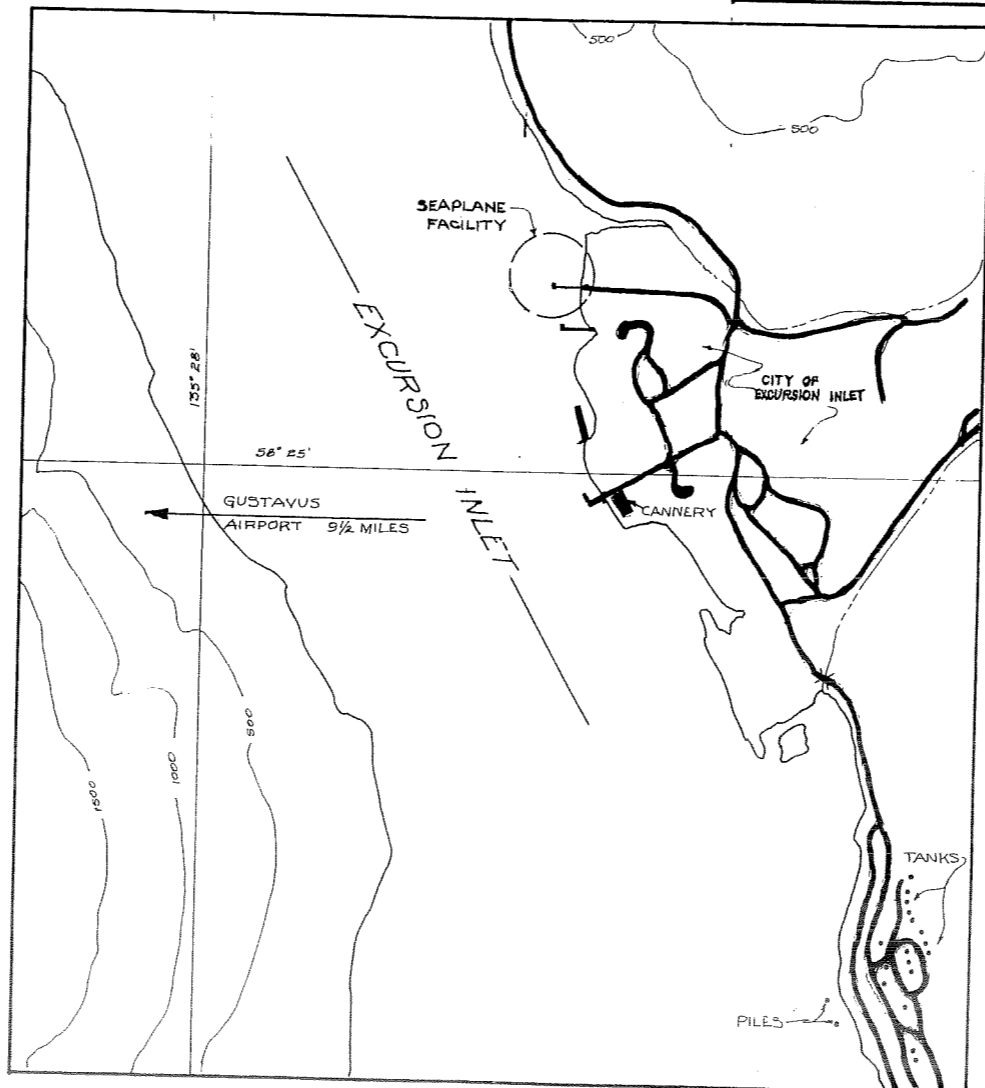
John S. [Signature]



VICINITY MAP
SCALE 1" = 16 MILES

INDEX TO PLANS	
TITLE SHEET.....	1
INDEX, CONST, QUAN, LOCATION & VICINITY MAPS.....	2
MASTER PLAN.....	3
FLOAT ASSEMBLY PLAN.....	4
APPROACH STRUCTURE.....	5
GANGWAY & DETAILS.....	6
TYPICAL SECTIONS & DETAILS.....	7

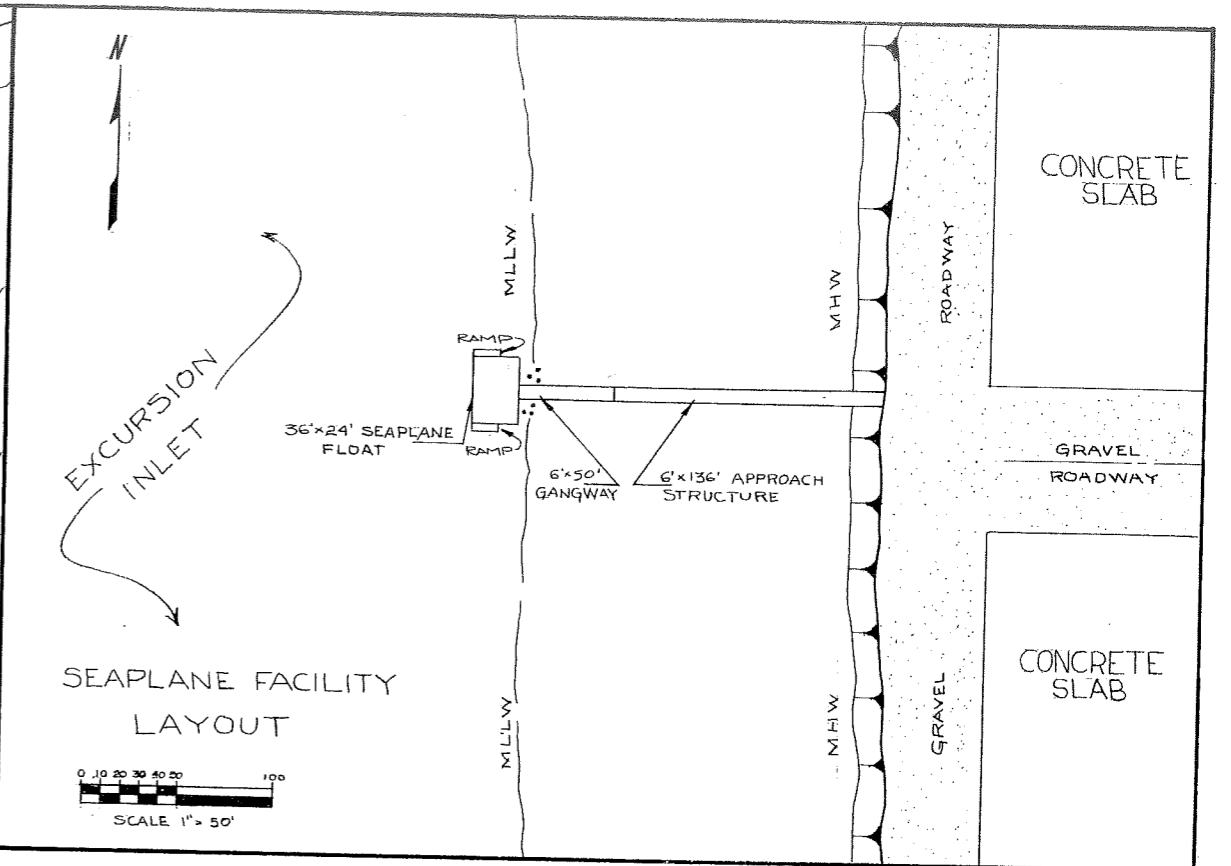
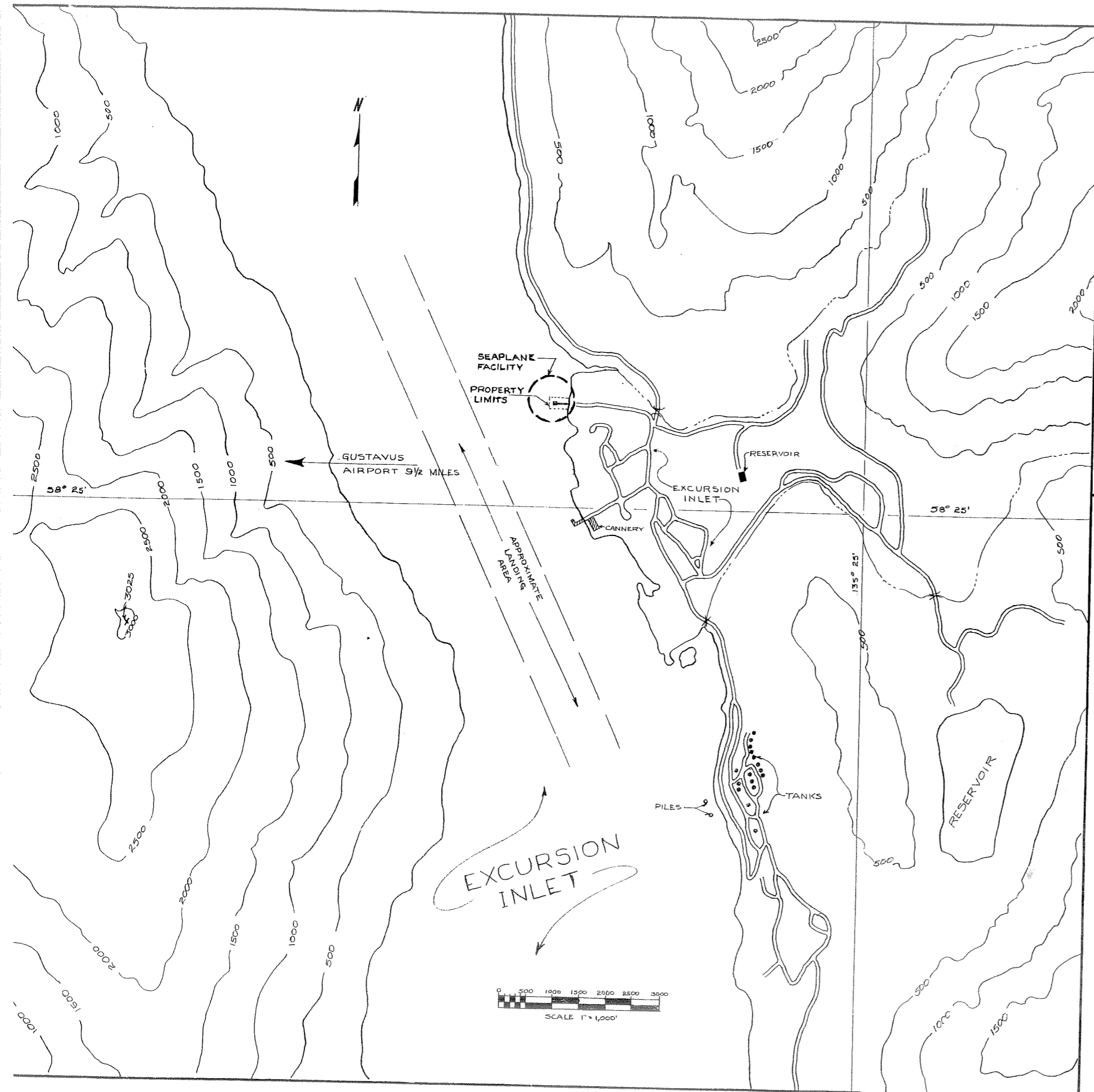
ACTUAL CONSTRUCTION QUANTITIES				
NO	ITEM	SPEC NO	QUANTITY	UNIT
1.	APPROACH STRUCTURE	1.	816	SQ. FT.
2.	GANGWAY	2.	1	EACH.
3.	SEAPLANE FLOAT	3.	933	SQ. FT.
4.	DOLPHINS	4.	2	EACH.



LOCATION MAP
SCALE 1" = 1000'

BY		DATE	CHANGE	REVISIONS
WPM		7/16/66	AS BUILT	
WPM		11/23/65	INCREASED SEAPLANE FLOAT SQ FOOTAGE	

STATE OF ALASKA DEPARTMENT OF PUBLIC WORKS DIVISION OF AVIATION	
EXCURSION INLET SEAPLANE FACILITY INDEX, ESTIMATED CONST. QUAN., LOCATION & VICINITY MAPS	
APPROVED	<i>Larry L. Johnson</i> DIRECTOR
APPROVED	<i>James E. Moody</i> CHIEF ENGINEER
SCALE	1" = 16 MILES 1" = 1000'
DATE	7/9/65
SHEET 2 of 7	



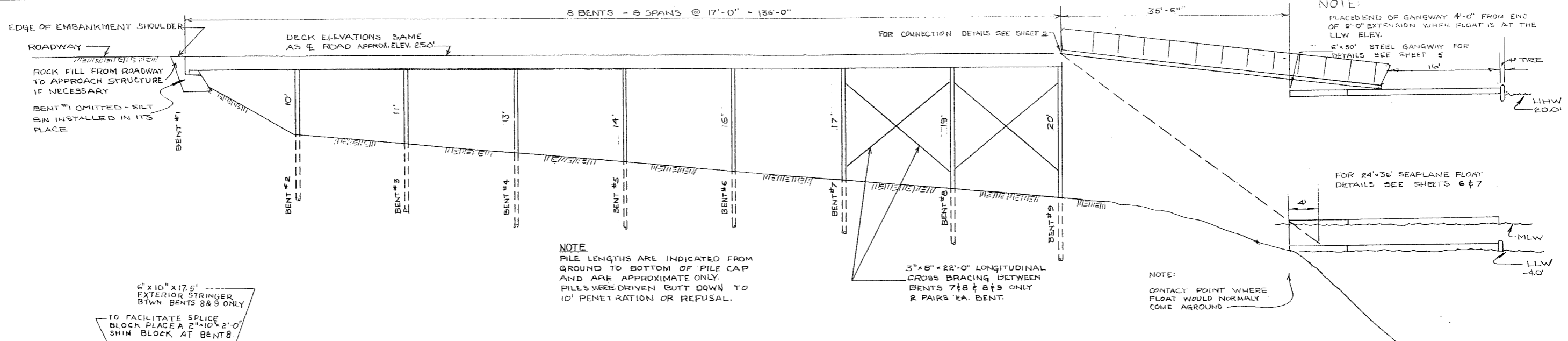
AIRPORT DATA

1. AIRPORT CLASSIFICATION - SEAPLANE FACILITY
2. NO DATA AVAILABLE FOR COMPILATION OF WIND ROSE. (PREVAILING WINDS FROM SOUTH)
3. TEMPERATURE: MEAN MAXIMUM 65°F
4. TIDE DATA:
 HIGHEST TIDE (EST) 20.00'
 MEAN HIGH HIGH TIDE 14.80'
 MEAN HIGH TIDE 14.00
 MEAN LOW TIDE 1.60
 MEAN LOW LOW TIDE 0.00'
 LOWEST TIDE (EST) -5.00'
5. LANDING SURFACE - WATER

NOTE:
 THIS DRAWING HAS BEEN COMPILED FROM ALASKA TIDELANDS SURVEY NO.97

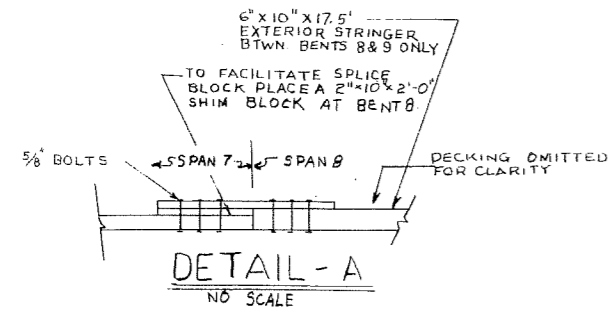
STATE OF ALASKA		DEPARTMENT OF PUBLIC WORKS	
DIVISION OF AVIATION		EXCURSION INLET SEAPLANE FACILITY	
MASTER PLAN AND LAY OUT			
APPROVED: <i>Lars L. Johnson</i>		LARS L. JOHNSON DIRECTOR	
APPROVED: <i>James E. Moody</i>		JAMES E. MOODY CHIEF ENGINEER	
SCALE: 1" = 50'	DESIGNED: J.P.S.	DRAWN: E.E.S.	SHEET 3 OF 7
1" = 1000'	CHECKED: WPM	DATE: 7/9/65	

BY	DATE	CHANGE
WPM	7/6/65	AS - BUILT
WPM	7/19/65	ADDED DISPOSAL NOTE TO EXISTING FACILITIES.
		REVISIONS



APPROACH STRUCTURE PILING PROFILE

SCALE 1/8" = 1'-0"



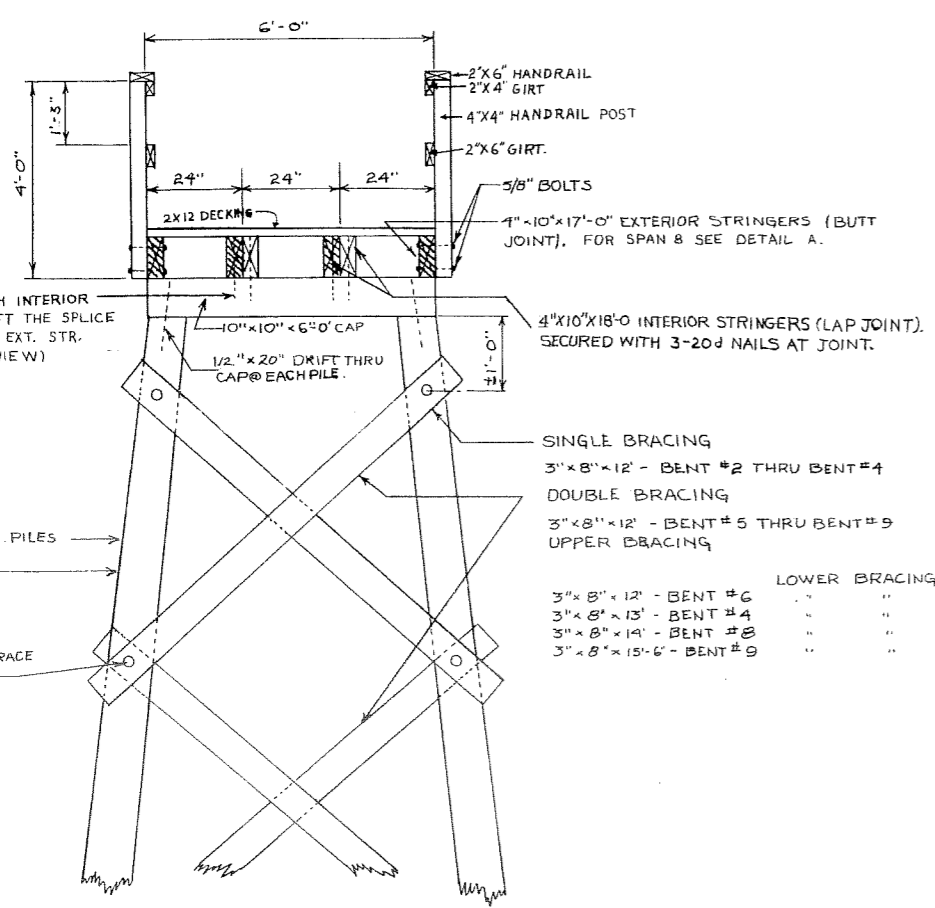
MATERIALS		
ITEM	GRADE	DRESSING
PILING	CLASS A	
BRACING	CONST	ROUGH
CAPS	"	S4S
STRINGERS	"	S4S
SPLICE BLOCK	"	"
DECKING	"	S1S
HANDRAIL POST	"	S4S
HANDRAILS	"	"
GIRTS	"	"

NOTES

ALL HARDWARE WERE GALVANIZED WITH MALLEABLE IRON WASHERS BETWEEN NUT AND WOOD SURFACES.

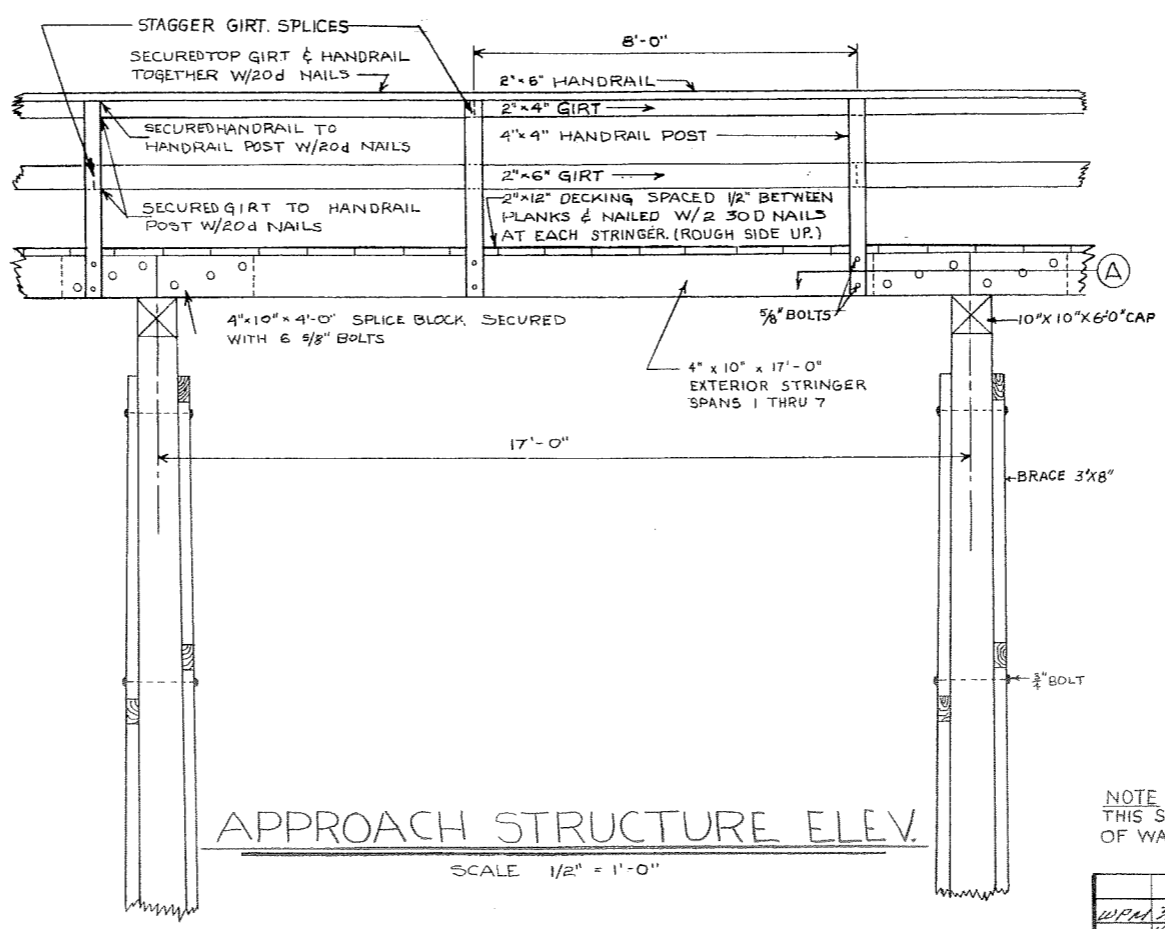
ALL BOLTS WERE MUSHROOM HEAD TYPE. BOLT HOLES WERE DRILLED 1/2" OVERSIZE. DRIFT HOLES WERE DRILLED 1/16" UNDERSIZE.

ALL HOLES WERE TREATED WITH HOT CREOSOTE OIL. ALL CREOSOTE TREATED LUMBER WAS CUT TO SIZE PRIOR TO TREATMENT.



APPROACH STRUCTURE TYPE SECTION

SCALE 1/2" = 1'-0"

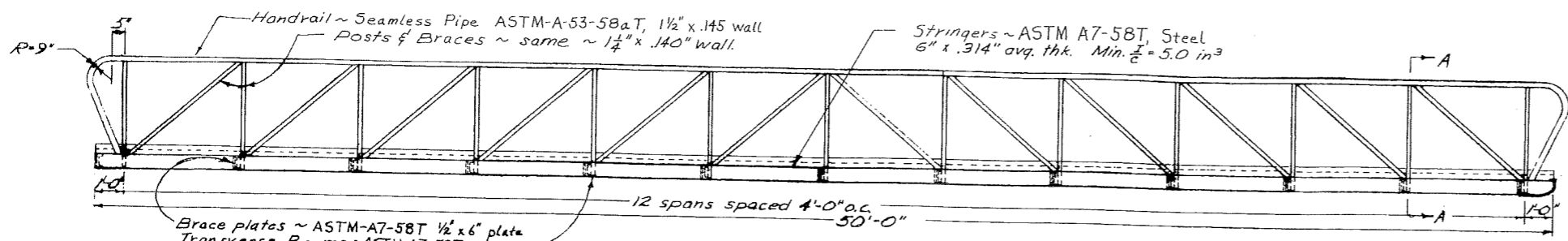


APPROACH STRUCTURE ELEV.

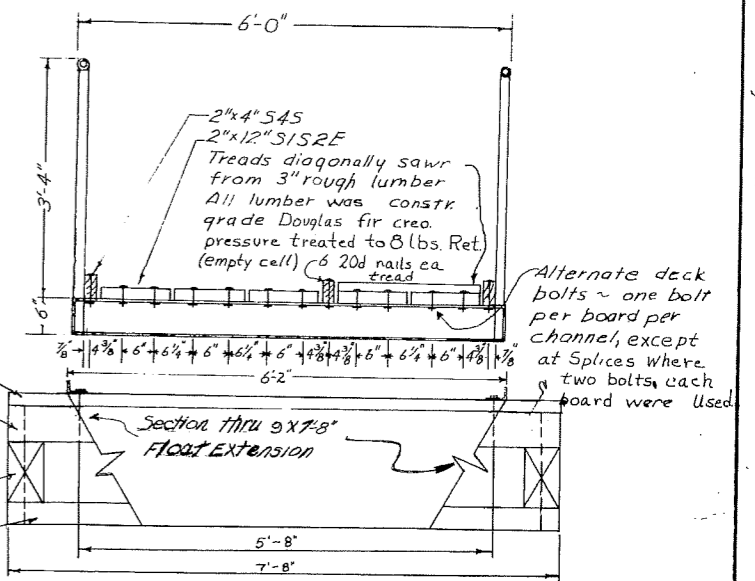
SCALE 1/2" = 1'-0"

NOTE THIS SHEET COMPILED FROM "DIVISION OF WATERS AND HARBORS" DRAWING

STATE OF ALASKA		DEPARTMENT OF PUBLIC WORKS		DIVISION OF AVIATION	
EXCURSION INLET SEAPLANE FACILITY					
APPROACH STRUCTURE					
APPROVED	<i>Lars L. Johnson</i>		DIRECTOR		
APPROVED	<i>James E. Moody</i>		CHIEF ENGINEER		
SCALE:	DESIGNED: J.P.S.	DRAWN: E.E.S.	SHEET 4 OF 7		
AS NOTED	CHECKED: WPA	DATE: 7/9/85			
BY	DATE	CHANGE	REVISIONS		



HANDRAIL, STRINGER, TRANSVERSE BEAM & BRACE LAYOUT
Scale 3/8" to 1'-0"

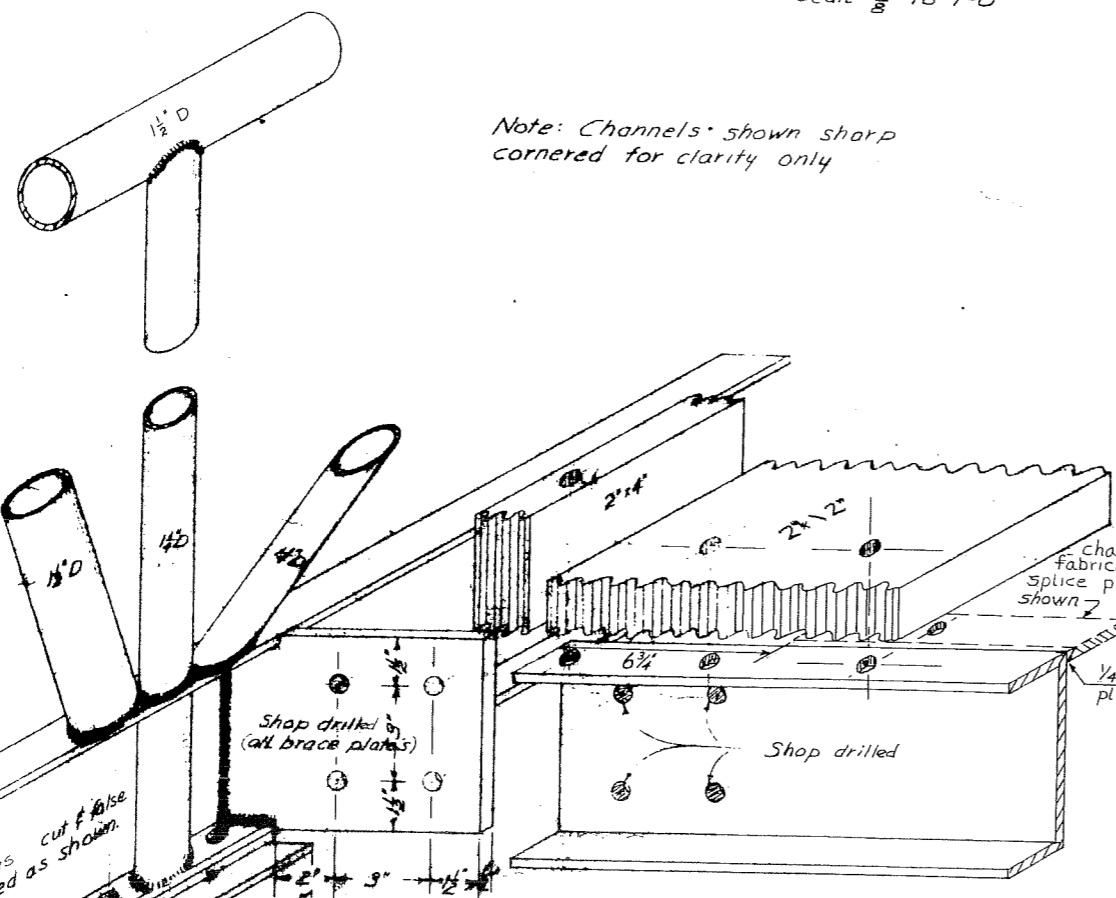


Section A-A
Scale 3/4" to 1'-0"

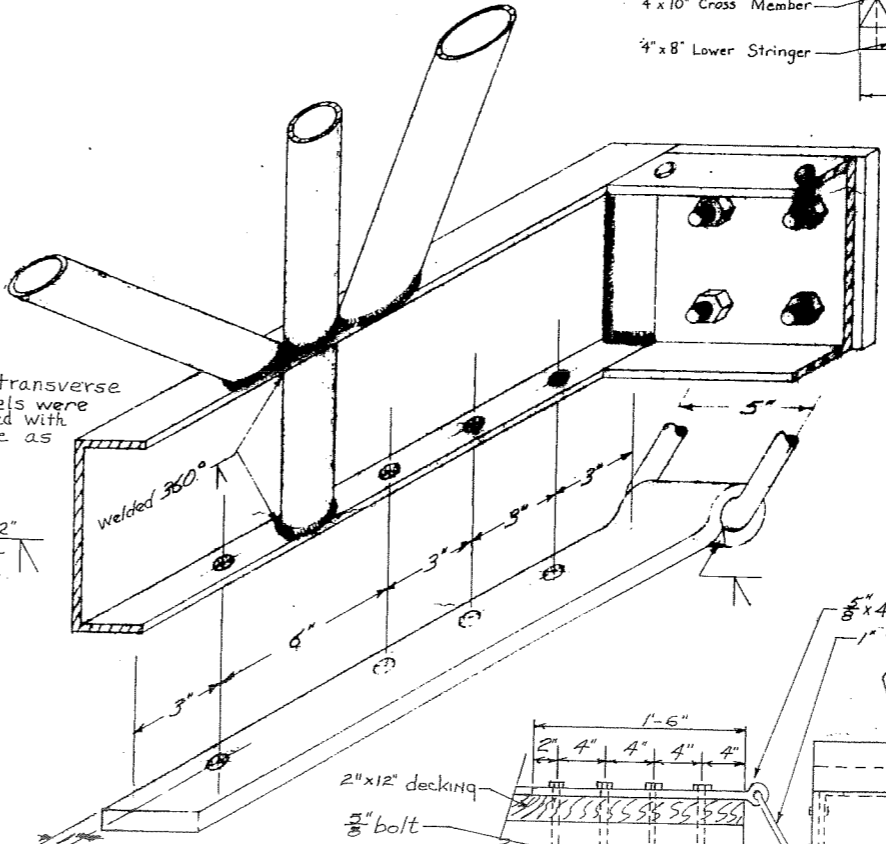
Notes:
Hardware
All steel to steel connections were made using 5/8" diameter hex head steel machine bolts.
All wood to steel connections were made using 3/8" diameter mushroom headed steel bolts.
Steel rub shoe connections were made using 1/2" diameter steel plow bolts.
Steel hanger straps were connected to steel channel using 1/2" diameter hex head steel bolts and to approach stringer using 3/4" diameter steel bolts as shown.

All iron and steel hardware were hot dip galvanized.
Fabrication and Assembly
All tubing members were 360° fillet welded at all contact surfaces and all brace plates were fillet welded on both sides.

No tubing or channel splices were made within middle half of truss structure.
Trusses were shop fabricated and assembled inclusive of rub shoe and trestle hanger straps.
All brace plates and connecting transverse channel holes were shop drilled true size.
Decking & deck spacers (2x4's) were drilled in field to match shop drilled holes in transverse channels & splice plates.
Turnbuckles were post tensioned to 100-150 pounds tension.
Splices were held to a minimum and where necessary were made in such a manner so as not to reduce the strength of the truss.

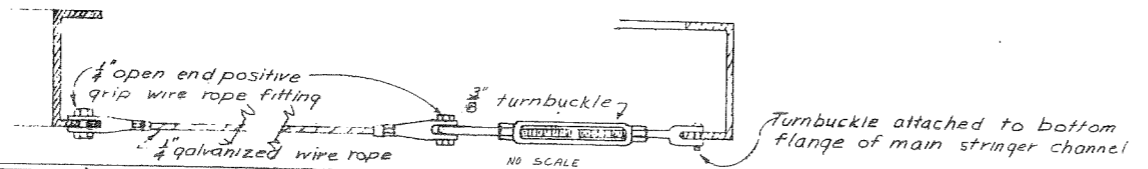


LOWER END CONSTRUCTION DETAILS
Scale 1" to 3"



UPPER END CONSTRUCTION DETAILS & APPROACH STRUCTURE TO RAMP CONNECTOR DETAIL
Scale 1" to 3" & 1/2" to 1'-0"

2"x2'-0" mild steel to rub shoe secured with 3 3/8" countersunk steel plow bolts. One was shop fabricated & assembled.

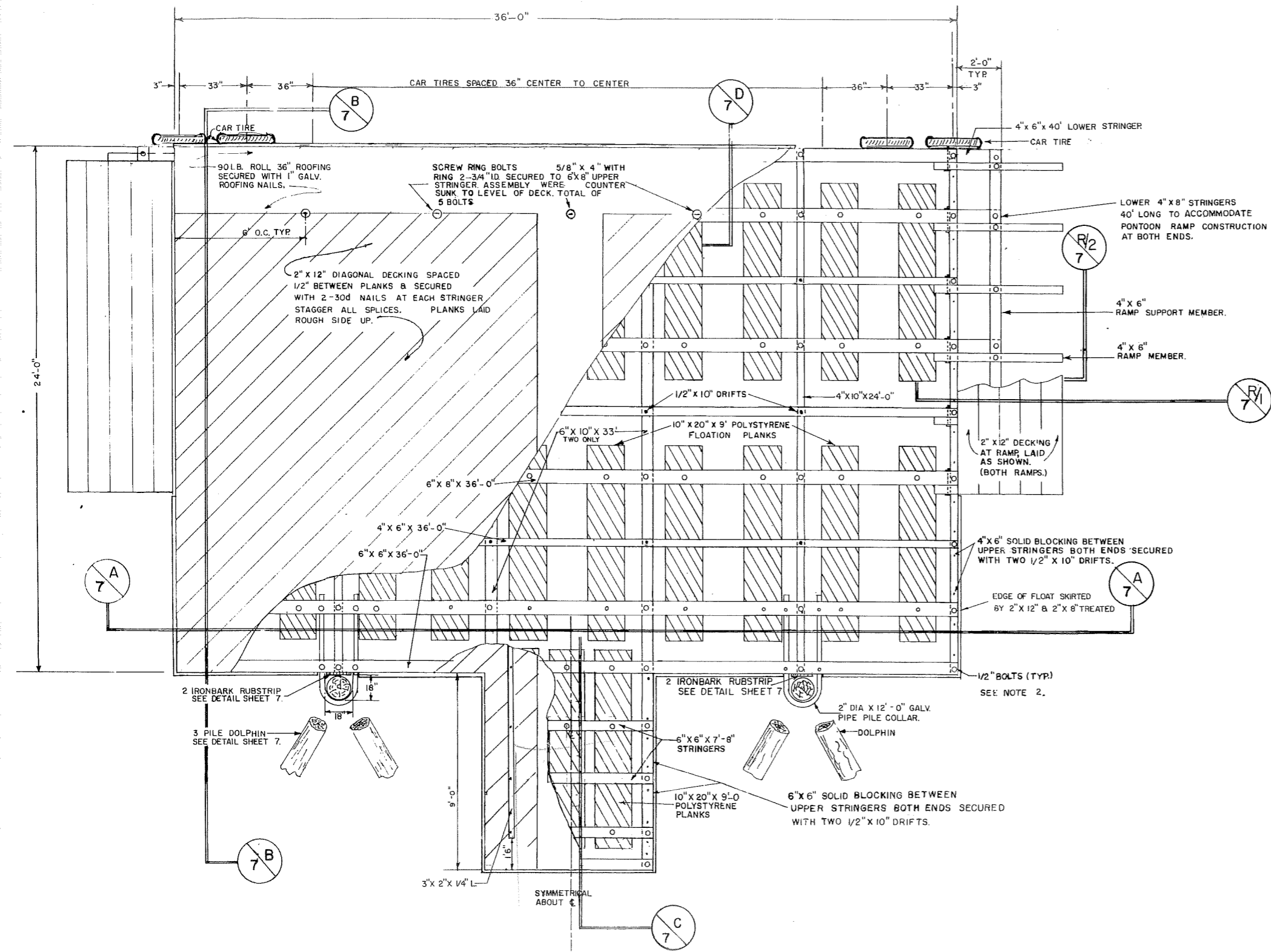


TENSION WIRE LAYOUT, CONNECTION DETAIL & DECKING SPLICE LAYOUT
Scale 1/4" to 1'-0"

9'-0"	17'-0"	20'-0"	20'-0"	21'-0"
9'-0"	17'-0"	20'-0"	20'-0"	13'-0"
9'-0"	17'-0"	17'-0"	20'-0"	21'-0"
9'-0"	17'-0"	20'-0"	20'-0"	13'-0"
9'-0"	17'-0"	20'-0"	20'-0"	13'-0"
9'-0"	17'-0"	20'-0"	20'-0"	21'-0"

THIS SHEET DRAWN FROM "DIVISION OF WATERS AND HARBORS" DRAWING DATE 6/12/63.

STATE OF ALASKA DEPARTMENT OF PUBLIC WORKS DIVISION OF AVIATION EXCURSION INLET SEAPLANE FACILITY STEEL GANGWAY CONSTRUCTION DETAILS	APPROVED: <i>Lars L. Johnson</i> LARS L. JOHNSON DIRECTOR
APPROVED: <i>James E. Moody</i> JAMES E. MOODY CHIEF ENGINEER	BY: <i>WPM</i> DATE: <i>7/6/66</i> AS-BUILT LENGTHENED SLIDE PLATE

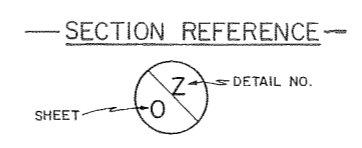


PLAN VIEW
SCALE 3/8" = 1'-0"

MATERIALS		
ITEM	GRADE	DRESSING
6 x 6 STRINGER—UPPER	CONSTRUCTION	S4S
6 x 8 STRINGER—UPPER	"	S2S
4 x 6 STRINGER—UPPER	"	S2E
6 x 10 1/2 4 x 10 CROSS MEMBER	"	ROUGH
4 x 8 STRINGER—LOWER	"	"
4 x 6 MEMBERES	"	"
2 x 12 SKIRTING	"	"
2 x 12 DECKING	"	S1S2E
2 x 4 NAILING STRIPS	"	ROUGH

- NOTE**
- ALL MEMBERS WERE FULL LENGTH EXCEPT THE 4" X 10" X 24' CROSS MEMBER AND 4" X 6" X 36' UPPER STRINGER WHICH WAS DAPPED.
 - ALL HARDWARE WERE HOT DIP GALVANIZED. A MALLEABLE WASHER WAS PLACED BETWEEN ALL NUT & WOOD SURFACES. ALL BOLTS 1/2" MUSHROOM HEAD TYPE UNLESS OTHERWISE NOTED.
 - BOLT HOLES WERE DRILLED 1/32" OVERSIZE DRIFT PIN HOLES WERE DRILLED 1/16" UNDERSIZE.
 - ALL DRILLED HOLES WERE TREATED WITH HOT CREOSOTE OIL. ALL PRESSURE TREATED CREOSOTE MATERIAL WAS CUT TO SIZE AND BOLT HOLES DRILLED PRIOR TO TREATMENT.

THIS FLOAT REMOVED & REPLACED IN 2006 UNDER PROJECT NO. 67923

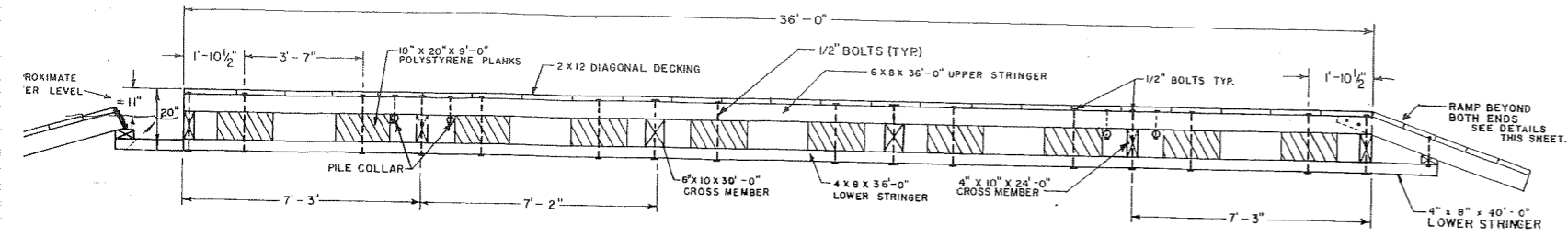


BY		DATE	CHANGE	REVISIONS
WPH	7/6/65		AS BUILT	
WPH	7/30/65		REVISED GANGWAY RAMP	
WPM	7/19/65		CHANGED 4x6" SOLID BLKS. TO 6x6" AT SEC. G.	

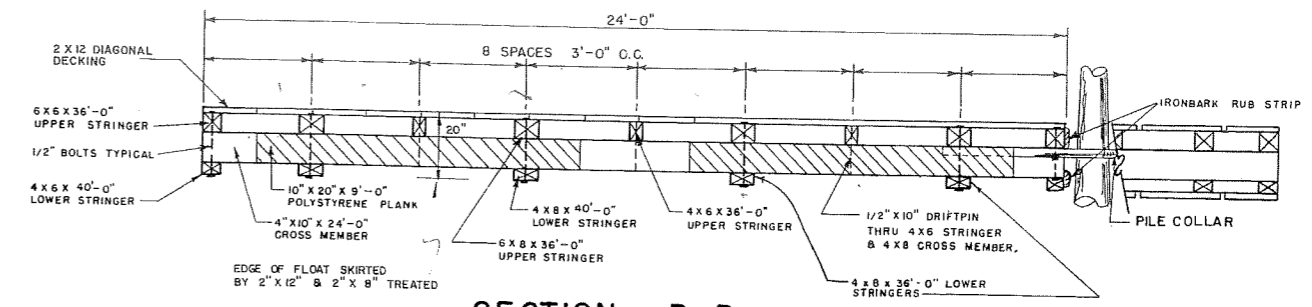
APPROVED	<i>Lars L. Johnson</i>		DIRECTOR
APPROVED	<i>James E. Moody</i>		CHIEF ENGINEER
SCALE	DESIGNED JPS	DRAWN EES	SHEET 6
3/8" = 1'-0"	CHECKED WPM	DATE 7/19/65	7

STATE OF ALASKA
DEPARTMENT OF PUBLIC WORKS
DIVISION OF AVIATION

EXCURSION INLET SEAPLANE FACILITY
36' x 24' SEAPLANE FLOAT
ASSEMBLY PLAN



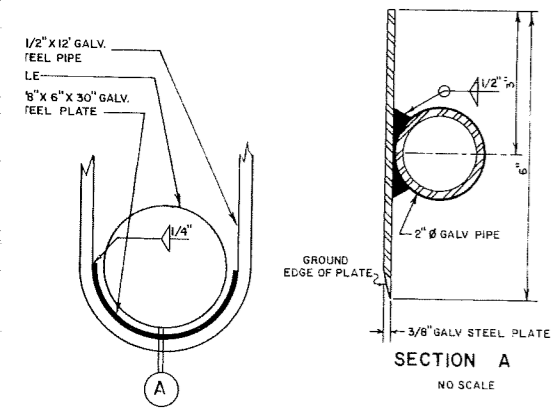
SECTION A-A
3/8" = 1'-0"



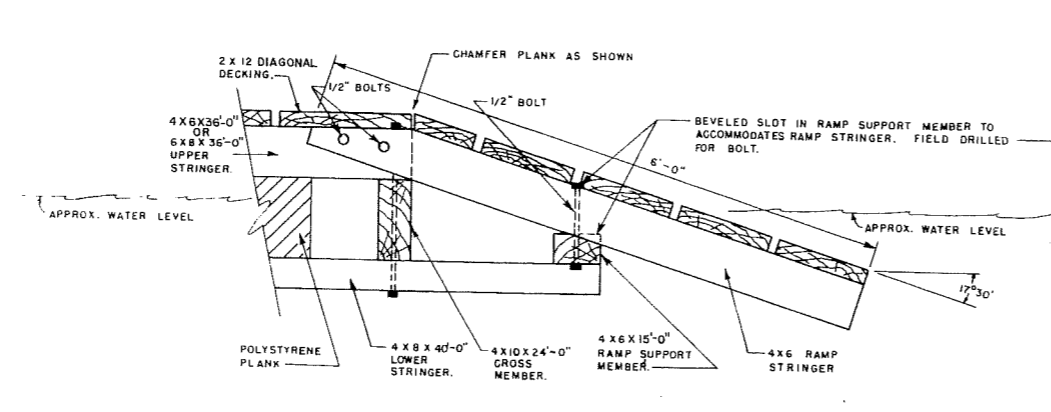
SECTION B-B
3/8" = 1'-0"

EDGE OF FLOAT SKIRTED BY 2" X 12" & 2" X 8" TREATED

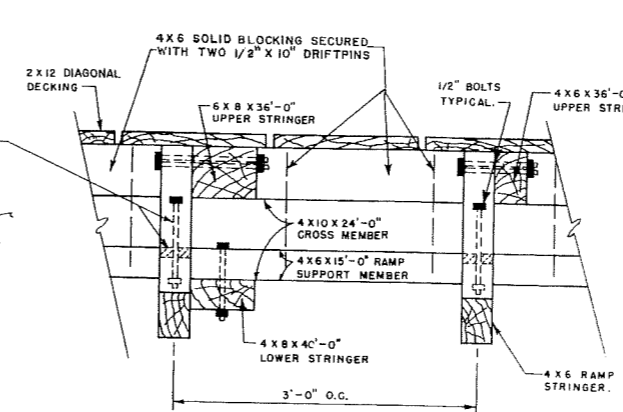
EDGE OF FLOAT SKIRTED BY 2" X 12" & 2" X 8" TREATED



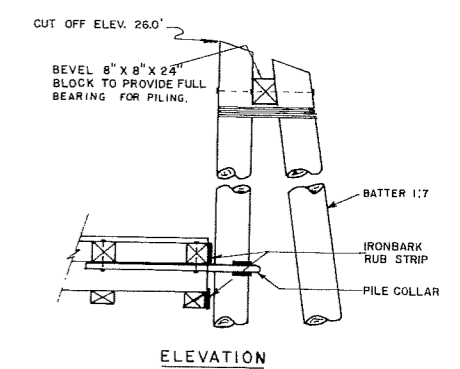
PILE COLLAR
NO SCALE



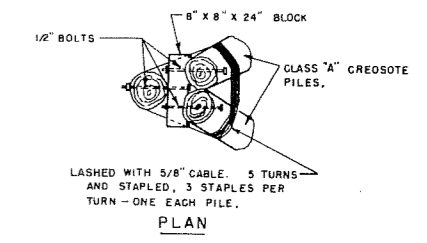
DETAIL R-1
1" = 1'-0"



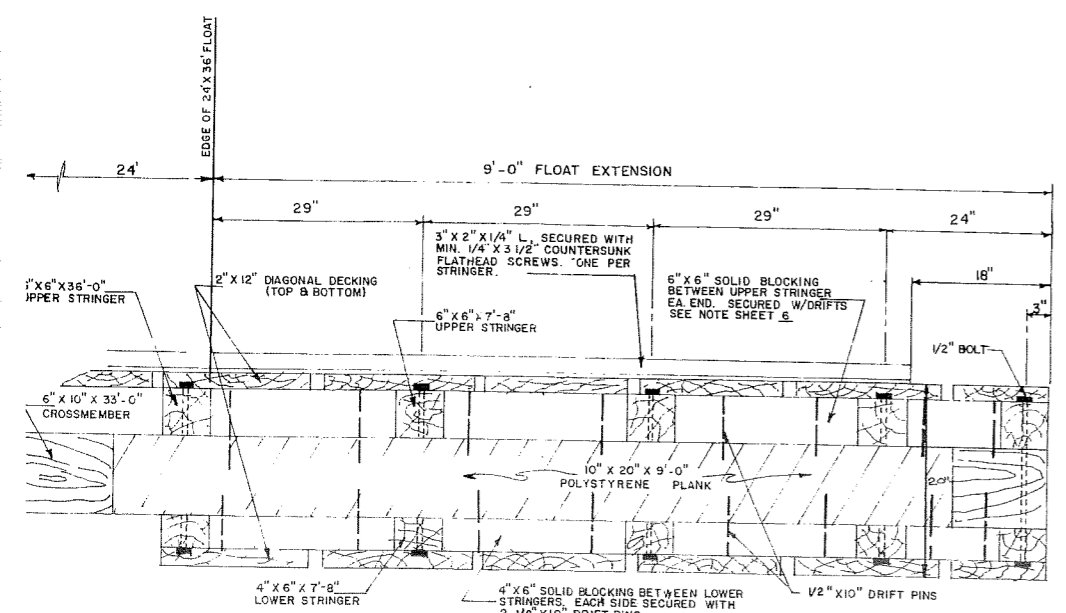
DETAIL R-2
1" = 1'-0"



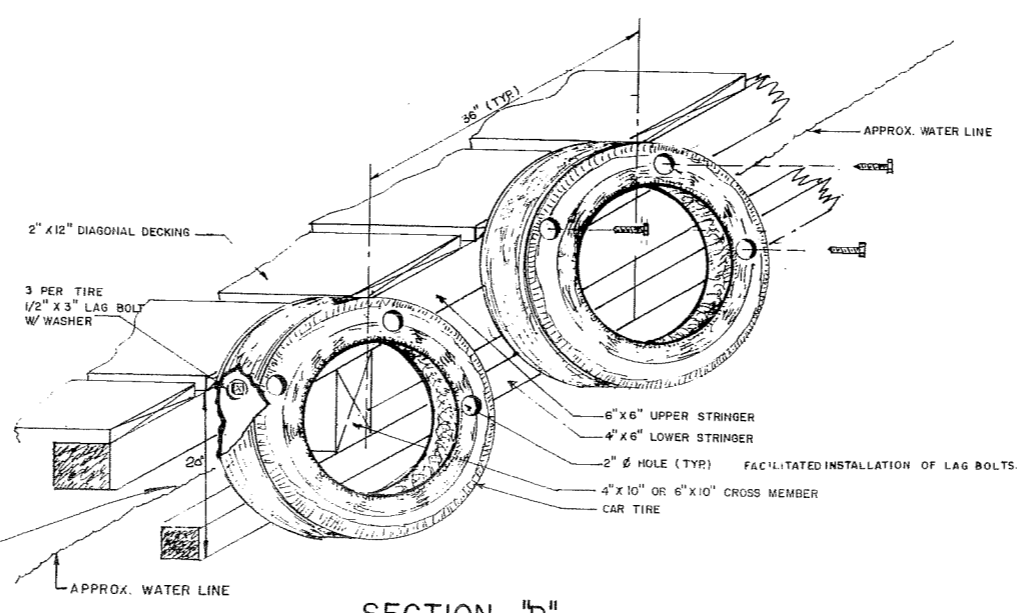
ELEVATION



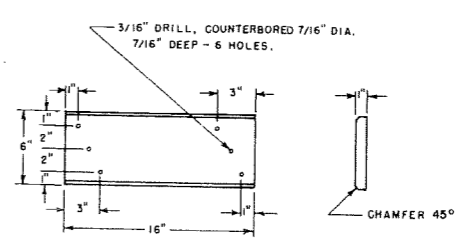
PLAN



SECTION C-C
1" = 1'-0"



SECTION D-D
NO SCALE



DETAIL IRONBARK RUB STRIP
1 1/2" = 1'-0"

DOLPHIN DETAILS
3/8" = 1'-0"

STATE OF ALASKA DEPARTMENT OF PUBLIC WORKS DIVISION OF AVIATION			
EXCURSION INLET SEAPLANE FACILITY 36' x 24' SEAPLANE FLOAT DETAILS & SECTIONS			
APPROVED	<i>Lars L. Johnson</i> LARS L. JOHNSON DIRECTOR		
APPROVED	<i>James S. Moody</i> JAMES S. MOODY CHIEF ENGINEER		
DESIGNED	JPS	DRAWN	EES
CHECKED	WPH	DATE	7/9/65
BY	DATE	CHANGE	REVISIONS
AS BUILT			
REVISED SECTIONS "C" & "D"			
SCALE	AS SHOWN		
			7 7

APPROVED	<i>Lars L. Johnson</i> LARS L. JOHNSON DIRECTOR		
APPROVED	<i>James S. Moody</i> JAMES S. MOODY CHIEF ENGINEER		
DESIGNED	JPS	DRAWN	EES
CHECKED	WPH	DATE	7/9/65
BY	DATE	CHANGE	REVISIONS
AS BUILT			
REVISED SECTIONS "C" & "D"			
SCALE	AS SHOWN		
			7 7