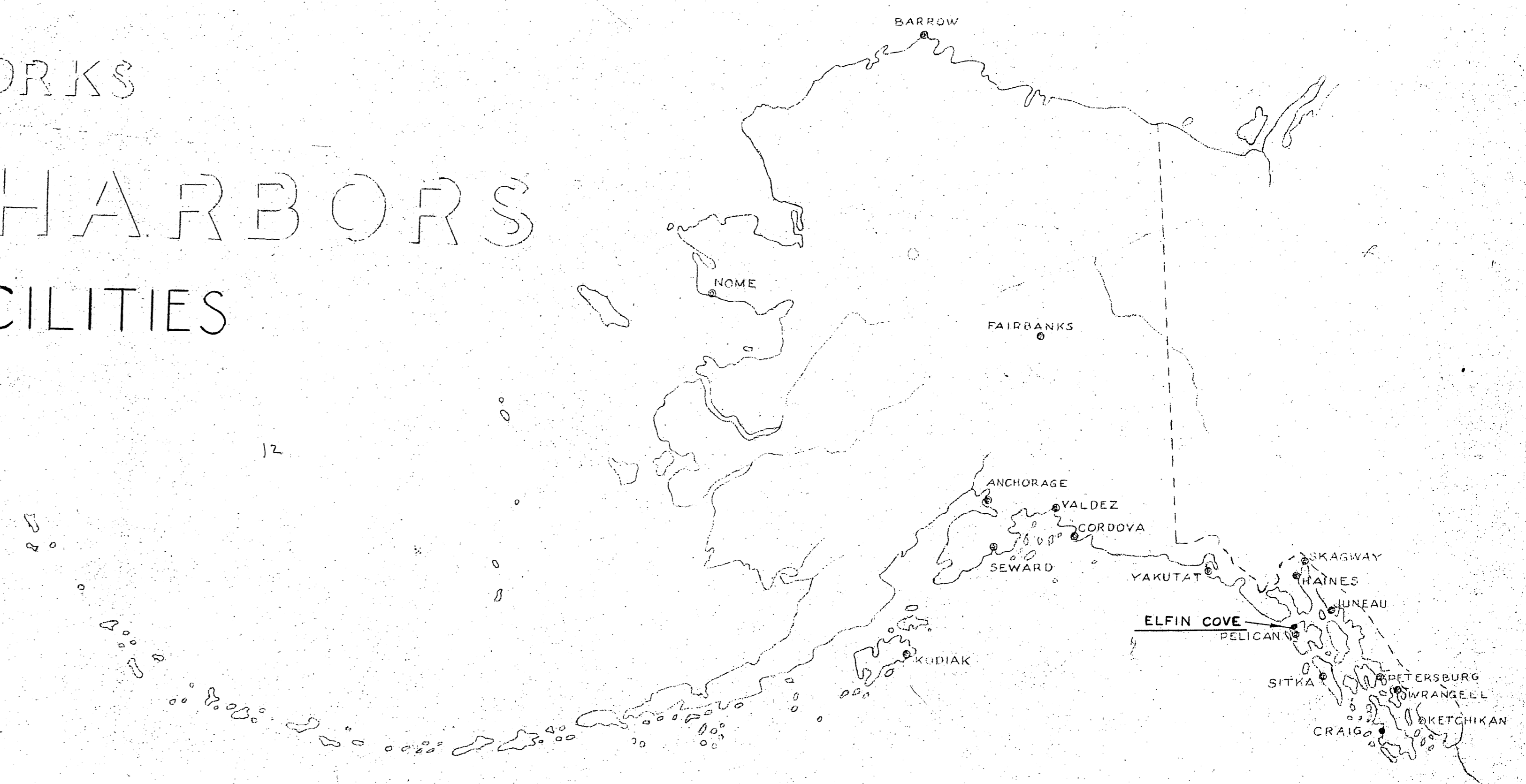
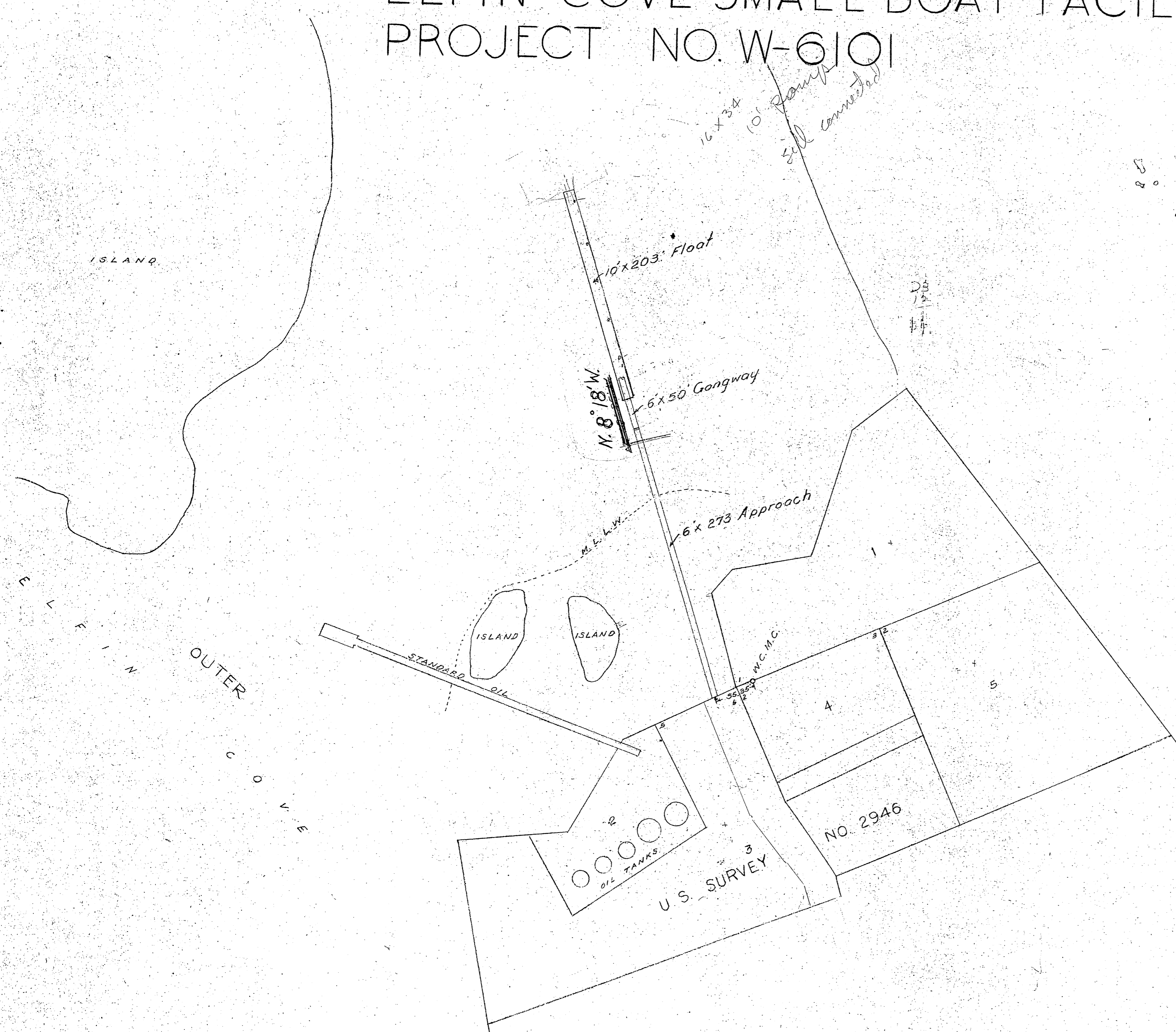


STATE OF ALASKA

DEPARTMENT OF PUBLIC WORKS

DIVISION OF WATER & HARBORS

ELFIN COVE SMALL BOAT FACILITIES
PROJECT NO. W-6101



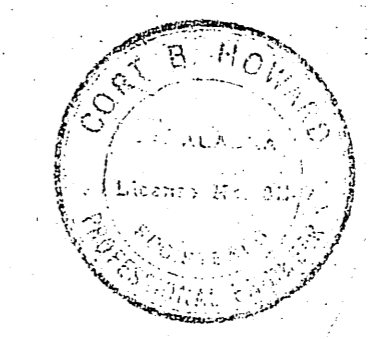
WORK SUMMARY

The major units of this project shall consist of the construction and installation of a 6ft. by 273 ft. approach, a 6ft. by 50 ft. gangway and a 10ft. by 203 ft. styrofoam float. Driving 288 L.F. of piling.

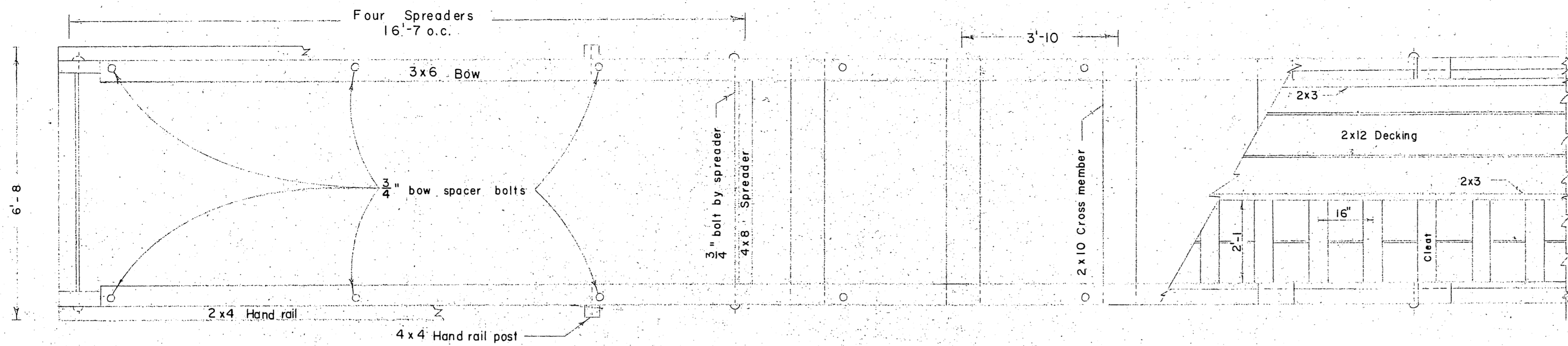
INDEX TO SHEETS

- TITLE SHEET -- 1
- FLOAT DETAIL -- 2
- GANGWAY DETAIL -- 3
- APPROACH DETAIL -- 4

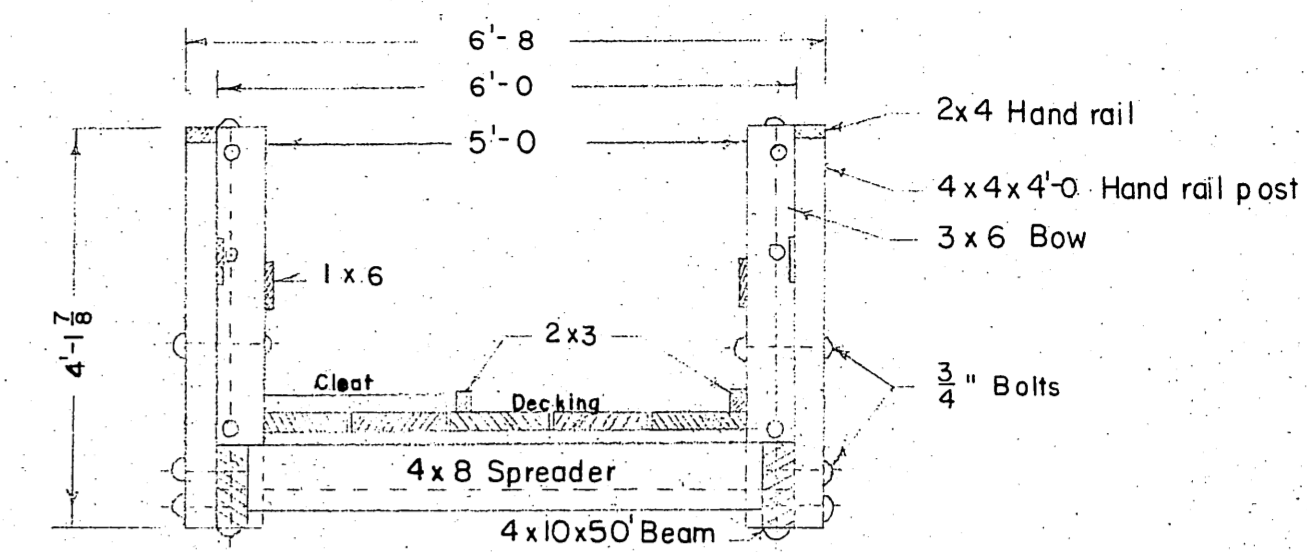
AS BUILT PLANS
JAN-7-1961



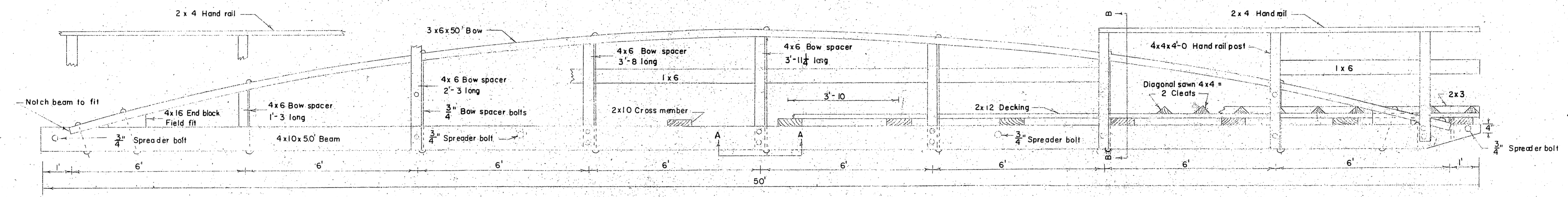
NO.	DATE	REVISION	BY
STATE OF ALASKA DEPARTMENT OF PUBLIC WORKS DIVISION OF WATER AND HARBORS			
SCALE None		APPROVED: [Signature]	
DATE 25 July 1960		COMMISSIONER	
PROJ NO. W-6101		CHECKED BY: [Signature]	
SURVEYED BY: [Signature]		DRAWN BY: [Signature]	



PLAN
1/2" = 1'



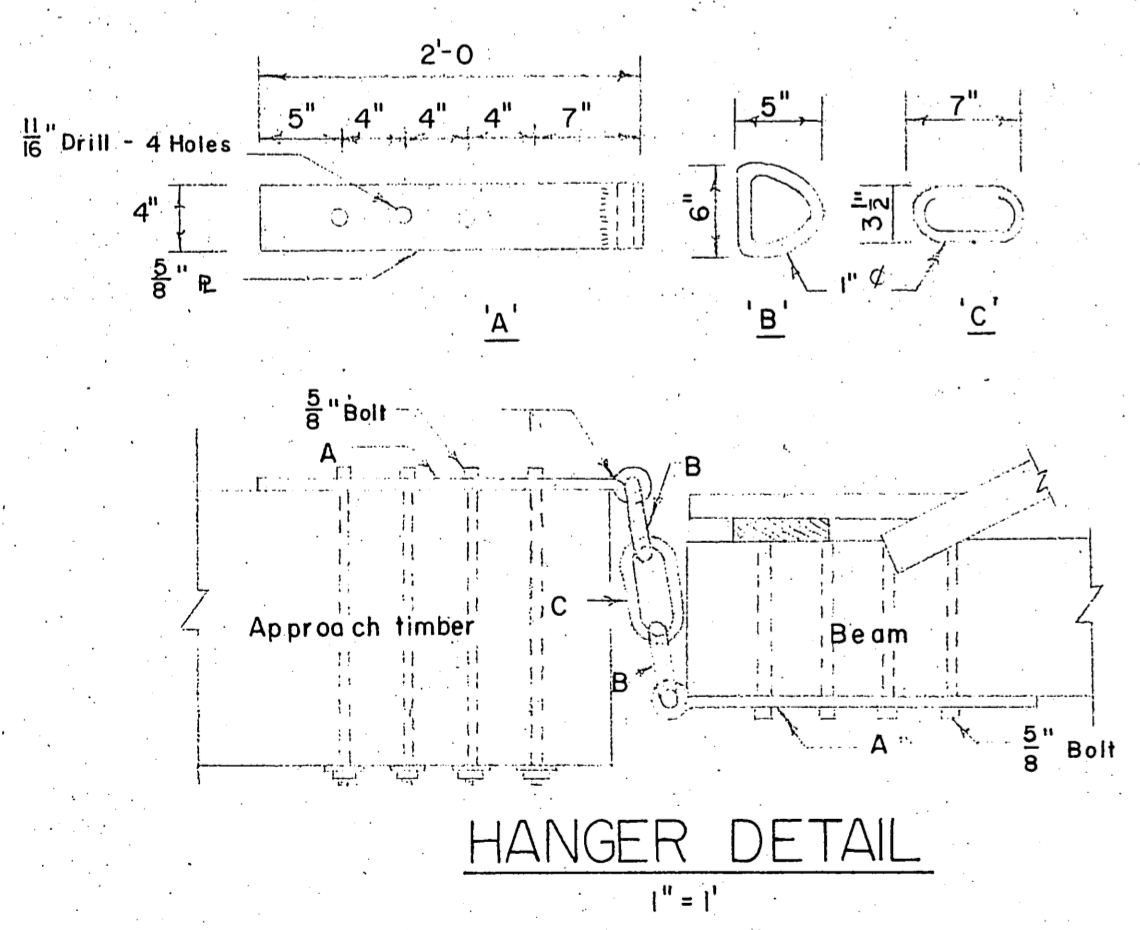
SECTION B-B
1/2" = 1'



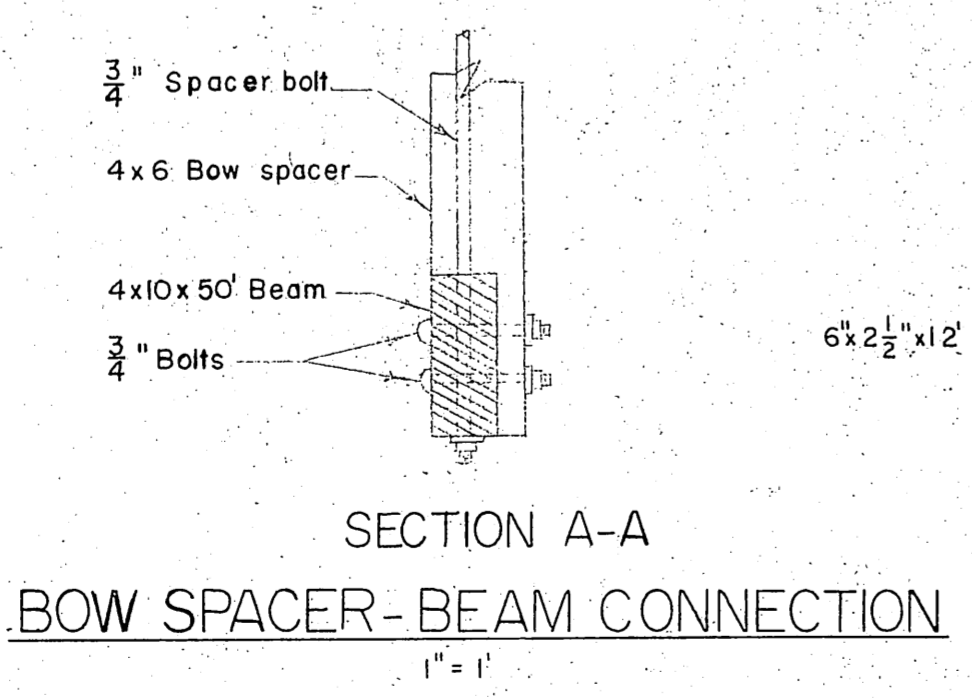
SIDE ELEVATION
1/2" = 1'

NOTES

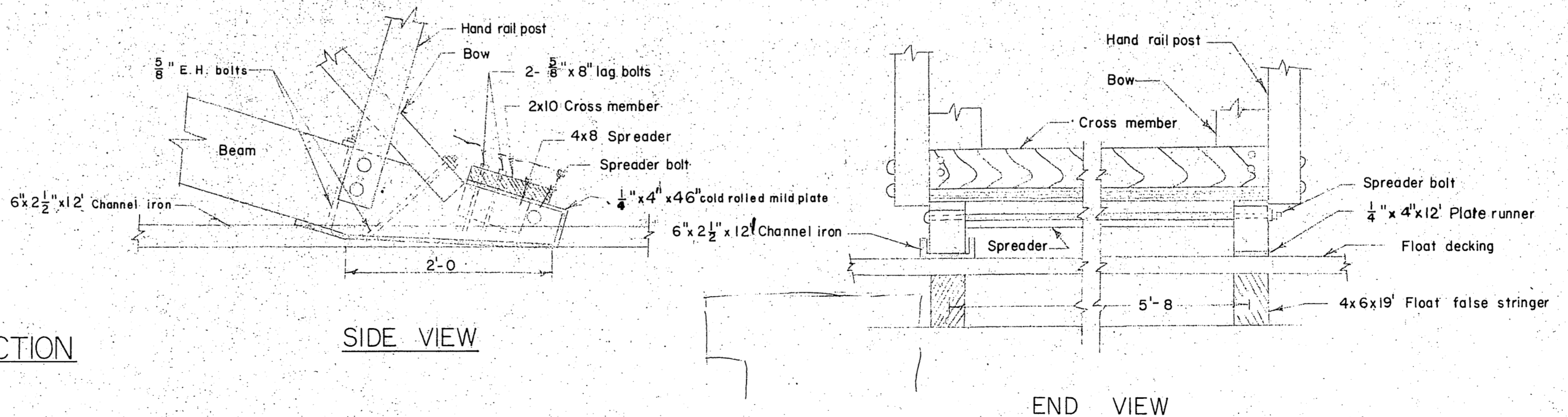
- Section A-A applies only to the three center bow spacers. Remaining four bow spacers are flush with top of beam.
- All lumber with the exception of bow and beam be 'Construction' grade.
- Bow members to be single piece. Select Structural Douglas fir.
- Creo. beams to be single piece. Select Structural Douglas fir, 10 lb. retention.
- Hand rail, bow and 1x6 to be S4S.
- Bow spacer heights are centerline measurements, and spacer to be S2E.
- False stringers directly under runners.
- Channel and plate runners to be securely spiked to false stringers.
- All bolts are 3/4" economy headed, unless noted otherwise.
- Lag bolts to be gimlet pointed.
- Creo. beams to be S2E.
- Cross members and decking to be SIS.
- Native wood bearing surfaces and joints shall be treated with Western Marine Preservative WMD 1702.



HANGER DETAIL
1" = 1'



SECTION A-A
BOW SPACER-BEAM CONNECTION
1" = 1'

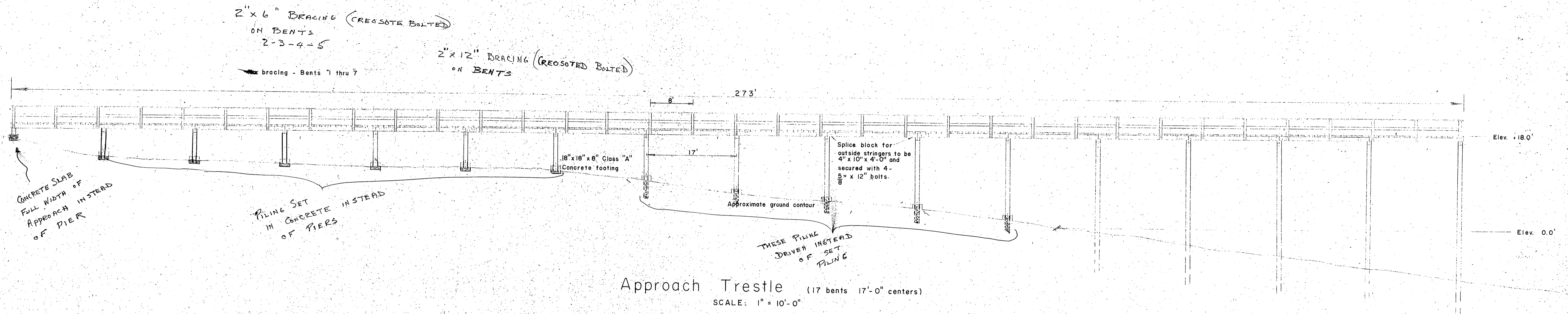


SIDE VIEW

END VIEW

GANGWAY - FLOAT CONNECTION
1" = 1'

NO.	DATE	REVISION	BY
ALASKA DEPARTMENT OF PUBLIC WORKS			
DETAIL FLOAT GANGWAY			
SCALE As Shown		APPROVED R.A. Downing	
DATE July 21, 1960		COMMISSIONER	
FILE NO.		DRAWN BY MGR	
SURVEYED BY		CHECKED BY RPH	

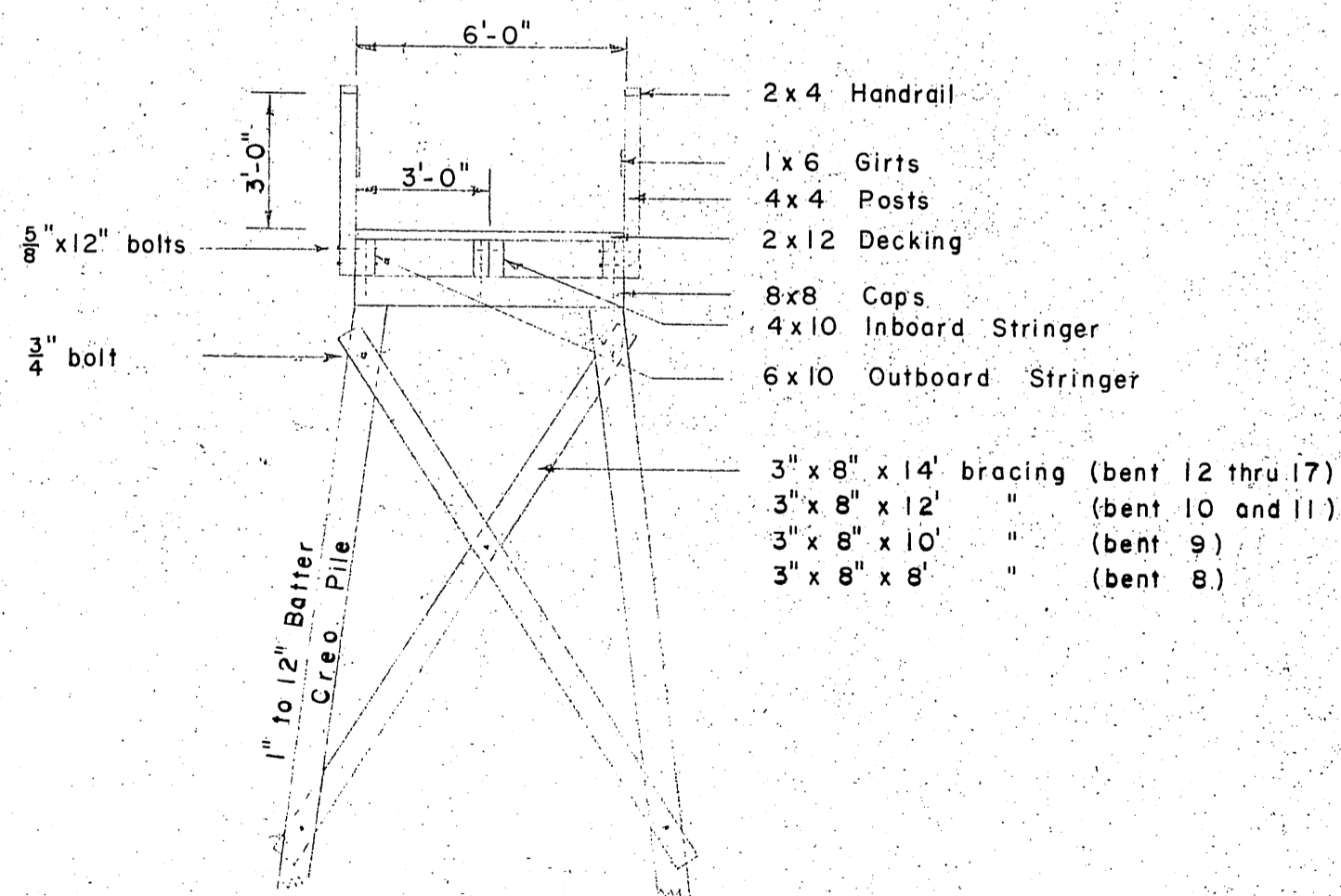


Notes

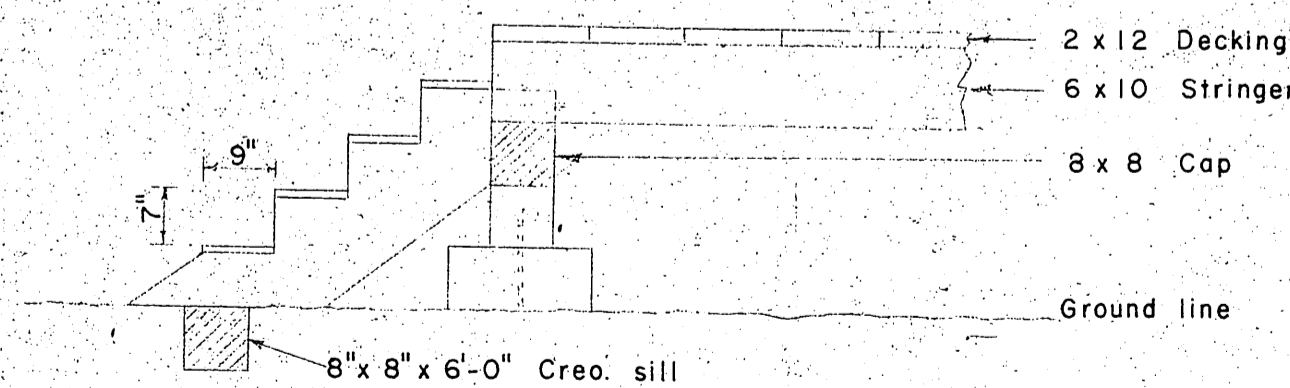
Piling lengths as shown are approximate only. Piling to be hand set on 18" x 18" x 8" concrete footings excavated to solid foundation. A 3/4" steel dowel shall extend from the footing and project at least 6" into the piling. Caps to be secured to piling with 3/4" x 18" drift pins. Stringers to be secured to caps with 5/8" x 16" drift pins. Decking to be nailed with 40 d spikes. All hardware to be Galv. with a malleable iron washer between nut and wood surfaces. All cuts and drill holes to be treated with creo. oil. Bolts to be economy head bolts. Piling bents 1 thru 12 on set-ups. Piling bents 13 thru 17 driven.

All piling and bracing treated to 12 lbs. Retention.
 All caps and stringers " " 10 lbs. " "
 All lumber above stringers to be Sitka Spruce.

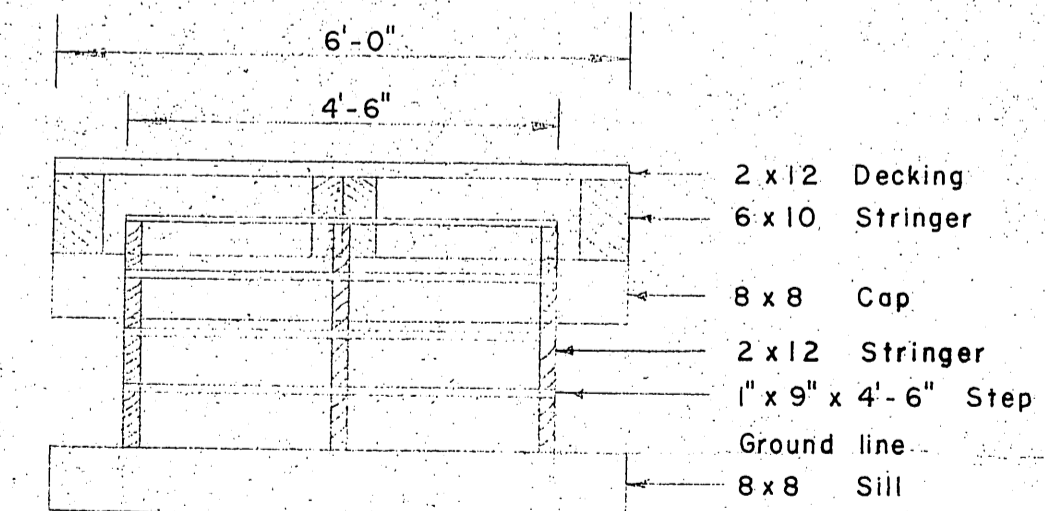
	S4S	CONSTRUCTION
HAND RAIL	S4S	"
GIRT	S4S	"
HAND RAIL POST	ROUGH	"
DECKING	S1S	"
BRACING	ROUGH	"
STRINGERS	S2E	SELECT STRUCT.
CAPS	S2S	" "
PILING	CLASS "A"	" "



X - Section
 SCALE: 1/4" = 1'-0"



Approach Stairway
 SCALE: 1/2" = 1'-0"



END VIEW
 SCALE: 1/2" = 1'-0"

NO.	DATE	REVISION	BY

ALASKA HIGHWAY AND PUBLIC WORKS DEPARTMENT

ELFIN COVE SMALL BOAT FACILITIES

APPROACH DE TAIL

SCALE: _____

DATE: July 29, 1960

APPROVED: R. A. Downing

NO. _____ COMMISSIONER

SURVEYED BY: RH DRAWN BY: GR CHECKED BY: RH