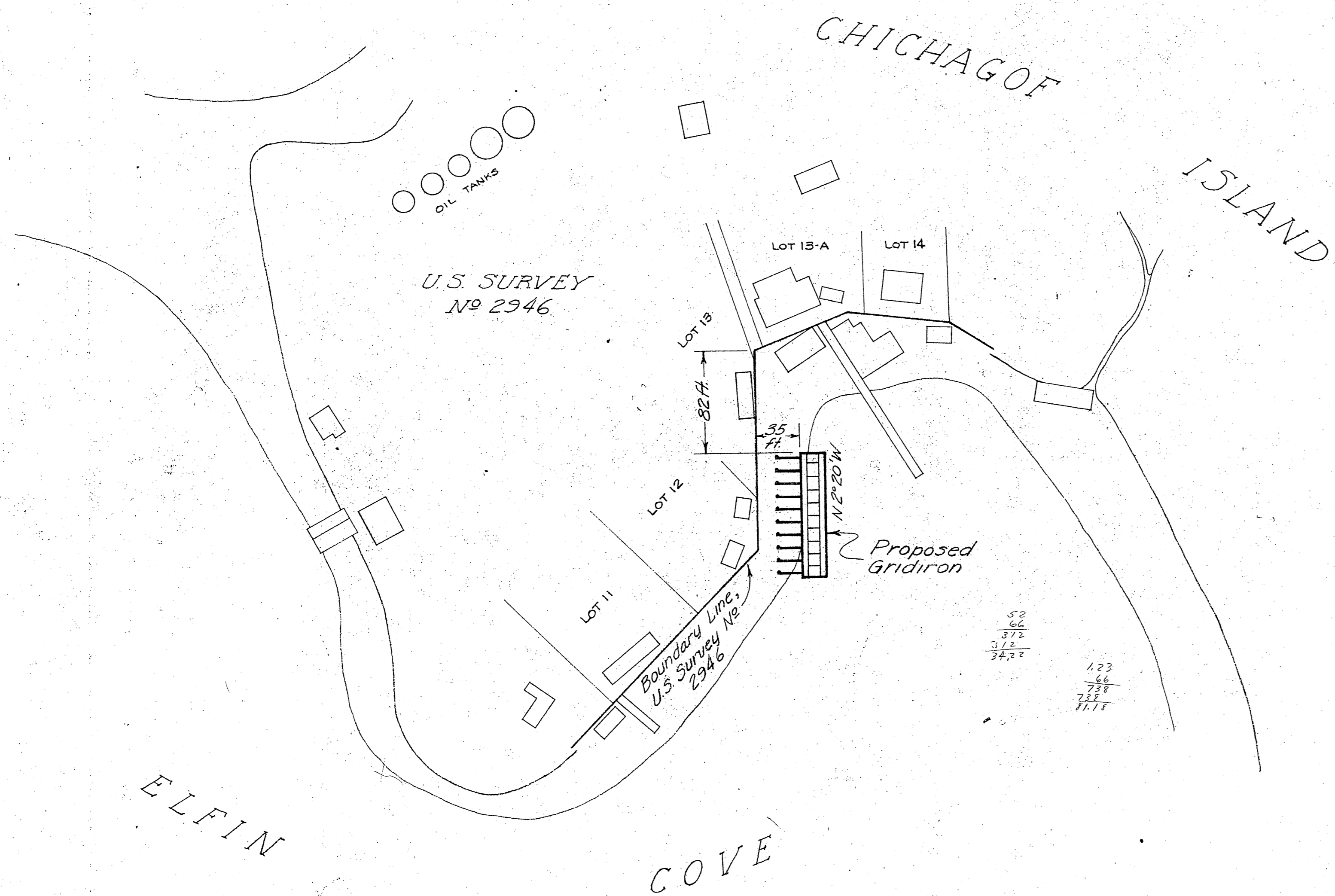
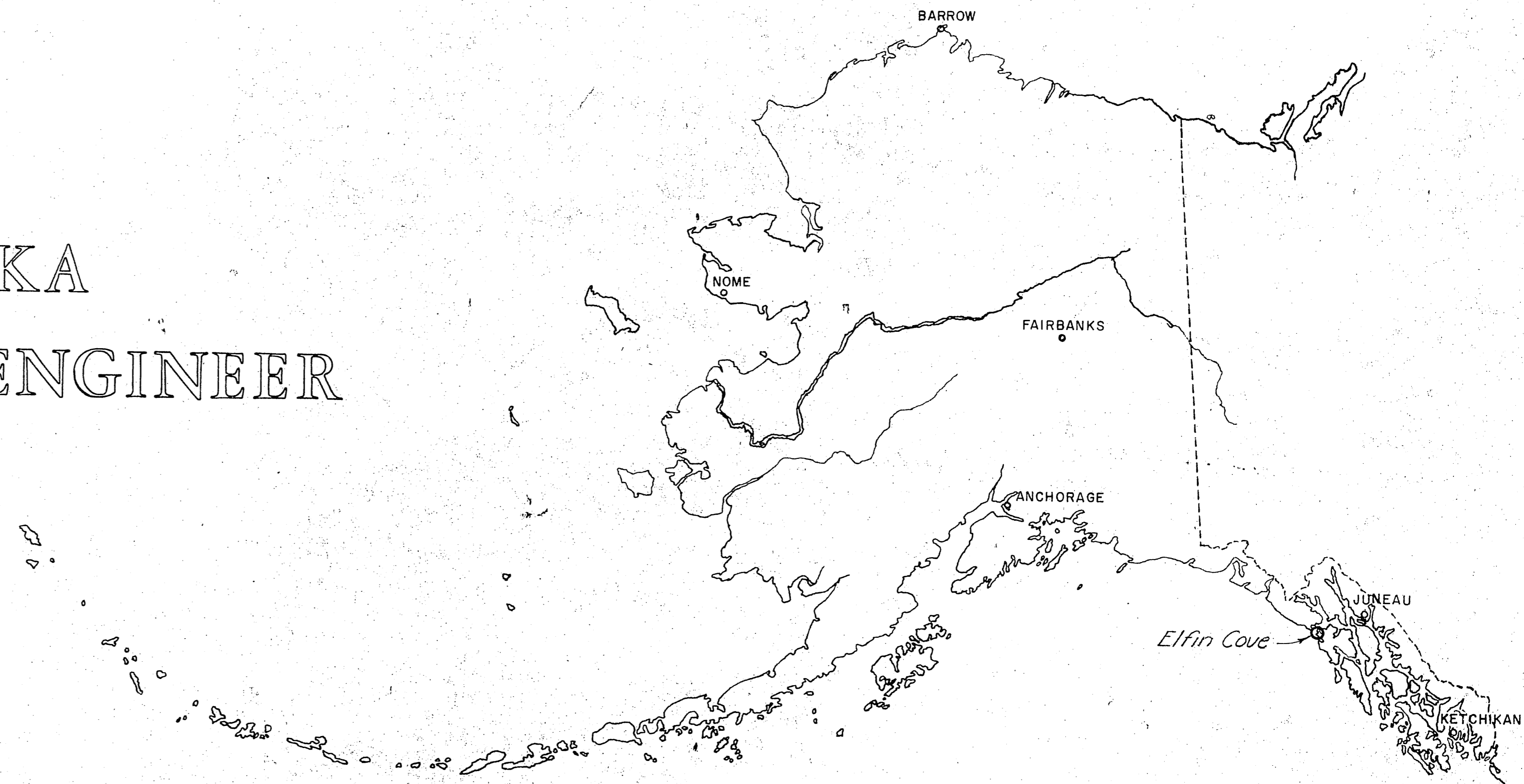


TERRITORY OF ALASKA
 OFFICE OF THE HIGHWAY ENGINEER
 ELFIN COVE GRIDIRON
 PROJECT 1-56-W4



WORK SUMMARY
 The major unit of this project shall be construction of a 20 ft. by 100 ft. gridiron.
 Exact location and orientation of the structure shall be determined by the engineer.

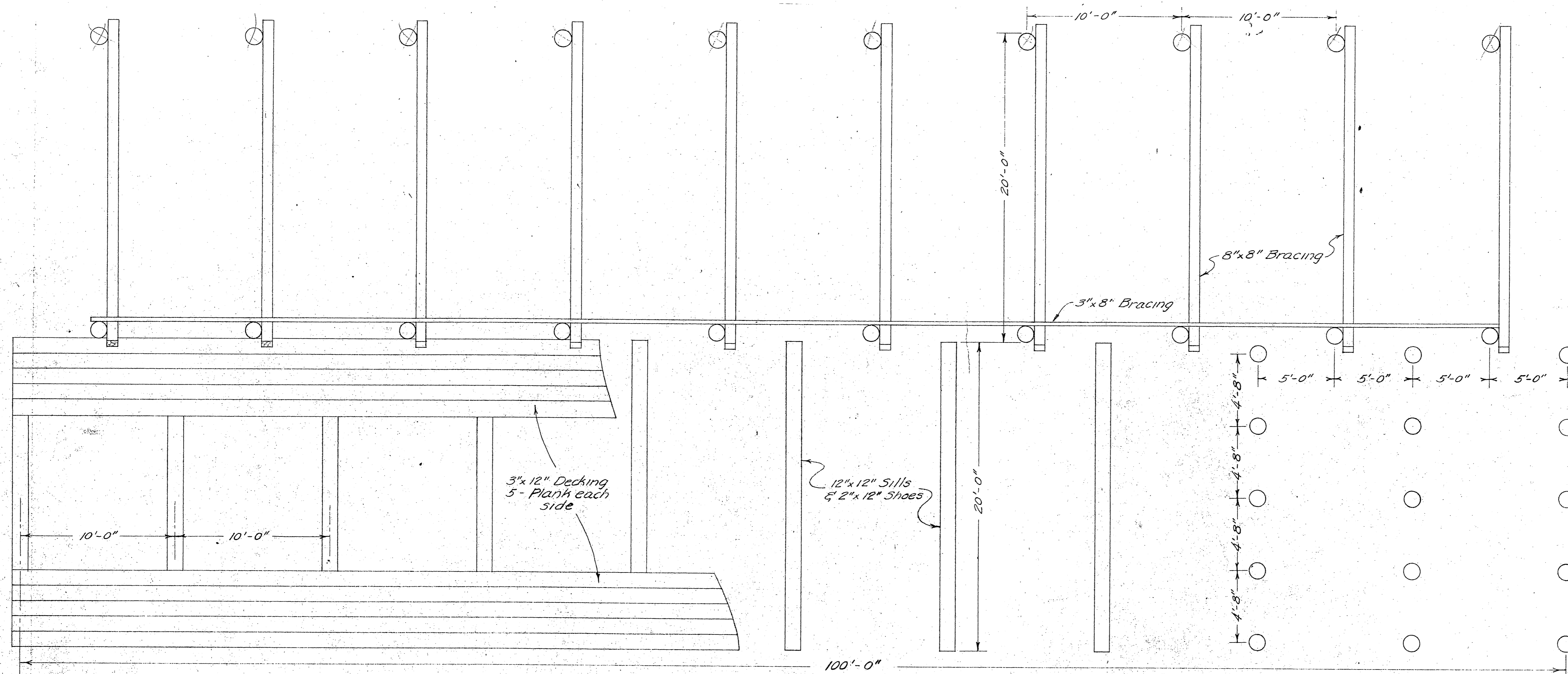
STANDARD SYMBOLS

TREE	
POWER POLE	
TELEPHONE POLE	
FENCE	
SECTION LINE	
RIGHT OF WAY LINE	

INDEX TO SHEETS

TITLE SHEET	...	1
PLAN - PROFILE		
TYPICAL SECTIONS and DETAILS	...	2





PLAN VIEW

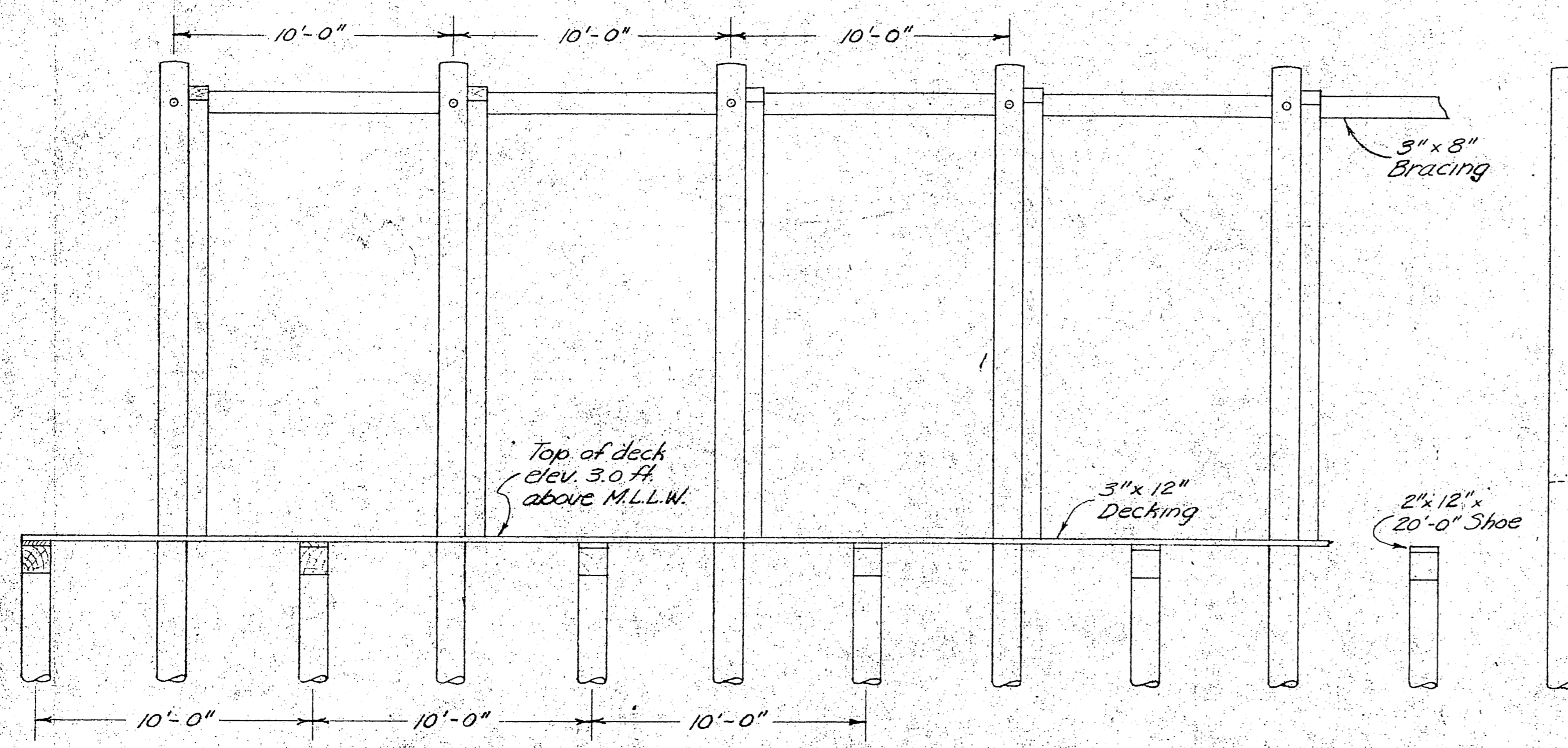
NOTES

All piling shall be class "B", piling and dimensioned lumber shall be creosote press treated to 12 lb retention.

All saw cuts and bolt and drift holes shall be coated with hot creosote before assembly.

Shoes shall be securely spiked to sills, decking shall have at least 2 - 60 d. galv spikes per plank at each sill

Lashing and stub pile tops shall be cut off at an angle of 15° to drain away from the grillage, and at the elevation shown on the plans. All pile tops shall then be treated with two coats of hot creosote oil followed by one coat of hot asphalt cement, and finally a covering of one layer of 55 pound saturated felt roofing pulled down over the pile sides and fastened with galvanized roofing nails.



SIDE ELEVATION

PILING WILL BE FURNISHED BY THE TERRITORY

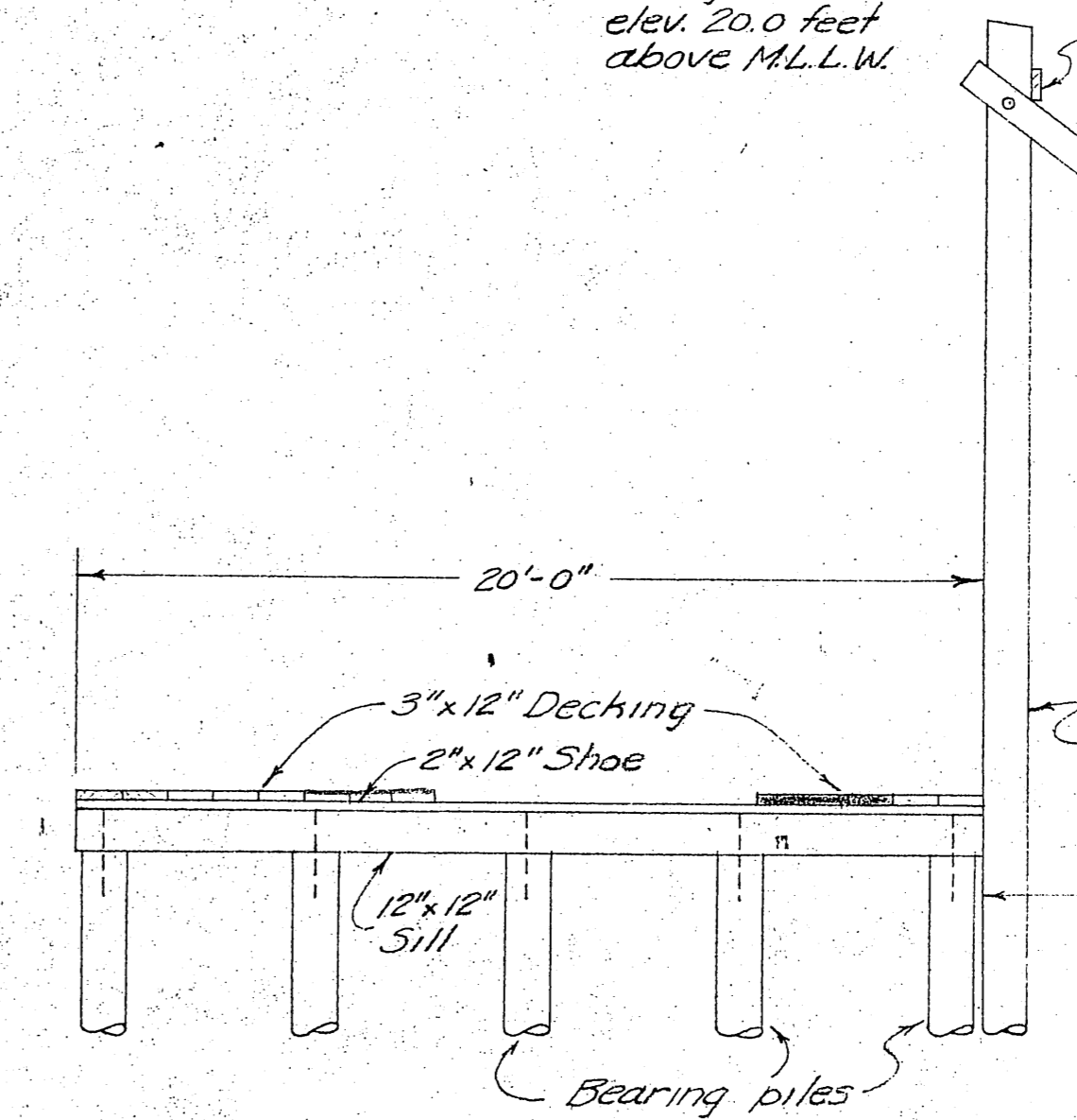
All bracing shall be fastened at each pile with 3/4" black iron machine bolts and washers.

8" x 8" x 26'-0" Brace

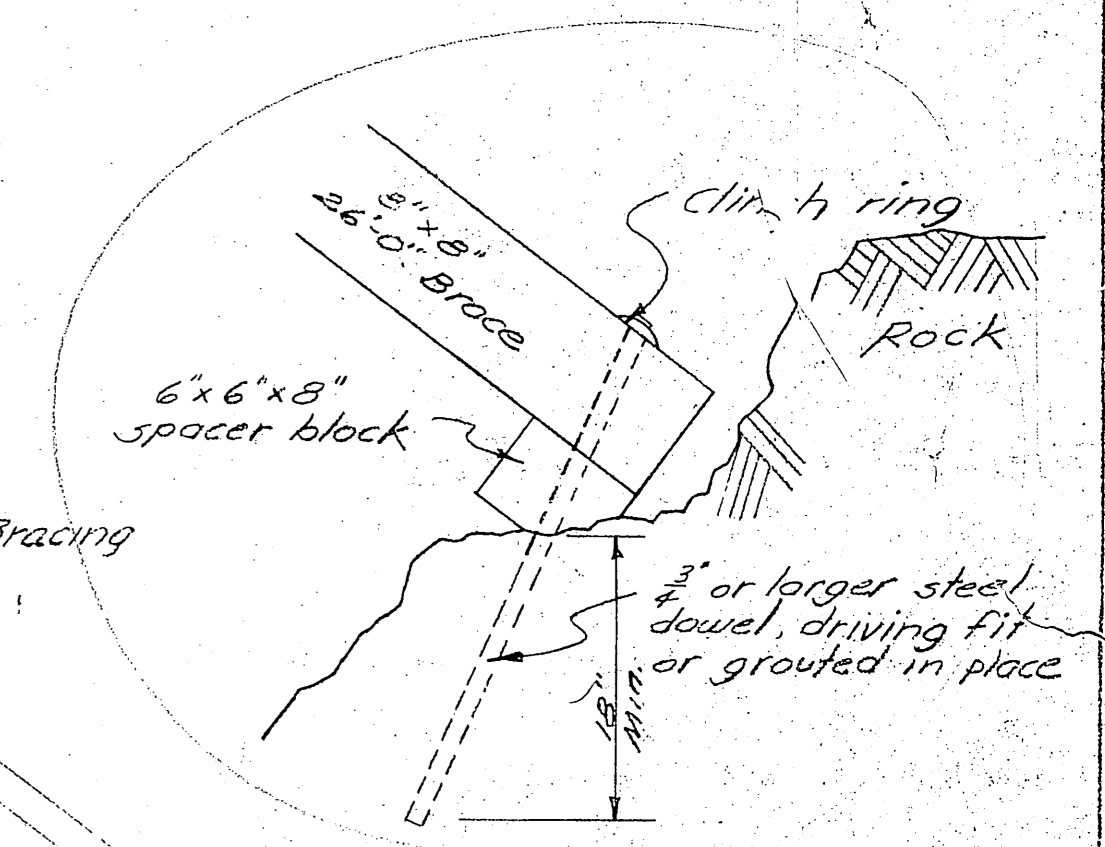
12" x 12" x 20'-0" Sill

3/4" x 24" black iron drift pin each bearing pile

Piling cutoff elev. 20.0 feet above M.L.L.W.



END ELEVATION



DETAIL ALTERNATE TO STUB PILE
Scale 1"=1'-0"

Stub piling cutoff shall allow brace to clear mud line by 1 foot