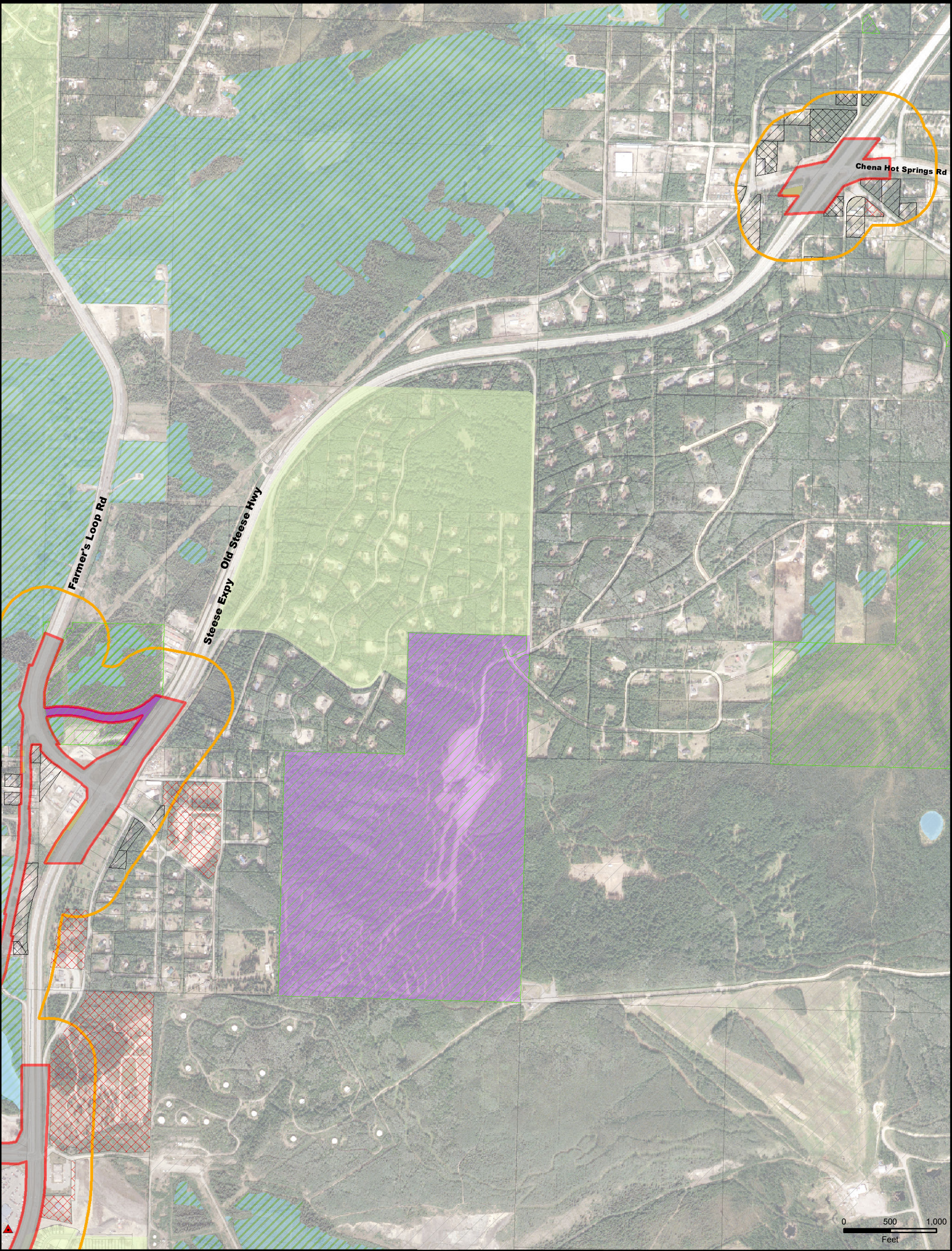


Steese Expressway: Johansen Expressway to Project End



Existing Land Use of Potential ROW Impacts

- Commercial
- Religious
- Residential
- Vacant (Government)

Special Features

- Church; School or Cemetery
- Contaminated Sites
- Wetlands
- Waterbodies/Rivers

Project Elements

- Project Limits (Concept 3)
- Preliminary Area of Potential Effect

Land Use/Zoning

- Residential
- Public Open Space/Parks
- Fort Wainwright

4(f) Eligible Structures

4(f) Potentially Eligible Structures

4(f) Properties (Parkland)



STATE OF ALASKA

DEPARTMENT OF TRANSPORTATION AND PUBLIC FACILITIES

Project No. 60799/NH-000S(781)

Richardson Highway/Steese Expressway

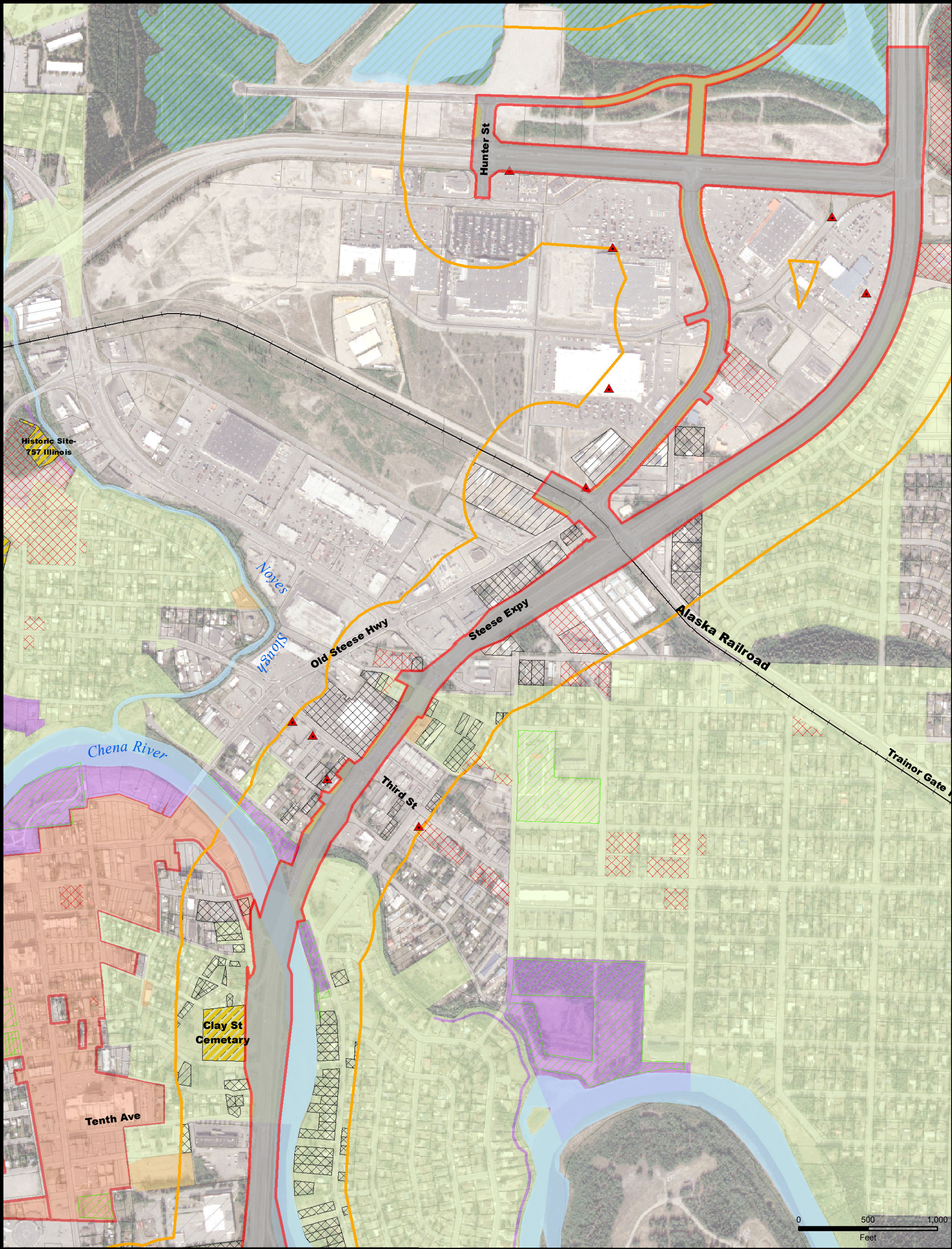
Fairbanks, Alaska

Date: 3/31/2014

Concept 3 Map 1



Steese Expressway: Johansen Expressway to Airport Way



Existing Land Use of Potential ROW Impacts

- Commercial
- Religious
- Residential
- Vacant (Government)

Special Features

- Church, School or Cemetery
- Contaminated Sites
- Creamer's Field Migratory Waterfowl Refuge
- Wetlands
- Waterbodies/Rivers

Project Elements

- Project Limits (Concept 3)
- Preliminary Area of Potential Effect

Land Use/Zoning

- Central Business District
- Commercial
- Residential
- Public Open Space/Parks
- Fort Wainwright

4(f) Eligible Structures

- 4(f) Potentially Eligible Structures
- 4(f) Properties (Parkland)
- Historic Register Site



STATE OF ALASKA  
DEPARTMENT OF TRANSPORTATION  
AND PUBLIC FACILITIES

Project No. 60799/NH-000S(781)  
Richardson Highway/Steese Expressway

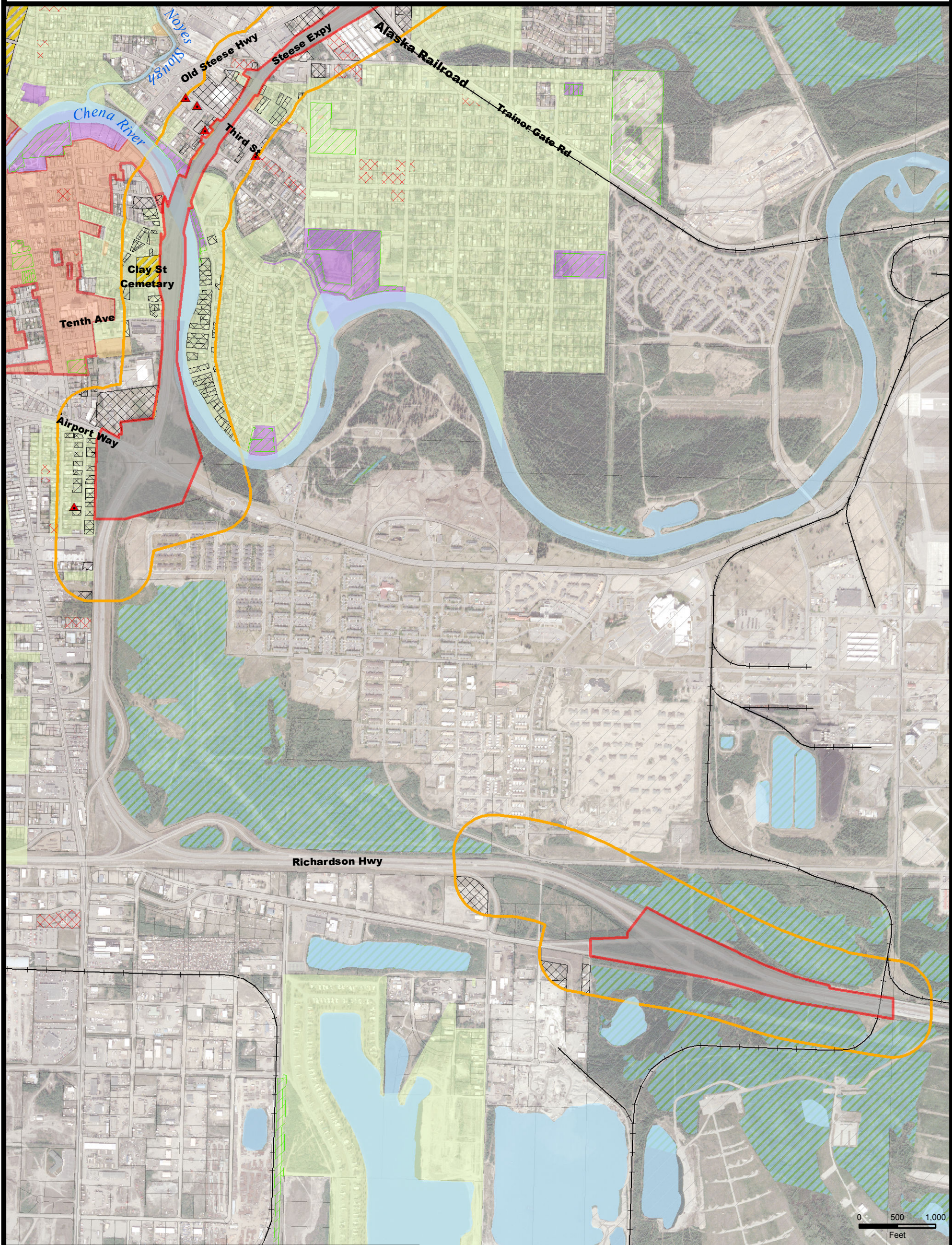
Fairbanks, Alaska

Date: 3/31/2014

Concept 3 Map 2



Project Start to Steese Expressway at Airport Way



0 500 1,000  
Feet

Existing Land Use of  
Potential ROW Impacts

- Commercial
- Residential
- Vacant (Government)
- Special Features
- Church; School or Cemetery
- Contaminated Sites
- Wetlands
- Waterbodies/Rivers

Project Elements

- Project Limits (Concept 3)
- Preliminary Area of Potential Effect
- Land Use/Zoning
- Central Business District
- Commercial
- Residential
- Public Open Space/Parks
- Fort Wainwright
- 4(f) Eligible Structures
- 4(f) Potentially Eligible Structures
- 4(f) Properties (Parkland)
- Historic Register Site



STATE OF ALASKA  
DEPARTMENT OF TRANSPORTATION  
AND PUBLIC FACILITIES

Project No. 60799/NH-000S(781)  
Richardson Highway/Steese Expressway

Fairbanks, Alaska

Date: 3/31/2014

Concept 3 Map 3