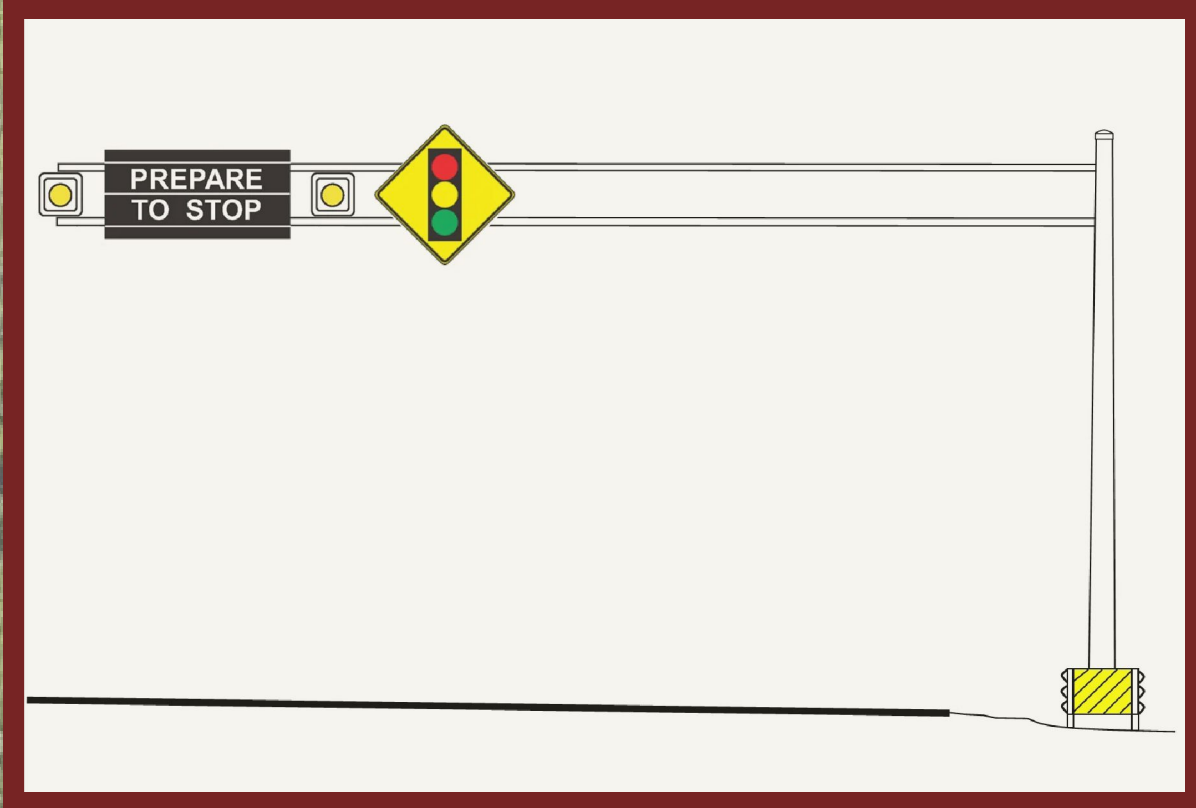
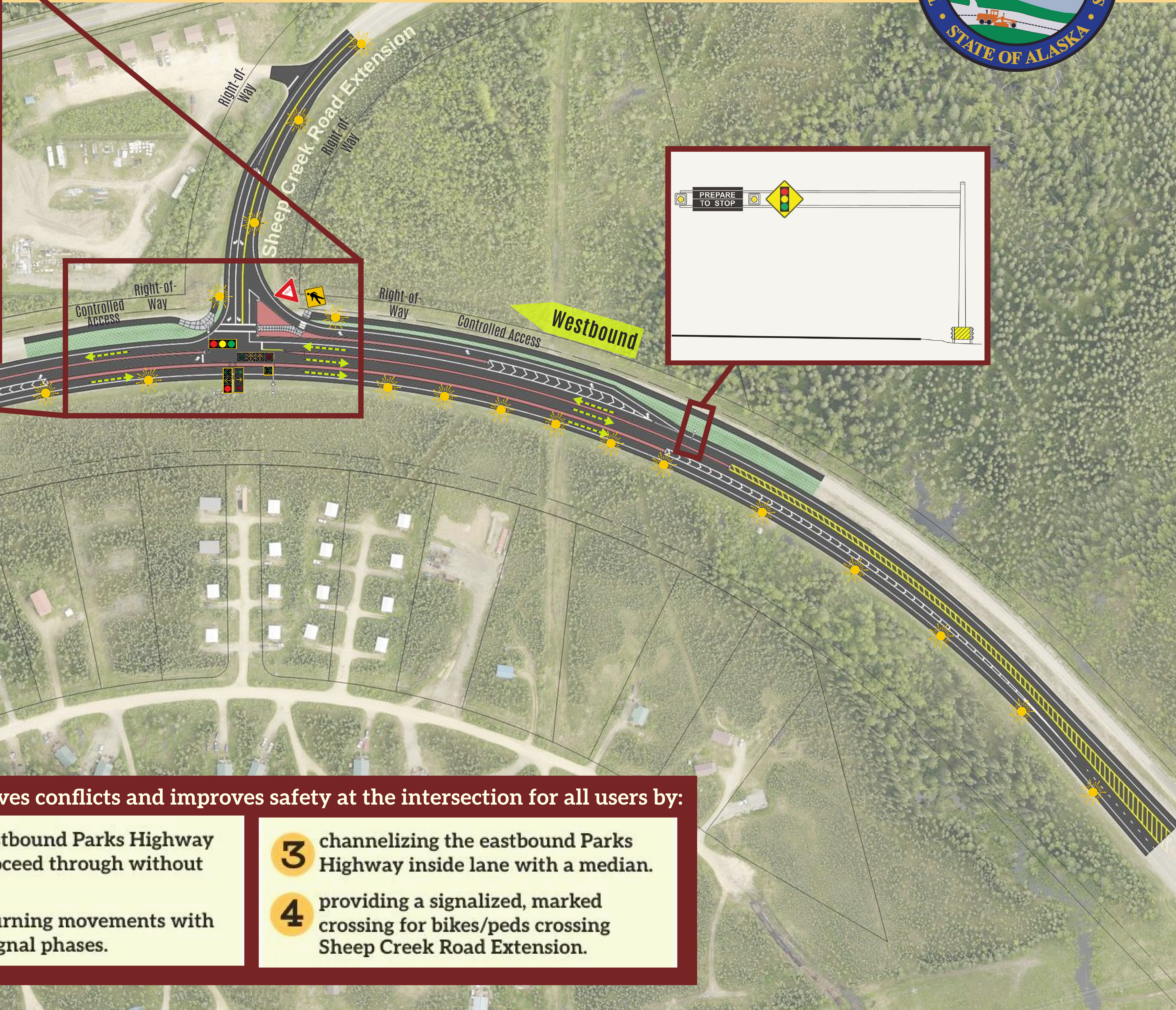
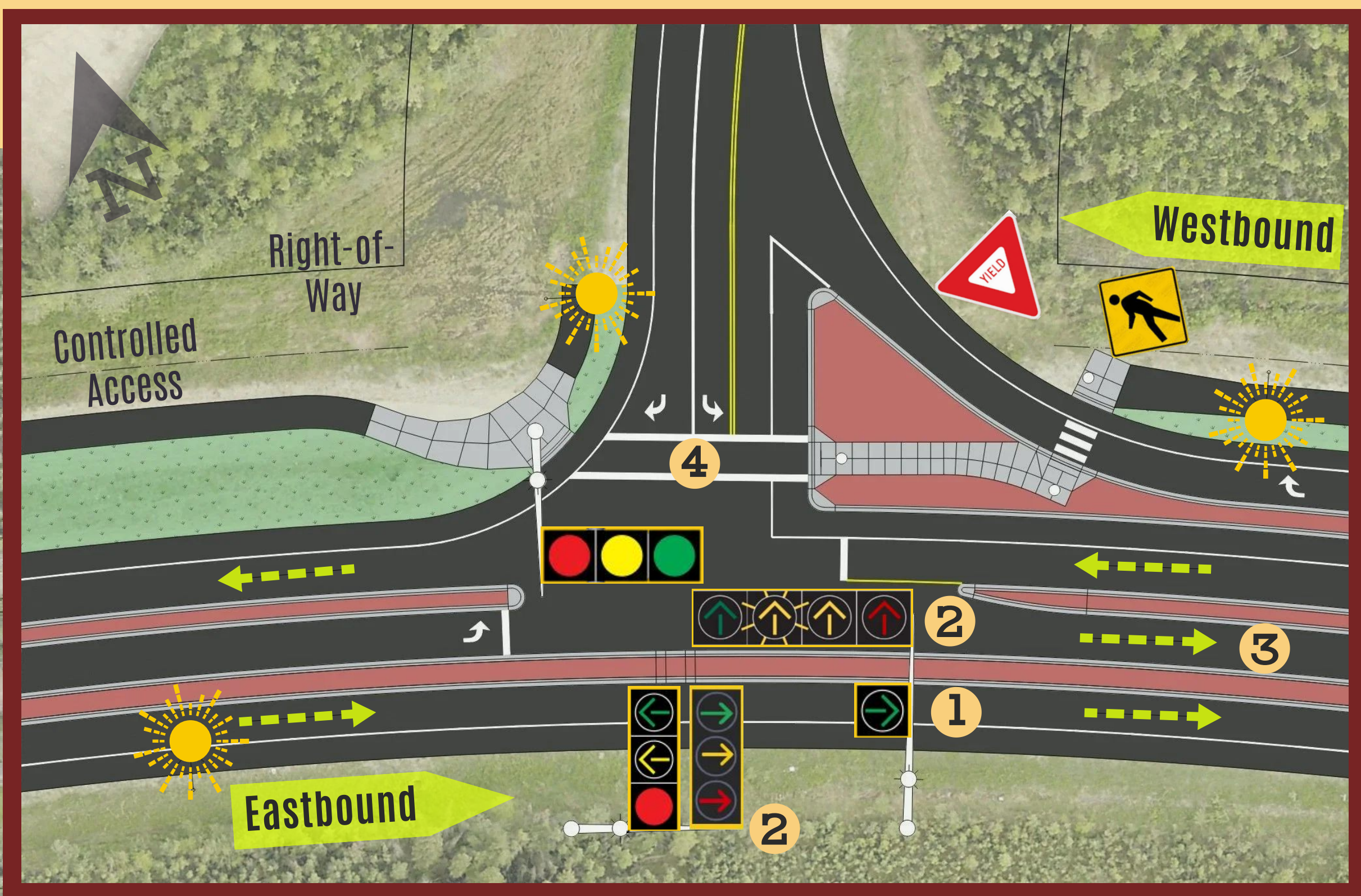


PARKS HIGHWAY / SHEEP CREEK ROAD EXTENSION TRAFFIC SIGNAL (HSIP)

PROJECT NO. NFHWY00898/A045(032)



Preferred Alternative



This concept resolves conflicts and improves safety at the intersection for all users by:

- | | |
|--|--|
| 1 allowing eastbound Parks Highway traffic to proceed through without stopping. | 3 channelizing the eastbound Parks Highway inside lane with a median. |
| 2 managing turning movements with dedicated signal phases. | 4 providing a signalized, marked crossing for bikes/peds crossing Sheep Creek Road Extension. |