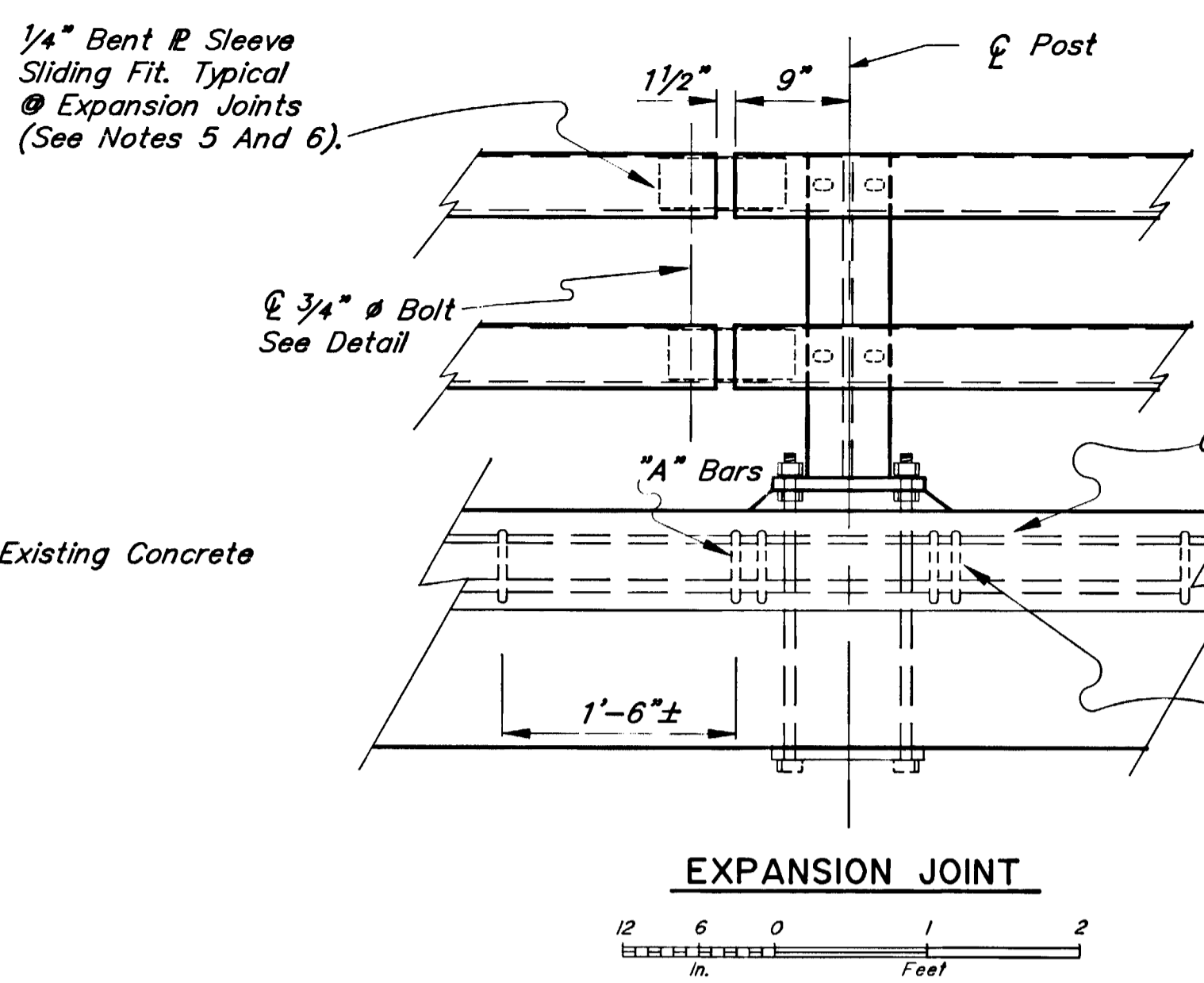
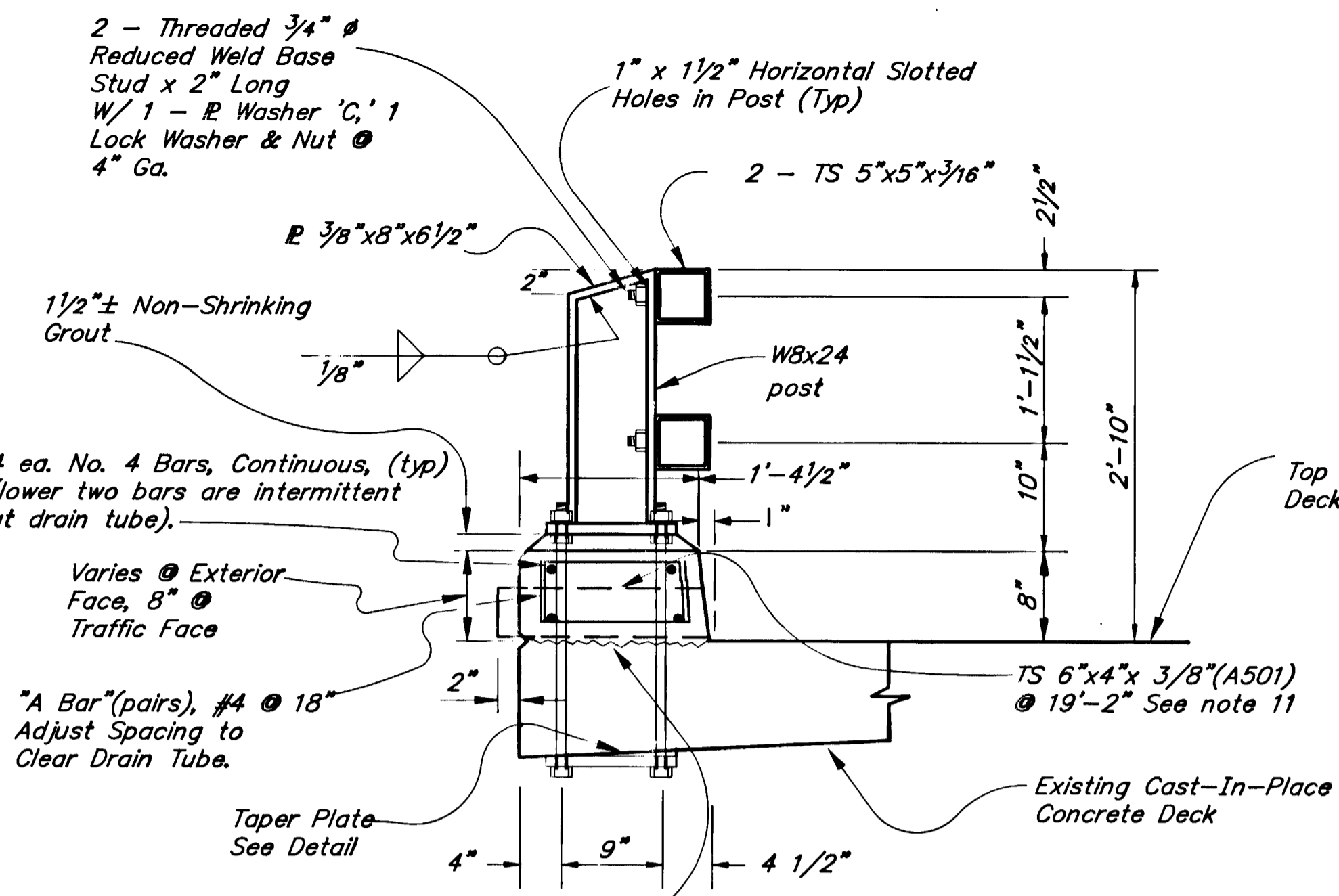


STATE	PROJECT DESIGNATION	YEAR	SHEET NO.	TOTAL SHEETS
ALASKA	I-OA4-3(7)	1991	20	26



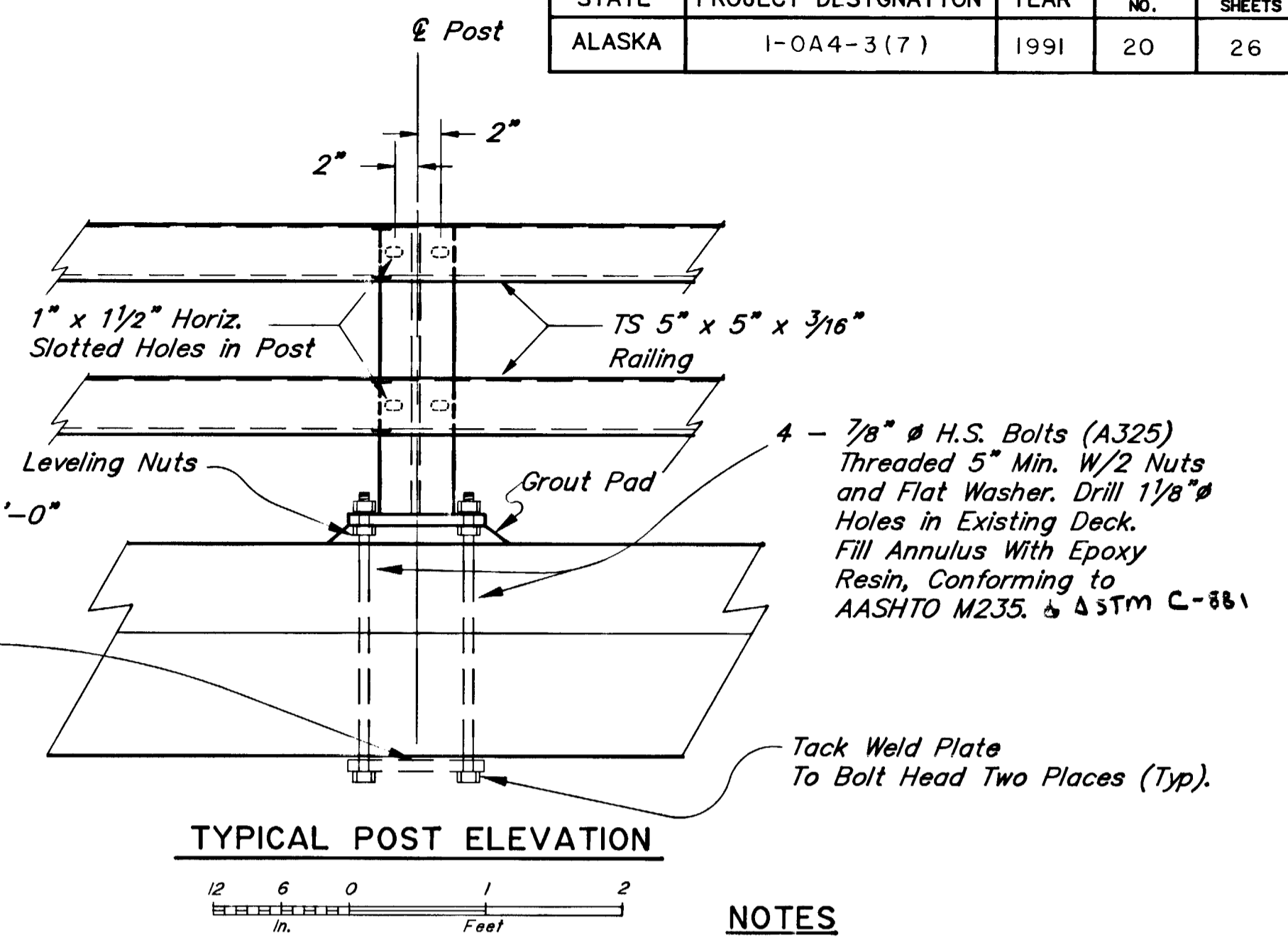
AS BUILT PLANS

Project Engineer _____ Date _____

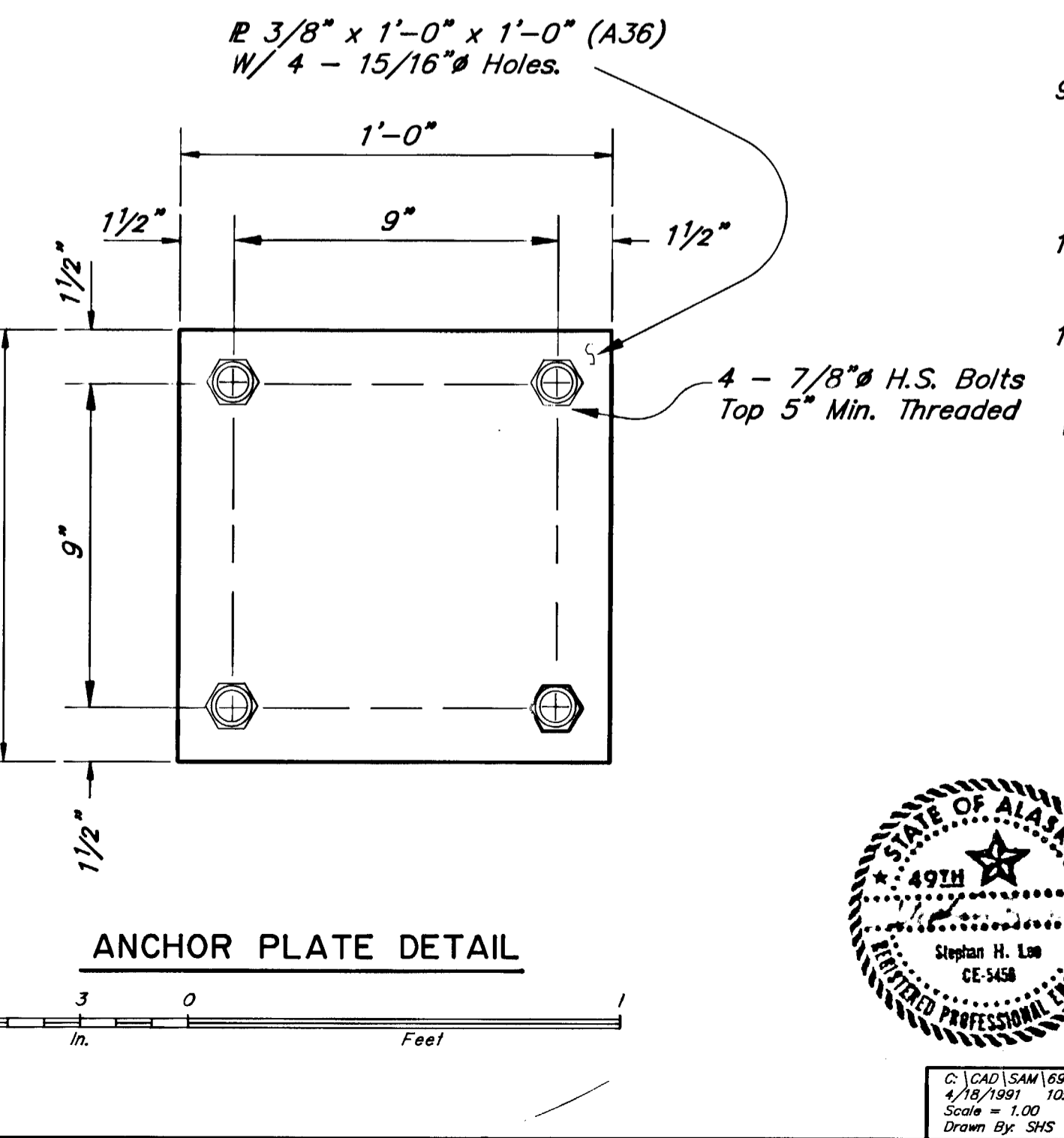
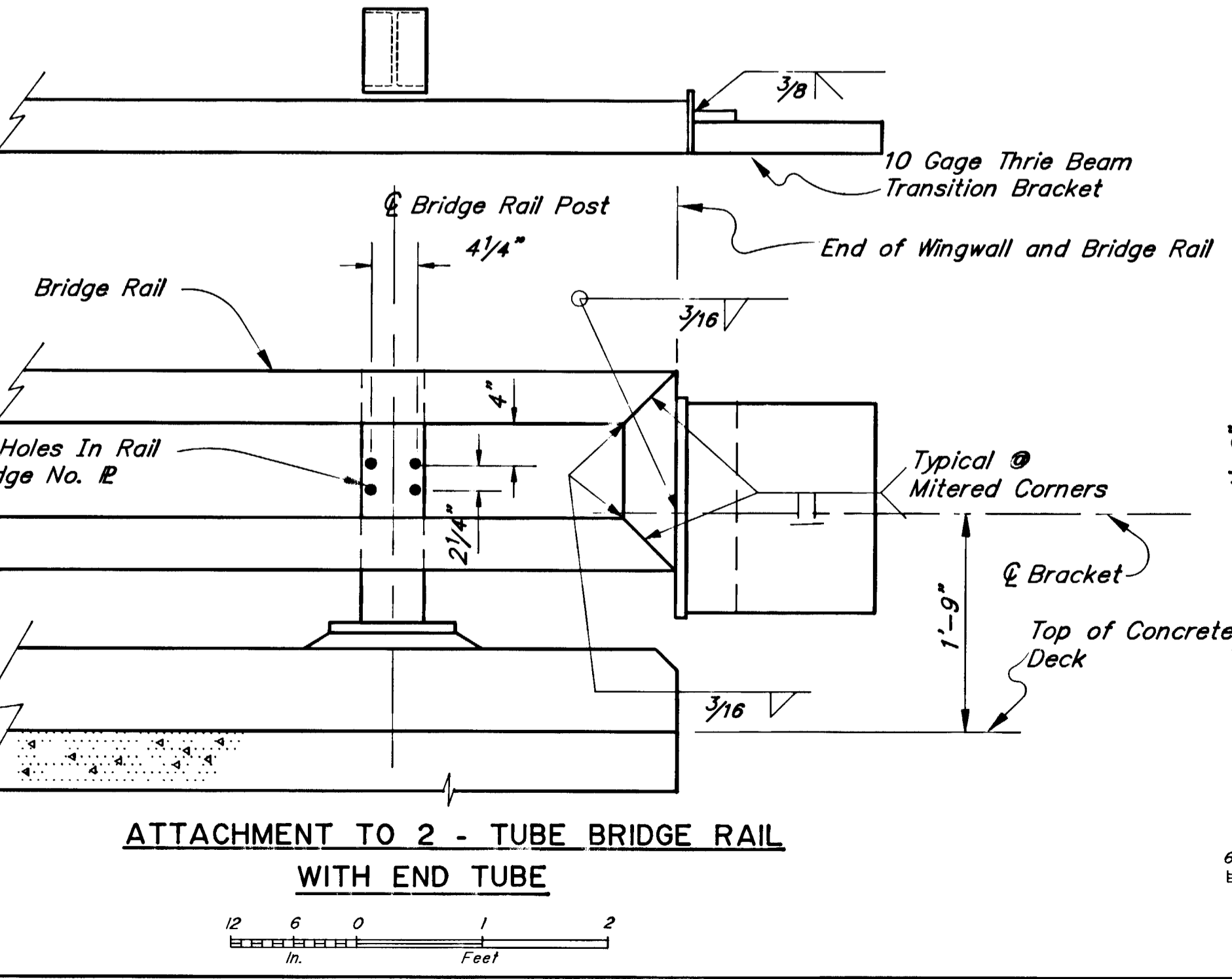
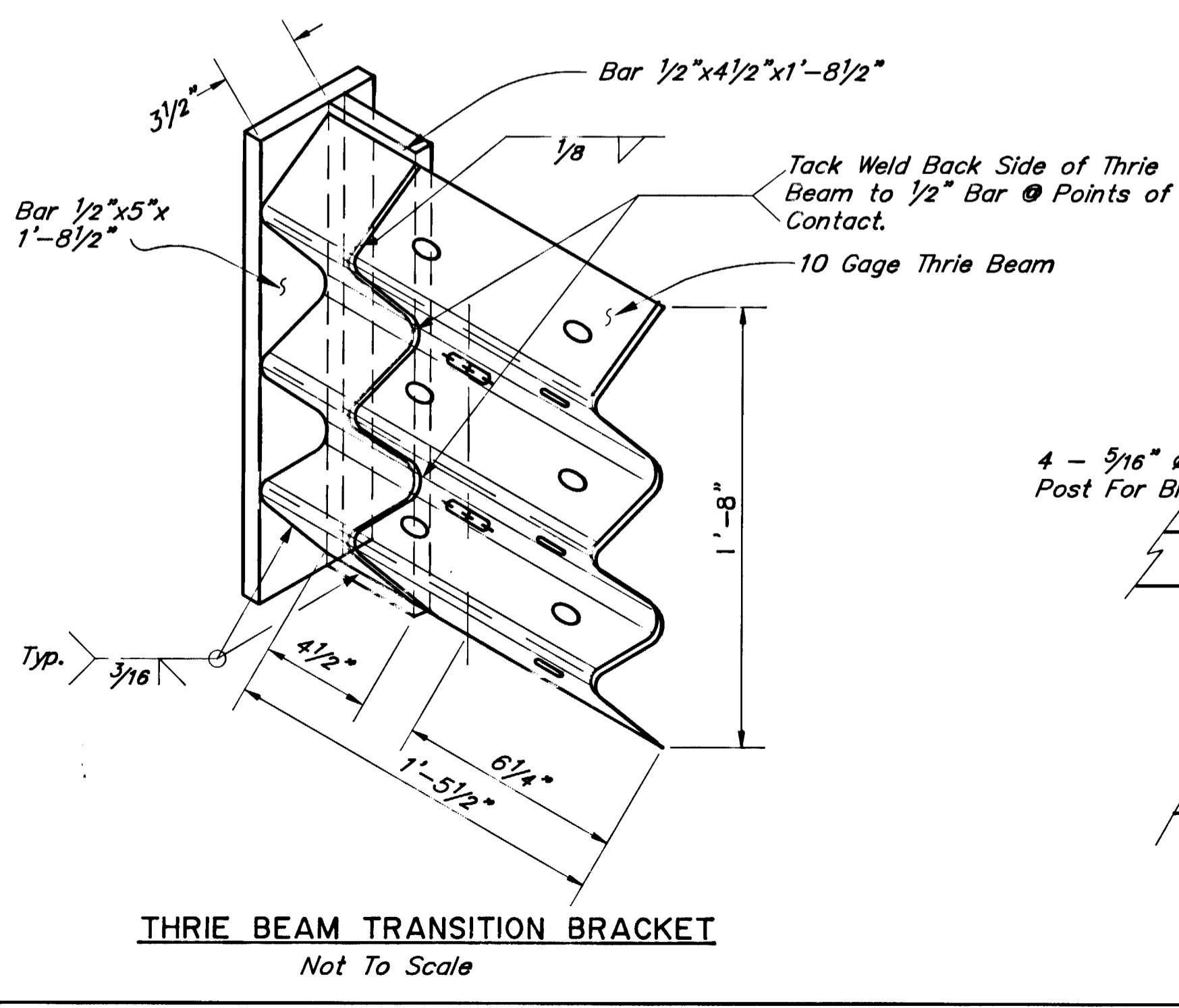
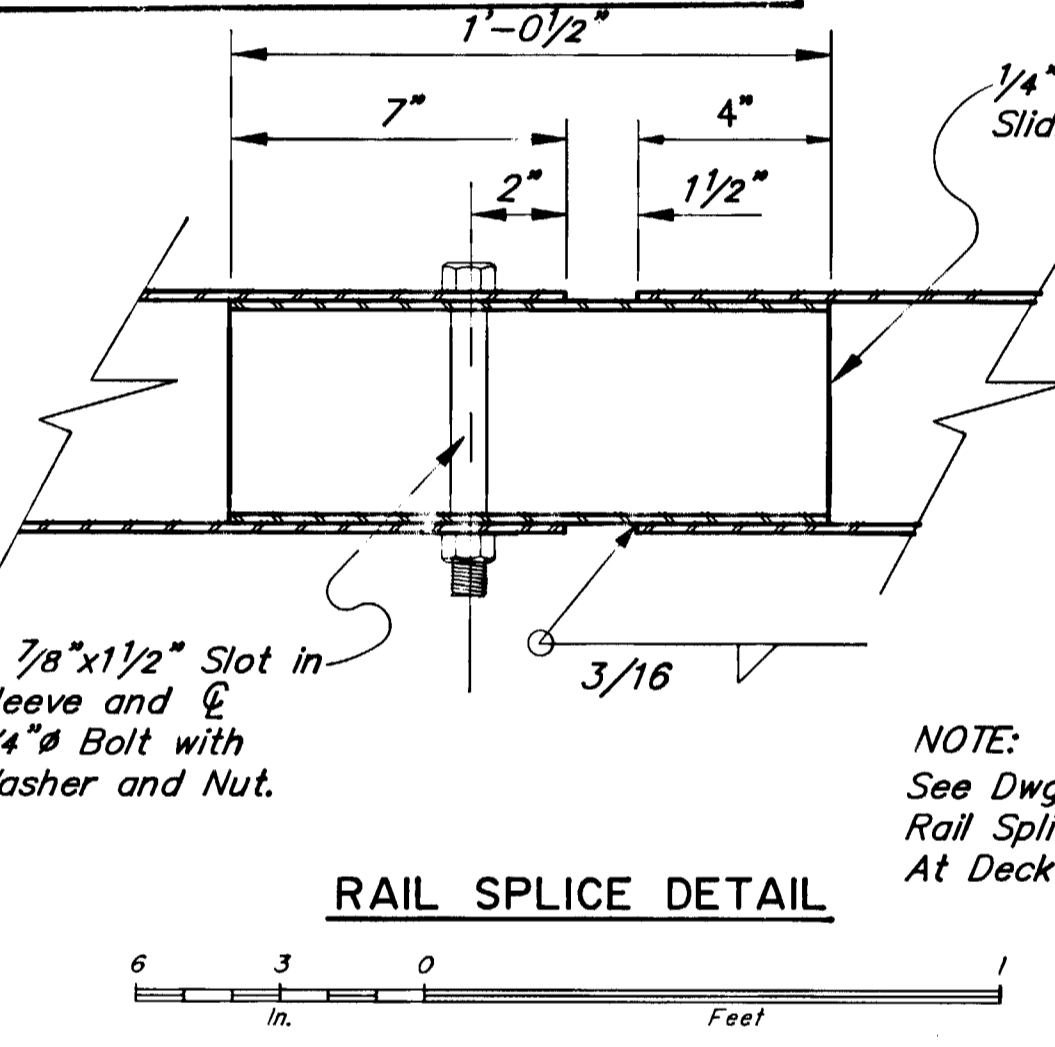
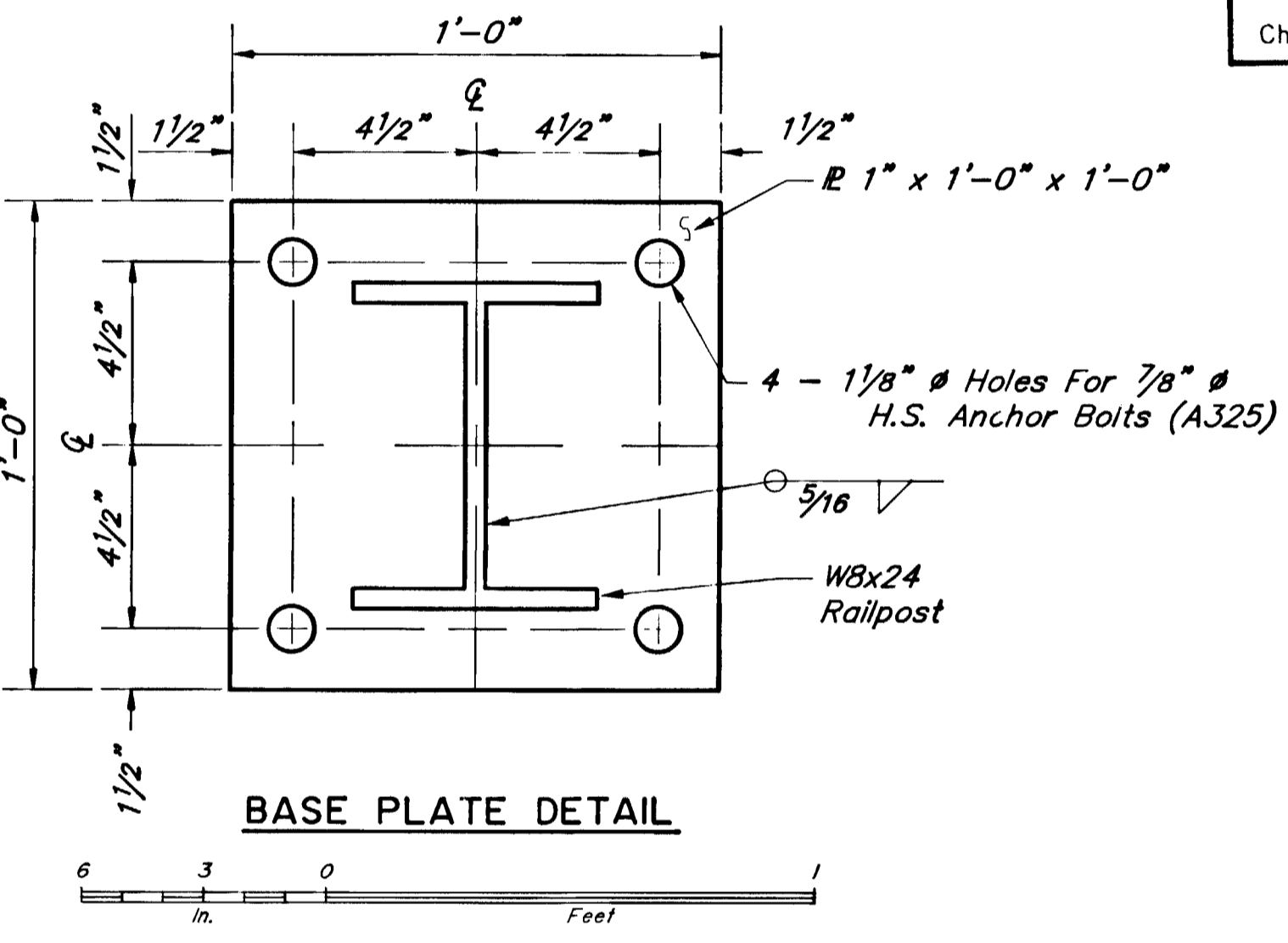
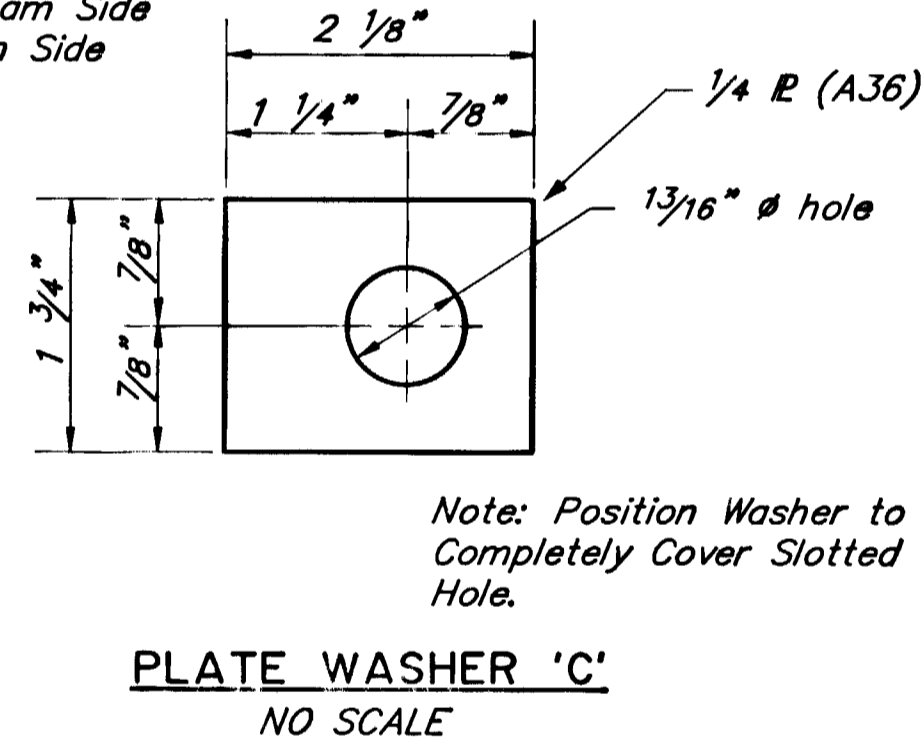
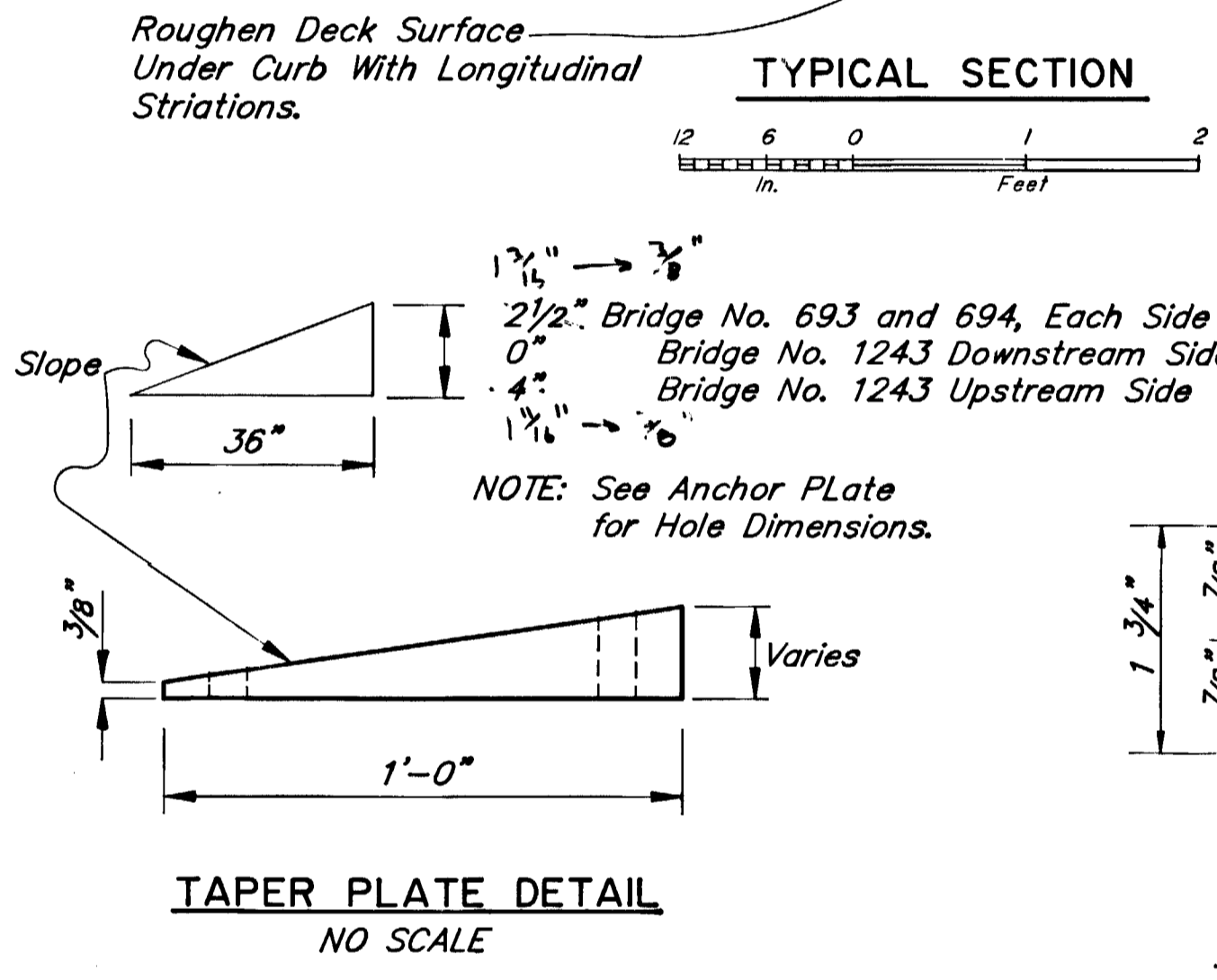
Tracings _____ Date _____

Checked _____ Date _____

CORRECTIONS TRANSFERRED



- NOTES**
- All railing, posts, anchor assemblies drain tubes and other steel components shall be galvanized after fabrication unless noted otherwise.
 - Remove existing bridge No. plate from existing railpost and attach to new railing with 4-3/16" ϕ x 1" ribbed neck carriage bolts with steel tamper-proof nuts (McMaster-Carr 90084A030 or equal), galvanized or cadmium plated.
 - Locate bridge number plates on right hand side of approaching traffic at each end as shown, (typ.).
 - All machine bolts shall have locking nuts or lock washers.
 - Railing expansion joints must be provided at 50' maximum intervals throughout the railing and at deck expansion joints. Railing shall be continuous over 2 posts minimum.
 - Railing expansion joints shall be located immediately adjacent to a rail post.
 - Posts shall be adjusted to a plumb position.
 - Curb concrete and associated reinforcing shall be incidental to metal bridge railing. Minimum concrete cover shall be 1 1/2". Reinforcing steel shall be epoxy coated grade 60.
 - Three beam guardrail transition "NESTED" sections shall be installed one section on each side of transition bracket, typical either end of bridge. Ref. Std. Dwg. G-29W or G-29S.
 - Drill 1/8" dia. holes through existing cast-in-place deck to install anchor bolts.
 - Drain tube installation only to Nenana River @ Windy Bridge No. 1243 at downstream side. Stagger drain spacing at alternate posts. Bevel drain tube at curb face.



PARKS HIGHWAY, MILE 216
S. C. O. #7

REHABILITATION

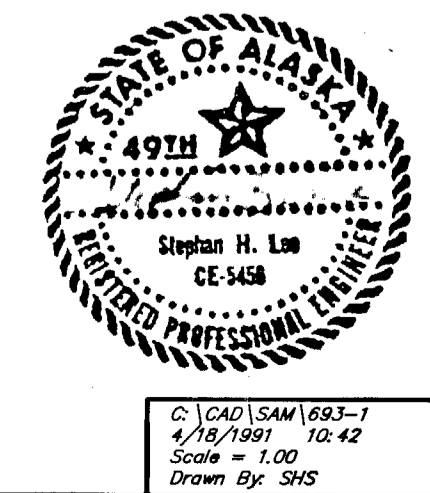
BRIDGE RAILING I

STATE of ALASKA
DEPARTMENT of TRANSPORTATION
and PUBLIC FACILITIES
JUNEAU, ALASKA

693, 694

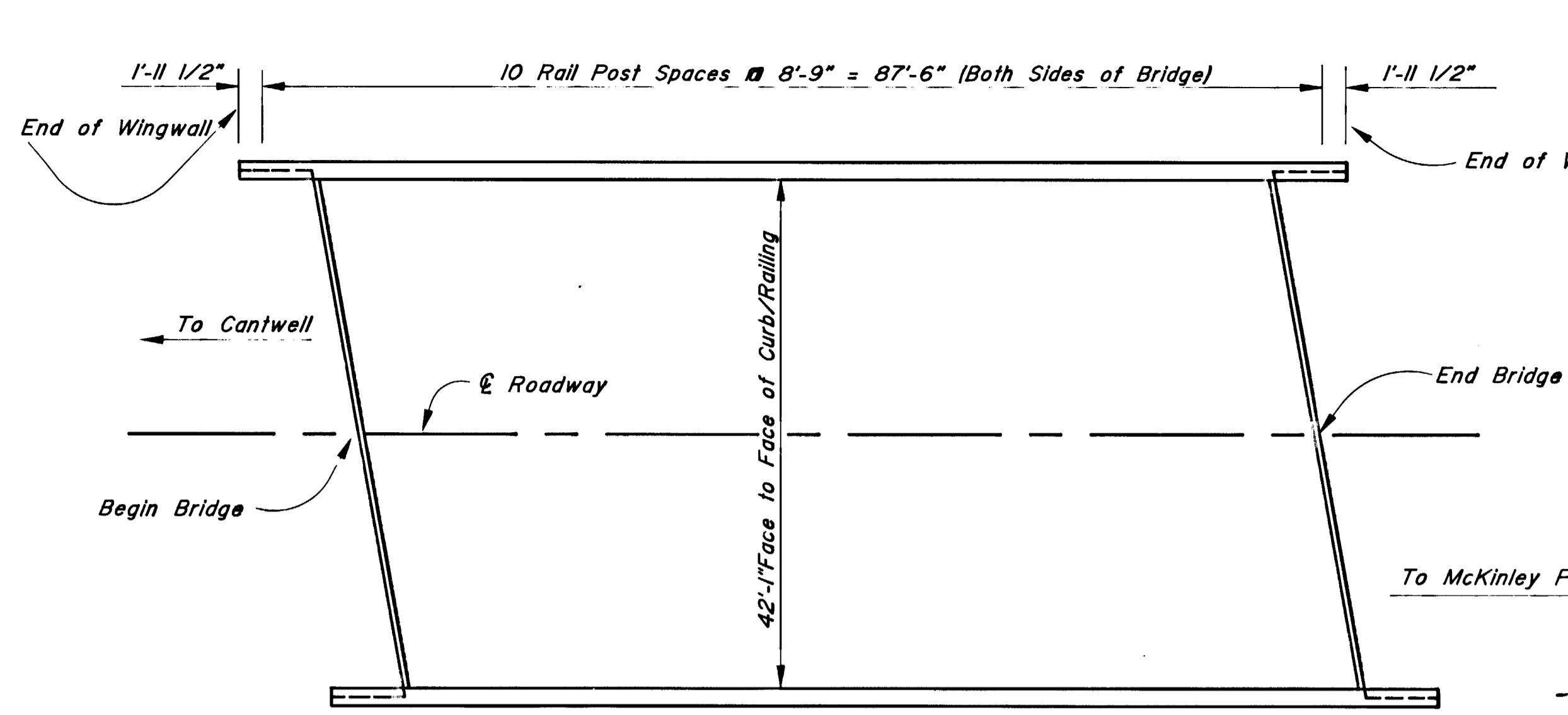
BRIDGE NO'S. 1243

DWG. NO. 1

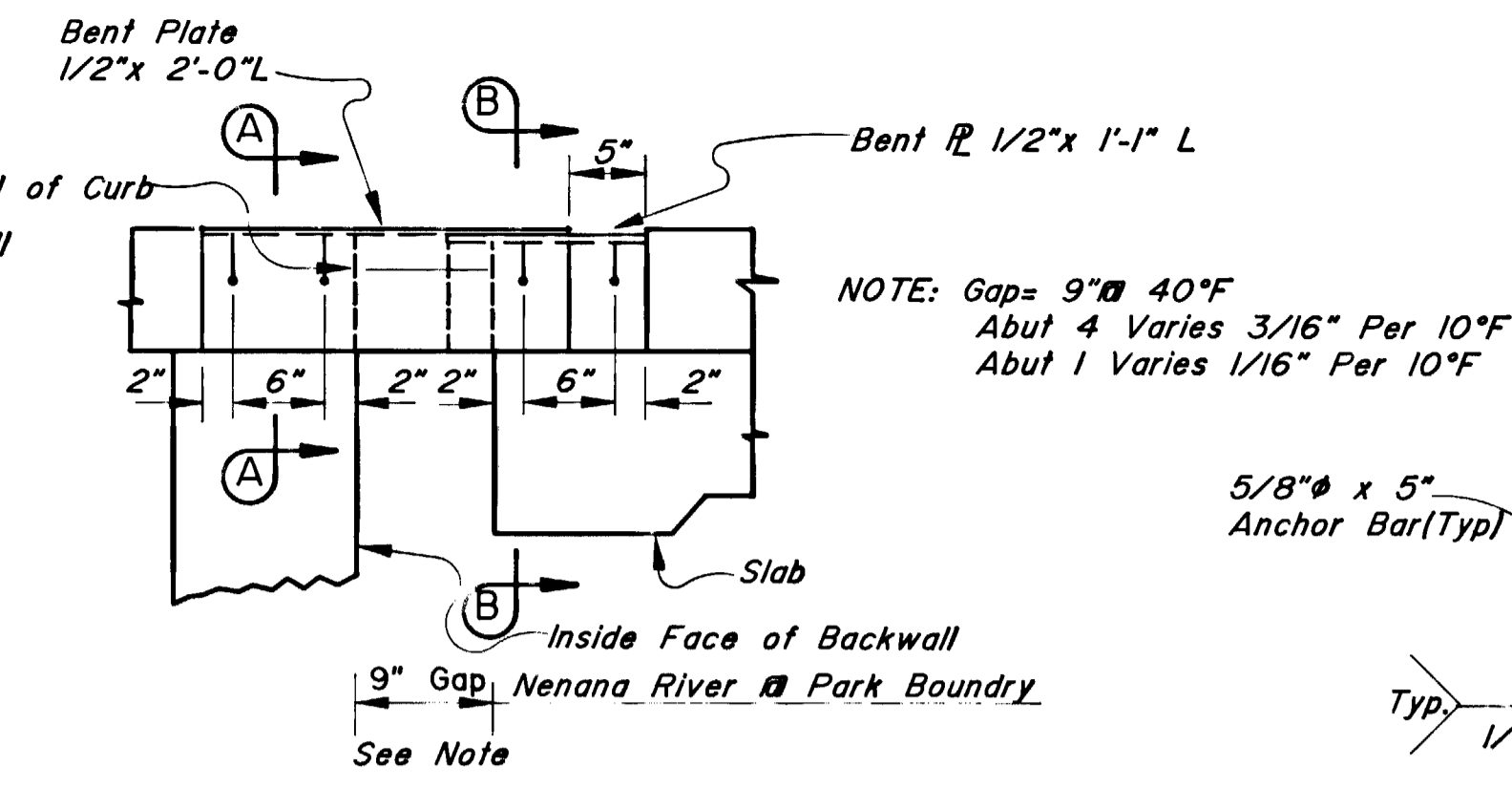


C:\CAD\LSAW\693-1
4/18/1991 10:42
Scale = 1:00
Drawn By: SHS

STATE	PROJECT DESIGNATION	YEAR	SHEET NO.	TOTAL SHEETS
ALASKA	1-0A4-3(7)	1991	21	26

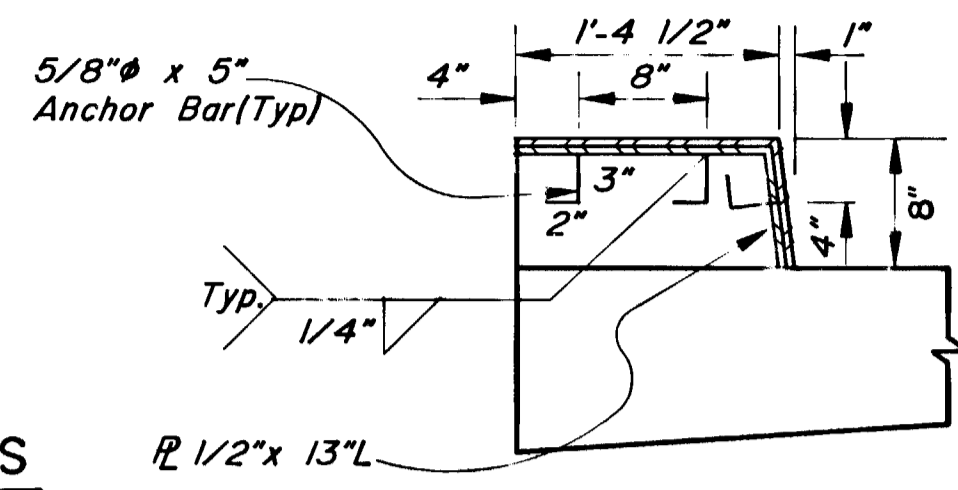


CARLO CREEK BRIDGE No. 693

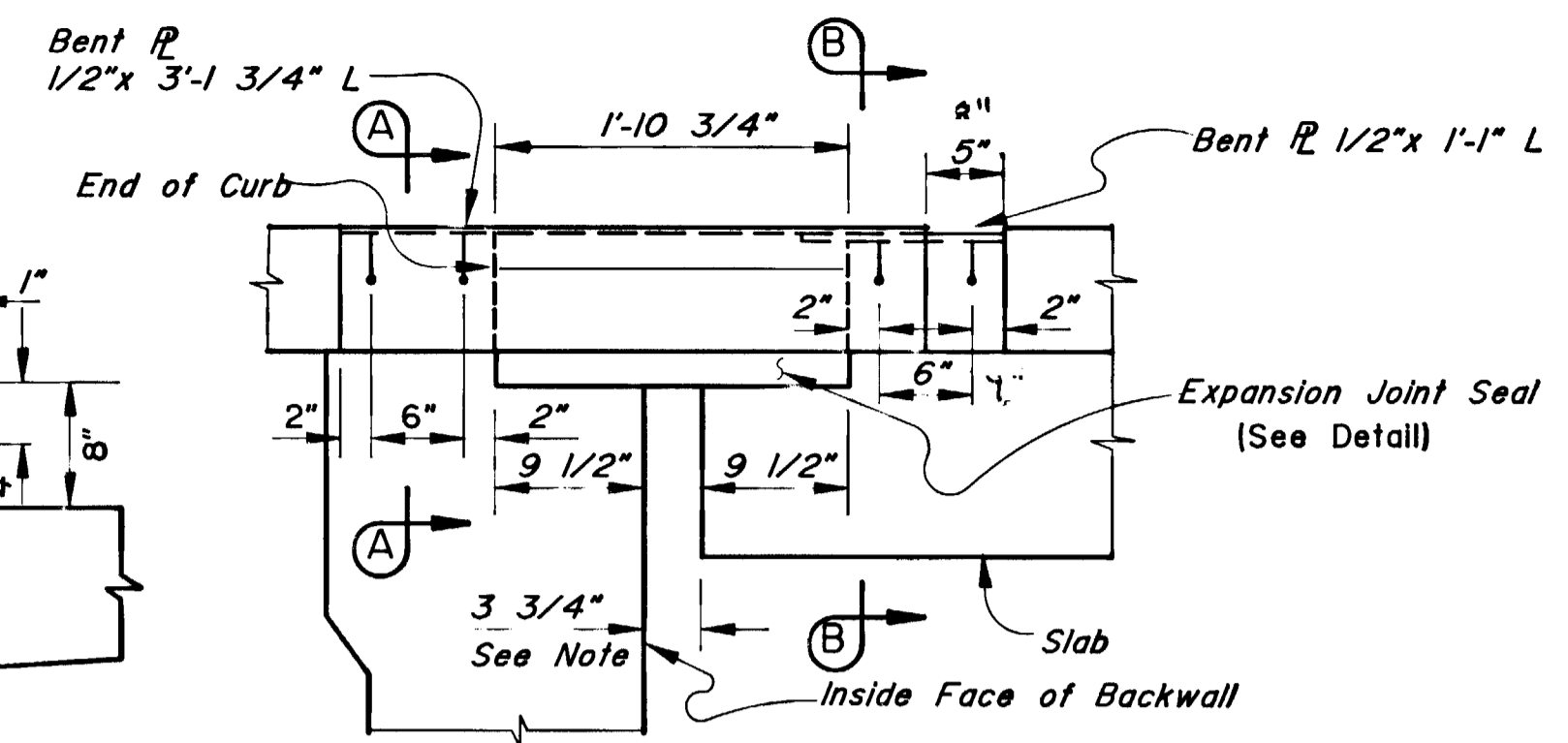


CURB DETAIL AT EXPANSION JOINTS
NENANA RIVER @ PARK BOUNDARY, BRIDGE No. 694

(BOTH ENDS) NO SCALE
NOTE: SLIDING R WAS NOT DESIGNED TO ACCOUNT FOR THE SKEW IN THE EXISTING BRIDGE EXPANSION JOINT. MINOR FIELD ADJUSTMENTS WERE MADE TO MAKE THE SLIDING R'S FIT.

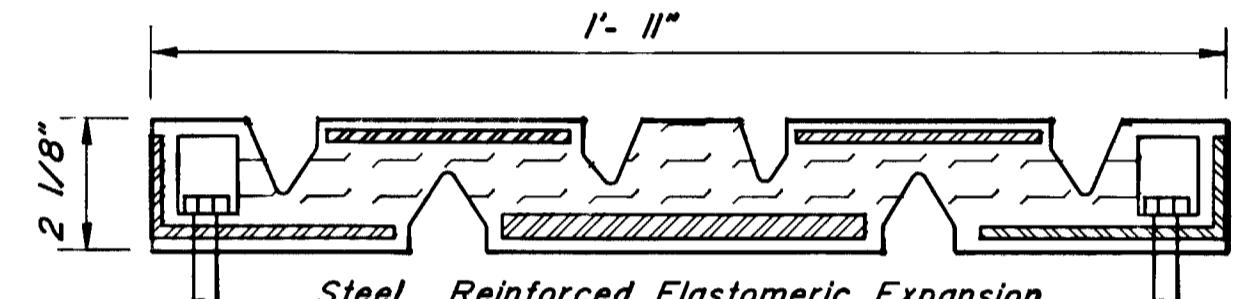


SECTION B-B
NO SCALE



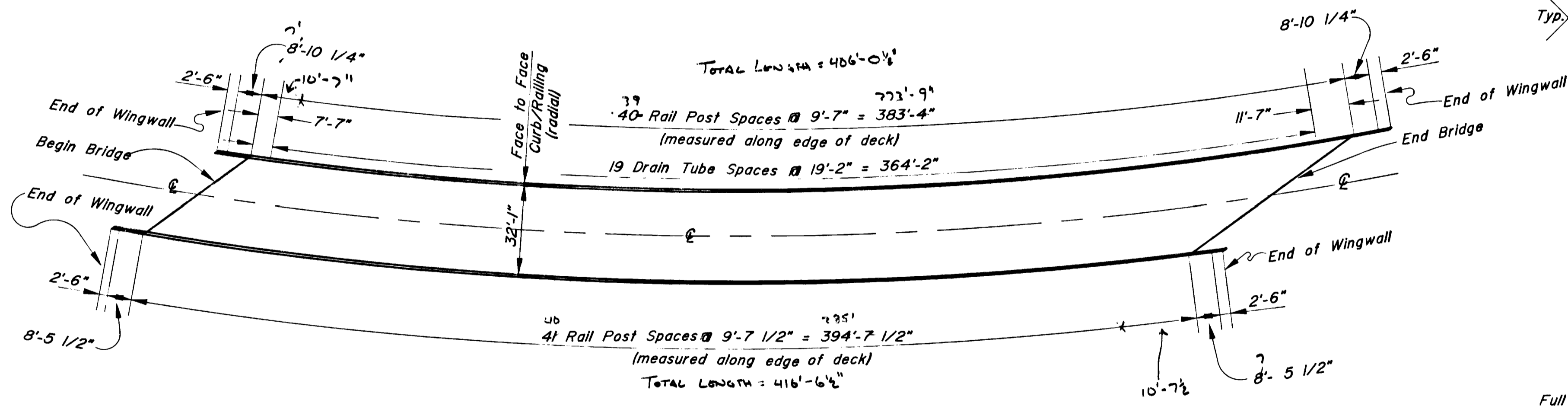
CURB DETAIL AT EXPANSION JTS.
NENANA RIVER AT WINDY, BRIDGE No. 1243

(BOTH ENDS) NO SCALE
NOTE: BENT R DID NOT FULLY COVER EXPANSION JOINT SEAL. BENT R WAS COVERED OVER SEAL AND CURB RAISED UP TO IT. STEEL PLATE WAS USED AS A RAMP BECAUSE BENT R SEAL + CONCRETE CURB. (EIGHT PIECES OF ~ 1/2 FT. TO 1 FT.)

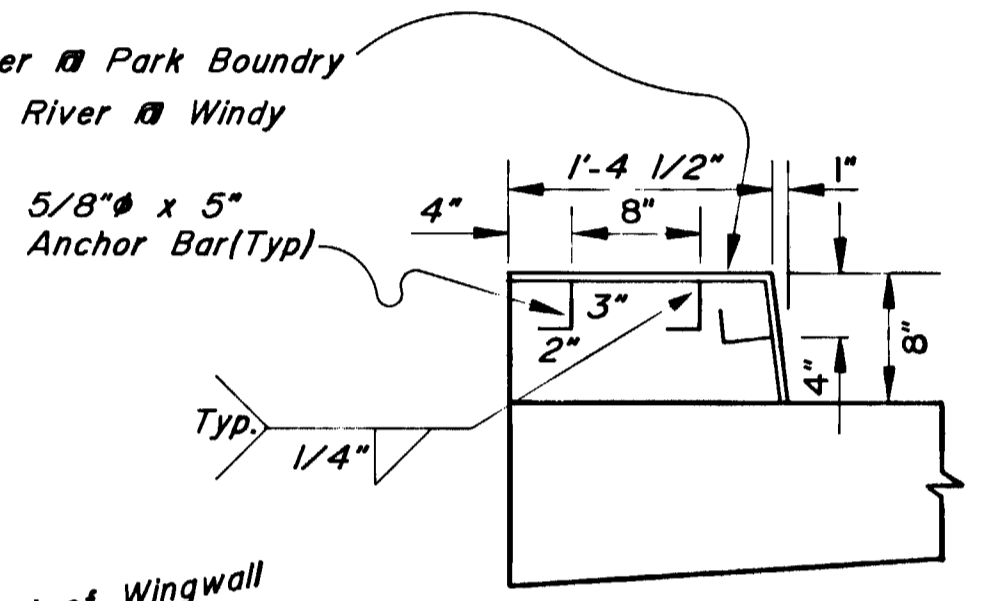


EXPANSION JOINT SEAL
NO SCALE

Steel Reinforced Elastomeric Expansion Joint Seal; Install According to the Manufacturer's Specifications and Special Provisions. Install at Both Ends For Nenana River @ Windy Bridge No. 1243

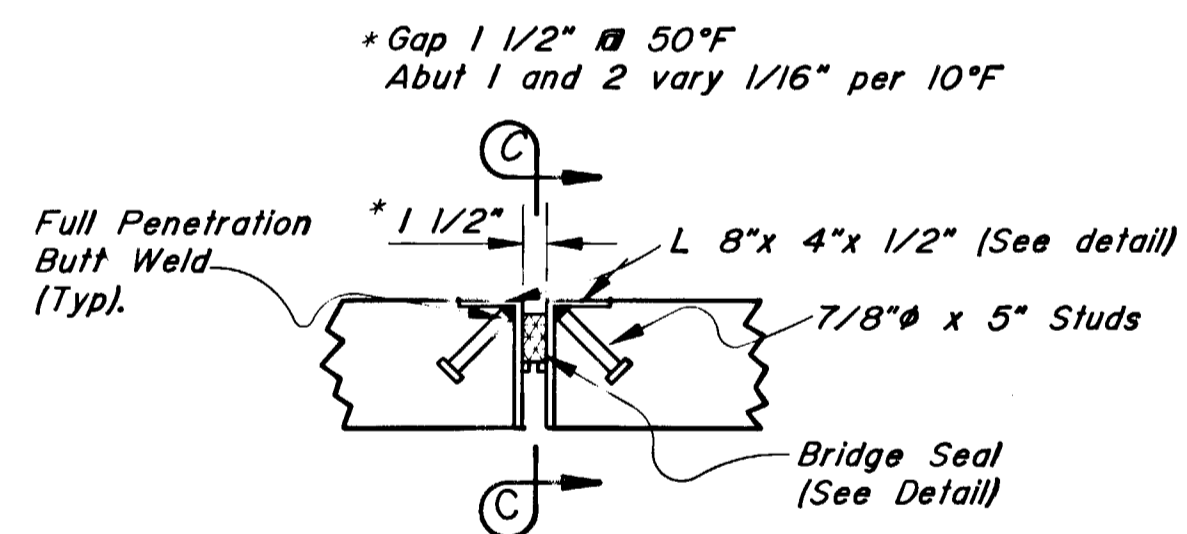


NENANA RIVER BRIDGE AT WINDY, BRIDGE No. 1243



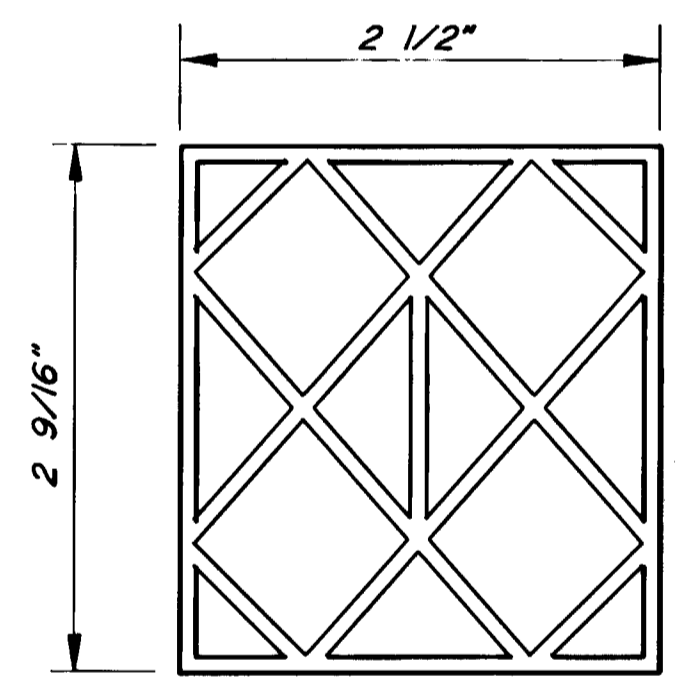
SECTION A-A
NO SCALE

Note: Rail Post not Shown for Clarity, Typ.



CURB DETAIL AT EXP. JOINT
CARLO CREEK, BRIDGE No. 693

(BOTH ENDS) NO SCALE
NOTE: CURB END R'S WERE NOT DESIGNED FOR THE SKEW IN THE EXISTING BRIDGE EXPANSION JOINT. MINOR FIELD ADJUSTMENTS WERE MADE TO MAKE END R'S FIT.



BRIDGE SEAL
NO SCALE

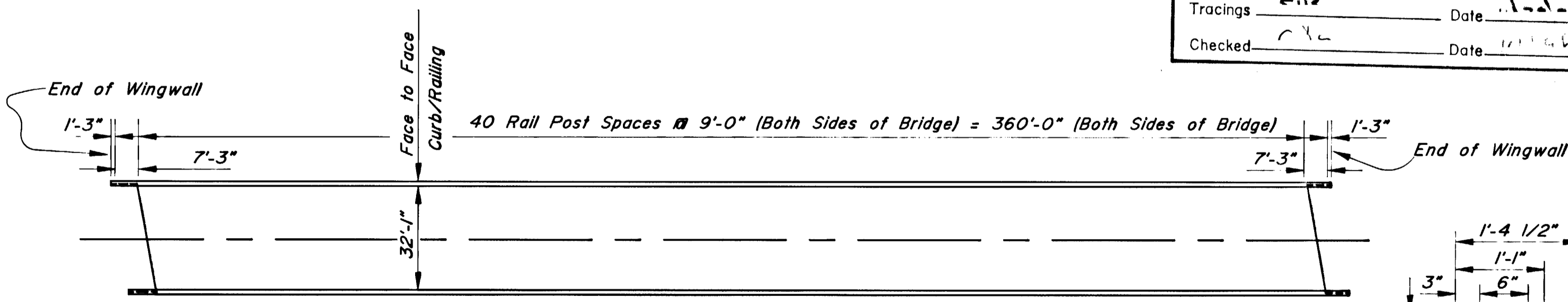
AS BUILT PLANS

Project Engineer _____ Date _____

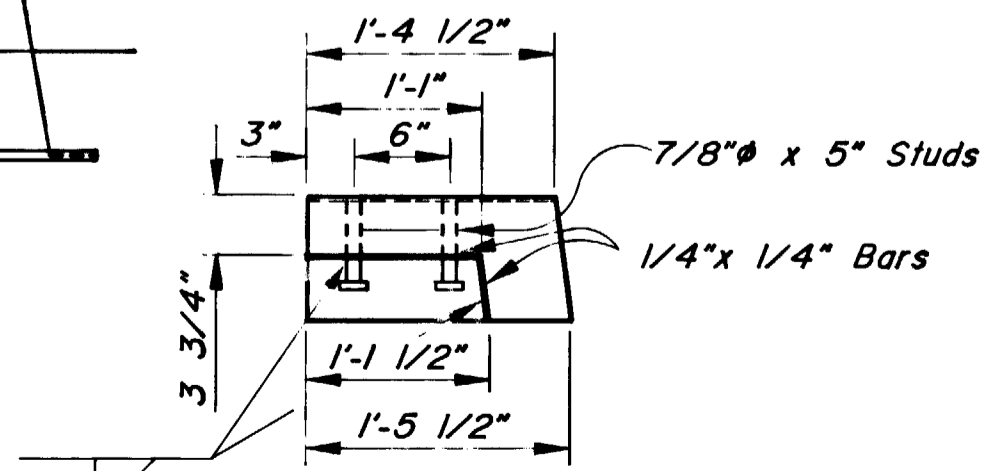
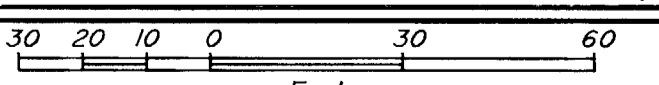
CORRECTIONS TRANSFERRED

Tracings _____ Date _____

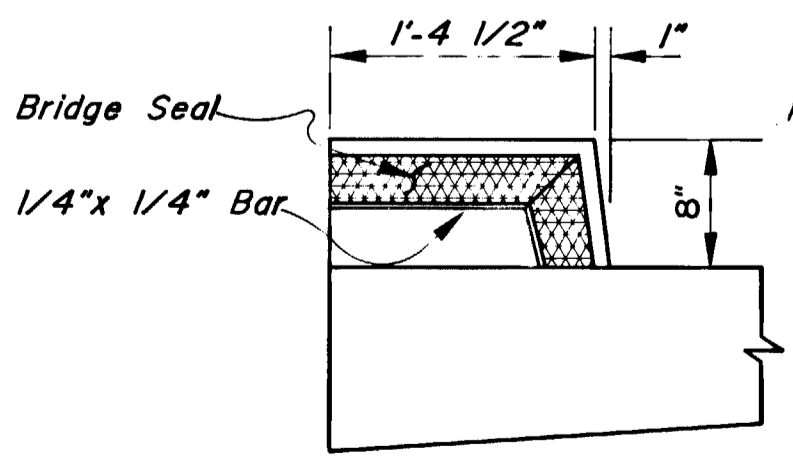
Checked _____ Date _____



NENANA RIVER BRIDGE AT PARK BOUNDARY, BRIDGE No. 694



ANGLE DETAIL
NO SCALE



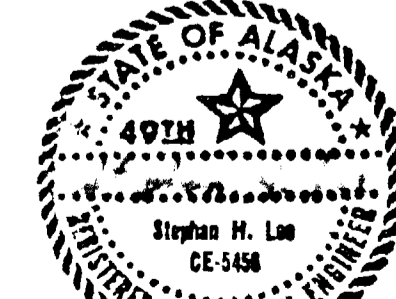
SECTION C-C
NO SCALE

PARKS HIGHWAY, MILE 216
REHABILITATION
BRIDGE RAILING 2

STATE of ALASKA
DEPARTMENT of TRANSPORTATION
and PUBLIC FACILITIES
JUNEAU, ALASKA



693, 694
BRIDGE NO'S. 1243
DWG. NO. 2



C:\CAD\SAM\693-2
4/18/99 B:48
Scale = 10:00
Drawn By: SHS

