

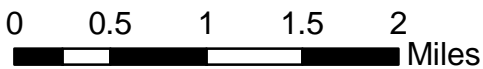
LOCATION MAP

MATERIAL SITE

KIANA AIRPORT

VICINITY MAP

LOCATION & VICINITY MAP



PROJECT SITE

Sec 4, 5, 6, 8, 9, 31 & 32
 T18N & T19N, R8W
 Kateel River Meridian

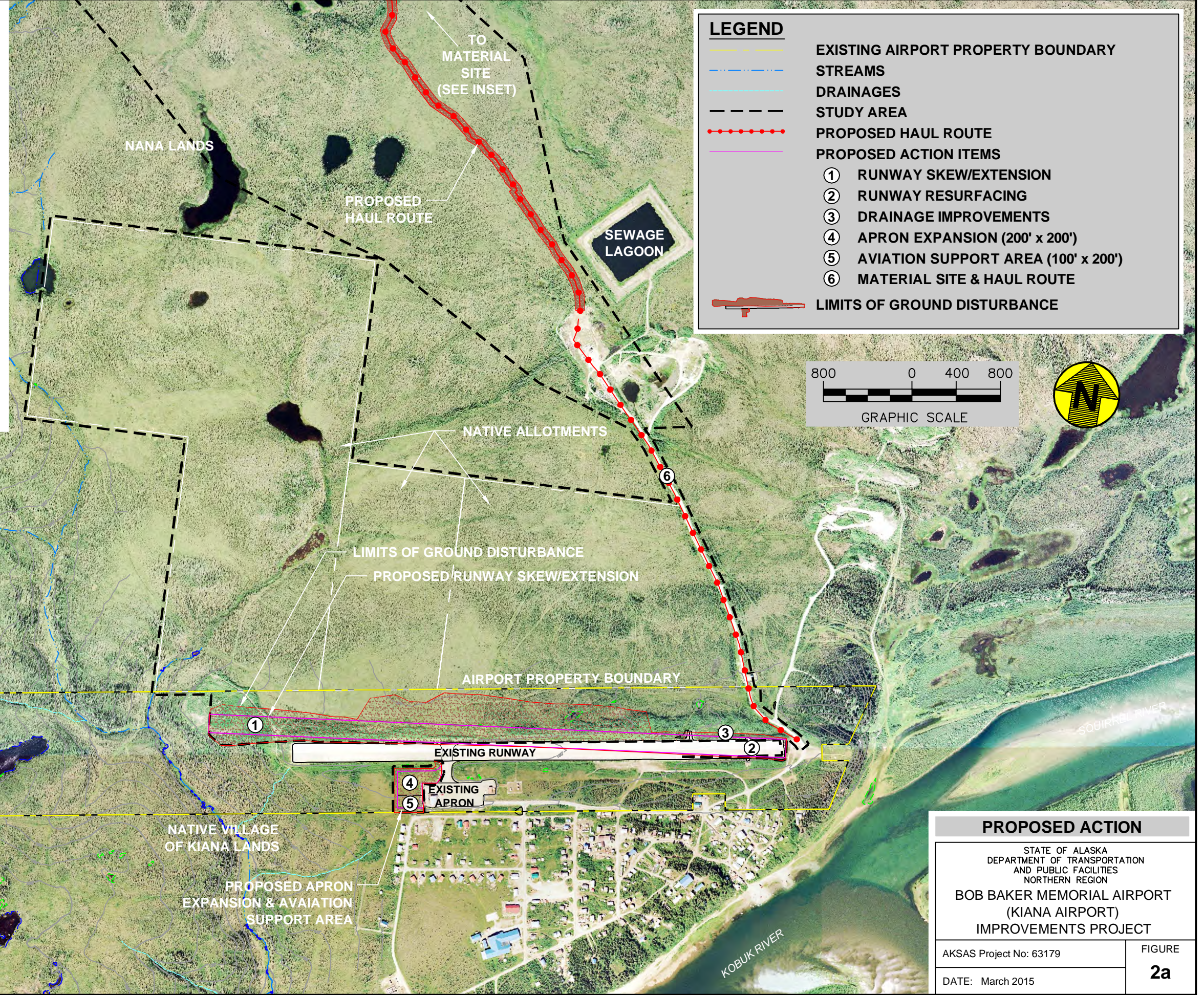
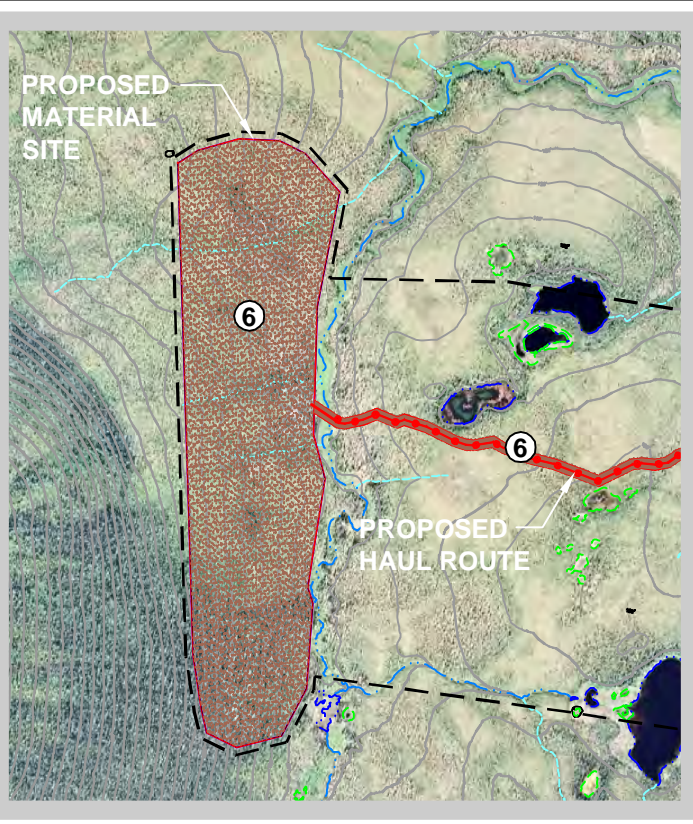
STATE OF ALASKA
 DEPARTMENT OF TRANSPORTATION
 AND PUBLIC FACILITIES
 NORTHERN REGION

**BOB BAKER MEMORIAL AIRPORT
 (KIANA AIRPORT)
 IMPROVEMENTS PROJECT**

AKSAS Project No: 63179

DATE: March 2015

FIGURE
1

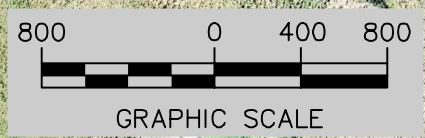


LEGEND

- EXISTING AIRPORT PROPERTY BOUNDARY
- STREAMS
- DRAINAGES
- STUDY AREA
- PROPOSED HAUL ROUTE
- PROPOSED ACTION ITEMS
- LIMITS OF GROUND DISTURBANCE

PROPOSED ACTION ITEMS

- ① RUNWAY SKEW/EXTENSION
- ② RUNWAY RESURFACING
- ③ DRAINAGE IMPROVEMENTS
- ④ APRON EXPANSION (200' x 200')
- ⑤ AVIATION SUPPORT AREA (100' x 200')
- ⑥ MATERIAL SITE & HAUL ROUTE



PROPOSED ACTION

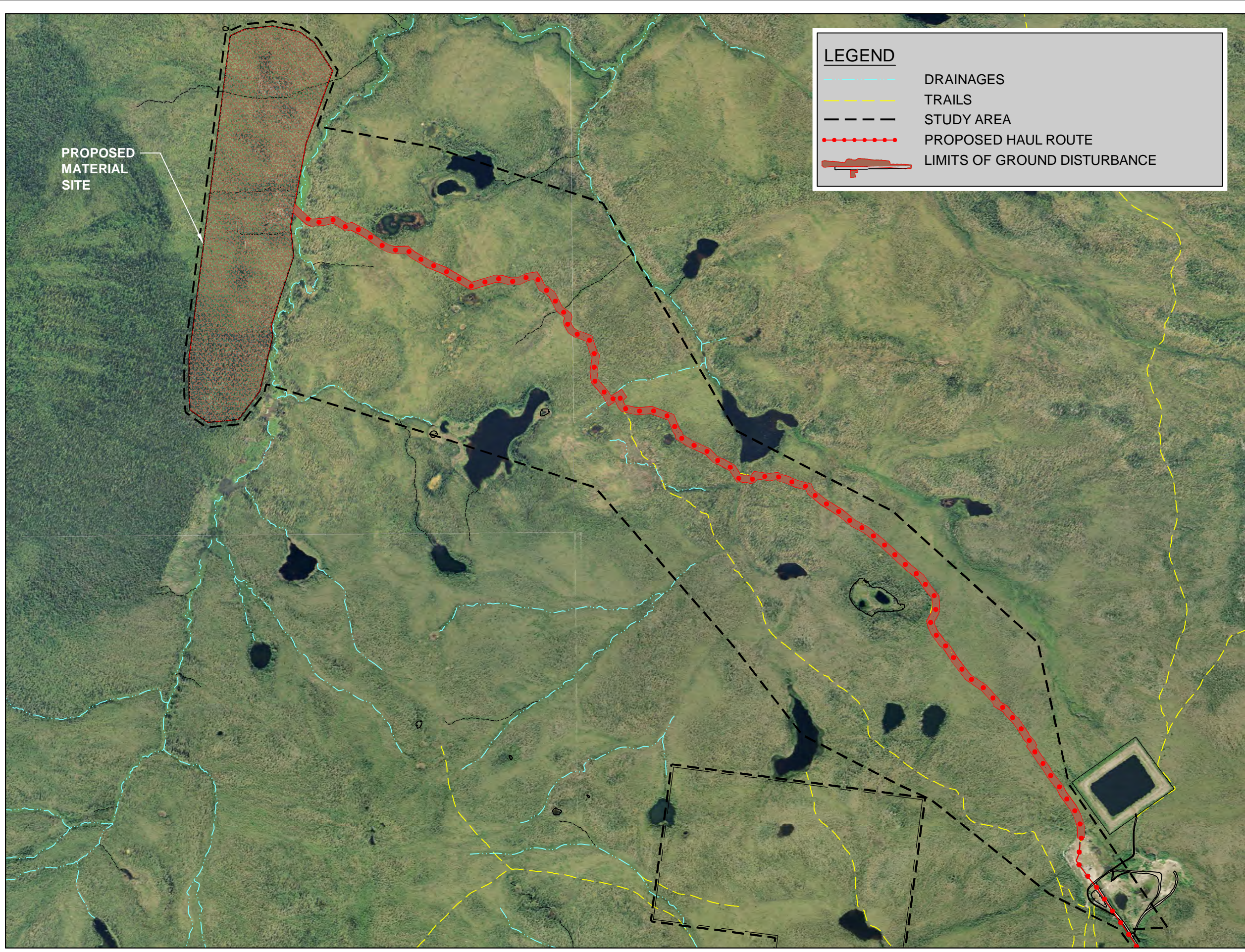
STATE OF ALASKA
DEPARTMENT OF TRANSPORTATION
AND PUBLIC FACILITIES
NORTHERN REGION

**BOB BAKER MEMORIAL AIRPORT
(KIANA AIRPORT)
IMPROVEMENTS PROJECT**

AKSAS Project No: 63179	FIGURE
DATE: March 2015	2a

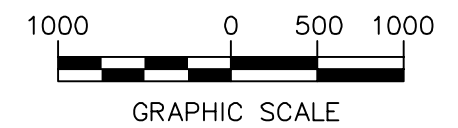
U:\204700215\Figures\EA\204700215_EA_Fig-02a.dwg

U:\204700215\Drawings\Figures\EA\204700215_EA_Fig-02b.dwg



LEGEND

- DRAINAGES
- TRAILS
- STUDY AREA
- PROPOSED HAUL ROUTE
- LIMITS OF GROUND DISTURBANCE



PROPOSED ACTION

STATE OF ALASKA
 DEPARTMENT OF TRANSPORTATION
 AND PUBLIC FACILITIES
 NORTHERN REGION
**BOB BAKER MEMORIAL AIRPORT
 (KIANA AIRPORT)
 IMPROVEMENTS PROJECT**

AKSAS Project No: 63179
 DATE: March 2015

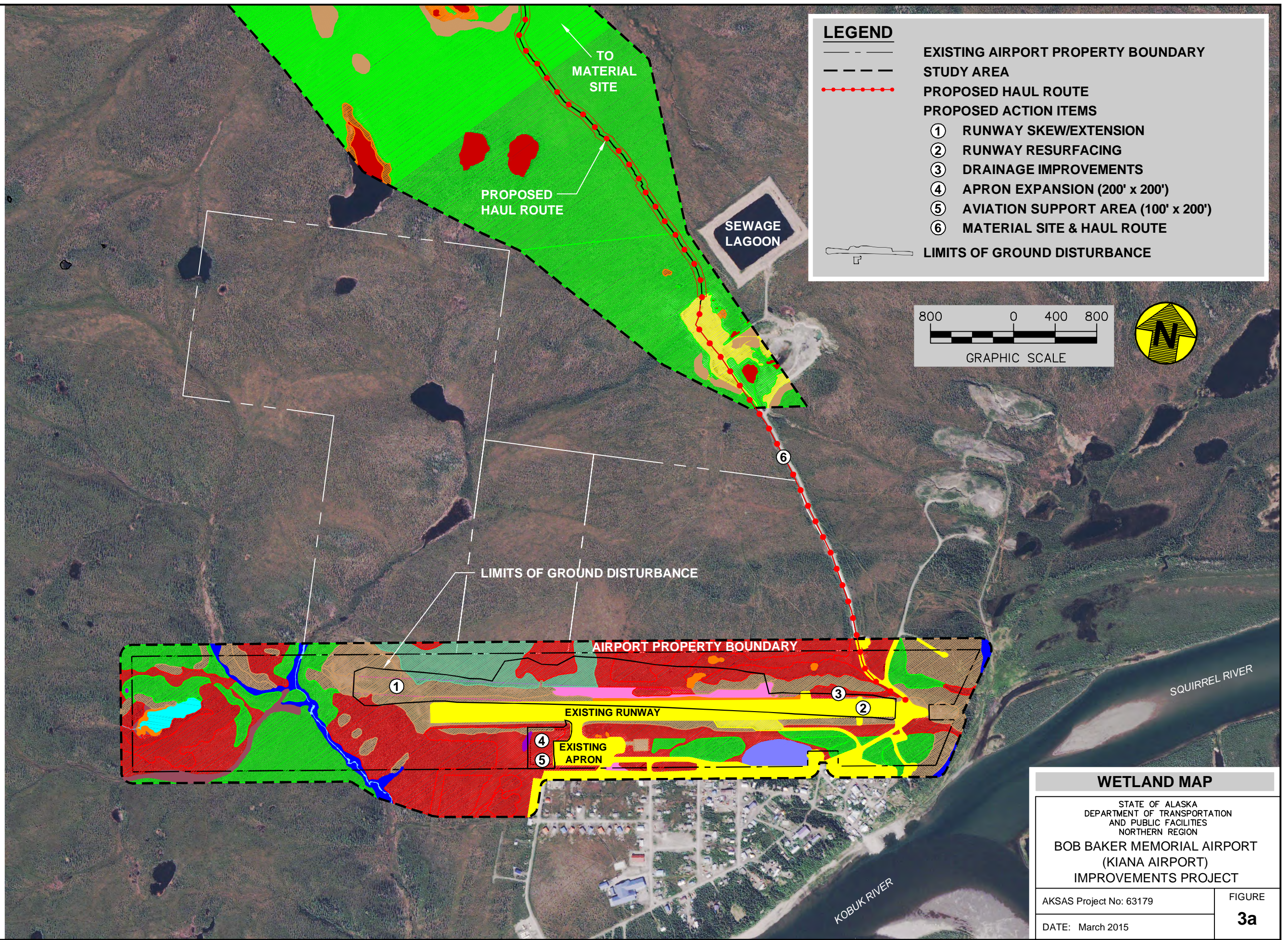
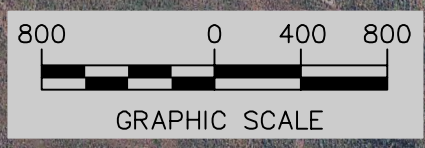
FIGURE
2b

CLASSIFICATION TYPE

- PEM
- PEM1B
- PEM1E
- PEM1F
- PEM1H
- PF04B
- PSS
- PSS1
- PSS1B
- PSS1/3B
- PSS1/4B
- PSS1C
- PSS3/1B
- PUB
- PUBH
- R2SB
- R3UB
- R3UBH
- Upland
- Us - Disturbed

LEGEND

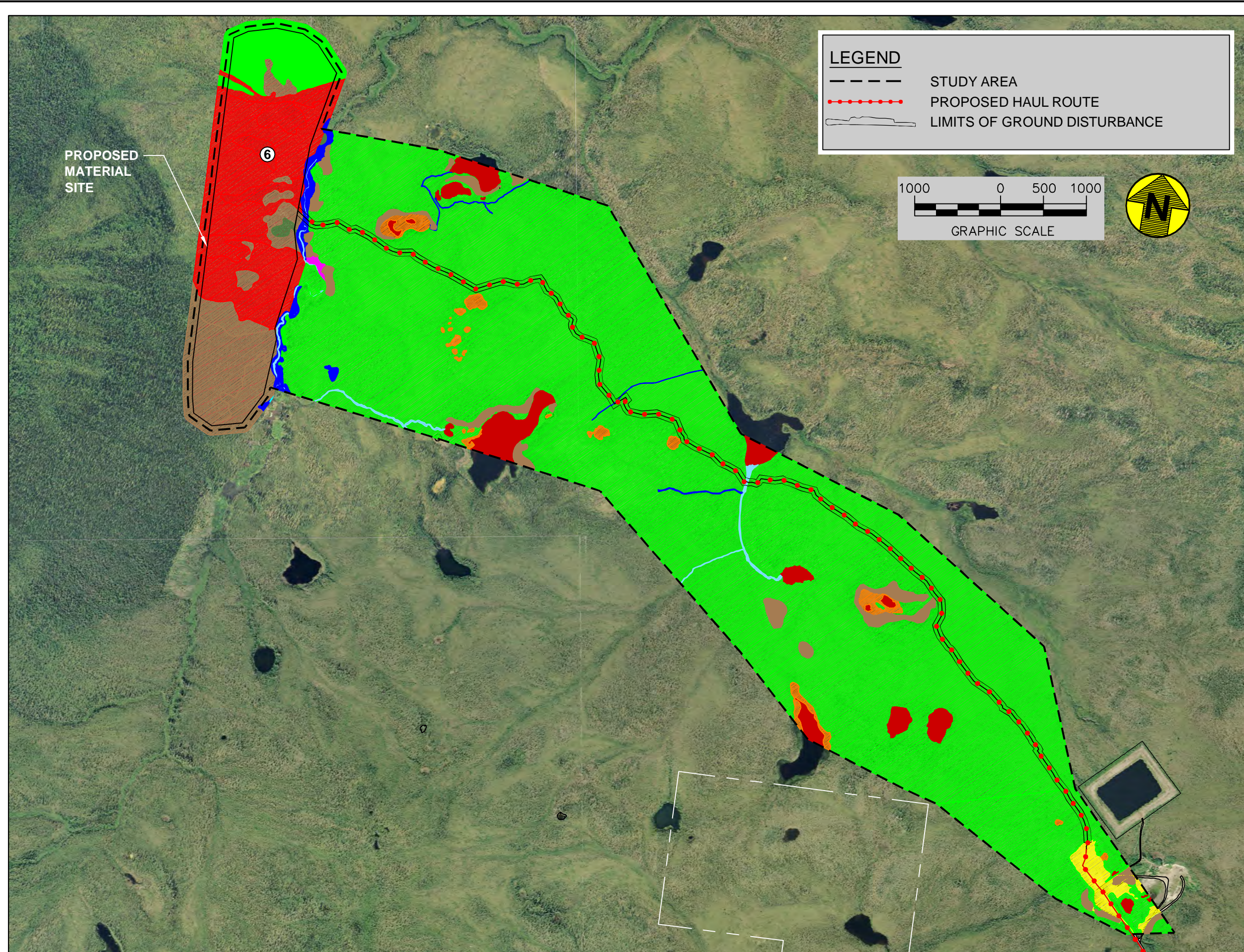
- EXISTING AIRPORT PROPERTY BOUNDARY
- STUDY AREA
- PROPOSED HAUL ROUTE
- PROPOSED ACTION ITEMS**
- ① RUNWAY SKEW/EXTENSION
- ② RUNWAY RESURFACING
- ③ DRAINAGE IMPROVEMENTS
- ④ APRON EXPANSION (200' x 200')
- ⑤ AVIATION SUPPORT AREA (100' x 200')
- ⑥ MATERIAL SITE & HAUL ROUTE
- LIMITS OF GROUND DISTURBANCE



WETLAND MAP	
STATE OF ALASKA DEPARTMENT OF TRANSPORTATION AND PUBLIC FACILITIES NORTHERN REGION	
BOB BAKER MEMORIAL AIRPORT (KIANA AIRPORT) IMPROVEMENTS PROJECT	
AKSAS Project No: 63179	FIGURE
DATE: March 2015	3a

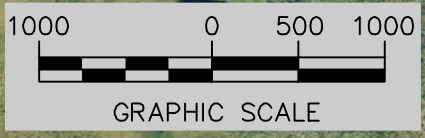
U:\204700215\Drawings\EA\204700215_EA_Fig-03a.dwg

U:\204700215\Drawings\EA\204700215_EA_Fig-03b.dwg



LEGEND

- STUDY AREA
- PROPOSED HAUL ROUTE
- LIMITS OF GROUND DISTURBANCE



CLASSIFICATION TYPE

[Orange hatched]	PEM
[Pink]	PEM1B
[Brown]	PEM1E
[Purple]	PEM1F
[Orange]	PEM1H
[Blue]	PF04B
[Green hatched]	PSS
[Magenta]	PSS1
[Red hatched]	PSS1B
[Black hatched]	PSS1/3B
[Light green hatched]	PSS1/4B
[Blue]	PSS1C
[Light blue hatched]	PSS3/1B
[Red]	PUB
[Cyan]	PUBH
[Dark blue]	R2SB
[Light blue]	R3UB
[Light blue]	R3UBH
[Brown hatched]	Upland
[Yellow]	Us - Disturbed

WETLAND MAP

STATE OF ALASKA
DEPARTMENT OF TRANSPORTATION
AND PUBLIC FACILITIES
NORTHERN REGION

**BOB BAKER MEMORIAL AIRPORT
(KIANA AIRPORT)
IMPROVEMENTS PROJECT**

AKSAS Project No: 63179	FIGURE 3b
DATE: March 2015	