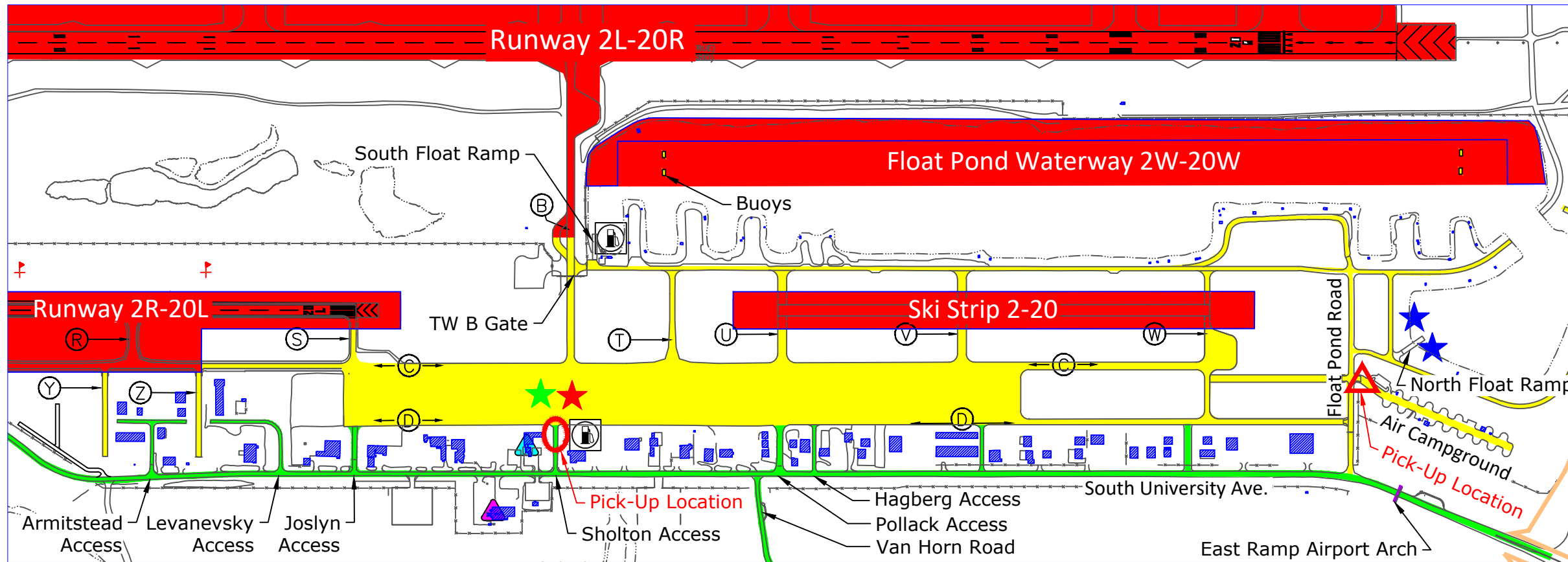


# KNOW BEFORE YOU GO!

For Additional Information: Contact FAI Operations 907-474-2552



## Legend

- **Tower Clearance Required** – Any access to the surfaces depicted in RED requires clearance from the tower, (Aircraft Use Only). These surfaces are marked with red hold signs and yellow hold lines ===== painted across access points. Do not cross without tower clearance. Entering these areas without clearance will result in severe penalties and could cause an aircraft accident.
  - **Aircraft Operations Area.** Use extreme caution in areas depicted in Yellow. Aircraft always have the right of way and may be behind you. Always take the most direct route to your destination. Maximum Speed Limit is 20 mph. Taxiway Delta is NOT to be used as a vehicle roadway. Except for short distances, use University Avenue.
  - **Public Access Roads** are depicted in Green.
- Aircraft Fuel (Self Service)
  - FAA Control Tower
  - FAA Flight Service Station
  - Taxiway
- Transient Aircraft Parking**
- Non-Electric (Row 10)
  - Electric (Rows 11-13)
  - Float Pond (Water Spaces: T1-T4  
Land Spaces: 160-163)

## KEEP AN EYE ON FAI

Report Suspicious or Unauthorized Activity

**(907) 474-2530 or 911**



## Authorized Pick-up Locations

- Air Campground accessed via S. University Ave and Float Pond Road
- Pilot Lounge accessed via S. University Ave and Sholton Access

**Pilots: When repositioning on the East Ramp give Ground Control a courtesy call on 121.9**

**Aircraft Transient Parking Available!  
Contact Reef Parking for Rates  
(907) 455-4571**



**Created in cooperation with the  
Fairbanks General Aviation Association**

## **FAI East Ramp Orientation & Safety Information**

Welcome to the Fairbanks East Ramp:  
The East Ramp is an Aircraft Operations Area.  
Access is limited to east side tenants,  
transient pilots, escorted guests and other  
persons authorized by Airport Management.

For information regarding access to this area  
call (907) 474-2530



**Get a copy of this info  
on your mobile device!**



@FairbanksInternationalAirport



@Fly\_Fairbanks

**FAA Tower Clearance is Required  
Before Crossing**

**B 4-22**

**CONTROLLED ACCESS AREA**  
DO NOT PASS THIS POINT WITHOUT FAA TOWER CLEARANCE

Fairbanks Airport  
Speed Limit  
**MAXIMUM  
20 MPH**

**SPEED  
LIMIT  
20**

**YIELD TO AIRCRAFT**

Keep in mind that an aircraft may be behind you

**REPORT HAZARDOUS  
WILDLIFE TO  
AIRPORT COMMUNICATIONS  
(907) 474-2530**

**KEEP DOGS AND  
AIRCRAFT SAFE!**



**AIRCRAFT AND LOOSE DOGS ARE A  
DEADLY COMBINATION**

DOGS MUST BE RESTRAINED AT ALL TIMES

REMOVE AND DISPOSE OF ALL WASTE IN  
TRASH RECEPTACLES

REPORT ANY LOOSE ANIMALS TO THE AIRPORT  
AT (907) 474-2530