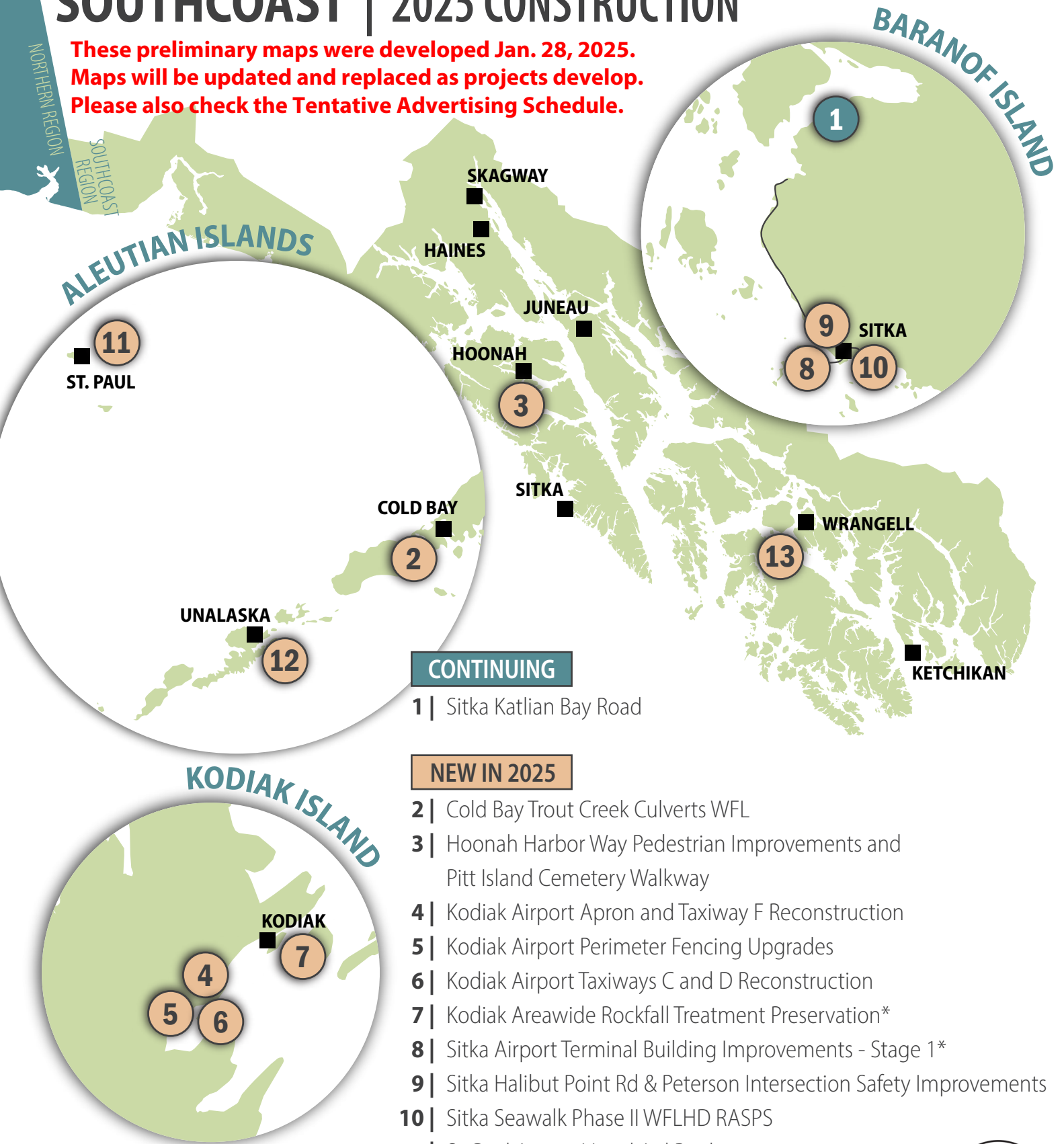


SOUTHCOAST | 2025 CONSTRUCTION

These preliminary maps were developed Jan. 28, 2025.
 Maps will be updated and replaced as projects develop.
 Please also check the Tentative Advertising Schedule.



CONTINUING

- 1 | Sitka Katlian Bay Road

NEW IN 2025

- 2 | Cold Bay Trout Creek Culverts WFL
- 3 | Hoonah Harbor Way Pedestrian Improvements and Pitt Island Cemetery Walkway
- 4 | Kodiak Airport Apron and Taxiway F Reconstruction
- 5 | Kodiak Airport Perimeter Fencing Upgrades
- 6 | Kodiak Airport Taxiways C and D Reconstruction
- 7 | Kodiak Areawide Rockfall Treatment Preservation*
- 8 | Sitka Airport Terminal Building Improvements - Stage 1*
- 9 | Sitka Halibut Point Rd & Peterson Intersection Safety Improvements
- 10 | Sitka Seawalk Phase II WFLHD RASPS
- 11 | St. Paul Airport Visual Aid Replacement
- 12 | Unalaska Taxiway and Apron Rehabilitation*
- 13 | Wrangell Airport Gages and Security Upgrades

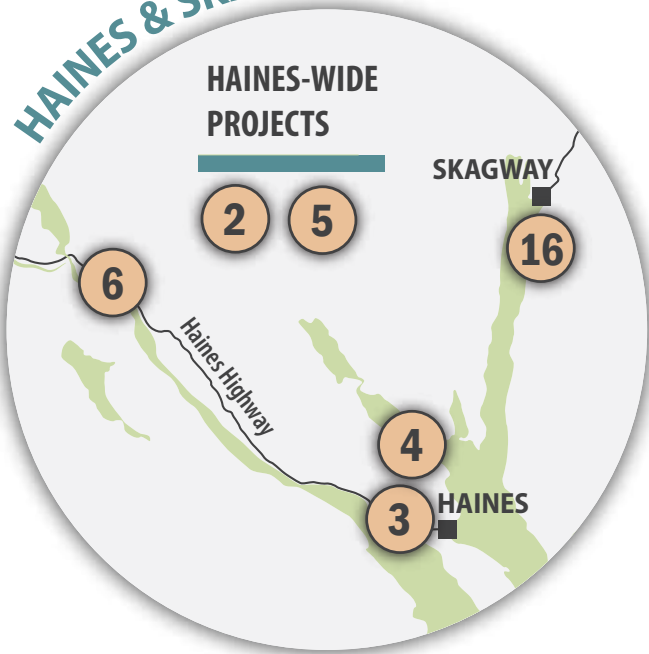
Last updated 1/22/25. See additional Southcoast map for Juneau, Ketchikan, Haines, and Skagway projects.

*Indicates projects that will be advertised later in the season and may only see preliminary construction in 2025

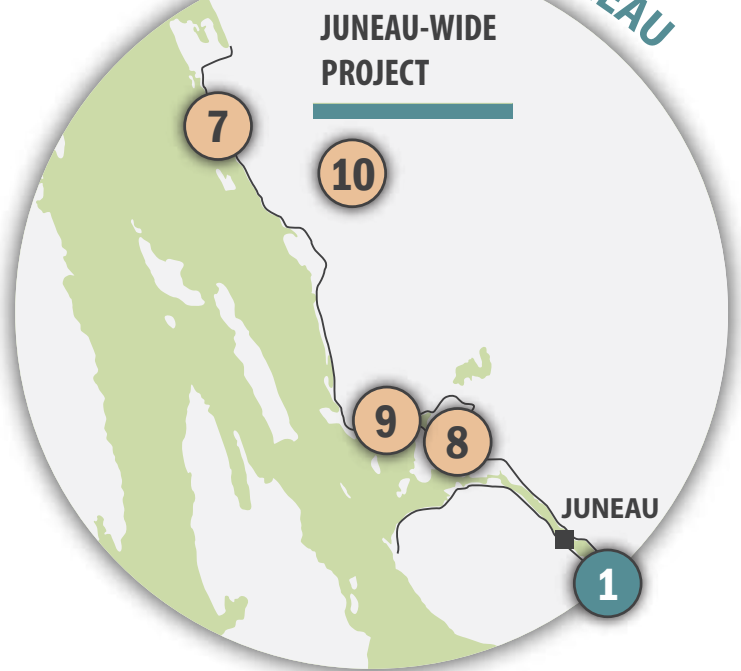


SOUTHCOAST | 2025 CONSTRUCTION

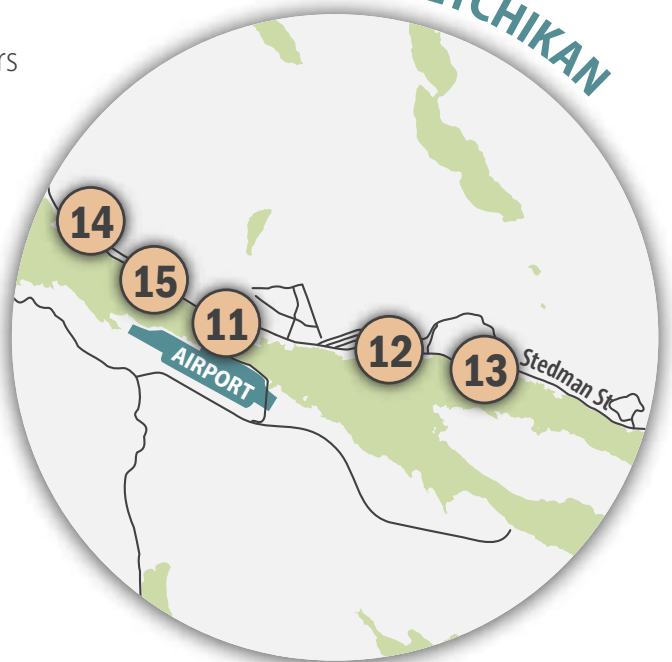
HAINES & SKAGWAY



JUNEAU



KETCHIKAN



CONTINUING IN 2025

- 1 | Juneau Douglas Highway Resurface and Sidewalk Repairs

NEW IN 2025

- 2 | Haines Anadromous Culverts*
- 3 | Haines Highway MP 1-9
- 4 | Haines Lutak Road*
- 5 | Haines Roadways and Culverts*
- 6 | Haines Hwy Reconstruction MP 20-25
- 7 | Juneau Bridget Cove Creek Culvert Replacement
- 8 | Juneau Glacier Highway Chip Seal - Industrial to Roundabout*
- 9 | Juneau Waydelich Creek: Upper & Lower Wall Repairs
- 10 | Juneau Roadways and Culverts*
- 11 | Ketchikan Ferry Terminal Improvements - Phase II
- 12 | Ketchikan Sayles/Gorge Street Viaduct Improvement
- 13 | Ketchikan HSIP Stedman & Deermount Street Intersection Safety Improvements
- 14 | Ketchikan N. Tongass Highway Resurface: Airport Ferry Terminal to Ward Creek Bridge Stage I
- 15 | Ketchikan Wolfe Point Slope Stability Improvements
- 16 | Skagway State Street Pavement Rehabilitation

*Indicates projects that will be advertised later in the season and may only see preliminary construction in 2025

Last updated 1/22/25. See additional map for more Southcoast projects.

