

Soldotna: Redoubt Avenue to Smith Way Rehabilitation



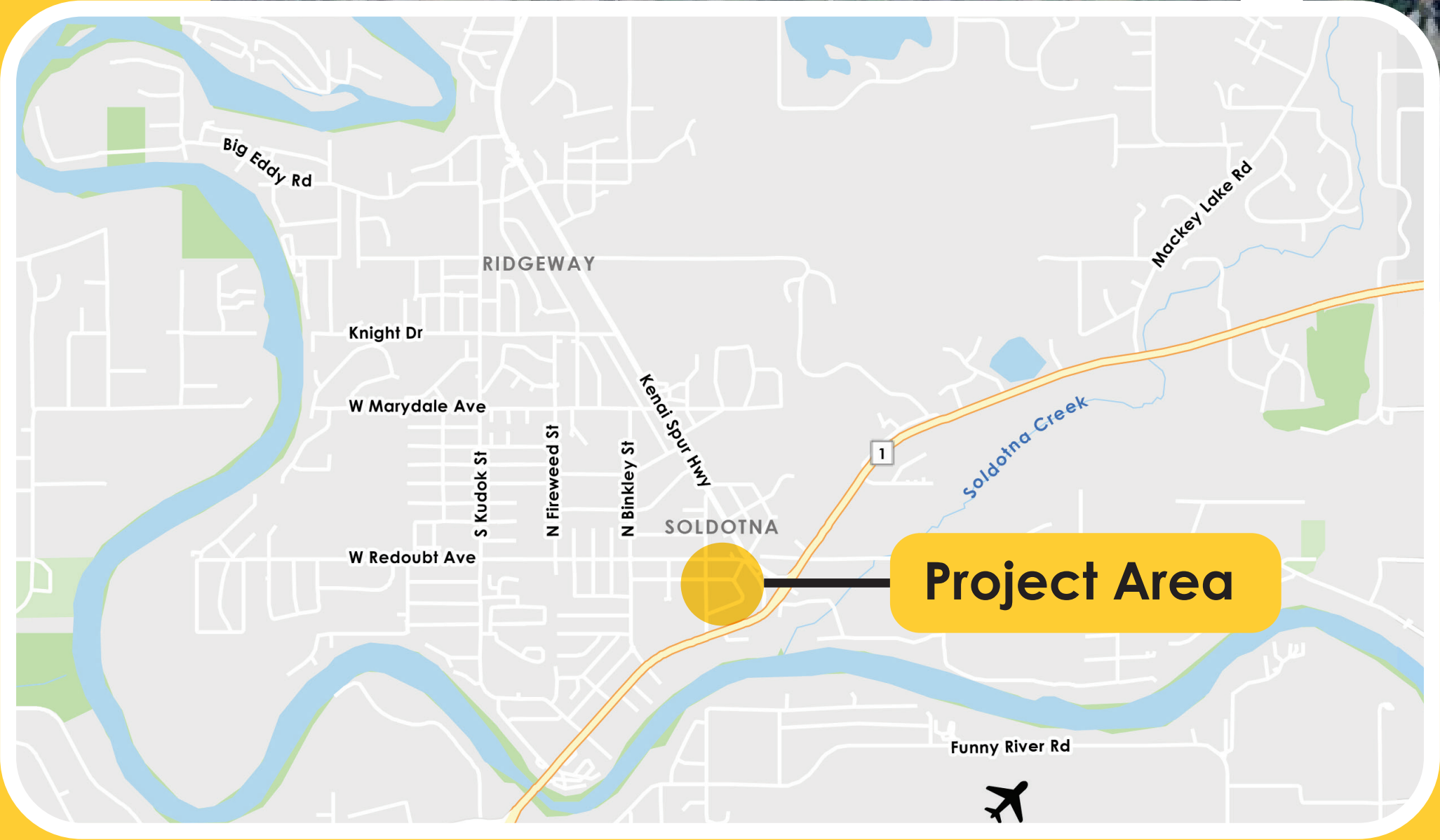
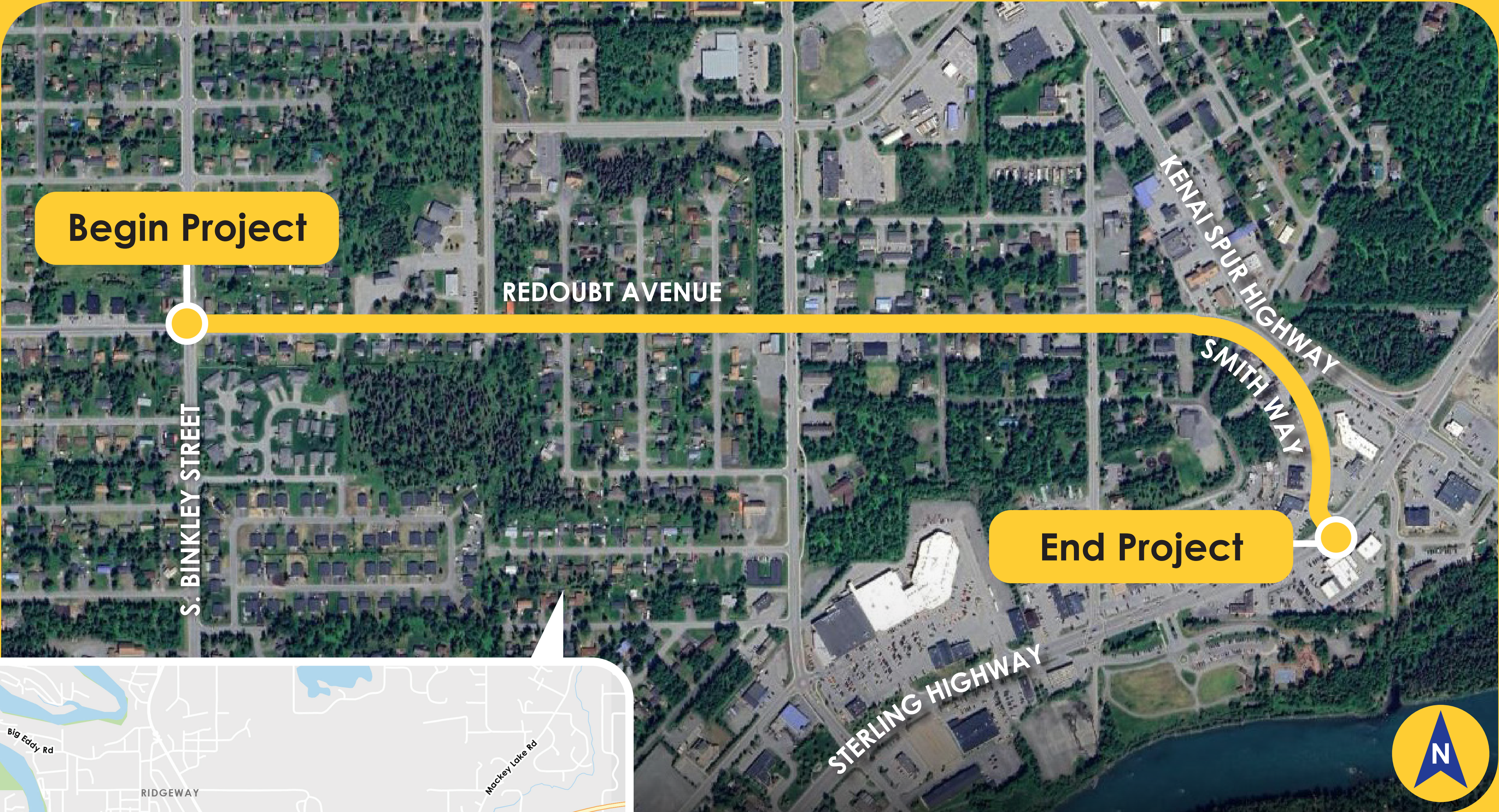
Welcome!

Alaska Department of Transportation & Public Facilities (DOT&PF), in cooperation with the City of Soldotna, is updating Redoubt Avenue (east of N Binkley Street) and Smith Way to improve overall experience and safety for all users, including pedestrians, bicyclists, and motorists of all ages and abilities.



Learn about the project at redoubtsmithrehab.com.

Project Map



Soldotna Vicinity Map

Purpose

- To improve safety
- Reduce maintenance costs
- Extend the service life of the roadway and pedestrian facilities

Need



Safety & Usability:

The pavement has deteriorated and is potentially unpredictable due to the instability of the materials beneath their surface.



Accessibility:

The sidewalks and curbs don't currently provide wheelchair ramps or other features that provide ease of access for all users.

Project Highlights

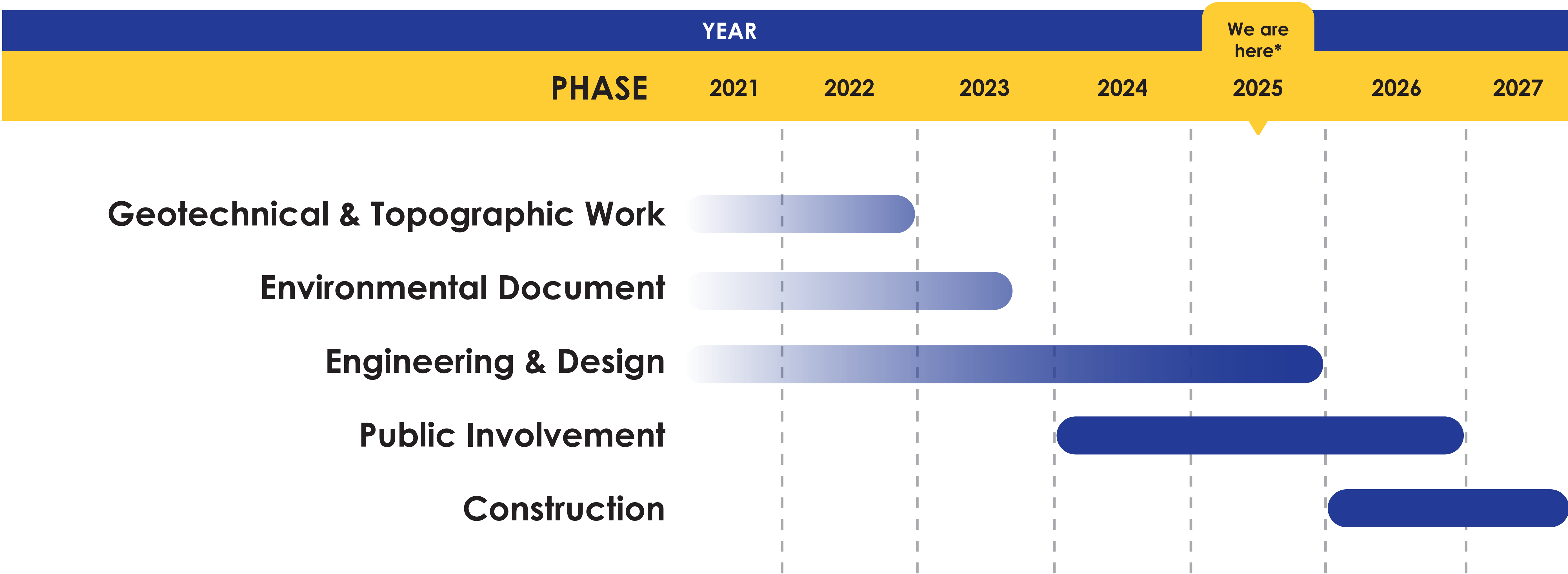
With a focus on safety for all users, project improvements include:

- Replacing the roadway pavement structural sections
- Widening sidewalks and bike lanes
- Adding nonmotorized safety buffers between the roadway and sidewalks
- Adding mid-block crosswalks and new sidewalk connections at select locations
- Providing traffic calming measures
- Adding landscaping elements to better demarcate the existing right-of-way
- Updating curb ramps to comply with the Americans with Disabilities Act
- Updating signage, striping, and storm drains
- Relocating utilities



Project Schedule

Project development began in 2021, with construction expected to conclude in 2027.



*Dates are subject to change based on funding availability

Soldotna: Redoubt Avenue to Smith Way Rehabilitation



City of Soldotna Wins Alaska DOT&PF Community Transportation Program Support for Redoubt Avenue and Smith Way Rehabilitation.

History

The City of Soldotna secured support through the 2020-2023 Alaska Community Transportation Program (CTP), a collaboration between local communities, the State of Alaska and the Federal Highway Administration (FHWA).

The CTP is a competitive surface transportation program held every three years and administered by the Alaska Department of Transportation & Public Facilities (DOT&PF). It relies on public input, community nominations, and project sponsorship to identify and prioritize needed improvements. Selected projects are scored and awarded by a statewide board, then developed and managed by DOT&PF.

Why this Project?

Redoubt Avenue (east of N. Binkley Street) and Smith Way were originally built in 1980 and are now showing considerable deterioration with limited pedestrian infrastructure and non-ADA compliant crossings.

Improvements to and investment in these streets were recommended in Soldotna's:

- 2020-2024 5-year capital improvement Plan
- 2016 Soldotna Streets inventory and Management Plan
- Envision Soldotna 2030 (comprehensive) Plan

Currently

- Redoubt Avenue is owned and maintained by the City of Soldotna
- Smith Way is owned and maintained by the State of Alaska

At the end of the project, the City of Soldotna will take on ownership and maintenance for Smith Way.

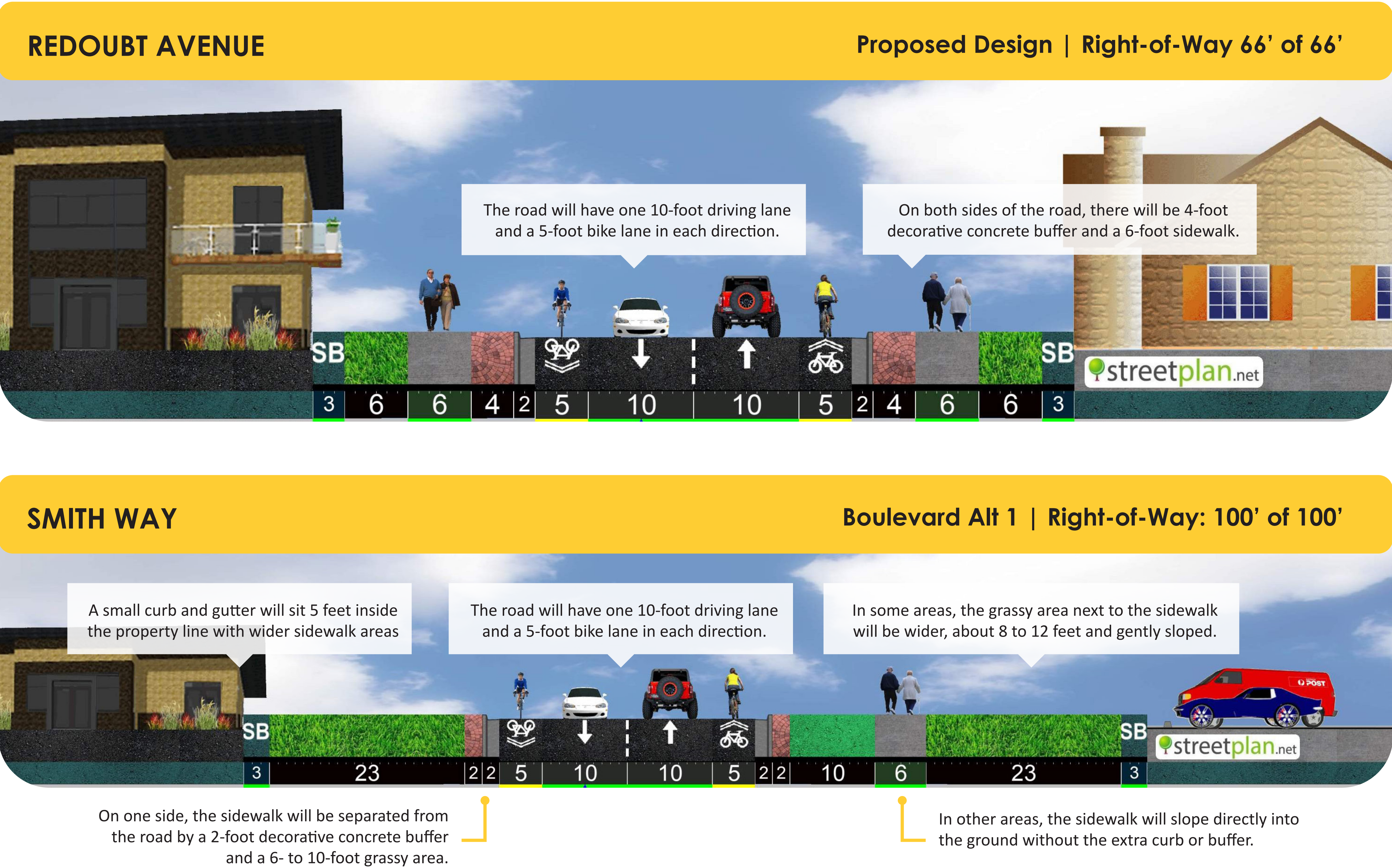
Draft Designs

This is how we propose to meet the purpose and need.



Learn about the project at redoubtsmithrehab.com.

Typical Sections



Working Within Existing Right-of-Way



The proposed project will not require additional permanent right-of-way (ROW) since all permanent public improvements will be constructed within the existing ROW.



Temporary Construction Easements (TCE) are **non-permanent, compensable** work areas needed to construct project improvements such as slope limits, curbs, and curb ramps.



Temporary Construction Permits (TCP) are **non-permanent, non-compensable** work areas needed to reconstruct existing driveways to match the new road surface.



The addition of landscaping elements will help define the existing ROW and discourage adjacent property owners from utilizing the space for personal use, as requested by the City of Soldotna.



If your home or business has encroached on existing ROW needed a representative from the project team will contact you directly.

More information
can be found here:

