

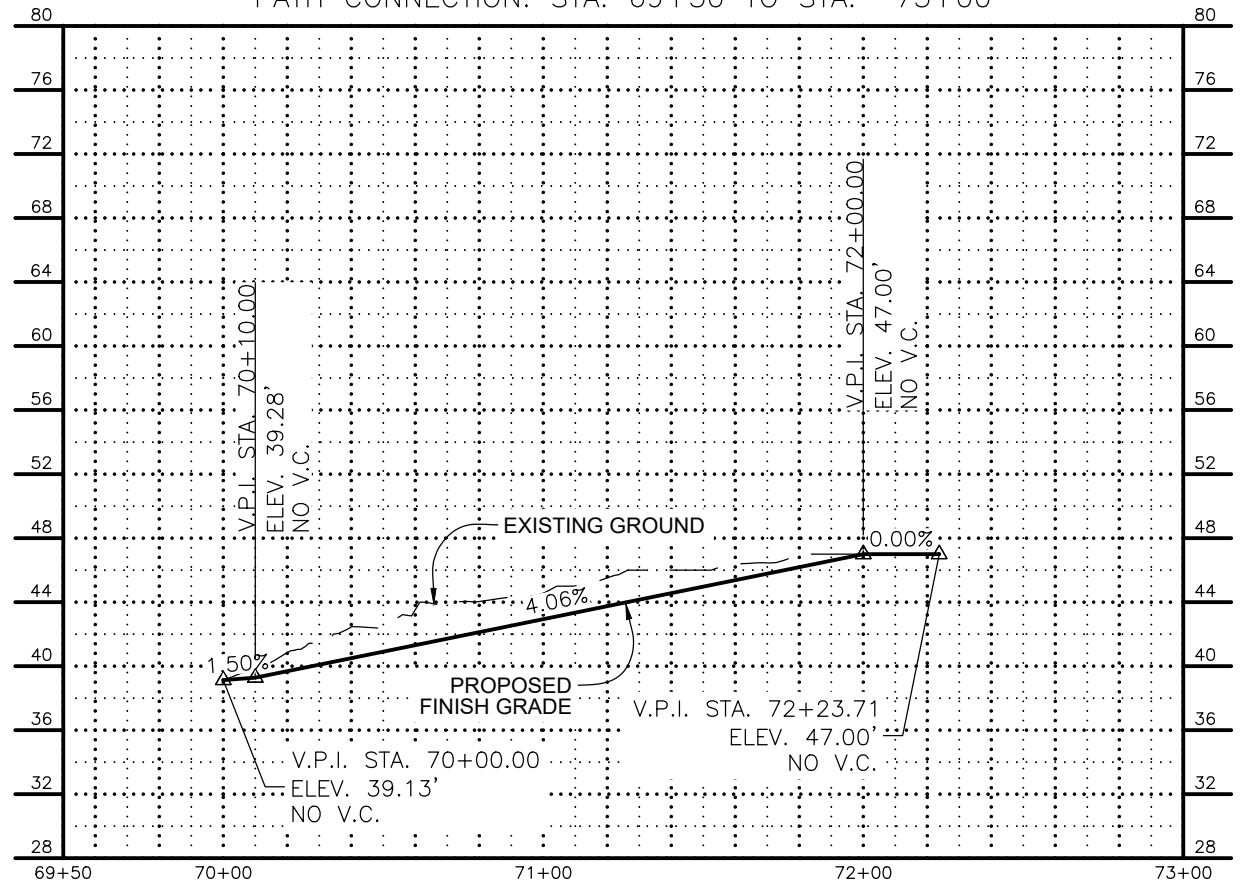
Appendix C: Conceptual Plan and Profile for Pedestrian Options at
the C Street Ramps

DRAWING LOCATION: Z:\PROJECTS\00582_0BR_RECON\DWGS\C\DESIGN\JAM\00554_PATH_CONNECTION-OPTIONS.DWG
 DATE: 12/20/2022 11:06 AM
 TIME: 11:06 AM
 SCALE:
 DESIGNED BY:
 CHECKED BY:
 DRAFTED BY:



SHEET NO.	TOTAL SHEETS
1	1
STATE	YEAR
ALASKA	2022
PROJECT DESIGNATION	
0001662/ CFHWY00586	
NO.	REVISION
DATE	
NO.	REVISION
DATE	
NO.	REVISION
DATE	

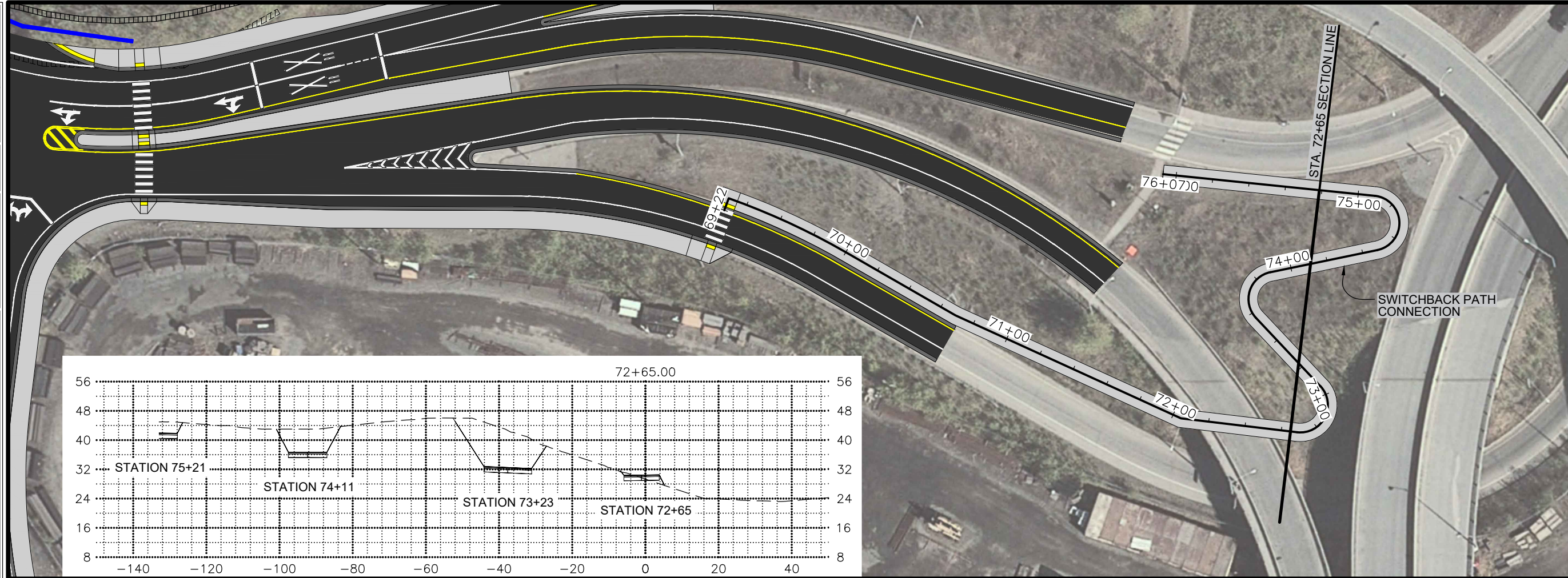
PATH CONNECTION: STA. 69+50 TO STA. 73+00



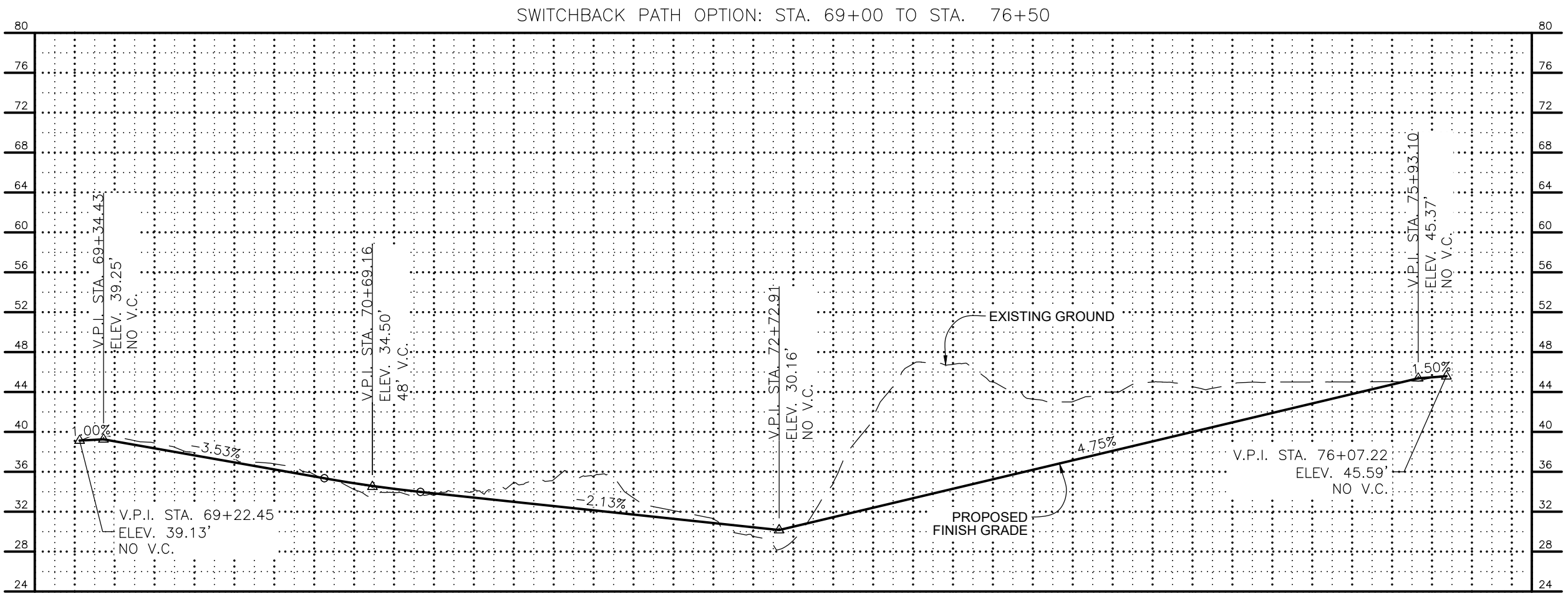
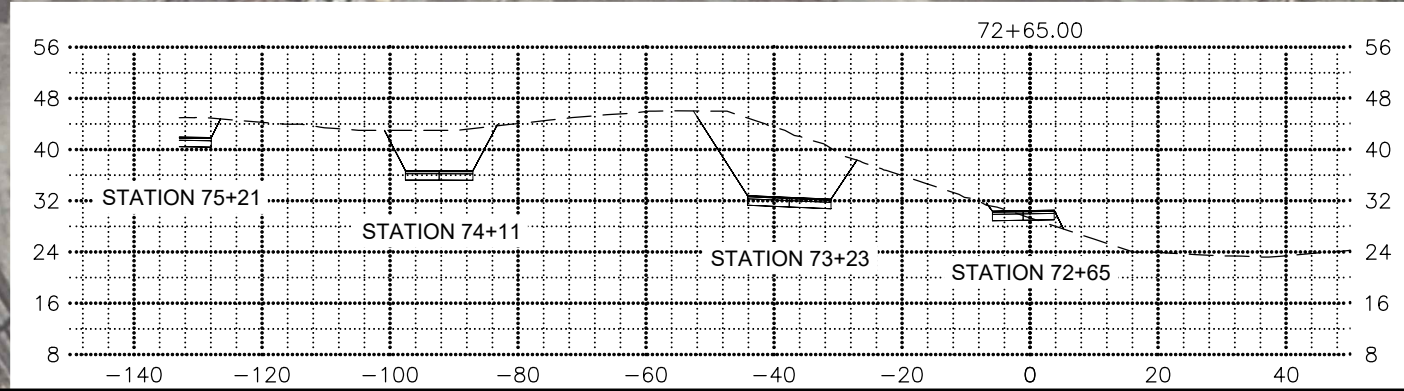
STATE OF ALASKA DOT&PF
 411 AVATION AVENUE
 ANCHORAGE, AK 99502
 (907) 269-0590

STATE OF ALASKA
 DEPARTMENT OF TRANSPORTATION
 AND PUBLIC FACILITIES
 OCEAN DOCK ROAD
 RECONNAISSANCE
 ENGINEERING STUDY
 SWITCHBACK PATH OPTION
 PLAN AND PROFILE

DESIGNED BY: [] CHECKED BY: [] DRAFTED BY: []
 SCALE: []
 DATE: 12/20/2022 TIME: 11:06 AM
 DRAWING LOCATION: Z:\PROJECTS\00582_OBR_RECON\DWGS\DESIGN\JAM\00554_PATH_CONNECTION-OPTIONS.DWG



SHEET NO.	TOTAL SHEETS
1	1
STATE	YEAR
ALASKA	2022
PROJECT DESIGNATION	
0001662/ CFHWY00586	
NO.	REVISION
DATE	
NO.	REVISION
DATE	



STATE OF ALASKA DOT&PF
 4111 AVATION AVENUE
 ANCHORAGE, AK 99502
 (907) 269-0590

STATE OF ALASKA
 DEPARTMENT OF TRANSPORTATION
 AND PUBLIC FACILITIES

OCEAN DOCK ROAD
 RECONNAISSANCE
 ENGINEERING STUDY

SWITCHBACK PATH OPTION
 PLAN AND PROFILE